

THE **FREE** WESSEX ARTS AND CULTURE GUIDE

EVOLVER

May and June 2018



HESTERCOMBE GALLERY

Contemporary art in reclaimed spaces

17.03.18 - 01.07.18

Cultivation: Points of Vantage

Anna Barriball
John Brown
Mary Griffiths
Mikhail Karikis

Mary McIntyre
Mariele Neudecker
John Newling
George Shaw



Supported using public funding by
**ARTS COUNCIL
ENGLAND**



**Arts Council
Collection**

hestercombe.com

Image: John Newling, *Value; Coin, Note and Eclipse*, Mixed Media, 2011 (Detail).
Arts Council Collection, Southbank Centre, London. © the artist.



Apply now for University Level courses in Fine Art, Graphic Communication and Photography.



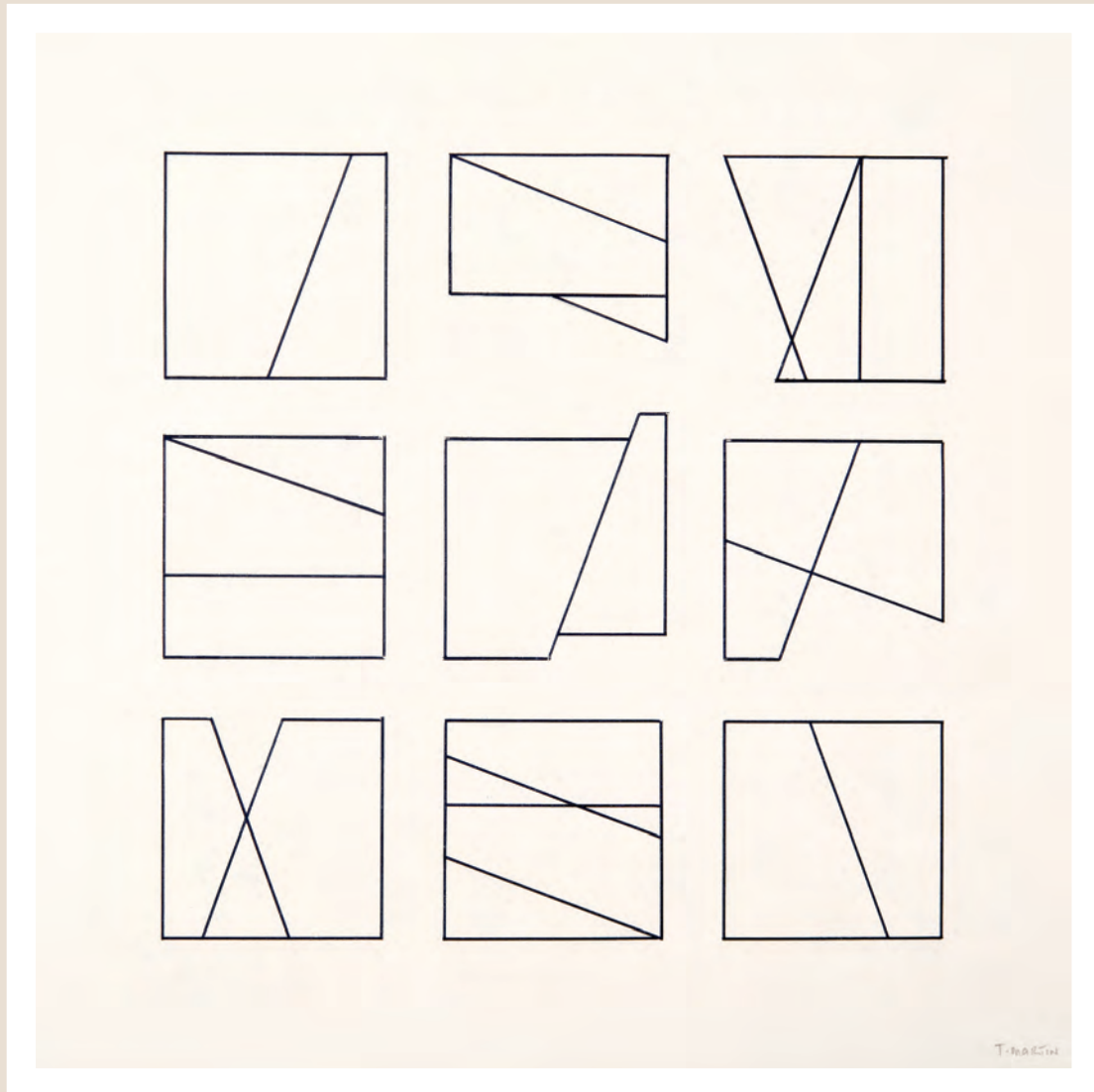
www.ExeterSchoolofArt.co.uk

For more information visit the Exeter School of Art
website or call Admissions on 01392 400500



EVOLVER 105

EXHIBIT A



TONY MARTIN: LINEAR DIVISIONS

Ink on Fabriano, 40 x 40 cm

ARTIST'S STATEMENT: "My recent drawings are an exploration of spaces developed through linear divisions and are made with ink and a ruling pen. The works often begin with certain self imposed rules which work in tandem with improvised decisions that offer new possibilities. The image develops as a record of an initial idea."

TONY MARTIN AND VINCENT STOKES: 'PLOTTED : PIECED'

8 - 13 May: 44AD Artspace, 4 Abbey Street, BATH, BA1 1AN. 11am - 5pm. 07753 378325 / www.44ad.net.

EVOLVER

THE WESSEX ARTS AND CULTURE GUIDE

Editor SIMON BARBER

Assisted by SUZY RUSHBROOK

Evolver Writers

FIONA ROBINSON www.fionarobinson.com

Graphic Design SIMON BARBER

Website OLIVER CONINGHAM at AZTEC MEDIA

Front Cover

GERRY DUDGEON 'MANGERTON CURVES'
(Dorset Art Weeks, Venue 298)

EVOLVER MEDIA

8 BUCKLAND ROAD, PEN MILL TRADING ESTATE,
YEovil, SOMERSET BA21 5EA



Email simon@evolver.org.uk

Telephone 01935 808441

Website www.evolver.org.uk

Twitter @SimonEvolver

Facebook www.facebook.com/EvolverMagazine

Published by EVOLVER MEDIA LIMITED

Pre-Press by FLAYDEMOUSE

01935 479453 / www.flaydemouse.com

Printed by STEPHENS & GEORGE

Distributed by ACOUSTIC

07456 009377 / everett190@btinternet.com

DEADLINE FOR EVOLVER 106

July and August 2018

THURSDAY 7 JUNE

VISUAL ARTS

May and June 2018



EILEEN COOPER 'TRAPEZE'

SAWDUST AND SEQUINS: THE ART OF THE CIRCUS

Sawdust and Sequins is a major exhibition of historic and contemporary art that marks the UK's distinct circus heritage and the contemporary circus scene alive in Bristol today. From historical depictions of familiar circus scenes to contemporary works exploring both the glamour and grit, this exhibition surveys the complex, compelling nature of circus.

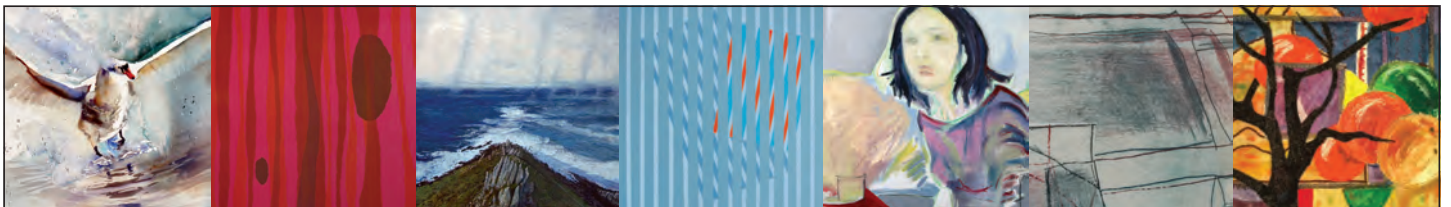
Featured artists include Peter Blake, Beth Carter, PJ Crook, Simon Quadrat, Abigail Lane, Sadie Tierney, Katharine Jones, Susie Hamilton, Laura Knight, Walter Sickert, David Bomberg, Duncan Grant, Robert Colquhoun and Thérèse Lessore.

An exhibition of Peter Lavery's circus photography will accompany the exhibition. His intimate, tell-all portraits document the unseen reality of life in the circus from the 1970s to the present day.

Until 3 June: Royal West of England Academy, Queen's Road, BRISTOL, BS8 1PX. Tuesday - Saturday 10am - 5.30pm, Sunday 11am - 5pm. £6.95 / £4.95. 01179 735129 / www.rwa.org.uk.



ROS CUTHBERT 'THREE CLOWNS'



Showcasing contemporary craft and art alongside an inspiring exhibition programme of work by local and national artists



Market Place, Somerton, Somerset TA11 7LX • 01458 273008 • www.acearts.co.uk

VISUAL ARTS

CONTEMPORARY QUILTERS WEST: 'UNFOLDING STORIES 3'

Until 3 May

Harbour House Centre for Arts & Yoga,
The Promenade, KINGSBRIDGE,
Devon, TQ7 1JD. 10am - 5pm.

www.contemporaryquilterswest.org.

"Textiles used in unusual and innovative
ways make for a provocative show."

PHIL DAVIES: 'WHERE TO FROM HERE?'

Until 5 May

Brewhouse Theatre and Arts Centre,
Coal Orchard, TAUNTON, TA1 1JL.
Monday - Friday 10am - 4pm, Saturday
12noon - 4pm. 01823 283244 /
www.phildaviesart.com.



ANNA GILLESPIE: 'NEW WORKS'

Until 5 May

Beaux Arts, 12 - 13 York Street, BATH,
BA1 1NG. Monday - Saturday 10am -
5pm. 01225 464850 /

www.beauxartsbath.co.uk. "In this
exhibition Anna Gillespie launches new
works in plaster. Anna is exploring a
more alienated and urban human
experience than in her previous work,
the Gathering Project, which used
found tree materials. The new
figurative work deals with themes
which include loss, the feminine and
the masculine, and the process of
depicting human reality through the
sculptural form."

GROUP 7: 'COLOUR VALUES'

Until 5 May

Lighthouse, Poole's Centre for the Arts,
21 Kingland Road, POOLE, BH5 1UG.
Tuesday - Saturday 10am - 9pm. 01202
280000 / www.group7.org.uk.

"Contemporary work celebrating
colour in painting and printmaking.
Works by Brian Bishop, Martyn
Brewster, Bonnie Brown, Fran Donovan,
Michelle Griffiths, Ursula Leach, and
Peter Symons."



'CRANES AND LAPWINGS' (Linocut)

JACKIE CURTIS: INK WAYS

"Innovative printmaker Jackie Curtis travels Somerset's pathways and
waterways exploring the ever changing seasonal landscape, watching
birds weave through the skies and fields."

29 May - 29 June: Bridgwater Arts Centre, 11 - 13 Castle Street,
BRIDGWATER, TA6 3DD. Tuesday - Friday 10am - 3pm.

www.bridgwaterartscentre.co.uk / www.jcurtisart.com.

KATE EVANS: 'REMOTE'

Until 6 May

Kobi & Teal Gallery, 57 Catherine
Street, FROME, BA11 1DA. 10am -
4.30pm. www.kobiandteal.co.uk.

"Mark-making and experimentation
with colour are important elements
within Kate's practice."

UNIVERSITY CENTRE SOMERSET

Until 6 May

The Old Brick Workshop, Higher Poole,
WELLINGTON, TA21 9HW. 10am -
4pm. 07989 465427 /

www.theoldbrickworkshop.com. "Final
year work by students of University
Centre Somerset."

'BRAVE ART'

Until 7 May

The Gallery Upstairs, Upton Country
Park, POOLE, BH17 7BJ. 10am -
4.30pm. 07906 759620 /

www.edbas.co.uk. "Over 200 new art
works by East Dorset Brave Art
Society."

'BRAVE ART 11'

Until 7 May

Gallery Upstairs, Upton Country Park,
POOLE, BH17 7BJ. 10am - 4.30pm.
07906 759620. "200 new art works by
current and past members of the East
Dorset Brave Art Society (EDBAS) and
associates."

'NATURALLY CURIOUS'

Until 7 May

Dorset County Museum, High West
Street, DORCHESTER, DT1 1XA.

Monday - Saturday 10am - 4pm
(March), Monday - Saturday 10am -
5pm (April). 01305 756827 /

www.dorsetcountymuseum.org.

"Amanda Wallwork, Darrell Wakelam,
Lorna Rees, Mark Witton. Four unique
ways of interpreting pre-human
environments. From modern
recreations of prehistoric animals to
abstract representations of the rocks
beneath the landscape."

'THE LAND WE LIVE IN - THE LAND WE LEFT BEHIND'

Until 7 May

Hauser & Wirth Somerset, Durslade
Farm, Dropping Lane, BRUTON, BA10
ONL. Tuesday - Sunday 10am - 5pm.

www.hauserwirthsomerset.com. "This
ambitious survey exhibition explores
the contradictory nature of society's
relationship to the rural. The
presentation features work by artists
working from the 1500s to the present
day, including Paul McCarthy, Beatrix
Potter, Carsten Höller, Laure Prouvost,
William Holman Hunt, Samuel Palmer,
Frank Lloyd Wright, and Mark
Wallinger."



JANETTE KERR: 'NORTH'

Until 7 May

Sladers Yard, West Bay, BRIDPORT, DT6
4EL. Monday - Saturday 10am - 4pm,
Sundays and Bank Holidays 12noon -
4pm. www.sladersyard.co.uk.

"Janette
Kerr is the ultimate sea painter. Her
work begins outside with the salt in her
paint and the sea heaving and crashing
around her, the wilder the better."

Above: 'Gipsvika'

EVOLVER PRIZE 2018

FIRST PRIZE: EVOLVER 106 FRONT COVER + £1,000

EXTENDED DEADLINE: 31 MAY

See page 27 and www.evolver.org.uk/evolverprize

in the OPEN

New Work from New Zealand, Peru, Scotland and England by
MOISH SOKAL



Towards Mt Cook from Lake Pukaki

Watercolour (detail) 17" x 30"

The Malthouse Gallery

East Lambrook Manor Gardens, Somerset TA13 5HH
5th June - 22nd July • 10am - 5pm • Tuesday to Sunday
Mob 07812 837825 • www.moishsokal.co.uk

VISUAL ARTS



TIM LEWIS 'MULE MAKE MULE'

A CURIOUS TURN: MOVING MECHANICAL SCULPTURE

"This Crafts Council touring exhibition features pieces of extraordinary moving mechanical sculpture by leading makers of the last 40 years."

Until 19 May: Thelma Hulbert Gallery, Elmfield House, Dowell Street, HONITON, EX14 1LX. Tuesday - Saturday 10am - 5pm. 01404 45006 / www.thelmahulbert.com.

LIN WALKER: 'WHAT IF'

Until 8 May

The Gallery, Shaftesbury Art Centre, 11 Bell Street, SHAFTESBURY, SP7 0PX. Monday - Saturday 10am - 4pm. 01747 855243. "This current set of work is the result of a continuing preoccupation with the residue of human existence."

'MARKING TIME: TRACES OF ANOTHER JURASSIC COAST'

Until 9 May

Courtyard Gallery, Town Mill, Mill Lane, LYME REGIS, DT7 3PU. 10.30am - 4.30pm. www.townmillarts.co.uk. "West Somerset artists respond to their own beautiful and geologically fascinating coast."

'LIFE IN PAINT'

Until 12 May

McNeill Gallery of Contemporary Art, 2 Market Place, PEWSEY, SN9 5AA. Tuesday - Friday 11am - 5pm, Saturday 11am - 2.30pm. 07702 472326 / 01672 564802 / www.mcneillgallery.com. "Figurative paintings and sculpture depicting life all around us."

BATH SOCIETY OF ARTISTS ANNUAL OPEN EXHIBITION

Until 12 May

Victoria Art Gallery, Bridge Street, BATH, BA2 4AT. £4.50. 01225 477233 / www.victoriagal.org.uk. "This highly popular exhibition showcases the best of the region's artistic talent and is a must for art lovers and collectors alike."

TIM HARRISON: 'AS IT WAS IS NOW'

Until 13 May

Messums Wiltshire, Place Farm, Court Street, TISBURY, Salisbury, SP3 6LW. Wednesday - Saturday 10am - 5pm, Sunday 10am - 4pm. 01747 445042 / www.messumswiltshire.com. "Working in a variety of stones, Tim's sculptures

represent a geological time and place, some of the stone pieces visibly contain fossils millions of years old."

JOANNA STILL: 'HINTERLAND'

Until 13 May

Messums Wiltshire, Place Farm, Court Street, TISBURY, Salisbury, SP3 6LW. Wednesday - Saturday 10am - 5pm, Sunday 10am - 4pm. 01747 445042 / www.messumswiltshire.com. "Joanna's ceramics with their spare, classical simplicity, reflect the nature of the material and the transforming process of firing. Made on a potter's wheel, each piece is then worked on by hand."

JOAN DUNNE AND SUSAN UNDERWOOD

Until 15 May

LT Gallery, 1 Orchard Street, WESTON-SUPER-MARE, BS23 1RG. Tuesday, Friday and Saturday 10am - 4pm, Thursday 12noon - 7pm. 07730 431726 / www.ltgallery.com. "Paintings by two artists who both work intuitively."

MATT MILLER AND CORRINE CHADBURN

Until 18 May

Abbey Muse Art Gallery, 56 - 58 High Street, GLASTONBURY, BA6 9DY. Monday - Saturday 11am - 4pm. 07919 427048.

'CICATRIX'

Until 19 May

Long Gallery, Black Swan Arts, 2 Bridge Street, FROME, BA11 1BB. Monday - Saturday 10am - 4pm. 01373 473980 / www.blackswan.org.uk. "Cicatrix incorporates digital, sound, installation, drawing and film. The audience is offered further insight into the WW1 legacy surrounding Salisbury Plain through the artists' interpretations of this scarred and ancient landscape and its connections across the globe."

the Bath ART fair why not be original?

ORIGINAL ART direct from ORIGINAL ARTISTS
Farleigh Road Farm Shop, Farleigh Road
Norton St Philip, Bath BA2 7NG
(Off A36 between Bath and Frome)

www.bathartfair.co.uk



Sat 12th May
(10am to 6pm)

Sun 13th May
(10am to 5pm)



£5 ON THE DOOR - HALF PRICE ENTRY WITH THIS ADVERT

FREE parking / pop up cafe / childrens quiz

VISUAL ARTS

DEBORAH WESTMANCOAT: 'WEATHER REPORT'

Until 19 May

Ace Arts, Market Place, SOMERTON, TA11 7NB. Tuesday - Saturday 10am - 5pm. www.acearts.co.uk. "Paintings attempting to understand landscape and our place within it. Site and weather specific waters are collected and combined with pigment to record the energy, poetry and mystery of bodies of water held within the land."

'TRANSFORMATION: EARTH MATTERS'

Until 19 May

Bristol Guild Gallery, 68 Park Street, BRISTOL, BS1 5SJ. 10am - 5pm. 01179 858439. "An exhibition by XIII Makers featuring painting, photography, textile art, mixed media, jewellery, and print."



SIMON WILLIAMS: 'ULTRA SPACE'

Until 19 May

That Art Gallery, 17 Christmas Steps, Bristol, BS1 5BS. Tuesday - Saturday 11am - 6pm. 0117 329 2522 / www.thatartgallery.com. "Simon Williams' paintings feed upon the plethora of visual material accessible in the digital age. He draws inspiration from many sources most notably childhood comic books, propaganda posters, graffiti works and advertising."

LAWRENCE NASH: 'QUIET'

Until 19 May

Ilminster Arts Centre, The Meeting House, East Street, ILMINSTER, TA19 0AN. Monday - Friday 9.30am - 4.30pm, Saturday 9.30am - 2.30pm. www.themeetinghouse.org.uk. Drawings and paintings.

ANNE SHUTTLEWOOD: 'ANIMALS IN MY ART'

Until 27 May

Waterstones, 7 - 9 High Street, SALISBURY, SP1 2NJ. Monday - Saturday 9am - 6pm, Sunday 10.30am - 4.30pm. www.storiesincolour.com.



MAPPING THE SOUTH DORSET RIDGEWAY

In spring 2016 the Dorset Area of Outstanding Natural Beauty (AONB) and The Arts Development Company ran a competition inviting new work that would inspire people visiting the South Dorset Ridgeway.

This spring, six hand drawn maps, a field guide to the landscape and a large sculpture will enhance any visit to the South Dorset Ridgeway - what experts have described as "one of the richest and most important cultural landscapes in England."

The series of maps and guide are produced by AMANDA WALLWORK, one winner of the competition. Amanda has a long-standing interest in exploring geology and archaeology through her work. As Amanda says, "This project has enabled me to incorporate a long-term interest in maps, walking, routes, trackways, archaeology and geology, bringing together ideas of the physical experience of landscape and the presence of the past with notions of rocks as vast data stores recording everything." Each map shows at least one suggested walking or cycling route, carefully chosen by the AONB Team to provide highlights of this remarkable landscape.

Alongside the map commission is a sculptural commission for Black Down, discretely placed, but near to the Hardy Monument. This work, by the other competition winner, architect and sculptor AMANDA MOORE, comprises a series of stone columns, built from local Forest Marble by Dorset craftsman Tom Trouton. As well as referencing the geology and

traditional building techniques of the area, the stone columns are aligned to lunar and solar events, referencing the many important Ridgeway pre-historical monuments. The stone columns are situated adjacent to a new car park for Black Down, visible as visitors walk from the car park out on to the open heathland at this highest point on the Ridgeway.

Underlying both commissions is the AONB Team's drive to convey how deeply and intimately entwined are people and landscape. As James Sharpe, the Dorset AONB's Landscape Partnership Manager says, "The South Dorset Ridgeway is a very special landscape as what is fascinating about it is more than surface deep. With support from the Heritage Lottery Fund and the Arts Council we have been able to commission these artworks to fire the imagination and help visitors fully appreciate this place."

Amanda Wallwork will be showing the original artwork for the maps at her West Bay studio between 7th and 9th June. On Thursday 7th June Amanda Wallwork and James Sharpe (Dorset AONB) will host an informal talk about the project.

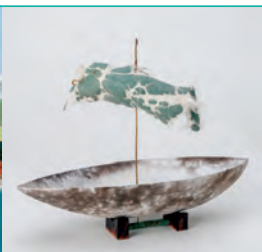
AMANDA WALLWORK: 'MAPPING THE SOUTH DORSET RIDGEWAY'

EXHIBITION: 7 - 9 June / ARTIST TALK: 7 June

Top Floor Studio, The Old Timberyard, West Bay Road, WEST BAY, DT6 4EL. Exhibition: 11am - 5pm.

Talk: 6.30pm, free, booking essential.

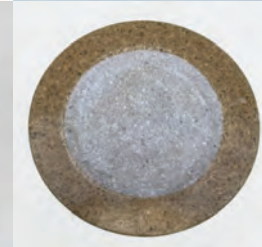
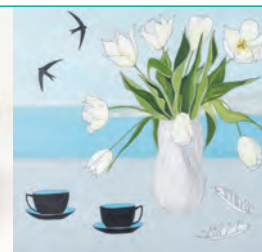
james.sharpe@dorsetcc.gov.uk / www.southdorsetridgeway.org.uk



Boilerhouse GALLERY

CONTEMPORARY ART AND CRAFT GALLERY

Next to Corfe Castle station
Monday to Saturday 10am - 5pm
Sandy Hill Lane, Corfe Castle,
Dorset BH20 5JF
01929 481073
www.boilerhousegallery.co.uk
@boilerhousegallery
Dorset Art Weeks - open Sundays too
- Venue 154



VISUAL ARTS



LOUISE WAUGH: 'A VIEW OF MY OWN'

Until 29 May

John Leach Gallery, Muchelney Pottery, Muchelney, near Langport, TA10 0DW. Monday - Saturday 9am - 1pm, 2 - 5pm. www.johnleachpottery.co.uk. "A brand new body of work, much of which explores the landscapes observed on her recent travels."

GEORGINA TOWLER: 'FRAGMENTAL'

Until 1 June

Hubnub Gallery, Hubnub Centre, Whittox Lane, FROME, BA11 3BY. 9am - 5pm. www.hubnubcentre.com. "Sitting between the mind and the real, Georgina's work explores the relationship between land and space. Contrasting multiple pictorial elements she captures the complex visual experience encountered in the landscape."

DORSET VISUAL ARTS: 'WET PAINT'

Until 2 June

Allsop Gallery, Bridport Arts Centre, South Street, BRIDPORT, DT6 3NR. Tuesday - Saturday 10am - 4pm. 01308 424204 / www.bridport-arts.com. "Dorset Visual Arts presents sketchbooks and unframed, developmental works arising from their interrogation of personal subjects broadly summarised as landscape, biography and the abstract."

'4U2 TOUCH II'

Until 2 June

Red House Museum, Quay Road. CHRISTCHURCH, BH23 1BU. Tuesday - Friday 10am - 5pm, Saturday 10am - 4pm. www.cadarts.co.uk. Paintings, textiles, wood, sculpture.

'EXHIBITION #65'

Until 3 June

65 Nailsea High Street, NAILSEA, BS48 1AW. Wednesday - Sunday 9.30am - 4.30pm. www.northsomersetarts.org. "North Somerset Arts members showcase painting, sculpture, jewellery, and much more for spring."



NANCY FARMER 'REFLECTIONS'

BATH ART FAIR

"The second Bath Art Fair will bring together some of the most innovative professional artists from around the country in one relaxed setting in the grounds of the popular Farleigh Road Farm Shop off the A36 between Bath and Frome. Many of the artists have been professional artists for years and concentrate on selling their work at art fairs, preferring the direct contact with their customers. From the customer's point of view there's nothing nicer than making an emotional connection with a piece and then chatting to the artist who created it. Browse original paintings and hand-made prints, stunning hand-crafted jewellery, hand-made glass and artisan ceramics. Find the perfect piece for your new house extension, that awkward spot in your living room, or brighten up your garden with a sculptural piece."

12 and 13 May: Farleigh Road Farm Shop, Farleigh Road, NORTON ST PHILIP, near Bath, BA2 7NG. Saturday 10am - 6pm, Sunday 10am - 5pm. www.bathartfair.co.uk.

PETER LAVERY: '50 YEARS OF CIRCUS PORTRAITS'

Until 3 June

Royal West of England Academy, Queen's Road, Clifton, BRISTOL, BS8 1PX. Tuesday - Saturday 10am - 5.30pm, Sunday 11am - 5pm. £6.95 / £4.95. www.rwa.org.uk. "Lavery's monochrome prints, taken between 1970 and 1996, are exhibited alongside colour photography from his latest series of circus works."

TOWN HALL OPEN

Until 8 June

Trowbridge Town Hall, Market Street, TROWBRIDGE, BA14 8EQ. Monday - Friday 10am - 4pm, Saturday 10am - 2pm. 01225 774306 / www.townhallarts.co.uk.

'COLLECTED SHADOWS'

Until 16 June

Andrew Brownsword Galleries, The Edge, University of Bath, Claverton Down, BATH, BA2 7AY. Monday - Friday 9am - 3pm, Saturday 10am - 3pm. 01225 386777 / www.edgearts.org. "Collected Shadows spans the history of the photographic medium from the mid-1850s to present day, displaying a vast array of images which juxtapose time periods, geographies and photographic techniques."

PAUL DEACON: 'MODEST OBJECTS'

Until 21 June

Trowbridge Town Hall, Market Street, TROWBRIDGE, BA14 8EQ. Monday - Friday 10am - 4pm, Saturday 10am - 2pm. 01225 774306. "Paul's vibrant paintings juxtapose images drawn from everyday experiences. This exhibition brings together a body of work in which the status of ordinary objects is raised, and their meanings redefined."

'REFLECTIONS ON NATURE'

Until 24 June

Glastonbury Abbey, Magdalene Street, GLASTONBURY, BA6 9EL. 9am - 6pm. £6.90 / £6 / £4.30. 01458 832267. "Art inspired by the grounds of Glastonbury Abbey."

'RUSSELL-COTES CERAMICS: CONNOISEUR OR CONNED?'

Until 26 August

Russell-Cotes Art Gallery and Museum, East Cliff Promenade, BOURNEMOUTH, BH1 3AA. Tuesday - Sunday 10am - 5pm. 01202 451820. "Merton Russell-Cotes collected a vast range of exquisite ceramics, from the fantastic to the fake. Can you tell which is which in this fun exhibition?"

THE CREATIVE GALLERY

Showcasing ceramics, paintings, photography, jewellery and glass by local artists

"Into the Woods"
Katy Tunstall
1st-31st May

"Sea and Sky"
Colin Jones
1st-30th June

St John's Hill, Wareham, Dorset BH20 4NB t 01929 551700 e fiona@creativegallerywareham.co.uk
Open Monday-Saturday 10am-5pm and Sundays from 27th May. Purbeck Art Weeks 26th May-10th June

VISUAL ARTS



'MAN AND WOMAN'

KEN KIFF

"Colour and colour relationships interact in Ken Kiff's painting, with a range of images evoking the blissfully radiant and lyrical to the comic and disturbingly grotesque."

Until 25 May: The Young Gallery, The Market Place, SALISBURY, SP1 1BL. 10am - 4pm. 07802 822469 / www.younggalleriesalisbury.co.uk.

NICKY KNOWLES: 'THE WALLED GARDEN'

Until 31 August

The Hubnub Gallery, Hubnub Centre, Whittox Lane, FROME, BA11 3BY. 9am - 5pm. 07712 523734 / www.hubnubcentre.com.

"Large scale abstract collages. Nicky's new body of work will be inspired by gardens and her constant love of mid century art."

'COMMON DIFFERENT'

1 - 12 May

The Island Bristol Gallery, Nelson Street, Bristol, BS1 2LE. 10am - 6pm. www.creativeinnovationcentre.co.uk.

"Seven South West based artists bring together their different practices and invite their audience to enjoy what they have in common and what is different."

KATY TUNSTALL: 'INTO THE WOODS'

1 - 31 May

Creative Gallery, St John's Hill, WAREHAM, BH20 4NB. Monday - Saturday 10am - 5pm. 01929 551700 / www.creativegallerywareham.co.uk.

"Stoneware and porcelain vessels, screen printed with images from her local Dorset woodland."



'LIGHT AND WEIGHT'

1 May - 9 June

Artwave West, MORCOMBELAKE, DT6 6DY. Tuesday - Saturday 10am - 5pm. 01297 489746 / www.artwavewest.com.

"A weighty show featuring Sophie Capron, Suchi Chidambaram, Heather Duncan and Edward Kelly consisting of paintings full of strength and colour made with animated brushmarks and expressive drawn elements."

Above: Heather Duncan 'Wind Turbine'



Discover the secrets of the ancient South Dorset Ridgeway landscape with a new Field Guide and set of walking maps, produced by artist Amanda Wallwork

Available from April FREE at local outlets, these beautiful publications will help you discover what makes this enigmatic landscape so special www.southdorsetridgeway.org.uk / www.amandawallwork.com

Amanda Wallwork: Mapping the South Dorset Ridgeway

EXHIBITION: 7 - 9 June, 11am - 5pm. Original artwork for maps and other work inspired by the South Dorset Ridgeway.

ARTIST TALK: Thursday 7 June, 6.30pm. Free, booking essential, details: james.sharpe@dorsetcc.gov.uk / www.southdorsetridgeway.org.uk / www.amandawallwork.com

Top Floor Studio, The Old Timberyard, West Bay, DT6 4EL



A CURIOUS TURN

moving, mechanical sculpture

A Crafts Council Touring Exhibition

10 March - 19 May 2018

In association with Cabaret Mechanical Theatre, exhibition consultant

Thelma Hulbert Gallery, Elmfield House, Dowell Street, Honiton, Devon, EX14 1LX / 01404 45006 / www.thelmahulbert.com / Tuesday - Saturday 10am - 5pm / Free admission, donations welcome

Image: Five Artists Reflect on Their Waning Powers, Paul Spooner, 1983, Crafts Council Collection W49 Photo REG Design

Watercolour Club Exhibition

Bowridge Gallery 24th June - 8th July 2018 11.00 - 6.00

www.thebowridgegallery.co.uk Watercolour Club: www.laura-jolliffe.co.uk

Tincleton Gallery

contemporary fine art in Dorset

Mixed Summer Show

gallery artists

Fri 18th May - Sun 1st July



"Green apples & plums", oil on board by Jenny Sutton

The Old School House, Tincleton, near Dorchester, DT2 8QR
Friday / Saturday / Sunday / Monday • 10am – 5pm
01305 848 909 • www.tinctongallery.com



CELEBRATING THE ARTS

Saturday 23 June
Demonstrations • workshops • café • mini tea dance • activities • art exhibits
11.00am – 4.00pm
Digby Hall, Sherborne, DT9 3AA
www.sherborneartslink.org.uk
Sherborne Arts Link Limited. Charity no. 1007680 Company no. 2471382



Silk weaving by Debby Kirby
Printmaking by Robin Mackenzie

Jewellery by Caroline Parrott
Embroidery by Jen Goodwin

walfordmill
crafts
A CONTEMPORARY CRAFT VENUE
IN WIMBORNE SHOWCASING
LOCAL AND NATIONAL MAKERS

Stone Lane, Wimborne, BH21 1NL
01202 841400
www.walfordmillcrafts.co.uk
Tuesday - Saturday 10am - 5pm
Sundays and Bank Holidays 11am - 4pm

VISUAL ARTS



'AUTUMN, DIANA AND ACTAEON' (Oil, 100 x 150 cm, 2015)

KATE WESTBROOK

"Devon-based painter Kate Westbrook explores the classic myth of Diana and Actaeon in an engaging series of paintings that place the tragedy in the landscape of Dartmoor."

5 - 22 May: The Malthouse Gallery, The Town Mill, Mill Lane, LYME REGIS, DT7 3PU. 10.30am - 4.30pm. www.townmillarts.co.uk.

'COVERS'

2 - 13 May

Royal West of England Academy, Queen's Road, Clifton, BRISTOL, BS8 1PX. Tuesday - Saturday 10am - 5.30pm, Sunday 11am - 5pm. 0117 973 5129. "Photographer Alex Bartsch has documented and re-photographed more than 50 reggae sleeves in their original locations, holding them up at arm's-length to blend in with their surroundings. A fascinating insight into the history of UK reggae music."

'SECRET POSTCARDS'

3 - 20 May

Royal West of England Academy, Queen's Road, Clifton, BRISTOL, BS8 1PX. Tuesday - Saturday 10am - 5.30pm, Sunday 11am - 5pm. 0117 973 5129. "A chance to purchase unique works of art by leading figures from the art and cultural world."

'OUTDOOR SCULPTURE SHOW'

4 - 13 May

Tasburgh House Hotel, Warminster Road, BATH, BA2 6SH. 10am - 5pm. 01225 461230 / www.axlearts.com.

"Exhibition of large scale sculpture and ceramics suitable for outdoor siting in gardens and on patios."

'ANOTHER SPRING'

4 May - 17 June

Exeter Phoenix, Bradninch Place, Gandy Street, Exeter, EX4 3LS. Monday - Saturday 10am - 5.30pm, Sundays 12noon - 5.30pm. www.exeterphoenix.org.uk.

SIMON GRIFFITHS: 'ADVENTURES IN REALITY?'

5 - 26 May

Round Tower, Black Swan Arts, 2 Bridge Street, FROME, BA11 1BB. Monday- Saturday 10am - 4pm. 01373 473980. "Simon Griffiths explores the Yin and Yang of life, love, loss, death and inner demons, bringing to life the emotions generated in a riot of colourful expressive works."

'LANDSCAPE - LIGHT & COLOUR'

5 - 28 May

Malthouse Gallery, East Lambrook Manor Gardens, Silver Street, EAST LAMBROOK, TA13 5HH. 10am - 5pm (Closed Mondays). 07966 300293 / www.katecochrane.me / www.jpfineart.com. Paintings.

CHRIS DUNN: 'PAISLEY RABBIT AND THE TREEHOUSE CONTEST'

5 May - 9 June

Pound Arts Centre, Pound Pill, CORSHAM, SN13 9HX. Monday - Saturday 9.30am - 6pm. 01249 701628. "Beautifully rendered watercolours."

ILMINSTER
arts centre
AT THE MEETING HOUSE

DISCOVER SOUTH
SOMERSET'S MOST VIBRANT
ARTS VENUE!

2018 ILMINSTER ANNUAL OPEN
Monday 2 - Friday 27 July • Sponsored by Branston
A CALL FOR ENTRIES
Entry details at www.themeetinghouse.org.uk

VISUAL ARTS

'APPETO: PUBLIC ART & PRIVATE WORLDS'

5 May - 1 September

The Shippon Gallery, Hook Farm, CHARDSTOCK, Axminster, EX13 7DD. Friday 2 - 5pm. 01460 220021.

"Paintings, sculpture, prints and drawings by Dave King and George Sherlock."

TONY MARTIN AND VINCENT STOKES: 'PLOTTED : PIECED'

8 - 13 May

44AD Artspace, 4 Abbey Street, BATH, BA1 1AN. 11am - 5pm.

www.tonymartinart.com. See page 3.

'CHILDHOOD'

8 May - 18 November

Royal Albert Memorial Museum, Queen Street, EXETER, EX4 3RX. Tuesday - Saturday 10am - 5pm. 01392 265858 / www.rammuseum.org.uk.

VAL MORSMAN

9 - 15 May

The Gallery, Shaftesbury Art Centre, 11 Bell Street, SHAFTESBURY, SP7 0PX. Monday - Saturday 10am - 4pm.

01747 855243. "Mixed media, collage, watercolour, acrylics and inks."

'MADE IN SOMERSET'

10 May

The White Hart + Ace Arts, Market Place, SOMERTON, TA11 7NB. 10am - 3pm. 01458 273008. "Work by 30 designer-makers and artisan-producers. Fundraising event for local charity Etatu, which aims to improve the lives of children in Kenya through the power of education."

THE CRAFT UNIT

10 - 14 May

The Bishop's Barn, Silver Street, WELLS, BA5 1US. Thursday - Saturday 10am - 6pm, Sunday and Monday 10am - 4pm. www.thecraftunit.co.uk. "A unique range of craft and decorative arts."

'FALLING FROM GRACE'

11 - 13 May

The Grange, The Walled Orchard, STREET, BA16 0BQ. 11am - 5pm. 07971 225874 / www.melaniethompson.me.uk. "Weekend of events that includes outdoor films and an indoor installation responding to a year's residency in a wall."

NIGEL SHARMAN

11 - 16 May

The Courtyard Gallery, The Town Mill, Mill Lane, LYME REGIS, DT7 3PU. 10.30am - 4.30pm. www.townmillarts.co.uk.



FIRST YEAR FOUNDATION DEGREE PHOTOGRAPHY STUDENTS
Produced as part of the 'Seduced by Art' studio workshop

EXETER SCHOOL OF ART: SUMMER SHOWS

Exeter is the place to visit this May to July if you want to see a broad range of creative work by students in the City. Exeter College and Exeter School of Art launch their Summer Show season on 21st May showing work from across the Faculty of Art and Design, starting with the University Level students, specialising in Fine Art, Graphic Communication and Photography.

The Summer Shows continue into June with work by the Foundation Studies students who exhibit work from a broad range of subjects including Fine Art, Illustration, Graphic Design, Fashion, Applied Art and Lens Media.

The final show is a platform for the A Level, Extended Diploma and Access to Higher Education students, who will be displaying work across a similarly wide range of creative subjects.

The Summer Shows, always a special event and an exciting showcase of creativity, are open at Exeter College's Centre for the Creative Industries building and Victoria Yard in Queen Street, Exeter.

Everyone is welcome to visit these exciting and vibrant celebrations of student talent, creativity and expression.

21 - 26 May: Foundation Degree (Fine Art, Graphic Communication, Photography)

Exeter School of Art, Centre for Creative Industries, Queen Street, EXETER, EX4 3SR. Monday - Saturday 9am - 5pm. 01392 400301 / www.exeterschoolofart.co.uk.

13 - 20 June: Diploma in Foundation Studies

Exeter School of Art, Centre for Creative Industries, Queen Street, EXETER, EX4 3SR. Monday - Friday 10am - 5pm. 01392 400301 / www.exeterschoolofart.co.uk.

27 June - 4 July: A Level / Extended Diploma / Access

Exeter College, Centre for Creative Industries, Queen Street, EXETER, EX4 3SR. Monday - Friday 10am - 5pm. 01392 400301 / www.exe-coll.ac.uk.

'PICTURE SOMERSET'

12 May - 9 June

For Every Cloud, Bow Street, LANGPORT, TA10 9PR. 10am - 4pm. www.forevercloud.co.uk. "An exhibition celebrating photos that capture the heart of Somerset - the breathtaking beauty and personality."

'TELLING WILTSHIRE'S STORY'

12 May - 24 June

Wiltshire Museum, 41 Long Street, DEVIZES, SN10 1NS. Monday - Saturday 10am - 5pm, Sunday 12noon - 4pm. £5.50 / £4.50. 01380 727369. "An exhibition of treasures acquired by the Wiltshire Museum."

NYNEHEAD PAINTERS

12 May - 27 June

The Orangery, Nynhead Court, Nynhead, near Wellington, TA21 0BW. Wednesday - Monday 10am - 4pm. 01458 251640. "Work by students from 3 classes run in the Orangery at Nynhead Court, alongside work by tutors Clare Duvergier, Virginia Chester, and Jane Embleton."

SIMON QUADRAT: 'ODD MAN OUT'

12 May - 1 July

Sladers Yard, West Bay Road, West Bay, Bridport, DT6 4EL. Monday - Saturday 10am - 4pm, Sunday 12noon - 4pm. 01308 459511.

VANESSA GARDINER: 'SEA CLIFF'

12 May - 1 July

Sladers Yard, West Bay Road, West Bay, Bridport, DT6 4EL. Monday - Saturday 10am - 4pm, Sunday 12noon - 4pm. www.sladersyard.co.uk.



'POP ART IN PRINT'

12 May - 26 August

Royal Albert Memorial Museum, Queen Street, EXETER, EX4 3RX. Tuesday - Saturday 10am - 5pm. £4.50 / £3.50. www.rammuseum.org.uk. "Vibrant, sexy and very much of the moment, Pop Art reflected a fascination with the iconic status of celebrities and brands." Above: Gerald Laing 'Sandra' (Detail, screenprint, 1968)

BRICKS
EXHIBITION
SHARON JAMES
GARY SPRATT
ROB MILLS
26/05/18 - 29/06/18
ART - MUSIC - INSTALLATION - PERFORMANCE
L'ARTISHE GALLERY, 71 HIGH STREET
SWANAGE, DORSET BH19 2LY
01929 425050 / www.lartishegallery.com



OPEN 10 - 5 SEVEN DAYS A WEEK
DURING PURBECK ART WEEKS
AND DORSET ART WEEKS



  
FOLLOW L'ARTISHE GALLERY ON SOCIAL MEDIA
FOR DETAILS OF PERFORMANCE DATES AND TIMES

SWISS ARTISTS UK: 'MEMORIES'

14 - 27 May

The Old Brick Workshop, Higher Poole, WELLINGTON, TA21 9HW. 10am - 4pm. www.theoldbrickworkshop.com.

MARIELLA WOLFF: 'ANCIENT INTO NEW STRUCTURES'

16 - 22 May

The Gallery, Shaftesbury Art Centre, 11 Bell Street, SHAFTESBURY, SP7 0PX. Monday - Saturday 10am - 4pm. 01747 855243. "Working in oils and mixed media, Mariella will be exploring ancient structures, and transform them into a new visual statement."

TIF HUNTER: 'MIRROR MIRROR'

17 - 20 May

Messums Wiltshire, Place Farm, Court Street, TISBURY, SP3 6LW. Wednesday - Saturday 10am - 5pm, Sunday 10am - 4pm. www.messumswiltshire.com. "Tif Hunter produces 'tintypes', handmade, one-off images developed in the early days of photography."

ELSBETH BUFF

17 May - 5 June

LT Gallery, 1 Orchard Street, WESTON-SUPER-MARE, BS23 1RG. Tuesday, Friday and Saturday 10am - 4pm, Thursday 12noon - 7pm. 07730 431726 / www.ltgallery.com.

'PAINTINGS OF LANDSCAPES AND SEASCAPES'

18 - 23 May

The Courtyard Gallery, The Town Mill, Mill Lane, LYME REGIS, DT7 3PU. 10.30am - 4.30pm. www.townmillarts.co.uk. "Local scenes in acrylic and watercolour created by Marion Sawl."

'MIXED SUMMER SHOW'

18 May - 1 July

Tincton Gallery, The Old School House, TINCLETON, near Dorchester, DT2 8QR. Friday - Monday 10am - 5pm. www.tinctongallery.com. "New works by Sue Peake, Jenny Sutton, Kim Pragnell, and other gallery artists."

THE OLD BAKERY ARTISTS

19 May

The Friends Meeting House, York Street, BATH, BA1 1NG. 10am - 4pm. www.oldbakeryartists.co.uk.

ELISABETH BARRY: OPEN STUDIO

19 - 27 May

Brick Cottage Studio, Pound Lane, OAKHILL, BA3 5BG. 11am - 5pm. 07870 670620 / www.elisabethbarry.com. "Wheel-thrown porcelain tableware, jewellery and sample / seconds sale. Refreshments."



'MILFORD SOUND, NEW ZEALAND'

MOISH SOKAL: IN THE OPEN

"Sokal returns from New Zealand's South Island with fresh landscape paintings bursting with primal energy, alongside new landscapes from earlier trips to Peru, Scotland and Great Britain."

5 June - 22 July: Malthouse Gallery, East Lambrook Manor Gardens, Silver Street, EAST LAMBROOK, TA13 5HH. Tuesday - Sunday 10am - 5pm. £5.75 / £5.25. 07812 837825 / www.moishsokal.co.uk.

SARA CLAY

19 May - 15 June

Abbey Muse Art Gallery, 56 - 58 High Street, GLASTONBURY, BA6 9DY. Monday - Saturday 11am - 4pm. 07919 427048.

'A PASSION FOR PAINT'

21 May - 9 June

Ilminster Arts Centre, The Meeting House, East Street, ILMINSTER, TA19 0AN. Monday - Friday 9.30am - 4.30pm, Saturday 9.30am - 2.30pm. 01460 54973. "United by a passion for

paint and colour, Valerie Wall, Louise Melikoff, and Jenny Worrall exhibit their latest works."

B-SIDE: 'TEN SHOTS'

22 May - 2 June

Cafe & Foyer Galleries, Bridport Arts Centre, South Street, BRIDPORT, DT6 3NR. Tuesday - Saturday 10am - 4pm. www.bridport-arts.com. "Photographs capturing the unique and captivating Isle of Portland and the people and businesses that contribute to the evolving isle."

TREVOR HADDRELL

22 May - 28 June

Royal West of England Academy, Queen's Road, Clifton, BRISTOL, BS8 1PX. Tuesday - Saturday 10am - 5.30pm, Sunday 11am - 5pm. 0117 973 5129 / www.rwa.org.uk.

SANDY ROBERTS AND JANE SHEPHERD

23 May - 12 June

The Gallery, Shaftesbury Art Centre, 11 Bell Street, SHAFTESBURY, SP7 0PX. Monday - Saturday 10am - 4pm. 01747 855243.

LYNDA WHITE: 'KNOWING MY PLACE'

24 - 30 May

The Courtyard Gallery, The Town Mill, Mill Lane, LYME REGIS, DT7 3PU. 10.30am - 4.30pm. www.townmillarts.co.uk. "Contemporary landscape paintings that convey a compelling sense of place and season."

PETER MATTHEWS: 'NEW PAINTINGS'

25 May - 9 June

Fisherton Mill Gallery, 108 Fisherton Street, SALISBURY, SP2 7QY. Monday - Friday 10am - 5pm, Saturday 9.30am - 5.30pm. 01722 500200. "Peter Matthews showcases abstract-based works and atmospheric interiors, as well as his more familiar landscapes and architectural views."



NINA FRASER: 'BIRDSONG'

25 May - 12 June

Hatch Gallery, 7A Church Street, CHRISTCHURCH, BH23 1BW. Tuesday - Saturday 10.30am - 4pm. 01202 474644 / www.birdsongeditions.art. "Nina Fraser is a contemporary artist based in Dorset and Portugal, exhibiting her newest collection of lively and fluid birds created in watercolour and ink." Above: 'Chicken Town'

SUBSCRIBE TO EVOLVER

£24 (6 issues starting with EVOLVER 106 (July and August 2018 issue))

| |
|----------|
| NAME |
| ADDRESS |
| |
| |
| |
| POSTCODE |

Send cheque (payable to 'Evolver Media') to:
EVOLVER MEDIA, 8 BUCKLAND ROAD, PEN MILL TRADING ESTATE,
YEovil, SOMERSET BA21 5EA



BLOOM

This vibrant and uplifting exhibition is a must see for all tastes in the visual arts. Featured artists are each responding to BLOOM in their unique way.

Saturday 2 - Saturday 23 June
Tuesday - Saturday 10 - 4



**Heritage Courtyard
Studios and Gallery**

6 Heritage Courtyard, Sadler Street,
Wells, Somerset BA5 2RR
07974 255016
www.heritagecourtyardstudio.com

VISUAL ARTS



'THE STILL WOOD'

STORIES FROM THE CITY, STORIES FROM THE SEA

"Chelsea Davine explores through photography and drawings the inspiration behind her large scale oil paintings."

29 June - 11 July: The Malthouse Gallery, The Town Mill, Mill Lane, LYME REGIS, DT7 3PU. 10.30am - 4.30pm. www.townmillarts.co.uk.

LYME REGIS ART SOCIETY

26 May - 6 June

The Malthouse Gallery, The Town Mill, Mill Lane, LYME REGIS, DT7 3PU. 10.30am - 4.30pm.

www.townmillarts.co.uk.

'WORKING THE LAND'

26 May - 16 June

Hybrid Gallery, 51 High Street, HONITON, EX14 1PW. Tuesday - Saturday 10am - 5pm. 01404 43201 / www.hybrid-devon.co.uk. "Debbie Lush, Alison Stewart, Tony Williams and Paula Youens pay homage to our rural setting in East Devon."

'HEADS'

26 May - 8 July

Messums Wiltshire, Place Farm, Court Street, TISBURY, SP3 6LW. Wednesday - Saturday 10am - 5pm, Sunday 10am - 4pm. 01747 445042 / www.messumswiltshire.com. "Sculptured heads dating from ancient Greece to the present day."

HENRY LAMB: 'PEOPLE & PORTRAITS'

26 May - 8 July

Messums Wiltshire, Place Farm, Court Street, TISBURY, SP3 6LW. Wednesday - Saturday 10am - 5pm, Sunday 10am - 4pm. 01747 445042 / www.messumswiltshire.com.

'THE CHEMISTRY OF BRONZE'

26 May - 15 July

Long Gallery, Black Swan Arts, 2 Bridge Street, FROME, BA11 1BB. Monday-Saturday 10am - 4pm. 01373 473980 / www.blackswan.org.uk.

WORTH MATRAVERS CREATIVE ARTISTS

27 May - 10 June

Village Hall, Pykes Lane, WORTH MATRAVERS, near Swanage, BH19 3LQ. 10.30am - 4.30pm. 01929 439056 / 07944 625979. "A new venture celebrating our creative artists.

Painters, ceramicists, cabinet makers, wood turners, spinners, crochet makers, stone carvers, sculptors, film makers, and jewellery makers."

LIZ SHEWAN: 'AFFAIRS OF THE HEART'

31 May - 13 June

The Courtyard Gallery, The Town Mill, Mill Lane, LYME REGIS, DT7 3PU. 10.30am - 4.30pm. www.townmillarts.co.uk.

'ART@DARTS'

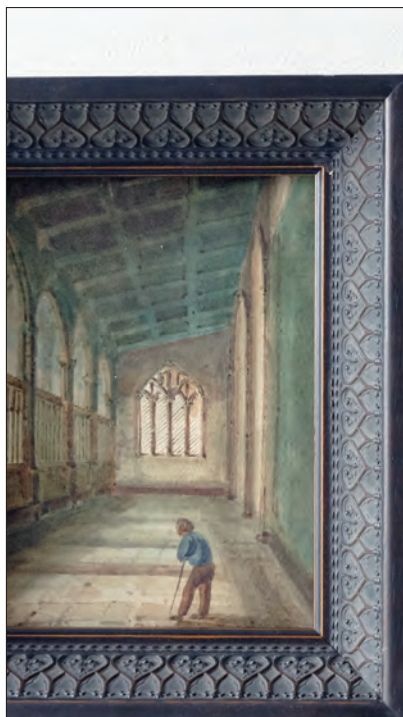

1 - 3 June

The Estuary Room, Darts Farm, TOPSHAM, EX3 0QH. Friday and Saturday 10am - 5pm, Sunday 10am - 4pm. 01392 878200. "Mixed exhibition of paintings by Ray Balkwill, Judy Hempstead, Penelope Timmis, Jo Vollers, and Tony Williams."

'SEA & SKY'

1 - 30 June

Creative Gallery, St John's Hill, WAREHAM, BH20 4NB. 10am - 5pm. 01929 551700 / www.creativegallerywareham.co.uk. "Colin Jones' glazes evoke the sea and sky - blues through subtle greys, dancing with crystals. Stoneware pots with function as well as beauty."

picture framing
fine art printing
exhibition services

www.mount-art.co.uk | info@mount-art.co.uk | 01373 473894

JOHN LEACH GALLERY



'A View of my Own'

LOUISE WAUGH

24 March - 29 May 2018

Monday - Saturday, 9-1, 2-5 (inc bank holidays)

Muchelney Pottery
Muchelney, Nr Langport TA10 0DW

www.johnleachpottery.co.uk



ALI HERBERT CERAMICS

Summer Pottery Workshops

visit www.aliherbert.co.uk to book
your place or call 07845 395 722



DAVID DANIELS 'BURNHAM OVERY STAITHE' (Digital drawing)

THE TRANSFORMED LAND

"Work by various artists who are interested in place. Some frequently return to the same place, others are visitors, some are residents, and some are creators of imagined places."

26 May - 16 June: Ace Arts, Market Place, SOMERTON, TA11 7NB. Tuesday - Saturday 10am - 5pm. 01458 273008 / www.acearts.co.uk.

CORINNA BUTTON: 'NEW WORK'

1 - 30 June
Axle Arts, Leighton Road, BATH, BA1 4NF. Monday - Friday 10am - 12noon. 01225 461230 / www.axlearts.com.

FROME COMMUNITY EDUCATION

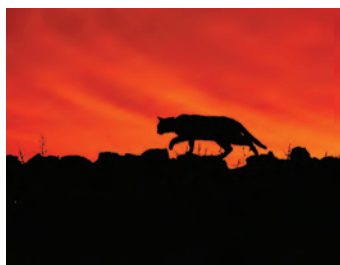
2 - 16 June
Round Tower, Black Swan Arts, 2 Bridge Street, FROME, BA11 1BB. Monday - Saturday 10am - 4pm. 01373 473980. "Showcase of local teaching and community classes in a variety of media."

'BLOOM'

2 - 23 June
Heritage Courtyard Studios and Gallery, 6 Heritage Courtyard, Sadler Street, WELLS, BA5 2RR. Tuesday - Saturday 10am - 4pm. 07974 255016 / www.heritagecourtyardstudio.com. "This vibrant and uplifting exhibition is a must see for all tastes in the visual arts."

'SUMMER EXHIBITION'

2 June - 28 August
John Leach Gallery, Muchelney Pottery, MUCHELNEY, near Langport, TA10 0DW. Monday - Saturday 9am - 1pm and 2 - 5pm. 01458 250324. "A lively mixed exhibition featuring paintings by John Gammans, metal garden sculpture by Chris Kampf, and silver jewellery by Holly Webb."



'CHASING THE LIGHT'

5 - 10 June
Space Gallery, Arts West Side, 6 West Street, Old Market, BRISTOL, BS2 0BH. Tuesday - Saturday 12noon - 6pm, Sunday 12noon - 4pm. 07842 233085. "An exploration in photography of the remote Orkney island of Sanday."

BEAMINSTER AND COLFOX A-LEVEL SHOW

6 - 14 June
Bridport Arts Centre, South Street, Bridport, DT6 3NR. Tuesday - Saturday 10am - 4pm. www.bridport-arts.com.

LAURA TUCKER: 'PHOTO-SYNTHESIS'

7 - 19 June
LT Gallery, 1 Orchard Street, WESTON-SUPER-MARE, BS23 1RG. Tuesday, Friday and Saturday 10am - 4pm, Thursday 12noon - 7pm. 07730 431726 / www.ltgallery.com.

'VIEWPOINTS'

7 - 20 June
The Malthouse Gallery, The Town Mill, Mill Lane, LYME REGIS, DT7 3PU. 10.30am - 4.30pm. www.townmillarts.co.uk.



EMMA KEMP: 'ART OF ACROBATICS'

8 - 10 June
Hours, 10 Colston Yard, BRISTOL, BS1 5BD. Friday 6 - 9pm, Saturday and Sunday 11am - 5pm. 07766 054659. "Sculptures depicting the pinnacle of a movement, plus drawings and prints. Performances on Friday 8th for the launch, bringing the artwork to life."

'SUBVERSIVE SURFACES: TABOO AND FRAGILITY'

9 June - 14 July
Trowbridge Town Hall, Market Street, TROWBRIDGE, BA14 8EQ. Monday - Friday 10am - 4pm, Saturday 10am - 2pm. 01225 774306 / www.townhallarts.co.uk. "In this unique exhibition, Gina Baum and Lou Baker challenge modern perceptions of the human body."

'HOT STUFF!'

11 - 29 June
Ilminster Arts Centre, The Meeting House, East Street, ILMINSTER, TA19 0AN. Monday - Friday 9.30am - 4.30pm, Saturday 9.30am - 2.30pm. www.themeetinghouse.org.uk. "Vibrant and colourful paintings and prints by Tilly Willis, Jane Mowat, and Judy Willoughby."

SANDRA BRANT: 'UNEXPECTED'

11 June - 7 July
Princess Theatre Arts Lounge, BURNHAM-ON-SEA, TA8 1EH. Tuesday - Friday 10am - 3pm, Saturday 10am - 1pm. 01278 793099. "Mixed media abstracts and seascapes."

'CREATIVE AND BRAVE'

13 - 26 June
The Gallery, Shaftesbury Art Centre, 11 Bell Street, SHAFTESBURY, SP7 0PX. Monday - Saturday 10am - 4pm. 01747 855243.

'PAPER AND CLAY'

15 - 27 June
The Courtyard Gallery, The Town Mill, Mill Lane, LYME REGIS, DT7 3PU. 10.30am - 4.30pm. www.townmillarts.co.uk. "A diverse and exciting exhibition by four established ceramicists and a collagraph printer: Linda Bristow, Cath Bloomfield, Alison Potter, Belinda Brownlee, and Denise de Freitas."

'SUMMER EXHIBITION'

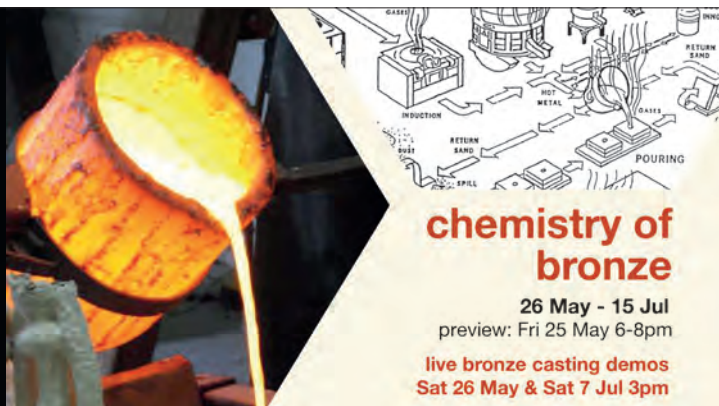
15 June - 11 August
Artwave West, MORCOMBELAKE, DT6 6DY. Tuesday - Saturday 10am - 5pm. 01297 489746 / www.artwavewest.com. "The Summer Exhibition is the most varied show of the year, featuring a constantly changing collection of artworks, including a special selection by the highly collectable artist, Rebecca Fontaine-Wolf."

PULL-OUT SUPPLEMENT

cicatrix



14 April - 19 May
Artists' Talk
Sat 28 Apr 2pm



chemistry of
bronze

26 May - 15 Jul
preview: Fri 25 May 6-8pm

live bronze casting demos
Sat 26 May & Sat 7 Jul 3pm

galleries | studios | shop | cafe
2 Bridge Street, Frome BA11 1BB
01373 473980 / www.blackswanarts.org.uk



BLACKSWANARTS

OPEN: Mon - Sat 10am-4pm
and Independent Market Sundays
FREE ENTRY | Registered Charity No.292463

WESSEX FESTIVALS GUIDE 2018



B-SIDE FESTIVAL (8 - 16 SEPTEMBER)

WESSEX FESTIVALS 2018

BEAF

28 April - 7 May

Various locations in BOURNEMOUTH. www.b-e-a-f.co.uk. "From exhibitions, theatre productions, concerts, comedy, cabaret and film screenings, a vibrant and colourful street festival, plus the launch of the first ever art gallery in a police box, this will be one of the liveliest and most imaginative festivals to hit town!"

SHERBORNE ABBEY FESTIVAL

4 - 8 May

Sherborne Abbey, SHERBORNE, Dorset. www.sherborneabbeyfestival.org/ 01935 815341. "One of Dorset's most welcoming and accessible musical events."

LYME REGIS FOSSIL FESTIVAL

5 and 6 May

Various venues in LYME REGIS and Charmouth Heritage Centre, CHARMOUTH, Dorset. Free entry. www.fossilfestival.com/ 01297 445021. "Enjoy one of Dorset's largest science festivals. Find out all about the amazing Jurassic Coast with talks, walks and incredible interactive activities."

LARKHALL OPEN STUDIOS

5 - 7 May

Various locations throughout LARKHALL, Bath. www.larkhallopenstudios.co.uk.

CLOTH ROAD ARTS TRAIL

5 - 13 May

Various locations in WEST WILTSHIRE. www.clothroadartists.com. "A nine day visual feast, celebrating the superb creativity of talented local artists and craftspeople."

OD ARTS FESTIVAL

11 - 13 May

Various locations in EAST AND WEST COKER, Somerset. www.odartsfestival.co.uk/ 01935 862201. 10am - 5pm. Free entry. "The art of rivalry in rural Somerset. Three days of exhibitions and events weaving a journey through past, present and future rivalries, exploring artistic, romantic and neighbourly frictions."

THE BATH FESTIVAL

11 - 27 May

Various locations in BATH. www.bathfestivals.org.uk/ 01225 463362. "The Bath Festival returns as a 17 day multi-arts festival, celebrating the city with music and literature at its heart, engaging with the wider community and bringing the streets of Bath to life."



MISS HIGH LEG KICKS PORTLAND PROMETTES

B-SIDE

"This year b-side takes you on a journey around Portland, guided by artists new creations giving you special access to secret places and forgotten sites: experience light art in underground military tunnels, take a trip around the island with 'Fly By Night' airways, catch a selfie with a celebrity from Portland's Infamous Lookalike Agency or high kick your way around the island with the Portland Promettes. There's a full on programme with walks, talks, films, workshops, live music and much more. Always changing and constantly innovative, b-side festival aims to surprise and delight audiences showcasing high-quality international artists and home-grown talent alike. Line-up includes Alistair Gentry, Ania Bas, Claudia Antonius & Jörg Jozwiak, Deborah Evans, Farhad Berahman, Joe Borez, Katie Surridge & Stephen Coles, Laura Hopes, Leni Dothan, Miss High Leg Kick, Raphael Daden, Rosie Leventon, Sue Palmer & Sheila Ghelani, Thomas Hughes."

8 - 16 September: ISLE OF PORTLAND, Dorset. www.b-side.org.uk.

NEWBRIDGE ARTS TRAIL

12 and 13 May

Various locations in NEWBRIDGE and LOWER WESTON, Bath. www.newbridgeartstrail.com. "Artists and makers share their work and process."

SOUTHBANK BRISTOL ARTS TRAIL

12 and 13 May

Various locations in SOUTHVILLE, BEDMINSTER, and ASHTON, South Bristol, BS3. 11am - 6pm. www.southbankbristolarts.co.uk. "The Trail attracts a large number of visitors who enjoy meeting and talking to the artists, viewing their work and learning about all the processes involved."

WIMBORNE LITERARY FESTIVAL

12 - 22 May

Various venues in WIMBORNE, Dorset. www.wimborneliteraryfestival.co.uk.

WIDCOMBE ART TRAIL

19 and 20 May

Various locations in WIDCOMBE, Bath, BA2 6AA. Free entry. 10.30am - 5.30pm. www.widcombeartrail.com.

ART WEEK EXETER

22 - 28 May

Locations throughout EXETER, Devon. www.artweekexeter.org.uk. "Art Week Exeter showcases the best Exeter has to offer, alongside the work of nationally- and internationally-renowned artists."

CURSUS CIDER & MUSIC FESTIVAL

25 - 27 May

SIXPENNY HANDLEY, near Salisbury, Dorset, SP5 5RX. www.cursusfestival.com. "Friendly, inclusive 400 capacity festival in the beautiful surroundings of Dorset's Cranborne Chase. Line-up includes Skinny Lister, The Rumjacks, The Eskies, New Town Kings, Skimmity Hitchers."

SHINDIG WEEKENDER

25 - 27 May

Gilcombe Farm, BRUTON, Somerset, BA10 0QE. www.shindig-events.co.uk. "Kickstarting summer, Shindig offers a soulful dose of relaxation and revelry to funky warriors and their families. Line-up includes Soul II Soul, Jungle Brothers, Dub Pistols, London Posse, The Cuban Brothers, Slamboree, Blak Twang, The Correspondents."

CHIPPENHAM FOLK FESTIVAL

25 - 28 May

Town Centre, CHIPPENHAM. www.chippfolk.co.uk. "Great concerts, display teams, amazing ceilidhs and dances, all in a lovely Georgian country town."

JAZZ JURASSICA

25 - 28 May

LYME REGIS, Dorset. www.jazzjurassica.co.uk/ 01297 442138. "The ultimate jazz weekender by the sea. Line-up includes Fliss Gorst Band, James Taylor Quartet, Liane Carroll Trio, Jazz Babylon, Slinky Machine, Phillip Clouts Trio."

CAMPING BE CIDER SEASIDE 6

25 - 28 May

Bredy Farm, BURTON BRADSTOCK, Dorset, DT6 4ND. www.bredyfarm.bigcartel.com.

BATH FRINGE FESTIVAL

25 May - 10 June

Various venues in and around BATH. www.bathfringe.co.uk. "Bath's own home-grown festival of all the arts takes place in venues, in places that aren't venues, and in the streets and open spaces of our fair city. We run with whatever anyone wants to put on, but we have particularly strengths on outdoor performance, theatre and visual arts."

DOT TO DOT

26 May

Various venues, BRISTOL. www.dottodotfestival.co.uk. "Line-up includes The Horrors, Dermot Kennedy, Pale Waves, Marika Hackman, Mahalia, Turnover, Bad Sounds, Cassia, The Regrettes, Gus Dapperton."

EBC

SUNSET RIDGE

SUNDAY 8 JULY 2018

THE BILLY SHINBONE SHOW • DESIGN GRIS-DE-LIN • POP PARKER

THE LEVELS • DUB LIBERATORS

+ MORE TO BE CONFIRMED + DJ ALAN FLINT

PRINCE OF WALES • HAM HILL • SOMERSET TA14 6RW • 1 - 8 PM • FREE ENTRY
SUGGESTED DONATION £5 • ALL PROFITS TO CHARITY (TBC)

FROME FESTIVAL

FRIDAY 6th to SUNDAY 15th JULY 2018

200 Years of Mary Shelley's Frankenstein

BADLY DRAWN BOY

BLAZIN' FIDDLES

ASTON MERRYGOLD

LEO SAYER

THE BUSQUITOS & PEE WEE ELLIS / MOZART'S BASTIEN AND BASTIENNE & BACH'S COFFEE CANTATA / ILLYRIA THEATRE CO / FURTHER HEADLINE ACTS TBC

The Food Feast, Hidden Gardens, Exhibitions, Open Studios, Small Publishers Fair, Children's Festival, Films, Drama, Poetry, Literary events, Classical concerts, Workshops, Walks, Talks and much much more.

COMEDIANS: TOM ALLEN / JOHN COOPER CLARKE

VIV GROSOP / GEORGE EGG -ANARCHIST CHEF

fromefestival.co.uk

WESSEX FESTIVALS 2018

LOVE SAVES THE DAY

26 and 27 May
Eastville Park, BRISTOL, BS5 6XA.
11am - 11pm.
www.lovesavestheday.org.

BEAR FLAT OPEN STUDIOS

26 - 28 May
Locations in and around Bear Flat,
BATH. 11am - 5pm.
www.bearflatartists.co.uk.

DEVIZES ARTS FESTIVAL

31 May - 17 June
Various venues in DEVIZES, Wiltshire.
www.devizesartsfestival.org.uk. "Three week festival of music and the arts."

WESSEX FOLK FESTIVAL

1 - 3 June
Weymouth Harbour, WEYMOUTH,
Dorset, DT4 8TJ. Free entry.
www.wessexfolkfestival.com.
"Weymouth's picturesque historic harbour hosts continuous music on two outdoor stages, dancing from up to 30 Morris Dance sides, workshops and pub sessions. Line-up includes Lewis Clarke and The Essentials, Gadarene, Wild Willie Barrett, Amy Hopwood."

HOME FARM FEST

8 - 10 June
Home Farm, CHILTHORNE DOMER,
near Yeovil, Somerset, BA22 8RD.
www.homefarmfest.co.uk.

CONTEMPORARY CRAFT FESTIVAL

8 - 10 June
Mill Marsh Park, BOVEY TRACEY,
Devon, TQ13 9AL.
www.craftsatboveytracey.co.uk.

WIMBORNE MINSTER FOLK FESTIVAL

8 - 10 June
Various locations in WIMBORNE
MINSTER, Dorset.
www.wimbornefolk.co.uk. "As is traditional on the second weekend of June, the streets, pubs and concert halls are filled with morris dancers, music, and much more!"

BS9 ARTS TRAIL

9 and 10 June
Various locations in WESTBURY-ON-TRYM, HENLEAZE and STOKE BISHOP,
BRISTOL, BS9. 11am - 5pm.
www.bs9arts.co.uk / 07791 488671.

GREEN SCYTHE FAIR

10 June
Thorney Lakes, MUCHELNEY, near
Langport, Somerset, TA10 0DW. 11am -
11pm. www.greenfair.org.uk. "Magical one day environmental fair in a beautiful setting on the Somerset Levels."



WHISKY SHIVERS

BEER AND BLUEGRASS

"Beer and Bluegrass Festival is now in its fourth successful year and attracting top quality Bluegrass and Americana acts from across the world. Situated between Poole and Bournemouth it's only minutes away from the finest beaches in the UK with very easy transport links. Line-up include Whisky Shivers, The Hot Seats, Midnight Skyracer, Naomi Bedford, The Propane Brothers, Cup O' Joe, Wesley Randolph Eader, Cardboard Fox, Carrivick Sisters, Mr CD Wallum, Griffin and Collier." **27 and 28 July:** Victoria School, 12 Lindsay Road, POOLE, BH13 6AS. www.beerandbluegrass.co.uk.

PETHERTON FOLK FEST

16 June
Various locations in SOUTH
PETHERTON, Somerset. 10am - 6pm.
www.pethertonfolkfest.org.uk. "A full day of entertainment for the whole family. Singers, dancers, and bands here to entertain you for free!"

BRIDPORT FOOD FESTIVAL

10 - 16 June
Various locations in BRIDPORT, Dorset.
www.bridportfoodfestival.co.uk.

LOVE ROCKS

15 and 16 June
St Leonards Farm, Ringwood Road,
Ferndown, BOURNEMOUTH, BH22
0AQ. www.sanctuarypromotions.co.uk.

DORSET MIDSUMMER MUSIC FESTIVAL

15 and 16 June
Warren Farm, BULBARROW, Blandford
Forum, Dorset, DT11 0HQ.
www.midsommernmusic.co.uk. "A family friendly music festival set in an area of outstanding natural beauty."

SIDMOUTH LITERARY FESTIVAL

15 - 17 June
Various locations, SIDMOUTH, East
Devon. www.sidmouthlitfest.co.uk /
01395 579969.

SOMERFEST

16 June
Town Centre, TAUNTON, TA1 4AA.
11am - 6pm. www.somerfest.net /
01458 259638. "Now in its sixth year, Somerfest celebrates Taunton's national status as a Garden Town and 250 years of Circus in UK. There will be aerialist and acrobats, musicians and performers, dance and street theatre, family and children activities with local food stalls, arts and crafts."

MIDSOMER ARTS FESTIVAL

16 - 24 June
Various locations in MIDSOMER
NORTON, Wessex.
www.midsomerartsfestival.weebly.com /
01761 419133. "The fourth annual arts festival showcases painting, sculpture, craft, music, drama and dance by locals and visitors."

TEIGNMOUTH FOLK FESTIVAL

22 - 24 June
TEIGNMOUTH, South Devon.
www.teignmouthfolk.co.uk / 01803
290427. "A small friendly traditional festival in a lovely seaside town. Line-up includes Spinach For Norman, Ian Bruce, The Crows, City of Plymouth Pipe Band, Windjammer."

CHESIL ROCKS

23 June
Higher Farmhouse, LANGTON
HERRING, Dorset, DT3 4JD. 11am -
12midnight. www.chesilrocks.com. "A small and intimate music and arts festival, in a beautiful setting."

BEAMINSTER FESTIVAL

23 June - 1 July
Various locations in BEAMINSTER.
www.beaminsterfestival.com. "Nine days of music, theatre and art."

CHALKE VALLEY HISTORY FESTIVAL

25 June - 1 July
Church Farm, Bury Lane, BROAD
CHALKE, near Salisbury, Wiltshire SP5
5DP. www.cvhf.org.uk / 01722 781133.
"A week of talks, discussions, debates, as well as extensive and immersive living history and historic air displays, the aim is to excite, enthral and entertain about the past."

GOREN FESTIVAL

29 and 30 June
Goren Farm, STOCKLAND, Honiton,
Devon, EX14 9EN. "A packed, family-friendly, music festival with buckets of integrity! Go wild in the wildflower meadows! Line-up includes Indian Man, Ewan McLennan, Solana, Stompin' Dave & His Bluegrass Band, Cut A Shine, The Dilly Boys, Will Odgers & Joe Mansfield, Jason Baxter's Little Big Band, Grace Gillan & Jake Miller, The Peaceful Hooligan, Samantics, Owen & Friends, The Old Time Wasters, Joel Cottrell, The Good Ol' Boys."

DARK HOLLER

29 and 30 June
Halls Farm, LYTCHETT MATTRAVERS,
Dorset, BH16 6DP.
www.rusticstomp.co.uk. "This intimate festival encompasses all the darker corners of the roots musical world."

WEST SOMERSET FOLK FESTIVAL

29 June - 1 July
Recreation Hall, CARHAMPTON, near
Minehead, Somerset.
www.westsomersetfolkfestival.co.uk. "Line-up includes Sue Stevens, Hummingbird, Kevin Adams, Mike Scott, Gerry Mogg, Martyn Babb, Wild Thyme Border Morris."

INTERNATIONAL
BEER 4TH ANNUAL
★ ★ ★ AND ★ ★ ★
BLUEGRASS
★ 2018 ★
Friday 27th July
Saturday 28th July
Victoria School
12 Lindsay Rd Poole England BH13 6AS
Branksome

www.beerandbluegrass.co.uk

THE BEST OF BLUEGRASS & AMERICANA

over 18 hours of Great Music
and over 50 REAL ALES & CIDERS



SOMERSET ART WEEKS 2018

SOMERSET OPEN STUDIOS 15 - 30 SEPTEMBER

Now the largest event in Somerset for visual artists and makers, Somerset Open Studios allows a rare opportunity to go behind the scenes and see inside artists' studios, temporary working spaces and other work locations. Visitors can find out first hand about the creative process through demonstrations, workshops, talks and special events, to educate, inspire and delight.



www.somersetartworks.org.uk

Telephone: 01458 253800 / Facebook: @somersetartworks
Twitter: @SAW_Somerset / Instagram: somerset_art_works



GRACE LOVELASS

PURBECK ART WEEKS

"Purbeck Art Weeks Festival offers a rich array of open studios and exhibitions across beautiful Purbeck. You will find paintings, sculpture, printmaking, glass, jewellery, photography, wood, textiles and ceramics and more, to enjoy, buy or admire. Rollington Barn hosts PAW's collective exhibition showcasing at least one artwork from each of the around 100 artists taking, and the results of the Purbeck Young Artists' workshops. Alongside all the art PAW offers a stunning range of events to entertain, challenge and inspire. Highlights include the Gabrieli Consort, who open the Festival with 20th Century choral masterpieces (26 May), I Fagiolini performing a recreation of Monteverdi's 1620 Vespers (2 June), and new to PAW - the English Cornett & Sackbut Ensemble. With talks, a film, recitals, poetry and jazz, as well as workshops and community events, there is again something for everyone to enjoy! PAW is a community based festival and proud of it!"

26 May - 10 June: Various locations, ISLE OF PURBECK, Dorset.
www.purbeckartweeks.co.uk

extraordinary
events in
extraordinary
places

14 — 23
september
2018



supported through public funding by
**ARTS COUNCIL
ENGLAND**

www.insideoutdorset.co.uk

WONDER FIELDS

29 June - 1 July
Great Fulford, DUNSFORD, Exeter,
Devon, EX6 7AJ.
www.wonderfields.co.uk

SOUTHCIDER FESTIVAL

29 June - 1 July
Bredy Farm, BURTON BRADSTOCK,
Dorset, DT6 4ND.
www.southciderfestival.com

GILLFEST

29 June - 8 July
Various venues, GILLINGHAM, Dorset.
www.gillfest.org

FOLK ON THE QUAY

30 June
The Quay, POOLE.
www.folkonthequay.co.uk. "Free folk
music festival with outdoor music
stages, two ceilidh dances and over
twenty teams of morris dancers."

PARTY BY THE PARRETT

30 June
The Rec, KINGSBURY EPISCOPI,
Somerset, TA12 6AX. 1 - 11.30pm.
www.partybytheparrett.co.uk

WELLIESTOCK FESTIVAL

30 June
WELLINGTON, Somerset.
www.wellistock.com

CREDITON OPEN STUDIOS AND ARTISTS TOWN TRAIL

30 June - 8 July
Locations throughout CREDITON,
Devon. www.creditonartscentre.org

EXETER CRAFT FESTIVAL

5 - 7 July
Exeter Cathedral, EXETER.
www.exetercraftfestival.co.uk. "A 3-day
celebration of the very best artists and
makers based in the South West."

PRIDDY FOLK FESTIVAL

6 - 8 July
Priddy Green, PRIDDY, Somerset, BA5
3BB. www.priddyfolk.org. "This friendly
festival is held in the idyllic setting of
Priddy Village Green high on the
beautiful Mendip Hills AONB near
Wells in Somerset. Now in its 27th year
this festival has a reputation for
exciting new folk. Line-up includes Ross
Ainslie & Jarlath Henderson, Mendip
Folk Choir, Issy Emeney, Alice Florence
and the Vines, Bookshopband,
Midnight Skyracer, Edgelarks, The
Drystones, Three Cane Whale, Kate
Griffin & Ford Collier, Perkelt, Pons
Aelius, Vera Van Heeringen Trio,
Flatville Aces, Gracie Petrie, Alden
Patterson & Dashwood, Dippermalkin,
Imar, Blue Rose Code, Anxo Lorenzo,
Sam Kelly, The Young 'Uns."

UK INTERNATIONAL BOOGIE WOOGIE FESTIVAL

6 - 8 July
Venues throughout STURMINSTER
NEWTON, Dorset.
www.ukboogiewoogiefestival.co.uk. "A
must for any boogie woogie
enthusiasts and just plain fun for
anyone who likes live music."

PULL-OUT SUPPLEMENT

DORSET ART WEEKS 2018

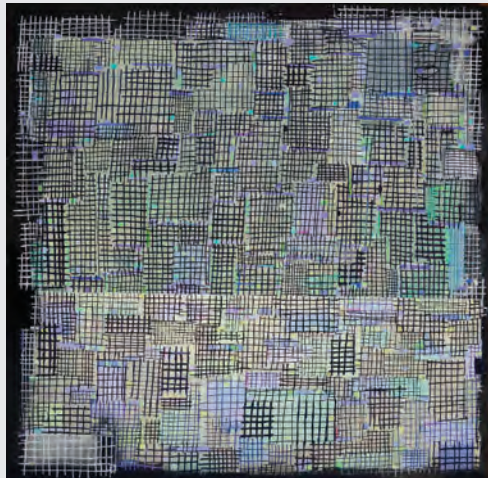


MICHELLE GRIFFITHS (VENUE 61)

DORSET ART WEEKS 2018



SARAH HOUGH (VENUE 150)



ROB WOOLNER (VENUE 33)



JIM HUNTER (VENUE 150)

Every alternate year artists in Dorset open their studio doors and share the secrets of their practice. It is a magical experience visiting an artist in their studio being offered the opportunity to talk to them about what they do and how they do it. 2018 reveals itself as a year where many artists appear to be more contemplative, producing work that has its roots in slow making and deep thinking. Some are testing their comfort zones by trying out new materials and others have re-located and are responding to a new place. As always painting seems to predominate but Dorset is rich in sculpture, drawing, furniture, textiles, photography and printmaking as well.

ROB WOOLNER (Venue 33) has moved to a beautiful new studio space designed in collaboration with the architectural practice YOU&ME. Responding to Rob's work the architects have created a building, which externally, has echoes of Rob's visual language: a long thin rectangular shape, a window, centered in a monochrome base of Sho shugi ban timbers, a Japanese technique of charring wood which produces a beautiful silvery black finish. Internally the white uncluttered walls and spatial proportions provide contemplation and quiet. Rob's work has shifted too, partly in response to the space. Pattern, shape and greys continue to be the foundation but there is an emphasis on stronger hues: "Perhaps I am taking a less tentative approach to colour as I learn to understand the emotive meaning of saturated colour."

Another must visit location is Durlston Castle (Venue 150) with its glorious views of the sea out towards Old Harry Rocks. Coast path, an exhibition of work by artists in residence JIM HUNTER and SARAH HOUGH is a response to the location, the coastal path that runs through the country park and the surrounding area. A fascinating enquiry which echoes both the process of making art and the circuitous nature of the paths themselves where, as Jim says: "the way is not always direct or readily discernible and includes detours, dead-ends and circularity without any easy short-cuts". Both artists work outside directly in response to the landscape although Jim returns to the studio to distill his ideas into his elemental paintings. The main focus of Sarah's work is her



Kit Glaisyer

253 DORSET ART WEEKS 26 MAY - 10 JUNE

kitglaisyer.com

St Michael's Studios

Bridport Dorset DT6 3RR

DORSET ART WEEKS 2018



MARK MEGILLEY (VENUE 204)



PETTER SOUTHALL (VENUE 246)



BRIAN RICE (VENUE 284)

sketchbooks, which reveal her passion for returning again and again to the same location in all weathers, recording sound as well as the visual to gain a true insight into her surroundings.

BRIAN RICE (Venue 284) and JACY WALL's (Venue 283) work spaces can be found down a steep track, the ancient house hidden from the road. Brian has been making his powerful paintings and prints for over fifty years and he continues to develop the threads of landscape and archaeology in his abstract work in a way that is constantly fresh and exciting. Some of his latest work is more geometric, a move away from the dots and curves of the *Halla* series, with a softening of hue towards greys and ochres as well. Jacy's concern with mending has moved forward into experiments with

cutting and pasting in her woven textiles and she has also been secretly playing around with clay so don't miss her "installation of wonky pinch pots"!

Just down the road in this art-rich area of the county are BJÖRK HARRALDSDÓTTIR's monumental ceramic forms with bold black-lined decoration (Venue 282) and the BONFIELD BLOCK PRINTERS (Venue 288) whose confident pattern making and use of monochrome bear an interesting relationship to Bjork's work. AMANDA POPHAM's delightfully quirky hand-built figures are always a delight (Venue 284). Dipping down from these narrow winding lanes towards Lyme Regis is the studio of painter JANE HEDGES (Venue 278). Jane's work is rooted in the landscape she inhabits but her exquisitely

subtle colouring and slow patterning suggest echoes of hotter climates. Looking at the tessellations in her work I am reminded of cool marble floors and the pierced Islamic screens in the Victoria and Albert Museum.

Sladers Yard in West Bay (Venue 246) is home to the beautifully crafted furniture of PETTER SOUTHALL. Simplicity and longevity are his guiding principles and a response to materials over a long slow making process, which is itself in the nature of a meditation. SIMON QUADRAT's paintings, a palette of ochres, grey-blues and reds, are also on show here. His fifties childhood revisited, focusing on idiosyncratic half remembered characters who stare out from an utterly different world. On show in a new studio space below Eggardon (Venue 305) are drawings and new 3D work by



Venue 299 Giladjan Gallery

IMPRESSIONIST ART WITH COLOUR
AND MOVEMENT

Impressionist artist. Paintings of sea and landscapes. With colour and movement of architectural style. Taking your eye as you walk into a room, making a strong use of space. Malcolm Giladjan's paintings bring warmth and colour. It is said that his paintings make people happy.

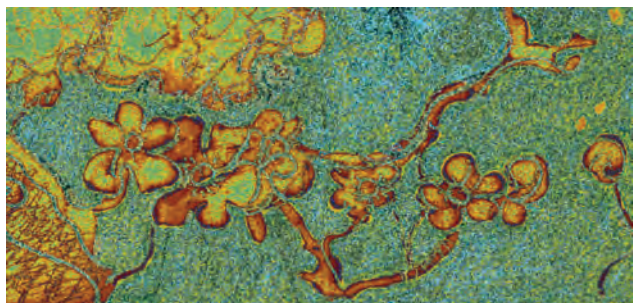
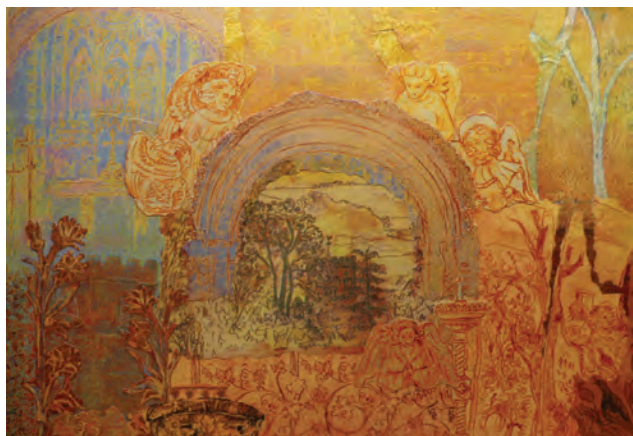
Old School Hall, Mapperton, DT8 3NR
10.30am - 5pm
01935 83261 / 07547 854807
malcolmgiladjan@gmail.com
www.giladjan.co.uk



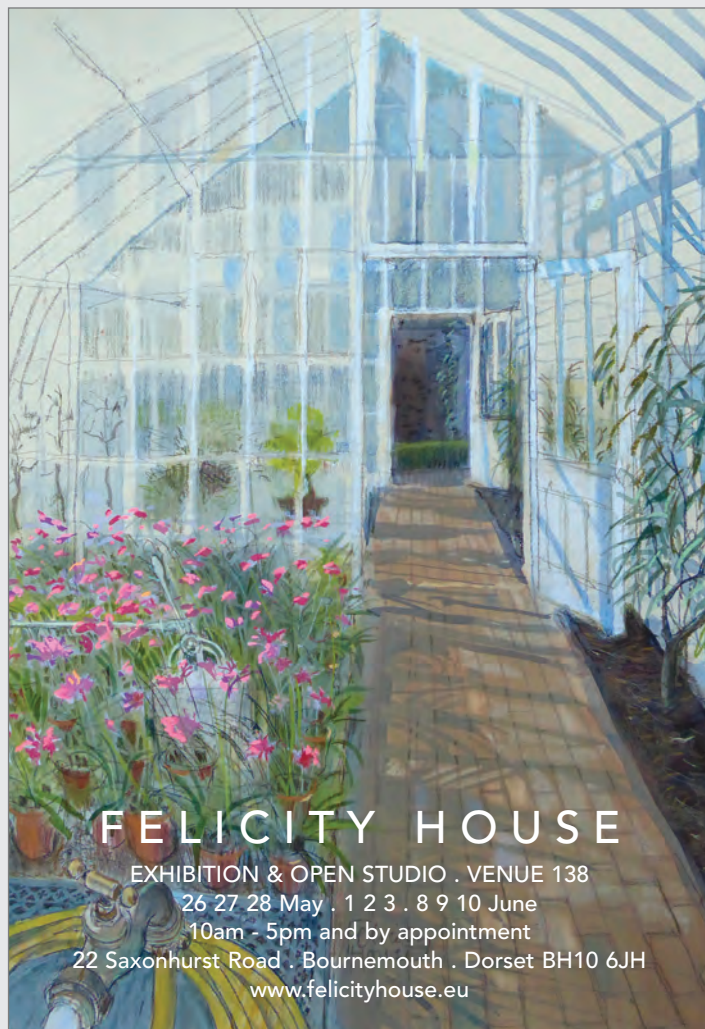


TIM BOOTH
Open Studio 292

CIRCUS . LANDSCAPE . ABSTRACT
The Studio, Wantsley Farm, Beaminster. DT8 3PT
26th May - 10th June. Open daily 9-12am or by apt



Rosie Britton www.rosiebritton.co.uk
Dorset Art Weeks Venue 309
4 – 10 June or by appointment, 01308 485574
Ongoing collage project on local churches
Also pastels, paintings, prints, collages



FELICITY HOUSE

EXHIBITION & OPEN STUDIO . VENUE 138
26 27 28 May . 1 2 3 . 8 9 10 June
10am - 5pm and by appointment
22 Saxonhurst Road . Bournemouth . Dorset BH10 6JH
www.felicityhouse.eu

DORSET ART WEEKS 2018

JEM MAIN. Sharing the space are pastels by ZOE MAIN plus ALI HERBERT's pots, which have a stillness at their core, gifted by her contemplative making process.

Characteristically vibrant colour and predominantly abstract work by MARTYN BREWSTER, BRIAN BISHOP and URSULA LEACH are on show as part of the GROUP 7 exhibition at the Slade Centre in Gillingham (Venue 61).

The Art Stable (Venue 80) in Child Okeford is concentrating on figurative painting with work by the locally based AMANDA VESEY and GEORGE YOUNG, lovely fluid watercolours by MICHAEL CULLIMORE and new to the gallery, WILLIAM WRIGHT's beautifully understated poetic paintings. There is more poetry in MARK MEGILLY's evocative painterly photographs (Venue 204) in which he explores the mysterious and candle lit worlds of Vanitas and memento mori from 17th century Dutch painting.

Further east, wander around the lovely Walled Garden at Moreton (Venue 170), a perfect location to showcase large sculpture, and discover works by JOHN MAIN, IAN MIDDLETON, BEN RUSSELL and DAVID WORTHINGTON. There is more sculpture in Weymouth and Dorchester. Winner of the Dorchester Arts Open 2017 sculptor CHRIS DUNSEATH is showing drawings and three-dimensional work in a range of materials at The Gallery at Dukes (Venue 205) and CAROLINE SHARP (Venue 223) continues her love affair with the landscape. Embracing the materials that she finds, (woven birch and willow) and constructing hand built clay forms, she pursues her personal history in her walks and in her memories.

These wonderful artists and many others are so generous in the way that they share their thoughts and ideas and I have only scratched the surface of what is on show. Dorset famously has no motorways so distance is measured in time. My suggestions are pointers, starting places from which to meander thoughtfully through Dorset Art Weeks 2018.

Fiona Robinson

www.dorsetartweeks.co.uk



SIMON QUADRAT (VENUE 246)



CHRIS DUNSEATH (VENUE 205)



CAROLINE SHARP (VENUE 223)



**Chaldon
Studios**

Venue 169

Prints, paintings, ceramics
and other recent work from Colin Moore
and Jazmin Velasco.



Birchwood, Chaldon Herring, Dorset DT2 8DN t. 01305 851775.

We are open throughout the Dorset Art Weeks every day from 10 am - 5 pm, except Tuesdays.

DORSET ART WEEKS 2018

EVENTS

WEST DORSET POTTERY TEA PARTY

26 May

VENUE 307: North Eggardon Farm, POWERSTOCK, DT6 3ST. 4 - 8pm. Free entry. 07746 941654 / www.westdorsetpottery.com

HAYDON CHURCH ARTIST TALK

26 May

VENUE 28: Haydon Church, HAYDON, near Sherborne, DT9 5JB. 6 - 8pm. www.denmangould.com/other-side/ "In conversation plus Q&A with artists Paul Newman, Russell Denman and Eleanor Goulding."



MAKE A SEAT IN THORNCOMBE WOOD

26 May and 2 June

Hardy's Birthplace Visitor Centre, HIGHER BOCKHAMPTON, DT2 8QH. 10am - 4pm. Bookings: 01305 251228. "Using greenwood techniques and material from Thorncombe Wood you will be working through selection, cleaving, shaping, carving, sawing and drilling to make a stool."

EELES POTTERY TOURS AND FIRINGS

26 May - 10 June

VENUE 291: Eeles Family Pottery, MOSTERTON, near Beaminster, DT8 3HN. Firings 11am, 12noon, 1pm, 2pm, 3pm and 4pm, tours between firings. 01308 868257 / www.eelespottery.co.uk. "Feel the excitement of red hot raku pots lifted from the kiln and placed onto sawdust that instantaneously combusts into an inferno of flames."

CARVING WORKSHOPS

26 May - 10 June

VENUE 183: Moignes Court, OWMERMOIGNE, near Dorchester, DT2 8HY. 11am - 3pm (Closed 29 and 30 May, 4 - 7 June). Free entry. 07894 959698 / 07814 659143. "Neither Art will be demonstrating carving, using chainsaws and traditional tools. Creating complete sculptures as well as working on larger pieces."



AI WEI WEI: HUMAN FLOW

"Human Flow, an epic film journey led by the internationally renowned artist Ai Weiwei, gives a powerful visual expression to this massive human migration. The documentary elucidates both the staggering scale of the refugee crisis and its profoundly personal human impact."

9 June

VENUE 28: Haydon Church, HAYDON, near Sherborne, DT9 5JB. 7.30pm. Tickets £7 (also available on the door - please contact in advance to check availability). www.denmangould.com/other-side/



LYME IN DARK GLASS

"Work with artist Jenny Mellings to paint using natural pigments and try the 18th Century Claude Glass as a way of capturing the landscape. All ages and abilities welcome. Minimum age 8, all materials provided. Do wear good walking shoes, dress for all weathers, and bring lunch. A camping seat may also be useful if you have one. In the case of severe wind and rain, the entire workshop will take place in the museum."

26 May

The Lyme Regis Museum, LYME REGIS, DT7 3QA. 11am - 4pm. £8. Booking: 01404 45006 (Thelma Hulbert Gallery).

FAMILY WORKSHOP

31 May

VENUE 170: The Walled Garden, Station Road, MORETON, Dorchester, DT2 8RH. 10.30am - 12.30pm. £10 per family (up to 4 people). Booking recommended: www.walledgardenmoreton.co.uk "Make an illuminated sculpture from willow and paper. Wear old clothes."

FAMILY LIFE DRAWING CLASS

2 June

VENUE 183: Moignes Court, OWMERMOIGNE, near Dorchester, DT2 8HY. 2 - 4 pm. Free entry. 07894 959698 / 07814 659143. "Free family life drawing class, suitable for ages 4 to 104, for beginners, professionals and everyone in between. Materials provided, just bring a sketchbook or some paper."

OTHONA ARTISTS TALK

5 June

VENUE 245: Othona Community, Coast Road, near BURTON BRADSTOCK, DT6 4RN. 7.30 for 8pm start. Drinks available. Donations welcome. "Talk by the exhibiting artists Emma C Tabor, Robin Shaw, Ali Tebbs, Mart Tebbs and Elizabeth Sayers."

AMANDA WALLWORK: 'MAPPING THE SOUTH DORSET RIDGEWAY'

EXHIBITION: 7 - 9 June

ARTIST TALK: 7 June

Top Floor Studio, The Old Timberyard, West Bay Road, West Bay, DT6 4EL. Exhibition: 11am - 5pm. Talk: 6.30pm, free but booking essential. Details: james.sharpe@dorsetcc.gov.uk / www.southdorsetridgeway.org.uk / www.amandawallwork.com. "Exhibition showing work inspired by the geology and archaeology of the South Dorset Ridgeway including the originals of a series of commissioned maps exploring the rich landscape heritage of this area. For the talk Amanda will discuss her work for the project - joined by James Sharpe, Manager of the South Dorset Ridgeway Landscape Partnership. Come and find out about the making of the maps and this enigmatic landscape."

FARRS OPEN DAY

10 June

Farrs, Whitcombe Road, BEAMINSTER, DT8 3NB. 10.30am - 4.30pm. Entry £5, children free. In aid of Dorset Visual Arts Charity. "International furniture maker John Makepeace and horticulturalist Jenny Makepeace invite you to their inspirational historic house and garden."



The Bowridge Gallery

As well as our usual eclectic mix of art, furniture, glass, metal and woodwork we're also excited to be holding an exhibition of new work by Fernando Velazquez called 'Animas'

Unit 3, Bowridge Hill Farm, Gillingham, Dorset, SP8 5QS

Opening times 10.30am - 4.30pm, 26 May to 10 June

Tel: Jane or Nigel on 07590 599641

Email: thebowridgegallery@hotmail.com

www.thebowridgegallery.co.uk



VENUE 264

Billie Willcocks

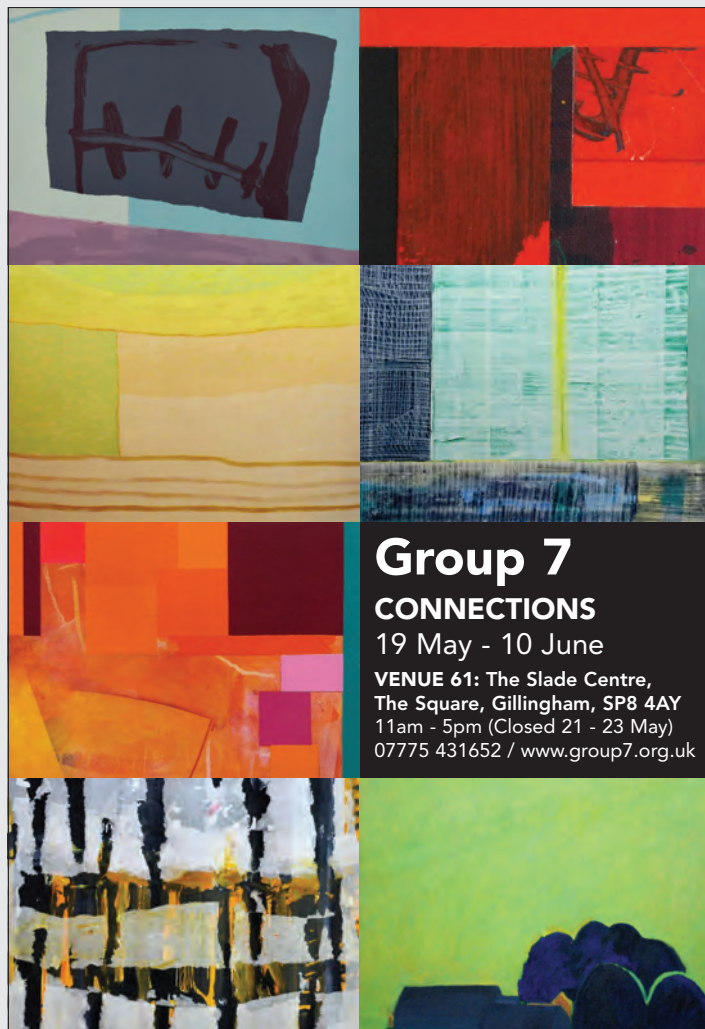
Paintings in various media with emphasis on colour, texture and form. Cards and prints for sale. Refreshments available.

Lovely garden for picnics. Children and dogs welcome.

Coltswood, Bright Hay Lane, North Chideock, DT6 6JZ

10am - 5pm

01297 489827 / billie@billiewillcocks.co.uk



Group 7 CONNECTIONS

19 May - 10 June

**VENUE 61: The Slade Centre,
The Square, Gillingham, SP8 4AY**
11am - 5pm (Closed 21 - 23 May)
07775 431652 / www.group7.org.uk



VENUE 280

Greta Berlin

LAND SCULPTURE AND STUDIO WORK

Dodpen Cottage, Fishpond, DT6 6NW

12am - 5pm

01297 678462 / gretaberlin@aol.com / www.gretaberlinsculpture.com



VENUE 273

Zee Jones

PAINTINGS

15b, Broad Street, Lyme Regis, DT7 3QE

11am - 5pm (Closed Tuesdays)

07526 505559 / zeejones@btinternet.com

www.zeejones.co.uk



the Gallery at 41

specialising in the work of Dorset artists



Richard Price ROI

Festival Exhibition - 'Life in Motion'

every day except Tues, 26 May to 10 June, 10 to 5

See website for opening hours for rest of the year.

41 East Street, Corfe Castle, BH20 5EE T: 01929 480095

www.galleryat41.com contact@galleryat41.com

Venue 208

Caz Scott Art

Caz shows her enthusiasm for oils in her land and seascapes.

With her fascination for form and texture, she builds a depth of colour to capture the essence of place.



2 Prince's Mews East, Dorchester DT1 1UL
caz-scott.co.uk

07911 611964
cazscott.art@gmail.com



Anne-Louise Bellis

Venue 32 • The Old Cow Shed Studio
Manor Farm, Glanvilles Wootton
DT9 5PZ

26 May–10 June • 10am–4pm
07970 797 748

www.theoldcowshedstudio.co.uk

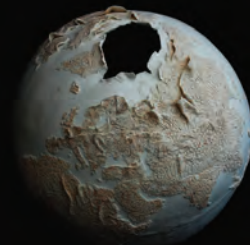
VENUE 281

Marilyn Rose

SCULPTURE IN CERAMIC AND
MIXED MEDIA

Poppes Lawn, Holditch,
Dorset TA20 4NL

11am - 5pm



Rita Brown

GRITTY. CONTEMPORARY. ABSTRACT.

Tactile, abstract paintings created from observation, drawing on the experience of walking the Dorset landscape and coastline.

Venue 1: West Lodge, Southover, Frampton, DT2 9NH
07974 216417

Open 11am - 1pm and 2 - 5pm
Closed: 29 and 30 May, 4 and 5 June

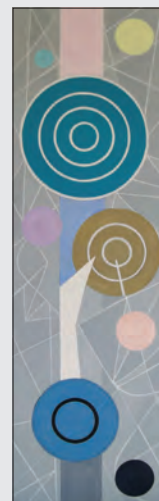


VENUE 267

Barbara Green

Manscombe Abbey,
Taylors Lane, Morcombelake,
DT6 6ED

Colourful lively oil paintings,
collagraphs and etchings
Open 10am - 6pm



Emily Julia Morgan

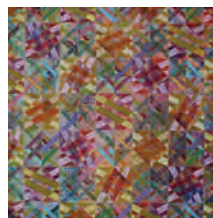
Screenprints
and abstract
painting

VENUE 197

14 Vespasian Way
Dorchester
DT1 2RD

Open 10am - 4pm
except Tuesdays

www.emilyjuliamorgan.co.uk



Jane Hedges Paintings

Dorset Art Weeks Venue 278

26th May to 10th June

LITTLE GOYLE STUDIOS

Monkton Wyld, Bridport, Dorset DT6 6DA
Open Sunday and Monday 1 - 6pm, Tuesday, Wednesday,
Thursday and Saturday 11am - 6.30pm (Closed Fridays)
01297 560488 / www.janehedges-paintings



VENUE 213

Jennifer Hunt's newly published sketchbook, *A Year on Chesil Beach*, will be available alongside her driftwood art, botanical illustrations, linocuts, handmade books and collages.

In the lovely grounds of The Old Manor, Stratton, near Dorchester, the theme is the diversity of the 'Nature Table' where artwork inspired by curios and found objects are set out in the style of a Victorian collector's cabinet.



PREVIEW

Saturday 26th May
6pm to 8pm
Wine and Nibbles

DORSET ART WEEKS 2018



ANDREA JENKINS (VENUE 69)



HEATHER MACGREGOR (VENUE 101)



CATHY VEALE (VENUE 149)



ZEE JONES (VENUE 273)



Jan Walker

New paintings inspired by the Jurassic coast

David Walker

Raku-fired ceramics

19 May to 29 June 2018



GALLERY ON THE SQUARE
Poundbury, Dorchester DT1 3BL
9.30am - 5pm (closed Sundays)
01305 213322
www.gallerypoundbury.co.uk



DORSET ART WEEKS



26 MAY – 10 JUNE 2018

NORTH WEST 1 - 35

NORTH EAST 36 - 103

EAST 104 - 147

PURBECK 148 - 171

SOUTH 172 - 238

WEST 239 - 313

PRODUCED BY **DORSET VISUAL ARTS**

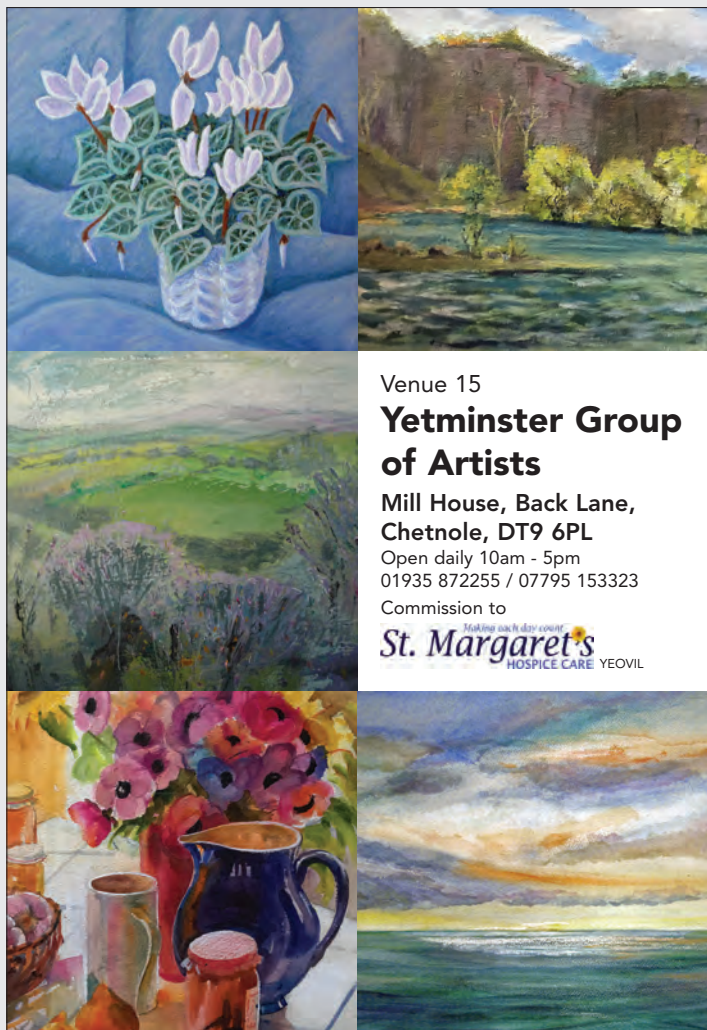


HEADLINE SPONSORS

Wyke
DORSET COTTAGES



HALL & WOODHOUSE



Venue 15
Yetminster Group of Artists
 Mill House, Back Lane,
 Chetnole, DT9 6PL
 Open daily 10am - 5pm
 01935 872255 / 07795 153323
 Commission to
Making each day count
St. Margaret's
 HOSPICE CARE YEOVIL



Zara McQueen
 Venue 65: 31 St James Street, Shaftesbury, SP7 8HF, 10am - 5pm
 07749 048295 / mchash62@hotmail.com / www.zara-mcqueen.co.uk
 Apple blossom time - collage / mixed media, 120 x 150 cm



Andrea Jenkins
 Venue 69: Shaftesbury (North East)



RETROSPECTIVE EXHIBITION
Jon Ellis 1939-2017
 SCULPTURE AND PAINTINGS
 A chance to see Jon's amazing work created during his imaginative and prolific life at this retrospective exhibition and sale.
 Jon's large pieces of sculpture will be in our lovely garden, with small sculptures and colourful paintings in the studio.
VENUE 49
 12noon - 6pm / 01258 817656



PHOEBE THOMASSON
 www.ptartworks.com



Caro Lester Lauren Mae Millinery
IN THE GARDEN
 print feather stitch draw
 Venue 233
 St George's Centre Reforne Portland DT5 2AN
 St George's Studio



VENUE 124
Dick Hewitson
 PAINTINGS IN OILS
 Oakley Lodge, 31 Brook Lane, Corfe Mullen, Wimborne, BH21 3RD
 10am - 4.30pm (31 May 10am - 8pm) / Closed Wednesdays
 01202 693400 / 07545 396549 / www.dickhewitson.co.uk

DEBBIE LEE

In Debbie Lee's conventional family kitchen there is a door that opens onto a different world. Three deep steps down and you enter an Aladdin's cave. Paintings stacked two three four deep against the walls in which figures float, are constricted or restrained, or vie with each other for power. This is the stuff of dreams or maybe nightmares with a liberal sprinkling of fairy tale references, folk and outsider art. The roots of Lee's current concerns go back a long way and continue to underpin her iconography.

Whilst studying painting at Glasgow School of Art in the eighties she came across the Chicago Imagists group of painters and was inspired to find out more about Henry Darger an 'outsider' artist who lived in Chicago. In pursuit of these interests she headed to Chicago Art Institute, where 'The Hairy Who', a group of Imagist painters, were located. As complementary studies to her painting studio practice she looked into animation and printmaking classes and although both disciplines remain in her arsenal of skills, printmaking has remained centre stage. After Chicago she spent two productive years studying for an MA in painting at the Royal College of Art and again it was the folk outsider art angle that interested her.

Studies over, she set off again, first Cyprus then India on a year long residency funded by a Commonwealth Scholarship. She learned scroll painting near Calcutta, fascinated by the story telling of the scrolls as they gradually unrolled to reveal the narrative. In Midnapore she stayed with a group of nomadic painters, who used plant pigments mixed with gum Arabic to make their paints. She tried glass painting in Tanjore, paper-making in Gujarat and finally set up a studio in Baroda, meeting Indian contemporary artists and becoming increasingly mesmerized by Indian miniature painting. She has a treasured catalogue in her studio of Howard Hodgkin's collection of Indian paintings and has theories about how small details from them may have been unconsciously translated into his paintings.



'LEVITATION' (Acrylic on canvas, 91 x 122 cm)

Miniatures are a significant aspect of Lee's practice. The title of her small artist's book, *Tread Softly, A Silent Narrative*, quotes just two words from Yeats' wonderful poem, "Tread softly because you tread on my dreams". Yet it echoes Yeats' sentiments, encapsulating the fragility of the hopes and fears of the human condition. It consists of text interspersed with tiny solar etchings, an eco-friendly method of etching that uses light rather than acid to bite the plate.

The ideas contained in her work are often explored in these miniature prints before she carries them forward into paint. In fact they are her equivalent of an artist's sketchbook.

The etchings in *Tread Softly...* are typical of Lee's work: edgy narratives questioning relationships, dipping into magic, hypnotism, Magic Realism and surrealism – the Leonora Carrington sort of surrealism not the macho, Daliesque male-centric type. Her line owes something to the often child-like characteristics of outsider art, a naivety that she cultivates deliberately.

It is not only outsider art and surrealism that have influenced her. Her experience of different cultures has been hugely influential. She also cites the impact of Paula Rego on her work and acknowledges that she has been an equally important figure for many contemporary artists, particularly women. It is the storytelling aspect of Rego's work that resonates with Lee. The oral tradition of passing narratives from generation to generation has been particularly strong in rural communities in the past. Lee identifies with this tradition through the close bond she had with her Irish grandmother whose treasured gift for story-telling she has inherited, translating it from the oral to the visual and the written. Her recounting of her grandmother's histories has encouraged her to pursue the threads of her personal history in her own work thus continuing that tradition.

Her recent painting explores mind-control, addressing issues of who is in control in male female dynamics and sexual politics. *Hypnotist* is a self-evident exploration of this idea with a seated woman being hypnotised by a male figure. In other work the balance of power is reversed with women in control. The autobiographical elements relate to her experiences of motherhood and her training as an art therapist. The importance of her family underpins everything that she does. Her young daughter frequently appears as subject and muse and her delightfully naughty black kitten stands in for an iconic witch's familiar.

Fiona Robinson



Portrait photography by Paul Jefferis



'HYPNOTIST' (Oil on canvas, 90 x 90 cm)

VENUE 131: Poole Printmakers, Ground Floor, 5 Bowling Green Alley, POOLE, BH15 1AG. Thursday - Tuesday 11am - 5pm. www.poole-printmakers.org.uk.

www.debbieleeart.co.uk

DORSET ART WEEKS 2018



ANNE-LOUISE BELLIS (VENUE 32)



ELAINE COLLETT (VENUE 55)



IMOGEN BITTNER (VENUE 53)



KEVIN O'BRIEN (VENUE 26)



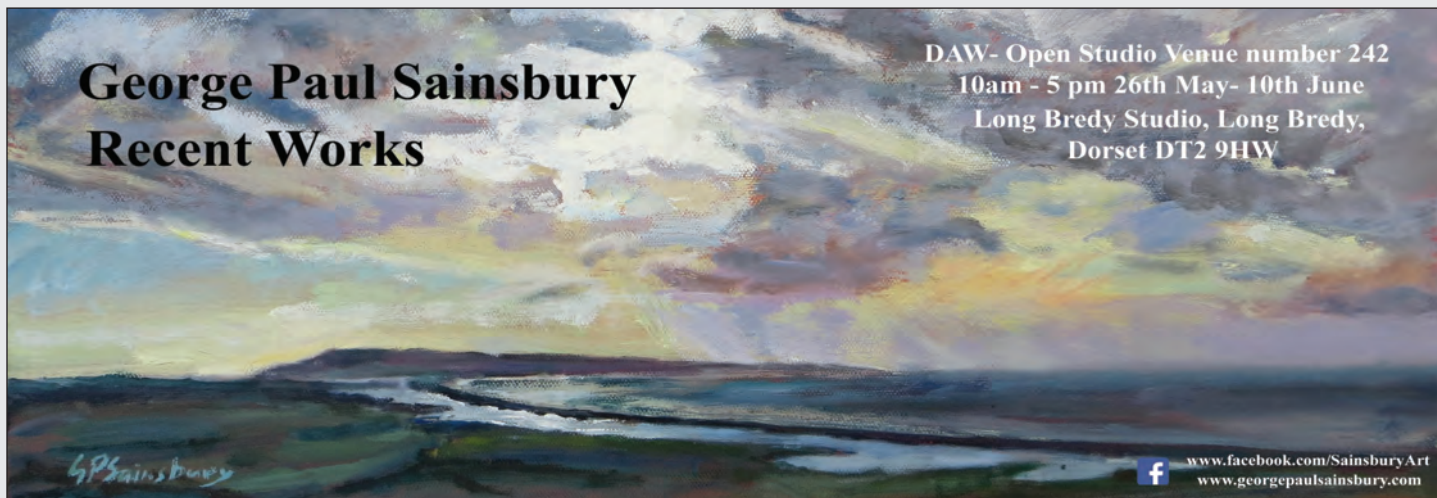
JANE CHAPMAN (VENUE 36)



BJÖRK HARALDSDÓTTIR (VENUE 282)



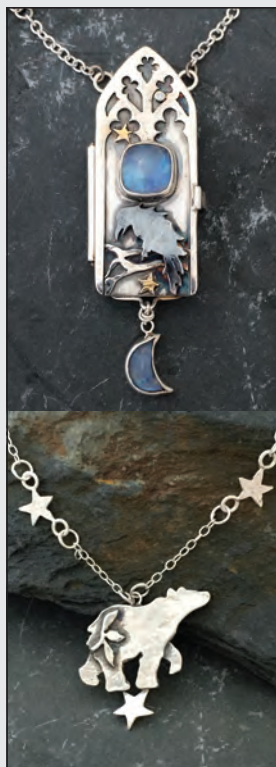
COLIN MOORE (VENUE 169)



George Paul Sainsbury
Recent Works

DAW- Open Studio Venue number 242
10am - 5 pm 26th May- 10th June
Long Bredy Studio, Long Bredy,
Dorset DT2 9HW

www.facebook.com/SainsburyArt
www.georgepaulsainsbury.com



A Wolf and I Jewellery Open Studio

Magical mermaids, seahorses and unicorns, bears, wolves, magpies and mountains.

Enchanting jewellery from the wild world of A Wolf and I.

9th and 10th June

10am - 4pm

Also joining us are special guests :



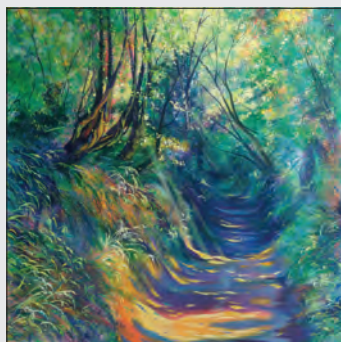
Silver B Jewellery
Heidi Gem Jewellery
Beasts from the Bench Jewellery
Eirllys & May Illustration
Lorraine Bowley Mixed media art
Gitta Dickson Acrylic

FLUX 'N' FLAME JEWELLERY SCHOOL

Milton Abbas, Dorset DT11 0BD

07785 550771 / howl@awolfandi.com

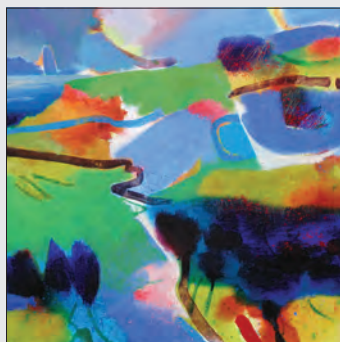
www.awolfandi.com



Venue 20

Carolyn Brettell

Large contemporary landscapes, wildlife and cityscapes in vibrant acrylics



VENUE 298

Gerry Dudgeon

Walnut Farm, Melplash, DT6 3UG

10am - 5pm

www.gerrydudgeon.com

VENUE 282

Björk Haraldsdóttir

2017 MARSHWOOD ARTS PRIZE WINNER

Higher Holditch Farm, Holditch Lane,
Holditch, Dorset TA20 4NL

07884 390205 / justbjork@me.com

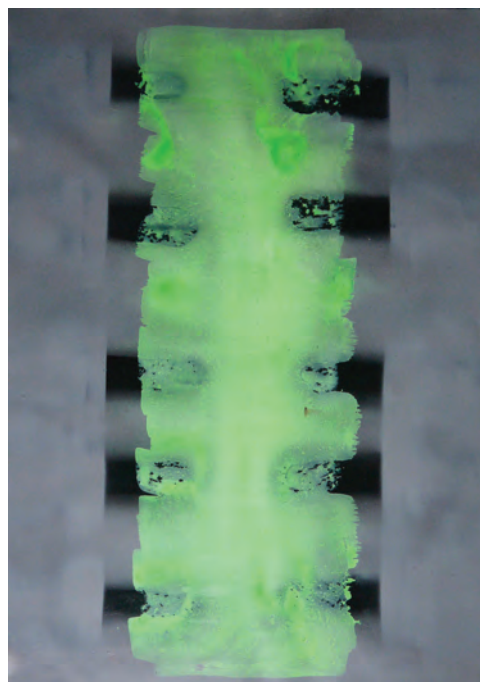


artists in collaboration

Bridport artists **Chris Neaves** and **Sue Barnes** work from neighbouring studios which makes Gundry Lane an ideal town centre destination during Dorset Art Weeks.

Also, as two of The Dorset Five, Chris and Sue will be exhibiting at Eype Centre for the Arts from Saturday June 16th to Sunday June 24th.

Come and meet the five artists on Sunday June 17th from 2-4.30



VENUE 33

Robert Woolner

NEW WORK NEW STUDIO

Robert has recently moved from Vanners Studio and has built a new studio designed in collaboration with YOU&ME architecture, providing an exciting new gallery space for his work.

Chantry Cottage, Glanvilles Wootton, DT9 5QJ

01963 210313 / 07837 719511 / robwoolner@mac.com
robwoolner.com



Venue 206

Elli

PAINTING

Acrylic paintings of wildlife and contemporary art inspired by early years living in Singapore and the Far East and later on a farm in Devon.

Elli now lives and works in beautiful Dorchester.

Aspects Gallery, 3 The Mews, Durngate Street, Dorchester, DT1 1JP

9.30am - 5pm (Saturdays 9.30am - 1pm)

Closed Sundays and Bank Holiday Monday

01305 457990

ritaelizabeth@btinternet.com



'I visit many exhibitions - this one has touched me the most'

Hawkombe, Hawkombe Lane, Compton Abbas, SP7 0JH
01747 812610 / 07711 528234

art@phylliswolff.co.uk • www.phylliswolff.co.uk

11 - 5 (Sundays 12 - 4pm, Friday 1 June 11 - 8pm)
and other times by appointment

| | | | | | | | | | | | | | | | |
|----|----|----|---|---|----|---|---|---|---|---|---|---|---|---|----|
| S | S | M | T | W | T | F | S | S | M | T | W | T | F | S | S |
| 26 | 27 | 28 | X | X | 31 | 1 | 2 | 3 | X | X | 6 | 7 | 8 | 9 | 10 |

VENUE 235

REFLECTED LIGHT

An Exhibition of textural encaustic beeswax paintings by Portland artist

LYN KIRKLAND

Hayloft Cafe, Pennsylvania Road, Portland DT5 1HU

01305 820918

Open 10 - 4pm Daily

Demonstrations on 26, 27 May & 1, 2, 3, 8, 10 June at her studio close by. Call for details 07818 257665

www.lynkirklandart.artweb.com

Stephen Bishop

Contemporary oil paintings

Dorset Art Weeks Venue 261


www.stephenbishop.co.uk

07981 685704

stephen@stephenbishop.co.uk

Emotionally charged paintings by a professional artist






dansen

Contemporary Interiors in Wood

5 rooms full of unique wood work from over 200 craftsmen working in the UK. Ranging from kitchenware to one-off jewellery boxes and furniture. Coffee shop and car park.

Showcasing a separate exhibition in Dorset Art Weeks, including featured artists Selwyn Holmes and Tilia Holmes.

26th May - 10th June - **Venue 240**



Rodden Row, Abbotsbury, DT3 4JL
www.danselgallery.co.uk

01305 871515
Open 10am - 5.30pm every day

DORSET ART WEEKS 2018



GRETA BERLIN (VENUE 280)



VICTORIA JARDINE (VENUE 30)



CAROLINE SHARP (VENUE 223)



MICHELLE GRIFFITHS (VENUE 61)



KUHLA SHINE (VENUE 9)



ANNE-LOUISE BELLIS (VENUE 32)



TIM BOOTH (VENUE 292)

BROCHURE COVER COMPETITION

The DORSET ART WEEKS BROCHURE COVER COMPETITION was open to all artists, designers and makers taking part in this year's event. A panel which included the brochure designer, Dorset Visual Arts staff and board selected the cover and a shortlist of runners up.

These images are being used to promote the event across print and social media, and as a series of collectable postcards available at each of the selected artists' venues.

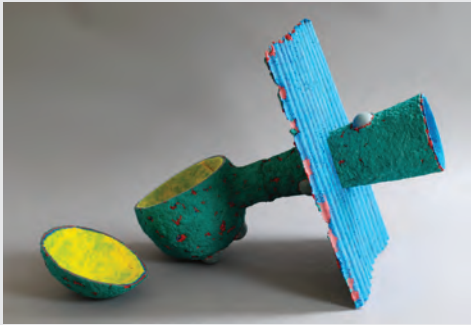
Tim Booth was this year's winner with his photograph *Runaway Cyr Wheel*.



ALICE BLOGG (VENUE 306)



RUSSELL DENMAN (VENUE 28)



CHRIS DUNSEATH (VENUE 205)



BILLA EDWARDS

DAW venue 157
Oils, watercolours, sketch books and cards. Also work by **John Bowen** and **Clare Western**.
At a historic location,
St John's Chapel, Creech Grange, Wareham, BH20 5DF
Open daily 10.30am - 4pm



Imogen Bittner Studio

Stitched, printed and painted fabric and paper still lifes and landscapes
Venue 53: The Old Forge, The Bridge, Sturminster Newton, DT10 2BS
Open daily 10.30am - 5pm or by appointment
Between Broad Oak (Bull Inn) and Sturminster Bridge. Parking in small public car park by river and opposite the Bull or limited space at venue. Ground floor access. Not suitable for wheelchairs.

DORSET ART WEEKS 2018



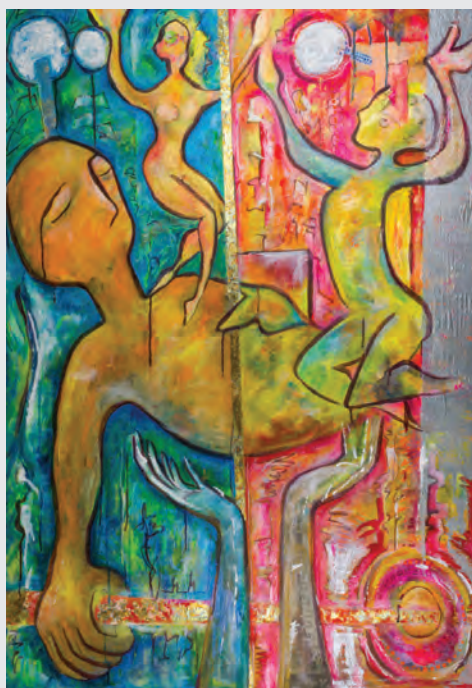
CAROLYN BRETTELL (VENUE 20)



FELICITY HOUSE (VENUES 138 + 159)



LORRAINE BOWLEY (VENUE 204)



PHOEBE THOMASSON (VENUE 190)



JAZMIN VELASCO (VENUE 169)



CAROLINE LIDDINGTON

Colourful, semi abstract oil paintings inspired by coastal landscapes and interiors

Venue 244: Stone Cottage, Greenhayes, Shipton Gorge, Bridport, DT6 4LU • www.carolineliddingtonart.com • 07958 756368

WESCA at Vida Comida Dorset Art Weeks 2018



An exciting and vibrant exhibition of paintings, ceramics, photographs and sculpture

Upstairs at
Vida Comida Tapas Bar
Swan Yard, Sherborne
Open Daily 11am - 5pm

a WESCA exhibition
Image: Kevin O'Brien

Private View: Saturday 26th May, 3 - 5pm
Meet The Artists: Saturday 2nd June, from 2pm



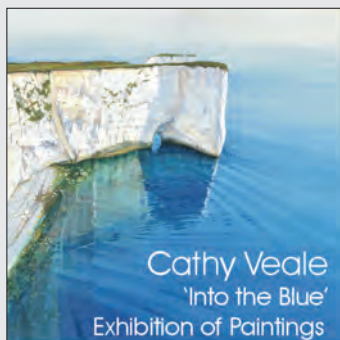
VENUE 58

Katie Scorgie

Equestrian and some
African Wildlife

Vibrant monochromatic and
coloured oils and drawings

Open daily 11am - 3pm
Fridays until 7pm
www.katiescorgie.co.uk



Cathy Veale
'Into the Blue'
Exhibition of Paintings

Catholic Hall
Rempstone Road Swanage
26th May - 2nd June
Open 10am-5pm
www.cathyveale.co.uk

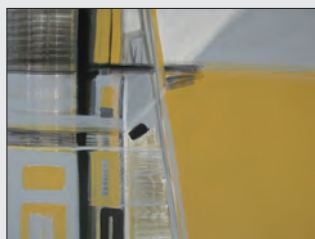


Venue 275

Jools Woodhouse Paintings & Prints

Rocombe Farmhouse
Springhead Road, Rocombe
Lyme Regis DT7 3RR
01297 444913

www.joolswoodhouse.com



ELAINE COLLETT VENUE 55

CELEBRATING COLOUR

joyful exuberance - reflective layers - abstract
painting - contemporary still life and flower
painting - assemblage - print

10 Fiddleford, Sturminster Newton, DT10 2BX
01258 472844 / 07787 522597
emcollett@hotmail.com www.dorsetshire.com/emc
11am - 5pm or by appointment
Closed 30th, 1st, 2nd, 6th



Venue 209

Grahame R Preece

WILDLIFE, LANDSCAPE, PORTRAIT ARTIST

Paintings of local scenes and wildlife around Dorchester area.
Paintings from £50 - £500. Commissions welcomed.

Large selection of original greetings cards from my paintings
available. I have sold in Spain, France, Germany.

I look forward to meeting you.

45 Colliton Street, Dorchester, DT1 1XH

10am - 4pm

01305 261256 / 07821 383782 / jackpreece128@hotmail.com
www.grahamepreece.co.uk



Moira Purver

FIGURATIVE SCULPTURE

Open Studio

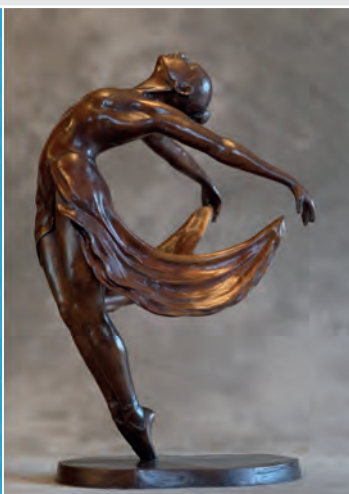
26th May to 10th June

Steppes Hill House,
Coombe Hill,
Langton Matravers
BH19 3EU

Open 10am - 5pm Daily

Venue number DAW 151

www.moirapurversculpture.co.uk



Venue 36

Artists and Makers @ Hunter's Moon

Jane Chapman: Children's book illustration, original prints

Martin Dickson: Ceramics

Colin Robert Davis: Ceramic mosaics

Liz Walsh: Willow sculpture

Tim Warnes: Children's book illustration, sculpture

Hunter's Moon, Streetway Lane, Cheselbourne, DT2 7NT

11am - 5pm (Closed 4 and 5 June)

01258 837256 / 07907 911426 / www.chapmanandwarnes.com

Chris Dunseath

DorchesterARTS Open Prizewinner's Solo Exhibition

23 MAY - 8 JUNE
Mon - Fri 9am - 5.30pm
Sat 2 June only
10am - 3pm
Closed Mon 28 May



Duke's
AUCTIONEERS SINCE 1823

The Gallery at Duke's, Duke's Auctioneers,
Brewery Square, Dorchester DT1 1GA



Kim Pragnell

ONE OF DORSET'S LEADING SEASCAPE PAINTERS

With a lifetime of both painting and being on the sea, Kim has created a significant collection of paintings in oil, acrylic and watercolour.

Visit him at DAW Venue 74:

Coles Cottage, Shute lane, Iwerne Minster, DT11 8LZ
or on his web page:

kim-pragnell-theseascapepainter.co.uk

Work also at Tincton Gallery, Dorchester, Yetminster Old School Gallery and First-View Gallery, Stourhead (after 6th June)



Catherine Pitchford



Debbie Lee



Jane O'Connor



Dave Moylan



Daniel Grant

Poole Printmakers are a co-operative of printmakers, both fine artists and those learning their craft, exhibiting a wide range of traditional print styles and contemporary work - the setting, an atmospheric working studio in Old Poole.

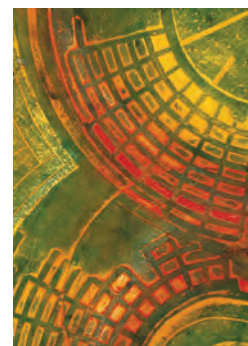
Venue 131

POOLE PRINTMAKERS
5 BOWLING GREEN ALLEY - POOLE - DORSET

Ground Floor, 5 Bowling Green Alley, Poole, BH15 1AG

11am - 5pm (Closed Wednesdays)

Come and meet members demonstrating workshop equipment and different printing techniques. Learn about the wide range of courses available, and the steadily building community of local artists this co-operative supports.



Jenny Surridge



Izzy Devall



Buzz Burry



Kirstie MacLean



John Welsh

www.poole-printmakers.org.uk

WESSEX FESTIVALS 2018

FROME FESTIVAL

6 - 15 July

Various venues throughout FROME, Somerset. www.fromefestival.co.uk / 01373 453889. "Frome's impressive and entertaining arts festival features an eclectic mix of opera, pop, choral, jazz and folk music, theatre, workshops, exhibitions, films, walks and talks. Line-up includes Badly Drawn Boy, John Cooper Clarke, Aston Merrygold, Blazin' Fiddles, Clare Hammond, Professor Michael Wood, London Gala Orchestra, Tom Allen, Viv Groskop."

SUNSET RIDGE

8 July

Prince of Wales, HAM HILL, near Yeovil, Somerset, TA14 6RW. 1 - 8pm. Free entry. "The Electric Broom Cupboard's annual festival of original music. Line-up includes The Billy Shinbone Show, Gris de Lin, Design, Pop Parker, The Levels, Dub Liberators."

ONCE UPON A TIME IN THE WEST

13 - 15 July

Deepest WILTSHIRE (near Trowbridge and Westbury).

www.outwestfestival.co.uk. "Good value, small scale, big fun. Line-up includes Ferocious Dog, Los Albertos, Smerin's Anti-Social Club, Gaz Brookfield, Showhawk Duo."

BUDLEIGH MUSIC FESTIVAL

13 - 21 July

BUDLEIGH SALTERTON, Devon. www.budleighmusicfestival.co.uk. "Classical music on the Jurassic coast."

BROADCIDER FESTIVAL II

14 July

Broadway & Horton Cricket Club, Pound Road, BROADWAY, near Ilminster, Somerset, TA19 9JX. 12noon - 11pm. www.fuelledbycider.com. "One day cider and music festival. Headliners Black Water County are joined by an eclectic range of local and national acts."

RIVER TOWN

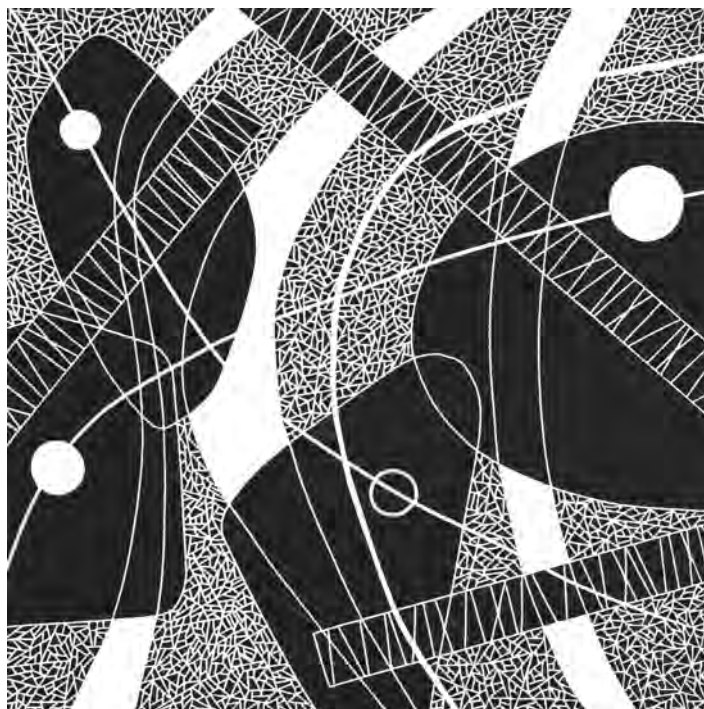
19 July - 5 August

Colston Hall and St George's, BRISTOL. www.colstonhall.org. "Two weeks of superb Americana music. Line-up includes The Barr Brothers, Jess and the Bandits, The Grahams, Emily Barker, Graham Nash, Rosanne Cash."

CHAGSTOCK FESTIVAL

20 and 21 July

Whiddon Down, near CHAGFORD, Devon. www.chagstock.info. "Line-up includes Imelda May, Buzzcocks, Show of Hands, The Correspondents, King King, Hunter & The Bear, The Luck."



EMMA TUCK

FROME OPEN STUDIOS

"Artists and makers open their studio and workshop doors for this much loved event during Frome Festival. It is a perfect opportunity to meet the artists in a relaxed setting and buy directly from them. This event supports the work of local artisans who add to the independent and vibrant community in Frome. There is a wealth of talent in this lovely market town and something on the art trail to suit all tastes and budgets. Taking part this year we have painters, printers, ceramicists, jewellers, sculptors, fashion and textile designers, illustrators, photographers, glass artists and wood workers."

7 - 15 July: Various venues in FROME, Somerset.

www.fromeopenstudios.co.uk.

LARMER TREE FESTIVAL

20 - 22 July

Larmer Tree Gardens, TOLLARD ROYAL, Dorset, SP5 5PY. www.larmertreefestival.co.uk. "Five-day music and arts festival. Line-up includes First Aid Kit, Jake Bugg, Public Service Broadcasting, Tune-Yards, Nick Mulvey, Goat Girl, Let's Eat Grandma, Lankum, Sara Pascoe, Same Difference."

BRISTOL HARBOUR FESTIVAL

20 - 22 July

Harbourside, BRISTOL. Free entry. www.bristolharbourfestival.co.uk.

TROWBRIDGE FESTIVAL

20 - 22 July

Stowford Manor Farm, WINGFIELD, near Trowbridge, BA14 9LH. www.trowbridgefestival.co.uk. "Line-up includes Beans On Toast, Ben Waters, Moscow Drug Club, Blyth Power."

TOLPUDDLE MARTYRS' FESTIVAL

20 - 22 July

TOLPUDDLE, Dorset. www.tolpuddlemartyrs.org.uk. "Annual festival to commemorate the bravery of the martyrs' struggle, featuring music, speakers and family entertainment."

THE GODNEY GATHERING

21 July

Garslade Farm, GODNEY, Glastonbury, BA5 1RX. www.thegodneygathering.com.

BRIDGWATER QUAYSIDE FESTIVAL

21 July

Various locations in BRIDGWATER. 11am - 5pm. www.bridgwaterquaysidefestival.co.uk. "Bridgwater's free outdoor summer festival has a fantastic line up of live music, jazz, swing, acoustic, dance, international street theatre, circus and aerialists, family and children activities, fabulous food stalls, arts, crafts, all in the centre of the town."

WOMAD

26 - 29 July

Charlton Park, MALMESBURY, Wiltshire, SN16 9DG. www.womad.co.uk. "The original and biggest celebration of music, arts, food and dance from across the world." Line-up includes Django Django, Ken Booth, Sharon Shannon, Aeham Ahmad."

BRIDPORT FOLK FESTIVAL

27 - 29 July

Town Centre, BRIDPORT, Dorset. www.bridportfolkfestival.com.

MUDEFORD ARTS FESTIVAL

28 and 29 July

Mudford Quay Green, MUDEFORD, Christchurch, Dorset, BH23 4AB. Free entry. www.mudfordartsfestival.net. "Community festival of arts and crafts featuring the best of local work. Also a full programme of entertainment and a wide range of food."

UPFEST

28 - 30 July

Bedminster, BRISTOL. Free entry. www.upfest.co.uk. "Europe's largest live urban art festival, Upfest brings hundreds of the most cutting edge and diverse street artists into the city to paint buildings, surfaces, vehicles and canvases live in the streets."

DILLINGTON CLASSICAL GUITAR FESTIVAL

29 July - 1 August

Dillington House, ILMINSTER, Somerset, TA19 9DT. www.dillington.com / 01460 258613.

BESTIVAL

2 - 5 August

Lulworth Castle, LULWORTH, Dorset. www.bestival.net. "Line-up includes Silk City, London Grammar, M.I.A., Grace Jones, Plan B, Chaka Khan, First Aid Kit, Thundercat."

Yeovil
SUPER SATURDAY
YEovil TOWN CENTRE **22 SEPTEMBER** 9am - 4pm

BUSKFEST
CELEBRATING GARDENING
CRAFT & MARKET STALLS
BUGFEST
CHILDREN'S ACTIVITIES
AND MUCH MORE!



www.facebook.com/yeovilsupersaturday

WESSEX FESTIVALS 2018

OUTSIDER FESTIVAL

3 - 5 August

Fernhill Farm, Cheddar Road, COMPTON MARTIN, Somerset, BS40 6LD. www.outsiderfestival.com. www.sidmouthfolkweek.co.uk / 01395 577952. "Two alternating, barn-covered stages featuring original music. Tent and vehicle camping, camp fire, dressing up and happy vibes on this working farm. An 18+ event. Line-up includes Random Hand, The Scribes, Funke & The Two Tone Baby, Skimmity Hitchers, The Bar Stool Preachers."

BLACKDOWN HILLS BEER & MUSIC FESTIVAL

10 and 11 August

SMEATHARPE, Honiton, EX14 9RD. www.blackdownbeerfestival.co.uk. "A proper local festival set in the glorious Blackdown Hills."

BURTON BRADSTOCK FESTIVAL OF MUSIC AND ART

11 - 19 August

Village Hall, Church Street, BURTON BRADSTOCK, Dorset, DT6 4QS. www.burtonbradstockfestival.com.

PURBECK VALLEY FOLK FESTIVAL

16 - 19 August

Purbeck Valley Farm, CORFE CASTLE. www.purbeckvalleyfolkfestival.co.uk.

BEAUTIFUL DAYS

17 - 19 August

Escot Park, near OTTERY ST MARY, Devon. www.beautifuldays.org. "Beautiful Days is the Levellers' family music festival, featuring 7 stages, amazing site art, a huge children's area, comedy, theatre, family camping, licensed real ale bars and a great choice of food and craft stalls. Line-up includes Manic Street Preachers, Feeder, Levellers, Gogol Bordello, Suzanne Vega, Calexico, Jazzie B."

SEA CHANGE FESTIVAL

24 and 25 August

TOTNES, Devon. www.seachangefestival.co.uk. "A town festival of music, culture and high times. Line-up includes Gwenno, Hookworms, Josh T Pearson, Lost Horizons, The Weather Station."

WATCHET LIVE

24 - 26 August

WATCHET, Somerset. www.watchetfestival.co.uk. "Three live stages host more than 60 live acts, bringing a wide range of high-calibre musical acts not normally found performing in West Somerset. Line-up includes Melanie C, Cast, Aswad, Dub Pistols, Hazel O'Connor."



THE RHEINGANS SISTERS

SIDMOUTH FOLK WEEK

"A festival with a view: nestled in majestic red cliffs and green valleys, the seaside town offers a unique setting for an unmissable eight days of the very best folk music, dance and song. Join us for first class concerts, upbeat roots parties, intimate sessions, ceilidhs and folk dancing, storytelling, fun family entertainment and youth-centred sessions, hands-on workshops and spectacular dance displays, the best in South West crafts and the tastiest of local food and drink. Line-up includes Fairport Convention, Cara Dillon, Karine Polwart, Gigspanner, Faustus, Blowzabella, The Ukulele Orchestra of Great Britain, Eliza Carthy & The Wayward Band, Jackie Oates, Billy Bragg, Show Of Hands, Elephant Sessions, The Rheingans Sisters, Edgelarks, Emiy Askew, Martin Carthy & John Kirkpatrick, Steve Tilston & Jez Lowe, Elephant Sessions, Kathryn Tickell & The Darkening, False Lights, Blackbeard's Tea Party."

3 - 10 August: Venues throughout SIDMOUTH, East Devon. www.sidmouthfolkweek.co.uk / 01395 577952.

CAMPING BE CIDER SEASIDE 7

24 - 27 August

Bredy Farm, BURTON BRADSTOCK, Dorset, DT6 4ND. www.bredyfarm.bigcartel.com.

RIVER COTTAGE FESTIVAL

25 and 26 August

River Cottage HQ, Park Farm, Trinity Hill Road, MUSBURY, Axminster, EX13 8TB. www.rivercottage.net. "Music, masterclasses and festival fun!"

BROADCIDER FESTIVAL III

26 August

Broadway & Horton Cricket Club, Pound Road, BROADWAY, near Ilminster, Somerset, TA19 9JX. £15 / £5. www.fuelledbycider.com. "Relaxed and family friendly one day festival. Line-up includes Sean McGowan."

END OF THE ROAD

30 August - 2 September

Larmer Tree Gardens, TOLLARD ROYAL, Dorset, SP5 5PY. www.endoftheroadfestival.com. "Line-up includes Vampire Weekend, St Vincent, Feist, Yo La Tengo, Ezra Furman, Jeff Tweedy, John Cale, Fat White Family, Oh Sees, Gruff Rhys, Julia Holter, Ariel Pink."

LYME FOLK WEEKEND

31 August - 2 September

Various venues in LYME REGIS, Dorset. www.lymefolk.com / 01297 442138. "More than 30 acts in six venues - a whole weekend of great music and dancing on the Jurassic Coast. Line-up includes Show of Hands, Ninebarrow, Merry Hell."

ONE LOVE

31 August - 2 September

Gilcombe Farm, near BRUTON, Somerset, BA10 0QE. www.onelovefestival.co.uk. "The UK's Number 1 reggae and ska festival. A reggae world that allows you to submerge yourselves within it completely - a reality where hope and love joins everybody into a combined and unbreakable positive force - where everyone is welcome and no-one's judged - an atmosphere of acceptance where there are no borders. One people, one world."

BRIDPORT HAT FESTIVAL

1 and 2 September

BRIDPORT, Dorset. www.bridporthatfest.org. "The most creative, quirky, stylish and inventive headwear combines with live music, multiple competitions, demonstrations, talks, displays, shows, a hat auction, games, and much, much more, all 'topped' off by a mass hat-wearing photoshoot in Bucky Doo Square on 'Haturday'. And all you need is a hat!"

SWANAGE FOLK FESTIVAL

7 - 9 September

Sandpit Field, SWANAGE. www.swanagefolkfestival.com. "A welcoming, happy and inspiring place to spend not only the festival weekend but if you have the time, a relaxing and enjoyable holiday."

DEVON OPEN STUDIOS

8 - 23 September

Locations throughout DEVON. www.devonartistnetwork.co.uk. "Enjoy art at its origin."

FREE-EXPRESSION ARTS FESTIVAL

9 September

Various locations in BLANDFORD FORUM, Dorset. www.free-expression.com. "A vibrant community arts festival celebrating the diversity within the arts. Stalls, street entertainment, workshops and art exhibition. Also the proud host of The Great Dorset Art Fair."

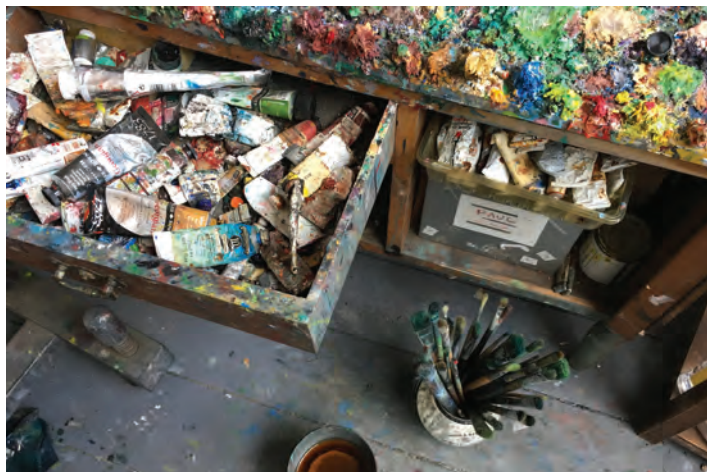
INSIDE OUT DORSET

14 - 23 September

Various locations in DORSET. www.insideoutdorset.co.uk. "Offering spectacular, open-air entertainment for all the family, Inside Out Dorset is a fantastic way to see world-class performers in some of the most beautiful and historic places the county has to offer. More information about the locations and performances will be released shortly."



WESSEX FESTIVALS 2018



SOMERSET OPEN STUDIOS

"Now the largest event in Somerset for visual artists and makers, Somerset Open Studios draws Somerset Art Weeks back to its roots, focussing on artists in their working environment. Between 15 and 30 September, artists demonstrate how they make their work: their process, practice and inspiration. The event allows a rare opportunity to go behind the scenes and see inside artists' studios, temporary working spaces and other work locations. Open Studios visitors can find out first hand about the creative process through demonstrations, workshops, talks and special events, to educate, inspire and delight."

15 - 30 September: Locations throughout SOMERSET.

www.somersetartworks.org.uk.

YEOVIL SUPER SATURDAY

22 September

Locations throughout Town Centre, YEOVIL, Somerset. 10am - 4pm. 01935 382424. "Talented musicians give up their own time to busk for a chosen charity (this year School in a Bag) throughout the town centre, providing a melodic backdrop to other activities that include children's craft workshops, market stalls, performance and dance."

SHERBORNE LITERARY FESTIVAL

10 - 14 October

Various locations in SHERBORNE, Dorset.
www.sherborneliterarysociety.com.

YEOVIL LITERARY FESTIVAL

25 - 28 October

Octagon Theatre, YEOVIL.
www.yeovil literary festival.co.uk.

PRISTON MUSIC FESTIVAL

14 - 16 September

Various locations in PRISTON, near Bath, BA2 9EE. www.priston.org.uk. "A mostly free festival set in a lovely village near Bath. A mix of high calibre bands play in intimate settings. Morris Dancing, workshops, kids' stuff, sessions and stalls. Line-up includes Reg Meuross, Sam Carter, Cardboard Fox, De Fuego, Rivers of England, Dragonsfly, Kitty Macfarlane, Solana."

BUDLEIGH SALTERTON LITERARY FESTIVAL

19 - 23 September

Locations in and around BUDLEIGH SALTERTON, Devon.
www.budlitfest.org.uk. "Budleigh Salterton Literary Festival celebrates its 10th anniversary with a brilliant line-up of thrilling, innovative writers."

ENCOUNTERS

25 - 30 September

Watershed, BRISTOL. www.encounters-festival.org.uk. "The UK's leading short film festival, bringing you the best in international short film, animation, and virtual reality."

MARLBOROUGH LITERATURE FESTIVAL

28 September - 1 October

Various locations in MARLBOROUGH, Wiltshire. www.marlbroughlitfest.org.

BOURNEMOUTH ARTS BY THE SEA FESTIVAL

29 September - 6 October

Central BOURNEMOUTH, Dorset.
www.artsbythesea.co.uk. "An inspirational, accessible and diverse annual arts festival which aims to create a stronger presence and profile of the arts in and beyond Bournemouth."

SWANAGE BLUES FESTIVAL

4 - 7 October

Locations in and around SWANAGE, Dorset. www.swanage-blues.org. "The Swanage Blues Festival brings together an amazing collection of musicians, fans and friends for a weekend of jams, open mics and headline performances."

THE TWO MOORS FESTIVAL

12 - 21 October

Locations across DARTMOOR and EXMOOR.
www.thetwomoorsfestival.co.uk / 01392 665885. "Ten days of chamber music in and around Dartmoor and Exmoor's national parks. Line-up includes Yevgeny Sudbin, Alexander Chaushian, Tamsin Whaley-Cohen, Mark Padmore and Stephan Loges, Joseph Middleton, Thomas Trotter, Alberni Quartet, Andrey Lebedev, Ashley Solomon."

WELLS FESTIVAL OF LITERATURE

19 - 27 October

Various locations in WELLS, Somerset.
www.wellsfestivalofliterature.org.uk.

BRIDPORT LITERARY FESTIVAL

4 - 11 November

Various locations in BRIDPORT, Dorset.
www.bridlit.org.

SHIINE ON WEEKENDER

16 - 19 November

Butlins, MINEHEAD.
www.shiineon.com.

SIDMOUTH FOLK WEEK 2018
3rd - 10th AUGUST

Ear to the Past - Eye on the Future

Pre-Festival Specials
Thursday 2 August
FAIRPORT CONVENTION
ROGER MCGOUGH + LITTLE MACHINE
Friday 3 August
THE UKULELE ORCHESTRA OF GREAT BRITAIN

Eliza Carthy & The Wayward Band
Show Of Hands • Cara Dillon • Karine Polwart
Kathryn Tickell & The Darkening • Blowzabella
Drever, McCusker, Woomble • John Doyle
Gigspanner Big Band • False Lights
Elephant Sessions
Gordie MacKeeman & His Rhythm Boys
Stick In The Wheel
Martin Carthy & John Kirkpatrick
Steve Tilston & Jez Lowe
Alistair Anderson & Northlands
Jackie Oates • Edgelarks • Faustus
The Rheingans Sisters
Peter Knight & John Spiers • Les Barker
Blackbeard's Tea Party • The Emily Askew Band

Billy Bragg In Conversation
Will Pound's Through The Seasons
Peggy Seeger In Conversation
Matthew Crampton & Paul Sartin present:
Living By The Sea
and hundreds more

"There are festivals...and there's Sidmouth. Still uniquely glorious and gloriously unique after all these years." Colin Irwin

www.sidmouthfolkweek.co.uk
or call the box office 01395 577952

MEDIA SPONSOR
fROOTS
www.froots.org.uk

b-side 08-16 SEPTEMBER, PORTLAND, DORSET

Be Here Now

1000 IDEAS, ONE AMAZING ISLAND
FESTIVAL 2018
ART | FILM | SOUND | PERFORMANCE

Supported by
ARTS COUNCIL ENGLAND

b-side.org.uk

Bridgwater Quayside Festival

SUMMER FESTIVAL
SATURDAY 21st JULY
11am – 5pm

Blake Gardens
Angel Place
Town Centre

Music, Arts,
Street Theatre, Circus,
Local Food & Drink

FREE

Celebrating Sedgemoor #Circus250

www.bridgwaterquaysidefestival.co.uk

FROME OPEN STUDIOS

Art Trail

#fromeopenstudios

ceramics sculpture prints cards
jewellery paintings textiles ceramics
illustration photography prints
ceramics jewellery paintings
textiles illustration photography
photography 3D prints cards
paintings prints ceramics illustration
sculpture textiles jewellery

7-15 July 2018
11am - 5pm

Free brochure online & in local venues

www.fromeopenstudios.co.uk
info@fromeopenstudios.co.uk

f o t

Priddy Folk Festival
July 6th-8th

Anxo Lorenzo, Blue Rose Code, The
Young'uns, Imar, Dipper Malkin, The
Drystones, Sam Kelly Trio,
Three Cane Whale, Tannara, Alden Patterson
& Dashwood, Grace Petrie,
The Flatville Aces,
Alice Florence & The Vines, Kate Griffin &
Ford Collier, West Gallery singers

MEDIA SPONSOR
FRUITS
www.fruitmag.com

AEO
SOMERSET

HALSWAY
MANOR

PAW!

**PURBECK ART WEEKS
FESTIVAL**
26 May – 10 June

Open studios
Concerts
Talks
Workshops
Competitions

2018

Two weeks of art
and discovery...

www.purbeckartweeks.co.uk

www.evolver.org.uk

VISUAL ARTS

'SUMMER EXHIBITION 2018'

15 June - 29 August

McNeill Gallery of Contemporary Art, 2 Market Place, PEWSEY, SN9 5AA.

Tuesday - Friday 11am - 5pm, Saturday 11am - 2.30pm. 07702 472326 / 01672 564802 / www.mcneillgallery.com.

THE DORSET FIVE: 'COLOURATION'

16 - 24 June

Eyep Centre for the Arts, Mount Lane, EYPE, Bridport, DT6 6AR. 10.30am - 4.30pm (Sunday 24 June 10.30am - 2pm. 01308 814480. "An explosion of colour in a wide variety of styles and media."

MARK CORETH: 'AFRICA AND OTHER ADVENTURES'

16 June - 4 July

The Jerram Gallery, Half Moon Street, Sherborne, DT9 3LN. Tuesday - Saturday 9.30am - 5pm. 01935 815261.

KATE NOBLE: 'A CELEBRATION'

16 June - 7 July

Andelli Art, Mendip House, Upper Breach, SOUTH HERRINGTON, Wells, BA5 3QG. Tuesday - Saturday 10am - 5pm. www.andelliart.com.

'SOUNDS OF SUMMER'

16 June - 13 July

Abbey Muse Art Gallery, 56 - 58 High Street, GLASTONBURY, BA6 9DY. Monday - Saturday 11am - 4pm. 07919 427048.

'IN RELATION'

16 June - 9 September

Royal West of England Academy, Queen's Road, Clifton, BRISTOL, BS8 1PX. Tuesday - Saturday 10am - 5.30pm, Sunday 11am - 5pm. 0117 973 5129 / www.rwa.org.uk. "Work by some of Britain's most influential artist couples, including Laura and Harold Knight, Dod and Ernest Procter, Eric Ravilious and Tirzah Garwood, Robert MacBryde and Robert Colquhoun, Rose and Roger Hilton, Vanessa Bell and Duncan Grant, and Ben Nicholson and Barbara Hepworth."

'TOGETHERNESS'

16 June - 9 September

Royal West of England Academy, Queen's Road, Clifton, BRISTOL, BS8 1PX. Tuesday - Saturday 10am - 5.30pm, Sunday 11am - 5pm. 0117 973 5129 / www.rwa.org.uk. "Featuring artistic partnerships, like John Wood and Paul Harrison, Emma Biggs and Matthew Collings, Andy Holden and Steve Roggenbuck, this original exhibition raises wider questions about group dynamics, activism, authorship and public participation."



LYNNE GRACE 'ROLL'

COLOURS OF DORSET

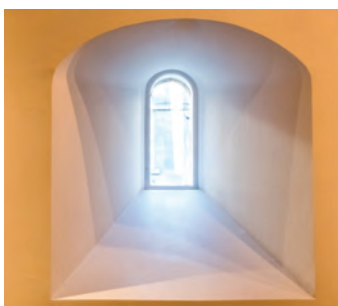
"Exhibition of uniquely colourful and inspiring paintings by Caroline Liddington and Lynne Grace. Highly original paintings of intriguing interior and exterior landscapes, birds, beaches and the ocean."

30 June - 8 July: Eyep Centre for the Arts, St Peters Chapel, Mount Lane, EYPE, Bridport, DT6 6AP. 10am - 5pm. 07958 756368 / 07739 905501 / www.eyepchurcharts.co.uk.

RITA BROWN: 'ON THE EDGE'

19 June - 21 July

Foyer Gallery, Bridport Arts Centre, South Street, Bridport, DT6 3NR. Tuesday - Saturday 10am - 4pm. www.bridport-arts.com.



'THERE IS ONLY LIGHT'

21 - 27 June

The Malthouse Gallery, The Town Mill, Mill Lane, LYME REGIS, DT7 3PU. 10.30am - 4.30pm. www.townmillarts.co.uk. "30th anniversary exhibition by Dorset Independent Photographers."

JACQUELINE JONES

21 June - 10 July

LT Gallery, 1 Orchard Street, WESTON-SUPER-MARE, BS23 1RG. Tuesday, Friday and Saturday 10am - 4pm, Thursday 12noon - 7pm. 07730 431726 / www.ltgallery.com. "Jacqueline describes her work as an expressive reaction and interpretation to the environment she lives in."

'CELEBRATING THE ARTS'

23 June

Digby Hall, Hound Street, SHERBORNE, DT9 3AA. 11am - 4pm. 01935 815899 / www.sherborneartslink.org.uk. "A day of demonstrations, workshops, exhibitions and activity celebrating the creativity of the community in and around Sherborne. Join us and get involved."

'BACK TO BLUE'

23 June - 15 July

Round Tower Gallery, Black Swan Arts, 2 Bridge Street, FROME, BA11 1BB. Monday - Saturday 10am - 4pm. 01373 473980. "Work by mixed media artists Carolyn Griffiths, Hans Borgonjon and Sue Conrad."

PIP WOOLF: 'MATTER OF IDENTITY'

23 June - 21 July

Ace Arts, Market Place, SOMERTON, TA11 7NB. Tuesday - Saturday 10am - 5pm. www.acearts.co.uk. "Work exploring dementia and identity."

'SUMMER SHOW'

25 June - 3 August

Atkinson Gallery, Millfield School, STREET, BA16 0YD. Monday - Saturday 9.30am - 5pm. 01458 444322. "Open entry exhibition of work by local artists. Sculpture park also open - please contact us before visiting."

'THE ART OF STARING OUT TO SEA'

27 June - 3 July

The Gallery, Shaftesbury Art Centre, 11 Bell Street, SHAFTESBURY, SP7 0PX. Monday - Saturday 10am - 4pm. 01425 613714. "Printmaking on the edge, come hell or high water!"

'THEM, AGAIN!'

29 June - 11 July

The Courtyard Gallery, The Town Mill, Mill Lane, LYME REGIS, DT7 3PU. 10.30am - 4.30pm. www.townmillarts.co.uk. "Paintings by Zee Jones and Pamela Allsop."



ODD MAN OUT: Simon Quadrat
PPRWA NEAC new paintings from 12 May
Artist's Talk: Friday 22 June 6.30pm £10/£25 with dinner



SLADERS YARD & CAFÉ SLADERS
Contemporary Art, Furniture & Craft, West Bay
t01308 459511 sladersyard.co.uk @sladersyard



SEA CLIFFS Vanessa Gardiner
new paintings 12 May - 1 July
Petter Southall furniture & leading artists

PERFORMANCE

May and June 2018



GRIS-DE-LIN

Bridport songwriter and multi-instrumentalist Gris-de-Lin has just released her debut album *Sprung* (in the spring appropriately) and her eclectic approach to music is already drawing comparisons to Kate Bush and Björk. Describing her sound as post-rock and blues meets alt-folk with a sprinkling of wonky electronica, Gris-de-Lin recorded the album in a nursery school just outside Bridport.

"I see myself very much as a Dorset artist, it's such an inspiring place to be. After years in London the sea lured me back! I find it easier to be creative here somehow."

Though she's been a busy working musician for many years, collaborating with the likes of The Duke Spirit, Tunng, Gemma Ray, Joe Gideon and Jim Scavunos (Nick Cave and the Bad Seeds) this is the first time she's gone solo - playing most of the instruments on the album herself (from synths and guitars to drums and saxophone).

"I wanted to challenge myself this time and to experiment really freely. It was pretty liberating to get to call all the shots myself. I was lucky to work with a brilliant engineer / producer Chris Hamilton and also to have Rob Ellis come play on a couple of tracks too. That was a real boost as I've been a fan of his drumming for a long time."

Her DIY approach to music carries through to her videos, all of which are filmed in West-Country locations with filmmaker friends. "It's fun to see what you can do on a shoestring with a little imagination!"

Gris-de-Lin will be playing several festivals over the summer and is currently planning a tour for the autumn.

Sprung is out on BB*Island now, available in record shops and online.

14 June: Swim, Marine Parade, LYME REGIS, Dorset, DT7 3JH. 8pm. 01297 442668 / www.weswim.co.uk.

8 July: Sunset Ridge, Prince of Wales, HAM HILL, near Yeovil, TA14 6RW. 1 - 8pm.

www.grisdelin.com

Photograph by Brendan Buesnel



BRIDPORT TIMES

A MONTHLY CELEBRATION OF PEOPLE, PLACE AND PURVEYOR

OUT NOW
AND ONLINE

www.bridporttimes.co.uk

PERFORMANCE

'GUYS & DOLLS'

2 - 5 May
Lighthouse, Kingland Road, POOLE,
BH5 1UG. 7.30pm (Saturday matinee
2.30pm). www.lighthousepoole.co.uk.

'THE ABSOLUTE TRUTH ABOUT ABSOLUTELY EVERYTHING'

3 May
Lighthouse, Kingland Road, POOLE,
BH5 1UG. 8pm. 01202 280000 /
www.lighthousepoole.co.uk. "A piece
of experimental storytelling for two
performers: the writer, and a different,
unprepared, female actor at each
performance. A show about culture,
capitalism, patriarchy, trying to find the
truth, heartbreak and touching yourself
where you shouldn't when you think no
one else is looking."

'EDUCATION EDUCATION EDUCATION'

3 - 5 May
Salisbury Playhouse, Malthouse Lane,
SALISBURY, SP2 7RA. 7.45pm. £13.50.
www.salisburyplayhouse.com. "A love
letter to schools of the 1990s, asking
big questions about a country in special
measures."

AZHAAR: 'ORIGINAL LOVE'

4 May
Frome Jazz Club, The Cornerhouse,
1 Christchurch Street East, FROME,
BA11 1QA. Free entry. 01373 472042 /
www.azhaarsaffar.com. "Violinist and
singer-songwriter Azhaar Saffar is
releasing her first album since fronting
acclaimed Brazilian jazz group Sirius B.
She is joined by a fantastic global line-
up taking us on a voyage, redefining
the musical boundaries with an
irreverent fusion of world rhythms, funk
and jazz enhanced by Azhaar's glorious
violin."

HARP AND A MONKEY

4 May
The Village Pump, The Lamb, Mortimer
Street, TROWBRIDGE, BA14 8BN,
8pm. £10. 01225 865107. "Electro-
folk."

'THE SOUND OF BLUE NOTE'

4 May
Bocabar, Red Brick Building, Morland
Road, GLASTONBURY, BA6 9FT. £6.
www.glastonburybocabar.co.uk.
"Celebrating the music of the iconic
sound of the '50s and '60s Blue Note
Records."

'RHYTHM OF THE NIGHT'

4 and 5 May
Octagon Theatre, Hendford, YEOVIL,
BA21 1UX. 7.30pm. £28 / £26.50 /
£24.50. www.octagon-theatre.co.uk.



SCOTTISH DANCE THEATRE: VELVET PETAL

"Tough girls and pretty boys living life in the margins, dreaming about being at the centre. Inspired by the life-cycle of the Monarch butterfly, Robert Mapplethorpe's polaroids, and the transformative power of beauty, created out of whatever is on the bedroom floor. Set to a fresh dance-punk score arranged by Torben Lars Sylvest."

16 - 18 May: Trinity Bristol, Trinity Road, BRISTOL, BS2 0NW. 7pm. £14 / £10. 0117 935 1200 / www.trinitybristol.org.uk.

23 May: Lighthouse, Kingland Road, POOLE, BH5 1UG. 7.45pm. 01202 280000 / www.lighthousepoole.co.uk.



'SINERGIA'

5 May
Pavilion Dance South West, Westover
Road, BOURNEMOUTH, BH1 2BU.
7.30pm. £18 / £16 / £14 / £12.
01202 203630 / www.pds.org.uk. "A
powerful evening of flamenco led by
Manuel Liñán."

HONEYFEET + BINBAG WISDOM

5 May
Trinity Bristol, Trinity Road, BRISTOL,
BS2 0NW. 9pm. £12. 0117 935 1200 /
www.trinitybristol.org.uk.

PICCADILLY DANCE ORCHESTRA

5 May
Westlands Entertainment Venue,
Westbourne Close, YEOVIL, BA20 2DD.
7.30pm. £15. 01935 422884. "From the
Charleston and Black Bottom of the
1920s through the beautiful classic
songs of the 1930s, to swing and jazz
mayhem."

DEVON YOUTH JAZZ ORCHESTRA

5 May
The Beehive, Dowell Street, HONITON,
EX14 1LZ. 7.30pm. £10. 01404 384050
/ www.beehivehoniton.co.uk.

'TOM THUMB'

6 May
Corn Exchange, High East Street,
DORCHESTER, DT1 1HF. 01305 266926
/ www.dorchesterarts.org.uk.
11.30am and 2.30pm. £8 / £6.
"CBeebies' Patrick Lynch brings this
classic story to life in a fascinating
show."

'LET'S HANG ON'

6 May
Octagon Theatre, Hendford, YEOVIL,
BA21 1UX. 7.30pm. £24. 01935 422884
/ www.octagon-theatre.co.uk.

'OUT OF THE ASHES'

9 May
Corn Exchange, High East Street,
DORCHESTER, DT1 1HF. 7pm. £10 /
£8. www.dorchesterarts.org.uk. "Based
on the novel by Michael Morpurgo, this
is the story of farm girl Becky's
experiences during the outbreak of
foot and mouth disease across the UK."

FOLK CAFÉ

9 May
The Beehive, Dowell Street, HONITON,
EX14 1LZ. 8pm. Free entry. 01404
384050 / www.beehivehoniton.co.uk.

'DAD'S ARMY RADIO HOUR'

9 May
Lighthouse, Kingland Road, POOLE,
BH5 1UG. 7.45pm. 01202 280000.



A series of free talks,
lectures, live performances
and screenings in support of



DORSET ART WEEKS EXHIBITION OPENING

In conversation plus Q&A with artists Paul Newman,
Russell Denman & Eleanor Goulding

SATURDAY 26TH MAY, 6PM - 8PM

Handcrafted spirits, liqueurs and cocktails from
FORAGER SPIRIT

Tastings, dumplings, samosas and bakes from
COMINS TEA

CHURCH STUDIO HAYDON DORSET DT9 5JB

A new collaborative project from
EVOLVER DENMAN & GOULD

Suggested donation £7

HUMAN FLOW - AI WEI WEI

Film Screening (in collaboration with Sherborne Area Refugee Support)

SATURDAY 9TH JUNE, 7.30PM

Ticketed event - £7 in advance from www.other-side.eventbrite.co.uk
www.denmangould.com/other-side

**SHERBORNE
TIMES**



Wednesday 23 May

Fleur Darkin Scottish Dance Theatre

Velvet Petal

Lively, playful and a gusty piece of dance theatre. Set to a fresh dance-punk score exploring the transformative power of beauty, created out of whatever is on the bedroom floor.

7.45pm



Friday 25 May

Love, Bombs & Apples

Funny and poignant, powerful political theatre from award-winning playwright Hassan Abdulrazzak: a one man show with a sharp cutting edge for today's multi-cultural Britain.

Age Guidance 16+ | 8pm



Friday 8 June

Wuthering Heights

THE MUSIC OF KATE BUSH

Rachel Sinetta and The Rubber Band capture the magic of Kate Bush's work from early albums and recreate the ethereal atmosphere which surrounds much of her compositions.

7.30pm



Friday 8 June

Sh!t Theatre

DollyWould

The multi award-winning duo, Sh!t Theatre just love Dolly Parton. Their bold new show is about the country legend, cloning, branding, immortality and death.

Age Guidance 16+ | 8pm



Friday 15 June

SISATA

Frankenstein

John Foster delivers a contemporary reworking of Frankenstein, examining the human ideal of perfection, psychosexual identity and politics of gender and transgenderism.

8pm

PERFORMANCE



THE CERULEO ENSEMBLE: BURYING THE DEAD

"Comprising two sopranos (Emily Owen and Jenni Harper), Stoke Doi-Luck on harpsichord, Kate Conway on cello and viol, Toby Carr on guitar and lute and actor Gerald Kyd, Ceruleo tell stories through a captivating blend of words and music."

3 May: Lower Pulworthy, Highampton, HATHERLEIGH, Devon, EX21 5LQ. 7.30pm. £15. 01837 810940.

4 May: Bridport Arts Centre, South Street, BRIDPORT, DT6 3NR. 11am. £10. 01308 424204 / www.bridport-arts.com.

4 May: Ilminster Arts Centre, The Meeting House, East Street, ILMINSTER, TA19 0AN. 8pm. £15. www.themeetinghouse.org.uk.

5 May: The Dance House, Gouldsbrook View, North Street, CREWKERNE, TA18 7AL. 6.45pm. £15. 07776 995789.

'CRIMES UNDER THE SUN'

10 - 12 May

Salisbury Playhouse, Malthouse Lane, SALISBURY, SP2 7RA. 7.45pm. £13.50 / www.salisburyplayhouse.com.

INTARSIA

11 May

Pound Arts Centre, Pound Pill, CORSHAM, SN13 9HX. 8pm. Free entry. 01249 701628. "Original and traditional material inspired by English songs, European dance tunes, West African rhythms and more."

'WHOOSH!'

13 May

Weston Studio, The Edge, University of Bath, Claverton Down, BATH, BA2 7AY. 12noon and 2.30pm. £9. 01225 386777 / www.edgearts.org. "Three musicians enchantingly blow you to a warm world of breath and wind."

DORCHESTRA AND THE QUANGLE WANGLE SINGERS

13 May

Corn Exchange, High East Street, DORCHESTER, DT1 1HF. 3.30pm. Free entry. www.dorchesterarts.org.uk. "An excellent Sunday afternoon treat."

CORSLEY FESTIVAL CHOIR

13 May

St Margaret's Church, CORSLEY, BA12 7QE. 7pm. £12.50 / £5. www.corsleyfestivalchoir.co.uk. "Corsley Festival Choir are performing Handel's Messiah Parts II and III."

'HOW (NOT) TO LIVE IN SUBURBIA'

14 and 15 May

Trinity Bristol, Trinity Road, BRISTOL, BS2 0NW. 7pm. £14 / £10. 0117 935 1200. "A few years ago in the middle of a shitstorm of life events, single mother, artist and proud Londoner Annie Siddons found herself living in suburbia by accident. This show is a hilarious, brutal and poignant attempt to describe what happened next."

'WE ARE LIGHTNING!'

15 - 18 May

Trinity Bristol, Trinity Road, BRISTOL, BS2 0NW. 9pm. £17 / £13. 0117 935 1200. "Acclaimed Australian artist Joseph O'Farrell and Sam Halmarack combine theatre with the fist-pumping euphoria and power ballads of a stadium gig, in a darkly comical work that reflects on the importance of communal spaces where people can come together and express themselves."



FLYING FOLK

11 May

Ilminster Arts Centre, The Meeting House, East Street, ILMINSTER, TA19 0AN. 8pm. £10. 01460 54973.

MR B THE GENTLEMAN RHYMER

11 May

Town Hall, Market Street, TROWBRIDGE, BA14 8EQ. 8pm. £10. www.townhallarts.co.uk.

PHILIP CLOUDS AND RON PHELAN

11 and 12 May

Tincton Gallery, The Old School House, TINCLETON, near Dorchester, DT2 8QR. 7.30pm. £12. 01305 848909 / www.tinctongallery.com. "Philip Clouds presents a lively and original take on jazz, with exceptional bassist Ron Phelan, drawing inspiration from African and Latin American music."

01202 280000

www.lighthousepoole.co.uk



PERFORMANCE

'THOROUGHLY MODERN MILLIE'

15 - 19 May

Lighthouse, Kingland Road, POOLE, BH5 1UG. 7.45pm (Wednesday, Thursday and Saturday matinees 2.30pm). www.lighthousepoole.co.uk.

'THE IMMIGRANT'

16 May

Corn Exchange, High East Street, DORCHESTER, DT1 1HF. 8pm. £13 / £11 / £5. www.dorchesterarts.org.uk. "Slapstick comedy inspired by Charlie Chaplin's film of the same name."

'LAST RESORT'

16 May

The Lyric Theatre, BRIDPORT, DT6 3LX. 4 and 8pm. £12 / £5. 01308 424901. "Last Resort is the alternative future for Guantanamo Bay. You'll sit in a deckchair, you'll get a rum cocktail on arrival and you'll feel the sand between your toes."

'INVISIBLE MUSIC'

17 May

Lighthouse, Kingland Road, POOLE, BH5 1UG. 2 and 8pm. 01202 280000. "What happens when the soundtrack to your life starts to change?"

THE COMEDY AVENGERS

17 May

The Beehive, Dowell Street, HONITON, EX14 1LZ. 8pm. £8 / £6. 01404 384050.

TIM VINE

17 and 18 May

Westlands Entertainment Venue, Westbourne Close, YEOVIL, BA20 2DD. 8pm. £25. www.westlandseyovil.co.uk.

'ENGINE BRAKE'

17 - 19 May

Salisbury Playhouse, Malthouse Lane, SALISBURY, SP2 7RA. 7.45pm. £13.50 www.salisburyplayhouse.com. "A story connecting two people and two cities, told through shifting the gears of our relationship with cars, over decades and across continents."

CARA DILLON

18 May

The Beehive, Dowell Street, HONITON, EX14 1LZ. 8pm. £20 / £10. 01404 384050 / www.beehivehoniton.co.uk.

'SHARP'S APPALACHIAN HARVEST'

18 May

Halsway Manor, Halsway Lane, near CROWCOMBE, TA4 4BD. 01984 618274. 8pm. £10 / £4.

MARTIN SIMPSON

18 May

The Village Pump, The Lamb, Mortimer Street, TROWBRIDGE, BA14 8BN. 8pm. £12. 01225 865107.



MACBETH

"Multi award-winning Mark Bruce Company presents a striking theatre dance adaptation of Shakespeare's Macbeth."

10 - 12 May: Salisbury Playhouse, Malthouse Lane, SALISBURY, SP2 7RA. 7.30pm. £19.50 / £11.50. www.salisburyplayhouse.com.

MIKE DENHAM'S SPEAKEASY

18 May

Ilminster Arts Centre, The Meeting House, East Street, ILMINSTER, TA19 0AN. 8pm. £14. 01460 54973. "Jazz."

NAMVULA

18 May

Village Hall, WINTERBORNE STICKLAND, DT11 0NT. 7.30pm. £10 / £7. www.artsreach.co.uk.



MOSCOW DRUG CLUB

18 May

Pound Arts Centre, Pound Pill, CORSHAM, SN13 9HX. 7.30pm. £15 / £14. www.poundarts.org.uk.

NAMVULA

19 May

Village Hall, BROADMAYNE, DT2 8EW. 7.30pm. £10 / £7. 07443 659912.

THE PHOENIX SINGERS:

'MAGNIFICENT MR HANDEL'

19 May

Church of St Peter and St Paul, Hele Lane, SOUTH PETHERTON, TA13 5DQ. 7.30pm. £15 / £12. 01823 432704 / www.thephoenixsingers.co.uk. "The glorious music of Handel, performed by The Phoenix Singers and a Handelian Instrumental Ensemble."

JONATHAN VEIRA

19 May

Martock Parish Church, MARTOCK, TA12 6JL. 7.30pm. £12. 01935 827759. "Billy Joel to Mozart via ballads, rock'n'roll, blues and jazz."

'RETRO NIGHT'

19 May

Royal Albert Memorial Museum, Queen Street, EXETER, EX4 3RX. 7pm. £19 / £15. www.rammuseum.org.uk. "Whatever groove you've got is rad by us. With the multi-award-winning Loose Cannons Band."

JOHN ETHERIDGE & VIMALA ROWE

19 May

Sladers Yard, West Bay Road, WEST BAY, Bridport, DT6 4EL. 6.30pm. £15 (£30 with dinner). 01308 459511 / www.sladersyard.co.uk.

GARY LUCAS

19 May

Pound Arts Centre, Pound Pill, CORSHAM, SN13 9HX. 7.30pm. £15 / £14. www.poundarts.org.uk. "One of the most daring guitarists America has ever seen."

RESONATORS

19 May

Trinity Bristol, Trinity Road, BRISTOL, BS2 0NW. 10pm. £10. 0117 935 1200.

LANKUM

20 May

Salisbury Rugby Club, Castle Road, SALISBURY, SP1 3SA. 8pm. £12.50. 07941 079920. "Dublin's folk miscreants combine distinctive four-part harmonies with arrangements of uilleann pipes, concertina, Russian accordion, fiddle and guitar."

GAZ COOMBES

22 May

Trinity Bristol, Trinity Road, BRISTOL, BS2 0NW. 7.30pm. 0117 935 1200.

LL R WILLIAMS

23 May

Royal Albert Memorial Museum, Queen Street, EXETER, EX4 3RX. 6.45pm. £22 / £17. 01392 265858. Piano recital.

TABEA DEBUS

23 May

Pound Arts Centre, Pound Pill, CORSHAM, SN13 9HX. 1pm. £7.50 / £5. www.poundarts.org.uk.

LONDON HANDEL PLAYERS

23 May

Octagon Theatre, Hendford, YEOVIL, BA21 1UX. 7.30pm. £23 / £21.50 / £20. www.octagon-theatre.co.uk.

BALLETBOYZ

24 May

Octagon Theatre, Hendford, YEOVIL, BA21 1UX. 7.30pm. £18 / £16.50. www.octagon-theatre.co.uk.

LAUGHING BOY COMEDY CLUB

24 May

Westlands Entertainment Venue, Westbourne Close, YEOVIL, BA20 2DD. 8pm. £10 / £9. 01935 422884.

'CALL MR ROBESON'

24 May

Corn Exchange, High East Street, DORCHESTER, DT1 1HF. 01305 266926 / www.dorchesterarts.org.uk. 8pm. £13 / £11 / £5. "This roller-coaster journey in words and music through Paul Robeson's remarkable life highlights how his pioneering and heroic political activism led many to describe him as the forerunner of the civil rights movement."

- 24 CHANNEL DOA CONSOLE
- GEAR BY NEUMANN, UA, AUDIENT ETC
- BABY GRAND
- VINTAGE GUITARS
- BBC RADIO PLAYLISTED
- 5 MILES FROM GLASTONBURY

Take a tour inside at
SPACEWOLF.CO.UK




RECORDING STUDIO

SOMERSET ENGLAND

Recent clients include

THE PINEAPPLE THIEF, THE CHESTERFIELDS, NICK PARKER, MY NAME IS IAN...



PERFORMANCE

PETER KNIGHT'S GIGSPANNER

24 May
Lighthouse, Kingland Road, POOLE,
BH5 1UG. 8pm. 01202 280000.

LEWIS CLARK & THE ESSENTIALS

25 May
Pound Arts Centre, Pound Pill,
CORSHAM, SN13 9HX. 7.30pm. £12 /
£10. www.poundarts.org.uk.

JOE MCLEDDERY

25 May
Octagon Theatre, Hendford, YEOVIL,
BA21 1UX. 7.30pm. £61 / £26 / £23 /
£16. www.octagon-theatre.co.uk.

'ADOLF'

25 May
Town Hall, Market Street,
TROWBRIDGE, BA14 8EQ. 7.30pm.
£11 / £9. 01225 774306. "Pip Utton's
brilliant portrayal of Adolf Hitler."

'REMEMBERING FRED'

25 May
Lighthouse, Kingland Road, POOLE,
BH5 1UG. 7.30pm. 01202 280000.
"Strictly Come Dancing stars Aljaz
Skorjanec and Janette Manrara's
evening of song and dance celebrating
Hollywood icon Fred Astaire."

'LOVE, BOMBS AND APPLES'

25 May
Lighthouse, Kingland Road, POOLE,
BH5 1UG. 8pm. 01202 280000. "Funny
and poignant, powerful political theatre
from award-winning playwright Hassan
Abdulrazzak."



THE NEIL MAYA QUARTET

25 May
Ilminster Arts Centre, The Meeting
House, East Street, ILMINSTER, TA19
0AN. 8pm. £14. 01460 54973. "A
tribute to the music of Dave Brubeck."

ROBBIE MCINTOSH, KEN WATKINS, SIMON SWARBRICK, LUCY WATKINS

26 May
Portesham Village Hall, Malthouse
Meadow, PORTESHAM, DT3 4NS.
7.30pm. £14. 01305 837299. "Four
outstanding musicians performing
acoustic music, inspired by folk and
country, as well as blues and jazz
standards."



BLOWZABELLA

"International folk legends Blowzabella celebrate 40 years with a
concert and dance at Halsway Manor."

12 May: Halsway Manor, Halsway Lane, near CROWCOMBE, TA4 4BD.
8pm. £15 / £6. 01984 618274 / www.halswaymanor.org.uk.

BSO: 'PETER AND THE WOLF'

27 May
Lighthouse, Kingland Road, POOLE,
BH5 1UG. 3.30pm. 01202 280000.

'TIDY UP'

29 May
Salisbury Playhouse, Malthouse Lane,
SALISBURY, SP2 7RA. 11am and 2pm.
£9. www.salisburyplayhouse.com.
"Inspired by children's logic to creating
order, patterns and systems, Tidy Up
invites you to an unforgettable party
where orderliness becomes exciting for
children and chaos becomes joyful for
parents."

'THE LITTLE MOCHI MAN'

30 May
Salisbury Playhouse, Malthouse Lane,
SALISBURY, SP2 7RA. 11am and 2pm.
£9. www.salisburyplayhouse.com. "With
origami puppets, animation and
specially-composed music, this is the
perfect introduction to Japan for young
children."

'PERSUASION'

30 May
Corn Exchange, High East Street, DT1
1HF, 8pm, £13 / £11 / £5.

THE HANDLEBARDS: 'ROMEO & JULIET'

30 May
Pound Arts Centre, Pound Pill,
CORSHAM, SN13 9HX. 2pm. £10 / £8.
www.poundarts.org.uk. "The world's
first cycling theatre company present
their 'seriously silly' production of
Romeo and Juliet. Expect riotous
amounts of energy, a fair old whack of
chaos, and lots of laughter."

JUBILEE STRING QUARTET

31 May
Lower Pulworthy, Highampton,
HATHERLEIGH, Devon EX21 5LQ.
7.30pm. £15. 01837 810940. "Award-
winning quartet play a programme of
Hady, Beethoven and Schubert."

CALAN

31 May
Corn Exchange, High East Street,
DORCHESTER, DT1 1HF. 8pm. £16 /
£14 / £5. 01305 266926. "Fiddles,
guitar, accordion, bagpipes and step
dancing explode into life! Introducing
the world to a new generation of Welsh
music, Calan are full of infectious
rhythms and high energy routines."

SQUASHBOX THEATRE: 'STONES AND BONES'

31 May
Corn Exchange, High East Street,
DORCHESTER, DT1 1HF. 11am and
1.30pm. £8 / £6. 01305 266926. "A
marvellous mix of history and mystery!"

'PETER PAN'

31 May - 2 June
Octagon Theatre, Hendford, YEOVIL,
BA21 1UX. 7pm (Friday and Saturday
matinees 2pm). £14 / £12. 01935
422884 / www.octagon-theatre.co.uk.

'LOVE ON THE LINKS'

31 May - 23 June
Salisbury Playhouse, Malthouse Lane,
SALISBURY, SP2 7RA. 7.30pm. £27 /
£11. www.salisburyplayhouse.com.
"Adapted from the golfing stories of
PG Wodehouse, this is a splendid
evening of high-jinks and hilarity."

JUBILEE STRING QUARTET

1 June
Bridport Arts Centre, South Street,
BRIDPORT, DT6 3NR. 11am. £10.
01308 424204 / www.bridport-
arts.com. See 31 May.

'HOW TO SURVIVE A POST-TRUTH APOCALYPSE'

1 June
Lighthouse, Kingland Road, POOLE,
BH5 1UG. 8pm. 01202 280000 /
www.lighthousepoole.co.uk. "Francesca
Beard leads us on an epic adventure
through a stranger than fiction
underworld of lies, fabrications and
'facts'. A show for everyone who said
they read the terms and conditions."

JUBILEE STRING QUARTET

1 June
Ilminster Arts Centre, The Meeting
House, East Street, ILMINSTER, TA19
0AN. 8pm. £15. 01460 54973. See 31
May.

THE HEATHER WENSLEY QUARTET

1 June
Bocabar, Red Brick Building, Morland
Road, GLASTONBURY, BA6 9FT. £6.
www.glastonburybocabar.co.uk. "Latin
rhythms and jazz."

MASEGO

2 June
Trinity Bristol, Trinity Road, BRISTOL,
BS2 0NW. 7pm. £15. 0117 935 1200.

TENEBRAE: 'SPANISH GLORIES OF THE 16TH CENTURY'

2 June
St Mary's Church, Edward Road,
DORCHESTER, DT1 2HL. 7pm. £25 /
£23. 01305 266926. "One of the
world's leading vocal ensembles."

SUBSCRIBE TO EVOLVER

£24 (6 issues starting with EVOLVER 106 (July and August 2018 issue))

| |
|----------|
| NAME |
| ADDRESS |
| |
| |
| |
| POSTCODE |

Send cheque (payable to 'Evolver Media') to:
EVOLVER MEDIA, 8 BUCKLAND ROAD, PEN MILL TRADING ESTATE,
YEOVIL, SOMERSET BA21 5EA

FREE online LIVE MUSIC

SOUNDCHECK

14 NEW LIVE VIDEOS in May/June
Rock, Indie pop, Acoustic, Folk, Country, Punk,
Blues, Jazz...

Watch LIVE on facebook.com/visualradioarts

NEW Soundcheck Radio...
Original LIVE MUSIC and NO CHAT
visualradioarts.co.uk/soundcheck-radio

PERFORMANCE



STACEY KENT

"Grammy-nominated vocalist Stacey Kent's beautiful collection of songs includes American standards, bossa nova classics, chansons and original songs, including numbers co-written by Nobel Prize-winning author Kazuo Ishiguro, whose songwriting partnership with Stacey has formed an essential plank of her latest album *I Know I Dream*."

16 May: Salisbury Playhouse, Malthouse Lane, SALISBURY, SP2 7RA. 7.30pm. £23. www.salisburyplayhouse.com.

23 May: Corn Exchange, High East Street, DORCHESTER, DT1 1HF. 8pm. £23 / £21. 01305 266926 / www.dorchesterarts.org.uk.

JUBILEE STRING QUARTET

2 June

St Michael's, Shute, Haddon Road, Shute, AXMINSTER, Devon, EX13 7QR. 6.45pm. £15. 01297 33203. See 31 May.

BSO: 'RELAXED CONCERT'

3 June

Lighthouse, Kingland Road, POOLE, BH5 1UG. 3pm. 01202 280000. "A relaxed performance of the best-known pieces of classical music, brought to you by the full Bournemouth Symphony Orchestra in an informal setting."

THE HANDLEBARDS: 'ROMEO AND JULIET'

3 June

Maumbury Rings, Maumbury Road, DORCHESTER, DT1 1QN. 7.30pm. £13 / £11. 01305 266926. See 30 May.

LIVING SPIT: 'ONE MAN AND HIS COW'

6 June

Village Hall, SIXPENNY HANDLEY, SP5 5NJ. 7pm. £15. www.artsreach.co.uk.

'AVENUE Q'

6 - 9 June

Octagon Theatre, Hendford, YEOVIL, BA21 1UX. 7.30pm. £18. 01935 422884 / www.octagon-theatre.co.uk.

'RESONANCE'

7 June

The Lyric Theatre, BRIDPORT, DT6 3LX. 8pm. £12. 01308 424901. "Original music inspired by legends of female warriors, from a time when honour and elemental forces were the powers that influenced lives"

BOO HEWERDINE AND DARDEN SMITH

7 June

Halsway Manor, Halsway Lane, near CROWCOMBE, TA4 4BD. 8pm. £10 / £4. www.halswaymanor.org.uk. "To round-off a week teaching the craft of songwriting to others, Boo and Darden will tonight take to the stage to share some of their own music in an intimate gig."

LIVING SPIT: 'ONE MAN AND HIS COW'

7 June

Village Hall, DRIMPTON, DT8 3RF. 7.30pm. £15. 01308 867442.

BLACK WATER COUNTY

8 June

Corn Exchange, High East Street, DORCHESTER, DT1 1HF. 8pm. £12 / £10. www.dorchesterarts.org.uk.

DAVE MOORWOOD AND HIS BIG BEAR STOMPERS

8 June

Ilminster Arts Centre, The Meeting House, East Street, ILMINSTER, TA19 0AN. 8pm. £20. 01460 54973.



ROBIN INCE: 'PRAGMATIC INSANITY'

8 June

Salisbury Arts Centre, Bedwin Street, SALISBURY, SP2 3UT. 8pm. £15. 01722 320333. "The star of *The Infinite Monkey Cage* returns with his first new solo show for three years. A night about love, death and art (with a little bit of physics)."

'WUTHERING HEIGHTS: THE MUSIC OF KATE BUSH'

8 June

Lighthouse, Kingland Road, POOLE, BH5 1UG. 7.30pm. 01202 280000.

'AMAZONA'

9 June

Town Hall, Market Street, TROWBRIDGE, BA14 8EQ. 2pm. £5 / £3. www.townhallarts.co.uk. "After the tragic death of her child, Val left her kids and family behind and escaped into the Colombian jungle."



WET PAINT

28 APRIL - 2 JUNE

Heather MacGregor

BRIDPORT ARTSCENTRE

9 SOUTH STREET
BRIDPORT DT6 3NR
01308 424204
www.bridport-arts.com



Concerts IN THE West

PROMOTING AND SUPPORTING SOME OF THE
BEST YOUNG MUSICIANS WORKING TODAY.

15 FEBRUARY TO 6 OCTOBER 2018
BAROQUE TO CONTEMPORARY

| | |
|---------------------|---|
| 15, 16, 17 FEBRUARY | FERIO SAXOPHONE QUARTET |
| 15, 16, 17 MARCH | MARMEN QUARTET |
| 5, 6, 7 APRIL | ALBION QUARTET |
| 3, 4, 5 MAY | CERULEO - EARLY MUSIC |
| 31 MAY, 1, 2 JUNE | JUBILEE STRING QUARTET |
| 19, 20, 21 JULY | ERDEM MISIRLIOĞLU PIANO |
| 2, 3, 4 AUGUST | PELLÉAS ENSEMBLE |
| 6, 7, 8 SEPTEMBER | PIXELS ENSEMBLE |
| 4, 5, 6 OCTOBER | MICHAEL PETROV CELLO & ALEXANDER ULLMAN PIANO |

TOURS IN DEVON, DORSET AND SOMERSET

BRIDPORT, CREWKERNE, HATHERLEIGH
ILMINSTER, SHUTE, AND TAUNTON
director@concertsinthewest.org

CATHERINE MADDOCKS (HODGSON) DIRECTOR - 01823 252658



PERFORMANCE



OCTAGON THEATRE

JOE MCELERRY

FRIDAY 25 MAY

Joe is excited to bring this all new show to you with his easy wit and charm that has endeared him to all ages.



FAUSTUS

SATURDAY 13 JUNE

Nominated in the 2009 BBC Radio 2 Folk Awards, Faustus are three of the leading lights of their generation: Benji Kirkpatrick, Saul Rose and Paul Sartin.



THE UGLY DUCKLING

FRIDAY 15 JUNE

Northern Ballet's hugely popular Ugly Duckling is the perfect opportunity for your little ones to enjoy live ballet, music and theatre for the first time.

THE GLENN MILLER ORCHESTRA

SUNDAY 17 JUNE

The world's greatest big band transports you back to the heady days and music of the 1940s



KEVIN BRIDGES - WORK IN PROGRESS

MONDAY 25 JUNE

Catch Kevin as he tries out material ahead of his forthcoming UK and Ireland Tour.



BOX OFFICE: 01935 422884

BOOK ONLINE:

www.octagon-theatre.co.uk

OCTAGON THEATRE

Hendford, Yeovil, Somerset BA20 1UX



LEVERET

"Leveret features three of England's finest folk musicians in an exciting new collaboration. Andy Cutting, Sam Sweeney and Rob Harbron are each regarded as masters of their instrument."

16 June: Halsway Manor, Halsway Lane, near CROWCOMBE, TA4 4BD. 8pm. £15. 01984 618274 / www.halswaymanor.org.uk.

'LES MUSICALS'

9 June

Lighthouse, Kingland Road, POOLE, BH5 1UG. 7.30pm. 01202 280000.

'AN EVENING OF ERIC & ERN'

9 June

Lighthouse, Kingland Road, POOLE, BH5 1UG. 7.45pm. 01202 280000.

'WUTHERING HEIGHTS'

9 and 10 June

Corn Exchange, High East Street, DORCHESTER, DT1 1HF. Saturday 8pm, Sunday 3pm. £13 / £11. 01305 266926. "Emily Bronte's only novel is a timeless Gothic classic of passionate love, revenge and despair."

BSO: 'RUSTY AND NOT SO RUSTY MUSICIANS'

10 June

Lighthouse, Kingland Road, POOLE, BH5 1UG. 7.30pm. 01202 280000.

'ROCKTOPUS'

10 June

Trinity Bristol, Trinity Road, BRISTOL, BS2 0NW. 2pm. £5. 0117 935 1200 / www.trinitybristol.org.uk. "The ultimate rock band for kids and families! Join the band, learn the moves, and get involved in this truly interactive experience for kids and adults alike."

'LES MUSICALS'

10 June

Westlands Entertainment Venue, Westbourne Close, YEOVIL, BA20 2DD. 7.30pm. £56.50 / £24 / £23. 01935 422884. "The biggest hit songs from the West End and Broadway."

DAVID BADDIEL: 'MY FAMILY - NOT THE SITCOM'

12 June

Octagon Theatre, Hendford, YEOVIL, BA21 1UX. 7.30pm. £26.50. 01935 422884. "A massively disrespectful celebration of the lives of David Baddiel's late sex-mad mother, Sarah, and dementia-ridden father, Colin."

'THE TINA TURNER EXPERIENCE'

14 June

Octagon Theatre, Hendford, YEOVIL, BA21 1UX. 7.30pm. £23 / £21. 01935 422884 / www.octagon-theatre.co.uk.

'FRANKENSTEIN'

15 June

Lighthouse, Kingland Road, POOLE, BH5 1UG. 2 and 8pm. 01202 280000.

AXES + HOGGS BISON

15 June

Town Hall, Market Street, TROWBRIDGE, BA14 8EQ. 8pm. £7. www.townhallarts.co.uk. "Exciting and surprising instrumental music."

NORTHERN BALLET: 'THE UGLY DUCKLING'

15 June

Octagon Theatre, Hendford, YEOVIL, BA21 1UX. 2, 4 and 6pm. £7 / £6. www.octagon-theatre.co.uk.

THE CURFEW CREW + THE GAULOIS BROTHERS

15 June

Ilminster Arts Centre, The Meeting House, East Street, ILMINSTER, TA19 0AN. 8pm. £15. 01460 54973.

FAELAND

16 June

The Silk Mill Gallery, Silk Mill Studios, Merchants Barton, Saxonvale, Frome, BA11 1PT. 7.30pm. £13 / £10. www.faeland.co.uk. "Acoustic guitars, double bass, violin, accordion, Celtic harp and beautiful vocals."

DUNCAN HONEYBOURNE: 'SHADOWS - ECHOES OF THE GREAT WAR'

16 and 17 June

Tincton Gallery, The Old School House, TINCLETON, near Dorchester, DT2 8QR. 7.30pm. £12. 01305 848909. "This piano recital programme was devised by Duncan to commemorate the centenary of the Armistice that ended the First World War. It is woven around Ravel's captivating suite 'Le Tombeau de Couperin', with each of its six dance movements inscribed to the memory of a friend killed in this 'war to end all wars'."

RACHAEL MCSHANE AND THE CARTOGRAPHERS

17 June

Pound Arts Centre, Pound Pill, CORSHAM, SN13 9HX. 7.30pm. £16 / £14. 01249 701628. "Singer, cellist, fiddle and viola player Rachael McShane reworks traditional songs with a new band, The Cartographers."

THE GLENN MILLER ORCHESTRA

17 June

Octagon Theatre, Hendford, YEOVIL, BA21 1UX. 7.30pm. £22.50 / £21.50. www.octagon-theatre.co.uk.

Dorchester Arts



Stacey Kent
I Know I Dream
WEDNESDAY 23 MAY
CORN EXCHANGE

American Standards, Bossa Nova classics, Chansons and originals from this Grammy-nominated vocalist



Theatre6
Persuasion
WEDNESDAY 30 MAY
CORN EXCHANGE

A classic given new life by the Evening Standard and Stage One Award winning Theatre6



Tenebrae
Spanish Glories of the 16th Century
SATURDAY 2 JUNE
ST MARY'S CHURCH

'Phenomenal' (The Times)
'Devastatingly beautiful' (Gramophone Magazine)



The HandleBards
Romeo and Juliet
SUNDAY 3 JUNE
MAUMBURY RINGS

Expect riotous amounts of energy, a fair old whack of chaos, and a great deal of laughter

For full event listings, visit our website

Dorchester Arts, The Corn Exchange, High East Street, Dorchester DT1 1HF

www.dorchesterarts.org.uk | Charity No. 1015546

PERFORMANCE

JAZZ DANCE COMPANY: 'DECADES'

19 June
Octagon Theatre, Hendford, YEOVIL,
BA21 1UX. 7.30pm. £15 / £14 / £11 /
£7. www.octagon-theatre.co.uk.



ELLA RUNDLE AND JOHN PAUL EKINS

19 June
Royal Albert Memorial Museum, Queen
Street, EXETER, EX4 3RX. 6.45pm. £22
/ £17. www.rammuseum.org.uk. Cello
and piano recital.

ALEXANDRA VADUVA

20 June
Pound Arts Centre, Pound Pill,
CORSHAM, SN13 9HX. 1pm. £7.50 /
£5. www.poundarts.org.uk.

BRISTOL OLD VIC THEATRE SCHOOL: 'THE MILL ON THE FLOSS'

20 June
Village Hall, FRAMPTON, DT2 9NF.
7.30pm. £10 / £8. 01300 320607.
www.artsreach.co.uk.

'DECADES'

20 June
Lighthouse, Kingland Road, POOLE,
BH5 1UG. 7.30pm. 01202 280000.
"Jazz dance."

'GREAT EXPECTATIONS'

21 June
Lighthouse, Kingland Road, POOLE,
BH5 1UG. 8pm. 01202 280000. "David
Mynne takes you on a journey that
brings you a 'cast of thousands' in a
skilful, one-man adaptation of this epic
story."

DAVE MARTIN'S JABBO FIVE

21 June
Martock Parish Church, MARTOCK,
TA12 6JL. 7.30pm. £9 / £8. 01935
822706. "Classic jazz from the 1920s."

THE PRODUCERS

22 June
Corn Exchange, High East Street,
DORCHESTER, DT1 1HF. 8pm. £14 /
£12. 01305 266926 /
www.dorchesterarts.org.uk. "Original
blues songs and seriously reinvigorated
classics."



DOLLY WOULD

"Sh!t Theatre love Dolly Parton. And their bold new show is about the
country legend, cloning, branding, immortality and death."

8 June: Lighthouse, Kingland Road, POOLE, BH5 1UG. 8pm. 01202
280000 / www.lighthousepoole.co.uk.



'SPANDEX BALLET'

22 June
The Lyric Theatre, BRIDPORT, DT6 3LX.
7.30pm. 01308 424901. "Part
workshop, part comedy act, part
disco celebrating the '80s workout in
all its neon glory. Think high legged
leotards, sweatbands, ankle warmers
and some serious back combing.
Colour, energy and high kicks are all
you need to clear that hazy head and
motivate yourself for more partying."

HATFUL OF RAIN

22 June
Lighthouse, Kingland Road, POOLE,
BH5 1UG. 8pm. 01202 280000.
"Contemporary folk."

ROB DEERING

23 June
Lighthouse, Kingland Road, POOLE,
BH5 1UG. 8pm. 01202 280000 /
www.lighthousepoole.co.uk. Comedy.

'HE AIN'T HEAVY'

24 June
Corn Exchange, High East Street,
DORCHESTER, DT1 1HF. 7.30pm. £13 /
£11. www.dorchesterarts.org.uk.
"Performer Grania Pickard tells the
story of growing up with her disabled
autistic brother Sean using physical
theatre, aerial circus, audience
interaction and storytelling. Through
puppetry, the audience see how Sean
walks, talks and interacts with the world
and how his unique take on life has
shaped and influenced Grania."

TASHI LHUNPO MONKS

24 June
Springhead Gardens, FONTMELL
MAGNA, SP7 0PF. 7.30pm. £10 / £7.
01747 811853 / www.artsreach.co.uk.

KEVIN BRIDGES: 'WORK IN PROGRESS'

25 June
Octagon Theatre, Hendford, YEOVIL,
BA21 1UX. 7.30pm. £18.50. 01935
422884 / www.octagon-theatre.co.uk.

GIOVANNI PERNICE

25 June
Westlands Entertainment Venue,
Westbourne Close, YEOVIL, BA20 2DD.
7.30pm. £50 / £32 / £27. 01935 422884
/ www.westlandsyeovil.co.uk. "Strictly
Come Dancing finalist Giovanni Pernice
returns to the stage with a bang."

'JAMBHALA'

26 June
Lighthouse, Kingland Road, POOLE,
BH5 1UG. 7pm. 01202 280000. "A
light-hearted, multi-sensory and
interactive family show."

'WHISKY GALORE'

26 - 30 June
Salisbury Playhouse, Malthouse Lane,
SALISBURY, SP2 7RA. 7.30pm. £27 /
£12. www.salisburyplayhouse.com.

LAUGHING BOY COMEDY CLUB

28 June
Westlands Entertainment Venue,
Westbourne Close, YEOVIL, BA20 2DD.
8pm. £10 / £9. 01935 422884.

MANOS PUERTAS TRIO

29 June
Pound Arts Centre, Pound Pill,
CORSHAM, SN13 9HX. 8pm. Free
entry. www.poundarts.org.uk. Jazz.

NEW HARDY PLAYERS: 'THE TRUMPET MAJOR'

29 June
Max Gate, Alington Avenue,
DORCHESTER, DT1 2FN. 7.30pm.
£12.50 / £6.50. 01305 266926 /
www.dorchesterarts.org.uk. "The New
Hardy Players return with a spectacular
Georgian entertainment in evocative
outdoor locations in Dorset. Bring
along a picnic and enjoy Thomas
Hardy's historical romance in a colourful
new production directed by Tim
Laycock with Penny Levick."

NEW HARDY PLAYERS: 'THE TRUMPET MAJOR'

30 June
Watercombe House, near
OWERMOIGNE, Dorchester, DT2 8HJ.
2.30pm. £12.50 / £6.50. 01305 266926.
See 29 June.

LITTLE MEN

30 June
Pound Arts Centre, Pound Pill,
CORSHAM, SN13 9HX. 7.30pm. £12 /
£10. www.poundarts.org.uk.

Every job starts with a blank canvas.

At AztecMedia we have over 25 years experience in design and
marketing. So whether you're an independent artist needing
a website or a large venue looking for promotional material,
everything we do is tailored to suit who you are.

aztecmedia
born to be creative®

01935 477 073 • AztecMedia.eu



CLASSIFIEDS

OPPORTUNITIES

● Calling all artists! Evolver Prize 2018: Artists, photographers and designers are invited to submit actual cover size 2D work in any media for selection for the front cover of Evolver 106 (July and August 2018 issue) plus £1,000. The judges will also select an additional 49 works for a Top 50 Exhibition at ACE Arts, Somerton (28 July - 25 August) and publication in Evolver 106. Deadline Thursday 31 May 2018. See page 27 or www.evolver.org.uk/evolver-prize for further details and entry form.

● Sherborne ArtsLink is seeking freelance arts for health facilitators and support workers to help deliver its ArtsLink Fizz! wellbeing project. Practitioners / tutors and support staff required with prior practice of working with adults experiencing memory loss or groups with emotional needs. www.sherborneartslink.org.uk. Email CV to artslinkfizz@gmail.com.

● Call for Artists. Clifton Arts Club 109th Summer Open Exhibition. Deadline for submissions 22 July. Handing in 29 July. For details and to download application form: www.cliftonartsclub.co.uk/open-exhibition.html

● One Craft Gallery is a successful co-operative in Shepton Mallet. We are looking for new members to join our friendly team. Look at our website www.onecraftgallery.co.uk or pop in and see us. We would love to hear from you! Please apply to Kerrie McNeil: 01749 343777 / mcneil.kkas@blueyonder.co.uk.

WORKSHOPS AND COURSES

● Life Drawing, Exeter. Untutored sessions, Sundays 10am - 12.30pm. £8. 01392 273744 / adrian@afgw Wyatt.plus.com.

● Stable Arts organises a range of art and craft courses in the Victorian stable block set in the beautiful grounds of Nynehead Court, Wellington. Saturday 2nd June Book Making with Pauline Pearce and Saturday 16th June En Plein Air in the grounds of Nynehead with Caroline McMillan-Davey. For more information about these courses and others visit Stable Arts website at www.stablearts.co.uk or contact Mary on 01458 251640.

● Printmaking Summer School at For Every Cloud, Langport - 16th, 17th, 18th, 19th and 20th July 2018, 10am - 4pm. Come and enjoy a week of printmaking techniques in a small friendly group. Workshops covered: Lino, Etching with Perspex, Screen Printing, Cardboard Etching & Collagraph. £260pp, individual workshops £65pp. For more information visit www.forevercloud.co.uk or call 01458 251475.

● Textile Art and Embroidery Tuition with Jenni Cadman. I offer Tuition in Free-Machine Embroidery to all abilities from complete beginners to the more advanced. So whether you have no experience in the technique or would like to refresh and extend your existing skills I can help. Good guidance and advice with projects, finding new directions, portfolio assessments and lots of inspiration given on a one-to-one basis. Please visit my new website for further details: www.jennicadman.co.uk

● BH Art Life Drawing And Portraiture Classes in and around the BH area. Regular and all day sessions available. Life Drawing is tutored, however you are welcome to attend without instruction. <https://trishvisualarts.weebly.com/> <https://www.facebook.com/bhartlifiedrawingandportraiture/>. Contact Trish (Life Drawing) 0775 400 5875 or Lilly (Portrait) 0780 4020 735.

● Learn to Draw: Poundbury. Every Tuesday and Saturday, 5 Burraton Yard, Poundbury, Dorchester, DT1 3GR. 11am - 1pm and 2pm - 4pm. Learn to draw and sketch with Mark Page (fine artist), fully tutored sessions working with graphite, ink and charcoal. All levels, beginners to advanced. Small groups max 8. Booking essential. £18 each two hour session. 07977 555109 / www.markpageartworks.com.

● Flux'n'Flame Jewellery School: Now one of the largest independent jewellery schools in the UK offering an ever expanding range of traditional jewellery making courses from 1 day tasters, weekend courses and weekly classes to a 6 day Summer School and specialist masterclasses. Taught by professional jewellery designers and set in a beautiful purpose built workshop in the heart of the Dorset countryside near Milton Abbas. www.fluxnflame.co.uk. For more info please call Jesa on 01258 881690 / 07785 550771.

● BH Art Life Drawing and Portraiture all day tutored life drawing session, Saturday 5th May 2018, 10 - 4 at Parkstone Baptist Church, Poole. £40 to include materials. £10 deposit required to secure a place. Contact Trish: 0775 400 5875. <https://trishvisualarts.weebly.com/>

● Drink & Draw: Wareham. Every Thursday and Friday, Purbeck Artisan Yard, Church Street, Wareham, BH20 4NP. Thursday 7 - 9pm and Friday 10.30am - 12.30pm. Learn to draw and sketch with Mark Page (fine artist), fully tutored sessions working with graphite, ink and charcoal. All levels, beginners to advanced. Small groups max 10. Booking essential. £15 each two hour session. 07977 555109 / www.markpageartworks.com.

● Printmaking For Beginners. 6 week courses and weekend workshops available. Learn basic printmaking techniques including linocut, collagraph and drypoint etching, in a relaxed, friendly setting, Christchurch, Dorset. For more information visit www.artofstartingout.co.uk or call 07969 436921.

MISCELLANEOUS

● Putting on a variety show or other entertainment? I am offering tried-and-tested comedy material - sketches, monologues, mini-dramas, mini-operas, mini-pantos and comic song lyrics. All free, no postage as I'll email your requests to you. To see the list of items, please visit the 'free comedy material' page at www.johnbarclayink.com.

● Mezzanine studio space, Colyton, Devon, available from June. Suitable quiet space for printmaker, jeweller or crafting small items. Enquiries: info@aliberbert.co.uk / 07845 395722.

● Experienced Life Model, own transport, 20 mile radius from Glastonbury, £15/hour. Jo Waterworth 01458 834405 or jowaterworth23@hotmail.co.uk.
● Rubenesque Life Model. Available in Bournemouth and Poole Area. Contact Lilly 0780 4020 735 <https://www.lillyartistmodel.com/>
● Commissioned portraits in oil. All aspects of portraiture and life paintings undertaken. City & Guilds in Art. Email: gsamdaliri@hotmail.co.uk. www.garysamdaliri.co.uk.

● Bench space and equipment for hire in glass studio, Wellington, Somerset. Two glass kilns, cold working tools and equipment available. Please ring 01823 617262 for details or email info@skylarkglass.co.uk.

● To achieve the best price for your work you need the highest quality prints. As an award-winning fine art printer we can help you achieve that goal. All prints come with a Certificate of Authenticity and we are the only ArtSure accredited printer in the region. Call John Roland on 01747 852221. www.salt-of-the-earth.biz.

● Clairvoyant. Established 25 years. Emma Howe. Spiritual solutions, etc. Phone 01458 251951.

● Posture with Attitude, Sophie Larter, Life Model. Experienced and professional. Based in Somerset, own transport, will travel, Devon / Dorset and beyond. Contact: 07531 703168 or sophie.ann.larter@gmail.com.
● Affordable website design, help with social media, Mail Chimp newsletters and Wix websites. DT9 6LA. Anne King: ipadery@icloud.com / ipadery.co.uk / 01935 872470.

FREE EVOLVER LISTINGS

Exhibition and performance listings should be emailed to: listings@evolver.org.uk

Please supply information (in upper and lower case) in the following order: Event. Date(s). Venue, address (including postcode). Times. Admission fee (if any). Contact number / website. Up to 30 words about the event.

EVOLVER CLASSIFIEDS

20p per word • Add £5 for BOX • Add £10 for RED BOX

1) Email to classifieds@evolver.org.uk

2) Send cheque (payable to 'Evolver Media') to: EVOLVER CLASSIFIEDS, EVOLVER MEDIA, 8 BUCKLAND ROAD, PEN MILL TRADING ESTATE, YEOVIL, SOMERSET BA21 5EA

SUBSCRIBE TO EVOLVER

£24 (6 issues starting with EVOLVER 106 (July and August 2018 issue))

NAME

ADDRESS

POSTCODE

Send cheque (payable to 'Evolver Media') to:
EVOLVER MEDIA, 8 BUCKLAND ROAD, PEN MILL TRADING ESTATE,
YEOVIL, SOMERSET BA21 5EA

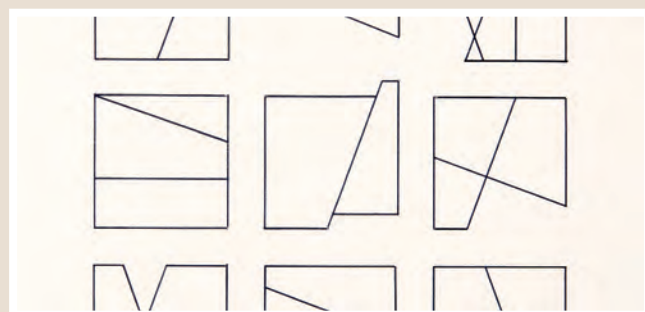
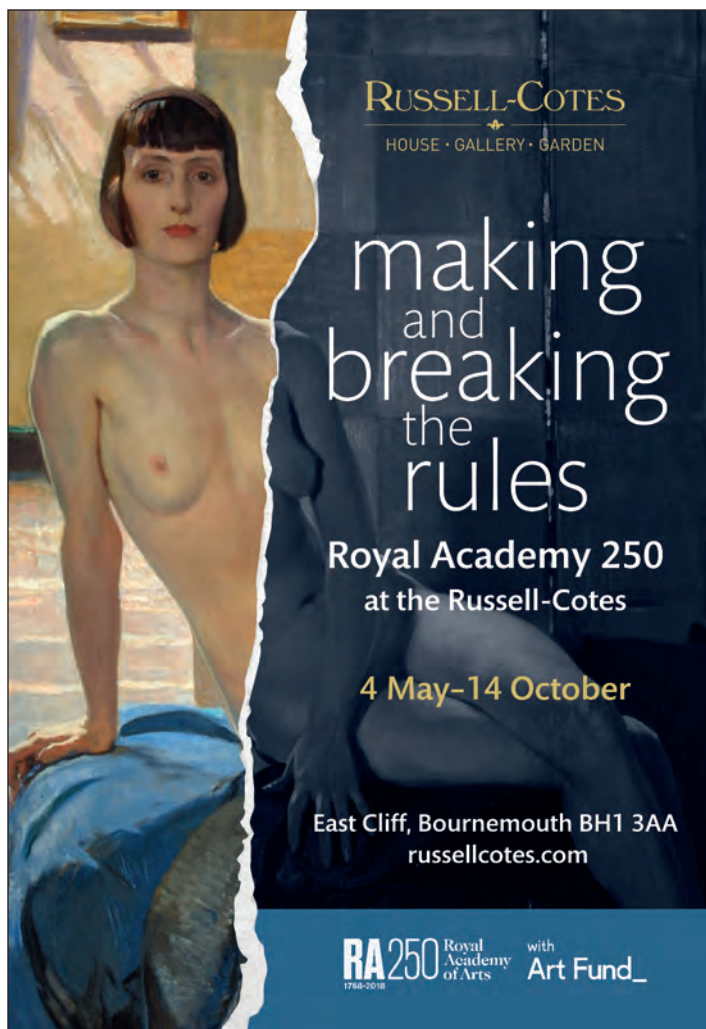


EXHIBIT A

Artists and photographers are invited to submit work for consideration as next issue's page 3 EXHIBIT A by emailing images to: simon@evolver.org.uk



Create your creative career with Culture+

Culture+ is a programme tailored for the arts and culture community that offers free business training, advice and support as well as networking opportunities with business and tourism industries throughout Dorset including Bournemouth and Poole

Working with schools as an artist or creative

Thursday 3 May, 12:30 - 17:00, Bournemouth

Culture³ = Art is Digital? Conversations and networking

Friday 4 May, 12:30 - 15:00

Culture³ = Art = Change? Conversations and networking

Saturday 5 May, 13:00 - 16:00

Make your own website: A step-by-step course for artists and makers

Tuesday 8 and 22 May, 13:30 - 15:30, Blandford Forum

Sales channels for visual artists and makers

Thursday 10 May, 09:30 - 16:00

Customer care: Enhancing the visitor experience

Friday 11 May, 09:00 - 13:00, Dorchester

Project ideas and funding: Landscape and tactics

Tue 15 May, 18:00 - 21:00, Bridport

Business planning for artists and creatives

Thursday 17 May, 09:30 - 16:00, Lyme Regis

How to: Create crowdfunding, fundraising and social impact videos

Monday 21 May, 10:00 - 16:00, Sturminster Newton

Enterprising your mission: Options for diversification

Thursday 24 May, 10:30 - 17:00, Bournemouth

Make your own website: A step-by-step course for artists and makers

Tuesday 5 Jun, 13:30 - 15:30, Bridport

Social media strategy for creatives: Intermediate to advanced

Thursday 7 June, 09:00 - 13:00, Bournemouth

Customer care: Enhancing the visitor experience

Friday 8 June, 09:00 - 13:00, Bournemouth

How to: Make your own promotional video

Tuesday 12 June, 09:30 - 16:00, Durlston

Sign up to any one of our free workshops and events across Dorset via: www.theartsdevelopmentcompany.org.uk or call any of the Culture+ team on: **01305 228528** to find out more

Funded by:



A partner in:



EVOLVER SPONSORS AND OUTLETS



EVOLVER IS AVAILABLE FREE AT THE FOLLOWING WESSEX OUTLETS:

ABBOTSBURY: Dandel Gallery. AXMINSTER: Axminster Arts Café, Sublyme Café. BATH: Action for Hearing Loss, Bath Artists' Studios, Beaux Arts, David Simon Gallery, Edgar Modern Gallery, Fringe Arts, Holburne Museum of Art, Imagination Gallery, Michael Tippett Centre, Rostra Gallery, University of Bath, Victoria Art Gallery. BERE REGIS: Cyril Wood Court. BLANDFORD: Bryanston Arts Centre, Forum Café, Forum Framers. BOURNEMOUTH: All Fired Up, Artcetera, Big Picture, Flux Art Supplies, Miramar Hotel, Pavilion Dance, Royal Bath Hotel, Russell-Cotes Museum & Art Gallery. BRADFORD ON AVON: Wiltshire Music Centre. BRIDGWATER: Bridgwater Arts Centre, Engine Room. BRIDPORT: Beach & Barnicott, Bridport Arts Centre, Bridport Music, The Bull Hotel, Lyric Theatre, St Michael's Studios. BRISTOL: Arnolfini, Bocabar, Bristol Fine Art, Bristol Museum & Art Gallery, Colston Hall, Create Centre, Folk House, Grant Bradley Gallery, Jamaica Street Artists, Lime Tree Gallery, PRSC Gallery, Rise, RWA, Spike Island, St George's, Tobacco Factory, Trinity Centre, UWE, Watershed. BROADWINDSOR: Craft & Design Centre. BRUTON: Bruton Art Factory, Bruton Castle, At The Chapel, Hauser and Wirth. BUDLEIGH SALTERTON: Brook Gallery. BURNHAM ON SEA: Princess Theatre & Arts Centre, Seabreeze Gallery. CASTLE CARY: Bailey Hill Bookshop, Trowbridge Gallery. CHARD: Barleymow's, The Gallery, Hornsbury Mill Hotel. CHEDDON FITZPAINE: Hestercombe Gallery. CHRISTCHURCH: Hatch Gallery, Hayloft Gallery, Red House Museum, Regent Centre. CLEVEDON: Fizz Gallery. CONGRESBURY: Church House Designs. CORFE CASTLE: Boilerhouse Gallery, Gallery 41, Morton House Hotel. CORSHAM: Pound Arts. CREWKERNE: Phoenix Books. CROWCOMBE: Halsway Manor. CULMSTOCK: The Strand Stores. DEVIZES: Bluestone Gallery, St John's Art & Deco. DORCHESTER: Artsreach, Dorchester Arts, Duke's, Dorset County Museum, Frank Herring & Sons, Gallery on The Square. EAST LAMBROOK: East Lambrook Manor Gardens. EXETER: Bike Shed Theatre, The Cavern, Corn Exchange, Exeter College, Phoenix Arts Centre, The Real Food Store, Southgate

Gallery, SpaceX Gallery, Uearth. FROME: Black Swan Arts, Cheese and Grain, Fiat Lux, Merlin Theatre, Mount, Rook Lane Arts. GILLINGHAM: The Idea Works, Slade Centre. GLASTONBURY: Abbey Muse Gallery, Bocabar, Glastonbury Galleries, Market House Hotel, Red Brick Building. HEMYOCK: Healthy Living Centre. HIGHCLIFFE: In The Frame. HONITON: The Beehive, Hybrid Gallery, Strummer Pink, Thelma Hulbert Gallery. ILMINSTER: Dillington House, Ilminster Arts Centre. LANGPORT: 4 Every Cloud, Art Tea Zen, Shakspeare Glass, Somerset Art Works, Somerset Levels Baskets. LANGTON MATRAVERS: Burngate Stone Carving Centre. LYME REGIS: Blue Lias, Coombe Street Gallery, Fine Art Framing, Marine Theatre, Studio 19, Town Mill. MARLBOROUGH: Framemakers. MARTOCK: 303 Gallery, Martock Gallery, The Hollies Hotel. MERE: Beaumont Gallery. MILDENHALL: Rabley Contemporary Drawing Centre. MILTON ABBAS: Flux'n'Flame. MINEHEAD: Courtyard Framing, Leo Davey Gallery, Regal Theatre. MORCOMBELAKE: Artwave West. MUCHELNEY: John Leach Gallery. NORTH CURRY: Community Café. OTTERTON: Otterton Mill. POOLE: Arts University Bournemouth, Bournemouth University Atrium Gallery, Guildhall Gallery, Josephine Wall Gallery, Lighthouse, The Gallery Upstairs, Poole Museum. PORLOCK: Churchgate Gallery, Melody Art. PORTISHEAD: Tinca Gallery. PORTLAND: White Stones. SALISBURY: City Hall, Fisherton Mill, Framemakers, Salisbury Arts Centre, Salisbury Playhouse, Studio 53, Wiltshire Gallery, Young Gallery. SEATON: Arts Café. SEAVINGTON: Village Shop. SHAFTESBURY: The Cygnet, Grosvenor Hotel, Salt of the Earth, Shaftesbury Arts Centre. SHEPTON MALLET: My Coffee Stop, One Craft Gallery. SHERBORNE: Jerram Gallery, New Digby Hall, Old Barn Framing Gallery, Winstone's. SIDCOT: Sidcot Arts Centre. SIDMOUTH: East Devon Art Academy, Flo and Us, Kennaway House, Winstone's. SIXPENNY HANDLEY: The Walnut Tree. SOMERTON: ACE Arts, Gifted Company & Gallery Coffee Shop. SOUTHBOURNE: Coastal Creatives. SOUTH CADBURY: Chapel Cross Tea Rooms. SOUTH PETHERTON: David Hall, Provender Cafe. STALBRIDGE: Guggleton Farm, Dike & Sons.

STOKE ST GREGORY: Willows & Wetlands Centre. STOURHEAD: First View Gallery. STREET: Millfield School Atkinson Gallery, Strode Theatre. STURMINSTER NEWTON: The Exchange, Poet's Corner, Wessex Photographic. SWANAGE: Durlston Castle, L'Artishe, Little Green Gallery, Mowlem Theatre, Mulberry Bush Gallery, Quarr Gallery, Sansom Gallery, Saul 2 Gallery. TAUNTON: Brewhouse, Creative Innovation Centre, Ginger Fig, Harlequin Gallery, Jane Amour, Mount Somerset Hotel, Queen's College, Shakspeare Glass, Somerset College of Arts & Technology, Tacchi-Morris Arts Centre. TINCLETON: Tincleton Gallery. TIVERTON: Lantic Gallery. TROWBRIDGE: Arc Theatre, The Lamb. VERWOOD: The Hub. WAREHAM: Creative Gallery, Priory Hotel, Rex Cinema. WATCHET: Contains Art. WELLS: A2 Gallery, Good Earth, Heritage Courtyard Studios, Somerset Guild of Craftsmen Gallery and Shop. WEST BAY: Sladers Yard. WEST COKER: Lanes, Old School Room. WESTHAY: Somerset Crafts. WESTON-SUPER-MARE: Frame Station, Playhouse, Weston College. WEYMOUTH: Cackleberry Frames, Gallery on The Wey, Leighton Gallery, Weymouth College. WIMBORNE: Square Records, Tivoli Theatre, Walford Mill Craft Centre. WOODBURY: Woodbury Studio Gallery. WORTON: Old Mill Gallery. WRINGTON: Barleywood Walled Garden Café. YEOVIL: Acorn Records, Octagon Theatre, Yeovil College. YETMINSTER: Old School Gallery.

Plus selected TOURIST INFORMATION CENTRES and LIBRARIES throughout Wessex.

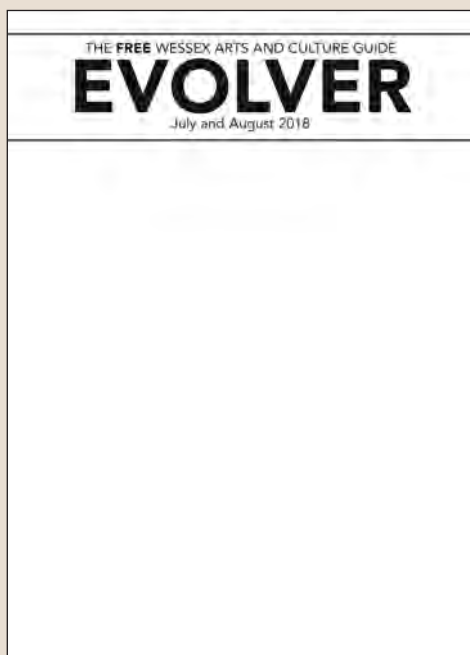
EVOLVER IS SPONSORED BY:

ACE Arts • Acoustic Distribution • Activate The Arts Development Company Atkinson Gallery • Aztec Media • B-Side Black Swan Arts • Boilerhouse Gallery Bridport Arts Centre • The Creative Gallery Dorchester Arts • Dorset Visual Arts Exeter School of Art • Lighthouse • Mount Octagon Theatre • Sladers Yard Somerset Art Works • Stephens & George St Michael's Studios • Thelma Hulbert Gallery Tincleton Gallery • Walford Mill Crafts



EVOLVER PRIZE 2018

FIRST PRIZE: EVOLVER 106 FRONT COVER + £1,000



ARTISTS, PHOTOGRAPHERS and DESIGNERS are invited to submit actual cover size 2D work in any media for selection for the **FRONT COVER OF EVOLVER 106** (July and August 2018 issue) + **£1,000**

The judges will also select an additional 49 WORKS for a **TOP 50 EXHIBITION** at ACE ARTS, Somerton (28 July - 25 August) and publication in EVOLVER 106

JUDGES:

Simon Barber (Editor, Evolver)

Nina Gronw-Lewis (Curator, ACE Arts)

Anita Taylor (Artist and Executive Dean, Bath School of Art & Design)

Anthony Wardle (Co-Founder, Fresh: Art Fair)

DEADLINE: THURSDAY 31 MAY 2018

Further information:

www.evolver.org.uk/evolverprize

prize@evolver.org.uk



EVOLVER

| |
|-----------|
| NAME |
| ADDRESS |
| |
| |
| POSTCODE |
| TELEPHONE |
| EMAIL |

EVOLVER PRIZE 2018 ENTRY FORM

| TITLE OF WORK | MEDIUM | SELLING PRICE * |
|---------------|--------|-----------------|
| 1 | | |
| 2 | | |
| 3 | | |

I ENCLOSE MY SUBMISSION FEE (£10 PER WORK)

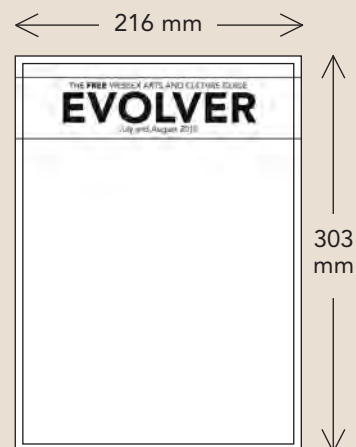
£

* EVOLVER will take a 40% commission from this price if the work is exhibited and sold

Send ARTWORK + CHEQUE (payable to 'EVOLVER MEDIA') + SAE FOR RETURN OF ARTWORK to:
EVOLVER PRIZE 2018, EVOLVER MEDIA, 8 BUCKLAND ROAD, PEN MILL TRADING ESTATE, YEOVIL,
SOMERSET BA21 5EA

DEADLINE: THURSDAY 31 MAY 2018

☐ Please tick box if you do not wish to be added to the Evolver and ACE Arts mailing lists



SUBMISSIONS

- The image size of all submitted work must measure 216 x 303 mm (the actual size of Evolver's front cover plus an extra 3 mm all round)
- The work should be an unframed original artwork or high quality print that can be sold at the exhibition
- Up to 3 works may be submitted
- A submission fee of £10 per work will be charged
- Please also supply a stamped addressed envelope for return of artwork

PLEASE NOTE

The judges will definitely not be looking for a particular style of work
The work submitted should be anything that you believe would make a great front cover

DORSET
ART
WEEKS

26 MAY – 10 JUNE 2018
OPEN STUDIOS, EXHIBITIONS, EVENTS

DORSET VISUAL ARTS