

THE **FREE** WESSEX ARTS AND CULTURE GUIDE

# EVOLVER

September and October 2018





'Miner 2' 1963

# Anthony Currell

3 September – 13 October 2018

**Atkinson GALLERY**



**MILLFIELD**

Millfield, Street, Somerset BA16 0YD • Monday - Saturday 9.30am - 5pm  
[www.atkinsongallery.co.uk](http://www.atkinsongallery.co.uk) • Tel: 01458 444322 / 444176





# EVOLVER 107

## EXHIBIT A



### ANGELA CHARLES: 'RISKING IT AT WEST BAY'

Acrylic and coloured pencil on aluminium panel, 51 x 51 cm

ARTIST'S STATEMENT: "I created this work after a walk along Chesil Beach at West Bay, where warnings of unstable cliffs dare you to walk on the beach beneath them."

**SOMERSET OPEN STUDIOS VENUE 92**

**15 - 30 September:** The Tower House, Mount Pleasant, CREWKERNE, TA18 7AH. Thursday - Sunday 11am - 5pm.  
angelacharles.com.

#### EVOLVER

THE WESSEX ARTS AND CULTURE GUIDE

Editor SIMON BARBER

Assisted by SUZY RUSHBROOK

Evolver Writers

FIONA ROBINSON [www.fionarobinson.com](http://www.fionarobinson.com)

Graphic Design SIMON BARBER

Website OLIVER CONINGHAM at AZTEC MEDIA

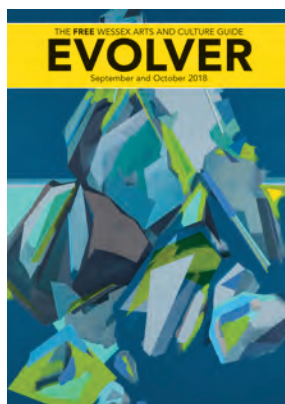
Front Cover

GEORGINA TOWLER 'ZEAL'

(Somerset Open Studios Venue 43)

#### EVOLVER MEDIA

8 BUCKLAND ROAD, PEN MILL TRADING ESTATE,  
YEOVIL, SOMERSET BA21 5EA



Email [simon@evolver.org.uk](mailto:simon@evolver.org.uk)

Telephone 01935 808441

Website [www.evolver.org.uk](http://www.evolver.org.uk)

Twitter @SimonEvolver

Facebook [www.facebook.com/EvolverMagazine](http://www.facebook.com/EvolverMagazine)

Published by EVOLVER MEDIA LIMITED

Pre-Press by FLAYDEMOUSE

01935 479453 / [www.flaydemouse.com](http://www.flaydemouse.com)

Printed by STEPHENS & GEORGE

Distributed by ACOUSTIC

07456 009377 / [everett190@btinternet.com](mailto:everett190@btinternet.com)

DEADLINE FOR EVOLVER 108

November and December 2018

SUNDAY 7 OCTOBER

# VISUAL ARTS

September and October 2018



CAITLIN AKERS 'REMEMBER THE PORTLAND BOIS' (2018)

## B-SIDE

B-side, the multimedia arts festival featuring innovative contemporary art across Dorset's Isle of Portland is returning this September with an ambitious programme of artists, creating unique pieces of work which will be scattered across the island's magical landscape, echoing the festival's ethos of entertaining, informing and provoking debate with experiences and art.

B-side works in harmony with the history, geology and character of Portland, and visitors are treated to immersive, stunning and surprising experiences which leave a lasting impression.

The family-friendly entertainment of *The Portland Promettes*, led by Miss High Leg Kick, will be roving across the island, popping up in various locations to amuse and inform with their synchronised dance pieces, audience interaction and comedy.

Laura Hope will be creating the roar of thousands of fans at *The Portland Stadium Bowl*. Using sound technology, she'll conjure up the stuff of dreams for any young footballer, lucky visitors will be able to experience being cheered on by the crowd, when in reality there are only terraces of trees.

The 19th Century gun placements of the High Angle Battery, which faced the sea off Portland to warn away invaders, were the inspiration for Raphael Daden's *What Would You Fight For?* an installation using illuminated texts which will explore why humanity always feels the need to defend and attack.

To prompt audiences to think about the increasingly dangerous issue of air pollution, London artist Leni Dothan will create *The Portland Stone Rehabilitation Centre*, a haven for specially made sculptures of pollutant-reactive material from the capital who are being brought down to Dorset for some much-needed rehab. Visitors are invited to watch as they transform in the clean air, before their eyes over the festival period.

Tapping into b-side's inventive, quirky side, Jon Borez has dreamt up *The Portland Lookalike Agency* as a response to the widely-accepted notion that becoming a celebrity is a short cut to riches. The 'stars' of this agency, drawn from the real residents of Portland, will become celebrity lookalikes for the festival.

*The Portland Office for Imaginary History* which proved so popular in 2016, will return to take visitors on a tour of mythical locations, people and non-existent sites of real interest, ticket holders can join them to learn about the fictional Tophillians and Underhillians and plenty more.

The tales of *The Portland Bois*, a local gang enshrined in Dorset folklore, will be brought to life by Caitlin Akers, who is using the story of the gang to create a series of posters and flyers which will wryly examine, from an outsider's point of view, the strangeness of growing up in a place unlike anywhere else in the UK.

A group of students from Budmouth College worked with Bootworks Theatre and produced a piece of theatre called *We Could Be Heroes*. The show explores the modern fascination with the idea of having a hero, while simultaneously looking at the evil lurking in the world today.

Sandy Kirkby, Festival Producer explains: "This year the programme is more diverse than ever, with light installations, sound and dance all intertwined with Portland's unique history and mythology. 2018 is set to be b-side's biggest year yet and we're inviting people to head down to explore the magic."

These are just a snapshot of the huge programme coming to b-side this year, with plenty of other free and ticketed shows, tours and experiences taking place across Portland.

**8 - 16 September: ISLE OF PORTLAND, Dorset.** [b-side.org.uk](http://b-side.org.uk).



# VISUAL ARTS

## 'APPEETO: PUBLIC ART AND PRIVATE WORLDS'

**Until 1 September**

The Shippon Gallery, Hook Farm, Chardstock, AXMINSTER, EX13 7DD. Friday 2 - 5pm. 01460 220021 / theshippongalleries.com.

## 'BEST OF THE SOUTH WEST'

**Until 1 September**

The Pound, Pound Pill, CORSHAM, SN13 9HX. Monday - Saturday 10am - 6pm. 01249 701628 / poundarts.org.uk. "A diverse exhibition presenting emerging talent within the region."

## BOILERHOUSE GALLERY SUMMER SHOW

**Until 1 September**

Boilerhouse Gallery, Sandy Hill Lane, CORFE CASTLE, BH20 5JF. Monday - Saturday 10am - 5pm. 01929 481073 / boilerhousegallery.co.uk. "A broad spectrum of original work will be on show, featuring work by the 10 resident gallery artists as well as several invited guests. There'll be plenty to see with disciplines including glass, ceramics, stone, photography, jewellery, painting, mosaic, textiles, and sculpture."

## BRIDPORT OPEN STUDIOS: 'TASTER'

**Until 1 September**

Bridport Arts Centre, South Street, BRIDPORT, DT6 3NR. Tuesday - Saturday 10am - 4pm. 01308 424204 / bridportopenstudios.co.uk. "A handpicked selection of artists, designers and makers who will be participating in Bridport & West Dorset Open Studios, 8 - 16 September."



## THE ARBOREALISTS AND GUESTS

**Until 2 September**

Long Gallery, Black Swan Arts, 2 Bridge Street, FROME, BA11 1BB. Monday - Saturday 10am - 4pm (plus Sunday 2 September 10am - 3pm for The Frome Independent market). £5 / £3. 01373 473980 / blackswan.org.uk. "United by their subject, the Arborealists employ an extraordinary diverse range of working practices: scale, medium, philosophy, style and technique."

Above: Paul Finn



LUKE ELWES 'GANGA 7' (75 x 80 cm, 2018)

## CURRENTS

"New paintings by Julian Bailey, Luke Elwes, Vanessa Gardiner, and Janette Kerr, four painters who look at water in different ways."

**22 September - 11 November:** Sladers Yard, WEST BAY, Bridport, DT6 4EL. Monday - Saturday 10am - 4pm, Sunday and Bank Holiday 12noon - 4pm. [www.sladersyard.co.uk](http://www.sladersyard.co.uk).

## 'PROCESSIONS: TWO BANNERS, ONE VOICE'

**Until 2 September**

Somerset Rural Life Museum, Chilkwell Street, GLASTONBURY, BA6 8DB. Tuesday - Sunday 10am - 5pm. £6 / £2.75. [swheritage.org.uk](http://swheritage.org.uk). "Exhibition marking the centenary of British women being given the right to vote."

## KAFFE FASSETT AND CANDACE BAHOUTH: 'A CELEBRATION OF FLOWERS'

**Until 2 September**

Victoria Art Gallery, Bridge Street, BATH, BA2 4AT. [victoriagal.org.uk](http://victoriagal.org.uk). "Internationally renowned colour expert and fabric designer Kaffe Fasset has been associated with Bath

since the 1960s when he moved to England from San Francisco. Inspired by flowers all his life, Fasset will demonstrate his full creative flair in this stunning new exhibition. With a bespoke dazzling colour scheme to match, the installation will transform the Gallery using 40 of his vibrant coloured quilts and needlepoints."



# HENRY LAMB OUT OF THE SHADOWS

Last chance to see . . .  
26 May - 30 September 2018

65 The Close, Salisbury, Wiltshire SP1 2EN  
The Salisbury Museum is an independent charity 289850

The SALISBURY  
**MUSEUM**  
[www.salisburymuseum.org.uk](http://www.salisburymuseum.org.uk)

Henry Lamb self portrait 1932  
In partnership  
with Poole Museum



Supported using public funding by  
**ARTS COUNCIL  
ENGLAND**

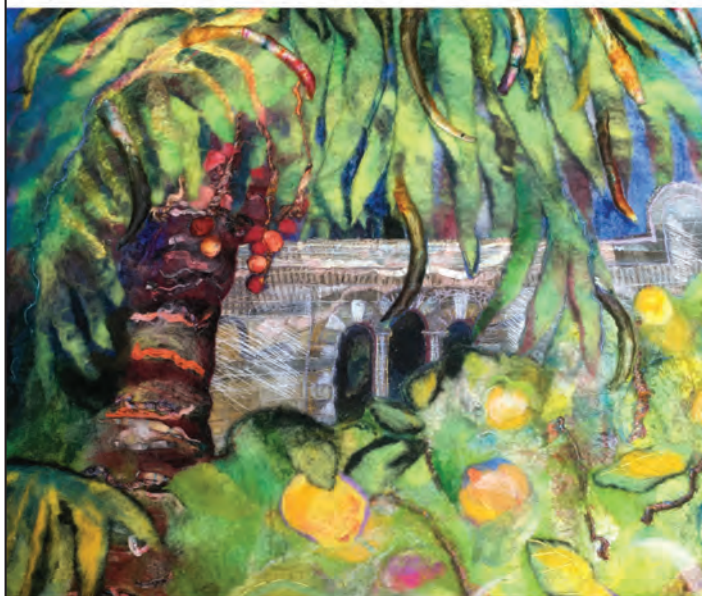
**RA250** Royal  
Academy  
of Arts  
1768-2018

with  
**Art Fund**

This project, with Art Fund support, forms part of  
RA250 UK: Exhibitions and events around the UK  
to celebrate 250 years of the Royal Academy of Arts.



# JOHN LEACH GALLERY



Elizabeth Leach

## BRUCE BOND & ELIZABETH LEACH

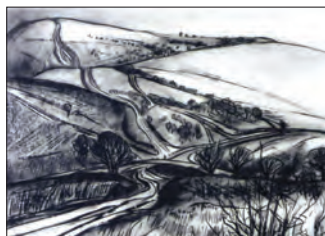
1 September - 30 October 2018

01458 250 324

Monday - Saturday, 9-1, 2-5

Muchelney, Nr Langport TA10 0DW

[www.johnleachpottery.co.uk](http://www.johnleachpottery.co.uk)



## LANDSCAPE and SCRAPYARD

23 September - 6 October

Work by Christine Hillier from a diversity of landscapes and their ancient tracks to the man-made construct of the scrapyard

Wall Space, Trelawne, 2 Station Road, Crewkerne, TA18 8AJ

Opening times: Sunday 23rd to Sunday 30th 11am - 4pm

Monday 1st to Saturday 6th by appointment only

Tel 01460 78157 / mob 07531 703168 and 07715 447671



## Contemporary Interiors in Wood

5 rooms full of unique wood work from over 200 craftsmen working in the UK.

Ranging from kitchenware to one-off jewellery boxes and furniture.

Coffee shop and small children's play area.



Rodden Row, Abbotsbury, DT3 4JL  
[www.danselgallery.co.uk](http://www.danselgallery.co.uk)

01305 871515  
Open 10am - 5.30pm every day

## VISUAL ARTS



'ULTRAVIOLET'

(Skin, fabric, solar radiation, archive photograph on rag paper, pastel, 50 x 35 cm, 2017)

## DENISE WEBBER: ULTRAVIOLET

"The presence of the human body, its physicality and its frailty, provides the unifying thread in this selection of Denise Webber's recent photographic series and drawings. The work is seen alongside her earlier key video piece, *Clay*, which is based upon rarely seen nineteenth century still photographs from Eadweard Muybridge's studies of the human figure."

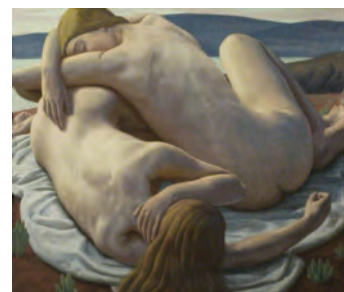
**7 September - 27 October:** Main Gallery, Lighthouse, Kingland Road, POOLE, BH5 1UG. Tuesday - Saturday 10am - 5pm. 01202 280000 / [lighthousepoole.co.uk](http://lighthousepoole.co.uk) / [denisewebber.co.uk](http://denisewebber.co.uk).

## ROBERT HURDLE

**Until 3 September**  
Royal West of England Academy,  
Queen's Road, Clifton, BRISTOL, BS8  
1PX. Tuesday - Saturday 10am -  
5.30pm, Sunday 11am - 5pm. 0117 973  
5129 / [rwa.org.uk](http://rwa.org.uk).

## SIMON BADDELEY

**Until 4 September**  
The Gallery, Shaftesbury Arts Centre,  
11 Bell Street, SHAFTESBURY, SP7  
8AR. 10am - 4pm. 01747 855243.  
Photography.



## 'IN RELATION'

**Until 9 September**  
Royal West of England Academy,  
Queen's Road, Clifton, BRISTOL, BS8  
1PX. Tuesday - Saturday 10am -  
5.30pm, Sunday 11am - 5pm. 0117 973  
5129 / [rwa.org.uk](http://rwa.org.uk). "Work by some of  
Britain's most influential artist couples,  
including Laura and Harold Knight, Dod  
and Ernest Procter, Eric Ravilious and  
Tirzah Garwood, Robert MacBryde and  
Robert Colquhoun, Rose and Roger  
Hilton, Vanessa Bell and Duncan Grant,  
and Ben Nicholson and Barbara  
Hepworth."

Above: Ernest Procter 'The Day's End'

## 'TOGETHERNESS'

**Until 9 September**  
Royal West of England Academy,  
Queen's Road, Clifton, BRISTOL, BS8  
1PX. Tuesday - Saturday 10am -  
5.30pm, Sunday 11am - 5pm. 0117 973  
5129 / [rwa.org.uk](http://rwa.org.uk). "Featuring artistic  
partnerships, like John Wood and Paul  
Harrison, Emma Biggs and Matthew  
Collings, Andy Holden and Steve  
Roggenbuck, this original exhibition  
raises wider questions about group  
dynamics, activism, authorship and  
public participation."



## 'MATERIAL: WOOD'

**Until 9 September**  
Messums Wiltshire, Place Farm, Court  
Street, TISBURY, Salisbury, SP3 6LW.  
Wednesday - Saturday 10am - 5pm,  
Sunday 10am - 4pm. 01747 445042 /  
[messumswiltshire.com](http://messumswiltshire.com). "Artists and  
makers lead a survey of contemporary  
making practices in wood, with a focus  
on chair design."

Above: Lisa Stolz 'CC Series 2'

## 'STILL LIGHT'

**Until 9 September**  
Sladers Yard, WEST BAY, Bridport, DT6  
4EL. Monday - Saturday 10am -  
4.30pm, Sunday and Bank Holiday  
12noon - 4.30pm. 01308 459511 /  
[sladersyard.co.uk](http://sladersyard.co.uk). "Paintings by Alex  
Lowery, ceramics by Jack Doherty, and  
furniture by Petter Southall."



# VISUAL ARTS

## BRENDA JONES: 'IMPROVISATIONS'

Until 11 September

LT Gallery, 1 Orchard Street, WESTON-SUPER-MARE, BS23 1RG. Tuesday, Friday and Saturday 10am - 4pm, Thursday 12noon - 7pm. [ltgallery.com](http://ltgallery.com).

## 'EDGE'

Until 12 September

The Courtyard Gallery, The Town Mill, Mill Lane, LYME REGIS, DT7 3PU. 10.30am - 4.30pm. [townmillarts.co.uk](http://townmillarts.co.uk). "Glass by Celia Goodman and Kathy Collins, pots by Martin Collins, and watercolours by Jasper Jacob."

## 'A QUEST FOR BEAUTY'

Until 15 September

Ilminster Arts Centre, The Meeting House, East Street, ILMINSTER, TA19 0AN. Monday - Friday 9.30am - 4.30pm, Saturday 9.30am - 2.30pm. [themeetinghouse.org.uk](http://themeetinghouse.org.uk). "Paintings and drawings by Siele Boone Drury."

## MARGARET RIORDAN

Until 15 September

The Arts Lounge, Princess Theatre, Princess Street, BURNHAM ON SEA, TA8 1EH. Tuesday to Friday 10am - 3pm, Saturday 10am - 1pm. [princessstheatreandartscentre.co.uk](http://princessstheatreandartscentre.co.uk).

## 'ART EXHIBITION'

Until 20 September

The Hayloft Gallery, 14 Wick Lane, CHRISTCHURCH, BH23 1HX. 10am - 4pm. 01202 428004. "Paintings, textiles, hats and jewellery by local artists Susan Knights, Linda Patterson, Jeanette Law, Pip Muddell, Jane Martin, and Brenda Weeks."



## 'MAKING SPACE'

Until 22 September

Kobi & Teal, 57 Catherine Street, FROME, BA11 1DA. 10am - 4.30pm. 07737 367419 / [kobiandteal.co.uk](http://kobiandteal.co.uk). "Buildings, structures and spaces have been interpreted and referenced by eighteen artists in this diverse, multi-medium exhibition. With varied and distinctive approaches to the subject, this show promises a rich and engaging presentation of work."

Above: Philippa Battye 'Untitled 1'



'MATERIAL CONFLICT 2' (2018)

## HELEN SEAR: PROSPECT REFUGE HAZARD 2

Consisting of works made since 2015 this is Helen Sear's most ambitious exhibition in the UK to date. Her technique is characterised by exploring the crossover between photography and fine art, and focusing on the coexistence of the human, animal, and natural worlds.

Helen Sear has exhibited around the world and was the first female artist selected to represent Cymru yn Fenis / Wales in Venice with a solo exhibition at the 56th Venice Biennale in 2015. Producing high quality, conceptually rigorous work, her current work incorporates photography, sound and video within a sculptural context, exploring the potential for her artwork to activate and elicit feeling.

Sear says: "The photographic / moving image in art practice has never been so diverse or contested, and, with the acceleration of new digital technologies, the function and presence of the image as both material and permeable is an ongoing challenge in the meaning, making and reception of my work."

The title of the exhibition comes from the 1975 book by Jay Appleton, *The Experience of Landscape*, where he developed the prospect-refuge theory of human aesthetics.

**Until 28 October:** Hestercombe Gardens, CHEDDON FITZPAINE, near Taunton, TA2 8LG. 11am - 5pm. £11.80 / £5.90. 01823 413923 / [hestercombe.com](http://hestercombe.com).



## 'COLOUR AND LIGHT'

Until 22 September

Artwave West, Morcombelake, DT6 6DY. Tuesday - Saturday 10am - 5pm. 01297 489746 / [artwavewest.com](http://artwavewest.com). "Paintings by Louise McClary, Val Hudson, Kerry Harding, Colin Taylor, Sophie Capron, and Kathryn Stevens." Above: Louise McClary 'A Wild Rainbow Submerged In Your Shadow'

## 'THE BLACKSMITH'S CRAFT'

Until 23 September

Wiltshire Museum, 41 Long Street, DEVIZES, SN10 1NS. Monday - Saturday 10am - 5pm, Sunday 12noon - 4pm. £5.50 / £4.50. 01380 727369 / [www.wiltshiremuseum.org.uk](http://www.wiltshiremuseum.org.uk). "Rural traditional art made by blacksmith John Girvan in his forge in Devizes."

## PHILIP TONKYN: 'ANCIENT LANDSCAPES'

Until 23 September

Bishop's Palace, Market Place, WELLS, BA5 2RA. 10am - 6pm. 01749 988111. "Panoramic photographs."

## SEBASTIAN CHANCE

Until 28 September

Art Tea Zen, 105 Cheapside, LANGPORT, TA10 9PW. Monday - Saturday 9am - 5pm. [arteazen.co.uk](http://arteazen.co.uk). "A series of small works inspired by gardens and landscapes."

## 'BRISTOL MUSIC: SEVEN DECADES OF SOUND'

Until 30 September

M Shed, Princes Wharf, Wapping Road, BRISTOL, BS1 4RN. Tuesday - Sunday 10am - 5pm. 0117 922 4749. "The Bristol music scene since the late 1950s has been nothing but eclectic. This exhibition will take stories told by people all over the city to celebrate and debate Bristol music. Is there one definitive 'Bristol sound'? Are the best days of Bristol music behind us? Where in the city is the heart of musical Bristol?"



**Thelma Hulbert Gallery**

**Experiencing the Landscape**  
Art on the East Devon Way  
**8 September- 27 October**

Thelma Hulbert Gallery, Elmfield House, Dowell Street, Honiton, Devon, EX14 1LX  
01404 45006 [info@thelmahulbert.com](mailto:info@thelmahulbert.com) [www.thelmahulbert.com](http://www.thelmahulbert.com)  
Open: Tues - Sat 10am - 5pm | Free Admission, Donations welcome















# VISUAL ARTS

## LUCIAN DRANE

**Until 30 September**

Creative Gallery, St John's Hill, WAREHAM, BH20 4NB. 10am - 5pm. 01929 551700 / creativegallerywareham.co.uk. "Ceramics and glass."

## LYDIA HALCROW: 'MAPPING PLACE'

**Until 30 September**

Contains Art, East Quay, WATCHET, TA23 0AQ. Wednesday - Sunday 11am - 4pm. containsart.co.uk. "Using pigments made from collected Earth, this exhibition involves themes of nature, memory and place. Layering personal journeys, Lydia creates unconventional maps of her experiences."

## 'PHILLIP SUTTON AT 90!'

**Until 6 October**

Allsop Gallery, Bridport Arts Centre, South Street, BRIDPORT, DT6 3NR. Tuesday - Saturday 10am - 4pm. 01308 424204 / bridport-arts.com. "Born in 1928, and having grown up in humble surroundings in London's East End, Philip Sutton left school at fourteen and briefly worked in a drawing office before completing his national service during the Berlin Airlift."

## 'INTERPRETATION & EXPRESSION: ARCHAEOLOGY & ART'

**Until 13 October**

Wiltshire Museum, 41 Long Street, DEVIZES, SN10 1NS. Monday - Saturday 10am - 5pm, Sunday 12noon - 4pm. £5.50 / £4.50. 01380 727369 / www.wiltshiremuseum.org.uk.

"Sketches and paintings produced over the past ten years by Peter Dunn, archaeological reconstruction artist, whilst working in the UK and overseas."

## 'EXPERIENCING THE LANDSCAPE'

**Until 27 October**

Thelma Hulbert Gallery, Elmfield House, Dowell Street, HONITON, EX14 1LX. Tuesday - Saturday 10am - 5pm. 01404 45006 / thelmahulbert.com.

"Celebrating 25 years of the East Devon Way. Showcasing new work by contemporary artists Angus Rutherford, Gabby Hoad and Jenny Mellings, alongside a reflection of 80 nature-based creative workshops."

## 'CHILDHOOD'

**Until 18 November**

Royal Albert Memorial Museum, Queen Street, EXETER, EX4 3RX. Tuesday - Saturday 10am - 5pm. 01392 265858 / rammuseum.org.uk.



**'THE MIRACLE OF GEOMETRY'**  
(Oil, acrylic and gesso on canvas, 207 x 173 cm, 2011)

## STEPHEN FARTHING: THE MIRACLE PAINTINGS

"Royal Academician Stephen Farthing exhibits this intriguing and vibrant series for the first time. Never seen before because he wished for them to be shown together in a context where these concepts may be realised, a space where faith may be celebrated. Stephen does not wish to illustrate stories or understand the miracles, but to capture the energy. To give a visual presence to a miraculous moment."

**Until 23 October:** Salisbury Cathedral, The Close, SALISBURY, SP1 2EJ. Monday - Saturday 9am - 5pm, Sunday 12noon - 4pm. 01722 555148 / salisburycathedral.org.uk.

## 'KABOOM! HONITON!'

**Until 21 November**

Boston Tea Party, Monkton House, 53 High Street, HONITON, EX14 1PW. Monday - Saturday 7am - 6pm, Sunday 8am - 6pm. rosspenwill.co.uk.

## 'JACK'S COUSIN'

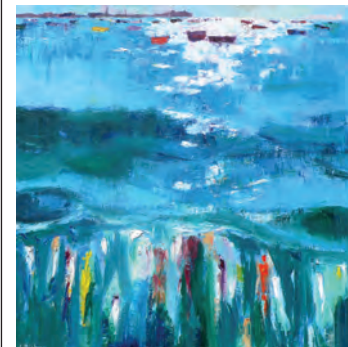
**Until 22 November**

Boston Tea Party, Monkton House, 53 High Street, HONITON, EX14 1PW. Monday - Saturday 7am - 6pm, Sunday 8am - 6pm. kenevansprints.co.uk.

## NAOMI HART: 'SOME FAR OFF MAGIC LAND'

**Until 7 January**

Royal Albert Memorial Museum, Queen Street, EXETER, EX4 3RX. Tuesday - Sunday 10am - 5pm. £5 / £3. 01392 265858 / www.rammuseum.org.uk. "From the forests of France to the deserts of Australia, this exhibition conveys a sense of place and the mystery that we can find there."



## STEPHEN BISHOP

**1 September**

Luna Gallery, Faith House, Livability Holton Lee, East Holton, HOLTON HEATH, Poole, BH16 6JN. 10am - 4pm. 07981 685704 / stephenbishop.co.uk.

## 'CABINET OF CURIOSITIES'

**1 - 8 September**

Ace Arts, Market Place, SOMERTON, TA11 7NB. Tuesday - Saturday 10am - 5pm. 01458 273008 / acearts.co.uk. "An interactive exhibition of work by learning disabled students from South Petherton who have produced their own cabinet of curiosities."



## ADRIAN PARNELL

**1 - 30 September**

Axle Arts, Leighton Road, BATH, BA1 4NF. Monday - Friday 10am - 12noon. 01225 461230 / axlearts.com. "Adrian Parnell's delicate paintings remind us of simpler times." Above: Adrian Parnell 'Buttercups' (Oil on board)



# ANONYMOUS ART SHOW

Saturday 1st September to Saturday 22nd September



All pictures created on  
6 x 12 inch canvasses;  
any media, any subject



The Artists remain a  
mystery until after the  
artwork is purchased

Glastonbury Galleries

10A High Street, Glastonbury, Somerset BA6 9DU  
Tel 01458 837888 www.glastonburygalleries.com  
Tues - Sat 9 - 5 Sun 11 - 4





## VISUAL ARTS



VALERIE BARDEN 'THE WALLACE COLLECTION'  
(Oil on board, 60 x 80 cm, 2017)

### VALERIE BARDEN: GALLERIES

"This series of striking and colourful paintings by Valerie Barden is about people in galleries, in different public, indoor spaces, who are there for the purpose of looking at things."

**8 - 25 September:** The Malthouse Gallery, The Town Mill, Mill Lane, LYME REGIS, DT7 3PU. 10.30am - 4.30pm. townmillarts.co.uk.

#### 'HATPINS TO HASHTAGS'

**2 - 11 September**

Red Brick Building, Morland Enterprise Park, Morland Road, GLASTONBURY, BA6 9FT. 11am - 5pm. h2h.feministarchivesouth.org.uk.

"Feminist Archive South is celebrating 100 years since some women got the right to vote with an exhibition and programme of free events, workshops and creative opportunities for reflection, lively discussion and action on feminist issues now - in the age of the hashtag."

#### JENNY GREENLAND

**4 - 22 September**

Foyer and Cafe Galleries, Bridport Arts Centre, BRIDPORT, DT6 3NR. Tuesday - Saturday 10am - 4pm. 01308 424204 / bridport-arts.com. "A celebration of all things Jurassic featuring lively and colourful oil paintings and evocative drawings depicting the stark, wild coastal landscape and the unique towns and fishing villages located between Exmouth and Studland Bay."

#### NEIL COLCLOUGH

**5 - 11 September**

The Gallery, Shaftesbury Arts Centre, 11 Bell Street, SHAFTESBURY, SP7 8AR. 10am - 4pm. 01747 855243. "Neil portrays how he sees the land and seascapes using varying approaches, creating atmospheric to realism styles, working in oils and acrylics."

#### LESLEY HUGGINS

**5 - 18 September**

The Gallery Upstairs, Upton Country Park, POOLE, BH17 7BJ. 9.30am - 4pm. thegalleryupstairs.org.uk.

#### '20 X 20'

**5 - 30 September**

The Old Town Quarry, South Road, WESTON-SUPER-MARE, BS23 2LU. Wednesday - Sunday 10.30am - 4.30pm. northsomersetarts.org.

#### THE SHAFTESBURY GROUP

**7 September**

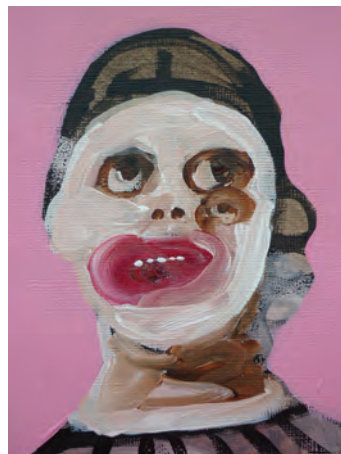
Town Hall, 21 High Street, SHAFTESBURY, SP7 8LY. 10am - 4pm. 01747 853822. "Monthly one-day exhibition."

#### 11 EAST DEVON ARTISTS:

##### 'ARTBEAT'

**7 - 17 September**

Kennaway House, Coburg Road, SIDMOUTH, EX10 8NG. 10am - 5pm. kennawayhouse.org.uk. "Sixth annual exhibition for 11 East Devon Artists. Affordable, original art."



CORINNA SPENCER: 'LOVELY CREATURES'

**7 - 29 September**

That Art Gallery, 17 Christmas Steps, BRISTOL, BS1 5BS. 0117 329 2522 / thatartgallery.com. "Approaching painting in a way that pushes at the boundaries of acceptable and recognisable portraiture Spencer suggests turmoil beneath the skin and the fluidity and uncertainty of daily life. The women in these portraits reach out to the viewer from the past into an equally tumultuous present day."

# HUMAN NATURE

A new sculpture trail in the gardens of The Bishop's Palace, Wells

15. 09. 18 -  
25. 11. 18  
10 am - 4 pm  
THE BISHOP'S  
PALACE, WELLS

[www.bishopspalace.org.uk](http://www.bishopspalace.org.uk)

Curated by Gallery Pangolin



## RWA

### 166 Annual Open Exhibition

7 Oct - 25 Nov 2018

Hundreds of works of contemporary art by renowned artists and new talent



[rwa.org.uk](http://rwa.org.uk)

Royal West of  
England Academy

Smith &  
Williamson



OLOIDS

ALABASTER

MOBIUS

TREFOIL KNOTS

BORROMEAN RINGS

TORUS

PISCES

WAVES

SEALS

TORSOS



NICHOLAS DURNAN

AUTUMN EQUINOX  
SCULPTURE EXHIBITIONSATURDAY 22ND SEPTEMBER  
ONE DAY ONLY 10AM -10PMREFRESHMENTS AND CREAM TEAS AVAILABLE ALL DAY  
ELM GROVE STUDIO, EAST STREET, DRAYTON,  
LANGPORT TA10 0JZ TEL. 07908 830502

## VISUAL ARTS



MR AND MRS ANDREWS

## ANTHONY CURRELL

Willem De Kooning and JS Bach may seem an unlikely combination but for Anthony Currell they are linked by his passion for both of them. As a child he heard Bach's *Tocatta* and *Fugue in D Minor* on the radio and it had such a profound affect on him that he saved his pocket money to buy it on vinyl even though he didn't have a record player. It led to a lifelong passion for the music of Bach. De Kooning's painting had a similarly profound affect on his work when he saw it for the first time in the Tate exhibition of 1968. Currell's painting presents a similar interplay between figuration and abstraction and in fact he sees little distinction between the two.

His paintings reference numerous sources: Renaissance art, Botticelli's *La Primavera*, Rembrandt's *The Night Watch*. His subject matter is essentially dependent on ideas and images that emerge as he allows his thoughts to wander across the surface of his mind. They reflect his life and concerns - a book read, a memory, a sense of outrage and often refer back to the past.

A banner of tumbling letters and numbers in a sea of vigorous marks runs beneath his re-interpretation of Gainsborough's celebration of property, *Mr and Mrs Andrews*. A random goldfinch perched on a stick was plucked from a Roman Wall painting. A line of blind figures, a comment on the holocaust, are a direct quote from Pieter Bruegel the Elder. His concern with geometry can be traced to his fascination with the Fibonacci series and a lifelong obsession with the golden section: "It underlies all of my painting". The two small geometric triptychs, GS1 and GS2 are "pure Golden Section". His rhythmic lyricism is more evident in the freer treatment of his large scale painting *Spectrum 3*: "its geometry compromised purely through the demands of the painting as it developed."

The powerful gritty prints of miners are a direct reference to Currell's childhood holidays in Wales where his father was born. He remembers watching one group of men leaving the pit blackened by their day's work, the other group pale and white going into the mine. Throughout Currell's iconography lurks an understanding that this is about the paint, about the materials. The message when there is one, is secondary.

Currell is a passionate advocate for drawing. The line which meanders across the surface of his engravings of heads are reminiscent of Auerbach's drawings - heavily rubbed out and re drawn so many times. He was part of SW Hayter's *Atelier 17* in Paris in the early sixties, meeting some of the foremost artists of that time. Hayter was such a perfectionist that initially Anthony was almost too frightened to attempt a process which was described in such complex terms.

Currell's retrospective at the Atkinson Gallery is an opportunity to explore work going back fifty years. It includes drawings and prints as well as paintings and it is to painting that he turns as an expression of his art.

Fiona Robinson

**3 September - 13 October:** Atkinson Gallery, Millfield, STREET, BA16 0YD. Monday - Saturday 9.30am - 5pm. 01458 444322 / [atkinsongallery.co.uk](http://atkinsongallery.co.uk).

## Tincleton Gallery

contemporary fine art in Dorset

early Autumn

gallery artists

Fri 14th Sep - Sun 4th Nov

"Wendy" by  
Claire Newman-Williams

The Old School House, Tincleton, near Dorchester, DT2 8QR  
Friday / Saturday / Sunday / Monday • 10am – 5pm  
01305 848 909 • [www.tincletongallery.com](http://www.tincletongallery.com)



## JULIA COOPER

**7 September - 1 October**

David Simon Contemporary, 3 - 4  
Bartlett Street, BATH, BA1 2QZ.  
Monday and Tuesday + Thursday -  
Saturday 10am - 6pm. 01225 460189 /  
davidsimoncontemporary.com.

## RICHARD ALLEN

**8 - 30 September**

Andelli Art, Mendip House, Upper  
Breach, South Horrington, WELLS, BA5  
3QG. Wednesday - Sunday 10am -  
5pm. 01749 572 373 / andelliart.com.  
"Sky Arts Landscape Artist of the Year."

## ROB HAMES: 'LANDSCAPE OF THE PLAIN'

**8 September - 6 October**

Fisherton Mill, 108 Fisherton Street,  
Salisbury, SP2 7QY. Monday - Saturday  
10am - 5pm. 01722 500200 /  
fishertonmill.co.uk / robhames.com.  
"Plein air landscapes encompassing  
twelve months upon Salisbury Plain.  
Over 50 works in oils, and gouache  
capture the changing seasons with  
spontaneous first hand imagery."

## IAN MCKEEVER

**8 September - 27 October**

Young Gallery, Market Place,  
SALISBURY, SP1 1BL. Monday -  
Saturday 10am - 4pm. 01722 343275 /  
younggallerysalisbury.co.uk. "Ian  
McKeever's later works have an  
emphasis on an abstract language  
which is concerned primarily with the  
human body and architectural  
structures."

## CLIFFORD AND ROSEMARY ELLIS: 'MAKING ART MATTER'

**8 September - 25 November**

Victoria Art Gallery, Bridge Street,  
BATH, BA2 4AT. 10.30am - 5pm. £4.50.  
.victoriagal.org.uk. "Husband and wife  
team Clifford and Rosemary Ellis  
designed bold, colourful posters and  
book jackets for London Transport,  
Shell and Collins books and taught at  
the influential Bath Academy of Art in  
Corsham. Catalogue available."

## 'RESONANCE'

**10 September - 4 October**

The Chamber Room, Town Hall, High  
Street, CORSHAM, SN13 0EZ. Monday  
- Thursday 9am - 5pm, Friday 9am -  
4.30pm. 01249 702130 / 01249 714917  
/ alexandragould.co.uk. "Art that  
explores and examines the negative  
effects of plastics and pollution on our  
planet, offering a critical comment on  
the effect of man-made in the current  
climate."



BEVERLEY ROUWEN

## BRIDPORT & WEST DORSET OPEN STUDIOS

"Celebrating its twentieth anniversary, Bridport & West Dorset Open Studios is a showcase for the artists who live and work in this beautiful corner of the world. 70 of West Dorset's finest artists, designers and makers are inviting visitors to explore their studios, galleries, and workshops. There will be a wide variety of visual arts to enjoy including painting, printmaking, illustration, ceramics, photography, jewellery, textiles, glass and sculpture. Following a devastating fire at St Michael's Studios, several of Bridport's displaced artists who lost their studios, materials and life's work, will be showing in different venues across Bridport, a tribute to the wonderfully resilient art scene that continues to thrive and flourish."

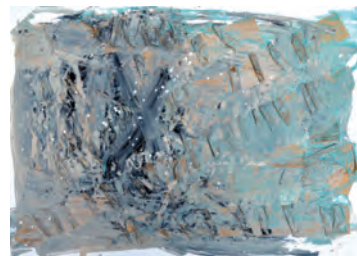
**8 - 16 September:** Locations throughout BRIDPORT and WEST DORSET. [bridportopenstudios.co.uk](http://bridportopenstudios.co.uk).



GERALDINE GUEST



CAROLE IRVING



KUHLA SHINE

## 'WW1: THE RUSSELL-COTES REMEMBERS'

**11 September - 18 November**

Russell-Cotes Art Gallery and Museum,  
BOURNEMOUTH, BH1 3AA. Tuesday -  
Sunday 10am - 5pm. £7.50. 01202  
451858. "Marking the centenary of the  
end of WW1, this selection of military  
memorabilia, propaganda, cartoons,  
artwork and artefacts reflects on the  
impact of this world-changing event."

## KARREN BURKETT AND AMANDA HOUSE

**12 - 18 September**

The Gallery, Shaftesbury Arts Centre,  
11 Bell Street, SHAFTESBURY, SP7  
8AR. 10am - 4pm. 01747 855243.  
"Karren is a painter who explores the  
vibrant colours in her local landscape,  
using oils, watercolours and pastels.  
Amanda is a textile artist, she will be  
showcasing her art books."

## 'CHARMOUTH TO CHERNOBYL'

**13 - 26 September**

The Courtyard Gallery, The Town Mill,  
Mill Lane, LYME REGIS, DT7 3PU.  
10.30am - 4.30pm. [townmillarts.co.uk](http://townmillarts.co.uk).  
"Working mainly in pastel, watercolour  
and ink, Howard Flanagan seeks to  
capture quiet, unadorned natural  
beauty in the eyes of people struggling  
with every day life and the landscape  
around us."



The Bowridge Gallery is showing a solo exhibition of new works  
by an exciting new Dorset artist

## Linda Lewis: Our Journey

Through our journey in life we pass so many places of turbulence  
and peacefulness in our minds, hearts and our actions. Through  
my paintings I hope this journey will give you inspiration to seek,  
challenge and experience life to reach your eternal home.

## The Bowridge Gallery

Unit 3, Bowridge Hill Farm, Gillingham, Dorset, SP8 5QS

Open 13 to 21 October, 12noon - 5pm,

07590 599641 • [thebowridgegallery@hotmail.com](mailto:thebowridgegallery@hotmail.com)

[www.thebowridgegallery.co.uk](http://www.thebowridgegallery.co.uk)



# VISUAL ARTS

## ROGER ELLICOTT: 'AVERTED VISIONS'

**13 September - 2 October**  
LT Gallery, 1 Orchard Street, WESTON-SUPER-MARE, BS23 1RG. Tuesday, Friday and Saturday 10am - 4pm, Thursday 12noon - 7pm. 07730 431726 / ltgallery.com. "New and recent acrylic paintings inspired by reality but 'something a little to the side of it'. Storms, jellyfish, a dark angel, a fallen warrior and more!"

## 'THE TEN'

**14 - 23 September**  
Centrespace Gallery, 6 Leonard Lane, BRISTOL, BS1 1EA. 12noon - 7pm. 0117 929 1234 / centrespacegallery.com. "The Ten, a UK-based multi-disciplinary collective of artists formed in St Ives, showcase their eponymous exhibition. Their work ranges from painting and sculpture to installation."

## 'IN ORDINARY TIMES DEMAND THE EXTRAORDINARY'

**14 September - 12 October**  
Hatch Gallery, 7a Church Street, CHRISTCHURCH, BH23 1BW. Tuesday - Saturday 10.30am - 4pm. 07787 517958 / hatchgallery.co.uk. "Paintings by Vito Stramaglia, Iryna Yermolova, and Bianca Valentine."

## GALLERY ARTISTS

**14 September - 4 November**  
Tincton Gallery, The Old School House, TINCLETON, near Dorchester, DT2 8QR. Friday - Monday 10am - 5pm. 01305 848909 / tinctongallery.com. "A mixed show by our artists. Exhibits will include new story boxes by Claire Newman-Williams."



## ALISON WEBBER: OPEN STUDIO

**15 September**  
27 Monmouth Road, DORCHESTER, DT1 2DE. 10am - 4pm. 01305 756030 / alisonwebberphotography.com. "Open studio exhibiting and selling a selection of work by Dorset photographer, Alison Webber LRPS, including mounted and framed prints together with a wide selection of greetings cards."



'L'APRES-MIDI D'UN FAUNE IN CERNE ABBAS'

## DURAND IN DORSET

"André Durand's much anticipated new exhibition of allegorical paintings, which follow the artist's pilgrimage through Dorset which began in May 2017."

**8 September - 10 November:** The Grain Gallery, South Street, SHERBORNE, DT9 3LU. 10am - 4pm. 01935 814208 / thegraingallery.co.uk.

## NIKKI ALLFORD: 'SEA OF SIGHS'

**15 and 16 September**  
Cleveland Pools, Hampton Row, BATH, BA2 6QS. 2 - 5pm. clevelandpools.org.uk. "Hidden away in Bathwick, Bath, on the banks of the River Avon, is the only surviving Georgian lido in the UK. Built in 1815 the semi-derelict site is now a wildlife haven. 'Sea of Sighs' is an installation responding to the Pools, made primarily from vivid blue electrical tape, suggestive of pools of water, rivers, or teardrops. Ideas of memory and place are explored."

## 'ROCKAWAY WEEKENDER'

**15 and 16 September**  
Rockaway Park, Eastcourt Road, TEMPLE CLOUD, BS39 6BU. 11am - 10pm. rockawaypark.co.uk. "Outdoor sculpture, gallery and open studios, blacksmithing, live bands and café, featuring Joe Rush, Dave Panit, Filthy Luker, Giant Triplets, and guests."

## 'FOOTPRINTS'

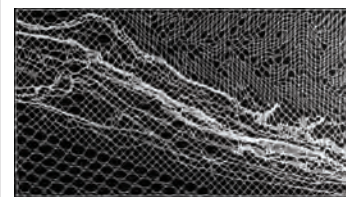
**15 - 30 September**  
Ace Arts, Market Place, SOMERTON, TA11 7NB. Tuesday - Saturday 10am - 5pm. 01458 273008 / acearts.co.uk. "Fibre and textile works by Lydia Needle and Rebecca Bruton."

## 'VISIONS OF SCIENCE'

**15 September - 13 October**  
Andrew Brownsworld Gallery, The Edge, University of Bath, Claverton Down, BATH, BA2 7AY. Tuesday - Saturday 11am - 5pm (Wednesday 11am - 7pm). 01225 386777 / edgearts.org. "Works from UK artists which reflect, represent, capture or depict modern day scientific phenomena."

## EILEEN COOPER: 'FOREST'

**15 September - 20 October**  
Rabley Drawing Centre, Rabley Barn, MILDENHALL, Marlborough, SN8 2LW. Thursday, Friday and Saturday 10am - 4pm. rableygallery.com. "Eileen Cooper's new works concentrate on the gloriously rich relationship informed by mythology, custom and legend, underpinned by the complex question of human relationships."



## JANE ATKINSON: 'EBB 'N' FLOW'

**15 September - 28 October**  
Walford Mill Crafts, Knobcrook Road, WIMBORNE, BH21 1NL. Tuesday - Saturday 10am - 5pm, Sunday 11am - 4pm. walfordmillcrafts.co.uk. "This exhibition showcases the work of Jane Atkinson, who uses traditional bobbin lace techniques in a contemporary way to create beautiful and intriguing large-scale works."

## ANDREW ROBERTS: 'IF NOT NOW, THEN WHEN'

**15 September - 4 November**  
Hubnub Gallery, Hubnub Centre, Whittox Lane, FROME, BA11 3BY. Monday - Friday 9am - 5pm, Saturday and Sunday 10am - 5pm. hubnubcentre.com. "Works which explore colour, light and texture, and depict the landscape in all its diversity."

## 'HUMAN NATURE'

**15 September - 25 November**  
The Bishop's Palace, Market Place, WELLS, BA5 2PD. 10am - 6pm. £8.95 / £7.95 / £3.35. 01749 988111 / bishopspalace.org.uk. "A new sculpture trail set in the stunning gardens of The Bishop's Palace, curated by Gallery Pangolin, with work from six different sculptors, celebrating the qualities that characterise and define humankind."

# THE CREATIVE GALLERY

Showcasing ceramics, paintings, photography, jewellery and glass by local artists



"Lucian Drane - glass & ceramics"  
31st August - 30th September



"My Needle Felted Friends"  
Linda Payne  
1st-31st October

St John's Hill, Wareham, Dorset BH20 4NB t 01929 551700 e fiona@creativegallerywareham.co.uk  
Open daily until 30th September, then Monday-Saturday 10am-5pm



## VISUAL ARTS



'THIS ENGLAND'

### DICK HEWITSON: OBJECTS IN THE DORSET LANDSCAPE

"Dick's oil painting, from contemporary figurative to abstract, was included in the RA Summer Exhibition in 2016 and 2018. Recent work explores remaining Dorset coastal WW2 pillboxes and lookouts."

**17 - 23 October:** The Gallery, Shaftesbury Arts Centre, 11 Bell Street, SHAFTESBURY, SP7 8AR. 10am - 4pm. 01747 855243 / shaftesburyartscentre.org.uk.

#### 'JOURNEY'

**17 September - 6 October**

Ilminster Arts Centre, The Meeting House, East Street, ILMINSTER, TA19 0AN. Monday - Friday 9.30am - 4.30pm, Saturday 9.30am - 2.30pm. 01460 54973 / themeetinghouse.org.uk. "Paintings, textiles, glass and pottery by Jo Hamilton, Wendy Hermelin, Caroline Lewis, and Jill Preston."

#### NEW DORSET ART GROUP

**19 - 25 September**

The Gallery, Shaftesbury Arts Centre, 11 Bell Street, SHAFTESBURY, SP7 8AR. 10am - 4pm. 01747 855243.

#### SALLY SILK: 'SPECTRUM OF STITCH'

**19 September - 2 October**

The Gallery Upstairs, Upton Country Park, POOLE, BH17 7BJ. 9.30am - 4pm. thegalleryupstairs.org.uk. "Textile exhibition."

#### 'A WONDERFUL WORLD OF STITCH'

**20 September - 1 October**

The Gallery Upstairs, Upton Country Park, POOLE, BH17 7BJ. 9.45am - 4.45pm. westcountryembroiderers.co.uk. "Contemporary and traditional embroidery and textiles by members of West Country Embroiderers."

#### PETER GOODHALL: 'SEE THE SEA'

**21 - 30 September**

Kennaway House, Coburg Road, SIDMOUTH, EX10 8NG. 10am - 5pm. petergoodhall.com. "Solo exhibition combining both contemporary and traditional marine paintings by an award winning artist who has always been passionate about painting the sea and water."

#### VAROSHA: '13'

**22 September**

Hours, 10 Colston Yard, BRISTOL, BS1 5BD. 11am - 4pm. 07971 889767 / www.varosha.co.uk.



#### BATH SCHOOL OF ART AND DESIGN MASTERS DEGREE SHOW

**22 - 26 September**

Bath School of Art and Design, Sion Hill, BATH, BA1 5SF. 10am - 4pm. 01225 875875 / bathspa.ac.uk. "A comprehensive selection of work by students graduating with Masters degrees in Ceramics, Curatorial Practice, Fashion and Textiles, Fine Art and Visual Communications. The MA Degree Show cohort includes professional artists, curators, and designers, who have chosen to study at Bath Spa University to further enhance their skills, knowledge, and approach to their practice. Many have already been selected to participate in national and international exhibitions, projects, workshops, and to undertake substantial commissions."

#### 'OOPS WOW TODDLER ART SHOW'

**25 September - 20 October**

Foyer and Cafe Galleries, Bridport Arts Centre, BRIDPORT, DT6 3NR. Tuesday - Saturday 10am - 4pm. 01308 424204 / bridport-arts.com. "Artworks and photographs from the artist-led, messy process-based art group for very young children in Bridport."

#### 'CONVERSATIONS WORKING FROM THE FIGURE'

**26 September - 9 October**

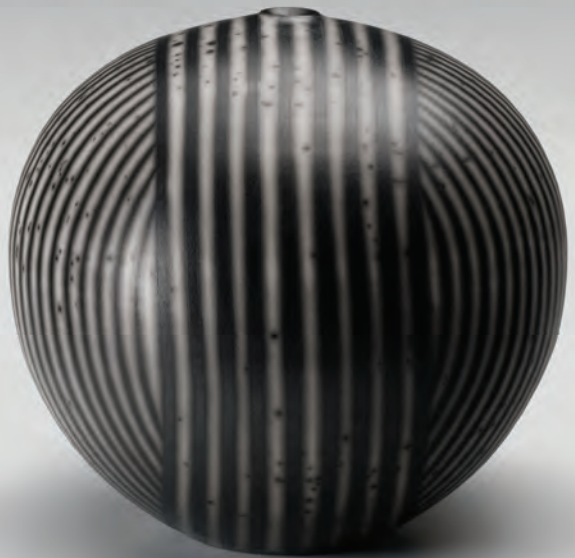
The Gallery, Shaftesbury Arts Centre, 11 Bell Street, SHAFTESBURY, SP7 8AR. 10am - 4pm. 01747 855243. "Three artists encounter the figure and give expression to their thoughts."

### 40 YEARS ON Clay 25

Tim celebrates 40 years as a maker and 25 years of exhibitions at Woodbury

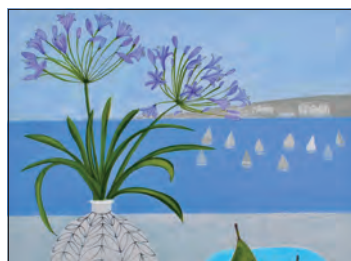
Tim Andrews · Françoise Dufayard  
Susan Halls · Tadami Hirota  
Peter Hayes · Laurel Keeley  
Hilary Mayo · Antonia Salmon  
Taja · Sarah Walton

**September 15 - October 7**  
open Tuesday - Sunday 11 - 5



#### Tim Andrews Gallery

Greenway, Woodbury, Exeter, Devon EX5 1LW · Tel: 01395 233475  
www.timandrewsceramics.co.uk · timandrews@eclipse.co.uk



#### Boilerhouse Gallery

CONTEMPORARY ART AND CRAFT GALLERY

Open Monday to Saturday 10-5

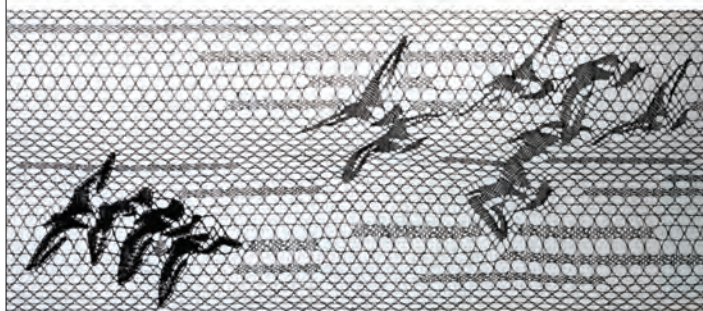
**Autumn Arty Bazaar Sat 13 October**

Sandy Hill Lane, Corfe Castle, Dorset BH20 5JF  
www.boilerhousegallery.co.uk



# EBB 'N' FLOW

Lace, Place and Climate by Jane Atkinson



15 September - 28 October 2018

Open Tuesday to Saturday 10am-5pm  
Sunday 11am- 4pm

Knobcrook Road, Wimborne, Dorset BH21 1NL  
www.walfordmillcrafts.co.uk 01202 841400

walfordmill  
crafts



Clive Melbourne

clive.melbourne  
@btinternet.com

www.artistsandillustrators/  
clivemelbourne

*ArtsLink*  
Your link to art and culture  
We inspire, educate and support

- Art education programmes
- Targeted wellbeing sessions
- Films shown monthly
- Community events

ArtsLink Fizz! offers:  
Groups for people with memory loss and for challenged parents, plus Parkinson's Dance

Join us! Support us!  
www.sherborneartslink.org.uk  
01935 815899

Sherborne ArtsLink Ltd Company no. 2471382. Registered charity no. 1007660  
The Manor House, Newland, Sherborne, Dorset, DT9 3JG

ILMINSTER  
arts centre  
AT THE MEETING HOUSE

DISCOVER SOUTH  
SOMERSET'S MOST VIBRANT  
ARTS VENUE!

**JOURNEY** Monday 17 September - Saturday 6 October  
Paintings, textiles, glass and pottery by four West Country artists

**COMING OF AGE** Monday 8 - Saturday 27 October  
Retrospective Exhibition by Phat Qwaters textile group

## DICK HEWITSON OBJECTS IN THE DORSET LANDSCAPE

17 - 23 October

The Gallery  
Shaftesbury Arts Centre  
11 Bell Street  
Shaftesbury  
Dorset SP7 8AR

10am - 4pm  
01747 855243  
shaftesburyartscentre.org.uk

Vulnerable but resolute



## VISUAL ARTS



'THE ARK'

## STOGURSEY ARTS FESTIVAL

"Stogursey Arts Festival is a community run event featuring music events, a flower festival, art exhibitions, a craft fayre, a scarecrow trail, The Big Draw, and more!"

**12 - 16 September:** Various locations in and around STOGURSEY, Somerset. facebook.com/stogurseyartsfestival.

### HANNAH WALDRON: 'SPANS' 26 September - 27 October

Kobi & Teal, 57 Catherine Street,  
FROME, BA11 1DA. 10am - 4.30pm.  
07737 367419 / kobiandteal.co.uk.

"Hannah Waldron is a multi-disciplinary artist and designer currently based in Cornwall. Her latest woven series investigates the particular inherent temporal, spatial and structural qualities of weaving to document journeys through time and space."

### NORTH DORSET QUILTERS: 'NOW WE ARE 20'

**27 - 29 September**  
St Peter's Church, SHAFTESBURY, SP7 8LY. 10am - 4pm. 01747 840236.

### 'ART 4 ARMY'

**28 September - 2 October**  
Duke's, Brewery Square, Dorchester, DT1 1GA. Friday 10am - 9pm, Saturday and Sunday 10am - 5pm, Monday 10am - 6pm. 07919 046668 / art4army.org. "Charity fundraising exhibition of contemporary art, including paintings, sculpture, ceramics and glass. Also a daily programme of talks by eminent speakers on history of art and sculpting animals."

### 'MAKING A MARK'

**28 September - 10 October**  
The Malthouse Gallery, The Town Mill, Mill Lane, LYME REGIS, DT7 3PU. 10.30am - 4.30pm. townmillarts.co.uk. "Recent work by Jules Critchinson, Hilary Hight, Rachel Hudson, Elizabeth Richie, Kathie Scott, Sue Warren, and Libby Washington."

### VAROSHA: '13' 29 September

Hours, 10 Colston Yard, BRISTOL, BS1 5BD. 11am - 4pm. 07971 889767 / www.varosha.co.uk.

### DERWENT ART PRIZE

**29 September - 10 November**  
Trowbridge Town Hall, Market Street, TROWBRIDGE, BA14 8EQ. Monday - Friday 10am - 4pm, Saturday 10am - 2pm. townhallarts.co.uk. "67 artworks celebrate drawing in all its diversity. Showcasing the very best 2D and 3D artworks created in pencil, coloured pencil, pastel, graphite and charcoal."



### LYNNE CARTLIDGE: 'CITY LIFE'

**1 - 31 October**  
Axle Arts, Leighton Road, BATH, BA1 4NF. Monday - Friday 10am - 12noon. 01225 461230 / axlearts.com. "Light, pattern and form remain a constant theme in Lynne Cartlidge's impressionistic, autumnal city studies." Above: Lynne Cartlidge 'Morning Light in Waterloo Gardens' (Oil on panel)



## EXHIBIT A

Artists and photographers are invited to submit work for consideration as next issue's page 3 **EXHIBIT A** by emailing images to: simon@evolver.org.uk

Alison Webber PHOTOGRAPHY



## OPEN STUDIO

Third Saturday of the month  
or by appointment  
27 Monmouth Rd, Dorchester DT1 2DE



alisonwebberphotography.com



# VISUAL ARTS

## 'MY NEEDLE FELTED FRIENDS'

1 - 31 October

Creative Gallery, St John's Hill, WAREHAM, BH20 4NB. 10am - 5pm. [creativegallerywareham.co.uk](http://creativegallerywareham.co.uk). "A host of charming domestic and woodland creatures."

## WILLIAM MORTON: 'NATAL BLUES'

4 - 23 October

LT Gallery, 1 Orchard Street, WESTON-SUPER-MARE, BS23 1RG. Tuesday, Friday and Saturday 10am - 4pm, Thursday 12noon - 7pm. 07730 431726 / [ltgallery.com](http://ltgallery.com). "Paintings evolving from a strong drawing foundation, many employing complex geometric frameworks in their composition."

## 'OUR NAKED SKIN'

4 October - 10 November

Salisbury Arts Centre, Bedwin Street, SALISBURY, SP1 3UT. Tuesday - Saturday 10am - 3pm. [wiltshirecreative.co.uk](http://wiltshirecreative.co.uk). "Acting in counterpoint to the play 'Her Naked Skin' concurrently running at Salisbury Playhouse, this exhibition explores the 'skin' between the personal and public, desire and constraint, love and politics, age and visibility, and more. Reflecting on suffragette strategies of endurance, risk, exposure and sacrifice, the exhibition considers the value of vulnerability, openness and nakedness as a form of agency today."

## 'THE ART OF THE MATTER'

5 - 22 October

The Gallery Upstairs, Upton Country Park, POOLE, BH17 7BJ. 10am - 5pm. [thegalleryupstairs.org.uk](http://thegalleryupstairs.org.uk). "Exhibition by Members of Poole and East Dorset Art Society."

## 'ART ON THE HILL'

6 and 7 October

Multiple venues in Windmill Hill and Victoria Park, BRISTOL, BS3. 11am - 5pm. [artonthehill.org.uk](http://artonthehill.org.uk). "70 artists working in many media exhibiting in private homes and public venues in compact residential area of Bristol. Programme of music, performing arts and practical workshops."

## 'PAEAN'

6 - 31 October

The Cloisters, Wells Cathedral, WELLS, BA5 2UE. 01749 674483 / [wellscathedral.co.uk](http://wellscathedral.co.uk) / [eleanorbartlett.com](http://eleanorbartlett.com). "Installation."

## 'BRITISH WILDLIFE OPEN'

6 October - 3 November

Ace Arts, Market Place, SOMERTON, TA11 7NB. Tuesday - Saturday 10am - 5pm. 01458 273008 / [acearts.co.uk](http://acearts.co.uk).



LOUISE KELLY PHILLIPS

## ART SHOW 2

"Pop-up show featuring work by artists Paris, Louise Kelly Phillips, Sue Gent, Rowdy, and more."

20 - 23 September: The Totterdown Centre, 144 Wells Road, TOTTERDOWN, Bristol, BS4 2AG. 12noon - 6pm. 07793 239376.

## 166 ANNUAL OPEN EXHIBITION

6 October - 25 November

Royal West of England Academy, Queen's Road, Clifton, BRISTOL, BS8 1PX. Tuesday - Saturday 10am - 5.30pm, Sunday 11am - 5pm. £7.95 / £6.75. 0117 973 5129 / [rwa.org.uk](http://rwa.org.uk). "The renowned RWA Annual Open Exhibition returns for its 166th year with works by emerging and established artists. This dynamic exhibition features painting drawing, photography, sculpture, illustration, video and mixed media submissions and is a showcase of some of the most exciting artists from across the country and beyond. All work is for sale, making the Annual Open a perfect opportunity to discover new artists or invest in well-known names."

## 'COMING OF AGE'

8 - 27 October

Ilminster Arts Centre, The Meeting House, East Street, ILMINSTER, TA19 0AN. Monday - Friday 9.30am - 4.30pm, Saturday 9.30am - 2.30pm. [themeetinghouse.org.uk](http://themeetinghouse.org.uk).

## 'ART ON THE QUAY'

9 - 11 October

37 South Street, WAREHAM, BH20 4LP. 12noon - 6pm. 07889 247981.

## RACHEL SARGENT AND CATHERINE

SIMMONDS: 'FAR WEST'

10 - 16 October

The Gallery, Shaftesbury Arts Centre, 11 Bell Street, SHAFTESBURY, SP7 8AR. 10am - 4pm. 01747 855243. "Rachel's powerful seascapes and Catherine's lyrical poetic responses were developed during two residences on Cape Cornwall."



## CATHERINE BEALE:

'ATMOSPHERICS'

11 - 14 October

44AD Artspace, 4 Abbey Street, Bath, BA1 1NN. 10am - 6pm. 07891 409490 / [catherinebeale.com](http://catherinebeale.com) / [44ad.net](http://44ad.net).

"Celebrating the power of modern pigments and dramatic weather over our city, award-winning Bath painter Catherine Beale's solo exhibition bursts with colour and luminosity."

Above: 'Illumination'

## THE SHAFTESBURY GROUP

12 October

Town Hall, 21 High Street, SHAFTESBURY, SP7 8LY. 10am - 4pm. 01747 853822. "Monthly one-day exhibition."

## CHRISTINE ALLISON: 'REALISM TO ABSTRACTION'

12 - 31 October

The Malthouse Gallery, The Town Mill, Mill Lane, LYME REGIS, DT7 3PU. 10.30am - 4.30pm. [townmillarts.co.uk](http://townmillarts.co.uk).

"Realistic portraits of animals and their humans as well as curious abstractions of the natural world captured in oil on canvas."

## BOILERHOUSE ARTY BAZAAR

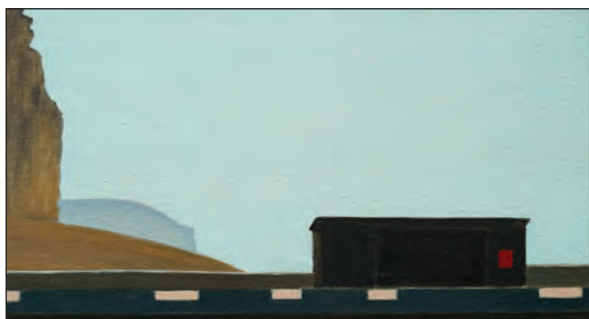
13 October

Boilerhouse Gallery, Sandy Hill Lane, CORFE CASTLE, BH20 5JF. 12noon - 4pm. 01929 481073 / [boilerhousegallery.co.uk](http://boilerhousegallery.co.uk). "Art and craft stalls, scrummy food, live music and a special steam railway event running alongside, plus all the usual delights of the open studios and gallery."

## STEPHEN BISHOP

13 October

Luna Gallery, Faith House, Livability Holton Lee, East Holton, HOLTON HEATH, Poole, BH16 6JN. 10am - 4pm. 07981 685704 / [stephenbishop.co.uk](http://stephenbishop.co.uk). See 1 September.



## SLADERS YARD & CAFÉ SLADERS

Contemporary Art, Furniture & Craft Gallery Award-winning restaurant. West Bay DT6 4EL Open every day 10am - 5pm. @sladersyard West Bay 01308 459511 [sladersyard.co.uk](http://sladersyard.co.uk)

## STILL LIGHT

Alex Lowery  
Jack Doherty  
Petter Southall  
until 16 September

## Currents:

Julian Bailey  
Luke Elwes

Vanessa Gardiner

Janette Kerr RSA Hon

Leading artists & designers  
from 22 September





## VISUAL ARTS



RACHEL DUNFORD

## TEN SHOTS

"New work from Ten Shots, a photographic collective based on Portland. Initiated in 2017, the group focus on the unique Isle of Portland as their inspiration."

**3 September - 21 October:** White Stones, 13 Easton Street, PORTLAND, DT5 1BS. Monday - Saturday 9am - 5pm, Sunday 9am - 2.30pm. 01305 561597 / whitestonesportland.com.



### CAMILLA NOCK: 'THE DEAD SCRIBBLE ON WALLS'

**13 October - 17 November**

Allsop Gallery, Bridport Arts Centre, BRIDPORT, DT6 3NR. Tuesday - Saturday 10am - 4pm. 01308 424204 / bridport-arts.com. "Camilla Nock re-imagines a melancholic shadow cast by the First World War. The work explores a trans-generational connection to a legacy of embodied grief in which

the desire to counter the risk of forgetting is mediated through the obligation of the artist to express empathy."

### ABCD: 'A BOOK IS A DREAM THAT YOU HOLD IN YOUR HANDS'

**16 - 20 October**

Wells Museum, 8 Cathedral Green, Wells, BA5 2UE. Monday - Saturday 10am - 5pm. 01749 672911. "New work by the Book Arts group at Dove Studios in Somerset, plus calligraphic panels by John Rowlands-Pritchard."

### PETER COATES: 'A BRUSH WITH IMAGINATION'

**18 - 31 October**

The Courtyard Gallery, The Town Mill, Mill Lane, LYME REGIS, DT7 3PU. 10.30am - 4.30pm. townmillarts.co.uk.

### BATH SOCIETY OF ARTISTS: 'SOURCE'

**18 October - 3 November**

44AD Artspace, 4 Abbey Street, BATH. Monday - Saturday 11am - 6pm, Sunday 11am - 5pm. bsartists.co.uk. "Celebrating the diverse practises of many nationally renowned artists."

### ALISON WEBBER: OPEN STUDIO

**20 October**

27 Monmouth Road, DORCHESTER, DT1 2DE. 10am - 4pm. 01305 756030. See 15 September.

### BATH TEXTILE ARTISTS: 'ARCHIVAL MATERIAL'

**24 October - 6 November**

Bath Royal Literary and Scientific Institution, 16 - 18 Queen Square, BATH, BA1 2HN. Monday - Saturday 10am - 4pm. 01225 312084 / bathtextileartists.com. "Textile artworks linked to and inspired by archival material held by BRLSI."

### ANTHONY ATWOOD AND EMILY VAN EESTEREN

**24 October - 6 November**

The Gallery, Shaftesbury Arts Centre, 11 Bell Street, SHAFTESBURY, SP7 8AR. 10am - 4pm. 01747 855243. "Anthony's paintings in watercolour and oils are inspired by his love of the British landscape. Emily's ceramics are raku fired, she focuses on texture using fossils, shells, ferns, and leaves."

### BOURNEMOUTH ARTS CLUB

**26 October - 5 November**

The Gallery Upstairs, Upton Country Park, POOLE, BH17 7BJ. Monday - Friday 10.30am - 3.45pm, Saturday and Sunday 10.30am - 4.30pm. thegalleryupstairs.org.uk. "Annual exhibition."

### 'MADE IN GLASTONBURY'

**29 October - 24 November**

Ilminster Arts Centre, The Meeting House, East Street, ILMINSTER, TA19 0AN. Monday - Friday 9.30am - 4.30pm, Saturday 9.30am - 2.30pm. 01460 54973 / themeeetinghouse.org.uk. "Original art, craft and photography made in the Isle of Avalon by a group of artists inspired by their unique surroundings."

### ROBIN RICHARDSON: 'BOUNDLESS ENERGY'

**30 October - 3 December**

Top Floor Gallery, Lighthouse, Poole's Centre for the Arts, Kingland Road, POOLE, BH5 1UG. Tuesday - Saturday 10am - 5pm. 01202 280000 / lighthouse.co.uk.

### POOLE LEISURE PAINTERS: 'WINTER EXHIBITION'

**30 October - 3 December**

Mezzanine Gallery, Lighthouse, Poole's Centre for the Arts, Kingland Road, POOLE, BH5 1UG. Tuesday - Saturday 10am - 5pm. 01202 280000 / lighthouse.co.uk.

**PULL-OUT SUPPLEMENT**

BRIDPORT & WEST DORSET

# OPEN STUDIOS

8-16 SEPTEMBER 2018

Discover our vibrant art scene

Sponsored by

sculpture  
by the lakes

Free Guide

90 Artists  
42 Venues

bridportopenstudios.co.uk



# SOMERSET OPEN STUDIOS 2018



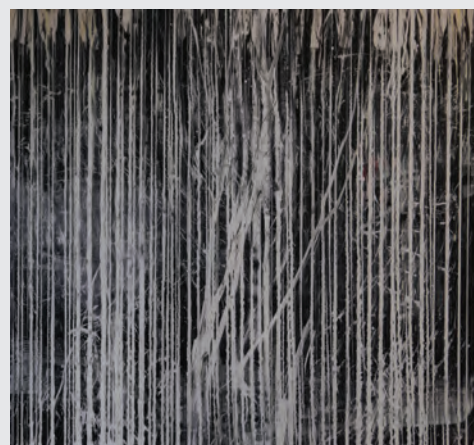
ESTHER JEANES (VENUE 123)



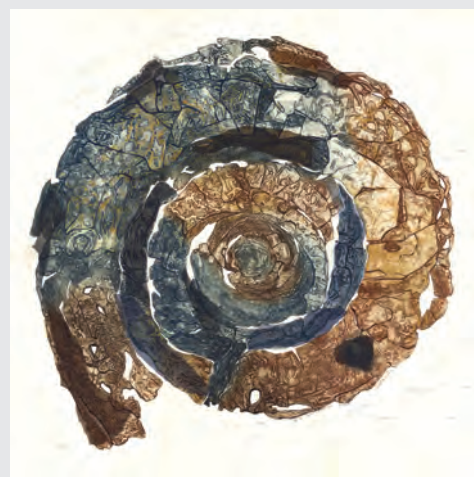
# SOMERSET OPEN STUDIOS 2018



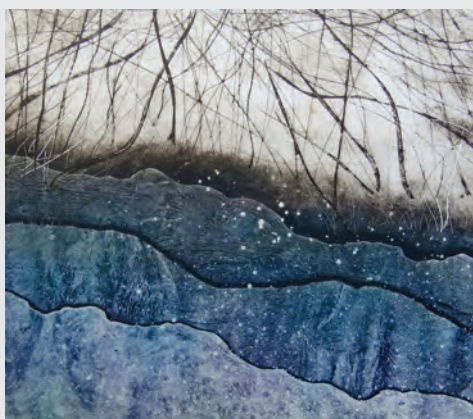
LYNN KEDDIE (VENUE 144)



CLIVE WALLEY (VENUE 140)



SUE LOWE (VENUE 42)



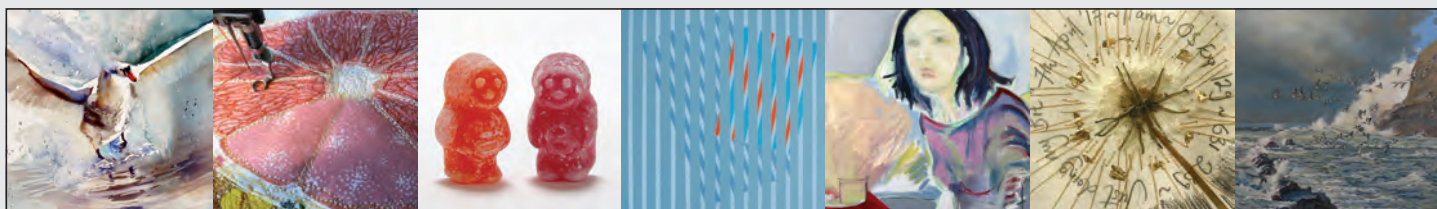
JACKIE CURTIS (VENUE 16)



IAN MARLOW (VENUE 147)



ANNA NEWLAND HOOPER (VENUE 76)



**SOMERSET OPEN STUDIOS 15 - 30 September**

Venue 114: Lydia Needles 'Footprints' + Venue 115: Rebecca Bruton 'Creative Pathway'



**Market Place, Somerton, Somerset TA11 7LX • 01458 273008 • [www.acearts.co.uk](http://www.acearts.co.uk)**



# SOMERSET OPEN STUDIOS 2018

Now the largest event in Somerset for visual artists and makers, Somerset Open Studios 2018 draws Art Weeks back to its roots, focussing on artists in their working environment.

Between 15th and 30th September, artists demonstrate how they make their work: their process, practice and inspiration.

The event allows a rare opportunity to see inside artists' studios, temporary working spaces and other locations to find out what goes on behind the scenes.

Open Studios showcases established names as well as introducing new and emerging artists.

Visitors can find out first-hand about the creative process through demonstrations, workshops, talks and visits, to educate, inspire and delight.

Art appreciators of all ages are welcome at Family Friendly venues and also at a Family Friendly finale weekend on 29th and 30th September, with special events and activities for everyone.

Artists' studios can be found in unexpected and unusual locations and the event is an ideal opportunity to explore the different and distinct regions of the county and make some surprising discoveries.

This supplement features advertising and work by all the Somerset artists who particularly want Evolver readers to pay them a visit.



The free Somerset Open Studios 2018 guide features nearly 300 artists in 192 venues, and is available now at tourist information centres, libraries, museums, galleries, arts and culture venues, cafes, bookshops, and other selected outlets throughout Wessex.

To receive a copy by post email [artweeks@somersetartworks.org.uk](mailto:artweeks@somersetartworks.org.uk), or browse an online version on the SAW website:

[somersetartworks.org.uk](http://somersetartworks.org.uk)



AMANDA BEE (VENUE 142)



JILL PRESTON (VENUE 122)



TERRI HOGAN (VENUE 138)



JULIA MANNING (VENUE 117)

**contains art studios**  
**andy davey, leo davey**  
**sue lowe (venue 42)**  
**georgina towler (venue 43)**  
**11am-6pm wed-sun**  
**closed mon & tues**

In addition to the artists' work in the studios Georgina's SAW Creative Pathways award is supporting her in the creation of a large scale installation within the Contains Art courtyard. Contains Art's gallery will be open concurrently, presenting Lydia Halcrow 'Mapping Place'.

find us:  
watchet ta23 0aa     
[containsart.co.uk](http://containsart.co.uk)

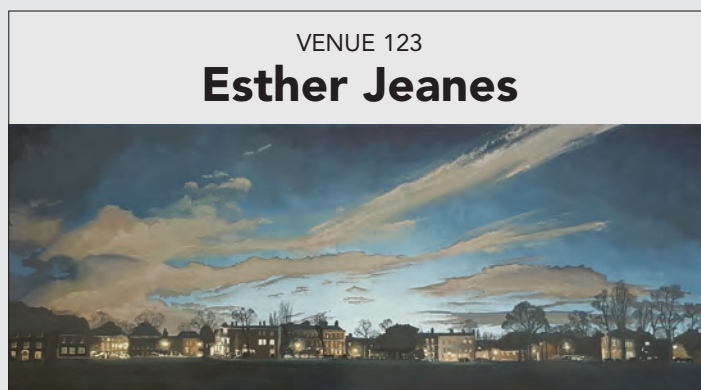


Supported using public funding by  
**ARTS COUNCIL**  
**ENGLAND**





Venue 120  
**EMILY DUCHSCHERER KIRK**  
 188 Lyde Road, Yeovil, BA21 5PN  
 Wednesday - Sunday 11am - 6pm  
 07734 322107  
[emilyduchschererkirk.co.uk](http://emilyduchschererkirk.co.uk)



**VENUE 123**  
**Esther Jeanes**  
**Rose Cottage, East Coker, BA22 9LR**  
 01935 862524 • [estherjeanes.com](http://estherjeanes.com)  
 Open Wednesday and Thursday 10am - 2.45pm, Friday - Sunday 10am - 4.30pm



**JILL PRESTON**  
 IMPRESSIONISTIC AND ABSTRACT PAINTINGS  
**Venue 122: Drummers, 46 Lower**  
**Wraxhill Road, Yeovil, BA20 2JT**  
 11am - 6pm (Closed Mondays)  
 01935 471843 • [jillprestonpainter.co.uk](http://jillprestonpainter.co.uk)

VENUE 73

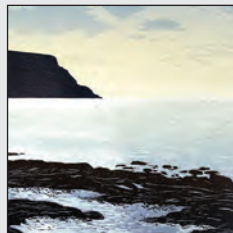
**Jane Brossard**

MIXED MEDIA, PAINTING, PAPER

**12 Church Street, Taunton, TA1 3JE**

Open 15, 16, 20, 21, 22, 23, 27, 28 September  
 11am - 6pm

or ring for an appointment: 07779 281263  
 01823 253042 / [jbrossard@hotmail.co.uk](mailto:jbrossard@hotmail.co.uk)



**JULIA MANNING** RE SWLA  
 Printmaker, Member of Pine Feroda

**PAUL STUBBS**

Potter, Somerset Guild Member

**Venue 117: 2 ROSEBANK, QUEEN STREET,**  
**KEINTON MANDEVILLE, TA11 6EQ**

Mixed media prints. Large woodcuts by PINE FERODA.  
 Prints and greeting cards for sale. Paul's pots thrown /  
 extruded. Set in curious gardens. [juliamanning.co.uk](http://juliamanning.co.uk)



**Alexandra Lavizzari**

Local landscapes in pastels and oil,  
 collage, photography

**Venue 77: 108 Mantle Street,**  
**Wellington, TA21 8BD**

15 - 30 September, 11am - 6pm



closed MONDAYS & TUESDAYS



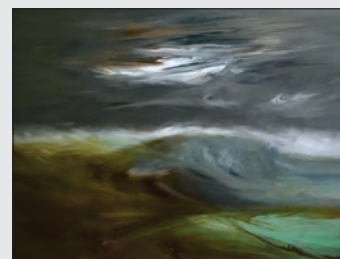
**CECILIA LEETE**

JEWELLERY

**Venue 34: Uppcott Farm, Uppcott**

Lane, near Bicknoller, TA4 4EY  
 07717 947286 / [cecilialeete.com](http://cecilialeete.com)

Opening times: 11am - 6pm



VENUE 154

**Lizbeth Spurgeon**

PAINTINGS

**Green End, Edford Green,**  
**Holcombe, BA3 5DB**

Tuesday - Saturday 11am - 6pm

01761 239073

[imaginationroom.artweb.com](http://imaginationroom.artweb.com)



VENUE 16

**Jackie Curtis**

PRINTMAKING

**2 Greenfield Lane, Bawdrip, TA7 8PX**

01278 685911 • [jcurtisart.com](http://jcurtisart.com)

Open daily 10am - 6pm  
 (other times by appointment)

1 of 3 venues in Bawdrip



Venue 48

**Peggy Lock**

Prints Paintings Textiles

Spindles, Blue Anchor, Minehead TA24 6LB

Opening times 11am - 6pm

15 - 30 September 2018

(closed Mondays and Tuesdays)



Venue 1

**Chris Holden - Activist Artist**

Humanity faces some important and serious issues.  
 Essentially the art engages with truth about these.

*"Inspiring work - should be seen by a wide audience"*  
 John and Maureen Sheriden

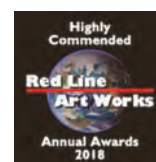
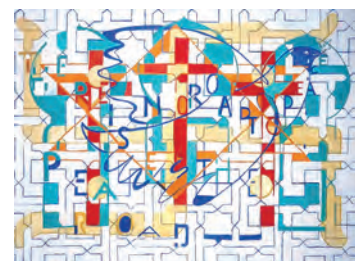
*"Great to see that somebody challenges in a way that art can"*  
 R. Woods

**Barn House, Garston Lane, Blagdon, BS40 7TG**  
 Open daily 11am - 6pm during Somerset Open Studios  
 15 - 30 September

(Open during the rest of the year by appointment)

T: 01761 462021 / E: [echolden@hotmail.com](mailto:echolden@hotmail.com)

W: [activistartist-chrisholden.com](http://activistartist-chrisholden.com)



Highly Commended  
**Red Line Art Works**  
 Annual Awards 2018

[redlineartworks.org](http://redlineartworks.org)



## CREATIVE PATHWAYS BURSARIES 2018

Somerset Art Works is delighted to announce that Rebecca Bruton, Hattie Moore, Luminara Star and Georgina Towler have received Creative Pathways bursaries this year, to access mentoring support and create new work as part of the Somerset Open Studios event.



### Rebecca Bruton

Rebecca is a textile artist based in South Somerset, specialising in free-motion embroidery and applique to build up intricate and vibrant textile artworks. She uses the sewing machine as a tool to mix colours, 'paint' and draw with a free-hand style using threads. During the event, she will be working at ACE Arts in Somerton creating work that studies the fascinating world of seeds and beans and their sustainability. She will be working in this space alongside artist Lydia Needle.

"I am over the moon to be awarded the Creative Pathways 2018 Bursary and am honoured that I will be working in the amazing gallery space at ACE Arts alongside artist mentor Lydia Needle. I am keen to embrace the opportunity to immerse myself in the Somerset community of artists and makers. I am most excited to receive mentoring and advice from SAW and ACE Arts that will help me develop my own creative practice and to forge links that will last beyond the event itself."

**Venue 115:** ACE Arts, Market Place, SOMERTON, TA11 7NB. Monday - Saturday 10am - 5pm, Sunday 11am - 4pm. 01458 273008 / [acearts.co.uk](http://acearts.co.uk).

[rebeccabruton.co.uk](http://rebeccabruton.co.uk)



### Hattie Moore

In 2017 Hattie completed a Masters in Fine Art: Sculpture at the Slade School of Fine Art, London for which she received the Clare Winsten Memorial Award. Most recently she has been researching traditional Asian gardens in China and Japan. In Weston Bampfylde's Victorian village hall Hattie will be using her experiences of these gardens to explore scaled-down representations of larger landscapes with ceramics, sculptures and drawings. She will be holding creative workshops and be demonstrating her working methods in her pop-up studio.

"Having recently returned to Somerset after studying in London, I hope to meet other local artists and people interested in the arts by taking part in the Open Studios event. Receiving the bursary will allow me to create new work and explore my ideas in the context of the Somerset landscape."

**Venue 119:** Village Hall, WESTON BAMPFYLDE, near Sparkford, BA22 7HT. 15 + 16 + 20 + 21 + 22 + 23 September 11am - 6pm. 07837 425125.

[hattiemoore.com](http://hattiemoore.com)



### Luminara Star

Luminara Star gained a BA (Hons) in Fine Art at Kingston University, London. Her main inspiration comes from folk art / crafts and her own Romanian heritage. As well as using traditional folk skills such as paper cutting and egg painting she also draws on digital media, creating such works as 'The Digital Flower Garden' which was exhibited as part of the Bath Digital Art Festival in 2017. Traditional forms of art and craft are juxtaposed with digital technology throughout Luminara's art practice enabling her to bring these forms into a contemporary arena. Luminara will be welcoming visitors to her home studio and will offer an opportunity to create their own paper cutting art.

"Through the Creative Pathways Bursary, my aim is to explore the conversation between contemporary art practice and traditional folk art / craft. I plan to further research and develop practical skills inspired by the traditional folk art and craft of my Romanian heritage while gaining a deeper understanding of how these skills might be represented through my own contemporary art practice."

**Venue 132:** 1 Field Cottages, Sunnyhill, BRUTON, BA10 0NW. Wednesday - Sunday 11am - 5pm. 01749 812063.

[luminarastar.co.uk](http://luminarastar.co.uk)



### Georgina Towler

Georgina's work is a visual conversation between the remembered experience and the physical environments that we exist within. She is interested in the concept of the picture plane, how we pull environments together in our minds and the way we use pictorial imagery to visually make sense of space. Intrigued by the power the 'landscape' has to position oneself within the world, Georgina will be using the courtyard at Contains Art during Open Studios to create a large scale installation exploring the way we encounter space. Supporting drawings, plans and experiments will also be available to see in her studio.

"In receiving this bursary I am hoping to step away from my conventional practice and create a piece which engages viewers on a physical level. I hope to dramatically expand the scale of my work whilst also introducing 3-dimensional forms into my practice. This will be a fantastic opportunity for me to push my current ideas in a new direction and create a piece of public art."

**Venue 43:** Contains Art, East Quay, Watchet, TA23 0AQ. Wednesday - Sunday 11am - 6pm. 07807 839961.

[georginatowler.com](http://georginatowler.com)

**BLACKSWAN OPEN**  
2018

**CALL FOR ENTRIES**  
SUBMIT ONLINE  
[WWW.BLACKSWANARTS.ORG.UK](http://WWW.BLACKSWANARTS.ORG.UK)

**CLOSING DATE 14 SEPTEMBER**  
**EXHIBITION 19 OCTOBER - 24 NOVEMBER**

HAUSER & WIRTH  
SOMERSET

mount

SK

POScript

KOBI & TEAL  
SOFT - SILENT - STONE

BRUNTONWOOD

MESSUMS - HUTCHINGS

galleries | studios | shop | cafe  
2 Bridge Street, Frome BA11 1BB  
01373 473980 | [www.blackswan.org.uk](http://www.blackswan.org.uk)

**Volkhardt Müller**  
**THE PLANTATION**

**Sept 8 - October 6**  
preview Fri 7 Sept 6pm-8pm  
all welcome





## THE VENUES

The venues are divided into 5 areas:

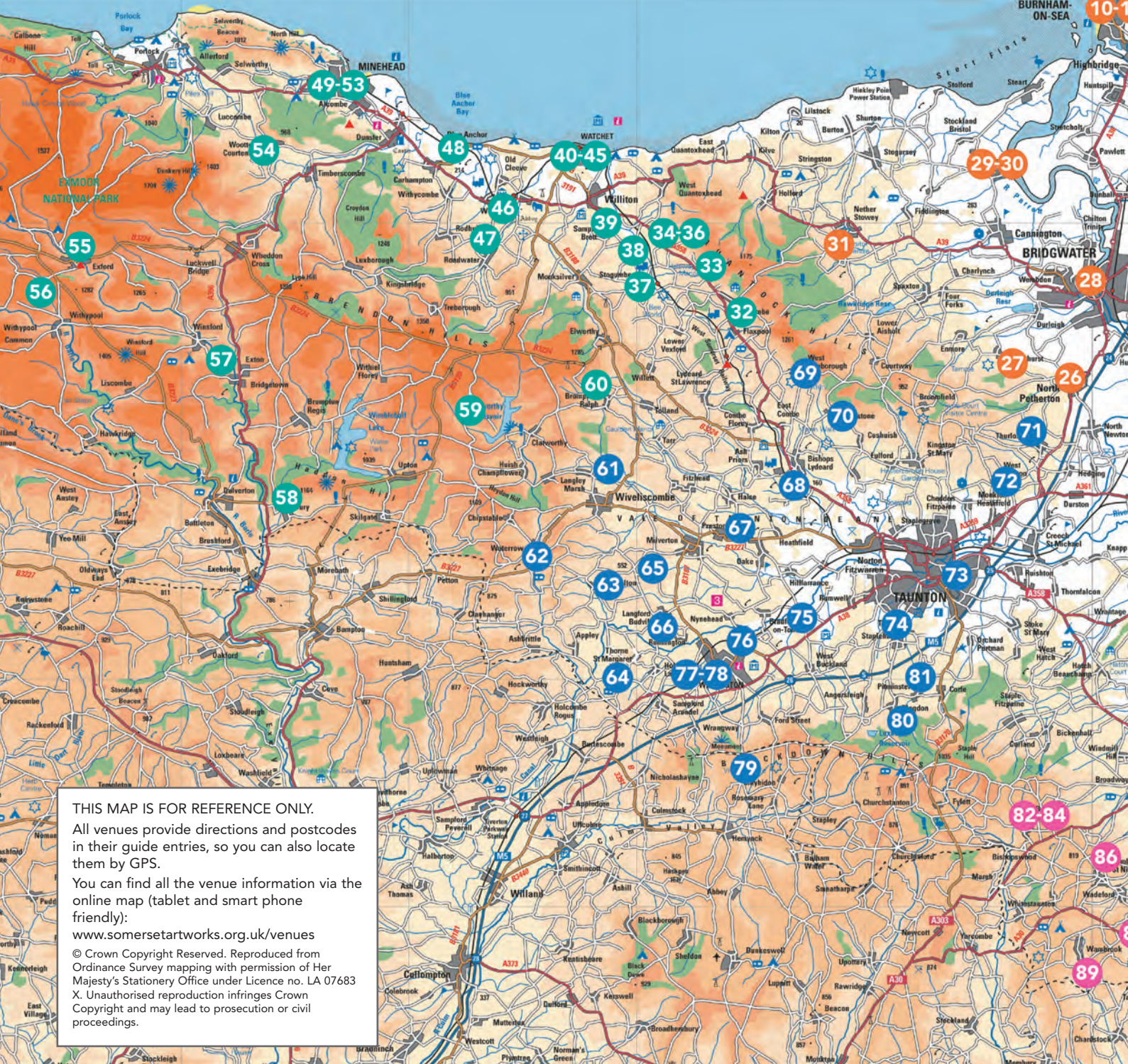
**SEDGEMOOR:** VENUES 1 - 31

**WEST SOMERSET:** VENUES 32 - 60

**TAUNTON DEANE:** VENUES 61 - 81

**SOUTH SOMERSET:** VENUES 82 - 138

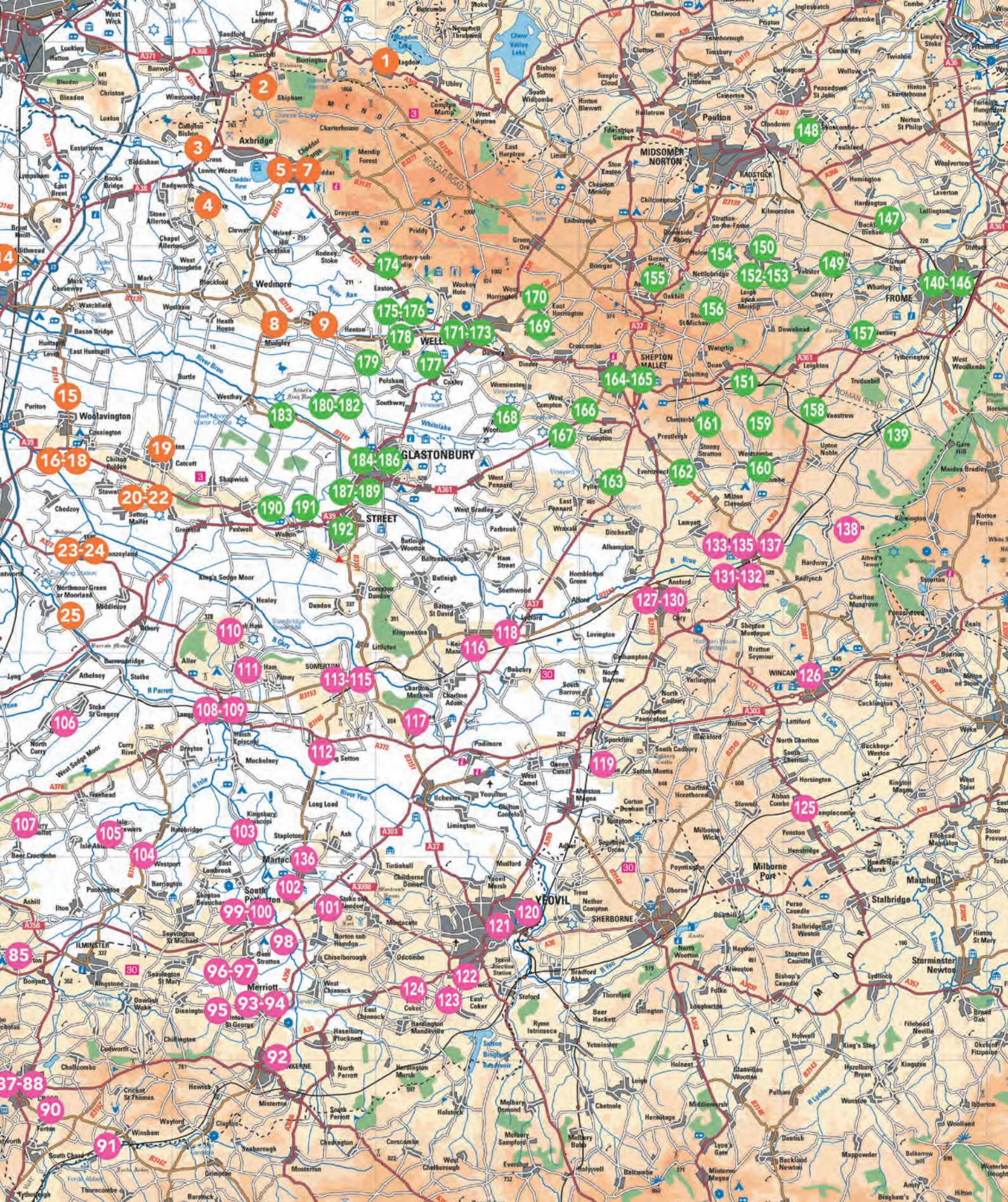
**MENDIP:** VENUES 139 - 192



# SOMERSET OPEN

## 15 – 30 SEP





# SOMERSET OPEN STUDIOS 2018

SEPTEMBER





## Mayumi bottega YU

VENUE 156

Showing the exciting forms and transparent nature of hand-woven fabric provided by Japanese paper yarn

Weaving and dyeing workshops are available

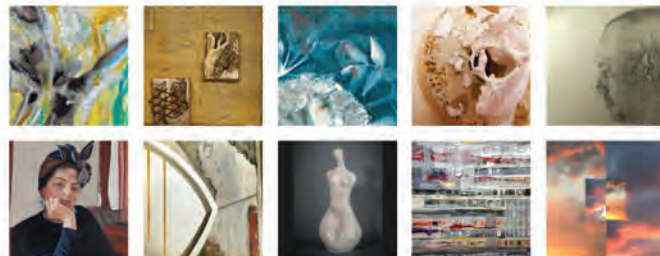
bottega-yu.net / mayumi@bottega-yu.net

Venue Number 76

The Old  
BRICK WORKSHOP  
Spinning, Dyeing, Weaving

## SOMERSET OPEN STUDIOS 2018

15 - 30 September • Open Daily 11am - 6pm



[www.theoldbrickworkshop.com](http://www.theoldbrickworkshop.com)



The Old Brick Workshop, Higher Poole,  
Wellington, Somerset, TA21 9HW  
07989 465427 alison@theoldbrickworkshop.com

scaw  
somerset  
art works

## Somerset Open Studios 2018 – VENUE 150

Open 15th to 30th September: 11am - 6pm (closed Monday 24th)



David A Parfitt

Janette Kerr

### *Distance and proximity: Somerset to Shetland and beyond*

Searching out our place in the world, following trails and hunches, sometimes lost but always on the way

Sketchbooks, drawings, oil, charcoal, watercolour and print

CHURCH HALL STUDIOS, Church Street,  
COLEFORD, Radstock BA3 5NG

Refreshments available Wednesdays, Fridays and weekends



## Jane Phillips

OIL PAINTINGS  
AND SCULPTURE  
THE OLD SMITHY  
Fosseway  
High Street  
Hinton St George  
TA17 8SE  
(opposite Poulett Arms)

Open  
15 - 23 September  
11am - 5pm  
or by appointment  
01460 72420  
jane@janephillipsartworks.com  
janephillipsartworks.com



Venue 142: Amanda Bee



Venue 143: Clare Lloyd



Venue 145: Hayley Trezise



Venue 144: Lynn Keddie

MERCHANTS BARTON  
SAXONVALE  
FROME  
SOMERSET BA11 1PT



SILK MILL  
STUDIOS & GALLERY

15 - 30 SEPTEMBER  
Opening times:  
[somerstartworks.org.uk/  
openstudios2018/](http://somerstartworks.org.uk/openstudios2018/)



## ERIC SEELEY

Eric Seeley is a figurative painter, in the sense that his most usual motif is the human figure. Rarely without a sketchbook he draws constantly, but secretly, unobserved by those he observes. His sketchbooks are covered in hide, masquerading as fusty dusty old books, enabling him to sit on trains drawing with a stubby bit of pencil hidden between the pages. His subjects are completely unaware of his watchful eye. These drawings do not find their way unadulterated into his paintings. They are his raw material, which is manipulated again and again inside his head, allowing him to abstract from the figure so that they become 'simplified like little cyphers'. He is concerned with the simplification of form and the frozen moment.

A dog is frozen in mid leap. Seeley is clear that this is a captured moment; in the same way that photography stops time. The breaking down of forms into elements or shapes allows him to manipulate people into unsustainable poses, to break a back, wrench arms and legs into impossible positions. Faithful representation is not what he is looking for. It is all about composition. He is not interested in narrative and although his works are figurative and one aches to interpret them, to deconstruct the hidden story, he will not impose a narrative. That is not what his intention is. His viewers may construct their own narratives but that is up to them.

His work is also all about the paint. He has a painter's obsession with oil paint as a physical substance: the smell, the viscosity, its materiality. He is fascinated by the mystery of colour harmonies, by the rhythms and marks that move across the surface of canvas or paper. In amongst a long career of studentship he spent three years at the Royal Academy Schools in London encountering such luminaries as Peter Blake, David Hockney, Ruskin Spear and William Scott. He treasures a comment made to him by Spear about one of his paintings, that it was 'almost good'!

Working with layers of thin glazed washes Seeley's palette is often muted. It has a pale luminosity reminiscent of the work of English artists like Dod Proctor, whom he greatly admires, or Gwen John. Occasionally he will leap out of his comfort zone and paint something with bright hues or heavy impasto. He was once given a box of American oils, which are apparently very different to English ones: 'they are much more difficult to mix and blend and the smell was not right!' So he enjoyed playing around with them producing



'THE LOVERS'

vibrantly coloured works that reeked of the Mediterranean sun, until they were all gone. He then thankfully returned to his familiar paints and familiar subjects. Since he has lived in Somerset he has done some beautiful quiet small paintings of the landscape near where he lives, which have a touch of Constable about them.

A love affair with the history of art manifests itself in Seeley's iconography and in the legions of art historical references in



'WOMAN WITH LILY'

his work: from Matisse's *Bathers* to Modigliani, Bonnard's interiors with nudes and Eric Gill in his plaster reliefs. Many of his nudes have the same monumental sculptural presence in both the modeling of form and the palette that Picasso used in his work between 1917 and 1922. His work is not derivative, although he occasionally makes works that explore themes linked to painters he admires. He has a small work *Jane Morris*, done from a photograph, which he is fairly certain Rossetti never used in a painting. He has reimagined it for the 21st century.

Seeley's output is prolific, or at least it was until he moved to Somerset. He has spent the last three years converting an old barn behind his house into a purpose built studio. Finally unwrapping dozens of paintings that he had almost forgotten, he randomly filled up the space on the walls of his new studio with an explosion of colour and line. Now, daily confronted with work from all stages of his practice, he is extracting ideas and themes from the past and reworking them with the benefit of maturity.

Fiona Robinson

**VENUE 102:** Green Man Studio, South Vintners, 15 Hurst, MARTOCK, TA12 6JU. 01935 823827.



# SOMERSET OPEN STUDIOS 2018



DAVID PARFITT (VENUE 150)



KAY LEWIS-BELL (VENUE 138)



CLARE LLOYD (VENUE 143)



JOHN GAMMANS (VENUE 101)



ANNIE FRY (VENUE 138)



JANETTE KERR (VENUE 150)

## Every job starts with a blank canvas.

At AztecMedia we have over 25 years experience in design and marketing. So whether you're an independent artist needing a website or a large venue looking for promotional material, everything we do is tailored to suit who you are.

**aztecmedia**  
born to be creative®

01935 477 073 • [AztecMedia.eu](http://AztecMedia.eu)





# Angela Charles

VENUE 92

The Tower House, Mount Pleasant, Crewkerne, TA18 7AH  
Open Thursday - Sunday 11am - 5pm • [www.angelacharles.com](http://www.angelacharles.com)

Somerset Art Weeks, Open Studios  
Clive Walley

See details of opening times in SAW brochure  
or, better still, check website at: <https://clivewalley.uk/>



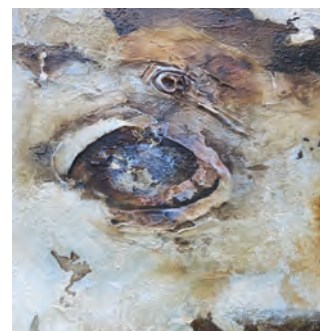
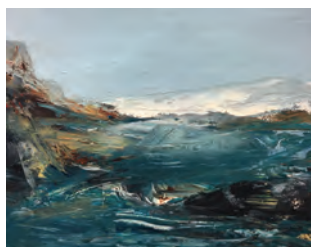
VENUE 138

## SHAVE FARM ARTISTS

South Brewham, Bruton,  
Somerset BA10 0LG

Open Thursday - Sunday  
11am - 6pm

Gallery cafe with astonishing cakes



Rowena Pearce, Terri Hogan, Kay Lewis-Bell, Annie Fry, Lin Hawkins



SAW 2018 OPEN STUDIOS VENUE 178

## Myrtle & Jason Pizzey

Hill Farm, Castle Lane, Wookey, near Wells, BA5 1NN  
15 - 30 September

Open weekends plus Thursdays and Fridays, 11am - 6pm  
01749 678006 • [www.myrtlepizzey.co.uk](http://www.myrtlepizzey.co.uk)  
[myrtlepizzey@icloud.com](mailto:myrtlepizzey@icloud.com) • [jason@mbzonline.net](mailto:jason@mbzonline.net)



VENUE 33

## ANDREA OKE SHADOWLAND

27 - 30 September, 10am - 5pm

Halsway Manor is imbued with a rich folk heritage that encompasses dragons, devils, murder and ghosts. Yet much of this history is forgotten, creating a borderland of shadows and concealments. Andrea will reanimate Halsway's landscape exploring some of the forgotten people and stories that shaped the bedrock of this place.

Halsway Manor, Halsway Lane, near Crowcombe, TA4 4BD  
01934 733533 / [shadowlandproject.wordpress.com](http://shadowlandproject.wordpress.com)

Meet the artist event: Saturday 29 September, 2pm

Family Friendly workshops: Sunday 10am - 12noon and 2 - 4pm



A  
LANDSCAPE  
OF  
OBJECTS







**Ian Marlow MRBS**  
The Royal Society of Sculptors  
Ebenezer Chapel, Buckland Dinham, Frome, BA11 2QT  
Tel: 01373 471 711  
ian@marlowsculpture.co.uk  
marlowsculpture.co.uk

# JOHN GAMMANS

ABSTRACT IMPRESSIONISTIC ARTIST

**SHOWCASE EXHIBITION**  
**OCTAGON THEATRE**  
HENDFORD, YEOVIL, SOMERSET. BA20 1UX  
1ST SEPTEMBER - 16TH OCTOBER  
MONDAY - SATURDAY 12 - 5PM

**SOMERSET OPEN STUDIOS**  
**VENUE 101**  
28 CASTLE STREET, STOKE SUB HAMDON  
SOMERSET. TA14 6RE  
15TH - 30TH SEPTEMBER  
OPEN 11AM - 6PM  
CLOSED MONDAYS & TUESDAYS  
07580 667343 / 01935 507406  
INFO@JOHNGAMMANS.CO.UK  
JOHNGAMMANS.CO.UK

SOMERSET ART WEEKS  
**SOMERSET  
OPEN  
STUDIOS**  
15 - 30 SEPTEMBER 2018

**SAW**  
somer  
art works



**HESTERCOMBE GALLERY**  
Contemporary art in reclaimed spaces

14.07.18 - 28.10.18

*prospect refuge*  
*hazard 2*

**Helen Sear**

**TAUNTON DEAN**  
LOTTERY FUNDED

supported using public funding for  
**ARTS COUNCIL  
ENGLAND**

hestercombe.com  
Helen Sear, Forest Operations, 2018, Giclée print



# PERFORMANCE

September and October 2018



MARK ANDERSON: 'FURIOUS FOLLY'

## INSIDE OUT DORSET 2018

Biennial arts festival Inside Out Dorset is a rare chance to see rural and urban locations in Dorset transformed by some of the best international outdoor circus, theatre, dance and art.

This year's sites and national heritage locations include Poole Quay, Weymouth, the Iron Age earthworks of Maiden Castle at Dorchester and woodlands around Shelley Park in Boscombe.

Boscombe will be the location for three UK premieres on 15 and 16 September: *Manimal: Gesticulating, a Way of thinking about the World* by Les Souffleurs Commandos Poetiques from France and *De Weide Wereld* by Waterlanders, and *Olie* by Collectief Waldon, both from the Netherlands.

Inside Out Dorset co-artist director Kate Wood says: "We are looking forward to welcoming artists from all over Europe to perform in our distinctive county. The opportunity to present so many premieres by companies that have never worked in the UK before is very special."

### CIRQUE ROUAGES: 'SODADE'

**14 and 15 September**

Poole Quay, POOLE. 7.45pm. Free entry. "Witness Poole Quay transform into an extraordinary circus spectacle at sunset. And during the daytime, immerse yourself in life-size video games, or take to the stage inside quirky old rowing boats."

### 'COASTAL ENCOUNTERS'

**15 and 16 September**

Various locations, BOSCOMBE, Bournemouth. 12noon - 6pm. Free entry. "See our world from a new perspective. Surprises await in Shelley Park and its surroundings with a series of unique performances and installations, including three UK premieres from international artists."

### MARK ANDERSON: 'FURIOUS FOLLY'

**20 and 21 September**

Camp Road, WEYMOUTH. 9pm. £10 / £8. Age guidance: 14+. Tickets: [insideoutdorset.co.uk](http://insideoutdorset.co.uk). "No-mans-land at nightfall. A battlefield emerges, and audiences are immersed within an open-air collage of light, sound, pyrotechnics and performance."

### AND NOW: 'WAYFARING'

**15 - 22 September**

Maiden Castle, WINTERBORNE MONKTON, Dorchester, DT2 9EY. Installation: 17 - 22 September, daylight hours. Live Event: 22 September, 2pm. Free entry. "Wayfaring is a journey of exploration. Using local and found materials the artists will craft an installation, before parades, music, light and performance transform the artwork into a rousing celebration."

[insideoutdorset.co.uk](http://insideoutdorset.co.uk)





**Wed 19 – Sat 22 September**

## The Beauty Queen of Leenane

The darkly comic tale of Maureen Folan, a plain and lonely woman in her early forties, and Mag her manipulative ageing mother.

**2pm & 8pm | THE SHERLING STUDIO**



**Fri 5 October**

## A Pure Woman

A new play based on true events that tells the story of Thomas Hardy, 84, his second wife Florence and an affair of the heart with a young Dorset Woman. Its fateful, Hardy-esque themes will appeal to audiences of all ages.

**8pm | THE SHERLING STUDIO**



**Thu 11 October**

## Nick Harper's A Wiltshire Tale

A journey through Wiltshire's history, landscape and wildlife this one-man show bears witness to this most magical of counties in spoken word, poetry and live music.

**8pm | THE SHERLING STUDIO**



**Thu 18 – Sat 20 October**

## Hannah And Hanna In Dreamland

Summer 1999: Sixteen-year-old Hannah from Margate meets Kosovan asylum seeker Hanna and they bond over pop music. Sixteen years later, what has become of the friends?

**8pm | THE SHERLING STUDIO**



**Thu 25 October**

## Gutted

Liz Richardson tells her story of life as a twenty-something with an inflammatory bowel disease. A frank and funny exploration of our relationship to care, our bodies and shame.

**8pm | THE SHERLING STUDIO**

01202 280000

[www.lighthousepoole.co.uk](http://www.lighthousepoole.co.uk)



## PERFORMANCE



## PERSUASION

"Lose yourself in Jane Austen's most romantic comedy."

**20 - 22 September:** Lighthouse, Kingland Road, POOLE, BH5 1UG.  
7.45pm (Saturday matinee 2pm). 01202 280000 / [lighthouse.co.uk](http://lighthouse.co.uk).

### PURBECK INTERNATIONAL CHAMBER MUSIC FESTIVAL

**30 August - 2 September**  
Locations throughout PURBECK, Dorset. [purbeck-chambermusic.org.uk](http://purbeck-chambermusic.org.uk).

### LYME FOLK WEEKEND

**31 August - 2 September**  
Various venues in LYME REGIS, Dorset. [lymefolk.com](http://lymefolk.com) / 01297 442138.

### ONE LOVE

**31 August - 2 September**  
Gilcombe Farm, near BRUTON, BA10 0QE. [onelovefestival.co.uk](http://onelovefestival.co.uk). "The UK's Number 1 reggae and ska festival."

### HANK WANGFORD AND THE LOST COWBOYS

**1 September**  
Bridport Arts Centre, South Street, BRIDPORT, DT6 3NR. 8pm. £15 / £13. 01308 424204. "Hardcore country."

### 'THE GOON SHOW'

**4 - 8 September**  
Salisbury Playhouse, Malthouse Lane, SALISBURY, SP2 7RA. 7.30pm (Thursday and Saturday matinee 2.15pm). £27 / £13. 01722 320333 / [wiltshirecreative.co.uk](http://wiltshirecreative.co.uk). "This timeless comedy classic comes to the stage in the first major theatrical production of its illustrious history."

### THE PIXELS ENSEMBLE

**6 September**  
Lower Pulworthy, HIGHAMPTON, Hatherleigh, Devon, EX21 5LQ. 7.30pm. £15. 01837 810940. "The Pixels Ensemble feature three established chamber music players with a shared passion for performing the finest repertoire, from the classical period to the present day."

### THE PIXELS ENSEMBLE

**7 September**  
Bridport Arts Centre, South Street, BRIDPORT, DT6 3NR. £10. 11am. 01308 424204. See 6 September.

### THE PIXELS ENSEMBLE

**7 September**  
Ilminster Arts Centre, The Meeting House, East Street, ILMINSTER, TA19 0AN. 8pm. £15. 01460 54973. See 6 September.

### THE CHURCHFITTERS

**7 September**  
Village Hall, Shortlake Lane, OSMINGTON, Weymouth, DT2 6FT. 7pm. £12. 07816 832554.

### KEITH CHRISTMAS

**7 September**  
Village Pump, The Lamb Inn, Mortimer Street, TROWBRIDGE, BA14 8BN. 8pm. £10. 01225 865107. "Blistering guitar technique and songs that thrill."

### 'POWER BEHIND THE CRONE'

**7 September**  
Bridport Arts Centre, South Street, BRIDPORT, DT6 3NR. 8pm. £13 / £11. 01308 424204. "Alison Skilbeck takes up the characters of some remarkable Shakespearean ladies."

### LA CUBANA

**7 September**  
Bocabar, The Red Brick Building, Morland Road, GLASTONBURY, BA6 9EW. 7.30pm. £15. 01458 440558 / [glastonburybocabar.co.uk](http://glastonburybocabar.co.uk). "Traditional Cuban and Spanish rhythms featuring Cuban pianist Milly Riquelme."

### 'TIPPING POINT'

**7 and 8 September**  
Dorchester Arts, The Corn Exchange, High East Street, DORCHESTER, DT1 1HF. Friday 7.30pm, Saturday 2.30 and 7.30pm. £12 / £10. 01305 266926.

### SWANAGE FOLK FESTIVAL

**7 - 9 September**  
Sandpit Field, SWANAGE. [swanagefolkfestival.com](http://swanagefolkfestival.com).

### THE PIXELS ENSEMBLE

**8 September**  
The Dance House, Gouldsbrook View, North Street, CREWKERNE, TA18 7AL. 7.30pm. £15. [concertsinthewest.org](http://concertsinthewest.org). See 6 September.

### THE JOHN WALKER BAND

**8 September**  
The Beehive, Dowell Street, HONITON, EX14 1LZ. 7.30pm. £10. 01404 384050.

### 'SEVEN DRUNKEN NIGHTS'

**8 September**  
The Brewhouse Theatre, Coal Orchard, TAUNTON, TA1 1JL. 7.30pm. £22.50. 01823 283244 / [thebrewhouse.net](http://thebrewhouse.net).

### 'THE WIPERS TIMES'

**10 - 15 September**  
Northcott Theatre, Stocker Road, EXETER, EX4 4QB. 7.30pm (Wednesday and Saturday matinee 2.30pm). £31.50 / £20. 01392 726363. "Ian Hislop and Nick Newman's true and extraordinary story of the satirical newspaper created in the mud and mayhem of the Somme."



# PERFORMANCE

## 'DUET FOR ONE'

10 - 15 September

Salisbury Playhouse, Malthouse Lane, SALISBURY, SP2 7RA. 7.30pm, 2.15pm Thursday and Saturday matinee 2.15pm). £27 / £13. 01722 320333.



## THE FB POCKET ORCHESTRA + MY SWEET PATOOTIE

12 September

Dorchester Arts, The Corn Exchange, High East Street, DORCHESTER, DT1 1HF. 8pm. £12 / £10 / £5. 01305 266926. "Uplifting vintage swing, blues, folk, ragtime, hot jazz, songs and dances from long ago."

## JIMMY OSMOND'S '70S JUKEBOX

13 September

Lighthouse, Kingland Road, POOLE, BH5 1UG. 7.30pm. lighthouse.co.uk.

## MARK FELGATE

13 September

The Beehive, Dowell Street, HONITON, EX14 1LZ. 8pm. £10.50 / £8.50. 01404 384050. Comedy.

## JOAN ARMATRADING

14 September

Lighthouse, Kingland Road, POOLE, BH5 1UG. 7.30pm. lighthouse.co.uk.

## 'COASTAL COMEDY'

14 September

Lighthouse, Kingland Road, POOLE, BH5 1UG. 8pm. lighthouse.co.uk.

## AZZHAR & GLOBAL WAVE

14 September

Bocobar, The Red Brick Building, Morland Road, GLASTONBURY, BA6 9EW. 8pm. £7 / £5. 01458 440558. "New world jazz."

## 'FLYING FOLK'

14 September

Ilminster Arts Centre, The Meeting House, East Street, ILMINSTER, TA19 0AN. 8pm. £10. 01460 54973 / themeeetinghouse.org.uk.

## POLLY JOSEPHINE

14 September

Bridport Arts Centre, South Street, BRIDPORT, DT6 3NR. 8pm. £10. 01308 424204 / bridport-arts.com. "Jazz."



## ONE MAN STRANGER THINGS: A PARODY

"Talented Canadian actor Charles Ross single-handedly recreates season one of the Netflix sensation."

11 October: Lighthouse, Kingland Road, POOLE, BH5 1UG. 7.30pm. 01202 280000 / lighthouse.co.uk.

## 'ME! ME! ME!'

14 September

The Lyric Theatre, BRIDPORT, DT6 3LX. 8pm. £12. 01308 424901 / bridportandwestbay.co.uk. "A comedic exploration of narcissism with a modern twist: mobile phones, social media, selfie sticks, slapstick, and a huge ego."

## 'ROMEO AND JULIET'

14 September

Dorchester Arts, The Corn Exchange, High East Street, DORCHESTER, DT1 1HF. 7pm. £19 / £17 / £5. 01305 266926. "A fresh and contemporary take on one of the most famous love stories of all time."

## 'BURNING BOOKS'

14 September

Bridport Arts Centre, South Street, BRIDPORT, DT6 3NR. 8pm. £13 / £11. bridport-arts.com. "A powerful and humorous look at an education system buckling under government cuts and targets. A story of protest and the teachers who choose to fight back."

## NICK PARKER + OLIVIA AUBREY

14 September

The Lamb, 20 St Johns Street, DEVIZES, SN10 3BT. 8pm. £7 / £5. sheermusic.co.uk. "Folk."

## NICK HARPER: 'A WILTSHIRE TALE'

14 and 15 September

Salisbury Arts Centre, Bedwin Street, SALISBURY, SP1 3UT. 7.30pm. £14. 01722 320333 / wiltshirecreative.co.uk. "A journey through Wiltshire's history, landscape and wildlife. Depicted through the voices of three immortal characters, this one-man show bears witness to this most magical of counties in spoken word, poetry and live music."

## PRISTON MUSIC FESTIVAL

14 - 16 September

Various locations in PRISTON, near Bath, BA2 9EE. priston.org.uk.

## JACOB & DRINKWATER

15 September

Town Hall Arts, Market Street, TROWBRIDGE, BA14 8EQ. 7.30pm. £10 / £8. trowbridgarts.com.

## 'GUYS AND DOLLS'

15 September

Bridport Arts Centre, South Street, BRIDPORT, DT6 3NR. 8pm. £15 / £13. 01308 424204 / bridport-arts.com.



## SAM KELLY'S STATION HOUSE

15 September

Dorchester Arts, The Corn Exchange, High East Street, DORCHESTER, DT1 1HF. 8pm. £14 / £12. 01305 266926.

## JOHN OTWAY AND WILD WILLIE BARRETT

16 September

Matthews Hall, TOPSHAM, Exeter, EX3 0HF. 8pm. £15.50. 01392 877895 / julianpiper.com.

PHOTOGRAPHY



**caldecourt**  
productions

Rémy & Esmé  
07710 618072

caldecourt@hotmail.com

caldecourtproductions.com





## RIDICULUSMUS: GIVE ME YOUR LOVE

"Theatre legends Jon Haynes and David Woods of Ridiculusmus are back with a funny, fragile and profound fable based on groundbreaking medical research and real-life war testimonies. Ex-soldier and budding rock star Zach has withdrawn into a cardboard box in a kitchen in West Wales. His friend Leuan arrives offering recovery - in the form of a capsule containing MDMA, with which he claims to have successfully treated his own post-traumatic stress. Zach and Leuan swing between dreamboat heroism and woozy enlightenment via an exchange on patriotism, conflict and supermarket shopping."

**12 October:** Bridport Arts Centre, South Street, BRIDPORT, DT6 3NR. 8pm. £13 / £11. 01308 424204 / [bridport-arts.com](http://bridport-arts.com).

### 'THE HABIT OF ART'

**17 - 22 September**  
Salisbury Playhouse, Malthouse Lane, SALISBURY, SP2 7RA. 7.30pm (Thursday and Saturday matinee 2.15pm). £27 / £13. 01722 320333.  
"Alan Bennett's play about a meeting between the poet WH Auden and the composer Benjamin Britten. Exploring friendship, rivalry and heartache, this multi-layered masterpiece stars the Olivier Award-winning Matthew Kelly and David Yelland."

### KOKORO: 'A NIGHT IN VIENNA'

**19 September**  
Dorchester Arts, The Corn Exchange, High East Street, DORCHESTER, DT1 1HF. 7.30pm. £15 / £13. 01305 266926.

### 'THE GOON SHOW'

**19 September**  
The Brewhouse Theatre, Coal Orchard, TAUNTON, TA1 1JL. 7.30pm. £17. 01823 283244. See 4 - 8 September.

### TAIKO MEANTIME: 'RESONANCE'

**19 September**  
Northcott Theatre, Stocker Road, EXETER, EX4 4QB. 7.30pm. £24.50 / £12.50. [exeternorthcott.co.uk](http://exeternorthcott.co.uk).

### 'THE BEAUTY QUEEN OF LEENANE'

**19 - 22 September**  
Lighthouse, Kingland Road, POOLE, BH5 1UG. 8pm (Thursday and Saturday matinee 2pm). [lighthouse.co.uk](http://lighthouse.co.uk).



### 'INVISIBLE MUSIC'

**21 September**  
Marine Theatre Church Street, LYME REGIS, DT7 3QB. 7pm. £12 / £10. 01297 442138 / [marinetheatre.com](http://marinetheatre.com).  
"An unforgettable experience. Pete Flood (Bellowhead) has created a 5-piece band full of acoustic delights, supported by stunning projections, that are mesmerising, evocative, celebratory and profoundly moving."

### KATE DANIELS QUARTET + NILS SOLBERG

**21 September**  
Ilminster Arts Centre, The Meeting House, East Street, ILMINSTER, TA19 0AN. 8pm. £17. 01460 54973.

### ROGER MCGOUGH AND LITTLE MACHINE

**21 September**  
Dorchester Arts, The Corn Exchange, High East Street, DORCHESTER, DT1 1HF. 7.30pm. £19 / £17 / £5. 01305 266926. "Vintage, classic and surprising poems set to music."

### THE SEEN

**21 September**  
The Hilda Coles Learning Centre, The Priest's House Museum, 23 - 27 High Street, WIMBORNE, BH21 1HR. 7.30pm. £10 / £5. 01202 882533.  
"Mark Wastell has been organising The Seen since 2001. No formation has ever been repeated, The Seen never stays static. The Seen's south west debut will feature local improvisors."



### ANGELA BROWNRIDGE

**21 and 22 September**  
Tincleton Gallery, The Old School House, TINCLETON, near Dorchester, DT2 8QR. 7.30pm. £12. 01305 848909 / [tincletongallery.com](http://tincletongallery.com). "Angela Brownridge's performances are passionate, rhapsodic and totally compelling, she is a marvellously exciting artist, and a wonderfully assertive pianist with a strong sense of musical structure."

### YEOVIL SUPER SATURDAY

**22 September**  
Locations throughout Town Centre, YEOVIL, Somerset. 10am - 4pm. 01935 382424. "Talented musicians give up their own time to busk for a chosen charity (this year School in a Bag) throughout the town centre, providing a melodic backdrop to other activities that include children's craft workshops, market stalls, performance and dance."

### 'SHACKLETON'S CARPENTER'

**22 September**  
Bridport Arts Centre, South Street, BRIDPORT, DT6 3NR. 7.30pm. £13 / £11. 01308 424204 / [bridport-arts.com](http://bridport-arts.com).

### 'THE RAF IN CONCERT'

**23 September**  
Lighthouse, Kingland Road, POOLE, BH5 1UG. 3pm. [lighthouse.co.uk](http://lighthouse.co.uk).

### 'THE GOON SHOW'

**25 and 26 September**  
Lighthouse, Kingland Road, POOLE, BH5 1UG. 7.45pm. 01202 280000 / [lighthouse.co.uk](http://lighthouse.co.uk). See 4 - 8 September.

### 'W-RAP'

**26 September**  
Lighthouse, Kingland Road, POOLE, BH5 1UG. 8pm. [lighthouse.co.uk](http://lighthouse.co.uk).  
"From bakelite through to tupperware, nylons through to vinyl and current developments in 'eco-plastics' and beyond, this new experimental music-theatre work explores the light and dark faces of plastic in our times. A collaboration between the Museum of Design in Plastics (MoDiP), composer Karen Wilmhurst and director Katharine Piercy."

### JESSICA FOSTEKEW

**26 September**  
Bridport Arts Centre, South Street, BRIDPORT, DT6 3NR. 8pm. £8 / £6. [bridport-arts.com](http://bridport-arts.com). Comedy.

### 'THE FOSSIL LADY OF LYME'

**26 September**  
Village Hall, Vicarage Street, TINTINHULL, BA22 8PY. 7.30pm. £10. 01935 822376.

### 'A PURE WOMAN'

**27 - 30 September**  
Dorchester Arts, The Corn Exchange, High East Street, DORCHESTER, DT1 1HF. Thursday - Saturday 8pm, Sunday 2.30pm. £14 / £12. 01305 266926 / [dorchesterarts.org.uk](http://dorchesterarts.org.uk). "Thomas Hardy, 84, falls in love with a Dorset woman in her 20s playing Tess in the local amateur Hardy Players' production. Hardy's second wife, Florence, in her 40s, is driven into a jealous rage. Based on true events."

## SUBSCRIBE TO EVOLVER

£24 (6 issues starting with EVOLVER 107 (November / December 2018 issue))

NAME
ADDRESS
POSTCODE

Send cheque (payable to 'Evolver Media') to:  
EVOLVER MEDIA, 8 BUCKLAND ROAD, PEN MILL TRADING ESTATE,  
YEOVIL, SOMERSET BA21 5EA

## CONTEMPORARY MUSIC WRITERS WANTED

Please email examples of your writing to:  
[simon@evolver.org.uk](mailto:simon@evolver.org.uk)

## EVOLVER

THE FREE WESSEX ARTS AND CULTURE GUIDE



# PERFORMANCE



## THE WEDDING RECEPTION

"Four actors play nine characters in a whirlwind two hours full of laughter, love and tears."

**13 - 15 September:** Lighthouse, Kingland Road, POOLE, BH5 1UG. 7.30pm. 01202 280000 / lighthouse.co.uk.

### DAVE NEWTON & CRAIG MILVERTON

**28 September**  
Ilminster Arts Centre, The Meeting House, East Street, ILMINSTER, TA19 0AN. 8pm. £16. 01460 54973. "Jazz."

### FEROCEOUS DOG

**28 September**  
The Beehive, Dowell Street, HONITON, EX14 1LZ. 8pm. £18 / £16.50. 01404 384050 / beehivehoniton.co.uk.

### 'ABOVE OUR HEADS'

**28 September**  
Lighthouse, Kingland Road, POOLE, BH5 1UG. 7.30pm. 01202 280000 / lighthouse.co.uk. "This very special concert remembers internationally renowned jazz drummer, composer, music educator and former Dorset resident Steve Harris ten years after he joined the great gig in the sky."



### JAMIE SMITH'S MABON

**28 September**  
Memorial Hall, STURMINSTER MARSHALL, BH21 4BQ. 7.30pm. £10 / £6. 07903 057427 / artsreach.co.uk.

### ROBB JOHNSON

**28 September**  
Village Pump, The Lamb Inn, Mortimer Street, TROWBRIDGE, BA14 8BN. 8pm. £10. 01225 865107. "One of the country's best cutting-edge contemporary songwriters."

### BARNSTORMERS COMEDY NIGHT

**28 September**  
Salisbury Arts Centre, Bedwin Street, SALISBURY, SP1 3UT. 8.30pm. £12. 01722 320333 / wiltshirecreative.co.uk.

### 'CHARLEY'S AUNT'

**28 and 29 September**  
Studio Theatre, Ashley Road, SALISBURY, SP2 7TN. 7.30pm. 01722 342860. "A frothy soufflé of mistaken identities and narrow squeaks involving three undergraduates, three young ladies and a glamorous aunt from Brazil 'where the nuts come from'."

### JAMIE SMITH'S MABON

**29 September**  
Village Hall, STUDLAND, BH19 3AE. 7.30pm. £10 / £6. 01929 450204.

### 'ME AND MY BEE'

**29 September**  
Salisbury Playhouse, Malthouse Lane, SALISBURY, SP2 7RA. 11am and 2pm. £9. wiltshirecreative.co.uk.

### AL O'KANE

**29 September**  
Salisbury Arts Centre, Bedwin Street, SALISBURY, SP1 3UT. 12noon. 01722 320333. "Al's music is a cry for action nestled into a fiery acoustic blend."



### PHIL NICHOL: 'YOUR WRONG'

**29 September**  
Lighthouse, Kingland Road, POOLE, BH5 1UG. 7.30pm. lighthouse.co.uk. "The pressure to 'get it right' is tremendous! Right? Your Wrong questions the nature of understanding and explores our modern day need to be right about everything."

### 'SANGRE FLAMENCA'

**29 September**  
The Brewhouse Theatre, Coal Orchard, TAUUNTON, TA1 1JL. 7.30pm. £12.50. 01823 283244 / thebrewhouse.net.

### 'BEAT SAFARI'

**29 and 30 September**  
Bridport Arts Centre, South Street, BRIDPORT, DT6 3NR. £7. 9pm. 01308 424204 / bridport-arts.com.



## YEoViL SUPER SaTUrDay

**22 SEPTEMBER 2018**

Yeovil Town Centre

BUSKFEST, BUGFEST, ALL THE FUN OF THE FAIR, CRAFT FAIR, MARKET STALLS, BIKE TRICKS, WORKSHOPS, CHILDREN'S ACTIVITIES, GARDENING CELEBRATIONS AND LOTS MORE!



facebook.com/yeovilsupersaturday



DRAMA PASSION

yeovil literary festival

**25 - 29 October 2018**



Festival Highlights: Alan Johnson, Lucy Worsley, Martin Hughes-Games and Iolo Williams, Ruby Wax, Paddy Ashdown, William Roche, Benedict Allen, Gregg Wallace, Baroness Floella Benjamin

01935 422884 • yeovilliteraryfestival.co.uk





THE BARR BROTHERS



TUNE-YARDS



JAKE BUGG



IBIBIO SOUND MACHINE

LARMER TREE FESTIVAL 2018

Photographs by Will Wilkinson



GOAT GIRL



FIRST AID KIT



# PERFORMANCE

## BOURNEMOUTH ARTS BY THE SEA FESTIVAL

**29 September - 6 October**  
BOURNEMOUTH, Dorset.  
artsbythesea.co.uk.

### PAUL YOUNG

**30 September**  
Lighthouse, Kingland Road, POOLE,  
BH5 1UG. 7.30pm. lighthouse.co.uk.

### JOSIENNE CLARKE AND BEN WALKER

**30 September**  
Village Hall, Shortlake Lane,  
OSMINGTON, Weymouth, DT2 6FT.  
7pm. £12. 07816 832554.

### MARTIN HARLEY + DANIEL KIMBRO

**30 September**  
The Beehive, Dowell Street, HONITON,  
EX14 1LZ. 7.30pm. £17 / £15. 01404  
384050 / beehivehoniton.co.uk.

### 'THE PLAY THAT GOES WRONG'

**1 - 6 October**  
Lighthouse, Kingland Road, POOLE,  
BH5 1UG. 7.45pm (Wednesday and  
Saturday matinees 2.30pm). 01202  
280000. "Brilliantly funny comedy that's  
guaranteed to leave you aching with  
laughter!"

### 'THE GARDEN'

**2 and 3 October**  
Salisbury Arts Centre, Bedwin Street,  
SALISBURY, SP1 3UT. 11am and 2pm.  
£5. 01722 320333. "Take a journey  
through the seasons in this multi-  
sensory, non-verbal performance."

### 'CHARLEY'S AUNT'

**2 - 6 October**  
Studio Theatre, Ashley Road,  
SALISBURY, SP2 7TN. 7.30pm. 01722  
342860. See 28 and 29 September.



### 'OVER THE WALL PICKING APPLES'

**3 October**  
The Lyric Theatre, BRIDPORT, DT6  
3LX. 8pm. £12 / £10. 01308 424901.  
"Join Richard on his emotional roller-  
coaster as he squares up to the  
frightening, the furious and the funny  
sides of mad. It's no laughing matter -  
but it will make you laugh."



## FAITH I BRANKO

"Faith i Branko guarantee a sensational, authentic experience of Roma music straight from the village of Gornja Grabovica, Serbia. Expect a joyous, passionate, boisterous, fiery and spirited performance."

**5 October:** Village Hall, PORTESHAM, DT3 4NS. 7.30pm. 01305  
871035.

**6 October:** Comrades Hall, BROADWINDSOR, DT8 3QP. 7.30pm. £9 /  
£6. 01308 867644.

**7 October:** Village Hall, MILBORNE ST ANDREW, DT11 0JX. 7.30pm. £9  
/ £6. 01258 839230.

### BOURNEMOUTH SYMPHONY ORCHESTRA: 'MONUMENTAL MAHLER'

**3 October**  
Lighthouse, Kingland Road, POOLE,  
BH5 1UG. 7.30pm. lighthouse.co.uk.

### JASMIN VARDIMON COMPANY: 'MEDUSA'

**3 - 5 October**  
Northcott Theatre, Stocker Road,  
EXETER, EX4 4QB. 7.30pm. £21.50 /  
£13.50. exeternorthcott.co.uk.  
"Created on the coast of Barcelona and  
inspired by its marine life, Jasmin  
Vardimon presents her new work."

### RALPH MCTELL

**4 October**  
The Brewhouse Theatre, Coal Orchard,  
TAUNTON, TA1 1JL. 7.30pm. £25.  
01823 283244 / thebrewhouse.net.

### PETROV & ULLMAN

**4 October**  
Lower Pulworthy, HIGHAMPTON,  
Hatherleigh, Devon, EX21 5LQ.  
7.30pm. £15. 01837 810940. "Cello  
and piano duo playing Beethoven,  
Schumann and Rachmaninov."

### REIKO FUJISAWA

**4 October**  
Lighthouse, Kingland Road, POOLE,  
BH5 1UG. 1.05pm. lighthouse.co.uk.

### 'OUR FINEST HOUR'

**4 October**  
Lighthouse, Kingland Road, POOLE,  
BH5 1UG. 7.30pm. lighthouse.co.uk.

### 'WE CAN TIME TRAVEL'

**4 - 6 October**  
Salisbury Playhouse, Malthouse Lane,  
SALISBURY, SP2 7RA. 7.45pm. £13.50 /  
£9. wiltshirecreative.co.uk.

## SWANAGE BLUES FESTIVAL

**4 - 7 October**  
Locations in and around SWANAGE,  
Dorset. swanage-blues.org.

### 'HER NAKED SKIN'

**4 - 20 October**  
Salisbury Playhouse, Malthouse Lane,  
SALISBURY, SP2 7RA. 01722 320333 /  
wiltshirecreative.co.uk. 7.30pm  
(Thursday and Saturday matinee  
2.15pm from 11 October). £27 / £12.  
"Regional premiere of Rebecca  
Lenkiewicz's Suffragette drama to mark  
100 years since women got the vote."

### NINEBARROW

**5 October**  
Dorchester Arts, The Corn Exchange,  
High East Street, DORCHESTER, DT1  
1HF. 8pm. £15 / £13 / £5. 01305  
266926 / dorchesterarts.org.uk.

### 'BEYOND THE BARRICADE'

**5 October**  
The Brewhouse Theatre, Coal Orchard,  
TAUNTON, TA1 1JL. 7.30pm. £23.50.  
01823 283244 / thebrewhouse.net.

### 'INVISIBLE MUSIC'

**5 October**  
Salisbury Arts Centre, Bedwin Street,  
SALISBURY, SP1 3UT. 3.30 and 8pm.  
£12 / £10. 01722 320333. See 21  
September.

### 'POT'

**5 October**  
The Brewhouse Theatre, Coal Orchard,  
TAUNTON, TA1 1JL. 7.30pm. £9.50.  
01823 283244 / thebrewhouse.net.

### CHRIS FOSTER

**5 October**  
Village Pump, The Lamb Inn, Mortimer  
Street, TROWBRIDGE, BA14 8BN.  
8pm. £10. 01225 865107. "Originally  
from Somerset and now based in  
Iceland. A rare chance to see this  
skilled interpreter of traditional and  
contemporary folk music."

### 'A PURE WOMAN'

**5 October**  
Lighthouse, Kingland Road, POOLE,  
BH5 1UG. 8pm. lighthouse.co.uk. See  
27 - 30 September.

### LUKE WRIGHT

**5 October**  
Bridport Arts Centre, South Street,  
BRIDPORT, DT6 3NR. 8pm. £13 / £11.  
bridport-arts.com. Comedy.

### PETROV & ULLMAN

**5 October**  
Bridport Arts Centre, South Street,  
BRIDPORT, DT6 3NR. 11am. £10.  
bridport-arts.com. See 4 October.

# STOGURSEY

# ARTS

# FESTIVAL

12TH - 16TH  
SEPTEMBER  
2018

EXHIBITIONS OF FINE ART, CRAFT, PAINTING,  
AND SCULPTURE, CRAFT FAYRE, FLOWER FESTIVAL,  
MUSIC GALA, LIGHT UP STOGURSEY TRAIL, TALKS,  
PERFORMANCES AND WORKSHOPS

FOLLOW US ON

STOGURSEYARTSFESTIVAL

See local press, posters and Stogursey News at  
Stogursey-online for programme details.



# PERFORMANCE

## PETROV & ULLMAN

5 October

Ilminster Arts Centre, The Meeting House, East Street, ILMINSTER, TA19 0AN. 8pm. £15. 01460 54973. See 4 October.

## THE JAZZ DEFENDERS

5 October

Bocabar, The Red Brick Building, Morland Road, GLASTONBURY, BA6 9EW. 7.30pm. £6. 01458 440558 / glastonburybocabar.co.uk. "A celebration of classic blue note jazz."

## 'TWISTED TALES'

5 October

Village Hall, WEST LULWORTH, BH20 5SG. 7.30pm. £9 / £6. 01929 400790.

## 'TWISTED TALES'

6 October

Village Hall, BROADMAYNE, DT2 8EW. 7.30pm. £9 / £6. 07443 659912.

## PETROV & ULLMAN

6 October

The Dance House, Gouldsbrook View, North Street, CREWKERNE, TA18 7AL. 7.30pm. £15. concertsinthewest.org. See 4 October.

## 'NOT ABOUT HEROES'

6 October

The Brewhouse Theatre, Coal Orchard, TAUNTON, TA1 1JL. 7.30pm. £11. 01823 283244 / thebrewhouse.net.

"Stephen Macdonald's play about the unique friendship between celebrated World War One poets Wilfred Owen and Siegfried Sassoon."

## SOUL FAMILY

6 October

Lighthouse, Kingland Road, POOLE, BH5 1UG. 7pm. 01202 280000 / lighthouse.co.uk. "Come and enjoy a fun celebration of music spanning the 40 years since Lighthouse first opened its doors. The concert will be followed by DJs in the bar so you can celebrate Lighthouse's birthday until late!"

## RACHEL HARRINGTON

6 October

Lighthouse, Kingland Road, POOLE, BH5 1UG. 8pm. lighthouse.co.uk. "The music of Oregon-born Rachel Harrington captures the stories and heritage of The West."

## 'KING LEAR RETOLD'

7 October

Dorchester Arts, The Corn Exchange, High East Street, DORCHESTER, DT1 1HF. 7.30pm. £12 / £10 / £5. 01305 266926. "Shakespeare retold for everyone - and especially those who think Shakespeare is 'not for them'."



## GABRIELLE DUCOMBLE

"Blending suave tones with natural charm and sophistication, Belgian chanteuse Gabrielle Ducomble presents a night of French chanson, modern jazz, Brazilian choros and tango."

4 October: Dorchester Arts, The Corn Exchange, High East Street, DORCHESTER, DT1 1HF. 8pm. £14 / £12 / £5. 01305 266926 / dorchesterarts.org.uk.

## 'ME AND MY BEE'

7 October

Dorchester Arts, The Corn Exchange, High East Street, DORCHESTER, DT1 1HF. 2.15pm. £8 / £6. 01305 266926.

## 'TWISTED TALES'

7 October

Village Hall, HALSTOCK, BA22 9SG. 7.30pm. £9 / £6. 01935 891744.

## 'WINDRUSH: MOVEMENT OF THE PEOPLE'

9 and 10 October

Bristol Old Vic, King Street, BRISTOL, BS1 4ED. £20 / £12. bristololdvic.org.uk. "Featuring an uplifting soundtrack from calypso, jazz and blues to ska, gospel and reggae, Windrush: Movement of the People is a lively celebration of the rise of multicultural Britain."

## 'NOT ABOUT HEROES'

10 October

Dorchester Arts, The Corn Exchange, High East Street, DORCHESTER, DT1 1HF. 8pm. £15 / £13 / £5. 01305 266926. See 6 October.

## BOURNEMOUTH SYMPHONY ORCHESTRA: 'DIVINE SUBLIME'

10 October

Lighthouse, Kingland Road, POOLE, BH5 1UG. 7.30pm. lighthouse.co.uk.

## NICK HARPER: 'A WILTSHIRE TALE'

11 October

Lighthouse, Kingland Road, POOLE, BH5 1UG. 8pm. lighthouse.co.uk. See 14 and 15 September.



## MY SWEET PATOOTIE

11 October

Memorial Hall, PIDDLTRENTHIDE, DT2 7QF. 7.30pm. £10 / £6. 01300 348247 / artsreach.co.uk.

## 'FLOODS'

11 - 13 October

Salisbury Playhouse, Malthouse Lane, SALISBURY, SP2 7RA. 7.45pm. £13.50 / £9. 01722 320333. "An irreverent and stylistically inventive piece about fear and the future."

## 'DON CARLOS'

11 - 20 October

Northcott Theatre, Stocker Road, EXETER, EX4 4QB. 7.30pm (Wednesday and Saturday matinee 2.30pm). £30.50 / £22. 01392 726363.

## MY SWEET PATOOTIE

12 October

Village Hall, WOOTTON FITZPAINE, DT6 6NF. 7.30pm. £9 / £6. 01297 560948 / artsreach.co.uk.

## DEBRA STEPHENSON: 'NIGHT OF 100 VOICES'

12 October

Lighthouse, Kingland Road, POOLE, BH5 1UG. 7.30pm. lighthouse.co.uk.

## BLUE ROSE CODE + ADAM SWEET

12 October

Dorchester Arts, The Corn Exchange, High East Street, DORCHESTER, DT1 1HF. 8pm. £13 / £11. 01305 266926. "Folk, jazz, soul and pop."

## HEATWAVE + ODYSSEY

12 October

Lighthouse, Kingland Road, POOLE, BH5 1UG. 7.30pm. lighthouse.co.uk. "Non-stop dancefloor anthems."

## KAREN SHARP & ROBERT FOWLER QUINTET

12 October

Lighthouse, Kingland Road, POOLE, BH5 1UG. 8pm. 01202 280000. "Jazz."

## CITY STEAM JAZZ BAND

12 October

Ilminster Arts Centre, The Meeting House, East Street, ILMINSTER, TA19 0AN. 8pm. £15. 01460 54973.

## THE TWO MOORS FESTIVAL

12 - 21 October

Locations across DARTMOOR and EXMOOR. thetwomoorsfestival.co.uk / 01392 665885. "Ten days of chamber music in and around Dartmoor and Exmoor's national parks."

## 'COASTAL COMEDY'

13 October

Lighthouse, Kingland Road, POOLE, BH5 1UG. 8pm. lighthouse.co.uk.

## RUSSIAN STATE OPERA: 'MADAMA BUTTERFLY'

13 October

Lighthouse, Kingland Road, POOLE, BH5 1UG. 7.45pm. lighthouse.co.uk.

SEPTEMBER 2011 / FREE

**BRIDPORT TIMES**

A MONTHLY CELEBRATION OF PEOPLE, PLACE AND PERVERSION

THE BIG PICTURE

# BRIDPORT TIMES

A MONTHLY CELEBRATION OF PEOPLE, PLACE AND PERVERYOR

## OUT NOW AND ONLINE

bridporttimes.co.uk



# PERFORMANCE



## FAGIN'S TWIST

"See Dickens' *Oliver Twist* in a new light as Tony Adigun's Avant Garde Dance flips your expectations of five familiar characters, with their unmatched contemporary hip hop style."

**9 and 10 October:** Lighthouse, Kingland Road, POOLE, BH5 1UG.  
7.45pm. 01202 280000 / lighthouse.co.uk.

### MY SWEET PATOOTIE

**13 October**

Village Hall, IBBERTON, DT11 0EL.  
7.30pm. £9.50 / £6.50. 01258 817269.

### MY SWEET PATOOTIE

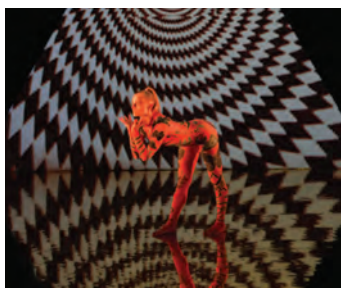
**14 October**

Village Hall, STUDLAND, BH19 3AE.  
7.30pm. £10 / £6. 01929 450204.

### MARCUS BRIGSTOCKE

**16 October**

The Brewhouse Theatre, Coal Orchard,  
TAUNTON, TA1 1JL. 7.30pm. £17.  
01823 283244 / thebrewhouse.net.



### ROSIE KAY DANCE CO: 'MK ULTRA'

**16 October**

Strode Theatre, Church Road, STREET,  
BA16 0AB. 7.30pm. £15.50 / £12.50.  
01458 442846 / strodetheatre.org.uk.

"A thrilling dance piece exploring the rise of conspiracy theory in pop culture as young people turn away from established political systems, created by Commonwealth Games choreographer Rosie Kay and BAFTA-winning filmmaker Adam Curtis."

### PETE ALLEN'S HOT SEVEN + BEN HOLDER

**17 October**

The Brewhouse Theatre, Coal Orchard,  
TAUNTON, TA1 1JL. 7.30pm. £18.  
01823 283244. "Happy jazz and fun."

### BOURNEMOUTH SYMPHONY ORCHESTRA: 'MASTERS OF MELODY'

**17 October**

Lighthouse, Kingland Road, POOLE,  
BH5 1UG. 7.30pm. lighthouse.co.uk.

### MARK CHADWICK

**17 October**

Town Hall Arts, Market Street,  
TROWBRIDGE, BA14 8EQ. 7.30pm.  
£15. sheermusic.co.uk.

### 'A PURE WOMAN'

**17 October**

The Exchange, STURMINSTER  
NEWTON, DT10 1FH. 7.30pm. £10 /  
£8. 01258 475137 / artsreach.co.uk.  
See 27 - 30 September.

### SHEBA SOUL ENSEMBLE:

'LOVESPLAY'

**18 October**

Tacchi-Morris Arts Centre, School Road,  
Monkton Heathfield, TAUNTON, TA2  
8PD. 7.30pm. £17.50 / £14.50 / £12.  
01823 414141 / tacchi-morris.com.

### LIVING SPIT: 'GIANTS OF SCIENCE'

**18 October**

Village Hall, MELBURY OSMOND, DT2  
0NL. 8pm. £9 / £6. 01935 83453.

### 'HMS PINAFORE' + 'TRIAL BY JURY'

**18 - 20 October**

Lighthouse, Kingland Road, POOLE,  
BH5 1UG. 7.30pm (Saturday matinee  
2.30pm). lighthouse.co.uk.

"Bournemouth Gilbert and Sullivan  
Society perform a lively double bill."

### LIVING SPIT: 'GIANTS OF SCIENCE'

**19 October**

Village Hall, WEST STAFFORD, DT2  
8AG. 8pm. £9 / £6. artsreach.co.uk.



### FIERCE FLOWERS

**19 October**

Village Hall, LANGTON MATRAVERS,  
BH19 3HA. 7.30pm. £9 / £6. 01929  
423834. "Fierce Flowers is a young  
Parisian musical trio, born out of the  
Parisian Old-time and Bluegrass scene.  
Their individual eclectic influences  
infuse their original compositions in  
French and English, as well as their  
vocal harmonies and instrumentation  
(violin, banjo, guitar, double bass),  
creating a veritable voyage on stage."

# Concerts IN THE West

CINW PROMOTING SOME OF THE BEST YOUNG  
MUSICIANS WORKING IN THE UK TODAY.

**15 FEBRUARY TO 6 OCTOBER 2018**

**BAROQUE TO CONTEMPORARY**

**2018 TOURS IN DEVON, DORSET AND SOMERSET**

BRIDPORT - BRYMPTON - CREWKERNE - HATHERLEIGH - ILMINSTER  
PENDOMER - SHUTE - TAUNTON



**6, 7, 8 SEPTEMBER**

**PIXELS ENSEMBLE**

IAN BUCKLE PIANO - SOPHIE ROSA VIOLIN  
ALEX HOLLADAY CELLO

**4, 5, 6 OCTOBER**

MICHAEL PETROV CELLO &  
ALEXANDER ULLMAN PIANO

## CONCERTS IN THE WEST 2019

TRIO SORA - SARA DEBORAH TIMOSSI - MELA GUITAR QUARTET

ALASDAIR BEATSON & ELISSA CASSINI - MORIARY WINDS

CLARE HAMMOND - EUSEBIUS QUARTET - NATHANIEL BOYD & SIMON LANE

CONSONE QUARTET - RUISI QUARTET

[www.concertsinthewest.org](http://www.concertsinthewest.org)

concertsinthewest@gmail.com - CATHERINE MADDOCKS (HODGSON) director

# HERVEY



**SATURDAY 27 OCTOBER**  
7.30PM • £15 / £12

**BRIDPORT  
ARTSCENTRE**

9 SOUTH STREET  
BRIDPORT DT6 3NR  
01308 424204  
bridport-arts.com



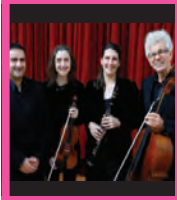


OPERA

## I CAPULETI E I MONTECCHI

BELLINI'S TRAGIC ROMEO AND JULIET  
(OPERA HOLLOWAY)  
FRIDAY 14 SEPTEMBER

Be thrilled by this passionate interpretation of a classic love story.



CLASSICAL MUSIC

## KOKORO A NIGHT IN VIENNA

Bournemouth Symphony Orchestra's music ensemble presents an evening of music from the 2nd Viennese School.



MUSIC

## ROGER MCGOUGH AND LITTLE MACHINE

A fine selection of vintage, classic and surprising poems set to music. Music that moves the feet for words that move the soul!



THEATRE

## A PURE WOMAN

POONAMALLEE PRODUCTIONS  
DORCHESTER ARTS CO-PRODUCTION  
THURS 27 - SUN 30 SEPT  
The story of 84 year-old Thomas Hardy, his second wife Florence and the young Dorset woman who played Tess of the D'Urbervilles.

For full event listings, visit our website

Dorchester Arts, The Corn Exchange, High East Street, Dorchester DT1 1HF

f t i Dorchesterarts | 01305 266926 | www.dorchesterarts.org.uk | Charity No. 1015546

## PERFORMANCE



## MR & MRS CLARK: (F.E.A.R.)

"A one-man show about constructed fear that asks directly if the world wants us to feel safe."

**10 and 11 October:** The Lyric Theatre, BRIDPORT, DT6 3LX. 8pm. £12 / £5. 01308 424901 / bridportandwestbay.co.uk.

## ANT NOEL WITH THE PEABODY DRAKES + LONELY TOURIST

**19 October**  
Bocabar, The Red Brick Building,  
Morland Road, GLASTONBURY, BA6  
9EW. 8pm. £5. 01458 440558.

## EUROPEAN UNION CHAMBER ORCHESTRA

**19 October**  
The Brewhouse Theatre, Coal Orchard,  
TAUNTON, TA1 1JL. 7.30pm. £22.  
01823 283244 / thebrewhouse.net.

## FIERCE FLOWERS

**21 October**  
Village Hall, TARRANT GUNVILLE,  
DT11 8JN. 7.30pm. £9 / £6. 01258  
830361. See 19 October.

## 'THE PIXIES' SCARF'

**22 October**  
Dorchester Arts, The Corn Exchange,  
High East Street, DORCHESTER, DT1  
1HF. 2.30pm. £8 / £6. 01305 266926.  
"A most unforgettable adventure!"

## 'SALAD DAYS'

**22 - 27 October**  
Salisbury Playhouse, Malthouse Lane,  
SALISBURY, SP2 7RA. 7.30pm. £27 /  
£13. wiltshirecreative.co.uk. "One of  
Britain's best-loved and sunniest  
musicals. Julian Slade and Dorothy  
Reynolds' award winning show is an  
absolute romp of polite naughtiness  
and saucy encounters."

## 'THE TALE OF THE COCKATRICE'

**23 October**  
Lighthouse, Kingland Road, POOLE,  
BH5 1UG. 2 and 7pm. 01202 280000 /  
lighthouse.co.uk. "An exciting piece of  
original theatre for all the family."

## MERELY THEATRE: 'MACBETH'

**23 October**  
Tacchi-Morris Arts Centre, School Road,  
Monkton Heathfield, TAUNTON, TA2  
8PD. 7.30pm. £14 / £9. 01823 414141.

## 'LILY AND THE ALBATROSS'

**23 October**  
Village Hall, BUCKLAND NEWTON,  
DT2 7BZ. 4pm. £6 / £5. 01300 345455.

## BOURNEMOUTH SYMPHONY ORCHESTRA: 'SONGS FROM THE HEART'

**24 October**  
Lighthouse, Kingland Road, POOLE,  
BH5 1UG. 7.30pm. lighthouse.co.uk.

## 'LILY AND THE ALBATROSS'

**24 October**  
Village Hall, BOURTON, SP8 5BJ. 3pm.  
£6 / £5. 01747 840057 /  
artsreach.co.uk. See 23 October.

## BARELY METHODICAL TROUPE: 'SHIFT'

**24 and 25 October**  
Lighthouse, Kingland Road, POOLE,  
BH5 1UG. 7.45pm. lighthouse.co.uk.  
"Four extraordinary performers explore  
their physical limits in an explosive  
display of power-based acrobatics."



## THE RSVP BHANGRA BAND

**19 October**  
Ilminster Arts Centre, The Meeting  
House, East Street, ILMINSTER, TA19  
0AN. 8pm. £20. 01460 54973.

## BOURNEMOUTH SYMPHONY CHORUS: 'THE ARMED MAN - A MASS FOR PEACE'

**20 October**  
Lighthouse, Kingland Road, POOLE,  
BH5 1UG. 7.30pm. lighthouse.co.uk.

## MARK CHADWICK + JAKE MARTIN + PAUL HENSHAW + NICK PARKER

**20 October**  
Bocabar, The Red Brick Building,  
Morland Road, GLASTONBURY, BA6  
9EW. 8pm. £15 / £12.50. 01458 440558  
/ glastonburybocabar.co.uk.

## LIVING SPIT: 'GIANTS OF SCIENCE'

**20 October**  
Village Hall, STALBRIDGE, DT10 2NF.  
8pm. £13. 01963 362355.

## FIERCE FLOWERS

**20 October**  
Powerstock Hut, POWERSTOCK, DT6  
3TB. 7.30pm. £9 / £6. 01308 485474 /  
artsreach.co.uk. See 19 October.

## LIVING SPIT: 'GIANTS OF SCIENCE'

**21 October**  
Village Hall, DRIMPTON, DT8 3RF.  
7.30pm. £9 / £6. 01308 867617.



Connecting Rural Dorset  
with the Arts

## NEW AUTUMN SEASON

of professional theatre, music and dance across the County



Sarajevo Big Bang

See our full programme of events and book tickets online at:  
**www.artsreach.co.uk**  
Tel: 01305 269512 | info@artsreach.co.uk | Charity no. 1058198



# PERFORMANCE

## 'BULLY BEEF AND WHIZZBANGS'

24 and 25 October

Black Box Theatre, Studio Theatre, Ashley Road, SALISBURY, SP2 7TN. 7.30pm. £10. 01722 342860. "As the centenary of the Armistice draws near, Blackbox Theatre brings Chris Hawley's multi-award winning play, set in the trenches of the French battlefields."

## RONNIE SCOTT'S ALL STARS

25 October

Lighthouse, Kingland Road, POOLE, BH5 1UG. 7.30pm. lighthouse.co.uk.

## PAMELA'S ALL STARS JAZZ BAND

25 October

Martock Church, MARTOCK, TA12 6JL. 7.30pm. £9 / £8. 07955 467896. "New Orleans jazz and popular tunes."

## 'GUTTED'

25 October

Lighthouse, Kingland Road, POOLE, BH5 1UG. 8pm. lighthouse.co.uk.

## 'AN ENEMY OF THE PEOPLE'

25 - 27 October

Salisbury Playhouse, Malthouse Lane, SALISBURY, SP2 7RA. 7.45pm. £13.50 / £9. wiltshirecreative.co.uk.

## BARNSTORMERS COMEDY NIGHT

26 October

Salisbury Arts Centre, Bedwin Street, SALISBURY, SP1 3UT. 8.30pm. £12 / £11. wiltshirecreative.co.uk.

## JULIAN STRINGLE DREAM BAND

26 October

Ilminster Arts Centre, The Meeting House, East Street, ILMINSTER, TA19 0AN. 8pm. £22. 01460 54973 / themeeetinghouse.org.uk. "Gentle jazz."

## CAMILLA GEORGE QUARTET

26 October

Lighthouse, Kingland Road, POOLE, BH5 1UG. 8pm. 01202 280000. "Jazz."

## TRIO ISIMSIZ

26 October

St Michael's Church, St Michael's Hill, MILVERTON, TA4 1JS. 7.30pm. £17 / £15 / £10 / £2. 03336 663366 / milvertonconcerts.org.

## HANNAH SANDERS AND BEN SAVAGE

26 October

Dorchester Arts, The Corn Exchange, High East Street, DORCHESTER, DT1 1HF. 8pm. £13 / £11 / £5. 01305 266926 / dorchesterarts.org.uk. "Folk."

## 'LITTLE BABY BUM'

26 - 28 October

Lighthouse, Kingland Road, POOLE, BH5 1UG. Friday 3.30pm, Saturday and Sunday 11am and 2.30pm. 01202 280000 / lighthouse.co.uk.



## POLICE DOG HOGAN

"Police Dog Hogan are a high-energy and eclectic eight-piece, combining fiddle, trumpet, mandolin, drums and guitars with four-part harmonies in an exuberant and genre-defying fusing of country, pop, folk, and rocking urban bluegrass. Much-loved Guardian columnist Tim Dowling adds his banjo to the musical mix."

**6 October:** Bridport Arts Centre, South Street, BRIDPORT, DT6 3NR. 8pm. £17 / £16. 01308 424204 / bridport-arts.com.



## 'HERVEY'

27 October

Bridport Arts Centre, South Street, BRIDPORT, DT6 3NR. 7.30pm. £15 / £12. 01308 424204 / bridport-arts.com.

"Hervey tells the story - at once shocking and funny - of the feud between King George II and his son Frederick, Prince of Wales."

## GRAFFITI CLASSICS

27 October

Dorchester Arts, The Corn Exchange, High East Street, DORCHESTER, DT1 1HF. 8pm. £14 / £12 / £5. 01305 266926 / dorchesterarts.org.uk.

## GRIMETHORPE COLLIERY BAND

27 October

Lighthouse, Kingland Road, POOLE, BH5 1UG. 7.30pm. lighthouse.co.uk.

## HAZEL O'CONNOR

28 October

The Brewhouse Theatre, Coal Orchard, TAUNTON, TA1 1JL. 7.30pm. £21. 01823 283244 / thebrewhouse.net.

## RAMBERT 2

30 and 31 October

Lighthouse, Kingland Road, POOLE, BH5 1UG. 7.45pm. lighthouse.co.uk.

"The brand new Rambert 2 attacks works from some of the world's most thrilling choreographers."

## 'SLEEPYHEAD'

30 October - 3 November

Bristol Old Vic, King Street, BRISTOL, BS1 4ED. £6. bristololdvic.org.uk.

## 'GIANTS OF SCIENCE'

30 October - 3 November

Bristol Old Vic, King Street, BRISTOL, BS1 4ED. £15 / £13. bristololdvic.org.uk.

## 'SALAD DAYS'

30 October - 3 November

Northcott Theatre, Stocker Road, EXETER, EX4 4QB. 7.30pm (Wednesday and Saturday matinee 2.30pm). £31.50 / £22. 01392 726363. See 22 - 27 October.

## 'ABIGAIL'S PARTY'

30 October - 17 November

Salisbury Playhouse, Malthouse Lane, SALISBURY, SP2 7RA. 7.30pm (Thursday and Saturday matinee 2.15pm). £27 / £13. 01722 320333.

## BOURNEMOUTH SYMPHONY CHORUS: 'THE POWER OF LIFE'

31 October

Lighthouse, Kingland Road, POOLE, BH5 1UG. 7.30pm. lighthouse.co.uk.

## 'NOT: LADY CHATTERLEY'S LOVER'

31 October

Dorchester Arts, The Corn Exchange, High East Street, DORCHESTER, DT1 1HF. 7.30pm. £13 / £11. 01305 266926. "Surreal humour mixes with steamy costume drama in this laughter-filled parody of the DH Lawrence novel."

4 COLOURS  
to make a  
THOUSAND  
SHADES

#COLOURINGYOURFUTURE

**S&G**  
STEPHENS & GEORGE  
PRINT  GROUP

WWW.STEPHENSANDGEORGE.CO.UK

01685 388888 | SALES@STEPHENSANDGEORGE.CO.UK

GOAT MILL ROAD | DOWLAIS | MERTHYR TYDFIL | CF48 3TD

 FOLLOW US ON TWITTER @SandGPrintGroup



# CLASSIFIEDS

## OPPORTUNITIES

● Call out for South West makers. Thelma Hulbert Gallery (THG) is seeking makers who produce high quality, contemporary work, either one-offs or small scale production, to show in their annual Christmas selling exhibition of contemporary craft and design. Professional and amateur South West makers are now invited to submit their work for Present Makers 2018 (10 November - 22 December 2018). A leading event in the South West crafts calendar, Present Makers 2018 celebrates the talent of contemporary crafts people and designer-makers, who make the South West such a vibrant place to live. The exhibition showcases work in a diverse range of materials including but not limited to: glass, metal, wood, paper, textiles, prints, ceramics, furniture and jewellery. Over 1,500 visitors attend the annual selling exhibition in search of unique hand-made and locally-designed gifts and to support local makers and independent businesses from the South West. The deadline for applications is Tuesday 18 September 2018. See [thelmahulbert.com](http://thelmahulbert.com) for more details.

● Are you a maker or artist looking for a new workshop space in a creative and supportive environment? Walford Mill Crafts on the edge of Wimborne is an established craft centre with a shop, gallery and a number of on-site makers, some of whom are just starting their practice. Work is now underway to turn the first floor of the historic mill building into studio space for yet more creatives. If you are interested in finding out more, contact Anne Hitchcock or Carol-Anne Savage on 01202 841400 or email [info@walfordmillcrafts.co.uk](mailto:info@walfordmillcrafts.co.uk).

● One Craft Gallery is a successful co-operative in Shepton Mallet. We are looking for new members to join our friendly team. Look at our website [www.onecraftgallery.co.uk](http://www.onecraftgallery.co.uk) or pop in and see us. We would love to hear from you! Please apply to Kerrie McNeil: 01749 343777 / [mcneil.kkas@blueyonder.co.uk](mailto:mcneil.kkas@blueyonder.co.uk).

● Contemporary music writers wanted for Evolver magazine. Please email examples of your writing to: [simon@evolver.org.uk](mailto:simon@evolver.org.uk)

## WORKSHOPS AND COURSES

● Bridport's experimental theatre The Lyric is hosting various theatre, clown and writing masterclasses this autumn led by professionals. Details: [www.the-lyric.com](http://www.the-lyric.com).

● Art Mentoring with Nick Andrew in Cartshed Studio at Bull Mill Arts. Develop your individual approach to making art in a purpose built and fully equipped painting studio in the creative ambience of Bull Mill and surrounded by stunning riverside, woodland and meadow landscapes. 10am - 4.30pm, the same day each week for 6 weeks. Starting 10 Sept 2018. Fee £288. Nick Andrew is a full time professional painter and has over 30 years art teaching and mentoring experience. More information, fees and booking: [nickandrew.co.uk/art-mentoring](http://nickandrew.co.uk/art-mentoring). Tel: 07730 400784. Bull Mill Arts, Crockerton, Warminster, BA12 8AY.

● Watercolour, acrylic and mixed media workshops in popular TV artist Marilyn Allis studio near Bere Regis. See [www.marilynallis.com](http://www.marilynallis.com) for more information or to book.

● Textile Art and Embroidery Tuition with Jenni Cadman. I offer tuition in Free-Machine Embroidery to all abilities from complete beginners to the more advanced. So whether you have no experience in the technique or would like to refresh and extend your existing skills I can help. Good guidance and advice with projects, finding new directions, portfolio assessments and lots of inspiration given on a one-to-one basis. Please visit my new website for further details: [www.jennicadman.co.uk](http://www.jennicadman.co.uk)

● Printmaking For Beginners. 6 week courses and weekend workshops available. Learn basic printmaking techniques including linocut, collagraph and drypoint etching, in a relaxed, friendly setting, Christchurch, Dorset. For more information visit [www.artofstartingout.co.uk](http://www.artofstartingout.co.uk) or call 07969 436921.

● Flux'n'Flame Jewellery School: Now one of the largest independent jewellery schools in the UK offering an ever expanding range of traditional jewellery making courses from 1 day tasters, weekend courses and weekly classes to a 6 day Summer School and specialist masterclasses. Taught by professional jewellery designers and set in a beautiful purpose built workshop in the heart of the Dorset countryside near Milton Abbas. [www.fluxnflame.co.uk](http://www.fluxnflame.co.uk). For more info please call Jesa on 01258 881690 / 07785 550771.

● Life Drawing, Exeter. Untutored sessions, Sundays 10am - 12.30pm. £8. 01392 273744 / [adrian@afgwyt.plus.com](mailto:adrian@afgwyt.plus.com).

## MISCELLANEOUS

● Sshh - We're Drawing! Creative Retreats for Artists. Location: Aude, Pyrenees. Dates: April, May, June, September, 2019. Duration: 7 nights. Min 5, max 7 / 8 participants. Retreats aren't courses. I offer a structure prioritising 'quiet', self-directed time using the studio workshop and other spaces for reading, writing, thinking. Optional 1:1 tutorials / mentoring / practical support. A group-agreed schedule for discussion is encouraged. We take shared meals. Abundant nature and good walking on the doorstep. Opportunities for off-site working and visits. To express interest and request details, email: [jem.5@icloud.com](mailto:jem.5@icloud.com). Other opportunities: Tutors / groups / holidays, see [www.creative-helix.com](http://www.creative-helix.com).

● To achieve the best price for your work you need the highest quality prints. As an award-winning fine art printer we can help you achieve that goal. All prints come with a Certificate of Authenticity and we are the only ArtSure accredited printer in the region. Call John Roland on 01747 852221. [www.salt-of-the-earth.biz](http://www.salt-of-the-earth.biz).

● 1970s wooden drawing / drafting board on metal stand. Board 32" x 42", angle adjustable. Stores folded flat. £48. T: 01935 862731.

● Wanted: Classical and Jazz LP records. Tel: 01458 834102 / 07704 229979 / email: [tonyartony@aol.com](mailto:tonyartony@aol.com).

● Posture with Attitude, Sophie Larter, Life Model. Experienced and professional. Based in Somerset, own transport, will travel, Devon / Dorset and beyond. Contact: 07531 703168 or [sophie.ann.larter@gmail.com](mailto:sophie.ann.larter@gmail.com).

● Studio space needed in Weymouth / Portland. Contact Frances: 07946 903930.

● Unique property for sale: Magical, secluded countryside property in East Clare (West of Ireland) perfect for artist / craftsman. Main 3 bed / 2 bathroom house with woodburning stoves, central heating and solar hot water. Attached self-contained barn conversion with proven Airbnb income (sleeps up to 4). Large insulated studio space with velux windows and large doors and separate large unconverted stone barn perfect for storage or sculpture. Truly idyllic 1 1/4 acres of land with stream running through it. 10 minutes walk to river with 7 secret waterfalls. Nearby woodland walks, lakes, Steiner School, Irish Seedsavers, Feakle Trad music festival and longstanding international community. Just 40 minutes from Shannon airport. 375,000 euros. [www.stillflowretreat.com](http://www.stillflowretreat.com). Email: [freyalawton2012@gmail.com](mailto:freyalawton2012@gmail.com).

● Putting on a variety show or other entertainment? I am offering tried-and-tested comedy material - sketches, monologues, mini-dramas, mini-operas, mini-pantos and comic song lyrics. All free, no postage as I'll email your requests to you. To see the list of items, please visit the 'free comedy material' page at [www.johnbarclayink.com](http://www.johnbarclayink.com).

● Experienced professional female model. Available in Poole and Bournemouth Area. Contact Lilly: 0780 4020 735.

● Experienced Life Model, own transport, 20 mile radius from Glastonbury, £15/hour. Jo Waterworth 01458 834405 or [jowaterworth23@hotmail.co.uk](mailto:jowaterworth23@hotmail.co.uk).

## FREE EVOLVER LISTINGS

Exhibition and performance listings should be emailed to: [listings@evolver.org.uk](mailto:listings@evolver.org.uk)

Please supply information (in upper and lower case) in the following order: Event. Date(s). Venue, address (including postcode). Times. Admission fee (if any). Contact number / website. Up to 30 words about the event.

## EVOLVER CLASSIFIEDS

20p per word • Add £5 for BOX • Add £10 for RED BOX

1) Email to [classifieds@evolver.org.uk](mailto:classifieds@evolver.org.uk)

2) Send cheque (payable to 'Evolver Media') to: EVOLVER CLASSIFIEDS, EVOLVER MEDIA, 8 BUCKLAND ROAD, PEN MILL TRADING ESTATE, YEOVIL, SOMERSET BA21 5EA



**Foundation Degree  
Contemporary  
Fine Art Practice**

CREATIVE & VISUAL ARTS  
[www.weymouth.ac.uk](http://www.weymouth.ac.uk)

**WEYMOUTH  
COLLEGE**

IN PARTNERSHIP WITH



**UNIVERSITY OF  
PLYMOUTH**



**Foundation Degree  
Contemporary  
Photography Practice**

**APPLY  
NOW  
TO  
STUDY**



**picture framing  
fine art printing  
exhibition services**

[www.mount-art.co.uk](http://www.mount-art.co.uk) | [info@mount-art.co.uk](mailto:info@mount-art.co.uk) | 01373 473894



**ART CLASS**  
**AUTUMN 2018 COURSE**  
**The Seasons Art Class**

Absolute Beginners to Improvers  
14 week course  
Three hours, once a week, mornings or afternoons  
Step-by-step guidance  
Meet new friends - Learn new skills

**Weymouth Avenue Pavilion, Dorchester**  
**01747 828296**  
**[www.theseasonsartclass.com](http://www.theseasonsartclass.com)**  
**STARTS SOON – LIMITED SPACES – CALL NOW FOR DETAILS**



**SOUND CHECK**

**Love watching LIVE bands for FREE?**  
Bands play LIVE in our studio and we VIDEOSTREAM to [Facebook.com/visualradioarts](https://www.facebook.com/visualradioarts) and [visualradioarts.co.uk](http://visualradioarts.co.uk)

**VISUAL RADIO ARTS**




**Culture+**  
Business · Tourism · Social Impact

**Culture+** is a free programme of activities to support artists, arts organisations and SME tourism businesses to thrive in Dorset, Bournemouth and Poole.

- ◆ Sign up to our free workshops and courses to help your creative career thrive
- ◆ Build your network at our inspiring events across the county
- ◆ Join the discussion at our **Culture<sup>3</sup>** events – Culture Creative Conversations with a panel of industry experts on a variety of themes
- ◆ Access a range of free toolkits and resources online

See more **Culture+** at:  
[www.theartsdevelopmentcompany.org.uk](http://www.theartsdevelopmentcompany.org.uk)  
or call any of the Culture+ team on:  
**01305 225524**

Funded by:





A partner in:





## EVOLVER SPONSORS AND OUTLETS



**EVOLVER IS AVAILABLE FREE AT THE FOLLOWING WESSEX OUTLETS:**

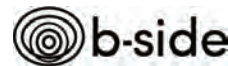
**ABBOTSBURY:** Dansel Gallery. **AXMINSTER:** Axminster Arts Café, Sublyme Café. **BATH:** Action for Hearing Loss, Art Salon, Bath Artists' Studios, Beaux Arts, David Simon Gallery, Edgar Modern Gallery, Fringe Arts, Holburne Museum of Art, Michael Tippett Centre, Rostra Gallery, University of Bath, Victoria Art Gallery. **BERE REGIS:** Cyril Wood Court. **BLANDFORD:** Bryanston Arts Centre, Forum Café, Forum Framers. **BOURNEMOUTH:** All Fired Up, Artcetera, Flux Art Supplies, Miramar Hotel, Pavilion Dance, Royal Bath Hotel, Russell-Cotes Museum & Art Gallery. **BOWER HINTON:** The Hollies Hotel. **BRADFORD ON AVON:** Wiltshire Music Centre. **BRIDGWATER:** Bridgwater Arts Centre, Clayhill Arts, Engine Room. **BRIDPORT:** Beach & Barnicott, Bridport Arts Centre, Bridport Old Books, Bridport Music, The Bull Hotel, Clocktower Music, Lyric Theatre, St Michael's Studios. **BRISTOL:** Bocabar, Bristol Fine Art, Centrespace, Colston Hall, Create Centre, Folk House, Jamaica Street Artists, Lime Tree Gallery, Bristol Old Vic, PRSC Gallery, RWA, Spike Island, St George's, Tobacco Factory, Trinity Centre, UWE, Watershed. **BROADWINDSOR:** Craft & Design Centre. **BRUTON:** Bruton Art Factory, Bruton Castle, At The Chapel, Hauser and Wirth. **BUDLEIGH SALTERN:** Brook Gallery. **BURNHAM ON SEA:** Princess Theatre & Arts Centre, Seabreeze Gallery. **BURROWBRIDGE:** Somerset Levels Baskets. **CASTLE CARY:** Bailey Hill Bookshop, Clerkenwell Fine Art, Trowbridge Gallery. **CHARD:** Art Café, Braylismow's, Hornsbury Mill Hotel. **CHEDDAR:** Sketch Cafe. **CHEDDON FITZPAINE:** Hestercombe Gallery. **CHRISTCHURCH:** Hatch Gallery, Hayloft Gallery, Red House Museum, Regent Centre. **CLEDON:** Fizz Gallery. **CONGRESBURY:** Church House Designs. **CORFE CASTLE:** Boilerhouse Gallery, Gallery 41, Morton House Hotel. **CORSHAM:** Pound Arts. **CREWKERNE:** Phoenix Books. **CROCKERTON:** Bull Mill Arts. **CROWCOMBE:** Halsway Manor. **CULLOMPTON:** Cullompton Community College. **CULMSTOCK:** The Strand Stores. **DEVIZES:** Bluestone Gallery, St John's Art & Deco, Wiltshire Museum, Wine Street Gallery. **DORCHESTER:** Artsreach, Dorchester Arts, Duke's, Dorset County Museum, Frank Herring & Sons, Gallery on

The Square, The Little Keep. EAST LAMBROOK: East Lambrook Manor Gardens. EXETER: Academy of Music, Boston Tea Party, The Cavern, Corn Exchange, Exeter School of Art, Phoenix Arts Centre, Royal Albert Memorial Museum, Southgate Gallery, Uneath. FROME: Black Swan Arts, Cheese and Grain, Fiat Lux, Hubnub Centre, Merlin Theatre, Mount, Rook Lane Arts. GILLINGHAM: Bowridge Gallery, The Idea Works, Slade Centre. GLASTONBURY: Abbey Muse Gallery, Bocabar, Glastonbury Galleries, Red Brick Building, Rural Life Museum. HEMYOCK: Healthy Living Centre. HOLLYCLIFFE: In The Frame. HOLTON HEATH: Holton Lee. HONITON: The Beehive, Boston Tea Party, Hybrid Gallery, Strummer Pink, Thelma Hulbert Gallery. ILMINSTER: Dillington House, Ilmminster Arts Centre, Millhouse. LANGPORT: 4 Every Cloud, Art Tea Zen, Shakspeare Glass, Somerset Art Works. LANGTON MATRAVERS: Burgate Stone Carving Centre. LYME REGIS: Blue Lias, Coombe Street Gallery, Fine Art Framing, Marine Theatre, Studio 19, Town Mill. MARLBOROUGH: Framemakers. MARTOCK: 303 Gallery, Martock Gallery. MERE: Beaumont Gallery. MILDENHALL: Rabley Contemporary Drawing Centre. MILTON ABBAS: Dorset Crafty Barn, Flux'n'Flame. MINEHEAD: Courtyard Framing, Lee Davey Gallery, Regal Theatre. MORCOMBELAKE: Artwave West. MUCHELNEY: John Leach Gallery. NEW MILTON: Forest Arts. NORTH CURRY: Community Café. OTTERTON: Otterton Mill. POOLE: Arts University Bournemouth, Bournemouth University Atrium Gallery, Guildhall Gallery, Josephine Wall Gallery, Lighthouse, The Gallery Upstairs, Poole Museum. PORLOCK: Churchgate Gallery, Melody Art. PORTLAND: B-Side Outpost, White Stones. SALISBURY: City Hall, Fisherton Mill, Framemakers, Noble Art Supplies, Salisbury Arts Centre, Salisbury Museum, Salisbury Playhouse, Studio 53, Wiltshire Gallery, Young Gallery. SEATON: Arts Café. SEAVINGTON: Village Shop. SHAFTESBURY: The Cygnet, Grosvenor Hotel, Salt of the Earth, Shaftesbury Arts Centre. SHEPTON MALLET: One Craft Gallery. SHERBORNE: Arstlink, Jerram Gallery, New Digby Hall, Old Barn Framing Gallery, Winstone's. SIDMOUTH: East Devon Art Academy, Flo and Us, Kennaway House, Winstone's. SOMERTON: ACE Arts, Gifted Company & Gallery Coffee Shop. SOUTH

CADBURY: Chapel Cross Tea Rooms. SOUTH  
PETHERTON: David Hall. STALBRIDGE: Dike  
& Sons. STOKES: ST GREGORY: Willows &  
Wetlands Centre. STOURHEAD: First View  
Gallery. STREET: Millfield School Atkinson  
Gallery, Strode Theatre. STURMINSTER  
NEWTON: The Exchange, Poet's Corner,  
Wessex Photographic. SWANAGE: Durlston  
Castle, L'Artishe Gallery, Little Green Gallery,  
Mowlem Theatre, Mulberry Bush Gallery,  
Purbeck New Wave Gallery, Quarr Gallery,  
Sansom Gallery. TAUNTON: Brehwose  
Theatre, CIC CIC, Framers, Ginger Fig, Jane  
Amour, Mount Somerset Hotel, Queen's  
College, Shakspeare Glass, Tacchi-Morris Arts  
Centre, University Centre Somerset.  
TINCLETON: Tincton Gallery. TISBURY:  
Messums Wiltshire. TIVERTON: Lantic Gallery.  
TROWBRIDGE: Arc Theatre, The Lamb,  
Trowbridge Arts. VERWOOD: The Hub.  
WAREHAM: Creative Gallery, Furzebrook  
Studios, Priory Hotel, Rex Cinema. WATCHET:  
Contains Art. WELLINGTON: Old Brick  
Workshop. WELLS: A2 Gallery, Andelli Art,  
Good Earth, Heritage Courtyard Studios,  
Somerset Guild of Craftsmen Gallery and  
Shop. WEST BAY: Sladers Yard. WEST  
COKER: Lanes, Old School Room. WESTHAY:  
Somerset Crafts. WESTON-SUPER-MARE:  
Frame Station, LT Gallery, Playhouse, Weston  
College. WEYMOUTH: Cackleberry Frames,  
Gallery on The Wey, Leighton Gallery,  
Weymouth Gallery. WILLITON: Breeze Art  
Gallery. WIMBORNE: Allendale House, Square  
Records, Walford Mill Craft Centre.  
WOODBURY: Woodbury Studio Gallery.  
WORTON: Old Mill Gallery. WRINGTON:  
Barleywood Studios. YEVOIL: Octagon  
Theatre. YETMINSTER: Old School Gallery.

Plus selected TOURIST INFORMATION  
CENTRES and LIBRARIES throughout Wessex.

**EVOLVER IS SPONSORED BY:**  
ACE Arts • Acoustic Distribution • Activate  
The Arts Development Company  
Atkinson Gallery • Aztec Media • B-Side  
Black Swan Arts • Boilerhouse Gallery  
Bridport Arts Centre • Caldecourt Productions  
The Creative Gallery • Dorchester Arts  
Dorset Visual Arts • Exeter School of Art  
Lighthouse • Mount • Octagon Theatre  
Sladers Yard • Somerset Art Works  
Stephens & George • St Michael's Studios  
Thelma Hulbert Gallery • Tincleton Gallery  
Walford Mill Crafts • Weymouth College





**BATH  
SCHOOL  
OF ART  
& DESIGN**



**MASTERS  
DEGREE**

**+  
INTERIM  
SHOWS  
2018**

21 — 26 September  
[www.bathspa.ac.uk/MA2018](http://www.bathspa.ac.uk/MA2018)

**BATH  
SPA  
UNIVERSITY**

**OTHER  
SIDE**

**BFI  
Film  
Forever**

**ARCADIA**

**ARCADIA** + Q&A WITH ADRIAN COOPER  
OF COMMON GROUND  
**SATURDAY 29TH SEPTEMBER**  
Doors 7pm Start 8pm

UK 2017 | Dir Paul Wright | Music by Adrian Utley, Will Gregory | 78 mins | Cert 12A  
*Arcadia is a provocative and poetic new film about our contradictory  
relationship with the land, crafted from archive footage.*  
*'Absorbing...Fascinating...Seductive'*  
*Peter Bradshaw, The Guardian (Film of the week)*  
Tickets £10 in advance from [www.other-side.eventbrite.co.uk](http://www.other-side.eventbrite.co.uk)

**CHURCH STUDIO HAYDON DORSET DT9 5JB**  
*A series of talks, live performances and screenings  
+ food and drink of an interesting ilk*

In association with  
**EVOLVER** **DENMAN** **SHERBORNE**  
THE WIMBORNE ARTS CENTRE + GOULD TIMES

 **b-side**

**FESTIVAL 2018**

08-16 SEPTEMBER  
PORTLAND, DORSET  
[B-SIDE.ORG.UK](http://B-SIDE.ORG.UK)

 supported using public funding by  
**ARTS COUNCIL  
ENGLAND**

**EVOLVER 108**  
November and December 2018



Jazmin Velasco





insideoutdorset



@InsideOutDorset



#IOD2018



**extraordinary events  
in extraordinary places**  
**14 — 22 september 2018**

**insideoutdorset.co.uk**



Supported using public funding by  
**ARTS COUNCIL  
ENGLAND**

