

THE **FREE** WESSEX ARTS AND CULTURE GUIDE

# EVOLVER

January and February 2020







framing, printing,  
installation

www.mount-art.co.uk | 01373 473894  
Silk Mill, Frome



WHO REALLY IS THE LOVE OF YOUR LIFE?



6 - 22 FEBRUARY

01722 320 333  
wiltshirecreative.co.uk

**SALISBURY  
PLAYHOUSE**  
PART OF WILTSHIRE CREATIVE

A Wiltshire Creative and Up in Arms Production  
Up in Arms kindly supported by Frank and Elizabeth Brenan  
Generously supported by Wiltshire Creative's Commissioning Circle



## SUBLIME SYMMETRY

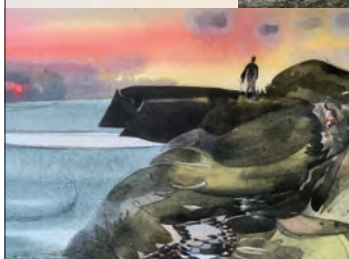
*The Mathematics behind De Morgan's Ceramic Designs*



14 June 2019 - 2 February 2020

East Cliff, Bournemouth BH1 3AA  
www.russellcotes.com  
Image © De Morgan Foundation

**RUSSELL-COTES**  
HOUSE • GALLERY • GARDEN

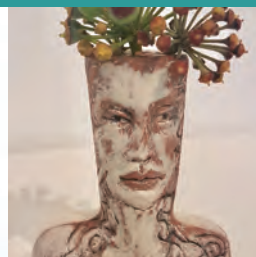


## Boilerhouse Gallery

CONTEMPORARY ART AND CRAFT

Open Saturdays 11-4 in January and  
February and throughout Half Term  
17 - 21 February or by appointment:  
01929 481073

Sandy Hill Lane, Corfe Castle,  
Dorset BH20 5JF  
www.boilerhousegallery.co.uk





# EVOLVER 115

## EXHIBIT A



### MICHAEL GILL: 'MEDINA'

Lithograph (40 x 30 cm, 2019)

ARTIST'S STATEMENT: "So when I'm working I want to get to the level of heightened experience, that feeling when you're in church and there's a tangible sense of otherness. You're in the drama of the moment. Or your back in 1984 at a concert somewhere in Liverpool and the excitement as Gregorian chants break out just before Echo & the Bunnymen appear through the dry ice. Bacon said something about wanting his art to be a total attack on the nervous system. I guess I want my images to have all of the above impact and yet be something words can't describe. So the images I make could be mythical icons, false gods, magical beings or enigmatic seals or devices. Thing is no one knows what they're saying. They're like speaking in tongues, in gobbledy gook. Whatever the language, its indecipherable but familiar. Knowing and forgetting. Chant."

[merchantsartspace.com](http://merchantsartspace.com)

#### EVOLVER

THE WESSEX ARTS AND CULTURE GUIDE

Editor SIMON BARBER

Assisted by SUZY RUSHBROOK

Evolver Writer

FIONA ROBINSON [www.fionarobinson.com](http://www.fionarobinson.com)

Graphic Design SIMON BARBER

Website OLIVER CONINGHAM at AZTEC MEDIA

Front Cover

SANDI TOKSVIG

17 January: Lighthouse, Poole  
[lighthousepoole.co.uk](http://lighthousepoole.co.uk)

**EVOLVER MEDIA**

8 BUCKLAND ROAD, PEN MILL TRADING ESTATE,  
YEovil, SOMERSET BA21 5EA



Email [simon@evolver.org.uk](mailto:simon@evolver.org.uk)

Telephone 01935 808441

Website [evolver.org.uk](http://evolver.org.uk)

Instagram [evolvermagazine](https://www.instagram.com/evolvermagazine)

Twitter @SimonEvolver

Facebook [facebook.com/EvolverMagazine](https://www.facebook.com/EvolverMagazine)

Published by EVOLVER MEDIA LIMITED

Pre-Press by FLAYDEMOUSE

01935 479453 / [flaydemouse.com](mailto:flaydemouse.com)

Printed by STEPHENS & GEORGE

Distributed by ACOUSTIC

07456 009377 / [everett190@btinternet.com](mailto:everett190@btinternet.com)

**DEADLINE FOR EVOLVER 116**

March and April 2020

FRIDAY 7 FEBRUARY

# VISUAL ARTS

January and February 2020



'LEONARDO'



'THE GROOM'

## NICOLA BEALING: THREE ACTS AND SEVEN SCENES

*Three Acts and Seven Scenes* is a solo exhibition resulting from Wiltshire Creative commissioning painter and printmaker Nicola Bealing to respond to the original play *Blood Wedding* by Federico Garcia Lorca.

Nicola Bealing is a Cornwall-based artist. She is a serious voice in contemporary British art, a visual storyteller whose fascinating pictorial analysis brings unusual insight into the play.

Nicola is an artist with exceptional skill and talent whose work was acquired by the British Museum last summer. Her work leans towards the narrative and visually communicates modern-day fables by exploring the absurdity of human behavioural patterns.

Themes of dark and light, blood and contortion, wind, sky and water, eyes and teeth, long roads, high mountains, birds in forests together with powerful representations of flora recur in her work. For this reason, she was approached to

create a new body of work for a solo exhibition at Salisbury Arts Centre to coincide with the retelling of *Blood Wedding* at Salisbury Playhouse.

From early discussions with the artist it was clear the exhibition would do more than simply illustrate the text. Nicola usually works from her own imagination. Working with the text of the play was a new experience for her. For weeks Nicola immersed herself in Lorca's work and life in order to conjure his cultural influences and get to grips with his motifs and choices. All of this research renders into her paintings, resulting in an unfiltered, direct response to the play.

"I was fascinated by the Bride's rejection of her passive role. She gambles and loses everything, but gains power through the desperation of her attempt," said Nicola.

Nicola was struck by the way in which Lorca presents the characters in *Blood Wedding* as archetypes: *The Mother, The Groom, The Bride* etc. She says the cast

list at the beginning of the play reads a little like a list of figures depicted on tarot cards. *The Moon* appears in this body of work in several depictions. The unsettling and malevolent character *The Moon* drives the tragedy, eager for blood. By shedding light, he brings death - very different from more familiar characterisations of the moon as a friendly, benign presence smiling down on us.

This exhibition highlights the interdisciplinary ambitions of Wiltshire Creative's programming by bringing masterful execution of drama across many canvases to Salisbury Arts Centre. The 1930s Spanish tragedy is presented here through the work of a contemporary visual artist.

Mirka Golden-Hann

**27 January - 28 March:** Salisbury Arts Centre, Bedwin Street, SALISBURY, SP1 3UT. Monday - Saturday 10am - 3pm. 01722 320333 / wiltshirecreative.co.uk.



# VISUAL ARTS

## SALISBURY GROUP OF ARTISTS

### WINTER EXHIBITION

Until 2 January

Salisbury District Hospital, Odstock Road, SALISBURY, SP2 8BJ. 8am - 7pm. 01722 326280. "Original and affordable local landscapes and other original works on display throughout the corridors at this popular annual event."

### 'POP UP VINTAGE'

Until 2 January

Courtyard Gallery, Town Mill, Mill Lane, LYME REGIS, DT7 3PU. 10.30am - 4.30pm (Closed 25 and 26 December). 01297 444042 / townmill.org.uk. "Toys, books, clothes, needlecraft, accessories and homeware."



## WINTER ART FAIR

Until 4 January

The Gallery, Symondsbury Estate, SYMONDSBURY, Bridport, DT6 6HG. 10.30am - 4.30pm. lymebayarts.co.uk.

"This festive exhibition joins the Symondsbury Estate's Christmas Market on 1 December and will include something for everyone: from sculpture and textiles to paintings and photography, jewellery and ceramics."

Above: Hilary Buckley 'Festive Fatsia'

## THE EELES FAMILY

Until 4 January

Shaftesbury Art Centre, 13 Bell Street, SHAFTESBURY, DT7 8AR. Monday - Saturday 10am - 5pm, Sunday 11am - 4pm. 01747 854321. "The Eeles Family Potters produce beautiful stoneware, marbled porcelain and intensely colourful rainbow raku, for which they are internationally known."

### 'SALON D'ACCEPTANCE'

Until 8 January

Lighthouse, 21 Kingland Road, POOLE, BH15 1UG. 01202 280000 / lighthousepoole.co.uk. "The Salon is a grouping of 15 to 20 DVA (Dorset Visual Arts) artists who meet to share ideas and subject their work to critical, peer review. This diverse exhibition focuses on work that has benefitted from this process."



ALFRED STOCKHAM 'MOONLIT GARDEN' (16 x 20 inches)

## RADIANCE

"When the nights are at their longest, paintings of light shine especially brightly. *Radiance* brings together six artists who recreate light in their work. Two, Fred Cuming and Michael Fairclough, paint extraordinarily brilliant skies and water. Two, Jeremy Gardiner and Rachel Fenner, concertina time by painting light effects on coastal geology. And two are very old friends: David Inshaw, whose sunsets, bonfires, slanting light and lightning electrify his pictures, and Alfred Stockham, whose paintings both abstract and more figurative glow with glorious colour. We introduce two new makers to Sladers Yard, ceramicist Franny Owen and jeweller Lynne Strover, both of whom have come late to their craft with clear ideas of what they want to achieve and exceptional ability to make beautiful things. Petter Southall shows new large scale steam-bent garden rooms in similar curves to his sculptural Wave, alongside his exquisite furniture."

**Until 12 January:** Sladers Yard, West Bay Road, WEST BAY, Bridport, DT6 4EL. Monday - Saturday 10am - 4.30pm, Sunday 10am - 3pm. 01308 459511 / sladersyard.co.uk.

## TRINITY BUOY WHARF DRAWING PRIZE 2019

Until 11 January


The Salisbury Museum, The Kings House, 65 The Close, SALISBURY, SP1 2EN. Monday - Saturday 10am - 5pm. £8 / £4. salisburymuseum.org.uk. "The Trinity Buoy Wharf Drawing Prize,

formerly the Jerwood Drawing Prize, is the largest and longest-running annual open exhibition for drawing in the UK. Selected from original drawings, the exhibition has established a reputation for its commitment to championing excellence and promoting, celebrating and challenging contemporary drawing

practice. This open exhibition is a platform for drawing practitioners to showcase their work alongside other leading contemporary artists in the field. The 2019 exhibition is made up of a diverse selection of work which explores the nature, role and value of drawing in creative practice today."

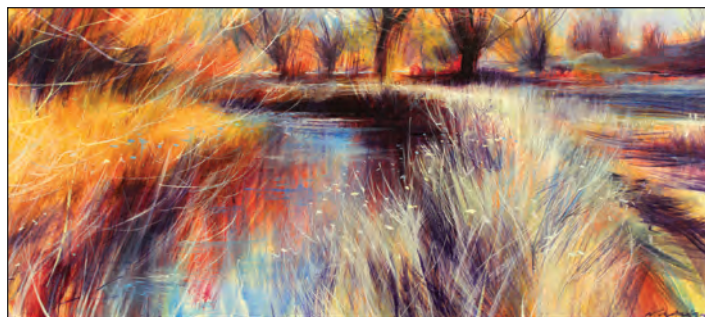


**galleries | studios | shop | cafe**  
2 Bridge Street, Frome BA11 1BB  
01373 473980 | www.blackswanarts.org.uk

 **BLACKSWANARTS**

**OPEN: Mon - Sat 10am-4pm**  
and Independent Market Sundays  
Registered Charity No. 292463



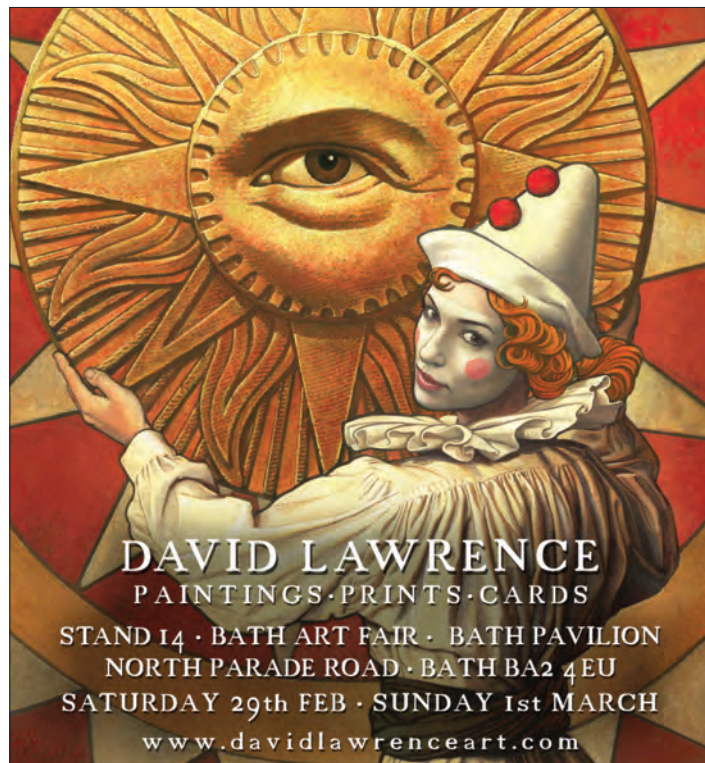


## The Winter Visitor

Drawings / Paintings by Nick Andrew and Tanya Hinton



Shaftesbury Arts Centre, Bell Street, Shaftesbury  
26 February - 10 March. 10am - 4pm daily  
[www.nickandrew.co.uk](http://www.nickandrew.co.uk) [www.tanyahinton.jimdo.com](http://www.tanyahinton.jimdo.com)  
07730 400784 / 07713 277083



## DAVID LAWRENCE

PAINTINGS · PRINTS · CARDS

STAND 14 · BATH ART FAIR · BATH PAVILION  
NORTH PARADE ROAD · BATH BA2 4EU  
SATURDAY 29th FEB · SUNDAY 1st MARCH  
[www.davidlawrenceart.com](http://www.davidlawrenceart.com)



**hiraeth**  
STUDIO POTTERY  
Designed and made in Frome  
Commissions welcome

[liz@hiraethstudiopottery.com](mailto:liz@hiraethstudiopottery.com) | [hiraethstudiopottery.etsy.com](http://hiraethstudiopottery.etsy.com) | [instagram.com/hiraethstudiopottery](https://www.instagram.com/hiraethstudiopottery)

ILMINSTER  
**arts centre**  
AT THE MEETING HOUSE

★ ART ★ MUSIC ★  
CRAFTS ★ CAFE  
[themeetinghouse.org.uk](http://themeetinghouse.org.uk)

ILMINSTER  
25  
YEARS  
CENTRE

**OPEN PRIZEWINNERS EXHIBITION 2 - 25 JANUARY**  
Paintings, drawings, sculpture from the 2019 Ilminster Open winners  
**A GLORIOUS GALLIMAUFRY 27 JANUARY - 15 FEBRUARY**  
Eclectic art from West Country artists

**EXHIBIT A**  
Artists and photographers are invited to submit work for consideration as our next issue's page 3 **EXHIBIT A** by emailing images to: [simon@evolver.org.uk](mailto:simon@evolver.org.uk)

**Contemporary Interiors in Wood**  
5 rooms full of unique wood work from over 200 craftsmen working in the UK  
Ranging from kitchenware to one-off jewellery boxes and furniture  
Coffee shop and small children's play area  
**Celebrating 40 years of promoting British woodwork in Abbotsbury 1979 - 2019**  
Rodden Row, Abbotsbury, DT3 4JL  
[www.danselgallery.co.uk](http://www.danselgallery.co.uk)  
01305 871515  
Open 10am - 5pm every day

GUGGLETON FARM ARTS PRESENTS:

**Drawing you in**  
AN INTERACTIVE GALLERY EXPERIENCE.  
COME ALONG AND MAKE YOUR MARK.  
Drawing sessions from 11-3, 13-24 JAN,  
THE GUGG, Station Road,  
Stalbridge, DT10 2RQ  
[www.guggletonfarmarts.com](http://www.guggletonfarmarts.com)

**THE CREATIVE GALLERY**  
Showcasing ceramics, paintings, photography, jewellery and glass by local artists

**"Wareham Blues"**  
3rd-31st January  
Resident Artists/Makers

**"Wicked Weavers"**  
1st-29th February  
Bridget Eastman & Christine Gregory

St John's Hill, Wareham, Dorset BH20 4NB t 01929 551700 e [fiona@creativegallerywareham.co.uk](mailto:fiona@creativegallerywareham.co.uk)  
**Open Monday-Saturday 10am-5pm**



# VISUAL ARTS

## 'LIGHT'

**Until 11 January**

Claremont Community Centre,  
Eastbourne Avenue, BATH, BA1 6EN  
Wednesday 1 - 5pm, Thursday 10am -  
1pm. 01225 315705. "At the heart of  
visual art practice, and a key cultural  
and religious metaphor, light continues  
to inspire."

## 'THE LOST WORDS'

**Until 12 January**

The Royal Albert Memorial Museum &  
Art Gallery, Queen Street, EXETER, EX4  
3RX. Tuesday - Sunday 10am - 5pm.  
01392 265858 / exeter.gov.uk/RAMM.  
"Exhibition celebrating the relationship  
between language and the living world,  
and of nature's power to spark the  
imagination."

## STEVE CLARKSON

**Until 12 January**

Brook Gallery, Fore Street, BUDLEIGH  
SALTERTON, EX9 6NH. Tuesday,  
Wednesday and Thursday 1 - 4.30pm,  
Friday and Saturday 11am - 4.30pm,  
Sunday 2 - 4.30pm. 01395 443003 /  
brookgallery.co.uk. "An exhibition of  
experimental printmaking works by  
Steve Clarkson, including gum  
bichromate, digital prints and  
sculptures. Chiaroscuro, Vanitas and  
Caravaggio inspired imagery."

## ANN GOLDSMITH: 'FRAGILE BLUE'

**Until 14 January**

Trowbridge Town Hall, Market Street,  
TROWBRIDGE, BA14 8EQ. Monday -  
Saturday 10am - 4pm. 01225 774306 /  
townhallarts.co.uk. "This exhibition  
spans over 50 years of Ann Goldsmith's  
career as a painter responding to  
elements of a fragile world, including  
the delicate space between love and  
death."

## WINTER MIXED EXHIBITION

**Until 15 January**

Tincton Gallery, The Old School  
House, TINCLETON, near Dorchester,  
DT2 8QR. Friday - Monday 10am -  
5pm. 01305 848909 /  
tinctongallery.com. "A winter showing  
of a mixture of work from all our gallery  
artists."

## 'REEDBEDS AND WATERWAYS: JOURNEYS ACROSS THE SOMERSET LEVELS'

**Until 18 January**

Somerset Rural Life Museum, Chilkwell  
Street, GLASTONBURY, BA6 8DB.  
10am - 5pm. srlm.org.uk. "Artworks by  
the printmaker Jackie Curtis, produced  
in response to the landscapes and  
wildlife of the Somerset Levels."



## WOODLAND ART FOR WELL-BEING

"Lucy Neeve and Angel Morley with Wilderwoods Well-being Programme present imaginative 2 and 3 dimensional creations using a variety of techniques and materials, including printing, stitching, charcoal drawings and wild weaving."

**11 - 18 January:** Ace Arts, Market Place, SOMERTON, TA11 7NB. Tuesday - Saturday 10am - 5pm. 01458 273008 / acearts.co.uk.

## 'STRANGE & WONDERFUL BEINGS'

**Until 18 January**

Chippenham Museum, 9 - 10 Market  
Place, CHIPPENHAM, SN15 3HF.  
Monday - Saturday 10am - 4pm. 01249  
705020. "From tube posters to wartime  
sketches, explore the artistic output of  
Clifford and Rosemary Ellis and their  
legacy at the Bath Academy of Art in  
Corsham."

## 'DRAWN TO CRAFT'

**Until 18 January**

Salisbury Arts Centre, Bedwin Street,  
SALISBURY, SP1 3UT. Monday - Friday  
10am - 3pm. 01722 320333 /  
wiltshirecreative.co.uk. "Contemporary  
craft represents a large part of the  
visual arts. It is a platform upon which

skill, design and individual creativity  
meet. This year's winter exhibition at  
Salisbury Arts Centre includes work  
made by some of the top  
contemporary British craft practitioners.  
It is an exhibition which seeks  
inspiration from drawing and will reflect  
on the drawn line."

## 'SEA GARDEN'

**Until 26 January**

The Royal Albert Memorial Museum &  
Art Gallery, Queen Street, EXETER, EX4  
3RX. Tuesday - Sunday 10am - 5pm.  
01392 265858 / exeter.gov.uk/RAMM.  
"Sea Garden is a unique exhibition that  
brings together contemporary art in a  
wide range of media from video to  
textiles and photography to sculpture.

High-profile and internationally-  
acclaimed artists working on themes of  
the marine environment are displayed  
here, with many of the artworks being  
shown for the first time."

## RACHAEL ALLAIN: 'EPIPELAGIC DRIFTERS'

**Until 26 January**

The Royal Albert Memorial Museum &  
Art Gallery, Queen Street, EXETER, EX4  
3RX. Tuesday - Sunday 10am - 5pm.  
01392 265858 / exeter.gov.uk/RAMM.  
"Totnes-based artist Rachael Allain's  
film reveals planktonic life in the  
surface layer of Plymouth Sound  
through microscopic imaging  
techniques."



## RADIANCE

Fred Cuming RA Michael Fairclough Rachel Fenner  
Jeremy Gardiner David Inshaw Alfred Stockham  
Franny Owen ceramics continues until 12 January  
Petter Southall furniture Lynne Strover jewellery

counterpoint from 18 January

Martyn Brewster Daisy Cook Brian Graham  
Paul Wearing ceramics

Lunch at CAFÉ SLADERS

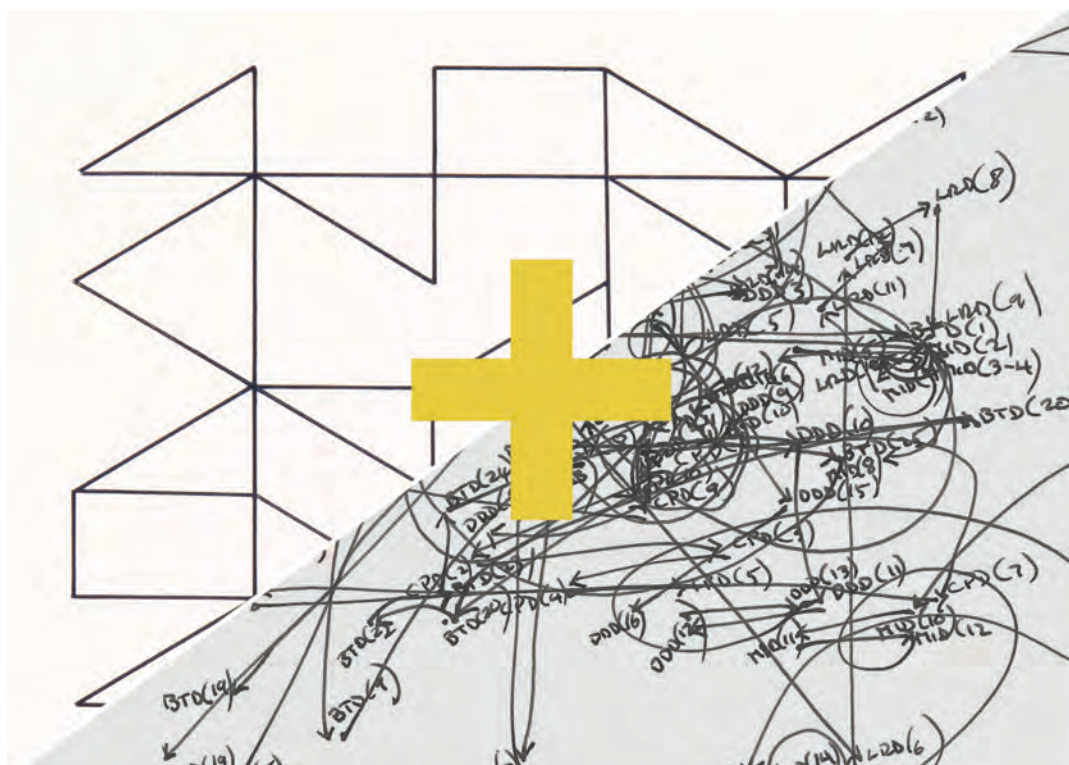
## SLADERS YARD

Contemporary Art, Furniture & Craft Gallery West Bay DT6 4EL  
e: gallery@sladersyard.co.uk t: 01308 459511 sladersyard.co.uk



Open every day 10am - 4.30pm  
Sundays Gallery closes 3pm.  
Evening events please see website





## CRISS CROSS: A KIND OF MUSIC

"Criss-Cross: A Kind of Music is a joint travelling exhibition that combines the prints and drawings of Martin Cody and Tony Martin. The overall look of linear construction is complimentary while the energies of each set contrast. This exhibition will develop throughout the tour as each artist adds new work."

**31 January - 5 February:** Centrespace Gallery, 6 Leonard Lane, BRISTOL, BS1 1EA. 11am - 5pm. 0117 929 1234 / centrespacegallery.com / tonymartinart.com / martincodysculpture.com.

### 'SUBLIME SYMMETRY'

**Until 2 February**

Russell-Cotes Art Gallery & Museum  
East Cliff Promenade,  
BOURNEMOUTH, BH1 3AA. Tuesday -  
Sunday 10am - 5pm. £7.50 / £4. 01202  
451858 / russellcotes.com. "William de  
Morgan revolutionised ceramic design  
in the late-Victorian period. From his  
fantastical beasts which wrap  
themselves around his ceramic vases,  
to his fanciful flora which meander  
across tiles, his designs continue to  
captivate today."

### SALLY MUIR: 'THE DOG SHOW'

**Until 9 February**

Victoria Art Gallery, Pulteney Bridge,  
BATH, BA2 4AT. 10.30am - 5pm. £4.50.  
victoriagal.org.uk. "Dog art."

### PETER BROWN: 'BATH IS IT'

**Until 9 February**

Victoria Art Gallery, Pulteney Bridge,  
BATH, BA2 4AT. 10.30am - 5pm. £4.50.  
01225 477233 / victoriagal.org.uk.  
"Over 100 new oil paintings and  
drawings by the ever popular Bath-  
based artist 'Pete the Street'. The  
exhibits celebrate the streets and green  
places of Bath as well as far-flung  
places where his easel has taken him."

### POOLE PRINTMAKERS: 'PRESSED'

**Until 1 March**

The Café Gallery, Russell-Cotes Art  
Gallery and Museum, East Cliff  
Promenade, BOURNEMOUTH, BH1  
3AA. Tuesday - Saturday 10am - 5pm.  
01202 451858 / russellcotes.com /  
poole-printmakers.org.uk.

### 'A SENSE OF PLACE'

**Until 15 March**

The Royal Albert Memorial Museum &  
Art Gallery, Queen Street, EXETER, EX4  
3RX. Tuesday - Sunday 10am - 5pm.  
exeter.gov.uk/RAMM. "Important works  
from RAMM's fine art collection from  
the 18th century to the late 20th  
century exploring the theme of place."

### 'LANDSCAPES OF THE MIND: THE ART OF TRISTRAM HILLIER'

**Until 18 April**

The Museum of Somerset, Taunton  
Castle, Castle Green, TAUNTON, TA1  
4AA. Tuesday - Saturday 10am - 5pm.  
museumofsomerset.org.uk. "Tristram  
Hillier RA (1905 - 1983) was one of the  
most accomplished and distinctive  
20th-century British artists."

### MIXED CHRISTMAS EXHIBITION

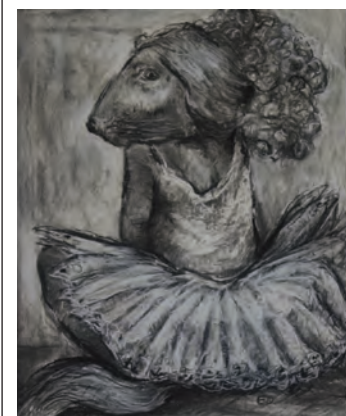
**Until 18 February**

John Leach Gallery, Muchelney Pottery,  
MUCHELNEY, near Langport, TA10  
ODW. Tuesday - Saturday 10am - 1pm,  
2 - 4pm. 01458 250324. "Paintings by  
John Gammans, glass by Sally Kent,  
copper bowls and sculpture by Joanne  
Horrobin, prints by Jackie Curtis,  
jewellery by Holly Webb, plus signed  
ceramics by John Leach, Mark  
Melbourne and Nick Rees."

### 'DO YOU BELIEVE IN MAGIC?'

**Until 19 April**

Bristol Museum & Art Gallery, Queens  
Road, BRISTOL, BS8 1RL. Tuesday -  
Sunday 10am - 5pm. 0117 922 3571 /  
bristolmuseums.org.uk. "Over 200  
fascinating objects and stories that  
reveal how magic has been used to  
heal, hunt and harm across the world."



### OPEN PRIZEWINNERS EXHIBITION

**2 - 25 January**

Ilminster Arts Centre, The Meeting  
House, East Street, ILMINSTER, TA19  
0AN. Monday - Friday 9.30am -  
4.30pm, Saturday 9.30am - 2.30pm.  
01460 54973 /  
themeetinghouse.org.uk. "Paintings,  
sculpture and drawings by the  
prizewinning artists of the 2019  
Ilminster Open competition."  
Above: Elaine Dixon 'Animal Wears  
Tutu' (Charcoal and chalk, 58 x 49 cm)

### 'WAREHAM BLUES'

**3 - 31 January**

The Creative Gallery, St John's Hill,  
WAREHAM, BH20 4NB. Monday -  
Saturday 10am - 5pm. 01929 551700 /  
creativegallerywareham.co.uk. "The  
many shades of blue used by our  
resident artists and makers will be on  
show. Sky blue through to cobalt blue  
in paint, clay, jewels and glass."

## WINTER SEASON AT GALLERY ON THE SQUARE

### COAST AND COUNTRY

Dorset landscape painters,  
including Colin Willey,  
Allan Green and Tony Parsons  
**Until 2 March**



**Queen Mother Square, Poundbury, Dorchester DT1 3BL**

Open daily, 9.30am to 5pm; Sundays 10am to 3pm

01305 213322

www.gallerypoundbury.co.uk



Our experiences shape what we do, and according to Joy Wolfenden Brown: the act of painting is inevitably an expression of self. "Painting finds its way, its truth."

Scratch the surface of any apparently well-ordered life and you will find that it has been touched by sadness or even tragedy. After studying Fine Art at Leeds University Joy pursued a career as an art therapist encountering a huge range of people, many of them vulnerable. These encounters have seeped into her paintings making them raw and poignant. Her work reveals a powerful empathy for those who are troubled, most often young women on the cusp of adulthood. She displays an innate understanding and concern for those who are struggling to find their way in the world.

Disquiet pervades these intimate understated paintings. They often portray a wide-eyed girl protectively cradling her own body; her unfocused stare confronts, not the viewer, but her own uncertainties. Joy used to do a lot of life-drawing life but now works from memory, a process that allows her to distil the essential body language into a true expression of feeling. It enables her subjects to take on their own sense of identity. There is a suggestion of naïveté in her simplification of the human form but the natural grace with which she handles paint complements her ability to portray emotion, leading to paintings that are more sophisticated than naïve.

Wolfenden Brown's intuitive understanding of tone and colour expresses itself in the muted hues of her chosen palette, dominated by Paynes Grey and Zinc White, reminiscent of another painter who often painted solitary women - Gwen John. Her work has a similar air of fragility but also the same expression of inner strength. The layered colour often starts with reds and other strong hues and then as the painting progresses, they return to her signature softer greys. The layering process gifts these works intensity through their sense of depth. She also takes breathtaking risks with space. These works allow her figures to breathe, to float, almost, in a sea of colour and space uncluttered by objects or a contextualising background. Occasionally there will be a bird, a lamb or even a dog but in her works on torn paper these are often separated from the figure by the gap



'HEARTBURST'

## JOY WOLFENDEN BROWN

between the two images. All of these pictorial devices emphasise the figure's isolation.

At a certain point Joy found herself scratching through the surface of the paint and realised in retrospect that this referenced the peeling walls of time-ravaged Byzantine and Renaissance frescoes that she had seen in Greece. Figure and background become almost interchangeable, her forms all but disappearing under the heavily scratched surfaces and paired down compositions. They unconsciously acknowledge the invisibility of women, frequently older women, who often fulfil the unnoticed but necessary tasks of family life.

Each series is a journey, each painting an exploration, a working out of the feelings and the subject. There is no preparatory sketching out of the composition, no initial drawing and she rejects all attempts to intellectualise her work or her process. Everything begins and ends on her chosen surface, either board or paper, the whole story is there. Her propensity for tearing up paintings and keeping the bits she likes and then adding those bits back at a later stage precludes the use of canvas.

The tearing fulfils a dual purpose. It allows her the freedom to launch into a painting without committing to the eventual outcome. As a compositional device it adds a certain frisson. The torn edge suggests something that has been injured, a break in perfection, something incomplete. There is a gap that cannot be bridged and the torn edge itself has an intrinsic beauty.

As a viewer one is constantly searching for the narrative, not necessarily Joy's – there often isn't one – but a universal narrative. What one finds is a universality in the girls and women themselves. Their haunting beauty invades your peace of mind, they lodge inside your head like the nagging ache of a tooth or the irresistible prodding at the tenderness of a bruise.

Fiona Robinson







CONTEMPORARY ART EXHIBITION

# Alchemy

Artefacts Reimagined

Poole Museum  
1 February – 19 April 2020

A compelling new exhibition inspired by objects from four museums.

The artworks, all in gold or white, were created by Ann-Marie James with techniques including painting, printmaking and gilding.

The works are displayed alongside the objects that inspired them. Poole Museum's *Midas* series is based on a decorative head from a Roman wine glass.

The artworks are for sale and a share of the proceeds will go to Wessex Museums.

For information email [wessexmuseums@poole.gov.uk](mailto:wessexmuseums@poole.gov.uk)

Wessex Museums Trust is a Charitable Incorporated Organisation 1171104

Image: Midas 4

## VISUAL ARTS



MARK BEESLEY 'STILL LIFE WITH NECTARINES' (Oil on canvas, 12 x 12 inches)

## A GLORIOUS GALLIMAUFRY

"Painting, photography, sculpture and assemblages from an eclectic group of artists."

**27 January - 15 February:** Ilminster Arts Centre, The Meeting House, East Street, ILMINSTER, TA19 0AN. Monday - Friday 9.30am - 4.30pm, Saturday 9.30am - 2.30pm. 01460 54973 / [themeetinghouse.org.uk](http://themeetinghouse.org.uk).

### 'INTERBEING'

**8 January - 8 February**

The Pound Arts Centre, Pound Pill, CORSHAM, SN13 9HX. 10am - 6pm. 01249 701628 / [poundarts.org.uk](http://poundarts.org.uk).

"Interbeing explores the interrelationship of the human body and the 'more than human' world. Together, artists James Aldridge and Jonathan Mansfield examine the ways that visual arts practice can enable experiences of connection and belonging."

### MARK NOBLE: 'UNTAME SOMERSET'

**8 January - 11 February**

Strode Theatre, Church Road, STREET, BA16 0AB. Monday - Friday 10am - 5pm, Saturday 10am - 2pm. 01458 442846 / [strodetheatre.org.uk](http://strodetheatre.org.uk). "Mark portrays Somerset in its wild and rugged beauty, from the Mendip Hills to the coastline of West Somerset, and from the beautiful levels to the ancient Isle of Avalon."

### NEW YEAR'S ART SALE

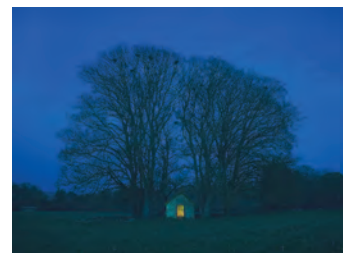
**9 - 29 January**

The Gallery, Symondsburys Estate, SYMONDSBURY, Bridport, DT6 6HG. 10.30am - 4.30pm. [lymebayarts.co.uk](http://lymebayarts.co.uk). "Start the year by treating yourself to an affordable piece of art created by members of Lyme Bay Arts in a wide range of media and subjects."

### 'MORE THAN THE SUM OF ITS PARTS'

**11 - 17 January**

Andelli Art, Mendip House, Upper Breach, SOUTH HORRINGTON, Wells, BA5 3QG. 10am - 5pm. 01749 572373 / [andelliart.com](http://andelliart.com). "Exhibition by Blue School sixth form students."



### SOUTH WEST ACADEMY

**11 January - 8 February**

Thelma Hulbert Gallery, Elmfield House, Dowell Street, HONITON, EX14 1LX. Tuesday - Saturday 10am - 5pm. 01404 45006 / [thelmahulbert.com](http://thelmahulbert.com).

"This exhibition marks the start of the Academy's 20th anniversary year and features work in a diverse range of media including paintings, sculpture, prints and photography."

Above: Judith Jones 'The Little Changing Hut' (C-type Durospect photograph)

### 'DIS/RUPT'

**11 January - 21 March**

Make Hauser & Wirth Somerset, 13 High Street, BRUTON, BA10 0AB. 10am - 4pm. 01749 814060 / [hauserwirth.com](http://hauserwirth.com). "New and existing work by contemporary makers Jochen Holz and Belfast-based Derek Wilson."

### 'DRAWING YOU IN...'

**13 - 24 January**

Guggleton Farm Arts, Station Road, STALBRIDGE, DT10 2RQ. 11am - 3pm. [guggletonfarmarts.com](http://guggletonfarmarts.com). "Come along, make your mark, and add to our gallery sized drawing, materials provided. This event will be filmed by time lapse camera."



# VISUAL ARTS

## BROADSTONE ART SOCIETY:

### 'WINTER EXHIBITION'

18 - 28 January

The Gallery Upstairs, Upton Country Park, POOLE, BH17 7BJ. 10am - 4pm. [broadstoneartsociety.org](http://broadstoneartsociety.org).

## ZANJIR AMAK MAHMOODIAN

18 January - 22 March

Arnolfini, 16 Narrow Quay, BRISTOL, BS1 4QA. Tuesday - Saturday 11am - 6pm. [arnolfini.org.uk](http://arnolfini.org.uk).

## ANGELICA MESITI: 'ASSEMBLY'

18 January - 26 April

Arnolfini, 16 Narrow Quay, BRISTOL, BS1 4QA. Tuesday - Saturday 11am - 6pm. [arnolfini.org.uk](http://arnolfini.org.uk).

## ALAN BROOK

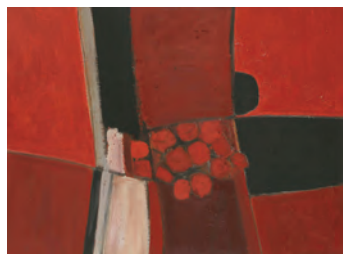
20 January - 20 April

Central Gallery, Royal United Hospitals, Combe Park, BATH, BA1 3NG. Monday - Sunday 8am - 8pm. 01225 824987 / [artatruh.org](http://artatruh.org). "Photographs recording a year's overland journey through Mexico, Belize, Costa Rica and Columbia to name just a few!"

## 'MARINER: A PAINTED SEA'

24 January - 21 March

The Edge, University of Bath, BATH, BA2 7AY. Tuesday - Saturday 11am - 5pm. [edgearts.org](http://edgearts.org). "Inspired by The Rime of The Ancient Mariner by Samuel Taylor Coleridge, this exhibition looks at what connects us across history and the present, showcasing a series of new commissions and artworks that consider the contemporary resonance of the poem."



## BRIAN RICE: '60 YEARS OF PAINTINGS AND PRINTS'

24 January - 3 May

The Royal Albert Memorial Museum & Art Gallery, Queen Street, EXETER, EX4 3RX. Tuesday - Sunday 10am - 5pm. 01392 265858 / [exeter.gov.uk/RAMM](http://exeter.gov.uk/RAMM). "A celebration of the abstract work of the distinguished West Country artist. This exhibition features paintings and prints created over the last 60 years." Above: 'The Applecrusher (Oil and mixed media on board, 1961)



DAISY COOK 'AUTUMN WOODLAND 1' (Oil on board, 40 x 50 cm)

## COUNTERPOINT

"This exhibition features three artists whose paintings inhabit the area between abstract and figurative painting, all looking at landscape, the coast, trees and woodland. Martyn Brewster and Brian Graham are Dorset-based and very concerned with the Dorset landscape and sea. Martyn Brewster's work focusing on light and water in the moment while Brian Graham always has a feeling for the long-distant past, looking for belief patterns, mood and memory of our earliest ancestors. Daisy Cook is London-based and deeply connected to the natural world and woodlands which she paints in abstracted forms and subtle colour combinations that are both very new and reminiscent of Ben Nicholson and painters of St Ives."

18 January - 1 March: Sladers Yard, West Bay Road, WEST BAY, Bridport, DT6 4EL. Monday - Saturday 10am - 4.30pm, Sunday 10am - 3pm. 01308 459511 / [sladersyard.co.uk](http://sladersyard.co.uk).

## 'SMALL WORLDS'

25 January - 21 March

Ace Arts, Market Place, SOMERTON, TA11 7NB. Tuesday - Saturday 10am - 5pm. 01458 273008 / [acearts.co.uk](http://acearts.co.uk). "Interactive large scale sculptures known as 'podules' create excitement and intrigue within an imaginative space, enhanced by the work produced by Imagine Learn & Create artists."

## DON MCCULLIN: 'THE STILLNESS OF LIFE'

25 January - 4 May

Hauser & Wirth Somerset, Durslade Farm, Dropping Lane, BRUTON, BA10 0NL. 10am - 4pm. 01749 814060 / [hauserwirth.com](http://hauserwirth.com). "This exhibition features over seventy landscape photographs, mapping Sir Don McCullin's intimate relationship with the

local landscape of Somerset and continued passion for global travel since the sixties."

## NOT VITAL: 'SCARCH'

25 January - 4 May

Hauser & Wirth Somerset, Durslade Farm, Dropping Lane, BRUTON, BA10 0NL. 10am - 4pm. 01749 814060 / [hauserwirth.com](http://hauserwirth.com).



## Woodland Art For Well-Being

11 - 18 January



Market Place, Somerton, Somerset TA11 7LX • 01458 273008 • [www.acearts.co.uk](http://www.acearts.co.uk)

## Small Worlds

25 January - 21 March



# VISUAL ARTS

## BRADEN MAXWELL: 'PROCESS'

28 January - 13 February

The Oliver Holt Gallery, Sherborne School, SHERBORNE, DT9 3LF. Tuesday and Thursday 1.30pm - 4.30pm. 01935 812249 / sherborne.org. "Braden Maxwell is an award-winning illustrator. Since graduating from BYU-Idaho, he has worked as a professional freelance illustrator and as an educator focusing primarily on drawing fundamentals, painting, and digital techniques. A defining attribute of his work is the prominent use of the figure throughout his paintings and illustrations."

## 'PART OF ME'

1 and 2 February

Hours, 10 Colston Yard, BRISTOL, BS1 5BD. 11am - 5pm. 07766 054659 / hours-space.com. "Angela Chilufya's work is about people of colour. The quote 'In moonlight, black boys look blue' inspired her to create paintings and portraits that are drowning in darkness."

## 'NOT EVERYTHING IS BLACK AND WHITE'

1 - 12 February

The Gallery, Symonds Estate, SYMONDSBURY, Bridport, DT6 6HG. 10.30am - 4.30pm. lymbayarts.co.uk. "Showcase of recent still lifes by watercolorist Trisha Hayman, plus Shoji screens and furniture by Mark Swan." Above: Trisha Hayman 'Pears in Bowl'

## 'WICKED WEAVERS'

1 - 29 February

The Creative Gallery, St John's Hill, WAREHAM, BH20 4NB. Monday - Saturday 10am - 5pm. 01929 551700 / creativegallerywareham.co.uk. "Bridget Eastman and Christine Gregory - the Wicked Weavers - weave their magic in glorious colours to brighten the dull days of February."

## DAVID BROOKE: 'MYSTERIOUS ADVENTURES'

1 February - 15 March

The Rotunda Gallery, Lyme Regis Museum, Bridge Street, LYME REGIS, DT7 3QA. Wednesday - Sunday 10am - 4pm. lymbayarts.co.uk. "Distinctive paintings that evoke mythology and folk tales."

## DAVE KING: 'THEN & NOW'

1 February - 19 April

The Shippon Gallery, Hook Farm, CHARDSTOCK, Axminster, EX13 7DD. Friday - Sunday 2pm - 5pm. 01460 220021 / theshippongallery.com. Sculpture.



DARRYN SHARPE 'ORIGINAL SIN' (Oil and oil pastel, 2019)

## MA & OTHER POSTGRADUATES 2020

"A visual celebration of emerging contemporary artistic talent from universities across the UK."

24 February - 21 March: Atkinson Gallery, Millfield School, STREET, BA16 0YD. Monday - Saturday 9.30am - 5pm. 01458 444322 / atkinsongallery.co.uk.



## 'ALCHEMY'

1 February - 19 April

Poole Museum, 4 High Street, POOLE, BH15 1BW. Monday - Saturday 10am - 4pm, Sunday 12noon - 4pm. 01202 262600 / poolemuseum.org.uk. "A compelling new exhibition inspired by objects from four museums. The artworks, all in gold or white, were created by Ann-Marie James with techniques including painting, printmaking and gilding. The works are displayed alongside the objects that inspired them. Poole Museum's 'Midas' series is based on a decorative head from a Roman wine glass."

Left: Midas 4

## ZARA MCQUEEN

7 - 28 February

Guggleton Farm Arts, Station Road, STALBRIDGE, DT10 2RQ. Tuesday - Saturday 11am - 3pm. 01963 363456. Paintings and collage.

## SARAH DUNCAN: 'SYZYGY'

13 February - 14 March

The Pound Arts Centre, Pound Hill, CORSHAM, SN13 9HX. 10am - 6pm. 01249 701628 / poundarts.org.uk.

## 'PRINTMAKERS OPEN'

15 February - 8 March

The Gallery, Symonds Estate, SYMONDSBURY, Bridport, DT6 6HG. 10.30am - 4.30pm. lymbayarts.co.uk. "Prints by emerging and established printmakers from the Southwest."

## 'SCHOOLS GO VISUAL IX'

17 - 29 February

Ilminster Arts Centre, The Meeting House, East Street, ILMINSTER, TA19 0AN. Monday - Friday 9.30am - 4.30pm, Saturday 9.30am - 2.30pm. themeeetinghouse.org.uk. "Inspirational and uplifting artwork by local school children."

## COLIN BENTLEY

20 - 26 February

Kennaway House, Cobourg Road, SIDMOUTH, EX10 8NG. 10am - 4.30pm. 01395 515551. "Dynamic landscape paintings depicting the Jurassic Coastline and surrounding area."

## 'TREASURE PLANET'

20 February - 21 March

Bridport Arts Centre, 9 South Street, BRIDPORT, DT6 3NR. Tuesday - Saturday 10am - 4pm. 07818 257665 / artwey.co.uk. "Exploring the beauty and intrinsic nature of the people, places, experiences and geology of the Jurassic Coast. An eclectic show of works by Artwey artists, encompassing diverse styles and media."

## 'THE WINTER VISITOR'

26 February - 10 March

Shaftesbury Arts Centre, 13 Bell Street, SHAFTESBURY, SP7 8AR. 10am - 4pm. 07730 400784 / 07713 277083 / shaftesburyartscentre.org.uk. "Paintings and drawings by Nick Andrew, paintings on reclaimed wood by Tanya Hinton."

## BOURNEMOUTH BAY ART GROUP:

'SPRING EXHIBITION'

27 February - 9 March

The Gallery Upstairs, Upton Country Park, POOLE, BH17 7BJ. 10am - 4pm. bournemouthbayart.co.uk. Paintings and prints.

SOMERSET ART WEEKS 2020  
**SOMERSET**  
**OPEN**  
**STUDIOS**  
19 SEPTEMBER - 4 OCTOBER

CALL TO SOMERSET ARTISTS

REGISTRATION NOW OPEN  
DEADLINE 31 MARCH 2020

Somerset Open Studios 2020 showcases the work of Somerset Art Works Members in a range of private and pop up workspaces across the county - celebrating the source of art, making, design and craft in Somerset.

somersetartworks.org.uk

SCW  
somerset  
art works



# MUSIC

January and February 2020



## THE BIG MOON

Playing your first proper live show in a year at the world's most prestigious festival is, by anyone's standards, a bit of a gamble. For The Big Moon, the decision to return to the stage and debut material from their second album, *Walking Like We Do*, during a secret set at Glastonbury 2019 proved to be the latest in a long line of risks that have paid off.

Ever since lead singer Juliette Jackson laid the foundations for the project, back in 2014, the London-based band have consistently gone with their gut, following what feels right rather than what's easiest. At a time where guitar-based indie had fallen out of favour, they were credited with breathing new life into the genre, and were subsequently awarded a Mercury Music Prize nomination for their 2017 debut, *Love in the 4th Dimension*. Impressive enough, even before you consider that - at the time of recording - the quartet were simultaneously performing backing band duties on Marika Hackman's album, *I'm Not Your Man*.

As per its predecessor, *Walking Like We Do* was written entirely by Jackson. But where with *Love in the 4th Dimension* The Big Moon simply set songs they'd been performing live for the best part of two years to tape, this time every single aspect of each new song was undefined and up for debate.

When lead guitarist Soph Nathan cites the number of choices they had to make as one of the most challenging aspects of making the album, Archer chimes in to agree: "With these songs, it was like: we can take them in any direction. Any of them have the potential to be big singles."

Jackson takes over: "For a while I think I was writing songs that were more like [those on] the first album because I felt like that's what we should do. But after six months I knew I wanted it to be sonically bigger, deeper, wider and more spacious than a rock album. We wanted to let the songs breathe a bit more. And while we still wanted it to have energy and all the right feelings, we just wanted to be more creative with how you conjure a mood."

Citing Vampire Weekend, Solange, James Blake and Frank Ocean as reference points, the band approached producer Ben Allen, whose diverse work with Animal Collective, Gnarls Barkley and Bombay Bicycle Club made him the perfect fit for the project. After an introductory Skype chat, the band travelled to his studio in Atlanta, Georgia.

Recorded early 2019, in three and a half weeks - compared to the 12 days their debut took - *Walking Like We Do* represents a giant leap forward for The Big Moon. "Before we were more of a plug-in and play kind of a band, but these songs need a bit more," Jackson explains. Frequently piano and keyboard-led rather than being reliant on grunge guitars, and rich in tight-knit vocal harmonies and rolling grooves, it's a cinematic but innately hook-laden set that truly expands the band's range.

More self-assured and creatively fearless than ever before, The Big Moon are ready for the next chapter.

**14 January:** Rough Trade Bristol, 3 New Bridewell, Nelson Street, BRISTOL, BS1 2QD. 6.30pm. 0117 929 0383 / roughtrade.com.



## UPCOMING HIGHLIGHTS



### New Year Johann Strauss Gala

Poole, Lighthouse – Wed 1 January

Exeter University, Great Hall – Thur 2 January

Cheltenham, Town Hall – Sat 4 January

Guildford, G Live – Wed 8 January

Taunton, The Brewhouse – Thur 9 January

Torquay, Riviera Centre – Fri 10 January

Weymouth, Pavilion – Sat 11 January

Celebrate the New Year in style with the BSO's annual Viennese gala featuring a bubbling selection of waltzes, gallops, polkas and marches by Johann Strauss and his contemporaries. Join us for an evening of delightful classics that will usher in the New Year with charm and style.

### Eastern Promise

Bournemouth, Pavilion – Sat 18 January

Enjoy a rich selection of classics from across Eastern Europe, including well-known staples such as Mozart's **Piano Concerto No.26** and hidden gems including Borodin's **Prince Igor Overture** alongside Schubert's **Symphony No.8 'Unfinished'** and a trio of Khachaturian's finest pieces.

To see all our upcoming concerts visit  
**bsolive.com 01202 669925**

You can buy tickets online this season directly through the BSO

## MUSIC



### BOWJANGLES: EXCALIBOW

"Comedy, energy, panache and almost every musical genre you can imagine. May contain traces of Abba."

**10 January:** Village Hall, FRAMPTON, DT2 9NF. 7.30pm. £10 / £6.  
07968 586906 / artsreach.co.uk.

**11 January:** Village Hall, CORFE CASTLE, BH20 5EE. 7.30pm. £10 / £6.  
07590 352219 / artsreach.co.uk.

**12 January:** Portman Hall, SHILLINGSTONE, DT11 0SF. 7.30pm. £10 / £6.  
07870 972089 / artsreach.co.uk.

#### DOM PRAG

**6 January**

Village Pump, The Lamb Inn, Mortimer Street, TROWBRIDGE, BA14 8BN. £10.  
07941 611262. Folk.

#### SIRPICO + CHIMNEYFISH + WENDY JANE

**8 January**

Lighthouse, 21 Kingland Road, POOLE, BH15 1UG. 8pm. 01202 280000. "The monthly showcase for emerging local music talent kicks off the New Year in the company of punchy guitar band Sirpico, the rustic sound of Chimneyfish and folksy singer songwriter Wendy Jane."

#### THE RIVIERA RAMBLERS

**10 January**

Ilminster Arts Centre, The Meeting House, East Street, ILMINSTER, TA19 0AN. 8pm. £16. 01460 54973. Jazz.

#### PAUL JONES AND DAVE KELLY

**10 January**

Marine Theatre, Church Street, LYME REGIS, DT7 3QA. 7.30pm. £25. 01297 442394. "The lead singer of Manfred Mann and The Blues Band is joined by the guitarist who played with John Lee Hooker and Howlin' Wolf."

#### JIM MORAY

**10 January**

Strode Theatre, Church Road, STREET, BA16 0AB. 7.30pm. £14.50. 01458 442846. "One of England's finest interpreters of traditional song."

#### THE PRODUCERS + COBALT BLUE

**10 January**

Perry Street Club, Waterlake Road, SOUTH CHARD, TA20 2SU. 7.30pm. £10. mojopromo.co.uk.

#### BSO: 'UNREQUITED LOVE'

**15 January**

Lighthouse, 21 Kingland Road, POOLE, BH15 1UG. 7.30pm. 01202 280000. "Rachmaninov's extrovert 'Rhapsody on a Theme of Paganini', Tcherépin's languid 'Prelude to La Princesse Iolita' and the ground breaking 'Symphonie Fantastique' by Berlioz."

#### PEOPLE'S STRING FOUNDATION: 'RES PUBLICA'

**16 January**

St George's Church, LANGTON MATRAVERS, BH19 3HB. 7.30pm. £9 / £6. 01929 423834 / artsreach.co.uk.

"Mixing world, classical and urban styles, this Cornish band is fronted by the virtuoso violinist Ben Sutcliffe (Rogue Theatre, Kneehigh and the Minack Theatre) with co-founder and composer Zaid Al-Rikabi at the core."



#### MARRINER, BEATSON AND PETROV

**17 January**

Bridport Arts Centre, South Street, BRIDPORT, DT6 3NR. 11.30am. £12. 01308 424204 / bridport-arts.com.

"Concerts in the West's 15th season is getting off to a tremendous start in 2020 with an impressive line-up of three classical music stars who are joining forces for a special fundraising mini tour of three concerts featuring Andrew Marriner (clarinet), Alasdair Beatson (piano) and Michael Petrov (cello, above), all established performers individually, but on this occasion will be playing together specially to raise funds for Concerts in the West."

#### MARRINER, BEATSON AND PETROV

**17 January**

Ilminster Arts Centre, The Meeting House, East Street, ILMINSTER, TA19 0AN. 7.30pm. £15. 01460 54973 / themeeetinghouse.org.uk. See above.



## PEOPLE'S STRING FOUNDATION: 'RES PUBLICA'

**17 January**

Village Hall, WEST STAFFORD, DT2  
8AG. 7.30pm. £9 / £6. 01305 261984 /  
artsreach.co.uk. See 16 January.

## MARRINER, BEATSON AND PETROV 18 January

The Dance House, Gouldsbrook View,  
North Street, CREWKERNE, TA18 7AL.  
6.45pm. £15. concertsinthewest.org.  
See 17 January.

## THE SCHMOOZENBERGS

**18 January**

The Pound Arts Centre, Pound Pill,  
CORSHAM, SN13 9HX. 7.30pm. £12 /  
£10. 01249 701628 / poundarts.org.uk.

## PEOPLE'S STRING FOUNDATION: 'RES PUBLICA'

**18 January**

Village Hall, BURTON BRADSTOCK,  
DT6 4QD. 7.30pm. £10 / £6. 01308  
897421. See 16 January.

## PEOPLE'S STRING FOUNDATION: 'RES PUBLICA'

**19 January**

Village Hall, TARRANT GUNVILLE,  
DT11 8JN. 7.30pm. £9 / £6 . 01258  
830361. See 16 January.

## BSO: 'SYMPHONIC SENSIBILITY'

**22 January**

Lighthouse, 21 Kingland Road, POOLE,  
BH15 1UG. 7.30pm. 01202 280000.

"Violinist Ning Feng is the featured  
soloist as the BSO perform Elgar's  
Violin Concerto, Shostakovich's Sixth  
Symphony, and Dreaming by the  
Fireside, a poignant symphonic  
interlude from Richard Strauss' comic  
opera Intermezzo."



## MOTHER EARTH

"Mother Earth released their debut album *Stoned Woman* in 1992 on Acid Jazz Records, quickly followed by their first single, a version of Santana's *Hope You're Feeling Better*. The next album, *The People Tree*, was hailed as a masterpiece and featured Paul Weller, James Taylor, and Dee C Lee. Further albums *You Have Been Watching* and *The Desired Effect* received critical acclaim before the band split in 1997. Lead vocalist and songwriter, Matt Deighton, joined Paul Weller's band for his *Heavy Soul* tour in early 1997 and remained as lead guitarist until late 1999 when he joined Oasis as replacement guitarist for Noel Gallagher who took a sabbatical from the band. Mother Earth are now back in 2020 with a new line up and single featuring Matt Deighton, Mick Talbot (The Style Council / Galliano), Ernie McKone (Galliano), Crispin Taylor (Galliano) and Sulene Fleming (The Brand New Heavies)."

**22 February:** Fiddlers Club, Willway Street, BRISTOL, BS3 4BG. 8pm. £16.50. 0117 987 3403 / fiddlers.co.uk.



## ALVORADA

**23 January**

Village Hall, WOOTTON FITZPAINE,  
DT6 6NF. 7.30pm. £10 / £6. 01297  
560948 / artsreach.co.uk. "From their  
original compositions to classics of the  
genre, Alvorada shows are filled with  
the irresistible swing of samba, the  
danceable grooves of forró, and a  
touch of tango and funk."

## CUMMINGS, DALE AND ASHWORTH + CRAIG MILVERTON TRIO

**24 January**

Ilminster Arts Centre, The Meeting  
House, East Street, ILMINSTER, TA19  
0AN. 8pm. £16. 01460 54973. Jazz.

## ALVORADA

**24 January**

Village Hall, PORTESHAM, DT3 4NS.  
7.30pm. £10 / £7. 01305 871035 /  
artsreach.co.uk. See 23 January.

## NINEBARROW

**25 January**

Marine Theatre, Church Street, LYME  
REGIS, DT7 3QA. 8pm. £16.50 / £14.  
01297 442394 / marinetheatre.com.  
"The multi-award winning duo combine  
breathtaking vocal harmonies and  
melodies, delivering original songs that  
are rooted in the landscape and history  
of the British Isles."

## ALVORADA

**25 January**

Village Hall, CHETNOLE, DT9 6NU.  
7.30pm. £10 / £8. 07966 177789 /  
artsreach.co.uk. See 23 January.



## THE THORNE TRIO

**26 January**

Rook Lane Chapel, FROME, BA11 1DN.  
10.45am. £13 / £12.50.  
fromeconcertsgroup.org. "Established  
wind ensemble comprising graduates  
of the Royal College of Music."

## STEPHEN FEARING

**26 January**

Mission Hall, SUTTON POYNTZ,  
Weymouth, DT3 6LY. 8pm. £15. 01305  
837299 / stephenfearing.com. "Multi-  
award winning artist and co-founder of  
Canadian roots-rock supergroup  
Blackie and The Rodeo Kings, Stephen  
Fearing is a beguiling teller of tales and  
a master guitarist. A mesmerising blend  
of roots, folk, and pop."

## BSO: 'BEETHOVEN 250'

**29 January**

Lighthouse, 21 Kingland Road, POOLE,  
BH15 1UG. 7.30pm. 01202 280000.  
"Chief Conductor Kirill Karabits is on  
the rostrum as the BSO perform  
Beethoven's First and Third  
Symphonies, with Stravinsky's Violin  
Concerto featuring guest soloist Stefan  
Jakiw."

**MILL FARM MUSIC**

MUSIC STUDIO  
VENUE  
ACCOMMODATION  
WILDLIFE AND FARM

MILL FARM MUSIC  
BRADFORD ABBAS, DORSET  
WWW.MILLFARM-DORSET.COM  
01935 413168



## THE NEIL MAYA QUARTET: 'THE BRUBECK PROJECT'

**30 January**

Village Hall, ASHMORE, SP5 5AQ.  
7.30pm. £9 / £6. 01747 811364 /  
artsreach.co.uk. "Let the fabulous  
Devon based Neil Maya Quartet take  
you back to 1959 and the cool sounds  
of one of the greatest jazz bands in  
existence, the Dave Brubeck Quartet."

## THE NEIL MAYA QUARTET: 'THE BRUBECK PROJECT'

**31 January**

Village Hall, EVERSNOT, DT2 0JY.  
7.30pm. £9 / £6. 07867 536754 /  
artsreach.co.uk. See 30 January.

## STEVE KNIGHTLEY

**31 January**

Shelley Theatre, Beechwood Avenue,  
BOURNEMOUTH, BH5 1LX. 7pm. £20.  
01202 413600 / shelleytheatre.co.uk.  
"Steve explores the themes and stories  
that inspire him and shows how music  
and words can become lyrics, and  
chords and notes can meld to create  
songs that acquire a life of their own!"

## 'FLYING FOLK'

**31 January**

Ilminster Arts Centre, The Meeting  
House, East Street, ILMINSTER, TA19  
0AN. 7.30pm. £10. 01460 54973.

## ARMONICO CONSORT + BAROQUE ORCHESTRA

**31 January**

Lighthouse, 21 Kingland Road, POOLE,  
BH15 1UG. 7pm. 01202 280000.  
"Christopher Monks conducts JS Bach's  
Mass in B Minor."



## IN CIDER FESTIVAL 2020

**31 January - 2 February**

Pontins Sand Bay Holiday Village, 67  
Beach Road, KEWSTOKE, Weston-  
super-Mare, BS22 9UR. 0871 222 0201  
/ fuelledbycider.com. "Three day  
indoor winter festival at Pontins Sand  
Bay with optional accommodation. All  
tickets include music, entertainment,  
meal and leisure facilities. Acts include  
Ferocious Dog (above), The Leylines,  
Mad Dog Mcree and Imprints."



## MIDGE URE: THE 1980 TOUR

"For the first time in the 40 years since its release Midge Ure will  
perform the classic Ultravox album *Vienna* in its entirety along with  
highlights from the first Visage album, both co-written, recorded and  
produced by Midge. Brought to life by Midge and his band Electronica,  
not only is this the first time *Vienna* has been performed as a whole  
since its release, but also the first time many of the Visage songs have  
ever been played live. The music will be performed in a stage setting  
designed to reflect the atmosphere and ambience the albums deserve."

**14 February:** Lighthouse, 21 Kingland Road, POOLE, BH15 1UG.  
7.30pm. 01202 280000 / lighthousepoole.co.uk.

## CHLOE FOY + NUALA HONAN

**1 February**

The Pound Arts Centre, Pound Pill,  
CORSHAM, SN13 9HX. 7.30pm. £12 /  
£10 / £5. 01249 701628 /  
poundarts.org.uk.

## THE NEIL MAYA QUARTET: 'THE BRUBECK PROJECT'

**1 February**

Village Hall, MARTINSTOWN, DT2 9JY.  
7.30pm. £10 / £6. 01305 889738 /  
artsreach.co.uk. See 30 January.

## PHIL SMITH

**5 February**

Lighthouse, 21 Kingland Road, POOLE,  
BH15 1UG. 8pm. 01202 280000 /  
lighthousepoole.co.uk. "Phil Smith's 20  
year career as an event singer has  
meant his own material has gone  
largely unheard... until now."

## WOR: 'BACK TO THE 1780S'

**5 February**

Village Hall, STUDLAND, BH19 3AE.  
7.30pm. £10 / £7. 01929 450204 /  
artsreach.co.uk. "18th century tunes  
from the Flanders region of Belgium."



## FLATS AND SHARPS

**6 February**

Salisbury Arts Centre, Bedwin Street,  
SALISBURY, SP1 3UT. 8pm. £12. 01722  
320333 / wiltshirecreative.co.uk.  
"Bluegrass four-piece from Penzance."

## THE SUNSET CAFE STOMPERS

**7 February**

Ilminster Arts Centre, The Meeting  
House, East Street, ILMINSTER, TA19  
0AN. 8pm. £16. 01460 54973 /  
themeetinghouse.org.uk. Jazz.

## PAUL CARRACK

**7 February**

Lighthouse, 21 Kingland Road, POOLE,  
BH15 1UG. 7.30pm. 01202 280000.

## PHIL KING

**7 February**

Village Pump, The Lamb Inn, Mortimer  
Street, TROWBRIDGE, BA14 8BN. £10.  
villagepump.org.uk. "Singer, songwriter  
and guitarist with a soulful voice and  
charismatic stage presence."

## XHOSA COLE QUARTET

**7 February**

Lighthouse, 21 Kingland Road, POOLE,  
BH15 1UG. 8pm. 01202 280000. Jazz.

## WOR: 'BACK TO THE 1780S'

**7 February**

Village Hall, WINTERBORNE  
STICKLAND, DT11 0NT. 7.30pm. £10 /  
£7. 01258 880920. See 5 February.

## WOR: 'BACK TO THE 1780S'

**8 February**

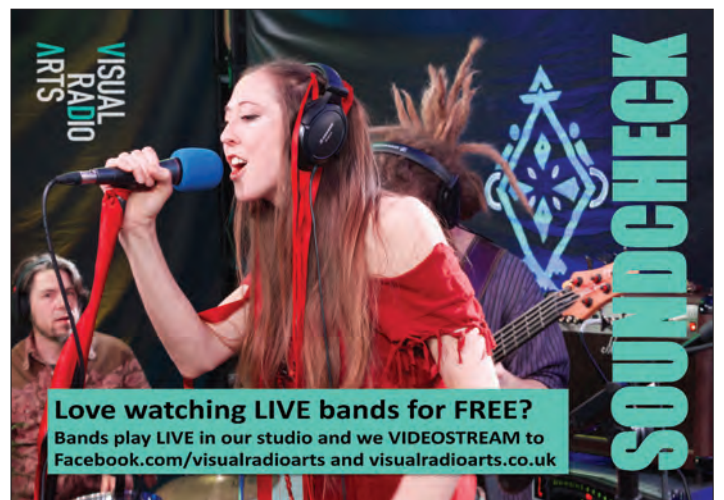
Memorial Hall, CRANBORNE, BH21  
5QB. 7.30pm. £12 / £6. 01725 517500  
/ artsreach.co.uk. See 5 February.

**SUBSCRIBE TO EVOLVER  
ONLINE**  
**evolver.org.uk**

## FREE EVOLVER LISTINGS

Exhibition and performance listings should be emailed to:  
listings@evolver.org.uk

Please supply information (in upper and lower case) in the following order:  
Event. Date(s). Venue, address (including postcode). Times. Admission fee  
(if any). Contact number / website. Up to 30 words about the event.



**Love watching LIVE bands for FREE?**  
Bands play LIVE in our studio and we VIDEOSTREAM to  
Facebook.com/visualradioarts and visualradioarts.co.uk



**FROM THE JAM** "SETTING SONS" 40TH ANNIVERSARY TOUR  
+ SPECIAL GUESTS THE VAPORS



FRI 24 JAN - CHELTENHAM TOWN HALL  
FRI 13 MAR - SWINDON MECA  
FRI 27 MAR - FROME CHEESE AND GRAIN  
SAT 28 MAR - BARNSTAPLE THE FACTORY  
THU 09 APR - SOUTHAMPTON THE BROOK\*

\* The Vapors will not be appearing at this venue

## JAH WOBBLE & THE INVADERS OF THE HEART

Thu 30 Jan  
Cardiff  
The Globe

Fri 31 Jan  
Bristol  
Thekla

Sat 01 Feb  
Southampton  
The Brook

Thu 13 Feb  
Exeter  
The Phoenix



FRIDAY 07 FEBRUARY  
BRISTOL, THE FIDDLERS

SATURDAY 08 FEBRUARY  
SOUTHAMPTON, THE BROOK

## MOTHER EARTH



BRISTOL  
THE FIDDLERS  
SATURDAY 22  
FEBRUARY

## THE STYLE COUNCILLORS



FRI 06 MAR - SOUTHAMPTON, THE BROOK  
SAT 14 MAR - GLOUCESTER, GUILDHALL  
FRI 23 MAR - BRISTOL, THE FIDDLERS  
FRI 06 MAR - FROME, CHEESE AND GRAIN  
FRI 20 MAR - OXFORD, THE BULLINGTON



'Peaceful Times' Tour 2020

Richard Jobson • Bruce Watson • Jamie Watson

Frome  
Cheese and Grain  
Tuesday 14 April

## CLEARWATER CREEDENCE REVIVAL



THURSDAY 30 APRIL  
SOUTHAMPTON, THE BROOK  
WEDNESDAY 23 SEPTEMBER  
SALISBURY, CITY HALL  
THURSDAY 24 SEPTEMBER  
FROME, CHEESE GRAIN  
FRIDAY 25 SEPTEMBER  
OXFORD, THE BULLINGTON  
FRIDAY 23 OCTOBER  
STROUD, SUBSCRIPTION ROOMS

## BLANCMANGE



thu 22 oct **exeter** phoenix  
sat 24 oct **southampton** the brook

## THE SMYTHS

MEAT IS MURDER

35th ANNIVERSARY TOUR



STROUD - SUBSCRIPTION ROOMS  
FRIDAY 01 MAY

## THE CHRISTIANS



SOUTHAMPTON, THE BROOK  
FRIDAY 06 NOVEMBER





# Concerts IN THE West

CHAMBER MUSIC MINI-TOURS  
IN THE WEST COUNTRY

17 JANUARY TO 7 NOVEMBER 2020  
BAROQUE TO CONTEMPORARY

**CONCERTS IN THE WEST 2020 - 15TH SEASON**

- 17, 18 JANUARY ANDREW MARRINER  
ALASDAIR BEATSON  
& MICHAEL PETROV (FUNDRAISING TOUR)
- 21, 22 FEBRUARY NICHOLAS MULROY, JOHN REID  
& WILLIAM LINDLEY
- 5, 6, 7 MARCH NICHOLAS MCCARTHY
- 3, 4 APRIL ELOISA-FLEUR THOM, STEPHEN UPSHAW  
& SAM ARMSTRONG
- 14, 15, 16, 17 MAY TRIO KLEIN
- 18, 19, 20, 21 JUNE FERIO SAXOPHONE QUARTET
- 17, 18 JULY CREATING CARMEN
- 10, 11, 12, 13 SEPT EMMA HALNAN & EBLANA
- 23, 24 OCTOBER SAVITRI GRIER & RICHARD UTTLEY
- 6, 7 NOVEMBER LINOS PIANO TRIO

2020 CHAMBER MUSIC MINI-TOURS IN  
DORSET AND SOMERSET

concertsinthewest@gmail.com - 01823 252658  
CATHERINE MADDOCKS DIRECTOR

[www.concertsinthewest.org](http://www.concertsinthewest.org)




**Artsreach** 30 YEARS OF ENTERTAINING RURAL COMMUNITIES

**NEW SPRING SEASON**  
of professional theatre, music and dance across Dorset

[www.artsreach.co.uk](http://www.artsreach.co.uk)

## MUSIC



### SMOKE FAIRIES

"Smoke Fairies have announced the release of their first album for four years. In the making of *Darkness Brings The Wonders Home*, Smoke Fairies drew inspiration from mysteries both real and imagined: sea monsters, flocks of crows taking flight in extravagant formation, and strange creatures dwelling in the mud near their new South London abode."

**8 February:** Rough Trade Bristol, 3 New Bridewell, Nelson Street, BRISTOL, BS1 2QD. 7.30pm. £12. 0117 929 0383 / roughtrade.com.

#### BSO RESONATE STRINGS: 'STRING SERENADE'

**8 February**  
Village Hall, LYCHETT MATRAVERS, BH16 6DF. 7.30pm. £10 / £6. 01202 623299. "This engaging concert will reflect the wonderful diversity of the classical string repertoire, featuring music from Vivaldi to Brahms, Bach to Holst and Joplin to Bartok."

#### SAM LEE

**8 February**  
Marine Theatre, Church Street, LYME REGIS, DT7 3QA. 7.30pm. £19 / £16 / £14 / £13. 01297 442394. "A highly inventive folk song interpreter, a passionate conservationist, and committed song collector, Sam has broken the boundaries between folk and contemporary music."

#### EDUARDO NIEBLA

**8 February**  
The Pound Arts Centre, Pound Pill, CORSHAM, SN13 9HX. 7.30pm. £14 / £12. 01249 701628 / poundarts.org.uk. "Stunning flamenco jazz."

#### MINI BSO: 'LET'S DANCE'

**8 February**  
Lighthouse, 21 Kingland Road, POOLE, BH15 1UG. 11am. 01202 280000. "This family concert is a great way to introduce children to classical music and the instruments of the orchestra."

#### ERIC WALKER

**8 February**  
Salisbury Arts Centre, Bedwin Street, SALISBURY, SP1 3UT. 12noon. 01722 320333 / wiltshirecreative.co.uk.

#### SHERBORNE TOWN BAND

**8 February**  
Martock Church, Church Street, MARTOCK, TA12 6JL. 7.30pm. £10 / £9. 01935 829576.

#### BSO: 'ELECTRIFYING RHYTHMS'

**12 February**  
Lighthouse, 21 Kingland Road, POOLE, BH15 1UG. 7.30pm. 01202 280000 / lighthousepoole.co.uk. "Robert Trevino conducts the BSO in performing Stravinsky's 'War' Symphony, Szymanowski's First Violin Concerto and Rachmaninov's Third Symphony."



NEW VINYL AND CDS  
INSTRUMENTS AND ACCESSORIES  
INSTRUMENT REPAIRS  
GIFTS

33A SOUTH STREET  
BRIDPORT DT6 3NY  
[BRIDPORTMUSICCENTRE.CO.UK](http://BRIDPORTMUSICCENTRE.CO.UK)  
01308 455660

VINYL • CD • DVD • AND MORE!

OFFICIAL  
RECORD  
STORE  
RETAILER

**phoenix  
sound**

LOADS OF  
INDIE  
EXCLUSIVES

QUEEN STREET, NEWTON ABBOT, DEVON TQ12 2AQ  
[phoenixsound.co.uk](http://phoenixsound.co.uk) • [phoenixsound1@gmail.com](mailto:phoenixsound1@gmail.com)  
01626 334942 • Friend us on facebook

RSD





## THE NICK MACLEAN QUARTET

**14 February**

Ilminster Arts Centre, The Meeting House, East Street, ILMINSTER, TA19 0AN. 8pm. £15. 01460 54973 / themeeetinghouse.org.uk. "Award-winning modern jazz from Canada."



## WINDBORNE

**14 February**

Village Hall, MILBORNE ST ANDREW, DT11 0JX. 7.30pm. £11 / £6. 01258 839230 / artsreach.co.uk. "This stunningly powerful close harmony vocal group from New England present Song on the Times, their project that collects music from working class movements for peoples' rights in the US and UK over the past 400 years, and sings them for the struggles of today. The group was catapulted to new heights when a clip of them singing in protest outside Trump Tower went viral, and their crowdfunding project raised 1,600% of its goal from 2,600 people in every State and 22 countries."

## SPINDLE ENSEMBLE + MISHRA

**15 February**

The Pound Arts Centre, Pound Pill, CORSHAM, SN13 9HX. 7.30pm. £12 / £10. 01249 701628 / poundarts.org.uk. "Experimental, Bristol based neo-impressionist chamber quartet performing original compositions by composer and pianist Daniel Inzani."

## BSO TRIO: FLUTE, VIOLA AND HARP

**15 February**

Village Hall, NETHER COMPTON, DT9 4QA. 7.30pm. £12 / £10. 01935 413220 / artsreach.co.uk. "Bournemouth Symphony Orchestra musicians Barbara Brown (flute), Tom Beer (viola) and Eluned Pierce (harp) present a repertoire of trio music featuring Debussy, Leclair and Arnold Bax in a wonderful spring concert."



## JAH WOBBLE

"With a perfect combination of global music, reggae and punk influences, Jah Wobble has entranced the world with his hypnotic bass riffs for over four decades and has become one of Britain's most influential and distinct bass players. Accompanied by his band, Invaders of the Heart, Jah Wobble is reborn into a new decade as defiant as ever."

**31 January:** The Thekla, The Grove, East Mud Dock, BRISTOL, BS1 4RB. 7pm. £17.50. 0115 896 4456 / theklabristol.co.uk.

**13 February:** The Phoenix, Gandy Street, EXETER, EX4 3LS. 7.30pm. £21 / £18.50. 01392 667080 / exeterphoenix.org.uk.

## ENSEMBLE BASH

**15 February**

Salisbury Arts Centre, Bedwin Street, SALISBURY, SP1 3UT. 8pm. £20 / £18. 01722 320333 / wiltshirecreative.co.uk. "One of the world's most innovative percussion ensembles."

## SOMERSET CHAMBER CHOIR

**16 February**

King's College Chapel, South Road, TAUNTON, TA1 3LA. 4pm. £18 / £15 / £11. somersetchamberchoir.org.

## A4 BRASS QUARTET

**16 February**

Rook Lane Chapel, FROME, BA11 1DN. 10.45am. £13 / £12.50. fromeconcertsgroup.org. "Lyrical and high-octave works, from Bach to Bernstein."

## BSO TRIO: FLUTE, VIOLA AND HARP

**16 February**

Bridehead, LITTLEBREDY, DT2 9JA. 3pm. £10 / £6. 01308 482232 / artsreach.co.uk. See 15 February.

## BSO: 'GRAND TOURISTS'

**19 February**

Lighthouse, 21 Kingland Road, POOLE, BH15 1UG. 7.30pm. 01202 280000 / lighthousepoole.co.uk. "Chief Conductor Kirill Karabits takes the rostrum as the BSO perform Mendelssohn's First Piano Concerto with pianist Jeremy Denk, as well as Schubert's Fifth Symphony and Haydn's Symphony No 105."

## MULROY, REID AND LINDLEY

**21 February**

Ilminster Arts Centre, The Meeting House, East Street, ILMINSTER, TA19 0AN. 7.30pm. £15. 01460 54973 / themeeetinghouse.org.uk.

## YE VAGABONDS

**21 February**

The Pound Arts Centre, Pound Pill, CORSHAM, SN13 9HX. 7.30pm. £14 / £12. 01249 701628. Folk.

## SALISBURY UKULELE BAND

**22 February**

Salisbury Arts Centre, Bedwin Street, SALISBURY, SP1 3UT. 12noon. 01722 320333 / wiltshirecreative.co.uk.

## THE RIDGEWAY SINGERS & BAND: 'TEA WITH WILLIAM BARNES'

**23 February**

Village Hall, STALBRIDGE, DT10 2NF. 2.30pm. £12. 01963 362355.

## 'VERDI REQUIEM'

**23 February**

The Tithe Barn, DUNSTER, Exmoor, TA24 6RY. 2.30pm. Free entry. 01643 821425 / yarnmarkethotel.co.uk. "Choral singing performance."

## GABRIELA MONTERO

**26 February**

Lighthouse, 21 Kingland Road, POOLE, BH15 1UG. 7.30pm. 01202 280000. "Gabriela Montero and the BSO Principals perform Rachmaninov's Piano Sonata No 2 and Shostakovich's Piano Quintet as well as her own Improvisations and 'A Piece for Ruth'."

## THIBAUT BLANCHARD & KYLE

**NASH-BAKER**

**27 February**

Lighthouse, 21 Kingland Road, POOLE, BH15 1UG. 1.05pm. 01202 280000. "Cello and piano duo."

## BEN OTTEWELL

**29 February**

Shelley Theatre, Beechwood Avenue, BOURNEMOUTH, BH5 1LX. 7pm. £18 / £15. 01202 413600. "Gomez songwriter Ben Ottewell returns to the Shelley Theatre following his previous sold-out solo show."



FROME

2 - 3 King Street, BA11 1BH  
01373 464666

WARMINSTER

5 Weymouth Street, BA12 9NP  
01985 213707

ravesfromthegrave.com



## NO.1 INDEPENDENT RECORD SHOP IN THE SOUTH WEST LONG LIVE VINYL

New vinyl releases and re-issues

Records of all types bought and sold

Wednesday to Saturday  
10am - 5pm



Official Record Store Day retailer



Saturday  
18 April  
2020

01308 458077 • clocktowermusic.co.uk  
10a St Michael's Trading Estate, Bridport, Dorset DT6 3RR

## NOW OPEN!



New and used vinyl, turntables, books, t-shirts and more

8a Pope Street, Brewery Square, Dorchester, DT1 1GW

Tuesday to Saturday from 10am  
07703 388500



# PERFORMANCE

January and February 2020



## MARK BRUCE COMPANY: RETURN TO HEAVEN

A dark and captivating new production from the multi award-winning Mark Bruce Company, *Return To Heaven* at Lighthouse, Poole's centre for the arts, on Wednesday 12 February is contemporary dance theatre at its most potent and ambitious.

Drawing on the mythology of Ancient Egypt, two intrepid explorers - played by Dane Hurst and Eleanor Duval - set off on a journey towards a mythical land where the demons and gods they disturb unleash something within themselves.

The journey descends into a nightmare when the explorers find themselves being hounded by a freakish compound of scientists and supernatural forces who will stop at nothing in order to coerce the explorers to play their part in the resurrection of an ancient deity.

When it comes to multi-award winning dance theatre companies, the Mark Bruce Company is in a class of its own. Winner of the Sky South Bank Arts Award for *Dracula* and a number of Critics' Circle awards and nominations the company consistently presents work of infinite mystery and drama to increasing audiences in the UK and abroad.



The company's visionary Artistic Director, Mark Bruce, is inspired by mystery and imagination, by the dark nooks and crannies of human behaviour, by myths and legends, by music of many eras and by physical expression. He employs a unique choreographic language, distinctive imagery and eclectic musical scores for every production which are further lauded for their filmic quality.

**30 January - 1 February:** Merlin Theatre, Bath Road, FROME, BA11 2HG. [merlintheatre.co.uk](http://merlintheatre.co.uk) / 01373 465949.

**5 - 8 February:** Tobacco Factory, Raleigh Road, Southville, BRISTOL, BS3 1TF. 0117 902 0344 / [tobaccofactorytheatres.com](http://tobaccofactorytheatres.com).

**12 February:** Lighthouse, 21 Kingland Road, POOLE, BH15 1UG. 7.45pm. 01202 280000 / [lighthousepoole.co.uk](http://lighthousepoole.co.uk).



PERFORMANCE



**'THE SLEEPING BEAUTY'**  
**15 and 16 January**  
Lighthouse, 21 Kingland Road, POOLE, BH15 1UG. 7pm (Thursday matinee 2pm). [lighthousepoole.co.uk](http://lighthousepoole.co.uk). "St Petersburg Classic Ballet's delightful new staging of *The Sleeping Beauty* is propelled by Tchaikovsky's glorious music and one of the most popular fairy tales of them all."

**JAMES ROWLAND: 'REVELATIONS'**  
**16 January**  
Village Hall, BROADOAK, DT6 5NL. 7.30pm. £9 / £6. 01308 424922 / [artsreach.co.uk](http://artsreach.co.uk). "A few years ago, James' best friends Sarah and Emma asked for his sperm to start a family. This is the tale of what happened next, and what happened after that - an epic story about friendship, faith, life, death, foxes, snow buddies, and trying to do the right thing even when it involves taking all your clothes off."

**JAMES ROWLAND: 'REVELATIONS'**  
**17 January**  
Village Hall, MELBURY OSMOND, DT2 0LS. 7.30pm. £9 / £6. 01935 83453 / [artsreach.co.uk](http://artsreach.co.uk). See 16 January.

**'THE NUTCRACKER'**  
**17 and 18 January**  
Lighthouse, 21 Kingland Road, POOLE, BH15 1UG. 7pm (Saturday matinee 2pm). [lighthousepoole.co.uk](http://lighthousepoole.co.uk). "St Petersburg Classic Ballet's spectacular version of the timeless fairy tale is a treat for all the family."

**KEITH FARNAN + DINESH NATHAN + ROSIE WILBY**  
**18 January**  
Lighthouse, 21 Kingland Road, POOLE, BH15 1UG. 8pm. 01202 280000 / [lighthousepoole.co.uk](http://lighthousepoole.co.uk). Comedy.

**JAMES ROWLAND: 'REVELATIONS'**  
**18 January**  
Memorial Hall, PIDDLTRENTHIDE, DT2 7QF. 7.30pm. £10 / £8. 01300 348247. See 16 January.

**'NICE'**  
**19 January**  
The Lyric, BRIDPORT, DT6 3LX. 6pm. £12 / £5. 01308 424901 / [the-lyric.com](http://the-lyric.com). "A nice new show."



THE MOUSETRAP

"The longest running show of any kind in the history of theatre, Agatha Christie's classic has kept audiences guessing since opening night."

**21 - 25 January:** Lighthouse, 21 Kingland Road, POOLE, BH15 1UG. 7.45pm (Wednesday and Saturday matinee 2.30pm). 01202 280000 / [lighthousepoole.co.uk](http://lighthousepoole.co.uk).



**'MAME'**  
**21 - 25 January**  
Salisbury Playhouse, Malthouse Lane, SALISBURY, SP2 7RA. 7.30pm (Thursday and Saturday matinee 2.15pm). £28 / £16. 01722 320333 / [wiltshirecreative.co.uk](http://wiltshirecreative.co.uk). "Life is a banquet, and most poor suckers are starving to death! That's the motto of Mame Dennis, one of musical theatre's all-time greatest heroines."

**'FEED'**  
**23 - 25 January**  
The Salberg, Salisbury Playhouse, Malthouse Lane, SALISBURY, SP2 7RA. 7.45pm (Saturday matinee 2.45pm). £13.50 / £9. 01722 320333 / [wiltshirecreative.co.uk](http://wiltshirecreative.co.uk).

**JONNY PELHAM**  
**24 January**  
Marine Theatre, Church Street, LYME REGIS, DT7 3QA. 8pm. £12 / £10. 01297 442394 / [marinetheatre.com](http://marinetheatre.com). Comedy.

**'LIVING SPIT'S SWAN LAKE'**  
**24 and 25 January**  
Salisbury Arts Centre, Bedwin Street, SALISBURY, SP1 3UT. 7.30pm (Saturday matinee 2.30pm). £14 / £12. 01722 320333 / [wiltshirecreative.co.uk](http://wiltshirecreative.co.uk). "Theatre Orchard and Living Spit have teamed up to make the smallest ballet ever performed (probably)."

**'MACBETH - THE PANTOMIME!'**  
**24 January - 1 February**  
Village Hall, High Street, LYTCHELT MATRAVERS, BH16 6DD. Friday and Saturday 7.30pm (Saturday matinee 2.30pm). £10 / £5. 01202 912351.



**'THE LITTLE PRINCE'**  
**25 January**  
Village Hall, CERNE ABBAS, ST2 7GY. 2.30pm. £6 / £5. 07823 778758. "Protein Dance's new show invites us to look at the world through one's heart and to reconnect with our inner child."

JANUARY 2019 (FREE)  
**BRIDPORT TIMES**  
A MONTHLY CELEBRATION OF PEOPLE, PLACE AND PURVEYOR  
PULLING POWER

**BRIDPORT TIMES**  
A MONTHLY CELEBRATION OF PEOPLE, PLACE AND PURVEYOR  
**OUT NOW AND ONLINE**  
[bridporttimes.co.uk](http://bridporttimes.co.uk)



# Lighthouse

POOLE'S CENTRE FOR THE ARTS



**TUE 4 & WED 5 FEBRUARY**

## JANE EYRE

Blackeyed Theatre's new adaptation of one of the greatest works of English fiction is captivating, brooding and intensely powerful. Jane Eyre is a moving and unforgettable portrayal of one woman's quest for equality and freedom – one of the great triumphs of storytelling.

**7.45pm | THEATRE**



**SATURDAY 15 FEBRUARY**

## RECKONINGS

New Writing from Doppelganger. Red Hot Pokers by Annie Herridge finds Jay fighting homophobia and living his mother's disgust; while Reckonings is John Foster's ghost story about a murder victim revisiting the scene of the crime.

**8pm | THE SHERLING STUDIO**



**FRIDAY 28 FEBRUARY**

## VOLPONE

A biting fresh version of Ben Johnson's classic satire of cunning and greed performed by the South West's African-Caribbean theatre company Tangle and inspired by Southern African township theatre with a soundtrack of new and vintage jazz.

**8pm | THE SHERLING STUDIO**



**WED 12 FEBRUARY**

## Marc Bruce Company RETURN TO HEAVEN

A dark and captivating new dance production in which two explorers search the dark mysteries of the ancient world and enter a perilous land beyond time and death.

**7.45pm | THEATRE**



**FRI 20 & SAT 21 MARCH**

## ENGLISH TOURING OPERA

**MOZART:** Così Fan Tutte  
**HANDEL:** Giulio Cesare

English Touring Opera present a season with two of the most celebrated operas, featuring a large chorus and live orchestra.

**7.30pm | THEATRE**

01202 280000

www.lighthousepoole.co.uk



## PERFORMANCE



## SPITZ & CO: LES GLORIBLES

"Following on from the success of *Gloriator*, and *Glorilla*, the award-winning Spitz & Co are proud to present the third and final show of the trilogy *Les Gloriables*. Inspired by Victor Hugo's classic French novel *Les Misérables*, legendary French actress Gloria Delaneuf is determined to create a piece of theatre with the power to reunite Europe. She has dreamed a dream, and her UK tour manager Josephine Cunningham is going to help her make it happen. Vive La Revolution!"

**24 January:** Village Hall, BUCKLAND NEWTON, DT2 7BZ. 7.30pm. £9 / £6. 01300 345455 / artsreach.co.uk.

**25 January:** Village Hall, DRIMPTON, DT8 3RF. 7.30pm. £9 / £6. 01308 867241 / artsreach.co.uk.

**26 January:** Village Hall, WINFRITH, DT2 8JR. 7.30pm. £9 / £6. 01305 853783 / artsreach.co.uk.

**14 February:** Pound Arts Centre, Pound Pill, CORSHAM, SN13 9HX. 7.30pm. £12 / £10. 01249 701628 / poundarts.org.uk.

### STUART GOLDSMITH: 'END OF'

**25 January**  
The Pound Arts Centre, Pound Pill, CORSHAM, SN13 9HX. 8pm. £10. poundarts.org.uk. Comedy.

### 'LAUGHS AT THE LYRIC'

**28 January**  
The Lyric, BRIDPORT, DT6 3LX. 8pm. 01308 424901 / the-lyric.com. "Comedy night."

### 'SPIRIT OF THE DANCE'

**29 January**  
Lighthouse, 21 Kingland Road, POOLE, BH15 1UG. 7.45pm. 01202 280000 / lighthousepoole.co.uk. "The international smash hit dance show."

### 'YOU'RE NOT AS FUNNY AS YOUR FATHER'

**30 January - 1 February**  
The Salberg, Salisbury Playhouse, Malthouse Lane, SALISBURY, SP2 7RA. 7.45pm (Saturday matinee 2.45pm). £13.50. 01722 320333. "Harry Secombe's son Andy explores the nature of inherited celebrity."



### 'ONCE UPON A TIME...'

**31 January**  
Village Hall, BROADMAYNE, DT2 8EW. 7.30pm. £10 / £6. 07443 659912. "Gonzo Moose are back with a brand new fairy tale adventure, bursting with physical comedy, absurd jokes and magical illusion."

### 'PARTY AT COKER COURT!'

**31 January**  
Coker Court, EAST COKER, Yeovil, BA22 9JW. 7.30pm. £15. osrprojects.co.uk. "Spell-binding live performance by artist and singer Phil Owen, followed by a Silent Disco run by the brilliant Shush Events. Don't forget your dancing shoes!"

### SHEILA GHELANI AND SUE PALMER: 'COMMON SALT'

**1 February**  
OSR Projects, Church Street, WEST COKER, Yeovil, BA22 9BD. 3 and 7pm £5 / £3. osrprojects.co.uk. "Common Salt is a performance around a table - a 'show and tell'. It explores the colonial and geographic histories of England and India, from the first Enclosure Act and the start of the East India Company in the 1600s, to 21st century narratives of nature, empire and memory."

### 'THE CURIOUS GARDEN'

**1 February**  
Lighthouse, 21 Kingland Road, POOLE, BH15 1UG. 11am and 2pm. 01202 280000 / lighthousepoole.co.uk.

### LOST VOICE GUY + NATHAN CATON + TANIA EDWARDS

**1 February**  
Lighthouse, 21 Kingland Road, POOLE, BH15 1UG. 8pm. 01202 280000. "Lee Ridley, aka Lost Voice Guy, who won Britain's Got Talent in 2018 may not be able to talk but he definitely has something to say and his comedy will leave you speechless."

### 'ONCE UPON A TIME...'

**1 February**  
Village Hall, STALBRIDGE, DT10 2NF. 7.30pm. £9 / £6. 01963 362355 / artsreach.co.uk. See 31 January.



# PERFORMANCE

## 'THE RAMAYANA'

**1 February**

Village Hall, MORDEN, BH20 7DL.  
7.30pm. £10 / £7. 01929 459431 /  
artsreach.co.uk. "Storyteller Emily  
Hennessey and virtuoso sitar player  
Sheema Mukherjee conjure up a vivid,  
wild and beguiling world in this  
retelling of the much loved Indian epic.  
Expect the unexpected."

## 'THE RAMAYANA'

**2 February**

Springhead Trust, FONTMELL MAGNA,  
SP7 0NU. 5pm. £10 / £8. 01747 811853  
/ artsreach.co.uk. See 1 February.

## 'JANE EYRE'

**4 and 5 February**

Lighthouse, 21 Kingland Road, POOLE,  
BH15 1UG. 7.45pm. 01202 280000.

## 'BLOOD WEDDING'

**6 - 22 February**

Salisbury Playhouse, Malthouse Lane,  
SALISBURY, SP2 7RA. 7.30pm  
(Thursday and Saturday matinees  
2.15pm). £27 / £15. 01722 320333 /  
wiltshirecreative.co.uk. "Barney Norris'  
explosive retelling of Lorca's classic  
tragedy sets the action firmly in a  
modern day Wiltshire community that's  
rocked by revelations and gossip."

## TOM STADE

**7 February**

Salisbury Arts Centre, Bedwin Street,  
SALISBURY, SP1 3UT. 8pm. £18 / £16.  
wiltshirecreative.co.uk. Comedy.

## 'THE LATEST SHOW'

**8 February**

The Lyric, BRIDPORT, DT6 3LX. 8pm.  
£12. 01308 424901 / the-lyric.com.  
"New show from the anarchic and  
defiantly different duo Charlie Bicknell  
and Louise Innes."

## 'COASTAL COMEDY'

**8 February**

Lighthouse, 21 Kingland Road, POOLE,  
BH15 1UG. 8pm. 01202 280000.

## PIP UTTON: 'AND BEFORE I FORGET I LOVE YOU, I LOVE YOU'

**9 February**

Memorial Hall, PIDDLTRENTHIDE,  
DT2 7QF. 4pm. £10 / £6. 01300 348247  
/ artsreach.co.uk. "Brand new, moving  
and affectionate performance about  
the devastating effects of Alzheimer's  
disease, not only on the sufferer but on  
family, friends and carers."

## PETER GILL: 'THE WIT AND SONGS OF NOEL COWARD'

**13 February**

Village Hall, BROADOAK, DT6 5NL  
7.30pm. £9 / £6. 01308 424922.



## SANDI TOKSVIG: NATIONAL TREVOR

"Some people harbour ambitions to be a National Treasure, but following a misunderstanding with a friend Sandi Toksvig has decided instead to become a National Trevor - half misprint, half Danish comedian, novelist, actor and broadcaster."

**17 January:** Lighthouse, 21 Kingland Road, POOLE, BH15 1UG.  
7.30pm. 01202 280000 / lighthousepoole.co.uk.

## JESSICA FOSTEKEW: 'HENCH'

**13 February**

The Pound Arts Centre, Pound Pill,  
CORSHAM, SN13 9HX. 8pm. £12.50.  
01249 701628 / poundarts.org.uk.

## BLACK CHERRY

**14 February**

Lighthouse, 21 Kingland Road, POOLE,  
BH15 1UG. 8pm. 01202 280000 /  
lighthousepoole.co.uk. "The  
improvisational comedy troupe return  
with something else they'll make up as  
they go along."

## PETER GILL: 'THE WIT AND SONGS OF NOEL COWARD'

**14 February**

Village Hall, SYDLING ST NICHOLAS,  
DT2 9NX. 7.30pm. £8 / £5. 01300  
341735 / artsreach.co.uk.

## 'A CELEBRATION OF OPERA'

**14 February**

Lighthouse, 21 Kingland Road, POOLE,  
BH15 1UG. 7.45pm. 01202 280000.  
"London Festival Opera present a  
romantic night for Valentine's Night."

## 'KNOT'

**14 February**

Strode Theatre, Church Road, STREET,  
BA16 0AB. 7.30pm. £17.50. 01458  
442846. "Physically exhilarating and  
touchingly poignant, Knot is a very  
modern affair told with delicate  
sensitivity through breath-taking  
acrobatics and heart wrenching dance."

## SALAMANDA SWING BAND: 'VALENTINE'S DANCE'

**14 February**

Village Hall, Heath Green Road,  
STUDLAND, BH19 3BT. 7.30pm. £10 /  
£8. 07763 768738.

## 'RECKONINGS'

**15 February**

Lighthouse, 21 Kingland Road, POOLE,  
BH15 1UG. 8pm. 01202 280000.

## PETER GILL: 'THE WIT AND SONGS OF NOEL COWARD'

**16 February**

Village Hall, ALDERHOLT, SP6 3RB.  
2pm. £8 / £5. 01425 653766 /  
artsreach.co.uk. See 13 February.

## KODO: 'LEGACY'

**16 February**

Lighthouse, 21 Kingland Road, POOLE,  
BH15 1UG. 7.30pm. 01202 280000.  
"The legendary Kodo return to their  
roots with a physically stunning and  
musically sensational show which puts  
their huge drums centre stage and  
reworks a treasure trove of signature  
pieces created across almost 40 years  
of international touring."



## 'THE BIRD SHOW'

**17 February**

Village Hall, WINFRITH, DT2 8JR.  
11am. £6 / £5. 01305 853783. "The  
Bird Show uses live music, puppetry  
and lots of silly bird jokes in this heart-  
fluttering physical comedy."

## 'THE ARK AND DOVE'

**17 February**

Village Hall, MORDEN, BH20 7DL.  
3pm. £8 / £5. 01929 459431. "Award  
winning storyteller and actor Michele  
O'Brien weaves her magic to captivate  
audiences through storytelling, dance  
and puppetry."

## Every job starts with a blank canvas.

At AztecMedia we have over 25 years experience in design and marketing. So whether you're an independent artist needing a website or a large venue looking for promotional material, everything we do is tailored to suit who you are.

**aztecmedia**  
born to be creative®

01935 477 073 • AztecMedia.eu





# PERFORMANCE

## 'THE BIRD SHOW'

**18 February**

Village Hall, SIXPENNY HANDLEY, SP5 5NJ. 11am. £6 / £5. 07786 790349 / artsreach.co.uk. See 17 February.

## 'THE ARK AND DOVE'

**18 February**

The Lyric, BRIDPORT, DT6 3LX. 2pm. £8 / £6. 01308 424901 / the-lyric.com. See 17 February.

## 'THE ARK AND DOVE'

**19 February**

Lighthouse, 21 Kingland Road, POOLE, BH15 1UG. 11am and 2pm. 01202 280000. See 17 February.

## 'THE AMAZING BUBBLE MAN'

**19 February**

Lighthouse, 21 Kingland Road, POOLE, BH15 1UG. 2pm. 01202 280000 / lighthousepoole.co.uk.

## 'THE BIRD SHOW'

**19 February**

Village Hall, WOOTTON FITZPAINE, DT6 6NF. 11am. £6 / £5. 01297 560948 / artsreach.co.uk. See 17 February.

## 'MAZMEG AND THE HONEYBEES'

**19 February**

Village Hall, MILBORNE ST ANDREW, DT11 0JX. 4pm. £7 / £5. 01258 839060 / artsreach.co.uk. "Weaving threads of Devon folklore, an original soundtrack by Dartmoor musicians and shape-shifting puppetry this is Angel Heart's most enchanting show yet."

## 'MAZMEG AND THE HONEYBEES'

**20 February**

St Andrew's Primary School, YETMINSTER, DT9 6LS. 4pm. 01935 873719. See 19 February.

## 'WHO AM I'

**21 February**

The Lyric, BRIDPORT, DT6 3LX. 8pm. £12. 01308 424901 / the-lyric.com. "Interdisciplinary performance about identity, notions of home, migration and memory using movement, spoken word, film and music."

## 'MAZMEG AND THE HONEYBEES'

**21 February**

Village Hall, PORTESHAM, DT3 4NS. 3pm. £6 / £3. 01305 871035 / artsreach.co.uk. See 19 February.

## AHIR SHAH: 'DOTS'

**22 February**

Lighthouse, 21 Kingland Road, POOLE, BH15 1UG. 8pm. 01202 280000. "A stand-up show about the necessity, utility, and absence of certainty."

## JOZ NORRIS

**22 February**

Salisbury Arts Centre, Bedwin Street,



## VOLPONE

"The classic satire of cunning and greed performed by African-Caribbean theatre company Tangle and inspired by Southern African township theatre with a soundtrack of new and vintage jazz. Volpone is rich, filthy rich, but for him the glory of accumulating wealth is more thrilling than its simple possession."

**28 February:** Lighthouse, 21 Kingland Road, POOLE, BH15 1UG. 8pm. 01202 280000 / lighthousepoole.co.uk.

**29 February:** The Pound Arts Centre, Pound Pill, CORSHAM, SN13 9HX. 7.30pm. £12 / £10. 01249 701628 / poundarts.org.uk.

SALISBURY, SP1 3UT. 8pm. £12 / £10. 01722 320333 / wiltshirecreative.co.uk. "Award-winning cult idiot."

## 'THE ARK AND DOVE'

**22 February**

Village Hall, SANDFORD ORCAS, DT9 4RX. 3pm. £7 / £5. 01963 220171 / artsreach.co.uk. See 17 February.

## 'LAUGHS AT THE LYRIC'

**25 February**

The Lyric, BRIDPORT, DT6 3LX. 8pm. 01308 424901 / the-lyric.com. "Comedy night."

## 'FRIENDSICAL'

**25 - 29 February**

Lighthouse, 21 Kingland Road, POOLE, BH15 1UG. 7.45pm (Thursday and Saturday matinees 2.30pm). 01202 280000 / lighthousepoole.co.uk. "A new parody musical inspired by the gang in Friends, the iconic TV show."

## 'SHIRLEY VALENTINE'

**25 February - 7 March**

Salisbury Playhouse, Malthouse Lane, SALISBURY, SP2 7RA. 7.30pm (Thursday and Saturday matinee 2.15pm). £26 / £14. 01722 320333.

## FLO AND JOAN: 'BEFORE THE SCREAMING STARTS'

**27 February**

The Pound Arts Centre, Pound Pill, CORSHAM, SN13 9HX. 8pm. £14. 01249 701628. "Musical comedy."



## 'WOMANS'

**27 February**

School Theatre, GILLINGHAM, SP8 4QR. 7.30pm. £10 / £6. 01747 833844 / artsreach.co.uk. "Fast-paced and physical show focusing on how women are routinely written out of history."

## 'WOMANS'

**28 February**

Village Hall, SIXPENNY HANDLEY, SP5 5NJ. 7.30pm. £13 / £10. 07786 790349 / artsreach.co.uk. See 27 February.

## VAMOS THEATRE: 'DEAD GOOD'

**28 February**

Tacchi-Morris Arts Centre, School Road, Monkton Heathfield, TAUNTON, TA2 8PD. 7.30pm. £15 / £13 / £9. 01823 414141 / tacchi-morris.com.

## 'THE WALKING MAN SHOW'

**28 February**

Village Hall, IBBERTON, DT11 0EL. 7.30pm. £9 / £6. 01258 860222. "Multimedia and musical show exploring Tuareg culture."

## 'THE CANTERBURY TALES'

**28 February**

Ilminster Arts Centre, The Meeting House, East Street, ILMINSTER, TA19 0AN. 8pm. £15. 01460 54973.

## NICK PAGE

**28 February**

Marine Theatre, Church Street, LYME REGIS, DT7 3QA. 8pm. £10 / £9. 01297 442394 / marinetheatre.com. Comedy.

## 'WOMANS'

**29 February**

Village Hall, CORFE CASTLE, BH20 5EE. 7.30pm. £9 / £6. 07590 352219 / artsreach.co.uk. See 27 February.

## 'THE WALKING MAN SHOW'

**29 February**

Village Hall, POWERSTOCK, DT6 3TB. 7.30pm. £9 / £6. 01308 485474 / artsreach.co.uk. See 28 February.

4 COLOURS  
to make a  
THOUSAND  
SHADES

#COLOURINGYOURFUTURE

**S&G**  
STEPHENS & GEORGE  
PRINT GROUP

WWW.STEPHENSANDGEORGE.CO.UK  
01685 388888 | SALES@STEPHENSANDGEORGE.CO.UK

GOAT MILL ROAD | DOWLAIS | MERTHYR TYDFIL | CF48 3TD

FOLLOW US ON TWITTER @SandGPrintGroup



# THE DORSET OPEN 2020

## PRELUDE

### CALLING ALL WESSEX ARTISTS

Wessex artists are invited to submit work in any media for **THE DORSET OPEN** (formerly the Dorchester Arts Open).

Work chosen by the selection panel will be shown at Bridport Arts Centre during Dorset Art Weeks 2020.

#### PRIZES:

- Solo exhibition with promotional support at Dorset County Museum in May / June 2021
- £250 cash
- Exhibit A feature in Evolver Magazine

Entry opens Monday 6 January

Deadline for submissions Thursday 26 March

#### FULL DETAILS AND ENTRY FORMS:

[dorsetvisualarts.org/opportunities](http://dorsetvisualarts.org/opportunities)

#### SELECTION PANEL:

**Simon Barber** (Editor, Evolver magazine)

**Chris Dunseath** (Winner of Exhibition Prize, Dorchester Arts Open 2017)

**Jem Main** (Creative Director, Dorset Visual Arts)

**Jon Murden** (Director, Dorset County Museum)

**Anna Powell** (Director, Sladers Yard)

**Suzy Rushbrook** (Programme Curator, Dorset Visual Arts)

**Mark Tattersall** (Artistic Director, Dorchester Arts)

**DORSET VISUAL ARTS** **DorchesterARTS** **EVOLVER**  
**DORSET COUNTY MUSEUM**



**FROME FESTIVAL 2020**

## FROME OPEN ART TRAIL

# CALL TO ARTISTS

Register online, closing date March 1, 11pm  
[www.fromeopenstudios.co.uk](http://www.fromeopenstudios.co.uk)

**4 - 12 JULY 2020**

For more information email  
[info@fromeopenstudios.co.uk](mailto:info@fromeopenstudios.co.uk)

*In association with the Frome Festival*

### WORKSHOPS FOR ARTISTS at the Summerleaze Gallery SP3 6BY

*The workshops take place in an idyllic setting just north of Shaftesbury.  
Refreshments and delicious home-cooked lunches are included  
in the cost of the workshops.*

30 Jan **A DAY WITH RODIN** Charlotte Moreton £105 inc. materials

27 and 28 Feb **STILL LIFE PAINTING** Anthony Connolly RP £195

31 Mar - 3 Apr **PORTRAIT PAINTING** Anthony Connolly RP £375

15 and 16 Jun **INTRODUCTION TO ETCHING** Anthony Connolly RP  
£255 inc. materials

18 - 20 Jun **IN THE LANDSCAPE** Richard Pikesley NEAC £295

24 Jun **PORTRAIT DEMO** Andrew James RP £20 (with lunch £35)

24 - 26 Jun **PORTRAIT PAINTING** Andrew James RP £375

30 Jun - 3 Jul **LINO PRINTING** Caroline Chourou MRSS £425 inc. materials

Tuesdays 14 Jan, 11 Feb, 10 Mar, 28 Apr, 12 May, 9 Jun, 7 Jul **LIFE DRAWING**  
with Anthony Connolly RP £85 per day (£495 for all 7 days)

[www.josephineco.co.uk](http://www.josephineco.co.uk) 07717 471145



**ARTYFACTS STUDIOS BRIDPORT**

## STUDIO UNITS FOR RENT

Calling all artisans, craftsmen and retailers. Units for rent in the heart of Bridport. Work and selling spaces under one roof.

**40 St Michaels Lane, Bridport, Dorset DT6 3RD**  
(opposite Waitrose car park)

**Get in touch:**  
07818 057730 / 01308 426598 /  
[angela.boon123@btinternet.com](mailto:angela.boon123@btinternet.com)



*Fine art giclée prints for: Artists, Photographers,  
Digital Artists and everyone needing great prints!*

For more information call John on: 01747 852 221

or visit our website:

[www.salt-of-the-earth.biz](http://www.salt-of-the-earth.biz)

*Award-winning fine art printer*



*"The quality of the prints are second to none due  
to the skills and knowledge of John Roland"*

Göran Hahne [www.sotegallery.biz/goran-hahne.html](http://www.sotegallery.biz/goran-hahne.html)





## EVOLVER SPONSORS AND OUTLETS



**EVOLVER** IS AVAILABLE **FREE** AT THE  
FOLLOWING WESSEX OUTLETS:

**ABBOTSBURY:** Dansel Gallery. **AXMINSTER:** Axminster Arts Café, Sublyme Café. **BATH:** Art Salon, Bath Artists' Studios, Beaux Arts, Edgar Modern Gallery, Fringe Arts, Holburne Museum of Art, Michael Tippet Centre, University of Bath, Victoria Art Gallery. **BERE REGIS:** Cyril Wood Court. **BLANDFORD:** Bryanston Arts Centre, Forum Café, Forum Framers. **BOURNEMOUTH:** All Fired Up, Artcetera, Flux Art Supplies, Miramar Hotel, Pavilion Dance, Royal Bath Hotel, Russell-Cotes Museum & Art Gallery. **BOWER HINTON:** The Hollies Hotel. **BRADFORD ON AVON:** Wiltshire Music Centre. **BRIDGWATER:** Bridgwater Arts Centre, Clayhill Arts, Engine Room. **BRIDPORT:** Beach & Barnicott, Bridport Arts Centre, Bridport Old Books, Bridport Music Centre, The Bull Hotel, Clocktower Music, Literary and Scientific Institute, Lyric Theatre. **BRISTOL:** Bocabar, Bristol Fine Art, Centrespac, Colston Hall, Create Centre, Folk House, Jamaica Street Artists, Lime Tree Gallery, Bristol Old Vic, PRSC Gallery, RWA, Spike Island, St George's, Tobacco Factory, Trinity Centre, UWE, Watershed. **BROADWINDSOR:** Craft & Design Centre. **BRUTON:** Bruton Art Factory, Bruton Castle, At The Chapel, Hauser and Wirth. **BUDLEIGH SALTERN:** Brook Gallery. **BURNHAM ON SEA:** Princess Theatre & Arts Centre, Seabreeze Gallery. **CASTLE CARY:** Bailey Hill Bookshop, David Simon Gallery, Trowbridge Gallery. **CHARD:** Art Café, Barleymow's, Hornsbury Mill Hotel. **CHEDDAR:** Sketch Café. **CHEDDON FITZPATRICK:** Hestercombe Gallery. **CHRISTCHURCH:** Hatch Gallery, Hayloft Gallery, Red House Museum, Regent Centre. **CLEVEDON:** Fizz Gallery. **CONGRESBURY:** Church House Designs. **CORFE CASTLE:** Boilerhouse Gallery, Gallery 41, Morton House Hotel. **CORSHAM:** Pound Arts. **CREWKERNE:** Phoenix Books. **CROCKERTON:** Bull Mill Arts. **CROWCOMBE:** Halsway Manor. **CULLOMPTON:** Cullompton Community College. **CULMSTOCK:** The Strand Stores. **DEVIZES:** Bluestone Gallery, St

John's Art & Deco, Wiltshire Museum, Wine Street Gallery. DORCHESTER: Artsreach, Dorchester Arts, Duke's, Frank Herring & Sons, Gallery on The Square, The Little Keep, Vinyl Van. EAST LAMBROOK: East Lambrook Manor Gardens. EXETER: Academy of Music, The Cavern, Corn Exchange, Exeter School of Art, Phoenix Arts Centre, Royal Albert Memorial Museum, Southgate Gallery. FROME: Blue Swan Arts, Cheese and Grain, Fiat Lux, Hubnub Centre, Merlin Theatre, Mount, Ravens From The Grave, Rook Lane Arts. GILLINGHAM: Bowridge Gallery, The Idea Works, Slade Centre. GLASTONBURY: Abbey Muse Gallery, Bocabar, Glastonbury Galleries, Red Brick Building, Rural Life Museum. HEMYOCK: Healthy Living Centre. HIGHCLIFFE: In The Frame. HOLTON HEATH: Holton Lee. HONITON: The Beehive, Boston Tea Party, Hybrid Gallery, Strummer Pink, Thelma Hulbert Gallery. ILMINSTER: Dillington House, Ilminster Arts Centre, Millhouse. LANGPORT: 4 Every Cloud, Art Tea Zen, Shakspeare Glass, Somerset Art Works. LANGTON MATRAVERS: Burngate Stone Carving Centre. LYME REGIS: Blue Lias, Coombe Street Gallery, Fine Art Framing, Marine Theatre, Studio 19. MARLBOROUGH: Framemakers. MARTOCK: 303 Gallery, Martock Gallery. MERE: Beaumont Gallery. MILDENHALL: Rabley Contemporary Drawing Centre. MILTON ABBAS: Dorset Crafty Barn, Flux n' Flame. MINEHEAD: Courtyard Framing, Leo Davey Gallery, Regal Theatre. MORCOMBELAKE: Artwave West. MUCHELNEY: John Leach Gallery. NEW MILTON: Forest Arts. NORTH CURRY: Community Café. OTTERTON: Otterton Mill. POOLE: Arts University Bournemouth, Bournemouth University Atrium Gallery, Guildhall Gallery, Josephine Wall Gallery, Lighthouse, The Gallery Upstairs, Poole Museum. PORLOCK: Churchgate Gallery, Melody Art. PORTLAND: B-Side Outpost, White Stones. SALISBURY: City Hall, Fisherton Mill, Framemakers, Noble Art Supplies, Salisbury Arts Centre, Salisbury Museum, Salisbury Playhouse, Studio 53, Wiltshire Gallery, Young Gallery. SEATON: Arts Café. SEAVINGTON: Village Shop. SHAFTESBURY:

The Cygnet, Grosvenor Hotel, Salt of the Earth, Shaftesbury Arts Centre. SHEPTON MALLET: One Craft Gallery. SHERBORNE: Artslink, Jerram Gallery, New Digby Hall, Old Barn Framing Gallery, Winstone's. SIDMOUTH: East Devon Art Academy, Flo and Us, Kennaway House, Winstone's. SOMERTON: ACE Arts, Gifted Company & Gallery Coffee Shop. SOUTH CADBURY: Chapel Cross Tea Rooms. SOUTH PETHERTON: David Hall. STALBRIDGE: Dike & Sons. STOKE ST GREGORY: Willows & Wetlands Centre. STOURHEAD: First View Gallery. STREET: Millfield School Atkinson Gallery, Strode Theatre. STURMINSTER NEWTON: The Exchange, Poet's Corner, Wessex Photographic. SWANAGE: Durlston Castle, L'Artisne Gallery, Mowlem Theatre, Mulberry Bush Gallery, Purbeck New Wave Gallery, Quarr Gallery, Sansom Gallery. SYMONDSBURY: Symondsbyury Gallery. TAUNTON: Brewhouse Theatre, CIC CIC, Framers, Ginger Fig, Jane Amour, Mount Somerset Hotel, Queen's College, Tacchi-Morris Arts Centre, University Centre Somerset. TINCLETON: Tincleton Gallery. TISBURY: Messums Wiltshire. TIVERTON: Lantic Gallery. TROWBRIDGE: Arc Theatre, The Lamb, Trowbridge Arts. VERWOOD: The Hub. WAREHAM: Creative Gallery, Fuzebrock Studios, Priory Hotel, Rex Cinema. WATCHET: Contains Art. WELLINGTON: Old Brick Workshop. WELLS: A2 Gallery, Andelli Art, Good Earth, Heritage Courtyard Studios, Somerset Guild of Craftsmen Gallery and Shop. WEST BAY: Sladers Yard. WEST COKER: Lanes, Old School Room. WESTHAY: Somerset Crafts. WESTON-SUPER-MARE: Frame Station, Playhouse, Weston College. WEYMOUTH: Weymouth College, Weymouth Pavilion. WILLTONT: Breeze Art Gallery. WIMBORNE: Allendale House, Square Records, Walford Mill Craft Centre. WOODBURY: Woodbury Studio Gallery. WRINGTON: Barleywood Studios. YEOVL: Octagon Theatre. YETMINSTER: Old School Gallery.

Plus selected TOURIST INFORMATION  
CENTRES and LIBRARIES throughout Wessex.



BOILERHOUSE GALLERY



THE CREATIVE GALLERY

**DORSET VISUAL ARTS**



**Lighthouse**  
POOLE'S CENTRE FOR THE ARTS



## SLADERS YARD

**SCW**  
somerse  
art works



**Tincleton Gallery**

**WILTSHIRE  
CREATIV**

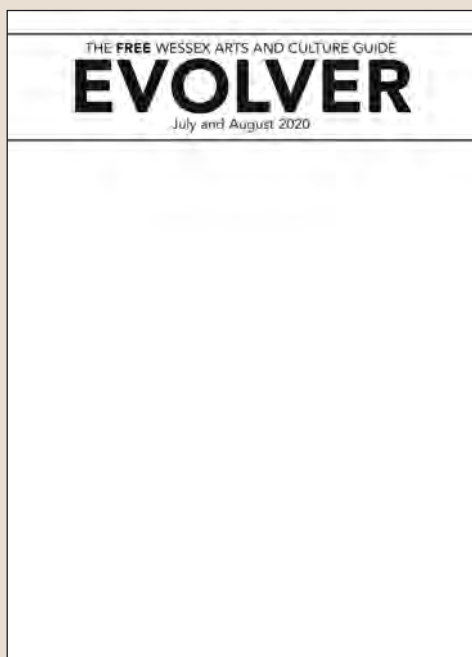
**EVOLVER** IS SPONSORED BY:

ACE Arts • Acoustic Distribution • Activate  
Artreach • Atkinson Gallery • Aztec Media  
B-Side • Black Swan Arts • Boilerhouse Gallery  
Bournemouth Symphony Orchestra  
The Creative Gallery • Dorset Visual Arts  
Gallery on the Square • Lighthouse • Mount  
Salt of the Earth • Sladers Yard  
Somerset Art Works • Stephens & George  
Tincton Gallery • Wiltshire Creative



# EVOLVER PRIZE 2020

**FIRST PRIZE: EVOLVER 118 FRONT COVER + £1,000**



ARTISTS, PHOTOGRAPHERS and DESIGNERS are invited to submit actual cover size 2D work in any media for selection for the **FRONT COVER OF EVOLVER 118** (July and August 2020 issue) + **£1,000**

The judges will also select an additional 49 WORKS for a **TOP 50 EXHIBITION** at ACE ARTS, Somerton (4 July - 1 August) and publication in EVOLVER 118

#### JUDGES:

**Simon Barber** (Editor, Evolver)  
**Nina Gronw-Lewis** (Artistic Director, Ace Arts)  
**Debbie Lee** (Winner, Evolver Prize 2019)  
**Will Wilkinson** (Photographer)

**DEADLINE: THURSDAY 14 MAY 2020**

Further information:  
[evolver.org.uk/evolverprize](http://evolver.org.uk/evolverprize)  
[prize@evolver.org.uk](mailto:prize@evolver.org.uk)



**EVOLVER**

|           |          |
|-----------|----------|
| NAME      |          |
| ADDRESS   |          |
|           | POSTCODE |
| TELEPHONE | EMAIL    |

## EVOLVER PRIZE 2020 ENTRY FORM

| TITLE OF WORK | MEDIUM | SELLING PRICE * |
|---------------|--------|-----------------|
| 1             |        |                 |
| 2             |        |                 |
| 3             |        |                 |

SUBMISSION FEE (£10 PER WORK):

£

\* EVOLVER will take a 40% commission from this price if the work is exhibited and sold

☐ I HAVE PAID ONLINE AT **PAYMENTS.EVOLVER.ORG.UK** AND MY REFERENCE NUMBER IS \_\_\_\_\_

We accept payments by credit / debit card online at [payments.evolver.org.uk](http://payments.evolver.org.uk)  
 Alternatively, go to [evolver.org.uk](http://evolver.org.uk) and click on the Evolver Prize heading

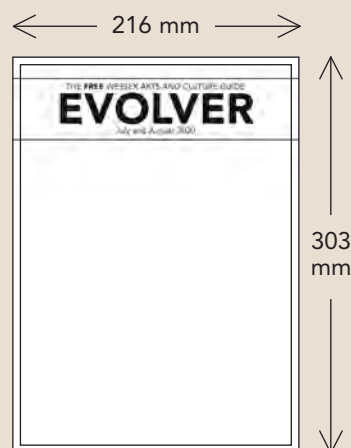
☐ I HAVE PAID OVER THE PHONE **01935 808441** AND MY REFERENCE NUMBER IS \_\_\_\_\_

We accept payments by credit / debit card over the phone, Monday - Thursday, 9am - 4pm

Send **ARTWORK + ENTRY FORM + SAE FOR RETURN OF ARTWORK** to: EVOLVER PRIZE 2020, EVOLVER MEDIA, 8 BUCKLAND ROAD, PEN MILL TRADING ESTATE, YEOVIL, SOMERSET BA21 5EA

**DEADLINE: THURSDAY 14 MAY 2020**

☐ Please tick box if you do not wish to be added to the Evolver and Ace Arts mailing lists



#### SUBMISSIONS

- The image size of all submitted work must measure 216 x 303 mm (the actual size of Evolver's front cover plus an extra 3 mm all round)
- The work should be an unframed original artwork or high quality print that can be sold at the exhibition
- Up to 3 works may be submitted
- A submission fee of £10 per work will be charged
- Please also supply a stamped addressed envelope for return of artwork

#### PLEASE NOTE

The judges will definitely not be looking for a particular style of work  
 The work submitted should be anything that you believe would make a great front cover





'On a Green Day She Wears Her Felt Dress' by Laura Hudson, oil on canvas, 2019, City and Guilds Art School

# MA & Other Postgraduates 2020

24 February - 21 March 2020

**Atkinson GALLERY**



**MILLFIELD**

Millfield, Street, Somerset BA16 0YD • Monday - Saturday 9.30am - 5pm  
[www.atkinsongallery.co.uk](http://www.atkinsongallery.co.uk) • Tel: 01458 444322 / 444176

