

[EVOLVER]





MILLFIELD

Summer Show

26 June – 4 August

Atkinson GALLERY

Millfield, Street, Somerset BA16
Monday - Saturday 9.30am - 5pm
www.atkinsongallery.co.uk
01458 444322 / 444176

'Volcano of Desire' by Gillian Hawkins

HESTERCOMBE GALLERY

Contemporary art in reclaimed spaces

18.03.17 - 02.07.17

REGIONS OF LIGHT

Rev. John Eagles
Rebecca Chesney

Paul Desborough
Jem Southam



ARTS COUNCIL
ENGLAND

hestercombe.com

Jem Southam, '21 March 2016' (detail) from the work 'a bend in the river', archival ink-jet print



EXHIBIT A

FARHAD BERAHMAN: UNCERTAIN NO. 2

PHOTOGRAPH

ARTIST'S STATEMENT: "Our world today is divided into various borders and boundaries; human beings have created them over the many centuries to hold a better control and restriction over the population. Without our own accord or personal choice, we are born in different parts of the world thus determining from the day of our birth till our death - our title, nationality and religion validated by a piece of paper. This series of portraits explores the predicament of Iranian exiles who have had to discard that piece of paper, stuck at a cross roads, belonging neither here nor there, uncertain of their past and their future."

FARHAD BERAHMAN: 'UNCERTAIN'

17 June - 1 July: Outpost, 77 Fortuneswell, PORTLAND, DT5 1LY. Tuesday - Saturday 12noon - 5pm. www.b-side.org.uk.

● Artists and photographers are invited to submit work for consideration as next issue's **EXHIBIT A** by emailing images to: simon@evolver.org.uk



Showcasing contemporary craft and art alongside an inspiring exhibition programme of work by local and national artists



Market Place, Somerton, Somerset TA11 7NB • 01458 273008 • www.acearts.co.uk

VISUAL ARTS

'PAINTED COLOUR'

Until 1 May

Bath Contemporary, 35 Gay Street, BATH, BA1 2NT. Monday - Saturday 10am - 5pm. 01225 461230 / www.bathcontemporary.com.

"Celebrating the structural diversity of colour and its varying potential for visual composition, we present three contrasting artists whose work indulges our sense of form, structure, materiality and movement: Alfred Stockham, Paul Wadsworth, and Iryna Yermolova."

LARKHALL OPEN STUDIOS

Until 1 May

Various venues in Larkhall, BATH, BA1. 11am - 5pm. www.larkhallopenstudios.co.uk. *"This annual open studios trail is part of the Larkhall Festival and has grown to attract visitors from across Wessex and beyond."*

LAURA JOLLIFFE: 'A SENSE OF PLACE'

Until 2 May

The Gallery, Shaftesbury Art Centre, Bell Street, SHAFTESBURY, SP7 8AR. 10am - 4pm. 01747 855243 / www.shaftesburyartcentre.org.uk.

MARGARET DEAN: 'LOOKING BACK'

Until 2 May

45 Preston Street, EXETER. 10am - 6.30pm. 01392 277767. *"A retrospective exhibition of paintings spanning five decades."*

PAUL WRIGHT: 'I GAVE THE POPE A RHINO'

Until 5 May

Edgar Modern, Bartlett Street, BATH, BA1 2EE. Tuesday - Saturday 10.30am - 4.30pm. 01225 443 746 / www.edgarmodern.com. *"New paintings."*

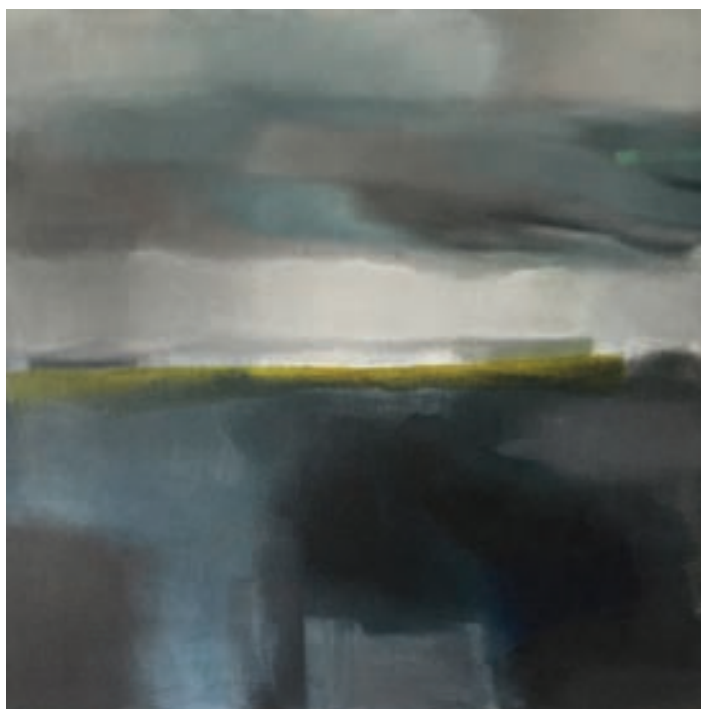


ELISABETH FRINK: 'TRANSFORMATION'

Until 7 May

Hauser & Wirth Somerset, Durslade Farm, Dropping Lane, BRUTON, BA10 0NL. Tuesday - Sunday 10am - 5pm. www.hauserwirthsomerset.com. *"A major solo exhibition of sculpture by the late Elisabeth Frink. The exhibition comprises a selection of Frink's distinctive bronzes produced in the 1950s and 1960s, alongside a series of drawings that highlight the artist's skill as a draughtsman. Outside in the grounds are some of Frink's most important sculptures from her later life, including the celebrated Riace Warriors."*

Above: 'Riace Warriors' (detail)



ANNE-LOUISE BELLIS 'RAIN SHADOWS' (Acrylic on canvas)

TIME & TIDE

"Time & Tide brings together painting, printmaking and jewellery by four artists from Dorset and Somerset, all influenced by the beautiful, vivid and varied local landscapes, seascapes and wildlife. This show is a celebration of living and creating in the country, set at a new rural arts venue, itself in the heart of the countryside."

13 - 21 May: The Old Cow Shed Studio, Manor Farm, GLANVILLES WOOTTON, Dorset, DT9 5PZ. Monday - Friday 10am - 3pm, Saturday and Sunday 9am - 5pm. 07970 797748 / www.theoldcowshedstudio.co.uk.

FROME ART SOCIETY

Until 7 May

The Long Gallery, Black Swan Arts, 2 Bridge Street, FROME, BA11 1BB. Monday - Saturday 10am - 4pm. 01373 473980.

CATHY JUDGE

Until 7 May

Homedene, High Street, CHEWTON MENDIP, Radstock, BA3 4LL. 10am - 6pm. 01761 241235. *"Large body of sculptures in a beautiful setting. Stylisation of the female form celebrating its tactile and curvaceous nature following its rhythms, patterns and lines."*

LIZBETH SPURGEON AND SUZANNE WOODWARD: 'REALITY RE-IMAGINED'

Until 7 May

Round Tower Gallery, Black Swan Arts, 2 Bridge Street, FROME, BA11 1BB. Monday - Saturday 10am - 4pm. 01373 473980.



'HISTORY THROUGH A LENS'

Until 10 May

Victoria Art Gallery, Bridge Street, BATH, BA2 4AT. 10.30am - 5pm. £4.

www.victoriagal.org.uk. *"Photographs that have changed public perception of world events."*

Above: Marc Riboud 'Demonstration against the Vietnam War, Washington DC, 1967'

TOM HICKMAN: 'FOLLOWING THE THREAD'

Until 10 May

Victoria Art Gallery, Bridge Street, BATH, BA2 4AT. 10.30am - 5pm. £4. www.victoriagal.org.uk.

'GLAZED SKY - TRACED EARTH'

Until 10 May

The Courtyard Gallery, The Town Mill, Mill Lane, LYME REGIS, DT7 3PU. 10.30am - 4.30pm.

www.townmillarts.co.uk. *"Painter Jools Woodhouse and potter Ali Herbert show off the styles, forms and influences that come from living near the sea."*

NANA SHIOMI: 'THIS SIDE AND THE OTHER SIDE'

Until 13 May

Rabley Drawing Centre, Rabley Barn, MARLBOROUGH, SN8 2LW. Thursday 10am - 5pm, Saturday 11am - 3pm. 01672 511999 / www.rableydrawingcentre.com. *"This exhibition marks the completion of Nana Shiomi's epic woodcut print series 'One Hundred Views of Mitate'."*

EMILY MYERS: 'MIRROR AND REFLECT'

Until 13 May

Rabley Drawing Centre, Rabley Barn, MARLBOROUGH, SN8 2LW. Thursday 10am - 5pm, Saturday 11am - 3pm. 01672 511999 / www.rableydrawingcentre.com. *"A collection of ceramic vessels in response to the work of Nana Shiomi. Emily Myers' forms and surface decoration mirror and reflect Shiomi's dualistic principals. Pairs of pots lean and invert as if in conversation. The surface of the clay is incised with converging lines, playing with perspective illusions and giving architectural poise to the pieces."*



TERRI HOGAN: 'WHERE SEA MEETS LAND'

Until 20 May

ACE Arts, Market Place, SOMERTON, TA11 7NB. Tuesday - Saturday 10am - 5pm. 01458 273008 / www.acearts.co.uk. *"Internationally-renowned artist Terri Hogan is a painter of landscape and seascape and the effects that the weather has upon them."*

Above: 'Down to the Sea - Lankidden' (Mixed media, 50 x 80 cm)

'A PHOTOGRAPHIC RECORD'

Until 20 May

Salisbury Arts Centre, Bedwin Street, SALISBURY, SP1 3UT. Tuesday - Saturday 10am - 3pm. 01722 321744 / www.salisburyartscentre.co.uk. *"A selection of photographs that Roger Elliott has taken during a working life spent dedicated to documenting Salisbury."*



Rick Kirby: Face to Face

2 - 24 June



bath contemporary

35 Gay Street, Bath BA1 2NT
t 01225 461230
www.bathcontemporary.com

VISUAL ARTS

'DEMENTIA DARNINGS'

Until 27 May

Bridport Arts Centre, South Street, BRIDPORT, DT6 3NR. Tuesday - Saturday 10am - 4pm. 01308 424204.



DAMIAN CLARKE: 'FREEFLOW'

Until 29 May

East Lambrook Manor Gallery, EAST LAMBROOK, South Petherton, TA13 5HH. 10am - 5pm (Closed 30 April, 8 + 15 + 22 May). 07773 128885 / www.damianclarkeart.co.uk. "New works exploring images that focus on murmuration, currents, disintegration."

'WINTER AND SPRING'

Until 31 May

Royal Albert Memorial Museum, Queen Street, EXETER, EX4 3RX. Tuesday - Sunday 10am - 5pm. 01392 265858. "Drawings, watercolours and oil paintings from RAMM's collection."

'WINTER AND SPRING'

Until 31 May

The Royal Albert Memorial Museum, Queen Street, EXETER, EX4 3RX. Tuesday - Sunday 10am - 5pm. 01392 265858 / www.exeter.gov.uk/RAMM. "A selection of drawings, watercolours and oil paintings from RAMM's collection."

SARA CLAY

Until 31 May

Abbey Muse Art Gallery, Abbey Mews Arcade, 56 - 58 High Street, GLASTONBURY. Monday - Saturday 11am - 4pm. 07919 427048. "Oils and watercolours of Glastonbury landscapes, mythological and historical concepts."

'CAPE FAREWELL'

Until 3 June

Allsop Gallery, Bridport Arts Centre, South Street, BRIDPORT, DT6 3NR. Tuesday - Saturday 10am - 4pm. www.bridport-arts.com. "Artists and farmers examine our relationship with food, farming and the wider environment."

ANNE DESMET: 'UNDER CHANGING SKIES'

Until 4 June

Wirth Gallery, The Holburne Museum, Great Pulteney Street, BATH, BA2 4DB. Monday - Saturday 10am - 5pm, Sunday and Bank Holidays 11am - 5pm. Free entry. www.holburne.org. "Distinguished wood engraver Anne Desmet presents a series of journeys through time. These recent prints and



ANN ARMITAGE 'LEMONS & NARCISSUS' (Oil on canvas, 92 x 122 cm)

ANN ARMITAGE AND ELSA TAYLOR

Still life and landscape by two distinguished artists, Ann Armitage and Elsa Taylor, will be on show in a two-man exhibition at The Jerram Gallery this May. Both artists show a different approach to the subject making for a colourful, rich and varied experience.

Ann Armitage moved from London down to Cornwall near Land's End 10 years ago and took up painting full-time. The visual and tactile act of painting is in direct response to her environment and she spends a lot of time simply arranging a still life. Lately, she has introduced more colour into her work and is now making more of an impression of the flower rather than being botanically correct. She never uses paint 'straight from the tube'. The paint is applied with palette knives and cloth in layers which is later scratched into to reveal glimpses of the under colour. As well as floral, her still life works include fruit, lemons and figs.

Elsa Taylor's studio is in an old smithy on the side of the Cotswolds. Elsa's landscapes are fairly abstract although retaining a figurative approach, working initially from nature the image evolves as she completes the painting in her studio. Colour is very important and she spends a long time mixing the palette so all the colours are in harmony. The image has to be something that moves her in the beginning, maybe how the light falls on a single flower or maybe a building, such as a barn, appears on the landscape, resulting in something a little more mysterious.

13 - 31 May: The Jerram Gallery, Half Moon Street, SHERBORNE, DT9 3LN. Monday - Saturday 9.30am - 5pm. www.jerramgallery.com.

mixed media collages will take you to New York, London and an imaginary beyond, exploring the tones and textures of changing seasons, times of day and layers of history. The exhibition will include the first showing of a new series of six engravings, Manhattan, based on the Chrysler Building in New York City."

BRUEGEL: 'DEFINING A DYNASTY'

Until 4 June

Roper Gallery, The Holburne Museum, Great Pulteney Street, BATH, BA2 4DB. Monday - Saturday 10am - 5pm, Sunday and Bank Holidays 11am - 5pm. £10 / £9. www.holburne.org.

JENNIFER MARTINDALE: 'PRAISE O' DO'SET'

Until 10 June

The Tea Room, Dorset County Museum, High West Street, DORCHESTER, DT1 1XA. Monday - Saturday 10am - 4.45pm. Free entry to Tea Room. www.dorsetcountymuseum.org. "Original hand painted woodblock prints."



Thelma Hulbert Gallery

Blooming Marvellous

A knitted garden growing at THG

6 May - 24 June 2017

Thelma Hulbert Gallery, Elmfield House, Dowell Street, Honiton, Devon, EX14 1LX
01404 45006 info@thelmahulbert.com www.thelmahulbert.com
Tues - Sat 10am - 5pm | Free Admission, Donations welcome












**sara dudman rwa
& jenny graham**
unfamiliar territories
06/05/17-29/05/17

Two artists exploring a small footprint
of the west somerset coastline.



matisse
drawing with scissors
31/05/17-25/06/17

A Hayward Touring exhibition from Southbank
Centre, London, featuring 35 lithographic
reproductions of Henri Matisse's famous cut-outs.

HAYWARD TOURING
**SOUTHBANK
CENTRE**

Henri Matisse, Nu bleu II (Blue Nude II), 1952
(Lithographic reproduction)
© Succession H. Matisse/DACS 2017

**open 11am-4pm wed-sun
& daily during holidays**

find us:
watchet, ta23 0aq
containsart.co.uk



Supported using public funding by
**ARTS COUNCIL
ENGLAND**

REFRACTED

COLLECTION HIGHLIGHTS
CO-CURATED WITH THE LOCAL LGBT+ COMMUNITY
13TH MAY – 8TH SEPTEMBER

Russell-Cotes
HOME • GALLERY • GARDEN
russellcotes.com | Tel: 01202 451858
West Cliff | Bournemouth | BH1 3AA
Registered Charity No. 306288

Funding raised by
The National Lottery
and awarded by the Heritage Lottery Fund

LOTTERY FUNDED

MIN FARRELL
TONY GIRARDOT
CAMERON SCOTT
MICHAEL TARR

THEN & NOW

ART EXHIBITION

JUNE 6th to JULY 1st

An exhibition of current work by
four ex art graduates of the '60's
at- CICCIC, Memorial Hall, Paul St, Taunton TA1 3PF
Tel 01823 337477
Preview Evening Weds 7th June 6pm-8pm

VISUAL ARTS



'THE POETRY OF PHILIP SUTTON'

Until 18 June

Sladers Yard, West Bay Road, WEST BAY, Bridport, DT6 4EL. Monday - Saturday 10am - 4pm. 01308 459511 / www.sladersyard.co.uk. "Paintings and works on paper, including new work."

SOMERSET PRINTMAKERS: 'PRINT PLUS'

Until 24 June

Trowbridge Town Hall, Market Street, TROWBRIDGE, BA14 8EQ. Monday - Friday 10am - 4pm, Saturday 10am - 2pm. 01225 774306 / www.trowbridgearts.co.uk.

ROSIE SMITH AND PENNY WITHERS

Until 1 July

Church House Designs, Congresbury, BRISTOL, BS49 5DG. Wednesday - Friday 10am - 5pm, Saturday 10am - 1pm. www.churchhousedesigns.co.uk. "Prints by Rosie Smith, and ceramics by Penny Withers. Church House Designs will be opening their garden as part of an NGS Open Gardens event on Sunday 11 June, 10.30am - 4.30pm."

'REGIONS OF LIGHT'

Until 2 July

Hestercombe Gallery, Hestercombe Gardens, CHIDDEN FITZPAINE, Taunton, TA2 8LG. 11am - 4pm. 01823 413923 / www.hestercombe.com. "Exhibition showcasing works from the artist and poet the Rev. John Eagles (1783 - 1855) together with contemporary artists Jem Southam, Rebecca Chesney and Paul Desborough. The title, taken from a line in a John Eagles poem, alludes to the visual diversity within the show, which features photography, paintings, sculpture, objects, words and film." See page 11.

EXETER ILLUSTRATORS: 'BE INSPIRED'

Until 2 July

The Royal Albert Memorial Museum, Queen Street, EXETER, EX4 3RX. Tuesday - Sunday 10am - 5pm. 01392 265858. "A range of artistic styles including artwork for children's books, observational drawings, wall murals, graphic novel illustration and character design."

'A FRAGILE BEAUTY: ART ON THE BLACKDOWN HILLS 1909 - 1925'

Until 8 July

Museum of Somerset, Taunton Castle, Castle Green, TAUNTON, TA1 4AA. Tuesday - Sunday 10am - 5pm. 01823 255088 / www.museumofsomerset.org.uk. "This exhibition captures the beauty of this Somerset and Devon borderland in a period when the First World War was changing English society forever."



'L'ESCARGOT (THE SNAIL)' (Gouache découpée, 286 x 287 cm, 1952 - 53)

MATISSE: DRAWING WITH SCISSORS

The French painter, sculptor and designer, Henri Matisse (1869 - 1954) was one of the 20th century's most influential artists. His vibrant works are celebrated for their extraordinary richness and luminosity of colour and his spectacular paper cut-outs were his final triumph. *Matisse: Drawing with Scissors*, a Hayward Touring exhibition from the Southbank Centre, features 35 posthumous prints of the famous cut-outs that he produced in the last four years of his life, when confined to his bed. It includes many of his iconic images, such as *The Snail* and the *Blue Nudes*.

Matisse continued creating highly original works into his eighties. For his cut-outs he used paper hand-painted with gouache, which he carved into with scissors. The colours he used were so strong that he was advised by his doctor to wear dark glasses.

The lithographic reproductions in this exhibition are taken from a special double issue of *Verve*, a review of art and literature, published by Matisse's friend, the critic and fine art publisher *Tériade*, in 1958, four years after Matisse's death. The publication was planned during Matisse's lifetime and the first lithographic plates were prepared under his direction a few days before he died.

Matisse began his working life as a lawyer, before going to Paris to study art in 1890. At first strongly influenced by the Impressionists, he soon created his own style, using brilliant, pure colours, and started making sculptures as well as paintings. In 1905 he and his colleagues were branded the *Fauves* (wild beasts) because of their unconventional use of colour.

31 May - 25 June: Contains Art, East Quay, WATCHET, TA23 0AQ. Wednesday - Sunday 11am - 4pm. 07583 368072 / www.containsart.co.uk.

SUMMER EXHIBITION

Until 11 July

John Leach Gallery, Muchelney Pottery, MUCHELNEY, near Langport, TA10 0DW. Monday - Saturday 9am - 1pm and 2 - 5pm. 01458 250324 / www.johnleachpottery.co.uk. "A lively summer exhibition featuring glass by Sally Kent, prints by Jean Stevens, jewellery by Holly Webb, and signed ceramics by John Leach, Nick Rees and Mark Melbourne."

'FIND ANOTHER BATH'

Until 12 July

Central Gallery, Royal United Hospitals, Combe Park, BATH, BA1 3NG. Monday - Sunday 8am - 8pm. 01225 824987 / www.artatruh.org. "This exciting and diverse collection of works celebrates some of Bath's industrial history and honours the labour force that enabled this industry, highlighting the conditions they lived and worked in and contrasting it with the sectors of the city where there was freedom of choice and money to spend."

'GREENFYLDE ART ALIVE'

2 - 13 May

Ilminster Arts Centre, The Meeting House, East Street, ILMINSTER, TA19 0AN. Monday - Friday 9.30am - 4.30pm, Saturday 9.30am - 2.30pm. 01460 55783 / www.themeetinghouse.org.uk. "Young artists aged 2 - 9 showcase their latest work."

ANDREW WASHINGTON

3 - 9 May

The Gallery, Shaftesbury Art Centre, Bell Street, SHAFTESBURY, SP7 8AR. 10am - 4pm. 01747 855243. *Photographs*.



PANAYIOTIS MARLAGOUTSOS

4 - 23 May

LT Gallery, 1 Orchard Street, WESTON-SUPER-MARE, BS23 1RG. Tuesday, Friday and Saturday 10am - 4pm, Thursday 12noon - 7pm. 07730 431726 / www.ltgallery.com. *Paintings*.

'CONSERVING A MOMENT IN TIME'

5 - 17 May

Hengistbury Head Visitor's Centre, BOURNEMOUTH, BH6 4EN. 10am - 5pm. 01202 451618 / www.artbydanielgrant.com. "Daniel Grant will be exhibiting 2D and 3D work inspired by the experience of working on site at Hengistbury Head."



sheila mannes-abbott a botanical life 28/06/17-9/07/17

An exhibition of the life and work of celebrated botanical artist, Sheila Mannes-Abbott.

**open 11am-4pm wed-sun
& daily during holidays**

find us:
watchet, ta23 0aq
containsart.co.uk



Supported using public funding by
**ARTS COUNCIL
ENGLAND**



VISUAL ARTS



IAN FRASER (1933 - 1986)

5 - 29 May

Bath Contemporary, 35 Gay Street, BATH, BA1 2NT. Monday - Saturday 10am - 5pm. 01225 461230 / www.bathcontemporary.com.

"Through pattern and structure, Fraser sought tranquility within a world of hectic modernisation. His prolific practice was woven intellectually with ecological concern, and is politically charged now more than ever."

Above: 'Nemesis' (Oil on canvas, 153 x 122 cm)



LYNNE CARTLIDGE AND ANDY WAITE

5 - 29 May

David Simon Contemporary, 4 Bartlett Street, BATH, BA1 2QZ. Monday - Saturday 10am - 6pm. 01225 460189. "Still-lives capturing spring light by Lynne Cartlidge and semi-figurative landscapes by Andy Waite."

Above: Lynne Cartlidge 'Witch Hazel, Lime and Willow Vase' (Oil on linen, 55 x 65 cm)

JEREMY HOUGHTON

5 May - 2 June

Hatch Gallery, 7a Church Street, CHRISTCHURCH, BH23 1BW. 07787 517958 / www.hatchgallery.co.uk.

SOUTH WEST ILLUSTRATORS: 'SW3'

5 May - 12 July

Central Gallery, Royal United Hospitals, Combe Park, BATH, BA1 3NG. Monday - Sunday 8am - 8pm. 01225 824987 / www.artatruh.org. "South West Illustrators is a group of illustration artists based in the South West."



DAN PARRY-JONES 'GIRL BY A STRIPY WALL' (Gala Fine Art)

FRESH: ART FAIR

Art lovers will be invited to see art in a different way with the launch of the UK's first major contemporary art fair in the Heart of England. *Fresh: Art Fair*, which launches its first show at Cheltenham Racecourse, is a new national art fair on a mission to make quality art more accessible to the regions, filling a gap currently under-served by other art fairs.

Co-founded by Anthony Wardle, a former chairman of Saatchi & Saatchi subsidiaries, *Fresh*: will launch with 45 of the UK's best contemporary galleries, many of which are rarely seen on the UK art fair circuit. With some 5000 paintings and sculptures from over 400 established and emerging artists there will be something to suit art lovers of all tastes and budgets from established and aspiring collectors to complete newcomers to the world of art.

On show will be work from internationally acclaimed and collected artists, Royal Academicians and Royal West of England Academicians, and Members and Fellows of The ROI, RSW, RBSA and RSA. They include Barbara Rae, Mary Fedden, Bridget Riley, Sir Peter Blake, Peter Wileman, Sophie Ryder, Edward Noot and Alan Halliday. Among them will be many rising stars and fresh new faces including Ukrainian-born oil painter Iryna Yermalova, French sculptor Lou-Brice Léonard, English wildlife sculptor Adam Binder and Spanish-born still-life artist Raquel Alvarez.

For the first time in the art fair world, *Fresh*: visitors will not only be able to buy art, but also bring some of their old paintings that they might wish to sell. Experts from Fine Art Auctioneers Bonhams will be on-site to provide free valuations. With some of the excitement of The Antiques Road Show, visitors to *Fresh*: may find they have a treasure in the attic.

12 - 14 May: Cheltenham Racecourse, CHELTENHAM, GL50 4SH. www.freshartfair.net.

LANDSCAPE COLLECTIVE UK

5 May - 12 July

Central Gallery, Royal United Hospitals, Combe Park, BATH, BA1 3NG. Monday - Sunday 8am - 8pm. 01225 824987 / www.artatruh.org. Photography.

'VULPES VULPES'

6 May

Galleries, The Edge, University of Bath, Claverton Down, BATH, BA2 7AY. 11am - 4pm. 01225 386777 / www.edgearts.org. "A gallery display and drop-in workshop, showcasing findings from a recent Edge Arts residency during which the artist collective and local community members deepened their knowledge of the topography and psychogeography of the land that makes up the University campus and surrounding Bath Skyline - in a bid to map social history and shared community future."

SOUTHBOURNE OPEN STUDIOS WEEKEND

6 and 7 May

Various locations in SOUTHBOURNE, Bourmemouth, BH5 2BA. Saturday 11am - 6pm, Sunday 12noon - 6pm. 07976 311448 / www.inekevanderwal.com. "The artists' work is multifarious and reflects a wide collective experience of exhibiting, performance, curating."

'ART4U'

6 - 14 May

First View Gallery, STOURHEAD, BA12 6QE. 10am - 5pm. 01258 821089. "10 artists present an eclectic mix of exciting images."



RICHARD POMEROY: 'LET ME LEAD YOU BY THE HAND'

6 - 27 May

Bruton Art Factory, 7 Old Mill Industrial Estate, BRUTON, BA10 0EH. Tuesday - Saturday 12noon - 5pm. www.bruntonartfactory.co.uk. "Richard Pomeroy's work is predominantly about the relationship between mankind and nature and through foraging, video, body printing, performance, drawing, painting and ceramics he explores habitat and the natural world with an intimate hands on approach. Much of the work begins in the open air in the landscape and is developed in the studio into large paintings that invite you into their worlds."

SARA DUDMAN AND JENNY GRAHAM

6 - 29 May

Contains Art, East Quay, WATCHET, TA23 0AQ. Wednesday - Sunday 11am - 4pm. 07799 260854. "Sara and Jenny record the creative journey exploring a small footprint of the West Somerset coastline and its legacy."

THE CREATIVE GALLERY

Showcasing ceramics, paintings, photography, jewellery and glass by local artists

"Plants Up Close"
Gill Jelley
1st-31st May

"Artistry in Iron"
Lucille Scott
1st June-2nd July

St John's Hill, Wareham, Dorset BH20 4NB t 01929 551700 e fiona@creativegallerywareham.co.uk
Open: Monday-Saturday 10-5 & Sundays from 28th May. Purbeck Art Weeks 27th May-11th June

Working from Memory

A site specific installation
by Martin Cody



Saturday 29th April - Saturday 13th May

www.martincodysculpture.com



HERITAGE COURTYARD STUDIOS
6 HERITAGE COURTYARD, SADLER STREET
WELLS, SOMERSET BA5 2RR
Open Daily 10am – 4pm (Closed Sundays)
For more information contact
Heather Wallace on 07974 255016
www.heritagecourtyardstudio.com

EXETER SCHOOL of ART

SUMMER
SHOWS 2017



Painting by Ben Sargent - Foundation Diploma Fine Art

Foundation Degrees

Saturday 13th May - Saturday 20th May
(excluding Sunday 14th May)

UAL Foundation Diploma

Monday 5th June - Wednesday 14th June
(closed weekends)

Open 10.00 - 18.00 CCI Building,
Exeter College, Queen Street, Exeter EX4 3SR

www.ExeterSchoolofArt.co.uk



THE EDGE EXHIBITION

How is knowledge
distributed in society?

May & June 2017



Artists include

Will Shannon
Gayle Chong Kwan

art installations · chair making · pottery workshops
traditional community activities · talks

check website for timings
www.edgearts.org



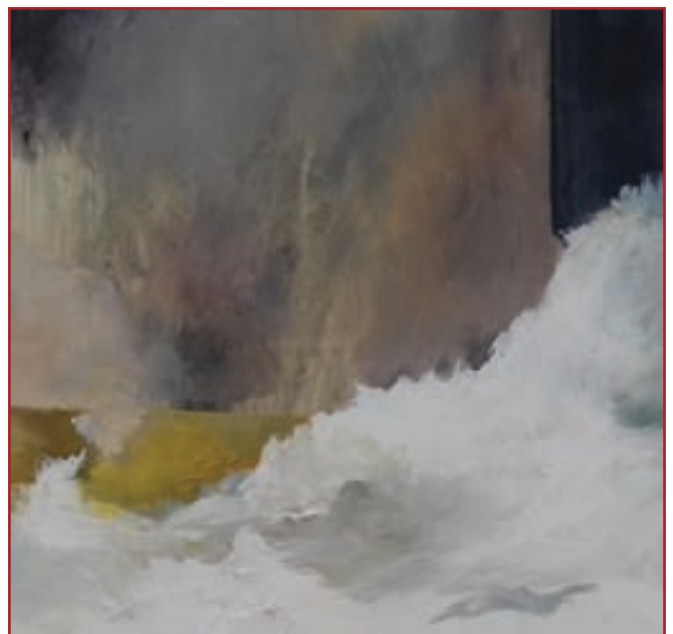
Tincleton Gallery

contemporary fine art in Dorset

Summer show

Mixed gallery artists

Fri 19th May – Sun 16th July



Detail from "Level 2 By The Sea", acrylic, Kim Pragnell

The Old School House, Tincleton, near Dorchester, DT2 8QR
Friday / Saturday / Sunday / Monday • 10am – 5pm
01305 848 909 • www.tincletongallery.com

VISUAL ARTS



Textile Textures
29th April - 4th June 2017

A vibrant exhibition giving textiles a voice refining surface textures and colour.

Stone Lane, Wimborne, Dorset BH21 1NL
www.walfordmillcrafts.co.uk 01202 841400

walfordmill
crafts

ARTS COUNCIL
ENGLAND



MARTIN CODY: WORKING FROM MEMORY

"Sculptor Martin Cody has created a site specific work to fill the Heritage Courtyard Studios and Gallery in Wells. The title *'Working From Memory'* summarises the process of making and thinking over a set time period. This remarkable work of art proposes a direct relationship between the viewer and the work. The viewer 'here and now' is constant as a feature of the work, which makes it such an accessible and memorable creation."

Until 13 May: Heritage Courtyard Studios and Gallery, 6 Heritage Courtyard, Sadler Street, WELLS, BA5 2 RR. Tuesday - Saturday 10am - 4pm. 07974 255016 / www.heritagecourtyardstudio.com.

FREEFLOW

East Lambrook Manor Gallery
April 29 - May 29 2017
See website for opening times and days. Free entry.
Occasional soundscape music played live on the Dulcimer

Meet the Artist -
Saturday May 6th
2pm. Free entry to gallery

damianclarke.co.uk

BULL MILL STUDIO

Nick Andrew

Tanya Hinton

WYLYE VALLEY ART TRAIL
27 May - 4 June . Venue 28e

ART
wvat.co.uk

BULL MILL, CROCKERTON, WARMINSTER. BA12 8AY
www.nickandrew.co.uk www.tanyahinton.jimdo.com

'DIVERSE FORMS'

6 May - 3 June

The Red House, Quay Road, CHRISTCHURCH, BH23 1BU. Tuesday - Friday 10am - 4pm, Saturday 10am - 5pm. 01202 885870 / www.bournemouthartsclub.co.uk. "Annual exhibition by Bournemouth Arts Club showing new 2D and 3D contemporary art."

'BLOOMING MARVELOUS'

6 May - 24 June

Thelma Hulbert Gallery, Dowell Street, HONITON, EX14 1LX. Tuesday - Saturday 10am - 5pm. 01404 45006. "A knitted and crocheted 3D garden exhibition created by 5,000 volunteers comes to THG as part of a national tour."

ROBERT ORGAN

7 - 21 May

The Malthouse Gallery, The Town Mill, Mill Lane, LYME REGIS, DT7 3PU. 10.30am - 4.30pm. www.townmillarts.co.uk. "An exhibition of work by acclaimed painter Robert Organ. His love of nature is superbly rendered in paintings of golden carp, verdant gardens and the French landscape."

SIR DAVID MUIRHEAD BONE (1876 - 1953)

8 May - 19 November

The Royal Albert Memorial Museum, Queen Street, EXETER, EX4 3RX. Tuesday - Sunday 10am - 5pm. 01392 265858. "A small display of works depicting evocative scenes from the First World War."

'IMAGES OF RESEARCH'

9 - 20 May

The Edge, University of Bath, Claverton Down, BATH, BA2 7AY. Tuesday - Thursday 11am - 8pm, Friday and Saturday 11am - 5pm. 01225 386777. "See this year's entries to the annual University of Bath's competition in which the research community is invited to visualise their work via collaboration with artists."

'SURFACES'

10 - 23 May

The Gallery, Shaftesbury Art Centre, Bell Street, SHAFTESBURY, SP7 8AR. 10am - 4pm. 01747 855243. "An investigation into textures, landscapes and found objects through paintings, photographs and felt hangings. Work by Eric Bailey, Tim and Mandy Edwards."

dansel

Contemporary Interiors in Wood

Britain's largest selection of work in wood

5 rooms full of wood work from over 200 craftsmen working in the UK

Ranging from kitchenware to one-off jewellery boxes and furniture

Coffee shop and small children's play area

Rodden Row, Abbotsbury, DT3 4JL
www.danselgallery.co.uk

01305 871515
Open 10am - 5.30pm every day

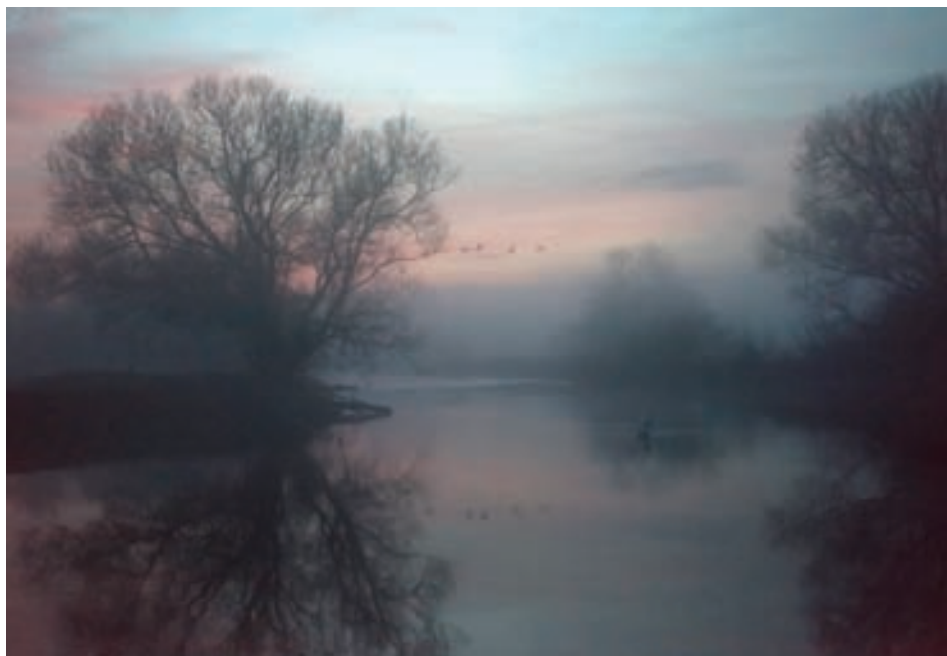
VISUAL ARTS

Jem Southam is a photographer, traditional in approach and in his use of equipment, until recently. For forty years he has been lugging a large format camera and a heavy tripod across the fields in search of a subject. Once identified, he has returned repeatedly to the same spot, photographing it in different lights at different times of day and in different environmental conditions. Southam is a storyteller, weaving together a complex narrative of human intervention, the response of the landscape and his own interpretation of the changes he observes.

He photographs the same place over a number of years. Winter light, winter trees are his preference and he frequently returned after sitting for an hour or more with just one photograph. He waits for the optimum conditions, "atmosphere, light and colour range have to be right, otherwise there is no point". Up until four years ago, Southam had resisted the digital revolution. However he has increasingly been frustrated by the deterioration in quality of the available film stock and analogue printing papers. So he reluctantly started to explore the possibilities of digital cameras and the software that goes with them. It has not been an easy task but in the last year the new techniques have led to some very exciting work. Freed, literally from the weight of his heavy cameras, he has now wholeheartedly embraced the possibilities of digital technology, finding it 'enormously liberating' that he can now take as many pictures as he likes, 'probably too many'. He is "led by doing", preferring to use the word 'doing' rather than 'process'.

He is currently showing three small photographs using these new techniques in the *Regions of Light* exhibition at Hestercombe Gardens near Taunton, which continues until 2 July 2017. It is the first time that he has shown his digital work and it is radically different to anything that he has done in the past.

Taking photographs with a large format camera mounted on a tripod facilitates the use of a very small aperture and long exposures of a minute or longer. These techniques and the resulting eight by ten inch negatives lead to images which have unparalleled detail because of the huge depth of field. In the *Bend in the river* series,



'A BEND IN THE RIVER' 5 DECEMBER 2016 (Archival ink-jet print)

JEM SOUTHAM

the crisp sharpness where every twig and branch is seen clearly into the distance is replaced by a painterly, atmospheric mistiness. Pushing the technology to its limit Southam relies on sound rather than sight to move his camera into position and shoot into the darkness. Later he reinstitutes the detail in Photoshop or Lightroom.

Photographed very early, pre-dawn or at dusk in the darkest hours of December just before the shortest day of the year, these works are more than evocations of

winter. They are deeply personal. They exude sadness, the sense of an ending. Taken on the cusp of the end of light they become a metaphor for change. Much of Southam's work has been about seasons, about decay and renewal but in these images the rotting vegetation, the detritus and debris left by humans has gone. These photographs of still water focus on the swans, the sound of the wing beat, the flight, the movement from land to water at the end of the day and the grooming drinking feeding that is part of these creature's daily routine.

Southam's working practice, spending long hours waiting and watching for the right moment, is very contemplative. It allows his thoughts to wander and to consider other interpretations of the scenes before him. For him the swans at the bend in the river are part of that continuum from Leda and Zeus, to the Finnish epic poem Kalevala and Sibelius's music in response to it, through to myths from other cultures. The change in emphasis and equipment has opened up fascinating new possibilities.

Fiona Robinson

Portrait photograph by Andrew Nadolski

'REGIONS OF LIGHT'

Until 2 July: Hestercombe Gallery, Hestercombe Gardens, CHIDDEN FITZPAINE, Taunton, TA2 8LG. 11am - 4pm. 01823 413923 / www.hestercombe.com.



DAVID HARRISON: REMAKE REMODEL

Exhibition of Original Artwork

Opening Saturday 3rd June - 3rd July

Monday to Saturday 10:30am - 5:30pm
See www.churchgategallery.co.uk for further details

CHURCHGATE GALLERY HIGH STREET PORLOCK TA24 8PT
WWW.CHURCHGATEGALLERY.CO.UK





VISUAL ARTS

'MADE IN SOMERSET'

11 May
The White Hart Inn, SOMERTON, TA11 7LX.
10am - 3pm. Free entry. "Contemporary crafts and gifts, local food and produce."

MILLFEST OPEN

11 - 24 May
The Courtyard Gallery, The Town Mill, Mill Lane, LYME REGIS, DT7 3PU. 10.30am - 4.30pm.
www.townmillarts.co.uk. "Paintings and photographs that celebrate the Town Mill."



'SOMETHING FOR THE WEEKEND?'

12 - 14 May
The Old Parsonage, Parsonage Hill, SOMERTON, TA11 7PF. 10am - 6pm. 01984 629180 / www.oliviasanders-sculpture.com / www.louisevaugh.com. "Paintings, prints, sculptures and drawings by Olivia Sanders and Louise Vaughn."

ARTISTS 303: 'SPRING EXHIBITION'

12 - 27 May
Round Tower Gallery, Black Swan Arts, 2 Bridge Street, FROME, BA11 1BB. Monday - Saturday 10am - 4pm. 01373 473980.

'EXETER SCHOOL OF ART SUMMER SHOW: FOUNDATION DEGREE'

13 - 20 May
CCI Building, Exeter College, Queen Street, EXETER, EX4 3SR. 10am - 6pm (Closed 14 May). www.ExeterSchoolofArt.co.uk. "Work by our Fine Art, Graphic Communication and Photography Foundation Degree students."

'REFRACTED: COLLECTION HIGHLIGHTS'

13 May - 8 September
Russell-Cotes Museum & Gallery, East Cliff Promenade, BOURNEMOUTH, BH1 3AA. Tuesday - Sunday 10am - 5pm. £6 / £4. 01202 451858 / www.russellcotes.com. "A stunning new exhibition to mark the 50th anniversary of the decriminalisation of homosexuality, co-curated with the local LGBT+ community."

'SEA LIFE: GLIMPSES OF THE WONDERFUL'

13 May - 17 September
The Royal Albert Memorial Museum, Queen Street, EXETER, EX4 3RX. Tuesday - Sunday 10am - 5pm. 01392 265858 / www.exeter.gov.uk/RAMM. "Through a playful mix of historic objects, film, illustrations, live creatures and contemporary craft, the exhibition combines science and art to inspire a greater appreciation of Devon's glorious coastline."



DAVID HARRISON: REMAKE REMODEL

"David Harrison's paintings, drawings and sculptures draw on a rich vocabulary of myth, history and symbol to present an acutely observed, emphatically contemporary world where the natural and supernatural go hand in hand. For his forthcoming solo exhibition at Churchgate Gallery, the artist will show wall-based works alongside previously unseen sculptures. Shaped from cheap, prosaic and recycled materials such as cardboard offcuts, Harrison's sculptures present us with representatives of the animal kingdom, such as a flock of birds, along with symbolic figures from the past, from myth, or from fiction. Embodying our throw-away society and its effects upon our wider environment, these sculptures make explicit the paramount importance of nature to the artist. His dexterity with such materials, meanwhile, allows each object, despite its humble origins, to possess an alarming, talismanic potency, and an iconic simplicity."

3 June - 1 July: Churchgate Gallery, High Street, PORLOCK, TA24 8TP. Monday - Saturday 10.30am - 5.30pm. www.churchgategallery.co.uk.



ANTHONY CARO: 'CONCERTO SERIES'

13 May - 15 October
Poole Museum, 4 High Street, POOLE, BH15 1BW. 10am - 5pm. 01202 262605 / www.poolemuseum.co.uk. "Exhibition celebrating the completed conservation of the Sea Music sculpture by Caro on Poole Quay."

DAVID WARD: '100 VIEWS OF SEA MUSIC'

13 May - 15 October
Poole Museum, 4 High Street, POOLE, BH15 1BW. 10am - 5pm. 01202 262605 / www.poolemuseum.co.uk. See left.

'ACROSS THE BORDERS'

15 May - 3 June
Ilminster Arts Centre, East Street, ILMINSTER, TA19 0AN. Monday - Friday 9.30am - 4.30pm, Saturday 9.30am - 2.30pm. 01460 55783. "The East Dorset Potters join forces with Somerset painters and printmakers."

'SPRING INTO SUMMER'

19 May - 1 June
The Hayloft Gallery, 14 Wick Lane, CHRISTCHURCH, BH23 1HX. 10am - 4pm. 07983 839970. "Mixed media exhibition featuring work by Deb Edlund, Myra Ann, Helen Drinkwater, and Vivien Graham."

SUMMER SHOW

19 May - 16 July
Tincleton Gallery, The Old School House, TINCLETON, near Dorchester, DT2 8QR. Friday - Monday 10am - 5pm. 01305 848909. "Art show of mixed gallery artists including Kim Pragnell, Paul Sainsbury and others."

MARY QUINTON EDWARDS AND MAGGIE WYMAN

20 May - 4 June
Upstairs Gallery, Poundbury Garden Centre, DORCHESTER, DT1 3RT. 10am - 4pm. 07931 210175. "Vibrant and contemporary images."

BRENDAN BUESNEL: 'BRUTAL SOLITUDE'

20 May - 10 June
Outpost, 77 Fortuneswell, PORTLAND, DT5 1LY. Tuesday - Saturday 12noon - 5pm. www.b-side.org.uk. "A visual observation of the stark yet meditative landscape, seascape and architecture of Portland, Dorset."

'SKETCH 2017'

20 May - 17 June
Rabley Drawing Centre, Rabley Barn, MARLBOROUGH, SN8 2LW. Sunday 21 and Monday 22 May 11am - 5pm, Thursday - Saturday 11am - 5pm. 01672 511999. "100 artists' sketchbooks selected for the 2017 Sketch Open, promoting the diversity and importance of drawing and the role of the sketchbook in contemporary creative practice."

JACKIE BERRIDGE

20 May - 17 June
Rabley Drawing Centre, Rabley Barn, MARLBOROUGH, SN8 2LW. Sunday 21 and Monday 22 May 11am - 5pm, Thursday - Saturday 11am - 5pm. 01672 511999. "Jackie creates a floating community of connected but socially disconnected individuals."



BATH SOCIETY OF ARTISTS ANNUAL OPEN EXHIBITION

20 May - 15 July
Victoria Art Gallery, Bridge Street, BATH, BA2 4AT. 10.30am - 5pm. £4. 01225 477733 / www.victoriagal.org.uk. "The best of the region's artistic talent."

Above: Tim Carroll 'Caryatids' (2016)

The Old
BRICK WORKSHOP
Space for Creative Industries

STUDIOS AND GALLERY

Studios

- Nine artists' studios available to rent
- Communal kitchen, meeting room and wifi

Gallery

- Regular exhibitions in our contemporary art gallery
- Also available for hire

Community Space

- Various workshops and classes run throughout the year
- Room also available to hire

THE OLD BRICK WORKSHOP

Higher Poole, Wellington, Somerset TA21 9HW

www.theoldbrickworkshop.com

alison@theoldbrickworkshop.com • 07989 465427



HIGH ADVENTURE

Exhibition of New Work from
South America and Scotland by
MOISH SOKAL



Mother and Child / Peru

Watercolour 16" x 20"

The Malthouse Gallery

East Lambrook Manor Gardens, Somerset, TA13 5HH
6th June – 23rd July • 10am – 5pm • Tuesday to Sunday
Mob 07812 837825 • www.moishsokal.co.uk

ANN ARMITAGE • ELSA TAYLOR

13th – 31st May



ELSA TAYLOR

ESTUARY

OIL

Next Exhibition KATHERINE SWINFEN EADY 10th – 28th June

www.jerramgallery.com

THE JERRAM GALLERY
Half Moon Street, Sherborne,
Dorset DT9 3LN

01935 815261
info@jerramgallery.com
Monday - Saturday

Come to the Fair

FRESH:

CONTEMPORARY
ART FAIR
CHELTENHAM RACECOURSE
12-14 MAY 2017



Steven Lindsay: Lime Tree Gallery, Bristol

45 leading Galleries
10 minutes off M5
Free Parking

Visit: freshartfair.net



[EVOLVER]

1 1 5 12
12 :

10 190

A major new collection of rare archive films charting the history of the UK's railways and bringing home the romance and heady freedoms offered by train travel.

(1 5

10 190

Rosamund Pike and David Oyelowo bring great chemistry to this inspiring and richly crafted story of a love that transcends boundaries.

) 55 21

2 90

1

An intimate and deeply affecting coming of age story set against the backdrop of a deprived Miami neighbourhood.

7 1
9 3 9 1 1 7 4



Prints by **Rosie Smith** and ceramics by **Penny Withers**
Until 1st July

Wed - Fri 10am - 5pm, Sat 10am - 1pm

Church House Designs will be opening their garden as part of an NGS Open Gardens event on Sunday 11th June 10.30am - 4.30pm

CHURCH HOUSE DESIGNS

Congresbury, Bristol BS49 5DG
www.churchhousedesigns.co.uk

FREE EVOLVER LISTINGS

Exhibition and performance information should be emailed to: listings@evolver.org.uk

Please supply (in upper and lower case) in the following order:

Event

Date(s)

Venue, address (including postcode). Times. Admission fee. Contact number / website. Up to 30 words about the event.

wylfe valley
ART trail 2017

Saturday 27 May
- Sunday 4 June

78 Venues/350+ Artists in South & West Wiltshire

PAINTING | CERAMICS | TEXTILES | SCULPTURE | PRINTMAKING | CILINDING | DIGITAL ART
JEWELLERY | RESTORATION | PHOTOGRAPHY | WOOD | ILLUSTRATION | FURNITURE
METALWORK | GLASS | VIDEO | DRAWING | INSTALLATION | MIXED MEDIA

FREE TRAIL BROCHURE
Available from April at Tourist Information Centres,
Libraries, Arts Centres and lots of other places
look for the  trailmarker signs.

 **wvat.co.uk**

JOHN LEACH GALLERY



SUMMER EXHIBITION

Jean Stevens : *prints*
Sally Kent : *glass*
Holly Webb : *jewellery*

27 April - 11 July 2017

Muchelney Pottery
Muchelney, Nr Langport TA10 0DW

www.johnleachpottery.co.uk

VISUAL ARTS

TIM WARREN

25 May - 13 June

LT Gallery, 1 Orchard Street, WESTON-SUPER-MARE, BS23 1RG. Tuesday, Friday and Saturday 10am - 4pm, Thursday 12noon - 7pm. 07730 431726 / www.ltgallery.com. *Paintings.*

'PORTRAIT OF SHAFTESBURY'

26 May - 6 June

The Gallery, Shaftesbury Art Centre, Bell Street, SHAFTESBURY, SP7 8AR. 10am - 4pm. 01747 855243.

LIZ SHEWAN: 'DIVINE ESSENCE'

26 May - 7 June

The Courtyard Gallery, The Town Mill, Mill Lane, LYME REGIS, DT7 3PU. 10.30am - 4.30pm. www.townmillarts.co.uk.

CHINKS GRYLLS: 'GLASSWORKS'

27 - 29 May

Quantock Lodge, ALEY, Over Stowey, TA5 1HE. 10am - 6pm. 07803 703634. "A variety of glassworks."

'HERE'

27 - 31 May

Centrespace Gallery, 6 Leonard Lane, BRISTOL, BS1 1EA. 11 - 6pm. 01179 291234.

MAY EXHIBITION

27 May - 4 June

East Devon Art Academy, Old Fore Street, SIDMOUTH, EX10 8LS. 11am - 5pm. 01395 516284. "A wide variety of artworks from abstract to figurative."

LYME REGIS ART SOCIETY

27 May - 7 June

The Malthouse Gallery, The Town Mill, Mill Lane, LYME REGIS, DT7 3PU. 10.30am - 4.30pm. www.townmillarts.co.uk. "Annual show."



'ALTERNATIVE REALITIES'

27 May - 11 June

Garden Flat Gallery, 48 Great Pulteney Street, BATH, BA2 4DP. 12noon - 4pm. 07983 465789 / www.kitglaisyer.com. "Painting, sculpture, installation and video art evoke utopian or mystical visions of subjective alternative realities. Artists include Kit Glaisyer, Ellie Preston (above), Jon Adam, Paul Newman, Kate Genevieve, and Dan Bendel."



'FARMHOUSE AND TERRACES, ITALY' (Oil on linen, 30" x 30")

KATHERINE SWINFEN EADY

"Katherine has steadily built an impressive track record becoming a very sought after Scottish colourist artist with the UK's art scene. This year's selection of work centres around Salisbury Plain, the Ardnamurchan Peninsular on the West Coast of Scotland, France and Italy. Katherine's work is in the tradition of Scottish oil painting having been trained at Edinburgh College of Art and her use of colour and form stems from that training. She reaps huge inspiration from living on Salisbury Plain and many of her landscapes show the wonderful lights and lines which are due to the area being one of the 'clear sky areas' in the country. Her paintings of Salisbury Plain are all executed 'en plein air'; it is an area she never tires of and she finds the huge skies, changing light and the expanse of wildlife a never-ending source of subject matter for her paintings. Ardnamurchan Peninsular, the most westerly point of mainland Britain, is much more susceptible to inclement weather, hence Katherine makes lots of sketches on the spot and then works on the paintings when she is back in the studio. As a complete contrast France and Italy offers a completely different type of landscape and working out the hot colours and how it affects the landscape is a challenge she enjoys."

10 - 28 June: The Jerram Gallery, Half Moon Street, SHERBORNE, DT9 3LN. Monday - Saturday 9.30am - 5pm. 01935 815261 / www.jerramgallery.com.

STEPHEN STOKES: 'BEAUTY - PERFECTION'

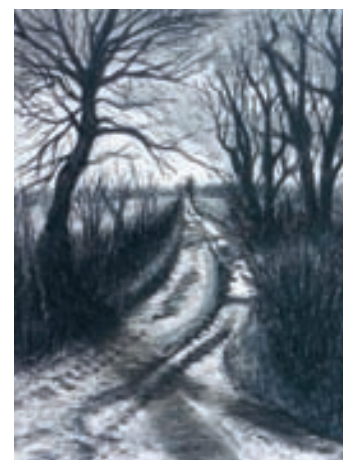
27 May - 24 June

ACE Arts, Market Place, SOMERTON, TA11 7NB. Tuesday - Saturday 10am - 5pm. 01458 273008 / www.acearts.co.uk. "Sculpture of complex and intricate forms in wood, exploring the unique attributes of trees in the local landscape."

ALDERHOLT ART CLUB

29 May - 3 June

Fordingbridge Town Hall, 63 High Street, FORDINGBRIDGE, SP6 1AS. 9am - 5pm. 07799 528148 / 01425 650458. "A varied and colourful display of our work over the last year in a variety of media and over a range of subjects."



TINA DODD AND LINDY PAUL

1 - 22 June

Weston Old Town Quarry, South Road, WESTON-SUPER-MARE, BS23 2LU. Wednesday - Sunday 10.30am - 4.30pm. 01934 843660 / www.tinadoddart.com. "Striking monochromatic landscapes alongside paintings commenting on isolation and disconnection."

Above: 'Mendip Lane'

SANDRA BRANT: 'SEA DREAMS'

1 - 30 June

Abbey Muse Art Gallery, Abbey Mews Arcade, 56 - 58 High Street, GLASTONBURY. Monday - Saturday 11am - 4pm. 07919 427048. "Acrylic, watercolour and mixed media work, exploring the elements of sun, sea, sky and sand."



RICK KIRBY

2 - 24 June

Bath Contemporary, 35 Gay Street, BATH, BA1 2NT. Monday - Saturday 10am - 5pm. 01225 461230. "Figurative sculpture of welded steel conveying a calm air of graceful watchfulness and serene monumentality."

Above: 'Soaring Spirit'



©Steve Burden

Steve Burden Utopian Myths

13 May - 10 June 2017

Winner of the Black Swan Open 2016, Steve presents current work inspired by his childhood growing up on the Pepys Estate in Deptford, south London, where he investigates dystopian themes and ideas associated with British housing estates.

preview Fri 12 May 6- 8pm, all welcome



©Ricky Romain

Ricky Romain 17 June- 15 July

Paintings and works on paper by Ricky Romain and related text assemblages/books by Heather Fallows, exploring themes of asylum, sanctuary and immigration.

preview 16 June 6- 8pm, all welcome

galleries | round tower | studios | shop | cafe
2 Bridge Street, Frome BA11 1EB
01373 473980 | www.blackswan.org.uk



OPEN: Mon - Sat 10am-4pm
and on Independent Market Sundays FREE ENTRY
Registered Charity No 292861

VISUAL ARTS



SANDRA HAMMER, TERESA ROGERS, VIRGINIA WHITING
2 - 27 June
 Fisherton Mill Gallery, 108 Fisherton Street, SALISBURY, SP2 7QY. Monday - Saturday 10am - 5pm. 01722 500200. "A collection of paintings by three artists drawing inspiration from their homes in Salisbury Plain, the New Forest and Cranborne Chase."

'SAILING, MUSIC, TRAVELS'
3 June - 3 July
 Arundells, 59 The Close, SALISBURY, SP1 2EN. 11am - 4.30pm. £3. 01722 743577. "Exhibition reflecting Sir Edward Heath's interests in sailing, music and travels."

CADARTS: 'LIVING CRAFTS'
5 - 10 June
 Christchurch Priory Church, Quay Road, CHRISTCHURCH, BH23 1BX. 10am - 4pm (3.30pm on 10 June). www.cadarts.co.uk. "Arts and crafts demonstrations."

'EXETER SCHOOL OF ART SUMMER SHOW: FOUNDATION DIPLOMA'
5 - 14 June
 Full venue address (please include postcode): CCI Building, Exeter College, Queen Street, EXETER, EX4 3SR. Monday - Friday 10am - 6pm. 01392 400301 / www.ExeterSchoolofArt.co.uk. "Work across a range of disciplines, including Fine Art, Fashion, Graphic Design, 3D, Photography and Surface Design."

'OUTSIDE INSIDE'
5 - 17 June
 Ilminster Arts Centre, The Meeting House, East Street, ILMINSTER, TA19 0AN. Monday - Friday 9.30am - 4.30pm, Saturday 9.30am - 2.30pm. 01460 55783. "Captivating prints and drawings by award-winning wildlife artists Chris Sinden and Jackie Cox."

HARDWAY TEXTILE GROUP: 'FIBRE YARNS'
5 - 24 June
 Bibbern Gallery, The Exchange, Old Market Hill, STURMINSTER NEWTON, DT10 1ER. 9am - 6pm. www.stur-exchange.co.uk.

'THEN & NOW'
6 June - 1 July
 CICCIC Gallery, Paul Street, TAUNTON, TA1 3PF. Tuesday - Saturday 9.30am - 4pm (Closed Friday 11 - 4pm). 01823 337477. "Work by four artschool graduates of the 1960s: Min Farrell,



DAVID BROOKE 'THE GREAT STORM'

OPEN FOR ART

"This new signature open studio art event for South Dorset features more than 80 artists in over 40 venues across the area. The event has been organised voluntarily by members of the not for profit arts organisation Artwey. This is a great opportunity for the public to see art in many diverse locations and venues. People are often curious to enter the world of the artist, and 'Open For Art' will be showcasing in places from individual artists' studios to group exhibitions in galleries, cafes, hotels, libraries and historic town halls. Artwey's aim is to promote local art and culture and make artwork accessible to all. They have been hosting bi-annual open studios in Weymouth and Portland since 2009, but this year have expanded to include Dorchester and Poundbury, and have their largest ever number of artists exhibiting. Some are taking part for the first time, while others have participated in previous Artwey and Dorset Art Weeks events. From painting and sculpture, to encaustic wax, glass and textile art and jewellery, there is work in many styles, shapes and sizes. The brochure guide is free from tourist information centres, libraries and cafes, arts shops and art venues. More information about individual artists and group shows is also available, along with an interactive map, on the website."

20 May - 4 June: Locations throughout SOUTH DORSET. www.artwey.co.uk

Tony Girardot, Cameron Scott, and Michael Tarr. Four pensioners continuing to produce varied artwork in an exciting show."

MOISH SOKAL: 'HIGH ADVENTURE'
6 June - 23 July
 Malthouse Gallery, East Lambrook Manor Gardens, EAST LAMBROOK, TA13 5HH. Tuesday - Sunday 10am - 5pm. £5.75 / £5.25. 07812 837825 / www.moishsokal.co.uk. "Sokal returns to Cusco, high in the Andes, and Iquitos in the Amazon jungle, showing his fresh watercolors alongside those from trips made earlier to Scotland and England's white cliffs."

COLFOX AND BEAMINSTER A-LEVEL SHOW
7 - 15 June
 Allsop Gallery, Bridport Arts Centre, South Street, BRIDPORT, DT6 3NR. Tuesday - Saturday 10am - 4pm. 01308 424204 / www.bridport-arts.com.

ANDREA JENKINS AND JONATHAN GARRATT
7 - 20 June
 The Gallery, Shaftesbury Art Centre, Bell Street, SHAFTESBURY, SP7 8AR. 10am - 4pm. 01747 855243.

'COAST & FOUND'
9 - 14 June
 The Courtyard Gallery, The Town Mill, Mill Lane, LYME REGIS, DT7 3PU. 10.30am - 4.30pm. www.townmillarts.co.uk. "An exhibition of coastal impressions by two self-taught Charmouth-based artists: painter Philip Winstone and sculptor Ernie Godden."

'TOWARDS THE SEA'
9 - 21 June
 The Malthouse Gallery, The Town Mill, Mill Lane, LYME REGIS, DT7 3PU. 10.30am - 4.30pm. www.townmillarts.co.uk. "Expressive new paintings by Michael Stride of the Dorset coast and beyond, plus charcoals by Jonathan Bingham."

CADARTS: 'TOTALLY TEXTILE'
9 - 29 June
 The Hayloft Gallery, 14 Wick Lane, CHRISTCHURCH, BH23 1HX. 10am - 4pm. 01202 428004. "Vibrant textile art."



'INTO THE WILD ABYSS'
9 June - 3 September
 The Royal Albert Memorial Museum, Queen Street, EXETER, EX4 3RX. Tuesday - Sunday 10am - 5pm. 01392 265858 / www.exeter.gov.uk/RAMM. "This exhibition brings together contemporary artists Gordon Cheung, Rui Matsunaga and Nahem Shoa to explore nature and spirituality in this era of accelerated technological change."

'EXHIBITION OF BOTANICAL ART'
12 June - 9 September
 The Tea Room, Dorset County Museum, High West Street, DORCHESTER, DT1 1XA. Monday - Saturday 10am - 4.45pm. 01305 262735 / www.dorsetcountymuseum.org. "Botanical artwork created by members of Martinstown Botanical Art Group. Flowers, plants, fruit, vegetables, butterflies, birds and animal paintings, mainly in watercolour or gouache."

PULL-OUT SUPPLEMENT

Time & Tide

Paintings, Prints & Jewellery
 by Liz Bath, Anne-Louise Bellis,
 Catrina Bruce & Mags Maxwell

13-21 May

weekends 9-5, weekdays 10-3

The Old Cow Shed Studio
 Manor Farm, Glanvilles Wootton,
 Sherborne DT9 5PZ
 www.theoldcowshedstudio.co.uk

BRADFORD ON AVON

THE SCULPTURE GARDEN 2017

OPENING NIGHT:
 SATURDAY 24TH JUNE
 6PM - 9:30PM, tickets: £6
 (includes a glass of wine and live music from Thin Ice)

OPENING DATES AND TIMES:
 11AM - 6:30PM, SUNDAY 25TH JUNE TO SUNDAY 2ND JULY
 (closed Monday)
 Late night opening
 Friday 30TH June
 11am - 9pm, tickets: £3

VENUE: Lynchetts, 15 Woolley Street,
 Bradford on Avon, BA15 1AD
 www.boaartsfestival.com

Cathy Veale

Exhibition of Paintings

27th May - 3rd June
 Catholic Hall, Rempstone Road
 Swanage. Open 10am - 5pm
 www.cathyveale.co.uk

WESSEX FESTIVALS GUIDE 2017



WESSEX FESTIVALS 2017

LYME REGIS FOSSIL FESTIVAL

28 - 30 April

LYME REGIS. Free entry. www.fossilfestival.com. "Walks, talks, theatre, music, comedy, exhibits and lots of hands-on science for all ages."

SHERBORNE ABBEY FESTIVAL

28 April - 2 May

Sherborne Abbey, SHERBORNE, Dorset. www.sherborneabbeyfestival.org / 01935 815341. "Uplifting celebration of music and song."

NORTH SOMERSET ARTS WEEK

28 April - 7 May

Various locations across NORTH SOMERSET. www.northsomersearts.org. "An arts trail across North Somerset that showcases local talent and champions local arts. Visit local exhibitions and take part in events across the region."

CHEDDAR ARTS FRINGE

29 April - 1 May

Various locations in CHEDDAR, BS27 3LG. 10am - 4pm. www.cheddarvillage.co.uk. "Arts trail visiting studios around the village."

LARKHALL OPEN ART STUDIOS

29 April - 1 May

Various locations throughout LARKHALL, Bath. www.bathopenstudios.co.uk. "A rich array of painting, printmaking, sculpture, ceramics, glass, jewellery, photography, automata and textiles."

ALL ROADS LEAD TO FROME

6 May

Cheese and Grain, FROME. 01373 455420 / www.cheeseandgrain.com. "One day, two stages, twenty acts. Line-up includes Decade, Gaz Brookfield, Freeze The Atlantic, Ghost Of The Avalanche, Port Erin, Mick O'Toole, Turner."

NEWBRIDGE ARTS TRAIL

6 and 7 May

Various locations in NEWBRIDGE and LOWER WESTON, Bath. www.newbridgeartstrail.com. "Artists and makers open up their homes and studios to share their work and process."

BS9 ARTS TRAIL

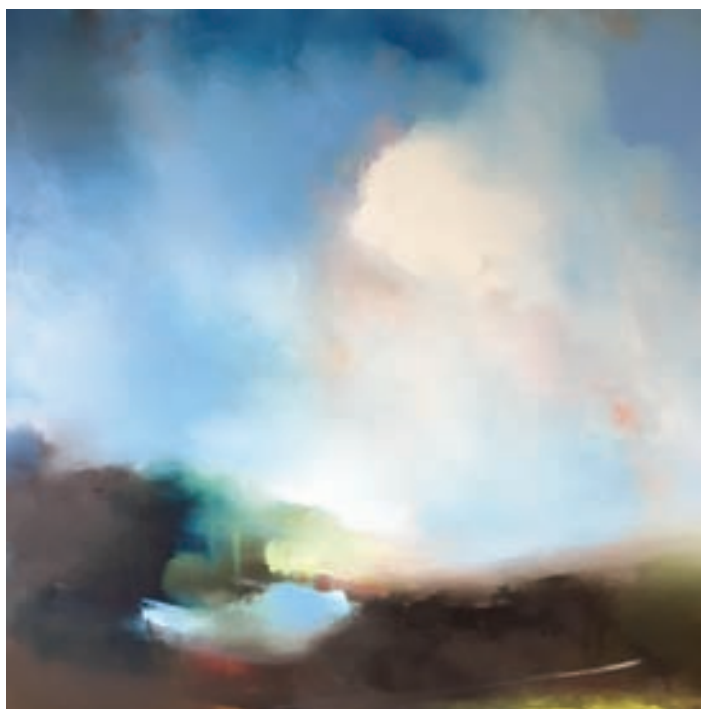
10 and 11 May

Various locations, BRISTOL, BS9. www.bs9arts.co.uk. "75 artists show work in venues in Henleaze, Stoke Bishop and Westbury-on-Trym."

CURSUS CIDER AND MUSIC FESTIVAL

12 - 14 May

SIXPENNY HANDLEY, near Salisbury, Dorset, SP5 5RX. www.cursusfestival.com. "Small and super friendly 3 day festival on the Cranborne Chase. Locally sourced food and cider plus nightly communal camp fire. Families, dogs and live-in vehicles welcome. Line-up includes Gadge Scum, Counting Coins, Skimmity Hitchers, China Shop Bull, Nick Harper, Funke & The Two Tone Baby, General Roots."



LAURA RICH 'BLINK AND YOU'LL MISS IT' (Oil on aluminium, 61 x 61 cm)

WYLYE VALLEY ART TRAIL

27 May - 4 June

Locations throughout the WYLYE VALLEY, Wiltshire. www.wvat.co.uk. "The Wyllye Valley Art Trail is the largest and most diverse open studios event in Wiltshire, and takes place in some of the most gorgeous countryside this beautiful county has to offer. Painters, sculptors, potters, glass artists, jewellery and furniture makers, photographers and even a milliner are throwing open their studio doors to the art-loving public in locations from tiny rural outposts to bustling market towns, all within a ten-mile radius of the centre of the Wyllye Valley in south Wiltshire. Some artists are exhibiting in their own studios, others have grouped together to show in larger spaces, such as village halls and even galleries. There are award-winning artists with an international clientele exhibiting close by others who are only just starting out along their creative path, traditionalist landscape painters near abstract digital artists, glassblowers not far from scrap metal sculptors, potters hard by jewellers: there's something to suit every taste."

SIDMOUTH SEA FEST

13 May

The Ham, SIDMOUTH. www.visitsidmouth.co.uk.

WIDCOMBE ART TRAIL

13 and 14 May

Various locations in WIDCOMBE, Bath, BA2 6AA. Free entry. 10.30am - 5.30pm. www.widcombearttrail.com. "This is the Widcombe Art Trail's eleventh year and it is bigger and better than ever!"

SOUTHBANK BRISTOL ARTS TRAIL

13 and 14 May

Various locations in SOUTHVILLE, BEDMINSTER, and ASHTON, South Bristol. 11am - 6pm. www.southbankbristolarts.co.uk. "Bristol's oldest and biggest arts trail, now in its 15th year. The list of participants reads like a contemporary craft exhibition and fine art fair rolled into one."

ART WEEK EXETER

13 - 21 May

Locations throughout EXETER, Devon. www.artweekexeter.org.uk. "Exeter's city-wide contemporary visual arts festival showcasing local, national, and international artists. With free exhibitions, workshops, lectures and events, installations in significant city buildings, art in the street and open studios - there's always something new to explore."

WIMBORNE LITERARY FESTIVAL

13 - 21 May

Various locations in WIMBORNE, Dorset. www.wimborneliteraryfestival.co.uk.

TRINITY GARDEN PARTY

14 May

Trinity Centre, Trinity Road, BRISTOL, BS2 0NW. 12noon - 9pm. Free entry. www.3ca.org.uk / 0117 935 1200. "Trinity's free annual event featuring live music, workshops, food and entertainment. Line up includes Dubkasm, Sounds Of Harlowe, Sepia, Run Logan Run, Toddler, Tezeta, Motes."

OPEN STUDIOS AT 44AD

19 and 20 May

44AD Artspace, 4 Abbey Street, BATH, BA1 1NN. Friday 6 - 9pm, Saturday and Sunday 10am - 6pm. www.44ad.net. "44AD is home to some of Bath's brightest visual artists. This is a great opportunity to meet the artists, see their studios and discuss their practice."

SEVEN SEAS FESTIVAL

19 - 21 May

Harbourside Park, POOLE, Dorset. Free entry. www.sevenseasfestival.com. "Three days and two nights of free family-friendly international food, music and culture in partnership with Poole Maritime Festival. A world of seafaring sounds, tastes and traditions represented in seven micro-sites with like Eskimos giant igloo, the Poole Harbour Big Wheel and the Maritime Event Arena hosting tribute bands, circus and fire show."

THE BATH FESTIVAL

19 - 28 May

Various locations in BATH. www.bathfestivals.org.uk / 01225 463362. "A new flagship festival for Bath - 10 days and over 130 events featuring the biggest and brightest names in literature, words and music - celebrating the world heritage city of Bath. The festival supersedes the Bath Literature Festival and Bath International Music Festival."

FANFARE FOR SPRING

20 May

Town centre, RINGWOOD. 10.30am - 4.30pm. www.fanfareforspring.co.uk. "The market town of Ringwood will be buzzing with hundreds of street performers from the UK and abroad. Around every street corner you will find musical and artistic surprises including choirs, bands, school dance, theatre, pavement artists, buskers, storey tellers, comedians and even Punch and Judy!"

SUPPLEMENT COVER: NINEBARROW (WESSEX FOLK FESTIVAL, BRIDPORT FOLK FESTIVAL)



WESSEX FESTIVALS 2017

FREE EXPRESSION

21 May

BLANDFORD FORUM, Dorset. Free entry. 10am - 4pm. www.free-expression.com. "A dynamic and diverse community arts festival taking place in and around the attractive riverside town of Blandford Forum. Showcasing a wide range of the arts. Creative workshops for all the family, musical and theatrical performances and the first Great Dorset Art Fair. Something for everyone."

SHINDIG WEEKENDER

26 - 28 May

Gilcombe Farm, BRUTON, Somerset, BA10 0QE. www.shindig-events.co.uk. "Shindig is a glorious mash up of a gig, a house party, a circus show, a series of curious craft workshops, a wellbeing retreat and a kid's party. No main stages, just a beautiful arrangement of stretch marquees, so you can be in amongst it, or sitting on the grass sipping something cold and enjoying the beautiful view. Line-up includes The Heavy, Sugarhill Gang, Todd Terry, Dub Pistols, Stanton Warriors, Fabio & Grooverider, DJ Marky, LTJ Bukem, Utah Saints, Sam & The Womp."

LYME REGIS JAZZ & BLUES WEEKEND

26 - 29 May

Various venues in LYME REGIS, Dorset. www.lymeregisjazzfestival.co.uk / 01297 442138. "A four day musical extravaganza in an idyllic seaside setting of Lyme Regis, bringing together the best of jazz, soul and blues for festival-goers and visitors alike. Combining national and international headliners at the Marine Theatre with over 10 hours of free jazz and blues concerts by the sea, plus B Sharp's acclaimed Busking Festival. Line-up includes Ruby Turner, The Jive Aces, Wille & The Bandits, Swing Unlimited All Stars Big Band."

CHIPPENHAM FOLK FESTIVAL

26 - 29 May

Town Centre, CHIPPENHAM. www.chippfolk.co.uk. "Great traditional style festival catering for all the family with over 200 events over the Bank Holiday weekend. Great concerts, display teams, amazing ceilidhs and dances, all in a lovely Georgian country town."

SALISBURY INTERNATIONAL ARTS FESTIVAL

26 May - 10 June

Various locations in and around SALISBURY, Wiltshire. www.salisburyfestival.co.uk.

FRINGE ARTS BATH

26 May - 11 June

Various locations, BATH. www.fringeartsbath.co.uk. "FAB17 offers 17 days of free exhibitions and events, taking over unexpected spaces and transforming empty shops to fire your imagination with a wide selection of artworks. We invite you to explore the range and quality of Bath's ever growing visual arts scene."



PRIDDY FOLK FESTIVAL

8 - 10 July

Priddy Green, PRIDDY, Somerset, BA5 3BB. www.priddyfolk.org. "This friendly festival is held in the idyllic setting of Priddy Village Green high on the beautiful Mendip Hills AONB near Wells in Somerset. Now in its 26th year this festival has a reputation for exciting new folk. The weekend also provides great music and dance workshops, yoga sessions, a club tent, an excellent craft and traders market, guided archaeology walks, plus a full programme of children's entertainment and much more. Line-up includes Flook (above), Jamie Smith's Mabon, Faustus, The Shee, Tom McConville, Kitty Macfarlane, Topette, Laura Beth Salter and Jenn Butterworth, Jim Causley Trio, Leon Hunt Trio, Mawkin, Adam Holmes, Talisk, Effra, Gadarene, Lasair, Medicine Creek, Perkelt, Ushti Baba."

DOT TO DOT

27 May

Various venues, BRISTOL. www.dottodotfestival.co.uk. "Line-up includes Sundara Karma, Amber Run, The Growlers."

LOVE SAVES THE DAY

27 and 28 May

Eastville Park, BRISTOL, BS5 6XA. 11am - 11pm. www.lovesavestheday.org.

BEAR FLAT OPEN STUDIOS

27 - 29 May

Locations in and around Bear Flat, BATH. 11am - 5pm. www.bearflatartists.co.uk. "A short walk from Bath rail and bus stations, Bear Flat Open Studios trail boasts over 20 venues and includes jewellery, ceramics, feltwork, photography, stone carving, glass, paintings, and prints."

WESSEX FOLK FESTIVAL

2 - 4 June

Harbourside, WEYMOUTH, DT4 8TJ. Free entry. www.wessexfolkfestival.com. "Family festival with two free stages showcasing a range of traditional and modern folk acts. Morris dancing, food and craft stalls along the picturesque harbourside. Workshops and traditional music sessions in the local pubs. Line-up includes Ninebarrow, Paul Openshaw, Polly Morris Band, No Direction, Mad Magdalen, Wild Willy Barrett's French Connection, The Foxglove Trio, Barney Newman and Tom Leary, Doc Clarke's Remedy, Amy Hopwood, Dorset Wrecks, FolkLaw, Jo Carley and the Old Dry Skulls, John Meriton, The Wild Rover Set, The Lonesome Stampede, No Mean Feet, The Sherborne Folk Band, Sue Stevens, Three Pressed Men, Weymouth Ukuleleans."

HOME FARM FEST

9 - 11 June

Home Farm, CHILTHORNE DOMER, near Yeovil, Somerset, BA22 8RD. www.homefarmfest.co.uk. "With over 120 performers, and an adult Weekender ticket price of only £45, it's one of the cheapest festivals in the UK! Run by the charity School in a Bag as their biggest annual fundraiser, it's raised over £253,000 thanks to the generosity of the bands who play for free and all the volunteers who help run the festival. Line-up includes Crimson on Silver, Snakebyte, Hundred Days, Daniel Duke, Newton Country, Nick Cope."

GREEN SCYTHE FAIR

11 June

Thorney Lakes, MUCHELNEY, near Langport, Somerset, TA10 0DW. 11am - 11pm. www.greenfair.org.uk. "This is a magical one day environmental fair in a beautiful setting on the Somerset Levels run entirely by volunteers on wind, sun and muscle power. Excellent live music, over 70 stalls displaying traditional skills, crafts and produce, lively environmental debates, delicious organic local food, a variety of the best ales and ciders and a large kids area with activities throughout the day."

BRIDPORT FOOD FESTIVAL

11 - 17 June

Various locations in BRIDPORT, Dorset. www.bridportfoodfestival.co.uk. "Everything delicious in the Bridport area."

TEIGNMOUTH FOLK FESTIVAL

16 - 18 June

TEIGNMOUTH, South Devon. www.teignmouthfolk.co.uk / 01803 290427. "A small friendly traditional festival in a lovely seaside town. Good rail links. Camping available with weekend tickets. Line-up includes Chris Wood, Ewan McLennan, Barron Brady, James Dumbleton & Andy Clarke, Canaan's Land, The Mooncoin Ceilidh Band, Celt, Eat The Rich, City of Plymouth Pipe Band."

SHERBORNE SUMMER FESTIVAL

17 June

Purlieu Meadows, SHERBORNE, Dorset. 12noon - 10pm. "Great entertainment and events."

SOMERFEST

17 June

Town centre, TAUNTON, TA1 1HE. 12noon - 6pm. www.somerfest.net / 01458 259638. "Outdoor arts festival featuring theatre, circus, dance, comedy, plus national, international and local artists, family friendly workshops, food and drink."

PETHERTON FOLK FEST

17 June

Various locations in SOUTH PETHERTON, Somerset. 10am - 6pm. 07542 633 852 / www.pethertonfolkfest.org.uk. "A full day of entertainment for the whole family. Singers, dancers, and bands here to entertain you for free!"

prospect

SOMERSET ART WEEKS FESTIVAL 2017
23 SEPTEMBER - 8 OCTOBER
www.somersetartworks.org.uk

SCiW
somerset
art weeks

Priddy Folk Festival
7th-9th July 2017

Flook, Jamie Smith's Moban, Faustus,
 The Shee, Tom Mc Conville,
 Jen Butterworth and Laura Beth Salter, Topette,
 Mawkin, Leon Hunt Trio, Adam Holmes, Talisk,
 Jim Cowsley Trio, Godarene, Ushki Baba, Medicine Creek,
 Jimmy Aldridge & Sid Goldsmith, The Firepit Collective, Lascar,
 Ceilidhs, Workshops, Free Dance and Children's Festivals,
 Arts and Crafts Fairs, Beer & Cider Tent, World Food

All in the beautiful Mendip Hills near Wells

Tickets from www.priddyfolk.org

HAISWAY
 SALISBURY

AFO
 11/12/13

MEDIA SPONSOR
ROOTS
www.fromefarm.org

EBC

**SUNSET
 RIDGE**

SUNDAY 9 JULY 2017

**PALOOKA 5 • KAREN • THE HAYWAINS
 GRIS-DE-LIN • DESIGN
 PSYCODAISIES**

+ MORE TO BE CONFIRMED + DJ ALAN FLINT

**PRINCE OF WALES • HAM HILL • SOMERSET TA14 6RW • 1 - 8 PM • FREE ENTRY
 SUGGESTED DONATION £5 • ALL PROFITS TO THE MURRAY PARISH TRUST**

Purbeck Art Weeks
27 MAY ~ 11 JUNE

festival 2017

**PURBECK ART WEEKS
 FESTIVAL**

**OPEN STUDIOS,
 CONCERTS,
 TALKS,
 DANCE &
 COMPETITIONS**

**Two weeks of arts
 and inspiration**

for more information and event ticket sales visit
purbeckartweeks.co.uk

f t i

WESSEX FESTIVALS 2017



SIMON RICHARDSON

FROME OPEN STUDIOS

8 - 16 July

Various locations in FROME, Somerset. 11am - 5pm. www.fromeopenstudios.co.uk. "An exciting opportunity to meet and buy art and craft products direct from the many artists and makers in Frome and the surrounding villages. Look out for your free trail map available in many outlets across Somerset. Expect to find high quality paintings, ceramics, jewellery and textiles at affordable prices."

MIDSOMER ARTS FESTIVAL

17 - 28 June

Various locations in MIDSOMER NORTON, Wessex. www.midsomerartsfestival.weebly.com / 01761 419133. "The third annual arts festival showcases painting, sculpture, craft, music, drama and dance by locals and visitors. There are art displays around town, film screenings, music workshops and performances."

GLASTONBURY FESTIVAL

21 - 25 June

Worthy Farm, PILTON, Somerset, BA4 4LY. www.glastonburyfestivals.co.uk.

SIDMOUTH LITERARY FESTIVAL

23 - 25 June

VARIOUS LOCATIONS, SIDMOUTH, East Devon. www.sidmouthlitfest.co.uk / 01395 579969. "A summer weekend celebrating great writing in the beautiful seaside town of Sidmouth. Line-up includes Sophie Hannah, Adele Park, Tim Pears, Bryony Gordon, Noel 'Razor' Smith, Valerie Grove."

FOLK ON THE QUAY

24 June

The Quay, POOLE. www.folkonthequay.co.uk. "Folk on the Quay is a free folk music festival with outdoor music stages, two ceilidh dances and over twenty teams of morris dancers in the streets overlooking Poole's lovely harbour."

BEAMINSTER FESTIVAL

24 June - 2 July

Various locations in BEAMINSTER. www.beaminsterfestival.com.

CHALKE VALLEY HISTORY FESTIVAL

26 June - 2 July

Bury Lane, BROAD CHALKE, near Salisbury, Wiltshire, SP5 5DP. www.cvhf.org.uk. "The Daily Mail Chalke Valley History Festival is the largest festival dedicated entirely to history. It offers a unique blend of talks, discussions and debates alongside a vast living history through-the-ages encampment and stunning air show. Line-up includes Dan Snow, Harriet Harman, Chris Patten, Antony Beevor, John Julius Norwich, Peter Frankopan, Don McCullin, Niklas Frank."

WEST SOMERSET FOLK FESTIVAL

30 June - 2 July

Recreation Hall, CARHAMPTON, near Minehead, Somerset. www.westsomersetfolkfestival.co.uk. "Line-up includes Acorn Shanty Crew, Alice & David Wylde, Pete Collins, Daisybell, Graham Collins, Good Company."

SOUTHCIDER FESTIVAL

30 June - 2 July

Bredy Farm, BURTON BRADSTOCK, Dorset, DT6 4ND. www.southciderfestival.com. "500 capacity music festival on Dorset's Jurassic coast. Two hand built stages of live music. Spacious camping and beautiful views of the Bride Valley. Line-up includes Mad Dog Mcrea, The Eskies, K.O.G and the Zongo Brigade, Pronghorn, B.O.M.B.S, Shoot The Moon, The Graveltones, The Surfin' Birds."

GILLFEST

30 June - 9 July

Various venues, GILLINGHAM, Dorset. www.gillfest.org. "Line-up includes Rick Wakeman, The Manfreds, Ben Waters Big Band, Cara Dillon, Gary Ryan, Pam Ayres, Big Brass Ska, Julie Dunne, Cuckooland, Gillingham Imperial Silver Band, Opera Night."

PARTY BY THE PARRETT

1 July

The Rec, KINGSBURY EPISCOPI, Somerset, TA12 6AX. 2 - 11.30pm. www.partybytheparrett.co.uk / 01460 249139. "An afternoon and evening packed with a huge variety of bands and musicians playing music from different decades and genres. Line-up includes Renegades, Utter Chaos, Eve's Band, Bootleg Swing Band, Alfie Saunders, Kingsbury Episcopi School Choir."

WELLIESTOCK FESTIVAL

1 July

WELLINGTON, Somerset. www.wellistock.com.

MARLBOROUGH OPEN STUDIOS

1 - 23 July

Locations in and around MARLBOROUGH, Wiltshire. Saturday and Sunday 11am - 5pm. www.marlbroughopenstudios.co.uk. "An opportunity for the public to meet professional artists in the beautiful north Wessex Chalk Downs and visit their studios, workshops or galleries over four weekends in July."

SAMPHIRE FESTIVAL

7 - 9 July

Porlock Hill, PORLOCK, Minehead, Somerset TA24. www.samphirefestival.com. "Samphire is back for season two. After a wonderful first year our independent music and arts festival on Exmoor National Park with magical sea views will take place again this July. This time around it'll be a three day knees up introducing Sunday Funday, with more music, more people, more venues, more quirky workshops, day time activities and silly games. Two nights, three days, four stages. Come dance by the sea..."

WESSEX FESTIVALS 2017

UK INTERNATIONAL BOOGIE WOOGIE FESTIVAL

7 - 9 July

Venues throughout STURMINSTER NEWTON, Dorset. www.ukboogiewoogiefestival.co.uk. "A must for any boogie woogie enthusiasts and just plain fun for anyone who likes live music."

WONDER FIELDS

7 - 9 July

Great Fulford, DUNS福德, Exeter, Devon, EX6 7AJ. www.wonderfields.co.uk.

BUDLEIGH MUSIC FESTIVAL

7 - 15 July

BUDLEIGH SALTERTON, Devon. www.budleighmusicfestival.co.uk. "Welcome to classical music on the Jurassic coast, evening concerts performed by top international artists and a series of free lunchtime concerts featuring local or up and coming talent. Evening concerts feature soloists, quartets and an orchestra, plenty for all to enjoy."

FROME FESTIVAL

7 - 16 July

Various venues throughout FROME, Somerset. www.fromefestival.co.uk / 01373 455420. "A stellar cast heads up a huge range of activities covering arts, crafts and lifestyle at this year's Frome Festival, now in its 17th year. Line-up includes Steve Harley and Cockney Rebel, The Wonderstuff, Bollywood Brass Band, Andy Parsons, Jeremy Hardy, Gyles Brandreth, Dr. David Starkey, Anne Widdecombe, Dame Felicity Lott, Frome Symphony Orchestra."

SUNSET RIDGE

9 July

Prince of Wales, HAM HILL, near Yeovil, Somerset, TA14 6RW. 1 - 8pm. Free entry. "The Electric Broom Cupboard's annual festival of original music. Line-up includes Palooka 5, Karen, The Haywains, Design, Gris-de-Lin, Psychodaisies, 13 Frightened Girls."

ONCE UPON A TIME IN THE WEST

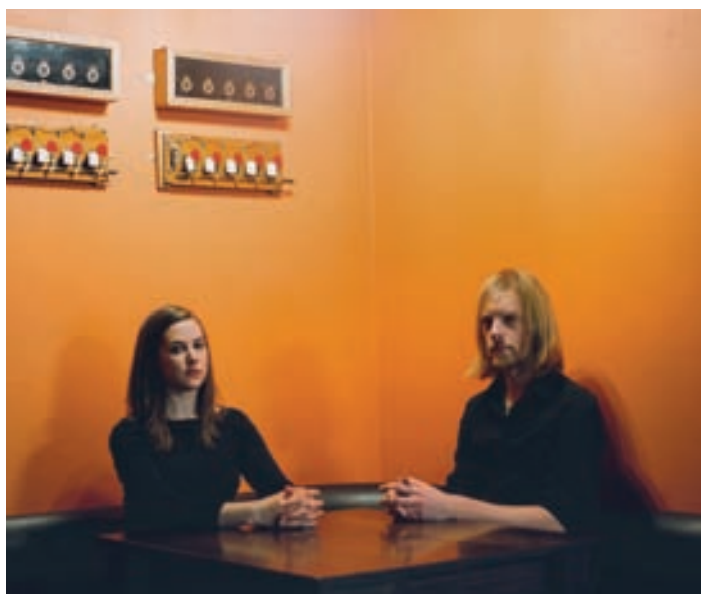
13 - 15 July

Deepest WILTSHIRE (near Trowbridge and Westbury). www.outwestfestival.co.uk.

SWANAGE JAZZ FESTIVAL

14 - 16 July

Various locations in SWANAGE, Dorset. www.swanagejazz.org / 01929 422215. "Forty plus bands plus our beautiful town and scenery attract a national audience and have made Swanage Jazz Festival one of the leading events in the UK jazz calendar for the past twenty seven years. Line-up includes Jean Toussaint, Alan Barnes, Amina Figarova Quintet, Darius Brubeck Quartet, Greg Abate, Gilad Atzmon's Orient House Ensemble, Nigel Price Trio, Zoe Rahman, Arun Ghosh Quintet, Matt Ridley Quartet, Ivo Neame, Quartet, Laura Jurd Dinosaur, Freddie Gavita Quartet, Keith Nichols Blue Devils, Dixie Strollers, John Maddocks Jazzmen, Sinead McCabe."



SIDMOUTH FOLK WEEK

4 - 11 August

Venues throughout SIDMOUTH, East Devon. www.sidmouthfolkweek.co.uk / 01395 577952. "Sidmouth FolkWeek is an unmissable week-long seaside celebration of folk music, dance and song in a beautiful East Devon coastal location. The longstanding event attracts tens of thousands of visitors to over 700 diverse events with broad 'something for everyone' appeal. Expect major concerts, lively roots parties, small intimate sessions, ceilidhs and folk dancing, storytelling, fun family entertainment and youth-centred sessions, hands-on workshops and spectacular dance displays, the best in South West crafts and the tastiest of local food and drink. The venues, streets and seafront spill over with spectacular music, dance and song, vibrant colour and welcoming atmosphere! Line-up includes Show of Hands with Miranda Sykes, Seth Lakeman, Lau, Oysterband, Josienne Clarke & Ben Walker (above), Catrin Finch & Seckou Keita, Ralph McTell & Wizz Jones, Dervish, Duncan Chisholm, George Monbiot & Ewan McLennan, Chris Wood, Leveret, Martin Carthy & Sam Sweeney, Jim Causley Trio, Rura, Batch Gueye, Alden Patterson & Dashwood."

TOLPUDDLE FESTIVAL

14 - 16 July

TOLPUDDLE, Dorset. www.tolpuddlemartyrs.org.uk. "A weekend of family entertainment, stalls, political debate, comedy, music and a grand procession through the village."

RIVER TOWN

14 - 17 July

Colston Hall, BRISTOL. www.colstonhall.org. "For the third year running, Colston Hall will team up with St George's to bring together some outstanding home-grown and US artists in the spirit of collaboration. This four night Americana festival will celebrate the remarkable roots music that grows deep in American soil. Barn-storming live music!"

THE GODNEY GATHERING

15 July

Garslade Farm, GODNEY, Glastonbury, BA5 1RX. £25. www.thegodneygathering.com. "The Godney Gathering has quickly established itself as the UK's number 1 single day micro festival, achieving outstanding reviews both locally as well as nationally. Attracting 4,999 people over 10.5 hours, being entertained by seven stages and over 75 performances. 2017 genuinely represents the biggest and best to date. Line-up includes The Darkness, Dub Pistols, Ferocious Dog, Nathan Grisdale, The Bar Steward Sons of Val Doonican, Whitehall Parade, The Mini Band, The Leylines, Shoot the Moon, Departed, The Kaizens, Fingertrap, Filta, The Fens, Stone Cold Fiction, Ant Noel & the Peabody Drakes, Kev and the Destroyers, Missy Edwards Band."

BROADCIDER CIDER & MUSIC FESTIVAL

15 July

Broadway & Horton Cricket Club, Pound Road, BROADWAY, near Ilminster, Somerset, TA19 9JX. www.fuelledbycider.com. "Brand new one day cider and music festival in the heart of Somerset. Line-up includes Skimmity Hitchers, Palooka 5, Design, King Tut's Revenge, The Surfin' Birds."

GROOVES ON THE GREEN

15 and 16 July

Ashley Cross Green, POOLE. £5 / £3. www.groovesonthegreen.co.uk. "Two days of family friendly frolics on Poole's coolest urban village green."

SCRUMPY & WESTERN EXTRAVAGANZA

21 and 22 July

Fernhill Farm, Cheddar Road, COMPTON MARTIN, Somerset, BS40 6LD. www.fuelledbycider.com. "It's 50 years since Adge Cutler & The Wurzels coined a phrase and invented a music genre. To celebrate, here's a weekend of cider-fulled music from The Wurzels and the bands they have inspired. Line-up includes Skimmity Hitchers, The Inbredz, Corky, The Surfin' Turnips, Dorset Phil, The Scrumpy Swillers, Bill Smarme & The Bizness."

GUMBEERFEST

21 and 22 July

Stogumber Cricket Club, STOGUMBER, Taunton, Somerset, TA4 3TQ. www.gumbeerfest.co.uk. "A small festival offering a wide range of ales and ciders to accompany our line-up of live music."

CHAGSTOCK FESTIVAL

21 and 22 July

Whiddon Down, near CHAGFORD, Devon. www.chagstock.info. "Set in 70 acres of farmland on the edge of Dartmoor, Chagstock is renowned for its stunning location, diverse line-up of artists and non-corporate, family friendly atmosphere. Line-up includes The Shires, Soul II Soul, Dub Pistols, Raghu Dixit, Skinny Lister."

BEER AND BLUEGRASS FESTIVAL

21 and 22 July

Victoria School and Gardens, Branksome, POOLE, BH13 6AS. 0844 576 3000 / www.beerandbluegrass.co.uk. "A musical celebration of bluegrass and Americana, featuring some of world's finest musicians with a beer and cider festival complete with excellent home cooked food."

BRISTOL HARBOUR FESTIVAL

21 - 23 July

Harbourside, BRISTOL. Free entry. www.bristolharbourfestival.co.uk. "Two miles of entertainment along Bristol's iconic harbour, including a dance village, three music stages, boating entertainment on the water, unusual vessels, a children's and circus mecca created by Cirque Bijou and regional food markets."

Yeovil
SUPER SATURDAY
YEovil TOWN CENTRE 23 SEPTEMBER 9.30am - 4pm



BUSKFEST
CELEBRATING GARDENING
VINTAGE MARKET
BUGFEST
CHILDREN'S ACTIVITIES
AND MUCH MORE!

www.facebook.com/yeovilsupersaturday

WESSEX FESTIVALS 2017

DIRT DON'T HURT

21 - 23 July

Near POOLE, Dorset. www.dirtndonthurt.co.uk. "Charity festival with lively entertainment and music from various artists. The perfect mix of folk, ska, reggae, rock, blues, alternative, jungle, drum and bass, hip hop and house."

PRIMING THE PUMP

21 - 23 July

White Horse Country Club, Coach Road, WESTBURY, Wiltshire, BA13 4LY. £40 / £25. Free camping. www.primingthepump.co.uk / 07754 437888. "A fund raising event that is intended to be a great weekend for our loyal pumpers and an introduction to a variety of music for our new followers. It is hoped that this will be a platform on which to build more great things in 2018 and beyond."

MUDEFORD ARTS FESTIVAL

22 and 23 July

Mudeford Quay Green, MUDEFORD, Christchurch, Dorset, BH23 4AB. Free entry. www.mudefordartsfestival.net. "A community festival of arts and crafts featuring the best of local work. Also a full programme of entertainment and a wide range of food. Children are well catered for with a wide range of craft work and an opportunity to watch the experts at work."

TAUNTON LIVE

24 - 30 July

Locations throughout TAUNTON, Somerset. www.tauntonlive.co.uk. "An exciting celebration of the performing and creative arts."

WOMAD

27 - 30 July

Charlton Park, MALMESBURY, Wiltshire, SN16 9DG. www.womad.co.uk. "The original and biggest celebration of music, arts, food and dance from across the world."

CAMP FESTIVAL

27 - 30 July

Lulworth Castle, LULWORTH, Dorset. www.campfestival.net. "Line-up includes Madness, Brian Wilson presents Pet Sounds, Mark Ronson, Holly Johnson, All Saints, Leftfield, Anne-Marie, Lightning Seeds, Reverend And The Makers, Kate Nash, Louisa Johnson, The Cuban Brothers, Skinny Lister, The Christians, Becky Hill, The Bootleg Beatles, Right Said Fred, Dub Pistols, The Blockheads."

UPFEST

28 - 30 July

BEDMINSTER, Bristol. Free entry. www.upfest.co.uk. "Europe's largest live urban art festival, Upfest brings hundreds of the most cutting edge and diverse street artists into the city to paint buildings, surfaces, vehicles and canvases alive in the streets. This annual festival attracts more than 25,000 visitors from all over the world. This year, the festival will be running for an extra day, encouraging families to get more involved with workshops from popular street artists."



I FAGIOLINI

PURBECK ARTS WEEK

27 May - 11 June

Various locations in PURBECK, Dorset. www.purbeckartweeks.co.uk. "Our festival is unique. It offers something for everyone from fine art to fine music. The whole community is involved and inspired - and we hope you will be too. Over 100 visual artists are taking part - and we have a rich array of open studios for you to explore, plus exhibitions at Rollington Barn and the Fine Foundation Gallery, Durlston Castle. Alongside the visual arts you will find a full, exciting and inspiring programme of events. Round off your day with superb concerts of music from the renaissance to twentieth century played by internationally acclaimed vocal and instrumental performers. Line-up includes The Fieri Consort, Atea Quintet, I Fagiolini, Purbeck Poets, Gabrieli Consort, Miranda Fulleylove."

DILLINGTON CLASSICAL GUITAR FESTIVAL

30 July - 3 August

Dillington House, ILMINSTER, TA19 9DT. www.dillington.com / 01460 258613. "Celebrating 23 years this year's festival will feature the music of Spain and Latin America with concerts by some of today's leading international ensembles and soloists. Line-up includes Graham Devine, Simon Pearce, Peter Rueffer, Copenhagen Guitar Duo, Arne Brattland, Debra Adamson & Raymond Burley, Vida Guitar Quartet, Mark Eden, Mark Ashford, Amanda Cook, Christopher Stell."

OUTCIDER FESTIVAL

4 - 6 August

Fernhill Farm, Cheddar Road, COMPTON MARTIN, Somerset, BS40 6LD. www.outciderfestival.com. "500 capacity festival with a reputation for original music, fantastic cider and fun, friendly atmosphere. 18 plus, no dogs allowed. Live-in vehicles welcome. Line-up includes The Dreadnoughts, Gaz Brookfield, Maid Of Ace, Hymn For Her, Skimmity Hitchers, The Stiff Joints, Gypsy Ska Orquesta, Captain Hotknives."

BRIDPORT FOLK FESTIVAL

11 - 13 August

Town Centre, BRIDPORT, Dorset. Free entry. "Bridport's first folk festival. Three open air stages, plus indoor venues for concerts, workshops and ceilidhs. Line-up includes Shanty Crews, Reg Meuross, Ninebarrow, The Polly Morris Band, Tinderbox, Devonbird, Kadia, No Strings Attached, Acoustic Rooster."

BURTON BRADSTOCK FESTIVAL OF MUSIC AND ART

14 - 19 August

Various locations in BURTON BRADSTOCK, Dorset. www.burtonbradstockfestival.com / 01308 897203. "Six days of brilliant classical, jazz and world music with internationally acclaimed performers and an exhibition featuring some of the finest art and ceramics in the South West."

HOO-HA FESTIVAL

16 - 18 August

Colston Hall, BRISTOL. www.colstonhall.org. "Back-to-back kid-friendly performances, interactive workshops and shows, plus plenty of free foyer shows and activities."

BEAUTIFUL DAYS

18 - 20 August

Escot Park, near OTTERY ST MARY, Devon. www.beautifuldays.org. "A family music festival with five stages, spectacular site art, a huge children's area in the centre of the festival, comedy, theatre, family camping, licensed real ale bars, carefully selected food and craft stalls, plus a village shop. Line-up includes Paul Heaton & Jacqui Abbott, Levellers, Frank Turner & The Sleeping Souls, The Sisters Of Mercy, Alison Moyet, Public Service Broadcasting, The Waterboys, Lightning Seeds, New Model Army, Stiff Little Fingers, Turin Brakes, Hayseed Dixie, Eliza Carthy & The Wayward Band."

PURBECK VALLEY FOLK FESTIVAL

24 - 27 August

Purbeck Valley Farm, CORFE CASTLE. www.purbeckvalleyfolkfestival.co.uk. "A unique festival on the beautiful Jurassic coast. It's based on a little farm and it's 'how festivals used to be' - it's friendly, great for kids and adults alike, and small enough to be able to wander around and not lose your friends! Line-up includes Badly Drawn Boy, 3 Daft Monkeys, This Is The Kit, Blue Rose Code, John Smith, Lady Maisery, Gadarene, Ben Waters Band, Moscow Drug Club, Curtis Eller's American Circus, Emily Barker, Flats & Sharps, Hatful of Rain, Vera Van Heeregen, Jess Morgan Trio."

CAMPING BE CIDER SEASIDE

25 - 27 August

Bredy Farm, BURTON BRADSTOCK, Dorset, DT6 4ND. www.fuelledbycider.com. "Bargainous bank holiday camping weekend with two stages of live music, bar, catering and camp fire. Just a stone's throw from the Dorset coast. Families, dogs and live-in vehicles welcome. Line-up includes Pronghorn, Ten Zero One, Ulysses, September Son, Bad Cowboys."

END OF THE ROAD

31 August - 3 September

Larmer Tree Gardens, TOLLARD ROYAL, Dorset. www.endoftheroadfestival.com. "Set in the beautiful surroundings of Larmer Tree Gardens, End of the Road festival takes a lot of pride in all the 'little things' that make a great festival. Line-up includes Father John Misty, Band Of Horses, The Jesus & Mary Chain, Slowdive, Japan Droids, Alvvays, Pond, The Lemon Twigs, Deerhoof, Let's Eat Grandma, Goat Girl, The Spook School."

LYME FOLK WEEKEND

1 - 3 September

Various venues in LYME REGIS, Dorset. www.lymefolk.com / 01297 442138. "The late summer festival by the sea, now in its fifth year. More than 30 acts in six venues - a whole weekend of great music and dancing on the Jurassic Coast. Line-up includes Jim Moray, Ralph McTell & Wizz Jones, Steve Knightley, The Longest Johns, Patch & the Giant, Mitchell & Vincent, Saskia Griffiths-Moore."

WESSEX FESTIVALS 2017



FARMFEST

28 and 29 July

Gilcombe Farm, BRUTON, Somerset. www.farmfestival.co.uk / 07783 393808. "Carefully crafted into one of the most unique and inclusive small-scale gatherings in the UK, Farmfest is a bubbling blend of unfettered festival frolics and humming party vigour. Where music and people set the tempo and the curious venture. Line-up includes Roots Manuva, Shobaleader One, Greg Wilson, Actress, DJ Yoda, Nightmares On Wax, Dele Sosimi, This Is The Kit, BC Camplight, Melt Yourself Down, Broken Brass Ensemble, Oliver Wilde, Beans On Toast, Dizraeli, Guts, London Astrobeat Orchestra."

SWANAGE FOLK FESTIVAL

8 - 10 September

Sandpit Field, SWANAGE. www.swanagefolkfestival.com. "A welcoming, happy and inspiring place to spend not only the festival weekend but if you have the time, a relaxing and enjoyable holiday."

BUDLEIGH SALTERTON LITERARY FESTIVAL

13 - 17 September

Locations in and around BUDLEIGH SALTERTON, Devon. www.budlifest.org.uk.

PRISTON FESTIVAL

15 - 17 September

Location: Village Green, PRISTON, near Bath, BA2 9EE. www.priston.org.uk / 07759 757114. "A friendly and relaxed celebration of live music and family-fun. Line-up includes Reg Meuross, World Government, Ange Hardy, Ant Noel & the Peabody Drakes, Cathy Judge & Johnny Francis, Frome Street Bandits, Three Cane Whale."

ENCOUNTERS

19 - 24 September

Watershed, BRISTOL. £75 / £25. www.encounters-festival.org.uk. "As Europe's leading short film festival, audiences can expect five days of the best short films from around the world alongside a series of special big screen events, a comprehensive industry programme and free public screenings for all the family. This is a chance to see films from 90 seconds to 20 minutes that will make you laugh, cry, scream and squirm."

YEOVIL SUPER SATURDAY

23 September

Locations throughout Town Centre, YEOVIL, Somerset. 10am - 4pm. 01935 382424. "Talented musicians give up their own time to busk for a chosen charity (this year School in a Bag) throughout the town centre, providing a melodic backdrop to other activities that include children's craft workshops, market stalls, performance and dance."

SOMERSET ART WEEKS: FESTIVAL

23 September - 8 October

Locations throughout SOMERSET. www.somersetartworks.org.uk. "Contemporary visual arts, new commissions, exhibitions and events in more than 100 venues across the county."

SWANAGE BLUES FESTIVAL

5 - 8 October

Locations in and around SWANAGE, Dorset. www.swanage-blues.org. "The Swanage Blues Festival brings together an amazing collection of musicians, fans and friends for a weekend of jams, open mics and headline performances that will have you coming back time after time."

SHERBORNE LITERARY FESTIVAL

11 - 15 October

Various locations in SHERBORNE, Dorset. www.sherborneliterarysociety.com.

TWO MOORS FESTIVAL

13 - 21 October

Locations across EXMOOR and DARTMOOR. www.thetwomoorsfestival.com. "The Two Moors Festival, renowned as a leading chamber music festival in the UK, attracts esteemed artists from across the globe. Each year visitors from as far as Europe, America and Canada are attracted to the beauties of Dartmoor and Exmoor to attend October's ten-day music marathon. Keen walkers find the location irresistible, excellent accommodation abounds and the famous Devon Cream Tea is to be found in every village."

ARTS BY THE SEA

14 - 21 October

Various locations, BOURNEMOUTH. www.artsbythesea. "A week-long offering of exceptional events, combining high-impact outdoor spectacles with world music, theatre shows, light art and digital installations. Our Theme for 2017 is Plastic Beach and the festival programme will spread the word about environmental issues."

YEOVIL LITERARY FESTIVAL

26 - 29 October

Octagon Theatre, YEOVIL. www.yevilliteraryfestival.co.uk.

TOTTERDOWN FRONT ROOM ART TRAIL

18 and 19 November

TOTTERDOWN, Bristol. www.frontroom.org.uk. "We are the oldest art trail in Bristol, where each year around 200 professional and amateur artists display and sell their artwork. Music, workshops and special events have transformed the arts trail into something akin to a community festival, and the streets of Totterdown team with thousands of visitors."

FARMFEST

2017

28th 2nd JUL. RUTON, SOMERSET

ROOTS MANUVA LIVE BAND
& HO ALEADER ONE SQUAREPUSHER'S JAZZ FUNK LIVE BAND PERFORMING HIS CLASSICS
GREG WILSON | **ACTRESS** DJ SET | **DJ YODA** HIP-HOP CLASSICS
NIGHTMARES ON WAX DJ SET | **DELE SOSIMI** AFROBEAT ORCHESTRA
THIS IS THE KIT | **BC CAMPLIGHT**
47SOUL | **MELT YOURSELF DOWN** DJ SET | **GUTS**
PINC | **ROKEX** | **RASSE NSEM LE** | **DI RAELI**
OLIVER WILDE FULL BAND | **BEANS ON TOAST**
LONDON ASTROBEAT ORCHESTRA
PERFORMS: TALKING HEADS

AND MANY MORE

WILD BEER CO | LOCAL CIDER | FINE & FLAVOURSOME FOODS FOR ALL
 SOUTH STREET KITCHEN | STONE BAKED PIZZA | PYRAMID ORGANIC
 SUPER SIZED GAMING | RAUCOUS QUIZZES | SIDE SNAPPING COMEDY
 WONDERFUL WORKSHOPS | YOGA & CHILLING | SING-ALONGS
 CRACKING KIDS PROGRAMMING FOR ALL AGES | DRAGONBIRD THEATRE
 THE FARMFRESH CHOIR | PODCAST LIVE | DANCE WORKSHOPS...

A MISCHIEVOUS MELTING POT OF MUSIC, ARTS, PARTY AND PEOPLE
 (C) ACK, CUT LOOSE, AND COME PL

TICKETS FOR ALL AGES | FARMFESTIVAL.CO.UK

£85 ADULT WEEKEND TICKETS | FREE CAMPING & PARKING | YEARS 12 & UNDER GO FREE

FREE ENTRY

80+ ARTISTS
40+ VENUES

OPEN FOR Art

20 May - 4 June 2017

Visit local artists by following Dorchester, Weymouth and Portland's Open for Art Trail

DOMYS bd WEYMOUTH Art

www.artwey.co.uk

SIDMOUTH FOLK WEEK 2017

AUGUST 4th - 11th

Ear to the Past • Eye on the Future

Pre-Festival Specials
Thursday 3 August
 Fisherman's Friends
 Barbara Dickson with Nick Holland
Friday 4 August
 Michael Morpurgo
 & Voices At The Door

Seth Lakeman • Show Of Hands • Oysterband
 Ralph McTell & Wizz Jones • The Spooky Men's Chorale • Dervish • Lau
 Martin Carthy & Sam Sweeney • Peatbog Faeries • Catrin Finch & Seckou Keita
 Chris Wood • Rura • Duncan Chisholm • George Monbiot & Ewan McLennan
 Josienne Clarke & Ben Walker • Yves Lambert Trio • O'Hoolley & Tidow
 Leveret • Roy Bailey • Coope Boyes & Simpson • John Kirkpatrick
 Michael Chapman • Iamar • Furrow Collective • Rachel Newton • Geoff Lakeman
 Slobhan Miller Trio • Daoliri Farrell • Jim Causley Trio • Mawkin • Ange Hardy
 Attila The Stockbroker • Sheesham and Lotus • 'Son • Chris Foster
 Crows • Keith Christmas • Token Women • Kirkophany • Steamchicken
 English String Band
 and many more
www.sidmouthfolkweek.co.uk
 Concerts • Cellidhs
 Roots Parties
 Dance Spectaculars
 Late Sessions • Children's Festival
 Huge Workshop Programme • Storytelling • Processions
 Great Value Tickets • No Booking Fees

www.sidmouthfolkweek.co.uk
 or call the box office 03395 577953

Media Sponsor **fROOTS**

FROME OPEN STUDIOS

8-16 JULY 2017

Weekends + Wed-Fri

Pick up your free copy of the Frome Open Studios trail brochure from key locations in Frome for details of each artist, their opening times and workshops.



www.fromeopenstudios.co.uk
info@fromeopenstudios.co.uk

OUTCIDER

18+

FUELLED BY CIDER

August 4th - 6th 2017 Fernhill Farm, Compton Martin, Somerset

TWO ALTERNATING STAGES OF MUSIC OVER 2 DAYS AND 3 NIGHTS
FULL BAR WITH HUGE CIDER SELECTION & LOCALLY SOURCED FOOD

GAZ BROOKFIELD & THE COMPANY OF THEVES **THE DREADNOUGHTS** **SKIMMITY HITCHERS**
THE STIFF JOINTS **GYPSY SKA ORQUESTA** **SMOKEY B@STARD**
CAPTAIN HOTKNIVES **MAID OF ACE** **MATILDA'S SCOUNDRELS** **SURFIN' TURNIPS**
IMPRINTS **THE SURFIN' BIRDS** **HYMN FOR HER** **THE DEAD MAGGIES** **LOBSTER**
I-DESTROY **THE INBREDZ** **THE MARGINAL** **BLACK WATER** **COUNTY SPACE** **CHIMP**
BIG FAT ASTRONAUTS **SPLINK** **NOSEBLEED** **THE ELECTRIC SHAKES** **DUBCLASS**
REWS **DJ DAPPER DAN** **THE LONESOME STAMPEDE** **THE WONDERSMITHS**
POKEMON LIBERATION ARMY **RUM PUPPETS** **PALOOKA 5** **CUBA LIBRE** **HOTWIRED**
ANDY TWYMAN **THE HAPPY SADS** **THE MOSQUITOES** **THE FLUX CAPACITORS** **CIDER-ONE**

TICKETS FROM £59

OUTCIDERFESTIVAL WWW.OUTCIDERFESTIVAL.COM

SCRUMPY & WESTERN

EXTRAVAGANZA

The Wurzels

SKIMPY BUTCHERS
SURFIN' TURNIPS *Inbreds*

THE SCRUMPY SWILLERS **THE SHINKICKERS**
CORKY **BILL SMARME & THE BIZNESS**
DJ & COMPERE **THE ROCK'N'ROLL TOWN CRIER** **DORSET PHIL**
WRECKERS MORRIS *and more to be announced...*

Free Camping

21st/22nd July 2017 **Fernhill Farm, Somerset**

Fri & Sat £39 **Saturday £29** **Friday £15**
 Under 14's Half Price - Limited availability
 Camping Vans & Caravans - £5 per night extra per vehicle
 Tickets and info - www.fuelledbycider.com

Featuring Fuelled By Cider's bar stocked with over 30 Ciders & Ales and locally sourced food from Fernhill Farm

Celebrating 60 years of "Scrumpy & Western"

VISUAL ARTS

'FLUX'

13 - 16 June

Chesil Building, Weymouth College, Cranford Ave, WEYMOUTH, DT4 7LQ. Tuesday - Friday 9am - 4pm. www.weymouth.ac.uk. "The end of year exhibition for the Foundation Diploma in Art & Design students of Weymouth College, showcasing an eclectic blend of disciplines across the fields of Fine Art and Visual Communication, exploring the students' independent themes and lines of creative enquiry."

DORSET MAGAZINE LANDSCAPE PAINTER OF THE YEAR: TOP 5

13 June - 29 July

Top Floor Gallery, Lighthouse, Poole's Centre for the Arts, Kingland Road, POOLE, BH15 1UG. Tuesday - Saturday 10am - 4pm. 01202 280000 / www.lighthousepoole.co.uk. "Paintings by Heather Gibbons, Max Oliver, Peter Rush, Michael Sole, and Harriet Williams."

JACK HICKS

15 June - 4 July

LT Gallery, 1 Orchard Street, WESTON-SUPER-MARE, BS23 1RG. Tuesday, Friday and Saturday 10am - 4pm, Thursday 12noon - 7pm. 07730 431726 / www.ltgallery.com. Paintings.

'THREE INTERPRETATIONS'

16 - 28 June

The Courtyard Gallery, The Town Mill, Mill Lane, LYME REGIS, DT7 3PU. 10.30am - 4.30pm. www.townmillarts.co.uk. "Vanessa Smith, Marion Sawl and Frances Dale: three artists with their own interpretation of the way in which they experience their environment."



RICHARD SERCOMBE

17 June

Sidford Methodist Church, Church Street, SIDFORD, Sidmouth, EX10 9RJ. 10.30am - 3.30pm. 07796 091151. "Come and talk photography with the artist in residence. Refreshments and competitions."

FARHAD BERAHHMAN: 'SHAHRE FARANG'

17 - 22 June

Outpost, 77 Fortuneswell, PORTLAND, DT5 1LY. Tuesday - Saturday 12noon - 5pm. www.b-side.org.uk. "For Refugee Week 2017 Iranian photographer and artist Farhad Berahman will be re-creating a 19th century travelling peep box 'Shahre Farang' for UK audiences."

FARHAD BERAHHMAN: 'UNCERTAIN'

17 June - 1 July

Outpost, 77 Fortuneswell, PORTLAND, DT5 1LY. Tuesday - Saturday 12noon - 5pm. www.b-side.org.uk. See page 3.



ELIZABETH DUNNE 'INSIDE OUT' (Machine embroidery and fabric collage)

OBSERVATORY

"Did you know that the University of Exeter undertakes a wide range of research, addressing issues affecting many of us at the moment - such as *Environment and Sustainability* or *Global Uncertainties*? These are just two of the University's research themes that artists have been engaging with to create works for a new free art exhibition based in the Forum on the University's Streatham campus. The exhibition, entitled '*Observatory: perspectives on landscape, society and spirit*' will feature work by 40 selected artists from the south west region. During the exhibition week there will be a range of free additional events, including guided walks around the unique botanical grounds, a tour of the Bill Douglas Cinema Museum and *Think Art*, a research and art related family activity day."

11 - 18 June: The Forum, University of Exeter, Stocker Road, EXETER, EX4 4SZ. 10am - 5pm. 01392 723584 / www.artsandcultureexeter.co.uk.

'AVALON DREAMS'

17 June - 1 July

Glastonbury Galleries, 10A High Street, GLASTONBURY. Tuesday - Saturday 9am - 5pm. 07919 427048. "A group exhibition by Sara Clay, Angela Watson and Sandra Brant. Oil, watercolour, acrylic and mixed media work based on the myths, legends, landscapes and dreamscapes of Avalon."

'INTERNATIONAL IMAGES FOR SCIENCE'

17 June - 29 July

Salisbury Arts Centre, Bedwin Street, SALISBURY, SP1 3UT. Tuesday - Saturday 10am - 3pm. 01722 321744 / www.salisburyartscentre.co.uk. "A touring exhibition showcasing the five winners of the Royal Photographic Society's International Images for Science competition."

'MORVILLE: A GARDEN IN ANOTHER TIME'

19 June - 8 July

Ilminster Arts Centre, The Meeting House, East Street, ILMINSTER, TA19 0AN. Monday - Friday 9.30am - 4.30pm, Saturday 9.30am - 2.30pm. 01460 55783. "Mixed media photography by Maureen Cooper."

'FLUX'

20 - 23 June

Chesil Building, Weymouth College, Cranford Ave, WEYMOUTH, DT4 7LQ. Tuesday - Friday 9am - 4pm. 01305 761100. "The Flux exhibition continues with the end of year display of the Level 3 Extended Diploma in Art, Design and Photography, A-level Combined Arts and Photography. A showcase of self-directed final projects from level 3 students."

'FIVE DORSET ARTISTS'

21 - 27 June

The Gallery, Shaftesbury Art Centre, Bell Street, SHAFTESBURY, SP7 8AR. 10am - 4pm. 01747 855243. Work by Josephine Bell, Judith Ryde, Lesley Meaker, Janet McCallum, and Jane McNeil.

'BORDERLINE'

23 June - 5 July

The Malthouse Gallery, The Town Mill, Mill Lane, LYME REGIS, DT7 3PU. 10.30am - 4.30pm. www.townmillarts.co.uk.

'CREATIVE COVERAGE'

24 and 25 June

Upwey Village Hall, Church Street, UPWEY, Weymouth, DT3 5QE. 9am - 5pm. 01305 812665 / www.creativecoverage.co.uk.

'A BOTANICAL LIFE'

28 June - 9 July

Contains Art, East Quay, WATCHET, TA23 0AQ. Wednesday - Sunday 11am - 4pm. 07799 260854. "The life and work of celebrated botanical artist, Sheila Mannes-Abbott."



CAROLINE LIDDINGTON AND LYNNE GRACE: 'COLOURS OF DORSET'

30 June - 9 July

Eype Centre for the Arts, St Peters Chapel, Mount Lane, EYPE, Bridport, DT6 6AT. 10am - 5pm. 01308 888095. "A debut exhibition of uniquely colourful and inspiring paintings by Caroline Liddington and Lynne Grace. Highly original, large and small paintings of the ocean, and intriguing interior and exterior landscapes."



The Poetry of Philip Sutton RA

Paintings & works on paper
22 April - 18 June 2017

Philip Sutton Talk: Friday 5 May 6.30pm
Tickets: £10 or £25 with dinner to follow

FRANCES HATCH AKIKO HIRAI
CLARE TRENCHARD from 24 June

SLADERS YARD

Contemporary British Art, Furniture, Craft Gallery. Licensed Café, Private Parties, Events
West Bay Bridport DT6 4EL t: 01308 459511 www.sladersyard.co.uk



Petter Southall furniture

Alan Barnes Jazz Saturday 6 May 8pm
Tickets: £15 or £30 with dinner before.

PERFORMANCE



EZIO

"In a world where would be starlets cry on talent shows and ex boy band members are considered credible, Ezio do what they do. They deliver the most exquisitely crafted and varied songs today with a skill that can only come from having toured and recorded constantly for many years, racking up countless gigs, eight studio albums and building a huge underground following. Ezio's style ranges from the highly rhythmical almost manic Latin-feeling rock to delicate dreamy ballads that are heartbreakingly honest and deeply poetic."

12 May: Corn Exchange, High East Street, DORCHESTER, DT1 1HF. 8pm. £12 / £10. 01305 266926 / www.dorchesterarts.org.uk.



'RENT'

1 - 6 May

Lighthouse, Poole's Centre for the Arts, Kingland Road, POOLE, BH15 1UG. 2.30pm and 7.45pm. 01202 280000 / www.lighthousepoole.co.uk.

"This exhilarating, landmark musical tells the thrilling story of a group of impoverished young artists struggling to survive in New York City's East Village in the thriving days of Bohemian excess."

MOR KARBASI

3 May

Salisbury Arts Centre, Bedwin Street, SALISBURY, SP1 3UT. 7.30pm. £18. 01722 321744 / www.salisburyartscentre.co.uk. "An international music night - fusing Jewish, Persian, Moroccan, Spanish and Israeli influences."

'BURTON'

3 May

Corn Exchange, High East Street, DORCHESTER, DT1 1HF. 8pm. £12 / £10. 01305 266926 / www.dorchesterarts.org.uk. "Burton vividly presents the life of the great Welsh actor in his own words, from humble beginnings to Hollywood mega-stardom."

THE FUREYS

3 May

Octagon Theatre, Hendford, YEOVIL. 7.30pm. £20.50 / £19. 01935 422884 / www.octagon-theatre.co.uk.

BOURNEMOUTH SYMPHONY ORCHESTRA:

'EXOTIC SPICE'

3 May

Lighthouse, Poole's Centre for the Arts, Kingland Road, POOLE, BH15 1UG. 7.30pm. 01202 280000 / www.lighthousepoole.co.uk.

'THE ALL STAR STAND UP TOUR'

4 May

Octagon Theatre, Hendford, YEOVIL. 7.30pm. £22. 01935 422884 / www.octagon-theatre.co.uk.

ARCHAEUS STRING QUARTET

4 May

Lighthouse, Poole's Centre for the Arts, Kingland Road, POOLE, BH15 1UG. 1.55pm. 01202 280000 / www.lighthousepoole.co.uk.

THE BIG CHRIS BARBER BAND

4 May

Lighthouse, Poole's Centre for the Arts, Kingland Road, POOLE, BH15 1UG. 7.30pm. 01202 280000 / www.lighthousepoole.co.uk.

THE MAXWELL QUARTET

4 May

St George's Church, HINTON ST GEORGE, TA17 8SE. 7.30pm. £15. 07500 532543. "Chamber music, featuring works by Ravel, Britten, and Bartok."



SHAPPI KHORSANDI

4 May

Corn Exchange, High East Street, DORCHESTER, DT1 1HF. 8pm. £15 / £13. 01305 266926 / www.dorchesterarts.org.uk. "Shappi is celebrating the fortieth anniversary of her arrival in Britain. She's reclaiming patriotism, sending a love letter to her adopted land."

THE MAXWELL QUARTET

5 May

Bridport Arts Centre, South Street, BRIDPORT, DT6 3NR. 11am. £10. 01308 424204 / www.bridport-arts.com / www.concertsinthewest.org. See 4 May.

THE MAXWELL QUARTET

5 May

Ilminster Arts Centre at The Meeting House, East Street, ILMINSTER, TA19 0AN. 8pm. £15 (£29 with pre-show supper at 7pm - must be pre-booked). 01460 55783 / www.themeetinghouse.org.uk / www.concertsinthewest.org. See 4 May.

'LIZZIE COOPER SWINGS'

5 May

Bocabar, Red Brick Building, Morland Road, GLASTONBURY, BA6 9FT. 7.30pm. £5. 01458 440558 / www.glastonbury.bocabar.co.uk. "An evening of swing, classic jazz and bossa nova."

'ALL STAR STAND UP TOUR'

5 May

Lighthouse, Poole's Centre for the Arts, Kingland Road, POOLE, BH15 1UG. 7.30pm. 01202 280000 / www.lighthousepoole.co.uk. Comedy.


BLAKE

5 May

Octagon Theatre, Hendford, YEOVIL. 7.30pm. £21.50 / £20.50. 01935 422884 / www.octagon-theatre.co.uk.

- 24 CHANNEL DDA CONSOLE
- GEAR BY NEUMANN, UA, AUDIENT ETC
- BABY GRAND
- VINTAGE GUITARS
- BBC RADIO PLAYLISTED
- 5 MILES FROM GLASTONBURY


Take a tour inside at
SPACEWOLF.CO.UK



RECORDING STUDIO

SPACEWOLF

SOMERSET ENGLAND



Recent clients include

THE PINEAPPLE THIEF, THE CHESTERFIELDS, NICK PARKER, MY NAME IS IAN...

PERFORMANCE

DENYS BAPTISTE

5 May

Lighthouse, Poole's Centre for the Arts, Kingland Road, POOLE, BH15 1UG. 8pm. 01202 280000 / www.lighthousepoole.co.uk. "Denys Baptiste revisits many of John Coltrane's compositions from 1963 to 1967, a classic era which included 'A Love Supreme'."

'THANK ABBA FOR THE MUSIC'

6 May

Octagon Theatre, Hendford, YEOVIL. 7.30pm. £24.50. 01935 422884 / www.octagon-theatre.co.uk.



ALAN BARNES, CRAIG MILVERTON, ANDY CROWDY

6 May

Sladers Yard, West Bay Road, WEST BAY, Bridport, DT6 4EL. 8pm. £15 (£30 with dinner at 6.30pm). 01308 459511 / www.sladersyard.co.uk. "Alan Barnes has the unique gift for combining modern sophistication with the charm of the jazz tradition. Internationally acclaimed and multi award-winning, he plays alto sax, baritone sax and clarinet softly and mesmerisingly to fit the intimate atmosphere of Sladers Yard. He will be joined by Andy Crowdy, a well known and highly rated bass player, alongside Craig Milverton, one of Britain's top jazz pianists."

THE MAXWELL QUARTET

6 May

St Michael's, Haddon Road, SHUTE, Devon, EX13 7QR. 7.30pm. £15. 01297 33203. www.concertsinthewest.org. See 4 May.

PALOOKA 5 + THE ELECTRIC SHAKES + LAST ONE HOME

6 May

The Winchester Arms, Castle Green, TAUNTON, TA1 4AD. £8 / £6. 01823 272488 / www.fuelledbycider.com.

GIRLS ONLY JAZZ ORCHESTRA

7 May

Salisbury Arts Centre, Bedwin Street, SALISBURY, SP1 3UT. 12noon. £6 / £5. 01722 321744 / www.salisburyartscentre.co.uk. "Swing classics and fresh new hits, this group will blow you away with its Big Band sound."



FLYING FOLK

"Folk evening featuring performances by several different folk acts under one roof: Kitty Macfarlane (above), Greg Hancock, Pete Aves. MC Jemima Farey."

12 May: Ilminster Arts Centre, The Meeting House, East Street, ILMINSTER, TA19 0AN. 8pm. £10. 01460 54973 / www.themeetinghouse.org.uk.



KOKORO

7 May

Corn Exchange, High East Street, DORCHESTER, DT1 1HF. 2.30pm. £14 / £12 / £5. 01305 266926 / www.dorchesterarts.org.uk. "Kokoro, the new music ensemble of the Bournemouth Symphony Orchestra, return to the Corn Exchange with a special performance featuring the premiere of a new work by Hywel Davies, inspired by the county of Dorset."



SNARKY PUPPY

7 May

Lighthouse, Poole's Centre for the Arts, Kingland Road, POOLE, BH15 1UG. 7.30pm. 01202 280000 / www.lighthousepoole.co.uk. "Raw funk meets sensitive dynamics, lyrical melodicism, lush harmony and soulful simplicity."

BSO: 'DORSET RUSTIES 2017'

7 May

Lighthouse, Poole's Centre for the Arts, Kingland Road, POOLE, BH15 1UG. 7.30pm. 01202 280000 / www.lighthousepoole.co.uk. "Amateur musicians perform alongside the full Bournemouth Symphony Orchestra."

BIRMINGHAM ROYAL BALLET: TRIPLE BILL

9 and 10 May

Lighthouse, Poole's Centre for the Arts, Kingland Road, POOLE, BH15 1UG. 7.30pm (Wednesday matinee 2.30pm). 01202 280000. "Sparkling triple bill."

'HYSTERIA'

9 and 10 May

Octagon Theatre, Hendford, YEOVIL. 7.30pm. £16 / £14.50. 01935 422884 / www.octagon-theatre.co.uk.

BIRMINGHAM ROYAL BALLET: 'WATCH CLASS'

10 May

Lighthouse, Poole's Centre for the Arts, Kingland Road, POOLE, BH15 1UG. 11.45am. 01202 280000 / www.lighthousepoole.co.uk.

BOURNEMOUTH SYMPHONY ORCHESTRA: 'KNIGHTS AND NOBILITY'

10 May

Lighthouse, Poole's Centre for the Arts, Kingland Road, POOLE, BH15 1UG. 7.30pm. 01202 280000 / www.lighthousepoole.co.uk.

STATE OF EMERGENCY: 'WHERE IS HOME?'

10 May

Salisbury Arts Centre, Bedwin Street, SALISBURY, SP1 3UT. 8pm. £12 / £10. 01722 321744 / www.salisburyartscentre.co.uk. "A new twist on a 1000 year old fable presenting great music and dance from South Africa."

BSO: 'KNIGHTS AND NOBILITY'

11 May

Colston Hall, Colston Street, BRISTOL, BS1 5AR. 7.30pm. £36 / £18. 0844 887 1500.

'THE SIMON AND GARFUNKEL STORY'

11 May

Octagon Theatre, Hendford, YEOVIL. 7.30pm. £20 / £18.50. 01935 422884 / www.octagon-theatre.co.uk.

MISBEHAVIN'

12 May

Salisbury Arts Centre, Bedwin Street, SALISBURY, SP1 3UT. 8pm. £12 / £10. 01722 321744 / www.salisburyartscentre.co.uk. "Breathless vocals, fiery clarinets and earthy rhythms collide as Misbehavin' present an evening of music inspired by the elements."

STATE OF EMERGENCY: 'WHERE IS HOME?'

12 May

Lighthouse, Poole's Centre for the Arts, Kingland Road, POOLE, BH15 1UG. 7.45pm. 01202 280000. See 10 May.

SISATA: 'OTHELLO'

12 and 13 May

Lighthouse, Poole's Centre for the Arts, Kingland Road, POOLE, BH15 1UG. 8pm. 01202 280000 / www.lighthousepoole.co.uk. "A bold, bright and brilliant explosion of a performance, giving you a feast for all your senses."

A MONTHLY CELEBRATION OF PEOPLE, PLACE AND PURVEYOR



www.sherbornetimes.co.uk

PERFORMANCE

JO BURT

13 May
Caryford Community Hall, Maggs Lane, CASTLE CARY, BA7 7JJ. 6.45pm. £12.
www.caryfordhall.co.uk.

GLASTONBURY FM SINGER & SONGWRITING COMPETITION FINAL

13 May
Bocabar, Red Brick Building, Morland Road, GLASTONBURY, BA6 9FT. 7pm. £3. 01458 440558 / www.glastonbury.bocabar.co.uk.

THE WATKINS & SWARBRICK BAND

13 May
Village Hall, Church Street, BURTON BRADSTOCK, DT6 4QS. 7.30pm. 01305 837299.
"Uniquely wide-ranging acoustic music, showcasing the extraordinary musicianship of Simon Swarbrick and the 3-part vocal harmonies of Ken, Lucy and Angela Watkins."

'SOME GUYS HAVE ALL THE LUCK'

13 May
Octagon Theatre, Hendford, YEOVIL. 7.30pm. £22.50 / £21. www.octagon-theatre.co.uk.

CORSLEY FESTIVAL CHOIR

14 May
St Margaret's Church, CORSLEY, BA12 7QE. 7pm. £12.50 / £5. 01373 832418. *"A May miscellany."*

THE SEARCHERS

14 May
Octagon Theatre, Hendford, YEOVIL. 7.30pm. £22. 01935 422884.

LIVING SPIT: 'TORTOISE VS HARE'

16 May
Village Hall, WINFRITH, DT2 8JR. 7.30pm. £9 / £7. 01305 852117 / www.artsreach.co.uk.

RUBY WAX: 'FRAZZLED - A GUIDE TO MINDFULNESS'

16 May
Lighthouse, Poole's Centre for the Arts, Kingland Road, POOLE, BH15 1UG. 7.45pm. 01202 280000 / www.lighthousepoole.co.uk.

LIVING SPIT: 'TORTOISE VS HARE'

17 May
Village Hall, BROADOAK, DT6 5NL. 7.30pm. £9 / £7. 01308 424922 / www.artsreach.co.uk.



FROZEN LIGHT: 'HOME'

17 and 18 May
Corn Exchange, High East Street, DORCHESTER, DT1 1HF. Wednesday 11am and 1.30pm, Thursday 10.30pm. www.dorchesterarts.org.uk.
"A tale of unexpected friendship between Scarlet and Olive, who must learn how to survive and create a future together in an environment that is full of surprises."



FAR FROM THE MADDING CROWD

"Hotbuckle Productions now bring Hardy's romance to his home town with live music and their trademark ensemble style. As three very different suitors compete for her heart, spirited, independent Bathsheba Everdene must choose between them. Will she choose to marry for passion, for obligation or for true love and companionship? Or will she value her independence and not marry at all?"

13 and 14 May: Corn Exchange, High East Street, DORCHESTER, DT1 1HF. Saturday 8pm, Sunday 2.30pm. £12 / £10 / £5. 01305 266926 / www.dorchesterarts.org.uk.

LIVING SPIT: 'TORTOISE VS HARE'

18 May
Village Hall, HALSTOCK, BA22 9SG. 7.30pm. £9 / £7. 01935 891744 / www.artsreach.co.uk.

'THE ROY ORBISON STORY'

18 May
Octagon Theatre, Hendford, YEOVIL. 7.30pm. £21. www.octagon-theatre.co.uk.

KATE RUSBY

19 May
Octagon Theatre, Hendford, YEOVIL. 7.30pm. £23 / £17. 01935 422884 / www.octagon-theatre.co.uk / www.katerusby.com. *"Of all the stars in folk music's wondrous firmament few shine as brightly as Yorkshire's Kate Rusby. A career which spans across 25 years in music showcases her as one of the finest interpreters of traditional folk songs and one of our most emotive original songwriters. Forever proud to call herself a folk singer, Kate's beautiful, expressive vocals never fail to connect the emotional heart of a song to that of her audience. The crossover appeal Kate enjoys is unprecedented for a folk singer and has been achieved without resort to compromise. Rusby's wondrous singing and hugely engaging Yorkshire wit and the intuitive support of the band ensure that audiences will be treated to a truly remarkable and unforgettable concert experience."*

CREEDS CROSS

19 May
Salisbury Arts Centre, Bedwin Street, SALISBURY, SP1 3UT. 7.30pm. £19.50. 01722 321744 / www.salisburyartscentre.co.uk. *"A stunningly exciting evening of music, capturing the origins of The Celtic Journey as it spread across the world."*

LIVING SPIT: 'TORTOISE VS HARE'

19 May
Cecil Memorial Hall, CRANBORNE, BH21 5QB. 7.30pm. £10 / £6. 01725 517500 / www.artsreach.co.uk.



THE LOWEST PAIR

19 May
Thelma Hulbert Gallery, Dowell Street, HONITON, EX14 1LX. 6.30pm. Free entry. 01404 45006 / www.thelowestpair.com. *"With their bare-bones instrumentation and country-inspired, heartstring-tugging narratives, The Lowest Pair might be one of the best under-the-radar Americana duos today."*

4 COLOURS
to make a
THOUSAND
SHADES

#COLOURINGYOURFUTURE

S&G
STEPHENS & GEORGE
PRINT GROUP

WWW.STEPHENSANDGEORGE.CO.UK
01685 388888 | SALES@STEPHENSANDGEORGE.CO.UK
GOAT MILL ROAD | DOWLAIS | MERTHYR TYDFIL | CF48 3TD
FOLLOW US ON TWITTER @SandGPrintGroup

PERFORMANCE



PHIL BEER BAND

"A unique blend of 'folk and roll' trawled from Phil's treasure trove of traditional tunes and American country rock."

18 May: Salisbury Arts Centre, Bedwin Street, SALISBURY, SP1 3UT. 8pm. £19 / £17. 01722 321744 / www.salisburyartscentre.co.uk.

25 May: Corn Exchange, High East Street, DORCHESTER, DT1 1HF. £20 / £18. 01305 266926 / www.dorchesterarts.org.uk.

PHILIP CLOUTS AND RON PHELAN

19 May
Tincton Gallery, The Old School House,
TINCLETON, near Dorchester, DT2 8QR. 7.30pm.
£12. 01305 848909 /
www.tinctongallery.com. "A special jazz
treat."



REMI HARRIS TRIO

19 May
Ilminster Arts Centre, The Meeting House, East
Street, ILMINSTER, TA19 0AN. 8pm. £16 (£30
with pre-show supper at 7pm - must be pre-
booked). 01460 54973. "Django influenced
guitar from virtuoso player Remi Harris, with
special guest John Hallam on clarinet."

DIZ & THE DOORMEN + DJ THE GRINGO

20 May
Evershot Village Hall, The Common, EVERSNOT,
DT2 0JY. 7.30pm. £10. 01935 83580.

"Barrelhouse blues and boogie woogie New
Orleans style from the maestro and his 5 piece
combo, featuring Jamaican conga legend Tony
Groco Uter."

'LET'S HANG ON'

20 May
Octagon Theatre, Hendford, YEOVIL. 7.30pm.
£23.50. 01935 422884 / www.octagon-theatre.co.uk.

'CINDERELLA'

21 May
Octagon Theatre, Hendford, YEOVIL. 6pm. £16 /
£13. www.octagon-theatre.co.uk.

UKULELE OPERA: 'FLEA!'

23 - 27 May
Electric Palace, 35 South Street, BRIDPORT, DT6
3NY. Tuesday and Wednesday 12noon, Thursday
6.30pm, Saturday 12.30 and 6.30pm. £10.50 /
£12 / £9 / £8.50 / £6.50. 01308 428354 /
www.ukuleleopera.org.uk /
www.electricpalace.org.uk. "This circus-themed
community production has cast of over 100
actors, singers, musicians and performers,
including a few dogs. It's a story of good versus
evil and little versus large."

BALLET CENTRAL

24 May
Octagon Theatre, Hendford, YEOVIL. 7.30pm.
£17 / £15.50 / £11. 01935 422884 /
www.octagon-theatre.co.uk.



'I AM BEAST - SPARKLE AND DARK'

24 May
Corn Exchange, High East Street, DORCHESTER,
DT1 1HF. £12 / £10 / £5. 01305 266926 /
www.dorchesterarts.org.uk.



'GANGSTA GRANNY'

24 - 28 May
Lighthouse, Poole's Centre for the Arts, Kingland
Road, POOLE, BH15 1UG. 10.30 and 11am, 2.30
and 7pm. 01202 280000 /
www.lighthousepoole.co.uk.

ENDELLION QUARTET AND GUY JOHNSTON

25 May
Octagon Theatre, Hendford, YEOVIL. 7.30pm.
£19.50 / £18 / £16.50. 01935 422884 /
www.octagon-theatre.co.uk.

MATT FORDE

26 May
Corn Exchange, High East Street, DORCHESTER,
DT1 1HF. 8pm. £15 / £13 / £5. 01305 266926 /
www.dorchesterarts.org.uk. "Following the UK's
most important referendum until the next one,
host of hit show 'Unspun' Matt Forde celebrates
why it's great / awful that we're in / out of the
EU / UK / NATO / whatever the hell happens
next."

PASHA KOVALEV

26 May
Octagon Theatre, Hendford, YEOVIL. 7.30pm.
£26 / £25. www.octagon-theatre.co.uk.

Lighthouse

POOLE'S CENTRE FOR THE ARTS



Thu 1 June

Kathryn Roberts and Sean Lakeman

Winners of the BBC Radio 2 Folk Award
2016 and two of the Folk scene's most
accomplished performers. Their passion
combined with an electric repertoire,
ensures a rare treat for any listener.

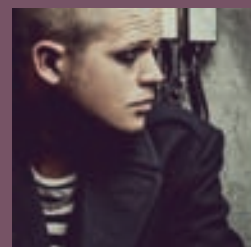


Thu 15 - Sat 17 June

All Or Nothing

THE MOD MUSICAL

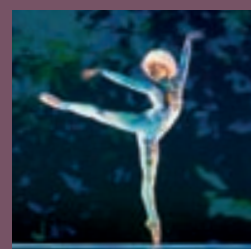
A trans-generational musical celebrating
the iconic Mod band, THE SMALL FACES.
Including hits; 'Whatcha Gonna Do About
It', 'All Or Nothing', 'Lazy Sunday' and
'Itchycoo Park'.



Fri 16 June

Luke Wright

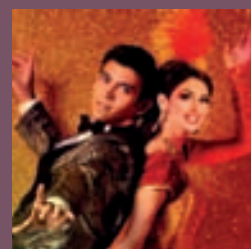
Luke Wright returns to his roots
performing poems from his new book, The
Toll. Wright's poetry ranges from the laugh
out loud funny to the tear-inducingly
poignant and back again.



Thu 22 June

A Midsummer Night's Dream

Award Winning Ballet Cymru present
Shakespeare's most magical play. Featuring
vibrant classical choreography, radiant
costumes and sets, video projection and
Mendelssohn's joyous music.



Thu 29 June - Sat 1 July

Bring On The Bollywood

A romantic musical comedy with a
fantastic soundtrack and high energy
dance. Inspired by real stories and
influenced by classical literature along
with contemporary Bollywood romances.



Fri 14 July

Sarah Jane Morris and Antonio Forcione

Promoting the launch of their collaborative
album: Compared to What. This duo have
each been compared to Janice Joplin
and Tom Waits (vocally) Jimi Hendrix
(instrumentally) and Django Reinhardt.

love Lighthouse
your support is our future

Get involved at
lovelighthouse.co.uk

01202 280000
www.lighthousepoole.co.uk



WESTLANDS YEOVIL

ARE YOU READY TO REDISCOVER WESTLANDS?

Re-opening at the end of March, Somerset's newest entertainment venue promises a bold new programme of events and entertainment. You'll discover plenty of performances, festivals and activities to attend.

Visit our website for more information:

www.westlandsyevovil.co.uk

WE ARE PLEASED TO INVITE YOU TO AN
'OPEN DAY' ON SATURDAY 13TH MAY.

Save the date and join us to see the refurbished spaces in the complex and all the different facilities, activities and groups on site.



A NEW PLACE TO MEET, GROW YOUR
BUSINESS. HAVE FUN AND BE ENTERTAINED.

[/WestlandsYeovil](https://www.facebook.com/WestlandsYeovil) [@WestlandsYeovil](https://twitter.com/WestlandsYeovil)

www.westlandsyevovil.co.uk Westbourne Close | Yeovil | Somerset | BA20 2DD

PERFORMANCE



HOLY MOLY & THE CRACKERS

"An exciting and visceral blend of rock, pop, folk, blues, balkan, klezmer, ska and reggae."

13 May: Memorial Hall, STURMINSTER MARSHALL, BH21 4BQ. 7.30pm. £9 / £6. 01258 857447.

15 May: Village Hall, BUCKLAND NEWTON, DT2 7BZ. 7.30pm. £9 / £6. 01300 345455. www.artsreach.co.uk

DINOSAUR

26 May
Lighthouse, Poole's Centre for the Arts, Kingland Road, POOLE, BH15 1UG. 8pm. 01202 280000 / www.lighthousepoole.co.uk. "Laura Jurd's newly-named band Dinosaur is a group of extraordinary young musicians who have been playing together for six years and share improvisational skills, musical influences ranging from jazz to folk to rock music with freshness and inspiration."

'SIMON & GARFUNKEL THROUGH THE YEARS'

26 May
Lighthouse, Poole's Centre for the Arts, Kingland Road, POOLE, BH15 1UG. 7.30pm. 01202 280000 / www.lighthousepoole.co.uk.

NATHAN CARTER

26 May
Westlands, Westbourne Close, YEOVIL, BA20 2DD. 7.30pm. £27.50. 01935 422884 / www.westlandsyevovil.co.uk.

DAVE NEWTON TRIO

26 May
Ilminster Arts Centre, The Meeting House, East Street, ILMINSTER, TA19 0AN. 8pm. £18 (£32 with pre-show supper at 7pm - must be pre-booked). 01460 54973. "Dynamic modern jazz from an array of multi-award-winning musicians. Sparks will fly!"



THE FOGHORN STRINGBAND

27 May
Village Hall, CORFE CASTLE, BH20 5EE. 7.30pm. £10 / £7. 07590 352219 / www.artsreach.co.uk. "From their origins in Portland Oregon's vibrant underground roots music scene, Foghorn have spread the old-time string band gospel all over the world. Old-time square dance tunes rub shoulders with Cajun waltzes, vintage honky-tonk songs and bluegrass picking, creating a bubbling and intoxicating musical brew."

HENNING WEHN

27 May
Westlands, Westbourne Close, YEOVIL, BA20 2DD. 8pm. £19.50. 01935 422884.

BSO BENEVOLENT FUND CONCERT

28 May
Lighthouse, Poole's Centre for the Arts, Kingland Road, POOLE, BH15 1UG. 3pm. 01202 280000.

THE FOGHORN STRINGBAND

28 May
Village Hall, PORTESHAM, DT6 4NS. 7.30pm. £10 / £7. 01305 871925.



'THE THREE MUSKETEERS'

29 May
The Brewhouse, TAUNTON. 1.30pm. 01823 283244 / www.thebrewhouse.net. "Fresh from Justin's House and Spot Bots, join the CBeebies' favourites as they swashbuckle their way across the UK in a hilarious new slapstick adventure of chivalry, swordplay and suddenly falling over. The seventeenth century has never been so silly!"

MOYA BRENNAN

31 May
Octagon Theatre, Hendford, YEOVIL. 7.30pm. £22 / £20.50. 01935 422884 / www.octagon-theatre.co.uk. "The voice of Clannad."



KATHRYN ROBERTS & SEAN LAKEMAN

1 June
Lighthouse, Poole's Centre for the Arts, Kingland Road, POOLE, BH15 1UG. 8pm. 01202 280000.

DorchesterARTS

Summer highlights at the Corn Exchange



For full event listings, visit our website
Dorchester Arts, The Corn Exchange, High East Street, Dorchester DT1 1HF

01305 266926 dorchesterarts.org.uk

New
brochure
out now

Involved
Inspired
Entertainment

PERFORMANCE

JUAN MARTÍN: 'ARTE FLAMENCO PURO'

1 June

Corn Exchange, High East Street, DORCHESTER, DT1 1HF. 8pm. £15 / £13. 01305 266926 / www.dorchesterarts.org.uk. "A new flamenco programme of music, song and dance direct from Spain."

RUTH ROYALL JAZZ TRIO

2 June

Bocabar, Red Brick Building, Morland Road, GLASTONBURY, BA6 9FT. 7.30pm. £5. 01458 440558 / www.glastonbury.bocabar.co.uk.

"Ruth mixes equal doses of jazz, soul and R'n'B. Her voice sizzles and pops with raw sensuality."

BRIAN CONLEY

2 June

Westlands, Westbourne Close, YEOVIL, BA20 2DD. 7.30pm. £24. 01935 422884 / www.westlandseyovil.co.uk.

SIMPLE MINDS

2 June

Lighthouse, Poole's Centre for the Arts, Kingland Road, POOLE, BH15 1UG. 7.30pm. 01202 280000 / www.lighthousepoole.co.uk.



'THE CONSENT OF SPEAKING HARMONY'

2 June

Corn Exchange, High East Street, DORCHESTER, DT1 1HF. 8pm. £14 / £12. 01305 266926 / www.dorchesterarts.org.uk. "An intimate evening based around the music of John Dowland, in the company of the UK's foremost early music soprano, Dame Emma Kirkby, and a group of talented young singers and musicians, including the hugely talented lutenist Sam Brown."

CROFT & PEARCE

3 June

Lighthouse, Poole's Centre for the Arts, Kingland Road, POOLE, BH15 1UG. 7.45pm. 01202 280000 / www.lighthousepoole.co.uk. Comedy.

SEAN LOCK: 'KEEP IT TIGHT'

3 June

Lighthouse, Poole's Centre for the Arts, Kingland Road, POOLE, BH15 1UG. 8pm. 01202 280000 / www.lighthousepoole.co.uk.

WEYMOUTH CHORAL SOCIETY AND BARCLAYS HOUSE CHOIR: 'ELIJAH'

3 June

Wimbome Minster, WIMBORNE. 7.30pm. £12 / £10. 07712 135150. "A performance of Mendelssohn's oratorio in the beautiful setting of Wimbome Minster."



GOAN DOGS + DESIGN

"Goan Dogs are five human being musicians from Bristol supplying skin-tight crafted grooves, carried away on a luscious undertow of shamanic rhythms and six-string beatitude. Shambolic, heartfelt, ludicrous pop."

20 May: Bocabar, Red Brick Building, Morland Road, Glastonbury, BA6 9FT. 8pm. £5. 01458 440558 / www.glastonbury.bocabar.co.uk.

'T. REXTASY'

3 June

Octagon Theatre, Hendford, YEOVIL. 7.30pm. £20.50 / £19. www.octagon-theatre.co.uk.

'WAITING FOR GOD'

5 - 10 June

Lighthouse, Poole's Centre for the Arts, Kingland Road, POOLE, BH15 1UG. 7.45pm (Wednesday and Saturday matinees 2.30pm). 01202 280000 / www.lighthousepoole.co.uk.

THE MANFREDS: 'MAKIN' TRACKS'

7 June

Octagon Theatre, Hendford, YEOVIL. 7.30pm. £22. www.octagon-theatre.co.uk.

'PRESCRIPTION FOR MURDER'

8 and 9 June

Corn Exchange, High East Street, DORCHESTER, DT1 1HF. 8pm. £12 / £10. 01305 266926 / www.dorchesterarts.org.uk. "Mayhem, murder and mystery... Join the Somerleigh Players in the depths of darkest Devon in this humorous Norman Robbins play, full of twists and turns."

DAVE NEWTON TRIO

9 June

Ilminster Arts Centre, The Meeting House, East Street, ILMINSTER, TA19 0AN. 8pm. £14 (£28 with pre-show supper at 7pm - must be booked in advance). 01460 54973. Jazz.

'THE LIGHTHOUSE KEEPER'S LUNCH'

10 June

Lighthouse, Poole's Centre for the Arts, Kingland Road, POOLE, BH15 1UG. 11am and 2pm. 01202 280000 / www.lighthousepoole.co.uk.



NINEBARROW

10 June

Village Hall, Church Road, KINGTON LANGLEY, Chippenham, SN15 5NJ. 7.30pm. £8 / £7 / £5. 01249 750362. "Ninebarrow are a multi-award winning folk duo, who are impressing audiences across the country with their innovative and captivating take on the folk tradition."

BROADSTONE COMMUNITY BAND

10 June

Lighthouse, Poole's Centre for the Arts, Kingland Road, POOLE, BH15 1UG. 7.30pm. 01202 280000 / www.lighthousepoole.co.uk.

CLAIRE TEAL AND HER HOLLYWOOD ORCHESTRA

11 June

Lighthouse, Poole's Centre for the Arts, Kingland Road, POOLE, BH15 1UG. 7.30pm. 01202 280000 / www.lighthousepoole.co.uk. "Award-winning singer Clare Teal presents her family show with a rich, jazz infused repertoire that explores timeless classics penned by the legendary musical storytellers of the last 100 years."

JAZZ DANCE COMPANY: 'DYNASTIES: THE SANDS OF TIME'

13 June

Octagon Theatre, Hendford, YEOVIL. 7.30pm. £14 / £13 / £10. 01935 422884 / www.octagon-theatre.co.uk.

MARTYN JOSEPH

15 June

Village Hall, Cowleaze Road, BROADMAYNE, Dorchester, DT2 8EW. 7.30pm. £16. 07443 659912 / www.martynjoseph.com. "Songs of lyrical intelligence."

'AN EVENING OF BLUES AND BOOGIE'

15 June

Lighthouse, Poole's Centre for the Arts, Kingland Road, POOLE, BH15 1UG. 7.30pm. 01202 280000 / www.lighthousepoole.co.uk.

DESIGN

SATURDAY 20 MAY: BOCABAR, GLASTONBURY
with GOAN DOGS

SATURDAY 17 JUNE: THE PLOUGH, TAUNTON
with PALOOKA 5

SUNDAY 9 JULY: SUNSET RIDGE, HAM HILL

SATURDAY 15 JULY: BROADCIDER FESTIVAL

SATURDAY 29 JULY: CASTLE GREEN, TAUNTON

FRIDAY 11 AUGUST: BRIDPORT ARTS CENTRE



100

NEXT ISSUE!



COAL

"A riveting dance theatre show which takes an nostalgic look at the hard hitting realities of life at the coal face. Bringing together Clarke's striking physical language performed by a company of 7 stunning professional dancers, a local community cast of women and a live brass band, this is an emotional, moving and ever-relevant exploration of community, solidarity and survival."

31 May: Lighthouse, Poole's Centre for the Arts, Kingland Road, POOLE, BH15 1UG. 7.45pm. 01202 280000 / www.lighthousepoole.co.uk.

'ONCE UPON A PRESTON FAIRY TALE'

15 June
Octagon Theatre, Hendford, YEOVIL. 6.30pm. £6 / £5. www.octagon-theatre.co.uk.



'ALL OR NOTHING: THE MOD MUSICAL'

15 - 17 June
Lighthouse, Poole's Centre for the Arts, Kingland Road, POOLE, BH15 1UG. 7.45pm (Saturday matinee 2.30pm). 01202 280000. "A trans-generational musical experience celebrating the unique sound of the iconic mod band The Small Faces."



LUKE WRIGHT

16 June
Lighthouse, Poole's Centre for the Arts, Kingland Road, POOLE, BH15 1UG. 8pm. 01202 280000 / www.lighthousepoole.co.uk. "One of the UK's favourite and most accessible poets returns to his roots, performing poems from his new book 'The Toll'."

'THAT'LL BE THE DAY'

16 June
Octagon Theatre, Hendford, YEOVIL. 7.30pm. £26.50 / £24.50. 01935 422884 / www.octagon-theatre.co.uk.

POP-UP OPERA: 'IL MATRIMONIO SEGRETO (THE SECRET MARRIAGE)'

16 June
Village Hall, DURWESTON, DT11 0QA. 7.30pm. £15 / £8. 01258 488883. "One of the most successful comic operas of the late eighteenth century, Cimarosa's 'Il Matrimonio Segreto' is about following your heart and makes for a perfect summer opera."

DUNCAN HONEYBOURNE AND KATHARINE LAM

16 and 17 June
Tincleton Gallery, The Old School House, TINCLETON, near Dorchester, DT2 8QR. 7.30pm. £12. 01305 848909. "Local piano hero Duncan Honeybourne joins Katharine Lam from Birmingham Conservatoire for a stunning piano duet."

TOMMASO STARACE QUARTET

17 June
Lighthouse, Poole's Centre for the Arts, Kingland Road, POOLE, BH15 1UG. 12.30pm. 01202 280000 / www.lighthousepoole.co.uk.

MONICA VASCONCELOS

17 June
Lighthouse, Poole's Centre for the Arts, Kingland Road, POOLE, BH15 1UG. 2.30pm. 01202 280000 / www.lighthousepoole.co.uk. "Brazilian bossa nova."

REGINALD D HUNTER

17 June
Octagon Theatre, Hendford, YEOVIL. 8pm. £24. 01935 422884 / www.octagon-theatre.co.uk.

THOKOZILE COLLECTIVE

17 June
Lighthouse, Poole's Centre for the Arts, Kingland Road, POOLE, BH15 1UG. 6.30pm. 01202 280000 / www.lighthousepoole.co.uk. "South African jazz sextet."

OMAR PUENTE JAZZ SEXTET

17 June
Lighthouse, Poole's Centre for the Arts, Kingland Road, POOLE, BH15 1UG. 7pm. 01202 280000.

SOLANA

17 June
Bocabar, Red Brick Building, Morland Road, GLASTONBURY, BA6 9FT. 7.30pm. 01458 440558 / www.glastonbury.bocabar.co.uk. "Solana play a unique blend of instrumental folk-world music and have been enthusing listeners throughout Europe with their rhythmically complex and harmonically rich sound since their formation in Valencia in 2012."

THE SOOTHSAYERS

17 June
Lighthouse, Poole's Centre for the Arts, Kingland Road, POOLE, BH15 1UG. 9pm. 01202 280000 / www.lighthousepoole.co.uk. "Hugely popular Afro Caribbean 7 piece."

'THE MEMORY OF WATER'

18 - 20 May
The Exchange, STURMINSTER NEWTON, DT10 1FH. 7.30pm. 01258 475137. "Heart-warming, troubling, sad, and uncontrollably funny."

'THAT'LL BE THE DAY'

21 June
Lighthouse, Poole's Centre for the Arts, Kingland Road, POOLE, BH15 1UG. 7.45pm. 01202 280000 / www.lighthousepoole.co.uk.

BALLET CYMRU: 'A MIDSUMMER NIGHT'S DREAM'

22 June
Lighthouse, Poole's Centre for the Arts, Kingland Road, POOLE, BH15 1UG. 7.45pm. 01202 280000 / www.lighthousepoole.co.uk.

'OCTOPUS'

22 June
Lighthouse, Poole's Centre for the Arts, Kingland Road, POOLE, BH15 1UG. 8pm. 01202 280000. "A post-Brexit satire that takes an unflinching look at identity politics, what it's like to be treated as a foreigner in your own land... and the power of punk."

Every job starts with a blank canvas.

At AztecMedia we have over 25 years experience in design and marketing. So whether you're an independent artist needing a website or a large venue looking for promotional material, everything we do is tailored to suit who you are.

aztecmedia
born to be creative®

01935 477 073 • AztecMedia.eu



PERFORMANCE



JAY PHELPS QUARTET

"Contemporary jazz."

16 June: Corn Exchange, High East Street, DORCHESTER, DT1 1HF. 8pm. £12 / £10 / £5. 01305 266926 / www.dorchesterarts.org.uk.

'BUGSY MALONE'

22 - 24 June

Octagon Theatre, Hendford, YEOVIL. 7.30pm (Saturday matinee 2pm). £16 / £14. 01935 422884 / www.octagon-theatre.co.uk.

CRAIG MILVERTON TRIO

23 June

Ilminster Arts Centre, The Meeting House, East Street, ILMINSTER, TA19 0AN. 8pm. £16 (£30 with pre-show supper at 7pm - must be pre-booked). 01460 54973 / www.themeetinghouse.org.uk. "Modern jazz."

RICHARD DIGANCE

24 June

Salisbury Arts Centre, Bedwin Street, SALISBURY, SP1 3UT. 7.30pm. £18.50 / £17.50. 01722 321744 / www.salisburyartscentre.co.uk. "An evening of music with Richard Digance."

BRISTOL OLD VIC THEATRE SCHOOL: 'UNDER MILK WOOD'

24 June

Village Hall, FRAMPTON, DT2 9NF. 7.30pm. £10 / £8. 01300 320607 / www.artsreach.co.uk. "With its canvas of nonsense gossip, feuds, affairs, fights, frauds and practical jokes, this beautiful, bawdy, affectionate, reckless and deeply original play pulses with the vitality and relish of real life characters re-living their dreams and desires."

'TWELFTH NIGHT'

25 June

Maumbury Rings, DORCHESTER. 6pm. £12 / £10. 01305 266926 / www.dorchesterarts.org.uk. "Hopeless romantics, drunken knights, a pompous steward and fools galore abound in one of Mr. William Shakespeare's most celebrated comedies. Sure to delight family audiences from age 6 to 96, this is an ideal choice for an outdoor theatrical event. Bring a chair!"

BRISTOL OLD VIC THEATRE SCHOOL: 'UNDER MILK WOOD'

25 June

The Exchange, STURMINSTER NEWTON, DT10 1FH. 7.30pm. £10 / £8. 01258 475137 / www.artsreach.co.uk. See 24 June.

'RHYTHM OF THE DANCE'

27 June

Octagon Theatre, Hendford, YEOVIL. 7.30pm. £24 / £22.50. 01935 422884 / www.octagon-theatre.co.uk.

'AN EVENING WITH DARCEY BUSSELL'

27 June

Westlands, Westbourne Close, YEOVIL, BA20 2DD. 7.30pm. £20 / £18.50. 01935 422884 / www.westlandsyeovil.co.uk. "Official opening event for Yeovil's newest venue."

LAURENCE CLARK AND STEVE DAY

28 June

Salisbury Arts Centre, Bedwin Street, SALISBURY, SP1 3UT. 7.30pm. £14 / £12. 01722 321744. "A comedy double bill featuring Laurence Clark and Steve Day."



STOMPIN' DAVE ALLEN

29 June

Corn Exchange, High East Street, DORCHESTER, DT1 1HF. 8pm. £10 / £8. 01305 266926 / www.dorchesterarts.org.uk. "Master of the guitar, banjo, fiddle, harmonica and piano Stompin' Dave is perhaps best-known for his old-time, flatfooting style of tap-dancing - hence his stage name."

'BRING ON THE HOLLYWOOD'

29 June - 1 July

Lighthouse, Poole's Centre for the Arts, Kingland Road, POOLE, BH15 1UG. 01202 280000 / www.lighthousepoole.co.uk. "A romantic musical comedy with a fantastic soundtrack and high energy dance that will fizz and whizz its way into your heart."

MARIA KESELMAN: 'WITH A SONG IN MY HEART'

30 June

Corn Exchange, High East Street, DORCHESTER, DT1 1HF. 8pm. £14 / £12. 01305 266926 / www.dorchesterarts.org.uk. "A rare opportunity to engage with one of the world's greatest leading ladies."

'THE CARPENTERS STORY'

30 June

Octagon Theatre, Hendford, YEOVIL. 7.30pm. £24. www.octagon-theatre.co.uk.

inside **ut** dorset

kermiz

le cirque du platzak

A temperamental Italian aerialist fighting with a Spanish toreador and an acrobat obsessed with staplers – just some of the characters in this circus adventure.

sat 8 & sun 9 july, 3pm

As part of the **Pommery Dorset Seafood Festival**
North Quay, Weymouth, Dorset DT4 8TA

buy tickets now

Via our website or call: **01305 260954**

Seating £10/£8 Floor seating £6

activate
Produce Promote Present



www.insideoutdorset.co.uk

[EVOLVER]



EVOLVER 99

Editor SIMON BARBER

Assisted by GILBERT QUICK

Evolver Writer

FIONA ROBINSON www.fionarobinson.com

Graphic Design SIMON BARBER

Website OLIVER CONINGHAM at AZTEC MEDIA

Front Cover 'PROTECTION FACTOR 97, FOREBODING BEACH SCENE' by STEVEN LINDSAY (Oil on canvas, 100 x 80 cm, Lime Tree Gallery at Fresh: Art Fair, 12 - 14 May, Cheltenham Racecourse)

EVOLVER MEDIA

8 BUCKLAND ROAD

PEN MILL TRADING ESTATE

YEovil

SOMERSET BA21 5EA

Email simon@evolver.org.uk

Telephone 01935 808441

Website www.evolver.org.uk

Published by EVOLVER MEDIA LIMITED

Pre-Press by FLAYDEMOUSE 01935 479453

Printed by STEPHENS & GEORGE

Distributed by ACOUSTIC

07456 009377 / everett190@btinternet.com

DEADLINE FOR EVOLVER 99

July and August 2017

WEDNESDAY 7 JUNE

www.facebook.com/EvolverMagazine

www.facebook.com/EvolverMagazine

www.facebook.com/EvolverMagazine

www.facebook.com/EvolverMagazine

CLASSIFIEDS

OPPORTUNITIES

● Evolver Prize 2017: Artists, photographers and designers are invited to submit actual cover size 2D work in any media for selection for the front cover of Evolver 100 (July and August 2017 issue) plus £1,000. The judges will also select an additional 99 works for a Top 100 Exhibition at the Thelma Hulbert Gallery, Honiton (8 July - 26 August) and publication in Evolver 100. Deadline 15 May 2017. See page 29.

● Sea Music Artist in Residence Programme: Writer in Residence and Visual Artist in Residence opportunities at Poole Museum this summer. Information at www.poolemuseum.co.uk/plan-your-visit/seamusic/

● Call for entries to Sherborne Art Club Open Exhibition. The Sherborne Art Club Open Exhibition will be held at the Digby Hall in Hound Street, DT9 3AB. Handing in day is Wednesday 12 July, 10am - 1pm, 2 - 4 pm. The exhibition opens to the public on Saturday 22nd July, daily from 10am to 5.30pm, closing on Sunday 30th July at 1pm. Online entry forms are available from the website: www.sherborneartclub.com

WORKSHOPS AND COURSES

● The Sculpture Barn, Mappowder, Dorset. Are you curious about how to sculpt? Or do you want to improve your sculpting skills, learn or just practice with like minded people? Friendly, supportive untutored workshops and tutored courses with Nationally and Internationally renowned professional sculptors, April - October. More information on www.artandsculpture.co.uk. Tel. 07903 651493.

● Art Workshops with popular TV artist Marilyn Allis. Watercolour, Vibrant acrylic, Mixed Media and Pebeo. Also taster mornings, Rogershill, Brianspuddle. 07789 026546 / www.marilynallis.com.

● Drawing, painting, stone carving, bookmaking, printmaking, lensless photography plus lots more high quality, low cost courses at Artisan Studio, Bournemouth. E: artisanstudio1@gmail.com / M: 07729 829209 / W: www.thecommunityartstudio.blogspot.co.uk/

● Travelling Art Tutor. Drawing, painting, printmaking and life drawing. Beginners or more advanced tuition available. Book for one session or a course of ten. Can teach groups of up to 15 people. All materials and equipment can be supplied. Based in West Dorset. For more information call Tara 07505 268797. Facebook: [bridportartclasses](https://www.facebook.com/bridportartclasses)

● Life drawing group (untutored). Tuesday evenings, 6 - 8pm, Mere, BA12 6HA. Contact Jules on 01985 845063 or juleshorn@rocketmail.com.

● Flux'n'Flame Jewellery School: Now one of the largest independent jewellery schools in the UK offering an ever expanding range of traditional jewellery making courses from 1 day tasters, weekend courses and weekly classes to a 6 day Summer School and specialist masterclasses. Taught by professional jewellery designers and set in a beautiful purpose built workshop in the heart of the Dorset countryside near Milton Abbas. www.fluxnflame.co.uk. For more info please call Jesa on 01258 881690 / 07785 550771.

● Art workshops with top well-known artists. Laura Reiter, James Tatum, Hashim Akib, Soraya French, Stephanie Butler, Francesco Fontana, Jake Winkle, John Hoar, Haidee-Jo Summers plus more. £120 for a two day workshop. East Devon Art Academy, Sidmouth, Devon EX10 8LS. www.eastdevonart.co.uk/ 01395 516284.

● Moorbath Creative near Bridport. Art / creative writing holidays. Experienced, inspirational tutors. Sculpture, writing for children, stained glass, painting and more. Wonderful location, fab house with indoor pool. www.moorbathcreative.com/ 07798 573432.

MISCELLANEOUS

● Psychic artist offering spirit guide portraits. Info email: gsamdaliri@hotmail.co.uk. Visit www.garysamdaliri.co.uk.

● Experienced Life Model, own transport, 20 mile radius from Glastonbury, £15/hour. Jo Waterworth 01458 834405 or jowaterworth23@hotmail.co.uk.

● Posture with Attitude, Sophie Larter, Life Model. Experienced and professional. Based in Somerset, own transport, will travel, Devon / Dorset and beyond. Contact details 07531 703168 or sophie.ann.larter@gmail.com.

● Models wanted for friendly and casual artists' life drawing groups in Shepton Mallet (Wednesdays), Glastonbury (Thursdays) and Langport (Fridays). The groups are well established and attended by anything between 6 and 15 artists. Previous experience is not essential. Sessions run from 10am - 12.30pm with a break half-way. Teas, coffees and a variety of strange brews are provided with a selection of biscuits which are sometimes fresh! New artists are always welcome. We all learn from each other. Models' fees are £14 per hour and help may be available with transport. Subscriptions for artists are £11 per session. For further information ring Richard on 07887 370457 or email rgjfield@gmail.com, or email Dave at davecufflin@btinternet.com.

● The Sea Music Celebration Talks are part of a series of special events, celebrating the conservation of 'Sea Music', a site-specific sculpture by Sir Anthony Caro, installed on Poole Quay in 1991. 1) The Work of Anthony Caro by Julius Bryant at V&A Museum, Friday 26th May, 2.30pm, Arts University Bournemouth, Lecture Theatre UH001. 2) The Conservation of Sea Music & Decay mechanisms in public sculpture by conservation expert Jane Foley & Hall Conservation, Friday 30th June, 2pm, Poole Museum. More info at www.poolemuseum.com.

● Artist or craftsperson wanted to share shop / studio in Somerton as part of a new arts complex. Email Lucy for details. hinds37@btinternet.com

● Got a gallery? Intrigue your visitors with something new and different. View 150 world class street photography portraits here: www.instagram.com/kitsadogrove. Contact Kit on 07960 422676 or kit@inst.org.

● Painting holiday in Spain 20 - 28 June with Louise Waugh in a quiet unspoilt village in the mountains near Granada. We stay in a friendly small family run hotel with beautiful gardens and a pool and all painting and drawing locations are on our doorstep. Trips to the sea or Granada can be arranged. Some places still left! Contact louise.waugh@btinternet.com or 07530 591133 for further details.

● Affordable website design, help with social media, Mail Chimp newsletters and Wix websites. DT9 6LA. Anne King: ipadery@icloud.com / ipadery.co.uk / 01935 872470.

● EVOLVER 100 DEADLINE: Wednesday 7 June

EVOLVER CLASSIFIEDS

10p per word

Add £5 for BOX • Add £10 for RED BOX

1) Email to classifieds@evolver.org.uk

2) Send cheque (payable to 'Evolver Media') to: EVOLVER CLASSIFIEDS, EVOLVER MEDIA, 8 BUCKLAND ROAD, PEN MILL TRADING ESTATE, YEovil, SOMERSET BA21 5EA

FREE EVOLVER LISTINGS

Exhibition and performance information should be emailed to: listings@evolver.org.uk

Please supply (in upper and lower case) in the following order:

Event

Date(s)

Venue, address (including postcode). Times. Admission fee. Contact number / website. Up to 30 words about the event.

SUBSCRIBE TO EVOLVER

£21 (6 issues starting with EVOLVER 100, July and August 2017 issue)

NAME
ADDRESS
POSTCODE

Send cheque (payable to 'Evolver Media') to: EVOLVER MEDIA, 8 BUCKLAND ROAD, PEN MILL TRADING ESTATE, YEovil, SOMERSET BA21 5EA

100

NEXT ISSUE!

DorchesterARTS Open 2017 EXHIBITION

CALLING ALL WESSEX ARTISTS

Wessex artists are invited to submit work in any media for the seventh Dorchester Arts Open Exhibition. For the first time this year submissions of sculpture and other 3-dimensional work are also welcomed.

Work chosen by the selection panel will be shown from Tuesday 11th - Friday 28th July 2017 at Duke's Gallery, Brewery Square, Dorchester.

PRIZES:

- Free entry for a solo exhibition in Dorset Art Weeks 2018 and promotional support for this show
- 'Exhibit A' feature in Evolver Magazine
- £250 cash

2-D work (including frame) should be no larger than 80cm in width

Entry opens Monday 6th March

Deadline for submissions Friday 26th May 2017

FULL DETAILS AND ENTRY FORMS:

Email: enquiries@dorchesterarts.org.uk • Call: 01305 266926

Visit: www.dorchesterarts.org.uk • Send SAE (marked 'Open 2017') to: Dorchester Arts, The Corn Exchange, Dorchester, Dorset DT1 1HF

SELECTION PANEL:

Simon Barber (Editor, Evolver magazine)

Suzy Rushbrook (Programme Curator / Membership manager, Dorset Visual Arts)

Mark Tattersall (DA Artistic Director / Chair at The Art Academy, London)

Deborah Westmancoat (Winner of Exhibition Prize, DA Open 2015)

Sarah Wild (Partner, Duke's Auctioneers)

DorchesterARTS Duke's

STUDY A CREATIVE ARTS DEGREE

Places still available on BA (Hons) and Foundation Degree courses in state-of-the-art newly refurbished facilities:

0 1 20 0 0 0 Fashion Design
Communication Fine Art
0 - 0 3d 0
Surface Design
0 3 3 0 0 0 0

DEGREE SHOW

6 3210 1-0 0 3 0 (00

www.somerset.ac.uk



University
Centre
Somerset

Part of Bridgwater & Taunton College



Au⁷⁹

picture framing
giclee printing
graphic design
dry mounting
artist surfaces
gallery services

+GILDING

Based in a converted 18thC silk mill in
Frome, Somerset.

www.mount-art.co.uk
01373 473894

the Bridport Prize

poems | short stories | flash fiction | novels

CLOSING DATE

31st MAY 2017

Poems | 1st prize £5000

judge Lemn Sissay

Short Stories | 1st prize £5000

judge Peter Hobbs

Flash Fiction | 1st prize £1000

judge Kit De Waal

Novel Award | 1st prize £1000

judge Nathan Filer

enter online | www.bridportprize.org.uk

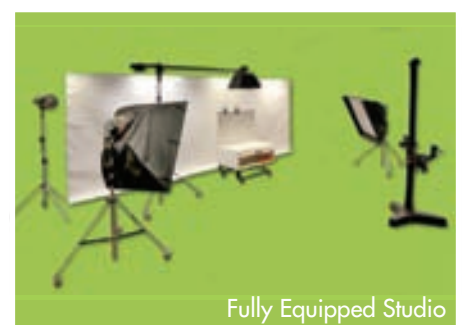
FLAYDEMOUSE

DESIGN | PRINTING | WEBSITES | PHOTOGRAPHY

Helping artist reproduce their work on various media. Photographic Studio also available for rent. Colour matching and artwork creation to produce canvas, posters, greeting cards, postcards etc. Website design and hosting also available with full CMS and E-Commerce support.



CUSTOMER CARE: Detail and colour accuracy is foremost in our service to our customers - using the latest Context Hi Definition A2+ scanner ensuring that all of your artwork's detail is captured even in the shadow areas, up to 9600dpi. The scanner can cope with Artwork as large as A1, the thickness of your artwork is unlimited, but should our scanner prove to be unsuitable for your 3d item our photography studio is there to take the strain. All types of art media catered for - watercolour, oils, acrylics, canvases, charcoal drawings, photographs, pastel, pen and ink. Artwork Insurance included.



Call or drop in to our studio to see what we can do to help promote your work.

8 Buckland Road, Yeovil, Somerset BA21 5EA
Tel: 01935 479453 www.flaydemouse.com

EVOLVER SPONSORS AND OUTLETS



EVOLVER IS AVAILABLE FREE AT THE FOLLOWING WESSEX OUTLETS:

ABBOTSBURY: Dandel Gallery. AXMINSTER: Axminster Arts Café, Sublime Café. BATH: Action for Hearing Loss, Bath Artists' Studios, Bath Contemporary, Beaux Arts, David Simon Gallery, Edgar Modern Gallery, Fringe Arts, Holburne Museum of Art, Imagination Gallery, Michael Tippett Centre, Rostra Gallery, University of Bath, Victoria Art Gallery. BERE REGIS: Cyril Wood Court. BLANDFORD: Bryanston Arts Centre, Forum Café, Forum Framers. BOURNEMOUTH: All Fired Up, Artcetera, Big Picture, Flux Art Supplies, Miramar Hotel, Pavilion Dance, Royal Bath Hotel, Russell-Cotes Museum & Art Gallery. BRADFORD ON AVON: Wiltshire Music Centre. BRIDGWATER: Bridgewater Arts Centre, Engine Room. BRIDPORT: Beach & Barnicott, Bridport Arts Centre, Bridport Music, The Bull Hotel, Electric Palace, Lyric Theatre, St Michael's Studios. BRISTOL: Arncliffe, Bocabar, Bristol Fine Art, Bristol Museum & Art Gallery, Colston Hall, Create Centre, Folk House, Grant Bradley Gallery, Jamaica Street Artists, Lime Tree Gallery, PRSC Gallery, Rise, RWA, Spike Island, St George's, Tobacco Factory, Trinity Centre, UWE, Watershed. BROADWINDSOR: Craft & Design Centre. BRUTON: Bruton Art Factory, Bruton Castle, At The Chapel, Hauser and Wirth, BUDLEIGH SALTERTON: Brook Gallery. BURNHAM ON SEA: Princess Theatre & Arts Centre, Seabreeze Gallery. CASTLE CAREY: Bailey Hill Bookshop, Trowbridge Gallery. CHARD: Barleymow's, The Gallery, Horseshoe Mill Hotel. CHEDDON FITZPAINE: Hestercombe Gallery. CHRISTCHURCH: Hatch Gallery, Hayloft Gallery, Red House Museum, Regent Centre. CLEVEDON: Fizz Gallery. CONGRESBURY: Church House Designs. CORFE CASTLE: Boilerhouse Gallery, Gallery 41, Morton House Hotel. CORSHAM: Pound Arts. CREWKERNE: Phoenix Books. CROWCOMBE: Halsway Manor. CULMSTOCK: The Strand Stores. DEVIZES: Bluestone Gallery, St John's Art & Deco. DORCHESTER: Artsreach, Dorchester Arts, Duke's, Dorset County Museum, Frank Herring & Sons, Gallery on The Square. EAST LAMBROOK: East Lambrook Manor Gardens. EXETER: Bike Shed Theatre, The Cavern, Corn Exchange, Exeter College,

Phoenix Arts Centre, The Real Food Store, Southgate Gallery, Spacex Gallery, Uneath. FROME: Black Swan Arts, Cheese and Grain, Fiat Lux, Merlin Theatre, Mount, Rook Lane Arts. GILLINGHAM: The Idea Works, Slade Centre. GLASTONBURY: Abbey Museum Gallery, Bocabar, Glastonbury Galleries, Market House Hotel, Red Brick Building. HEMYOCK: Healthy Living Centre. HIGHCLIFFE: In The Frame. HONITON: The Beehive, Hybrid Gallery, Strummer Pink, Thelma Hulbert Gallery. ILMINSTER: Dillington House, Ilminster Arts Centre. LANGPORT: 4 Every Cloud, Art Tea Zen, Shakspeare Glass, Somerset Art Works, Somerset Levels Baskets. LANGTON MATRAVERS: Burngate Stone Carving Centre. LYME REGIS: Blue Lias, Coombe Street Gallery, Fine Art Framing, Marine Theatre, Studio 19, Town Mill. MARLBOROUGH: Framemakers. MARTOCK: 303 Gallery, Martock Gallery, The Hollies Hotel. MERE: Beaumont Gallery. MILDENHALL: Rabley Contemporary Drawing Centre. MILTON ABBAS: Flux'n'Flame. MINEHEAD: Courtyard Framing, Leo Davey Gallery, Regal Theatre. MORCOMBELAKE: Artwave West. MUCHELNEY: John Leach Gallery. NORTH CURRY: Community Café. OTTERTON: Otterton Mill. POOLE: Arts University Bournemouth, Bournemouth University Atrium Gallery, Guildhall Gallery, Josephine Wall Gallery, Lighthouse, The Gallery Upstairs, Poole Museum. PORLOCK: Churchgate Gallery, Melody Art. PORTISHEAD: Tinca Gallery. PORTLAND: White Stones. SALISBURY: City Hall, Fisherton Mill, Framemakers, Salisbury Arts Centre, Salisbury Playhouse, Studio 53, Wiltshire Gallery, Young Gallery. SEATON: Arts Café. SEAVINGTON: Village Shop. SHAFTESBURY: The Cygnet, Grosvenor Hotel, Salt of the Earth, Shaftesbury Arts Centre. SHEPTON MALLET: My Coffee Stop, One Craft Gallery. SHERBORNE: Jerram Gallery, New Digby Hall, Old Barn Framing Gallery, Winstone's. SIDCOT: Sidcot Arts Centre. SIDMOUTH: East Devon Art Academy, Flo and Us, Kennaway House, Winstone's. SIXPENNY HANDLEY: The Walnut Tree. SOMERTON: ACE Arts, Gifted Company & Gallery Coffee Shop. SOUTHBOURNE: Coastal Creatives. SOUTH CADBURY: Chapel Cross Tea Rooms. SOUTH PETHERTON: David

Hall, Provender Cafe. STALBRIDGE: Guggleton Farm, Dike & Sons. STOKE ST GREGORY: Willows & Wetlands Centre. STOURHEAD: First View Gallery. STREET: Millfield School Atkinson Gallery, Strode Theatre. STURMINSTER NEWTON: The Exchange, Poet's Corner, Wessex Photographic. SWANAGE: Durlston Castle, L'Artishe, Little Green Gallery, Mowlem Theatre, Mulberry Bush Gallery, Quarr Gallery, Sansom Gallery, Saul 2 Gallery. TAUNTON: Brewhouse, Creative Innovation Centre, Ginger Fig, Harlequin Gallery, Jane Amour, Mount Somerset Hotel, Queen's College, Shakspeare Glass, Somerset College of Arts & Technology, Tacchi-Morris Arts Centre. TINCLETON: Tincleton Gallery. TIVERTON: Lantic Gallery. TROWBRIDGE: Arc Theatre, The Lamb. VERWOOD: The Hub. WAREHAM: Creative Gallery, Priory Hotel, Rex Cinema. WATCHET: Contains Art. WELLS: A2 Gallery, Good Earth, Somerset Guild of Craftsmen Gallery and Shop. WEST BAY: Sladers Yard. WEST COKER: Lanes, Old School Room. WESTHAY: Somerset Crafts. WESTON-SUPER-MARE: Frame Station, Playhouse, Weston College. WEYMOUTH: Cackleberry Frames, Gallery on The Wey, Leighton Gallery, Weymouth College. WIMBORNE: Square Records, Tivoli Theatre, Walford Mill Craft Centre. WOODBURY: Woodbury Studio Gallery. WORTON: Old Mill Gallery. WRINGTON: Barleymow Walled Garden Café. YEovil: Acorn Records, Octagon Theatre, Yeovil College. YETMINSTER: Old School Gallery.

Plus selected TOURIST INFORMATION CENTRES and LIBRARIES throughout Wessex.

EVOLVER IS SPONSORED BY:

ACE Arts • Atkinson Gallery • Aztec Media • B-Side Bath Contemporary • Black Swan Arts Bridport Arts Centre • Contains Art The Creative Gallery • Dorchester Arts Dorset Visual Arts • Duke's • Exeter School of Art Lighthouse • Mount • Octagon Theatre Old Brick Workshop • Salisbury Arts Centre Sladers Yard • Somerset Art Works Stephens & George • St Michael's Studios Thelma Hulbert Gallery • Tincleton Gallery Walford Mill Crafts

EVOLVER FRONT COVERS

1 P.J. Harvey 2 Julia Keyte 3 Peter Ursem 4 Steven Marshall 5 Ursula Leach 6 Andrew Henon 7 Martyn Brewster 8 Brian Rice 9 John Skinner 10 Nicholas de Serra 11 Bronwen Gwillim 12 Suzanne Partridge 13 Brian Graham 14 Gavin Turk 15 Amanda Wallwork 16 Sian Bonnell 17 Tim Andrews 18 Paul Jones 19 Peter Hardie 20 Aline Johnson 21 Brian Rice 22 Maisie Hill 23 Angela Charles 24 Susie Needham 25 Chris Dunsheath 26 Jenny Graham 27 Clare Teal 28 Colin Bell 29 Robert Woolner 30 Ron Jesty 31 Jeremy Gardiner 32 James Lynch 33 Peter Ursem 34 Ray Malone 35 Andrew Crane 36 Fiona Robinson 37 Janet Pernor 38 Ashraf Hanna 39 Julie Dunn 40 Brian Rice 41 Roger Smith 42 Simon Garden 43 Angela Charles 44 Day Bowman 45 Cider with Rosie 46 Una Woodruff 47 Gilbert Quick 48 Elisabeth Frink 49 Rachael Nee 50 Carol Peace 51 Little Boots 52 Tony Martin 53 John Wragg 54 Paul Blow 55 Brian Graham 56 Peter Ursem 57 Love and War 58 Leo Davey 59 Andy Whale 60 Barry Cawston 61 Jon Boden 62 Nigel Lord 63 Mark Ronson 64 Andrew Bolton 65 Ukulele Orchestra 66 Joanna MacGregor 67 Hyunmin Ryu 68 Martin Grover 69 Paloma Faith 70 Malcolm Andrews 71 Harmonic Fields 72 Barry Cawston 73 Bellowhead 74 Billy Bragg 75 David Cobley 76 Oliver Teagle 77 John Cooper Clarke 78 Iona Parkin 79 Lisa Wright 80 Paul Wright 81 Lisa Kibble 82 Zoë Barker 83 Simon Ledson 84 Carl Melegari 85 Rose Vickers 86 Howe Gelb 87 Jo Bannon 88 Moose Allain 89 Sandra James 90 Peter Lawrence 91 Broken Brass Ensemble 92 Jimmy Cauty 93 Liz Somerville 94 Linn O'Carroll 95 Sarah Hitchens 96 Stuart Mitchell 97 Carolyn Mendelsohn 98 Simon Hitchens 99 Steven Lindsay



Atkinson GALLERY



bath contemporary



BRIDPORT ARTSCENTRE

contains



DorchesterARTS

DORSET VISUAL ARTS

Duke's

EXETER SCHOOL of ART

Lighthouse POOLE'S CENTRE FOR THE ARTS



OCTAGON THEATRE

The Old BRICK WORKSHOP



SLADERS YARD

SCW somerset art works

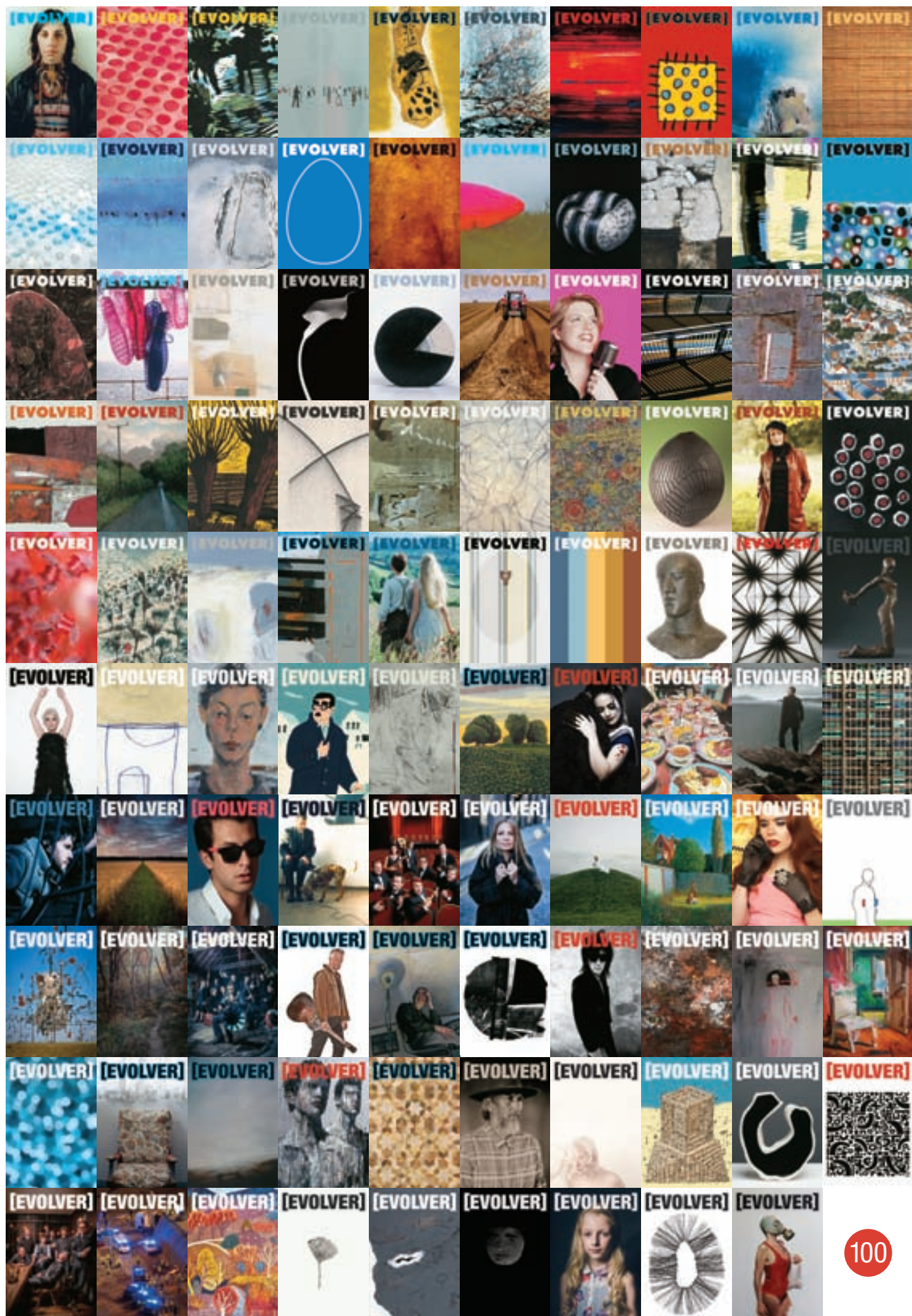
S&G STEPHENS & GEORGE

ST. MICHAEL'S STUDIOS

Thelma Hulbert Gallery

Tincleton Gallery

walfordmil crafts



EVOLVER PRIZE 2017

CALLING ALL ARTISTS [EVOLVER] PRIZE 2017

ARTISTS, PHOTOGRAPHERS and DESIGNERS are invited to submit ACTUAL COVER SIZE 2D WORK IN ANY MEDIA for selection for the **FRONT COVER OF EVOLVER 100** (July and August 2017 issue) **PLUS £1,000**

The judges will also select an additional 99 works for a **TOP 100 EXHIBITION** at the THELMA HULBERT GALLERY, Honiton (8 July - 26 August) and publication in **EVOLVER 100**

JUDGES:

Simon Barber (Editor, Evolver), **Angela Blackwell** (Curator, Thelma Hulbert Gallery), **Stewart Geddes** (President, Royal West of England Academy), **1 additional judge to be confirmed**

DEADLINE: THURSDAY 18 MAY 2017

Further information: www.evolver.org.uk/evolverprize • prize@evolver.org.uk



NAME
ADDRESS
POSTCODE
TELEPHONE
EMAIL

EVOLVER PRIZE 2017 ENTRY FORM

TITLE OF WORK	MEDIUM	SELLING PRICE *
1		
2		
3		

I ENCLOSE MY SUBMISSION FEE (£10 PER WORK)

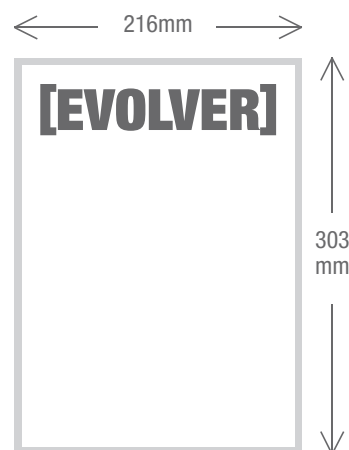
£

* EVOLVER will take a 40% commission from this price if the work is exhibited and sold

Send **ARTWORK + CHEQUE** (payable to 'EVOLVER MEDIA') + **SAE** FOR RETURN OF ARTWORK to:
EVOLVER PRIZE 2017, EVOLVER MEDIA, 8 BUCKLAND ROAD, PEN MILL TRADING ESTATE, YEOVIL, SOMERSET BA21 5EA

DEADLINE: THURSDAY 18 MAY 2017

☐ Please tick box if you do not wish to be added to the Evolver and Thelma Hulbert Gallery mailing lists



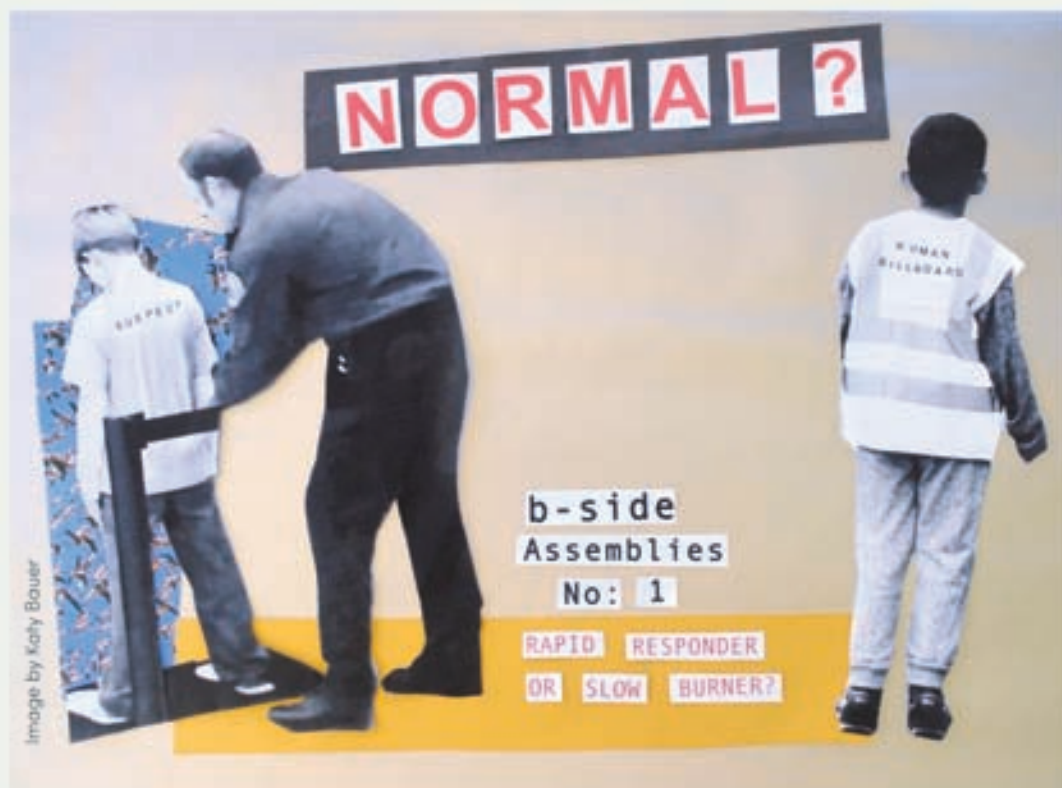
SUBMISSIONS

- The image size of all work submitted must measure 216 x 303mm (That's the actual size of Evolver's front cover plus an extra 3mm all round)
- The work should be an unframed original artwork or high quality print that can be sold at the exhibition
- Up to 3 works may be submitted
- A submission fee of £10 per work will be charged
- Please also supply a stamped addressed envelope for return of artwork

PLEASE NOTE

The judges will definitely not be looking for a particular style of work

The work submitted should be anything that you believe would make a great front cover



B-SIDE ASSEMBLIES: NO 1

How do artists
respond to political
and social change in
times of crisis?

Saturday 17 June | 12 – 5pm

Conversation, information,
active participation.

Featuring contributions
from: Dickie Beau,
Paul Soulellis, Paula
Crutchlow, Farhad
Berahman, Nicky Childs,
Katy Bauer and Gordon
Dalton.

St Georges Centre, Reforne,
Portland, Dorset, DT5 2AN
Tickets: £20

EXHIBITIONS AT B-SIDE OUTPOST:

Open: TUES – SAT 12 – 5pm

FREE ADMISSION

77 Fortuneswell, Portland, DT5 1LY

01305 568044



Brutal Solitude

Brendan Buesnel

20 May to 10 June

Artists Talk: 25 May 7pm



Shahre Farang

Farhad Berahman

17 June – 22 June

Workshop: 18 June 11 – 1pm



Uncertain

Farhad Berahman

17 June – 01 July