

# EVOLVER MAGAZINE

THE **FREE** WESSEX ARTS AND CULTURE GUIDE







Anita Klein - 'Lake Swim' Linocut, 2020

# The Royal Society of Painter - Printmakers

6 September - 7 October 2021

**Atkinson GALLERY**



**MILLFIELD**

Millfield, Street, Somerset BA16 0YD • Monday - Saturday 9.30am - 5pm  
[www.atkinsongallery.co.uk](http://www.atkinsongallery.co.uk) • Tel: 01458 444322 / 444176





# EVOLVER MAGAZINE #121

September and October 2021



## Exhibit A

### Philip Davies: When You Were Not Looking

*Oil on canvas, 110 x 120 cm, 2021*

ARTIST'S STATEMENT: "This is one of a series of paintings executed over the last eighteen months. I started with the clear intention of not knowing where or how these compositions would take me. Having previously been occupied with ideas and themes, I intentionally let this 'narrative' be subsumed into the intuitive and instinctive. Representation and the 'story' was abandoned for abstraction and pattern, giving me a freedom through colour, texture and rhythm without the usual constraints of 'an idea'. In many ways I have rediscovered previously unresolved approaches to my painting that have now coalesced into something that is essentially conclusive and assured in their own particular language."

#### SOMERSET OPEN STUDIOS 2020

**18 September - 3 October:** Fousham Cottage, HUISSH MOOR, near Wiveliscombe, TA4 2EZ.  
10am - 4pm (closed Monday and Thursday). 01984 624876 / phildaviesart.com.

**A CENTURY OF  
BRITISH ART**  
Bournemouth Arts Club 1920–2020

**RUSSELL-COTES**  
HOUSE • GALLERY • GARDEN

1st October 2021  
to 6th March 2022  
[www.russellcotes.com](http://www.russellcotes.com)



# Visual Arts

September and October 2021



'BATCHELOR GREEN' (Acrylic and coloured pencil on aluminium panel 76 x 76 cm, 2021)



'OOOO HELLO'



'IF ONLY YOU'D SEEN WHAT I'D SEEN'

## Angela Charles: What Are You Looking At?

This exhibition of new work by artist Angela Charles explores notions of 'seeing' in art from the perspective of a visually impaired painter (with gerbil coloured hair).

Since graduating from Goldsmiths in 1989, Angela Charles (also known as Angela Blackwell) has had parallel careers as an award winning curator and visual artist. From regular shows in St Ives to commissions for a high profile exhibition in Milan, Angela has achieved commercial success with her paintings drawn from her memories of place.

And yet, unbeknown to purchasers of her work and the galleries that represent her, for the last eleven years Angela has been losing her sight. She has felt alone with what she refers to as her 'guilty secret', still painting and exhibiting whilst denying the existence of her blindness (and her guide dog) to buyers and galleries.

Angela says: "This project marks a crucial period of transition in my artistic practice whilst I adapt to my sight loss."

During the summer of 2021 she has been using OSR Projects in West Coker as a studio in advance of the exhibition this Autumn. A brighter palette and bolder mark making are features of a new series of paintings directly relating to previous work in style and form. These new works look at the elements of everyday life that disable her, her life growing up in a seaside town and her new challenges of coming out as a blind painter.

Angela has also been working closely with filmmaker Liberty Smith on a documentary film. With openness and humour, the film reveals a fresh perspective on the challenging process of opening up about what it is like to lose your sight as a visual artist.

**15 October - 7 November:** OSR Projects, Church Street, WEST COKER, BA22 9BD. Thursday - Saturday 11am - 5pm, Sunday 11am - 3pm. [osrprojects.co.uk](http://osrprojects.co.uk).



## SUMMER PRINTS & DRAWINGS SHOW

continues until 12 September

**MARZIA COLONNA MRBS**

Gaia: recent collages & sculpture

18 September - 14 November 2021

Lunch at **Café SLADERS**  
Reservations: 01308 459511

### SLADERS YARD

Contemporary Art, Furniture & Craft Gallery  
West Bay Bridport Dorset DT6 4EL  
e: [galler@sladersyard.co.uk](mailto:galler@sladersyard.co.uk)  
[sladersyard.co.uk](http://sladersyard.co.uk)





# Visual Arts

## LOUISE BANKS: 'WAYS TO LEAVE LAND'

**Until 4 September**

Seaglass Gallery, The Strand, LYMPSTONE, Devon, EX8 5ES  
Friday and Saturday 10am - 4pm.  
seaglassgallery.co.uk. *Paintings.*

## 'INSIDE OUT'

**Until 4 September**

Heritage Courtyard Gallery & Studios, 6 Heritage Courtyard, WELLS, BA5 2RR. Tuesday - Saturday 10.30am - 4pm.  
heritagecourtyardstudio.com.

## 'THE BATH AND WEST: A CELEBRATION'

**Until 4 September**

Somerset Rural Life Museum, Chilkwell Street, GLASTONBURY, BA6 8DB. Tuesday - Saturday 10am - 5pm. £7.50 / £5.95 / £3.50. 01458 831197 / srlm.org.uk.

## WILTSHIRE CREATIVE SUMMER OPEN EXHIBITION 2021

**Until 4 September**

Salisbury Arts Centre, Bedwin Street, SALISBURY, SP1 3UT. Tuesday - Saturday 10am - 3pm.  
wiltshirecreative.co.uk.

## ELIZABETH ADAM: 'A CELEBRATION'

**Until 4 September**

The Slade Centre, The Square, GILLINGHAM, SP8 4AY. Tuesday - Saturday 9am - 4pm. 07775 431652 / sladecentre.com. *"Elizabeth Adam is best known for her pots, often large, stoneware and glazed. She is also a printmaker with a belief in the significance of life drawing. This is an opportunity to enjoy the full range of her work."*

## 'PUTTING ON A SHOW'

**Until 4 September**

ACE Arts, Market Place, SOMERTON, TA11 7NB. Tuesday - Saturday 10am - 5pm. acearts.co.uk.

## 'IMPRESSIONS'

**Until 5 September**

Sou'-Sou'-West Arts Gallery, Symonds Estate, BRIDPORT, DT6 6HG. 10.30am - 4.30pm. 01308 301326 / sousouwest.co.uk. *"Annual printmakers open featuring emerging and well-established printmakers from the South West."*



JULIE AYTON 'HARVEST MOON JAR' (Stoneware, height 33 cm, 2021)

## Connect

The Vanner Gallery is a brand new contemporary art gallery in the heart of Salisbury. Committed to exhibiting original artworks, the gallery showcases the best of contemporary art and craft practice across a range of materials and media. The gallery's programme of exhibitions is uniquely run by guest curators, each featuring works for sale from regional, national and international artists and makers.

In the opening show, curator Prudence Maltby explores the concept of connection at a time when the city emerges from adversity. Following the Novichok attacks in 2018 and more recently the pandemic, Maltby uses people, art and place as the cornerstone to examine how we process our experience of living separate lives through uncertainty.

The exhibiting artists are Julia Atkinson, Julie Ayton, Eleanor Bartlett, Brian Bishop, Lucinda Burgess, Henny Burnett, Fran Donovan, Ruth Dresman, Susan Francis, Mirka Golden-Hann, Michelle Griffiths, Patrick Hallissey, Alex Hanna, Julia Polonski, Jane Ponsford, Peter Randall-Page, Roger Stephens, Joanna Still, Anita Taylor, and Julieann Worrall Hood.

**17 September - 24 December:** The Vanner Gallery, 45 High Street, SALISBURY, SP1 2PB. Tuesday - Saturday 10am - 5pm.  
vannergallery.com.

## MARTYN WRENCH Until 5 September

The Arts Quarter, The Lippiatt, CHEDDAR, BS27 3PQ. Tuesday - Sunday 10am - 3pm. 01934 744806 / theartsquarter.com. *Paintings.*

## BLACKMORE VALE ART TRAIL Until 5 September

Various locations in SHAFTESBURY and surrounding villages, SP7. 11am - 4.30pm. 01747 853822. *"Twenty artists open their studios."*

## 'MARIONETTES OF LISBON'

**Until 5 September**

The Arts Quarter, The Lippiatt, CHEDDAR, BS27 3PQ. Tuesday - Friday 10am - 3pm, Saturday 10am - 4pm, Sunday 11am - 3pm. 01934 744806.

## CANALETTO: 'PAINTING VENICE' Until 5 September

The Holburne Museum, Great Pulteney Street, BATH, BA2 4DB. Monday - Saturday 10am - 5pm, Sunday and Bank Holiday 11am - 5pm. £11. holburne.org.



## 'WE FEED THE WORLD'

**Until 10 September**

Gallery At The Station, Station Approach, FROME, BA11 1RE. Tuesday - Saturday 9am - 4pm. 07980 310699 / galleryatthestation.com. *"47 international award winning photographers celebrate the work and land of 50 smallholder farmers from around the globe who produce 70% of the world's food."*  
*Above: Nick Ballon 'Woman from the El Choro community in Bolivia'*

## 'WE FEED THE WORLD'

**Until 10 September**

The Whittox Gallery, Rise, Whittox Lane, FROME, BA11 3BY. Tuesday - Saturday 9am - 4pm. 07712 523734 / thewhittoxgallery.com. See above.



**20 Miles**

Paintings and prints by David A. Parfitt

30 July - 26 September 2021

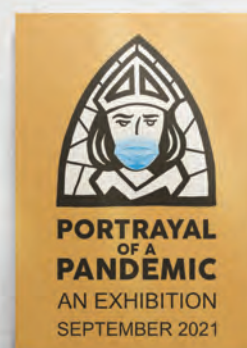
BLACKSWANROUNDTOWER

**3 - 12 September**

fine art, mixed media,  
sculpture, textiles, poetry


Active and  
in touch Frome

Frome Made differently



**PORTRAYAL  
OF A  
PANDEMIC**  
AN EXHIBITION  
SEPTEMBER 2021

galleries | studios | shop | cafe  
2 Bridge Street, Frome BA11 1BB

 **BLACKSWANARTS**

01373 473980 | www.blackswanarts.org.uk

**FREE ENTRY** Registered Charity No. 292463



bespoke picture frames.  
Made to Last.



STOUSHEAD

  
mount  
mount-art.co.uk




# ART


## EXHIBITION

### Hinton St George

*Local artists will be displaying paintings, drawings, prints, photography, glass work, sculpture and crafts.*

MANY OF THE WORKS ON SHOW WILL BE AVAILABLE TO PURCHASE



**SATURDAY 2ND  
& SUNDAY 3RD  
OCTOBER**

St George's Hall, Merriott Rd,  
Hinton St George,  
Somerset TA17 8SL

**11.00 AM TO 5.00 PM**



**HESTERCOMBE GALLERY**  
Contemporary art in reclaimed spaces

  
**HESTERCOMBE**  
where creative ideas grow

14.08.21 - 24.10.21

Mariele Neudecker  
**SEDIMENT**

  Supported using public funding by  
**ARTS COUNCIL  
ENGLAND**

**Somerset West  
and Taunton**

[hestercombe.com/gallery](https://hestercombe.com/gallery)  
@hestercombegallery @HestercombeGallery

Image: Mariele Neudecker, We Saw It Coming All Along [1 & 2] 2019, (detail), mixed media on archive print on board. © the Artist.



# Visual Arts

## 'THE JAPANESE PORTFOLIO OF A VICTORIAN DECORATOR'

**Until 12 September**

Russell-Cotes Art Gallery and Museum, East Cliff, BOURNEMOUTH, BH1 3AA. Tuesday - Sunday 10am - 5pm. £7.50 / £4. 01202 128000 / russellcotes.com.

## 'SUMMER PRINTS AND DRAWINGS SHOW'

**Until 12 September**

Sladers Yard, WEST BAY, Bridport, DT6 4EL. Wednesday - Saturday 10am - 4.30pm. 01308 459511 / sladersyard.co.uk. "Aquatint, carborundum, drypoint and silkscreen prints with mixed media drawings by Julian Bailey, Martyn Brewster, Michael Fairclough, Vanessa Gardiner, Janette Kerr, Alex Lowery and Sally McLaren, plus furniture and ceramics."

## 'LIFE IN LOCKDOWN'

**Until 12 September**

Russell-Cotes Art Gallery and Museum, East Cliff, BOURNEMOUTH, BH1 3AA. Tuesday - Sunday 10am - 5pm. £7.50 / £4. 01202 128000 / russellcotes.com.

## GUSTAV METZGER

**Until 13 September**

Hauser & Wirth, Durslade Farm, Dropping Lane, BRUTON, BA10 0NL. Tuesday - Sunday 10am - 5pm. hauserwirth.com/Somerset. "Exhibition of Gustav Metzger's work exploring the intersection between human intervention, nature and man-made environments."



## MARGARET JOHNSON: 'LUMINESCENCE'

**Until 18 September**

Gallery On The Square, Queen Mother Square, DORCHESTER, DT1 3BL. Monday - Saturday 9.30am - 5pm; Sunday 11am - 4pm. 01305 213322 / gallerypoundbury.co.uk. Paintings and embellished glass.



'A MURMURATION OF STARLINGS'

## Marzia Colonna

"Marzia Colonna's peaceful, powerful sculpted heads and her collages of the Dorset landscape and interior scenes celebrate nature and the world about us in delicious colours and painted patterns."

**18 September - 14 November:** Sladers Yard, WEST BAY, Bridport, DT6 4EL. Wednesday - Saturday 10am - 4.30pm. 01308 459511 / sladersyard.co.uk.

## TRICIA SCOTT AND LOIS WAKEMAN

**Until 19 September**

Sou'-Sou'-West Arts Gallery, Symonds Estate, BRIDPORT, DT6 6HG. 10.30am - 4.30pm. 01308 301326 / sousouwest.co.uk. Contemporary photography.

## 'WONDER TALES'

**Until 20 September**

Heart of The Tribe Gallery, 74 High Street, GLASTONBURY, BA6 9DZ. 11am - 5pm. 01458 832167 / heartofthetribe.com. Paintings by Rowena J Draper and Penelope O'Gara.

## PRUDENCE MALTBY: 'STARING FROM A THOUSAND YARDS'

**Until 25 September**

Pound Arts, Pound Pill, CORSHAM, SN13 9HX. 10am - 6pm. 01249 701628. Mixed media collages..

## NICK ANDREW: 'A GAP IN THE MARKET'

**Until 25 September**

Fisherton Mill Salisbury, 108 Fisherton Street, SALISBURY, SP2 7QY. Monday - Friday 10am - 5pm, Saturday 9.30am - 5.30pm. 01722 415121 / fishertonmill.co.uk. "Mixed media drawings, exploring the activity, movement and transitory nature of Salisbury Market and the city's bustling heart."

## DAVID PARFITT: '20 MILES'

**Until 26 September**

Black Swan Arts, 2 Bridge Street, FROME, BA11 1BB. Wednesday - Sunday 10am - 4pm. blackswanarts.org.uk. "Paintings and prints reflecting on our connections with nature, place and home."

## CAZ SCOTT

**Until 28 September**

The Etches Collection, Museum of Jurassic Marine Life, KIMMERIDGE, BH20 5EP. 10am - 5pm, 01929 270000 / caz-scott.co.uk. "Paintings inspired by the landscape, rocks and fossils of the Jurassic coast around Purbeck."

17 SEPT - 30 DEC 2021

# CONNECT

people, art and place



THE VANNER GALLERY

45 High Street Salisbury SP1 2PB  
vannergallery.com



@henryburnett



# Visual Arts

## DAVID A RINGSELL: 'NEW VIEWS ON FAMILIAR PLACES'

**Until 1 October**

The Artery Art Cafe, 7 Richmond Place, BATH, BA1 5PZ  
Wednesday - Friday 8.30am - 8.30pm, Saturday 9.30am - 9.30pm, Sunday 10am - 8.30pm. 01225 469127. *Paintings.*

## RICHARD CHOPPING: 'THE ORIGINAL BOND ARTIST'

**Until 3 October**

Salisbury Museum, The King's House, 65 The Close, SALISBURY, SP1 2EN. 10am - 5pm. £8 / £4. 01722 332151 / salisburymuseum.org.uk.  
*"Salisbury Museum celebrates the work of writer, illustrator and teacher Richard Chopping, best-known for illustrating the covers of nine of Ian Fleming's most memorable Bond books."*



## 'FLIGHTS OF FANCY'

**Until 7 October**

Central Gallery, Royal United Hospitals, Combe Park, BATH, BA1 3NG. Monday - Sunday 8am - 8pm. 01225 824987 / artatruh.org.  
*"Exhibition by six local printmakers who met at Marshfield Screen Print and all make original limited edition prints using a variety of techniques. Work by Kate Bernstein, Dominique Coiffait, Charlotte Farmer, Polly Gough, Liz Saunders, and Sarah Targett."*

*Above: Dominique Coiffait 'Large Embellished Butterfly'*

## 'KILVERT'S WORLD'

**Until 9 October**

Chippenham Museum, 9 - 10 Market Place, CHIPPENHAM, SN15 3HF. 10am - 4pm. 01249 705020 / chippenham.gov.uk/chippenham-museum.



MASTER CAPTION, 5mm blind, 7pt auto, 2pt baseline

## Keith Rogers: Beyond The Golden Reeds

"Keith Rogers lives on the Dorset coast, and every day he is inspired by breathtaking views and the wondrous local habitat. All this magic is reflected in his large scale, semi-abstract and expressive paintings - full of complex colours and patterns. Whether it's a painting, drawing or installation, what you see is packed with energy and movement. Emotive lines and scratch marks symbolise strength, vitality and growth, evoking positive feelings charged with passion. Absence is as important as presence. By letting go we can move our overactive minds into an empty space and find that happy place."

**16 October - 13 November:** Allsop Gallery, Bridport Arts Centre, South Street, BRIDPORT, DT6 3NR. Tuesday - Saturday 10am - 4pm. 01308 427183 / bridport-arts.com / keithrogers.co.

## ZENNOR BOX AND GRETA BERLIN

**Until 11 October**

Damers Corridor N1, Dorset County Hospital, DORCHESTER, DT1 2JY. 8am - 8pm. dchartsinhospital.org.uk.

## THE LONDON GROUP: 'IN PLAIN SIGHT'

**Until 30 October**

Thelma Hulbert Gallery, Dowell Street, HONITON, EX14 1LX. Thursday - Saturday 10am - 5pm. 01404 45006 / thelmahulbert.com.

## MARTIN BROWN: 'HORRIBLE HISTORIES AND OTHER DAZZLING DRAWINGS'

**Until 31 October**

Museum of Somerset, Castle Lodge, Castle Green, TAUNTON, TA1 4AA. Wednesday - Saturday 10am - 5pm. swheritage.org.uk.

## NATIONAL SCULPTURE PRIZE 2021

**Until 1 November**

Broomhill Art Hotel, MUDDIFORD, Barnstaple, EX31 4EX. Monday - Sunday 9am - 9pm. £10 / £5. 01271 850262 / broomhill-estate.com.

## EDUARDO CHILLIDA

**Until 3 January**

Hauser & Wirth, Durslade Farm, Dropping Lane, BRUTON, BA10 0NL. Tuesday - Sunday 10am - 5pm. hauserwirth.com/Somerset.  
*"Sculptural works and drawings by one of the foremost Spanish sculptors of the twentieth century."*

## ERIC BAILEY AND DAVID MARL

**1 - 7 September**

The Gallery, Shaftesbury Arts Centre, Bell Street, SHAFTESBURY, SP7 8AR. Monday - Saturday 10am - 4pm. shaftesburyartscentre.org.uk.

## WALKING FEET QUILTERS: 'LABOURS OF LOCKDOWN'

**1 - 7 September**

The Gallery, Shaftesbury Arts Centre, Bell Street, SHAFTESBURY, SP7 8AR. Monday - Saturday 10am - 4pm. 01747 855243.

## LESLEY DIXON

**1 - 30 September**

The Creative Gallery, St John's Hill, WAREHAM, BH20 4NB. 10am - 5pm. creativegallerywareham.co.uk.  
*"Blue and white tin glazed pottery and boulder like bird baths."*

## 'TOO LONG IN THE LOBBY'

**2 - 5 September**

Make Tank, 3 - 5 Paris Street, EXETER, EX1 2JB. Thursday 12noon - 8pm, Friday and Saturday 12noon - 6pm, Sunday 12noon - 4pm. 07881 438436 / carolinesaunders.art.  
*"Responses to the uncertainty of the past year of lockdowns by artists Caroline Saunders, Amanda Jewell, Ros Bason, and Frankie Williams."*

# BATH SCHOOLS OF ART + DESIGN MA DEGREE SHOW

## COURSES

Ceramics  
Curatorial Practice  
Fashion & Textiles  
Fine Art  
Visual Communication

## PUBLIC VIEW

Sat 25 - Sun 26 Sep · 10am - 4pm  
Mon 27 - Thu 30 Sep · 10am - 8pm  
Locksbrook Campus, Bath, BA1 3EL

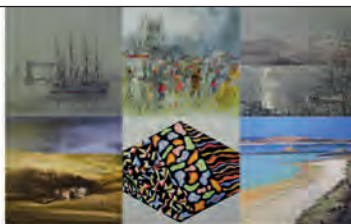
## FREE BOOKING REQUIRED

book your free ticket now:  
www.bathspa.ac.uk/ma-degreeshow



Image: Yulan Wang





## 110th Annual Paintings Exhibition

23–30 October 2021

Open every day 10.00am–4.45pm  
The Red Lodge, Park Row, Bristol, BS1 5LJ  
Entrance in Lodge Street

Entrance Free | Members' Paintings for Sale

[www.bristol1904arts.org](http://www.bristol1904arts.org)

Twitter @1904arts

Instagram @bristol1904arts

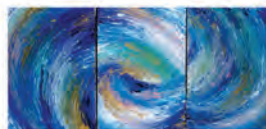
Facebook facebook.com/B1904A

Email admin@bristol1904arts.org



## Open Studios and Online Arts Trail in North-West Wiltshire

11 - 19 September 2021



The Peacock Arts Trail is your chance to discover the work of 70 fabulous artists and craftspeople in and around Corsham, Chippenham, Box and Melksham.

Explore open studios, group exhibitions in Corsham and Chippenham town centres, and an online extravaganza of events, demos and artist profile pages.



[www.peacockartstrail.co.uk](http://www.peacockartstrail.co.uk)

Images clockwise from top: Chloe Pinheiro, Charles Minty, Mrs Mosley's Posies, Ali Haynes



## URBAN SPACES

A stimulating exhibition by 10 members of Wesca

23rd, 24th, 26th - 31st October, 10.30am - 4pm  
2 West Walks, Dorchester DT1 1RE  
01305 260215



## EVOLVER MAGAZINE

DEADLINE FOR NEXT ISSUE

November and December 2021

THURSDAY 7 OCTOBER



## Hollingshead Studio Gallery

Artworks by Josh Hollingshead and Azita Heartly  
25 Commercial Road, Swanage, BH19 1DF  
[joshhollingshead.net](http://joshhollingshead.net) • 07512 173840

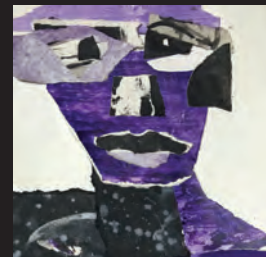
HAUSER & WIRTH  
SOMERSET

## EDUARDO CHILLIDA

UNTIL 3 JAN 2022

DURSLADE FARM, DROPPING LANE,  
BRUTON, SOMERSET BA10 0NL

[WWW.HAUSERWIRTH.COM](http://WWW.HAUSERWIRTH.COM)



## 'Strange Truth'

LIN WALKER • ROB NEELY • JUNE RIDGWAY • PERCY LIZZARD • ZARA MCQUEEN

The Gallery, Shaftesbury Arts Centre, Bell Street, Shaftesbury, Dorset SP7 8AR

Wednesday 15th - Tuesday 28th September, 10am - 4pm daily • 01747 854321 • 07749 048295 • [shaftesburyartscentre.org.uk](http://shaftesburyartscentre.org.uk)





## The Cottage Studio

NORDEN, BH20 5DT  
Tel: 01929 480472



Andrew Thomas SWAc - Sculpture • Phil Hill - Painting

Mike Topham - Mixed Media • Tim Rose - Ceramics

**Purbeck Art Weeks • Open Studio 13**

11 - 26 SEPTEMBER

Open daily • 10am - 4pm



**PURBECK ART WEEKS  
FESTIVAL**

**11-26 September**

OPEN STUDIOS  
EXHIBITIONS  
EVENTS

hub and collective  
exhibition at

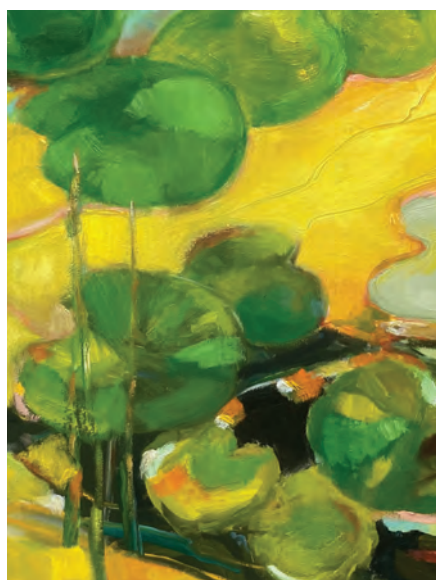
**ROLLINGTON BARN**

Download our Festival Brochure at  
[www.purbeckartweeksfestival.co.uk](http://www.purbeckartweeksfestival.co.uk)

2021



OPEN DAILY  
10.00 to 5.00  
FREE  
ENTRANCE



## Brushes with Colour

Dorset artists Heather MacGregor, Dick Hewitson and Heather Gibbons respond to 'colour' through shape, line, pattern and texture

**13 - 27 September**

**Fine Foundation Gallery**

Durlston Castle, Durlston Country Park, Dorset BH19 2JL

10.30am - 5pm



# Visual Arts

## BEKI WILLS: 'CONVERGENCE'

**3 - 5 September**

Hours, 10 Colston Yard, BRISTOL, BS1 5BD. Friday 6 - 9pm, Saturday 10am - 4pm. 07766 054659 / hours-space.com. "Extreme doodles."

## 'ACTIVE AND IN TOUCH, PORTRAYAL OF A PANDEMIC'

**3 - 12 September**

Round Tower Gallery, Black Swan Arts, 2 Bridge Street, FROME, BA11 1BB. Wednesday - Sunday 10am - 4pm. blackswanarts.org.uk.

## JACKIE PHILIP

**3 - 25 September**

David Simon Contemporary, 37 High Street, CASTLE CARY, BA7 7AW. Monday - Saturday 10am - 5.30pm. 01963 359102. Paintings.

## BS9 ARTS TRAIL

**4 and 5 September**

Various venues in Henleaze, Stoke Bishop and Westbury-on-Trym, BRISTOL, BS9. 11am - 5pm. bs9arts.co.uk.

## 'MORE TOGETHER THAN ALONE'

**4 September - 21 November**

East Quay Gallery, East Quay, WATCHET, TA23 0AQ. 10am - 4pm. eastquaywatchet.co.uk. "The opening exhibition at Watchet's East Quay Gallery explores the communal bonds that make a community."



## THE ROYAL SOCIETY OF PAINTER - PRINTMAKERS

**6 September - 7 October**

The Atkinson Gallery, Millfield School, STREET. 01458 444322. "This exhibition features a range of print styles and techniques, including monoprint, relief printing, intaglio, screen print, lithography and digital print."

Above: Michelle Griffiths 'Synchronicity IV' (Monoprint)



NICK HALS 'RED, YELLOW, BLUE'

## Purbeck Art Weeks 2021 Open Studios

"Purbeck Art Weeks Festival and artists are delighted to be back in action! The PAW collective exhibition at Rollington Barn (near Corfe Castle), along with our Open Studios, showcases the talent of Purbeck artists. Paintings and prints rub shoulders with ceramics, photography, woodcraft and greetings cards. Here visitors can get a taster of what they may discover in the Open Studios. Artwork can be purchased and taken away on the day - and there is much to fall in love with! Rollington Barn also acts as a hub for the Festival. It's an excellent place to plan your art trail over a light lunch or coffee in Love Cake's courtyard café. You will find handy Open Studio maps to pick up. You may also want to drop into the Byre to see the work of Purbeck Young Artists, or add your own reflections to our *Renewal Tree* - an interactive installation that will evolve over the fortnight. Our events include *Mapping Time*, an illustrated talk by Mary Sparks about how the landscape of eastern Purbeck has changed over time, and the young Holywell Wind Trio playing music by Mozart, Bozza and others."

**11 - 26 September:** Various locations in PURBECK, Dorset. purbeckartweeksfestival.co.uk.

## 'SEW WHAT!'

**7 - 11 September**

Wells Museum, 8 Cathedral Green, WELLS, BA5 2UE. 10am - 5pm. wellsmuseum.org.uk. Textiles.

## EDWARD KELLY: 'THE ADAM AND EVE PAINTINGS'

**7 September - 1 October**

Artwave West, MORCOMBELAKE, DT6 6DY. Tuesday - Saturday 10am - 5pm. artwavewest.com.

## KARREN BURKETT

**8 - 14 September**

The Gallery, Shaftesbury Arts Centre, Bell Street, SHAFTESBURY, SP7 8AR. Monday - Saturday 10am - 4pm. 01747 855243. Mixed media.

## 'ARTBEAT'

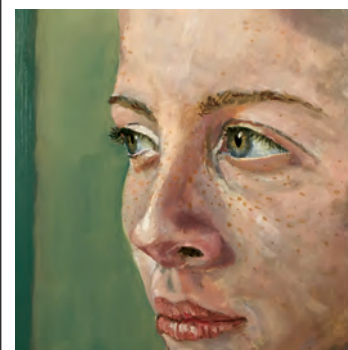
**10 - 19 September**

Kennaway House, Coburg Road, SIDMOUTH, EX10 8NG. 10am - 5pm. kennawayhouse.org.uk. "Affordable art by East Devon artists."

## JANE EATON: 'THE OAK TREE'

**10 September - 22 October**

Trowbridge Town Hall Arts, Market Street, TROWBRIDGE, BA14 8EQ. Monday - Saturday 10am - 4pm. trowbridgetownhall.com.



## PEACOCK ARTS TRAIL

**11 - 19 September**

Locations in, and around, BOX, CORSHAM, CHIPPENHAM and MELKSHAM. Wiltshire. peacockartstrail.co.uk. "Visit fascinating artists' studios, enjoy group exhibitions and, new for 2021, sample video demos and chats, gallery pages and blogs via the virtual programme."

Above: Charlie Graham



## Boilerhouse Gallery

A wonderful variety of work in an inspiring location

Open Tuesday to Saturday 10am - 5pm and daily throughout Purbeck Art Weeks  
Open Studios Venue 15

Sandy Hill Lane, Corfe Castle, Dorset BH20 5JF  
boilerhousegallery.co.uk





## THE 10 PARISHES FESTIVAL

11 - 19 September

Various locations in and around WIVELISCOMBE. 01984 624564 / 10parishesfestival.org.uk.

## CHERYLENE DYER: 'DROP THE WORLD'

11 - 25 September

Hybrid Gallery, 51 High Street, HONITON, EX14 1PW. Tuesday - Saturday 10am - 5pm. 01404 43201.

## '5 ELEMENTS'

11 - 25 September

The Slade Centre, The Square, GILLINGHAM, SP8 4AY. Tuesday - Saturday 9am - 4pm. 07775 431652 / sladecentre.com. "Works by painters Pennie Elfick and Hilary Turnbull, photographer and textile artist Kirsten Palmer, with glass by Phil Drew and his partner Ben, and drawings and assemblages by Andrew Palmer."



## DEBBIE LUSH

11 - 25 September

Hybrid Gallery, 51 High Street, HONITON, EX14 1PW. Tuesday - Saturday 10am - 5pm. 01404 43201.

## 'CLIMATE CHANGE OPEN'

11 - 27 September

Sou'-Sou'-West Arts Gallery, Symonds Estate, BRIDPORT, DT6 6HG. 10.30am - 4.30pm. 01308 301326 / sousouwest.co.uk. "To complement the 'Inside Out Dorset' project being held on the Symonds Estate, an exhibition of work that focuses on climate change in its broadest sense."

## JOHN MADDISON

11 - 29 September

The Jerram Gallery, Half Moon Street, SHERBORNE, DT9 3LN. Tuesday - Saturday 9.30am - 5pm. 01935 815261 / jerramgallery.com.



SOPHIE FRETWELL

## B-Side Festival 2021

Cementing its status as one of the most unusual and innovative contemporary art festivals in the UK, b-side is back with an exciting, playful, and challenging programme led by Portland-based and world-renowned artists including Creatives Garage, Olivia Furber, and Ramzi Maqdisi.

Energising the cultural scene in Dorset, b-side Festival presents work from South West based creatives alongside new and established artists from across the UK and beyond. With the artwork commissioned via an international open call over two years ago, allowing the artists the time and creative space to produce site-responsive works, the festival encourages artists to take risks and make resonant connections with the Isle of Portland.

Aiming to ignite thought-provoking discussions, this four-day festival will feature showstopping light projections, audio installations, guided tours, sculpture, film, and immersive workshops.

**9 - 12 September:** Locations throughout PORTLAND, Dorset. b-side.org.uk

## 'SIX BRISTOL ARTISTS'

11 September - 12 October

Clifton Contemporary Art, 25 Portland Street, CLIFTON, Bristol, BS8 4JB. Tuesday - Saturday 10am - 5pm. cliftoncontemporaryart.co.uk.

## ANGELA KNAPP

11 September - 23 October

ACE Arts, Market Place, SOMERTON, TA11 7NB. Tuesday - Saturday 10am - 5pm. 01458 273008 / acearts.co.uk. "New stitched work."

## 'BRUSHES WITH COLOUR'

13 - 27 September

Fine Foundation Gallery, Durlston Castle, Durlston Country Park, SWANAGE, BH19 2JL. 10am - 5pm. 01929 424443 / durlston.co.uk. "Dorset artists Heather MacGregor, Dick Hewitson and Heather Gibbons respond to 'colour' through shape, line, pattern and texture."

## 'FOSSILS, FISH AND FEATHERS'

14 September - 24 October

Rotunda Gallery, Lyme Regis Museum, Bridge Street, LYME REGIS, DT7 3QA. Monday - Saturday 10am - 5pm, Sunday 10am - 4pm. £5.95. 01297 443370 / lymeregismuseum.co.uk. "Watercolours by Trisha Hayman."

## 'STRANGE TRUTH'

15 - 28 September

The Gallery, Shaftesbury Arts Centre, Bell Street, SHAFTESBURY, SP7 8AR. Monday - Saturday 10am - 4pm. shaftesburyartscentre.org.uk. "Five Shaftesbury artists - Percy Lizzard, Zara McQueen, Lin Walker, June Ridgway, and Rob Neely - present a feast of contemporary fine art."

## VAROSHA: 'BODY OF WORK'

17 - 22 September

6 Leonard Lane, BRISTOL, BS1 1EA. Friday - Sunday 11am - 6pm, Monday 1 - 6pm, Tuesday and Wednesday 11am - 6pm. 07971 889767 / varosha.co.uk. "Studies and paintings from the periods of lockdown, isolation and reflection."

## 'OPTIC NERVE'

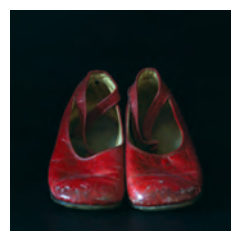
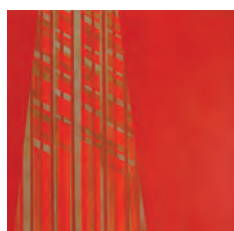
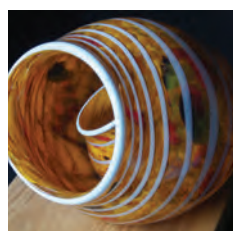
17 - 27 September

The Gallery Upstairs, Upton Country Park, Poole Road, POOLE, BH17 7BJ. 10am - 5pm. 01202 775304 / thegalleryupstairs.org.uk. Paintings by Pam Marshall, Rob Adams, Sally Holland and Heather MacGregor.

## 'CRISS CROSS: A KIND OF MUSIC'

17 September - 2 October

Wells and Mendip Museum, 8 Cathedral Green, WELLS, BA5 2UE. Monday - Saturday 10am - 4pm. wellsmuseum.org.uk. Drawings and prints by Martin Cody and Tony Martin.



## 5 Elements

Phil and Ben Drew, Pennie Elfick, Hilary Turnbull, Andrew Palmer, Kirsten Palmer  
11 - 25 September



The Slade Centre, The Square, Gillingham, Dorset SP8 4AY • Tuesday - Saturday 9am - 4pm • 07775 431652 • sladecentre.com



# Visual Arts

## THE ARTS QUARTER OPEN STUDIOS

**18 September - 3 October**  
The Arts Quarter, The Lippiatt,  
CHEDDAR, BS27 3QP. 10am - 3pm.  
01934 744806 / theartsquarter.com.

## THE SALON COLLECTIVE

**18 September - 30 October**  
Lighthouse, 21 Kingland Road,  
POOLE, BH15 1UG. Tuesday -  
Saturday 10am - 9pm. 01202  
280000 / dorsetvisualart.org.  
*Drawings, paintings, prints and  
sculpture.*

## BOURNEMOUTH ARTS CLUB

**18 September - 31 October**  
Red House Museum, Quay Road,  
CHRISTCHURCH, BH23 1BU. 10am -  
5pm. bournemouthartsclub.co.uk.  
*"100th annual exhibition."*

## RITA BROWN

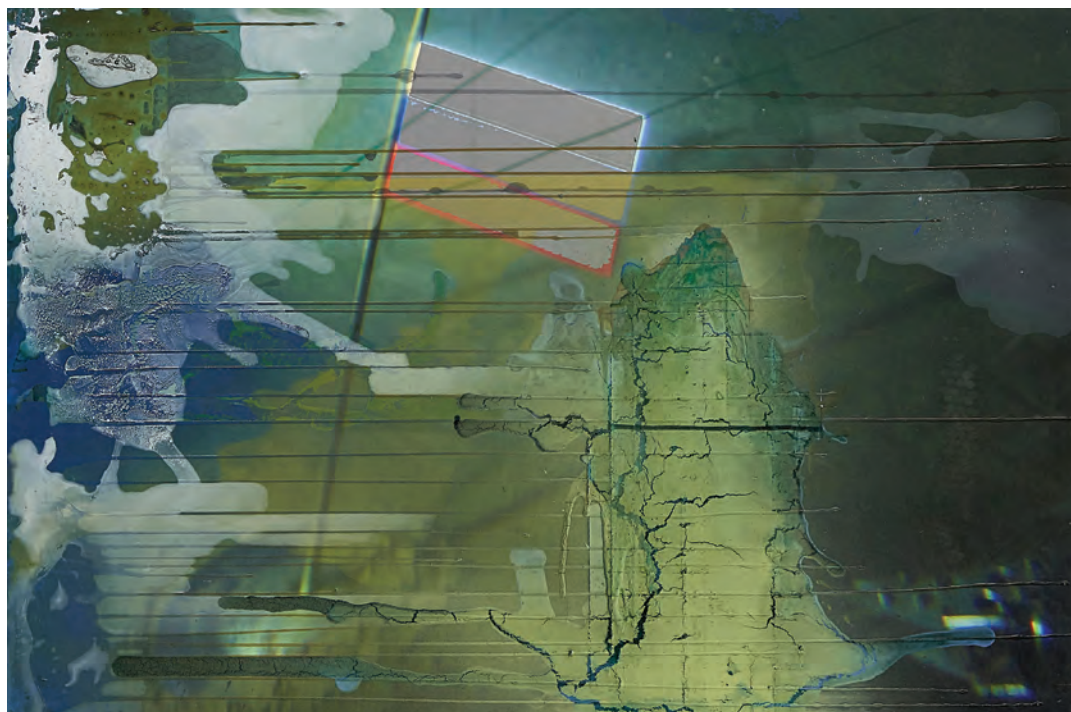
**20 September - 3 October**  
Sou'-Sou'-West Arts Gallery,  
Symonds Estate, BRIDPORT,  
DT6 6HG. 10.30am - 4.30pm. 01308  
301326 / sousouwest.co.uk.



## 'PICTURES FOR THE BEEHIVE'

**21 and 22 September**  
St Giles House, WIMBORNE ST  
GILES, BH21 5NA. 11am - 3pm.  
picturesforthebeehive.org.uk. *"An  
unusual collection of contemporary  
pieces donated by 28 artists to  
raise money for The Splash  
Appeal."*

Above: Stuart Semple 'If I Should  
Die Tonight'



Detail of 'WE SAW IT COMING ALL ALONG 1 & 2' (Mixed media on archive print on board, 2019)

## Mariele Neudecker: Sediment

"Sediment brings together three decades of work by celebrated German artist Mariele Neudecker. Landscape, the deep sea, the Arctic, environmental concerns and lockdown all have a presence in this major solo exhibition. Sediment brings together three decades of work by celebrated German artist Mariele Neudecker, who works at the crossover of art and science. Exploring topics such as mapping, perception, the invisible, painting and the history of art, her multimedia practice incorporates sculpture, video, painting, photography and sound."

**Until 24 October:** Hestercombe Gardens, CHEDDON FITZPAINE, Taunton, TA2 8LG. 11am - 5pm.  
01823 413923 / hestercombe.com.

## RUTH PIPER: 'EMBLEMS OF HOPE'

**22 September - 7 November**  
Bishop's Eye Wine Bar, 12 Market  
Place, WELLS, BA5 2RB. Monday  
9am - 7pm, Tuesday and  
Wednesday 9am - 8pm, Thursday -  
Saturday 9am - 10pm. 01749 938180  
/ bishopseye.com. *"Ruth's paintings  
are dark romanticised composite  
landscapes, with occasional  
undertones of unsettling nocturnal  
activities, imagined or observed in  
various locations at different  
times."*

## EMMA HOUSLEY: 'BLISS'

**23 September - 18 October**  
Heart of The Tribe Gallery, 74 High  
Street, GLASTONBURY, BA6 9DZ.  
11am - 5pm. 01458 832167 /  
heartofthetribegallery.com.  
*"Abstract paintings representing  
intense physical and emotional  
experiences."*

## CHEDDAR ARTISTS AUTUMN EXHIBITION

**25 and 26 September**  
Village Hall, Church Street,  
CHEDDAR, BS27 3RB. 11am - 4pm.  
cheddarartists.co.uk.

## SARAH ROSS-THOMPSON

**25 September - 25 October**  
Gallery On The Square, Queen  
Mother Square, DORCHESTER, DT1  
3BL. Monday - Saturday 9.30am -  
5pm; Sunday 11am - 4pm. 01305  
213322. *Collagraphs.*

## 'SANCTUARY'

**29 September - 5 October**  
The Gallery, Shaftesbury Arts  
Centre, Bell Street, SHAFTESBURY,  
SP7 8AR. Monday - Saturday 10am -  
4pm. shaftesburyartscentre.org.uk.  
*Paintings by Rachel Sargent and  
poetry by Catherine Simmonds.*

Calling all Dorset artists,  
designers, makers, filmmakers  
and galleries

Become a member of  
**DORSET VISUAL ARTS**  
or renew your membership at  
**dorsetvisualarts.org**

Full details of our membership options and  
benefits can be found on the website



Calling all Dorset artists,  
designers, makers, filmmakers  
and galleries

Sign up for  
**DORSET ART WEEKS 2022**  
from 1 November at  
**dorsetvisualarts.org**

Applications close 1 January 2022



# Keith Rogers BEYOND THE GOLDEN REEDS

BRIDPORT ARTS CENTRE  
ALLSOP GALLERY

LARGE SCALE · SEMI-ABSTRACT · EXPRESSIVE PAINTINGS

16 October - 13 November



10am - 4pm Tuesday - Saturday

South Street, Bridport, Dorset, DT6 3NR, 01308 427183  
www.keithrogers.co www.bridport-arts.com

BRIDPORT  
ARTSCENTRE



Dorset  
Council



## Paintings by Percy Lizzard

THE GALLERY

Shaftesbury Arts Centre, Bell Street, Shaftesbury, SP7 8AR

27 October to 2 November 2021

Open every day 10 till 4

Enquiries: 07979 590790

## Visual Arts



'WHERE THE MIST RISES NO. 6'

## Where The Mist Rises

"Based on satellite photographs and historic maps of the Dorset coastline, Annie Ward's abstract paintings explore those mutable spaces where the land meets the sea."

**27 October - 5 December:** Rotunda Gallery, Lyme Regis Museum, Bridge Street, LYME REGIS, DT7 3QA. Monday - Saturday 10am - 5pm, Sunday 10am - 4pm. £5.95. 01297 443370 / lymeregismuseum.co.uk.



### 'INTO THE COLOUR'

**25 September - 31 October**

The Whittox Gallery, Whittox Lane, FROME, Somerset BA11 3BY.

Tuesday - Saturday 9am - 4pm.

07712 523734 /

thewhittoxgallery.com. Paintings by Jenny Morse (above) and Susanna Lisle.

### 'ART IN BROADSTONE'

**30 September - 12 October**

The Gallery Upstairs, Upton Country Park, Poole Road, POOLE, BH17 7BJ.

10am - 4pm. 01202 127770 /

broadstoneartsociety.com.

### MARK FIREEYE: 'GREEN WOODCRAFTS'

**1 - 30 October**

The Creative Gallery, St John's Hill, WAREHAM, BH20 4NB. Monday - Saturday 10am - 5pm. 01929 551505 / creativegallerywareham.co.uk.

"Character bowls, platters and spoons from locally sourced woods."

### BATHEASTON ART TRAIL

**2 and 3 October**

Various locations in BATHEASTON, near Bath. 11.30am - 5.30pm. 07968 697451 / growbatheaston.co.uk/art-trail.

### ZEE JONES

**2 - 17 October**

Sou'-Sou'-West Arts Gallery, Symonds Estate, BRIDPORT, DT6 6HG. 10.30am - 4.30pm. 01308 301326 / sousouwest.co.uk. "Zee's work is confident and strong with a compelling use of structure and colour."

### IRENE JONES

**2 - 23 October**

Hybrid Gallery, 51 High Street, HONITON, EX14 1PW. Tuesday - Saturday 10am - 5pm. 01404 43201.

### 'TESSA - TEACHER, FRIEND, PRINTMAKER AND PAINTER'

**2 - 23 October**

The Slade Centre, The Square, GILLINGHAM, SP8 4AY. Tuesday - Saturday 9am - 4pm. 07775 431652 / sladecentre.com. "A celebration of the work of artist Tessa McIntyre. An opportunity to enjoy her work and share memories."

### RUSSELL COULSON: 'LINE & TONE'

**4 - 17 October**

Sou'-Sou'-West Arts Gallery, Symonds Estate, BRIDPORT, DT6 6HG. 10.30am - 4.30pm. 01308 301326. "Russell's seascapes are graphic, stylised and colourful, creating vibrant patchworks of tone and movement."

### 'COLOURFUL FRIENDS'

**5 - 23 October**

Creative Innovation Centre, Paul Street, TAUNTON, TA1 3PF. Tuesday - Saturday 10am - 4pm. 01823 337477. Paintings by Liz Hood, Jane Brossard, Sara Dudman, Janet Glynn Smith, Lizzie Induni, Rossanne Lee-Bertram, and Elizabeth Earley.

### MAGGIE WYMAN AND MAXINE CHANDLER

**6 - 12 October**

The Gallery, Shaftesbury Arts Centre, Bell Street, SHAFTESBURY, SP7 8AR. Monday - Saturday 10am - 4pm. 01747 855243.

### 'CREATIVE LAB'

**6 - 30 October**

Yeovil Art Space, Unit 23, Vicarage Walk, Quedam Shopping Centre, YEOVIL, BA20 1EU. Wednesday - Friday 11am - 2pm, Saturday 11am - 3pm. yeovilarthouse.co.uk. "Visual dialogue between artists Clarissa Ready and Stephanie Max."



# SOMERSET OPEN STUDIOS 2021

JULIA THOMPSON (VENUE 64)





Somerset Open Studios 2021

18 September - 3 October



**'Now Comes The Forgetting'**

Oil on canvas, 110 x 120 cm

# Philip Davies

P A I N T I N G

Venue 182

Fousham Cottage, Huish Moor, near Wiveliscombe, Taunton, TA4 2EZ

10am - 4pm

Closed Mondays and Thursdays

01984 624876

[phildaviesart.com](http://phildaviesart.com)



# Somerset Open Studios 2021

There is something about suitcases that is always very intriguing. Like trains heard in the distance, they suggest travel, discovery and secrets. Inch by IN:CH a group of eleven artists have come together to create a travelling exhibition, which aims to bring art to lots of disparate places, rather than always expecting people to come to them. It is an inspired project and a really serious attempt to engage communities who might never feel tempted to cross the threshold of a gallery. There is a frisson of excitement when a dusty old leather suitcase is discovered, neglected and long forgotten in a loft. It might contain old photos, documents and secret histories belonging to their original owners. The cases being used by Inch by IN:CH have been sourced from all different places and for the artists they are in the nature of 3D found objects which have become repositories for a new set of references and memories. During Somerset Open Studios, the final stop on their journey will be The Gauge Museum at Bishops Lydeard Station (venue 16), where they will be on show in the 'unique Victorian sleeping car, with suitcase artworks spilling out onto the platform'. The artists will also be there, continuing their programme of free drawing workshops.

This year a huge array of artists and craftspeople will be welcoming people into their studios. Painter Pennie Elfick is sharing a space with printmaker Jane Rollason (venue 63). Jane's work covers many areas of interest from fish to still life to landscape often incorporating detritus found on the beach into the finished prints. Pennie's work is focused on the subtle changes at the edge where colours meet. In her recent paintings bright pink or orange touch grey creating the illusion of a third hue where the shapes touch.

David Parfitt (venue 119) has always had a passion for the landscape around his home in Somerset. His walks take him through the wetlands and up into the Mendip hills with the views across the Somerset Levels and wherever he goes he makes drawings and little paintings. Back in the studio he translates his studies and his memories into watercolour paintings and mono-prints. His watercolours are outstanding and he is very happy to talk about his process and techniques. One of the delights of visiting him is the chance to leaf through his numerous sketchbooks.



MAYUMI BOTTEGA YU (VENUE 121)

Taking a different approach to painting, Sara Dudman (venue 4) started to use pigments from plants in 2020, making fugitive colours that faded and changed when exposed to light. They were highly unpredictable and the ephemeral nature of the works was partly a reaction to the uncertainty in the world. She now forages for wild pigments in the mud at different locations from the Severn Estuary to Cornwall. She has sourced whites from the old Leswidden china clay quarry, ochres from iron and black from Bottalack. She is fascinated by the different qualities that emerge when her

finds are mixed with different binders. The burnt sienna and magenta purples from the old Levant copper and arsenic mines have a granular texture whilst the yellows from Gunwalloe on the Lizard are creamy and opaque. During the festival Sara will be doing a series of mud painting workshops and demonstrations and hosting small discussion groups. Her studio space is in a shared building so on a visit to Sara you will find Philip Dudman's Aubrey Beardsley inspired drawings of the birds of the Blackdown Hills and geometric paintings by Michael Tarr (venue 5).



ALICE KETTLE (VENUE 134)





DAVID A PARFITT (VENUE 119)

The photographer Barry Cawston (venue 164) will be showing images of landscapes, interiors and people at the Drugstore in Axbridge. No longer a gallery it has reverted to a house and has been repainted with more 'exotic colours on the walls and feels for the first time like a lovely place to show work'. His fifteen-year-old daughter calls it 'The Magic House'. Photographs will be scattered throughout this wonderful old building built in 1450: in the kitchen, the bedrooms, in the garden (weather permitting), and in the studio. He will also be sharing a taster of his lockdown project, due to be shown next year, about a fictional character called Oscar Waits.

There are some wonderful ceramics on show this year. Nichola Hanman's exquisite raku pots have the characteristic fine lines that meander across the white surface (venue 72). These beautiful objects are fashioned through a long and tortuous, frequently heart-stopping, process, fraught with the potential for disaster. In complete contrast Nichola also makes delightful animal sculptures using the same raku clay but fired at a higher temperature so that they are frost-proof.

Richard Pomeroy's fantastically brightly coloured mugs, jugs, teapots and coffee pots are made in porcelain (venue 102). Each piece is hand-built, rather

than being thrown, so they are all unique. His making process allows him to create drinking vessels with very fine rims and they are all dishwasher and microwave safe.

Garden planters with generous voluptuous forms are Jacky Duncan's speciality (venue 35). She uses locally sourced clay and the pots are coiled and thrown on the wheel. They are fired in a wood-fired kiln using waste wood from the local wood yard. Jacky is also a small-holder breeding cattle and the two strands of her life are intertwined. Her work with clay takes precedence in the summer months when the livestock are out to grass.

Mayumi Bottega Yu (venue 121) is a textile artist. In her beautiful hand-woven pieces she has been exploiting the potential of origami folding to create faceted shapes that accentuate the play of light and shadow. Recently she has been exploring the potential of Japanese paper yarn and weaving it into sculptural objects.

Somerset Rural Life Museum (venue 134) is showing a textile project masterminded by contemporary textile artist Alice Kettle. Alice works with stitch, often making very large pieces which are figurative and narrative. "Books, poems, people, places, thoughts, fears, connections, stories" are the things that inspire her and she has made work in response to *The Odyssey* by Homer and Paolo Coehlo's *The Alchemist*. In *Thread Bearing Witness* Alice has brought together contributions of migrants that explore themes of cultural heritage and displacement

I have highlighted a small selection of what is on offer this year but there are plenty of other delights. Shave Farm (venue 94) near Bruton is a beautiful venue with a wealth of interesting studio spaces. Artists include Annie Fry and Kay Lewis-Bell who will be showing figurative paintings and Terri Hogan whose focus is on Cornish landscapes. Caroline Vitzthum (venue 175), the Ignite Somerset Artist In Residence, has been exploring the creative potential of digital technology. Her work is a response to the Climate Emergency and the environment. *Somerset Reacquainted* at Taunton Brewhouse (venue 22) brings together a group of artists who examine how artists have been affected by the events of the last year and a half, particularly the isolation. They prove how vitally important the practice and enjoyment of art is to our well being.

Fiona Robinson



PENNIE ELFICK (VENUE 63)





## 'THE SHAPE OF TREES'

### New work by Joanna Briar

18 September – 2 October



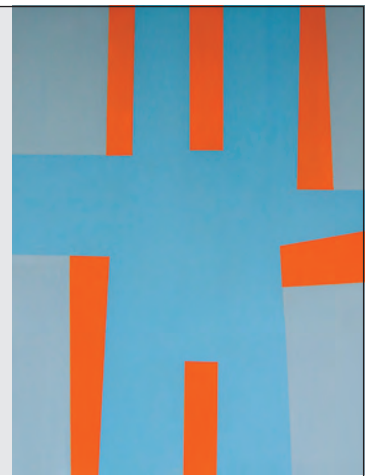
Market Place, Somerton, Somerset TA11 7NB  
Tuesday - Saturday 10am - 5pm • 01458 273008 • acearts.co.uk

## Pennie Elfick

PAINTER, PRINTMAKER,  
SCULPTOR

work that alludes to  
specific experiences but  
resolutely abstract in its  
presentation, 2010 - 2021

[pennieelfick.co.uk](http://pennieelfick.co.uk)



SOMERSET OPEN STUDIOS VENUE 63  
Open Wednesday - Sunday 11am - 6pm



## Jane Rollason

PRINTMAKER

collapsed, caught, cute,  
etchings across 25 years

[janerollasonart.com](http://janerollasonart.com)



HEART OF  
THE TRIBE

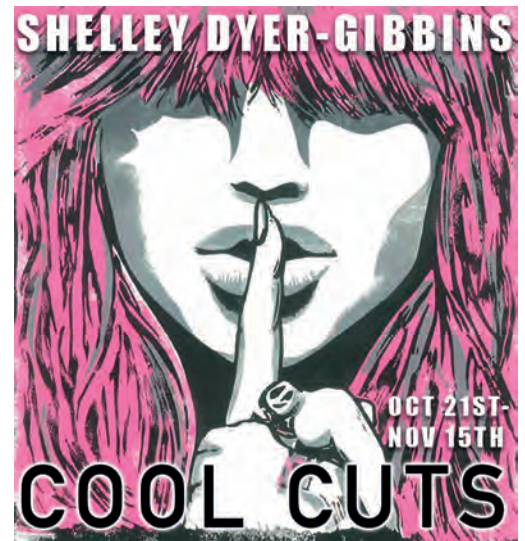
GALLERY & GARDEN

**BLISS** EMMA  
HOUSLEY  
September 23rd - October 18th



SAW Workshop residency / Open studio

TEA & COFFEE  
MONTHLY EXHIBITIONS  
TALKS & WORKSHOPS  
SOMERSET ARTISTS  
EVENT SPACE FOR HIRE



SHELLEY DYER-GIBBINS

OCT 21ST -  
NOV 15TH

**COOL CUTS**

WINTER OPEN EXHIBITION 2021  
**CALL FOR ENTRIES**

Apply online for your chance to exhibit.  
Visit the website for more information.

Entries close 13th October 2021

01458 832167

[Gallery@HeartofTheTribe.com](mailto:Gallery@HeartofTheTribe.com)

[www.HeartofTheTribe.com](http://www.HeartofTheTribe.com)

[f](https://www.facebook.com/HeartofTheTribeGallery) [i](https://www.instagram.com/HeartofTheTribeGallery) @HeartofTheTribeGallery

74 High Street, Glastonbury, BA6 9DZ



# Somerset Open Studios 2021



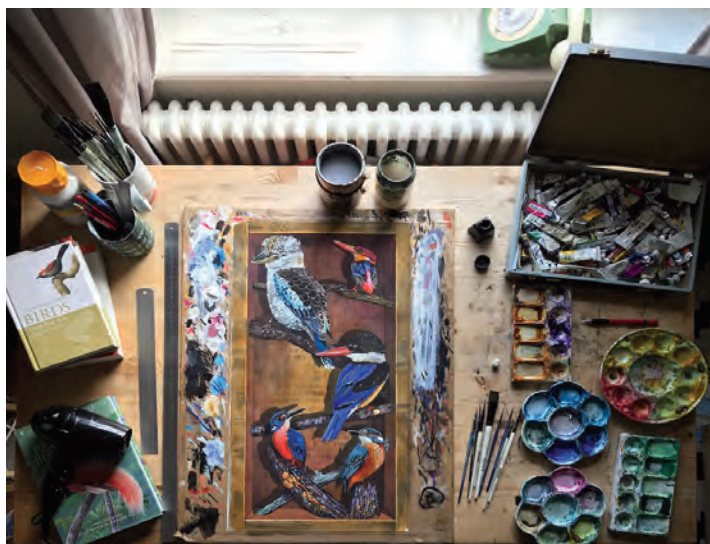
TILLY WILLIS (VENUE 10)



DAVID R ABRAM (VENUE 108)



JILL PRESTON (VENUE 46)



LEO DAVEY (VENUE 202)



INCH BY IN:CH (VENUE 36)



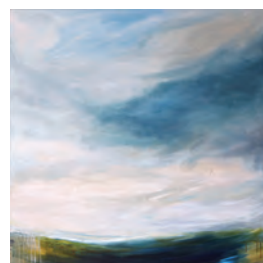
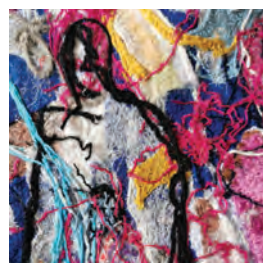
JULIA MANNING (VENUE 83)



ALEXANDRA LAVIZZARI (VENUE 7)



TERRI HOGAN (VENUE 94)



## YEOVIL CREATIVES AT YEOVIL ART SPACE

DAWN HANDY • GRAŻYNA WIKIERSKA • STÉPHANIE MAX • CLARISSA READY • JESS EGAN  
The group reflect on themes of the personal and collective human experience, the wider natural world and our impact on it



Venue 50: YEOVIL ART SPACE, Unit 23, Vicarage Walk, Quedam Shopping Centre, Yeovil, BA20 1EU  
[yeovilartspace.uk/openstudios](http://yeovilartspace.uk/openstudios)



# 18 September - 3 October

## Taunton Deane

### 1. Siddy Langley

EX15 2JW / 01884 277426

### 2. Liz Gregory

EX15 3XA / 07901 660265

### 3. Amano's Old Barn Studio

TA21 9PE / 07876 132572

### 4. Sara Dudman

TA3 7SL / 07929 158288

### 5. Michael Tarr and Philip Dudman

TA3 7SL / 01823 421596

### 6. Andy Beckly

TA21 9NH / 01823 664486

### 7. Alexandra Lavizzari

TA21 8BD / 07535 005793 / [SEE ADVERT, PAGE 12](#)

### 8. The Old Brick Workshop

TA21 9HW / 07989 465427 / [SEE ADVERT, PAGE 14](#)

### 9. Caroline McMillan Davey

TA21 0QY / 01823 400677

### 10. Tilly Willis

TA4 2AN / 01984 624459

### 11. Jane Mowat

TA4 2AT / 07946 793747

### 12. Colette Fowler-Marson

TA4 2RH / 01984 629171

### 13. Nicola Werner Pottery

TA4 3JT / 01823 400187

### 14. Carl Middleton

TA4 1LA / 01823 401302

### 15. Penny Price

TA4 1JX / 07770 740637 / 01823 400332

### 16. Inch by IN:CH

TA4 3RU / 01643 704996 / [SEE ADVERT, PAGE 12](#)

### 18. Ursula Franklin

TA4 3DR / 07770 648169

### 19. Kingston St Mary Art Exhibition

TA2 8HR / 07852 533018

### 20. The Thoughtful Potter

TA2 8RB / 07557 954773

### 21. Naomi J Kendall

TA2 6HU / 07976 360599

### 22. Somerset Reacquainted: Community

TA1 1JL / 01823 283244 / [SEE ADVERT, PAGE 16](#)

### 23. Sarah's Studio in Trull

TA3 7EP / 07909 732551

### 24. Lucy Willis

TA7 0RG / 01823 698200

### 25. Rebecca Veasey

TA7 0JL / 07980 857969

### 26. Stained Glass and Art

TA3 6JF / 07979 808990

### 27. Pallker Art Glass

TA3 6HY / 07968 285043

### 28. Iain Coiley

TA3 6NJ / 07795 344759

### 29. Andrea Key

TA3 6AT / 07756 957858

### 30. Close Ltd

TA3 6AE / 01823 480350 / [SEE ADVERT, PAGE 11](#)

## South Somerset

### 31. June Dobson

TA20 3QD / 07794 409012

### 32. Andrew Bell

TA20 3QE / 01460 234463

### 33. Holyrood Academy Art and Design

TA20 2YA / 01460 260100

### 34. John Payne

TA20 4HQ / 01460 221406

### 35. Jacky Duncan

TA20 4LA / 01460 30289

### 36. Liz West

TA18 8QX / 07539 978386

### 37. Natasha Rand

TA18 8NA / 07774 883489

### 38. Mike Chapman

TA18 8AE / 07974 281408

### 39. Goldfinch Place

TA18 7AG / 01460 929428

### 40. Emily Quince

TA18 7JW / 07483 232381 / [SEE ADVERT, PAGE 15](#)

### 41. Lucy Galloway

TA18 7HU / 07769 691443

### 42. Judith Ellis

TA18 7HY / 07747 53922

### 43. Angela Barry, Martin Harris, Jane Saint-James

BA22 9DR / 01935 864582

### 44. Fiona Bradford

BA22 9NJ / 01935 862160

### 45. West Coker Chapel

BA22 9BJ / 07767 454768

### 46. Jill Preston

BA20 2JT / 01935 471843 / [SEE ADVERT, PAGE 12](#)

### 47. Geoff Thompson

BA22 9TF / 01935 473775

### 48. Esther Jeanes

BA22 9TD / 07788 523897

### 49. Miriam Sheppard

BA20 1UX / 07717 805667

### 50. Yeovil Art Space

BA20 1EU / 07469 584632 / [SEE ADVERT, PAGE 6](#)

### 51. Christine Buckler and Margaret Wall

TA19 9QN / 01460 258822

### 52. Mal Lee

TA19 9QW / 01460 259740

### 53. The Yard at Rose Mills

TA19 9PS / 01460 52866

### 54. Robin Morrison

TA19 0BA / 07986 511615

### 55. Bronwen Coe

TA19 0QT / 01460 249579

### 56. Julia & Robert McKenzie

TA19 0SB / 07905 848027

### 57. Fabrizia Bazzo

TA19 9EF / 01460 54831

### 58. Manglehouse Artists Return

TA13 5JX / 07927 423902

### 59. Pauline Rook, Peter Thomas, Jo Mills

TA13 5JX / 01460 240644

### 60. George Hider at Eggwood

TA16 5QW / 01460 76100

### 61. David Brown

TA16 5PR / 01460 75655

### 62. Patricia Regnart

TA13 5LG / 01460 240528

### 63. Pennie Elfick and Jane Rollason

TA13 5AF / 07803 965319 / [SEE ADVERT, PAGE 5](#)

### 64. The Polishing Room

TA13 5LR / 07886 906262

### 65. Green Man Studios

TA12 6JU / 01935 823827

### 66. Lucy Hawkins

TA14 6SN / 07530 585181 / [SEE ADVERT, PAGE 12](#)

### 67. John Gammans

TA14 6RE / 01935 507406 / [SEE ADVERT, PAGE 15](#)

### 68. Chris Kampf

TA12 6DH / 01935 827836

### 69. Inspiration at Barrington Court

TA19 0NQ / 07803 582229

### 70. Sally Kent

TA10 9PZ / 07429 491241

### 71. Rosie Darrah at Brewers Cottage

TA3 6QL / 01460 282900

### 72. Nichola Hanman

TA3 6QL / 01460 281661

### 73. Sebastian Chance

TA10 0PA / 07999 366126

### 74. Nicki Hughes

TA10 0PG / 07703 052007

### 75. Heron Studio

TA10 9RQ / 07908 830502

### 76. Mandy McAllen

TA11 6HD / 01458 270093

### 77. Antonia Myatt Corr

TA11 6HW / 07870 387431

### 78. We Are The Four

TA11 6JY / 07484 864536

### 79. Jenny Graham

TA11 7PS / 07743 132157

### 80. Angela Knapp

TA11 7NB / 01458 273008

### 81. Joanna Briar at Ace Arts

TA11 7NB / 07849 400575 / [SEE ADVERT, PAGE 5](#)

### 82. Jack West at The Well House Studio

TA11 6AA / 07904 036539

### 83. Julia Manning and Paul Stubbs

TA11 6EQ / 07842 423987 / [SEE ADVERT, PAGE 12](#)

### 84. Queen Camel Old School

BA22 7NH / 07970 556684

### 85. Blaxland Workshop

BA22 7LN / 07720 840040

### 86. White Hart Studio

BA22 7DQ / 07791 089263

### 87. Bootmakers Workshop

BA9 9LJ / 07419 760737

### 88. Camilla Redfern at Kairos Art

BA9 9LL / 07740 048882

### 89. Greening The Earth Studios

BA9 9JN / 07958 432081

### 90. Sarah Ayling and Julie Jenkins

BA9 9LE / 07957 284716

### 91. Richard Howell

BA9 9JZ / 07752 172145

### 92. Roundhill Farm Studio

BA9 8HH / 07967 602584

### 93. Jo Norman

BA10 0LA / 07967 159372

### 94. Shave Farm Studios

BA10 0LG / 01749 812335 / [SEE ADVERT, PAGE 15](#)

### 95. Cockhill Studios

BA7 7NZ / 01963 351840

### 96. Max Oliver

BA7 7ET / 07816 303479

### 97. Claudia Gunton

BA7 7AH / 07446 271248

### 98. Peb Burfoot and Pat Wood

BA7 7HA / 07908 138766

### 99. Pitcombe Studio

BA10 0PE / 07787 827793 / [SEE ADVERT, PAGE 12](#)

### 100. Bruton School for Girls

BA10 0NT / 01749 814400

### 101. Angela Charles

Virtual Gallery / somersetartworks.org.uk

### 102. Richard Pomeroy

BA10 0EQ / 07850 238239

### 103. Rosemary Trestini

BA10 0DH / 07814 852780

### 104. Studio 46

BA10 0AF / 07980 280745



# Somerset Open Studios 2021

**Taunton Deane** 1 - 30

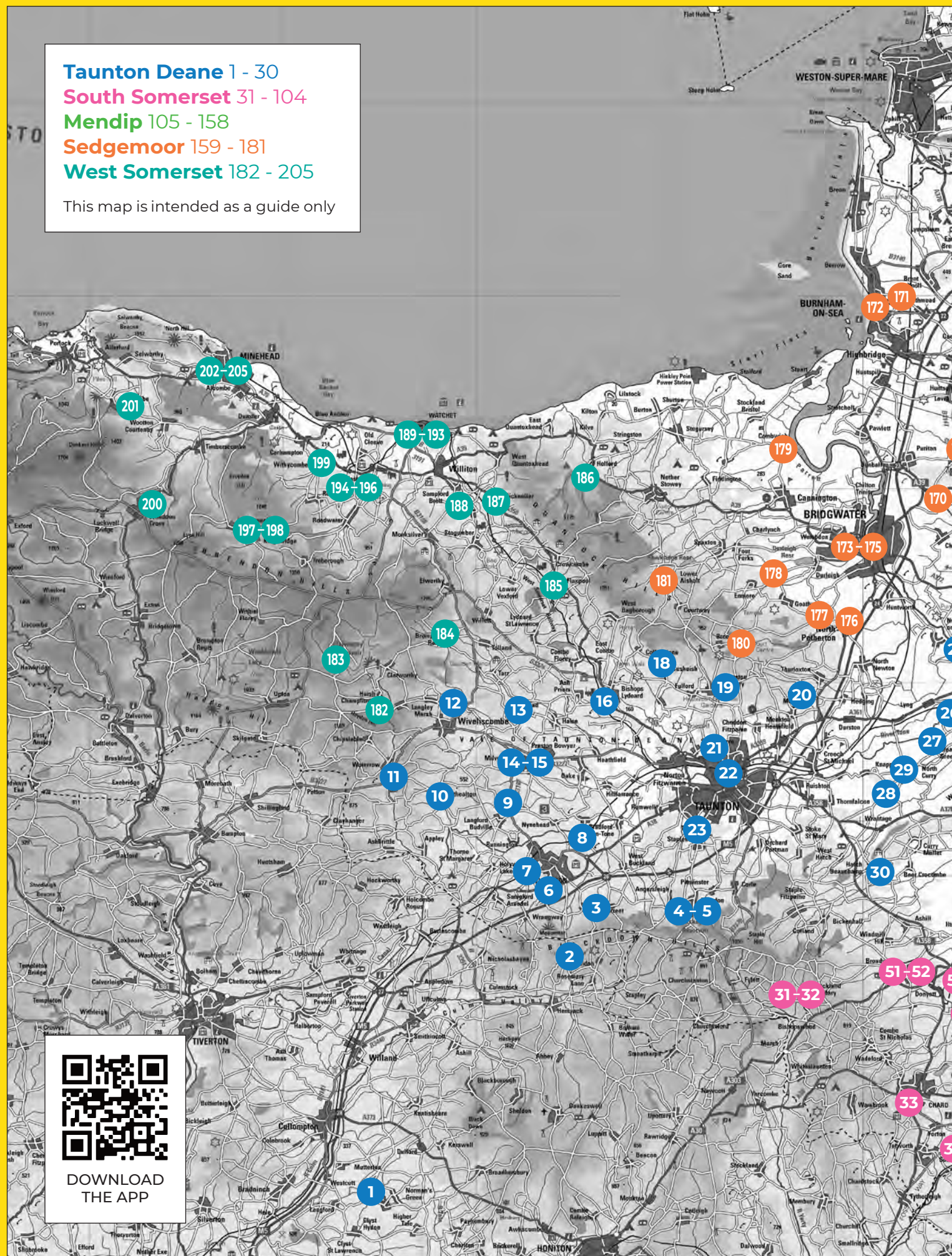
**South Somerset** 31 - 104

**Mendip** 105 - 158

**Sedgemoor** 159 - 181

**West Somerset** 182 - 205

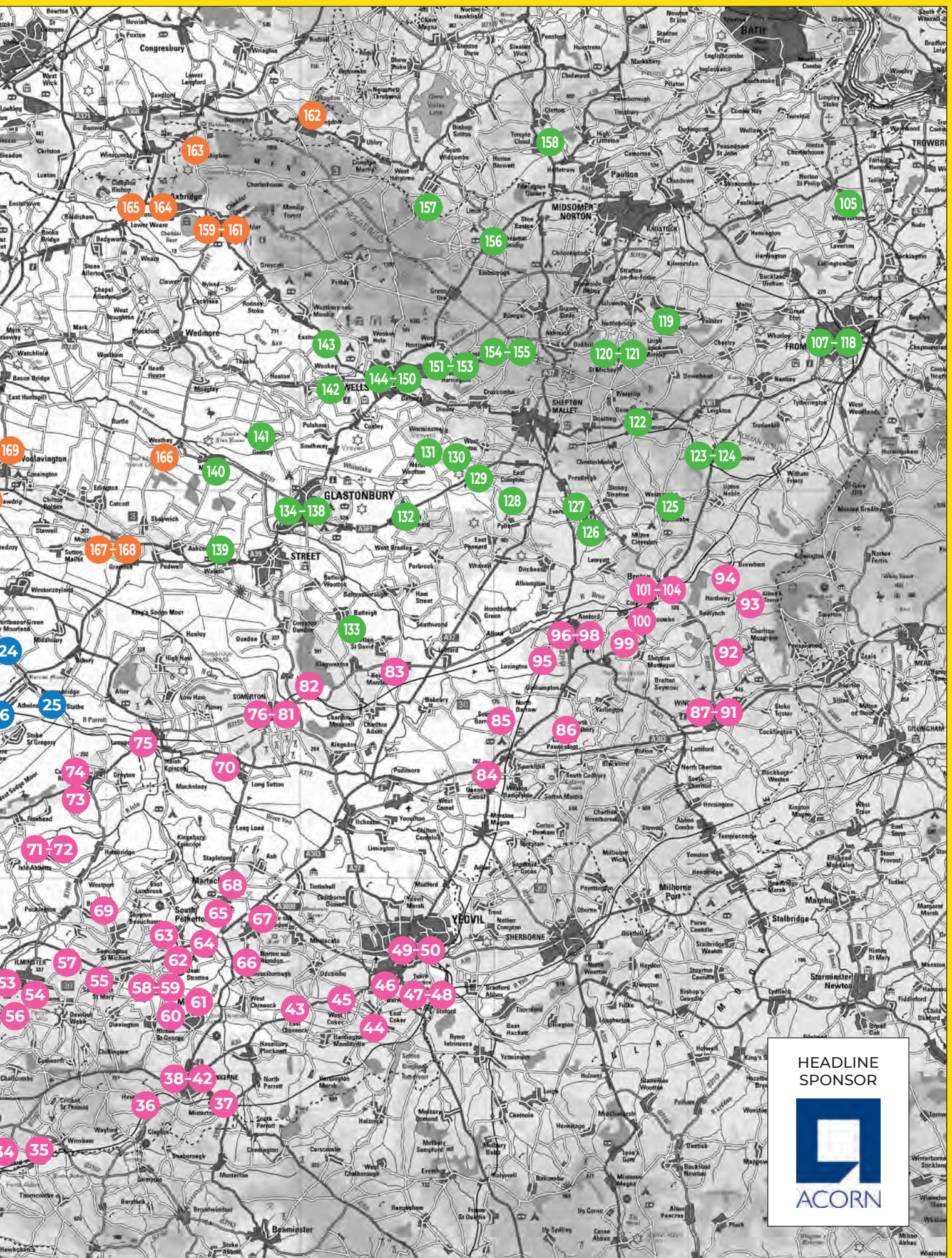
This map is intended as a guide only



DOWNLOAD  
THE APP



# 18 September - 3 October





# Somerset Open Studios 2021

## Mendip

### 105. The Woolverton Gallery

BA2 7RH / 07843 448956 / [SEE ADVERT, PAGE 16](#)

### 107. Amanda Bee

BA11 1PT / 07767 703592

### 108. David R Abram

BA11 1PT / 07814 673275

### 109. Miguel Ornia-Blanco

BA11 1PT / 07599 831775

### 110. Alexandra Brown

BA11 1PT / 07900 411620

### 111. Daniel Morley

BA11 1PT / 07946 211731

### 112. Lynn Keddie

BA11 1PT / 07792 148275

### 113. Abigail Reed

BA11 1PT / 07769 721687

### 114. Clive Walley

BA11 1JY / 07766 878532

### 115. Art at 5 Gurnville Cottages

BA11 5BD / 07966 300293

### 116. Jane Sheppard

BA11 4AG / 07854 629770

### 117. Sally Muir

Virtual Gallery / [somerstartworks.org.uk](http://somerstartworks.org.uk)

### 118. Alex Howell

BA11 4LF / 07910 320936

### 119. David A Parfitt

BA3 5NG / 07946 777631 / [SEE ADVERT, PAGE 12](#)

### 120. Gill Bliss, Cath Bloomfield, Pam Lloyd, Buffy Fletcher, Rowena Kinsman

BA3 5JQ / 01749 840065 / [SEE ADVERT, PAGE 12](#)

### 121. Mayumi Bottega Yu

BA3 5JW / 01749 840602

### 122. The Old Dairy Studio

BA4 4QL / 07969 15848

### 123. Christine-Ann Richards

BA4 4TE / 01749 850208 / [SEE ADVERT, PAGE 12](#)

### 124. Wirthwood at Redwood Rare Breeds

BA4 4SZ / 01749 850361

### 125. Batcombe and Beyond

BA4 6HE / 07811 300981

### 126. David Brayne, Jane Brayne, Harry Brayne

BA4 6JE / 01749 831006

### 127. The Itinerant Bizarrium

BA4 6LN / 07815 294233

### 128. Rowena J Draper

BA4 4HP / 07794 273978

### 129. Peter Lawrence, Lavinia Cellan-Jones

BA4 4BG / 07446 198319

### 130. Charlotte Humpston

BA4 4ER / 07976 166454

### 131. Angie Rooke

BA4 4ET / 07572 508778

### 132. Piltown Chapel

BA6 8NQ / 01749 890501

### 133. Harepits Farm Workshops

BA6 8FR / 07834 545339

### 134. Thread Bearing Witness

BA6 8DB / 01458 831197

### 135. Heart of The Tribe Gallery

BA6 9DZ / 07980 613473 / [SEE ADVERT, PAGE 5](#)

### 136. Terry Macey

BA6 8BS / 01458 898691

### 137. Michael Grevatte

BA6 9DH / 01458 834116

### 138. Megan Players

BA6 9FT / 07495 474837

### 139. Feyn Pilkington

BA16 9RW / 07958 634818

### 140. Richard Turner

BA6 9SU / 07719 593289

### 141. Tor Barn Studio

BA5 1RZ / 01458 833052

### 142. Susan Gradwell

BA5 1JU / 01749 676751

### 143. Sally Howard

BA5 1EB / 07813 002624

### 144. Jill Dunmore

BA5 2QT / 01749 678700

### 145. Derek Nice

BA5 2BW / 07966 540629 / 01749 674611

### 146. Somerset Guild of Craftsmen

BA5 2DJ / 01749 671112 / [SEE ADVERT, PAGE 15](#)

### 147. Society of Disabled Artists

BA5 2AW / 01749 673334

### 148. Heritage Courtyard

BA5 2RR / 07974 255016 / [SEE ADVERT, PAGE 16](#)

### 149. Fiona Campbell

BA5 2RR / 07515 537224

### 150. Black Dog Studio

BA5 2US / 07784 937990

### 151. Colin Harrow

BA5 3HJ / 01749 679392

### 152. Wendy Lovegrove

BA5 3QG / 07779 259190

### 153. Tom Sleight

BA5 3QG / 07706 037288

### 154. Stephanie Carlton Smith and Andy James

BA5 3HA / 07754 108416

### 155. Gilllan Flack

BA5 3HE / 01749 840408

### 156. Cathy Judge

BA3 4LL / 01761 241235 / [SEE ADVERT, PAGE 12](#)

### 157. Shortcombe Art Group

BS40 6ES / 07703 535501

### 158. Rockaway Park

BS39 5BU / 07913 657737

## Sedgemoor

### 159. The Arts Quarter

BS27 3QP / 01934 744806

### 160. Jayne Bateman

BS27 3JH / 07779 069627

### 161. Art House Cheddar

BS27 3NA / 07817 907578

### 162. Chris Holden

BS40 7TG / 07949 171250

### 163. Anne Carpenter

BS25 1TX / 07714 235538

### 164. The Drugstore

BS26 2AF / 07946 207411

### 165. Andrea Oke and Margaret Mickelwright

BS26 2EH / 07989 387779

### 166. Somerset Crafts

BA6 9TT / 01458 860426

### 167. Silver Tree Crystal

TA7 9DD / 01458 211101

### 168. Spring Farm Arts

TA7 9DD / 01458 210393

### 169. A Load of Old Scrap

TA7 8DN / 07717 202182

### 170. Jackie Curtis

TA7 8PX / 01278 685911 / [SEE ADVERT, PAGE 12](#)

### 171. Judith Champion

TA8 2DF / 01278 793873

### 172. Cora Stock

TA8 2AQ / 01278 785144

### 173. Change Matters

TA6 3DD / 07884 353276

### 174. Cara Maccallum-Hills

TA6 3DD / 07748 356228

### 175. Caroline Vitzthum

TA6 3BL / 01278 433187

### 176. Firewolf Glass and Florey Design

TA6 6RQ / 07879 813002

### 177. Huntstile Organic Farm

TA5 2DQ / 07725 278280

### 178. Teresa Davis

TA5 2AL / 01278 431267

### 179. Tom Jacobs and Alison Jacobs

TA5 2QR / 01278 652450

### 180. Davina Brien

TA5 2EH / 01823 451440

### 181. Clare DuVergier

TA5 1AP / 01278 671079

## West Somerset

### 182. Philip Davies

TA4 2EZ / 01984 624876 / [SEE ADVERT, PAGE 2](#)

### 183. Tess Armitage

TA4 1AP / 07704 507903

### 184. Magnus and Lyn Mowat

TA4 2RY / 01984 656824

### 185. Emma Duke

TA4 4AW / 07770 485822

### 186. Kate Hammond

TA5 1RZ / 01278 741306

### 187. Annabel Gaitskell Anderson

TA4 4EG / 01984 656844

### 188. Janet Lawrence

TA4 4JY / 01984 639362

### 189. East Quay

TA23 0AQ / 07963 692559

### 190. Carolyn Lefley and Molly Rooke

TA23 0AQ / 07733 115027

### 191. Jan Martin

TA23 0BN / 07905 273933

### 192. Jenny Barron

TA23 0HP / 07706 861395

### 193. Jane Hood and Emma Lumley

TA23 0JZ / 07979 901784

### 194. Lucy Large

TA23 0RG / 07943 925637

### 195. Ann Farley

TA23 0RG / 07876 730012

### 196. Angela Fine and Abigail Humphrey

TA23 0RB / 07855 705480

### 197. Georgia Weatherlake

TA23 0SH / 07547 584669

### 198. Gordon Duffett

TA23 0LF / 07704 534634

### 199. Meadow Cottage Studio

TA24 6QB / 07877 318619

### 200. Jill Davies

TA24 7AP / 01643 842958

### 201. Sarah Easter Collins

TA24 8TE / 07790 607086

### 202. Leo Davey

TA24 5UE / 07816 151433

### 203. Joanne Horrobin

TA24 8AY / 07817 261284 / [SEE ADVERT, PAGE 15](#)

### 204. Julia Rees

TA24 5UB / 01646 601768

### 205. Georgina King

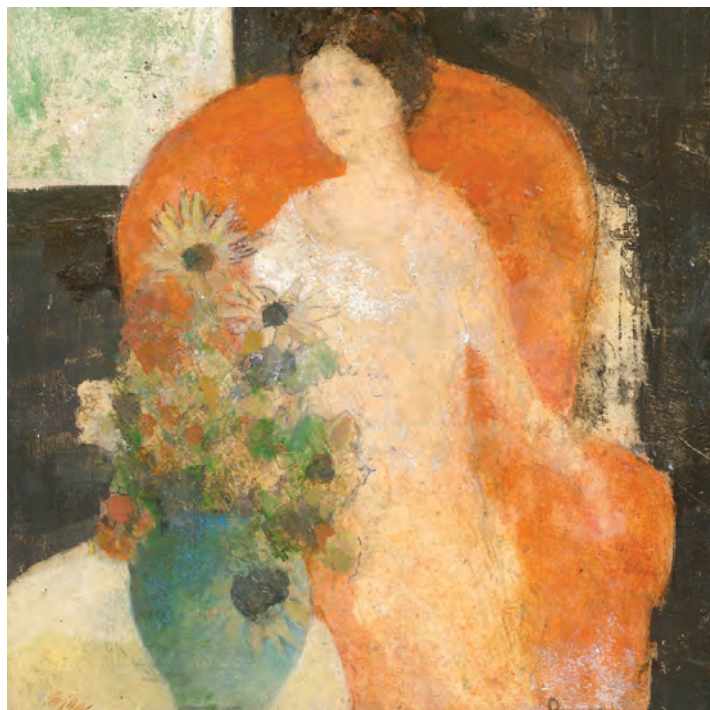
TA24 5EH / 07723 072940



18 September - 3 October



NICHOLA HANMAN (VENUE 72)



DAVID BRAYNE (VENUE 126)



JENNY GRAHAM (VENUE 79)



PAULINE ROOK (VENUES 59 + 146)

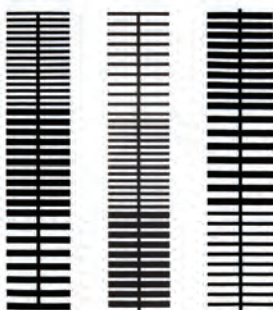
C L O S E

Scratch the Surface | Toni Davey + Andy Davey  
18 Sept - 12 Nov 2021

Somerset Open Studios | Magnus Hammick  
📍 Venue 30 | 18 Sept - 3rd Oct 2021

Visits welcome by appointment

Close House - Hatch Beauchamp - TA3 6AE  
close ltd.com info@close ltd.com 📷 @close ltd







VENUE 119

## David A Parfitt RI

Church Hall Studios, Holy Trinity Church Hall,  
Church Street, Coleford, Radstock, BA3 5NG

Opening hours: 11am to 5pm

Closed: Mon 20th, Tues 21st, Weds 22nd, Mon 27th, Tues 28th, Weds 29th

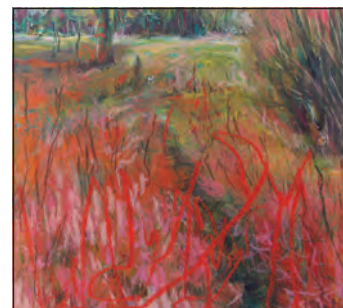


## Julia Manning

SOMERSET OPEN STUDIOS

18 September - 3 October  
Closed Mondays

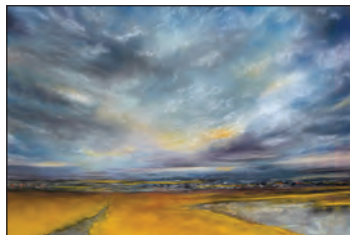
2 Rosebank  
Queen Street  
Keinton Mandeville  
TA11 6EQ  
07842 423987  
juliamanning.co.uk



## Lucy Hawkins

VENUE 66

Arksedge, Higher Street,  
Norton sub Hamdon, TA14 6SN  
@lucytipstop  
hawkins705@btinternet.com  
lucyhawkinsartwork.co.uk



VENUE 7

## Alexandra Lavizzari

painting • photography  
collages • prints • cards

108 Mantle Street, Wellington,  
TA21 8BD

Open daily 10am - 5pm  
lavizzari-art.com



An exhibition to mark  
the opening of

## PITCOMBE STUDIO

drawings and wall-hangings by

**Alexandra Drysdale**  
and **Allan Howles**

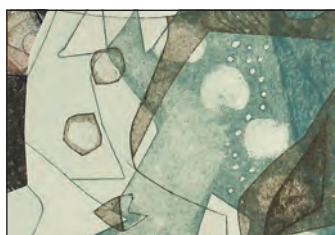
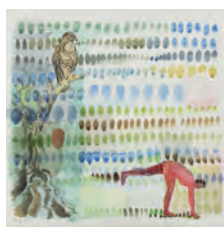
Pitcombe Farmhouse, Bruton,  
Somerset BA10 0PE

4 - 12 September

10am - 5pm (Closed Monday)

Venue 99: 28 September - 3 October  
10am - 5pm

alexandradrysdale.com



VENUE 120

## Haydon Farmhouse

Withybrook, Stoke St Michael,  
Radstock, BA3 5JQ

Open daily 11am - 6pm

*Exciting mix of disciplines:  
ceramics, knitting, jewellery  
and print / collage*

Meet The Artists

Sunday 26 September, 11am - 6pm

Residency, exhibition, free events



VENUE 16

25 September - 3 October  
11am - 5pm (closed Mondays)

**The Gauge Museum,  
West Somerset Railway,  
Bishops Lydeard, TA4 3RU**  
inchbyinch.uk

## Cathy Judge Sculpture

North Somerset Art Works 10th - 19th Sept 11am - 6pm

Somerset Open Studios 18th Sept - 3rd Oct (see below)

Chew Valley Arts Trail 9th - 10th Oct 10am - 6pm



Homedene  
High Street  
Chewton Mendip  
BA3 4LL

01761 241 235

Please check website re opening days/hours  
for Somerset Open Studios

[www.cathyjudge.co.uk](http://www.cathyjudge.co.uk)



## Jill Preston

*Bold, colourful,  
impressionistic paintings*

Venue 46: 'Drummers'

46 Lower Wraxhill Road,  
Yeovil, BA20 2JT

Open 11 - 6 (closed 20 and 27 Sept)

01935 471843

jillprestonpainter.co.uk



VENUE 123

## Christine-Ann Richards

Chapel House, High Street,  
Wanstrow, BA4 4TE

Open 11am - 5pm

Closed Monday and Tuesday

[christineannrichards.co.uk](http://christineannrichards.co.uk)

mail@christineannrichards.co.uk



## Jackie Curtis

PRINTMAKER

[jcurtisart@btinternet.com](mailto:jcurtisart@btinternet.com)

[jcurtisart.com](http://jcurtisart.com)

Twitter: @jcurtisart

01278 685911

By appointment



# Somerset Open Studios 2021

People fascinate Emily Quince. Most of her paintings are of figures but her relationship to the person being painted is crucial. She is interested in the story behind someone's life. She tells her own story unflinchingly, her work becoming a visual diary. Recently she has been incorporating printed and scribbled text evidencing her dyslexia. As with her paintings the words are a response to the world around her, occasionally a social comment but mostly observations. "It is about many ways of reading things, literally and visually."

The figures in Emily's paintings are drawn from life. Her models are her children, other family members and random people sitting chatting in the pub. She works in sketchbooks but refuses to become precious about them. They are working tools. Their pages are often torn out and the drawings themselves ripped up and reconfigured in another form in a hand made notebook. All of this becomes rich source material. Her process is immediate, a record of her life. She will seize the moment, speedily drawing one of her children when they strike a pose. She will then take that recorded moment forward and developed into a considered and fully resolved piece of work.

Paper is Quince's surface of choice and she finds it much more sympathetic than canvas as a support. It also allows her to screen-print directly onto the work. She uses an eclectic range of media from oils to household paint, water-soluble crayons and gold leaf. Once finished the paper is glued onto board rather than being framed. She feels that frames are a distraction and that the glass creates a barrier between the viewer and the work.

Emily has had a life-long love affair with paint. She did some printmaking when studying for her fine art degree at Middlesex and still has a small etching press in her studio. She combines drawing with painting because she likes "the flow" that comes with incorporating print or drawing into the painting. She feels that "drawing is still neglected and separated from painting and other forms of art".

These exciting and vibrantly drawn works with their strong charcoal markmaking look as if they have been executed at speed. Their authenticity comes from a clear sighted and deep knowledge of her subject matter - Emily's own life, her reaction to the events that affect her directly and her observations of other



'OVERWHELMED' (Oil paint, oil bars, charcoal, pencil, on paper, mounted on plywood, 60 x 84 cm)

## Emily Quince

people. These very personal works are raw and powerful. For Emily it is about "painting the essence of something rather than the reality, because photography can do that". Most of her

paintings focus on a single figure close up in a flattened space. It is easy to look at her palette and the immediacy of her drawing and reference the German Expressionists or Picasso. Emily herself cites Jean-Michel Basquiat but she would prefer not to be pinned down by any particular school of painting or artist. She is her own person and her own painter.

*Fiona Robinson*

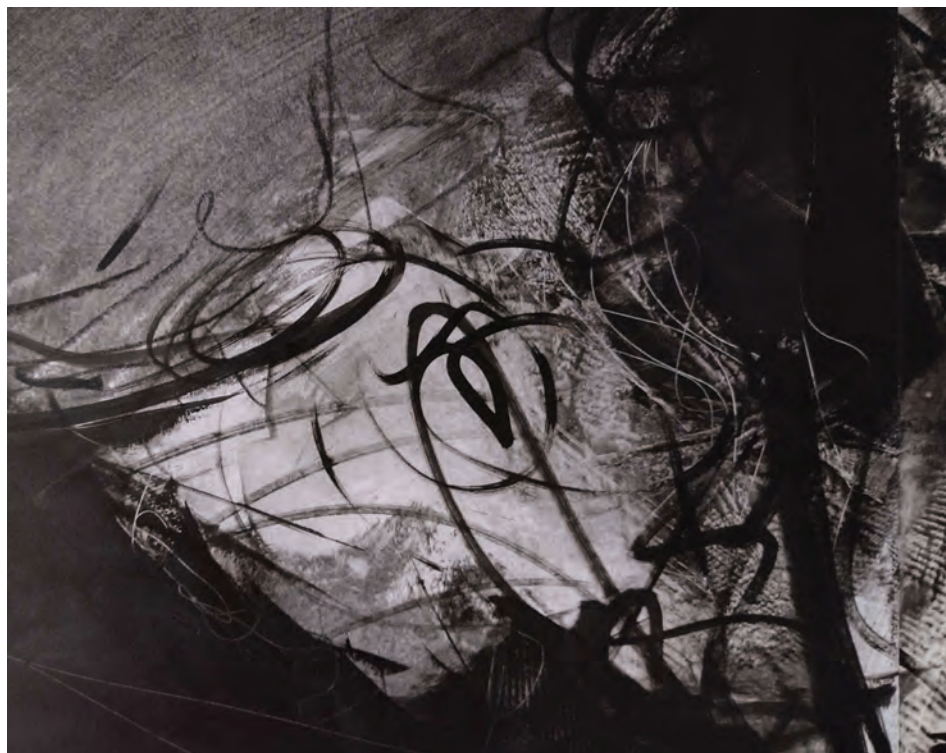


**Venue 40:** The Studio, 2 Georges Lane, Market Street, CREWKERNE, TA18 7JW. Wednesday - Sunday 10am - 3pm. 07483 232381 / emilyquinceart.com.

[somerseartworks.org.uk](http://somerseartworks.org.uk)



# Somerset Open Studios 2021



JOHN GAMMANS

## Somerset Reacquainted: Community

Community is an exhibition from a call out to more than 20 artists across Somerset to bring existing work, or create new work, to tell the story behind their reasons for making art, responding to *A New Role for the Artist*, a manifesto written by artist, author and theatre director John Fox MBE in 2018:

*A new role for the artist as catalyst, hands on facilitator and celebrant who recognises the artist in us all and liberates the innate creativity of every age through participation and collaboration. A society where re-generation is of the soul and not of economics.*

The exhibition is an extension of *Somerset Reacquainted*, a project started at the first lockdown in April 2020 with 63 artists taking part, sharing their creative process by creating work around their own local environment, communities and landscape, alongside a range of artists' networking events. It encouraged many artists in the county to gain new inspiration for their work as well as creating new connections and collaborations with each other.

*Community* invites the public to see how artists explore their process and practice and the contribution they have made to their communities, including posters, written words, work-in-progress, films and installation. Many new works present the changing mindset of artists resulting from the experience of the last 18 months.

**Venue 22:** Brewhouse Theatre & Arts Centre, Coal Orchard, TAUNTON, TA1 1JL. 01823 283244 / [somerstartworks.org.uk/somersetreacquainted/tour](http://somerstartworks.org.uk/somersetreacquainted/tour) / [thebrewhouse.net](http://thebrewhouse.net). Exhibition runs 18 September - 26 October.



Detail of 'GROUND'

## In Thread Bearing Witness

*In Thread Bearing Witness*, a major new exhibition for Somerset Rural Life Museum, themes of cultural heritage and displacement are explored through the contributions of migrants and womens' groups in Pakistan which are brought together by textile artist Alice Kettle.

The artworks on display use stitched textiles as a powerful metaphor for representing our shared humanity.

Kettle sees herself as narrator, gathering stories and imagery to raise awareness of the global refugee crisis, whilst also celebrating human dignity and endurance.

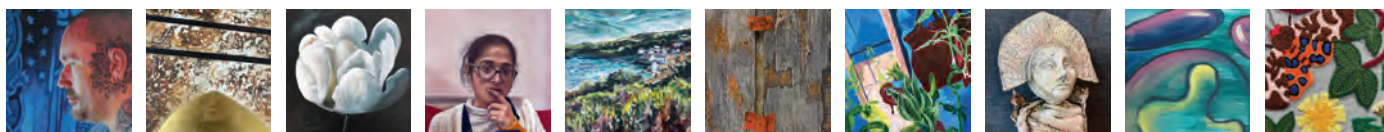
**Venue 134:** Somerset Rural Life Museum, Abbey Farm, Chilkwell Street, GLASTONBURY, BA6 8DB. Tuesday - Sunday 10am - 5pm. 01458 831197 / [srlm.org.uk](http://srlm.org.uk). Exhibition runs 11 September - 31 October.

## Somerset Open Studios 2021 • Venue #8

18 September - 3 October : Open Daily 10am - 5pm

The Old Brick Workshop's Member Artists and Invited Guest Artists will be showing a mixed exhibition of their work in the fabulous gallery and throughout the whole building. Studios will be open, and artists available to talk about their work. Tea, coffee and cake will be served in the pop up coffee bar.

[www.theoldbrickworkshop.com](http://www.theoldbrickworkshop.com) [f](#) [t](#) [i](#)



The Old Brick Workshop, Higher Poole, Wellington, Somerset, TA21 9HW : 07989 465427 : [alison@theoldbrickworkshop.com](mailto:alison@theoldbrickworkshop.com)

The Old  
**BRICK WORKSHOP**  
Space for Creative Industries

SOW  
somerset  
art works





VENUE 94

## SHAVE FARM ARTISTS

**Annie Fry**

[anniefry.co.uk](http://anniefry.co.uk)

Instagram: [annie.fry](#)

**Terri Hogan**

[terrihogan.co.uk](http://terrihogan.co.uk)

Instagram: [terri\\_hogan6938](#)

**Kay Lewis-Bell**

Instagram: [kaylewisbell](#)

**South Brewham, Bruton,  
Somerset BA10 0LG**

Open Thursday - Sunday

11am - 5pm

**NEW ONLINE SHOP**  
[www.somersetguild.co.uk/shop](http://www.somersetguild.co.uk/shop)

VENUE NO.146

# Somerset Guild of Craftsmen



18 SEPT - 3 OCT 2021



**INSPIRATION  
IN ISOLATION**

Wells 01749 671112

10am-4pm Tuesday to Saturday

[somersetguild.co.uk](http://somersetguild.co.uk)



**EMILY  
QUINCE  
ART.COM**



**Joanne Horrobin**

ENAMELLER • SCULPTOR

Somerset Open Studios 2021

Venue 203

42 Lower Park

Minehead

TA24 8AY

Wednesday - Sunday 10am - 5pm

Mobile: 07817 261284

Email: [joannehorrobin@outlook.com](mailto:joannehorrobin@outlook.com)

[joanne-horrobin.co.uk](http://joanne-horrobin.co.uk)

# JOHN GAMMANS

ABSTRACT EXPRESSIONIST

SOMERSET OPEN STUDIOS

## VENUE 67

18TH SEPTEMBER - 3RD OCTOBER

OPEN 10.30AM - 5.30PM

CLOSED MONDAYS & TUESDAYS

28 CASTLE STREET, STOKE SUB HAMDON SOMERSET. TA14 6RE



[JOHNGAMMANS.ARTIST](https://www.instagram.com/johngammans.artist)

[JOHNGAMMANS.CO.UK](http://JOHNGAMMANS.CO.UK)

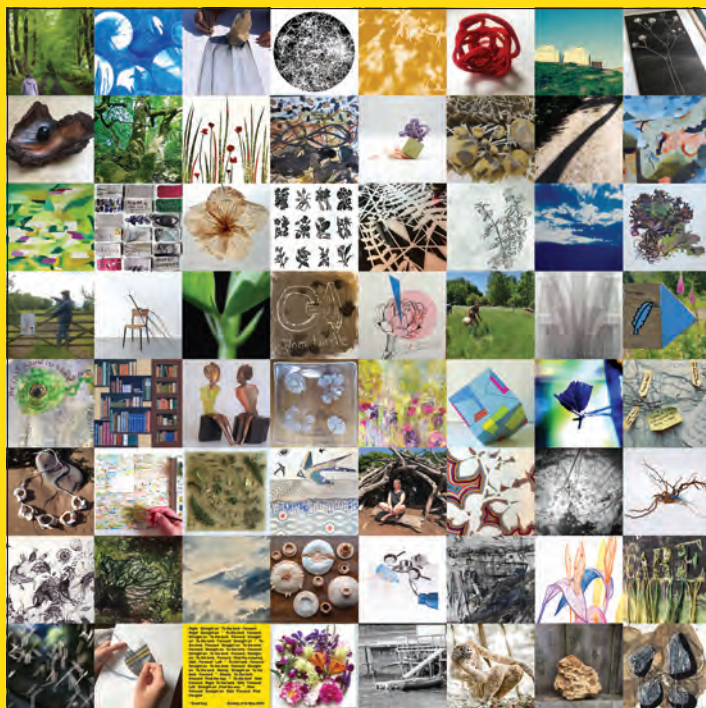
07580 667343 / 01935 507406

[INFO@JOHNGAMMANS.CO.UK](mailto:INFO@JOHNGAMMANS.CO.UK)



**SOW**  
somerset  
art works





## Somerset Reacquainted Tour COMMUNITY

*A manifesto of the value of art-making from artists across the county*

**18 September - 26 October 2021**

Brewhouse Theatre & Arts Centre, Coal Orchard, Taunton, Somerset  
[somerseartworks.org.uk/somerseareacquainted/tour](https://somerseartworks.org.uk/somerseareacquainted/tour)



Supported by public funding from  
**ARTS COUNCIL  
 ENGLAND**



**SCW**  
 somerset  
 art works

**SOMERSET OPEN STUDIOS 2021**

**Every weekend is  
 Family Friendly Weekend!**

**Launching on Saturday 18 September  
 at Somerset Rural Life Museum, Glastonbury**

Stitch a leaf or flower with artist Jane Mowat. Represent yourself, where you come from and where you call home. Inspired by Alice Kettle's exhibition, stitching and the use of colour and fabric is universal and can speak in symbols without the need for words. All ages, 10am - 4pm. Museum entry fees apply, workshop free.

**25 September:** Octagon Theatre, with Miriam Sheppard

**26 September:** Taunton Brewhouse, with Annie Musgrove

**2 October:** Chard Museum, with Jenny Mellings

Further information and more Family Friendly workshops and events: [somerseartworks.org.uk/family](https://somerseartworks.org.uk/family)



**HERITAGE COURTYARD GALLERY AND STUDIOS**

6 Heritage Courtyard  
 Sadler Street  
 Wells BA5 2RR



Images: Irises by Cathy Charles

**18th September - 3rd October 2021  
 11am-4.30pm - Closed Sunday and Monday**

**Nine artist studios all in one amazing place  
 Painting, ceramics, 3D, mixed media.**

[www.heritagecourtyardstudio.com](https://www.heritagecourtyardstudio.com)

**OPEN STUDIOS**



VENUE 105

**The Woolverton Gallery**

NEAR BATH

Over 100 works of art permanently on view in one of the West Country's largest art galleries

Come along and be inspired by our stunning collection, with owner Ray Jones always on hand to give your visit a personal experience

**Woolverton, Bath, BA2 7RH**

[bathartsales.com](https://bathartsales.com) • 01373 463098



# Visual Arts

## 'SCHOOL OF PARIS'

**7 - 30 October**

David Simon Contemporary, 37 High Street, CASTLE CARY, BA7 7AW. Monday - Saturday 10am - 5.30pm. 01963 359102 / [davidsimoncontemporary.com](http://davidsimoncontemporary.com). "Exceptional drawings and rare, signed original linocuts, lithographs and etchings by Georges Braque, Marc Chagall, Salvador Dali, Raoul Dufy, Henri Matisse, Joan Miró, and Pablo Picasso."

## 'AFTER THE FLOATING WORLD'

**8 - 10 October**

Hours, 10 Colston Yard, BRISTOL, BS1 5BD. Friday 6 - 9pm, Saturday 11am - 6pm. 07766 054659 / [hours-space.com](http://hours-space.com). "New abstract paintings by Nigel Shipley inspired by Japanese prints."

## KIM PRAGNELL AND HILARY BALL

**13 - 19 October**

The Gallery, Shaftesbury Arts Centre, Bell Street, SHAFTESBURY, SP7 8AR. Monday - Saturday 10am - 4pm. 01747 855243. "Sea and garden related paintings."

## PEDAS: ART IN TO VIEW'

**15 October - 1 November**

The Gallery Upstairs, Upton Country Park, Poole Road, POOLE, BH17 7BJ. 10am - 4pm. 01202 775304 / [thegalleryupstairs.org.uk](http://thegalleryupstairs.org.uk) / [pedas.org.uk](http://pedas.org.uk). "New work in an un-themed exhibition by members of Poole & East Dorset Art Society."

## ATELIER 21 OPEN STUDIO

**16 and 17 October**

Unit 5, 8 Vale Lane, BRISTOL, BS3 5RU. 12noon - 6pm. [atelier21.studio](http://atelier21.studio). "Work by Atelier artists: printmaker Virginia Bridge, surrealist artist Theadora Ballantyne-Way, multidisciplinary artist Soraya Schofield, and photographer Barry Cawston."

## ANNE TOWNSEND

**18 - 31 October**

Sou'-Sou'-West Arts Gallery, Symonds Estate, BRIDPORT, DT6 6HG. 10.30am - 4.30pm. 01308 301326 / [sossouw.co.uk](http://sossouw.co.uk). Paintings and sculpture. Above: 'Gracie'



JOHANNES VON STUMM

## Together Again

"The exquisite Tincleton Gallery's Autumn mixed show will feature work by over a dozen of their gallery artists, plus three guest artists. This show incorporates a stunning selection of sculptures by Johannes von Stumm, past president of the Royal Society of Sculptors and current president of the Oxford Art Society."

**10 September - 31 December:** Tincleton Gallery, The Old School House, TINCLETON, near Dorchester, DT2 8QR. Friday - Monday 10am - 5pm. 01305 848909 / [tincletongallery.com](http://tincletongallery.com).

## ANTHONY ATWOOD

**20 - 26 October**

The Gallery, Shaftesbury Arts Centre, Bell Street, SHAFTESBURY, SP7 8AR. Monday - Saturday 10am - 4pm. [shaftesburyartscentre.org.uk](http://shaftesburyartscentre.org.uk). Paintings.

## SHELLEY DYER-GIBBINS: 'COOL CUTS'

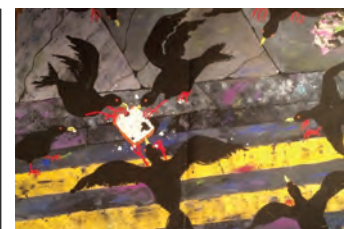
**21 October - 15 November**

Heart of The Tribe Gallery, 74 High Street, GLASTONBURY, BA6 9DZ. 11am - 5pm. [heartofthetribe.com](http://heartofthetribe.com). "Retro-toned pieces primarily featuring linocut printmaking."

## BRISTOL 1904 ARTS

**23 - 30 October**

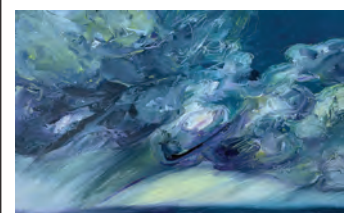
The Red Lodge, Park Row, BRISTOL, BS1 5LJ. 10am - 4.45pm. [bristol1904arts.org](http://bristol1904arts.org). "Founded in 1904 as Bristol Savages with artistic roots running deep into Bristol's creative history, the Society has rebranded with a new name and new activities that more accurately portray current interests. This still includes the classic painting, music, magic, poetry, storytelling and fellowship."



## WESCA: 'URBAN SPACES'

**23 - 31 October**

2 West Walks, DORCHESTER, DT1 1RE. 10.30am - 4pm. 01305 260215. "Based on a theme, ten members of Wesca have produced an original and varied show in 2D and 3D."



## CHRISTINE ALLISON: 'THE SKY IS THE LIMIT'

**23 October - 7 November**

Sou'-Sou'-West Arts Gallery, Symonds Estate, BRIDPORT, DT6 6HG. 10.30am - 4.30pm. 01308 301326 / [sossouw.co.uk](http://sossouw.co.uk).

## 'INSIDE OUT PAINTERS'

**25 - 30 October**

Church House, High Street, WIMBORNE, BH21 1HT. 10am - 5pm. 07545 868353. Paintings by Chris Clark, Gill Faraway, Kathe Holt, Sarah Kelly, and Iris McCrow.

## PERCY LIZZARD

**27 October - 2 November**

The Gallery, Shaftesbury Arts Centre, Bell Street, SHAFTESBURY, SP7 8AR. Monday - Saturday 10am - 4pm. [shaftesburyartscentre.org.uk](http://shaftesburyartscentre.org.uk). "Percy Lizzard's paintings are inspired by exotic destinations, typically featuring brightly coloured birds and animals."

## CLEVEDON ART CLUB

**28 - 30 October**

The Science Atrium, Clevedon School, Valley Road, CLEVEDON, BS21 6AH. Thursday, Friday and Saturday 10.30am - 5.30pm. [clevedonartclub.co.uk](http://clevedonartclub.co.uk).



## Young Gallery Salisbury

Supporters of the Young Gallery Members Exhibition

11 SEPTEMBER - 1 OCTOBER • MARKET PLACE, SALISBURY • FREE ADMISSION  
[younggallerysalisbury.co.uk](http://younggallerysalisbury.co.uk)



"Do women have to be naked to get into the Met Museum?" asked the Guerrilla Girls in 1989.

The self-styled 'conscience of the art world' asked and answered the same question in their first colour poster, which remains their most iconic image. It noted that less than 5% of the modern artists shown there were women but 85% of the nudes on display were female.

Feminism, combined with financial constraints and faith in conceptual art, has helped erase life drawing from the core curriculum at most major art schools.

Life model Sophie Larter, who is in her early 50s, is working hard to put flesh and bones back on display in the classroom. Far from feeling objectified by the business of baring all, the married mum-of-two from Crewkerne feels positively empowered by it. "I particularly enjoy stepping out of well-known paintings, taking classic images and subverting them, confronting artists with other possibilities," she said.

Sophie's father was a potter and her mother was a landscape artist and they had a life-drawing room in their house when she was growing up. So she feels like she has come home, in a way, since taking up life modelling professionally ten years ago.

She got a degree in art history, film and design but had no real plan to follow in her parents' artistic footsteps, doing many different jobs over the years. After



### Sophie Larter Life Model

having children, she returned to college in Taunton in 2011 to start a foundation course in art and design and got on well with the life model, who encouraged Sophie to pose. She's never looked back. "It just started to happen from there. There was no formal training for this!"

Tragically, Sophie's dad committed suicide when she was a teenager and her mum passed away in 2019 but she said her job keeps her connected to them. "I feel very close to both my parents because of what I do, when I am working I am in their world," she said.

I caught up with Sophie when she was modelling at Abbotsbury Studio, a delightful teaching space and gallery run by artist and tutor John Meaker. Like Sophie, John is a passionate advocate of life drawing and the pair agree "posture with attitude" is the key to a model's success, particularly for short poses.

John admits he is unable to pay Sophie what he believes she deserves, and she knows she won't get rich being a life model, but there are other rewards. "My husband works, so the family does not rely on my income, but it has given me independence as a woman," she reflected. "I've been very privileged to work with kids, many from difficult backgrounds who are going through all sorts of things, including gender transition."

Like all of us, Sophie would like to see more female artists on the walls of the world's finest galleries. However, if she got into The Metropolitan Museum of Art as a nude, she would be very proud.

*Emma Pittard*

**[abbotsburystudio.co.uk](http://abbotsburystudio.co.uk)**

[sophie.ann.larter@gmail.com](mailto:sophie.ann.larter@gmail.com)

*Photography by Andy Scaysbrook*



4 COLOURS  
to make a  
THOUSAND  
SHADES

#COLOURINGYOURFUTURE

**S&G**  
STEPHENS & GEORGE  
PRINT GROUP

[WWW.STEPHENSANDGEORGE.CO.UK](http://WWW.STEPHENSANDGEORGE.CO.UK)  
01685 388888 | [SALES@STEPHENSANDGEORGE.CO.UK](mailto:SALES@STEPHENSANDGEORGE.CO.UK)

GOAT MILL ROAD | DOWLAIS | MERTHYR TYDFIL | CF48 3TD

 FOLLOW US ON TWITTER @SandGPrintGroup



# Tincleton Gallery

contemporary fine art in Dorset

Together Again

gallery & guest artists  
10 September - 31 December



"Nautilus"  
by Johannes von Stumm

The Old School House, Tincleton, near Dorchester, DT2 8QR  
Friday / Saturday / Sunday / Monday · 10am – 5pm  
01305 848909 · tinctongallery.com

## EXHIBITION

CICCIC Paul Street Taunton TA1 3PF

Tuesday 5<sup>th</sup> to Saturday 23<sup>rd</sup> October 2021

## CoLouRFuL

FRiENDS

CoLouRFuL  
FRiENDS



CoLouRFuL  
FRiENDS

FRiENDS

## CoLouRFuL

Contemporary paintings & prints by Liz Hood & friends

Jane Brossard Sara Dudman Elizabeth Earley  
Janet Glynn Smith Lizzie Induni Rossanne Lee-Bertram

## Sou'-Sou'-West Contemporary Arts Gallery Symondsbur Estate Bridport DT6 6HG

**Climate Change**  
Mixed Open  
11-27 Sep

**Perfect Balance**  
Zee Jones  
02-17 Oct

**The Sky is The Limit**  
Christine Allison  
23 Oct - 07 November

Further exhibitions  
in the Shop Gallery



Dorset  
Council



ARTS COUNCIL  
ENGLAND  
LOTTERY FUNDED

Supported using public funding by  
ARTS COUNCIL  
ENGLAND

**Gallery & Shop**  
Daily: 10:30 - 16:30  
[sousouwest.co.uk](http://sousouwest.co.uk)



## Bridport Arts Centre ALLSOP GALLERY ARTIST TALK BEYOND THE GOLDEN REEDS

by Keith Rogers  
Saturday 23 October  
2pm - 4pm · free

A discussion about the exhibition  
artwork, process and techniques

Exhibition 16 Oct - 13 Nov

South Street, Bridport, Dorset, DT6 3NR  
01308 427183 [www.bridport-arts.com](http://www.bridport-arts.com)

BRIDPORT  
ARTSCENTRE



Dorset  
Council





# Music

September and October 2021



## Linos Piano Trio

"First Prize and Audience Prize winner of the Melbourne International Chamber Music Competition 2015, the Linos Piano Trio is increasingly recognised as one of Europe's most creative and dynamic trios. Drawing on the rich and varied cultural and musical backgrounds of its members as well as specialisms in historically informed performance and new music, the Linos Piano Trio possesses a colourful and distinctive musical voice."

**3 September:** Bridport Arts Centre, South Street, BRIDPORT, DT6 3NR. 11.15am. £12. 01308 424901 / [concertsinthewest.org](http://concertsinthewest.org).

**3 September:** Ilminster Arts Centre, East Street, ILMINSTER, TA19 0AN. 6.15pm. £15. 01460 54973 / [concertsinthewest.org](http://concertsinthewest.org).

**4 September:** The Dance House, Gouldsbrook View, North Street, CREWKERNE, TA18 7AL. 6.45pm. £15. 01823 252658 / 01460 75928 / [concertsinthewest.org](http://concertsinthewest.org).

## NICK CAVE & WARREN ELLIS

**2 September**

Lighthouse, 21 Kingland Road, POOLE, BH15 1UG. 8pm. 01202 280000 / [lighthousepoole.co.uk](http://lighthousepoole.co.uk).



## THE CATENARY WIRES + PETE ASTOR + EUROPEAN SUN

**3 September**

The Thunderbolt, 124 Bath Road, BRISTOL, BS4 4ED. 7.30pm. [thethunderbolt.net](http://thethunderbolt.net). "The Catenary Wires are made up of Amelia and Rob of Talulah Gosh and Heavenly, along with Andy Lewis, Ian Button and Fay Hallam. Pete Astor (above) was in '80s favourites The Loft and The Weather Prophets and now also performs with Andy Lewis and Ian Button."

## MELISSA PHELPS AND CAROLINE PALMER

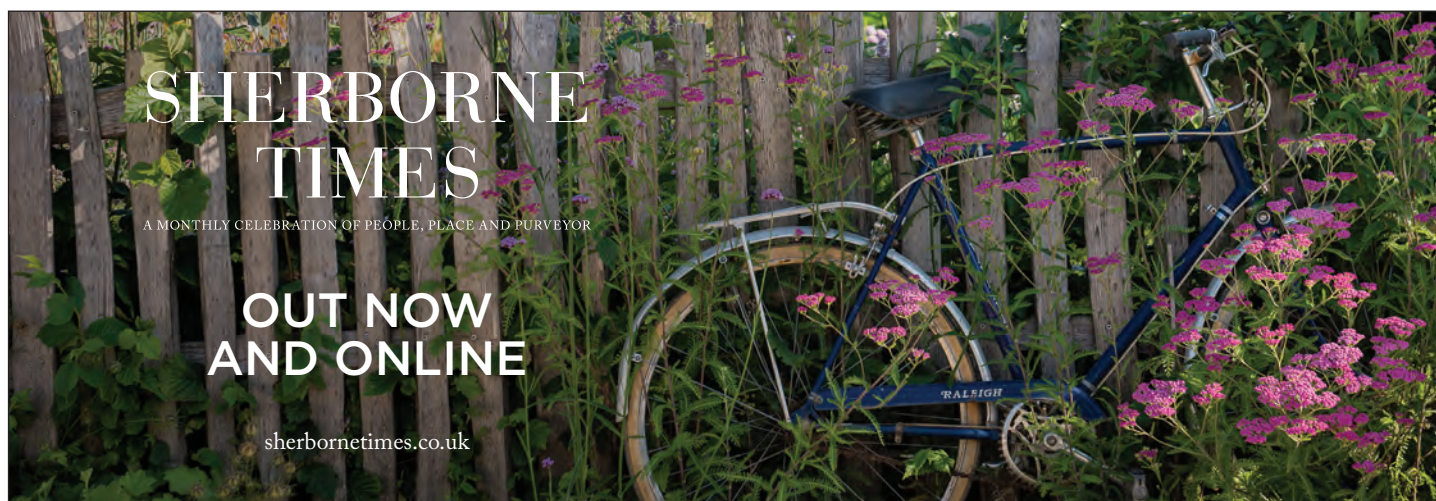
**3 and 4 September**

Tincton Gallery, The Old School House, TINCLETON, near Dorchester, DT2 8QR. 7.30pm. £15. 01305 848909 / [tinctongallery.com](http://tinctongallery.com). Cello and piano recital.

## KINGFOIL + LUMP + MIKEY BALL & THE COMPANY

**9 September**

Lighthouse, 21 Kingland Road, POOLE, BH15 1UG. 7.30pm. 01202 280000 / [lighthousepoole.co.uk](http://lighthousepoole.co.uk).





## WINTER WILSON

**11 September**

Caryford Community Hall, Maggs Lane, CASTLE CARY, BA7 7JJ. 6.45pm. £10. caryfordhall.co.uk. "Winter Wilson bring a sense of intimacy to every venue, bringing superb, often hard-hitting original songs, stunning harmonies and musicianship It is their live performances where these two really excel."

## THE WANDERING HEARTS

**14 September**

Lighthouse, 21 Kingland Road, POOLE, BH15 1UG. 8pm. 01202 280000 / lighthousepoole.co.uk. "The Wandering Hearts combine pop, rock, blues, folk and country in a rich tapestry of influences."

## JOHN SMITH

**16 September**

The Pound Arts Centre, Pound Pill, CORSHAM, SN13 9HX. 7.30pm. £15 / £14. 01249 701628 / poundarts.org.uk. "One of the UK's finest guitarists and songwriters."

## ALAN BARNES AND DAVID NEWTON

**17 September**

Lighthouse, 21 Kingland Road, POOLE, BH15 1UG. 7.45pm. 01202 280000 / lighthousepoole.co.uk. Jazz.

## PHIL BEER

**17 September**

The Beehive, Dowell Street, HONITON, EX14 1LZ. 8pm. 01404 384050 / beehivehoniton.co.uk.



## PHILIP CLOUTS AND RON PHELAN

**17 and 18 September**

Tincton Gallery, The Old School House, TINCLETON, near Dorchester, DT2 8QR. 7.30pm. £15. 01305 848909 / tinctongallery.com. Jazz.



## Sound Of The Sirens

"Abbe and Hannah's musical and vocal dexterity dovetail beautifully on their co-written songs, which range from beautiful, emotive ballads, to up-beat, foot stomping, hands in the air, sing-along anthems."

**25 September:** The Beehive, Dowell Street, HONITON, EX14 1LZ. 8pm. £12. 01404 384050 / beehivehoniton.co.uk.

## BEN WALKER & KIRSTY MERRYIN

**18 September**

Lighthouse, 21 Kingland Road, POOLE, BH15 1UG. 8pm. lighthousepoole.co.uk. "Folk."

## JETHRO TULL

**25 September**

Lighthouse, 21 Kingland Road, POOLE, BH15 1UG. 7.30pm. 01202 280000 / lighthousepoole.co.uk.

## THE LAST INKLINGS

**30 September**

Lighthouse, 21 Kingland Road, POOLE, BH15 1UG. 8pm. 01202 280000 / lighthousepoole.co.uk. "Cello, mandolin and vocal harmonies, layered with guitar, piano, strings, synths and percussion."

## EMMA HALNAN AND THE EBLANA STRING TRIO

**30 September**

Bishops Hull Hub, Bishops Hull Road, TAUNTON, TA1 5EB. 6.45pm. £15. 01823 252658 / concertsinthewest.org. "Emma Halnan (flute) and The Eblana String Trio perform a mix of Mozart, Beethoven, Viotti, Gerald Finzi and several pieces with intriguing titles."

## EMMA HALNAN AND THE EBLANA STRING TRIO

**1 October**

Bridport Arts Centre, South Street, BRIDPORT, DT6 3NR. Doors open 11.15am. £12. 01308 424901. See 30 September.

## EMMA HALNAN AND THE EBLANA STRING TRIO

**1 October**

Ilminster Arts Centre, East Street, ILMINSTER, TA19 0AN. Doors open 7.15pm. £15. 01460 54973 / concertsinthewest.org. See 30 September.

## 'CELEBRATING KEITH TIPPETT'

**1 and 2 October**

Bristol Beacon, Trenchard Street, BRISTOL, BS1 5AR. Friday 6.30pm, Saturday 12noon. £20 / £13. 0117 203 4040 / bristolbeacon.org. "A special weekend celebrating the inimitable Keith Tippett, featuring many of the incredible musicians who were part of his life."

# GALLERY ON THE SQUARE



Until  
September 18  
**Luminescence:**  
Margaret Johnson

September 25  
to October 25  
**Collagraphs by**  
Sarah Ross-Thompson



Regular gallery artists include Colin Willey, John Boyd, Debra Sweeney, Philip Winstone

Queen Mother Square, Poundbury, Dorchester DT1 3BL

Mon-Sat, 9.30am to 5pm; Sundays: 11am to 4pm

01305 213322

www.gallerypoundbury.co.uk





## Idles

"Idles scored their first UK No. 1 album in 2020 with *Ultra Mono*, which also became the fastest-selling vinyl release of the year, but unfortunately have yet to be able to play the album out to any of their fans since their sold-out tour was postponed. A Bristol homecoming show has now been announced, featuring a riotous full day programme of amazing bands, DJs and electronic producers. Taking place across three festival-sized stages, music kicks off from 3pm and rolls right until close at 11pm, meaning there's a sizeable roster of national and local talent joining Idles on the full line-up, including Anna Meredith, Working Men's Club, Jane Weaver, TV Priest, and Big Joanie."

**3 September:** Clifton Downs, Stoke Road, BRISTOL, BS9 1FG. 3 - 11pm. £45. idlesband.com.

### EMMA HALNAN AND THE EBLANA STRING TRIO

**2 October**

The Dance House, Goulsbrook View, North Street, CREWKERNE, TA18 7AL. 6.45pm. £15. 01823 252658 / 01460 75928. See 30 September.

### JACOB & DRINKWATER

**2 October**

The Pound Arts Centre, Pound Pill, CORSHAM, SN13 9HX. 7.30pm. £12 / £10. poundarts.org.uk.

### EMMA HALNAN AND THE EBLANA STRING TRIO

**3 October**

St Lawrence Church, UPWEY, Church Street, Weymouth, DT3 5QE. 3pm. £15. 01305 812417 / 01823 252658. See 30 September.

### LONDON SYMPHONY ORCHESTRA

**7 October**

Bath Forum, 1A Forum Buildings, BATH, BA1 1UG. 7.30pm. £66 / £10. 0117 203 4040 / bristolbeacon.org. "Special one-off concert conducted by Sir Simon Rattle, with violist Antoine Tamestit."

### JAZZ BUTCHER + BUSH & FEY

**7 October**

The Thunderbolt, 124 Bath Road, BRISTOL, BS4 4ED. 7.30pm. thethunderbolt.net.

### KRIS DREVER

**8 October**

The Pound Arts Centre, Pound Pill, CORSHAM, SN13 9HX. 7.30pm. £15 / £14. 01249 701628 / poundarts.org.uk. Folk.

### TOM MOORE & ARCHIE MOSS

**9 October**

The Pound Arts Centre, Pound Pill, CORSHAM, SN13 9HX. 7.30pm. £12 / £10. 01249 701628 / poundarts.org.uk. "Potent folk."

### CHOLE FOY

**15 October**

The Pound Arts Centre, Pound Pill, CORSHAM, SN13 9HX. 7.30pm. £12 / £10. 01249 701628 / poundarts.org.uk.

### INDIA ELECTRIC COMPANY

**15 October**

The Beehive, Dowell Street, HONITON, EX14 1LZ. 7.30pm. £15 / £12.50. 01404 384050 / beehivehoniton.co.uk. "Sometimes folk, sometimes not."

### RONAN MAGILL

**15 and 16 October**

Tincleton Gallery, The Old School House, TINCLETON, near Dorchester, DT2 8QR. 7.30pm. £15. tincletongallery.com. "Noted pianist and composer."

### 'CALM BEFORE THE STORM'

**16 October**

St Thomas's Church, St Thomas's Square, SALISBURY, SP1 1BA. 5pm. £15. hurncourtopera.org. "Vocal recital by soprano Natasha Page, mezzo-soprano Angharad Rowlands, and bass baritone Konrad Jaromin, with Dylan Perez on piano."

### 'CALM BEFORE THE STORM'

**17 October**

Merley House, Merley House Lane, WIMBORNE, BH21 3AA. 5pm. £15. 07717 570333 / hurncourtopera.org. See 16 October.

### ORPHEUS

**21 October**

Marine Theatre, Church Street, LYME REGIS, DT7 3QA. 7.30pm. £18 / £14. marinetheatre.com. "An explosive celebration of uplifting sambas and bossa novas."

### HEIDI TALBOT AND BOO

**HEWERDINE**

**21 October**

The Pound Arts Centre, Pound Pill, CORSHAM, SN13 9HX. 7.30pm. £12 / £10. poundarts.org.uk.

### LANTERNS ON THE LAKE

**23 October**

The Pound Arts Centre, Pound Pill, CORSHAM, SN13 9HX. 7.30pm. £14 / £12. poundarts.org.uk. "Hailing from Newcastle-Upon-Tyne and releasing music on the Bella Union records, Lanterns on the Lake combine dreamy, melancholic Indie rock with beautiful layers of texture and celestial melodies that thread around intricate instrumentation."

### THE BAND OF HOLY JOY +

**STUART MOXHAM + HELEN**

**MCCOOKERYBOOK**

**29 October**

The Thunderbolt, 124 Bath Road, BRISTOL, BS4 4ED. 7.30pm. thethunderbolt.net.

We are a funky, independent record shop stocking a great range of new and preloved vinyl, specialising in Reggae, Hip Hop, Soul, Funk, World, Electronic, Jazz, Blues, Alternative, Indie, Rock, Pop and more

**8a Pope Street, Brewery Square, Dorchester, DT1 1GW**  
Tuesday to Saturday from 10am

**CLOCKTOWER MUSIC**, Bridport's vinyl record shop welcomes our satellite shop **CLOCKTOWER TOO**  
*Clocktower Too specialises in all styles of music on CD, plus a selection of music memorabilia and vinyl records*  
**35a South Street, Bridport, Dorset DT6 3NY**  
Open Monday, Wednesday, Friday and Saturday, 9.30am - 3.30pm

**FROME**  
2 - 3 King Street, BA11 1BH  
01373 464666  
**WARMINSTER**  
5 Weymouth Street, BA12 9NP  
01985 213707  
[ravesfromthegrave.com](http://ravesfromthegrave.com)  
f t i



## AUTUMN AT SALISBURY PLAYHOUSE

IAN  
McDIARMID

# THE LEMON TABLE

BY  
JULIAN  
BARNES  
DIRECTED BY  
MICHAEL  
GRANDAGE

BOOK  
NOW  
Tickets  
from £12

14 - 23 OCTOBER 2021

in the Main House

Book online at [wiltshirecreative.co.uk](http://wiltshirecreative.co.uk)

SALISBURY  
PLAYHOUSE  
PART OF WILTSHIRE CREATIVE

Wiltshire Creative, Malvern Theatres, Sheffield Theatres and HOME in association with MGC present the world premiere of *The Lemon Table*

Photography: Johan Persson. Design by MGC



President - Sir Simon Keenlyside CBE  
Artistic Director - Lynton Atkinson

# DIDO & AENEAS

Henry Purcell

Performances - 7.30pm

Thursday 2 September 2021

Richmond Hill St Andrew's URC

Church, Bournemouth, BH2 6JJ

Friday 3 September 2021

Wilton Parish Church, West Street, Wilton, Salisbury SP2 0DL

Tickets £25 - under-18s and those in full-time education - free

[www.ticketsource.co.uk/hurn-court-opera](http://www.ticketsource.co.uk/hurn-court-opera)

[www.hurncourtopera.org](http://www.hurncourtopera.org) - Charity No. 1177609

Supporting the vocal stars of tomorrow



Booking from 6 September...

Lucy Atkins Vince Cable  
Ambra Edwards  
Andrew Gailey Rukmini Iyer  
Duncan Minshull  
James Naughtie  
Veronica O'Keane  
Philippe Sands Anil Seth  
Isy Suttie

...and many others

15-23 October 2021

[www.wellsfestivalofliterature.org.uk](http://www.wellsfestivalofliterature.org.uk)

Box office: 01749 834483 (weekdays 9.30 am to 12.30 pm)

## AWESOME LOCAL FOOD & DRINK AT

# YEOVIL SUPER SaTURDay

## SAT 18 SEPT

ST. JOHNS CHURCHYARD  
THE BOROUGH  
KING GEORGE STREET

10 - 4



[WWW.EATFESTIVALS.ORG](http://WWW.EATFESTIVALS.ORG)



# Performance

September and October 2021



LUKE JERRAM 'GAIA'

## Inside Out Dorset

Over two weekends in September, five special and distinctive Dorset landscapes will be animated and transformed by magical art and performances with themes of sustainability, land use and lifecycles, human and environmental.

In the east of the county, from Friday 17 to Sunday 19 September, *Inside Out* will stage Luke Jerram's remarkable installation *Gaia*, a seven-metre scale model of Earth using NASA photography that offers an out-of-this-world chance to see our planet as an astronaut would view it from space.

In Poole and Christchurch, on 18 and 19 September respectively, there's a full programme of outdoor circus events featuring Cirque Rouages' *Boate* in which fabulous acrobatics deliver a powerful political message, Mimbres' *Lifted*, Les Grooms' brass band promenade show *La Baronnade*, and *Catch Me*, Upswing's surprising take on age and gender.

Over the second weekend, from Friday 24 to Sunday 26 September, *Inside Out Dorset* hosts Luke Jerram's *Gaia* in the stunning scenery of the Marshwood Vale on the Symondsbur Estate, near Bridport. The installation will be accompanied by an artwork trail of events and performances including three world premieres that explore climate change and our future use of the land.

Meanwhile, the final weekend finds two of Europe's most in-demand outdoor arts companies - Germany's Dundu and England's Worldbeaters - collaborating in *Sense of Unity*, an after-dark parade show in Weymouth fusing visual spectacle with raucous live music.

**17 - 26 September:** Moors Valley Country Park & Forest, Poole, Christchurch, Symondsbur Estate and Weymouth, DORSET. Free admission to all events, see website for full information.

[activateperformingarts.org.uk](http://activateperformingarts.org.uk)



### HURN COURT OPERA: 'DIDO AND AENEAS'

**2 September**

Richmond Hill St Andrew's URC Church, 8 St Stephen's Road, BOURNEMOUTH, BH2 6JJ. 7.30pm. £25. 07951 078207 / [hurncourtopera.org](http://hurncourtopera.org). "Fate shatters the happiness of Dido, Queen of Carthage and Trojan Aeneas in Purcell's operatic masterpiece. Production features Zenaida Yanowsky, former star principal of the Royal Ballet, as Movement Director."

Above: Theo Perry (Aeneas)

### HURN COURT OPERA: 'DIDO AND AENEAS'

**3 September**

Wilton Parish Church, West Street, WILTON, Salisbury, SP2 0DL. 7.30pm. £25. 07951 078207 / [hurncourtopera.org](http://hurncourtopera.org). See 2 September.



### PAM AYRES: 'UP IN THE ATTIC'

**3 September**

Lighthouse, 21 Kingland Road, POOLE, BH15 1UG. 7.30pm. 01202 280000 / [lighthousepoole.co.uk](http://lighthousepoole.co.uk).



**Lesley Dixon**  
Pots & Bird Baths  
1st-30th September

## THE CREATIVE GALLERY

Showcasing ceramics, paintings, textiles, jewellery and glass by local artists



**Mark Fireeye**  
Green woodcraft  
1st-30th October



St John's Hill, Wareham, Dorset BH20 4NB t 01929 551505 e [fiona@creativegallerywareham.co.uk](mailto:fiona@creativegallerywareham.co.uk)  
**Open: Daily 10am-5pm until 1st October, then Monday to Saturday 10am-5pm**





**NABIL ABDULRASHID**

**9 September**

Lighthouse, 21 Kingland Road, POOLE, BH15 1UG. 7.45pm. 01202 280000 / lighthousepoole.co.uk. Comedy.

**THE 10 PARISHES FESTIVAL**

**11 - 19 September**

Various locations in and around WIVELISCOMBE. 01984 624564 / 10parishesfestival.org.uk. "Visual and performing arts festival comprising over 45 artists in open studios and exhibition venues."



**LIVING SPIT: 'BEAUTY & THE BEAST'**

**14 - 18 September**

The Theatre on the Downs, Breaking Bread, Stoke Road, BRISTOL, BS9 1FG. 7.30pm (Saturday matinee 3pm). £15. 0117 987 7877 / theatreonthedowns.co.uk.

**OLGA KOCH: 'HOMECOMING'**

**18 September**

The Pound Arts Centre, Pound Pill, CORSHAM, SN13 9HX. 8pm. £14. 01249 701628 / poundarts.org.uk. Comedy.



## Wild Swimming

"Full Rogue present an interrogation of gender and privilege and a wilfully ignorant history of English Literature."

**Until 4 September:** The Theatre on the Downs, Breaking Bread, Stoke Road, BRISTOL, BS9 1FG. 7.30pm. £15. 0117 987 7877 / theatreonthedowns.co.uk.



**BRIDGET CHRISTIE**

**19 September**

Lighthouse, 21 Kingland Road, POOLE, BH15 1UG. 7.45pm. 01202 280000 / lighthousepoole.co.uk. "The Edinburgh Comedy Award, Rose d'Or and South Bank Sky Arts Award winner presents her highly anticipated brand-new show."

## 'ARSENIC AND OLD LACE'

**20 - 25 September**

Studio Theatre, Ashley Road, SALISBURY, SP2 7TN. 7.30pm. £12 / £8. 01722 342860. "Set in a quiet neighbourhood of Brooklyn in the early 1940s, live two old ladies - Abby and Martha Brewster. Underneath their air of respectability lies a dark secret. Twelve bodies in the cellar."

## SISATA: 'ANTIGONE'

**23 and 24 September**

Lighthouse, 21 Kingland Road, POOLE, BH15 1UG. 8pm. 01202 280000 / lighthousepoole.co.uk. "Sisata's production of Antigone is set in the future, echoes the present, and transports us back to the roots of all theatre. It promises to be a dramatic, thought-provoking whirlwind of theatrical entertainment!"

## ROB BRYDON

**24 September**

Lighthouse, 21 Kingland Road, POOLE, BH15 1UG. 7.30pm. 01202 280000 / lighthousepoole.co.uk.

## 'CRIMES IN EGYPT'

**24 September**

Lighthouse, 21 Kingland Road, POOLE, BH15 1UG. 7.45pm. 01202 280000 / lighthousepoole.co.uk. "Belgian detective extraordinaire Artemis Arinae is set to enjoy a holiday cruise along the River Nile when tragedy strikes. All the passengers and staff aboard are suspects, and the murder count is growing..."

## 'DRINK RUM WITH EXPATS'

**25 September**

The Pound Arts Centre, Pound Pill, CORSHAM, SN13 9HX. 8pm. £12 / £10. 01249 701628 / poundarts.org.uk. "From our small island in the sea to another small island in the sea, Sh!t Theatre found mystery and murder in the fight to be European."

## IVAN BRACKENBURY + MARLON DAVIS + PAUL MCCAFFREY

**25 September**

Lighthouse, 21 Kingland Road, POOLE, BH15 1UG. 8pm. 01202 280000 / lighthousepoole.co.uk. Comedy.



# FISHERTON MILL

in SALISBURY





108 Fisherton Street, Salisbury, SP2 7QY

Monday - Friday 10am - 5pm, Saturday 9.30am - 5.30pm

[WWW.FISHERTONMILL.CO.UK](http://WWW.FISHERTONMILL.CO.UK)





ISSY SUTTIE

## Wells Festival of Literature

"Physicists, physicians, psychiatrists; politicians, professors, poets; polymaths, provosts, presenters... People of all persuasions will be piling into Wells during October to take part in a festival which promises eight days of - well, everything! There will be fact and fiction, poetry and prose, of course. But within those broad categories audiences will find a wealth of variety guaranteed to inform, entertain and inspire. Annoy? Possibly. Challenge? Hopefully. Amuse? Undoubtedly. The topics being covered during October will include war and peace, hope and despair, laughter and tears, memories, morals, medicine, maturing... Amongst the characters being discussed are Charles Dickens, Robert Maxwell, John Keats, Donald Trump, Edward Burne-Jones, Philip Larkin, Pandora... And the speakers coming to Wells to share their wit and wisdom in Cedars Hall include Lucy Atkins, Cyles Brandreth, Vince Cable, Emma Dabiri, Cal Flyn, Natalie Haynes, James Naughtie, Lucy Pollock, Philippe Sands, Mary Ann Sieghart, Issy Suttie... "In short, there's plenty of talent, a vast spread of knowledge, a huge variety of opinion, some extremely fascinating views and a generous sprinkling of suggestions. This year there's even a cream tea to be had - in addition to three deliciously inspiring Literary Lunches, if you have room!"

**15 - 23 October:** Locations in and around WELLS. 01749 834483 / [wellsfestivalofliterature.org.uk](http://wellsfestivalofliterature.org.uk)

### 'HAMLET ACT SIX, A COMEDY' 7 October

Merlin Theatre, FROME, BA11 2HG. 8pm. £12. 07780 938107 / [shakespearelive.com](http://shakespearelive.com). "We all know that Shakespeare's 'Hamlet' ends very sadly with bodies all over the stage. In this new comedy for Shakespeare Live, writer Dennis Harkness imagines what might happen next..."

### 'HAMLET ACT SIX, A COMEDY' 11 and 12 October

The Mission Theatre, BATH, BA1 1UF. 8pm. £12. 07780 938107. See 7 October.

### 'HAMLET ACT SIX, A COMEDY' 14 October

The Marden House Centre, CALNE, SN11 0JJ. 8pm. £12. 07780 938107. See 7 October.

### 'HAMLET ACT SIX, A COMEDY' 15 October

The Town Hall, CORSHAM, SN13 0EZ. 8pm. £12. 07780 938107. See 7 October.

### 'HAMLET ACT SIX, A COMEDY' 16 October

The Cause, CHIPPENHAM, SN15 3DD. 8pm. £12. 07780 938107. See 7 October.

### 'HAMLET ACT SIX, A COMEDY' 17 October

Village Hall, FIDDINGTON, TA5 1JG. 2.30pm. £12. 07780 938107. See 7 October.



### 'THE WEDDING' 20 and 21 October

Lighthouse, 21 Kingland Road, POOLE, BH15 1UG. 7.45pm. 01202 280000 / [lighthousepoole.co.uk](http://lighthousepoole.co.uk). "An elegant, brutal and thrilling depiction of a dystopian world in which we are all brides, wedded to society."



**We deliver any marketing material**

Call Will on 07397 853006  
[acousticdistribution@btinternet.com](mailto:acousticdistribution@btinternet.com)  
[acousticdistribution.co.uk](http://acousticdistribution.co.uk)

Subscribe to  
**EVOLVER** MAGAZINE  
online at  
**[evolver.org.uk](http://evolver.org.uk)**

Six bi-monthly issues for £25





**activate**  
performing arts

# InsideOut

DORSET

An  
outdoor arts  
festival celebrating  
extraordinary events  
in extraordinary  
places

**17-26  
September 2021**

**Moors Valley Country Park and Forest:**  
17-19 September 2021

**Poole:** 18 September 2021

**Christchurch:** 19 September 2021

**Weymouth:** 24-26 September 2021

**Symondsburry Estate:** 24-26 September 2021

**[insideoutdorset.co.uk](https://insideoutdorset.co.uk)**

**FREE  
events for  
the whole  
family**

**activate**  
Sparking possibility



Supported using public funding by  
**ARTS COUNCIL  
ENGLAND**





WESSEX



## THURSDAY 7 OCTOBER



# Outlets and Sponsors

**EVOLVER MAGAZINE** is available **FREE** at the following Wessex outlets:

ABBOTSBURY: Abbotsbury Studio, Dancel Gallery. AXMINSTER: Archway Bookshop, Axminster Arts Café, Sublyme Café. BATH: Bath Artists' Studios, Beaux Arts, The Bell Inn, The Edge / ICIA, Holburne Museum of Art, Michael Tippett Centre, University of Bath, Victoria Art Gallery. BEAMINSTER: Little Toller Books. BLANDFORD: Blandford Fashion Museum, Bryanston Arts Centre, Forum Café, Forum Framers. BOSCOMBE: Artcetera. BOURNEMOUTH: All Fired Up, Miramar Hotel, Pavilion Dance, Royal Bath Hotel, Russell-Cotes Museum & Art Gallery. BOWER HINTON: The Hollies Hotel. BRADFORD ON AVON: Wiltshire Music Centre. BRIDGWATER: Bridgwater Arts Centre, Clayhill Arts, Engine Room. BRIDPORT: Beach & Barnicott, Bridport Arts Centre, Bridport Old Books, The Bull Hotel, Clocktower Music, Literary and Scientific Institute, Lyric Theatre. BRISTOL: Arnolfini, Bocabar, The Bristol Artisan, Bristol Beacon, Bristol Fine Art, Centrespaces, Clifton Fine Art, Create Centre, Folk House, Jamaica Street Artists, Lime Tree Gallery, Bristol Old Vic, PRSC Gallery, RWA, Spike Island, St George's, Tobacco Factory, Trinity Centre, UWE, Watershed. BROADWINDSOR: Redlands Yard. BRUTON: At The Chapel, Hauser and Wirth. BUDLEIGH SALTERN: Brook Gallery. BURNHAM ON SEA: Princess Theatre & Arts Centre, Seabreeze Gallery. CASTLE CARY: Bailey Hill Bookshop, David Simon Gallery, Trowbridge Gallery. CHARD: Art Café, Barleymow's, Hornsbury Mill Hotel. CHARLTON: Glebe Gallery. CHARMINSTER: Flux Art Supplies. CHEDDAR: Cheddar Art School, Sketch Café. CHEDDON FITZPAINE: Hestercombe Gallery. CHESIL BEACH: Fine Foundation Centre. CHIPPENHAM: Chippenham Museum. CHRISTCHURCH: Hatch Gallery, Hayloft Gallery, Red House Museum, Regent Centre. CLEVEDON: Fizz Gallery, Studio 3. CORFE CASTLE: Boilerhouse Gallery, Gallery 41, Morton House Hotel, Village Stores. CORSHAM: Pound Arts. CREWKERNE: Phoenix Books. CROCKERTON: Bull Mill Arts. CROWCOMBE: Halsway Manor. CULLOMPTON: Cullompton Community College. CULMSTOCK: The Strand Stores. DEVIZES: Wiltshire Museum. DORCHESTER: Dorchester Arts, Duke's, Frank Herring & Sons, Gallery on The Square, The Little Keep, Vinyl Van. EAST LAMBROOK: East Lambrook Manor Gardens. EXETER: Academy of Music, Barnfield Theatre, The Cavern, Corn Exchange, Exeter School of Art, Glorious Art Cafe, Phoenix Arts Centre, Royal Albert Memorial Museum, Southgate Gallery. FROME: Bat Print Studio,

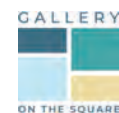
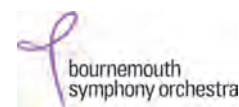
Black Swan Arts, Cheese and Grain, Fiat Lux, Merlin Theatre, Mount, Raves From The Grave, Rook Lane Arts, Rise Centre, Whittox Gallery. GILLINGHAM: Bowridge Gallery, The Idea Works, Slade Centre. GLASTONBURY: Abbey Muse Gallery, Bocabar, Facets Of Avalon, Glastonbury Galleries, Heart Of The Tribe Gallery, Red Brick Building, Rural Life Museum. HEMYOCK: Healthy Living Centre. HESTERCOMBE: Hestercombe Gallery. HIGHCLIFFE: In The Frame. HOLTON HEATH: Holton Lee. HONITON: The Beehive, Boston Tea Party, Hybrid Gallery, School Of Art And Wellbeing, Strummer Pink, Thelma Hulbert Gallery. ILMINSTER: Courtyard Gallery Cafe, Dillington House, Ilminster Arts Centre. KEYNSHAM: Chocolate Quarter. LANGPORT: 4 Every Cloud, Art Tea Zen, Hanging Gallery, Shakspeare Glass. LYME REGIS: Blue Lias, Coombe Street Gallery, Fine Art Framing, Marine Theatre, Studio 19. LYTCHETT MINSTER: Barn Cafe, Courtyard Craft Centre. MARLBOROUGH: Framemakers, Rabley Contemporary Drawing Centre. MARTOCK: Martock Gallery Yandles Cafe. MILTON ABBAS: Dorset Crafty Barn, Luccombe Hub. MINEHEAD: Courtyard Framing, Leo Davey Gallery, Regal Theatre. MORCOMBELAKE: Artwave West. MUCHELNEY: John Leach Gallery. NEW MILTON: Forest Arts. NEWTOWN: R. C Arts. NORTH CURRY: Community Café. OTTERTON: Otterton Mill. PENN HILL: Josephine Wall Shop. PEWSEY: McNeill Gallery. POOLE: Arts University Bournemouth, Boiler Room Records, Bournemouth University Atrium Gallery, Guildhall Gallery, Lighthouse, Gallery Upstairs, Originals, Poole Museum, Poole Violins, Towngate Gallery And Framing. PORLOCK: Churchgate Gallery, Melody Art. PORTLAND: B-Side Outpost, White Stones. POUNDBURY: Gallery On The Square, Store 6. SALISBURY: City Hall, Fisherton Mill, Framemakers, Noble Art Supplies, Salisbury Arts Centre, Salisbury Museum, Salisbury Playhouse, Studio 53, Wiltshire Gallery, Young Gallery. SEATON: Arts Café, Savooni Art Gallery. SEAVINGTON: Village Shop. SHAFESBURY: The Cygnet, Grosvenor Hotel, Pictureframes, Shaftesbury Arts Centre. SHEPTON MALLET: One Craft Gallery. SHERBORNE: Artslink, Elementum Gallery, New Digby Hall, Old Barn Framing Gallery, Winstone's. SIDMOUTH: East Devon Art Academy, Flo and Us, Kennaway House, Winstone's. SOMERTON: ACE Arts, Gifted Company & Gallery Coffee Shop. SOUTH CADBURY: Chapel Cross Tea Rooms. SOUTH PETHERTON: David Hall. STALBRIDGE: Dike & Sons. STOBOROUGH: Furzebrook Studios. STOKE ST GREGORY: Willow & Wetlands Centre. STOURHEAD: First

View Gallery. STREET: Millfield School Atkinson Gallery, Strode Theatre. STURMINSTER NEWTON: The Exchange, Poet's Corner, Wessex Photographic. SWANAGE: 4Matt Framers and Gallery, Durlston Castle, Hollinghead Studio Gallery, L'Artishe Gallery, Mowlem Theatre, Mulberry Bush Gallery, Purbeck New Wave Gallery, Quarr Gallery, Sansom Gallery. SYMONDSBURY: Sou'-Sou'-West. TAUNTON: Brewhouse Theatre, CIC CIC, Fine Art And Framing, Jane Amour, Mount Somerset Hotel, Quantock Art And Framing, Queen's College, Tacchi-Morris Arts Centre, University Centre Somerset. TINCLETON: Tingleton Gallery. TISBURY: Messums Wiltshire. TIVERTON: Lantic Gallery. TROWBRIDGE: Arc Theatre, Court Street Gallery, Drawing Projects, The Lamb, Trowbridge Arts, Trowbridge Museum. VERWOOD: Campbell & Rose Gallery, The Hub. WAREHAM: Creative Gallery, Priory Hotel, Rex Cinema. WATCHET: Watchet Gallery. WELLINGTON: Old Brick Workshop. WELLS: A2 Gallery, Andelli Art, Good Earth, Heritage Courtyard Studios, Somerset Guild of Craftsmen Gallery and Shop. WEST BAY: Sladers Yard. WEST COKER: Lanes, Old School Room. WESTHAY: Somerset Crafts. WESTON-SUPER-MARE: Frame Station, Playhouse, Weston College. WEYMOUTH: Weymouth College, Weymouth Pavilion. WILLITON: Breeze Art Gallery. WIMBORNE: Allendale House, Square Records, Walford Mill Craft Centre. WINSOMBE: Sidcot Arts Studio. WIVELISCOMBE: Community Office. WOODBURY: Woodbury Studio Gallery. WORTH MATRAVERS: Burngate Stone Centre. WRINGTON: Barleywood Studios. YEOVIL: Octagon Theatre, Yeovil Art Space. YETMINSTER: Old School Gallery.

Plus selected TOURIST INFORMATION CENTRES and LIBRARIES throughout Wessex

## EVOLVER SPONSORS

ACE Arts  
Acoustic Distribution  
Activate  
Artsreach  
Aztec Media  
B-Side  
Black Swan Arts  
Boilerhouse Gallery  
Bournemouth Symphony Orchestra  
The Creative Gallery  
Dorset Visual Arts  
Fisherton Mill  
Gallery on the Square  
Heart of the Tribe Gallery  
Lighthouse  
Lyme Bay Arts  
Mount  
The Slade Centre  
Sladers Yard  
Somerset Art Works  
Stephens & George  
Tingleton Gallery  
Wiltshire Creative





# WHAT ARE YOU LOOKING AT?

## ANGELA CHARLES

15 OCT - 7 NOV 2021

EXHIBITION OF  
NEW WORKS & FILM

**Preview**

Thursday 14 October 6 - 9pm

**Exhibition Open**

Thursday/Friday/Saturday 11am - 5pm

Sunday 11am - 3pm


**More information [osrprojects.co.uk](http://osrprojects.co.uk)**

OSR Projects, Church Street  
West Coker, Somerset, BA22 9BD  
01935 862201

**OSR/  
PROJ  
ECTS**



Supported using public funding by  
**ARTS COUNCIL  
ENGLAND**

 **South Somerset  
District Council**

