

# EVOLVER MAGAZINE

THE **FREE** WESSEX ARTS AND CULTURE GUIDE





# Sou'-Sou'-West

Contemporary Art  
Symondsburys Estate  
Bridport DT6 6HG

Sculpture Garden (at night) - © Nigel Moores 2021

**The Sky is the Limit**  
Christine Allison  
23 October - 07 November

**Language of Colour**  
Patrick Jones & Nigel Moores  
13 - 28 November

**Sou'-Sou'-West Winter Open**  
(call for entries by 24/11)  
04 December - 09 January  
Contact: phil@sousouwest.co.uk

**All Wrapped Up**  
Design Makers Exhibition  
01 November - 09 January



Supported using public funding by  
**ARTS COUNCIL  
ENGLAND**

**Gallery & Shop**  
Daily: 10:30 - 16:30  
[sousouwest.co.uk](http://sousouwest.co.uk)



## Hollingshead Studio Gallery

Artworks by Josh Hollingshead and Azita Heartly  
25 Commercial Road, Swanage, BH19 1DF  
[joshhollingshead.net](http://joshhollingshead.net) · 07512 173840

bespoke picture frames.  
**Made to Last.**



[mount-art.co.uk](http://mount-art.co.uk)

## ERIC RAVILIOUS: DOWNLAND MAN

### EXHIBITION

EXPLORING FOR THE FIRST TIME, ERIC RAVILIOUS'S FASCINATION FOR  
THE CHALK DOWNLANDS OF WILTSHIRE AND SUSSEX



25 SEPTEMBER TO 30 JANUARY 2022  
OPEN SEVEN DAYS A WEEK

[www.wiltshiremuseum.org.uk](http://www.wiltshiremuseum.org.uk)

41 Long Street,  
Devizes, SN10 1NS





# EVOLVER MAGAZINE 122

November and December 2021



## Exhibit A

### Neville Gabie: Better Together, part 3

Photograph, 2021

ARTIST'S STATEMENT: "What does it mean to be part of a community? Over the last 18 months, I have reflected on common needs, shared lives and who we are in a world mid pandemic, where we learned to connect without physical closeness. In 2019 I was commissioned by Contains Art to explore what it meant to be part of a community for an exhibition at East Quay, Watchet called *More Together Than Alone*. I created three new works, one of which is this reference to Renoir's *Luncheon of the Boating Party* which draws on an artistic tradition of reinterpreting well-known images, but relocates the scene of communal enjoyment with a cast from Watchet itself. After months of restrictions, I wanted to pay homage to what we have lost and what we hope to regain."

#### 'MORE TOGETHER THAN ALONE'

**Until 3 January:** East Quay Gallery, East Quay, Harbour Road, WATCHET, TA23 0AQ. Tuesday - Sunday 10am - 6pm. 01984 263103 / [eastquaywatchet.co.uk](http://eastquaywatchet.co.uk).

17 SEPT - 30 DEC 2021

## CONNECT

people, art and place



THE VANNER GALLERY

45 High Street Salisbury SP1 2PB

[vannergallery.com](http://vannergallery.com)



@henryburnett



# Visual Arts

November and December 2021

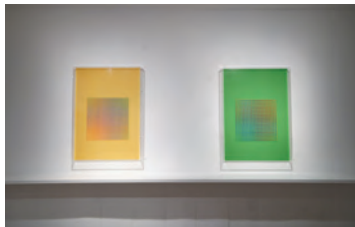


## Connect

"Committed to exhibiting original artworks, The Vanner Gallery showcases the best of contemporary art and craft practice across a range of materials and media. In the opening show, curator Prudence Maltby explores the concept of connection at a time when the city emerges from adversity. Following the Novichok attacks in 2018 and more recently the pandemic, Maltby uses people, art and place as the cornerstone to examine how we process our experience of living separate lives through uncertainty. The exhibiting artists are Julia Atkinson (below centre), Julie Ayton, Eleanor Bartlett, Brian Bishop, Lucinda Burgess (below left), Henny Burnett (above), Fran Donovan, Ruth Dresman, Susan Francis (below right), Mirka Golden-Hann, Michelle Griffiths, Patrick Hallissey, Alex Hanna, Julia Polonski, Jane Ponsford, Peter Randall-Page, Roger Stephens, Joanna Still, Anita Taylor, and Julieann Worrall Hood."

**Until 30 December:** The Vanner Gallery, 45 High Street, SALISBURY, SP1 2PB. Tuesday - Saturday 10am - 5pm. [vannergallery.com](http://vannergallery.com).

Photographs by Ash Mills



### PERCY LIZZARD Until 2 November

The Gallery, Shaftesbury Arts Centre, Bell Street, SHAFTESBURY, SP7 8AR. Monday - Saturday 10am - 4pm. [shaftesburyartscentre.org.uk](http://shaftesburyartscentre.org.uk).  
*"Percy Lizzard's paintings are inspired by exotic destinations, typically featuring brightly coloured birds and animals."*



### ANGELA CHARLES: 'WHAT ARE YOU LOOKING AT?'

Until 7 November

OSR Projects, Church Street, WEST COKER, BA22 9BD. Thursday - Saturday 11am - 5pm, Sunday 11am - 3pm. [osrprojects.co.uk](http://osrprojects.co.uk).  
*"Angela's new works look at the elements of everyday life that disable her, her life growing up in a seaside town and her new challenges of coming out as a blind painter."*

Above: 'Batchelor Green'

### BEN JEFFERY: 'MIDSUMMER ROSES'

Until 7 November

Pen Gallery, 28 Kingland Crescent, POOLE, BH15 1TB. Tuesday - Saturday 10am - 5pm, Sunday 11am - 4pm. 07909 154593 / [pengallery.co.uk](http://pengallery.co.uk).  
*"This series of photographs invites an interpersonal exchange and dialogue between two bodies of work, one colour, one black and white, in an effort to explore the perennial existence and embodiment of feelings within memories and in turn, within photography."*



## FROME ART SOCIETY

PRIZEWINNERS EXHIBITION

5 Oct - 14 Nov 2021

## Opportunities for Artists

Makers shop  
Festive markets  
Round Tower exhibition space  
Art Open returns in 2022

galleries | studios | shop | cafe  
2 Bridge Street, Frome BA11 1BB



BLACKSWANARTS

01373 473980 | [www.blackswanarts.org.uk](http://www.blackswanarts.org.uk)

FREE ENTRY Registered Charity No 292463



## MOISH SOKAL: 'NEW DAY'

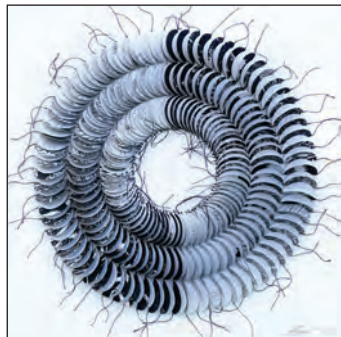
**Until 7 November**

The Courthouse Gallery, Market Place, SOMERTON, TA11 7LX. Tuesday - Saturday 10am - 5pm. [courthousegallery.uk](http://courthousegallery.uk). Watercolour paintings by Moish Sokal.

## CHRISTINE ALLISON: 'THE SKY IS THE LIMIT'

**Until 7 November**

Sou'-Sou'-West Arts Gallery, Symonds Estate, BRIDPORT, DT6 6HG. 10.30am - 4.30pm. 01308 301326 / [sousesouwest.co.uk](http://sousesouwest.co.uk).



## AMY BONSOR: 'REpetition, REconstruction and Rhythm'

**Until 13 November**

ACE Arts, Market Place, SOMERTON, TA11 7NB. Tuesday - Saturday 10am - 5pm. 01458 273008 / [acearts.co.uk](http://acearts.co.uk). "A collection of tactile pieces exploring repetition, transition and changing surfaces. Constructed with paper and stitch and inspired by the macro and microscopic, tiny unnoticed moments of beauty from stone walls to lichen and moss."

## MARZIA COLONNA

**Until 14 November**

Sladers Yard, WEST BAY, Bridport, DT6 4EL. Wednesday - Saturday 10am - 4.30pm. 01308 459511 / [sladersyard.co.uk](http://sladersyard.co.uk).

## SHELLEY DYER-GIBBINS: 'COOL CUTS'

**Until 15 November**

Heart of The Tribe Gallery, 74 High Street, GLASTONBURY, BA6 9DZ. 11am - 5pm. [heartofthetribe.com](http://heartofthetribe.com). "Retro-toned pieces primarily featuring linocut printmaking." See front cover.



'MIDSUMMER'

## Philip Sutton: Colours Through Life

"At the age of 93, Philip Sutton RA still paints and draws every day as he has throughout his life. His work has always been full of colour, painted with a kind of abandon that is truly dazzling."

**20 November - 9 January:** Sladers Yard, WEST BAY, Bridport, DT6 4EL. Wednesday - Saturday 10am - 4.30pm. 01308 459511 / [sladersyard.co.uk](http://sladersyard.co.uk).

## RUTH PIPER: 'EMBLEMS OF HOPE'

**Until 30 November**

Bishop's Eye Gallery, 12 Market Place, WELLS, BA5 2RB. Monday - Wednesday 9am - 6pm, Thursday - Saturday 9am - 10pm. 01749 938180 / [bishopseye.com](http://bishopseye.com). "The central themes of Ruth's work explore dreamlike notions of transition and transformation that link to both a physical and psychological experience of place and belonging."

## 'WHERE THE MIST RISES'

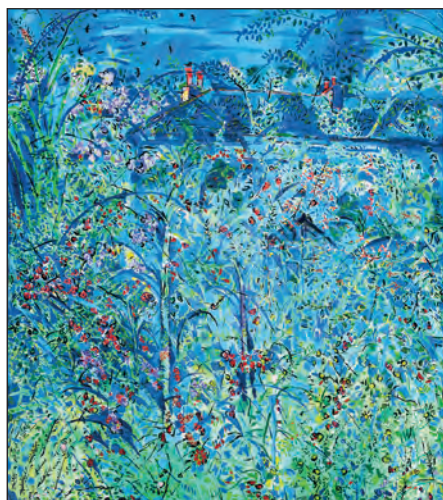
**Until 5 December**

Rotunda Gallery, Lyme Regis Museum, Bridge Street, LYME REGIS, DT7 3QA. Tuesday - Saturday 10am - 5pm, Sunday 10am - 4pm. £5.95. 01297 443370 / [lymeregismuseum.co.uk](http://lymeregismuseum.co.uk). "Based on satellite photographs and historic maps of the Dorset coastline, Annie Ward's abstract paintings explore those mutable spaces where the land meets the sea."

## KATE WYATT: 'SOMETHING WILD'

**Until 12 December**

Gallery On The Square, Queen Mother Square, DORCHESTER, DT1 3BL. Monday - Saturday 9.30am - 5pm, Sunday 11am - 4pm. 01305 213322 / [gallerypoundbury.co.uk](http://gallerypoundbury.co.uk). "Leading wildlife artist Kate Wyatt, who grew up in Dorset, returns to the county with a rare exhibition."



MARZIA COLONNA MRBS  
Gaia: recent collages & sculpture  
continues until 14 November 2021

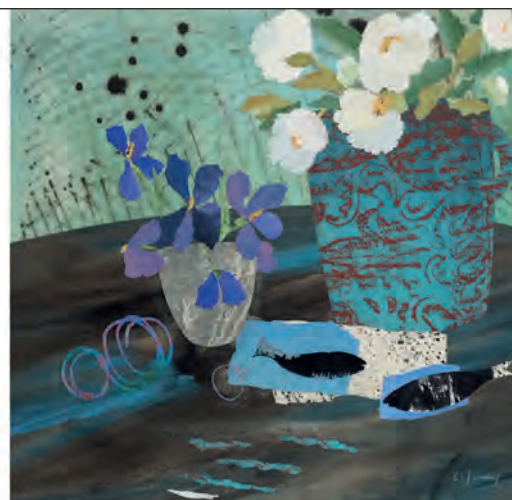
PHILIP SUTTON RA  
Colours Through Life  
20 November 2021 - 9 January 2022

PETTER SOUTHALL furniture

CAFÉ SLADERS Seafood Restaurant/Café

SLADERS YARD

Contemporary Art & Craft Gallery  
West Bay Bridport Dorset DT6 4EL  
[gallery@sladersyard.co.uk](mailto:gallery@sladersyard.co.uk) 01308 459511  
[sladersyard.co.uk](http://sladersyard.co.uk)





# Tincleton Gallery

contemporary fine art in Dorset

Together Again

gallery & guest artists

10 September - 31 December



detail from "Flight of the crows" oil on linen  
by Kim Pragnell

The Old School House, Tincleton, near Dorchester, DT2 8QR  
Friday / Saturday / Sunday / Monday • 10am – 5pm  
01305 848909 • tinctongallery.com

## Visual Arts



### Marian Bruce: In Movement

"Drawing and sculpture directly inspired by Marian's collaboration with Acosta Danza in Havana Cuba in 2018. Visual artist and theatre designer Marian Bruce presents selected images initiated over a period of her five week stay in Havana, Cuba, while designing Christopher Bruce's dance production, *Rooster*. This small body of work conveys the passion and vigour of the performers through a variety of mark-making and rudimentary sculptural practices. The exhibition also includes Matt Hayden's photographs taken in the rehearsal studio in Havana."

**3 - 27 November:** Gallery at The Station, Station Approach, FROME, BA11 1RE. Wednesday, Thursday and Sunday 10am - 4pm, Friday and Saturday 10am - 9pm. 07970 462395 / @galleryatthestation.

#### DAVID RINGSELL: 'NEW VIEWS IN FAMILIAR PLACES'

Until 1 January

The Artery Art Café, 7 Richmond Place, BATH, BA1 5PZ. Wednesday - Friday 8.30am - 8.30pm, Saturday 9.30am - 9.30pm, Sunday 10am - 8.30pm. 01225 442290. *Paintings.*

#### EDUARDO CHILLIDA

Until 3 January

Hauser & Wirth, Durslade Farm, Dropping Lane, BRUTON, BA10 0NL. Tuesday - Sunday 10am - 5pm. hauserwirth.com/Somerset.

"Sculptural works and drawings by one of the foremost Spanish sculptors of the twentieth century."

#### THOMAS J PRICE. 'THOUGHTS UNSEEN'

Until 3 January

Hauser & Wirth, Durslade Farm Dropping Lane, BRUTON, BA10 0NL. Tuesday - Sunday 10am - 4pm. 01749 814060 / hauserwirth.com/Somerset. "Two decades of conceptual enquiry spanning film, early sculpture, and the artist's largest figurative bronze to date."



#### 'A CENTURY OF BRITISH ART'

Until 6 March

Russell-Cotes Art Gallery and Museum, East Cliff, BOURNEMOUTH, BH1 3AA. Tuesday - Sunday 10am - 5pm. £7.50 / £4. 01202 128000 / russellcotes.com.

Above: Harold Williamson 'Spray'

#### 'MAKING MARKS'

1 - 28 November

Creative Innovation Centre, Memorial Hall, Paul Street, TAUNTON, TA1 3PF. Monday - Sunday 10am - 4pm. 01823 337477. "Artworks exploring mark-making in the 21st Century by Andy Baker, Norman Barns, Keith Croker, Sarah Darke, Jenny Graham and Adam Grose."

## Keith Rogers BEYOND THE GOLDEN REEDS

BRIDPORT ARTS CENTRE  
ALLSOP GALLERY

LARGE SCALE · SEMI-ABSTRACT · EXPRESSIVE PAINTINGS

16 October - 13 November



10am - 4pm Tuesday - Saturday

South Street, Bridport, Dorset, DT6 3NR, 01308 427183  
www.keithrogers.co www.bridport-arts.com

BRIDPORT  
ARTSCENTRE



Dorset  
Council





## 'EXCEPTIONAL OILS'

**2 - 13 November**

Hybrid Gallery, 51 High Street, HONITON, EX14 1PW. Tuesday - Saturday 10am - 5pm. 01404 43201 / hybrid-devon.co.uk. "Working in the still life genre, using the medium of oils, Yuki Aruga, Niggy Dowler and Daniel Morley achieve different, extraordinary outcomes which challenge preconceptions."

## 'NATIVE SPECIES'

**2 - 13 November**

Hybrid Gallery, 51 High Street, HONITON, EX14 1PW. Tuesday - Saturday 10am - 5pm. 01404 43201 / hybrid-devon.co.uk. "Dean Patman uses found materials to upcycle into sculptures of our native animals whilst Richard Adams focuses on the foibles of the human species and their pets in the UK."

## ANNABEL CARINGTON:

### 'NOCTURNE'

**3 - 9 November**

The Gallery, Shaftesbury Arts Centre, Bell Street, SHAFTESBURY, SP7 8AR. Monday - Saturday 10am - 4pm. 01747 855243 / shaftesburyartscentre.org.uk. "Local and internationally known, artist explores her fascination with how sleep maps and traces our lives through paintings, drawings and installations."

## AMY ALBRIGHT

**3 - 26 November**

Artwave West, MORCOMBELAKE, DT6 6DY. Wednesday - Saturday 10am - 5pm. 01297 489746 / artwavewest.com. "Amy Albright has developed a visual language that alludes to the interconnecting natural forms and patterns that surround us."

## 'THE THREE CROWNS'

**4 - 30 November**

Chippenham Museum, 9 - 10 Market Place, CHIPPENHAM, SN15 3HF. Monday - Saturday 10am - 4pm. 01249 705020 / chippenham.gov.uk/chippenham-museum. "In his first solo exhibition, local artist Sam Heath depicts the everyday life of his local pub and its community."



## Keith Rogers: Beyond The Golden Reeds

"Keith Rogers lives on the Dorset coast and wakes up every morning to breathtaking views and the wondrous habitat surrounding Stanpit Marsh. It's about the harbour, the marsh, creeks and perfect moons. It's about the hedgerows and tabletop flowers, and the reeds that turn into shimmering wands of gold in the morning sun. All this magic is reflected in his series of large scale, semi-abstract and expressive paintings. Running alongside a series of large scale, expressive paintings, and at the core of the exhibition, is a 600cm wooden line installation (above). It's created from a complex drawing of washed up reeds at Mother Siller's Channel on Stanpit Marsh. As the golden reeds draw the night-time waves, they trace a line between water and land. In the midst of the transition, they pause and make their mark."

**6 October - 13 November:** Allsop Gallery, Bridport Arts Centre, South Street, BRIDPORT, DT6 3NR. Tuesday - Saturday 10am - 4pm. 01308 427183 / bridport-arts.com / keithrogers.co.

## SHAFTESBURY GROUP ART FAIR

**5 November**

Shaftesbury Town Hall, High Street, SHAFTESBURY, SP7 8LY. 10am - 4pm. 01747 853822.

## CAM VALLEY ARTS TRAIL

**6 and 7 November**

Various locations throughout CAMERTON, BA2 0NL. 11am - 4pm. camvalleyartstrail.co.uk. "Local artists are thrilled to be back at live venues and are just longing for you to come and visit one of 7 venues in and around the Cam Valley."

## JEMMA GUNNING: 'REMNANTS'

**6 and 7 November**

Hours, 10 Colston Yard, BRISTOL, BS1 5BD. 11am - 5pm. 07766 054659 / hours-space.com. "Etchings and lithographs. A portal into our fading heritage, recording fragile industrial environments."



## TERRY JEAVONS: 'UN CLIMATE CHANGE CONFERENCE OF THE PARTIES'

**6 November - 24 December**

Thelma Hulbert Gallery, Dowell Street, HONITON, EX14 1LX. Thursday - Saturday 10am - 5pm. thelmahulbert.com. "Photographs from the COP conferences of Doha, Warsaw and Paris, showing the venue, formalities, routines, protests and intense final negotiations to move the climate change arguments forwards."

## NICK ANDREW AND TANYA HINTON: 'WE WENT FOR A WALK'

**10 - 16 November**

The Gallery, Shaftesbury Arts Centre, Bell Street, SHAFTESBURY, SP7 8AR. Monday - Saturday 10am - 4pm. 01747 855243 / shaftesburyartscentre.org.uk.

## DVA SALON COLLECTIVE: 'WE'RE BACK'

**10 - 23 November**

The Malthouse Gallery, The Town Mill, Mill Lane, LYME REGIS, DT7 3PU. 01297 444042. 11am - 4pm. 01297 444042 / townmill.org.uk. "This exhibition brings together diverse thoughts ranging from contemporary issues of Covid and Black Lives Matter to cultural history, creating interesting and thought provoking dialogues for the viewer."

## EARLY CAREER ARTISTS SHOW

27 NOVEMBER 2021  
- 8 JANUARY 2022

THE YOUNG GALLERY  
MARKET PLACE, SALISBURY

FREE ENTRY

www.younggalleriesalisbury.co.uk



@younggalleriesalisbury







## Johannes von Stumm

Sculpture has been a driving force for Johannes Von Stumm since he was a teenager, fuelled by a visit to Paris where he first encountered the works of Auguste Rodin. It was the truth and rawness of Rodin's work that captured his imagination. Richard Serra's massive sheet steel works unfolding in the landscape have been another significant source of inspiration. He has always felt that sculpture chose him rather than the other way round.

Von Stumm is the ultimate craftsman, working in bronze, steel, iron, glass, stone and wood. His need to understand the nature of his chosen materials has led him to pour iron, fabricate in stainless steel and learn to blow glass. The mastery of his craft facilitates his pursuit of experimentation. It allows him to make work that transcends the mechanics of fabrication: 'It is not the material which gives it the edge it's the spirituality, the ideas.'

An early focus was his determination to solve the technical problem of combining three apparently incompatible materials, stone, iron and glass. Making a work using these three elements, creating a 'fine balance where none outshines the other', is a long, complex process from initial idea to realisation of a finished piece. It involves trial and error and

endless adjustment so that the individual components eventually fit together perfectly.

Initial inspirations for his rectangular works came from his drawings in response to abstract designs on Japanese warrior crests and to the simple tongue and groove joints in wood. Although able to blow glass Von Stumm outsourced that part of the process to master glassmakers. One of the most challenging parts for the glass blowers is managing the indentations in the steel moulds which mimic the tongue and groove. These 'hooks' facilitate the slotting together of the different parts of the sculpture.

Von Stumm has worked with granite and with Portland Stone which is quarried on the Isle of Portland in Dorset. This Jurassic

limestone is heavily fossil-marked providing a surface that creates another language alongside the conversation between the glass and metal. The initial multi-faceted works, informed by the different qualities of these materials, were square or rectangular but a client commission led him to experiment with circular forms. These works tend towards an encircling embrace whilst the rectangular ones seem more secretive.

*Nautilus II* is a particularly beautiful example of a circular form. Its brushed steel wing swirls with an upward movement which brings to mind Hokusai's *The Wave*. The light that is reflected and absorbed by the glass emphasises its fragility and its strength. Now that he has resolved the technical issues associated with combining these materials and achieved the balance and equilibrium he sought he is moving forward with his *Immaterial Figures*.

His initial experimentations using glass to make a figure filled with light were frustrated because of the limitations of scale imposed by glass as a material. Turning to bronze and stainless steel these now monumental sculptures, sited outside, have a strong relationship with the landscape. They reach upwards towards infinity embracing the air around and within them. The void, the figure itself, is often filled with a view of the landscape. He makes use of the negative space, so that the figure doesn't actually physically exist, it is created by the light and shadow. It is a space bordered by intransigent metal.

Von Stumm's *Immaterial Figures* question the nature of humanity and its place in the continuum. Spirituality and contemplation are key elements. They tap into the universal concern that, confronted with our own mortality, we question what remains. The conflict between spirituality and individuals as sentient beings is what he is grappling with now.

Substantial in their insubstantiality, Von Stumm's *Immaterial Figures* grasp at the essence of being. When you put your hand out to touch the figure there is nothing there. What is there is a structure that is essentially supporting nothingness. They pose questions about the nature of the object and the nature of sculpture itself.

Fiona Robinson

### 'TOGETHER AGAIN'

**Until 31 December:** Tincton Gallery, The Old School House, TINCLETON, near Dorchester, DT2 8QR. Friday - Monday 10am - 5pm. 01305 848909 / [tinctongallery.com](http://tinctongallery.com). "Mixed show featuring a selection of sculptures by Johannes von Stumm."



'NAUTILUS II'



# WE'RE BACK The Salon Collective

New & recent work from Dorset Visual Arts

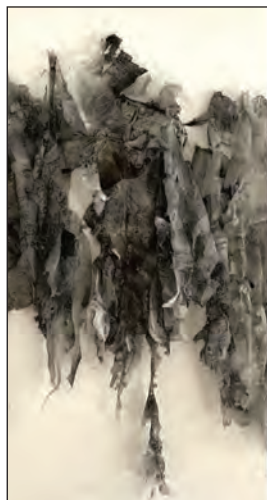


**THE TOWN MILL**  
John Austin-Williams  
Imogen Bittner  
Helen Brasher  
Jo Burlington  
Jacqueline M Byrne  
Norrie de Montigny  
Claudia Dharamshi  
Hugh Dunford Wood  
Clare Hawkes  
Sarah Hough  
Caro Lester  
Caroline Liddington  
Alethea Lillitos  
Jem Main  
Carrie Mason  
Lisa Riot  
George Paul Sainsbury  
Helen Simpson  
Ilona Skladzien  
@dva\_salon\_collective

THE MALHOUSE GALLERY  
THE TOWN MILL

Wednesday 10th – Tuesday 23rd November  
Open daily 11am to 4pm

[www.townmill.org.uk/visitors-information/#howtofindus](http://www.townmill.org.uk/visitors-information/#howtofindus)



3 - 29 November 2021 | 10.30 - 4.00

## 'THE SAME-OTHER'

DRAWING EXHIBITION BY ILONA SKLADZIEN

Fine Foundation Gallery |

Durlston Country Park | Lighthouse Road |  
Swanage | BH19 2JL

Audio Descriptions available.



BECKINGTON CREATIVES

## Artists Open Houses

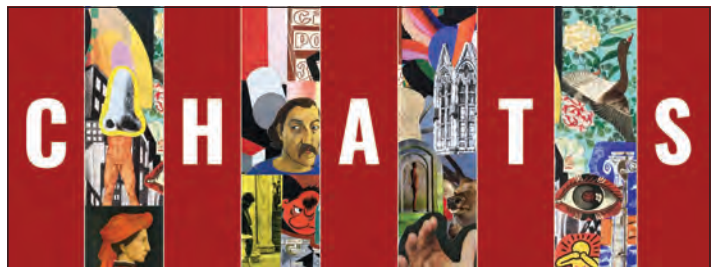
Friday 19 Nov - Sunday 21 Nov 2021  
Open 10am - 5pm

LAUNCH PREVIEW | Thurs 18 Nov | 4 - 6pm

Showcasing paintings, sculptures,  
printmaking, ceramics, photography,  
mosaics and jewellery by local artists

Beckington Village, Near Frome, Somerset BA11

Beckington-Creatives



## Cedars Hall Arts Talks Series

W E L L S

We launch CHATS in response to Antony Gormley's new sculpture DOUBT, on loan to Wells until March 2023. These monthly talks will take place at 7pm in Cedars Hall, Wells Cathedral School. Young musicians from Wells will perform in the auditorium before each talk. Conversations will continue after the talk, join us for a glass of wine and supper. Booking essential.



18.11.21 **Gavin Plumley**, cultural historian, writer and broadcaster. *The Uncertain Soul*. How the artistic minds of Austria and Germany charted the uncertainties of the early part of the 20th century.

20.12.21 **Sir John Eliot Gardiner**, conductor and polymath. *The Flight into Egypt* by Adam Elsheimer. Sir John Eliot Gardiner has long been fascinated by the intersection of arts and science at the turn of the 17th Century - the time not only of Caravaggio, Galileo and Kepler but also the great naturalistic composer, Monteverdi.



13.01.22 **Richard Long RA**  
Through the medium of walking, in Richard Long's work, time, space and distance become crucial expressive elements.

17.02.22 **Tim Marlow**, Chief Executive and Director of The Design Museum, London

10.03.22 **Randall Wright**, film maker and director

03.04.22 **Antony Gormley**  
in conversation with **Professor Stephen Bann**

14.04.22 **Rachel Campbell-Johnston**, chief art critic, The Times

19.05.22 **Dr Xa Sturgis**, Director of The Ashmolean, Oxford

16.06.22 **Olivia Fraser**, artist and great niece of Surrealist painter Eileen Agar



CHATS will be livestreamed

CHATS is kindly supported by

**Terence Mordaunt** and the **Blair Foundation**

Tickets are available online at [cedarshall.events](http://cedarshall.events)

or through the box office: 01749 834483

£10 per ticket, under 19s free



## 'HILLVIEW ART'

**13 and 14 November**

Hillview, Linwood, RINGWOOD, BH24 3QT. 10.30am - 4.30pm. 01425 472462 / angelaperrett.co.uk. "Artistic cheer in a tranquil forest setting. Ceramics, glass, painting, metal sculpture and woodturning."

## AUDE VAN RYN

**13 - 26 November**

Andelli Art, Mendip House, Upper Breach, South Horrington, WELLS, BA5 3QG. Tuesday - Saturday 10am - 5pm. andelliart.com. "Aude Van Ryn's practice explores the aesthetic of forms found in nature, everyday objects and in the human figure through clay. Influences and visual inspiration come from various sources, from mid 20th century art movements to ceremonial objects from primitive and ritualistic cultures."



## THE ARBOREALISTS: 'EXPLORING EXMOOR TREES AND WOODLANDS'

**13 - 28 November**

Lanacre Barn Gallery, Lanacre, WITHYPOOL, TA24 7SD. 11am - 4pm. moorlandart.com. "Around 60 works exploring Exmoor's most important woodlands throughout the seasons."

Above: Fiona McIntyre 'Oak Tree Forms, Wistman's Wood'

## PATRICK JONES AND NIGEL MOORES: 'LANGUAGE OF COLOUR'

**13 - 28 November**

Sou'-Sou'-West Arts Gallery, Symondsbur Estate, BRIDPORT, DT6 6HG. 10.30am - 4.30pm. 01308 301326. "Marvellous exhibition by well respected abstract artist Patrick Jones and Nigel Moores."



HOWARD PHIPPS

## Cutting It Fine

"Though printing onto paper from wooden blocks goes back many centuries, wood engraving is a relatively new technique, generally credited to the Northumbrian craftsman, Thomas Bewick (1753 - 1828). With tools traditionally used for metal engraving, Bewick achieved extraordinary levels of precision and detail, achieving considerable fame with his carefully observed and illustrated books of birds and animals. Widely used as a method of mass-producing images in the nineteenth-century, wood engraving was revived on a more intimate, personal scale by a number of fine artists and designers in the early twentieth century. This led a group of British artists to found the Society of Wood Engravers in 1920. Drawn almost entirely from a private Dorset collection, this exhibition will showcase over one hundred and twenty original prints - as well as many rare original illustrated books - by twenty of the leading British wood engravers of the last hundred years. These include Gwen Raverat, Eric Ravilious, John and Paul Nash, Leon Underwood, Rachel Reckitt, Gertrude Hermes, Monica Poole, Anne Desmet and Neil Bousfield."

**Until 16 January:** The Salisbury Museum, The Kings House, 65 The Close, SALISBURY, SP1 2EN. 10am - 5pm. £8. 01722 332151 / salisburymuseum.org.uk

## 'STAYING HOME: TAKING FLIGHT' 17 - 23 November

Kennaway House, Coburg Road, SIDMOUTH, EX10 8NG. 10am - 4.30pm. 07483 224659. "Textile responses to lockdown and our subsequent release."

## RAVI BUTALIA: 'A SENSE OF PLACE IV'

**17 - 30 November**

The Gallery, Shaftesbury Arts Centre, Bell Street, SHAFTESBURY, SP7 8AR. Monday - Saturday 10am - 4pm. shaftesburyartscentre.org.uk.



## BECKINGTON CREATIVES: 'ARTISTS OPEN HOUSES'

**19 - 21 November**

Various locations in BECKINGTON, near Frome, BA11. 10am - 5pm. 07760 338009. "We invite you to experience the wonderful wealth of talent within the village of Beckington, where you will find a wide variety of art on display. Showcasing paintings, sculptures, printmaking, photography, mosaics and jewellery by local artists."

Above: Amanda Bennett

## 'SHADES OF SHIPHAM'

**20 and 21 November**

Village Hall, New Road, SHIPHAM, BS25 1SG. 10am - 5pm. 01934 843660 / tinadoddart.com. "Seven talented local artists showcase their latest work."

## HANNAH LOBLEY: 'WOOD BECOMES PAPER, PAPER BECOMES WOOD'

**20 November - 4 December**

ACE Arts, Market Place, SOMERTON, TA11 7NB. Tuesday - Saturday 10am - 5pm. 01458 273008 / acearts.co.uk. "Hannah's process combines two materials that begin at the same source. The paper is layered back into a solid wood like material, each piece is then hand worked, wood becomes paper becomes wood."

## ARLENE LUKKARINEN: 'EXPANSE'

**29 November - 4 December**

Pen Gallery, 28 Kingland Crescent, POOLE, BH15 1TB. Tuesday - Saturday 10am - 5pm, Sunday 11am - 4pm. 07909 154593 / pengallery.co.uk. "Accentuating Arlene's Finnish roots through her

# GALLERY ON THE SQUARE

Until  
12 December  
**SOMETHING WILD**  
New work by  
wildlife painter  
Kate Wyatt



Open daily, 9.30 to 5  
Sunday 10am to 4pm

From  
14 December  
**WINTER 2021**  
Mixed show:  
gallery artists



John Boyd: Thorncombe Beacon



Debra Sweeney: The Sweep

Regular gallery artists include Colin Willey, John Boyd, Sarah Ross-Thompson, Debra Sweeney, Philip Winstone

**Queen Mother Square, Poundbury, Dorchester DT1 3BL**

01305 213322

www.gallerypoundbury.co.uk



# WESSEX WINTER GUIDE 2021

ILLUSTRATIONS BY PAUL CLEDEN







## Percy Lizzard

CHRISTMAS EXHIBITION

**Lizzard Gallery**

White House Farm, Shaftesbury Road, Motcombe,  
Shaftesbury, SP7 9NR

**Saturday 4 to Sunday 12 December**

Open 10 till 4 every day

Further information 07979 590790

## EVOLVER MAGAZINE

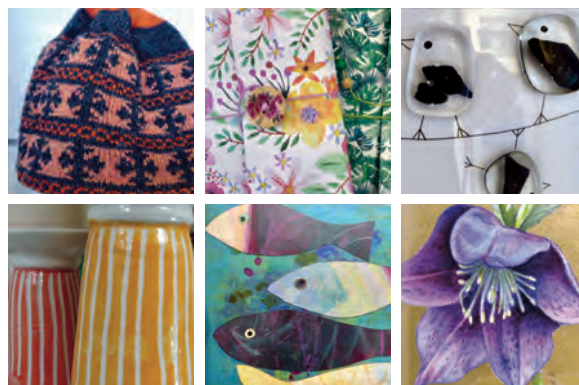
**DEADLINE FOR NEXT ISSUE**

January and February 2022

TUESDAY 7 DECEMBER



1 High Street | Shepton Mallet | BA4 5AA



A co-operative gallery in the centre of Shepton Mallet

Owned and run by local artists, showcasing paintings, prints, jewellery, knitwear, glass, ceramics, hand-bound books, folk music instruments, and greeting cards

Open Monday to Saturday 10am - 5pm

01749 343777

one.craftgallery@gmail.com | onecraftgallery.co.uk



## HESTERCOMBE GALLERY

Contemporary art in reclaimed spaces

13.11.21 - 27.02.22

### Changing Atmospheres

Paul Emmanuel

Fiona Hingston

Trish Morrissey

Susie Olczak

Alexandra Searle

Lucy Soni

Peter Stiles

Madinah Farhannah Thompson

Matt Stokes

hestercombe.com/gallery

Facebook: @hestercombegallery Instagram: @HestercombeGallery



Supported and funded by  
ARTS COUNCIL  
ENGLAND

Somerset West  
and Taunton

Lucy Soni, Portal (Entangled Mass) 2021, Hand cut book pages, entomology pins (detail)





## Visual Arts

### 'GIFTED'

**Until 24 December**

ACE Arts, Market Place, SOMERTON, TA11 7NB. Tuesday - Saturday 10am - 5pm. 01458 273008 / acearts.co.uk. "Artisan Christmas exhibition showcasing contemporary craft from the best designer-makers based in the South West. Unique, handmade, locally designed and produced gift ideas."



### HELEN BRASHER

**Until 11 January**

Damers Corridor, First Floor, North Wing, Dorset County Hospital, DORCHESTER, DT1 2JY. 8am - 8pm. dchartsinhospital.org.uk. "Semi-abstract, tactile prints based on the colours and forms of the coastline."

### 'ALL WRAPPED UP'

**1 November - 24 December**

Sou'-Sou'-West Arts Gallery, Symonds Estate, BRIDPORT, DT6 6HG. 10.30am - 4.30pm. 01308 301326 / sousouwest.co.uk. "Festive exhibition of handmade gifts."



RICHARD JEFFEREY 'RAKU ROCKET'

## Boilerhouse Gallery Christmas Weekend

"Shop local with us for unique, affordable, handmade gifts. We'll have mince pies and mulled cider on the go. Plus live music to enhance your shopping experience beneath our twinkly fairy lights."

**27 and 28 November:** Boilerhouse Gallery, Sandy Hill Arts, Sandy Hill Lane, CORFE CASTLE, BH20 5JF. 10am - 5pm. 07398 052489 / boilerhousegallery.co.uk.

### 'THE GUESTS OF 2021 RETURN'

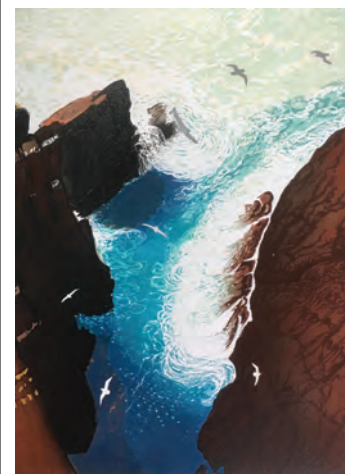
**1 November - 24 December**

The Creative Gallery, St John's Hill, WAREHAM, BH20 4NB. Monday - Saturday 10am - 5pm. 01929 551505 / creativegallerywareham.co.uk. "A showcase to celebrate the return of exhibitions. Wood, metal and clay in many forms, alongside the creations of our resident artists and makers."

### 'VERITABLE CORNUCOPIA OF ARTS AND CRAFTS'

**1 November - 31 December**

Studio 3 Gallery, Clevedon Craft Centre, Moor Lane, CLEVEDON, BS21 6TD. 10am - 4pm. 07557 331967 / studiothree.art.



### SOMERSET PRINTMAKERS

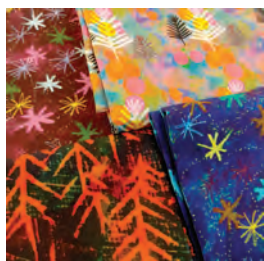
**6 November - 16 January**

The Whittox Gallery, Whittox Lane, FROME, BA11 3BY. Tuesday - Saturday 9am - 4pm. 07712 523734 / thewhittoxgallery.com. "Recent work by this group of wonderful printmakers."

### 'PRESENT MAKERS 2021'

**13 November - 24 December**

Thelma Hulbert Gallery, Dowell Street, HONITON, EX14 1LX. Thursday - Saturday 10am - 5pm. 01404 45006 / thelmahulbert.com. "Showcasing creative innovation across craft and design. The exhibited work in a range of materials includes glass, wood, paper, textiles, prints, ceramics and jewellery."



## CHRISTMAS AT YEOVIL ART SPACE 10 November - 23 December

FEATURING ORIGINALS, PRINTS, CARDS AND HAND-MADE GIFTS FROM MORE THAN 30 ARTISTS  
Plus workshops on making decorations, gifts, wreaths, memory boxes and more!



Unit 23, Vicarage Walk, Quedam Shopping Centre, Yeovil, Somerset BA20 1EU

Details and opening hours: yeovilartspace.uk/christmas • Facebook and Instagram: @yeovilartspace



# Wessex Winter Guide 2021

## CADARTS CHRISTMAS CRAFT SHOW

14 November

Hoburne Naish, Christchurch Road, NEW MILTON, BH25 7QT. 10am - 4pm. £2. 07999 846669 / cadarts.co.uk. "Exquisite locally made crafts for Christmas gifts."

## CADARTS CHRISTMAS BOUTIQUE

19 November - 9 December

The Hayloft, 14 Wick Lane, CHRISTCHURCH, BH23 1HX  
Time(s): 10am - 4pm. 07999 846669 / cadarts.co.uk. "A curated exhibition of unique high quality gifts created by local artisans. Paintings, woodcraft, ceramics, textiles, jewellery and more."



### 'BELIEVE'

20 November - 18 December

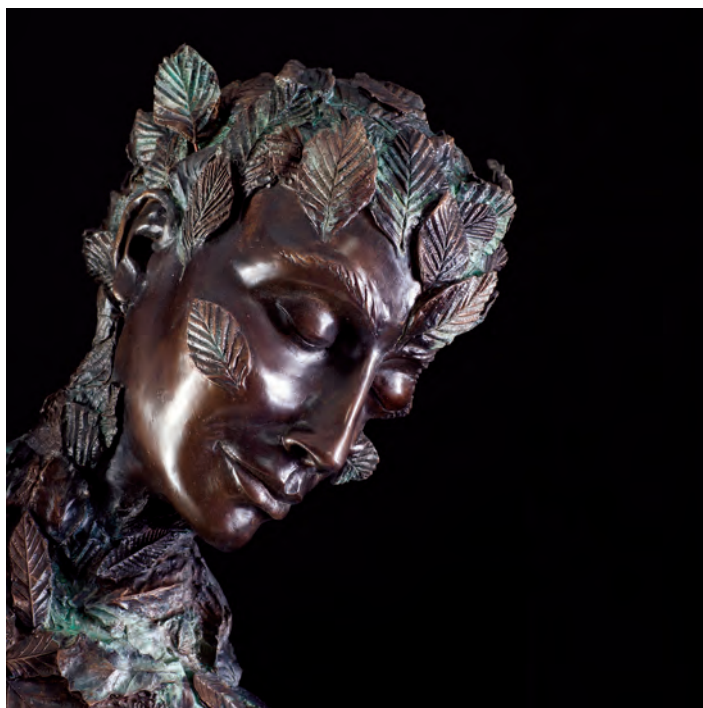
Hybrid Gallery, 51 High Street, HONITON, EX14 1PW. Tuesday - Saturday 10am - 5pm. 01404 43201 / hybrid-devon.co.uk. "Group exhibition by our gallery artists."

Above: Irene Jones 'Silver Star Light'

### 'HENRI MATISSE LITHOGRAPHS'

20 November - 24 December

Courthouse Gallery, Market Place, SOMERTON, TA11 7LX  
Wednesday - Saturday 10am - 5pm. 07535 520186 / courthousegallery.uk. "The new Courthouse Gallery is proud to present a selection of lithographs by the innovative modern artist Matisse."



BRENDAN MURLESS

## Simply Christmas

"Fisherton Mill's annual Christmas Exhibition includes something for everybody - paintings, illustrations, textiles, ceramics, sculpture, beautiful glass lamps and Christmas decorations, unique marquetry boxes, pictures and furniture, stunning jewellery and lots, lots more! If you're looking for that special Christmas present then look no further, the exhibition will be simply full of exciting and original gift ideas. Fisherton Mill is the largest independent arts complex in the south west and is always worth a visit but especially at Christmas, when all is looking bright and beautiful! The Gallery shop will be open as usual and full of lovely Christmassy gifts for all ages and budgets. A wonderful addition this year will be the Courtyard Makers Markets running for five Saturdays from 13 November until 11 December from 10am - 3pm. Each market day features six individual stalls offering original handcrafted fare and a range of quirky gifts. Take a look at Fisherton Mill's website for a list of makers and artists taking part in the Courtyard Makers Markets and further details about what is on offer. Also available on the market days will be mulled wine and delicious home-made mince pies to warm you up and help you on your festive way!"

**6 November - 24 December:** Fisherton Mill, 108 Fisherton Street, SALISBURY, SP2 7QY. Monday - Friday 10am - 5pm, Saturday 9.30am - 5.30pm. 01722 415121 / fishertonmill.co.uk.



## WINCANTON TOWN FESTIVAL OF LIGHTS

27 November

The Greening The Earth Gallery, 7 High Street, WINCANTON, BA9 9JN. 5 - 9pm. @wincantontownfestival. "An illuminating trail of light installations themed on sustainability, set in the gardens of the Greening The Earth Gallery. Featuring local artists including Zac Greening, Alice Mary, Patrick Bateman, with styling by Sara Kirkby, and food by the Bootmakers."

### 'WINTER WARMER'

29 November - 18 December

Heritage Courtyard Gallery & Studios, 6 Heritage Courtyard, WELLS, BA5 2RR. Tuesday - Saturday 10.30am - 4pm. heritagecourtyardstudio.com. "Showcasing a beautiful array of stunning work, including paintings, ceramics and jewellery."

### SHAFTESBURY GROUP ART FAIR

3 December

Shaftesbury Town Hall, High Street, SHAFTESBURY, SP7 8LY. 10am - 4pm. 01747 853822.

## WINCANTON TOWN FESTIVAL OF LIGHTS

4 December

The Greening The Earth Gallery, 7 High Street, WINCANTON, BA9 9JN. 5 - 9pm. @wincantontownfestival. See 27 November.

### BEAR FLAT ARTISTS CHRISTMAS ART FAIR & MARKET

4 December

Methodist Church Hall, Bruton Avenue, Bear Flat, BATH, BA2 4QJ. 10am - 5pm. bearflatartists.co.uk. "Buy art and gifts direct from makers, and find out about processes."

## The Christmas Art Sale 2021

27 November - 19 December Open Daily 10am - 4pm

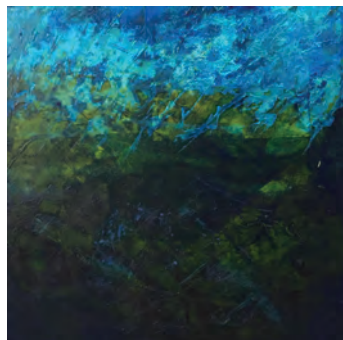
The Christmas Art Sale returns for its 7th year. The perfect opportunity to shop local, support small businesses and find truly unique Christmas gifts this year. Over 20 local artists exhibiting a vast selection of quality, affordable, varied and beautiful art work. Feel free to browse and enjoy our pop-up coffee bar selling locally ground coffee and delicious cake.

The Old Brick Workshop, Higher Poole, Wellington, Somerset, TA21 9HW  
[www.theoldbrickworkshop.com](http://www.theoldbrickworkshop.com)





# Wessex Winter Guide 2021



## 'DIFFRACTIONS: APERTURES TO THE UNCONSCIOUS' 4 and 5 December

Hours, 10 Colston Yard, BRISTOL, BS1 5BD. 12noon - 2.30pm. 07766 054659 / hours-space.com.

## SOU'-SOU'-WEST WINTER OPEN 4 December - 9 January

Sou'-Sou'-West Arts Gallery, Symonds Estate, BRIDPORT, DT6 6HG. 10.30am - 4.30pm. 01308 301326 / sousouwest.co.uk. "This year's annual Winter Open features smaller pieces of original work, in a variety of media."



## EELES FAMILY POTTERS 8 December - 5 January

The Gallery, Shaftesbury Arts Centre, Bell Street, SHAFTESBURY, SP7 8AR. Monday - Saturday 10am - 4pm. 01747 855243 / shaftesburyartscentre.org.uk. "Christmas exhibition of wood-fired stoneware, porcelain and Raku pieces."

## NEIL COLCLOUGH

8 December - 5 January  
The Gallery, Shaftesbury Arts Centre, Bell Street, SHAFTESBURY, SP7 8AR. Monday - Saturday 10am - 4pm. 01747 855243 / shaftesburyartscentre.org.uk. Paintings.



MILLIE GLEESON 'IN-A-SPACE-OUTTA-TIME'

## Winter Open

"Heart of The Tribe's first annual winter open exhibition will feature selected work from artists based in the South West and beyond, highlighting the endless talent that emerging and undiscovered artists have to offer. The exhibition will also present a selection of new works from the gallery's core artists."

**19 November - 9 January:** Heart of The Tribe Gallery, 74 High Street, GLASTONBURY, BA6 9DZ. 11am - 5pm. 01458 832167 / heartofthetribe.com.

## 'BIG SKIES, DISTANT VIEWS'

8 December - 16 January  
Rotunda Gallery, Lyme Regis Museum, Bridge Street, LYME REGIS, DT7 3QA. Tuesday - Saturday 10am - 5pm, Sunday 10am - 4pm. £5.95. 01297 443370. "Steve Manning works predominantly with lino, employing a combination of multi-block and reduction printing to produce spacious landscapes inspired by the landscapes of Devon and Dorset."

## WINCANTON TOWN FESTIVAL OF LIGHTS

11 December  
The Greening The Earth Gallery, 7 High Street, WINCANTON, BA9 9JN. 5 - 9pm. @wincantontownfestival. See 27 November.

## 'THE CELESTIAL SELF'

11 - 24 December  
ACE Arts, Market Place, SOMERTON, TA11 7NB. Tuesday - Saturday 10am - 5pm. 01458 273008 / acearts.co.uk. "A series of works by

Lydia Carter reflecting on aspects of gender, intimacy, and the natural sublime. Taking inspiration from mythology, they offer an insight into human limitation and the value of our own mortality."

## WINCANTON TOWN FESTIVAL OF LIGHTS

18 December  
The Greening The Earth Gallery, 7 High Street, WINCANTON, BA9 9JN. 5 - 9pm. @wincantontownfestival. See 27 November

# FISHERTON MILL SALISBURY



handmade GIFTS  
for KISSMASS



108 Fisherton Street, Salisbury, SP2 7QY

Monday - Friday 10am-5pm, Saturday 9.30am-5.30pm



WWW.FISHERTONMILL.CO.UK







## Music and Performance

### OPUS ANGLICANUM: 'MEDIEVAL CAROLS'

**8 December**

St Mary's Church, DORCHESTER, DT1 2LY. 8pm. £15 / £13. [dorchesterarts.org.uk](http://dorchesterarts.org.uk). "Join Opus Anglicanum on a Christmas journey 800 years back in time, visiting entrancing music and words from our mediaeval past. Readings performed by BBC Radio's Zeb Soanes illuminate the surrounding music."

### 'THE NATIVITY'

**8 December**

Dorchester Arts, The Corn Exchange, High East Street, DORCHESTER, DT1 1HF. 8pm. £14 / £12. 01305 266926 / [dorchesterarts.org.uk](http://dorchesterarts.org.uk). "With Living Spit's usual mix of silly songs, pitiful puppetry and more Biblical befuddlement than you can shake a figgy pudding at, Nativity promises to be a cornucopia of comic Christmassy crudeness that you'll never forget!"

### 'CHRISTMAS MEMORIES'

**9 December**

The Beehive, Dowell Street, HONITON, EX14 1LZ. 2pm. 01404 384050 / [beehivehoniton.co.uk](http://beehivehoniton.co.uk). "Start Christmas in style as Neil Sands and his wonderful West End cast deliver a spectacular spirit lifting, heartwarming, afternoon show of festive nostalgia."



## David Mynne: A Christmas Carol

"David Mynne, veteran Cornish actor and a founder member of Kneehigh Theatre, in a one-man performance of Charles Dickens' A Christmas Carol. Spend an evening with Ebenezer Scrooge: a squeezing, wrenching, grasping, clutching, covetous, old miser! Bah! In their inimitable style, the team that brought you *Great Expectations*, *Dracula* and *The Odyssey* will now take you on a grim (sort of) journey through the dark, dismal streets of Victorian London. Dickens' original words with added silliness. Silliness? Bah! Celebrate the festive season with a mesmerising one-man performance of Charles Dickens' timeless, transformative story: A Christmas Carol. Bah! Now with extra Humbug!"

**10 December:** Village Hall, SYDLING ST NICHOLAS, DT2 9NX. 7.30pm. £10 / £6. 01300 341777 / [artsreach.co.uk](http://artsreach.co.uk).

**11 December:** Village Hall, BRIANTSPUDDLE, DT2 7HT. 7.30pm. £10 / £6. 07788 100273 / [artsreach.co.uk](http://artsreach.co.uk).

**2 December:** Memorial Hall, MOTCOMBE, SP7 9NT. 7.30pm. £9 / £6. 07904 904668 / [artsreach.co.uk](http://artsreach.co.uk).

### THE RIDGEWAY SINGERS & BAND' 'WEST GALLERY CAROLS'

**11 December**

Village Hall, STALBRIDGE, DT10 2NF. 4pm. £8 / £5. 01963 362355 / [artsreach.co.uk](http://artsreach.co.uk). "With their roots in the South Dorset Ridgeway and inspired by the rich sources of locally collected folk songs and West Gallery carols, the Ridgeway Singers and Band led by Tim Laycock and Phil Humphries have once again tuned their fiddles and voices to present a joyous celebration of Christmas past and present."

### THE RIDGEWAY SINGERS & BAND' 'WEST GALLERY CAROLS'

**12 December**

Village Hall, ALDERHOLT, SP6 3RB. 3.30pm. £8 / £5. 07436 000097 / [artsreach.co.uk](http://artsreach.co.uk). See 11 December.



### MINIMA: 'NOSFERATU'

**12 December**

Village Hall, STUDLAND, BH19 3BT. 7.30pm. £10 / £6. 01929 450587 / [artsreach.co.uk](http://artsreach.co.uk). "Nosferatu is one of the silent era's masterpieces. Its eerie, Gothic feel, and chilling performance from Max Shrek as the vampire, set the template for many horror films that followed. Darkly humorous and tender too, this is a story of yearning and the search for fulfilment. This screening of the original 1922 film will feature a new music score performed live by acclaimed soundscapers Minima, a Bristol based quartet who use instrumentation including cello, double bass, baritone guitar, acoustic and electric guitars, mandolin, autoharp, dulcimer, synthesizer, glockenspiel and drum kit to create a unique live experience."



"The Guests of 2021 Return"  
1st November - 24th December



Happy Christmas  
from all our  
Artists/Makers

St John's Hill, Wareham, Dorset BH20 4NB t 01929 551505 e [fiona@creativegallerywareham.co.uk](mailto:fiona@creativegallerywareham.co.uk)  
Open: Monday to Saturday 10am-5pm until 3pm on 24th December





## Beauty and The Beast

"The stage is set this Christmas for the first Lighthouse panto produced entirely in-house, featuring an amazing cast headed Chris Jarvis and Michelle Collins."

**9 - 31 December:** Lighthouse, 21 Kingland Road, POOLE, BH15 1UG. 01202 280000 / [lighthousepoole.co.uk](http://lighthousepoole.co.uk).

### 'SNOW ANGEL CABARET'

**17 December**

The Beehive, Dowell Street, HONITON, EX14 1LZ. 8pm. 01404 384050 / [beehivehoniton.co.uk](http://beehivehoniton.co.uk). "Charlie Bicknell and Louise Innes combine a gloriously dark sense of humour with amazing voices."

### 'FIVE STAR SWING AT CHRISTMAS'

**17 December**

Dorchester Arts, The Corn Exchange, High East Street, DORCHESTER, DT1 1HF. 8pm. £16 / £14. [dorchesterarts.org.uk](http://dorchesterarts.org.uk). "Swing into Christmas!"

### 'MORGAN & WEST'S GREAT BIG CHRISTMAS MAGIC SHOW!'

**18 December**

Dorchester Arts, The Corn Exchange, High East Street, DORCHESTER, DT1 1HF. 2.30 and 7pm. £11 / £9. [dorchesterarts.org.uk](http://dorchesterarts.org.uk). "Time-travelling magicians Morgan & West crash into Christmas with a show full of fabulous family fun, festive frolics and fantastic facial furniture. Magic, mystery, and merriment await in this utterly splendid (and totally silly) Christmas magic extravaganza!"



## Boilerhouse Gallery

Open Tuesday to Saturday 11am - 4pm

**CHRISTMAS EVENT WEEKEND 27 and 28 November**

Sandy Hill Lane, Corfe Castle BH20 4JF  
07398 052489 • [boilerhousegallery.co.uk](http://boilerhousegallery.co.uk)



## GIFTED

Until 24 December

Artisan Christmas exhibition showcasing contemporary craft from the best designer-makers based in the South West  
Unique, handmade, locally designed and produced gift ideas



MARKET PLACE, SOMERTON, SOMERSET TA11 7NB

Tuesday - Saturday 10am - 5pm

01458 273008 • [acearts.co.uk](http://acearts.co.uk)





# THE ART OF BRIAN RICE

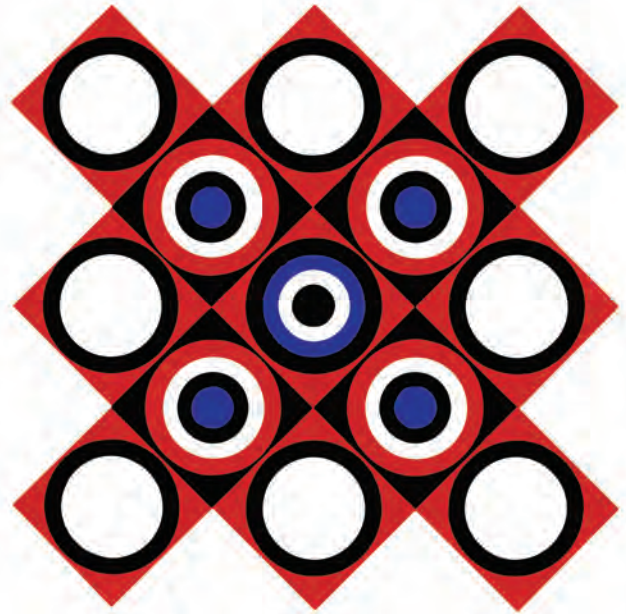
Now  
Open Sundays

Sixty Years of  
Paintings and Prints

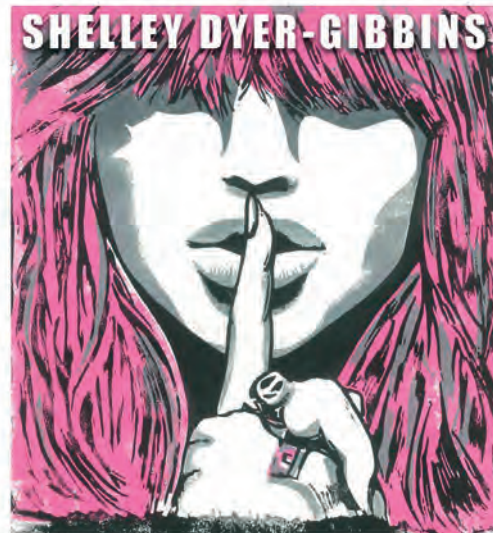
13 NOVEMBER 2021 - 26 FEBRUARY 2022

**Exhibition open Tuesday - Sunday  
10.00 am - 5.00 pm**

Booking advised  
[museumofsomerset.org.uk](http://museumofsomerset.org.uk)  
Taunton Castle TA1 4AA



**COOL CUTS** OCT 21ST-  
NOV 15TH



**RETRO-TONED PIECES PRIMARILY FEATURING  
LINOCUT PRINTMAKING. HER AWARD WINNING  
WORK PLAYS WITH TRADITIONAL PRINTMAKING  
METHODS BUT ALSO EXPERIMENT WITH THEIR  
EXECUTION GIVING THEM AN EXCITING EDGE.**



**WINTER OPEN  
EXHIBITION 2021**

**NOVEMBER 19TH - JANUARY**

CELEBRATING THE WEALTH OF CREATIVE  
TALENT ON OFFER IN THE SOUTH WEST BY  
SHOWCASING A WIDE SELECTION OF WORK BY  
BOTH CORE AND DIRECTORY ARTISTS.

01458 832167

[Gallery@HeartofTheTribe.com](mailto:Gallery@HeartofTheTribe.com)

[www.HeartofTheTribe.com](http://www.HeartofTheTribe.com)

[f](https://www.facebook.com/HeartofTheTribeGallery) [i](https://www.instagram.com/HeartofTheTribeGallery) [@HeartofTheTribeGallery](https://www.tiktok.com/@HeartofTheTribeGallery)

74 High Street, Glastonbury, BA6 9DZ

TEA & COFFEE  
EXHIBITIONS  
TALKS & WORKSHOPS  
SOMERSET ARTISTS  
EVENT SPACE FOR HIRE



HEART OF  
THE TRIBE  
GALLERY & GARDEN



## Visual Arts

paintings, this exhibition combines Scandinavian minimalism with her signature style of earthy tones and organic, whimsical shapes."

### DAN CROFT

**1 - 7 December**

The Gallery, Shaftesbury Arts Centre, Bell Street, SHAFTESBURY, SP7 8AR. Monday - Saturday 10am - 4pm. 01747 855243 / shaftesburyartscentre.org.uk.

### PHOENIX GROUP OF PHOTOGRAPHERS

**1 - 8 December**

Taunton Library, Paul Street, TAUNTON, TA1 3XZ. Monday, Tuesday, Thursday - Friday 9.30am - 5.30pm, Wednesday 9.30am - 7pm, Saturday 9.30am - 5pm, Sunday 9.30am - 5.30pm. 01823 336334 / 0300 1232224 / tauntonlibrary.org.

### 'CAUTION: ARTIST AT WORK!'

**4 December - 31 December**

Chippenham Museum, 9 - 10 Market Place, CHIPPENHAM, SN15 3HF. Monday - Saturday 10am - 4pm. 01249 705020 / chippenham.gov.uk/chippenham-museum. "Sketches, models and maquettes, revealing what goes into making a work of art."



### RAY BALKWILL: 'THE RIVER'S VOICE'

**7 December - 26 June**

The Cafe, RAMM, Queen Street, EXETER, EX4 3RX. Tuesday - Sunday 10am - 5pm. 01392 265858.

"The Exe Estuary has been the mainspring for this celebratory exhibition featuring recent work, including boxed assemblages from material washed up on the foreshore."



'SON OF COVID' (2020)

## The Art of Brian Rice: Sixty Years of Paintings and Prints

"The Museum of Somerset continues its successful series of events celebrating 20th-century art with a new exhibition displaying more than 30 vibrant abstract works by the painter-printmaker who was born in Somerset but made an international name for himself in 1960s London. The exhibition will display works from throughout Brian Rice's career. They range from his early days at Yeovil School of Art and Goldsmiths College, to his time as part of the booming London art scene, moving in the same circles as David Hockney, Peter Blake and Derek Boshier."

**13 November - 26 February:** Museum of Somerset, Castle Lodge, Castle Green, TAUNTON, TA1 4AA. Tuesday - Sunday 10am - 5pm. 01823 255088 / museumofsomerset.org.uk / swheritage.org.uk.

Calling all Dorset artists, designers, makers, filmmakers and galleries

Become a member of **DORSET VISUAL ARTS** or renew your membership at **dorsetvisualarts.org**

Full details of our membership options and benefits can be found on the website



Calling all Dorset artists, designers, makers, filmmakers and galleries

Sign up for **DORSET ART WEEKS 2022** from 1 November at **dorsetartweeks.co.uk**

Applications close 1 January 2022



# Music

November and December 2021



## Trio Klein

"Trio Klein was formed by three award-winning and critically acclaimed musicians. Violinist Kamila Bydlowska, violist Shiry Rashkovsky and cellist Ella Rundle bring with them a wealth of musical and artistic experience including numerous international festival engagements such as Prussia Cove Open Chamber Music, disc recordings for NMC and Toccata Classics, and broadcasts for BBC Radio 3, BBC Radio 4, and New York's WQXR. Trio Klein's music programme will include string trios by the early 20th century Finnish composer Sibelius, and the contemporary Polish composer Penderecki. Music by JS Bach, Richard Strauss and the Holocaust victim Gideon Klein, after whom the Trio takes its name, completes the highly varied and innovative presentation."

**19 November:** Bridport Arts Centre, South Street, BRIDPORT, DT6 3NR. 11.10am. £12. 01308 424901 / [bridport-arts.com](http://bridport-arts.com).

**19 November:** SS Peter & Paul Church, UPLYME, Lyme Regis, DT7 3DT. 6.45pm. £15. 01823 252658 / [concertsinthewest.org](http://concertsinthewest.org).

**20 November:** The Dance House, Gouldsbrook View, North Street, CREWKERNE, TA18 7AL. 6.45pm. £15. 01460 75928 / [concertsinthewest.org](http://concertsinthewest.org).

**21 November:** St Laurence Church, Church Street, UPWEY, near Weymouth, DT3 5QE. 3pm. £15. 01305 812019 / [concertsinthewest.org](http://concertsinthewest.org).



## RIYAD NICOLAS

**5 November**

Bridport Arts Centre, South Street, BRIDPORT, DT6 3NR. 11.10am. £12. 01308 424901 / [bridport-arts.com](http://bridport-arts.com).  
*"Born in Aleppo, Syria, in 1989, Riyad Nicolas gave his first appearance with an orchestra there at the age of ten. He first came to Britain in 2005 on a scholarship to study at the Purcell School of Music and later, the Royal Academy of Music and the Royal College of Music. Through music Riyad has been promoting peace and raising awareness for the plights of the Syrian people."*

## RIYAD NICOLAS

**5 November**

Ilminster Arts Centre, East Street, ILMINSTER, TA19 0AN. 8pm. £15. 01460 54973 / [concertsinthewest.org](http://concertsinthewest.org). See above.



## THE LITTLE UNSAID

**5 November**

Bridport Arts Centre, 9 South Street, BRIDPORT, DT6 3NR. 7.30pm. £12. 01308 424204 / [bridport-arts.com](http://bridport-arts.com).

## Concerts IN THE West

CHAMBER MUSIC MINI-TOURS IN  
DEVON, DORSET AND SOMERSET  
BRIDPORT - CREWKERNE - ILMINSTER - LYME REGIS  
MINEHEAD - TAUNTON - UPWEY NR WEYMOUTH

**3 FEBRUARY TO 6 NOVEMBER 2022**

• 3, 4, 5, 6 FEBRUARY **SOLEM QUARTET**

• 4, 5 MARCH **ALASDAIR BEATSON & EUSEBIUS QUARTET**

[concertsinthewest@gmail.com](mailto:concertsinthewest@gmail.com) - CATHERINE MADDOCKS DIRECTOR  
01823 252658

[www.concertsinthewest.org](http://www.concertsinthewest.org)



• 31 MCH, 1-3 APRIL

**PELLÉAS ENSEMBLE**

• 6, 7 MAY

**ELOISA-FLEUR THOM,  
STEPHEN UPSHAW  
& SAM ARMSTRONG**

• 17, 18 JUNE

**TIM HORTON PIANO**

• 15, 16 JULY

**CALLUM SMART & RICHARD UTTLEY**

• 2, 3 SEPTEMBER

**FENELLA HUMPHREYS,  
CARA BERRIDGE  
& DANIEL GRIMWOOD**

• 6, 7, 8, 9 OCTOBER

**JUBILEE QUARTET**

• 3, 4, 5, 6 NOVEMBER

**NAOMI BURRELL, GAVIN KIBBLE  
& DAVID GERRARD**



## RIYAD NICOLAS

**6 November**

The Dance House, Gouldsbrook View, North Street, CREWKERNE, TA18 7AL. 6.45pm. £15. 01460 75928 / concertsinthewest.org. See 5 November.

## SIRIUS CHAU AND HUGO LAU

**7 November**

Weymouth Bay Church, Melcombe Avenue, WEYMOUTH, DT4 7TH. 3pm. £15. weymouthmusic.org.uk. "Flute and clarinet recital."

## NINEBARROW

**7 November**

St Mary's Church, DORCHESTER, DT1 2LY. 8pm. £18 / £16. dorchesterarts.org.uk.

## THE CHESTERFIELDS + MIGHTY ONE

**12 November**

North Down Farm, near HASELBURY PLUCKNETT, TA18 7PL. 6pm. Free entry. 07776 238608.

## JOHN ETHERIDGE & CHRIS GARRICK

**12 November**

Village Hall, BROADMAYNE, DT2 8EW. 7.30pm. £10 / £6. 07443 659912 / artsreach.co.uk.

## JOHN ETHERIDGE & CHRIS GARRICK

**13 November**

Pamela Hambro Hall, WINTERBORNE STICKLAND, DT11 0NT. 7.30pm. £12 / £6. 01258 880920.

## WISHBONE ASH

**13 November**

The Beehive, Dowell Street, HONITON, EX14 1LZ. 7.30pm. 01404 384050 / beehivehoniton.co.uk.

"With main man Andy Powell still at the helm they are undoubtedly one of the most celebrated bands in the history of rock."

## JOHN ETHERIDGE & CHRIS GARRICK

**14 November**

Village Hall, DRIMPTON, DT8 3RF. 7.30pm. £10 / £6. 01308 867617 / artsreach.co.uk.

## ROWAN RHEINGANS

**14 November**

Bridport Arts Centre, 9 South Street, BRIDPORT, DT6 3NR. 7.30pm. £12. 01308 424204 / bridport-arts.com.



## The Monochrome Set

"Featuring original Monochrome Set members Bid (guitar and vocals) and Andy Warren (bass) with Mike Urban, who was previously in the band in the early '90s, on drums, The Monochrome Set formed in 1978, and were heavily influential in the 'post-punk' scene that evolved after the initial scorched earth of punk. After a hiatus of over a decade the band reformed full time in 2010 and have since toured all over the UK, Europe, Japan and the USA, whilst also releasing six new, critically acclaimed, studio albums. Now in their 43rd year, they are beginning a new series of gigs promoting their latest album and playing songs old and new."

## THE MONOCHROME SET + DAVEY WOODWARD & THE WINTER ORPHANS + THE TWELVE HOUR FOUNDATION

**20 November:** The Thunderbolt, 124 Bath Road, BRISTOL, BS4 3ED. 7.30pm. £14 / £12. 01173 738947.



## JOHN LAW

**19 and 20 November**

Tincleton Gallery, The Old School House, TINCLETON, near Dorchester, DT2 8QR. 7.30pm. £15. tinctontongallery.com. "One of the UK's most imaginative and versatile jazz pianists."

## LA VIE EN ROSE

**20 November**

Village Hall, Trivetts Way, COSSINGTON, TA7 8JN. 8pm. £12.50. 01278 451187. "Exuberant gypsy style jazz with a swing and much joie-de-vivre."

## BSO: 'MUSIC OF REFLECTION'

**26 November**

Village Hall, LYTCHETT MATRAVERS, BH16 6DD. 7.30pm. £10 / £5. 07795 467666 / artsreach.co.uk.

## SUNSPLASH

**26 November**

Bridport Arts Centre, 9 South Street, BRIDPORT, DT6 3NR. 8pm. £12. bridport-arts.com. Jazz.



## KATHRYN ROBERTS & SEAN LAKEMAN

**26 November**

Village Hall, SANDFORD ORCAS, DT9 4RX. 7.30pm. £10 / £6. 01963 220208 / artsreach.co.uk.

## KATHRYN ROBERTS & SEAN LAKEMAN

**27 November**

Village Hall, STUDLAND, BH19 3BT. 7.30pm. £10 / £6. 01929 450587.

apple box music events present

# THE CHESTERFIELDS

**FREE GIG! FRIDAY 12 NOVEMBER with SPECIAL GUESTS MIGHTY ONE + DJ ALAN FLINT**  
 North Down Farm, Somerset TA18 7PL, food and drink from 6pm, music from 7.30pm





## Police Dog Hogan

"An eclectic seven-piece - fiddle, trumpet, mandolin, drums and guitars with four-part harmonies in a fusing of country, pop, folk, and urban bluegrass. Guardian columnist Tim Dowling on banjo."

**12 November:** The Beehive, Dowell Street, Honiton, EX14 1LZ. 8pm. 01404 384050 / beehivehoniton.co.uk.

### BRIDPORT CHAMBER ORCHESTRA

**28 November**

St Swithun's Church, NORTH ALLINGTON, Bridport, DT6 5DU. 3pm. £10. 01935 824786 / bridportchamberorchestra.co.uk. "A lovely programme including Elgar's Serenade for Strings, Holst's St Paul's Suite, and A Suite for Timothy by Pamela Harrison."

### KATHRYN ROBERTS & SEAN LAKEMAN

**28 November**

The Corn Exchange, BLANDFORD, DT11 7AG. 7.30pm. £10 / £6. 01258 480698 / artsreach.co.uk.

### BSO: 'MUSIC OF REFLECTION'

**2 December**

The Exchange, STURMINSTER NEWTON, DT10 1FH. 7.30pm. £10 / £5. 01258 475137 / artsreach.co.uk.

### MOSCOW DRUG CLUB

**4 December**

Dorchester Arts, The Corn Exchange, High East Street, DORCHESTER, DT1 1HF. 8pm. £15 / £13. 01305 266926 / dorchesterarts.org.uk. "Think 1930s Berlin Cabaret, Hot Club de France, Nuevo Tango & Gypsy Campfire, and where Django Reinhardt and Tom Waits are having an after-hours jam with the local Tziganes. Combining their original material with songs by the likes of Jacques Brel, Leonard Cohen & Bertolt Brecht, they provide an intimate musical experience."

### MARTIN CARTHY

**4 December**

Bridport Arts Centre, 9 South Street, BRIDPORT, DT6 3NR. 7.30pm. £15 / £13.50. bridport-arts.com.



### AMADOU DIAGNE & CORY SEZNEC: TOUKI: 'RIGHTS OF PASSAGE'

**9 December**

Village Hall, LANGTON MATRAVERS, BH19 3HA. 7.30pm. £10 / £6. 01929 423834. "Drawing heavily on the traditional music and rhythms of West Africa, the kora dances playfully around banjo and the guitar, the calabash and other percussion add powerful, driving beats, and silky voices entrance."

### AMADOU DIAGNE & CORY SEZNEC: TOUKI: 'RIGHTS OF PASSAGE'

**10 December**

Pamela Hambro Hall, WINTERBORNE STICKLAND, DT11 ONT. 7.30pm. £12 / £6. 01258 880920 / artsreach.co.uk. See 9 December.



### MAD DOG MCREA

**10 December**

Dorchester Arts, The Corn Exchange, High East Street, DORCHESTER, DT1 1HF. 8pm. £16.50 / £13.50. dorchesterarts.org.uk.

### KATHARINE LAM AND DUNCAN HONEYBOURNE

**10 and 11 December**

Tincleton Gallery, The Old School House, TINCLETON, near Dorchester, DT2 8QR. 7.30pm. £15. 01305 848909 / tincletongallery.com. "Relishing the opportunity, which this intimate and unique venue affords, to play both of Tincleton's characterful pianos, Katharine and Duncan will explore a range of familiar and less known works for piano solo, two pianos and four hands."

### AMADOU DIAGNE & CORY SEZNEC: TOUKI: 'RIGHTS OF PASSAGE'

**11 December**

Village Hall, PORTESHAM, DT3 4NS. 7.30pm. £10 / £6. 01305 871035 / artsreach.co.uk. See 9 December.

### MAD DOG MCREA + SKIMMITY HITCHERS

**17 December**

Bridgwater Town Hall, High Street, BRIDGWATER, TA6 3BL. 7pm. £20 / £18. fuelledbycider.com.

### OLD MALTHOUSE BAND

**17 December**

Bridport Arts Centre, 9 South Street, BRIDPORT, DT6 3NR. 8pm. £12. bridport-arts.com. Jazz.



We are a funky, independent record shop stocking a great range of new and preloved vinyl, specialising in Reggae, Hip Hop, Soul, Funk, World, Electronic, Jazz, Blues, Alternative, Indie, Rock, Pop and more

**8a Pope Street, Brewery Square, Dorchester, DT1 1GW**  
Tuesday to Saturday from 10am




**CLOCKTOWER MUSIC**, Bridport's vinyl record shop welcomes our satellite shop **CLOCKTOWER TOO**  
Clocktower Too specialises in all styles of music on CD, plus a selection of music memorabilia and vinyl records

**35a South Street, Bridport, Dorset DT6 3NY**  
Open Monday, Wednesday, Friday and Saturday, 9.30am - 3.30pm

## FRAMING BUSINESS FOR SALE

Comprehensive range of equipment, furniture, tools, stock, goodwill, and training

Excellent small business with potential

Lyme Regis area but would easily relocate

Details 01297 442902



# Performance

November and December 2021

## 'HAPPY DAYS ARE HERE AGAIN'

4 November

The Beehive, Dowell Street,  
HONITON, EX14 1LZ. 2pm. 01404  
384050 / beehivehoniton.co.uk.  
"Nostalgic merriment and song."

## 'DEARLY BELOVED'

4 November

Bridport Arts Centre, 9 South Street,  
BRIDPORT, DT6 3NR. 8pm. £17 / £15.  
01308 424204 / bridport-arts.com.



## 'THE MIDNIGHT BELL'

4 - 6 November

Lighthouse, 21 Kingland Road,  
POOLE, BH15 1UG. 7.45pm  
(Saturday matinee 2.30pm). 01202  
280000 / lighthousepoole.co.uk.  
"This show explores the underbelly  
of 1930s London life where ordinary  
people emerge from cheap  
boarding houses nightly to pour  
out their passions, hopes and  
dreams in the pubs and bars of  
fog-bound Soho and Fitzrovia."



## 'ALL IS MENDED'

8 November

The Beehive, Dowell Street,  
HONITON, EX14 1LZ. 2pm. 01404  
384050. "A poignant and witty tale  
of love and life in a care home."



## Hannah Maxwell: I, AmDram

"Amateur dramatics. The hidden history of many a performance artist. From four generations of leading ladies comes one queer Londoner, sharing a story of return and reconciliation with her hometown, cultural inheritance and secret love of musical theatre. In this affectionate tribute Hannah Maxwell makes a prodigal's return to the musty vibrancy of amateur dramatics – her family's consuming passion for 89 years and four generations. Weaving storytelling, stand-up and a manageable amount of musical theatre references."

**10 November:** Memorial Hall, PIDDLTRENTHIDE, DT2 7QF. 7.30pm. £10 / £6. 07786 880676 / artsreach.co.uk.

**11 November:** Village Hall, BROADOAK, DT6 5NL. 7.30pm. £10 / £5. 01308 424922 / artsreach.co.uk.

## LUNG: 'WHO CARES'

12 November

Bridport Arts Centre, 9 South Street,  
BRIDPORT, DT6 3NR. 7.30pm. £12.  
01308 424204. "Award-winning  
Lung examine the impact of  
austerity, our failing social care  
system and what happens when a  
child becomes the parent."

## SONIA SABRI COMPANY: 'SAME SAME... BUT DIFFERENT'

14 November

The Exchange, STURMINSTER  
NEWTON, DT10 1FH. 3pm. £6 / £5.  
01258 475137 / artsreach.co.uk. "Fun  
and magical dance show."

## 'KING LEAR'

18 November

Lighthouse, 21 Kingland Road,  
POOLE, BH15 1UG. 8pm. 0161 912  
5616 / lighthousepoole.co.uk. "This  
one man King Lear is something of  
a miniature masterpiece. A  
brilliantly entertaining, and  
frequently astonishing evening."



# SHERBORNE TIMES

A MONTHLY CELEBRATION OF PEOPLE, PLACE AND PURVEYOR

## OUT NOW AND ONLINE

sherbornetimes.co.uk





## Joshua Nash: Blacklist / Fig Leaf

"A double bill of shows from one of the UK's leading Krump dancers. *Blacklist* is an explosive piece asking how do we cope with inner conflict? Delving into brotherhood, isolation and friendship explored through hip-hop, krump and theatre. *Fig Leaf* asks what does it mean to be a man? And when does masculinity become toxic? Swinging from love and support, to anger and aggression. The dancers fight the urge to compete with one another and instead attempt to create a support network, brotherhood and community bond."

**10 November:** Bay Theatre, WEYMOUTH, DT4 7LQ. 7.30pm. £9 / £7. 01305 208702 / artsreach.co.uk.

### 'GANGA - TALES OF THE RIVER'

**19 November**

Village Hall, WOOTTON FITZPAINE, DT6 6NF. 7.45pm. £10 / £5. 01297 560948 / artsreach.co.uk.

"Storyteller Emily Hennessey and acclaimed sitar player Sheema Mukherjee fuse live storytelling and music."

### 'THE PRINCESS AND THE PEA'

**20 November**

Village Hall, ALDERHOLT, SP6 3RB. 3pm. £6 / £5. 07436 000097 / artsreach.co.uk.

### 'GANGA - TALES OF THE RIVER'

**20 November**

The Hut, POWERSTOCK, DT6 3TB. 7.30pm. £10 / £5. 01308 485730 / artsreach.co.uk. See 19 November.



### 'THE PRINCESS AND THE PEA'

**21 November**

Village Hall, CERNE ABBAS, DT2 7GY. 3pm. £6 / £5. 07823 778758.

### 'GANGA - TALES OF THE RIVER'

**21 November**

The Portman Hall, SHILLINGSTONE, DT11 0SF. 7.30pm. £9 / £5. 01258 860319 / artsreach.co.uk. See 3 December.



### KUUMBA NIA ARTS: 'SOLD'

**26 November**

Village Hall, HALSTOCK, BA22 9SG. 8pm. £9 / £5. 01935 891744 / artsreach.co.uk. "Through theatre, song, music, drumming and dance, this masterpiece of Black British theatre is inspired by the storytelling traditions of the West African griot."

### 'SHYLOCK'

**26 November**

The Beehive, Dowell Street, HONITON, EX14 1LZ. 7.30pm. 01404 384050. "Explore the tragic, funny and often unbelievable life of fiction's most famous Jew in this acclaimed theatre production."

### 'SCOTTISH FALSETTO SOCK PUPPET THEATRE DO SHAKESPEARE'

**27 November**

Bridport Arts Centre, 9 South Street, BRIDPORT, DT6 3NR. 7.30pm. £10. 01308 424204 / bridport-arts.com.

### KUUMBA NIA ARTS: 'SOLD'

**27 November**

Memorial Hall, STURMINSTER MARSHALL, BH21 4BQ. 8pm. £10 / £5. 07903 057427. See 26 November.



### BOWJANGLES: 'DRACULA IN SPACE'

**3 December**

Village Hall, CHETNOLE, DT9 6NU. 7.30pm. £10. 07966 177789.

"Bowjangles are a string quartet who can really play, they dance whilst they play, they sing whilst they play, they leap, tumble, juggle and joke whilst they play!"

### BOWJANGLES: 'DRACULA IN SPACE'

**4 December**

Village Hall, SIXPENNY HANDLEY, SP5 5NJ. 7.30pm. £10 / £6. 01725 552812 / artsreach.co.uk. See 3 December.

### BOWJANGLES: 'DRACULA IN SPACE'

**5 December**

Village Hall, WINFRITH, DT2 8JR. 8pm. £12.50 / £10. 01305 853783 / artsreach.co.uk. See 3 December.

4 COLOURS  
to make a  
THOUSAND  
SHADES

#COLOURINGYOURFUTURE

**S&G**  
STEPHENS & GEORGE  
PRINT GROUP

WWW.STEPHENSANDGEORGE.CO.UK  
01685 388888 | SALES@STEPHENSANDGEORGE.CO.UK

GOAT MILL ROAD | DOWLAIS | MERTHYR TYDFIL | CF48 3TD

FOLLOW US ON TWITTER @SandGPrintGroup



GALLERY  
AT THE  
STATION

# Marian Bruce In Movement 2018-2021



Maquette for a life-sized figure, 'Liberation' - A work in progress 2021. Photo © Mark Bruce

**3-27 November**

Drawing and sculpture directly inspired by Marian's collaboration with Acosta Danza in Havana Cuba in 2018.

**Opening hours**

Wednesday, Thursday  
and Sunday 10-4pm  
Friday and Saturday 10-9pm

Artist on site working on  
'Liberation' Saturdays 11-3pm

info@galleryatthestation.com  
Gallery At The Station, Station  
Approach, Frome, BA11 1RE

Wheelchair accessible.  
Social distancing is advised.

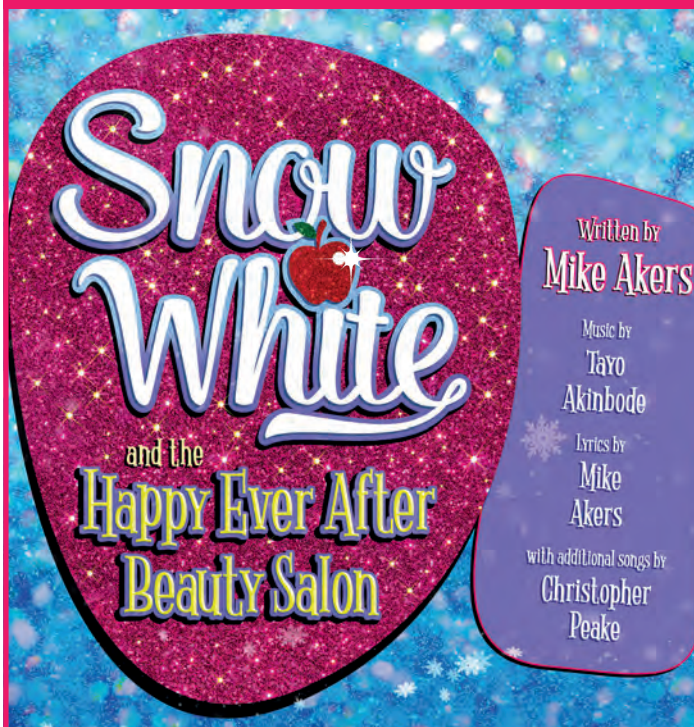
Visual artist and theatre designer, Marian Bruce, presents selected images initiated over a period of her five week stay in Havana, Cuba while designing Christopher Bruce's dance production, *Rooster*. This small body of work, 'In Movement', conveys the passion and vigour of the performers through a variety of mark-making and rudimentary sculptural practices. The exhibition also includes Matt Hayden's photographs taken in the rehearsal studio in Havana.

Marian would like to thank Carlos Acosta for the invitation which allowed her the privilege to intimately observe this most extraordinary group of Cuban dancers.

[www.marianbruce.co.uk](http://www.marianbruce.co.uk)

@galleryatthestation

**BOOK NOW FOR THE DELICIOUSLY  
MAGICAL FAMILY TREAT AT  
SALISBURY PLAYHOUSE THIS CHRISTMAS**



**3 - 31 DECEMBER 2021**

To book, visit [wiltshirecreative.co.uk](http://wiltshirecreative.co.uk), pop  
in to Salisbury Arts Centre (Tue - Sat) or call  
**01722 320 333** (Tue - Sat, 10am - 2pm)

**SALISBURY  
PLAYHOUSE**  
PART OF WILTSHIRE CREATIVE

A Wiltshire Creative production in the  
Main House at Salisbury Playhouse



ARTS COUNCIL  
ENGLAND

Wiltshire Council

SALISBURY  
CITY COUNCIL

BRIDPORT  
ARTSCENTRE

NO 5.16TH NOV



16TH OCT - 13TH NOV\*  
**KEITH ROGERS: BEYOND THE GOLDEN REEDS**

**GIFTED**

Designer Makers Winter Exhibition

The Arts Centre will be hosting Gifted, a Christmas  
selling exhibition in the beautiful Allsop Gallery. This  
exhibition will showcase contemporary craft and  
design from South West Artists and Designer Makers.

24TH NOV - 22ND DEC  
**GIFTED: DESIGNER MAKERS WINTER EXHIBITION**

Visit us online at [www.bridport-arts.com](http://www.bridport-arts.com) or call **01308 424901**.

\*The Gallery is open Tuesdays - Saturdays, 10am to 4pm. FREE ENTRY.

Subscribe to  
**EVOLVER** MAGAZINE  
online at  
**evolver.org.uk**

Six bi-monthly issues for £25



**We deliver any marketing material**

Call Will on 07397 853006

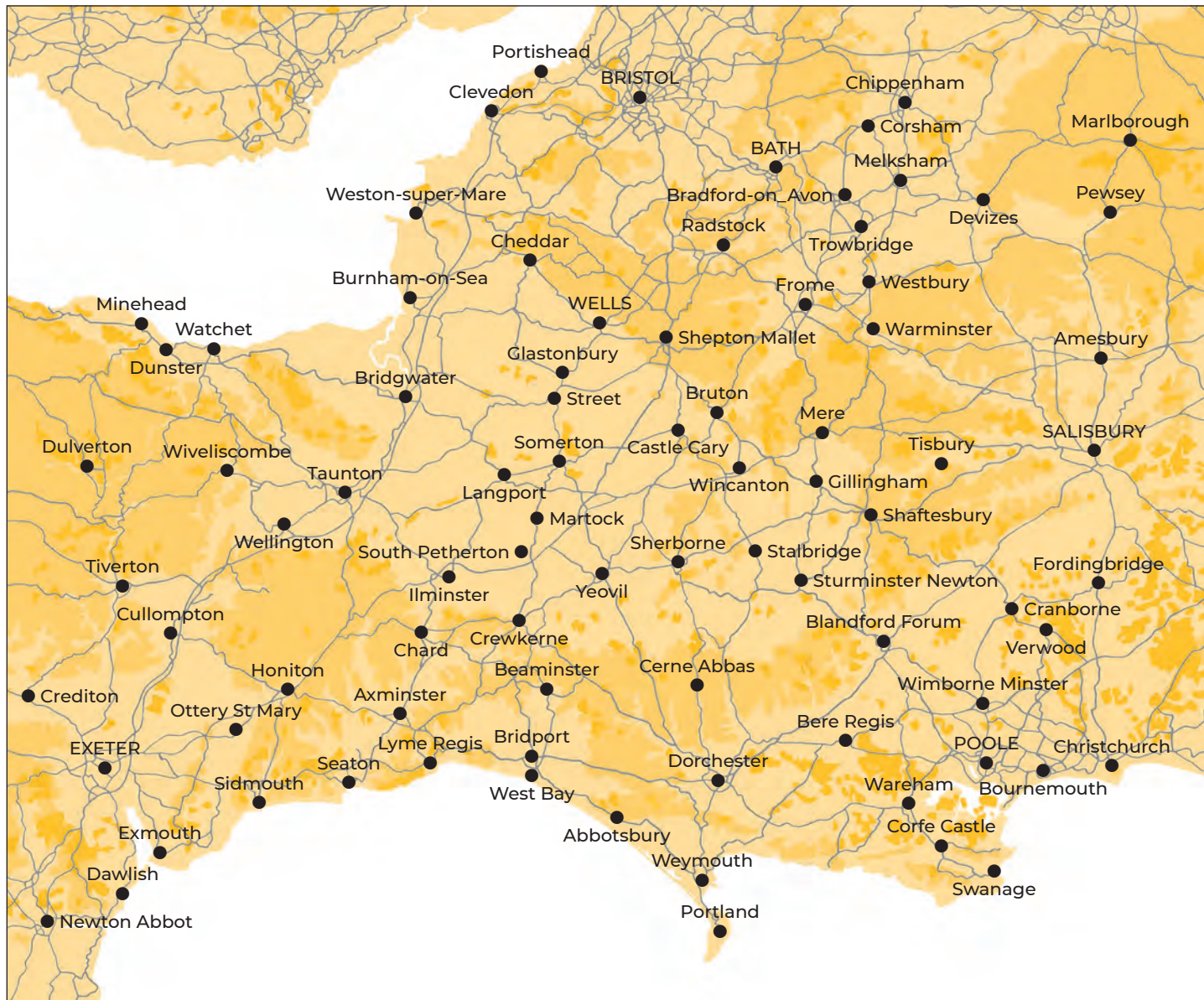
[acousticdistribution@btinternet.com](mailto:acousticdistribution@btinternet.com)

[acousticdistribution.co.uk](http://acousticdistribution.co.uk)



# EVOLVER MAGAZINE

WESSEX



Follow **EVOLVER** MAGAZINE on Instagram

evolvermagazine



## EVOLVER MAGAZINE

THE WESSEX ARTS AND CULTURE GUIDE

Editor SIMON BARBER

Assisted by SUZY RUSHBROOK

Evolver Writer

FIONA ROBINSON fionarobinson.com

Graphic Design SIMON BARBER

Website AZTEC MEDIA

Front Cover 'ODYSSEY' by SHELLEY DYER-GIBBINS  
(Linocut print)

## EVOLVER MEDIA

8 BUCKLAND ROAD, PEN MILL TRADING ESTATE,  
YEOVIL, SOMERSET BA21 5EA

Email [simon@evolver.org.uk](mailto:simon@evolver.org.uk)



Telephone 01935 808441

Website [evolver.org.uk](http://evolver.org.uk)

Instagram [evolvermagazine](https://www.instagram.com/evolvermagazine)

Twitter @SimonEvolver

Facebook [facebook.com/EvolverMagazine](https://www.facebook.com/EvolverMagazine)

Published by EVOLVER MEDIA LIMITED

Pre-Press by FLAYDEMOUSE  
01935 479453 / [flaydemouse.com](http://flaydemouse.com)

Printed by STEPHENS & GEORGE

Distributed by ACOUSTIC  
07397 853006 / [acousticdistribution.co.uk](http://acousticdistribution.co.uk)

**DEADLINE FOR EVOLVER MAGAZINE 123**

January and February 2022

TUESDAY 7 DECEMBER



# Outlets and Sponsors

**EVOLVER MAGAZINE** is available **FREE** at the following Wessex outlets:

ABBOTSBURY: Abbotsbury Studio, Dancel Gallery. AXMINSTER: Archway Bookshop, Axminster Arts Café, Sublyme Café. BATH: Bath Artists' Studios, Beaux Arts, The Bell Inn, The Edge / ICIA, Holburne Museum of Art, Michael Tippett Centre, University of Bath, Victoria Art Gallery. BEAMINSTER: Little Toller Books. BLANDFORD: Blandford Fashion Museum, Bryanston Arts Centre, Forum Café, Forum Framers. BOSCOMBE: Artcetera. BOURNEMOUTH: All Fired Up, Miramar Hotel, Pavilion Dance, Royal Bath Hotel, Russell-Cotes Museum & Art Gallery. BOWER HINTON: The Hollies Hotel. BRADFORD ON AVON: Wiltshire Music Centre. BRIDGWATER: Bridgwater Arts Centre, Clayhill Arts, Engine Room. BRIDPORT: Beach & Barnicott, Bridport Arts Centre, Bridport Old Books, The Bull Hotel, Clocktower Music, Literary and Scientific Institute, Lyric Theatre. BRISTOL: Arnolfini, Bocabar, The Bristol Artisan, Bristol Beacon, Bristol Fine Art, Centrespaces, Clifton Fine Art, Create Centre, Folk House, Jamaica Street Artists, Lime Tree Gallery, Bristol Old Vic, PRSC Gallery, RWA, Spike Island, St George's, Tobacco Factory, Trinity Centre, UWWE, Watershed. BROADWINDSOR: Redlands Yard. BRUTON: At The Chapel, Hauser and Wirth. BUDLEIGH SALTERTON: Brook Gallery. BURNHAM ON SEA: Princess Theatre & Arts Centre, Seabreeze Gallery. CASTLE CARY: Bailey Hill Bookshop, David Simon Gallery, Trowbridge Gallery. CHARD: Art Café, Barleymow's, Hornsbury Mill Hotel. CHARLTON: Glebe Gallery. CHARMINSTER: Flux Art Supplies. CHEDDAR: Cheddar Art School, Sketch Café. CHEDDON FITZPAINE: Hestercombe Gallery. CHESIL BEACH: Fine Foundation Centre. CHIPPENHAM: Chippenham Museum. CHRISTCHURCH: Hatch Gallery, Hayloft Gallery, Red House Museum, Regent Centre. CLEVEDON: Fizz Gallery, Studio 3. CORFE CASTLE: Boilerhouse Gallery, Gallery 41, Morton House Hotel, Village Stores. CORSHAM: Pound Arts. CREWKERNE: Phoenix Books. CROCKERTON: Bull Mill Arts. CROWCOMBE: Halsway Manor. CULLOMPTON: Cullompton Community College. CULMSTOCK: The Strand Stores. DEVIZES: Wiltshire Museum. DORCHESTER: Dorchester Arts, Duke's, Frank Herring & Sons, Gallery on The Square, The Little Keep, Vinyl Van. EAST LAMBROOK: East Lambrook Manor Gardens. EXETER: Academy of Music, Barnfield Theatre, The Cavern, Corn Exchange, Exeter School of Art, Glorious Art Cafe, Phoenix Arts Centre, Royal Albert Memorial Museum, Southgate Gallery. FROME: Bat Print Studio,

Black Swan Arts, Cheese and Grain, Fiat Lux, Merlin Theatre, Mount, Raves From The Grave, Rook Lane Arts, Rise Centre, Whittox Gallery. GILLINGHAM: Bowridge Gallery, The Idea Works, Slade Centre. GLASTONBURY: Abbey Muse Gallery, Bocabar, Facets Of Avalon, Glastonbury Galleries, Heart Of The Tribe Gallery, Red Brick Building, Rural Life Museum. HEMYOCK: Healthy Living Centre. HESTERCOMBE: Hestercombe Gallery. HIGHCLIFFE: In The Frame. HOLTON HEATH: Holton Lee. HONITON: The Beehive, Boston Tea Party, Hybrid Gallery, School Of Art And Wellbeing, Strummer Pink, Thelma Hulbert Gallery. ILMINSTER: Courtyard Gallery Cafe, Dillington House, Ilminster Arts Centre. KEYNSHAM: Chocolate Quarter. LANGPORT: 4 Every Cloud, Art Tea Zen, Hanging Gallery, Shakspeare Glass. LYME REGIS: Blue Lias, Coombe Street Gallery, Fine Art Framing, Marine Theatre, Studio 19. LYCHETT MINSTER: Barn Cafe, Courtyard Craft Centre. MARLBOROUGH: Framemakers, Rabley Contemporary Drawing Centre. MARTOCK: Martock Gallery Yandles Cafe. MILTON ABBAS: Dorset Crafty Barn, Luccombe Hub. MINEHEAD: Courtyard Framing, Leo Davey Gallery, Regal Theatre. MORCOMBELAKE: Artwave West. MUCHELNEY: John Leach Gallery. NEW MILTON: Forest Arts. NEWTOWN: R. C Arts. NORTH CURRY: Community Café. OTTERTON: Otterton Mill. PENN HILL: Josephine Wall Shop. PEWSEY: McNeill Gallery. POOLE: Arts University Bournemouth, Boiler Room Records, Bournemouth University Atrium Gallery, Guildhall Gallery, Lighthouse, Gallery Upstairs, Originals, Poole Museum, Poole Violins, Towngate Gallery And Framing. PORLOCK: Churchgate Gallery, Melody Art. PORTLAND: B-Side Outpost, White Stones. POUNDBURY: Gallery On The Square, Store 6. SALISBURY: City Hall, Fisherton Mill, Framemakers, Noble Art Supplies, Salisbury Arts Centre, Salisbury Museum, Salisbury Playhouse, Studio 53, Wiltshire Gallery, Young Gallery. SEATON: Arts Café, Savooni Art Gallery. SEAVINGTON: Village Shop. SHAFESBURY: The Cygnet, Grosvenor Hotel, Pictureframes, Shaftesbury Arts Centre. SHEPTON MALLET: One Craft Gallery. SHERBORNE: Artslink, Elementum Gallery, New Digby Hall, Old Barn Framing Gallery, Winstone's. SIDMOUTH: East Devon Art Academy, Flo and Us, Kennaway House, Winstone's. SOMERTON: ACE Arts, Gifted Company & Gallery Coffee Shop. SOUTH CADBURY: Chapel Cross Tea Rooms. SOUTH PETHERTON: David Hall. STALBRIDGE: Dike & Sons. STOBOROUGH: Furzebrook Studios. STOKE ST GREGORY: Willow & Wetlands Centre. STOURHEAD: First

View Gallery. STREET: Millfield School Atkinson Gallery, Strode Theatre. STURMINSTER NEWTON: The Exchange, Poet's Corner, Wessex Photographic. SWANAGE: 4Matt Framers and Gallery, Durlston Castle, Hollinghead Studio Gallery, L'Artishe Gallery, Mowlem Theatre, Mulberry Bush Gallery, Purbeck New Wave Gallery, Quarr Gallery, Sansom Gallery. SYMONDSBURY: Sou'-Sou'-West. TAUNTON: Brewhouse Theatre, CIC CIC, Fine Art And Framing, Jane Amour, Mount Somerset Hotel, Quantock Art And Framing, Queen's College, Tacchi-Morris Arts Centre, University Centre Somerset. TINCLETON: Tincleton Gallery. TISBURY: Messums Wiltshire. TIVERTON: Lantic Gallery. TROWBRIDGE: Arc Theatre, Court Street Gallery, Drawing Projects, The Lamb, Trowbridge Arts, Trowbridge Museum. VERWOOD: Campbell & Rose Gallery, The Hub. WAREHAM: Creative Gallery, Priory Hotel, Rex Cinema. WATCHET: East Quay, Watchet Gallery. WELLINGTON: Old Brick Workshop. WELLS: A2 Gallery, Andelli Art, Bishop's Eye, Good Earth, Heritage Courtyard Studios, Somerset Guild of Craftsmen Gallery and Shop. WEST BAY: Sladers Yard. WEST COKER: Lanes, Old School Room. WESTHAY: Somerset Crafts. WESTON-SUPER-MARE: Frame Station, Playhouse, Weston College. WEYMOUTH: Weymouth College, Weymouth Pavilion. WILLITON: Breeze Art Gallery. WIMBORNE: Allendale House, Square Records, Walford Mill Craft Centre. WINSCOMBE: Sidcot Arts Studio. WIVELISCOMBE: Community Office. WOODBURY: Woodbury Studio Gallery. WORTH MATRAVERS: Burngate Stone Centre. WRINGTON: Barleywood Studios. YEOVIL: Octagon Theatre, Yeovil Art Space. YETMINSTER: Old School Gallery.

Plus selected TOURIST INFORMATION CENTRES and LIBRARIES throughout Wessex

## EVOLVER SPONSORS

ACE Arts  
Acoustic Distribution  
Aztec Media  
B-Side  
Black Swan Arts  
Boilerhouse Gallery  
Bridport Arts Centre  
The Creative Gallery  
Dorset Visual Arts  
East Quay  
Fisherton Mill  
Gallery on the Square  
Heart of the Tribe Gallery  
Lyme Bay Arts  
Mount  
Project Factory  
The Slade Centre  
Sladers Yard  
Somerset Art Works  
Stephens & George  
Tincleton Gallery  
The Vanner Gallery  
Wiltshire Creative



Boilerhouse Gallery

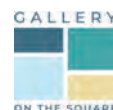
BRIDPORT ARTSCENTRE



DORSET VISUAL ARTS

EAST QUAY

FISHERTON MILL



HEART OF THE TRIBE GALLERY



SLADERS YARD



Tincleton Gallery





# EAST QUAY

OPEN DAILY EXCEPT MONDAYS  
GALLERIES AND STUDIOS 10AM-6PM  
KITCHEN 9AM-LATE

ART GALLERY  
PAPER MILL  
PRINT STUDIO  
CREATOR SPACE  
MAKER WORKSHOPS  
ARTISTS' STUDIOS  
GEOLOGY WORKSHOP  
COURTYARD EVENTS  
EAST QUAY KITCHEN  
SOCIAL ENTERPRISE  
MUSIC & CULTURE  
COMMUNITY



@eastquaywatchet

eastquaywatchet.co.uk