

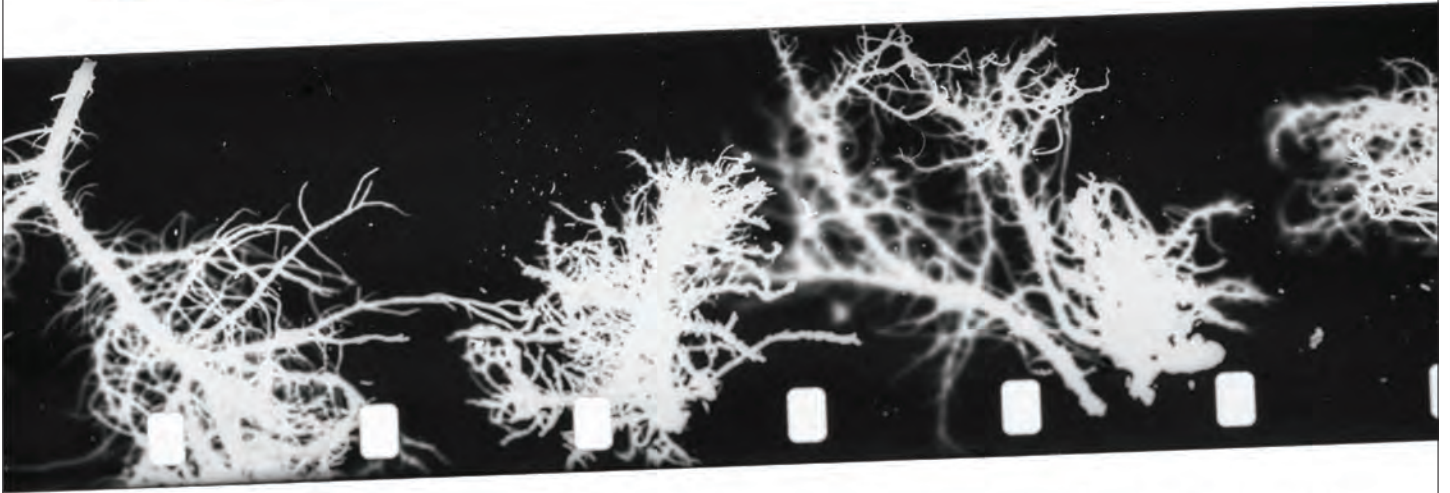
EVOLVER MAGAZINE

THE **FREE** WESSEX ARTS AND CULTURE GUIDE



EAST QUAY

BETTER THAN THIS
21.05.2022 - 31.08.2022
Kathy Hinde
Amy Howden-Chapman
Liv Torc



Contains Art CIO
Charity Number: 1193931



Supported using public funding by
**ARTS COUNCIL
ENGLAND**

@eastquaywatchet
eastquaywatchet.co.uk
Open daily 10am-6pm
01984 263103

**Wessex
Museums**

28 MAY – 30 OCT 2022

HARDY'S WESSEX

The landscapes that inspired a writer

DORSET MUSEUM

SALISBURY MUSEUM

POOLE MUSEUM

WILTSHIRE MUSEUM

A major exhibition across four museums

The largest collection of Thomas Hardy objects ever displayed at one time. Star loans from national collections, including Hardy's handwritten manuscripts.

wessexmuseums.org.uk/HardysWessex

Tess of the D'Urbervilles
Manuscript © British
Library Board.



Supported using public funding by
**ARTS COUNCIL
ENGLAND**

Art Fund



Battens
SOLICITORS



Made possible with
**Heritage
Fund**

EVOLVER MAGAZINE 125

May and June 2022



Exhibit A

Debbie Lee: Blind Man's Buff

Oil on canvas, 122 x 91 cm

ARTIST'S STATEMENT: "I work across a range of media including print, painting and animation. My work centres on storytelling and childhood. It is influenced by what is going on around me and in the wider world. I follow a path through dark and light themes, sometimes revisiting art of the past which resonates with my own experiences. I use imagined histories to tell my own story from a female artist's perspective living in today's world."

'NO WOMAN IS AN ISLAND'

Until 30 June: The Vanner Gallery, 45 High Street, SALISBURY, SP1 2PB. Tuesday - Saturday 10am - 5pm. 01722 501551 / vannergallery.com / debbieleeart.co.uk



FISHERTON MILL

voted
BEST CAFE IN WILTSHIRE



— SALISBURY

GALLERY



CAFE



STUDIOS



108 Fisherton Street, Salisbury, SP2 7QY

Monday - Friday 10am-5pm, Saturday 9.30am - 5.30pm

 WWW.FISHERTONMILL.CO.UK 

Visual Arts

May and June 2022



JOHN CONSTABLE 'WEYMOUTH BAY' (1816) © Victoria and Albert Museum

Hardy's Wessex

The author Thomas Hardy is synonymous with the Wessex landscape. He is a writer than can capture the very essence of the natural world in the written word - you can truly imagine yourself riding over the heathland with Diggory Venn, in the opening pages of *The Return of the Native* or walking a chalky Dorset lane in the month of May.

As a region we continually celebrate Hardy, the National Trust open both Hardy's Cottage, his childhood home, and Max Gate in and around Dorchester. He also has his own permanent gallery at the recently refurbished Dorset Museum, complete with the recreation of his Max Gate study. He alone attracts a wealth of tourists and academics to the area, all on their very personal pilgrimages.

This summer however, there is a unique quartet of exhibitions running in unison across Wessex. Previously unseen objects will be on display in Dorchester, Salisbury, Poole and Devizes, each focussing on a different element of the landscape that inspired Hardy. This unique idea was conceived by the collective that is 'Wessex Museums', a partnership that exists to support museums to connect and inspire, to build resilience among rural venues and enable them to thrive through collaboration.

This is the first exhibition they have all worked on collectively, overseen by curator Harriet Still, working with a team of designers on the production. Harriet worked for several years for the National Trust at Hardy's Cottage as well as for the Thomas Hardy Society and Shire Hall

Historic Courthouse Museum. During this time, she completed an MA in Museum Studies, perfectly qualifying her for this role. The exhibition has been three years in the making, from conception and Harriet's appointment in 2019, it was originally scheduled to open in 2021 but suffered the inevitable delays and complications of Covid. However, this increased timeframe has meant the addition of an altogether different dynamic, by being able to partner with the Arts University Bournemouth (AUB) Harriet has added a very contemporary element to these exhibitions, whilst engaging with the local community. Working with students from various BA and MA courses such as

Costume and Performance Design, Graphic Design, Creative Writing and Architecture, building amongst other things walk-in scenes to Hardy's novels, all contributing to creating another dimension and depth of experience.

Creator of numerous fascinating personalities, Hardy is a very intriguing character in his own right. He was a great collector of family heirlooms and keepsakes - items that meant something to him on a personal level, though seemingly uninteresting they tell their own unique story and give us an insight into the man himself. Many of these items have been in store since his death in 1928 and it is only now that they will get the chance to shine. One of Harriet's favourite pieces is 'granny's kettle', an old blackened kettle filled with limescale from Dorset's notoriously hard water. "We don't know what furniture the family possessed or have any of the clothes that they wore but such an everyday object survives, such a personal tangible piece." Evidence suggests that Hardy's grandmother may have suffered from dementia and that she would recount memories as the kettle boiled over the fire.

As well as showcasing Hardy pieces from the archives of these four Wessex museums each individual exhibition will also host a major loan from an international collection. This will be an opportunity to see handwritten manuscripts and accompanying notebooks complete with scribbles and sketches as well as significant paintings. Harriet says that one of the most exciting things about the exhibition is seeing all the objects together and relating to one another - to see the original manuscripts back on home turf, sitting in relevance to their landscape and in close proximity to their origins.

Suzy Rushbrook

28 May - 30 October

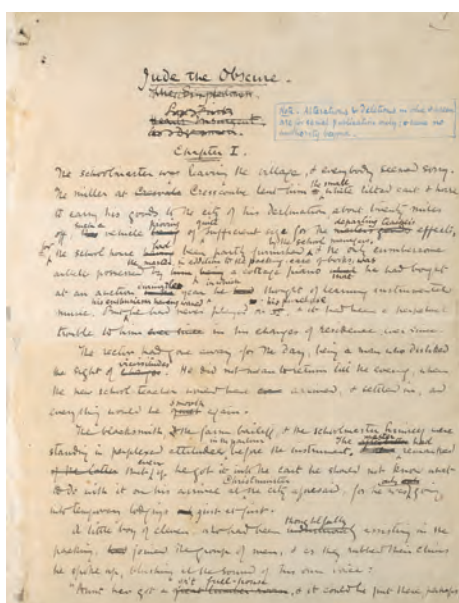
Dorset Museum, High West Street, DORCHESTER, DT1 1XA. Monday - Saturday 9am - 4.30pm, Sunday and Bank Holidays 10am - 4pm. 01305 262735 / dorsetmuseum.org.

Salisbury Museum, The Kings House, 65 The Close, SALISBURY, SP1 2EN. 10am - 5pm. 01722 332151 / salisburymuseum.org.uk.

Poole Museum, 4 High Street, POOLE, BH15 1BW. 10am - 5pm. 01202 128888 / poolemuseum.org.uk.

Wiltshire Museum, 41 Long Street, DEVIZES, SN10 1NS. Monday - Saturday 10am - 5pm, Sunday 11am - 3pm. 01380 727369 / wiltshiremuseum.org.uk.

wessexmuseums.org.uk



THOMAS HARDY 'JUDE THE OBSCURE' (Original manuscript, printer's copy, c. 1893 - 95) © The Syndics of the Fitzwilliam Museum, University of Cambridge

Visual Arts

CLIFF TOWLER, IAN HARGREAVES, ROB ADAMS Until 1 May

Not Just Sundaes Community Cafe, Holy Trinity, South Street, WAREHAM, BH20 4LU. Saturday - Monday 10am - 6pm. 07756 784027. "A collective personal retrospective of journeys made by three successful contemporary artists."

SAM FRANCIS : 'LET THE IDEA TRAVEL'

Until 1 May
Arnolfini, 16 Narrow Quay, BRISTOL, BS1 4QA. 11am - 6pm. arnolfini.org.uk. "As part of Arnolfini's 60th anniversary programme in 2021, artist Sam Francis was invited to respond to the performance piece 'Somerset - A Year in the Life of a Field' by Lizzie Cox, which was shown at Arnolfini in 1981."

'ENCONTROS E DESENCONTROS' Until 2 May

Guggleton Farm Arts, Guggleton Farm, Station Road, STALBRIDGE, DT10 2RQ, Tuesday - Saturday 11am - 3pm. 01963 353456. "Gouache portraits, paper illustrations, pastel observations and abstract pieces."

ANNABEL CARRINGTON

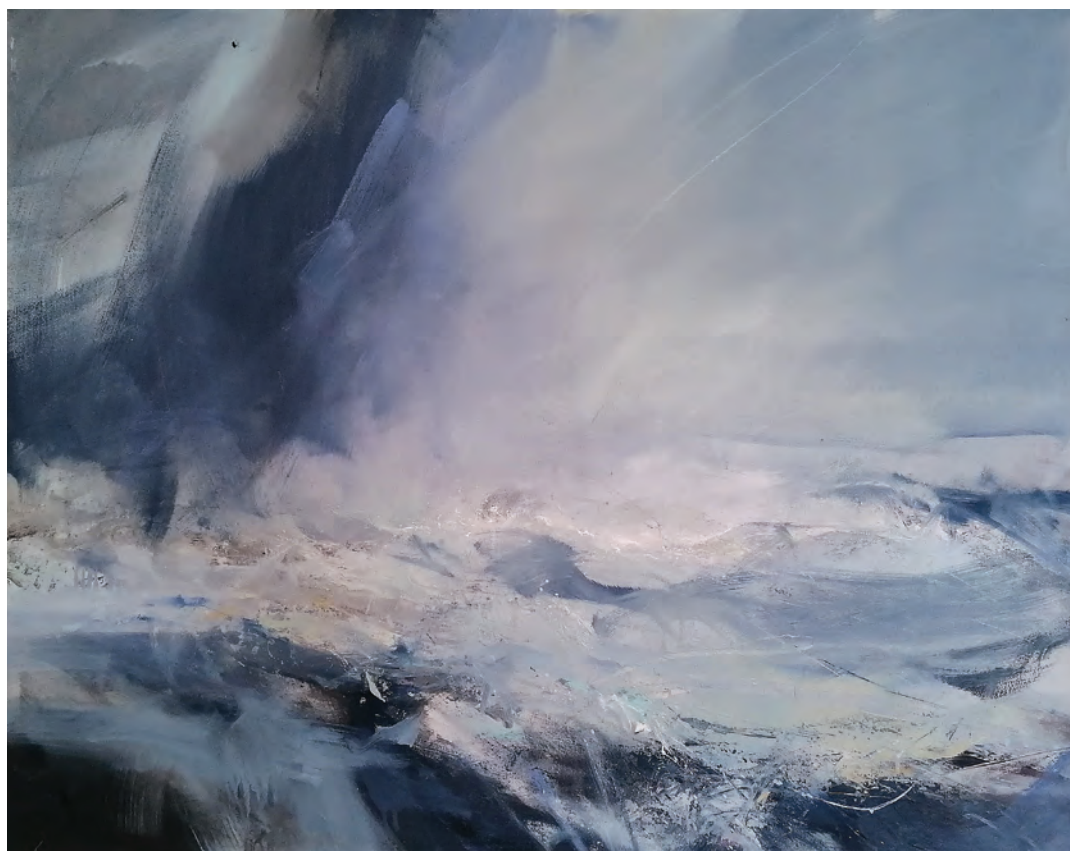
Until 3 May
The Gallery, Shaftesbury Arts Centre, Bell Street, SHAFTESBURY, SP7 8AR. Monday - Saturday 10am - 4pm. shaftesburyartscentre.org.uk.

'PROTECTING OUR PLANET'

Until 6 May
Central Gallery, Royal United Hospitals Bath NHS Foundation Trust, Combe Park, BATH, BA1 3NG. 8am - 8pm. 01225 824987 / artatruh.org / wildscreen.org. "A spectacular selection of imagery captured by indigenous photographers from across the globe."

'IMPRESSIONS'

Until 7 May
The Slade Centre, The Square, GILLINGHAM, SP8 4AY. Tuesday - Saturday 9am - 4pm. 07775 431652. "Work by Eric Bailey, Jane Barnard, and Victoria Garland."



'COLD WIND ACROSS THE SEA, SHETLAND' (Oil on canvas, 75 x 95 cm)

Janette Kerr

"Janette Kerr is an experimental contemporary artist whose work explores the boundaries between what is felt and what is seen in wild windswept places. She paints the weather, sea, light and wind, the more energetic the better, working both outside en plein air and in the studio. Her fascination extends to the people who live and have lived in the places she paints. Moving between abstraction and representation, she carries forward the ideas of the 18th Century Romantic sublime in paintings that embody terrifying thrilling confrontations with nature."

14 May - 2 July: Sladers Yard, WEST BAY, Bridport, DT6 4EL. Wednesday - Saturday 10am - 4.30pm. 01308 459511 / sladersyard.co.uk.

'THE COVID CHRONICLE'

Until 7 May
Chippenham Museum, 9 - 10 Market Place, CHIPPENHAM, SN15 3HF. Monday - Saturday 10am - 4pm. chippenham.gov.uk. "A textile art project capturing the national collective experience of the pandemic, featuring work by the Chippenham community."

'THE SEE WALL'

Until 8 May
East Quay, WATCHET, TA23 0AQ. 10am - 6pm. 01984 263103 / eastquaywatchet.co.uk. "Welsh artist Bedwyr Williams focuses on a fictional older artist and the obsessive care he takes to ensure all his clothing and belongings age at an equal rate."

'CARD, CHALK & CLAY'

Until 8 May
Eype Church Centre for the Arts, Mount Lane, EYPE, Bridport, DT6 6AR. Monday - Saturday 10am - 5pm, Sunday 10am - 4.30pm. 07114 60372 / eypechurcharts.co.uk. "Work by Jenny Penney, Caroline Ireland, and Naya Downes."

LUCINDA BURGESS

On Repetition

4 June - 3 July 2022

Preview 3 June 6-8pm

Q&A 3 July 2pm



BEYOND BODY

SIMON HITCHENS

30 APRIL -
26 MAY 2022

Preview 29 Apr
6-8pm

Q&A 1 May 12pm
19 May 6.30pm

galleries | round tower | studios | shop | cafe
2 Bridge Street, Frome BA11 1BB | 01373 473980

 **BLACKSWANARTS**

www.blackswanarts.org.uk
FREE ENTRY | Registered Charity No. 292463

GALLERY
AT THE
STATION

@galleryatthestation

@galleryatthestationfrome

A new, contemporary art space in Frome.

Follow us on social
media to see our exciting
programme for 2022.

Gallery At The Station
Frome, BA11 1RE

info@galleryatthestation.com

FIFTY BEES 5

Lydia Needle



9 April – 14 May

Fifty bees sculpted from wool, thread and vintage containers with companion works created by fifty artists, inspired by the ecology of one of those bee species, to present a wonderfully unique and diverse narrative about the interconnection between our flora and fauna.



Market Place, Somerton, Somerset TA11 7NB
www.acearts.co.uk

WHILE I STAND AND LOOK

26th MAY - 3rd JULY



An exhibition of work by

FRANCES WATTS

Frances Watts is a Somerset based artist that encapsulates the essence of the South West landscape with her accomplished plein air paintings. Through her talented use of a palette knife or large brush, Frances paints the details of her surroundings quickly. This enables her to convey the stunning scenery through enticing textures and dynamic colours.

On Saturday 28th May, Frances will spend the afternoon painting in our stunning gallery garden. This is a great opportunity to watch the artist at work and enjoy the tranquility of this beautiful space.

UPCOMING EVENTS AT THE GALLERY INCLUDE:

- ART TALKS • DEMONSTRATIONS • CREATIVE SOCIALS • POETRY NIGHTS
- WORKSHOPS • AND MORE



SCAN CODE FOR MORE INFO

01458 832167

Gallery@HeartofTheTribe.com

www.HeartofTheTribe.com

[f](https://www.facebook.com/HeartofTheTribeGallery) [i](https://www.instagram.com/HeartofTheTribeGallery) @HeartofTheTribeGallery

74 High Street, Glastonbury, BA6 9DZ



HEART OF
THE TRIBE
ART GALLERY

GALLERY OPEN DAILY 11.00 - 17.00
(CLOSED WEDNESDAYS)

Please visit our website for more
information about our artists and events



SARAH JANE ROSS: 'ENCLOSURE ACTS'

Until 8 May

Sou'-Sou'-West Arts Gallery, Symonds Estate, BRIDPORT, DT6 6HG. 10.30am - 4.30pm. 01308 301326 / sousouwest.co.uk. "Contemporary landscape paintings."

Above: 'Colmers Hill Springtime'

'SPRING EXHIBITION'

Until 9 May

Churchgate Gallery, High Street, PORLOCK, TA24 8PT. 9am - 5.30pm. churchgategallery.co.uk. "Original paintings and prints."

'THROUGH WEST COUNTRY EYES'

Until 9 May

The Octagon Theatre, Hendford, YEOVIL, BA20 1UX. Monday - Saturday 10am - 5pm. 07599 517958. Photographs by Richard Lawrence and Gillian Ann Hooker.

KIM VON COELS: 'THE COLOUR OF LIGHT'

Until 9 May

Heart of The Tribe Gallery, 74 High Street, GLASTONBURY, BA6 9DZ. 11am - 5pm. heartofthetribe.com. "Bold and colourful shapes, layers and geometric patterns."

PETER GILBERT

Until 12 May

Hatch Gallery, 7a Church Street, CHRISTCHURCH, BH23 1BW. Tuesday - Saturday 11am - 4pm. 07787 517958 / hatchgallery.co.uk.

ESMÉ LLOYD: 'BLACK SKY CITY'

Until 14 May

Thelma Hulbert Gallery, Dowell Street, HONITON, EX14 1LX. Tuesday - Saturday 10am - 5pm. 01404 45006 / thelmahulbert.com.



'MEADOW' (Acrylic on canvas, 40 x 40 cm, 2021)

Corrina Cooper: Beyond Pop

"A solo show reimagining the everyday. An examination of still life captured in stained glass iterations together with floral attributes that are routed within art deco and pop art influences. A position that fractures thought geometrically but still holds a grasp on reality."

4 - 10 May: The Gallery, Shaftesbury Arts Centre, Bell Street, SHAFTESBURY, SP7 8AR. Monday - Sunday 10am - 4pm. 01747 855243 / corrinacooper.co.uk.

NICK GOSS: 'MUD ANGELS'

Until 14 May

Thelma Hulbert Gallery, Dowell Street, HONITON, EX14 1LX. Tuesday - Saturday 10am - 5pm. 01404 45006 / thelmahulbert.com. "New series of paintings and works encapsulating the impermanence of our surroundings."

'FIFTY BEES 5'

Until 14 May

ACE Arts, Market Place, SOMERTON, TA11 7NB. Tuesday - Saturday 10am - 5pm. 01458 273008 / acearts.co.uk. "Collaborative

exhibition presenting a wonderfully unique and diverse narrative about the interconnection between the flora and fauna of our ecosystem."

'EXTRAVAGANT DISJUNCTION'

Until 14 May

ACE Arts, Market Place, SOMERTON, TA11 7NB. Tuesday - Saturday 10am - 5pm. acearts.co.uk. "Works from a group of young emerging artists, exploring themes from inconsistency and upset in everyday life, to the constant changes and development in personal art practice."



DAVID R ABRAM: 'ANCIENT SITES FROM THE AIR'

Until 15 May

The Salisbury Museum, The Kings House, 65 The Close, SALISBURY, SP1 2EN. 10am - 5pm. salisburymuseum.org.uk. "Taken in beautiful lighting conditions, David R Abram's work reveals the ancient wonders hiding in plain sight around us, from Neolithic monuments on the Wessex chalklands to Iron Age crannogs in Hebridean lochs. The majority of the extraordinary prehistoric sites featured are in the Salisbury area." Above: 'Barbury' (2021)

JEANNETTE HAYES

Until 20 May

Artwave West, MORCOMBELAKE, DT6 6DY. Tuesday - Saturday 10am - 5pm. artwavewest.com. "Alive with dynamic expressive energy, Jeannette's landscapes resonate with a liberated optimistic creativity. Works are constructed out of lines and blocks of evocative colour; abstract activity is finely balanced with landscape reference."

SALLY STAFFORD: 'HOMECOMING'

Until 20 May

Clifton Contemporary Art, 25 Portland Street, Clifton, BRISTOL, BS8 4JB. Tuesday - Saturday 10am - 5pm. 0117 317 9713 / cliftoncontemporaryart.co.uk. "New paintings."

FRI 27 MAY - SAT 16 JULY

CELEBRATIONS

Celebrating a year long collaboration with our artists and communities, an exhibition bringing together documentations, sharing, reflections and insight into our vision and mission to MAKE YEOVIL CREATIVE!

In conjunction with our 2nd birthday event on the 27 May and the Jubilee Celebration.

See website for more details.

Artist Tom Goddard & YAY (Young Artist Yeovil)

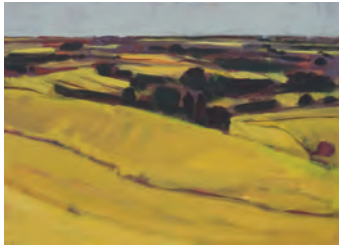
YEOVIL ART SPACE

www.yeovilartspace.uk



Supported using public funding by
ARTS COUNCIL ENGLAND

Visual Arts



NICK PHILLIPS: 'OBSERVED AND ABSTRACTED'

Until 21 May

Fisherton Mill Salisbury, 108 Fisherton Street, SALISBURY, SP2 7QY. Monday - Friday 10am - 5pm, Saturday 9.30am - 5.30pm. 01722 415121 / fishertonmill.co.uk. "Nick makes work with a conscious eye on the final image, and its place as a totem or symbol, he sees his work as a point to launch a meditation on landscape."

Above: 'Daylight 14'

ANNUAL PRINTMAKERS OPEN

Until 22 May

Sou'-Sou'-West Arts Gallery, Symonds Estate, BRIDPORT, DT6 6HG. 10.30am - 4.30pm. 01308 301326 / sousouwest.co.uk. "Etchings, woodcuts, linocuts, collographs, carborundum, dry points, mokuhanga, monoprints, lithographs, and more."

SIMON HITCHENS: 'BEYOND BODY'

Until 29 May

Black Swan Arts, 2 Bridge Street, FROME, BA11 1BB. Monday - Sunday 10am - 4pm. 01373 473980 / blackswanarts.org.uk. "Sculptures, paintings and drawings of uncanny and speculative beings which seek to re-conceive the human."



'WORKING BOAT'

Robert Crisp: Reflections of Venice

"The result of Robert's five years of study, experimenting with different surfaces, grounds and mediums to capture the atmosphere of Venice in a visually recognisable way, but in an abstract style."

28 May - 12 June: Sou'-Sou'-West Arts Gallery, Symonds Estate, SYMONDSBURY, Bridport, DT6 6HG. 10.30am - 4.30pm. 01308 301326 / sousouwest.co.uk.

PAULA REGO

Until 29 May

Arnolfini, 16 Narrow Quay, BRISTOL, BS1 4QA. Tuesday - Sunday 11am - 6pm. 0117 917 2300 / arnolfini.org.uk. "Featuring over 70 prints, Paula Rego casts herself as storyteller and master puppeteer, interweaving her wit and dark humour to reimagine stories old and new."

'HOPE AND HUMANITY IN THE COMMONWEALTH'

Until 31 May

Central Gallery, Royal United Hospitals, Combe Park, BATH, BA1 3NG. Monday - Sunday 8am - 8pm. 01225 824987 / artatruh.org.

ALINA MAKSIMENKO

Until 5 June

Royal Crescent Hotel & Spa, 16 Royal Crescent, BATH, BA1 2LS. 9am - 6pm. "Sheltering in Vienna after a seven day flight from Kyiv. Alina is a painter with work in prestigious public galleries in the Ukraine."

KATE LYNCH: 'CRAFT - SOMERSET PORTRAITS AND VOICES'

Until 5 June

Somerset Rural Life Museum, Chilkwell Street, GLASTONBURY, BA6 8DB. Tuesday - Saturday 10am - 4pm. srlm.org.uk / katelynch.co.uk. "Somerset artist Kate Lynch documents the people practising old crafts and trades in Somerset."

MILENA PRZYTYLA: 'THE DREAMER'

Until 10 June

Atrium Gallery, Bournemouth University, Poole House, Talbot Campus, Fern Barrow, POOLE, BH12 5BB. Monday - Saturday 9am - 5pm. 07881 883334. "Extraordinary photographs showcasing children's beauty and emotions."



Gallery and Online Exhibition of New Paintings from the wild animal kingdom of Kenya and its people by **MOISH SOKAL**



Milk for Baby

Watercolour 16" x 20"

The Malthouse Gallery

East Lambrook Manor Gardens, Somerset TA13 5HH

Saturday 4th June - Saturday 23rd July

Tues to Sat • 10am to 5pm • moishsokal.co.uk • 01935 881350



111th Annual Paintings Exhibition

3-12 June 2022

Open every day 10.00am - 4.30pm

The Red Lodge, Park Row, Bristol, BS1 5LJ

Entrance in Lodge Street

Paintings for Sale

Entrance Free

www.bristol1904arts.org

@1904arts

@bristol1904arts

facebook.com/B1904A

admin@bristol1904arts.org



Visual Arts



ROY LICHTENSTEIN 'GIRL IN THE WOODS'
(Original woodcut on Arches paper, 1980)

Pop Art

"An exhibition featuring works by Roy Lichtenstein, Andy Warhol, Keith Haring, David Hockney, Peter Blake, and Patrick Caulfield. This selling collection of work includes signed, original multiples of this iconic period of 20th century art."

9 May - 11 June: David Simon Contemporary, 37 High Street, CASTLE CARY, BA7 7AW. Monday - Saturday 10am - 5.30pm. 01962 359102 / davidsimoncontemporary.com.

'PICASSO'

Until 11 June

The Courthouse Gallery, Market Place, SOMERTON, TA11 7LX. Wednesday - Saturday 10am - 5pm. 07535 520186 / courthousegallery.uk. "A chance to view and own a small piece of one of the twentieth century's most innovative and dynamic artists."



'WATERLINE 2022'

Until 12 June

Rotunda Gallery, Lyme Regis Museum, Bridge Street, LYME REGIS, DT7 3QA. Tuesday - Saturday 10am - 5pm, Sunday 10am - 4pm. £5.95. lymeregismuseum.co.uk. "Photographs by Tricia Scott and Lois Wakeman, featuring the weathered and textured surfaces of boats. Lose yourself in imaginary scenes of peeling paint and worn wood."

MIXED SPRING EXHIBITION

Until 16 June

Tincton Gallery, The Old School House, TINCLETON, near Dorchester, DT2 8QR. Friday - Monday 10am - 4pm. 01305 848909 / tinctongallery.com.

'QUEEN AND COMMUNITY'

Until 18 June

Crewkerne & District Museum, The Heritage Centre, Market Square, CREWKERNE, TA18 7LP. Monday, Thursday, Friday and Saturday 10am - 4pm. crewkernemuseum.co.uk.

'IN XANADU - COLERIDGE AND THE WEST COUNTRY'

Until 25 June

Museum of Somerset, Castle Lodge, Castle Green, TAUNTON, TA1 4AA. Wednesday - Saturday 10am - 5pm. museumofsomerset.org.uk. "An exhibition in partnership with the British Library to showcase the earliest manuscript of Samuel Taylor Coleridge's extraordinary poem Kubla Khan."



JULIA MANNING and NIK POLLARD: 'ENDANGERED'

Until 25 June

The Whittox Gallery, Whittox Lane, FROME, BA11 3BY. Tuesday - Saturday 9am - 4pm. 07712 523734 / thewhittoxgallery.com. "Acclaimed South West artists and members of The Society of Wildlife Artists."

RAY BALKWILL: 'THE RIVER'S VOICE'

Until 26 June

The Cafe, RAMM, Queen Street, EXETER, EX4 3RX. Tuesday - Sunday 10am - 5pm. 01392 265858.



Cedars Hall Arts Talks Series

W E L L S

We launch CHATS in response to Antony Gormley's new sculpture DOUBT, on loan to Wells until March 2023. These monthly talks will take place at 7pm in Cedars Hall, Wells Cathedral School. Young musicians from Wells will perform in the auditorium before each talk. Conversations will continue after the talk, join us for a glass of wine and supper. Booking essential.



20.05.22 Xa Sturgis

In this talk the Director of the Ashmolean tells the eventful story of the museum through ten objects from the collection. He traces its history from pioneering beginnings to the great museum that it is today.

16.06.22 Olivia Fraser, artist and great niece of Surrealist painter Eileen Agar. Olivia has produced profound works inspired by the art and symbolism of India - paintings that could be considered spiritual road maps to reflect a journey within.



15.09.22 Rachel Campbell-

Johnston, chief art critic of

The Times and biographer, will discuss *Visions of Albion: Samuel Palmer and William Blake* and how their relationship had a profound influence on the young Palmer's work.

11.11.22 Curator of the Ingram Collection, **Jo Baring** in conversation with artist **Olivia Bax**

08.12.22 Art critic and writer, **Hettie Judah** discusses her new books *Lapidarium* and *How Not to Exclude Artist Mothers*.



CHATS will be livestreamed

Tickets are available online at cedarshall.co.uk or through the box office: **01749 834483**

£10 per ticket, £20 with supper, under 19s free

CHATS is kindly supported by

Terence Mordaunt and the Blair Foundation

EAST QUAY OPEN STUDIOS 13-22 MAY

10am - 4pm
FREE

**EAST
QUAY**

Watchet, Somerset TA23 0AQ
www.eastquaywatchet.co.uk

fine art printing
mount-art.co.uk



image by inlethdesign

mount



The Covid Chronicle

A National Experience Shared Through Textile Art

9 April - 7 May 2022

Free entry, 10am - 4pm, Monday - Saturday
Chippenham Museum, Market Place

Open until 7pm: Thursday 14 April & Thursday 5 May

Tincleton Gallery

contemporary fine art in Dorset

Spring exhibition

gallery & guest artists
Until 16 June 2022



Raku stoneware pony by Alison Wear

The Old School House, Tincleton, near Dorchester, DT2 8QR
Friday / Saturday / Sunday / Monday • 10am - 5pm
01305 848909 • tinctongallery.com

Visual Arts

GAIL MASON: 'LANDMARKS'

Until 28 June

The Bishops Palace, WELLS, BA5 2PD. 9.30am - 5.30pm. £16. 01749 988111 / thebishopsalace.org.uk / gailmason.co.uk. "Gestural, painterly, expressive and atmospheric imagined landscapes on paper and canvas." See front cover.

'NO WOMAN IS AN ISLAND'

Until 30 June

The Vanner Gallery, 45 High Street, SALISBURY, SP1 2PB. Tuesday - Saturday 10am - 5pm. 01722 501551 / vannergallery.com. "Works by Cath Bloomfield, Phoebe Cummings, Nicky Knowles, Debbie Lee, Rebecca Newnham, Sarah Purvey and Patricia Volk explore what it means to be a creative woman in the 21st century."

'CELEBRATED WOMEN OF FROME'

Until 10 July

Frome Heritage Museum, 1 North Parade, FROME, BA11 1AT. Tuesday - Saturday 10am - 2pm. 01373 454611 / frome-heritage-museum.org.

'POETS, PLUMBERS AND POLITICIANS'

Until 19 July

Arundells, 59 Cathedral Close, SALISBURY, SP1 2EN. Friday - Tuesday 11am - 5pm. £3.50. 01722 331440 / arundells.org. "Renowned sculptor Martin Jennings presents maquettes of his statues of famous national figures alongside the stories behind their full-size realisations."

CAZ SCOTT

Until 30 September

Museum of Jurassic Marine Life, KIMMERIDGE, BH20 5EP. 10am - 5pm. 01929 270000 / cazscott.art. "Paintings inspired by the landscape, rocks and fossils of the Jurassic coast around Purbeck."

KATY TUNSTALL

1 - 31 May

The Creative Gallery, St John's Hill, WAREHAM, BH20 4NB. Monday - Saturday 10am - 5pm. 01929 551505. "Katy's slab built stoneware vessels offer two faces for her floral and birdlife decoration."



SIR ANTHONY GORMLEY OBE 'CONCENTRATE II' (Cast iron, 305 x 192 x 52 cm, 1996)

Me, Myself, I: Artists' Self-Portraits

The RWA in Bristol is reopening at the beginning of May after the most significant refurbishment in over a century. The opening show *Me, Myself, I: Artists' Self-Portraits* curated by Tessa Jackson OBE is a fascinating insight into how artists view themselves and how they want to be viewed by others. It ranges from eighteenth century traditional takes on portraiture to our current self-obsessed selfie culture including how the 'National Treasures' of our age, Grayson Perry and Tracey Emin amongst them, manipulate their image. It explores serious issues of women's place in society, suffrage, immigration and identity. An apparently eclectic choice but linked by, 'the essence of the artist under self-examination', it includes well-known names: Sonia Boyce, Antony Gormley, Angelica Kauffman, Patrick Heron, Gillian Wearing, Lucien Freud and Sir Joshua Reynolds alongside emerging artists.

The Academy's building project has taken longer and cost more than expected but the beautiful upstairs galleries have new walls, oak floors and new roof lights gifting the spaces wonderful natural light. The piazza style forecourt has insect friendly planting leading to floor to ceiling glass doors that open into a new café and the foyer. Downstairs there is a Family Activity Room, a quiet space for those with sensory issues and a Changing Places Facility which will allow severely disabled visitors to come to the gallery for the first time.

Most eye-catching of all as you walk down Whiteladies Road is the new lift sited against the side of the building. It is clad in stunning enamel tiles based on a drawing by Peter Randall-Page RA RWA.

Fiona Robinson

2 May - 19 June: Royal West of England Academy, Queen's Road, Clifton, BRISTOL, BS8 1PX. Tuesday 10am - 5pm, Wednesday 10am - 8pm, Thursday - Sunday 10am - 5pm. rwa.org.uk.



15 APRIL – 30 JUNE 2022

No Woman is an Island

Creative women in the 21st century

EXHIBITING ARTISTS: Cath Bloomfield, Phoebe Cummings, Nicky Knowles RWA, Debbie Lee, Rebecca Newnham FRSS, Sarah Purvey, Patricia Volk RWA FRSS

Curated by Jacqueline Creswell

THE VANNER GALLERY 45 High Street Salisbury SP1 2PB vannergallery.com



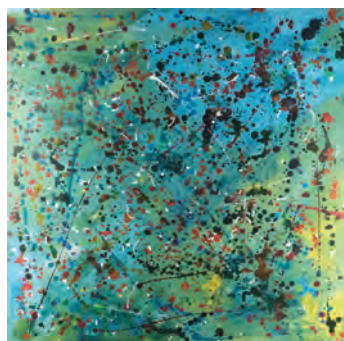


ZOE SNAPE

East Quay Open Studios: Blue

"East Quay artists and friends have been thinking about 'Blue', so we're inviting you to come along and think about 'Blue' too."

13 - 22 May: East Quay, WATCHET, TA23 0AQ. 10am - 4pm. 01984 263103.



ANNA PERRA & TONY CHURCH:

'JOURNEY'

3 - 9 May

Silk Mill Studios, Merchants' Barton, FROME, BA11 1PT. 11am - 6.30pm. 01985 844305 / silkmillstudios.co.uk.

CLAIRE THOMAS

4 - 24 May

Ron Holmes Gallery, Shaftesbury Arts Centre, Bell Street, SHAFTESBURY, SP7 8AR. Monday - Saturday 10am - 4pm. 01747 855243 / shaftesburyartscentre.org.uk.

TOBIAS MOORS: 'STUCK FAST'

6 May - 5 June

Pen Gallery, 28 Kingland Crescent, POOLE, BH15 1TB. pengallery.co.uk. "Gritty series of fabric paintings, intoxicated in patterns and colour."



'FOUND'

8 May - 26 June

Shippin Gallery, Hook Farm, CHARDSTOCK, EX13 7DD. Saturday 11am - 4pm. 01460 220021 / theshippongalleries.com. "Dave King, Jenny Graham (above) and Jacy Wall have a conversation with the land in ceramic, plaster, textiles, found objects, print and drawings."

ANTONIA PHILLIPS: 'LIVING LANDSCAPES'

9 - 29 May

Sou'-Sou'-West Arts Gallery, Symonds Estate, BRIDPORT, DT6 6HG. 10.30am - 4.30pm. sousouwest.co.uk. Paintings.

SILTON ART GROUP

11 - 17 May

The Gallery, Shaftesbury Arts Centre, Bell Street, SHAFTESBURY, SP7 8AR. Monday - Saturday 10am - 4pm. 01747 855243 / shaftesburyartscentre.org.uk.

'BEYOND THE STORM'

13 - 20 May

Kennaway House, Coburg Road, SIDMOUTH, EX10 8NG. 10am - 4pm. kennawayhouse.org.uk.

'ULTRA AESTHETICS'

16 May - 12 June

Gallery At The Station, Station Approach, FROME, BA11 1RE. Monday - Saturday 10am - 4pm. 07970 462395. "Top UK graffiti artist, Paris, presents an installation looking at his career from the '90s to present day."

'ISLAND LIFE'

17 May - 3 July

Salisbury Arts Centre, Bedwin Street, SALISBURY, SP1 3UT. Tuesday - Saturday 10am - 3pm. wiltshirecreative.co.uk. "This exhibition will bring together artists who address the political, social or economic conditions of living on islands."

VIVIENNE RUDD AND RAY SLATE

18 - 24 May

The Gallery, Shaftesbury Arts Centre, Bell Street, SHAFTESBURY, SP7 8AR. Monday - Saturday 10am - 4pm. shaftesburyartscentre.org.uk.

'QUIRKY QUILTERS'

19 and 20 May

Long Sutton Golf Club, LONG LOAD, Langport, TA10 9JU. Thursday 10am - 6.30pm, Friday 10am - 4.30pm. £3. 01458 241017.

IAN MCKEEVER AND MICK

MASLEN

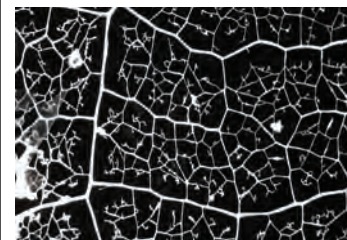
20 May - 1 July

The Young Gallery, Salisbury Library, Market Place, SALISBURY, SB1 1BL. Monday and Tuesday 9am - 7pm, Wednesday - Saturday 9am - 5pm. younggallerysalisbury.co.uk.

ACE ARTS OPEN

21 May - 25 June

ACE Arts, Market Place, SOMERTON, TA11 7NB. Tuesday - Saturday 10am - 5pm. 01458 273008 / acearts.co.uk. "A vibrant show."



'BETTER THAN THIS'

21 May - 31 August

East Quay, Harbour Road, WATCHET, TA23 0AQ. 10am - 6pm. eastquaywatchet.co.uk. "Kathy Hinde, Amy-Howden-Chapman and Liv Torc present new works that reflect on our relationship to the earth and nature and give voice to the possibility that we can be better than this."

GALLERY ON THE SQUARE



May 7
to June 5
JUDY TATE
and
MIKE WILLDRIDGE



Regular gallery artists include Colin Willey, John Boyd, Debra Sweeney, Philip Winstone

Queen Mother Square, Poundbury, Dorchester DT1 3BL

Mon-Sat, 9.30am to 5pm; Sundays: 11am to 4pm

01305 213322

www.gallerypoundbury.co.uk

Sou'-Sou'-West

Printmakers Open

April 30-22 May

Mixed Show

Summer Exhibition 2022

June 18-10 July

Bridport Arts Society

Reflections of Venice

28 May-12 June

Rob Crisp

Enclosure Acts

25 April-8 May

Sarah Jane Ross

Antonia Phillips

9 May-29 May

Living Landscapes

Sally Maltby

Mainly Flowers of the Wayside

20 June-03 July



Dorset
Council



LOTTERY FUNDED

Supported using public funding by
**ARTS COUNCIL
ENGLAND**



Gallery & Shop

Daily: 10:30 - 16:30

Manor Yard, Symondsbur Estate,
Bridport, DT6 6HG

sousouwest.co.uk



CALL
FOR
ENTRIES

DEADLINE:
SUN
12
JUNE
2022

EXETER
CONTEMPORARY
OPEN

exetercontemporaryopen.com

£1000 Overall Award
£300 Additional Award
£200 Audience Choice Award

exeter **phoenix**

MUSIC | PERFORMANCE | ART | FILM

EXETERPHOENIX.ORG.UK

RWA

Explore our
newly renovated space



Me, Myself, I: Artists' Self-Portraits

2 May - 19 June 2022

rwa.org.uk

Royal West of
England Academy
Queens Road, Clifton,
Bristol, BS8 1PX

Tony Bryan RA, Head and Neck, ©Royal Academy
of Arts, London/Photo: John Hammond

ARTCETERA

EST. 1970

Picture Framing & Artists Materials



01202 423408 artcetera853@gmail.com 853 Christchurch Road BH7 6AR



'UNFRAMED'

Lucinda Burgess: On Repetition

"Sculptural works in steel, charred wood, glass and Indian Khadi paper exploring the nature of materiality."

4 June - 3 July: Black Swan Arts, 2 Bridge Street, FROME, BA11 1BB. Monday - Sunday 10am - 4pm. 01373 473980 / blackswanarts.org.uk.



WICKEY FARMER AND GARETH READ: 'DUO'
25 - 31 May

The Gallery, Shaftesbury Arts Centre, Bell Street, SHAFTESBURY, SP7 8AR. Monday - Saturday 10am - 4pm. 01747 855243 / shaftesburyartscentre.org.uk. "An exhibition of bold artwork by two contemporary Dorset artists."

ELFYN LEWIS

25 May - 17 June

Artwave West, MORCOMBELAKE, DT6 6DY. Tuesday - Saturday 10am - 5pm. artwavewest.com. "Elfyn's paintings feature strong atmospheric colour, tonal variation and emphatic gesture containing a multitude of textures. Transparency meets opacity, luminosity contrasts with solidity, and the movement of paint through dragging feels exciting."

FRANCES WATTS: 'WHILE I STAND AND LOOK'

26 May - 3 July

Heart of The Tribe Gallery, 74 High Street, GLASTONBURY, BA6 9DZ. 11am - 5pm. 01458 832167 / heartofthetribe.com. Paintings.



'CONVOLUTIONS IN CLAY'

27 May - 21 June

The Young Gallery, Salisbury Library, Market Place, SALISBURY, SB1 1BL. Monday and Tuesday 9am - 7pm, Wednesday - Saturday 9am - 5pm. jotaylorceramics.com. "Combining throwing on the potter's wheel and handbuilding, Jo Taylor's complex works are all created in a small studio at her home in Corsham."

'CELEBRATIONS'

27 May - 16 July

Yeovil Art Space, 23 Vicarage Walk, Quedam Shopping Centre, YEOVIL, BA20 1EU. Wednesday - Friday 10am - 4pm, Saturday 10am - 5pm. yeovilartspace.uk. "Celebrating a year long collaboration with our artists and communities, this exhibition brings together sharings, reflections and insight into our vision and mission to make Yeovil creative!"

POP UP ART MARKET

28 May

United Church Hall, Bell Street, SHAFTESBURY, SP7 8AL. 10.30am - 4.30pm. 01747 229651.

'NEW HORIZONS'

28 May - 2 June

Kairos Art, 7 Market Place, WINCANTON, BA9 9LL. Saturday 10am - 2pm, Tuesday - Thursday 10am - 4pm. 07740 048882. Paintings by Camilla Redfern and Runima Kakoty.

'ART, SCENT AND SYNAESTHESIA'

28 May - 24 June

Keyneston Mill, TARRANT KEYNESTON, DT11 9HZ. 10am - 5pm. 01258 786022 / keynestonmill.com. "Based on synaesthesia, Jan Dagley's vibrant and engaging work is in response to fragrance."

DEVON ARTIST NETWORK:

'FRESH!'

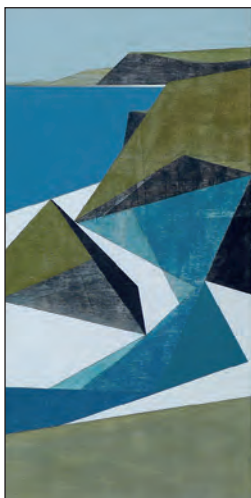
28 May - 23 July

Thelma Hulbert Gallery, Dowell Street, HONITON, EX14 1LX. Tuesday - Saturday 10am - 5pm. 01404 45006 / thelmahulbert.com. "New works by leading artists and creatives from Devon Artist Network."

'LISA MALYON DRAWS AT NO. 1 HARBOURSIDE'

30 May - 25 July

No. 1 Harbourside, 1 Canon's Road, BRISTOL, BS1 5UH. Monday and Tuesday 4 - 11pm, Wednesday and Thursday 12noon - 11pm, Friday 12noon - 1am, Saturday 10am - 1am, Sunday 10am - 8pm. lisamalyondraws.co.uk.



CLIFFLAND
VANESSA GARDINER
Recent paintings & drawings
Furniture: Petter Southall
Continues until 8 May 2022

CAFÉ SLADERS
Seafood & Vegetarian Restaurant/Café

SLADERS YARD
Contemporary Art, Furniture & Craft Gallery
West Bay Bridport Dorset DT6 4EL
gallery@sladersyard.co.uk t: 01308 459511
View all artworks at sladersyard.co.uk
Open Wednesday - Saturday 10am - 5pm



Above: Janette Kerr Night Ice oil on board 57 x 57cm
Left: Vanessa Gardiner Vertical Coast 14 72 x 34 cm acrylic on plywood

SOLO SHOWS
JANETTE KERR
A thousand kilometres between -
from Shetland to Skagaströnd
GABRIELE KOCH ceramics
PETTER SOUTHALL furniture
Saturday 14 May - 2 July 2022
GROUP SHOW
Sladers' Selected Dorset Artists
DAVID ATKINS • JULIAN BAILEY
MARTYN BREWSTER
VANESSA GARDINER
BRIAN GRAHAM
FRANCES HATCH
ALEX LOWERY
Dorset Art Weeks Venue No. 211

WESSEX FESTIVALS GUIDE 2022

EVOLVER MAGAZINE PULL-OUT SUPPLEMENT

BRUCE MUNRO (MARSTON PARK)



Wessex Festivals Guide 2022



THE SIDMOUTH FOLK FESTIVAL
29TH JULY - 5TH AUGUST 2022

Kate Rusby • Show of Hands
The Spooky Men's Chorale
Eddi Reader • Martin & Eliza Carthy • Blowzabella

Pre Festival Thursday 28 July Steeleye Span
Friday 29 July Fisherman's Friends

Spiers & Boden • Peatbog Faeries • Edward II
Martin Simpson • Grace Petrie • Daoiri Farrell
Yves Lambert Trio • Melrose Quartet
Centralbal • Matt Cranitch & Jackie Daly
Jackie Oates & John Spiers • Chris Wood • Fara
Jez Lowe • Will Pound & Jenn Butterworth
John Kirkpatrick • Alistair Anderson • Sheelanagig
Granny's Attic • Mairead Green & Anna Massie
Emily Portman & Rob Harbron • Ryan Young
Miranda Sykes & Hannah Martin • Jim Causley
Jack Rutter • Cohen Braithwaite-Kilcoyne
Rosie Hood Band • Pedler // Russell • Moirai
Hannah Sanders & Ben Savage
... and many more

*A festival with a view:
a seaside town set in majestic
red cliffs and a lush green valley*

Great Value Tickets available now

English Folk SIDMOUTH www.sidmouthfolkfestival.co.uk
or call the Box Office 01395 577952 folk radio AFO



TENEBRAE

Purbeck Art Weeks

"PAW Festival celebrates all forms of art, music and even outdoor dance theatre. Artists across Purbeck are looking forward to welcoming visitors to their Open Studios, and to the PAW collective exhibition at Rollington Barn (near Corfe Castle), where around 100 artists will be showing at least one piece of art each. It's a great place to plan your art trail over coffee, cakes or a light lunch in the Courtyard Café. Purbeck's Young Artists' workshop creations will be on show in the adjacent byre, and at the other end you will be able to see how the Renewal Tree installation has evolved. New this year is a pop-up demonstration tent, where various artists will be sharing their trade secrets! A stellar selection of world class musicians is on offer - The Gabrieli Consort & Players open the Festival with Bach, followed by the Monteverdi String Band plus Hannah Ely. Inner City Brass are back by popular demand, and new to PAW are the amazing Tenebrae."

28 May - 12 June: Various venues across THE ISLE OF PURBECK, Dorset. 07534 621473 / purbeckartsweeksfestival.co.uk



The Dorset Arts & Crafts Showcase 2022

Friday 5th - Tuesday 9th August
Open 10am - 5pm, Tues 10am - 4pm

Display & Sales of Work by Members of DACA
Open Fine Art, Craft & Photography Competitions
Guest Exhibitions
Children's Workshops
Craft Stalls
Demonstrations

Purbeck School, Worgret Road
Wareham BH20 4PF

www.dorsetartsandcrafts.org
Registered Charity 306252

SHERBORNE ABBEY FESTIVAL

29 April - 6 May

Sherborne Abbey, SHERBORNE, Dorset. sherborneabbeyfestival.org / 01935 815341. "Annual celebration of music, from opera, choral and classical music to jazz, swing and more!"

LYME REGIS FOSSIL FESTIVAL

30 April - 1 May

Various venues in and around LYME REGIS, Dorset. fossilfestival.com / 01297 445021. "Enjoy one of Dorset's largest science festivals. Find out all about the amazing Jurassic Coast with talks, walks and incredible interactive activities."

CLOTH ROAD ARTS WEEK

30 April - 8 May

Locations in and around TROWBRIDGE, BRADFORD ON AVON, and MELKSHAM, Wiltshire. clothroadartists.com. "Nine day visual feast in the form of an art trail, celebrating the superb creativity of talented local artists and artisans. Visit galleries, workshops and individual makers' studios, where artists will be delighted to meet you."

CHEDDAR ARTS FRINGE FESTIVAL

30 April - 2 May

The Arts Quarter, The Lippiatt, CHEDDAR, BS27 3QP. 10.30am - 4pm. cheddarsrtists.co.uk. "Art trail featuring 40 artists in 13 venues."

WE RISE

6 - 8 May

Marston Park, Tuckmarsh Lane, FROME, BA11 5BP. 01373 489000 / marstonpark.co.uk. "A weekend celebrating the hottest electronic music, finest wood-fired eats and the most wonderful of wellbeing practitioners."

WIMBORNE LITERARY FESTIVAL

7 - 15 May

Various venues in WIMBORNE, Dorset. wimbourneliteraryfestival.co.uk.

THE BATH FESTIVAL

13 - 21 May

Various locations in BATH. bathfestivals.org.uk.

EAST QUAY OPEN STUDIOS: 'BLUE'

13 - 22 May

East Quay, WATCHET, TA23 0AQ. 10am - 4pm. 01984 263103.

FABULOUS FAMILY FUN DAY 8

14 May

Salisbury Rugby Club, Castle Road, SALISBURY, SP1 3SA. 12noon - 10pm. 01722 325317. "A one-day festival, raising money for Salisbury Hospice. Live music, beer festival and much more."

DORSET ART WEEKS

14 - 29 May

Locations throughout DORSET. See pull-out supplement.

Wessex Festivals Guide 2022

INCREASE THE PEACE

21 May

Sea Road, BOSCOMBE, BH5. 12noon - 3am. £13.50 / £8 / £5. 07852 769168. "Live music, DJs, poetry and more."

BEAR FLAT ARTISTS OPEN STUDIOS

21 and 22 May

Various locations, Bear Flat, BATH, BA2. 11am - 6pm. bearflatartists.co.uk. "More than thirty artists open their studio doors to welcome visitors. Discover a hive of creativity and buy direct."

SEA CHANGE FESTIVAL

24 - 26 May

TOTNES, Devon. seachangefestival.co.uk. "New and exciting music, art, film, literature, conversation and culture."

SHINDIG FESTIVAL

26 - 29 May

Dillington Park Estate, near ILMINSTER, Somerset. shindigfestival.co.uk. "The funkiest festival in the West Country, Shindig offers a soulful dose of relaxation and revelry to funky warriors and their families."

CHIPPENHAM FOLK FESTIVAL

27 - 29 May

The Cause Music and Arts Centre, The Causeway, CHIPPENHAM, SN15 3DD. chippfolk.co.uk / 01249 657190. "Line-up includes Kathryn Roberts & Sean Lakeman, Belshazzar's Feast, and 3 Daft Monkeys."

BATH FRINGE FESTIVAL

27 May - 12 June

Locations throughout BATH. bathfringe.co.uk. "17 days of free events, music, comedy, theatre, visual arts, outdoor arts, and the utterly unclassifiable."

DOT TO DOT

28 May

Various venues, BRISTOL. dottodotfestival.co.uk.

MILL FARM FOLK FESTIVAL

28 May

Mill Farm, BRADFORD ABBAS, Sherborne, DT9 6RE. 11.30am - 11pm. £15. 01935 414778 / millfarmdorset.com. "A family friendly festival day out featuring some of the very best local folk acts in the South West."

UPFEST

28 and 29 May

Tobacco Factory, Southville, BRISTOL, BS3 1TF. 0117 330 5877 / upfest.co.uk. "The streets of Bedminster in South Bristol will be transformed by street art's biggest talents for an unforgettable weekend of live painting."



KATE RUSBY

Sidmouth Folk Festival

"There's an outstanding line-up of shows, dance performances, workshops, ceilidhs and entertainment for all ages that builds on the ongoing success of England's most resilient of folk gatherings that's been running since 1955. Flexible options mean people can choose to immerse themselves in the whole festival, or buy tickets for specific events only. Headline shows feature the best in contemporary folk music with Kate Rusby, Show of Hands, The Spooky Men's Chorale, Eddi Reader, Spiers and Boden, the Yves Lambert Trio, Fara and Jez Lowe, with pre-festival concerts from Steeleye Span and The Fisherman's Friends. The festival will also feature a unique concert honouring one of the true greats of the traditional music world - the late, great Norma Waterson, who died earlier this year, aged 82. Led by her husband and festival patron Martin Carthy, and daughter Eliza Carthy, the show will also feature the talents of friends and admirers, including Martin Simpson, John Kirkpatrick, Emily Portman, Sandra Kerr, Jim Causley, Jo Freya, Fi Fraser, Saul Rose and David Delarre."

29 July - 5 August: Various locations in SIDMOUTH, Devon. 01395 577952 / sidmouthfolkfestival.co.uk.

LOVE SAVES THE DAY

2 and 3 June

Ashton Court Estate, Long Ashton, BRISTOL, BS4 9JN. 0117 941 1611 / lovesavestheday.org. "Bristol's biggest music festival is back for its 10th year taking place over the Jubilee weekend. This landmark anniversary of the festival is going to be the biggest and best yet with a stellar line-up of international artists."

CURSUS CIDER & MUSIC FESTIVAL

2 - 5 June

Canada Farm, SIXPENNY HANDLEY, Dorset, SP5 5RX. £79 / £5. cursusfestival.com. "Small, friendly bank holiday weekend festival featuring live acts and DJs on the beautiful Cranborne Chase."

JAZZ JURASSICA

2 - 5 June

Marine Theatre and seafront, LYME REGIS, DT7 3BG. 01297 442394 / jazzjurassica.co.uk. "Four day festival of cool jazz, gritty blues and sassy soul on the sunny Dorset coast."

YEOVIL CELEBRATES THE QUEEN'S PLATINUM JUBILEE!

3 June

Yeovil Recreation Ground, off Chilton Grove, YEOVIL, BA21 4AW. 12noon - 10pm. 01935 382424 / yeovil.gov.uk. "Music by brilliant regional bands, performances by talented local community groups, good food, bars, community stalls, activities and entertainment. Enjoy, relax and celebrate!"

WESSEX FOLK FESTIVAL

3 - 5 June

Trinity Road, WEYMOUTH, DT4 8TJ. wessexfolkfestival.com. "A weekend of free music and dance around the Weymouth Quayside with stage performances in Hope Square on Sunday, followed by a ceilidh."

ART WEEK EXETER

6 - 12 June

Various locations in EXETER. artweekexeter.org.uk.

BRISTOL CRAFT BEER FESTIVAL

10 and 11 June

Lloyds Amphitheatre, Explore Lane, BRISTOL, BS1 5LL. 020 7099 4132 / bristolcraftbeerfestival.co.uk.

WIMBORNE MINSTER FOLK FESTIVAL

10 - 12 June

Various locations in WIMBORNE MINSTER, Dorset. wimbournefolk.co.uk. "Morris dancers, music, and more!"

HOME FARM FEST

10 - 12 June

Home Farm, CHILTHORNE DOMER, near Yeovil, Somerset, BA22 8RD. homefarmfest.co.uk.

GREEN SCYTHE FAIR

12 June

Thorney Lakes, THORNEY, Langport, TA10 0DW. £15. greenfair.org.uk. "Family event exploring positive solutions to the climate crisis."

BRIDPORT FOOD FESTIVAL

12 - 24 June

Various venues in and around BRIDPORT. bridportfoodfestival.co.uk.

CHESIL ROCKS

16 - 18 June

Higher Farmhouse, LANGTON HERRING, Dorset, DT3 4JD. chesilrocks.com.

TEIGNMOUTH FOLK FESTIVAL

17 - 19 June

Various venues in TEIGNMOUTH, South Devon. 01803 290427 / teignmouthfolk.co.uk.

CRAFT FESTIVAL

17 - 19 June

Mill Marsh Park, BOVEY TRACEY, Devon, TQ13 9AL. craftsatboveytracey.co.uk. "One of the UK's most prestigious and much loved craft events, featuring over 200 of the UK's finest makers."

PETHERTON FOLK FEST

18 June

Various locations in SOUTH PETHERTON, Somerset. 10am - 6pm. pethertonfolkfest.org.uk.

Follow **EVOLVER** MAGAZINE on Instagram





CLAUDIA ANTONIUS AND JÖRG JOZWIAK 'TYROLIAMUNDUS'

B-Side Festival

"Love new experiences, exploring rugged landscapes, breath-taking coastlines and brand-new contemporary art that you won't see anywhere else? You are in luck, b-side festival is back again this year and we are ready to welcome you to Portland, Dorset to celebrate this awe-inspiring island. Join us on an unforgettable journey around Portland, with artworks created for this special Isle that explore the theme of Common Lands. As ever there will be a warm welcome, a host of films, workshops, performances, walks and tours and some pop-up surprises to keep you on your toes. Full programme and festival artists will be announced in June."

8 - 11 September: Various locations on PORTLAND, Dorset.
b-side.org.uk.



Yeovil celebrates The Queen's Platinum Jubilee!

FREE COMMUNITY EVENT

Friday 3 June 2022
at Yeovil Recreation Ground

ELECTRIC PEACH • TOM & THE CLEMENTYNES
LIVEWIRED • THE IOUS • THE DALE FENDER BAND
THE DISCIPLES • YEOVIL UKULELE CLUB
MARCUS SANGIOVANNI • THE OCTAGON CHOIR
HMS HERON ROYAL NAVY VOLUNTEER BAND

12noon until 10pm



YEOVIL TOWN COUNCIL

WIDCOMBE ART TRAIL

18 and 19 June
Various locations in WIDCOMBE,
Bath, BA2 6AA.
widcombeartrail.com.

BS9 ARTS TRAIL

18 and 19 June
Various locations in WESTBURY-
ON-TRYM, HENLEAZE and STOKE
BISHOP, Bristol, BS9. 11am - 5pm.
bs9arts.co.uk / 07791 488671.

CHALKE VALLEY HISTORY FESTIVAL

20 - 26 June
BROAD CHALKE, near Salisbury,
Wiltshire, SP5 5DP. 01722 781133 /
cvhf.org.uk. "Festival packed with
historical entertainment."

SIDMOUTH LITERARY FESTIVAL

20 - 26 June
Various locations, SIDMOUTH, East
Devon. sidmouthlitfest.co.uk.

BRISTOL SOUNDS

22 - 26 June
Lloyds Amphitheatre, Explore Lane,
BRISTOL, BS1 5LL. facebook.com/
BristolSoundsOfficial. "Bristol's
much-loved open air series of
concerts returns this June with an
eclectic line-up of must-see artists
including Jungle and First Aid Kit."

MARSTONBURY

24 - 26 June
Marston Park, Tuckmarsh Lane,
FROME, BA11 5BP. 01373 489000 /
marstonpark.co.uk. "Fun-lovin' mini
Glastonbury alternative by the
lake."

WEST SOMERSET FOLK FESTIVAL

24 - 26 June
Recreation Hall, CARHAMPTON,
near Minehead, Somerset.
westsomersefolkfestival.co.uk.

HALL AND WOODHOUSE BEER FESTIVAL

25 June
The Hall & Woodhouse Brewery,
BLANDFORD ST MARY, Blandford
Forum, DT11 9LS. 11am - 10pm.
hallwoodhousebeerfest.com. "Real
ales, ciders and perries, live music
and hot food."

WESTON AIR FESTIVAL

25 and 26 June
Weston Super Mare Beach,
WESTON-SUPER-MARE, BS23 1BE.
0117 953 0320 /
westonairfestival.com.

FOLK ON THE QUAY

25 and 26 June
The Quay, POOLE.
folkonthequay.co.uk.

BEAMINSTER FESTIVAL

26 June - 3 July
Various locations, BEAMINSTER,
Dorset. 01308 862943 /
beaminsterfestival.com.

FROME FESTIVAL

1 - 10 July
Various locations throughout
FROME, Somerset.
fromefestival.co.uk / 01373 453889.
"An eclectic mix of opera, pop,
choral, jazz and folk music, theatre,
workshops, exhibitions, films, walks
and talks."

DORSET ART WEEKS 2022

EVOLVER MAGAZINE PULL-OUT SUPPLEMENT

HUGH DUNFORD WOOD (VENUE 198)

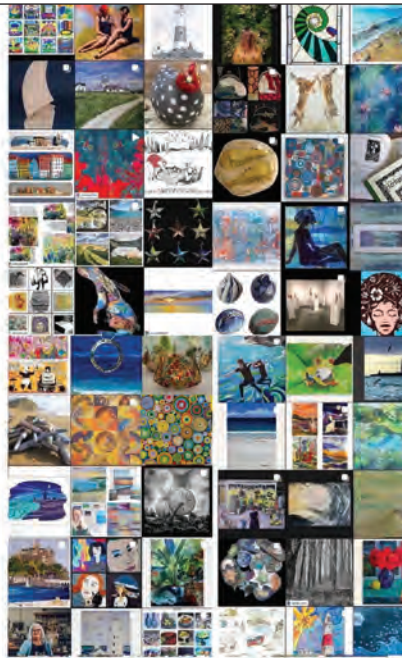




Promoting
Art in our
Community.



@artwey_cic
Artwey.co.uk



VENUES:

126, 149, 153,
156, 165, 167,
168, 171, 172,
173, 174, 175.

14 - 29
May



Artwey is a community of
artists in the Weymouth,
Portland, Dorchester and
Abbotsbury areas.



Great art and
the best coffee



The Slade Centre, The Square, Gillingham, Dorset SP8 4AY
Tuesday - Saturday 9am - 4pm • 07775 431652 • sladecentre.com

CATHY VEALE
PAINTINGS AND PRINTS



OPEN STUDIO
28 May to 12 June

OPEN 10.30-5 MON TO SAT 11.30-5 SUN
GARDEN STUDIO, HARMANS CROSS
Nr CORFECASTLE BH19 3BG
WWW.CATHYVEALE.CO.UK



DAW at Walford Mill

A showcase of all the resident makers at Walford Mill.
Expect to see paintings, prints, textiles, jewellery,
sculpture and a fantastic range of gifts and cards.

Walford Mill Crafts, Knobrook Road, Wimborne, Dorset, BH21 1NL

Open: Wednesday - Saturday 10am - 5pm
Sunday 11am - 4pm

walfordmillcrafts.co.uk



Katy Tunstall
Stoneware Vessels
1st-31st May

THE CREATIVE GALLERY

Showcasing ceramics, paintings, textiles, jewellery and glass by local artists

DORSET
ART
WEEKS
14 - 29 MAY 2022
VENUE 112



PAW
PURBECK ART WEEKS
FESTIVAL
28 May - 12 June
VENUE 25



Anne-Marie
Marshall Fieber
Ceramic Creatures
1st-30th June

St John's Hill, Wareham, Dorset BH20 4NB t 01929 551505 e fiona@creativegallerywareham.co.uk
Open: Monday to Saturday 10am-5pm, then daily from 14th May

Dorset Art Weeks 2022

It is thirty years since the first DORSET ART WEEKS was launched in 1992. In that first year, the list of venues was published on a single sheet of A2 paper but as with 2022, the collective spirit of artists and makers wanting to showcase the best of the county's visual arts was more than apparent. The origin of Dorset Art Weeks came from an initial suggestion by John Makepeace, to the county librarian, Carl Earl, and developed by the county's visual arts officer, Joanna Morland, who formed a steering group for the event. The intense collaborative energy of artists and craftspeople creating work, opening studios and organising group shows continues. After the past couple of years, Dorset Art Weeks, and the creative community which sustains it, continues to thrive and evolve - something to be celebrated!

This year's event follows on from last year's rescheduled event. Visitors to Dorset Art Weeks 2022 can look forward to re-discovering an exciting variety of artist studios and exhibitions in unique locations and beautiful settings, and finding out what the county's creatives have been up to during such an extraordinary time. There's a huge amount to see this year with over 250 venues taking part, and more ways than ever to engage with the event, including open studios, public art trails and group shows from a vibrant community of artists, galleries and public spaces.

Use the free Dorset Art Weeks Directory in conjunction with the DAW website and DAW App, with all of the information needed to plan your venue visits, create an art trail and discover more about the county's artists, curators and galleries, including special exhibitions and activities which will feature in this year's event.

The Directory, produced by Evolver Magazine, can be picked up at all Evolver outlets and DAW venues.

Paul Newman

Producer, Dorset Art Weeks 2022



GEORGE PAUL SAINSBURY (VENUE 179)



BJORK HARALDSDOTTIR (VENUE 229)



Sandy Shore by Jayne Cunliffe

BOILERhouse GALLERY

HIGH QUALITY ART AND CRAFT
IN A UNIQUE SETTING

Open every day for both DORSET ART WEEKS
and PURBECK ART WEEKS

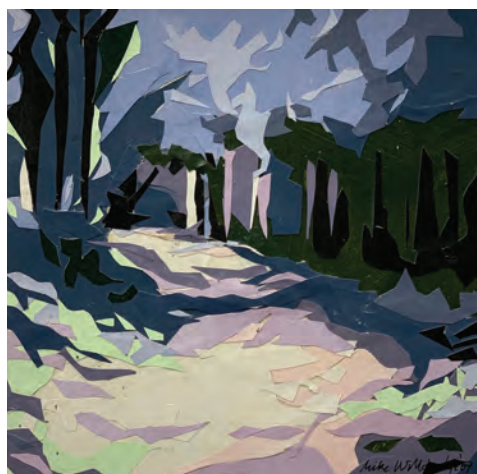
POP-UP CAFE
Check website for details

Sandy Hill Lane, Corfe Castle, Dorset BH20 5JF
boilerhousegallery.co.uk



Grand Orters by Jane Colquhoun

Dorset Art Weeks 2022



MIKE WILLDRIDGE (VENUE 148)



RAPHAEL DADEN (VENUE 160)



MALCOLM GILADJIAN (VENUE 191)



VANESSA BOWMAN (VENUE 2)



JOHN HUBBARD (VENUE 185)



PERCY LIZZARD (VENUE 54)



ANDREW DUMOLO (VENUE 183)



MOIRA HAZEL (VENUE 155)



DIANA WINGATE (VENUE 78)



OUTDOOR CINEMA EVENING!
at THE WALLED GARDEN MORETON
'NOSFERATU' with
LIVE SOUNDTRACK PERFORMANCE!
by The Somnambulists
SATURDAY 21ST MAY - 8:15PM
Booking recommended. Tickets £12.50 | BBQ & Bar available
Free parking on site. Tickets available now on [eventbrite](https://www.eventbrite.co.uk)
Full details on social media and [walledgardenmoreton.co.uk](https://www.walledgardenmoreton.co.uk)
The Walled Garden, Moreton, Dorchester, Dorset, DT2 8RG

Dorset Art Weeks 2022



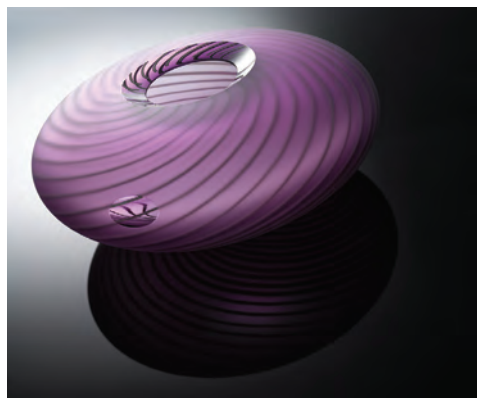
BETHAN VENN (VENUE 46)



GABRIELE KOCH (VENUE 211)



URSULA LEACH (VENUE 89)



NOTARIANNI GLASS (VENUE 144)



GERRY DUDGEON (VENUE 250)



SARAH GEE (VENUE 203)



LAURENCE BELBIN (VENUE 17)



CAROLINE SOER (VENUE 29)



JAMES BUDDEN (VENUE 19)

Between beach & backwater

Explore Weymouth's brand new sculpture trail & special events for Dorset Arts Week

Programme details, info & guide to locations
at visit-dorset.com/weymouth-sculpture-trail

Supported using public funding by
ARTS COUNCIL ENGLAND



VENUE 76

Felice Hodges

Mixed media, painting, sculpture

Abbey House, Witchampton, near Wimborne, BH21 5AG

10am - 5pm (14 - 26 May)

07768 137235 • felicehodes.com



VENUE 72

Heather MacGregor

Drawing, mixed media, painting

2 Gannets Mead,
High Street, Spetisbury,
Blandford Forum,
DT11 9DJ

Friday - Sunday 10am - 5pm

07974 384762

heathermacgregorart.com



VENUE 52

artbynet

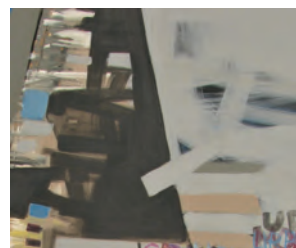
Drawing, mixed media, painting

5 Railway Terrace, Gillingham,
SP8 4JF

11am - 4pm • Appointment only

(Closed Wednesdays)

07534 540570



VENUE 42

Elaine Collett

Drawing, painting, printmaking

10 Fiddleford, Sturminster
Newton, DT10 2BX

11am - 5pm (Closed 23 May)

07787 522597

elainecollett.com



VENUE 90

Les Lees Sculpture

43a Kingston Road, Heckford Park,
Poole, BH15 2LR

10am - 5pm (Closed Weds + Thurs)

07473 996695 • leslees51art.com



VENUE 15

Norrie de Montigny

CERAMIC WALL PIECES

*Clay, oxides and pigments are my tools for structured
playing, my way to keep exploring*

Beech House
Bristol Road
Sherborne
DT9 4HP

10am - 5pm (Closed Mondays)

01935 389933



VENUE 219

Barbara Green

Mixed media, painting, printmaking

Manscombe Abbey, Taylors Lane,
Morcombelake, DT6 6ED

10am - 6pm and by appointment

07510 983057 • barbaragreen.co.uk



VENUE 120

Heather Gibbons

TAKE ANOTHER LOOK

Drawing, painting

The Learning Centre, Durlston
Castle, Swanage, BH19 2JL

11am - 5pm • 01929 426907

heathergibbons.co.uk



VENUE 115

Jane Elmer-Smith and Aline Johnson

Ceramics, pottery, glass, textiles

The Dove House Barn, Grange Road, Creech, BH20 5AL

10am - 5pm (Closed Mondays)

07836 203563 • jesceramics.co.uk • alinejohnson.co.uk



Ruth Piper

Mystery is a vital ingredient in Ruth Piper's dark paintings: 'for a painting to work it needs something which is not really understandable,' both for her and for the viewer. She uses black, or rather Paynes Grey, a rich and subtle matt blue black, with impunity. Her work is rooted in the natural world, a term which she dislikes because of its ubiquity but - in the absence of any other suitable terminology - it expresses what she means. 'The natural world is everywhere, we are part of it we can't separate ourselves from it. Deep down that is what drives me.'

As she wanders on her walks she takes photographs of plant forms, neglected bits of land and weeds poking up through the gaps in pavements. Trees are another passion especially trees in winter when the branches are 'naked' and not hidden by leaves. Her least favourite time of year for observing trees is full summer when the leaves mask their shapes.

Gathering her observational photographs she prints them on A4 size paper and piles them up on her studio table. They become her point of reference to which she adds her memories and as she works she dips into the suggestions that the painting itself makes. Sometimes things emerge, a face, eyes or more amorphous unnamed plant forms. She feels the need for her paintings to have something 'unnerving' about them, a sense of nameless fear, without which she feels that they are not doing what she is asking of them. These melancholy paintings are rooted in her meditations on imaginary landscape, gifting them a hint of Romanticism

Acrylic paints are Piper's media of choice because they suit the way that she works. She finds the uneven drying time scales of oils depending on individual colours too restricting. Acrylics dry quickly so she can return to a painting day after day without waiting for the surface to dry. She layers colours fairly thinly, often starting with a Paynes Grey surface onto which she puts down other colours: pinks, oranges or blues - washing them away so that they reveal subtle shifts of hue that rise to the surface.

Her working method owes much to watercolour technique, a medium that she loves. Green is one of her most used colours in all its different combinations and she uses proprietary greens as well as mixing them. She revels in the acid green you get when you mix Azure Blue with Lemon Yellow - perfect for springtime.



'ARCADIAN' (Acrylic on canvas, 90 x 95 cm)

During lockdown, following the serendipitous gift of a piece of cake, she opened out the packaging it was in and used that as a surface on which to paint. More sandwich box shaped paintings followed, ten in all, until the sandwich shop changed the composition of the inner surface of their boxes so they did not accept the paint. These small paintings, so rooted in that strange time, took as long to make as a large painting and there is something quite poignant about the short series of work.



'RESISTANCE' (Acrylic on canvas, 124 x 120 cm)

Her choice of influences is eclectic. John Currin, Peter Doig, Paula Rego's drawings and Francis Bacon - she feels a chill looking at much of his work. The citing of Bonnard seems a little more surprising but she finds the paintings of his wife in the bath unsettling. The stillness in Mary Potter's restrained palette is another favourite source.

Piper's concerns about the state of the world and the future or our environment manifest themselves in her work. Books like Cormac McCarthy's *The Road* with its unspeakably bleak vision contribute to her sense that we as human beings are squandering our fragile inheritance and destroying everything in the natural world.

Fiona Robinson

VENUE 194: Bridport Contemporary Gallery, 11 Downes Street, BRIDPORT, DT6 3JR. 10am - 5pm (Closed Mondays and Wednesdays). 07983 465789 / bridportcontemporary.com.

ruthpiper.com



VENUE 24

Robert Woolner

MIXED MEDIA, PAINTING

Chantry Cottage, Glanvilles Wootton, Sherborne, DT9 5QJ

11am - 5pm (14, 15, 16, 20, 21, 22, 27, 28, 29 May)

and by appointment

07837 719511 • robwoolner.com



VENUE 54

Percy Lizzard

THE NEW PAINTINGS

Lizzard Gallery, White House Farm, Shaftesbury Road,
Motcombe, Shaftesbury, SP7 9NR

Open every day 10am - 4pm • 07979 590790 • percyizzard.art



Pick up a
Directory

DORSET
ART
WEEKS
14 - 29 MAY 2022



Download
the **App**

dorsetartweeks.co.uk



Follow us on Facebook, Instagram and Twitter

#dorsetartweeks

DORSET VISUAL ARTS

Wessex Festivals Guide 2022

FROME OPEN ART TRAIL

2 - 10 July

Various locations in and around FROME, Somerset. 11am - 5pm. 07966 300293 / frome-open-art-trail.co.uk. "Local artists offering beautiful arts and crafts from their homes or venues."

MARLBOROUGH OPEN STUDIOS

2 - 24 July

Locations in and around MARLBOROUGH, Wiltshire. marlboroughopenstudios.co.uk.

EXETER CRAFT FESTIVAL

7 - 9 July

Exeter Cathedral, EXETER. exetercraftfestival.co.uk. "A three day celebration of the very best artists and makers based in the South West."

SWANAGE JAZZ FESTIVAL

8 - 10 July

Various locations in and around SWANAGE, Dorset. swanagejazzfestival.co.uk. "Line-up includes The Alan Barnes Octet, Nigel Price with his Wes Reimagined project, Art Themen's New Directions Quintet, Greg Abate, and new rising stars like Xhosa Cole, Alex Clarke Quartet, Mark Kavuma and Jo Harrop."

THE SOUND OF THE STREETS

8 - 10 July

Castle Green and Goodlands Gardens, TAUNTON. Free entry. thesoundofthestreets.com. "Some of the biggest names in street music are coming to Taunton! Join us for three glorious days of music and celebration."

BUDLEIGH MUSIC FESTIVAL

8 - 16 July

BUDLEIGH SALTERTON, Devon. budleighmusicfestival.co.uk.

SOMERSTOCK

9 July

Recreation Ground, SOMERTON, Somerset. somerstock.com. "One-day family-friendly music festival."

BRIDGWATER QUAYSIDE FESTIVAL

9 July

Various locations in BRIDGWATER. 11am - 5pm. bridgewaterquaysidefestival.co.uk.



GRAZYNA WIKIERSKA 'FLYING GIRL' (Feathers, bodypaint)

Somerset Art Weeks Festival

"Somerset Art Weeks Festival returns this autumn with the theme 'Sanctuary'. With venues hosting group exhibitions, curated shows and events from SAW members and invited artists, it's also a showcase for SAW-supported projects, special commissions and new work from bursary artists."

24 September - 9 October: Locations throughout SOMERSET. somersetartworks.org.uk.

THE GODNEY GATHERING

15 and 16 July

Garslade Farm, GODNEY, Glastonbury, BA5 1RX. thegodneygathering.com.

BRISTOL HARBOUR FESTIVAL

15 - 17 July

Harbourside, BRISTOL, BS1. 0117 927 6614 / bristolharbourfestival.co.uk. "Back for its 50th anniversary and it's going to be a memorable evening for Bristol! Family activities, circus performers, delicious food stalls, visiting vessels and live music across all the stages on Bristol's waterfront."

SOHO RADIO WEEKENDER

15 - 17 July

Marston Park, Tuckmarsh Lane, FROME, BA11 5BP. 01373 489000 / marstonpark.co.uk. "Soho Radio is breaking out of London and New York for a summer broadcast party live from Marston Park!"

TOLPUDDLE MARTYRS' FESTIVAL

15 - 17 July

TOLPUDDLE, Dorset. tolpuddlemartyrs.org.uk. "Annual festival to commemorate the bravery of the martyrs' struggle, featuring music, speakers and family entertainment."

CHAGSTOCK FESTIVAL

22 and 23 July

Whiddon Down, near CHAGFORD, Devon. chagstock.info.

BRIDPORT FOLK FESTIVAL

22 - 24 July

Various locations, BRIDPORT, Dorset. 07796 000205 / bridportfolkfestival.com. "Music, dancing, music sessions, workshops, food, stalls, bands, lots to see and hear!"

WILKSWOOD REGGAE FESTIVAL

22 - 24 July

Wilkswood Farm, High Street, LANGTON MATRAVERS, BH19 3HD. £120 / £50. wilkswoodrootsreggaefestival.co.uk.

SHAFTESBURY FRINGE

22 - 24 July

Various locations in SHAFTESBURY, Dorset. shaftesburyfringe.co.uk. "Music, comedy, dance, theatre and everything in between!"

DORSET OPERA FESTIVAL

25 - 30 July

Coade Theatre, Bryanston School, Bryanston, BLANDFORD FORUM, Dorset, DT11 0PX. 2 and 7pm. £110 / £40. 07570 366186 / dorsetopera.com. "The home of Country House opera in Southwest England welcomes renowned soloists, a full orchestra and chorus. This year's operas are Puccini's gloriously harrowing 'Manon Lescaut' and Mozart's evergreen, 'Magic Flute'."

ALTITUDE

28 - 30 July

BLACKBOROUGH, Devon, EX15 2HJ. 07763 531733 / altitudedevon.com. "The little festival with the big heart is back for its 6th year!"

CAMP BESTIVAL

28 - 31 July

Lulworth Castle, LULWORTH, Dorset. campbestival.net.

WOMAD

28 - 31 July

Charlton Park, near MALMESBURY, Wiltshire. womad.co.uk.

SIREN

29 and 30 July

Lloyds Amphitheatre, Explore Lane, BRISTOL, BS1 5LL. sirenbristol.com.



The
Edington Music Festival
A Festival of Music within the Liturgy

We're back! The 65th festival

21st - 28th August 2022

Creation and Recreation

Director: Robert Quinney

Music includes

Vaughan Williams *Mass in G*

Copland, Dove

Michael Haydn *Requiem*

Matins & Compline plainchant

edingtonfestival.org • info@edingtonfestival.org

FROME

Open

*** ART ***

TRAIL

2022

2nd - 10th July

11am - 5pm



FOR MORE INFORMATION
www.frome-open-art-trail.



FROME
FESTIVAL

FARMFEST

29 and 30 July

Gilcombe Farm Gilcombe, BRUTON, BA10 0QE. farmfestival.co.uk.

"Featuring over 100 acts in the electronic, indie, folk, and world music genres, Farmfest manages to brilliantly combine everything from early morning workouts to lively kids workshops, riotous jumbles of jazz, brass-based bonanzas, stand-up comedy, and poetry."

FIELDS OF FANTASY

29 - 31 July

Secret location on outskirts of BRISTOL. Friday 12noon - Sunday 12midnight. £110.

fieldsoffantasyfestival.com. "Three days of hedonism surrounded by natural beauty."

MUDEFORD ARTS FESTIVAL

30 and 31 July

Quay Green, MUDEFORD, Christchurch, BH23 4AB. 11am - 5pm. 0758 594 2805 / mudfordartsfestival.org.uk. "Arts, crafts, food and entertainment."

OUTCIDER FESTIVAL

4 - 7 August

Fernhill Farm, COMPTON MARTIN, Bristol, BS40 6LD. outciderfestival.com. "Two alternating stages host 40 original acts including The Dreadnoughts, Undercover Hippy, Da Fuchaman, Crazy Arm, and Skimmity Hitches. Lots of cider and lots of fun."

THE DORSET ARTS & CRAFTS SHOWCASE

5 - 9 August

The Purbeck School, Worgret Road, WAREHAM, BH20 4PF. 10am - 5pm. 01202 394101 / dorsetartsandcrafts.org. "Work by members of DACA, open competitions, guest exhibitions, children's workshops, craft stalls and demonstrations."

BRISTOL INTERNATIONAL BALLOON FIESTA

11 - 14 August

Ashton Court Estate, BRISTOL, BS4 9JN. 0117 904 6509 / bristolballoonfiesta.co.uk. "Europe's largest annual hot air balloon festival."



MANRAN

Priddy Folk Festival

"Set in a drop-dead-gorgeous location high up on the Mendip Hills, yet only half an hour from Bristol and Bath, this family-friendly festival is now in its 30th year. Headliners include Jiggy, Manran and De Temps Antan with over 20 other bands booked so far covering a wide range of the traditional and emerging folk scene. As well as ticketed events, there are free children's and dance festivals, the popular Fringe, guided walks, and arts and craft demonstrations. Add a great selection of food and drink stalls, camping and a really friendly vibe, and you will find yourself wanting to return year after year."

8 - 10 July: Village Green, PRIDDY, BA5 3BB. £124 / £106. priddyfolk.org

BURTON BRADSTOCK FESTIVAL OF MUSIC AND ART

16 - 21 August

Various locations in BURTON BRADSTOCK, Dorset, DT6. burtonbradstockfestival.com / 01308 897203. "Three days of brilliant classical, jazz and world music with internationally acclaimed performers, and a six-day art exhibition."

PURBECK VALLEY FOLK FESTIVAL

18 - 21 August

Purbeck Valley Farm, CORFE CASTLE. purbeckvalleyfolkfestival.co.uk. "Set on a farm on the beautiful Jurassic Coastline, we're a festival that's loved by everyone."

BEAUTIFUL DAYS

19 - 21 August

Escot Park, near OTTERY ST MARY, Devon. beautifuldays.org. "Family music festival featuring 7 stages, amazing site art, a huge children's area, comedy, theatre, family camping, licensed real ale bars and a great choice of food and craft stalls."

WATCHET LIVE

26 - 28 August

WATCHET, Somerset. watchetfestival.co.uk. "Three live stages host more than 60 live acts, bringing a wide range of high-calibre musical acts not normally found performing in West Somerset."

END OF THE ROAD

1 - 4 September

Larmer Tree Gardens, TOLLARD ROYAL, Dorset, SP5 5PY. endoftheroadfestival.com.

LYME FOLK WEEKEND

2 - 4 September

Various venues in LYME REGIS, Dorset. lymefolk.com. "Great music and dancing on the Jurassic Coast."

FORWARDS FESTIVAL

3 and 4 September

Clifton Downs, Stoke Road, BRISTOL, BS9 1FG. 0117 941 1611 / forwardsbristol.co.uk. "New for this year, inner city music festival Forwards comes to Clifton Downs in Bristol this year. The 2-day festival will harness the power of live events to bring people together for incredible music moments and positive change; through social initiatives and a space for discussion and debate. Line-up includes The Chemical Brothers, Jamie XX, Little Simz, Khruangbin, Caribou, Sleaford Mods, Floating Points, Kae Tempest, Kojey Radical, Self Esteem, and Shygirl."

SALISBURY ART TRAIL

3 - 18 September

Various locations in and around SALISBURY, Wiltshire. plainartssalisbury.co.uk/salisbury-art-trail.

SUNSET ON THE WEST

9 - 11 September

Fernhill Farm, COMPTON MARTIN, Bristol, BS40 6LD. sunsetonthewest.com. "Family friendly festival in lush surroundings. Live acts include The Beat, Sound Of The Sirens, and Black Water County."

SWANAGE FOLK FESTIVAL

9 - 11 September

Sandpit Field, SWANAGE. swanagefolkfestival.com. "Concerts, dance displays, dance and music workshops, children's activities, sessions and ceilidh."

DEVON OPEN STUDIOS

10 - 25 September

Locations throughout DEVON. devonartistnetwork.co.uk.

Dates for your diaries

Somerset Art Weeks Festival 2022 24 September - 9 October

somersetartworks.org.uk

SOW
somerset
art works



Julie Meikle



THE MONOCHROME SET

Orchard Popfest

"The Electric Broom Cupboard returns with a new venture, Orchard Popfest, an all-dayer curated by The Chesterfields, featuring music by The Monochrome Set, The June Brides, The Chesterfields, Palooka 5, Helen McCookerybook, The Rhynes, DJs Johnny Dee, Andrew Perry and Alan Flint, plus Vinyl Van record stall, food and bar."

16 July: North Down Farm, near CREWKERNE, TA18 7PL. Gates 12noon, music from 2pm. Tickets from Eventbrite: £20 / under 16s free / camping available. Instagram: orchardpopfest.

BUDLEIGH SALTERTON LITERARY FESTIVAL

14 - 18 September

Locations in and around BUDLEIGH SALTERTON, Devon. budlitfest.org.uk.

YEOVIL SUPER SATURDAY

17 September

Town Centre, YEOVIL. 10am - 4pm. 01935 382424 / yeovil.gov.uk. "Yeovil town centre comes alive with music, crafts, entertainment, community stalls and much more. Buskstops throughout the town showcase talent and provide a musical backdrop to a fantastic community day."

ENCOUNTERS

27 September - 2 October

Watershed, BRISTOL. encounters-festival.org.uk. "The UK's leading short film festival, bringing you the best in international short film, animation, and virtual reality."

MARLBOROUGH LITERATURE FESTIVAL

29 September - 2 October

Various locations in MARLBOROUGH, Wiltshire. marlboroughlitfest.org.

BOURNEMOUTH ARTS BY THE SEA FESTIVAL

30 September - 2 October

City Centre, BOURNEMOUTH. artsbythesea.co.uk. "An inspirational and diverse carnivalesque celebration of the arts featuring 100 unique thought provoking performances, installations and artistic endeavours all in the heart of Bournemouth."

TWO MOORS FESTIVAL:

DARTMOOR

5 - 9 October

Various locations on DARTMOOR. twomoorsfestival.co.uk. "The Two Moors Festival 2022 is based on the theme of 'Friendship', in particular between the Schumanns, Schubert, Beethoven, Mendelssohn and Brahms."

SWANAGE BLUES FESTIVAL

6 - 9 October

Locations in and around SWANAGE, Dorset. swanage-blues.org. "The Swanage Blues Festival brings together an amazing collection of musicians, fans and friends for a weekend of jams, open mics and headline performances."

TWO MOORS FESTIVAL: EXMOOR

13 - 15 October

Various locations on EXMOOR. twomoorsfestival.co.uk. See 5 - 9 October.

WELLS FESTIVAL OF LITERATURE

14 - 22 October

Cedars Hall, The Liberty, WELLS, BA5 2ST. 0300 2010211 / wellsfestivalofliterature.org.uk. "WFL celebrates its 30th anniversary this year with a bumper nine days planned."

CAM VALLEY ARTS TRAIL

5 and 6 November

Various locations, CAM VALLEY, BA2. 11am - 4pm. 07763 218176 / camvalleyartstrail.co.uk. "Local, original art and craft works at affordable prices."

SHIINE ON WEEKENDER

11 - 13 November

Butlins, MINEHEAD. shiiineon.com.

THE DORSET OPERA FESTIVAL M M X X I I

The home of Country House opera in South West England featuring renowned soloists and full orchestra

Marquee Bar | Picnics | Formal Dining

Giacomo Puccini

MANON LESCAUT

25, 28, 30 July at 19:00 | Matinée 27 July at 14:00

Sung in Italian with English surtitles

Wolfgang Amadeus Mozart THE MAGIC FLUTE

26, 27, 29 July at 19:00 | Matinée 30 July at 14:00

Sung in English with surtitles

Coade Theatre, Bryanston,
Blandford Forum

Box Office:

dorsetopera.com
07570 366 186



SALISBURY INTERNATIONAL ARTS FESTIVAL | 27 MAY–18 JUNE
PART OF WILTSHIRE CREATIVE **2022**



DISCOVER MUSIC



Tickets: 01722 320 333
wiltshirecreative.co.uk

Major Sponsor **Wilsons Solicitors**

PAW 
PURBECK ART WEEKS Festival



28 May – 12 June
Open studios | Exhibitions | Events

For more information and event ticket sales visit
www.purbeckartweeksfestival.co.uk



 **b-side**

1000 IDEAS, ONE AMAZING ISLAND
FESTIVAL 2022
ART | FILM | PERFORMANCE | DIGITAL

08–11 SEPTEMBER
PORTLAND, DORSET
b-side.org.uk

 Supported using public funding by **ARTS COUNCIL ENGLAND**

 **Dorset Council**

 **PENNSYLVANIA CASTLE ESTATE**
Isle of Portland

 Made possible with **Heritage Fund**

Funded by **BRITISH COUNCIL**

Visual Arts

ALEX ROCH: 'NEW HORIZONS'

1 - 7 June

The Gallery, Shaftesbury Arts Centre, Bell Street, SHAFTESBURY, SP7 8AR. Monday - Saturday 10am - 4pm. shaftesburyartscentre.org.uk.

ANNE-MARIE MARSHALL FIEBER

1 - 30 June

The Creative Gallery, St John's Hill, WAREHAM, BH20 4NB. Monday - Saturday 10am - 5pm. 01929 551505. *"Creatures created in clay."*

EAST DORSET POTTERS

1 June - 3 July

Walford Mill Crafts, Knobcrook Road, WIMBORNE, BH21 1NL. Wednesday - Saturday 10am - 5pm, Sunday 11am - 4pm. 07979 812083 / eastdorsetpotters.com.

'THE ELEMENTS'

2 - 13 June

The Gallery Upstairs, Upton Country Park, Poole Road, POOLE, BH17 7BJ. 10am - 5pm. 01202 775304. *Textiles.*

BRISTOL 1904 ARTS SOCIETY

3 - 12 June

The Red Lodge, Park Row, BRISTOL, BS1 5LJ. 10am - 4.30pm. bristol1904arts.org. *"Founded in 1904, the Society has artistic roots running deep into Bristol's cultural history. This will be the 111th annual paintings exhibition, showcasing the best of our artists' work and set in their iconic hall, built in the style of an old tithe barn."*

'PERSPECTIVES'

8 - 14 June

The Gallery, Shaftesbury Arts Centre, Bell Street, SHAFTESBURY, SP7 8AR. Monday - Saturday 10am - 4pm. shaftesburyartscentre.org.uk. *"Paintings by Helen Baddeley, Brady Turner, and Jane Barnard."*

'INTUITIVE SPACES'

10 - 22 June

Centrespace Gallery, 6 Leonard Lane, BRISTOL, BS1 1EA. 10am - 6pm. 07812 045074 / id-artists.com. *"Work that comments on physical and emotional spaces, exploring the intuitive spaces between the various disciplines of artists Sara Parsons, Gail Mason, Tina Hill, Vicki Campbell, Stephanie Wooster, and Dawn Mason."*

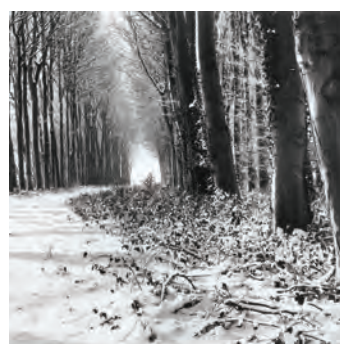


'UNFRAMED'

Giles Penny: The Art of Being

"Giles Penny is best known for his sculptural works that often have an innocent humorous nature, inspired by everyday domestic events such as hovering, washing up, cooking etc. The exhibition comprises of 30 sculptures and various 2D works on the walls."

14 - 31 May: The Jerram Gallery, Half Moon Street, SHERBORNE, DT9 3LN. Tuesday - Saturday 9.30am - 5pm. 01935 815261 / jerramgallery.com.



'FOREST BATHING'

11 and 12 June

Hours, 10 Colston Yard, BRISTOL, BS1 5BD. 11am - 6pm. 07766 054659 / hours-space.com.

'COLOURS OF DORSET'

11 - 19 June

St Peters Church, Mount Lane, EYPE, Bridport, DT6 6AR. 10am - 4pm. 07958 756368 / carolineliddingtonart.com / lynnegrace.co.uk. *"Caroline Liddington and Lynne Grace present their annual exhibition celebrating the joy of colour within Dorset coastal landscapes, interiors, objects and sea."*

GARY COOK: 'WEND - THE STOUR FROM SOURCE TO SEA'

11 June - 9 July

The Art Stable, CHILD OKEFORD, near Blandford, DT11 8HB. Thursday - Saturday 10am - 3pm. 01258 863866 / theartstable.co.uk.

'THE EACHAIG'

15 - 21 June

The Gallery, Shaftesbury Arts Centre, Bell Street, SHAFTESBURY, SP7 8AR. Monday - Saturday 10am - 4pm. shaftesburyartscentre.org.uk.

'PICTURES OUT OF A RUCKSACK'

16 - 27 June

The Gallery Upstairs, Upton Country Park, Poole Road, POOLE, BH17 7BJ. 10am - 5pm. 01202 775304 / thegalleryupstairs.org.uk. *Drawings and prints by Tom Marshall.*

JESSICA GALE: 'EARTH SONGS'

17 - 19 June

The Old Chapel, High Street, ASHMORE, SP5 5AE. 10am - 4pm. jessicagalefineart.com.

Calling all artists!

EVOLVER PRIZE 2022

First Prize £1,000 + Evolver Magazine 126 Front Cover

See page 25



CALL FOR ENTRIES

ILMINSTER OPEN EXHIBITION 2022

12 JULY - 5 AUGUST

Cash Prizes | Emerging Artist Prize: Ages 17 - 25 | Prizewinners Exhibition

DEADLINE FOR ENTRIES 11 JUNE

For more information visit ilminsterartscentre.com or contact artscentreopen@gmail.com

ILMINSTER arts centre AT THE MEETING HOUSE

SCW somerset art works

Sponsored by **BRANSTON**

Visual Arts



Moish Sokal: Postcards from Kenya

"New work inspired by a recent trip to Kenya showing the wild animal kingdom and its people in contrast to local scenes of peaceful Somerset."

4 June - 23 July: Malthouse Gallery, East Lambrook Manor Gardens, Silver Street, EAST LAMBROOK, South Petherton, TA13 5HH. Tuesday - Saturday 10am - 5pm. 01935 881350 / moishsokal.co.uk.

black swan arts open 2022

exhibition
15 July - 11 September

call for entries
closing date: 2 June

amazing prizes, top art industry judges
submit online: www.blackswanarts.org.uk/open

thanks to our sponsors: HAUSER & WIRTH SOMERSET, ROLLO LOTTE, SOUTHWEST, M.Y., RISING ARTS AGENCY, BRUCE MUNRO STUDIOS, BLACK SWAN ARTS

www.blackswanarts.org.uk
Registered Charity No. 292463

'FIVE GO TO LYME...'

17 - 23 June

Malthouse Gallery, The Town Mill, LYME REGIS, DT7 3PU. Friday - Thursday 10am - 4.30pm. townmill.org.uk.

'WHOSE (IS) LAND IS IT ANYWAY?'

18 June

St Georges Centre, Reforne, PORTLAND, DT2 2AN. 11am - 4pm. 01305 568044 / b-side.org.uk. "Join b-side for a day of artist led activities and explore the heritage, landscape and biodiversity of the beautiful Isle of Portland - exhibition, talks, walks and of course... bingo."

BRIDPORT ARTS SOCIETY SUMMER EXHIBITION

18 June - 10 July

Sou'-Sou'-West Arts Gallery, Symondsbury Estate, BRIDPORT, DT6 6HG. 10.30am - 4.30pm. 01308 301326 / sousouwest.co.uk.

SALLY MALBY: 'MAINLY FLOWERS OF THE WAYSIDE'

20 June - 3 July

Sou'-Sou'-West Arts Gallery, Symondsbury Estate, BRIDPORT, DT6 6HG. 10.30am - 4.30pm. 01308 301326 / sousouwest.co.uk. "Photography and digital art."

DAVID JOY

22 - 28 June

Shaftesbury Arts Centre, Bell Street, SHAFTESBURY, SP7 8AR. Monday - Saturday 10am - 4pm. 01747 855243. Photographs.

SABINE ABRAHAMS: 'LIVING IN INTERESTING TIMES'

22 June - 5 July

Shaftesbury Arts Centre, Bell Street, SHAFTESBURY, SP7 8AR. Monday - Saturday 10am - 4pm. 01747 855243 / shaftesburyartscentre.org.uk.

'PHOTO|FROME'

22 June - 15 July

Gallery At The Station, Station Approach, FROME, BA11 1RE. Monday - Saturday 10am - 4pm. 07970 462395. "As part of the Photo|Frome photography festival, this exhibition will bring together a group of photographers with work inspired by the festival's theme, 'The Independent Eye'."



'INSECT ODYSSEY'

25 June - 25 September

Salisbury Museum, The Kings House, 65 The Close, SALISBURY, SP1 2EN, 10am - 5pm. 01722 332151 / salisburymuseum.org.uk. "An insight into the insect world through the visual responses and interpretations of contemporary artists."

Music

May and June 2022



THE NIGHTINGALES + TED CHIPPINGTON + RATS ON RAFTS

2 May

The Thekla, The Grove, East Mud Dock, BRISTOL, BS1 4RB. 7pm. £17. theklabristol.co.uk.

BIRDFEEDER + BAD NEWS FIRST + HOLY REPTILE

2 May

The Louisiana, Wapping Road, Bathurst Terrace, BRISTOL, BS1 6UA. 8pm. £5. thelouisiana.net.



KATE BOLLINGER

3 May

The Louisiana, Wapping Road, Bathurst Terrace, BRISTOL, BS1 6UA. 8pm. £10. thelouisiana.net.

BSO: 'BRILLIANT MENDELSSOHN'

4 May

Lighthouse, 21 Kingland Road, POOLE, BH15 1UG. 7.30pm. £48 / £8. 01202 669925 / bsolive.com. "A concert including Mozart's *Così fan tutte* Overture, Britten's *Simple Symphony*, Mendelssohn's *Violin Concerto in E Minor* and Schubert's *Symphony No. 5*."

KAREN + ARREST CHARLIE TIPPER

6 May

The Thunderbolt, 124 Bath Road, BRISTOL, BS4 4ED. 7.30pm. thethunderbolt.net.



'SAM ARMSTRONG'

Thom, Upshaw and Armstrong

"Eloisa-Fleur Thom is a prize-winning violinist, director and curator. Highlights of her career so far include performing JS Bach's *Concerto in D minor* for two violins with the celebrated violinist Maxim Vengerov, chamber music with Radiohead's Jonny Greenwood, and appearing as soloist at the 2019 BBC Proms for Arvo Pärt's *Fratres* with 12 ensemble. American violist Stephen Upshaw made his concerto debut at just 17, since when he has won several competitions and played in festivals around the world, including the BBC Proms, Cheltenham, IMS Prussia Cove, Lucerne, Brighton, Huddersfield and more. Hailed as 'a major new talent' by International Piano for his Wigmore Hall recital debut, British pianist Sam Armstrong brings deeply-felt interpretive power to the solo, chamber music and vocal repertoire. He has appeared in Amsterdam's Concertgebouw, Carnegie Hall New York, Seoul Arts Center, Singapore Esplanade and the Royal Festival Hall."

6 May: Bridport Arts Centre, South Street, BRIDPORT, DT6 3NR. 11.10am. £14. 01308 424204 / bridport-arts.com.

6 May: Ilminster Arts Centre, East Street, ILMINSTER, TA19 0AN. 6.15pm. £18. 01460 54973 / concertsinthewest.org.

7 May: The Dance House, Gouldsbrook View, North Street, CREWKERNE, TA18 7AL. 6.45pm. £18. 01823 252658 / 01460 75928 / concertsinthewest.org.

Concerts IN THE West

CHAMBER MUSIC MINI-TOURS IN
DEVON, DORSET AND SOMERSET
BRIDPORT - CREWKERNE - ILMINSTER - LYME REGIS
MINEHEAD - TAUNTON - UPWEY NR WEYMOUTH

3 FEBRUARY TO 6 NOVEMBER 2022

- 3, 4, 5, 6 FEBRUARY **SOLEM QUARTET**
- 4, 5 MARCH **ALASDAIR BEATSON & EUSEBIUS QUARTET**

concertsinthewest@gmail.com - CATHERINE MADDOCKS DIRECTOR
01823 252658

www.concertsinthewest.org



- 31 MCH, 1-3 APRIL **PELLÉAS ENSEMBLE**
- 6, 7 MAY **ELOISA-FLEUR THOM, STEPHEN UPSHAW & SAM ARMSTRONG**
- 17, 18 JUNE **TIM HORTON PIANO**
- 15, 16 JULY **CALLUM SMART & RICHARD UTTLEY**
- 2, 3 SEPTEMBER **FENELLA HUMPHREYS, CARA BERRIDGE & DANIEL GRIMWOOD**
- 6, 7, 8, 9 OCTOBER **JUBILEE QUARTET**
- 3, 4, 5, 6 NOVEMBER **NAOMI BURRELL, GAVIN KIBBLE & DAVID GERRARD**

THEATRE DANCE MUSIC FILM SPOKEN WORD COMEDY EXHIBITIONS TAKE PART

BRIDPORT ARTSCENTRE



BRIDPORT ARTS CENTRE IS BACK IN ACTION.

This multi-arts venue offers a phenomenal, year-round programme of visual arts, theatre, dance, comedy, music, spoken word and film.



VISIT OUR WEBSITE TO DISCOVER THE BENEFITS OF BECOMING
A SUPPORTER OF THE BRIDPORT ARTS CENTRE

Visit us online at www.bridport-arts.com or call **01308 424901**.

*The Gallery is open Tuesdays – Saturdays, 10am to 4pm. FREE ENTRY.

THE CHESTERF!ELDS OUR SONGBIRD HAS GONE

Mr. Mellow's
MUSIC

RAZORCUTS THE JUNE BRIDES
McCARTHY TV PERSONALITIES
THE FALL THE LOFT THE MONOCHROME SET
THE BODINES THE COLOURFIELD
JOSEF K ORANGE JUICE
THE FIRE ENGINES HEAVENLY
DELTA 5 THE HOUSE OF LOVE
THE WALTONES THE GO-BETWEENS
CLOSE LOBSTERS LLOYD COLE
THE BLUE AEROPLANES GANG OF FOUR
ALTERED IMAGES SONIC YOUTH
THE CLEANERS FROM VENUS SANDIE SHAW
BMX BANDITS THE DARLING BUDS
DEPARTMENT S THE VASELINES
AZTEC CAMERA THE SMITHS JAMES
THE BEAT HOTEL THE GO-BETWEENS

THE CHESTERF!ELDS OUR SONGBIRD HAS GONE

New single available on Mr Mellow's Music in June 2022

The_Chesterfields

Mr. Mellow's
MUSIC

Music



James Lisney plays Chopin

"Pianist James Lisney celebrates his sixtieth birthday recital tour with a programme devoted to the music of Frederyk Chopin, a composer particularly close to his heart."

21 May: St George's Bristol, Great George Street, BRISTOL, BS1 5RR. 7.30pm. £20 / £12. stgeorgesbristol.co.uk.

BSO: 'MUSICAL BOX OF DELIGHTS'

6 May

Christchurch Priory, 4 Quay Road, CHRISTCHURCH, BH23 1BU.

7.30pm. £22 / £15. 01202 669925 / bsolive.com. "A concert including Abinoni's Concerto for 2 Oboes, JS Bach's Concerto for 2 Violins, Albinoni's Adagio for Organ & Strings, Rossini's Duetto for Bass & Cello, Debussy's Syrinx, Brahms' Serenade No. 1 (1st mvt)."

RAG MAMA RAG

7 May

Caryford Community Hall, Maggs Lane, CASTLE CARY, BA7 7JJ. 6.45pm. £15 / £12. 01963 350980 / caryfordhall.co.uk. "One of Europe's finest country blues acts."

THE GALLIARD ENSEMBLE

8 May

Kimmeridge House, Bournemouth University, Fernbarrow, POOLE, BH12 5BB. 3pm. £20. 01202 745516 / bournemouthchambermusic.co.uk. "Music by Rossini, Mozart, Chopin, Bozza, Thuille and Francaix."

DAIORI FARRELL

11 May

Brown Street, 29 Brown Street, SALISBURY, SP1 2AS. 7.30pm. £12.50. 01722346860. "Join award winning singer and bouzouki player Daorí Farrell for a night of traditional Irish songs and tunes."

BSO: 'I WAS GLAD'

11 May

Lighthouse, 21 Kingland Road, POOLE, BH15 1UG. 7.30pm. £48 / £8. 01202 280000 / lighthousepoole.co.uk. "A concert including Parry's I Was Glad, Tchaikovsky's The Tempest Fantasy Overture, Walton's Henry V: A Shakespeare Scenario."

RACHEL CHINOURIRI

12 May

The Louisiana, Wapping Road, Bathurst Terrace, BRISTOL, BS1 6UA. 8pm. £10. thelouisiana.net.

PILLOW QUEENS

13 May

The Thekla, The Grove, East Mud Dock, BRISTOL, BS1 4RB. 7pm. £12. theklabristol.co.uk.

'STAYIN' ALIVE'

13 May

The Exchange, Old Market Hill, STURMINSTER NEWTON, DT10 1FH. 7.30pm. £18 / £17. 01258 475137. "Bee Gees covers."

STEPHEN FEARING

13 May

Mission Hall, Mission Hall Lane, SUTTON POYNTZ, Weymouth, DT3 6LW. 7.30pm. £15. 01305 837299. "A beguiling teller of tales and master guitarist, Stephen Fearing's music is a mesmerising blend of roots, folk, and pop."

EVOLVER MAGAZINE

DEADLINE FOR NEXT ISSUE

July and August 2022

TUESDAY 7 JUNE

THE ILLYRIA TRIO

14 May

St. John's Church, CHURCHILL, BS25 5QW. 7.30pm. 01934 852589.

PHILIP CLOUDS AND RON PHELAN

20 and 21 May

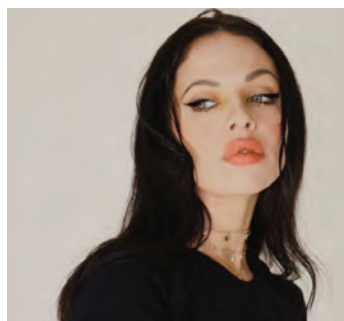
Tincton Gallery, The Old School House, TINCLETON, near Dorchester, DT2 8QR. 7.30pm. £15. tinctongallery.com. "Known for his lively melodic compositions infused with world music, pianist Philip Clouds returns to Tincton with exceptional double bass player Ron Phelan."



GUY DAVIS

21 May

Caryford Community Hall, Maggs Lane, CASTLE CARY, BA7 7JJ. 6.45pm. £18 / £15. 01963 350980 / caryfordhall.co.uk. "An evening of roots, blues and Americana by this Grammy-nominated US performer."



KELSIE KARTER

21 May

The Louisiana, Wapping Road, Bathurst Terrace, BRISTOL, BS1 6UA. 8pm. £12.50. thelouisiana.net.



Skedaddle

"Skedaddle draw inspiration from a rich history of great tunes that have stood the test of time. A lot of their material is based on New Orleans jazz from the early twentieth century. Performers such as Louis Armstrong and Ella Fitzgerald, Cab Calloway, Louis Jordan, Fats Waller, Bessie Smith and Louis Prima have all become legendary amongst jazz lovers, and the band delight in sharing their joyful music with audiences today. They also draw inspiration from gypsy jazz greats such as Django Reinhardt, and an eclectic mix of Klezmer and Balkan gypsy songs and dances. The band features singer and guitarist Myles de Gruyther, with Becky Doe playing the fiddle, Dave Holland at the piano, Joe Gass on double bass and Iwan Kuchenberg at the drums."

6 May: Bridport Arts Centre, 9 South Street, BRIDPORT, DT6 3NR. 8pm. £14 / £12 / £5. 01308 424204 / bridport-arts.com.

'NOSFERATU'

21 May

The Walled Garden, MORETON, Dorchester, DT2 8RG. 8.15pm. £12.50. 01929 462243 / walledgardenmoreton.co.uk. "Outdoor cinema in the illuminated Gardens of the original (and probably the best) vampire film Nosferatu, accompanied by The Somnambulists playing a new and unique live soundtrack. Bar and food."

NATIONAL OPEN YOUTH ORCHESTRA AND BSO RESOUND

22 May

Lighthouse, 21 Kingland Road, POOLE, BH15 1UG. 7.30pm. £13 / £1. 08454 024001 / bsolive.com. "The National Youth Orchestra and Bournemouth Symphony Orchestra Resound host a concert where you can enter a captivating musical universe where the familiar merges with the unknown."

CHIPPENHAM FOLK FESTIVAL

27 - 29 May

The Cause Music and Arts Centre, The Causeway, CHIPPENHAM, SN15 3DD. chippfolk.co.uk / 01249 657190.

MILL FARM FOLK FESTIVAL

28 May

Mill Farm, BRADFORD ABBAS, Sherborne, DT9 6RE. 11.30am - 11pm. £15. millfarmdorset.com. "A family friendly festival day out featuring some of the very best local folk acts in the South West."

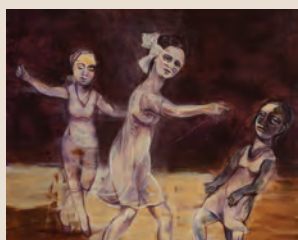


Exhibit A

Artists and photographers are invited to submit work for next issue's page 3 Exhibit A by emailing images to: simon@evolver.org.uk



CLOCKTOWER MUSIC, Bridport's vinyl record shop welcomes our satellite shop **CLOCKTOWER TOO**. Clocktower Too specialises in all styles of music on CD, plus a selection of music memorabilia and vinyl records.
35a South Street, Bridport, Dorset DT6 3NY
Open Monday, Wednesday, Friday and Saturday, 9.30am - 3.30pm



We are a funky, independent record shop stocking a great range of new and preloved vinyl, specialising in Reggae, Hip Hop, Soul, Funk, World, Electronic, Jazz, Blues, Alternative, Indie, Rock, Pop and more.
8a Pope Street, Brewery Square, Dorchester, DT1 1GW
Tuesday to Saturday from 10am

'DECEMBER, 1963 - OH, WHAT A NIGHT!'

28 May

The Exchange, Old Market Hill, STURMINSTER NEWTON, DT10 1FH. 01258 475137 / stur-exchange.co.uk. "Four Seasons covers."

ARTY PARTY

29 May

Boilerhouse Gallery, Sandy Hill Lane, CORFE CASTLE, BH20 5JF. 2 - 5pm. boilerhousegallery.co.uk. "Join us for live music, a spot of Pimms, and delicious food at our end of Dorset Art Weeks and beginning of Purbeck Art Weeks party."

BSO: 'HOMELANDS'

29 May

Westlands, Westbourne Close, YEOVIL, BA20 2DD. 2.30pm. £10 / £5. 01935 422884 / westlandseyovil.co.uk. "This relaxed and friendly concert is specifically adapted for concertgoers with autistic spectrum conditions, those with sensory, communication or learning difficulties, families with young children and anyone else who would benefit from a less formal environment."



THE COURETTES

1 June

The Louisiana, Wapping Road, Bathurst Terrace, BRISTOL, BS1 6UA. 8pm. £10. thelouisiana.net.

CURSUS CIDER & MUSIC FESTIVAL

2 - 5 June

Canada Farm, SIXPENNY HANDLEY, Dorset, SP5 5RX. £79 / £5. cursusfestival.com. "Small, friendly bank holiday weekend festival featuring live acts and DJs on the beautiful Cranborne Chase."



Soak

"Bridie Monds-Watson, aka Soak, has announced their third album *If I Never Know You Like This Again*, to be released by Rough Trade Records on 20 May. The album is made up of what Bridie calls 'song-memories'. Having written much of the new album during the pandemic, when time felt at its slowest, Bridie's obsessive need to document each chapter of their life made a marvel of the mundane. Alongside long-time collaborator Tommy McLaughlin, the two wrote most of the album together while listening obsessively to indie bands like Broken Social Scene and Pavement and Radiohead's classic album *The Bends*. After being away from each other for the majority of the pandemic, it was important to create the record as a band, and the joyful energy of having everyone in the same room again is palpable. Tapping into their specific experiences, the result is a record that is deeply relatable and sparkling, as it traverses the ups and downs of their journey to become a fully realised person."

2 June: The Thekla, The Grove, East Mud Dock, BRISTOL, BS1 4RB. 6.30pm. £12.50. theklabristol.co.uk.

JAZZ JURASSICA

2 - 5 June

Marine Theatre and seafront, LYME REGIS, DT7 3BG. 01297 442394 / jazzjurassica.co.uk. "Four day festival of cool jazz, gritty blues and sassy soul on the sunny Dorset coast."

BENET MCLEAN QUINTET

3 June

Lighthouse, 21 Kingland Road, POOLE, BH15 1UG. 8pm. 01202 280000 / lighthousepoole.co.uk. "Virtuoso violinist Benet McLean is one of the UK's most prodigious jazz talents and his all-star quintet plays a unique blend of violin-infused hard bop standards and originals with a contemporary twist."

WESSEX FOLK FESTIVAL

3 - 5 June

Trinity Road, WEYMOUTH, DT4 8TJ. wessexfolkfestival.com. "A weekend of free music and dance around the Weymouth Quayside with stage performances in Hope Square on Sunday, followed by a ceilidh."

THE AMERICAN FOUR TOPS

4 June

Lighthouse, 21 Kingland Road, POOLE, BH15 1UG. 7.30pm. 01202 280000 / lighthousepoole.co.uk.

THE LUKA STATE

4 June

The Louisiana, Wapping Road, Bathurst Terrace, BRISTOL, BS1 6UA. 8pm. £10. thelouisiana.net.

MICHAEL HEAD & THE RED ELASTIC BAND

7 June

The Thekla, The Grove, East Mud Dock, BRISTOL, BS1 4RB. 7pm. £20. theklabristol.co.uk.

THE PASSENGER CLUB + LOST AT SEA + SAMMY MILTON

9 June

Lighthouse, 21 Kingland Road, POOLE, BH15 1UG. 7.30pm. 01202 280000 / lighthousepoole.co.uk.

THE NATIVE + LOW LYING SUN

10 June

The Louisiana, Wapping Road, Bathurst Terrace, BRISTOL, BS1 6UA. 8pm. £8.50. thelouisiana.net.

Subscribe to
EVOLVER MAGAZINE
online at
evolver.org.uk

Six bi-monthly issues for £25



Follow
EVOLVER MAGAZINE
on Instagram

evolvermagazine





The Gulp

"From the four corners of Europe and the Middle East, hell-bound for fame and chaos, The Gulp are a rock'n'roll act based in Camden, London. Originally from a small town in La Rioja, Spain, lead singer Harry and his Basque punk guitarist Charlie Green, chased their teenage obsessions with English rock bands across the pond to England. They met their fellow bandmates at the Institute Of Contemporary Music Performance - bassist Simon Mouchard from Nantes, France, drummer Raoul Khayat, from Beirut, Lebanon and guitarist Francesco Buffone from Calabria in Southern Italy. Their songs merge classic punk and rock'n'roll, '60s psychedelia and the gnarled pop charge of The Strokes with the gritty, modern underground intensity of Idles or Shame."

6 June: The Louisiana, Wapping Road, Bathurst Terrace, BRISTOL, BS1 6UA. 8pm. £9.50. thelouisiana.net.

WIMBORNE MINSTER FOLK FESTIVAL

10 - 12 June

Various locations in WIMBORNE MINSTER, Dorset.

wimbornefolk.co.uk. "Morris dancers, music, and more!"

EMMA JOHNSON, MARTIN ROSCOE, SIMON BLENDIS, RAPHAEL WALLFISCH

12 June

Kimmeridge House, Bournemouth University, Fernbarrow, POOLE, BH12 5BB. 3pm. £20. 01202 745516 / bournemouthchambermusic.co.uk.

KATHARINE LAM

17 and 18 June

Tinleton Gallery, The Old School House, TINCLETON, near Dorchester, DT2 8QR. 7.30pm. £15. 01305 848909 / tinclongallery.com. "Katharine Lam has established a distinguished profile throughout the UK and abroad as recitalist, concerto-soloist, chamber musician, accompanist and music educator."

'A NIGHT OF BLUES'N'BOOGIE'

18 June

Lighthouse, 21 Kingland Road, POOLE, BH15 1UG. 8pm. 01202 280000 / lighthousepoole.co.uk.

JAMIE & THE FALCONS

18 June

The Exchange, Old Market Hill, STURMINSTER NEWTON, DT10 1FH. 8pm. £15. 01258 475137 / stur-exchange.co.uk.

BOB MOULD

20 June

The Thekla, The Grove, East Mud Dock, BRISTOL, BS1 4RB. 7pm. theklabristol.co.uk.

JIM WHITE

20 June

The Louisiana, Wapping Road, Bathurst Terrace, BRISTOL, BS1 6UA. 8pm. £17.50. thelouisiana.net.



JOHN OTWAY AND HIS BIG BAND

24 June

The Thunderbolt, 124 Bath Road, BRISTOL, BS4 4ED. 7.30pm. thethunderbolt.net.

TOM ROBINSON

24 June

The Exchange, Old Market Hill, STURMINSTER NEWTON, DT10 1FH. 8pm. £22. 01258 475137 / stur-exchange.co.uk.

FOLK ON THE QUAY

25 and 26 June

The Quay, POOLE. folkonthequay.co.uk.



Opera Brava

Britain's Leading Outdoor Touring Opera Company

At The Bishop's Palace, Wells

TOSCA

and

THE BARBER OF SEVILLE

14th and 15th July 2022

Bring your own picnic and seating
Artisan picnics can also be ordered online
through the box office
Pimms, Prosecco and other refreshments available

Tickets:

Tosca £35 / Under 16 £10
The Barber of Seville £35 / Under 16 £10
Both evenings £65 / Under 16 £15
Gates open 6.30pm
Performance starts 7.30pm

Book online

bishopsplace.org.uk



The Bishop's Palace

WELLS - SOMERSET

Performance

May and June 2022



New Art Club: Cupid's Revenge

"A joyful, physical and verbal outburst against the forces that masquerade as love. In today's disposable world where love is used to sell us everything from plug-in cars to yoghurt... where did real love go? The latest dance theatre comedy show by groundbreaking performance company New Art Club is about love. Mythical love that drives the creation of the universe and everything in it. Romantic love. Love between friends. Love between you and the people you love. It is funny, sad and reflective. It is not a story but it holds lots of stories inside it. In that way it is like you. It has a flickering heart that has crashed to earth *Cupid's Revenge* is an attempt to bring audiences together in a defiant act of unity and love. With New Art Club's dexterous physicality this impossibly big topic is broken open and brought vividly to life."

13 May: Mowlem Theatre, SWANAGE, BH19 1DD. 7.30pm. £12 / £5. 01929 422239 / artsreach.co.uk.

14 May: The Exchange, STURMINSTER NEWTON, DT10 1FH. 7.30pm. £12 / £5. 01258 475137 / artsreach.co.uk.

BATH DRAMA: 'TOUCHED'

4 - 7 May

Rondo Theatre, St Saviours Road, BATH, BA1 7RT. 7pm. £14. 0333 666 3366 / rondotheatre.co.uk.

"Between VE and VJ Days in 1945, a group of working class women in Nottingham deal with the end of war and the new beginnings promised by the Labour government."



TANGO CALOR

6 May

Village Hall, CHARLTON HORETHORNE, DT9 4FY. 7pm. £10. 01935 814199. *"Tango Calor will take you on a journey from the backstreets of Buenos Aires to the salons of Paris with their evocative performances of traditional and contemporary tango music."*



'ELIZABETH I: VIRGIN ON THE RIDICULOUS'

11 May

Bridport Arts Centre, 9 South Street, BRIDPORT, DT6 3NR. 7.30pm. 01308 424204 / bridport-arts.com. *"With live original music, silly songs, smutty shenanigans, perfunctory props, and hysterically historical horseplay, this promises to be (another) poorly researched lesson in Tudor history that you'll never forget."*

SHERBORNE TIMES

A MONTHLY CELEBRATION OF PEOPLE, PLACE AND PURVEYOR

OUT NOW AND ONLINE

sherbornetimes.co.uk

Performance

'ELVIS AND BOWIE'

21 May

Sandy Hill Arts, Sandy Hill Studios,
Sandy Hill Lane, CORFE CASTLE,
BH20 5JF. 6pm. £12 / £10. 07716
080999 /

sandyhillarts.eventbrite.co.uk.

"Fresh from Radio 4 - stand-up
poet and comedian Elvis
McGonagall, followed by Paul
Anthony's award winning Pop-up
Bowie. Catering from The Sprout &
Bean, bar and DJ."

'SWIM'

23 May

Exeter Phoenix, Gandy Street,
EXETER, EX4 3LS. 7.30pm. £12 / £10.
01392 667080 /

exeterphoenix.org.uk. "Filled with
humour and heart, live music and
projection, Swim is a tender tale of
rediscovery based on a true story."

'ELIZABETH I: VIRGIN ON THE RIDICULOUS'

24 May

The Exchange, Old Market Hill,
STURMINSTER NEWTON, DT10 1FH.
7.30pm. £15 / £14. 01258 475137 /

stur-exchange.co.uk. See 11 May.

'ADVENTURE TO NEVERLAND'

4 June

Lighthouse, 21 Kingland Road,
POOLE, BH15 1UG. 12.30 and
6.30pm. 01202 280000 /
lighthousepoole.co.uk.

'FREEDOM ROAD: A RE- IMAGINING'

4 June

Lighthouse, 21 Kingland Road,
POOLE, BH15 1UG. 8pm. 01202
280000 / lighthousepoole.co.uk. "An
immersive, multi-arts performance
honouring the civil rights
movement in both the UK and the
US."

MI FLAMENCO: 'ECHOES'

9 June

Bridport Arts Centre, 9 South Street,
BRIDPORT, DT6 3NR. 7.30pm. 01308
424204 / bridport-arts.com. "An
unmissable opportunity to witness
the opening night of Mi Flamenco's
debut tour of their evocative new
production."



Regents Opera: Carmen

"Regents Opera is a leading fringe Opera Company specialising in the larger works of the 19th and 20th centuries. The now touring company offers emerging and established singers a platform to perform major repertoire not often staged outside the major houses. This touring show is directed by Paul Higgins of Glyndebourne Festival Opera and the Royal Opera House, and stars renowned Greek mezzo soprano Kassandra Dimopoulou as Carmen and Howard Hutt as her Don Jose. This outstanding production features four cast members, accompanied by their talented pianist and musical director Ben Woodward."

26 June: Mowlem Theatre, SWANAGE, BH19 1DD. 7.30pm. £16 / £8. 01929 422239 / artsreach.co.uk.

'FANTASTICALLY GREAT WOMEN WHO CHANGED THE WORLD'

7 - 12 June

Lighthouse, 21 Kingland Road,
POOLE, BH15 1UG. Tuesday -
Saturday 7pm (Thursday - Sunday
matinees 2pm). 01202 280000 /
lighthousepoole.co.uk. "Celebrated
dramatist Chris Bush and chart-
topping songwriter Miranda
Cooper (Girls Aloud, Kylie Minogue)
adapt suffragette descendent Kate
Pankhurst's award-winning picture
book, produced for the stage by the
company behind the smash hit
musical Six."



BALLET CENTRAL

11 June

Bridport Arts Centre, 9 South Street,
BRIDPORT, DT6 3NR. 7.30pm. 01308
424204 / bridport-arts.com. "Ballet
Central returns with a new cast of
exceptional dancers."

WASSAIL THEATRE: 'WHISPERING WILLOWS'

11 June

Springhead Gardens, FONTMELL
MAGNA, SP7 0NU. 11.30am and
2pm. £8 / £5. 01747 811853 /
artsreach.co.uk.

PAUL TONKINSON + LAURA SMYTH + JAMES ELLIS

11 June

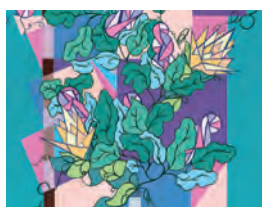
Lighthouse, 21 Kingland Road,
POOLE, BH15 1UG. 8pm. 01202
280000 / lighthousepoole.co.uk.
Comedy.

Shaftesbury Arts Centre



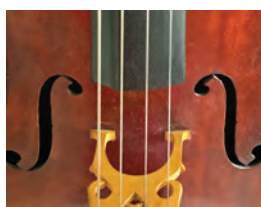
SAC Youth Theatre

Captain Blackboot's Island
Round the World with Class 6
30 April - 1 May



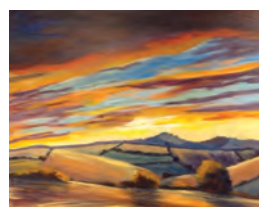
Corrina Cooper

Welcome 22 Exhibition
4 - 10 May



The Sound of the Cello

SAC at St Peter's Church,
Shaftesbury
12 May, 9 and 30 June



Silton Art Group

Exhibition
11 - 17 May



Films at SAC

First Cow 13 May
Laurence After Arabia 15 May
Mothering Sunday 17 May

11 - 13 Bell Street Shaftesbury, Dorset SP7 8AR [f](https://www.facebook.com/shaftesburyartscentre) [i](https://www.instagram.com/shaftesburyartscentre) [y](https://www.youtube.com/shaftesburyartscentre) 01747 854321 • [shaftesburyartscentre.org.uk](https://www.shaftesburyartscentre.org.uk)

JAZZ DANCE COMPANY

15 June

Lighthouse, 21 Kingland Road, POOLE, BH15 1UG. 7.45pm. 01202 280000 / lighthousepoole.co.uk. *"The hottest new talent in jazz dance, in a vibrant programme of works ranging from the sensuality and lyricism of contemporary jazz to modern street dance and the rhythmic complexities of tap."*

'GREAT EXPECTATIONS'

17 June

Village Hall, LYTCHETT MATRAVERS, BH16 6DD. 7.30pm. £10 / £8. 07795 467666 / artsreach.co.uk. *"Teeming with eccentricity, fearsome convicts, stopped clocks, decay and decadence, Jo Clifford's adaptation is vividly brought to the stage by director Jenny Stephens and Bristol Old Vic Theatre School's acting and production students."*

TANGO CALOR

17 June

Bridport Arts Centre, 9 South Street, BRIDPORT, DT6 3NR. 8pm. £14 / £12 / £5. bridport-arts.com. See 6 May.



ANTON DU BEKE & GIOVANNI

PERNICE: 'HIM & ME'

17 June

Lighthouse, 21 Kingland Road, POOLE, BH15 1UG. 7.30pm. 01202 280000 / lighthousepoole.co.uk. *"The ballroom king and the two-time Guinness World Record holder will be joined by a world class cast of dancers and singers in a true dance extravaganza."*

'FUKUSHIMA'

17 June

Lighthouse, 21 Kingland Road, POOLE, BH15 1UG. 8pm. lighthousepoole.co.uk. *"A play by John Foster dramatising the 2011 Fukushima nuclear plant disaster following the combined impact of earthquake and tsunami."*



Paul Merton's Impro Chums

"Paul Merton, Richard Vranich, Suki Webster, Mike McShane and accompanist Kirsty Newton are back on the road."

14 June: Lighthouse, 21 Kingland Road, POOLE, BH15 1UG. 7.45pm. 01202 280000 / lighthousepoole.co.uk.

MOLLY NAYLOR: 'STOP TRYING TO BE FANTASTIC'

18 June

Exeter Phoenix, Gandy Street, EXETER, EX4 3LS. 7pm. £12 / £10. exeterphoenix.org.uk. *"Lyrical and funny anti self-help show... that might actually help."*

MERELY PLAYERS

20 - 25 June

Studio Theatre, Ashley Road, SALISBURY, SP2 7TN. 7.30pm. £12 / £8. studiotheatre.org.uk. *"A cornucopia of words, music, songs and sonnets cherry-picked from Shakespeare."*

CHRIS RAMSEY

22 June

Lighthouse, 21 Kingland Road, POOLE, BH15 1UG. 7.45pm. 01202 280000 / lighthousepoole.co.uk. Comedy.

'BLACK CHERRY IMPROV MIDSUMMER SPECIAL'

24 June

Lighthouse, 21 Kingland Road, POOLE, BH15 1UG. 8pm. 01202 280000 / lighthousepoole.co.uk. *"Summer's here and Black Cherry have put on their factor 50, chucked on the flip flops and are ready to jump straight into the show that takes audience participation to the next level."*



HANNAH MAXWELL: 'I, AMDRAM'

25 June

Exeter Phoenix, Gandy Street, EXETER, EX4 3LS. 7pm. £12 / £10. exeterphoenix.org.uk. *"Amateur dramatics: the hidden history of many a performance artist. From four generations of leading ladies comes one queer Londoner, sharing a story of return and reconciliation; with her hometown, cultural inheritance and secret love of musical theatre."*

'MISS NOBODIES'

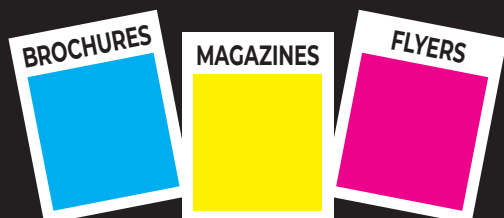
30 June

Art Bank, SHEPTON MALLET, BA4 5AA. 7pm. £10. 01460 249450 / takeart.org. *"This funny and poignant two-hander play looks at the women and story of an industrial town shop spanning across the last 100 years."*

'VANITY FAIR'

30 June

The Exchange, STURMINSTER NEWTON, DT10 1FH. 7.30pm. £12 / £8. 01258 475137 / artsreach.co.uk. *"Bristol Old Vic Theatre School's BA Acting cohort showcase an exuberant production."*



((acoustic))
DISTRIBUTION

We deliver any marketing material

Call Will on 07397 853006
acousticdistribution@btinternet.com
acousticdistribution.co.uk

EVOLVER MAGAZINE FREE LISTINGS

Exhibition and performance listings should be emailed to listings@evolver.org.uk

Please send ALL information in the following order:

Event, date(s), venue, address (including postcode), times, admission fee (if any), contact number / website, up to 30 words about your event



EVOLVER PRIZE 2022

First Prize £1,000 + Evolver Magazine 126 Front Cover

CALLING ALL ARTISTS!

EVOLVER MAGAZINE

ARTISTS, PHOTOGRAPHERS and DESIGNERS are invited to submit actual cover size 2D work in any media for selection for the **FRONT COVER OF EVOLVER MAGAZINE 126** (July and August 2022 issue) + **£1,000**

The judges will also select an additional 49 WORKS for a **TOP 50 EXHIBITION** at ACE ARTS, Somerton (2 - 30 July 2022) and publication in EVOLVER MAGAZINE 126

JUDGES:

Simon Barber (Editor, Evolver)

Leo Davey (Winner, Evolver Prize 2020)

Nina Gronw-Lewis (Artistic Director, Ace Arts)

Dave Watts (Photographer)

DEADLINE: THURSDAY 19 MAY 2022

Further information:
evolver.org.uk/evolverprize
prize@evolver.org.uk



NAME	
ADDRESS	
	POSTCODE
TELEPHONE	EMAIL

Evolver Prize 2022 Entry Form

TITLE OF WORK	MEDIUM	SELLING PRICE *
1		
2		
3		

SUBMISSION FEE (£10 PER WORK):

£

* Ace Arts will take a 40% commission from this price if the work is exhibited and sold

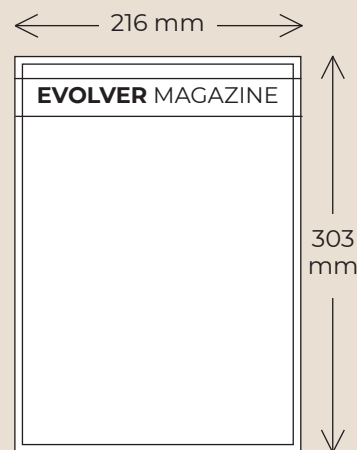
☐ I HAVE PAID ONLINE AT **PAYMENTS.EVOLVER.ORG.UK** AND MY REFERENCE NUMBER IS _____
 We accept payments by credit / debit card online at **payments.evolver.org.uk**
 Alternatively, go to **evolver.org.uk** and click on the Evolver Prize heading

☐ I HAVE PAID OVER THE PHONE **01935 808441** AND MY REFERENCE NUMBER IS _____
 We accept payments by credit / debit card over the phone, Monday - Thursday, 9am - 4pm

Send **ARTWORK + ENTRY FORM + SAE FOR RETURN OF ARTWORK** to: EVOLVER PRIZE 2022, EVOLVER MEDIA, 8 BUCKLAND ROAD, PEN MILL TRADING ESTATE, YEOVIL, SOMERSET BA21 5EA

DEADLINE: THURSDAY 19 MAY 2022

☐ Please tick box if you do not wish to be added to the Evolver Magazine and Ace Arts mailing lists



SUBMISSIONS

The image size of each submitted work must measure 216 x 303 mm (the actual size of our front cover plus an extra 3 mm all round)

The work should be an unframed original artwork or high quality print that can be sold at the exhibition

Up to 3 works may be submitted
 A submission fee of £10 per work will be charged

Please also supply a stamped addressed envelope for the return of your artwork

PLEASE NOTE

The judges will definitely not be looking for a particular style of work
The work submitted should be anything that you believe would make a great front cover

[illegible]

evolvermagazine



TUESDAY 7 JUNE

Outlets and Sponsors

EVOLVER MAGAZINE is available **FREE** at the following Wessex outlets:

ABBOTSBURY: Abbotsbury Studio, Dancel Gallery. AXMINSTER: Archway Bookshop, Axminster Arts Café, Sublyme Café. BATH: Bath Artists' Studios, Beaux Arts, The Bell Inn, The Edge / ICIA, Holburne Museum of Art, Michael Tippett Centre, University of Bath, Victoria Art Gallery. BEAMINSTER: Little Toller Books. BLANDFORD: Blandford Fashion Museum, Bryanston Arts Centre, Forum Café, Forum Framers. BOSCOMBE: Artcetera. BOURNEMOUTH: All Fired Up, Miramar Hotel, Pavilion Dance, Royal Bath Hotel, Russell-Cotes Museum & Art Gallery. BOWER HINTON: The Hollies Hotel. BRADFORD ON AVON: Wiltshire Music Centre. BRIDGWATER: Bridgwater Arts Centre, Clayhill Arts, Engine Room. BRIDPORT: Beach & Barnicott, Bridport Arts Centre, Bridport Old Books, The Bull Hotel, Clocktower Music, Literary and Scientific Institute, Lyric Theatre. BRISTOL: Arnolfini, Bocabar, The Bristol Artisan, Bristol Beacon, Bristol Fine Art, Centrespace, Clifton Fine Art, Create Centre, Folk House, Jamaica Street Artists, Lime Tree Gallery, Bristol Old Vic, PRSC Gallery, RWA, Spike Island, St George's, Tobacco Factory, Trinity Centre, UWE, Watershed. BROADWINDSOR: Redlands Yard. BRUTON: At The Chapel, Hauser and Wirth. BUDLEIGH SALTERTON: Brook Gallery. BURNHAM ON SEA: Princess Theatre & Arts Centre, Seabreeze Gallery. CASTLE CARY: Bailey Hill Bookshop, David Simon Gallery, Trowbridge Gallery. CHARD: Art Café, Barleymow's, Hornsbury Mill Hotel. CHARLTON: Glebe Gallery. CHARMINSTER: Flux Art Supplies. CHEDDAR: Cheddar Art School, Sketch Café. CHEDDON FITZPAINE: Hestercombe Gallery. CHESIL BEACH: Fine Foundation Centre. CHIPPENHAM: Chippenham Museum. CHRISTCHURCH: Hatch Gallery, Hayloft Gallery, Red House Museum, Regent Centre. CLEVEDON: Fizz Gallery, Studio 3. CORFE CASTLE: Boilerhouse Gallery, Gallery 41, Morton House Hotel, Village Stores. CORSHAM: Pound Arts. CREWKERNE: Art4All / ArtyCrafty. CROCKERTON: Bull Mill Arts. CROWCOMBE: Halsway Manor. CULLOMPTON: Cullompton Community College. CULMSTOCK: The Strand Stores. DEVIZES: Wiltshire Museum. DORCHESTER: Dorchester Arts, Duke's, Frank Herring & Sons, Gallery on The Square, The Little Keep, Vinyl Van. EAST LAMBROOK: East Lambrook Manor Gardens. EXETER: Academy of Music, Barnfield Theatre, The Cavern, Corn Exchange, Exeter School of Art, Glorious Art Cafe, Phoenix Arts Centre, Royal Albert Memorial Museum, Southgate Gallery. FROME: Bat Print Studio,

Black Swan Arts, Cheese and Grain, Fiat Lux, Merlin Theatre, Mount, Raves From The Grave, Rook Lane Arts, Rise Centre, Whittox Gallery. GILLINGHAM: Bowridge Gallery, The Idea Works, Slade Centre. GLASTONBURY: Abbey Muse Gallery, Bocabar, Facets Of Avalon, Glastonbury Galleries, Heart Of The Tribe Gallery, Red Brick Building, Rural Life Museum. HEMYOCK: Healthy Living Centre. HESTERCOMBE: Hestercombe Gallery. HIGHCLIFFE: In The Frame. HOLTON HEATH: Holton Lee. HONITON: The Beehive, Boston Tea Party, Hybrid Gallery, School Of Art And Wellbeing, Strummer Pink, Thelma Hulbert Gallery. ILMINSTER: Courtyard Gallery Cafe, Dillington House, Ilminster Arts Centre. KEYNSHAM: Chocolate Quarter. LANGPORT: 4 Every Cloud, Art Tea Zen, Hanging Gallery, Shakspeare Glass. LYME REGIS: Blue Lias, Coombe Street Gallery, Fine Art Framing, Marine Theatre, Studio 19. LYTCHETT MINSTER: Barn Cafe, Courtyard Craft Centre. MARLBOROUGH: Framemakers, Rabley Contemporary Drawing Centre. MARTOCK: Martock Gallery Yandles Cafe. MILTON ABBAS: Dorset Crafty Barn, Luccombe Hub. MINEHEAD: Courtyard Framing, Leo Davey Gallery, Regal Theatre. MORCOMBELAKE: Artwave West. MUCHELNEY: John Leach Gallery. NEW MILTON: Forest Arts. NEWTOWN: R. C Arts. NORTH CURRY: Community Café. OTTERTON: Otterton Mill. PENN HILL: Josephine Wall Shop. PEWSEY: McNeill Gallery. POOLE: Arts University Bournemouth, Boiler Room Records, Bournemouth University Atrium Gallery, Guildhall Gallery, Lighthouse, Gallery Upstairs, Originals, Poole Museum, Poole Violins, Towngate Gallery And Framing. PORLOCK: Churchgate Gallery, Melody Art. PORTLAND: B-Side Outpost, White Stones. POUNDBURY: Gallery On The Square, Store 6. SALISBURY: City Hall, Fisherton Mill, Framemakers, Noble Art Supplies, Salisbury Arts Centre, Salisbury Museum, Salisbury Playhouse, Studio 53, Wiltshire Gallery, Young Gallery. SEATON: Arts Café, Savooni Art Gallery. SEAVINGTON: Village Shop. SHAFTESBURY: The Cygnet, Grosvenor Hotel, Pictureframes, Shaftesbury Arts Centre. SHEPTON MALLET: One Craft Gallery. SHERBORNE: Artslink, Elementum Gallery, New Digby Hall, Old Barn Framing Gallery, Winstone's. SIDMOUTH: East Devon Art Academy, Flo and Us, Kennaway House, Winstone's. SOMERTON: ACE Arts, Gifted Company & Gallery Coffee Shop. SOUTH CADBURY: Chapel Cross Tea Rooms. SOUTH PETHERTON: David Hall. STALBRIDGE: Dike & Sons. STOBOROUGH: Furzebrook Studios. STOKE ST GREGORY: Willow & Wetlands Centre. STOURHEAD: First

View Gallery. STREET: Millfield School Atkinson Gallery, Strode Theatre. STURMINSTER NEWTON: The Exchange, Poet's Corner, Wessex Photographic. SWANAGE: 4Matt Framers and Gallery, Durlston Castle, Hollinghead Studio Gallery, L'Artishe Gallery, Mowlem Theatre, Mulberry Bush Gallery, Purbeck New Wave Gallery, Quarr Gallery, Sansom Gallery. SYMONDSBURY: Sou'-Sou'-West. TAUNTON: Brewhouse Theatre, CIC CIC, Fine Art And Framing, Jane Amour, Mount Somerset Hotel, Quantock Art And Framing, Queen's College, Tacchi-Morris Arts Centre, University Centre Somerset. TINCLETON: Tincleton Gallery. TISBURY: Messums Wiltshire. TIVERTON: Lantic Gallery. TROWBRIDGE: Arc Theatre, Court Street Gallery, Drawing Projects, The Lamb, Trowbridge Arts, Trowbridge Museum. VERWOOD: Campbell & Rose Gallery, The Hub. WAREHAM: Creative Gallery, Priory Hotel, Rex Cinema. WATCHET: East Quay, Watchet Gallery. WELLINGTON: Old Brick Workshop. WELLS: A2 Gallery, Andelli Art, Bishop's Eye, Good Earth, Heritage Courtyard Studios, Somerset Guild of Craftsmen Gallery and Shop. WEST BAY: Sladers Yard. WEST COKER: Lanes, Old School Room. WESTHAY: Somerset Crafts. WESTON-SUPER-MARE: Frame Station, Playhouse, Weston College. WEYMOUTH: Weymouth College, Weymouth Pavilion. WILLITON: Breeze Art Gallery. WIMBORNE: Allendale House, Square Records, Walford Mill Craft Centre. WINSCOMBE: Sidcot Arts Studio. WIVELSCOMBE: Community Office. WOODBURY: Woodbury Studio Gallery. WORTH MATRAVERS: Burngate Stone Centre. WRINGTON: Barleywood Studios. YEOVIL: Octagon Theatre, Yeovil Art Space. YETMINSTER: Old School Gallery.

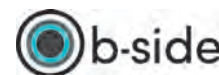
Plus selected TOURIST INFORMATION CENTRES and LIBRARIES throughout Wessex

EVOLVER SPONSORS

ACE Arts
Acoustic Distribution
Artcetera
Aztec Media
B-Side
Black Swan Arts
Boilerhouse Gallery
Bridport Arts Centre
The Creative Gallery
Dorset Visual Arts
East Quay
Fisherton Mill
Gallery on the Square
Heart of the Tribe Gallery
Lyme Bay Arts
Mount
Project Factory
Shaftesbury Arts Centre
The Slade Centre
Sladers Yard
Somerset Art Works
Tincleton Gallery
The Vanner Gallery
Wiltshire Creative



ARTCETERA



Boilerhouse Gallery

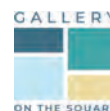
BRIDPORT ARTS CENTRE



DORSET VISUAL ARTS



FISHERTON MILL



HEART OF THE TRIBE GALLERY



Shaftesbury Arts Centre



SLADERS YARD



Tincleton Gallery



The Electric Broom Cupboard presents

Orchard Popfest

South Somerset

The Monochrome Set
The June Brides
The Chesterfields
Special Guests
Palooka 5
Helen McCookerybook
The Rhynes

Saturday 16 July 2022

DJ Johnny Dee
DJ Alan Flint
DJ Andrew Perry

North Down Farm, Crewkerne, TA18 7PL
Gates 12noon, live music from 2pm, curfew 11pm
Bar and food



Tickets from Eventbrite: £20 / under 16s free / camping £10



Plus!
Vinyl Van
record stall



ELECTRIC
BROOM
CUPBOARD



Follow
orchardpopfest
on Instagram

