

# EVOLVER MAGAZINE

THE FREE WESSEX ARTS AND CULTURE GUIDE







Supported using public funding by  
**ARTS COUNCIL  
ENGLAND**



Contains Art CIO  
Charity Number: 1193931

### **BETTER THAN THIS**

21.05.2022 - 31.08.2022

Kathy Hinde, Amy Howden-Chapman, Liv Torc

@eastquaywatchet

eastquaywatchet.co.uk

Open daily 10am-6pm

# David Hockney Love Life

THE  
HOLBURNE  
MUSEUM

[WWW.HOLBURNE.ORG](http://WWW.HOLBURNE.ORG)

## Drawings 1963–1977

27 May to 18 September

The exhibition has been  
generously supported by:

**BLAVATNIK**  
FAMILY FOUNDATION

# EVOLVER MAGAZINE 126

July and August 2022



## Exhibit A

### Shannon Ribbons: Wilkswood Train

*Digital Composite*

ARTIST'S STATEMENT: "I merge photographs and film footage with charcoal drawings, virtual models, textures and digital sketches. I am fascinated by the idea of parallel dimensions, realities that mirror and sometimes seem to intrude into our own. At the moment I am very focused on issues concerning our relationship with the environment and what is at stake as we move ever forward into a future increasingly detached from nature. I am inspired by - and greatly admire - all the amazing people who are valiantly fighting to hold the line."

#### 'INTO THE WOODS'

**25 July - 7 August:** Fine Foundation Gallery, Durlston Country Park, SWANAGE, BH19 2JL. 10am - 5pm.  
[durlston.co.uk](http://durlston.co.uk) / [intothewoodsart.uk](http://intothewoodsart.uk).

the  
**lost words**

JACKIE MORRIS & ROBERT MACFARLANE


26 March to 18 September 2022  
Russell-Cotes Art Gallery & Museum

Exhibition organised by  
**Compton Verney**  
ART GALLERY & PARK

**RUSSELL-COTES**  
1922-2022

East Cliff, Bournemouth  
Dorset BH1 3AA  
[www.russellcotes.com](http://www.russellcotes.com)





**Chippenham Museum**  
Chippenham Town Council

# Robin Tanner


## From Goldsmiths to the Great Depression

30 July - 8 October, free entry  
Mon - Sat, 10am - 4pm  
[chippenham.gov.uk/chippenham-museum](http://chippenham.gov.uk/chippenham-museum)

THEATRE DANCE MUSIC FILM SPOKEN WORD COMEDY EXHIBITIONS TAKE PART

**BRIDPORT ARTSCENTRE**

**THE ALLSOP GALLERY IS OPEN!\***



Visit us online at [www.bridport-arts.com](http://www.bridport-arts.com) or call 01308 424901.  
\*The Gallery is open Tuesdays - Saturdays, 10am to 4pm. FREE ENTRY.

explore the forest with...

Rodrigo Arteaga / Mark Garry  
Alma Heikkilä / Eva Jospin  
Jumana Manna / Zakiya McKenzie  
David Nash / Maria Nepomuceno  
John Newling / Rosa Nguyen  
Ben Rivers / Ai Weiwei  
Hildegard Westerkamp

Tuesday — Sunday  
11am to 6pm  
Free entry

**9 July —  
2 October  
2022**

# FOREST: WAKE THIS GROUND

**ARNOLFINI**  
EST. 1961

16 NARROW QUAY, BRISTOL BS1 4QA  
[@arnolfiniarts](https://arnolfiniarts.org.uk) [arnolfini.org.uk](http://arnolfini.org.uk)

UWE Bristol

BRISTOL COUNCIL

BRISTOL ARTS COUNCIL  
ARTS COUNCIL ENGLAND

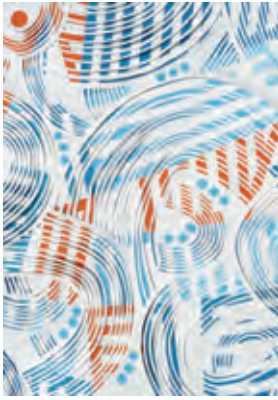
ACBMT  
Artists' Company Bristol Museum Trust

Jumana Manna — Cress Pollination, 2018. Wild Relatives, 2018. Photo: Murta Wood. Courtesy of the artist.



# Evolver Prize 2022

## Top 50



ALI CHISHOLM  
*Papercut*



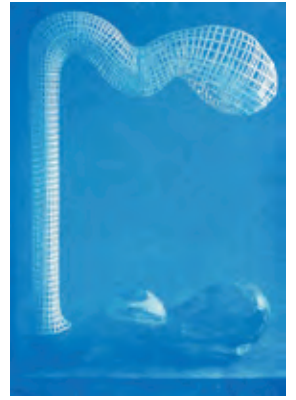
ANNE REYNOLDS  
*Sweet Pea*



BEATRICE CORSETTI  
*Black Swan in a Green Lake*



BRENDAN BUESNEL  
*Shoredance*



CHRIS DUNSEATH  
*Cherry Reflection*



CLARE WILSON  
*Hidden #3 (Making the Private Public)*



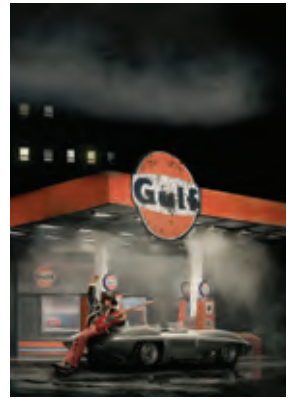
CLIVE BIRNIE  
*In We Go*



DAVID SKIDMORE  
*///trudges.tracks.dance*



EMMA PICKERING  
*Form 9 Black*



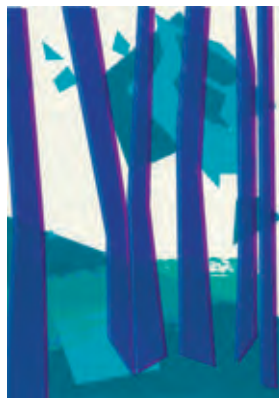
ESMÉ LLOYD  
*Black Sky City #17*



FAYE SUZANNAH  
*Our Garden VII*



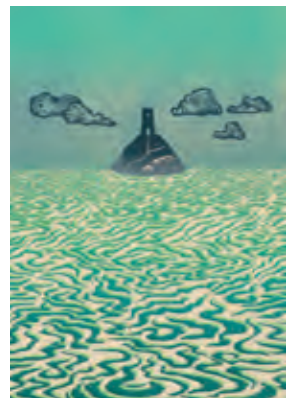
GARY DICKINS  
*Lost Horizons*



GEORGINA TOWLER  
*B.L.U.E. (Because Light Understands Everything)*



GEORGINA TOWLER  
*T.R.E.E. (Touch Really Explains Everything)*



GEMMA TRICKEY  
*The Flood*



GRACE CRABTREE  
*Mapped Landscape III*



HELEN BARFF  
*Stack*



HELEN BRASHER  
*Rock Ledges*



HENNY BURNETT & MARTIN URMSON  
*Single-Use*



JACK GREENWOOD  
*Stella*



Evolver Prize 2022



JACKIE CURTIS  
*The Trouble with Daffodils*



JACKIE CURTIS  
*Beach Combing 4*



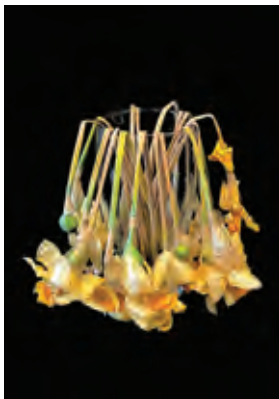
JANE BARNARD  
*Time to Thrive*



JOANNA BRIAR  
*View from the Orchard*



JOHN GAMMANS  
*Wind Conceptualization No. 122*



KEITH ROGERS  
*Never Say Die*



LUCY HAWKINS  
*Tin Mine*



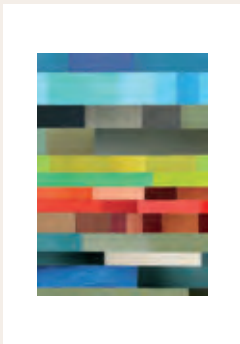
LUCY HAWKINS  
*Village View*



LUCY HAWKINS  
*Washing Day*



MALCOLM ASHMAN  
*Cake*



EVOLVER PRIZE 2022 EXHIBITION

2 - 30 July

Ace Arts, Market Place, Somerton, Somerset TA11 7NB • Tuesday - Saturday 10am - 5pm • 01458 273008 • [acearts.co.uk](http://acearts.co.uk)





# Evolver Prize 2022



MELLONY TAPER  
*Beacon (Renamed City)*



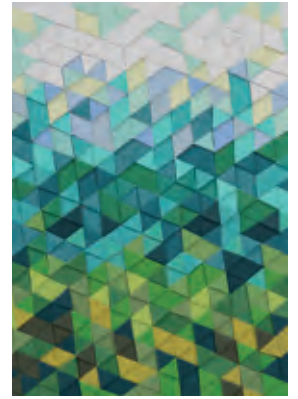
MICHAEL COPSEY  
*Brick Tree*



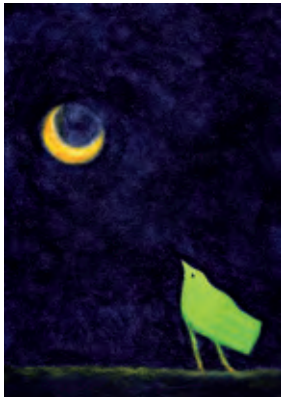
MICHAEL COPSEY  
*Fence*



MICHAEL TARR  
*Bertoia Blue*



NAOMI KENDALL  
*Sway*



PERCY LIZZARD  
*Green Bird (Moonlight)*



PRISCILLA TRENCHARD  
*Encounter*



PRISCILLA TRENCHARD  
*Reflection*



RÉMY LLOYD  
*Oil*



RUTH ANDER  
*Colour and Sound*



SARAH JANE ROSS  
*(Enclosure Acts) Progress?*



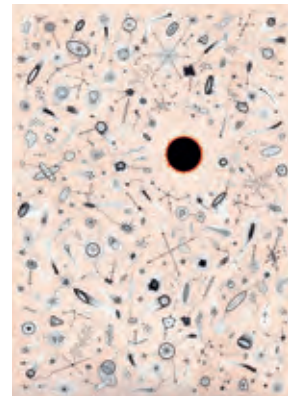
SARAH TURNBULL  
*Walking Across Fragments of Ancient Memory*



SUSAN GRADWELL  
*Falling Shadows*



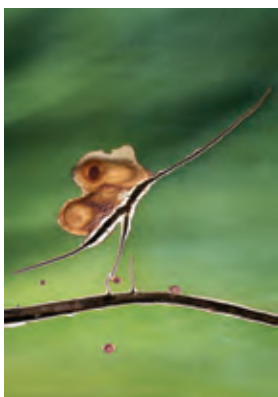
TIM DUKE  
*Lattice One*



TIM EDGAR  
*Everything is Connected*



TIM EDGAR  
*Rising / Falling No. 2*



TRACEY CALDER  
*Plant Scars #3*



YVONNE MORTON  
*Harbour*



YVONNE NICOLA  
*Escape 1*



ZOE BARKER  
*George*

## EVOLVER PRIZE 2022 SELECTION PANEL

**Simon Barber** (Editor, Evolver) • **Leo Davey** (Winner, Evolver Prize 2020)  
**Nina Gronw-Lewis** (Artistic Director, Ace Arts) • **Jonty Sale** (Photographer)



# Visual Arts

July and August 2022



'STORM BEACH V' (Photo-collage, mixed media on paper, 88 x 88 cm, 2019)

## Tim Harrison

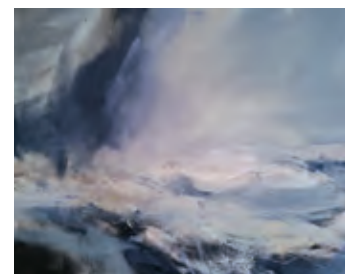
"For the first time, renowned sculptor Tim Harrison's respective disciplines of sculpture and drawing come together in a series of small paper structures rendered with graphic markings. Alongside these sculptures, a series of larger works on paper bring Tim's drawing to the fore in a series of beautiful and lyrical images inspired by geology."

**15 July - 20 August:** The Vanner Gallery, 45 High Street, SALISBURY, SP1 2PB. [vannergallery.com](http://vannergallery.com).

## IAN MCKEEVER AND MICK MASLEN

**Until 1 July**

The Young Gallery, Salisbury Library, Market Place, SALISBURY, SB1 1BL. Monday and Tuesday 9am - 7pm, Wednesday - Saturday 9am - 5pm. [younggalleriesalisbury.co.uk](http://younggalleriesalisbury.co.uk).



## JANETTE KERR

**Until 2 July**

Sladers Yard, WEST BAY, Bridport, DT6 4EL. Wednesday - Saturday 10am - 4.30pm. 01308 459511 / [sladersyard.co.uk](http://sladersyard.co.uk).

Above: 'Cold wind across the sea, Shetland' (Oil on canvas, 75 x 95 cm)

## 'ISLAND LIFE'

**Until 3 July**

Salisbury Arts Centre, Bedwin Street, SALISBURY, SP1 3UT. Tuesday - Saturday 10am - 3pm. [wiltshirecreative.co.uk](http://wiltshirecreative.co.uk). "This exhibition will bring together artists who address the political, social or economic conditions of living on islands."

## FRANCES WATTS: 'WHILE I STAND AND LOOK'

**Until 3 July**

Heart of The Tribe Gallery, 74 High Street, GLASTONBURY, BA6 9DZ. 11am - 5pm. 01458 832167 / [heartofthetribe.com](http://heartofthetribe.com). Paintings.

## SALLY MALTBY: 'MAINLY FLOWERS OF THE WAYSIDE'

**Until 3 July**

Sou'-Sou'-West Arts Gallery, Symondsby Estate, BRIDPORT, DT6 6HG. 10.30am - 4.30pm. 01308 301326 / [sousesouwest.co.uk](http://sousesouwest.co.uk). "Photography and digital art."



**CAFÉ SLADERS** seafood restaurant

**SLADERS YARD**

Contemporary Art & Craft Gallery West Bay, Bridport DT6 4EL

Open Weds - Sat 10am - 4.30pm. Café also open Sundays

t: 01308 459511 @sladersyard View all work online at [sladersyard.co.uk](http://sladersyard.co.uk)

ALEX  
LOWERY  
paintings  
AKIKO  
HIRAI  
ceramics  
PETTER  
SOUTHALL  
furniture

Opens 9 July  
- 11 September 22  
L: AL Portland 160  
R: AH Moon Jar 'wings'





## LUCINDA BURGESS: 'ON REPETITION'

**Until 3 July**

Black Swan Arts, 2 Bridge Street, FROME, BA11 1BB. Monday - Sunday 10am - 4pm. 01373 473980 / blackswanarts.org.uk. "Sculptural works in steel, paper and glass exploring the nature of materiality."

## EAST DORSET POTTERS

**Until 3 July**

Walford Mill Crafts, Knobcrook Road, WIMBORNE, BH21 1NL. Wednesday - Saturday 10am - 5pm, Sunday 11am - 4pm. 07979 812083.

## SABINE ABRAHAMS: 'LIVING IN INTERESTING TIMES'

**Until 5 July**

Shaftesbury Arts Centre, Bell Street, SHAFTESBURY, SP7 8AR. Monday - Saturday 10am - 4pm. 01747 855243 / shaftesburyartscentre.org.uk.

## 'FOOD AND FLOWERS'

**Until 8 July**

Hatch Gallery, 7a Church Street, CHRISTCHURCH, BH23 1BW. Tuesday - Saturday 11am - 4pm. hatchgallery.co.uk.

## GARY COOK: 'WEND - THE STOUR FROM SOURCE TO SEA'

**Until 9 July**

The Art Stable, CHILD OKEFORD, near Blandford, DT11 8HB. Thursday - Saturday 10am - 3pm. 01258 863866 / theartstable.co.uk.



## BRIDPORT ARTS SOCIETY: 'SUMMER OF 22'

**Until 10 July**

Sou'-Sou'-West Arts Gallery, Symonds Estate, BRIDPORT, DT6 6HG. 10.30am - 4.30pm. 01308 301326 / sousouwest.co.uk.

Above: Di Mary Alice 'Across the Fields'



'KAFENEION, TINOS'

## Lucy Willis

"Somerset-based artist, Lucy Willis, is a printmaker and watercolourist, who specialises in portraying exotic locations where the scenes are imbued with her sense of light and colour. Lucy finds her inspiration on location and although she has connections to Greece, living and working there for a time, she has travelled extensively around Asia, Africa and the Middle East, where she leads painting groups capturing unique moments of life in those distant lands. This exhibition will showcase Lucy's watercolours and give us a taste of the beauty she finds during her travels over a range of locations."

**Until 30 July:** The Courthouse Gallery, Market Place, SOMERTON, TA11 7LX. Wednesday - Saturday 10am - 5pm. 01458 273110 / courthousegallery.uk.

## 'CELEBRATED WOMEN OF FROME'

**Until 10 July**

Frome Heritage Museum, 1 North Parade, FROME, BA11 1AT. Tuesday - Saturday 10am - 2pm. 01373 454611.

## 'PHOTO|FROME'

**Until 15 July**

Gallery At The Station, Station Approach, FROME, BA11 1RE. Monday - Saturday 10am - 4pm. 07970 462395.

## EDWARD KELLY: '8 WEEKS IN SERIFOS'

**Until 15 July**

Artwave West, MORCOMBELAKE, DT6 6DY. Wednesday - Saturday 10am - 5pm. artwavewest.com.

## 'CELEBRATIONS'

**Until 16 July**

Yeovil Art Space, 23 Vicarage Walk, YEOVIL, BA20 1EU. Wednesday - Friday 10am - 4pm, Saturday 10am - 5pm. yeovilartspace.uk.

## 'POETS, PLUMBERS AND POLITICIANS'

**Until 19 July**

Arundells, 59 Cathedral Close, SALISBURY, SP1 2EN. Friday - Tuesday 11am - 5pm. £3.50. 01722 331440 / arundells.org. "Renowned sculptor Martin Jennings presents maquettes of his statues of famous national figures alongside the stories behind their full-size realisations."



black  
swan arts  
open  
2022

exhibition  
15 July - 11 September

all original art for sale  
under £1000

PAVERS & WIFE

LOTTE

M.Y.

Brude Munro's Studio

BROTHERS

BLACK SWAN ARTS

galleries | round tower | studios | shop | cafe

www.blackswanarts.org.uk

OPEN: Mon - Sun 10am - 4pm, FREE ENTRY

Registered Charity No. 292463

2 Bridge Street, Frome BA11 1BB | 01373 473980

@ f t





Great art and  
the best coffee



**The Slade Centre, The Square, Gillingham, Dorset SP8 4AY**  
Tuesday - Saturday 9am - 4pm • 07775 431652 • [sladecentre.com](http://sladecentre.com)

9 & 10 JULY 2022 ————— 3PM – 8PM

# POP UP EXHIBITION

by local artists & makers

photography, artwork & homewares



come visit us

Broadstone Business Centre  
19B Moor Road, unit 23,  
Broadstone BH18 8AZ

[www.joelenesstudio.com/events](http://www.joelenesstudio.com/events)

# SUMMER GROUP EXHIBITION

An exhibition showcasing new work by the gallery's Core Artists

**7th JULY - 21st AUGUST**

Shelley Dyer-Gibbins  
Rowena Draper  
Kim von Coels  
Sue Cresswell  
Ruary Allan  
Wil I Om  
Aga Kubish  
Leonard Green  
Emma Housley  
Frank Harwood



*Since I talked to my baby*  
Leonard Green

Penelope O'Gara  
Sara Trenchard  
Monika Miller  
Jon Minshull  
Jim Pilston  
Gail Reid  
Inigo Rose  
Ash Noakes  
Frances Watts  
Melanie Thompson

GALLERY OPEN DAILY 11.00 - 17.00  
(CLOSED WEDNESDAYS)



HEART OF  
THE TRIBE  
ART GALLERY

01458 832167  
[Gallery@HeartofTheTribe.com](mailto:Gallery@HeartofTheTribe.com)  
[www.HeartofTheTribe.com](http://www.HeartofTheTribe.com)  
[f @HeartofTheTribeGallery](https://www.instagram.com/HeartofTheTribeGallery)  
74 High Street, Glastonbury, BA6 9DZ

**EVENTS AT THE GALLERY INCLUDE:**  
CREATIVE SOCIALS • WORKSHOPS  
POETRY NIGHTS • LIFE DRAWING  
ART TALKS • DEMONSTRATIONS  
AND MORE  
SCAN CODE FOR MORE INFO



ART | ENERGY | COMMUNITY



## 'FRESH!'

**Until 23 July**

Thelma Hulbert Gallery, Dowell Street, HONITON, EX14 1LX.  
Wednesday - Saturday 10am - 5pm.  
01404 45006 / thelmahulbert.com.  
"New works by leading artists and creatives from Devon Artist Network."



## MOISH SOKAL: 'POSTCARDS FROM KENYA'

**Until 23 July**

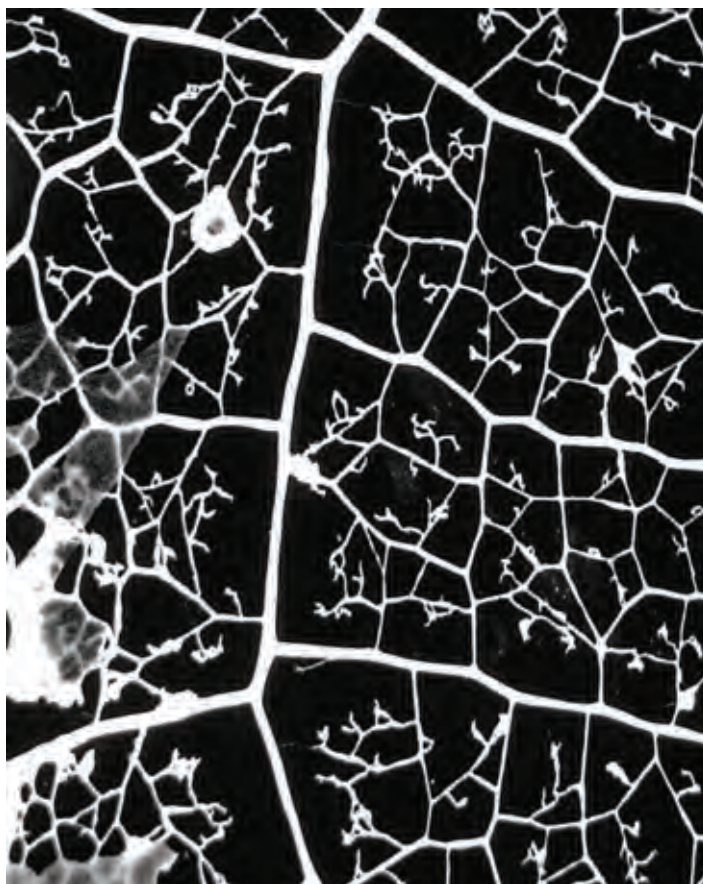
Malthouse Gallery, East Lambrook Manor Gardens, Silver Street, EAST LAMBROOK, South Petherton, TA13 5HH. Tuesday - Saturday 10am - 5pm. 01935 881350 / moishsokal.co.uk. "New work inspired by a recent trip to Kenya showing the wild animal kingdom and its people, in contrast to local scenes of peaceful Somerset."



## KAROL KULIK

**Until 24 July**

Rotunda Gallery, Lyme Regis Museum, Bridge Street, LYME REGIS, DT7 3QA. Tuesday - Saturday 10am - 5pm, Sunday 10am - 4pm. £5.95. 01297 443370 / lymeregismuseum.co.uk.  
Above: 'Kent Garden'



## Better Than This

"The third exhibition at East Quay invites you to explore profound questions of climate and change. Introducing the work of three artists, Kathy Hinde, Amy-Howden-Chapman and Liv Torc, who present new works that reflect on our relationship to the earth and nature and to give voice to the possibility that we can be better than this."

**Until 31 August:** East Quay, WATCHET, TA23 0AQ. 10am - 6pm. 01984 263103 / eastquaywatchet.co.uk.

## 'SHADES OF GREEN'

**Until 24 July**

Central Gallery, Royal United Hospitals Bath, Combe Park, BATH, BA1 3NG. Monday - Sunday 8am - 8pm. 01225 824987 / artatruh.org. "A group of distinguished artists respond to the beautiful Somerset landscape near Englishcombe in their unique and personal ways."

## 'THREE VIEWS OF BATH'

**Until 24 July**

Central Gallery, Royal United Hospitals Bath, Combe Park, BATH, BA1 3NG. Monday - Sunday 8am - 8pm. 01225 824987 / artatruh.org. Work by Nigel Gardner, Josephine Tsegaye, Jason Dorley-Brown and Emma Taylor.

## 'LISA MALYON DRAWS AT NO. 1 HARBOURSIDE'

**Until 25 July**

No. 1 Harbourside, 1 Canon's Road, BRISTOL, BS1 5UH. Monday and Tuesday 4 - 11pm, Wednesday and Thursday 12noon - 11pm, Friday 12noon - 1am, Saturday 10am - 1am, Sunday 10am - 8pm. lisamalyondraws.co.uk.

## ESMÉ LLOYD: 'BLACK SKY CITY'

**Until 31 July**

f4 Photography Gallery, 4 The Clifton Arcade, BRISTOL, BS8 4AA. Monday, Wednesday, Thursday and Friday 10am - 5.30pm, Saturday 10am - 6pm, Sunday 11am - 4pm. f4clifton.co.uk. "A transient musician is tracked on his night odyssey across '60s America."

## 'A KIND OF BLUE'

**Until 22 August**

Grain Barge, Hotwell Road, BRISTOL, BS8 4RU. 11am - 11pm. tobaccofactory.com.

## ROBERT MACFARLANE AND JACKIE MORRIS: 'THE LOST WORDS'

**Until 18 September**

Russell-Cotes Art Gallery and Museum, East Cliff, BOURNEMOUTH, BH1 3AA. Tuesday - Sunday 10am - 5pm. £7.50 / £4. russellcotes.com. "Enchanting exhibition featuring 20 acrostic spell poems and 50 beautiful original watercolour paintings."



## 'INSECT ODYSSEY'

**Until 25 September**

Salisbury Museum, The Kings House, 65 The Close, SALISBURY, SP1 2EN, 10am - 5pm. 01722 332151. "An insight into the insect world through the visual responses and interpretations of contemporary artists."



Midnight Pool by Julie Winsor

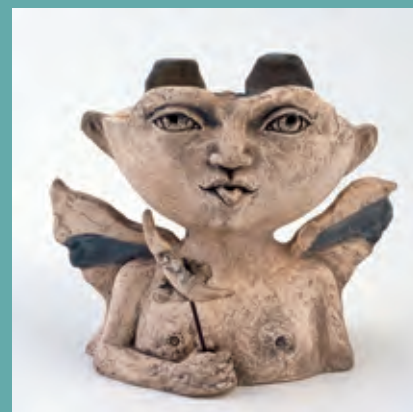
## BOILERHOUSE GALLERY

HIGH QUALITY ART AND CRAFT  
IN A UNIQUE SETTING

Open throughout the year  
Tuesday - Sunday 10-5

POP-UP CAFE  
Friday, Saturday and Sunday

Sandy Hill Lane, Corfe Castle, Dorset BH20 5JF  
boilerhousegallery.co.uk



Moonstar Angel by Janet O'Kane





'BROKEN' (Acrylic on canvas, 60 x 60 cm)

## Stephen Powell

After two years of intermittent covid lockdowns, with artists understandably reluctant to welcome people into their studios, a visit to an actual studio and a conversation with an artist face to face emphasised again how vital it is to physically engage with the work, not just view it on a screen. Painter Stephen Powell's house and studio are at the end of a long lane in the heart of the New Forest. An area still unspoiled by unnecessary restrictions on wildlife. Ponies, cattle, pigs, deer, foxes and badgers roam freely, unrestricted by fencing.

If you are looking for labels Powell's work is abstract. A workhorse term to suggest something which references nothing and in reality is used to identify work which does not have a figurative point of reference. Or to put it bluntly, work which people often find difficult to relate to, a position that is often a product of fear of something which they do not wholly understand. Powell admits that subliminally his surroundings may have influenced him but his work is not about what you can see. Rather it is about what is not there about things that are intangible. It is about what you are not seeing: emotion, feelings and concepts.

Powell's work has journeyed, travelling from painting figures, through a stage of reducing those figures to the classic Cezannesque cone, sphere and cylinder through cubist deconstruction of the component parts, to rejecting the figure altogether. He made the transition to abstraction in 1989, feeling that it allowed him to get closer to the subject matter. The American Abstract Expressionists have been a powerful influence, in particular Willem De Kooning, whose painting *Door*



to the River elicited in him a visceral response. He has spent years moving slowly through subtle changes in his visual language, developing a constantly evolving painterly vocabulary.

In simple terms his process involves acrylic paint, masking tape and latex to create marks - but of course it is never that simple. Layers of paint applied with brushes, scrapers, and other tools result in subtle colour shifts. Texture is as significant as colour, and the tactility of his surfaces excites him as much as the layering of paint. Acrylic fulfils his need for speed, he is in a hurry and waiting for paint to dry is not part of his plan. His compositions veer from vigorous expressive mark-making to hard-edged rectangular shapes that tilt at angles, creating breathstopping tensions between the lines that deliberately destabilise the compositions. Gaps between shapes offer tantalising glimpses into infinite space and one of Powell's stated aims is to create a sense of space.

Powell's process is intuitive, starting possibly with a compositional idea. He makes line drawings (more in the nature of plans), mapping out his compositions. When he leafs through these little sketchbooks later they suggest ideas for paintings. Despite this apparent starting point, once he starts to add colour it becomes a conversation between artist and painting and it is the painting that takes the lead role, as time is suspended and he focuses on the moment.

The line from a love song, 'and a thousand kissed passed us by' has recently become a mantra for Powell. The letter x signifying a kiss has become part of his visual language. Written at speed, as x's are on the bottom of a letter, these symbols race across the surface of his canvases, or hover in an ambiguous space. His kisses, drawn in paint, wonky and unruly, dance across the surface or cluster together. They are emblematic of Powell's love affair with painting.

Fiona Robinson

**HAMPSHIRE OPEN STUDIOS 2022**  
**20 - 29 August**

Locations throughout HAMPSHIRE.  
[hampshireopenstudios.org.uk](http://hampshireopenstudios.org.uk)

**[gallerypowell.com](http://gallerypowell.com)**

*Portrait photograph by Paul Close*



# Courthouse GALLERY

Presenting fine art, prints and lithographs  
from internationally renowned artists



Football in Aleppo, Syria. Watercolour 36 x 27.5cm

**LUCY WILLIS** RWA

18 June – 30 July

Wednesday to Saturday 10am to 5pm

Market Place Somerton Somerset TA11 7LX

hello@courthousegallery.uk 01458 273110

[www.courthousegallery.uk](http://www.courthousegallery.uk)



**BRUTON ART SOCIETY**

69th Annual Exhibition



*Affordable Art from the best Regional Artists*

King's Bruton Memorial Hall

BRUTON BA10 0ED

Sat 20 - Sat 27 Aug 2022

10 - 4 daily Free entry

## HESTERCOMBE GALLERY

Contemporary art in reclaimed spaces

28.05.22 – 23.10.22

A Rose is a Rose is a Rose

Brendan Barry, Feral Practice

John Newling, Sophy Rickett

and Marjolaine Ryley

[hestercombe.com/gallery](http://hestercombe.com/gallery) @hestercombegallery

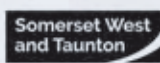


Image: John Newling, The Sky in the Soil, 2021





## Prism @ Atkinson

An Exhibition of International Printmaking

5 September - 6 October 2022

**Atkinson GALLERY**



MILLFIELD, Street, Somerset BA16 0YD • Monday to Thursday • 9.30 a.m. to 5 p.m.  
www.atkinsongallery.co.uk • Tel: 01458 444322 / 444176



### Drawing Courses at The Old School Queen Camel

STRUCTURED DRAWING COURSES OVER 10 EVENINGS OR AFTERNOONS  
FOR BEGINNERS AND THOSE WISHING TO IMPROVE

Courses starting in September:

**An Introduction to Drawing** and **Drawing for Improvers**

*Covering a range of subjects and styles, topics covered include mark making, composition, the use of light and shade, and the use of various materials.*

Further information: Call **Andrew Palmer** on **07970 556684**  
or email [afpalmer@gmail.com](mailto:afpalmer@gmail.com)

*Individual tuition also available. Studio visitors welcome by appointment.*

[afpalmer.co.uk](http://afpalmer.co.uk)



### Percy Lizzard and Special Guests

Contemporary art and craft  
in a variety of media from  
talented resident and guest  
exhibitors

**1st July - 30th August**

10am - 5pm

**Studio 3 Gallery**

Clevedon Craft Centre  
Moor Lane, Clevedon,  
Somerset BS21 6TD

07557 331967

[studiothree.art](http://studiothree.art)

**Wessex  
Museums**

**28 MAY – 30 OCT 2022**

# HARDY'S WESSEX

The landscapes that inspired a writer

**DORSET MUSEUM**

**SALISBURY MUSEUM**

**POOLE MUSEUM**

**WILTSHIRE MUSEUM**

## A major exhibition across four museums

The largest collection of Thomas Hardy objects ever  
displayed at one time. Star loans from national collections,  
including Hardy's handwritten manuscripts.

[wessexmuseums.org.uk/HardysWessex](http://wessexmuseums.org.uk/HardysWessex)

Tess of the D'Urbervilles  
Manuscript © British  
Library Board.



Supported using public funding by  
**ARTS COUNCIL  
ENGLAND**

Art Fund



**Battens**  
SOLUTIONS



Made possible with  
**Heritage  
Fund**



## CAZ SCOTT

**Until 30 September**

Museum of Jurassic Marine Life, KIMMERIDGE, BH20 5EP. 10am - 5pm. 01929 270000 / cazscott.art. "Paintings inspired by the landscape, rocks and fossils of the Jurassic coast around Purbeck."

## 'CONVERSATIONS WITH COLOUR'

**1 - 3 July**

Hours, 10 Colston Yard, BRISTOL, BS1 5BD. Friday 6 - 9pm, Saturday and Sunday 11am - 4pm. 07766 054659 / hours-space.com. "Large abstract canvases full of energy and colour."

## 'FLOTSAM'

**1 - 7 July**

Malthouse Gallery, Town Mill Courtyard, LYME REGIS, DT7 3PU. 10.30am - 6pm. 07811 102216 / alisonsheltonbrown.art. "In a post-pandemic world, we look to find a sense of unity, coherence and positivity amongst the tatters of uncertainty, and division. Ten artists and creatives respond to this theme."



## JENNY GRAHAM: 'LAND OF THE SUMMER PEOPLE'

**1 July - 4 September**

The Whittox Gallery, Whittox Lane, FROME, BA11 3BY. Tuesday - Saturday 9am - 4pm. 07712 523734 / thewhittoxgallery.com. "Texture, surface, colour, painted, dragged, scraped slowly become a place. Memory and reality merge, some parts important, others less so. The viewer is led into and through the landscape, invited to see what I see."



MARGARET MOORE

## Collecting the World

"An exhibition of contemporary art and craft responses to the home and collections of Merton and Annie Russell-Cotes by Quay Crafts, an Isle of Wight based group of professional artists and makers. In celebration of the Russell-Cotes Museum centenary, nine artists have created work using a wide range of media encompassing textiles, ceramics, paper, print, mosaic and photography. These will be displayed throughout the historic house, alongside the objects and settings that inspired their work. Quay Crafts is a long-established group with a record of similar projects to their name. Exhibitions at Osborne House, Dimbola Lodge, the home of photography pioneer Julia Margaret Cameron, and Carisbrooke Castle are particular highlights in the group's history."

**Until 16 October:** Russell-Cotes Art Gallery & Museum, East Cliff Promenade, BOURNEMOUTH, BH1 3AA. £7.50 / £4. 01202 128000 / russellcotes.com / quaycrafts.co.uk.

## FROME OPEN ART TRAIL

**2 - 10 July**

Various locations in and around FROME, Somerset. 11am - 5pm. 07966 300293 / frome-open-art-trail.co.uk.

## MARLBOROUGH OPEN STUDIOS

**2 - 24 July**

Locations in and around MARLBOROUGH, Wiltshire. marlboroughopenstudios.co.uk.

## LINDA CHEW: 'PORCELAIN DELIGHTS'

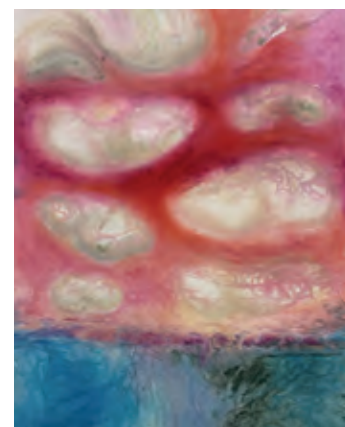
**2 - 31 July**

The Creative Gallery, St John's Hill, WAREHAM, BH20 4NB. 10am - 5pm. creativegallerywareham.co.uk. "An exploration of patterns in nature and landscape as decoration on porcelain vessels."

## 'RECREATE'

**2 July - 13 August**

Fisherton Mill, 108 Fisherton Street, SALISBURY, SP2 7QY. Monday - Friday 10am - 5pm, Saturday 9.30am - 5.30pm. 01722 415121 / fishertonmill.co.uk. "Exhibition of reclaimed and recycled artwork."



## 'SHARDS OF MEMORY'

**4 - 10 July**

Sou'-Sou'-West Arts Gallery, Symonds Estate, BRIDPORT, DT6 6HG. 10.30am - 4.30pm. 01308 301326 / sousouwest.co.uk. "TG Freeson works with waterbased colours on paper to show their technical research on the interaction of light and colours, as well as the intimate study of their memories."

Dates for your diaries

# Somerset Art Weeks Festival 2022 24 September - 9 October

somersetartworks.org.uk







'PORTLAND 167' (Oil on canvas, 55 x 140 cm, 2022)

## Alex Lowery: Picturing

"Recent paintings and drawings."

**9 July - 11 September:** Sladers Yard, WEST BAY, Bridport, DT6 4EL. Wednesday - Sunday 10am - 4.30pm. 01308 459511 / sladersyard.co.uk.

### 'STITCHED'

**4 - 17 July**

Sou'-Sou'-West Arts Gallery, Symonds Estate, BRIDPORT, DT6 6HG. 10.30am - 4.30pm. 01308 301326. "Sou'-Sou'-West Arts' first dedicated textiles exhibition, providing a platform for five specially selected independent designers from Devon and Dorset."

### 'NO-THING / WATERFRONT'

**4 - 17 July**

Sou'-Sou'-West Arts Gallery, Symonds Estate, BRIDPORT, DT6 6HG. 10.30am - 4.30pm. 01308 301326 / sousouwest.co.uk. "This exhibition brings together the thoughts and ideas of two artists, Linda Ashe and Diana Pilcher, in the form of sculptural installation, hangings, drawings and prints. The work shown in 'Waterfront' offers thoughts and ideas about space, light and movement, and 'No-thing' explores ideas about presence and absence; interior and exterior."

### ELLIE COATES

**4 July - 15 August**

The Snug, Tobacco Factory Raleigh Road, BRISTOL, BS3 1TF. 10am - 11pm. tobaccofactory.com.

### WALKING FEET QUILTERS

**6 - 12 July**

The Gallery, Shaftesbury Arts Centre, Bell Street, SHAFTESBURY, SP7 8AR. Monday - Saturday 10am - 4pm. 01747 855243. "Kate Pickard and friends show exquisite work from the last 3 years."

### EXETER CRAFT FESTIVAL

**7 - 9 July**

Exeter Cathedral, EXETER. exetercraftfestival.co.uk. "A three day celebration of the very best Wessex artists and makers."

### SUMMER GROUP EXHIBITION

**7 July - 21 August**

Heart of The Tribe Gallery, 74 High Street, GLASTONBURY, BA6 9DZ. 11am - 5pm. heartofthetribe.com.

### SUMMER EXHIBITION 2022

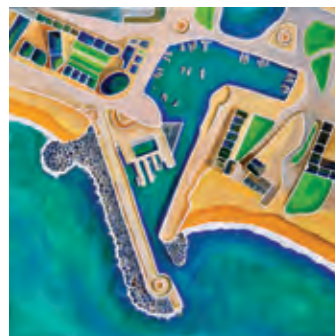
**8 July - 2 September**

Hatch Gallery, 7a Church Street, CHRISTCHURCH, BH23 1BW. Tuesday - Saturday 11am - 4pm. hatchgallery.co.uk.

### POP UP ART MARKET

**9 July**

United Church, Bell Street, SHAFTESBURY, SP7 8AL. 10am - 4pm. 01747 229651. "Paintings, pottery and felting."



### 'COLOUR LINE & THREAD 2022'

**9 - 27 July**

Malthouse Gallery, Town Mill, Mill Lane, LYME REGIS, DT7 3PU. 10am - 5pm. 01297 444111. "Paintings by Hilary Buckley and Russell Coulson, plus photography by James Loveridge."

### 'EARTH: DIGGING DEEP IN BRITISH ART 1781 - 2022'

**9 July - 11 September**

Royal West of England Academy, Queen's Road, Clifton, BRISTOL, BS8 1PX. Tuesday - Saturday 10am - 5pm. £8.90. rwa.org.uk. "This exhibition goes deep beneath the earth, exposing the core materiality of its elements."



### AKIKO HIRAI: 'IN A MANNER OF SPEAKING'

**9 July - 11 September**

Sladers Yard, WEST BAY, Bridport, DT6 4EL. Wednesday - Sunday 10am - 4.30pm. 01308 459511 / sladersyard.co.uk. "Recent ceramics."

### 'HOW WE LOOK'

**10 - 17 July**

The Old Brick Workshop, Higher Poole, WELLINGTON, TA21 9HW. 10am - 4pm. 07989 465427. "Photography painting and pottery by Rob Stopford, Sally Clark and Nicola Werner."

### JONATHON BADDELEY

**13 - 19 July**

The Gallery, Shaftesbury Arts Centre, Bell Street, SHAFTESBURY, SP7 8AR. Monday - Saturday 10am - 4pm. shaftesburyartscentre.org.uk. "Recent work."

### POOLE LEISURE PAINTERS

**SUMMER EXHIBITION**

**14 - 25 July**

The Gallery Upstairs, Upton Country Park, Poole Road, POOLE, BH17 7BJ. 10am - 4pm. 01202 693526 / pooleleisurepainters.co.uk.

### BLACK SWAN ARTS OPEN

**15 July - 11 September**

Black Swan Arts, 2 Bridge Street, FROME, BA11 1BB. Monday - Sunday 10am - 4pm. 01373 473980 / blackswanarts.org.uk. "Over 100 artworks under £1,000 from established art practitioners through to avant-garde young graduates in a variety of mediums."

**Linda Chew**  
Porcelain Delights  
2nd-31st July

**Lucille Scott**  
Art in Metal  
1st-31st August

**THE CREATIVE GALLERY**  
Showcasing ceramics, paintings, textiles, jewellery and glass by local artists

St John's Hill, Wareham, Dorset BH20 4NB t 01929 551505 e fiona@creativegallerywareham.co.uk  
Open daily 10am-5pm



## Visual Arts

### 'UNFOLDING STORIES 5'

**16 - 31 July**

The West Barn, Pound Lane,  
BRADFORD-ON-AVON, BA15 1LF.  
10.30am - 4.30pm. [cqwest.uk](http://cqwest.uk). "New  
work by art textile group CQ West."

### 'EMERGE'

**17 - 31 July**

Gallery At The Station, Station  
Approach, FROME, BA11 1RE.  
Monday - Saturday 10am - 4pm.  
07970 462395. "The hottest new  
artists, designers and makers."

### SARAH REDMOND-FAREHAM: 'A CURIOUS COLLECTION'

**20 - 31 July**

Walford Mill, Knobcrook Road,  
WIMBORNE, BH21 1NL. Wednesday  
- Saturday 10am - 5pm, Sunday  
11am - 4pm. [walfordmillcrafts.co.uk](http://walfordmillcrafts.co.uk).

### 'THREE COLOURISTS'

**20 July - 2 August**

The Gallery, Shaftesbury Arts  
Centre, Bell Street, SHAFTESBURY,  
SP7 8AR. Monday - Saturday 10am -  
4pm. [shaftesburyartscentre.org.uk](http://shaftesburyartscentre.org.uk).  
New work by Percy Lizzard, Andrea  
Jenkins, and Corrina Cooper.

### 'THE SUMMER EXHIBITION'

**20 July - 2 September**

Artwave West, MORCOMBELAKE,  
DT6 6DY. Wednesday - Saturday  
10am - 5pm. [artwavewest.com](http://artwavewest.com).

### ART EXHIBITION

**21 July - 27 July**

The Bomb Shelter, Lower Fore  
Street, BEER, EX12 3EG. Monday -  
Saturday 10am - 4pm, Sunday 11am  
- 3pm. 075381 306600. "An eclectic  
mix of acrylics and watercolours."

### 'INTO THE WOODS'

**25 July - 7 August**

Fine Foundation Gallery, Durlston  
Country Park, SWANAGE, BH19 2JL.  
10am - 5pm. [durlston.co.uk /  
intothewoodsart.uk](http://durlston.co.uk/intothewoodsart.uk). "Eight artists  
celebrate the magical properties of  
the woods, their importance within  
an environmental context and  
their contribution to personal  
wellbeing. The exhibiting artists  
are Tim Edgar, Jim Hunter, Tony  
Kerins, Debbie Lee, Shannon  
Ribbons, Katy Shepherd and Julie  
Winsor. The exhibition also includes  
work from the late Jay Goulding."



'1059 BALBOA BLVD.' (Coloured pencil on paper, 35.56 x 45.1 cm, 1967) © David Hockney

## David Hockney: Love Life

In 2017, prior to the opening of a retrospective exhibition at the Centre Pompidou in Paris, David Hockney (b. 1937) painted the words 'Love Life' on the final wall of the show. Explaining his actions, he said: "I love my work. And I think the work has love, actually... I love life. I write it at the end of letters - 'Love life, David Hockney'."

That simple exhortation is a now common refrain for the artist, who regularly appeals for people to enjoy the simple beauty of the world around them. Although Hockney's love of life has been exemplified through recent bodies of work, such as depicting the progress of spring in his native Yorkshire (2011-13) and, most recently, in Normandy (2020), the Holburne's new exhibition will demonstrate how Hockney's 'Love Life' dictum has underpinned his art since the 1960s.

Hockney's delight in the world is no better demonstrated than in the drawings he made in the late 1960s and 1970s. Visitors to the exhibition will be able to marvel at his extraordinary power of observation and skill in using tiny, mundane details to help capture a situation, a sitter's character, or a place. With over 40 of Hockney's drawings on loan from private collections, *Love Life* is a wonderful way to enjoy his artistry.

**Until 18 September:** Holburne Museum, Great Pulteney Street, BATH, BA2 4DB. Monday - Saturday 10am - 5pm, Sunday and Bank Holidays 11am - 5pm. £12.50. 01225 388588 / [holburne.org](http://holburne.org).

### TIM HARRISON DRAWINGS > PRINTS > STRUCTURES AN EXHIBITION OF NEW WORK 15 July - 20 August

The Vanner Gallery  
45 High Street  
Salisbury  
01722 501 551  
[vannergallery.com](http://vannergallery.com)







JOSEPH BENWELL CLARKE 'COTTAGE INTERIOR, CERNE ABBAS, DORSET' (1886)

## Hardy's Wessex

In an interview in 1901, the writer Thomas Hardy said, "What are my books but one plea against man's inhumanity to man - to woman - and to the lower animals." Hardy's desire to fight this inhumane treatment of others shaped his works, both poetry and prose. It is also the core of the four new exhibitions by Wessex Museums - *Hardy's Wessex* - running simultaneously at Dorset Museum, Poole Museum, The Salisbury Museum and Wiltshire Museum.

Hardy's parents were a cook and builder. Throughout his life, growing up and living in the region he would later call Wessex, he witnessed the inequalities, hypocrisies and cruelties inflicted on others. Although he initially trained as an architect, he turned to writing in his 30s and used this medium to promote the causes of those he saw as oppressed, as well as capturing a fast-disappearing way of life.

The tragedy, that he is so known for, became his chief tool in inspiring empathy with these characters.

The objects across the four exhibitions - the largest collection ever to be displayed at one time - tell this story. Most of the objects are on display for the first time in 100 years, and for some it will be a once-in-a-lifetime chance to see them.



'THE DORSETSHIRE LABOURER' BY THOMAS HARDY (Manuscript, c. 1883)



HARDY'S GRANDMOTHER'S KETTLE  
(Mid-19th century)

They show how Hardy's Wessex upbringing shaped his feelings about these causes, how he used his writing to promote them, and how these works were received by the public.

Personal objects lead visitors through Hardy's journey. Letters from Siegfried Sassoon, Millicent Fawcett, William Morris and three women who identified strongly with his character Tess Durbeyfield show how his works struck a chord with contemporary audiences.

*Harriet Still*

### Until 30 October

Dorset Museum, High West Street, DORCHESTER, DT1 1XA. Monday - Saturday 9am - 4.30pm, Sunday and Bank Holidays 10am - 4pm. 01305 262735 / [dorsetmuseum.org](http://dorsetmuseum.org).

Salisbury Museum, The Kings House, 65 The Close, SALISBURY, SP1 2EN. 10am - 5pm. 01722 332151 / [salisburymuseum.org.uk](http://salisburymuseum.org.uk).

Poole Museum, 4 High Street, POOLE, BH15 1BW. 10am - 5pm. 01202 128888 / [poolemuseum.org.uk](http://poolemuseum.org.uk).

Wiltshire Museum, 41 Long Street, DEVIZES, SN10 1NS. Monday - Saturday 10am - 5pm, Sunday 11am - 3pm. 01380 727369 / [wiltshiremuseum.org.uk](http://wiltshiremuseum.org.uk).

All images © Dorset Museum

THIS SEASON AT

## GALLERY ON THE SQUARE



Colin Willey



Sarah Ross-Thompson



John Boyd



Allan Green



Philip Winstone

**Queen Mother Square, Poundbury, Dorchester DT1 3BL**

Mon-Sat, 9.30am to 5pm; Sundays: 11am to 4pm 01305 213322 [www.gallerypoundbury.co.uk](http://www.gallerypoundbury.co.uk)





# Sou'-Sou'-West

**Summer of 22**  
**18 June – 10 July**  
Bridport Arts Society

---

**Stitched**  
**4 July – 17 July**  
Textiles Open

---

**No-thing / Waterfront**  
**16 July – 31 July**  
Diana Pilcher & Linda Ashe

---

**Colmers and Beyond**  
**1 – 14 August**  
Marion Taylor

---

**South West Sculptors**  
**6 – 21 August**  
Group Exhibition

---

**Landscapes, Seascapes, Hedgerows**  
**15 August – 4 September**  
Dot Wood

---

**Unrestricted (call for entries)**  
**27 August – 18 September**

HERE FOR CULTURE

Supported using public funding by  
**ARTS COUNCIL ENGLAND**  
LOTTERY FUNDED

**Dorset Council**

**Gallery & Shop**  
**Daily: 10:30 - 16:30**  
Manor Yard, Symondsbur Estate,  
Bridport, DT6 6HG

**sousouwest.co.uk**

© Dot Wood / Blue and Yellow Flowers

Follow  
**EVOLVER** MAGAZINE  
on Instagram

evolvermagazine

**EM**

**Courthouse**  
GALLERY

Presenting fine art, prints and lithographs  
from internationally renowned artists

**JOHN PIPER**  
**6 August – 17 September**  
Wednesday to Saturday 10am to 5pm

Market Place  
Somerton  
Somerset  
TA11 7LX

**www.courthousegallery.uk**





### THREE COLOURISTS

Andrea Jenkins  
Corrina Cooper  
Percy Lizzard



20 July - 2 August 2022  
The Gallery  
Shaftesbury Arts Centre  
Bell Street  
Shaftesbury SP7 8AR  
Open every day 10 - 4  
Contact: 07979 590790



**Gallery and Online Exhibition of New Paintings**  
from the wild animal kingdom of Kenya and its people by  
**MOISH SOKAL**



*Milk for Baby*

*Watercolour 16" x 20"*

### The Malthouse Gallery

East Lambrook Manor Gardens, Somerset TA13 5HH

**Saturday 4th June - Saturday 23rd July**

Tues to Sat • 10am to 5pm • [moishsokal.co.uk](http://moishsokal.co.uk) • 01935 881350

## EVOLVER MAGAZINE FREE LISTINGS

Exhibition and performance listings should be  
emailed to [listings@evolver.org.uk](mailto:listings@evolver.org.uk)

Please send ALL information in the following order:

Event, date(s), venue, address (including postcode),  
times, admission fee (if any), contact number /  
website, up to 30 words about your event



## Visual Arts



PATRICIA BURNS 'HIDDEN VALLEY'

## Sherborne Open Art Exhibition

"Last held in 2018, Sherborne Art Club's Open Art Exhibition is happening again this July. Held since 1931, this popular, highly regarded annual show returns, with support from Sherborne Arts and generous sponsorship - overall from local solicitors Rogers Drewett with further prizes and support from several other local businesses. This is one of the finest open exhibitions in the region, with work by both professional and amateur local artists attracting visitors from far afield. Up to 400 pieces will be on display. The exhibition is open to all artists, with selection by a judging panel. Entries can be submitted right up to the morning of 16th July. Full details can be found on the website."

**23 - 31 July:** Digby Hall, Hound Street, SHERBORNE, DT9 3AA.  
10am - 5pm (Sunday 31 July 10am - 2pm. 01935 816368 /  
[sherbornearts.org](http://sherbornearts.org)).

### 'SEA SHORE AND MORE'

**29 July - 4 August**

Malthouse Gallery, Town Mill, Mill Lane, LYME REGIS, DT7 3PU. 10am - 4.30pm. 01297 44042 / [townmill.org.uk](http://townmill.org.uk). *Paintings and prints by Sue Lewin and Chris Goodman.*

### MARION TAYLOR: 'COLMERS AND BEYOND'

**1 - 14 August**

Sou'-Sou'-West Arts Gallery, Symondsbur Estate, BRIDPORT, DT6 6HG. 10.30am - 4.30pm. 01308 301326 / [sousouwest.co.uk](http://sousouwest.co.uk).

### LUCILLE SCOTT: 'ART IN METAL'

**1 - 31 August**

The Creative Gallery, St John's Hill, WAREHAM, BH20 4NB. 10am - 5pm. [creativegallerywareham.co.uk](http://creativegallerywareham.co.uk).

### MAXINE CHANDLER: 'THE BRIGHTER THE BETTER'

**3 - 9 August**

The Gallery, Shaftesbury Arts Centre, Bell Street, SHAFESBURY, SP7 8AR. Monday - Saturday 10am - 4pm. [shaftesburyartscentre.org.uk](http://shaftesburyartscentre.org.uk). *"Stained glass."*

### 'HER FACE'

**4 - 27 August**

Gallery At The Station, Station Approach, FROME, BA11 1RE. Monday - Saturday 10am - 4pm. 07970 462395. *"Group show of female portraits by female artists, bringing together personal stories and public opinions around femininity and feminism."*

### DORSET ARTS & CRAFTS SHOWCASE 2022

**5 - 9 August**

Purbeck School, Worgret Road, WAREHAM, BH20 4PF. 10am - 5pm. £5. 01202 394101 / [dorsetartsandcrafts.org](http://dorsetartsandcrafts.org). *"Sale of work by members of DACA, open competitions in fine art, craft and photography, guest exhibitions, craft stalls, and children's workshops."*

### SOUTH WEST SCULPTORS

**6 - 21 August**

Sou'-Sou'-West Arts Gallery, Symondsbur Estate, BRIDPORT, DT6 6HG. 10.30am - 4.30pm. 01308 301326 / [sousouwest.co.uk](http://sousouwest.co.uk).





### THREE COLOURISTS

Andrea Jenkins  
Corrina Cooper  
Percy Lizzard



20 July - 2 August 2022  
The Gallery  
Shaftesbury Arts Centre  
Bell Street  
Shaftesbury SP7 8AR  
Open every day 10 - 4  
Contact: 07979 590790



**Gallery and Online Exhibition of New Paintings**  
from the wild animal kingdom of Kenya and its people by  
**MOISH SOKAL**



*Milk for Baby*

*Watercolour 16" x 20"*

### The Malthouse Gallery

East Lambrook Manor Gardens, Somerset TA13 5HH

**Saturday 4th June - Saturday 23rd July**

Tues to Sat • 10am to 5pm • [moishsokal.co.uk](http://moishsokal.co.uk) • 01935 881350

## EVOLVER MAGAZINE FREE LISTINGS

Exhibition and performance listings should be  
emailed to [listings@evolver.org.uk](mailto:listings@evolver.org.uk)

Please send ALL information in the following order:

Event, date(s), venue, address (including postcode),  
times, admission fee (if any), contact number /  
website, up to 30 words about your event



## Visual Arts



PATRICIA BURNS 'HIDDEN VALLEY'

## Sherborne Open Art Exhibition

"Last held in 2018, Sherborne Art Club's Open Art Exhibition is happening again this July. Held since 1931, this popular, highly regarded annual show returns, with support from Sherborne Arts and generous sponsorship - overall from local solicitors Rogers Drewett with further prizes and support from several other local businesses. This is one of the finest open exhibitions in the region, with work by both professional and amateur local artists attracting visitors from far afield. Up to 400 pieces will be on display. The exhibition is open to all artists, with selection by a judging panel. Entries can be submitted right up to the morning of 16th July. Full details can be found on the website."

**23 - 31 July:** Digby Hall, Hound Street, SHERBORNE, DT9 3AA.  
10am - 5pm (Sunday 31 July 10am - 2pm. 01935 816368 /  
[sherbornearts.org](http://sherbornearts.org)).

### 'SEA SHORE AND MORE'

**29 July - 4 August**

Malthouse Gallery, Town Mill, Mill Lane, LYME REGIS, DT7 3PU. 10am - 4.30pm. 01297 44042 / [townmill.org.uk](http://townmill.org.uk). *Paintings and prints by Sue Lewin and Chris Goodman.*

### MARION TAYLOR: 'COLMERS AND BEYOND'

**1 - 14 August**

Sou'-Sou'-West Arts Gallery, Symondsbur Estate, BRIDPORT, DT6 6HG. 10.30am - 4.30pm. 01308 301326 / [sousouwest.co.uk](http://sousouwest.co.uk).

### LUCILLE SCOTT: 'ART IN METAL'

**1 - 31 August**

The Creative Gallery, St John's Hill, WAREHAM, BH20 4NB. 10am - 5pm. [creativegallerywareham.co.uk](http://creativegallerywareham.co.uk).

### MAXINE CHANDLER: 'THE BRIGHTER THE BETTER'

**3 - 9 August**

The Gallery, Shaftesbury Arts Centre, Bell Street, SHAFTESBURY, SP7 8AR. Monday - Saturday 10am - 4pm. [shaftesburyartscentre.org.uk](http://shaftesburyartscentre.org.uk). *"Stained glass."*

### 'HER FACE'

**4 - 27 August**

Gallery At The Station, Station Approach, FROME, BA11 1RE. Monday - Saturday 10am - 4pm. 07970 462395. *"Group show of female portraits by female artists, bringing together personal stories and public opinions around femininity and feminism."*

### DORSET ARTS & CRAFTS SHOWCASE 2022

**5 - 9 August**

Purbeck School, Worgret Road, WAREHAM, BH20 4PF. 10am - 5pm. £5. 01202 394101 / [dorsetartsandcrafts.org](http://dorsetartsandcrafts.org). *"Sale of work by members of DACA, open competitions in fine art, craft and photography, guest exhibitions, craft stalls, and children's workshops."*

### SOUTH WEST SCULPTORS

**6 - 21 August**

Sou'-Sou'-West Arts Gallery, Symondsbur Estate, BRIDPORT, DT6 6HG. 10.30am - 4.30pm. 01308 301326 / [sousouwest.co.uk](http://sousouwest.co.uk).



## Visual Arts

### 'A CELEBRATION OF SKY'

**6 August - 10 September**

Ace Arts, Market Place, SOMERTON, TA11 7NB. Tuesday - Saturday 10am - 5pm. 01458 273008 / acearts.co.uk. "Lino prints by Steve Manning."

### PENNIE ELFICK: 'TALKING TO MYSELF'

**6 August - 11 September**

Taunton Brewhouse, Coal Orchard, TAUNTON, TA1 1JL. Monday - Friday 10am - 4pm. 01823 283244. "Atmospheric reductive compositions that play with colour, geometry and light. A must see."

### INGRID POLLARD: 'THREE DROPS OF BLOOD'

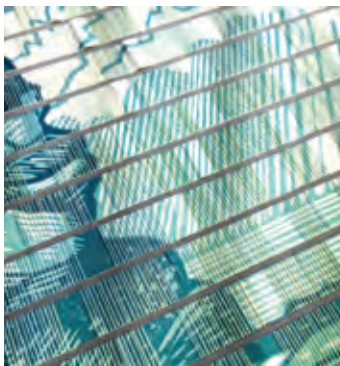
**6 August - 29 October**

Thelma Hulbert Gallery, Dowell Street, HONITON, EX14 1LX. Wednesday - Saturday 10am - 5pm. 01404 45006 / thelmahulbert.com.

### 'IN THREE MINDS'

**10 - 16 August**

The Gallery, Shaftesbury Arts Centre, Bell Street, SHAFTESBURY, SP7 8AR. Monday - Saturday 10am - 4pm. 01747 855243. Work by Anne-Louise Richards, Shane Pardoe, and Deborah Pardoe.



### DEBBY KIRBY AND ROBIN MACKENZIE: 'FINE LINES'

**10 - 30 August**

Fine Foundation Gallery, Durlston Castle, Lighthouse Road, SWANAGE, BH19 2JL. 10.30am - 5pm. 07979 812083.

### BLANDFORD ART SOCIETY

**15 - 20 August**

The Corn Exchange, BLANDFORD FORUM, DT11 7AD. 10am - 5pm. blandfordartsociety.weebly.com.



BEN RIVERS 'LOOK THEN BELOW' (Still from super 16mm film, 2019)

## Forest: Wake this Ground

"Arnolfini invites audiences to celebrate what lies above and below the forest floor with *Forest: Wake this Ground*, a major group exhibition including artists, writers, filmmakers, and composers, from across the globe. Works in this exhibition recycle, reuse, and repurpose the forest's resources, reminding us of their ancient past and their fragile future."

**9 July - 2 October:** Arnolfini, 16 Narrow Quay, BRISTOL, BS1 4QA. 11am - 6pm. 0117 917 2300 / arnolfini.org.uk.

### DOT WOOD: 'LANDSCAPES, SEASCAPES, HEDGEROWS'

**15 August - 4 September**

Sou'-Sou'-West Arts Gallery, Symonds Estate, BRIDPORT, DT6 6HG. 10.30am - 4.30pm. 01308 301326 / sousouwest.co.uk.

### JEMIMA MITCHELL AND LIN WALKER

**17 - 23 August**

The Gallery, Shaftesbury Arts Centre, Bell Street, SHAFTESBURY, SP7 8AR. Monday - Saturday 10am - 4pm. 01747 855243. Ceramics.

### CLEVEDON ART CLUB

**19 - 29 August**

Science Atrium, Clevedon School, Valley Road, CLEVEDON, BS21 6AH. Monday - Saturday 10.30am - 6pm. Sunday 2 - 6pm. £1. clevedonartclub.co.uk. "64th annual open exhibition featuring fine art and 3D works."



### DEREK NICE

**20 - 27 August**

Heritage Courtyard Gallery, 6 Heritage Courtyard, WELLS, BA5 2RR. Monday - Saturday 10.30am - 4pm. 07974 255016 / heritagecourtyardstudio.com. "This exhibition of works by the late Derek Nice is a celebration of his life as a sculptor, painter, constructor, photographer and raconteur."

### BRUTON ART SOCIETY

**20 - 27 August**

King's Bruton Memorial Hall, BRUTON, BA10 0ED. 10am - 4pm. brutonartsociety.co.uk.

### RAVI BUTALIA: 'PAPERWORKS'

**24 August - 6 September**

The Gallery, Shaftesbury Arts Centre, Bell Street, SHAFTESBURY, SP7 8AR. Monday - Saturday 10am - 4pm. shaftesburyartscentre.org.uk.

### MOSTERTON ART GROUP

**27 August - 3 September**

Skyrm Rooms, Yarn Barton, BEAMINSTER, DT8 3EF. 10am - 5pm. 01308 867581.

### SSW SUMMER OPEN:

**'UNRESTRICTED'**

**27 August - 18 September**

Sou'-Sou'-West Arts Gallery, Symonds Estate, BRIDPORT, DT6 6HG. 10.30am - 4.30pm. 01308 301326 / sousouwest.co.uk.



# FISHERTON MILL

BEST CAFE IN WILTSHIRE

GALLERY

CAFE

STUDIOS

108 Fisherton Street, Salisbury, SP2 7QY

Monday - Friday 10am-5pm, Saturday 9.30am - 5.30pm



[WWW.FISHERTONMILL.CO.UK](http://WWW.FISHERTONMILL.CO.UK)





# Music

## July and August 2022

### THE NEIL BURNS ORGAN TRIO WITH TERRY QUINNEY

**1 July**

The Red Hot Jazz Club, The Red Brick Building, Morland Road, GLASTONBURY, BA6 9FT. 7.30pm. £12 / £10. [redbrickbuilding.co.uk](http://redbrickbuilding.co.uk). "Groove-heavy, hard-swinging Blue Note classics and originals, with some great boogaloo and funk thrown in."



### HANNAH WILLIAMS AND THE AFFIRMATIONS

**1 July**

Fiddlers, Willway Street, BRISTOL, BS3 4BG. 8.15pm. £11.99. 0117 987 3403. [bristolbeacon.org](http://bristolbeacon.org). "Bristol-based band Hannah Williams and the Affirmations are well-renowned across the global soul scene for their retro-inspired sound."



### OLD BABY MACKEREL

**1 July**

Village Hall, WINTERBORNE STICKLAND, DT11 0NT. 7.30pm. £12 / £5. 01258 880920 / [artsreach.co.uk](http://artsreach.co.uk). "The rhythmic sounds of fiddle, banjo, mandolin, guitar and double bass are sure to get knees bouncing and elbows swinging to the virtuosic sound of blistering solos and sweet harmonies."



## Richard Hawley

"Richard Hawley has carved out a distinct and deserved legacy within rock-and-roll. His accolades are wide-ranging and impressive from being Pulp's guitarist to collaborations with Arctic Monkeys, Paul Weller, and Elbow."

**6 July:** Bath Forum, 1A Forum Buildings, BATH, BA1 1UG. 8pm. £35.50 / £22.50. 01225 443114 / [bristolbeacon.org](http://bristolbeacon.org).



### DAVID HALLS

**5 July**

St Michael the Archangel, Church Street, LYME REGIS, DT7 3DB. 7.30pm. £12. 07710 805029 / [sworgansociety.org](http://sworgansociety.org). Organ recital.

### CONCERT

**7 July**

The Church of St Philip and St James, NORTON ST PHILIP, BA2 7LY. 1pm. £5. 01373 834488. "Charismatic singer Livvy Hylton-Smith is joined by guitarist Bob King to present an eclectic range of music."

### ACCORDION CONCERT

**2 July**

Halsway Manor, near CROWCOMBE, TA4 4BD. 8pm. £1. [halswaymanor.org.uk](http://halswaymanor.org.uk). "Concert by Amy Thatcher, Paul Hutchinson, and Murray Grainer."

### OLD BABY MACKEREL

**8 July**

Village Hall, MARNHULL, DT10 1JZ. 7.30pm. £10 / £5. 01258 820458 / [artsreach.co.uk](http://artsreach.co.uk). See 1 July.

### SWANAGE JAZZ FESTIVAL

**8 - 10 July**

Various locations in and around SWANAGE, Dorset. [swanagejazzfestival.co.uk](http://swanagejazzfestival.co.uk). "Line-up includes The Alan Barnes Octet, Nigel Price with his Wes Reimagined project, Art Themen's New Directions Quintet, Greg Abate, and new rising stars like Xhosa Cole, Alex Clarke Quartet, Mark Kavuma and Jo Harrop."

### THE SOUND OF THE STREETS

**8 - 10 July**

Castle Green and Goodlands Gardens, TAUNTON. Free entry. [thesoundofthestreets.com](http://thesoundofthestreets.com). "Three glorious days of music and celebration."



### PRIDDY FOLK FESTIVAL

**8 - 10 July**

Village Green, PRIDDY, BA5 3BB. £124 / £106. [priddyfolk.org](http://priddyfolk.org). "Set in a drop-dead-gorgeous location high up on the Mendip Hills, yet only half an hour from Bristol and Bath, this family-friendly festival is now in its 30th year. Headliners include Jiggy, Manran (above) and De Temps Antan."

### BUDLEIGH MUSIC FESTIVAL

**8 - 16 July**

St Peters Church, 7 The Lawn, BUDLEIGH SALTERTON, EX9 6LT. [budleighmusicfestival.co.uk](http://budleighmusicfestival.co.uk). "Budleigh Music Festival is back with a week-long programme of concerts."



We are a funky, independent record shop stocking a great range of new and preloved vinyl, specialising in Reggae, Hip Hop, Soul, Funk, World, Electronic, Jazz, Blues, Alternative, Indie, Rock, Pop and more


**8a Pope Street, Brewery Square, Dorchester, DT1 1GW**  
Tuesday to Saturday from 10am




**CLOCKTOWER MUSIC**, Bridport's vinyl record shop welcomes our satellite shop **CLOCKTOWER TOO**

*Clocktower Too specialises in all styles of music on CD, plus a selection of music memorabilia and vinyl records*

**35a South Street, Bridport, Dorset DT6 3NY**  
Open Monday, Wednesday, Friday and Saturday, 9.30am - 3.30pm



## Exhibit A

Artists and photographers are invited to submit work for next issue's page 3 Exhibit A by emailing images to: [simon@evolver.org.uk](mailto:simon@evolver.org.uk)



## SOMERSTOCK

9 July

Recreation Ground, SOMERTON, Somerset. [somerstock.com](http://somerstock.com). "One-day family-friendly music festival."

## SALISBURY CHAMBER CHORUS: 'ACROSS THE POND'

9 July

St. John's Church, Church Street, TISBURY, SP3 6NH. 7.30pm. £15. [salisburychamberchorus.org](http://salisburychamberchorus.org). "Concert celebrating English and American music."



## PAUL SARTIN AND ÇİĞDEM ASLAN

9 July

Halsway Manor, near CROWCOMBE, TA4 4BD. 8pm. £12. [halswaymanor.org.uk](http://halswaymanor.org.uk). "Folk songs from around the world."

## 'THE MUSIC AND STORIES OF RUTH TONGUE'

10 July

Carew Arms, CROWCOMBE, Somerset TA4 4BD. 6pm. Free entry. [halswaymanor.org.uk](http://halswaymanor.org.uk). "English folk artist Paul Sartin shares his research about the Quantock folklorist Ruth Tongue."

## YEOVILTON MILITARY WIVES CHOIR

13 July

Martock Church, MARTOCK, TA12 6J. 7.30pm. £12 / £10. 07790 225357.

## OSIBISA

15 July

Amphitheatre, Lighthouse, 21 Kingland Road, POOLE, BH15 1UG. 7pm. [lighthousepoole.co.uk](http://lighthousepoole.co.uk). "Afro-rock legends."

## CALLUM SMART & RICHARD UTTLEY

15 July

Bridport Arts Centre, 9 South Street, BRIDPORT, DT6 3NR. 11.30am. 01308 424204 / [bridport-arts.com](http://bridport-arts.com).



KATE RUSBY

## Sidmouth Folk Festival

"There's an outstanding line-up of shows, dance performances, workshops, ceilidhs and entertainment for all ages that builds on the ongoing success of England's most resilient of folk gatherings that's been running since 1955. Headline shows feature the best in contemporary folk music with Kate Rusby, Show of Hands, The Spooky Men's Chorale, Eddi Reader, Spiers and Boden, the Yves Lambert Trio, Fara and Jez Lowe, with pre-festival concerts from Steeleye Span and The Fisherman's Friends. The festival will also feature a unique concert honouring one of the true greats of the traditional music world - the late, great Norma Waterson, who died earlier this year, aged 82. Led by her husband and festival patron Martin Carthy, and daughter Eliza Carthy, the show will also feature the talents of friends and admirers, including Martin Simpson, John Kirkpatrick, Emily Portman, Sandra Kerr, Jim Causley, Jo Freya, Fi Fraser, Saul Rose and David Delarre."

**29 July - 5 August:** Various locations in SIDMOUTH, Devon. 01395 577952 / [sidmouthfolkfestival.co.uk](http://sidmouthfolkfestival.co.uk).

## 'JAZZ IN THE THEATRE: BENNY GOODMAN'

15 July

Bridport Arts Centre, 9 South Street, BRIDPORT, DT6 3NR. 8pm. 01308 424204 / [bridport-arts.com](http://bridport-arts.com). "Benny Goodman's joyous, swinging music will be presented by clarinettist Charlie Hearnshaw, accompanied by Philip Clouts at the piano."

## BRISTOL HARBOUR FESTIVAL

15 - 17 July

Harbourside, BRISTOL, BS1. 0117 927 6614 / [bristolharbourfestival.co.uk](http://bristolharbourfestival.co.uk). "Back for its 50th anniversary and it's going to be a memorable evening for Bristol! Family activities, circus performers, delicious food stalls, visiting vessels and live music across all the stages on Bristol's waterfront."

## TOLPUDDLE MARTYRS' FESTIVAL

15 - 17 July

Tolpuddle Martyrs Museum, Dorchester Road, TOLPUDDLE, DT2 7EH. [tolpuddlemartyrs.org.uk](http://tolpuddlemartyrs.org.uk). "Yearly festival with music from Billy Bragg, Peat & Diesel, Rhoda Dakar, The Leylines, Skimmity Hitchers and more."

## MARY LEE FAMILY BAND + OUTLANDISH + SUGAR RUSH + GYPSY JUKEBOX

16 July

Amphitheatre, Lighthouse, 21 Kingland Road, POOLE, BH15 1UG. 1pm. [lighthousepoole.co.uk](http://lighthousepoole.co.uk). "Grass roots music."



## THE GIGSPANNER BIG BAND AND RAYNOR WINN: 'SALT LINES'

17 July

Lighthouse, 21 Kingland Road, POOLE, BH15 1UG. 7.45pm. 01202 280000 / [lighthousepoole.co.uk](http://lighthousepoole.co.uk). "Celebrating the South West Coast Path in traditional songs performed by a collective of some of the biggest names in British folk music and newly-written words by Raynor Winn, author of The Salt Path, her best-selling memoir of walking the Path's 630 miles."

## JAMES TAYLOR QUARTET

22 July

Amphitheatre, Lighthouse, 21 Kingland Road, POOLE, BH15 1UG. 7.30pm. 01202 280000. "Brilliantly funky acid jazz standard bearers."

## CHAGSTOCK FESTIVAL

22 and 23 July

Whiddon Down, near CHAGFORD, Devon. [chagstock.info](http://chagstock.info).

## BRIDPORT FOLK FESTIVAL

22 - 24 July

Various locations, BRIDPORT, Dorset. [bridportfolkfestival.com](http://bridportfolkfestival.com). "Music, dancing, music sessions, workshops, food, stalls, bands, lots to see and hear!"

The Electric Broom Cupboard presents

# Orchard Popfest

South Somerset

THE MONOCHROME SET • THE JUNE BRIDES • THE CHESTERFIELDS  
HELEN McCOOKERYBOOK • THE RHYNES • THE LEAKING MACHINE • PALOOKA 5

SATURDAY 16 JULY 2022

DJ Johnny Dee • DJ Alan Flint • DJ Andrew Perry

North Down Farm, Crewkerne, TA18 7PL • Gates 12noon, live music from 2pm, curfew 11pm  
Bar and food • Tickets from Eventbrite: £20 / under 16s free / camping £10



## WILKSWOOD REGGAE FESTIVAL

22 - 24 July

Wilkswood Farm, High Street,  
LANGTON MATRAVERS, BH19 3HD.  
wilkswoodrootsreggaeefestival.co.uk.



### MARTHA WAINWRIGHT + ROSEANNE REID

28 July

Redgrave Theatre, Percival Road,  
Clifton, BRISTOL, BS8 3LE. 8pm.  
£29.98. 0117 315 7800 /  
bristolbeacon.org. "Raw depth and  
uncompromising defiance."

### ALTITUDE

28 - 30 July

BLACKBOROUGH, Devon, EX15 2HJ.  
07763 531733 / altitudedevon.com.

### CAMP BESTIVAL

28 - 31 July

Lulworth Castle, LULWORTH,  
Dorset. campbestival.net.

### WOMAD

28 - 31 July

Charlton Park, near MALMESBURY,  
Wiltshire. womad.co.uk.



### ST PAUL AND THE BROKEN BONES

29 July

02 Academy, Frogmore Street,  
BRISTOL, BS1 5NA. 8pm. £29.98. 0117  
927 9227 / bristolbeacon.org.  
"Alabama eight-piece St Paul & The  
Broken Bones pack a soulful punch  
with their sound, blending gospel,  
R&B, rock'n'roll, funk and  
psychedelia."



THE MONOCHROME SET

## Orchard Popfest

"The Electric Broom Cupboard returns with a new venture, Orchard Popfest, an all-dayer curated by The Chesterfields, featuring music by The Monochrome Set, The June Brides, The Chesterfields, Helen McCookerybook, The Rhynes, The Leaking Machine, Palooka 5, DJs Johnny Dee, Andrew Perry and Alan Flint, plus Vinyl Van record stall, food and bar."

**16 July:** North Down Farm, near CREWKERNE, TA18 7PL. Gates  
12noon, music from 2pm. Tickets from Eventbrite: £20 / under 16s  
free / camping available. Instagram: orchardpopfest.

### SIREN

29 and 30 July

Lloyds Amphitheatre, Explore Lane,  
BRISTOL, BS1 5LL. sirenbristol.com.

### FARMFEST

29 and 30 July

Gilcombe Farm Gilcombe, BRUTON,  
BA10 0QE. farmfestival.co.uk.  
"Featuring over 100 acts in the  
electronic, indie, folk, and world  
music genres, plus everything from  
early morning workouts to lively  
kids workshops, riotous jumbles of  
jazz, brass-based bonanzas, stand-  
up comedy, and poetry."

### SOMERSET CHAMBER CHOIR

30 July

Wells Cathedral, Cathedral Green,  
WELLS, BA5 2UE. 7pm. £30 / £25 /  
£15. somersetchamberchoir.org.

### NINEBARROW

30 July

Amphitheatre, Lighthouse, 21  
Kingsland Road, POOLE, BH15 1UG.  
8pm. 01202 280000 /  
lighthousepoole.co.uk. "Brilliant  
Dorset-based folk duo."



### DUSTBOWL REVIVAL

1 August

Redgrave Theatre, Percival Road,  
Clifton, BRISTOL, BS8 3LE. 8pm.  
£16.35. 0117 315 7800 /  
bristolbeacon.org. "Joyous revelry."

### TONY ROBERTS AND RICHARD LLEWELYN

4 August

The Church of St Philip and St  
James, NORTON ST PHILIP, BA2  
7LY. 1pm. £5. 01373 834488.  
"Contemporary jazz and folk."

### OUTCIDER FESTIVAL

4 - 7 August

Fernhill Farm, COMPTON MARTIN,  
Bristol, BS40 6LD. 01761 221663 /  
outciderfestival.com. "Two  
alternating stages host 40 original  
acts including The Dreadnoughts,  
Undercover Hippy, Da Fuchaman,  
Crazy Arm, and Skimmity Hitchers.  
Lots of cider and lots of fun."



### SARAH AND THE STRING SYNDICATE

5 August

The Red Hot Jazz Club, The Red  
Brick Building, Morland Road,  
GLASTONBURY, BA6 9FT. 7.30pm.  
£12 / £10. redbrickbuilding.co.uk.  
"Classic swing tunes from the  
Great American Songbook and  
more."

### BURTON BRADSTOCK FESTIVAL OF MUSIC AND ART

16 - 21 August

Various locations in BURTON  
BRADSTOCK, Dorset, DT6.  
burtonbradstockfestival.com.

### PURBECK VALLEY FOLK FESTIVAL

18 - 21 August

Purbeck Valley Farm, CORFE  
CASTLE.  
purbeckvalleyfolkfestival.co.uk.

### BEAUTIFUL DAYS

19 - 21 August

Escot Park, near OTTERY ST MARY,  
Devon. beautifuldays.org. "Family  
music festival featuring 7 stages,  
amazing site art, a huge children's  
area, comedy, theatre, family  
camping, licensed real ale bars  
and a great choice of food and  
craft stalls."

Subscribe to  
**EVOLVER** MAGAZINE  
online at  
**evolver.org.uk**

Six bi-monthly issues for £25



The  
**Edington Music Festival**  
A Festival of Music within the Liturgy

**We're back! The 65th festival**  
**21st - 28th August 2022**

**Creation and Recreation**

Director: Robert Quinney

Music includes

Vaughan Williams *Mass in G*  
Copland, Dove

Michael Haydn *Requiem*  
Matins & Compline plainchant

edingtonfestival.org • info@edingtonfestival.org





**THE SIDMOUTH FOLK FESTIVAL**  
29TH JULY - 5TH AUGUST 2022

**Kate Rusby • Show of Hands**  
The Spooky Men's Chorale  
**Eddi Reader • Martin & Eliza Carthy • Blowzabella**

Pre Festival Thursday 28 July Steeleye Span  
Friday 29 July Fisherman's Friends

Spiers & Boden • Peatbog Faeries • Edward II  
Martin Simpson • Grace Petrie • Daoiri Farrell  
Yves Lambert Trio • Melrose Quartet  
Centralbal • Matt Cranitch & Jackie Daly  
Jackie Oates & John Spiers • Chris Wood • Fara  
Jez Lowe • Will Pound & Jenn Butterworth  
John Kirkpatrick • Alistair Anderson • Sheelánagig  
Granny's Attic • Mairead Green & Anna Massie  
Emily Portman & Rob Harbron • Ryan Young  
Miranda Sykes & Hannah Martin • Jim Causley  
Jack Rutter • Cohen Braithwaite-Kilcoyne  
Rosie Hood Band • Pedler // Russell • Molraí  
Hannah Sanders & Ben Savage  
... and many more

A festival with a view:  
a seaside town set in majestic  
red cliffs and a lush green valley

**Great Value Tickets available now**

English Folk SIDMOUTH folk radio AFO  
www.sidmouthfolkfestival.co.uk  
or call the Box Office 01395 577952



**THE CHESTERFIELDS**  
**OUR SONGBIRD HAS GONE** Mr. Mellow's MUSIC

**RAZORCUTS THE JUNE BRIDES**  
**McCARTHY TV PERSONALITIES**  
**THE FALL THE LOFT THE MONOCHROME SET**  
**THE BODINES THE COLOURFIELD**  
**JOSEF K ORANGE JUICE**  
**THE FIRE ENGINES HEAVENLY**  
**DELTA 5 THE HOUSE OF LOVE**  
**THE WALTONES THE GO-BETWEENS**  
**CLOSE LOBSTERS LLOYD COLE**  
**THE BLUE AEROPLANES GANG OF FOUR**  
**ALTERED IMAGES SONIC YOUTH**  
**THE CLEANERS FROM VENUS SANDIE SHAW**  
**BMX BANDITS THE DARLING BUDS**  
**DEPARTMENT S THE VASELINES**  
**AZTEC CAMERA THE SMITHS JAMES**  
**THE BEAT HOTEL THE GO-BETWEENS**

**THE CHESTERFIELDS**  
**OUR SONGBIRD HAS GONE**

New single available Friday 15 July on Mr Mellow's Music

 The\_Chesterfields

Mr. Mellow's MUSIC



**Priddy Folk Festival**

**PRIDDY FOLK FESTIVAL**

**8TH - 10TH JULY 2022**  
PRIDDY VILLAGE GREEN  
SOMERSET BA53BB

**JIGGY \* MANRAN**  
**DE TEMPS ANTAN**

**FLATS AND SHARPS \* TRIALS OF CATO**  
**PERKELT \* PONS AELIUS**

**SOLANA \* THE MAGPIES \* LUCY WARD \* COPPER VIPER**  
**THE DRYSTONES \* THE SHACKLETON TRIO \* THE RIN TINS**  
**RACHEL MCSHANE AND THE CARTOGRAPHERS**  
**GILMORE+ROBERTS \* JEZ LOWE \* RYAN YOUNG**  
AND MANY MORE!!!!

WORKSHOPS, SESSIONS, CELEBRATE DANCE FESTIVAL, CHILDREN'S FESTIVAL AND THE PRIDE

TICKETS AND INFO FROM  
**PRIDDYFOLK.ORG**



**PEIXOS**  
By Sarruga

**23-24 September 2022**  
Weymouth Town Centre

Activate Performing Arts are bringing another  
spectacle to Weymouth this September.

Peixos by Sarruga is a spellbinding parade  
inside an eery underwater world featuring  
luminescent sea creatures and gigantic  
bicycle-powered wizardry.

**InsideOut**

**activateperformingarts.org.uk**

Presented in partnership with  
We Are Weymouth and Weymouth Town Council



# Performance

July and August 2022



PENNY NEWELL 'POETRY LEDGE'

## B-Side Festival

"B-side is back this September, join us on an unforgettable journey around Portland as we share some of the remarkable art works our commissioned artists have been working on. This year we welcome artists from across the globe and around the corner to respond to our theme of Common Lands. Here's a taster of what to expect: *Kimberlin* is an experimental short film by Duncan Whitley about the discovery of an underground cinema cavern on Portland. Filmed exclusively on Portland and scored with Abul Mogard's dense, layered Farfisa organ tones, *Kimberlin* takes the viewer on a journey imbued with an ambiguous sense of (be)longing and loneliness. It's not just Portland's underground that's inspired our artists this year. Penny Newell presents *Poetry Ledge* - an experiment to bring poetry and climbing together inspired by the world-famous climbing cliffs of Portland. Guided by a qualified climbing instructor, festival visitors will abseil down to a secure platform where they will partake in a vertical one-on-one poetry workshop, producing new writing about their unique and breath-taking experience."

**8 - 11 September:** Various locations on PORTLAND, Dorset. [b-side.org.uk](http://b-side.org.uk).



### SHAKESPEARE'S GLOBE ON TOUR: 'JULIUS CAESAR'

**2 and 3 July**

Sovereign Centre Car Park, Centenary Way, BOSCOMBE, BH1 4SX. Saturday 7.30pm, Sunday 2.30 and 7.30pm. £20 / £7.50. [gotbeaf.co.uk](http://gotbeaf.co.uk). "Bring a chair, grab a blanket and take a trip back to Ancient Rome in this stunning outdoor performance on top of a multi-storey car park!"



### SHAKESPEARE LIVE: 'TWELFTH NIGHT'

**4 - 9 July**

Cleeve House, SEEND, SN12 6PG. Monday - Friday 6.30pm, Saturday 2 and 7.45pm. £22.50 / £5. 07780 938107 / [shakespearelive.com](http://shakespearelive.com). "High quality and hilarious Shakespeare comedy in a beautiful country garden, with reserved tiered seating in a marquee and picnics before the show, from this long-established local company."



# SHERBORNE TIMES

A MONTHLY CELEBRATION OF PEOPLE, PLACE AND PURVEYOR

## OUT NOW AND ONLINE

[sherbornetimes.co.uk](http://sherbornetimes.co.uk)



## Performance

### 'SECRETS OF THE STOUR'

6 - 9 July

Julian's Bridge, Julian's Road,  
WIMBORNE MINSTER, BH21 1EF.  
7.15pm. £10 / £5. 07976 222260 /  
wimbornecommunitytheatre.co.uk.

"Unique participatory outdoor  
performance with drama, music,  
song, dance, puppets and sound  
installations, exploring the  
importance of our rivers to our  
wellbeing and to wildlife."

### 'COASTAL COMEDY'

9 July

Amphitheatre, Lighthouse, 21  
Kingland Road, POOLE, BH15 1UG.  
7.30pm. 01202 280000 /  
lighthousepoole.co.uk. "Three top  
acts on our outdoors stage."

### FRUITCAKE: 'TALES FROM THE PSYCH WARD'

9 July

Bridport Arts Centre, 9 South Street,  
BRIDPORT, DT6 3NR. 7.30pm. 01308  
424204 / bridport-arts.com. "Comic,  
poet and reformed mental health  
nurse Rob Gee presents a user-  
friendly guide to losing the plot."

### 'LET ME ENTERTAIN YOU'

15 and 16 July

Lighthouse, 21 Kingland Road,  
POOLE, BH15 1UG. 7pm. 01202  
280000 / lighthousepoole.co.uk. "An  
epic night of musical theatre,  
singing and dance."

### 'KEEEEP DANCING'

19 July

Lighthouse, 21 Kingland Road,  
POOLE, BH15 1UG. 7.30pm. 01202  
280000 / lighthousepoole.co.uk.  
"New show from the Strictly Come  
Dancing family."

### 'TREASURE ISLAND'

19 - 30 July

Bristol Old Vic Theatre, King Street,  
BRISTOL, BS1 4ED. 2 and 7pm. £10.  
bristololdvic.org.uk. "Escape to  
Treasure Island with Le Navet Bete  
and their swashbuckling, smash-  
hit comedy for all the family!  
Featuring dastardly pirates,  
tropical islands and a mermaid  
you'll never forget, set sail on the  
Jolly Todger with Jim Lad, Long  
John Silver and a whole host of  
other characters for a hilarious  
voyage across the seas."



'TOSCA'

## Opera Brava

Opera comes to Somerset this July with glorious works by Puccini and Rossini. In partnership with Project Factory CIC, Opera Brava, Britain's leading outdoor touring opera company, is bringing *Tosca* and *The Barber of Seville* to the beautiful grounds of The Bishops Palace in Wells.

Wonderful music and stylish performances are promised in relaxed surroundings, with both operas sung in English. If you have never been to an opera before, this is your chance!

Bring the family and friends, spread a rug on the ground or set out your chairs, have a picnic ready for the interval, and enjoy fabulous entertainment for a fraction of the cost of city offerings.

### OPERA BRAVA: 'TOSCA'

**14 July:** The gardens of The Bishop's Palace, WELLS, BA5 2PD. 7.30pm. £35 / £10. 01749 988111 / bishopsalace.org.uk.

### OPERA BRAVA: 'THE BARBER OF SEVILLE'

**15 July:** The gardens of The Bishop's Palace, WELLS, BA5 2PD. 7.30pm. £35 / £10. 01749 988111 / bishopsalace.org.uk.

## Shaftesbury Arts Centre



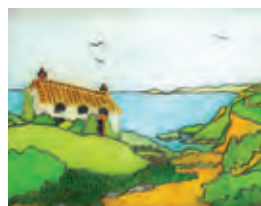
**The Duke**  
Film  
2 and 19 July



**The Fringe**  
Festival  
22 - 24 July



**Mick Fleetwood  
and Friends**  
Live recording  
31 July



**Ann Louise Richards**  
Exhibition  
10 - 16 August



**Jemima Mitchell  
and Lin Walker**  
Exhibition  
17 - 23 August

11 - 13 Bell Street Shaftesbury, Dorset SP7 8AR    01747 854321 • shaftesburyartscentre.org.uk



# Performance

## SHAFTESBURY FRINGE

22 - 24 July

Various locations in SHAFTESBURY, Dorset. [shaftesburyfringe.co.uk](http://shaftesburyfringe.co.uk).

"Music, comedy, dance, theatre and everything in between!"

## LOUISE JORDAN: 'FLORENCE'

23 July

Amphitheatre, Lighthouse, 21 Kingland Road, POOLE, BH15 1UG. 12noon and 3pm. 01202 280000 / [lighthousepoole.co.uk](http://lighthousepoole.co.uk). "Louise Jordan's one-woman performance of original folk songs and storytelling explores the myth of Florence Nightingale, shedding light on her life as a campaigner, writer and social reformer."

## 'THE TIDE'

23 and 24 July

Amphitheatre, Lighthouse, 21 Kingland Road, POOLE, BH15 1UG. Saturday 1.15 and 4.15pm, Sunday 1 and 3.45pm. 01202 280000 / [lighthousepoole.co.uk](http://lighthousepoole.co.uk). "Talawa Theatre Company explore the narratives and experiences of migration within the UK whilst holding a mirror to an evolving British culture."

## 'STRONG ENOUGH'

24 July

Amphitheatre, Lighthouse, 21 Kingland Road, POOLE, BH15 1UG. 12noon and 2.30pm. 01202 280000 / [lighthousepoole.co.uk](http://lighthousepoole.co.uk). "A powerfully optimistic outdoor show that uses circus, comedy and feats of strength to celebrate stories of finding strength in unexpected places."

## DORSET OPERA FESTIVAL

25 - 30 July

Coad Theatre, Bryanston School, Bryanston, BLANDFORD FORUM, Dorset, DT11 0PX. 2 and 7pm. £110 / £40. 07570 366186 / [dorsetopera.com](http://dorsetopera.com). "The home of Country House opera in Southwest England welcomes renowned soloists, a full orchestra and chorus. This year's operas are Puccini's gloriously harrowing 'Manon Lescaut' and Mozart's evergreen, 'Magic Flute'."



## Lucky Pigeons: Brainfools

"With a mix of absurd and extravagant theatre, impressive acrobatics, empathetic and funny stories and a pinch of satirical spice and puppetry, a cast of seven will perform daring aerials and acrobatic feats in this soulful story."

**13 August:** Village Hall Grounds, LITTON CHENEY, DT2 9AU. 6pm. £10 / £5. 01308 482514 / [artsreach.co.uk](http://artsreach.co.uk).

**14 August:** Village Hall Grounds, STALBRIDGE, DT10 2NF. 2pm. £10 / £5. 01963 362355 / [artsreach.co.uk](http://artsreach.co.uk).

## THE LAST BAGUETTE THEATRE COMPANY: 'KING ARTHUR'

26 July

Millennium Green, BRIDPORT, DT6 3JP. 4.30pm. 01308 424204 / [bridport-arts.com](http://bridport-arts.com). "This fun and farcical adventure is a deliberately anarchic and anachronistic re-telling of the Arthurian Legend, with live music, physical comedy and lo-fi acrobatics. And some silly jokes..."

## 'THE RASCALLY DINER'

28 July

First School Field, BROADMAYNE, DT2 8PH. 11.30am. £6 / £5. 07443 659912. "A silly, song-filled, riotous performance that gently explores food provenance, sustainability, and healthy eating."

## 'THE RASCALLY DINER'

28 July

Village Hall Grounds, ALDERHOLT, SP6 3RB. 2.30pm. £6 / £5. 07709 933652 / [artsreach.co.uk](http://artsreach.co.uk). See above.

## 'A SUMMER NIGHT AT THE OPERA'

29 July

Amphitheatre, Lighthouse, 21 Kingland Road, POOLE, BH15 1UG. 6.30pm. [lighthousepoole.co.uk](http://lighthousepoole.co.uk). "A celebration of opera magic in the company of Mozart, Verdi, Bizet, Puccini, Offenbach, Gilbert and Sullivan, and more."

## 'MYTHS AND MONSTERS'

30 July

Amphitheatre, Lighthouse, 21 Kingland Road, POOLE, BH15 1UG. 11am and 2pm. 01202 280000 / [lighthousepoole.co.uk](http://lighthousepoole.co.uk). "Join Squashbox Theatre as they explore the myths and legends of ancient Greece using a quirky and ingenious blend of puppetry, storytelling, live music and comedy."

## 'ALRIGHT?'

5 August

Bridport Arts Centre, 9 South Street, BRIDPORT, DT6 3NR. 7.30pm. 01308 424204 / [bridport-arts.com](http://bridport-arts.com).

## 'CHARLIE LOCKE AND THE QUEST FOR CONFIDENCE'

10 August

Bridport Arts Centre, 9 South Street, BRIDPORT, DT6 3NR. 7.30pm. 01308 424204 / [bridport-arts.com](http://bridport-arts.com).

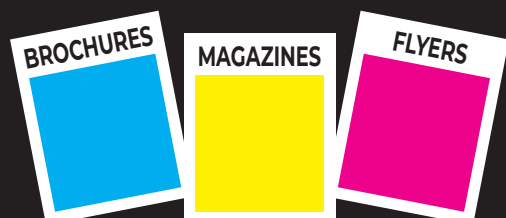
"Theatrical experience inspired by situations that children face as they grow through pre-adolescence and into the tween years."



## THE THREE INCH FOOLS: 'TWELFTH NIGHT'

21 August

Higher Orchard, SANDFORD ORCAS, DT9 4RP. 7pm. £16 / £8. 01963 220208 / [artsreach.co.uk](http://artsreach.co.uk). "Prepare for an open-air evening of mischief and hilarity as five actors present an inventive take on this rip-roaring comedy, fit for all the family."



((acoustic))  
DISTRIBUTION

We deliver any marketing material

Call Will on 07397 853006

[acousticdistribution@btinternet.com](mailto:acousticdistribution@btinternet.com)

[acousticdistribution.co.uk](http://acousticdistribution.co.uk)

## Next issue SOMERSET ART WEEKS 2022

Deadline for advertising and editorial: 31 July

EVOLVER MAGAZINE SUPPLEMENT





Sherborne Art Club & Sherborne *Arts*  
are pleased to announce the return of the

## Sherborne Open Art Exhibition 2022

AT THE DIGBY HALL, HOUND ST, SHERBORNE, DT9 3AA

Sat 23rd - Sun 31st July 10am - 5pm  
(2pm on the 31st)

**FREE ADMISSION**

With thanks  
to our main  
sponsor



MOGERS  
DREWETT

ALL ENTRY DETAILS ARE AVAILABLE AT

**WWW.SHERBORNEARTS.ORG**

Hand in days: Fri 15th July 1pm - 6pm & Sat 16th July 10am - 1pm



Laurence Belbin 'Summer Evening'

# RWA

## 169 Annual Open Exhibition

Be part of the South West's original  
Open Exhibition.

**SUBMISSIONS OPEN 29 JUNE - 11 AUGUST 2022**



Present your work to thousands of art buyers in our  
brand-new galleries & online. Generous cash prizes.

Exhibition dates 8 October - 8 January 2023

rwaopen.co.uk 0117 906 7601

#RWA169 curating@rwa.org.uk

Royal West of England Academy, Queens Road, Clifton, Bristol, BS8 1PX

Image: 168 Annual Open Exhibition, installation view, RWA, 2021. Photo: Alice Hemdy.

# ARTCETERA

EST. 1970

## Picture Framing & Artists Materials



01202 423408 artcetera853@gmail.com 853 Christchurch Road BH7 6AR



## PORT REGIS

Motcombe Park  
Shaftesbury  
Dorset SP7 9QA  
portregis.com

Port Regis is a delightful preparatory school for day and  
boarding children aged 2 - 13.

We are seeking to recruit a part-time Ceramics Teacher  
(3 days a week, term time only) who can teach a wide  
range of construction skills to 7 - 13 year olds and has  
knowledge of process from clay preparation to glazing.

The successful candidate can expect:

*To benefit from excellent and spacious  
departmental facilities*

*A competitive salary and benefits package*

*To join an exceptional working environment  
and staff team*

For full details of the roles and application procedure,  
please visit our website [portregis.com](http://portregis.com)  
(key information / staff vacancies)

Early applications encouraged.

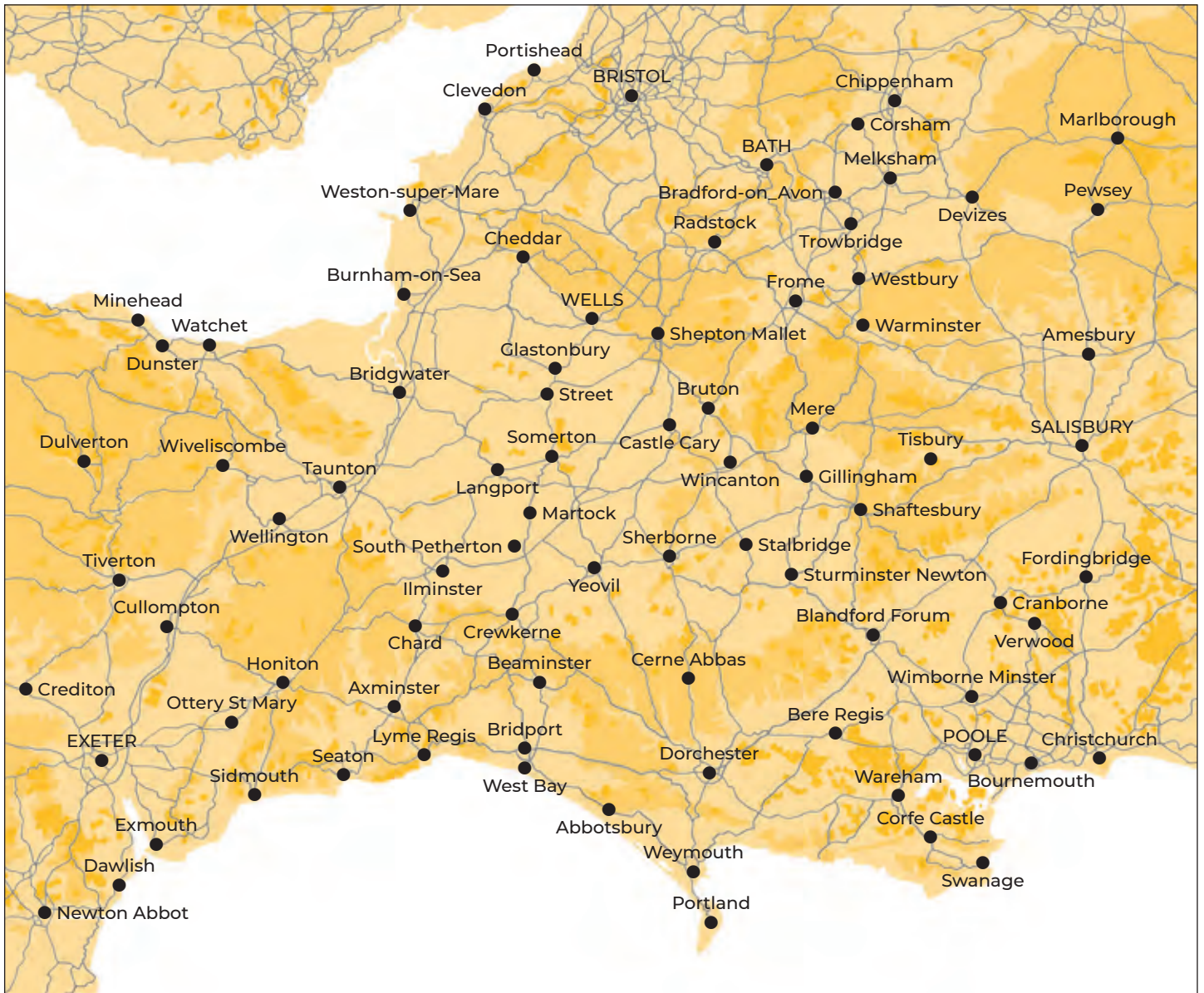
*Port Regis is committed to safeguarding and promoting the welfare of  
children. The successful applicant will be required to undertake an  
Enhanced DBS Disclosure.*

Charity No: 306218



# EVOLVER MAGAZINE

## WESSEX



Follow **EVOLVER** MAGAZINE on Instagram

**evolvermagazine**



### EVOLVER MAGAZINE

THE WESSEX ARTS AND CULTURE GUIDE

Editor SIMON BARBER

Assisted by SUZY RUSHBROOK

Evolver Writer

FIONA ROBINSON [fionarobinson.com](http://fionarobinson.com)

Graphic Design SIMON BARBER

Website AZTEC MEDIA

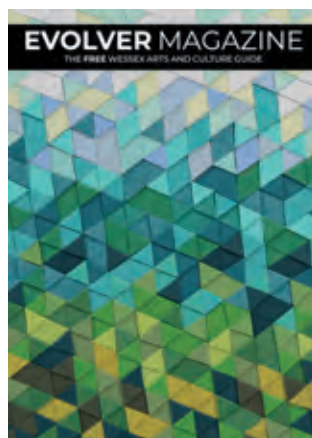
Front Cover NAOMI KENDALL 'SWAY'

Evolver Prize 2022 Winner

### EVOLVER MEDIA

8 BUCKLAND ROAD, PEN MILL TRADING ESTATE,  
YEOVIL, SOMERSET BA21 5EA

Email [simon@evolver.org.uk](mailto:simon@evolver.org.uk)



Telephone 01935 808441

Website [evolver.org.uk](http://evolver.org.uk)

Instagram [evolvermagazine](https://www.instagram.com/evolvermagazine)

Twitter @SimonEvolver

Published by EVOLVER MEDIA LIMITED

Pre-Press by FLAYDEMOUSE  
01935 479453 / [flaydemouse.com](http://flaydemouse.com)

Printed by WARWICK PRINTING  
[warwickprinting.co.uk](http://warwickprinting.co.uk)

Distributed by ACOUSTIC  
07397 853006 / [acousticdistribution.co.uk](http://acousticdistribution.co.uk)

**DEADLINE FOR EVOLVER MAGAZINE 127**

September and October 2022

SUNDAY 7 AUGUST



# Outlets and Sponsors

**EVOLVER MAGAZINE** is available **FREE** at the following Wessex outlets:

ABBOTSBURY: Abbotsbury Studio, Dansel Gallery. AXMINSTER: Archway Bookshop, Axminster Arts Café, Sublyme Café. BATH: Bath Artists' Studios, Beaux Arts, The Bell Inn, The Edge / ICIA, Holburne Museum of Art, Michael Tippett Centre, University of Bath, Victoria Art Gallery. BEAMINSTER: Little Toller Books. BLANDFORD: Blandford Fashion Museum, Bryanston Arts Centre, Forum Café, Forum Framers. BOSCOMBE: Artcetera. BOURNEMOUTH: All Fired Up, Miramar Hotel, Pavilion Dance, Royal Bath Hotel, Russell-Cotes Museum & Art Gallery. BOWER HINTON: The Hollies Hotel. BRADFORD ON AVON: Wiltshire Music Centre. BRIDGWATER: Bridgwater Arts Centre, Clayhill Arts, Engine Room. BRIDPORT: Beach & Barnicott, Bridport Arts Centre, Bridport Old Books, The Bull Hotel, Clocktower Music, Literary and Scientific Institute, Lyric Theatre. BRISTOL: Arnolfini, Bocabar, The Bristol Artisan, Bristol Beacon, Bristol Fine Art, Centrespace, Clifton Fine Art, Create Centre, Folk House, Jamaica Street Artists, Lime Tree Gallery, Bristol Old Vic, PRSC Gallery, RWA, Spike Island, St George's, Tobacco Factory, Trinity Centre, UWE, Watershed. BROADWINDSOR: Redlands Yard. BRUTON: At The Chapel, Hauser and Wirth. BUDLEIGH SALTERTON: Brook Gallery. BURNHAM ON SEA: Princess Theatre & Arts Centre, Seabreeze Gallery. CASTLE CARY: Bailey Hill Bookshop, David Simon Gallery, Trowbridge Gallery. CHARD: Art Café, Barleymow's, Hornsbury Mill Hotel. CHARLTON: Glebe Gallery. CHARMINSTER: Flux Art Supplies. CHEDDAR: Cheddar Art School, Sketch Café. CHEDDON FITZPAINE: Hestercombe Gallery. CHESIL BEACH: Fine Foundation Centre. CHIPPENHAM: Chippenham Museum. CHRISTCHURCH: Hatch Gallery, Hayloft Gallery, Red House Museum, Regent Centre. CLEVEDON: Fizz Gallery, Studio 3. CORFE CASTLE: Boilerhouse Gallery, Gallery 41, Morton House Hotel, Village Stores. CORSHAM: Pound Arts. CREWKERNE: Art4All / ArtyCrafty. CROCKERTON: Bull Mill Arts. CROWCOMBE: Halsway Manor. CULLOMPTON: Cullompton Community College. CULMSTOCK: The Strand Stores. DEVIZES: Wiltshire Museum. DORCHESTER: Dorchester Arts, Duke's, Frank Herring & Sons, Gallery on The Square, The Little Keep, Vinyl Van. EAST LAMBROOK: East Lambrook Manor Gardens. EXETER: Academy of Music, Barnfield Theatre, The Cavern, Corn Exchange, Exeter School of Art, Glorious Art Cafe, Phoenix Arts Centre, Royal Albert Memorial Museum, Southgate Gallery. FROME: Bat Print Studio,

Black Swan Arts, Cheese and Grain, Fiat Lux, Merlin Theatre, Mount, Raves From The Grave, Rook Lane Arts, Rise Centre, Whittox Gallery. GILLINGHAM: The Idea Works, Slade Centre. GLASTONBURY: Abbey Muse Gallery, Bocabar, Facets Of Avalon, Glastonbury Galleries, Heart Of The Tribe Gallery, Red Brick Building, Rural Life Museum. HEMYOCK: Healthy Living Centre. HESTERCOMBE: Hestercombe Gallery. HIGHCLIFFE: In The Frame. HOLTON HEATH: Holton Lee. HONITON: The Beehive, Boston Tea Party, Hybrid Gallery, School Of Art And Wellbeing, Strummer Pink, Thelma Hulbert Gallery. ILMINSTER: Courtyard Gallery Cafe, Dillington House, Ilminster Arts Centre. KEYNSHAM: Chocolate Quarter. LANGPORT: 4 Every Cloud, Art Tea Zen, Hanging Gallery, Shakspeare Glass. LYME REGIS: Blue Lias, Coombe Street Gallery, Fine Art Framing, Marine Theatre, Studio 19. LYTCHETT MINSTER: Barn Cafe, Courtyard Craft Centre. MARLBOROUGH: Framemakers, Rabley Contemporary Drawing Centre. MARTOCK: Martock Gallery Yandles Cafe. MILTON ABBAS: Dorset Crafty Barn, Luccombe Hub. MINEHEAD: Courtyard Framing, Leo Davey Gallery, Regal Theatre. MORCOMBELAKE: Artwave West. MUCHELNEY: John Leach Gallery. NEW MILTON: Forest Arts. NEWTOWN: R. C Arts. NORTH CURRY: Community Café. OTTERTON: Otterton Mill. PENN HILL: Josephine Wall Shop. PEWSEY: McNeill Gallery. POOLE: Arts University Bournemouth, Boiler Room Records, Bournemouth University Atrium Gallery, Guildhall Gallery, Lighthouse, Gallery Upstairs, Originals, Poole Museum, Poole Violins, Towngate Gallery And Framing. PORLOCK: Churchgate Gallery, Melody Art. PORTLAND: B-Side Outpost, White Stones. POUNDBURY: Gallery On The Square, Store 6. SALISBURY: City Hall, Fisherton Mill, Framemakers, Noble Art Supplies, Salisbury Arts Centre, Salisbury Museum, Salisbury Playhouse, Studio 53, Wiltshire Gallery, Young Gallery. SEATON: Arts Café, Savooni Art Gallery. SEAVINGTON: Village Shop. SHAFTESBURY: The Cygnet, Grosvenor Hotel, Pictureframes, Shaftesbury Arts Centre. SHEPTON MALLET: One Craft Gallery. SHERBORNE: Artslink, Elementum Gallery, New Digby Hall, Old Barn Framing Gallery, Winstone's. SIDMOUTH: East Devon Art Academy, Flo and Us, Kennaway House, Winstone's. SOMERTON: ACE Arts, Gifted Company & Gallery Coffee Shop. SOUTH CADBURY: Chapel Cross Tea Rooms. SOUTH PETHERTON: David Hall. STALBRIDGE: Dike & Sons. STOBOROUGH: Furzebrook Studios. STOKE ST GREGORY: Willow & Wetlands Centre. STOURHEAD: First View Gallery. STREET: Millfield

School Atkinson Gallery, Strode Theatre. STURMINSTER NEWTON: The Exchange, Poet's Corner, Wessex Photographic. SWANAGE: 4Matt Framers and Gallery, Durlston Castle, Hollinghead Studio Gallery, L'Artishe Gallery, Mowlem Theatre, Mulberry Bush Gallery, Purbeck New Wave Gallery, Quarr Gallery, Sansom Gallery. SYMONDSBURY: Sou'-Sou'-West. TAUNTON: Brewhouse Theatre, CIC CIC, Fine Art And Framing, Jane Amour, Mount Somerset Hotel, Quantock Art And Framing, Queen's College, Tacchi-Morris Arts Centre, University Centre Somerset. TINCLETON: Tincleton Gallery. TISBURY: Messums Wiltshire. TIVERTON: Lantic Gallery. TROWBRIDGE: Arc Theatre, Court Street Gallery, Drawing Projects, The Lamb, Trowbridge Arts, Trowbridge Museum. VERWOOD: Campbell & Rose Gallery, The Hub. WAREHAM: Creative Gallery, Priory Hotel, Rex Cinema. WATCHET: East Quay, Watchet Gallery. WELLINGTON: Old Brick Workshop. WELLS: A2 Gallery, Andelli Art, Bishop's Eye, Good Earth, Heritage Courtyard Studios, Somerset Guild of Craftsmen Gallery and Shop. WEST BAY: Sladers Yard. WEST COKER: Lanes, Old School Room. WESTHAY: Somerset Crafts. WESTON-SUPER-MARE: Frame Station, Playhouse, Weston College. WEYMOUTH: Weymouth College, Weymouth Pavilion. WILLITON: Breeze Art Gallery. WIMBORNE: Allendale House, Square Records, Walford Mill Craft Centre. WINSCOMBE: Sidcot Arts Studio. WIVELISCOMBE: Community Office. WOODBURY: Woodbury Studio Gallery. WORTH MATRAVERS: Burngate Stone Centre. WRINGTON: Barleywood Studios. YEOVIL: Octagon Theatre, Yeovil Art Space. YETMINSTER: Old School Gallery.

Plus selected TOURIST INFORMATION CENTRES and LIBRARIES throughout Wessex

## EVOLVER SPONSORS

ACE Arts  
Acoustic Distribution  
Artcetera  
Aztec Media  
B-Side  
Black Swan Arts  
Boilerhouse Gallery  
Bridport Arts Centre  
The Creative Gallery  
Dorset Visual Arts  
East Quay  
Fisherton Mill  
Gallery on the Square  
Heart of the Tribe Gallery  
Lyme Bay Arts  
Project Factory  
Shaftesbury Arts Centre  
The Slade Centre  
Sladers Yard  
Somerset Art Works  
Tincleton Gallery  
The Vanner Gallery  
Wiltshire Creative





SEPT  
08-11  
2022

# B-SIDE FESTIVAL IS BACK • PORTLAND DORSET 2022

#BSIDE22

ART|FILM|SOUND|DIGITAL

Full programme and details of workshops, walks, tours,  
pop up surprises & the infamous final day parade at  
[www.b-side.org.uk](http://www.b-side.org.uk)



Funded by



Made possible with  
**Heritage  
Fund**



Supported using public funding by  
**ARTS COUNCIL  
ENGLAND**



## Visual Arts

### 'A CELEBRATION OF SKY'

**6 August - 10 September**

Ace Arts, Market Place, SOMERTON, TA11 7NB. Tuesday - Saturday 10am - 5pm. 01458 273008 / acearts.co.uk. "Lino prints by Steve Manning."

### PENNIE ELFICK: 'TALKING TO MYSELF'

**6 August - 11 September**

Taunton Brewhouse, Coal Orchard, TAUNTON, TA1 1JL. Monday - Friday 10am - 4pm. 01823 283244. "Atmospheric reductive compositions that play with colour, geometry and light. A must see."

### INGRID POLLARD: 'THREE DROPS OF BLOOD'

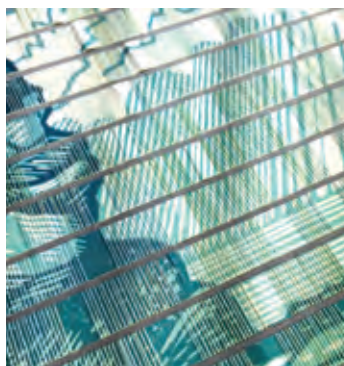
**6 August - 29 October**

Thelma Hulbert Gallery, Dowell Street, HONITON, EX14 1LX. Wednesday - Saturday 10am - 5pm. 01404 45006 / thelmahulbert.com.

### 'IN THREE MINDS'

**10 - 16 August**

The Gallery, Shaftesbury Arts Centre, Bell Street, SHAFTESBURY, SP7 8AR. Monday - Saturday 10am - 4pm. 01747 855243. Work by Anne-Louise Richards, Shane Pardoe, and Deborah Pardoe.



### DEBBY KIRBY AND ROBIN MACKENZIE: 'FINE LINES'

**10 - 30 August**

Fine Foundation Gallery, Durlston Castle, Lighthouse Road, SWANAGE, BH19 2JL. 10.30am - 5pm. 07979 812083.

### BLANDFORD ART SOCIETY

**15 - 20 August**

The Corn Exchange, BLANDFORD FORUM, DT11 7AD. 10am - 5pm. blandfordartsociety.weebly.com.



BEN RIVERS 'LOOK THEN BELOW' (Still from super 16mm film, 2019)

## Forest: Wake this Ground

"Arnolfini invites audiences to celebrate what lies above and below the forest floor with *Forest: Wake this Ground*, a major group exhibition including artists, writers, filmmakers, and composers, from across the globe. Works in this exhibition recycle, reuse, and repurpose the forest's resources, reminding us of their ancient past and their fragile future."

**9 July - 2 October:** Arnolfini, 16 Narrow Quay, BRISTOL, BS1 4QA. 11am - 6pm. 0117 917 2300 / arnolfini.org.uk.

### DOT WOOD: 'LANDSCAPES, SEASCAPES, HEDGEROWS'

**15 August - 4 September**

Sou'-Sou'-West Arts Gallery, Symonds Estate, BRIDPORT, DT6 6HG. 10.30am - 4.30pm. 01308 301326 / sousouwest.co.uk.

### JEMIMA MITCHELL AND LIN WALKER

**17 - 23 August**

The Gallery, Shaftesbury Arts Centre, Bell Street, SHAFTESBURY, SP7 8AR. Monday - Saturday 10am - 4pm. 01747 855243. Ceramics.

### CLEVEDON ART CLUB

**19 - 29 August**

Science Atrium, Clevedon School, Valley Road, CLEVEDON, BS21 6AH. Monday - Saturday 10.30am - 6pm. Sunday 2 - 6pm. £1. clevedonartclub.co.uk. "64th annual open exhibition featuring fine art and 3D works."



### DEREK NICE

**20 - 27 August**

Heritage Courtyard Gallery, 6 Heritage Courtyard, WELLS, BA5 2RR. Monday - Saturday 10.30am - 4pm. 07974 255016 / heritagecourtyardstudio.com. "This exhibition of works by the late Derek Nice is a celebration of his life as a sculptor, painter, constructor, photographer and raconteur."

### BRUTON ART SOCIETY

**20 - 27 August**

King's Bruton Memorial Hall, BRUTON, BA10 0ED. 10am - 4pm. brutonartsociety.co.uk.

### RAVI BUTALIA: 'PAPERWORKS'

**24 August - 6 September**

The Gallery, Shaftesbury Arts Centre, Bell Street, SHAFTESBURY, SP7 8AR. Monday - Saturday 10am - 4pm. shaftesburyartscentre.org.uk.

### MOSTERTON ART GROUP

**27 August - 3 September**

Skyrm Rooms, Yarn Barton, BEAMINSTER, DT8 3EF. 10am - 5pm. 01308 867581.

### SSW SUMMER OPEN:

**'UNRESTRICTED'**

**27 August - 18 September**

Sou'-Sou'-West Arts Gallery, Symonds Estate, BRIDPORT, DT6 6HG. 10.30am - 4.30pm. 01308 301326 / sousouwest.co.uk.



# FISHERTON MILL

BEST CAFE IN WILTSHIRE



— SALISBURY

GALLERY



CAFE



STUDIOS



108 Fisherton Street, Salisbury, SP2 7QY

Monday - Friday 10am-5pm, Saturday 9.30am - 5.30pm



WWW.FISHERTONMILL.CO.UK





# Music

## July and August 2022

### THE NEIL BURNS ORGAN TRIO WITH TERRY QUINNEY

1 July

The Red Hot Jazz Club, The Red Brick Building, Morland Road, GLASTONBURY, BA6 9FT. 7.30pm. £12 / £10. [redbrickbuilding.co.uk](http://redbrickbuilding.co.uk). "Groove-heavy, hard-swinging Blue Note classics and originals, with some great boogaloo and funk thrown in."



### HANNAH WILLIAMS AND THE AFFIRMATIONS

1 July

Fiddlers, Willway Street, BRISTOL, BS3 4BG. 8.15pm. £11.99. 0117 987 3403. [bristolbeacon.org](http://bristolbeacon.org). "Bristol-based band Hannah Williams and the Affirmations are well-renowned across the global soul scene for their retro-inspired sound."



### OLD BABY MACKEREL

1 July

Village Hall, WINTERBORNE STICKLAND, DT11 0NT. 7.30pm. £12 / £5. 01258 880920 / [artsreach.co.uk](http://artsreach.co.uk). "The rhythmic sounds of fiddle, banjo, mandolin, guitar and double bass are sure to get knees bouncing and elbows swinging to the virtuosic sound of blistering solos and sweet harmonies."



## Richard Hawley

"Richard Hawley has carved out a distinct and deserved legacy within rock-and-roll. His accolades are wide-ranging and impressive from being Pulp's guitarist to collaborations with Arctic Monkeys, Paul Weller, and Elbow."

**6 July:** Bath Forum, 1A Forum Buildings, BATH, BA1 1UG. 8pm. £35.50 / £22.50. 01225 443114 / [bristolbeacon.org](http://bristolbeacon.org).



### ACCORDION CONCERT

2 July

Halsway Manor, near CROWCOMBE, TA4 4BD. 8pm. £1. [halswaymanor.org.uk](http://halswaymanor.org.uk). "Concert by Amy Thatcher, Paul Hutchinson, and Murray Grainer."

### DAVID HALLS

5 July

St Michael the Archangel, Church Street, LYME REGIS, DT7 3DB. 7.30pm. £12. 07710 805029 / [sworgansociety.org](http://sworgansociety.org). Organ recital.

### CONCERT

7 July

The Church of St Philip and St James, NORTON ST PHILIP, BA2 7LY. 1pm. £5. 01373 834488. "Charismatic singer Livvy Hylton-Smith is joined by guitarist Bob King to present an eclectic range of music."

### OLD BABY MACKEREL

8 July

Village Hall, MARNHULL, DT10 1JZ. 7.30pm. £10 / £5. 01258 820458 / [artsreach.co.uk](http://artsreach.co.uk). See 1 July.

### SWANAGE JAZZ FESTIVAL

8 - 10 July

Various locations in and around SWANAGE, Dorset. [swanagejazzfestival.co.uk](http://swanagejazzfestival.co.uk). "Line-up includes The Alan Barnes Octet, Nigel Price with his Wes Reimagined project, Art Themen's New Directions Quintet, Greg Abate, and new rising stars like Xhosa Cole, Alex Clarke Quartet, Mark Kavuma and Jo Harrop."

### THE SOUND OF THE STREETS

8 - 10 July

Castle Green and Goodlands Gardens, TAUNTON. Free entry. [thesoundofthestreets.com](http://thesoundofthestreets.com). "Three glorious days of music and celebration."



### PRIDDY FOLK FESTIVAL

8 - 10 July

Village Green, PRIDDY, BA5 3BB. £124 / £106. [priddyfolk.org](http://priddyfolk.org). "Set in a drop-dead-gorgeous location high up on the Mendip Hills, yet only half an hour from Bristol and Bath, this family-friendly festival is now in its 30th year. Headliners include Jiggy, Manran (above) and De Temps Antan."

### BUDLEIGH MUSIC FESTIVAL

8 - 16 July

St Peters Church, 7 The Lawn, BUDLEIGH SALTERTON, EX9 6LT. [budleighmusicfestival.co.uk](http://budleighmusicfestival.co.uk). "Budleigh Music Festival is back with a week-long programme of concerts."



We are a funky, independent record shop stocking a great range of new and preloved vinyl, specialising in Reggae, Hip Hop, Soul, Funk, World, Electronic, Jazz, Blues, Alternative, Indie, Rock, Pop and more


**8a Pope Street, Brewery Square, Dorchester, DT1 1GW**  
Tuesday to Saturday from 10am




**CLOCKTOWER MUSIC**, Bridport's vinyl record shop welcomes our satellite shop **CLOCKTOWER TOO**

*Clocktower Too specialises in all styles of music on CD, plus a selection of music memorabilia and vinyl records*

**35a South Street, Bridport, Dorset DT6 3NY**  
Open Monday, Wednesday, Friday and Saturday, 9.30am - 3.30pm



## Exhibit A

Artists and photographers are invited to submit work for next issue's page 3 Exhibit A by emailing images to: [simon@evolver.org.uk](mailto:simon@evolver.org.uk)



## SOMERSTOCK

9 July

Recreation Ground, SOMERTON, Somerset. somerstock.com. "One-day family-friendly music festival."

## SALISBURY CHAMBER CHORUS: 'ACROSS THE POND'

9 July

St. John's Church, Church Street, TISBURY, SP3 6NH. 7.30pm. £15. salisburychamberchorus.org. "Concert celebrating English and American music."



## PAUL SARTIN AND ÇİĞDEM ASLAN

9 July

Halsway Manor, near CROWCOMBE, TA4 4BD. 8pm. £12. halswaymanor.org.uk. "Folk songs from around the world."

## 'THE MUSIC AND STORIES OF RUTH TONGUE'

10 July

Carew Arms, CROWCOMBE, Somerset TA4 4BD. 6pm. Free entry. halswaymanor.org.uk. "English folk artist Paul Sartin shares his research about the Quantock folklorist Ruth Tongue."

## YEOVILTON MILITARY WIVES CHOIR

13 July

Martock Church, MARTOCK, TA12 6J. 7.30pm. £12 / £10. 07790 225357.

## OSIBISA

15 July

Amphitheatre, Lighthouse, 21 Kingland Road, POOLE, BH15 1UG. 7pm. lighthousepoole.co.uk. "Afro-rock legends."

## CALLUM SMART & RICHARD UTTLEY

15 July

Bridport Arts Centre, 9 South Street, BRIDPORT, DT6 3NR. 11.30am. 01308 424204 / bridport-arts.com.



KATE RUSBY

## Sidmouth Folk Festival

"There's an outstanding line-up of shows, dance performances, workshops, ceilidhs and entertainment for all ages that builds on the ongoing success of England's most resilient of folk gatherings that's been running since 1955. Headline shows feature the best in contemporary folk music with Kate Rusby, Show of Hands, The Spooky Men's Chorale, Eddi Reader, Spiers and Boden, the Yves Lambert Trio, Fara and Jez Lowe, with pre-festival concerts from Steeleye Span and The Fisherman's Friends. The festival will also feature a unique concert honouring one of the true greats of the traditional music world - the late, great Norma Waterson, who died earlier this year, aged 82. Led by her husband and festival patron Martin Carthy, and daughter Eliza Carthy, the show will also feature the talents of friends and admirers, including Martin Simpson, John Kirkpatrick, Emily Portman, Sandra Kerr, Jim Causley, Jo Freya, Fi Fraser, Saul Rose and David Delarre."

**29 July - 5 August:** Various locations in SIDMOUTH, Devon. 01395 577952 / sidmouthfolkfestival.co.uk.

## 'JAZZ IN THE THEATRE: BENNY GOODMAN'

15 July

Bridport Arts Centre, 9 South Street, BRIDPORT, DT6 3NR. 8pm. 01308 424204 / bridport-arts.com. "Benny Goodman's joyous, swinging music will be presented by clarinettist Charlie Hearnshaw, accompanied by Philip Clouts at the piano."

## BRISTOL HARBOUR FESTIVAL

15 - 17 July

Harbourside, BRISTOL, BS1. 0117 927 6614 / bristolharbourfestival.co.uk. "Back for its 50th anniversary and it's going to be a memorable evening for Bristol! Family activities, circus performers, delicious food stalls, visiting vessels and live music across all the stages on Bristol's waterfront."

## TOLPUDDLE MARTYRS' FESTIVAL

15 - 17 July

Tolpuddle Martyrs Museum, Dorchester Road, TOLPUDDLE, DT2 7EH. tolpuddlemartyrs.org.uk. "Yearly festival with music from Billy Bragg, Peat & Diesel, Rhoda Dakar, The Leylines, Skimmity Hitchers and more."

## MARY LEE FAMILY BAND + OUTLANDISH + SUGAR RUSH + GYPSY JUKEBOX

16 July

Amphitheatre, Lighthouse, 21 Kingland Road, POOLE, BH15 1UG. 1pm. lighthousepoole.co.uk. "Grass roots music."



## THE GIGSPANNER BIG BAND AND RAYNOR WINN: 'SALT LINES'

17 July

Lighthouse, 21 Kingland Road, POOLE, BH15 1UG. 7.45pm. 01202 280000 / lighthousepoole.co.uk. "Celebrating the South West Coast Path in traditional songs performed by a collective of some of the biggest names in British folk music and newly-written words by Raynor Winn, author of The Salt Path, her best-selling memoir of walking the Path's 630 miles."

## JAMES TAYLOR QUARTET

22 July

Amphitheatre, Lighthouse, 21 Kingland Road, POOLE, BH15 1UG. 7.30pm. 01202 280000. "Brilliantly funky acid jazz standard bearers."

## CHAGSTOCK FESTIVAL

22 and 23 July

Whiddon Down, near CHAGFORD, Devon. chagstock.info.

## BRIDPORT FOLK FESTIVAL

22 - 24 July

Various locations, BRIDPORT, Dorset. bridportfolkfestival.com. "Music, dancing, music sessions, workshops, food, stalls, bands, lots to see and hear!"

The Electric Broom Cupboard presents

# Orchard Popfest

South Somerset

THE MONOCHROME SET • THE JUNE BRIDES • THE CHESTERFIELDS  
HELEN McCOOKERYBOOK • THE RHYNES • THE LEAKING MACHINE • PALOOKA 5

SATURDAY 16 JULY 2022

DJ Johnny Dee • DJ Alan Flint • DJ Andrew Perry

North Down Farm, Crewkerne, TA18 7PL • Gates 12noon, live music from 2pm, curfew 11pm  
Bar and food • Tickets from Eventbrite: £20 / under 16s free / camping £10



## WILKSWOOD REGGAE FESTIVAL

22 - 24 July

Wilkswood Farm, High Street,  
LANGTON MATRAVERS, BH19 3HD.  
wilkswoodrootsreggaeefestival.co.uk.



### MARTHA WAINWRIGHT + ROSEANNE REID

28 July

Redgrave Theatre, Percival Road,  
Clifton, BRISTOL, BS8 3LE. 8pm.  
£29.98. 0117 315 7800 /  
bristolbeacon.org. "Raw depth and  
uncompromising defiance."

### ALTITUDE

28 - 30 July

BLACKBOROUGH, Devon, EX15 2HJ.  
07763 531733 / altitudedevon.com.

### CAMP BESTIVAL

28 - 31 July

Lulworth Castle, LULWORTH,  
Dorset. campbestival.net.

### WOMAD

28 - 31 July

Charlton Park, near MALMESBURY,  
Wiltshire. womad.co.uk.



### ST PAUL AND THE BROKEN BONES

29 July

02 Academy, Frogmore Street,  
BRISTOL, BS1 5NA. 8pm. £29.98. 0117  
927 9227 / bristolbeacon.org.  
"Alabama eight-piece St Paul & The  
Broken Bones pack a soulful punch  
with their sound, blending gospel,  
R&B, rock'n'roll, funk and  
psychedelia."



THE MONOCHROME SET

## Orchard Popfest

"The Electric Broom Cupboard returns with a new venture, Orchard Popfest, an all-dayer curated by The Chesterfields, featuring music by The Monochrome Set, The June Brides, The Chesterfields, Helen McCookerybook, The Rhynes, The Leaking Machine, Palooka 5, DJs Johnny Dee, Andrew Perry and Alan Flint, plus Vinyl Van record stall, food and bar."

**16 July:** North Down Farm, near CREWKERNE, TA18 7PL. Gates  
12noon, music from 2pm. Tickets from Eventbrite: £20 / under 16s  
free / camping available. Instagram: orchardpopfest.

### SIREN

29 and 30 July

Lloyds Amphitheatre, Explore Lane,  
BRISTOL, BS1 5LL. sirenbristol.com.

### FARMFEST

29 and 30 July

Gilcombe Farm Gilcombe, BRUTON,  
BA10 0QE. farmfestival.co.uk.  
"Featuring over 100 acts in the  
electronic, indie, folk, and world  
music genres, plus everything from  
early morning workouts to lively  
kids workshops, riotous jumbles of  
jazz, brass-based bonanzas, stand-  
up comedy, and poetry."

### SOMERSET CHAMBER CHOIR

30 July

Wells Cathedral, Cathedral Green,  
WELLS, BA5 2UE. 7pm. £30 / £25 /  
£15. somersetchamberchoir.org.

### NINEBARROW

30 July

Amphitheatre, Lighthouse, 21  
Kingland Road, POOLE, BH15 1UG.  
8pm. 01202 280000 /  
lighthousepoole.co.uk. "Brilliant  
Dorset-based folk duo."



### DUSTBOWL REVIVAL

1 August

Redgrave Theatre, Percival Road,  
Clifton, BRISTOL, BS8 3LE. 8pm.  
£16.35. 0117 315 7800 /  
bristolbeacon.org. "Joyous revelry."

### TONY ROBERTS AND RICHARD LLEWELYN

4 August

The Church of St Philip and St  
James, NORTON ST PHILIP, BA2  
7LY. 1pm. £5. 01373 834488.  
"Contemporary jazz and folk."

### OUTCIDER FESTIVAL

4 - 7 August

Fernhill Farm, COMPTON MARTIN,  
Bristol, BS40 6LD. 01761 221663 /  
outciderfestival.com. "Two  
alternating stages host 40 original  
acts including The Dreadnoughts,  
Undercover Hippy, Da Fuchaman,  
Crazy Arm, and Skimmity Hitchers.  
Lots of cider and lots of fun."



### SARAH AND THE STRING SYNDICATE

5 August

The Red Hot Jazz Club, The Red  
Brick Building, Morland Road,  
GLASTONBURY, BA6 9FT. 7.30pm.  
£12 / £10. redbrickbuilding.co.uk.  
"Classic swing tunes from the  
Great American Songbook and  
more."

### BURTON BRADSTOCK FESTIVAL OF MUSIC AND ART

16 - 21 August

Various locations in BURTON  
BRADSTOCK, Dorset, DT6.  
burtonbradstockfestival.com.

### PURBECK VALLEY FOLK FESTIVAL

18 - 21 August

Purbeck Valley Farm, CORFE  
CASTLE.  
purbeckvalleyfolkfestival.co.uk.

### BEAUTIFUL DAYS

19 - 21 August

Escot Park, near OTTERY ST MARY,  
Devon. beautifuldays.org. "Family  
music festival featuring 7 stages,  
amazing site art, a huge children's  
area, comedy, theatre, family  
camping, licensed real ale bars  
and a great choice of food and  
craft stalls."

Subscribe to  
**EVOLVER** MAGAZINE  
online at  
**evolver.org.uk**

Six bi-monthly issues for £25



The  
**Edington Music Festival**  
A Festival of Music within the Liturgy

**We're back! The 65th festival**  
**21st - 28th August 2022**

**Creation and Recreation**

Director: Robert Quinney

Music includes

Vaughan Williams *Mass in G*  
Copland, Dove

Michael Haydn *Requiem*  
Matins & Compline plainchant

edingtonfestival.org • info@edingtonfestival.org





**THE SIDMOUTH FOLK FESTIVAL**  
29TH JULY - 5TH AUGUST 2022

**Kate Rusby • Show of Hands**  
The Spooky Men's Chorale  
**Eddi Reader • Martin & Eliza Carthy • Blowzabella**

Pre Festival Thursday 28 July Steeleye Span  
Friday 29 July Fisherman's Friends

Spiers & Boden • Peatbog Faeries • Edward II  
Martin Simpson • Grace Petrie • Daoiri Farrell  
Yves Lambert Trio • Melrose Quartet  
Centralbal • Matt Cranitch & Jackie Daly  
Jackie Oates & John Spiers • Chris Wood • Fara  
Jez Lowe • Will Pound & Jenn Butterworth  
John Kirkpatrick • Alistair Anderson • Sheelanagig  
Granny's Attic • Mairead Green & Anna Massie  
Emily Portman & Rob Harbron • Ryan Young  
Miranda Sykes & Hannah Martin • Jim Causley  
Jack Rutter • Cohen Braithwaite-Kilcoyne  
Rosie Hood Band • Pedler // Russell • Molraí  
Hannah Sanders & Ben Savage  
... and many more

A festival with a view:  
a seaside town set in majestic  
red cliffs and a lush green valley

**Great Value Tickets available now**

English Folk SIDMOUTH www.sidmouthfolkfestival.co.uk  
or call the Box Office 01395 577952 folk radio AFO



**THE CHESTERFIELDS**  
**OUR SONGBIRD HAS GONE** Mr. Mellow's MUSIC

**RAZORCUTS THE JUNE BRIDES**  
**McCARTHY TV PERSONALITIES**  
**THE FALL THE LOFT THE MONOCHROME SET**  
**THE BODINES THE COLOURFIELD**  
**JOSEF K ORANGE JUICE**  
**THE FIRE ENGINES HEAVENLY**  
**DELTA 5 THE HOUSE OF LOVE**  
**THE WALTONES THE GO-BETWEENS**  
**CLOSE LOBSTERS LLOYD COLE**  
**THE BLUE AEROPLANES GANG OF FOUR**  
**ALTERED IMAGES SONIC YOUTH**  
**THE CLEANERS FROM VENUS SANDIE SHAW**  
**BMX BANDITS THE DARLING BUDS**  
**DEPARTMENT S THE VASELINES**  
**AZTEC CAMERA THE SMITHS JAMES**  
**THE BEAT HOTEL THE GO-BETWEENS**

**THE CHESTERFIELDS**  
**OUR SONGBIRD HAS GONE**

New single available Friday 15 July on Mr Mellow's Music

 The\_Chesterfields

Mr. Mellow's MUSIC



**Priddy Folk Festival**

**PRIDDY FOLK FESTIVAL**

**8TH - 10TH JULY 2022**  
PRIDDY VILLAGE GREEN  
SOMERSET BA53BB

**JIGGY \* MANRAN**  
**DE TEMPS ANTAN**

**FLATS AND SHARPS \* TRIALS OF CATO**  
**PERKELT \* PONS AELIUS**

**SOLANA \* THE MAGPIES \* LUCY WARD \* COPPER VIPER**  
**THE DRYSTONES \* THE SHACKLETON TRIO \* THE RIN TINS**  
**RACHEL MCSHANE AND THE CARTOGRAPHERS**  
**GILMORE+ROBERTS \* JEZ LOWE \* RYAN YOUNG**  
AND MANY MORE!!!!

WORKSHOPS, SESSIONS, CELEBRATE DANCE FESTIVAL, CHILDREN'S FESTIVAL AND THE PRIDE

TICKETS AND INFO FROM  
**PRIDDYFOLK.ORG**



**PEIXOS**  
By Sarruga

**23-24 September 2022**  
Weymouth Town Centre

Activate Performing Arts are bringing another  
spectacle to Weymouth this September.

Peixos by Sarruga is a spellbinding parade  
inside an eery underwater world featuring  
luminescent sea creatures and gigantic  
bicycle-powered wizardry.

**InsideOut**

activateperformingarts.org.uk

Presented in partnership with  
We Are Weymouth and Weymouth Town Council

 **WE ARE WEYMOUTH**  **WEYMOUTH TOWN COUNCIL**  **Dorset Council**  **ARTS COUNCIL ENGLAND**



# Performance

July and August 2022



PENNY NEWELL 'POETRY LEDGE'

## B-Side Festival

"B-side is back this September, join us on an unforgettable journey around Portland as we share some of the remarkable art works our commissioned artists have been working on. This year we welcome artists from across the globe and around the corner to respond to our theme of Common Lands. Here's a taster of what to expect: *Kimberlin* is an experimental short film by Duncan Whitley about the discovery of an underground cinema cavern on Portland. Filmed exclusively on Portland and scored with Abul Mogard's dense, layered Farfisa organ tones, *Kimberlin* takes the viewer on a journey imbued with an ambiguous sense of (be)longing and loneliness. It's not just Portland's underground that's inspired our artists this year. Penny Newell presents *Poetry Ledge* - an experiment to bring poetry and climbing together inspired by the world-famous climbing cliffs of Portland. Guided by a qualified climbing instructor, festival visitors will abseil down to a secure platform where they will partake in a vertical one-on-one poetry workshop, producing new writing about their unique and breath-taking experience."

**8 - 11 September:** Various locations on PORTLAND, Dorset. [b-side.org.uk](http://b-side.org.uk).



### SHAKESPEARE'S GLOBE ON TOUR: 'JULIUS CAESAR'

**2 and 3 July**

Sovereign Centre Car Park, Centenary Way, BOSCOMBE, BH1 4SX. Saturday 7.30pm, Sunday 2.30 and 7.30pm. £20 / £7.50. [gotbeaf.co.uk](http://gotbeaf.co.uk). "Bring a chair, grab a blanket and take a trip back to Ancient Rome in this stunning outdoor performance on top of a multi-storey car park!"



### SHAKESPEARE LIVE: 'TWELFTH NIGHT'

**4 - 9 July**

Cleeve House, SEEND, SN12 6PG. Monday - Friday 6.30pm, Saturday 2 and 7.45pm. £22.50 / £5. 07780 938107 / [shakespearelive.com](http://shakespearelive.com). "High quality and hilarious Shakespeare comedy in a beautiful country garden, with reserved tiered seating in a marquee and picnics before the show, from this long-established local company."



# SHERBORNE TIMES

A MONTHLY CELEBRATION OF PEOPLE, PLACE AND PURVEYOR

## OUT NOW AND ONLINE

[sherbornetimes.co.uk](http://sherbornetimes.co.uk)



## Performance

### 'SECRETS OF THE STOUR'

6 - 9 July

Julian's Bridge, Julian's Road,  
WIMBORNE MINSTER, BH21 1EF.  
7.15pm. £10 / £5. 07976 222260 /  
wimbornecommunitytheatre.co.uk.

"Unique participatory outdoor  
performance with drama, music,  
song, dance, puppets and sound  
installations, exploring the  
importance of our rivers to our  
wellbeing and to wildlife."

### 'COASTAL COMEDY'

9 July

Amphitheatre, Lighthouse, 21  
Kingland Road, POOLE, BH15 1UG.  
7.30pm. 01202 280000 /  
lighthousepoole.co.uk. "Three top  
acts on our outdoors stage."

### FRUITCAKE: 'TALES FROM THE PSYCH WARD'

9 July

Bridport Arts Centre, 9 South Street,  
BRIDPORT, DT6 3NR. 7.30pm. 01308  
424204 / bridport-arts.com. "Comic,  
poet and reformed mental health  
nurse Rob Gee presents a user-  
friendly guide to losing the plot."

### 'LET ME ENTERTAIN YOU'

15 and 16 July

Lighthouse, 21 Kingland Road,  
POOLE, BH15 1UG. 7pm. 01202  
280000 / lighthousepoole.co.uk. "An  
epic night of musical theatre,  
singing and dance."

### 'KEEEEP DANCING'

19 July

Lighthouse, 21 Kingland Road,  
POOLE, BH15 1UG. 7.30pm. 01202  
280000 / lighthousepoole.co.uk.  
"New show from the Strictly Come  
Dancing family."

### 'TREASURE ISLAND'

19 - 30 July

Bristol Old Vic Theatre, King Street,  
BRISTOL, BS1 4ED. 2 and 7pm. £10.  
bristololdvic.org.uk. "Escape to  
Treasure Island with Le Navet Bete  
and their swashbuckling, smash-  
hit comedy for all the family!  
Featuring dastardly pirates,  
tropical islands and a mermaid  
you'll never forget, set sail on the  
Jolly Todger with Jim Lad, Long  
John Silver and a whole host of  
other characters for a hilarious  
voyage across the seas."



'TOSCA'

## Opera Brava

Opera comes to Somerset this July with glorious works by Puccini and Rossini. In partnership with Project Factory CIC, Opera Brava, Britain's leading outdoor touring opera company, is bringing *Tosca* and *The Barber of Seville* to the beautiful grounds of The Bishops Palace in Wells.

Wonderful music and stylish performances are promised in relaxed surroundings, with both operas sung in English. If you have never been to an opera before, this is your chance!

Bring the family and friends, spread a rug on the ground or set out your chairs, have a picnic ready for the interval, and enjoy fabulous entertainment for a fraction of the cost of city offerings.

### OPERA BRAVA: 'TOSCA'

**14 July:** The gardens of The Bishop's Palace, WELLS, BA5 2PD. 7.30pm. £35 / £10. 01749 988111 / bishoppalace.org.uk.

### OPERA BRAVA: 'THE BARBER OF SEVILLE'

**15 July:** The gardens of The Bishop's Palace, WELLS, BA5 2PD. 7.30pm. £35 / £10. 01749 988111 / bishoppalace.org.uk.

## Shaftesbury Arts Centre



**The Duke**  
Film  
2 and 19 July



**The Fringe**  
Festival  
22 - 24 July



**Mick Fleetwood  
and Friends**  
Live recording  
31 July



**Ann Louise Richards**  
Exhibition  
10 - 16 August



**Jemima Mitchell  
and Lin Walker**  
Exhibition  
17 - 23 August

11 - 13 Bell Street Shaftesbury, Dorset SP7 8AR [f](#) [i](#) [t](#) 01747 854321 • [shaftesburyartscentre.org.uk](http://shaftesburyartscentre.org.uk)



## SHAFTESBURY FRINGE

**22 - 24 July**

Various locations in SHAFTESBURY, Dorset. [shaftesburyfringe.co.uk](http://shaftesburyfringe.co.uk).

"Music, comedy, dance, theatre and everything in between!"

## LOUISE JORDAN: 'FLORENCE'

**23 July**

Amphitheatre, Lighthouse, 21 Kingland Road, POOLE, BH15 1UG. 12noon and 3pm. 01202 280000 / [lighthousepoole.co.uk](http://lighthousepoole.co.uk). "Louise Jordan's one-woman performance of original folk songs and storytelling explores the myth of Florence Nightingale, shedding light on her life as a campaigner, writer and social reformer."

## 'THE TIDE'

**23 and 24 July**

Amphitheatre, Lighthouse, 21 Kingland Road, POOLE, BH15 1UG. Saturday 1.15 and 4.15pm, Sunday 1 and 3.45pm. 01202 280000 / [lighthousepoole.co.uk](http://lighthousepoole.co.uk). "Talawa Theatre Company explore the narratives and experiences of migration within the UK whilst holding a mirror to an evolving British culture."

## 'STRONG ENOUGH'

**24 July**

Amphitheatre, Lighthouse, 21 Kingland Road, POOLE, BH15 1UG. 12noon and 2.30pm. 01202 280000 / [lighthousepoole.co.uk](http://lighthousepoole.co.uk). "A powerfully optimistic outdoor show that uses circus, comedy and feats of strength to celebrate stories of finding strength in unexpected places."

## DORSET OPERA FESTIVAL

**25 - 30 July**

Coad Theatre, Bryanston School, Bryanston, BLANDFORD FORUM, Dorset, DT11 0PX. 2 and 7pm. £110 / £40. 07570 366186 / [dorsetopera.com](http://dorsetopera.com). "The home of Country House opera in Southwest England welcomes renowned soloists, a full orchestra and chorus. This year's operas are Puccini's gloriously harrowing 'Manon Lescaut' and Mozart's evergreen, 'Magic Flute'."



## Lucky Pigeons: Brainfools

"With a mix of absurd and extravagant theatre, impressive acrobatics, empathetic and funny stories and a pinch of satirical spice and puppetry, a cast of seven will perform daring aerials and acrobatic feats in this soulful story."

**13 August:** Village Hall Grounds, LITTON CHENEY, DT2 9AU. 6pm. £10 / £5. 01308 482514 / [artsreach.co.uk](http://artsreach.co.uk).

**14 August:** Village Hall Grounds, STALBRIDGE, DT10 2NF. 2pm. £10 / £5. 01963 362355 / [artsreach.co.uk](http://artsreach.co.uk).

## THE LAST BAGUETTE THEATRE COMPANY: 'KING ARTHUR'

**26 July**

Millennium Green, BRIDPORT, DT6 3JP. 4.30pm. 01308 424204 / [bridport-arts.com](http://bridport-arts.com). "This fun and farcical adventure is a deliberately anarchic and anachronistic re-telling of the Arthurian Legend, with live music, physical comedy and lo-fi acrobatics. And some silly jokes..."

## 'THE RASCALLY DINER'

**28 July**

First School Field, BROADMAYNE, DT2 8PH. 11.30am. £6 / £5. 07443 659912. "A silly, song-filled, riotous performance that gently explores food provenance, sustainability, and healthy eating."

## 'THE RASCALLY DINER'

**28 July**

Village Hall Grounds, ALDERHOLT, SP6 3RB. 2.30pm. £6 / £5. 07709 933652 / [artsreach.co.uk](http://artsreach.co.uk). See above.

## 'A SUMMER NIGHT AT THE OPERA'

**29 July**

Amphitheatre, Lighthouse, 21 Kingland Road, POOLE, BH15 1UG. 6.30pm. [lighthousepoole.co.uk](http://lighthousepoole.co.uk). "A celebration of opera magic in the company of Mozart, Verdi, Bizet, Puccini, Offenbach, Gilbert and Sullivan, and more."

## 'MYTHS AND MONSTERS'

**30 July**

Amphitheatre, Lighthouse, 21 Kingland Road, POOLE, BH15 1UG. 11am and 2pm. 01202 280000 / [lighthousepoole.co.uk](http://lighthousepoole.co.uk). "Join Squashbox Theatre as they explore the myths and legends of ancient Greece using a quirky and ingenious blend of puppetry, storytelling, live music and comedy."

## 'ALRIGHT?'

**5 August**

Bridport Arts Centre, 9 South Street, BRIDPORT, DT6 3NR. 7.30pm. 01308 424204 / [bridport-arts.com](http://bridport-arts.com).

## 'CHARLIE LOCKE AND THE QUEST FOR CONFIDENCE'

**10 August**

Bridport Arts Centre, 9 South Street, BRIDPORT, DT6 3NR. 7.30pm. 01308 424204 / [bridport-arts.com](http://bridport-arts.com).

"Theatrical experience inspired by situations that children face as they grow through pre-adolescence and into the tween years."



## THE THREE INCH FOOLS: 'TWELFTH NIGHT'

**21 August**

Higher Orchard, SANDFORD ORCAS, DT9 4RP. 7pm. £16 / £8. 01963 220208 / [artsreach.co.uk](http://artsreach.co.uk). "Prepare for an open-air evening of mischief and hilarity as five actors present an inventive take on this rip-roaring comedy, fit for all the family."

**((acoustic))**  
DISTRIBUTION

**We deliver any marketing material**

Call Will on 07397 853006  
[acousticdistribution@btinternet.com](mailto:acousticdistribution@btinternet.com)  
[acousticdistribution.co.uk](http://acousticdistribution.co.uk)

Next issue

**SOMERSET ART WEEKS 2022**

Deadline for advertising and editorial: 31 July

EVOLVER MAGAZINE SUPPLEMENT



Sherborne Art Club & Sherborne *Arts*  
are pleased to announce the return of the

## Sherborne Open Art Exhibition 2022

AT THE DIGBY HALL, HOUND ST, SHERBORNE, DT9 3AA

Sat 23rd - Sun 31st July 10am - 5pm  
(2pm on the 31st)

**FREE ADMISSION**

With thanks  
to our main  
sponsor



MOGERS  
DREWETT

ALL ENTRY DETAILS ARE AVAILABLE AT

**WWW.SHERBORNEARTS.ORG**

Hand in days: Fri 15th July 1pm - 6pm & Sat 16th July 10am - 1pm



Laurence Belbin 'Summer Evening'

# RWA

## 169 Annual Open Exhibition

Be part of the South West's original  
Open Exhibition.

**SUBMISSIONS OPEN 29 JUNE - 11 AUGUST 2022**



Present your work to thousands of art buyers in our  
brand-new galleries & online. Generous cash prizes.

Exhibition dates 8 October - 8 January 2023

rwaopen.co.uk 0117 906 7601

#RWA169 curating@rwa.org.uk

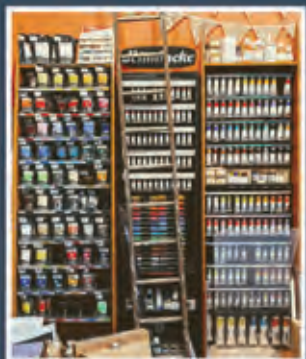
Royal West of England Academy, Queens Road, Clifton, Bristol, BS8 1PX

Image: 168 Annual Open Exhibition, installation view, RWA, 2021. Photo: Alice Hemley.

# ARTCETERA

EST. 1970

## Picture Framing & Artists Materials



01202 423408 artcetera853@gmail.com 853 Christchurch Road BH7 6AR



## PORT REGIS

Motcombe Park  
Shaftesbury  
Dorset SP7 9QA  
portregis.com

Port Regis is a delightful preparatory school for day and  
boarding children aged 2 - 13.

We are seeking to recruit a part-time Ceramics Teacher  
(3 days a week, term time only) who can teach a wide  
range of construction skills to 7 - 13 year olds and has  
knowledge of process from clay preparation to glazing.

The successful candidate can expect:

*To benefit from excellent and spacious  
departmental facilities*

*A competitive salary and benefits package*

*To join an exceptional working environment  
and staff team*

For full details of the roles and application procedure,  
please visit our website [portregis.com](http://portregis.com)  
(key information / staff vacancies)

Early applications encouraged.

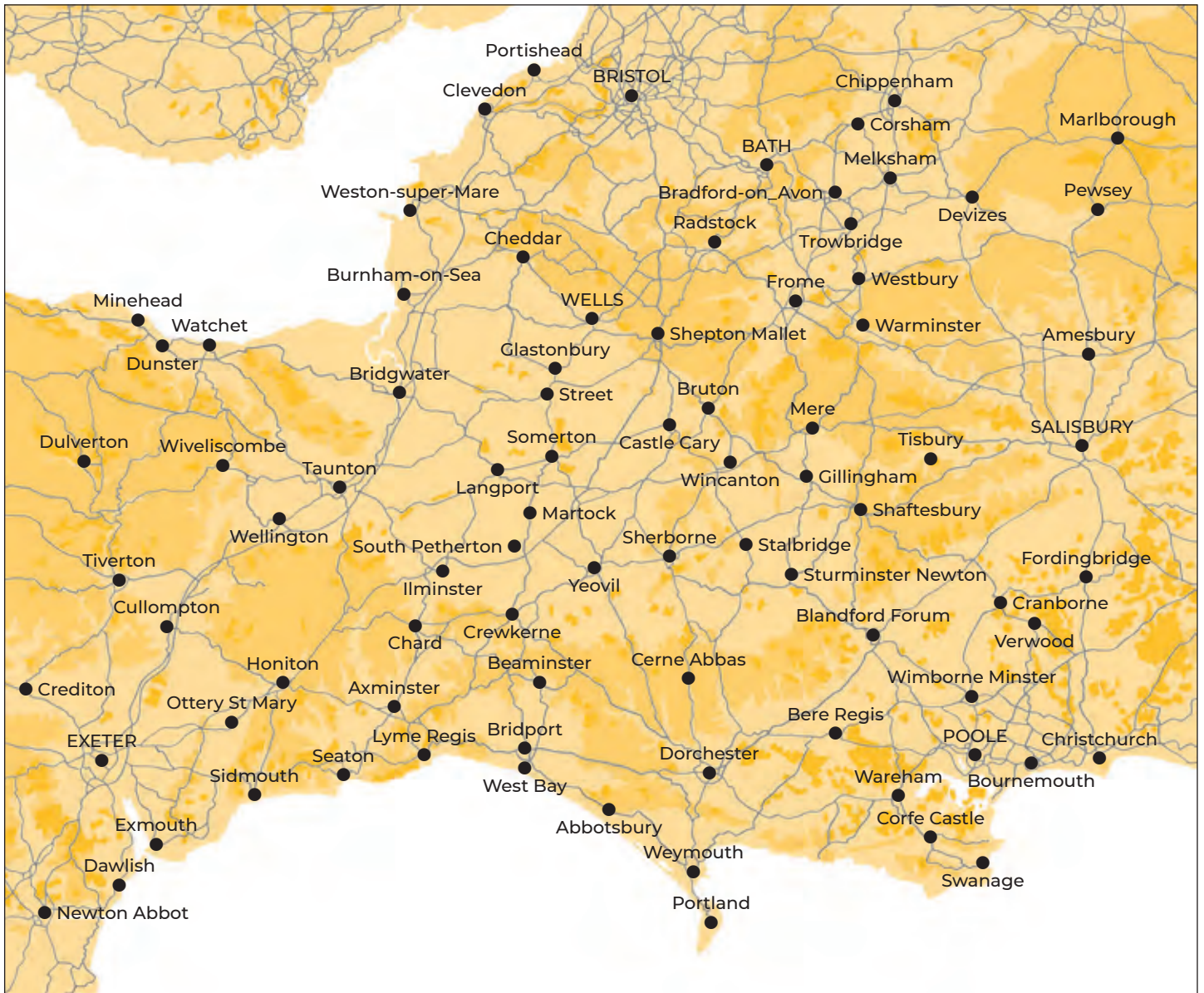
*Port Regis is committed to safeguarding and promoting the welfare of  
children. The successful applicant will be required to undertake an  
Enhanced DBS Disclosure.*

Charity No: 306218



# EVOLVER MAGAZINE

## WESSEX



Follow **EVOLVER** MAGAZINE on Instagram

**evolvermagazine**



### EVOLVER MAGAZINE

THE WESSEX ARTS AND CULTURE GUIDE

Editor SIMON BARBER

Assisted by SUZY RUSHBROOK

Evolver Writer

FIONA ROBINSON [fionarobinson.com](http://fionarobinson.com)

Graphic Design SIMON BARBER

Website AZTEC MEDIA

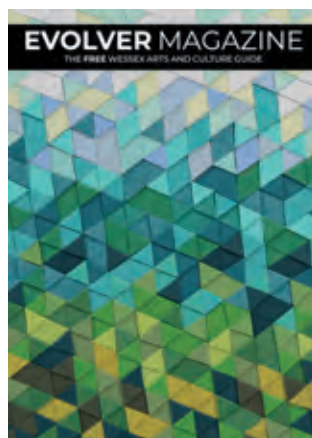
Front Cover NAOMI KENDALL 'SWAY'

Evolver Prize 2022 Winner

### EVOLVER MEDIA

8 BUCKLAND ROAD, PEN MILL TRADING ESTATE,  
YEOVIL, SOMERSET BA21 5EA

Email [simon@evolver.org.uk](mailto:simon@evolver.org.uk)



Telephone 01935 808441

Website [evolver.org.uk](http://evolver.org.uk)

Instagram [evolvermagazine](https://www.instagram.com/evolvermagazine)

Twitter @SimonEvolver

Published by EVOLVER MEDIA LIMITED

Pre-Press by FLAYDEMOUSE  
01935 479453 / [flaydemouse.com](http://flaydemouse.com)

Printed by WARWICK PRINTING  
[warwickprinting.co.uk](http://warwickprinting.co.uk)

Distributed by ACOUSTIC  
07397 853006 / [acousticdistribution.co.uk](http://acousticdistribution.co.uk)

**DEADLINE FOR EVOLVER MAGAZINE 127**

September and October 2022

SUNDAY 7 AUGUST



# Outlets and Sponsors

**EVOLVER MAGAZINE** is available **FREE** at the following Wessex outlets:

ABBOTSBURY: Abbotsbury Studio, Dansel Gallery. AXMINSTER: Archway Bookshop, Axminster Arts Café, Sublyme Café. BATH: Bath Artists' Studios, Beaux Arts, The Bell Inn, The Edge / ICIA, Holburne Museum of Art, Michael Tippett Centre, University of Bath, Victoria Art Gallery. BEAMINSTER: Little Toller Books. BLANDFORD: Blandford Fashion Museum, Bryanston Arts Centre, Forum Café, Forum Framers. BOSCOMBE: Artcetera. BOURNEMOUTH: All Fired Up, Miramar Hotel, Pavilion Dance, Royal Bath Hotel, Russell-Cotes Museum & Art Gallery. BOWER HINTON: The Hollies Hotel. BRADFORD ON AVON: Wiltshire Music Centre. BRIDGWATER: Bridgwater Arts Centre, Clayhill Arts, Engine Room. BRIDPORT: Beach & Barnicott, Bridport Arts Centre, Bridport Old Books, The Bull Hotel, Clocktower Music, Literary and Scientific Institute, Lyric Theatre. BRISTOL: Arnolfini, Bocabar, The Bristol Artisan, Bristol Beacon, Bristol Fine Art, Centrespace, Clifton Fine Art, Create Centre, Folk House, Jamaica Street Artists, Lime Tree Gallery, Bristol Old Vic, PRSC Gallery, RWA, Spike Island, St George's, Tobacco Factory, Trinity Centre, UWE, Watershed. BROADWINDSOR: Redlands Yard. BRUTON: At The Chapel, Hauser and Wirth. BUDLEIGH SALTERTON: Brook Gallery. BURNHAM ON SEA: Princess Theatre & Arts Centre, Seabreeze Gallery. CASTLE CARY: Bailey Hill Bookshop, David Simon Gallery, Trowbridge Gallery. CHARD: Art Café, Barleymow's, Hornsbury Mill Hotel. CHARLTON: Glebe Gallery. CHARMINSTER: Flux Art Supplies. CHEDDAR: Cheddar Art School, Sketch Café. CHEDDON FITZPAINE: Hestercombe Gallery. CHESIL BEACH: Fine Foundation Centre. CHIPPENHAM: Chippenham Museum. CHRISTCHURCH: Hatch Gallery, Hayloft Gallery, Red House Museum, Regent Centre. CLEVEDON: Fizz Gallery, Studio 3. CORFE CASTLE: Boilerhouse Gallery, Gallery 41, Morton House Hotel, Village Stores. CORSHAM: Pound Arts. CREWKERNE: Art4All / ArtyCrafty. CROCKERTON: Bull Mill Arts. CROWCOMBE: Halsway Manor. CULLOMPTON: Cullompton Community College. CULMSTOCK: The Strand Stores. DEVIZES: Wiltshire Museum. DORCHESTER: Dorchester Arts, Duke's, Frank Herring & Sons, Gallery on The Square, The Little Keep, Vinyl Van. EAST LAMBROOK: East Lambrook Manor Gardens. EXETER: Academy of Music, Barnfield Theatre, The Cavern, Corn Exchange, Exeter School of Art, Glorious Art Cafe, Phoenix Arts Centre, Royal Albert Memorial Museum, Southgate Gallery. FROME: Bat Print Studio,

Black Swan Arts, Cheese and Grain, Fiat Lux, Merlin Theatre, Mount, Raves From The Grave, Rook Lane Arts, Rise Centre, Whittox Gallery. GILLINGHAM: The Idea Works, Slade Centre. GLASTONBURY: Abbey Muse Gallery, Bocabar, Facets Of Avalon, Glastonbury Galleries, Heart Of The Tribe Gallery, Red Brick Building, Rural Life Museum. HEMYOCK: Healthy Living Centre. HESTERCOMBE: Hestercombe Gallery. HIGHCLIFFE: In The Frame. HOLTON HEATH: Holton Lee. HONITON: The Beehive, Boston Tea Party, Hybrid Gallery, School Of Art And Wellbeing, Strummer Pink, Thelma Hulbert Gallery. ILMINSTER: Courtyard Gallery Cafe, Dillington House, Ilminster Arts Centre. KEYNSHAM: Chocolate Quarter. LANGPORT: 4 Every Cloud, Art Tea Zen, Hanging Gallery, Shakspeare Glass. LYME REGIS: Blue Lias, Coombe Street Gallery, Fine Art Framing, Marine Theatre, Studio 19. LYTCHETT MINSTER: Barn Cafe, Courtyard Craft Centre. MARLBOROUGH: Framemakers, Rabley Contemporary Drawing Centre. MARTOCK: Martock Gallery Yandles Cafe. MILTON ABBAS: Dorset Crafty Barn, Luccombe Hub. MINEHEAD: Courtyard Framing, Leo Davey Gallery, Regal Theatre. MORCOMBELAKE: Artwave West. MUCHELNEY: John Leach Gallery. NEW MILTON: Forest Arts. NEWTOWN: R. C Arts. NORTH CURRY: Community Café. OTTERTON: Otterton Mill. PENN HILL: Josephine Wall Shop. PEWSEY: McNeill Gallery. POOLE: Arts University Bournemouth, Boiler Room Records, Bournemouth University Atrium Gallery, Guildhall Gallery, Lighthouse, Gallery Upstairs, Originals, Poole Museum, Poole Violins, Towngate Gallery And Framing. PORLOCK: Churchgate Gallery, Melody Art. PORTLAND: B-Side Outpost, White Stones. POUNDBURY: Gallery On The Square, Store 6. SALISBURY: City Hall, Fisherton Mill, Framemakers, Noble Art Supplies, Salisbury Arts Centre, Salisbury Museum, Salisbury Playhouse, Studio 53, Wiltshire Gallery, Young Gallery. SEATON: Arts Café, Savooni Art Gallery. SEAVINGTON: Village Shop. SHAFTESBURY: The Cygnet, Grosvenor Hotel, Pictureframes, Shaftesbury Arts Centre. SHEPTON MALLET: One Craft Gallery. SHERBORNE: Artslink, Elementum Gallery, New Digby Hall, Old Barn Framing Gallery, Winstone's. SIDMOUTH: East Devon Art Academy, Flo and Us, Kennaway House, Winstone's. SOMERTON: ACE Arts, Gifted Company & Gallery Coffee Shop. SOUTH CADBURY: Chapel Cross Tea Rooms. SOUTH PETHERTON: David Hall. STALBRIDGE: Dike & Sons. STOBOROUGH: Furzebrook Studios. STOKE ST GREGORY: Willow & Wetlands Centre. STOURHEAD: First View Gallery. STREET: Millfield

School Atkinson Gallery, Strode Theatre. STURMINSTER NEWTON: The Exchange, Poet's Corner, Wessex Photographic. SWANAGE: 4Matt Framers and Gallery, Durlston Castle, Hollinghead Studio Gallery, L'Artishe Gallery, Mowlem Theatre, Mulberry Bush Gallery, Purbeck New Wave Gallery, Quarr Gallery, Sansom Gallery. SYMONDSBURY: Sou'-Sou'-West. TAUNTON: Brewhouse Theatre, CIC CIC, Fine Art And Framing, Jane Amour, Mount Somerset Hotel, Quantock Art And Framing, Queen's College, Tacchi-Morris Arts Centre, University Centre Somerset. TINCLETON: Tincleton Gallery. TISBURY: Messums Wiltshire. TIVERTON: Lantic Gallery. TROWBRIDGE: Arc Theatre, Court Street Gallery, Drawing Projects, The Lamb, Trowbridge Arts, Trowbridge Museum. VERWOOD: Campbell & Rose Gallery, The Hub. WAREHAM: Creative Gallery, Priory Hotel, Rex Cinema. WATCHET: East Quay, Watchet Gallery. WELLINGTON: Old Brick Workshop. WELLS: A2 Gallery, Andelli Art, Bishop's Eye, Good Earth, Heritage Courtyard Studios, Somerset Guild of Craftsmen Gallery and Shop. WEST BAY: Sladers Yard. WEST COKER: Lanes, Old School Room. WESTHAY: Somerset Crafts. WESTON-SUPER-MARE: Frame Station, Playhouse, Weston College. WEYMOUTH: Weymouth College, Weymouth Pavilion. WILLITON: Breeze Art Gallery. WIMBORNE: Allendale House, Square Records, Walford Mill Craft Centre. WINSCOMBE: Sidcot Arts Studio. WIVELISCOMBE: Community Office. WOODBURY: Woodbury Studio Gallery. WORTH MATRAVERS: Burngate Stone Centre. WRINGTON: Barleywood Studios. YEOVIL: Octagon Theatre, Yeovil Art Space. YETMINSTER: Old School Gallery.

Plus selected TOURIST INFORMATION CENTRES and LIBRARIES throughout Wessex

## EVOLVER SPONSORS

ACE Arts  
Acoustic Distribution  
Artcetera  
Aztec Media  
B-Side  
Black Swan Arts  
Boilerhouse Gallery  
Bridport Arts Centre  
The Creative Gallery  
Dorset Visual Arts  
East Quay  
Fisherton Mill  
Gallery on the Square  
Heart of the Tribe Gallery  
Lyme Bay Arts  
Project Factory  
Shaftesbury Arts Centre  
The Slade Centre  
Sladers Yard  
Somerset Art Works  
Tincleton Gallery  
The Vanner Gallery  
Wiltshire Creative

