

EVOLVER MAGAZINE

THE **FREE** WESSEX ARTS AND CULTURE GUIDE



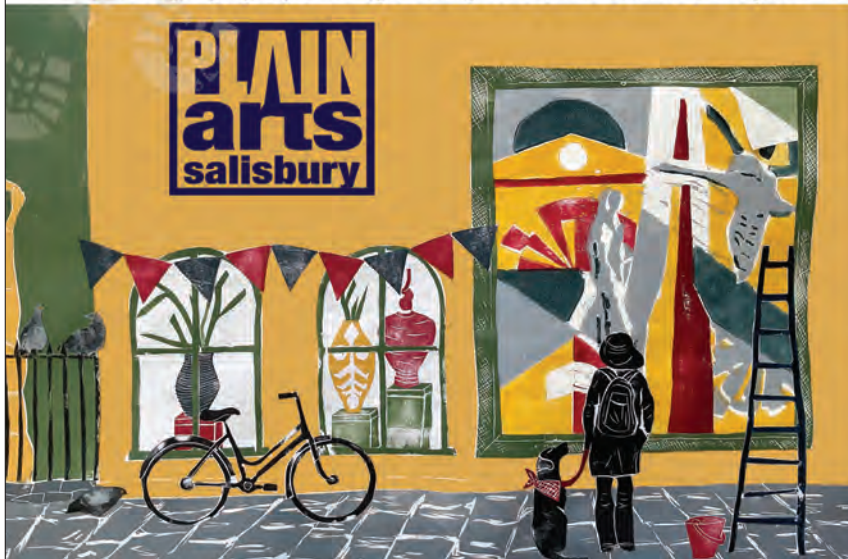


GOOGLE MAP
SCAN ME

THE ART TRAIL IS BACK!

3rd - 18th September 2022

photography | painting | sculpture | mixed media | jewellery | ceramics & everything in between!



Over 70 different artists
will be taking part in &
around Salisbury

Grab your copy of the Catalogue
& follow the trail.

Brought to you by
Plain Arts Salisbury



Email: info@plainartssalisbury.co.uk
Web: www.plainartssalisbury.co.uk

ENGLISH TOURING OPERA

Opera that *moves*

FRI 14 – SAT 15 OCTOBER

HANDEL

AUTUMN 2022

OTTONE ♦ TAMERLANO

English Touring Opera return to Poole with a
celebration of the work of the greatest composer
of opera in the UK, George Friderich Handel.

lighthouse
Arts & Entertainment | Poole

| Different every day

EVOLVER MAGAZINE 127

September and October 2022



Exhibit A

Fiona Robinson: Waltzing with Chopin #4

Ink and mixed media on paper, 67 x 101.5 cm

ARTIST'S STATEMENT: "Since Spring 2020 time has truncated. Then, we were living in limbo, waiting: senses stretched to breaking point, acutely aware of the boundaries between inside and outside. Birdsong became a cacophonous element of the new silence. The dropping notes encapsulated freedom. The idea of John Cage's work 4'33 where the 'music' was the 'silence' of the concert hall seemed deeply relevant. Alongside 'drawing' birdsong I made joyous responses to Chopin's waltzes, and revisited the mellifluous economy and intimacy of Gregorian Chant. My memory of the notation of Plainsong – dots scattered across four lines – seemed a logical progression of my use of the marks and piercings of Pianola rolls."

'DRAWING TO MUSIC'

10 September - 1 October: The Art Stable, CHILD OKEFORD, DT11 8HB. Thursday - Saturday 10am - 3pm.
07816 837905 / theartstable.co.uk.



FISHERTON MILL

voted
BEST ART SPACE IN WILTSHIRE

SALISBURY

GALLERY

CAFE

STUDIOS



108 Fisherton Street, Salisbury, SP2 7QY

Monday - Friday 10am-5pm • Saturday 9.30am-5.30pm

[WWW.FISHERTONMILL.CO.UK](https://www.fishertonmill.co.uk)



Visual Arts

September and October 2022

JENNY GRAHAM: 'LAND OF THE SUMMER PEOPLE'

Until 4 September

The Whittox Gallery, Whittox Lane, FROME, BA11 3BY. Tuesday - Saturday 9am - 4pm. 07712 523734.

DOT WOOD: 'LANDSCAPES, SEASCAPES, HEDGEROWS'

Until 4 September

Sou'-Sou'-West Arts Gallery, Symonds Estate, BRIDPORT, DT6 6HG. 10.30am - 4.30pm. 01308 301326 / sousouwest.co.uk.

RAVI BUTALIA: 'PAPERWORKS'

Until 6 September

The Gallery, Shaftesbury Arts Centre, Bell Street, SHAFTESBURY, SP7 8AR. Monday - Saturday 10am - 4pm. shaftesburyartscentre.org.uk.



'A CELEBRATION OF SKY'

Until 10 September

Ace Arts, Market Place, SOMERTON, TA11 7NB. Tuesday - Saturday 10am - 5pm. 01458 273008 / acearts.co.uk. "Lino prints by Steve Manning."

'A DINNER-GONG IN THE JUNGLE'

Until 10 September

The Shippon Gallery, Hook Farm, Chardstock, AXMINSTER, EX13 7DD. Saturday and Sunday 11am - 4pm. theshippongalleries.com. "Andrew Lanyon shows paintings featuring characters associated with St Ives and hollow books containing dramatic surprises. Dave King continues to explore his back catalogue alongside new works."

ALEX LOWERY: 'PICTURING'

Until 11 September

Sladers Yard, WEST BAY, Bridport, DT6 4EL. Wednesday - Sunday 10am - 4.30pm. 01308 459511. "Recent paintings and drawings."



EMILY REEMAN

Salisbury Art Trail

"Back after a pandemic-enforced break, this year's Salisbury Art Trail is better than ever, with new artists taking part, new venues, and an interactive Google map to plan your route. Discover creative Salisbury in fabulous retail and hospitality venues and in artists' own studios and homes. Find exhibitions in unexpected and intriguing locations across the city and beyond. Just look out for the yellow signs! With something to suit most budgets, supporting your local artists couldn't be easier. Examples of work from all the artists taking part in the Art Trail are showcased at the Trailblazers exhibition in Salisbury Library and this also offers an ideal place to start your route."

3 - 18 September: Locations in and around SALISBURY. 07928 303576 / plainartssalisbury.co.uk.

AKIKO HIRAI: 'IN A MANNER OF SPEAKING'

Until 11 September

Sladers Yard, WEST BAY, Bridport, DT6 4EL. Wednesday - Sunday 10am - 4.30pm. 01308 459511 / sladersyard.co.uk. Ceramics.

PENNIE ELFICK: 'TALKING TO MYSELF'

Until 11 September

Brewhouse, Coal Orchard, TAUNTON, TA1 1JL. 10am - 4pm. tauntonbrewhouse.co.uk. "Pennie explores arrangements of horizontal and vertical bands in a range of muted colours using acrylic and oil paints."

'EARTH: DIGGING DEEP IN BRITISH ART 1781 - 2022'

Until 11 September

Royal West of England Academy, Queen's Road, Clifton, BRISTOL, BS8 1PX. Tuesday - Saturday 10am - 5pm. £8.90. rwa.org.uk. "This exhibition goes deep beneath the earth, exposing the core materiality of its elements."

BLACK SWAN ARTS OPEN

Until 11 September

Black Swan Arts, 2 Bridge Street, FROME, BA11 1BB. Monday - Sunday 10am - 4pm. 01373 473980. "Over 100 artworks from established art practitioners through to avant-garde young graduates in a variety of mediums."

DRAYCOTT ART CLUB

Until 17 September

Wells & Mendip Museum, Cathedral Green, WELLS, BA5 2UE. Tuesday - Saturday 10am - 4pm. 01749 673477.

ROBERT MACFARLANE AND JACKIE MORRIS: 'THE LOST WORDS'

Until 18 September

Russell-Cotes Art Gallery and Museum, East Cliff, BOURNEMOUTH, BH1 3AA. Tuesday - Sunday 10am - 5pm. £7.50 / £4. russellcotes.com. "Enchanting exhibition featuring 20 acrostic spell poems and 50 beautiful original watercolour paintings."

MARTYN BREWSTER
Coast Lines: recent paintings

PETER HAYES ceramic sculpture

PETTER SOUTHALL furniture

17 September - 13 November

ALEX LOWERY Picturing: recent paintings

AKIKO HIRAI ceramics until 11 September

SLADERS YARD
Contemporary Art, Furniture & Craft Gallery
West Bay Bridport Dorset DT6 4EL t: 01308 459511 w: sladersyard.co.uk
Open Weds - Sat 10am-4.30pm @sladersyard e: gallery@sladersyard.co.uk
CAFÉ SLADERS seafood restaurant also open Sundays 10am - 4pm

Visual Arts

DAVID HOCKNEY: 'LOVE LIFE'

Until 18 September

Holburne Museum, Great Pulteney Street, BATH, BA2 4DB. Monday - Saturday 10am - 5pm, Sunday and Bank Holidays 11am - 5pm. £12.50. 01225 388588 / holburne.org.

"Hockney's delight in the world is no better demonstrated than in the drawings he made in the late 1960s and 1970s. With over 40 of Hockney's drawings on loan from private collections, Love Life is a wonderful way to enjoy his artistry."



SSW SUMMER OPEN: 'UNRESTRICTED'

Until 18 September

Sou'-Sou'-West Arts Gallery, Symondsbur Estate, BRIDPORT, DT6 6HG. 10.30am - 4.30pm. 01308 301326 / sousouwest.co.uk. *"The gallery offers a 'no limits' approach to their annual summer open this year - artists are encouraged to defy conventions - with no holds barred!"*

Above: Phil Clayton 'Unrestricted'

'SPECTRA'

Until 24 September

Fisherton Mill, 108 Fisherton Street, SALISBURY, SP2 7QY. Monday - Friday 10am - 5pm. 07928 303576 / fishertonmill.co.uk. *"With a massive splash of colour and character, six artists depict urban streets through to nature, landscapes, and more, using various mediums."*



Laura Ford: Reveal and Conceal

"This new exhibition showcasing current and existing works by Welsh artist Laura Ford will feature a reconvening of characters from the past two decades as well as new work that she has created for this show. In Gallery One, Laura will present an installation of reconfigured personalities, a collection of humanlike creatures, comical yet unsettling, appealing yet disturbing, each relatable in their own way. Laura's work is subversive, it taps into our basic human emotions where her creations can at once make us feel sentimental yet disturbed. We are confronted with a pink knitted poodle, a frog facing the wall, a cat in a tweed cape and bonnet, and a child dressed as a bird in wellingtons, each displayed as if on procession or posing as if they are taking part in a large group photo. On first impression, Laura's work is easy to connect with and appears playful, but gives way to a more sinister tone; one of pain and helplessness - a collection of creatures from a dystopian world vying for our attention. However, despite their differences and varied expressions, the work in this exhibition highlights togetherness, a group of mismatched characters, different but also complimentary. In Gallery Two, Laura has created a series of human-sized cats, apparently chasing their tails, alongside a series of works on paper - also featuring cats, each drifting in the water, immersed in an environment to which they are not accustomed. These works reflect our nature to anthropomorphise, to project our emotions onto creatures and the non-human form. Also, perhaps, the work comments on our current state, a society emerging from a pandemic, surfacing in a world that is altogether different, unknown, a new normal full of rules and conventions where we are fighting to keep our heads above the water."

10 September - 2 January: East Quay, WATCHET, TA23 0AQ. 10am - 6pm. 01984 263103 / eastquaywatchet.co.uk.



Vintage racing car by Richard Jeffrey

BOILERHOUSE GALLERY

EXHIBITING A WONDERFUL VARIETY
OF CONTEMPORARY ART AND CRAFT
IN A UNIQUE SETTING

Sandy Hill Arts, Sandy Hill Lane,
Corfe Castle, Dorset BH20 5JF

07398 052489

boilerhousegallery.co.uk



Nurture by Trez Moretti

ColourWorks

The Town Mill, Lyme Regis - the opportunity for four Bridport based friends with individual talents to showcase their collective creativity.



Sue Barnes Chris Neaves Sarah Rose Steve Rose

11-17 November 2022

Malthouse Gallery



Wendy Hermelin

Textiles

10 September – 8 October



The Slade Centre, The Square, Gillingham, Dorset SP8 4AY

Tuesday - Friday 9am - 4pm, Saturday 9am - 2pm

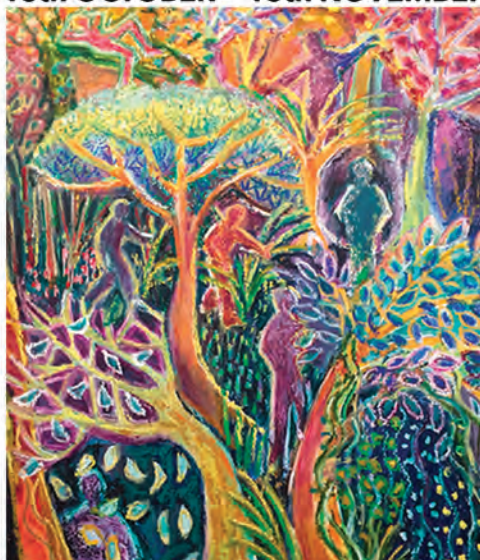
07775 431652 · sladecentre.com

A CABINET OF CURIOSITIES FRANK HARWOOD & JIM PILSTON 25th AUGUST - 20th SEPTEMBER



Boy with Monkey & Painted Vase with Dandelions
by Frank Harwood
Herne & Sun Tile
by Jim Pilston

THE ARRANGEMENT OF COLOUR SARA TRENCHARD 13th OCTOBER - 13th NOVEMBER



Lost in the Forest
by Sara Trenchard

SCAN CODE FOR
MORE EVENTS INFO



SOMERSET ART WEEKS FESTIVAL 2022

24th SEPTEMBER -
9th OCTOBER

For this year's Somerset Art Weeks Festival, the entire gallery space will be transformed into a dynamic and exciting open studio.

The open studio will feature nine of our Core Artists throughout the festival.



GALLERY OPEN DAILY 11.00 - 17.00
(CLOSED WEDNESDAYS)



HEART OF
THE TRIBE
ART GALLERY

01458 832167
Gallery@HeartofTheTribe.com
www.HeartofTheTribe.com
f @HeartofTheTribeGallery
74 High Street, Glastonbury, BA6 9DZ

WINTER OPEN EXHIBITION 2022

Apply online for your chance to exhibit.
Visit the website for more information.

Entries close 16th October 2022

CALL FOR ENTRIES

ART | ENERGY | COMMUNITY

Visual Arts

'INSECT ODYSSEY'

Until 25 September

Salisbury Museum, The Kings House, 65 The Close, SALISBURY, SP1 2EN, 10am - 5pm. 01722 332151. *"An insight into the insect world through the visual responses of contemporary artists."*

SUMMER EXHIBITION

Until 27 September

Gallery On The Square, Queen Mother Square, DORCHESTER, DT1 3BL. Monday - Saturday 9.30am - 5pm, Sunday 11am - 4pm. 01305 213322. *"Featured artists include John Boyd, Sarah Ross-Thompson, Colin Willey, and Debra Sweeney."*

CAZ SCOTT

Until 30 September

Museum of Jurassic Marine Life, KIMMERIDGE, BH20 5EP. 10am - 5pm. 01929 270000 / cazscott.art.

'FOREST: WAKE THIS GROUND'

Until 2 October

Arnolfini, 16 Narrow Quay, BRISTOL, BS1 4QA. 11am - 6pm. 0117 917 2300 / arnolfini.org.uk. *"Major group exhibition including artists, writers, filmmakers, and composers, from across the globe."*

'UNDER THE CEDAR TREE'

Until 4 October

Athelhampton House & Gardens, ATHELHAMPTON, Dorchester, DT2 7LG. 10am - 5pm. £16 / £15 / £13. 01305 848363. *"Abstract paintings inspired by the history and gardens of Athelhampton, evoking the atmosphere of this stately home and its links to Thomas Hardy in a contemporary style."*

ROBIN TANNER: 'FROM GOLDSMITHS TO THE GREAT DEPRESSION'

Until 8 October

Chippenham Museum, 9 - 10 Market Place, CHIPPENHAM, SN15 3HF. Monday - Saturday 10am - 4pm. chippenham.gov.uk. *"This exhibition will explore the life and work of Robin Tanner during the formative years of the 1920s and 30s. At the heart of the exhibition will be several works that help us understand Tanner's blossoming interest in etching, wedded to his love of the English countryside."*



MARTYN BREWSTER 'ALONG THE COAST 4'

Coast Lines

"This autumn Martyn Brewster fills the galleries of Sladers Yard with his richly coloured lyrical paintings, drawings and prints of the Dorset coast, alongside the timeless weathered and coloured ceramic sculpture of Peter Hayes."

17 September - 12 November: Sladers Yard, West Bay Road, WEST BAY, Bridport, DT6 4EL. Wednesday - Saturday 10am - 4.30pm. 01308 459511 / sladersyard.co.uk.

'COLLECTING THE WORLD'

Until 16 October

Russell-Cotes Art Gallery & Museum, East Cliff Promenade, BOURNEMOUTH, BH1 3AA. £7.50 / £4. 01202 128000 / russellcotes.com / quaycrafts.co.uk. *"Contemporary art and craft responses to the home and collections of Merton and Annie Russell-Cotes by Quay Crafts, an Isle of Wight based group of professional artists and makers."*

AUB POSTGRADUATE SUMMER SHOW 2022

Until 28 October

Lighthouse, 21 Kingland Road, POOLE, BH15 1UG. Tuesday - Saturday 10am - 9pm. 01202 280000 / lighthousepoole.co.uk.

'MYTHS AND MONSTERS'

Until 29 October

Museum of Somerset, Castle Lodge, Castle Green, TAUNTON, TA1 4AA. Tuesday - Saturday 10am - 5pm. swheritage.org.uk.

INGRID POLLARD: 'THREE DROPS OF BLOOD'

Until 29 October

Thelma Hulbert Gallery, Dowell Street, HONITON, EX14 1LX. Wednesday - Saturday 10am - 5pm. 01404 45006 / thelmahulbert.com.

'TEXTURES OF DORSET'

1 - 4 September

Eype Centre for the Arts, Mount Lane, EYPE, Bridport, DT6 6AR. Thursday - Saturday 10am - 5pm, Sunday 10am - 4.30pm. 07711 460372. *"Card and felt work by Jenny Penney and Di Pattinson."*

MARK CODLING

1 - 30 September

The Creative Gallery, St John's Hill, WAREHAM, BH20 4NB. Monday - Saturday 10am - 5pm. 01929 551505 / creativegallerywareham.co.uk. *"Native greenwoods transformed for domestic use."*

'SUMMER SPLASH'

1 - 30 September

Flaunt It Gallery, 1 Fore Street, SIDMOUTH, EX10 8AQ. Monday - Friday 10am - 4pm. 01395 577363 / alisonsummerfield.com. *Paintings by Simeon Stafford, Jenny Pymont, Rod Ashman, and Alison Summerfield.*



DAVID BROOKE: 'MYSTERIOUS ADVENTURES'

5 - 18 September

Sou'-Sou'-West Arts Gallery, Symonds Estate, BRIDPORT, DT6 6HG. 10.30am - 4.30pm. 01308 301326. *"There clearly is a narrative in David Brooke's paintings, but it is left to the viewer to decide the nature of that narrative."*
Above 'The Educated Landscape'

BREATHE

Jane Sheppard + Robert Woolner

9 Sep - 29 Oct

45 High Street | Salisbury | SP1 2PB
10am - 5pm Tuesday to Saturday
01722 501 551
vannergallery.com
@thevannergallery





'WINTER WOODLAND' (Mixed media, 40 x 30 cm, 2021)

John Austin-Williams

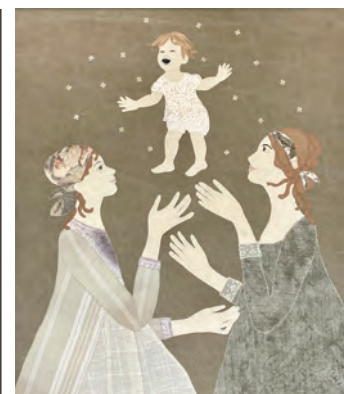
John Austin-Williams returns to the Bettles Gallery in Ringwood for a show in September. John's work continues to be landscape based but he says that his most recent work reflects his thoughts on the recent very hot summer together with his feelings about the appalling events in Ukraine. The experience of lockdown in 2020 curtailed his travels but since then he has travelled to Norway and north of the Arctic Circle and closer to home to Falmouth in Cornwall.

The works on show are mostly paintings, but the gallery has also included five monochrome ink-drawings. The Cornish works, unusually still-lives, as well as landscapes have a brighter palette, a deliberate attempt to make some 'more cheerful' work when all around the world seemed to be falling apart.

Austin-Williams' work in mixed media using watercolour and pastel are as much about drawing as they are painting. His expressive charcoal line and drawn marks derive from his initial sketchbook studies but as the painting develops it takes on a life of its own reflecting an emotional response to his subject. For Austin-Williams the work is 'all about surface, texture, colour and design - the paintings are about themselves and not really about anything else'.

Fiona Robinson

10 - 24 September: Bettles Gallery, 80 Christchurch Road, RINGWOOD, BH24 1DR. Wednesday - Saturday 10.30am - 4pm. 01425 489350 / bettles.net.



MICK LINDBERG: 'AWAKENING A DREAM'

5 - 30 September

David Simon Contemporary, 37 High Street, CASTLE CARY, BA7 7AW. Monday - Saturday 10am - 5.30pm (Closed Wednesdays). davidsimoncontemporary.com.

Above: 'Bouncing to Beethoven' (Linen, 85 x 70 cm)

'THE LIVING TREE'

6 - 10 September

Bridport Arts Centre, 9 South Street, BRIDPORT, DT6 3NR. Tuesday - Saturday 10am - 4pm. 01308 424204 / bridport-arts.com.

'IN OUR HANDS'

6 September - 23 October

Rotunda Gallery, Lyme Regis Museum, Bridge Street, LYME REGIS, DT7 3QA. Tuesday - Saturday 10am - 5pm, Sunday 10am - 4pm. lymeregismuseum.co.uk. *Paintings by Caroline Ireland.*

THE WESSEX PAINTERS

7 - 13 September

The Gallery, Shaftesbury Arts Centre, Bell Street, SHAFTESBURY, SP7 8AR. Monday - Saturday 10am - 4pm. shaftesburyartscentre.org.uk.

'ARTBEAT'

7 - 16 September

Kennaway House, Coburg Road, SIDMOUTH, EX10 8NG. 10am - 5pm. kennawayhouse.org.uk.

LES MATTHEWS

7 September - 9 November

Studio 3 Gallery, Clevedon Craft Centre, Moor Lane, CLEVEDON, BS21 6TD. 11am - 4pm. 07557 331967 / studiothree.art.



BETTLES GALLERY RINGWOOD

Exhibition of Paintings by
JOHN AUSTIN-WILLIAMS
and Ceramics by
CHRIS CARTER

10-24 September 2022

Open Wed-Sat 10.30-4.00pm
80 Christchurch Rd, Ringwood BH24 1DR

Tel: 01425 489350
email: gill@bettles.net | www.bettles.net



EAST
QUAY

- Follow us
@eastquaywatchet



REVEAL AND CONCEAL

Laura Ford

10.09.2022 - 02.01.2023

Opening Party: 10.09.2022 from 6pm

For more information visit:
eastquaywatchet.co.uk



Supported using public funding by
ARTS COUNCIL
ENGLAND

'ALL RISE'

A FUNDRAISING EXHIBITION

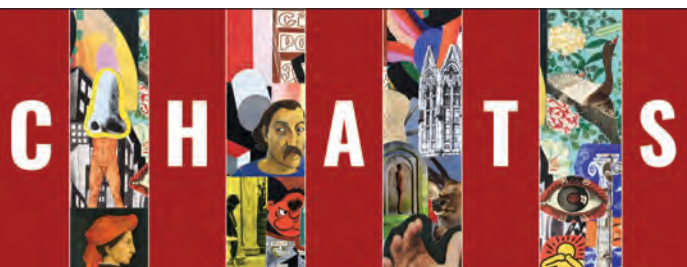
Anna Gardiner
Winterised

13 – 17 September

A special exhibition of works donated by the artists
that support ACE Arts and our charitable aims
Opening event Monday 12 September, 6 - 8pm, all welcome



Market Place, Somerton, Somerset TA11 7NB
Tuesday - Saturday 10am - 5pm • 01458 273008 • acearts.co.uk



Cedars Hall Arts Talks Series

W E L L S

Patron: Tim Marlow OBE

Inspired by Antony Gormley's sculpture DOUBT, on loan to Wells Cathedral until March 2023, these monthly talks about the arts take place at 7pm in Cedars Hall, Wells Cathedral School. Young musicians from Wells will perform in the auditorium before each talk. Conversations will continue after the talk, join us for a glass of wine and supper. Booking essential.



15.09.22 Rachel Campbell-Johnston, biographer and former chief art critic of The Times, explores the formative influence of William Blake on the young Samuel Palmer in her book, *Visions of Albion*.

11.11.22 Jo Baring, writer and Director of the Ingram Collection, in conversation with artist and sculptor, Olivia Bax. They will discuss Jo's new book, *Revisiting Modern British Art*, the influence and enduring impact of art made in 20th century Britain and consider the legacy of artists such as Sir Anthony Caro on Bax's own sculptural practice. Book signing after the talk.



08.12.22 Hettie Judah, chief art critic of *The i* newspaper and writer, will talk to Gemma Brace, writer and Exhibitions Producer at the Arnolfini, about Hettie's two very different books, published this Autumn: *Lapidarium - The Secret Lives of Stones* and *How Not to Exclude Artist Mothers (and Other Parents)*. Book signing after the talk.

Photo: Alex Schneideman



CHATS will be livestreamed

Tickets are available online at cedarshall.co.uk
or through the box office: **01749 834483**
£10 per ticket, £20 with supper, under 19s free

CHATS is kindly supported by
Terence Mordaunt and the Blair Foundation

CHEW VALLEY Arts Trail

Saturday 8th and Sunday 9th
October 2022

10am to 6pm

Visit our open studios and venues set around the famous Chew Valley and Blagdon Lakes. In villages between the A37 and the A38, not far from Bristol Airport, Bristol, Bath or Wells.

Browse or buy at your leisure. Have fun! Brochures with trail map widely available.



chewvalleyartstrail.co.uk • 01275 333128

GALLERY ON THE SQUARE

1 October to 6 November



The Holiday Cottage: oil on linen

BRIDGET SYMS
New paintings and prints

Queen Mother Square, Poundbury, Dorchester DT1 3BL

Open daily, 9.30am to 5pm; Sundays 10am to 3pm

www.gallerypoundbury.co.uk

**Wessex
Museums**

28 MAY – 30 OCT 2022

HARDY'S WESSEX

The landscapes that inspired a writer

DORSET MUSEUM

SALISBURY MUSEUM

POOLE MUSEUM

WILTSHIRE MUSEUM

A major exhibition across four museums

The largest collection of Thomas Hardy objects ever displayed at one time. Star loans from national collections, including Hardy's handwritten manuscripts.

wessexmuseums.org.uk/HardysWessex

Tess of the D'Urbervilles
Manuscript © British
Library Board.



Supported using public funding by
**ARTS COUNCIL
ENGLAND**

Art Fund



Battens
SOLICITORS



Made possible with
**Heritage
Fund**

Visual Arts

'CLOUDED BORDER'

8 - 25 September

The Belvedere, Durlston Castle, Durlston Country Park, Lighthouse Road, SWANAGE, BH19 2JL. 10.30am - 5pm. 07972 506367. "Pop-up art installation and live event by Megan Calver and Gabrielle Hoad."



CARRIE MASON: 'BEING IN TIME'

9 September - 19 October

Mowlem Theatre, Shore Road, SWANAGE, BH19 1DD. Monday - Saturday 11am - 1.30pm and 6 - 10.30pm. 01929 422239.



MIXED AUTUMN EXHIBITION

9 September - 6 January

Tincton Gallery, The Old School House, TINCLETON, near Dorchester, DT2 8QR. Friday - Monday 10am - 4pm. 01305 848909 / tinctongallery.com. "An exhibition featuring all our gallery artists, including sculptors Johannes von Stumm and Sarah Moore, ceramicist Alison Wear, and many paintings and prints from Phillippa Headley, Kim Pragnell, Colin Moore, and Ruth Ander (above)."



Breathe

"This exhibition is subtitled 'Calm and contemplation in ceramic and paint'. It reflects both artists' pursuit of peace and stillness in their work. Jane Sheppard's smoke-fired vessels and Robert Woolner's textural abstract paintings invite viewers to pause, slow down and reflect. Jane was subject leader for Ceramics at Bath College for 14 years. Her parallel career as a practising ceramicist began in the early 1990s, exhibiting nationally and internationally and gaining a development award from South West Arts. Robert trained at Camberwell School of Art, where his teachers included Frank Auerbach and Euan Uglow. He was Director of Art at Canford School, Dorset from 1986 to 1990. He has exhibited widely both nationally and internationally, including frequently in Paris."

9 September - 29 October: The Vanner Gallery, 45 High Street, SALISBURY, SP1 2PB. Tuesday - Saturday 10am - 5pm. 01722 501551 / vannergallery.com.

RUTH PIPER: 'EMBLEMS OF HOPE'

10 - 15 September

The Malthouse Gallery, The Town Mill, Mill Lane, LYME REGIS, DT7 3PU. Saturday - Wednesday 10am - 5pm, Thursday 10am - 2pm. 07711 541852 / ruthpiper.com.

'PROTECTION'

10 - 18 September

Roper Gallery, The Old Malthouse, Comfortable Place, Upper Bristol Road, BATH, BA1 3AJ. 10am - 5pm. 01225 482480. "Nine artists present an eclectic view of their world."

'NORDEN ART'

10 - 18 September

The Cottage Studio, CORFE CASTLE, BH20 5DT. 10am - 4pm. 01929 480472.

SOPHIE CAPRON

10 - 30 September

Artwave West, MORCOMBELAKE, DT6 6DY. Wednesday - Saturday 10am - 5pm. artwavewest.com.

'ARTISTS OF THE JURASSIC COAST'

10 September - 2 October

Eype Church Centre for the Arts, St Peter's Chapel, Mount Lane, EYPE, near Bridport, DT6 6AP. 10.30am - 4.30pm. 07739 905501.

WINDWHISTLE DESIGNS

12 - 17 September

Somerton, 1 West Street, SOMERTON, TA11 7PS. 10am - 5pm. windwhistledesigns.com.

'ALL RISE'

13 - 17 September

ACE Arts, Market Place, SOMERTON, TA11 7NB. Tuesday - Saturday 10am - 5pm. acearts.co.uk. "A fundraising exhibition."

OLD BAKERY ARTISTS

13 - 25 September

The Arts Quarter, The Lippiatt, CHEDDAR, BS27 3QP. Tuesday - Friday 10am - 3pm, Saturday and Sunday 11am - 4pm. 07587 212921.

KARREN BURKETT

14 - 27 September

The Gallery, Shaftesbury Arts Centre, Bell Street, SHAFTESBURY, SP7 8AR. Monday - Saturday 10am - 4pm. shaftesburyartscentre.org.uk. "Expressive paintings of flowers, trees and local landscapes."



The lost words

JACKIE MORRIS & ROBERT MACFARLANE

26 March to 18 September 2022

Russell-Cotes Art Gallery & Museum



Exhibition organised by



Compton Verney
ART GALLERY & PARK

East Cliff, Bournemouth
Dorset BH1 3AA

www.russellcotes.com

Visual Arts

BOURNEMOUTH ARTS CLUB

16 - 26 September

The Gallery Upstairs, Upton Country Park, POOLE, BH17 7BJ. 10am - 4pm. bournemouthartsclub.co.uk.

JOELLA WHEATLEY: 'RETREATED'

17 September - 1 October

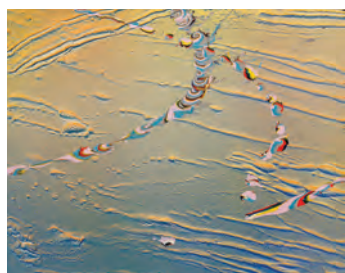
Andelli Art, Mendip House, SOUTH HORRINGTON, Wells, BA5 3QG. Tuesday - Saturday 10am - 5pm. andelliart.com.

CATH BLOOMFIELD: 'A VOCABULARY OF MAKING REVEALED'

17 September - 23 October

Black Swan Arts, 2 Bridge Street, FROME, BA11 1BB. Monday - Sunday 10am - 4pm. blackswanarts.org.uk.

"Collagraphs and collages exploring the human form and landscape via colour, texture and narrative."



ROBIN SEWELL: 'LIGHT WATER REBELLIONS'

17 September - 6 November

The Whittox Gallery, RISE, Whittox Lane, FROME, BA11 3BY. Tuesday - Saturday 9am - 4pm. 07712 523734.

STEVE MANNING: 'A CELEBRATION OF SKY'

19 September - 2 October

Sou'-Sou'-West Arts Gallery, Symonds Estate, BRIDPORT, DT6 6HG. 10.30am - 4.30pm. 01308 301326 / sousouwest.co.uk.

BATH ARTISTS STUDIOS OPEN STUDIOS WEEKEND

23 - 25 September

Bath Artists' Studios, The Old Malthouse, Comfortable Place, Upper Bristol Road, BATH, BA1 3AJ. Friday 6 - 9.30pm, Saturday and Sunday 11am - 5pm. 01225 482480 / bathartistsstudios.co.uk.



JIM PILSTON 'HERNE'

A Cabinet of Curiosities

"Heavily influenced by fables and nostalgia, Frank Harwood's work explores how memories get entangled with the common cultural references of his childhood, including comics he read and the television he watched growing up. Describing his techniques as using a 'simple comic style', Frank uses bold lines with repeated patterns, playing with flat space and vivid colours. Jim Pilston has already made an impact on the local art scene by gaining a keen following of collectors. Jim's work is influenced by legend and folklore, with sculptures that are colourful and full of intrigue. With just a vague sense of the intended outcome when starting a piece, Jim works very instinctively to see what kind of character emerges, whether it is an angel, devil, monster or God. Most of the materials Jim uses are repurposed and recycled. Jim explains "I get a thrill out of creating something magical out of materials that can be found in skips and rubbish piles."

Until 20 September: Heart of The Tribe Gallery, 74 High Street, GLASTONBURY, BA6 9DZ. 11am - 5pm. 01458 832167 / heartofthetribe.com.

DORSET INDEPENDENT PHOTOGRAPHERS

23 - 29 September

The Malthouse, Town Mill, LYME REGIS, DT7 3PU. 10am - 4.30pm. 01297 444042.

DEBORAH TILTMAN

23 September - 6 October

Art Unlimited Gallery, South Street, BRIDPORT, DT6 3NR. Monday - Saturday 9am - 5pm. 01308 426593. *Embroidery.*

JENNI DUTTON: 'ABSURD SEWN SELFIES'

24 September - 15 October

ACE Arts, Market Place, SOMERTON, TA11 7NB. Tuesday - Saturday 10am - 5pm. acearts.co.uk.

'POP UP'

24 September - 16 October

Sou'-Sou'-West Arts Gallery, Symonds Estate, BRIDPORT, DT6 6HG. 10.30am - 4.30pm. 01308 301326 / sousouwest.co.uk.

HELEN BARFF: 'I WRAP MY FEAR AROUND ME LIKE A BLANKET'

24 September - 20 November

Brewhouse, Coal Orchard, TAUNTON, TA1 1JL. 10am - 4pm. tauntonbrewhouse.co.uk.

DAVE WEBSTER: 'RETROSPECTIVE'

25 September - 2 October

Stickland Studio, Stickland Farm, West Street, WINTERBORNE STICKLAND, DT11 0NT. 11am - 4pm. 07833 248371. *"Exhibition of paintings by Glasgow School of Art graduate spanning 1962 to 2022."*

'HIDDEN PERSPECTIVES: A SENSE OF STUDLAND'

26 September - 12 October

Fine Foundation Gallery, Durlston Country Park, Lighthouse Road, SWANAGE, BH19 2JL. 10.30am - 5pm. 01929 421111 / durlston.co.uk. *Drawings, prints, reliefs and sculptures by June Ridgway, Lizzy Short, and Lin Walker.*

'COLOUR THREE WAYS'

27 September - 9 October

Somerton, 1 West Street, SOMERTON, TA11 7PS. 10am - 5pm. 07970 903128. *Paintings, prints and clay by Pennie Elfick, Jeremy Speck, and Kate Wilson.*



We deliver any marketing material

Call Will on 07397 853006

acousticdistribution@btinternet.com

acousticdistribution.co.uk

Follow
EVOLVER MAGAZINE
on Instagram

[evolvermagazine](https://www.instagram.com/evolvermagazine)





Karren Burkett

Work created in the last 12 months, building on that done during lockdown, the life of flowers from vase to bin, portraits of trees and drawings and paintings of Shaftesbury

14 - 27 September



Shaftesbury
Arts Centre

11 - 13 Bell Street, Shaftesbury, SP7 8AF • 10am - 4pm

Tincleton Gallery

contemporary fine art in Dorset

Autumn exhibition

gallery & guest artists

Fri 9 Sep 2022 - Fri 6 Jan 2023



"Sunrise at Moonfleet" by Ruth Ander

The Old School House, Tincleton, near Dorchester, DT2 8QR
Friday / Saturday / Sunday / Monday • 10am - 5pm
01305 848909 • tincletongallery.com

Sou'-Sou'-West

22 Aug - 18 Sep
Unrestricted
Summer Open

19 Sep - 2 Oct
A Celebration of Sky
Steve Manning

24 Sep - 16 Oct
Pop Up
Selected Artists
& Makers

3-16 Oct
Recent Work
Mandy Selhurst
& Ruta Crafter

22 Oct - 6 Nov
Time and Light
Dorset Independent
Photographers

© Steve Manning / Sun Across the Bay 2022



Supported using public funding by
**ARTS COUNCIL
ENGLAND**



Gallery & Shop

Daily: 10:30 - 16:30

Manor Yard, Symondsbur Estate,
Bridport, DT6 6HG

sousouwest.co.uk



Les Matthews

7 September - 9 November

STUDIO 3 GALLERY, Clevedon
Crafter Centre, Moor Lane, BS21 6TD
Open daily 11am - 4pm
07557 331967 • studiothree.art

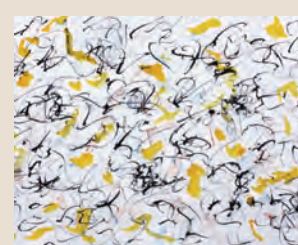


Exhibit A

Artists and photographers
are invited to submit work
for next issue's page 3
Exhibit A by emailing
images to:
simon@evolver.org.uk

Visual Arts

'CREATIVE AND BRAVE'

28 September - 11 October

The Gallery, Shaftesbury Arts Centre, Bell Street, SHAFTESBURY, SP7 8AR. Monday - Saturday 10am - 4pm. shaftesburyartscentre.org.uk.

'ART ON THE HILL'

1 and 2 October

Various venues on Windmill Hill, BRISTOL, BS3 4LW. 11am - 5pm. artonthehill.org.uk. "Community-run arts trail."

PENNY BONSER: 'TEDDY BEAR ORPHANS'

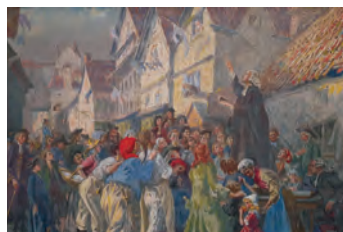
1 - 31 October

The Creative Gallery, St John's Hill, WAREHAM, BH20 4NB. Monday - Saturday 10am - 5pm. 01929 551505 / creativegallerywareham.co.uk. "Handmade miniature collectable artist bears with great character."

BRIDGET SYMS

1 October - 6 November

Gallery On The Square, Queen Mother Square, DORCHESTER, DT1 3BL. Monday - Saturday 9.30am - 5pm, Sunday 11am - 4pm. 01305 213322. *Paintings and prints.*



WILLIAM TITCOMB: 'DRAMA OF THE OPEN-AIR STAGE'

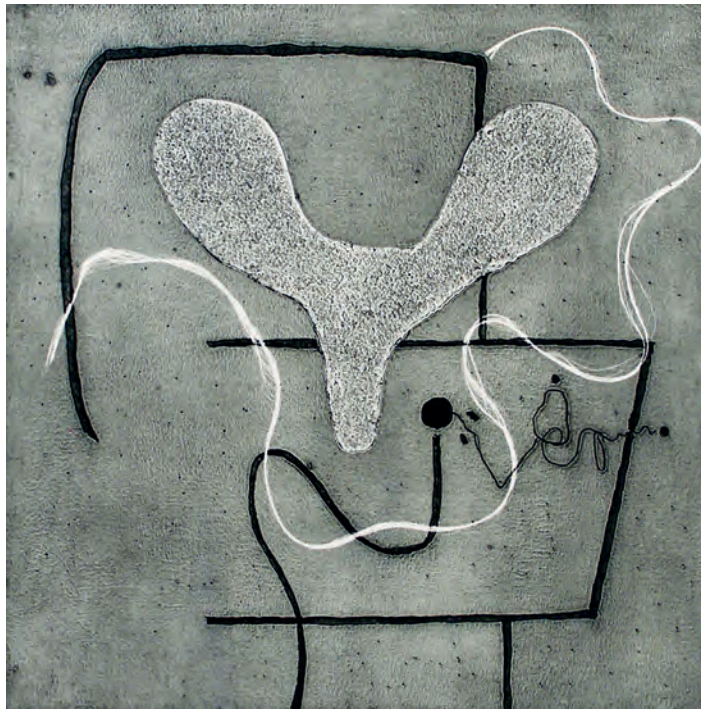
1 October - 4 February

John Wesley's New Room, 36 The Horsefair, Broadmead, BRISTOL, BS1 3JE. Monday - Saturday 10am - 4pm. £7 / £6 / £4. 0117 926 4740 / newroombristol.org.uk. "This exhibition explores Titcomb's love of drama, which led him to depict a contentious moment defining John Wesley's life and legacy."

MANDY SELHURST AND RUTA CRAFTER

3 - 16 October

Sou'-Sou'-West Arts Gallery, Symonds Estate, BRIDPORT, DT6 6HG. 10.30am - 4.30pm. 01308 301326 / sousouwest.co.uk.



SUSAN ALDWORTH 'RESPONDENCES 8: LOVE LETTERS TO VICTOR' (2018)

Prism @ Atkinson

"Exhibition of work by members of Prism Print International. The prints will be displayed unframed, providing an opportunity to view the unique qualities of each individual print."

5 September - 6 October: Atkinson Gallery, Millfield School, STREET, BA16 0YD. Monday - Thursday 9.30am - 5pm. 01458 444322. millfieldschool.com/atkinson-gallery.

CHLOE HOLT AND PARASTOO GANJEI

3 - 29 October

David Simon Contemporary, 37 High Street, CASTLE CARY, BA7 7AW. Monday - Saturday 10am - 5.30pm (Closed Wednesdays). davidsimoncontemporary.com.

'TRAVELS THROUGH THE LANDSCAPE'

4 - 29 October

Gallery 4, First Floor, Salisbury Library, Market Place, SALISBURY, SP1 1BL. Monday - Saturday 10am - 5pm. 07515 482406. "Paintings by Karen Welsh and Jane Walker, plus textiles by Felicity Jowitt."

NICK BERKELEY

4 October - 12 November

Bridport Arts Centre, 9 South Street, BRIDPORT, DT6 3NR. Tuesday - Saturday 10am - 4pm. 01308 424204. *Photographs.*

'PLANTS FOR WILDLIFE'

7 - 25 October

Bath Royal Literary & Scientific Institution, Queen Square, BATH, BA1 2HN. Monday - Saturday 10am - 4pm. bsba.co.uk.

CHEW VALLEY ARTS TRAIL

8 and 9 October

Various locations in and around CHEW VALLEY, Somerset. 10am - 6pm. chewvalleyartstrail.co.uk.

NIGGY DOWLER

8 - 29 October

Hybrid Gallery, 51 High Street, HONITON, EX14 1PW. Tuesday - Saturday 10am - 5pm. 01404 43201 / hybrid-devon.co.uk.

JOYCE RINGROSE

8 October - 5 November

Hatch Gallery, 7a Church Street, CHRISTCHURCH, BH23 1BW. Tuesday - Saturday 11am - 4pm. 07787 517958 / hatchgallery.co.uk. "Paintings of the Dorset coast."

RWA ANNUAL OPEN 169

8 October - 8 January

Royal West of England Academy, Queen's Road, Clifton, BRISTOL, BS8 1PX. 10am - 4pm. £8. 0117 973 5129 / rwa.org.uk.

'TELLING TALES: THE STORY OF VICTORIAN NARRATIVE ART'

8 October - 12 March

Russell-Cotes Art Gallery and Museum, East Cliff, BOURNEMOUTH, BH1 3AA. Tuesday - Sunday 10am - 5pm. £8.50 / £4.50. 01202 128000 / russellcotes.com.

PARKSTONE CAMERA CLUB

10 - 13 October

Unit 33, The Dolphin Centre, POOLE, BH15 1SZ. 9.30am - 4.30pm. parkstonecameraclub.org.uk.

ERIC BAILEY AND DAVID MARL

12 - 18 October

The Gallery, Shaftesbury Arts Centre, Bell Street, SHAFTESBURY, SP7 8AR. Monday - Saturday 10am - 4pm. shaftesburyartscentre.org.uk. *Paintings.*

SARA TRENCHARD: 'THE ARRANGEMENT OF COLOUR'

13 October - 13 November

Heart of The Tribe Gallery, 74 High Street, GLASTONBURY, BA6 9DZ. 11am - 5pm. heartofthetribe.com.

CAROLYN MORAN

19 - 25 October

The Gallery, Shaftesbury Arts Centre, Bell Street, SHAFTESBURY, SP7 8AR. Monday - Saturday 10am - 4pm. shaftesburyartscentre.org.uk.

THE BATH OPEN ART PRIZE

19 - 30 October

44AD Artspace, 4 York Street, BATH, BA1 1NN. 11am - 6pm. bathopenartprize.co.uk.





Showcasing ceramics, paintings, textiles, jewellery and glass by local artists

Mark Codling
Green Woodsman
1st-30th September











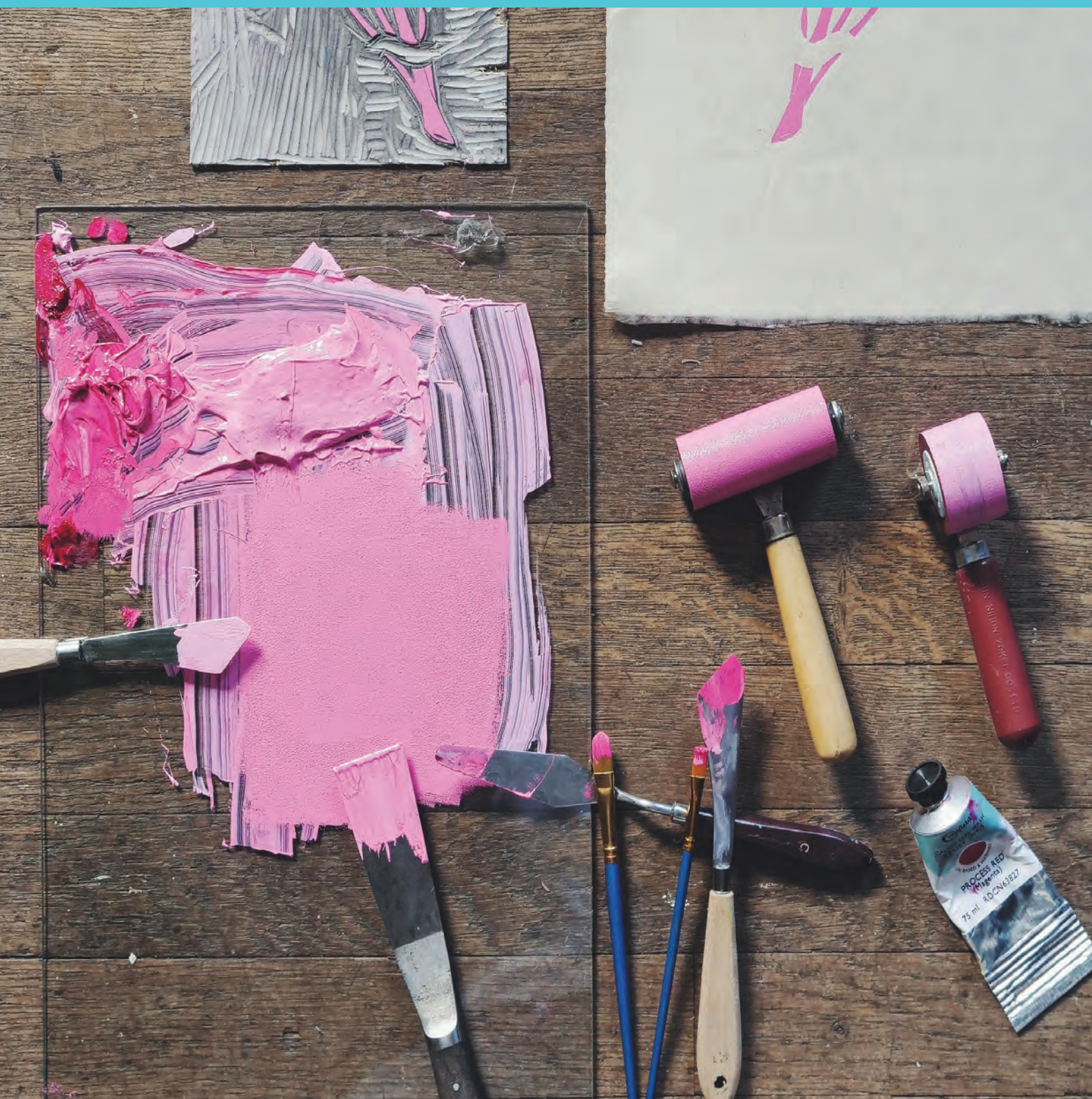
Penny Ponsler
Teddy Bear Orphans
1st-31st October

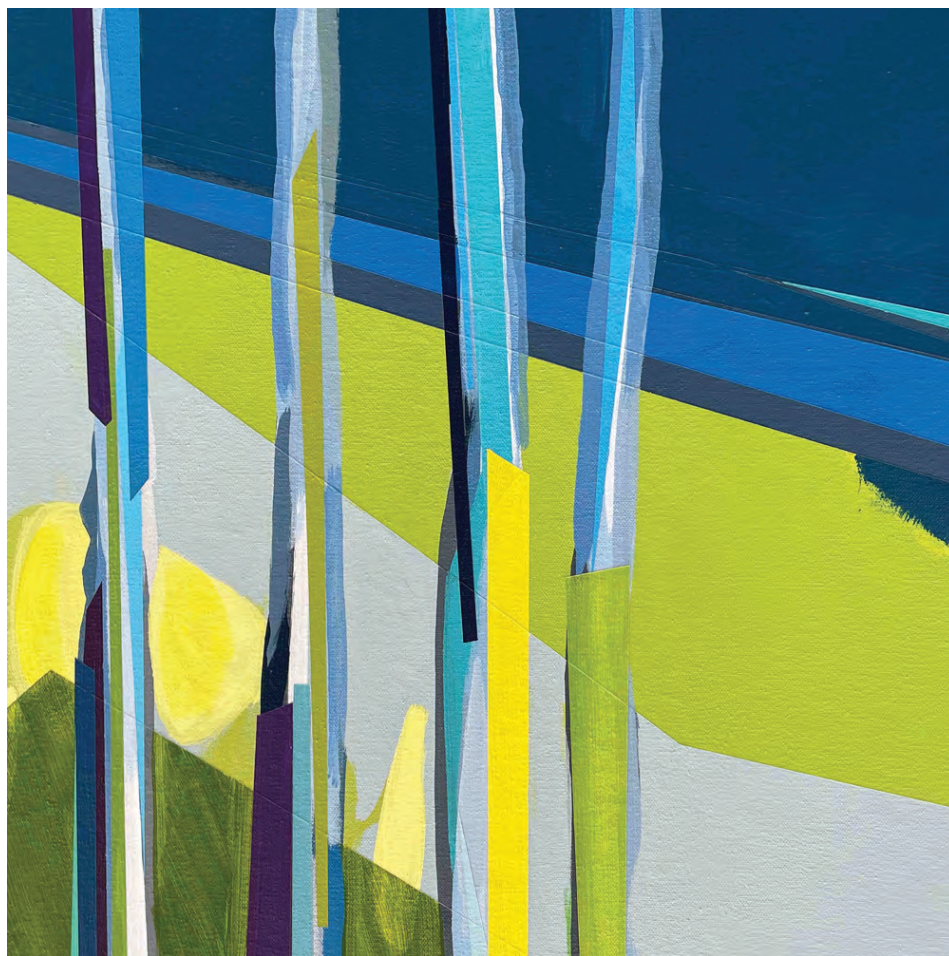
St John's Hill, Wareham, Dorset BH20 4NB t 01929 551505 e fiona@creativegallerywareham.co.uk
Open Daily 10-5 to 30th September, then 10-5 Monday-Saturday

SOMERSET ART WEEKS 2022

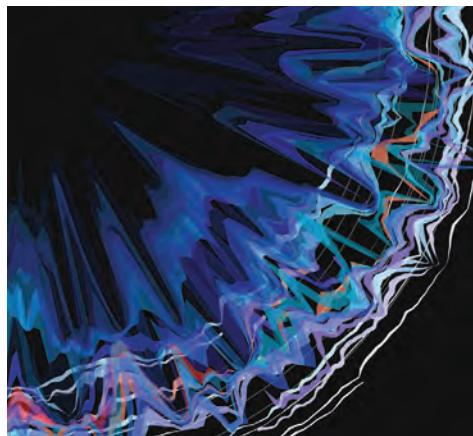
EVOLVER MAGAZINE PULL-OUT SUPPLEMENT

SOMERSET SIGHT (VENUE 101)





GEORGINA TOWLER (VENUES 42 + 90)



DAVE WEBB (VENUE 42)



HELEN BARFF (VENUE 96)

Artists across Somerset will be responding to the theme of 'SANCTUARY' for this year's SOMERSET ART WEEKS, with exhibitions, events and group shows returning after last year's postponed Festival event.

More than 300 artists will be hosting exhibitions and events in over 100 venues, including loft spaces, tithe barns, stables, museums, churches, farms, libraries, as well as an abbey and a prison!

Members of SOMERSET ART WORKS, commissioned artists and bursary winning artists will be showcasing new work, giving local people and visitors to the county the opportunity to discover high quality shows and exhibitions in unique and inspiring locations across the county.

Artists have interpreted the theme of *Sanctuary* in many different ways, such as with paintings of the natural world, mindful mark making and a poetic sanctuary. Poet KATRINA NAOMI and eco-writer SARA HUDSTON responded to the natural heritage of Alfoxton Park with its links to Wordsworth and Coleridge as the birthplace of English Romanticism.

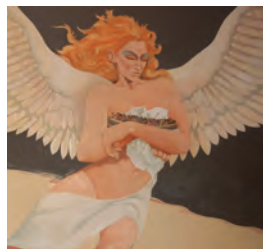
Somerset Art Works recently declared a Climate Emergency, and reflecting this, the event has a focus on sustainability. Many of the artists have been inspired by our relationship to the natural world. Others have responded to shared experiences of the pandemic, often highlighting positive changes or allowing visitors to contemplate.

SIÂN CANN finds sanctuary walking in the woodlands with her Polaroid camera, absorbing quiet moments in nature and observing the poetry of light between the leaves. The woodlands became more important to her when she began to lose her sight during lockdown, and her documentation of this natural space became her reassurance.

The name Muchelney means 'great island'. In times of flood, the church there provided sanctuary. To reflect this, JANE



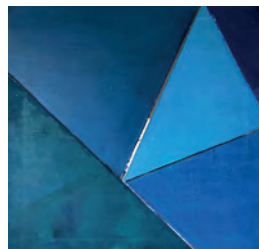
Lucy Gallwey



Mike Chapman



Jenny Mellings



Judith Ellis



Lucy Hawkins

Sanctuary - Art at Crewkerne & District Museum and Heritage Centre

VENUE 10 - Showcasing landscape, figurative and abstract work by five Crewkerne artists

Please see SAW events for our community art workshops

Market Square, Crewkerne, TA18 7LP • Open daily 10am - 4pm • crewkernemuseum.co.uk

hawkins705@btinternet.com • 07530 585181



Somerset Art Weeks 2022

MOWAT has created an installation of embroidery that floods, from the font and down the church nave, sewn with images of native plants.

Wells Art Contemporary Bursary winner LEAH HISLOP will install a sculpture constructed from handmade, individually folded Origami Building blocks at Kingweston Church near Keinton Mandeville. Triangular folds within the work tie in with the symbol of the number three and The Holy Trinity, along with the concept of guidance and protection.

Six artists have taken over C-Wing at Shepton Mallet Prison to create immersive and interactive artworks using a variety of artforms and techniques, including creative computer coding, an installation exploring light and colour, painting and mark making as a practice of mindfulness, exploring conversations on postcolonial ideas of the Black British experience in the UK, and participatory installations considering themes of wellbeing.

In celebration of the Queen's Green Canopy tree planting initiative, THE ARBOREALISTS present a new exhibition in the Music Hall at Fyne Court. The exhibition has a theme of regeneration to help promote tree planting – a vital strand of the environmental crisis recovery strategy.

As well as themes around nature, environment and locality, artists have interpreted the social, spiritual and sustainable elements in this year's programme.

Dissolution to Evolution is a programme that explores support systems, social experiments and religious beliefs. Curated by SAW guest curator JOSEPHINE LANYON in response to the history of Glastonbury Abbey, the exhibition in Abbey House includes *RAFTS* (2022), a film by RORY PILGRIM, and drawings and costumes by OLIVIA PLENDER shown alongside archaeological material. There will also be roving performances,



LEAH HISLOP (VENUES 17 + 25)

Broadside Ballads, devised by SALLY O'REILLY with Somerset artists which will take place in the grounds and gardens.

JACKY OLIVER has created a large-scale kinetic sculpture for Somerset Rural Life Museum's 14th-century Abbey Barn and will be running workshops to accompany the exhibition. The sculpture draws inspiration from research into the different ways horses have been central to Somerset's rural heritage.

ACE ARTS in Somerton presents *Absurd Sewn Selfies* by JENNI DUTTON, a collection of mixed media explorations into identity, ageing, disguise and power. The work is made using traditional female materials and processes and offers the universal search for relevance in a world that can undervalue older members of society.

A full event programme includes talks, walks and workshops focussing on making art, wellbeing and a return to nature. Each weekend will be Family Friendly, with arts activities for families of all shapes and sizes, encouraging everyone to join in, along with events as part of national initiative The Big Draw.

The Somerset Art Weeks Guide is now available in cultural centres, libraries and Tourist Information Points across Somerset and beyond, so visitors can see what's on, who is taking part and start planning their visits. There is also an online version of the Guide on the Somerset Art Works website, with an interactive map and event calendar, and the Somerset Art Weeks App is now available to download.

somerstartworks.org.uk



17 September - 29 October

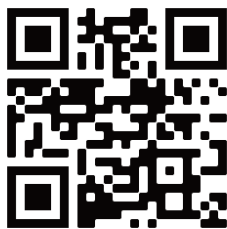
GRAŻYNA & CHRIS
WIKIERSKA & DUNSEATH

YEOVIL ART SPACE

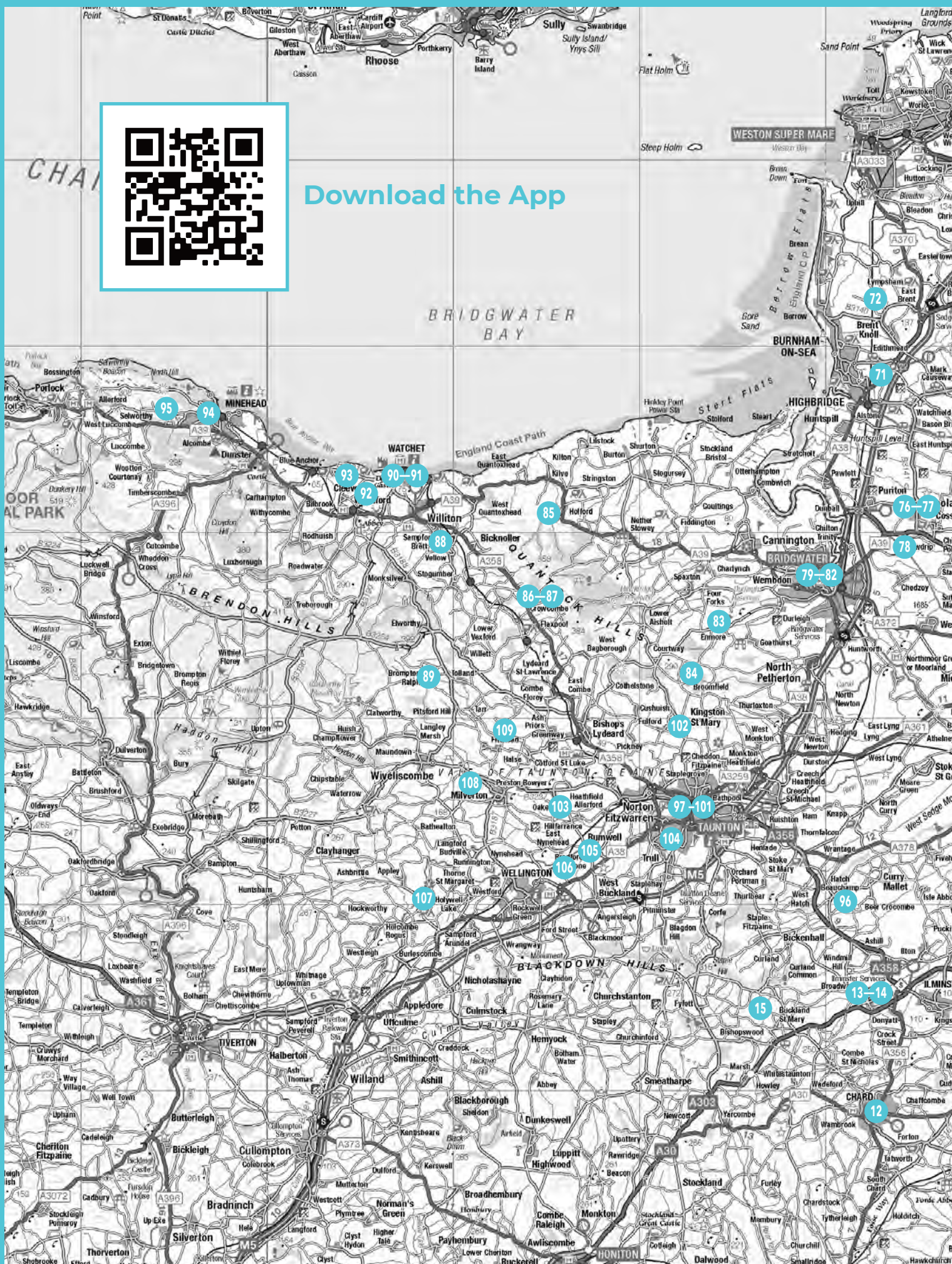
10-4 (Wed to Fri) 10-5 (SAT) Somerset Art Weeks VENUE 1
23 Quedam Shopping Centre, Yeovil www.yeovilartspace.uk @yeovilartspace



Somerset Art Weeks 2022



Download the App







Kay Lewis-Bell



Terri Hogan

VENUE 33

Shave Farm Artists

Shave Farm, South Brewham, Bruton, BA10 0LG

11am - 5pm

(Closed Mondays, Tuesdays and Wednesdays)

01749 812335



Lin Hawkins



Annie Fry

VENUE 45



Tales of Ro

The Otherworldly Artworks of Rowena J Draper

1 The Old Office, Great Ostry,
Shepton Mallet, BA4 5TT
rowenajdraper.com

THE GLEANING
Community arts project
exhibition and events

St Peter & St Paul's Church
Shepton Mallet BA4 5BW
22 September - 9 October 10am-5pm daily
Somerset Art Weeks 2022
@thegleaning_shepton

VENUE 44



VENUE 23

JENNI DUTTON

'ABSURD SEWN SELFIES'



VENUE 38

Christine-Ann Richards & Lutz Krainhoefner

Chapel House, High Street,
Wanstrow, BA4 4TE

Open 11am - 5pm

Closed Monday and Tuesday

christineannrichards.co.uk



Dove Studios

SANCTUARY / ALCHEMY

Bronwen Bradshaw, Kathryn John, Myfanwy Morris,
Guy Begbie, Mike Dodd, Dove Book Club artists

Prints, books, inkworks, words, photography, stoneware

SAW venue 059: Dove Studios, Barton Road, Butleigh, BA6 8TL
07905 644015 • bronwenbradshaw.co.uk



Venue 051

Colin Harrow

Painting and photography
3 Nettlecombe House, South
Horrington, Wells, BA5 3HJ
01749 679392
colinharrowart.co.uk



COLOUR THREE WAYS

Pennie Elfick
Jeremy Speck
Kate Wilson

paint, print & clay

27 September—9 October 2022

SOMERSET 10am—5pm

1 West Street, Somerton, Somerset, TA11 7PS

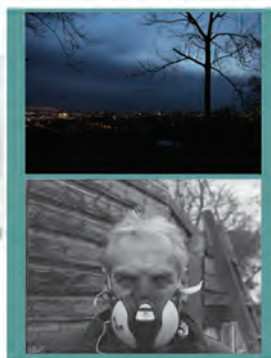


OPEN DAILY: WEDNESDAY to SUNDAY 10AM-5PM • CLOSED MONDAYS & TUESDAYS

LILY SAWTELL • ODYSSEY: My Journey Back Home - a journal with iPad illustrations •

sculpture • drawings • paintings • photography • in my garden sanctuary with stunning Mendip views

FRED SAWTELL-COUSINS • photography & film about ISOLATION



THE HAVEN • BAGLEY • WEDMORE • SOMERSET • BS28 4TG
T 07976 591741 W www.lilysawtell.com E lilysawtell@gmail.com

'Attention is the beginning of devotion'

This quote from a poem by Mary Oliver's 2016 poem *Upstream* has come to encapsulate Kelly M O'Brien's passion for bees: 'I started paying attention to nature during the pandemic and now I am devoted to bees and all pollinators. I am not going to take their honey!'

The last few years have taken a toll on O'Brien and like many of us it is the uncertainty that has been one of the most difficult challenges. She is participating in Somerset Art Weeks and has responded to a commission on the theme of Sanctuary with a proposal to construct an outdoor installation at Deer Leap Nature Reserve in the Mendip Hills. *Pollinator Sanctuary* will be a 250 x 95 x 95 cm structure consisting of a natural beehive and a ground bee habitat and it will be sited near a B-Line which is part of a national corridor for pollinators.

The top hive will be an inverted egg form, 65 x 48 cm, which is the ideal size to accommodate 35 - 40,000 wild bees. In the middle, mushrooms will be allowed to grow and the ground-based area will accommodate bumblebees. Bees set up new hives in the spring although they can already scout for new locations before then. Mendip Hills AONB have agreed to allow the structure to stay in place and Kelly is hoping that a colony of pollinators will move in next spring.

Kelly's work is about precarity (the state of being or feeling precarious or uncertain), care and repair related to climate change. She completed an MA at Bath Spa at the end of 2019 working with hot glass and steel which both have high energy demands. By March 2020, lockdown meant she could no longer use the fabrication facilities around Bath so working from home she was forced to explore other materials. 'Looking at ways of casting for sculpture, I stumbled upon mycelium (mushroom roots)'. It is used on an industrial scale to make packaging. 'It acts like wood or compressed cork and is completely biodegradable taking only 45 days to break down.'

Mycelium is made from mushroom spores. Once they stop growing you are left with a material which is light and rigid and looks a bit like cast plaster. For Kelly this was perfect for making sculpture 'In terms of me rebuilding my visual vocabulary it was a really interesting material'. It requires a clean controlled environment during the growing process which results in a soft velvety surface similar to mushroom skin, conversely contamination can produce some very interesting surfaces. It can also be used to cast objects. If you inoculate a substrate like hemp with mushroom spore it will grow to take the form of whatever you put it in.



'PROTECTIVE NATURE' (Cast mycelium, wool, wood, 160 x 30 x 30 cm, 2022)

Kelly M O'Brien

Kelly is increasingly exploring the concept of 'bioempathy', which acknowledges the vital importance to our well-being and that of the planet of an involvement with nature. 'A hopeful property of fungi is that certain species can protect bees from viruses leading to Colony Collapse Disorder. *Pollinator Sanctuary* brings these ideas together by using cast mycelium as shelter for bees.'

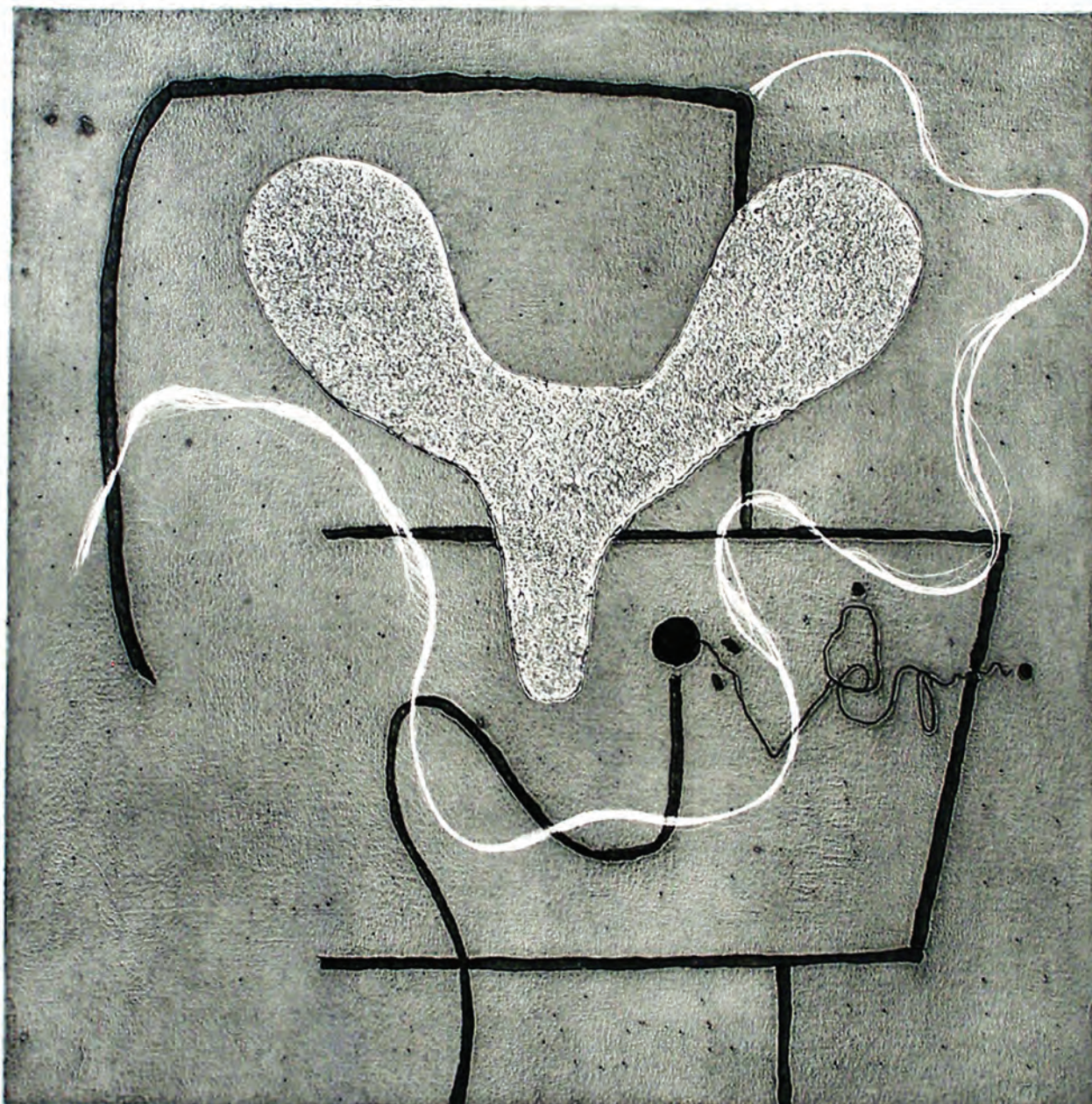
Part of the land where she lives was a brownfield site and she has created a wildflower meadow there. Wild flowers thrive on poor soil so it is ideal for her purposes. Immersing herself in the biodiversity of her wildflower meadow contributed to her determination to completely change her practice and make it more sustainable. She also did a residency at PADA in Lisbon in Portugal in

2022 on a brownfield site, the largest post-industrial site in Europe. She is a big fan of Cal Flynn's wonderful book *Islands of Abandonment: Life in the Post-Human Landscape*.

O'Brien is a committed ambassador for biodiversity and is 'Interested in developing a practice which is more than something that you look at'. Her working practice has become much more improvisational since she start using mycelium and there is a clear sense that this is a collaboration with both a living material and with the bees who will find sanctuary in her structures.

Fiona Robinson

Venue 58: Deer Leap, PRIDDY, Wells, BA5 1EL. Open 24 hours. 07983 312643 / pollinators.sanctuary.art



Susan Aldworth, Responses 8: Love Letters to Victor, 2018

Prism @ Atkinson

An Exhibition of International Printmaking

5 September - 6 October 2022

Atkinson GALLERY



MILLFIELD

Millfield, Street, Somerset BA16 0YD - Monday to Thursday - 9.30 a.m. to 5 p.m.
www.atkinsongallery.co.uk - Tel: 01458 444322 / 444176



Visual Arts

'OFF THE BEATEN TRACK'

21 - 30 October

Summerleaze Gallery, EAST KNOYLE, Salisbury, SP3 6BY. 10am - 5pm. summerleazegallery.co.uk. Paintings and etchings by Victoria Garland, Paul MacDermot, Rachel Sargent, and Tim Scott Bolton.

'ART IN BROADSTONE'

22 - 30 October

The Youth Centre, Moor Road, BROADSTONE, BH18 8AZ. 10am - 4pm. broadstoneartsociety.com.

DORSET INDEPENDENT PHOTOGRAPHERS: 'TIME AND LIGHT'

22 October - 6 November

Sou'-Sou'-West Arts Gallery, Symonds Estate, BRIDPORT, DT6 6HG. 10.30am - 4.30pm. 01308 301326 / sossouwest.co.uk.

LOUISA CRISPIN: 'FLIGHTPATH'

22 October - 19 November

ACE Arts, Market Place, SOMERTON, TA11 7NB. Tuesday - Saturday 10am - 5pm. 01458 273008 / acearts.co.uk. "Drawing, painting, stitching, collage, cutting, printing."



'A YEAR ON HENGISTBURY HEAD'

22 October - 27 November

Red House Museum, Quay Road, CHRISTCHURCH, BH23 1BU. 10am - 4pm. 07969 436921 / artofstaringout.co.uk. "New work by Sarah Humby and Jayne Soakell."

NEW DORSET ART GROUP

26 October - 8 November

The Gallery, Shaftesbury Arts Centre, Bell Street, SHAFTESBURY, SP7 8AR. Monday - Saturday 10am - 4pm. 01747 855243 / shaftesburyartscentre.org.uk. "Varied work by Dorset artists."



HUBERT HERKOMER 'TESS OF THE D'URBERVILLES'

Hardy's Wessex

"If you haven't already had a chance to see *Hardy's Wessex* at Dorset Museum, Poole Museum, The Salisbury Museum and Wiltshire Museum, there is still time left! The exhibitions will be running until Sunday 30 October. Alongside these four exhibitions is a host of events, including online talks, stone carving workshops, cookery days, wood engraving sessions, family storytelling and arts and crafts.

As part of the exhibition Wessex Museums have also released a series of fortnightly podcasts - *Interrogating Hardy*. In each episode, curator Harriet Still and guests look at whether Thomas Hardy's views on various themes were cutting edge for his time or just part of the general Victorian world view. So far, they've covered wide-ranging ground, from landscapes and rural poverty to love and romance. Catch up through Audioboom, Apple podcasts, Spotify or wherever you access your podcasts."

Until 30 October

Dorset Museum, High West Street, DORCHESTER, DT1 1XA. Monday - Saturday 9am - 4.30pm, Sunday and Bank Holidays 10am - 4pm. 01305 262735 / dorsetmuseum.org.

Salisbury Museum, The Kings House, 65 The Close, SALISBURY, SP1 2EN. 10am - 5pm. 01722 332151 / salisburymuseum.org.uk.

Poole Museum, 4 High Street, POOLE, BH15 1BW. 10am - 5pm. 01202 128888 / poolemuseum.org.uk.

Wiltshire Museum, 41 Long Street, DEVIZES, SN10 1NS. Monday - Saturday 10am - 5pm, Sunday 11am - 3pm. 01380 727369 / wiltshiremuseum.org.uk.

A Vocabulary of Making
revealed

CATH BLOOMFIELD
17 Sep - 23 Oct 2022

24 SEP - 9 OCT 2022
ROUNDTOWER

SIÂN CANN

DRAWING NEAR THE LIGHT

SARAH-MAY ROGERS

SANCTUARY **SCW** somerset art works

galleries | round tower | studios | shop | cafe
2 Bridge Street, Frome BA11 1BB | 01373 473980

BLACKSWANARTS

www.blackswanarts.org.uk
FREE ENTRY | Registered Charity No. 292463

Music

September and October 2022

HUMPHREYS, BERRIDGE & GRIMWOOD

2 September

Bridport Arts Centre, 9 South Street, BRIDPORT, DT6 3NR. 11.30am. 01308 424204 / bridport-arts.com.

THE BRUBECK PROJECT

2 September

Bridport Arts Centre, 9 South Street, BRIDPORT, DT6 3NR. 8pm. 01308 424204 / bridport-arts.com.

BSO: 'SYMPHONIC GEMS'

8 September

Weymouth Pavilion, The Esplanade, WEYMOUTH, DT4 8ED. 7.30pm. £29 / £17. 01305 783225 / bsolive.com.

THE TANNAHILL WEAVERS

9 September

Corn Exchange, High East Street, DORCHESTER, DT1 1HF. 7.30pm. £15 / £13. dorchesterarts.org.uk.



BEFORE BREAKFAST

9 September

Brewhouse Theatre & Arts Centre, Coal Orchard, TAUNTON, TA1 1JL. 8pm. £12. thebrewhouse.net.

NICK HAYWARD

10 September

The Exchange, Old Market Hill, STURMINSTER NEWTON, DT10 1FH. 8pm. £23. stur-exchange.co.uk.

'ABSOLUTE REGGAE'

13 September

Lighthouse, 21 Kingland Road, POOLE, BH15 1UG. 7.45pm. 01202 280000 / lighthousepoole.co.uk.

EMMA ABBATE & JULIAN PERKINS: 'DUALITY'

14 September

Pound Arts Centre, Pound Pill, CORSHAM, SN13 9HX. 1pm. £8. 01249 701628 / poundarts.org.uk.



Nick Hart

"One of the most acclaimed traditional singers of his generation, Nick Hart is touring his new album in Autumn 2022. An incredible performer: this is a night you can't miss!"

7 October: Village Hall, BALTONSBOROUGH, BA6 8PX. 8pm. £11 / £8. 07773 050214 / takeart.org.

8 October: Village Hall, ROADWATER, TA23 0QY. 7.30pm. £10 / £6. 07745 318486 / takeart.org.

9 October: Village Hall, CHARLTON HORETHORNE, DT9 4FY. 7.30pm. £12 / £8. 01935 814199 / takeart.org.

THE PEOPLE VERSUS

15 September

Brewhouse Theatre & Arts Centre, Coal Orchard, TAUNTON, TA1 1JL. 7.45pm. £12. thebrewhouse.net.

THE OFTEN HERD

16 September

Brewhouse Theatre & Arts Centre, Coal Orchard, TAUNTON, TA1 1JL. 8pm. £12. thebrewhouse.net. "Bluegrass band."

BSO: 'SEPTEMBER SERENADE'

16 September

St Giles & St Nicholas' Church, Church Lane, SIDMOUTH, EX10 8LG. 7.30pm. £21. bsolive.com.

ANDY FAIRWEATHER LOW AND THE LOW RIDERS

16 September

The Exchange, Old Market Hill, STURMINSTER NEWTON, DT10 1FH. 7.30pm. £22. stur-exchange.co.uk.

WILKO JOHNSON + JOHN OTWAY

16 September

Lighthouse, 21 Kingland Road, POOLE, BH15 1UG. 7.30pm. 01202 280000 / lighthousepoole.co.uk.



GAVIN LAZARUS AND THE 20TH CENTURY FOXES

16 September

Cedars Hall, The Liberty, WELLS, BA5 2ST. 7.30pm. £18 / £16. 01749 834483 / cedarshallwells.co.uk. "Classic jazz and swing with an emphasis on the great songwriters, George Gershwin, Cole Porter, Irving Berlin, Richard Rogers."



DAVID GORDON

16 and 17 September

Tincton Gallery, The Old School House, TINCLETON, near Dorchester, DT2 8QR. 7.30pm. £15. tinctongallery.com. Jazz.

WAREHAM FOLK HARVEST

17 September

Various locations, WAREHAM, BH20 4LP. 10am - 10pm. 07817 053872 / warehamfolkharvest.co.uk. "A full day of music featuring national and local acts."

SKYLLA

17 September

Sandy Hill Arts, Sandy Hill Studios, Sandy Hill Lane, CORFE CASTLE, BH20 5JF. 7.30pm. £15. 07716 080999 / sandyhillarts.co.uk.



METHERA

22 September

John Wesley's New Room, 36 The Horsefair, Broadmead, BRISTOL, BS1 3JE. 7pm. £17 / £15 / £13. 0117 926 4740 / newroombristol.org.uk. "Groundbreaking contemporary string quartet with roots firmly planted in English traditional music."

CHRIS WOOD

22 September

Pound Arts Centre, Pound Pill, CORSHAM, SN13 9HX. 7.30pm. £16. 01249 701628 / poundarts.org.uk.

BSO: 'SYMPHONIC PICTURES'

23 September

Wiltshire Music Centre, Ashley Road, BRADFORD-ON-AVON, BA15 1DZ. 7.30pm. £32 / £17. bsolive.com.

MIAMI GROOVE MACHINE

23 September

The White Hart, 19 - 21 Sadler Street, WELLS, BA5 2RR. 7pm. £10. 01749 681395 / enosisevents.com.

DEAN CARTER

24 September

Pageant Gardens, SHERBORNE, DT9 3NP. 2pm. Free entry. 01935 389655. "Indie-ambient-acoustic guitarist-singer-songwriter."

MARTY WILDE & THE WILDCATS

24 September

The Exchange, Old Market Hill, STURMINSTER NEWTON, DT10 1FH. 7.30pm. £24. stur-exchange.co.uk.



ISATA KANNEH-MASON

29 September

The Hardy Theatre, Queen's Avenue, DORCHESTER, DT1 2ET. 7.30pm. £25 / £15. 01305 266926 / dorchesterarts.org.uk.

LIANE CARROLL TRIO

30 September

Lighthouse, 21 Kingland Road, POOLE, BH15 1UG. 8pm. lighthousepoole.co.uk. Jazz.



The Chesterfields

38 years since they formed in Yeovil, Somerset, and 28 years since their last record release, The Chesterfields are back with a new album *New Modern Homes* in September.

The Chesterfields came to prominence in 1986 as part of a thriving UK underground scene that had turned its back on bland over-produced 1980s chart music and was looking for back to basics pop music. Bands, independent record labels, gig promoters and fanzine editors were making their own entertainment, with The June Brides, The Wedding Present, Primal Scream and The Loft leading the way, championed by Radio One's John Peel and Janice Long. They released three albums (*Kettle* getting to number 2 in the independent charts), five singles (*Ask Johnny Dee* reaching number 3), and toured the UK and Europe non-stop before splitting in 1989.

They reformed briefly in 1993 to tour Japan and release a fourth album, and then returned to action 23 years later when they were asked to play New York Pop Fest in 2016. The current line-up features Simon Barber on bass and vocals, Rob Parry on drums, Helen Stickland on guitar and vocals, and Andy Strickland on guitar and vocals.

Summer 2021 saw The Chesterfields head for the local Axe & Trap studio in Wells, Somerset, to record a dozen new songs for the album, with writing credits spread across the band. The sessions were co-produced by the Chesterfields and Ben Turner. John Parish (PJ Harvey, Eels, Dry Cleaning) joined the final sessions, helping shape the songs before taking the tapes back to his own Honorsound studio in Bristol for mixing and some additional recording - including keyboards, percussion and providing the distressed 'astronaut vox' at the end of *Ace From Space*.

23 September: Vinyl Van, 8a Pope Street, DORCHESTER, DT1 1GW. 7pm. Free entry. vinylvan.co.uk.

24 September: HMV, Quedam Shopping Centre, YEOVIL, BA20 1EX. 1pm. Free entry.

24 September: The Lyric Theatre, 9 Barrack Street, BRIDPORT, DT6 3LX. £10. 01308 424901 / bridportandwestbay.co.uk. *The Chesterfields + Jody & The Jermis*.

10 October: The Louisiana, Wapping Road, Bathurst Terrace, BRISTOL, BS1 6UA. 0117 926 5978 / thelouisiana.net. *The Chesterfields + The Lovely Basement + The Rhynes*.

14 October: The Tree House, 35 Berkley Road, FROME, BA11 2EH. cheeseandgrain.com. *The Chesterfields + Mighty One*.



We are a funky, independent record shop stocking a great range of new and preloved vinyl, specialising in Reggae, Hip Hop, Soul, Funk, World, Electronic, Jazz, Blues, Alternative, Indie, Rock, Pop and more

8a Pope Street, Brewery Square, Dorchester, DT1 1GW
Tuesday to Saturday from 10am



CLOCKTOWER MUSIC, Bridport's vinyl record shop welcomes our satellite shop **CLOCKTOWER TOO**

Clocktower Too specialises in all styles of music on CD, plus a selection of music memorabilia and vinyl records

35a South Street, Bridport, Dorset DT6 3NY

Open Monday, Wednesday, Friday and Saturday, 9.30am - 3.30pm

BOURNEMOUTH SINFONIETTA CHOIR

1 October

Methodist Church, 4A King Street, WIMBORNE, BH21 1DY. 2pm. £20 / £5. 01722 710511 / bschoir.org.uk.

SUE HARDING + GABRIEL MORENO

2 October

Home.in.Frome, 21 Market Place, FROME, BA11 1AN. 7pm. £10. 01373 471748. "Folk and Americana songs, full of poetry and invention."

AOIFE SCOTT

4 October

Brown Street, 29 Brown Street, SALISBURY, SP1 2AL. 7.30pm, Music 8pm. £12.50. 07851 758457.

BOURNEMOUTH SYMPHONY ORCHESTRA

5 October

Lighthouse, 21 Kingland Road, POOLE, BH15 1UF. 7.30pm. £48 £16. 01202 669925 / bsolive.com.



'POCKET SINFONIA'

6 October

Cedars Hall, The Liberty, WELLS, BA5 2ST. 7.30pm. £16. 01749 834483 / cedarshallwells.co.uk.

RUBY TURNER

6 October

The Exchange, Old Market Hill, STURMINSTER NEWTON, DT10 1FH. 8pm. £22. stur-exchange.co.uk.

THE CLAY BOTTOM JUG BUSTERS

7 October

Bridport Arts Centre, 9 South Street, BRIDPORT, DT6 3NR. 8pm. 01308 424204. "Booty shaking blues and hard hootin' hokum straight from the streets of 1930s Memphis."

MARTIN CARTHY

7 October

Brewhouse Theatre & Arts Centre, Coal Orchard, TAUNTON, TA1 1JL. 8pm. £15. thebrewhouse.net.



Grace Petrie

"Grace Petrie is a folk singer, songwriter, and activist from Leicester. She first exploded onto the national protest scene in 2010 with the emotive anthem *Farewell to Welfare*, which captured perfectly the spirit of the new wave of dissent in austerity Britain. Since then, she has written, recorded and toured relentlessly."

31 October: Bridport Arts Centre, South Street, BRIDPORT, DT6 3NR. 7.30pm. 01308 424901 / bridport-arts.com. *Grace Petrie + Ben Moss.*

JUBILEE QUARTET

7 October

Bridport Arts Centre, 9 South Street, BRIDPORT, DT6 3NR. 11.30am. 01308 424204 / bridport-arts.com.

RUBY TURNER

8 October

Brewhouse Theatre & Arts Centre, Coal Orchard, TAUNTON, TA1 1JL. 7.30pm. £24.50. thebrewhouse.net.

LARKHALL

8 October

Pound Arts Centre, Pound Pill, CORSHAM, SN13 9HX. 7.30pm. £10. 01249 701628 / poundarts.org.uk.



JACK BESSANT + THE CHEDDAR EXPERIMENTAL BAND

8 October

Cedars Hall, The Liberty, WELLS, BA5 2ST. 7.30pm. £14 / £7. 01749 834483 / cedarshallwells.co.uk.

LUCY FARRELL

12 October

John Wesley's New Room, 36 The Horsefair, Broadmead, BRISTOL, BS1 3JE. 7pm. £17 / £15 / £13. 0117 926 4740 / newroombristol.org.uk. "Contemporary English folk full of odd and unconventional melodies."

BSO: 'ORCHESTRAL TITANS'

12 October

Lighthouse, 21 Kingland Road, POOLE, BH15 1UF. 7.30pm. £48 / £16. 01202 669925 / bsolive.com.

BSO: 'ORCHESTRAL TITANS'

13 October

Great Hall, University of Exeter, Stocker Road, EXETER, EX4 4PY. 7.30pm. £39 / £15. bsolive.com.

REGIONAL ONE + DAY OF THE RED SUN + MISSING DIGIT

13 October

Lighthouse, 21 Kingland Road, POOLE, BH15 1UG. 7.30pm. 01202 280000 / lighthousepoole.co.uk.

THE MCSWATBRICK EXPERIENCE

14 October

Village Hall, Shortlake Lane, Osmington, WEYMOUTH, DT3 6FT. 7.30pm. £15. 01305 837299. "Guitar legend Robbie McIntosh and multi-instrumentalist Simon Swarbrick perform a broad range of songs and tunes with sublime vocals from Ken and Lucy Watkins."

JEAN TOUSSAINT SEXTET

14 October

Lighthouse, 21 Kingland Road, POOLE, BH15 1UG. 8pm. lighthousepoole.co.uk. Jazz.

FRED'S HOUSE + ANNA RENAE

14 October

Brewhouse Theatre & Arts Centre, Coal Orchard, TAUNTON, TA1 1JL. 8pm. £13. thebrewhouse.net.

BSO: 'LARK ASCENDING'

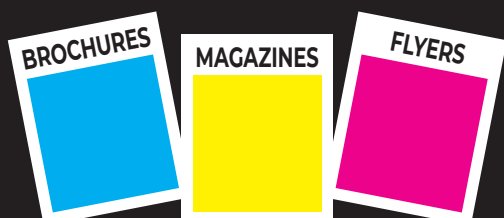
15 October

St Mary's Church, Church Lane STURMINSTER NEWTON, DT10 1DG. 7.30pm. £15 / £2. bschoir.org.uk.

BOURNEMOUTH SYMPHONY ORCHESTRA

19 October

Lighthouse, 21 Kingland Road, POOLE, BH15 1UF. 7.30pm. £48 / £16. 01202 669925 / bsolive.com.



((acoustic))
DISTRIBUTION

We deliver any marketing material

Call Will on 07397 853006

acousticdistribution@btinternet.com

acousticdistribution.co.uk

Subscribe to
EVOLVER MAGAZINE
online at
evolver.org.uk

Six bi-monthly issues for £25





take art

Take Art Rural Touring

Extraordinary Performances
in Ordinary Places

Find Take Art shows on the listings pages!

EVOLVER MAGAZINE

DEADLINE FOR NEXT ISSUE

November and December 2022

FRIDAY 7 OCTOBER

Tincleton Gallery

music and contemporary fine art in Dorset

Autumn 2022 Concert Series

Friday 16 and Saturday 17 September
Jazz with David Gordon et al. On Friday with
legendary John Law and on Saturday with young
gun Gabriel Margolis: *"the selection of a genius"*

Friday 21 and Saturday 22 October
Australian pianist Rosemary Tuck comes to us for
the first time - Chopin, Ravel, Liszt: *a Critics Choice*
in *Gramophone Magazine*, and a *Steinway artist*

Friday 18 and Saturday 19 November
Jazz with John Law and saxophonists - Jon Lloyd
and Iain Ballamy alternate evenings: *"One of the
UK's most imaginative and versatile jazz pianists"*
International Piano Magazine

Friday 9 and Saturday 10 December
Classical piano with local hero Duncan
Honeybourne for a solo Christmas in intimate
Tincleton

01305 848909 • info@tinctongallery.com
£15 • 8pm start

The Old School House, Tincleton, near Dorchester, DT2 8QR
01305 848909
tinctongallery.com



BRIDPORT
ARTSCENTRE

WHAT'S ON

LIVING TREE
EXHIBITION | 6 SEP - 10 SEP
FREE ENTRY | TUE - SAT, 10AM - 4PM

The Living Tree cancer support group are celebrating their 10th anniversary this autumn, with a beautiful exhibition of members' creative work.

SUZI RUFFELL + SUPPORT
COMEDY | SUPPORT ACT TBA
SAT 24 SEP | 8:00PM

GRACE PETRIE
MUSIC
MON 31 OCT | 7:30PM

PRINTED PROGRAMME NOW AVAILABLE!
Pick up your copy at Bridport Arts Centre or Bridport TIC today.

Visit us online at www.bridport-arts.com or call **01308 424901**.
*The Gallery is open Tuesdays – Saturdays, 10am to 4pm. FREE ENTRY.



PEIXOS

By Sarruga

23-24 September 2022
Weymouth Town Centre

Activate Performing Arts are bringing another spectacle to Weymouth this September.

Peixos by Sarruga is a spellbinding parade inside an eery underwater world featuring luminescent sea creatures and gigantic bicycle-powered wizardry.

InsideOut
DORSET

activateperformingarts.org.uk

Presented in partnership with
We Are Weymouth and **Weymouth Town Council**

Dorset Council

WE ARE WEYMOUTH **WEYMOUTH TOWN COUNCIL** **ARTS COUNCIL ENGLAND**



THE **RPS**
ROYAL
PHOTOGRAPHIC
SOCIETY

Begin your Photography Journey with the RPS

At the RPS, we want everyone to enjoy photography irrespective of your age or technical ability. Whether you use a smartphone camera, or have an arsenal of sophisticated equipment, we can help you develop your practical and creative photography skills.

The RPS will support you on your journey through courses, workshops, talks and opportunities. From basic skills to our acclaimed Distinctions qualifications, we will help you take your photography forwards at every stage.

Open to beginners, established professionals and everyone in between.

Learn more: rps.org/join

#PhotographyforEveryone #MyPhotographyJourney

- Connect with regional hubs, international forums and our new RPS Pathways group
- Join one of our specialist groups to focus your interests and take part in competitions, workshops, exhibitions, field trips and residencies
- Be the first to hear about our awards, bursaries, industry discounts and exhibition opportunities
- Receive our award-winning bimonthly RPS Journal magazine

Join today:
rps.org/join

© Honey J Walker ARPS

Music



Ladysmith Black Mambazo

"Since they shot to global stardom on Paul Simon's *Graceland* album, Mambazo have been recognised as one of the world's great vocal groups and their powerful, uplifting songs prompted Nelson Mandela to call them 'South Africa's cultural ambassadors'. Founded in 1960 by Joseph Shabalala, over the years they have collaborated with a host of stars including Dolly Parton, Josh Groban and Emmylou Harris. The group appeared in the Michael Jackson film *Moonwalker* and in 1993 accompanied Nelson Mandela to his Nobel Peace Prize ceremony in Oslo. Shabalala retired from Ladysmith Black Mambazo in 2014 and passed away in 2020, but four of his sons perform in the current line-up. The group have been nominated for 17 Grammy awards, winning five, most recently for best world music album in 2017. Touring again to celebrate Black History Month, their special guest is Cameroon-born guitarist and singer Muntu Valdo, an electrifying presence who combines loops with the blues."

12 October: Lighthouse, 21 Kingland Road, POOLE, BH15 1UG. 7.45pm. 01202 280000 / lighthousepoole.co.uk.

ADRIEN BRANDEIS

19 October

Pound Arts Centre, Pound Pill, CORSHAM, SN13 9HX. 1pm. £8. poundarts.org.uk. *Piano recital.*

CHRIS WHILE & JULIE MATTHEWS

20 October

Pound Arts Centre, Pound Pill, CORSHAM, SN13 9HX. 7.30pm. £12 / £10. poundarts.org.uk.

THE GOUDIES

20 October

Lighthouse, 21 Kingland Road, POOLE, BH15 1UG. 8pm. 01202 280000 / lighthousepoole.co.uk. "Husband-and-wife folk-country duo Sam and Beth Goudie explore the relationship of love, faith and the spaces in between."

LADY NADE

21 October

Pound Arts Centre, Pound Pill, CORSHAM, SN13 9HX. 7.30pm. £12 / £10. poundarts.org.uk.

HANNAH MOULE & THE MOULETTES

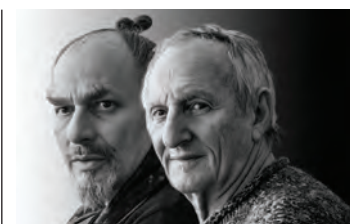
21 October

Brewhouse Theatre & Arts Centre, Coal Orchard, TAUNTON, TA1 1JL. 7.45pm. £15. thebrewhouse.net.

ROSEMARY TUCK

21 and 22 October

Tincleton Gallery, The Old School House, TINCLETON, near Dorchester, DT2 8QR. 7.30pm. £15. tinctongallery.com. *Piano recital.*



RICKY ROMAIN AND ANDREW GOLDBERG

22 October

Eype Centre For the Arts, St Peter's Church, EYPE, Bridport, DT6 6AR. 7.30pm. £15. goldbergromain.co.uk. "Sitar and piano recital."

BOURNEMOUTH SYMPHONY ORCHESTRA

26 October

Lighthouse, 21 Kingland Road, POOLE, BH15 1UF. 7.30pm. £48 / £16. 01202 669925 / bsolve.com.

TOM ROBINSON

28 October

Pound Arts Centre, Pound Pill, CORSHAM, SN13 9HX. 7.30pm. £20. 01249 701628 / poundarts.org.uk.

THE THREE DEGREES

29 October

The Exchange, Old Market Hill, STURMINSTER NEWTON, DT10 1FH. 7.30pm. £20. stur-exchange.co.uk.

THE LITTLE UNSAID

29 October

Pound Arts Centre, Pound Pill, CORSHAM, SN13 9HX. 7.30pm. £14. 01249 701628 / poundarts.org.uk.

Performance

September and October 2022



'COLERIDGE UNBOUND'

3 September

Alfoxton Park, HOLFORD, TA5 1SG.
8pm. Free entry. stateoftrust.net.
"Bring a picnic and enjoy an enchanted evening under the stars."



JASON MANFORD

10 September

Lighthouse, 21 Kingland Road,
POOLE, BH15 1UG. 7.30pm. 01202
280000 / lighthousepoole.co.uk.
Comedy.

CHARLIE BAKER + WAYNE THE WEIRD + PAUL COX

10 September

Lighthouse, 21 Kingland Road,
POOLE, BH15 1UG. 8pm. 01202
280000 / lighthousepoole.co.uk.
Comedy.

KIRI PRITCHARD-MCLEAN

11 September

Corn Exchange, High East Street,
DORCHESTER, DT1 1HF. 7.30pm. £16
/ £14. 01305 266926 /
dorchesterarts.org.uk. Comedy.

JOHNNY BALL: 'WONDERS BEYOND NUMBERS'

14 September

Lighthouse, 21 Kingland Road,
POOLE, BH15 1UG. 7.45pm. 01202
280000 / lighthousepoole.co.uk.



Scratchworks Theatre Company: Hags

"In Bideford in 1682, the final witch trial in Britain took place. Three women were accused of witchcraft, tried and hanged. Now fast forward to the present day and name one female magician... pretty tricky. But tonight, three fearless females are climbing out of their boxes, shaking off the sequins and investigating what really happened in a small town in North Devon 300 years ago. Packed full of magic tricks, physical comedy and live music, our magiciennes explore the witch-hunt mania that swept the country and sent hundreds of innocent women to the gallows. With mind-blowing illusions, stupendous stunts and the occasional disappearing rabbit, *Hags* sets the record straight for thousands of falsely accused women with all the joy, silliness and spectacle these three can muster."

27 October: Pound Arts Centre, Pound Pill, CORSHAM, SN13 9HX. 7.30pm. £12 / £10. 01249 701628 / poundarts.org.uk.

BUDLEIGH SALTERTON LITERARY FESTIVAL

14 - 18 September

Various locations, town centre,
BUDLEIGH SALTERTON, EX9. 10am -
7.30pm. £10 / £1. 0333 666 3366 /
budlitfest.org.uk.

ANIMIKII THEATRE: 'THE KASPAR HAUSER EXPERIMENT'

16 September

Pound Arts Centre, Pound Pill,
CORSHAM, SN13 9HX. 7.30pm. £13 /
£11. 01249 701628 /
poundarts.org.uk.

WIVELISCOMBE LITERARY FESTIVAL

16 - 18 September

Wiveliscombe Community Centre,
WIVELISCOMBE, TA4 2JP.
wivelitfest.co.uk. "Wiveliscombe's
first ever Literary Festival."



YEOVIL SUPER SATURDAY

YEOVIL TOWN CENTRE
17 September 2022

FOOD AND DRINK • BUSKFEST
COMMUNITY STALLS • BUGFEST
AND LOTS MORE!

facebook.com/yeovilsupersaturday





CLAUDIA ANTONIUS AND JÖRG JOZWIAK 'TYROLIA MUNDUS' (2022)



BABAR SULEMAN



EMILY TRACEY



CAITLIN AKERS

B-Side Festival

"Leading arts festival B-SIDE is back on the Isle of Portland, Dorset, this September. Celebrating the unique island with the driving theme of 'Common Lands', b-side will invite guests to explore their relationship with the land. Taking place across four days between 8th and 11th September, Portland will host both local and international artists who will take festival-goers on an experimental tour around this distinctive part of the UK, exploring its history through their creative visions. This year's theme will encourage visitors to consider a range of connections to the land, including migratory, LGBTQ+ and environmental relationships. Attendees will be invited to reflect on their own experiences and to consider those of others, including how the land can become more inclusive to minority communities, its migratory history and the importance of preserving Portland's unique ecology for future generations."

8 - 11 September: Various locations on PORTLAND, Dorset. b-side.org.uk.



JASMIN VARDIMON COMPANY: 'ALICE'

17 September

Lighthouse, 21 Kingland Road, POOLE, BH15 1UG. 7.45pm. 01202 280000 / lighthousepoole.co.uk. "Award-winning choreographer Jasmin Vardimon's newest creation is a re-imagining of the ground-breaking classic Alice in Wonderland, and promises a sensory feast of arresting images, powerful performers and striking kinetic scenery."



LIVING SPIT: 'ADOLF AND WINSTON'

28 September

Corn Exchange, High East Street, DORCHESTER, DT1 1HF. 7.30pm. £15 / £13. 01305 266926 / dorchesterarts.org.uk. "Living Spit's Howard and Stu are back walking the tightrope of taste and decency with another slice of poorly-researched history. But will either of them escape from this war alive?"

LIVING SPIT: 'ADOLF AND WINSTON'

29 September

Pound Arts Centre, Pound Pill, CORSHAM, SN13 9HX. 7.30pm. £14 / £12. 01249 701628 / poundarts.org.uk. See 28 September.



EVOLVER MAGAZINE FREE LISTINGS

Exhibition and performance listings should be emailed to listings@evolver.org.uk

Please send ALL information in the following order:

Event, date(s), venue, address (including postcode), times, admission fee (if any), contact number / website, up to 30 words about your event



Performance

JEN BRISTER: 'THE OPTIMIST'

30 September

Pound Arts Centre, Pound Pill,
CORSHAM, SN13 9HX. 8pm. £12 /
£10. 01249 701628 /
poundarts.org.uk.



DAVID EAGLE: 'FLYING SOLO'

30 September

Village Hall, WOOTTON
COURTENAY, TA24 8RH. 7.30pm.
£10 / £7. 01643 841067 / takeart.org.
"Multi award winning comedian
David Eagle comes to Somerset to
split the sides of audiences with his
well-crafted stand up and comedy
songs; investigating topics from
blindness to Satanism!"

LIVING SPIT: 'ADOLF AND WINSTON'

1 October

The Exchange, Old Market Hill,
STURMINSTER NEWTON, DT10 1FH.
01258 475137 / stur-exchange.co.uk.
See 28 September.

DAVID EAGLE: 'FLYING SOLO'

1 October

Bruton Club, BRUTON, BA10 0HQ.
7.30pm. £10 / £7. 01749 813694 /
takeart.org. See 30 September.

PAULA VOGEL: 'HOW I LEARNED TO DRIVE'

5 - 8 October

Rondo Theatre, BATH, BA1 6RT.
7pm. £12 / £10. 0333 666 3366 /
rondothatre.co.uk. "This dark,
funny, and insightful Pulitzer Prize-
winning play explores the uneasy
relationship between an older man
and an adolescent girl navigating
loyalty, family, sexuality, love, and
her sense of right and wrong."



Peixos

"Activate Performing Arts - producers of *Inside Out Dorset* festival - are bringing another spectacle to Weymouth with *Peixos*, a spellbinding parade inside an eerie underwater world featuring luminescent sea creatures and gigantic bicycle-powered wizardry. Find yourself immersed in an exotic underwater world where colourful aquatic creatures swim among the crowd. Marvel at schools of darting tropical fish and watch the luminescent jellyfish dancing above your head as you follow this watery procession accompanied by music and light. The colourful parade will take you through the streets of Weymouth. Since 1994, Barcelona-based artists Sarruga have perfected making their giant creatures from ingenious bicycle-powered mechanisms which are pedalled along to create an amazing processional spectacle."

23 and 24 September: Town centre, WEYMOUTH. 7.30pm.
activateperformingarts.org.uk.

THE HANDLEBARDS: 'TWELFTH NIGHT'

6 and 7 October

Lighthouse, 21 Kingland Road,
POOLE, BH15 1UG. 8pm. 01202
280000. "The hugely popular
Shakespearean troupe are back
with another bicycle-powered tour
to reprise their hit production of

*Shakespeare's classic comedy with
drunkenness, frivolity and cross-
dressing aplenty."*

DAVID EAGLE: 'FLYING SOLO'

7 October

Village Hall, HATCH BEAUCHAMP,
TA3 6SG. 7.30pm. £11 / £7. 01823
481909. See 30 September.

'THE THREE MUSKETEERS'

7 and 8 October

Lighthouse, 21 Kingland Road,
POOLE, BH15 1UG. 7.45pm
(Saturday matinee 2.30pm). 01202
280000 / lighthousepoole.co.uk.

NATHAN CATON + LINDA LARKIN + MATT PRICE

8 October

Lighthouse, 21 Kingland Road,
POOLE, BH15 1UG. 8pm. 01202
280000 / lighthousepoole.co.uk.
Comedy.



'YUKON HO!'

8 October

Bridport Arts Centre, 9 South Street,
BRIDPORT, DT6 3NR. 7.30pm. 01308
424204 / bridport-arts.com. "A
funny, bizarre, dark and (mostly)
true, one-woman, cabaret-style
guide to surviving an unbelievably
mad life in Canada's frozen north."

JOANNE MCNALLY: 'THE PROSECCO EXPRESS'

9 October

Lighthouse, 21 Kingland Road,
POOLE, BH15 1UG. 8pm. 01202
280000 / lighthousepoole.co.uk.
Comedy.

'AROUND THE MIND IN 80 DAYS'

10 October

Bridport Arts Centre, 9 South Street,
BRIDPORT, DT6 3NR. 7pm. 01308
424204 / bridport-arts.com. "Real
life stories, created and performed
by those with lived experience of
mental illness."

ENGLISH TOURING OPERA: 'OTTONE'

14 October

Lighthouse, 21 Kingland Road,
POOLE, BH15 1UG. 7.30pm. 01202
280000 / lighthousepoole.co.uk.



Shaftesbury Arts Centre



The Phantom of the Open

Film

3 and 20 September



The Bootleg Shadows

Live performance
10 September



West Side Story

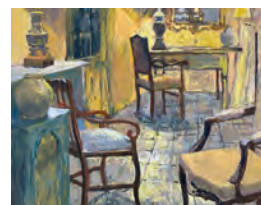
Film

30 September



Wessex Painters

Gallery exhibition
7 - 13 September



Carolyn Moran

Gallery exhibition
19 - 25 September

11 - 13 Bell Street Shaftesbury, Dorset SP7 8AR    01747 854321 • shaftesburyartscentre.org.uk



LIVIA KOJO ALOUR: 'BLACK SHEEP'

14 October

Bridport Arts Centre, 9 South Street, BRIDPORT, DT6 3NR. 7.30pm. 01308 424204 / bridport-arts.com. *"Fusing physical theatre, spoken word, song and sword swallowing, the show is the story of a queer black woman finding love, overcoming institutional racism and leaning into radical vulnerability."*

GONZO MOOSE: 'IS THAT A BOLT IN YOUR NECK?'

14 and 15 October

Pound Arts Centre, Pound Pill, CORSHAM, SN13 9HX. 7.30pm. £14 / £12. 01249 701628 / poundarts.org.uk.

ENGLISH TOURING OPERA: 'TAMERLANO'

15 October

Lighthouse, 21 Kingland Road, POOLE, BH15 1UG. 7.30pm. 01202 280000 / lighthousepoole.co.uk. *"The most perfect of Handel's operas, and a true marriage of drama and music."*

'THE COMEDY OF ERRORS'

15 October

Merlin Theatre, FROME, BA11 2HG. 7.30pm. £14. *"Shakespeare's sparkling farce is a rollercoaster of wit, romance, comedy and mistaken identities, as two sets of twins cause mayhem when their lives and loves become almost inextricably tangled."*



Wells Festival of Literature

"Wells Festival of Literature celebrates its 30th anniversary this autumn with a lively line-up of well-known authors to mark its growing success across three decades in the city. Bookended by two popular writers, the festival opens with star of stage and screen Sheila Hancock taking a humorous look at growing old in her pithy new memoir *Old Rage*. In a very different vein historical fiction writer Robert Harris closes with *Act of Oblivion*, an exciting manhunt for the killers of Charles I. In between, headline speakers include BBC Radio 4's *Inside Science* presenter Gaia Vince on climate change, and Radio 4 Today presenter Justin Webb with a moving memoir of his childhood in Bath. Other big names include broadcaster Michael Crick, children's author Michael Morpurgo, and campaigner Kate Humble (presenter of TV's *Animal Park* and *Springwatch*, above), the latter serving up a feast of her seasonal recipe ideas at one of the festival's popular literary lunches."

14 - 22 October: Various locations in WELLS, Somerset. 01749 834483 / wellsfestivalofliterature.org.uk.

'THE COMEDY OF ERRORS'

16 October

Town Hall, CORSHAM, SN11 0EZ. 7.30pm. £14. 07780 938107. shakespearelive.com. See 15 October.

'YOUR HEART IS TOO LOUD'

19 October

Brewhouse Theatre & Arts Centre, Coal Orchard, TAUNTON, TA1 1JL. 7.30pm. £13. 01823 283244 / thebrewhouse.net. *Dance.*

'THE COMEDY OF ERRORS'

19 and 20 October

The Mission Theatre, 32 Corn Street, BATH, BA1 1UF. 7.30pm. £14. 07780 938107. shakespearelive.com. See 15 October.

'PIRATES OF PENZANCE'

20 - 22 October

Lighthouse, 21 Kingland Road, POOLE, BH15 1UG. 7.30pm (Saturday matinee 2.30pm). 01202 280000 / lighthousepoole.co.uk.

JESSICA FOSTEKUW: 'WENCH'

22 October

Pound Arts Centre, Pound Pill, CORSHAM, SN13 9HX. 7.30pm. £14 / £12. 01249 701628 / poundarts.org.uk.

'THE COMEDY OF ERRORS'

22 October

The Cause, The Causeway, CHIPPENHAM, SN15 3DD. 7.30pm. £14. 07780 938107. shakespearelive.com. See 15 October.

'CRIMES ON CENTRE COURT'

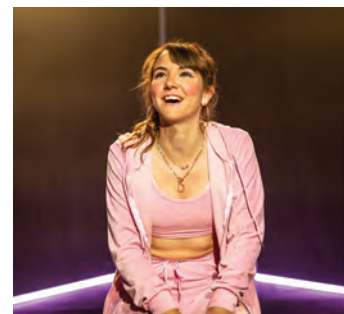
25 October

Lighthouse, 21 Kingland Road, POOLE, BH15 1UG. 7.45pm. 01202 280000 / lighthousepoole.co.uk.

'BLACK IS THE COLOR OF MY VOICE'

27 October

Lighthouse, 21 Kingland Road, POOLE, BH15 1UG. 8pm. 01202 280000 / lighthousepoole.co.uk. *"Apphia Campbell's acclaimed play, inspired by the life of Nina Simone."*



FLORENCE ESPEUT-NICKLESS: 'DESTINY'

27 October

Village Hall, CROSCOMBE, BA5 3RJ. 7pm. £12 / £8. 07771 814270 / takeart.org. *"Destiny dreams big. She dreams glamour. If J-Lo can make it out of the Bronx, then Destiny can make it off the Hill Rise estate in Chippenham. A beautifully written and wonderfully performed solo show: a must-see!"*

ROB AUTON: 'THE CROWD SHOW'

29 October

Lighthouse, 21 Kingland Road, POOLE, BH15 1UG. 8pm. lighthousepoole.co.uk. *Comedy.*



Gilding and Frame Finishing for Artists - 2 Day Workshop

In just two days, get everything you need to be in a position to gild and finish your own frames. Tutored by Hope Elletson, founder of PictureFrames.co.uk, the *Condensed Two Day Workshop* will give you hands-on experience in every task in Water Gilding, and in a range of other Professional Frame Finishing techniques.

The next course runs on the 9th and 10th of November at the Slade Centre in Gillingham.

Lunch and unlimited coffee will be provided on both days.

For more info <https://pictureframes.co.uk/workshops/>



Recruiting - Arts Centre Manager

Established in 1957, **Shaftesbury Arts Centre** is now recognised as one of the best volunteer membership-led arts centres in South West England. The Centre includes a 157-seat, fully equipped theatre, associated multi-use rooms and a dance studio, as well as a popular professional gallery. We have a popular and varied year-round programme of amateur and professional plays, films, art, photography and craft exhibitions, workshops, and training courses.

This successful and growing programme means we are now seeking to recruit an **Arts Centre Manager**. This role could include:

- Coordinating the bookings calendar and helping develop the programme of artistic events at the Centre
- Coordinating volunteer activities, including recruitment, induction, rotas and training records
- Dealing with enquiries from the public
- Ensuring that the Centre meets the requirements of current legislation, such as health and safety and licensing laws and safeguarding children arrangements
- Coordinating the Centre's publicity and marketing activities
- Developing partnerships with local businesses, educational organisations, and the community to encourage engagement in artistic activities
- Helping develop the Centre as a community and cultural hub for Shaftesbury

If you have experience in the arts and / or theatre sector, preferably working with volunteers and with excellent communication and organisational skills, then we would be keen to hear from you.

For full details of the role and application procedure, please visit our website at shaftesburyartscentre.org.uk/jobs



11 - 13 Bell Street, Shaftesbury, Dorset SP7 8AR

Charity number: 1109836

CICCIC, MEMORIAL HALL, PAUL ST,
TAUNTON, SOMERSET, TA1 3PF

somerset
arts business

**cultural
ALLIANCE**

THE FUTURE OF ARTS & CULTURE IN SOMERSET

CONFERENCE 2022

REGISTER NOW!
WWW.SOMERSETCULTURE.ORG.UK
FOR ONLINE OR IN-PERSON OPTIONS

OUR SPEAKERS

Includes Somerset Arts Business Cultural Alliance directors Andrew Knutt & Richard Holt, plus Somerset Council elected member, The Fifth Sector and...

HARMAN SAGGER
Head Economist, DCMS

DR JOHN WRIGHT
Centre for Cultural Value

DR INGE HILL
Royal Agricultural University
Creative Industries Research

PIPPA JONES
Development Director
Create Gloucestershire

**TUESDAY
11TH OCT**

**£12
FOR ENTRY**

**STARTS AT
9.30AM**

WELCOME TO OUR CONFERENCE

The most up-to-date thinking on the arts & culture industry in Somerset & the wider national picture. Held in Taunton & online.

EVENT SUPPORTED BY

SOMERSET
County Council

UK Government

ciccic

creative
innovation
centre

ARTCETERA

EST . 1970

Picture Framing & Artists Materials

01202 423408 artcetera853@gmail.com 853 Christchurch Road BH7 6AR

Festival of Literature

WELLS 30 Anniversary

BOOKING NOW OPEN...

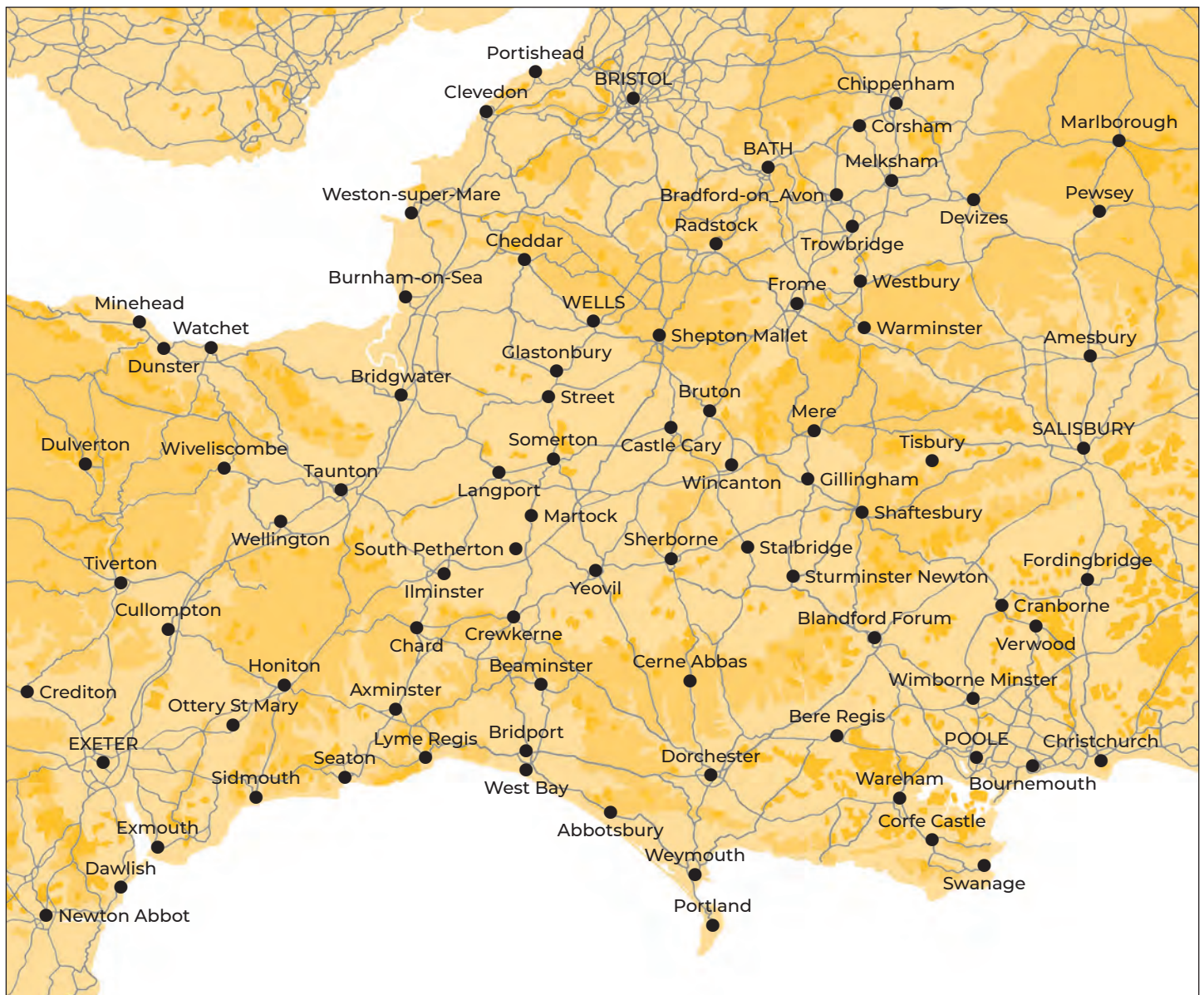
Sheila Hancock Jeremy Bowen Janina Ramirez
Gaia Vince Michael Crick Max Hastings
Emma Smith Paterson Joseph Justin Webb
Michael Morpurgo Claire Fuller Lucy Cooke
Melvyn Bragg William Sieghart Stephen Walsh
Frances Spalding Robert Harris
and many more...

14 – 22 October 2022

www.wellsfestivalofliterature.org.uk
Booking telephone line is 01749 834483
(9.30 am to 12.30 pm)

EVOLVER MAGAZINE

WESSEX



Follow **EVOLVER** MAGAZINE on Instagram

evolvermagazine



EVOLVER MAGAZINE

THE WESSEX ARTS AND CULTURE GUIDE

Editor SIMON BARBER

Assisted by SUZY RUSHBROOK

Evolver Writer

FIONA ROBINSON fionarobinson.com

Graphic Design SIMON BARBER

Website TOR NEW MEDIA tornewmedia.co.uk

Front Cover SCRATCHWORKS 'HAGS'

Photograph by Matt Austin

EVOLVER MEDIA

8 BUCKLAND ROAD, PEN MILL TRADING ESTATE,
YEovil, SOMERSET BA21 5EA

Email simon@evolver.org.uk



Telephone 01935 808441

Website evolver.org.uk

Instagram [evolvermagazine](https://www.instagram.com/evolvermagazine)

Twitter @SimonEvolver

Published by EVOLVER MEDIA LIMITED

Pre-Press by FLAYDEMOUSE
01935 479453 / flaydemouse.com

Printed by STEPHENS & GEORGE
stephensandgeorge.co.uk

Distributed by ACOUSTIC
07397 853006 / acousticdistribution.co.uk

DEADLINE FOR EVOLVER MAGAZINE 128

November and December 2022

FRIDAY 7 OCTOBER

Outlets and Sponsors

EVOLVER MAGAZINE is available **FREE** at the following Wessex outlets:

ABBOTSBURY: Abbotsbury Studio, Dancel Gallery. AXMINSTER: Archway Bookshop, Axminster Arts Café, Sublyme Café. BATH: Bath Artists' Studios, Beaux Arts, The Bell Inn, The Edge / ICIA, Holburne Museum of Art, Michael Tippett Centre, University of Bath, Victoria Art Gallery. BEAMINSTER: Little Toller Books. BLANDFORD: Blandford Fashion Museum, Bryanston Arts Centre, Forum Café, Forum Framers. BOSCOMBE: Artcetera. BOURNEMOUTH: All Fired Up, Miramar Hotel, Pavilion Dance, Royal Bath Hotel, Russell-Cotes Museum & Art Gallery. BOWER HINTON: The Hollies Hotel. BRADFORD ON AVON: Wiltshire Music Centre. BRIDGWATER: Bridgwater Arts Centre, Clayhill Arts, Engine Room. BRIDPORT: Beach & Barnicott, Bridport Arts Centre, Bridport Old Books, The Bull Hotel, Clocktower Music, Literary and Scientific Institute, Lyric Theatre. BRISTOL: Arnolfini, Bocabar, The Bristol Artisan, Bristol Beacon, Bristol Fine Art, Centrespace, Clifton Fine Art, Create Centre, Folk House, Jamaica Street Artists, Lime Tree Gallery, Bristol Old Vic, PRSC Gallery, RWA, Spike Island, St George's, Tobacco Factory, Trinity Centre, UWE, Watershed. BROADWINDSOR: Redlands Yard. BRUTON: At The Chapel, Hauser and Wirth. BUDLEIGH SALTERTON: Brook Gallery. BURNHAM ON SEA: Princess Theatre & Arts Centre, Seabreeze Gallery. CASTLE CARY: Bailey Hill Bookshop, David Simon Gallery, Trowbridge Gallery. CHARD: Art Café, Barleymow's, Hornsbury Mill Hotel. CHARLTON: Glebe Gallery. CHARMINSTER: Flux Art Supplies. CHEDDAR: Cheddar Art School, Sketch Café. CHEDDON FITZPAINE: Hestercombe Gallery. CHESIL BEACH: Fine Foundation Centre. CHIPPENHAM: Chippenham Museum. CHRISTCHURCH: Hatch Gallery, Hayloft Gallery, Red House Museum, Regent Centre. CLEVEDON: Fizz Gallery, Studio 3. CORFE CASTLE: Boilerhouse Gallery, Gallery 41, Morton House Hotel, Village Stores. CORSHAM: Pound Arts. CREWKERNE: Art4All / ArtyCrafty. CROCKERTON: Bull Mill Arts. CROWCOMBE: Halsway Manor. CULLOMPTON: Cullompton Community College. CULMSTOCK: The Strand Stores. DEVIZES: Wiltshire Museum. DORCHESTER: Dorchester Arts, Duke's, Frank Herring & Sons, Gallery on The Square, The Little Keep, Vinyl Van. EAST LAMBROOK: East Lambrook Manor Gardens. EXETER: Academy of Music, Barnfield Theatre, The Cavern, Corn Exchange, Exeter School of Art, Glorious Art Cafe, Phoenix Arts Centre, Royal Albert Memorial Museum, Southgate Gallery. FROME: Bat Print Studio,

Black Swan Arts, Cheese and Grain, Fiat Lux, Merlin Theatre, Mount, Raves From The Grave, Rook Lane Arts, Rise Centre, Whittox Gallery. GILLINGHAM: The Idea Works, Slade Centre. GLASTONBURY: Abbey Muse Gallery, Bocabar, Facets Of Avalon, Glastonbury Galleries, Heart Of The Tribe Gallery, Red Brick Building, Rural Life Museum. HEMYOCK: Healthy Living Centre. HESTERCOMBE: Hestercombe Gallery. HIGHCLIFFE: In The Frame. HOLTON HEATH: Holton Lee. HONITON: The Beehive, Boston Tea Party, Hybrid Gallery, School Of Art And Wellbeing, Strummer Pink, Thelma Hulbert Gallery. ILMINSTER: Courtyard Gallery Cafe, Dillington House, Ilminster Arts Centre. KEYNSHAM: Chocolate Quarter. LANGPORT: 4 Every Cloud, Art Tea Zen, Hanging Gallery, Shakspeare Glass. LYME REGIS: Blue Lias, Coombe Street Gallery, Fine Art Framing, Marine Theatre, Studio 19. LYTCHETT MINSTER: Barn Cafe, Courtyard Craft Centre. MARLBOROUGH: Framemakers, Rabley Contemporary Drawing Centre. MARTOCK: Martock Gallery Yandles Cafe. MILTON ABBAS: Dorset Crafty Barn, Luccombe Hub. MINEHEAD: Courtyard Framing, Leo Davey Gallery, Regal Theatre. MORCOMBELAKE: Artwave West. MUCHELNEY: John Leach Gallery. NEW MILTON: Forest Arts. NEWTOWN: R. C Arts. NORTH CURRY: Community Café. OTTERTON: Otterton Mill. PENN HILL: Josephine Wall Shop. PEWSEY: McNeill Gallery. POOLE: Arts University Bournemouth, Boiler Room Records, Bournemouth University Atrium Gallery, Guildhall Gallery, Lighthouse, Gallery Upstairs, Originals, Poole Museum, Poole Violins, Towngate Gallery And Framing. PORLOCK: Churchgate Gallery, Melody Art. PORTLAND: B-Side Outpost, White Stones. POUNDBURY: Gallery On The Square, Store 6. SALISBURY: City Hall, Fisherton Mill, Framemakers, Noble Art Supplies, Salisbury Arts Centre, Salisbury Museum, Salisbury Playhouse, Studio 53, Wiltshire Gallery, Young Gallery. SEATON: Arts Café, Savooni Art Gallery. SEAVINGTON: Village Shop. SHAFTESBURY: The Cygnet, Grosvenor Hotel, Pictureframes, Shaftesbury Arts Centre. SHEPTON MALLETT: One Craft Gallery. SHERBORNE: Artslink, Elementum Gallery, New Digby Hall, Old Barn Framing Gallery, Winstone's. SIDMOUTH: East Devon Art Academy, Flo and Us, Kennaway House, Winstone's. SOMERTON: ACE Arts, Gifted Company & Gallery Coffee Shop. SOUTH CADBURY: Chapel Cross Tea Rooms. SOUTH PETHERTON: David Hall. STALBRIDGE: Dike & Sons. STOBOROUGH: Furzebrook Studios. STOKE ST GREGORY: Willow & Wetlands Centre. STOURHEAD: First View Gallery. STREET: Millfield

School Atkinson Gallery, Strode Theatre. STURMINSTER NEWTON: The Exchange, Poet's Corner, Wessex Photographic. SWANAGE: 4Matt Framers and Gallery, Durlston Castle, Hollinghead Studio Gallery, L'Artishe Gallery, Mowlem Theatre, Mulberry Bush Gallery, Purbeck New Wave Gallery, Quarr Gallery, Sansom Gallery. SYMONDSBURY: Sou'-Sou'-West. TAUNTON: Brewhouse Theatre, CIC CIC, Fine Art And Framing, Jane Amour, Mount Somerset Hotel, Quantock Art And Framing, Queen's College, Tacchi-Morris Arts Centre, University Centre Somerset. TINCLETON: Tincleton Gallery. TISBURY: Messums Wiltshire. TIVERTON: Lantic Gallery. TROWBRIDGE: Arc Theatre, Court Street Gallery, Drawing Projects, The Lamb, Trowbridge Arts, Trowbridge Museum. VERWOOD: Campbell & Rose Gallery, The Hub. WAREHAM: Creative Gallery, Priory Hotel, Rex Cinema. WATCHET: East Quay, Watchet Gallery. WELLINGTON: Old Brick Workshop. WELLS: A2 Gallery, Andelli Art, Bishop's Eye, Good Earth, Heritage Courtyard Studios, Somerset Guild of Craftsmen Gallery and Shop. WEST BAY: Sladers Yard. WEST COKER: Lanes, Old School Room. WESTHAY: Somerset Crafts. WESTON-SUPER-MARE: Frame Station, Playhouse, Weston College. WEYMOUTH: Weymouth College, Weymouth Pavilion. WILLITON: Breeze Art Gallery. WIMBORNE: Allendale House, Square Records, Walford Mill Craft Centre. WINSCOMBE: Sidcot Arts Studio. WIVELISCOMBE: Community Office. WOODBURY: Woodbury Studio Gallery. WORTH MATRAVERS: Burngate Stone Centre. WRINGTON: Barleywood Studios. YEOVIL: Octagon Theatre, Yeovil Art Space. YETMINSTER: Old School Gallery.

Plus selected TOURIST INFORMATION CENTRES and LIBRARIES throughout Wessex

EVOLVER SPONSORS

ACE Arts
Acoustic Distribution
Artcetera
Aztec Media
B-Side
Black Swan Arts
Boilerhouse Gallery
Bridport Arts Centre
The Creative Gallery
Dorset Visual Arts
East Quay
Fisherton Mill
Gallery on the Square
Heart of the Tribe Gallery
Lyme Bay Arts
Project Factory
Shaftesbury Arts Centre
The Slade Centre
Sladers Yard
Somerset Art Works
Take Art
Tincleton Gallery
The Vanner Gallery
Wiltshire Creative





Mr. Mellow's
MUSIC

THE CHESTERF!ELDS

NEW MODERN HOMES

New album available Friday 23 September on Mr Mellow's Music

FRIDAY 23 SEPTEMBER: VINYL VAN, DORCHESTER / 7pm / free entry


SATURDAY 24 SEPTEMBER: HMV, YEOVIL / 1pm / free entry

SATURDAY 24 SEPTEMBER: THE LYRIC THEATRE, BRIDPORT / + Jody & The Jerms / 7.30pm / bridportandwestbay.co.uk

MONDAY 10 OCTOBER: THE LOUISIANA, BRISTOL / + The Lovely Basement + The Rhynes / thelouisiana.net

FRIDAY 14 OCTOBER: THE TREE HOUSE, FROME / + Mighty One / cheeseandgrain.com

SATURDAY 15 OCTOBER: THE RAILWAY INN, WINCHESTER / + Mighty One + Dead Authors / railwayinn.pub

 The_Chesterfields