

# EVOLVER MAGAZINE

THE **FREE** WESSEX ARTS AND CULTURE GUIDE



Garry  
Fabian  
Miller

Arnolfini  
18 February  
28 May  
2023

Free Entry  
Tuesday-Sunday  
11am-6pm

16 Narrow Quay  
Bristol BS1 4QA

arnolfini.org.uk  
@arnolfiniarts



ARNOLFINI

ACBMT

[Kingston Studio]



HOLDEN LUNTZ

INGLEBY



# Adore

ALBERTA  
WHITTLE

DIPPING BELOW A WAXING  
MOON, THE DANCE CLAIMS  
US FOR RELEASE

Until 8 May 2023

THE  
HOLBURNE  
MUSEUM

WWW.HOLBURNE.ORG

Generously supported by:

THE MODERN INSTITUTE

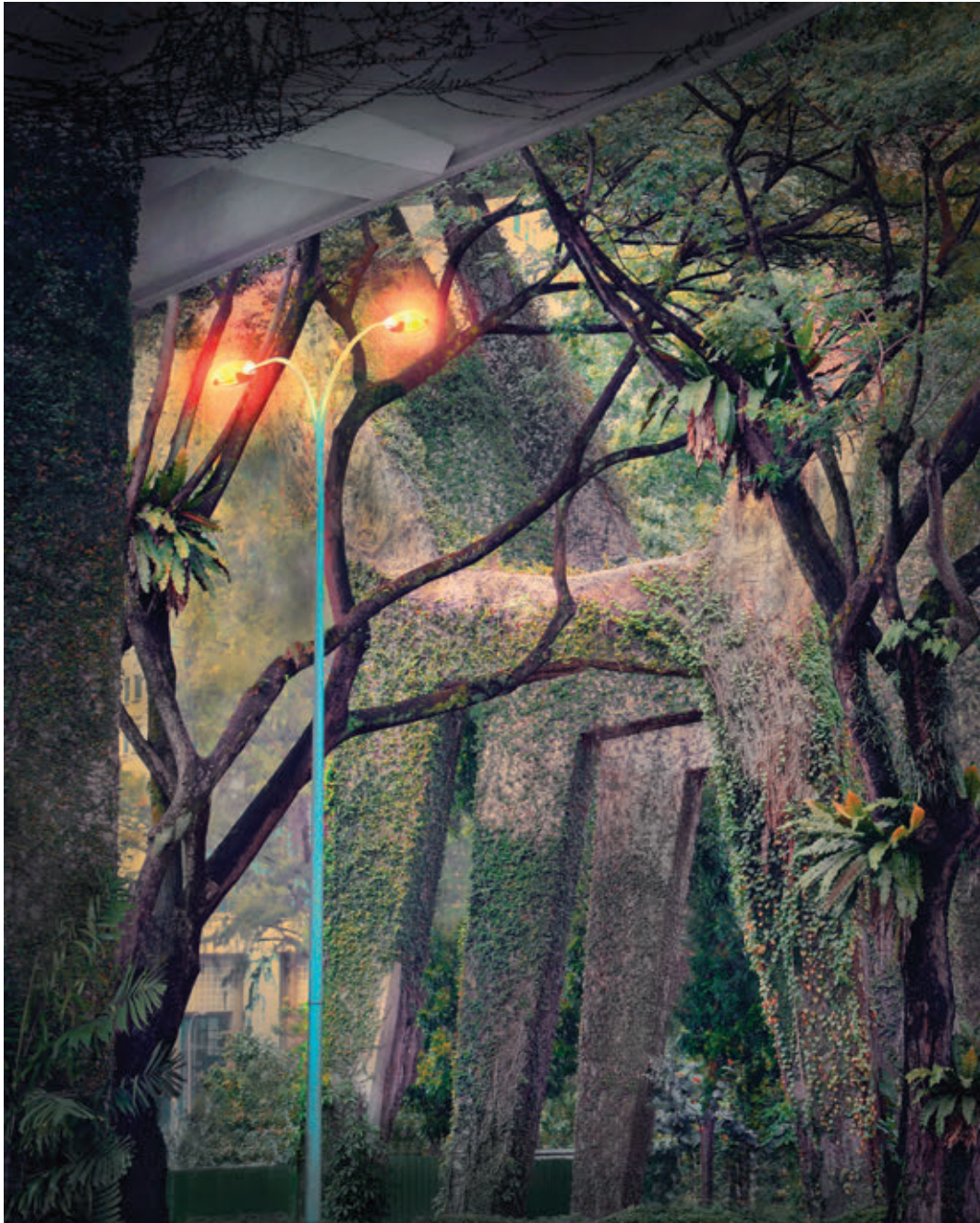


Stuart and Bianca Roden



# EVOLVER MAGAZINE 130

March and April 2023



## Exhibit A

### Barry Cawston: Everybody's Eden

*Photograph*

ARTIST'S STATEMENT: "Everybody's Eden was taken in Singapore and was inspired by a novel called *The Unlimited Dream Company* written by J G Ballard, in which the world is in the process of rewilding with cities being overcome by nature. I thought this was a beautiful and poignant fiction until I walked under the flyover in Singapore and took this metaphorical image. Sometimes it is composition or colour that draws me to take a photograph but many of my strongest pictures tell a story... and this image could easily be the cover for Ballard's fantasy novel. It is one of twenty images that form a gallery series on my website called *Scenes From The Concrete Jungle*, many of which have a surreal or sci-fi element. I also love the fact that it has a very limited colour palette and that it feels like the lights are on to illuminate nature."

#### SEASON OF PHOTOGRAPHY

**Until 1 May**

Royal West of England Academy, Queen's Road, Clifton, BRISTOL, BS8 1PX. 10am - 4pm. £8.

0117 973 5129 / [rwa.org.uk](http://rwa.org.uk).

[barrycawston.com](http://barrycawston.com)



# Headlines

March and April 2023



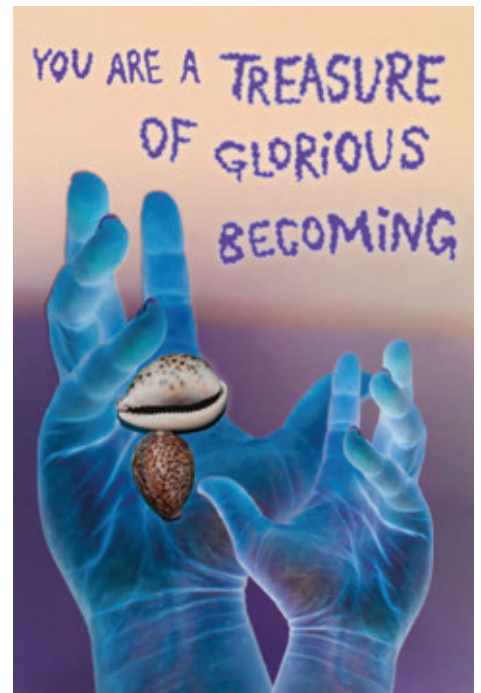
## Od Arts Festival

Od Arts Festival returns this year, from 26 to 28 May, with a packed programme of art and community activity. The festival takes its name from the Od: a crooked stream that meanders through the neighbouring villages of East and West Coker. Led by Coker based OSR Projects, *Od Arts Festival 2023 - Still & Still Moving*, takes its title from TS Eliot's poem *East Coker*, the second of his famous *Four Quartets*.

*Still & Still Moving* will explore responses to human movement through space, both real and imagined. It will offer visitors an exciting range of things to see, do and experience, from walking and way marking, inspired by ancient histories, to digital projections of imagined futures.

Expect intriguing works in unusual locations across the two villages, providing an opportunity to meander and explore at your own pace. Artist Macia Teusink has been co-commissioned by the Festival and Dawe's Twineworks to delve into some of the historical connections that span out from the Coker Canvas industries. Further plans for workshops and events include a community clay project, circle monument making, bookbinding, and a communal lunch. More artists will be announced in the coming weeks. The festival is free and open to all.

[odartsfestival.co.uk](http://odartsfestival.co.uk) / [@odartsfest](https://twitter.com/odartsfest)



'YOU ARE A TREASURE OF GLORIOUS BECOMING'

## Alberta Whittle

Fresh from representing Scotland at the Venice Biennale, Alberta Whittle will present a suite of newly commissioned sculptures across the Holburne Museum's site and grounds, as well as a series of new text-based works across Bath. The exhibition, Whittle's first in a public museum, will continue themes known in her practice including post-colonial healing, pleasure, and hospitality, each manifested through her prism of love, compassion, and kindness

### 'DIPPING BELOW A WAXING MOON, THE DANCE CLAIMS US FOR RELEASE'

**Until 8 May**

Holburne Museum, Great Pulteney Street, BATH, BA2 4DB. Monday - Saturday 10am - 5pm, Sunday and Bank Holidays 11am - 5pm). £12.50. 01225 388588 / [holburne.org](http://holburne.org).



Right: Anita Klein Summer Moon linocut ed.10/50  
Above: Louise Balaam Blowy Day, Across the Water

Silence and Slow Time *until 18 Mar*  
LOUISE BALAAM NEAC RWA  
NICHOLAS JONES  
ALFRED STOCKHAM ARCA RWA  
PETTER SOUTHALL furniture

The Life that Springs *25 Mar - 13 May*  
linocuts, woodcuts, screenprints and etchings by  
Anita Klein RE, Fred Cuming RA,  
John Hubbard, Martyn Brewster ARE,  
Merlyn Chesterman RE, Sally McLaren RE

### SLADERS YARD

Contemporary Art & Craft Gallery West Bay DT6 4EL  
Open Weds - Sat 10am - 4pm tel: 01308 459511  
CAFÉ SLADERS also open Sundays 10am - 3pm  
seafood restaurant [sladersyard.co.uk](http://sladersyard.co.uk) @sladersyard





# Headlines



MARYANNE HAWES 'INSIDE I'LL SING'

## RWA Season of Photography

The Royal West of England Academy (RWA) has launched a major season of photography with several exhibitions and photography-related activities taking place in its recently transformed galleries. Included are a landmark *Photo Open Exhibition* and adjoining exhibition by critically acclaimed Bristol-born landscape photographer Jem Southam.

Jem Southam's *A Bend in The River* is a beautifully observed series of photographs documenting the changes in the environment in a particular spot on a riverbank over a 5-year period, shown alongside artworks by Turner, Constable and others depicting similar scenes.

The *RWA Photo Open* celebrates contemporary photographic practice in all its forms. Over 150 works were selected from hundreds of submissions. The exhibition showcases the sheer quality and range of photographic work being produced by photographers and artists across the UK and abroad today.

**Until 1 May:** RWA, Queen's Road, Clifton, BRISTOL, BS8 1PX. 10am - 5pm. £8 / £4.90. 0117 973 5129 / rwa.org.uk.



## Fenne Lily: Big Picture

Fenne Lily is a Dorset-born, Bristol-based folk singer and songwriter. Her new album, *Big Picture*, is a gripping portrait of Fenne's last two years. Although created amid personal and global turmoil she says it isn't a sad album: "It's about as uplifting as my way of doing things will allow. These songs explore worry and doubt and letting go, but those themes are framed brightly."

While the album was written alone in Fenne's Bristol flat, *Big Picture* was transformed from a solitary venture into a unifying collaboration, during the recording process when she was joined by her touring band.

"2020 was the year of letting go, but we'd all already let go of so much, and nothing felt like mine anymore. Writing always did, though, so that's what I chose to do."

[fenne-lily.com](http://fenne-lily.com)

**FROME ART SOCIETY**  
**Spring into Summer**  
29 April - 14 May  
Preview Fri 28 April 6-8pm

ILES ILLUSTRATION METALWORK TEXTILES ILLUSTRATION METALWORK

ENTRY DIGITAL MEDIA METALWORK PAINTING COLLAGE

MICS JEWELLERY ILLUSTRATION METALWORK

ILES ILLUSTRATION METALWORK PAINTING COLLAGE

ENTRY DIGITAL MEDIA METALWORK PAINTING COLLAGE

MICS JEWELLERY ILLUSTRATION METALWORK

BlackSwanArts

**YOUNG OPEN**  
2023  
The largest young art competition in the South West  
4 March - 16 April 2023

DIGITAL MEDIA METALWORK PAINTING COLLAGE

JEWELLERY ILLUSTRATION METALWORK

ENTRY DIGITAL MEDIA METALWORK PAINTING COLLAGE

MICS JEWELLERY ILLUSTRATION METALWORK

galleries | studios | shop | cafe  
2 Bridge Street, Frome BA11 1BB

 **BLACKSWANARTS**

01373 473980 | [www.blackswanarts.org.uk](http://www.blackswanarts.org.uk)  
**FREE ENTRY** Registered Charity No.292463





## Boilerhouse Gallery

Contemporary art and craft in a wonderful location

MARCH: Weekends and 24th - 31st, 11am - 4pm

APRIL: Tuesday - Sunday, 10am - 5pm

ARTY BAZAAR: Saturday 29 April, 12noon - 4pm



Sandy Hill Lane, Corfe Castle BH20 5JF  
07398 052489 • boilerhousegallery.co.uk



You are warmly invited to come to the ...



## 112<sup>th</sup> Annual Paintings Exhibition

Sat 29<sup>th</sup> April to Sun 7<sup>th</sup> May, 2023

Open every day 10.30am-4.30pm

The Red Lodge, Park Row, Bristol, BS1 5LJ

Entrance in Lodge Street

FREE ENTRY • Artist Members' Paintings for Sale

[www.Bristol1904Arts.org](http://www.Bristol1904Arts.org)



[bristol1904arts](https://www.instagram.com/bristol1904arts)



[facebook.com/BI904A](https://www.facebook.com/BI904A)



[@I904arts](https://twitter.com/I904arts)



[admin@Bristol1904Arts.org](mailto:admin@Bristol1904Arts.org)



## GALLERY ON THE SQUARE Dorchester

25 March to 3 May



**TERESA  
LAWTON**  
New Paintings

Queen Mother Square, Poundbury, Dorchester DT1 3BL

Open daily, 9.30am to 5pm; Sundays 10am to 4pm

[www.gallerypoundbury.co.uk](http://www.gallerypoundbury.co.uk)

## Tincleton Gallery

*contemporary fine art in Dorset*

Spring exhibition

gallery & guest artists

Fri 10 February - Fri 21 July



"Blackbird and Fruit" mixed media by Imogen Bittner

The Old School House, Tincleton, near Dorchester, DT2 8QR

Friday / Saturday / Sunday / Monday • 10am - 5pm

01305 848909 • [tincletongallery.com](http://tincletongallery.com)

## Headlines



WILDWORKS

## B-Side Festival

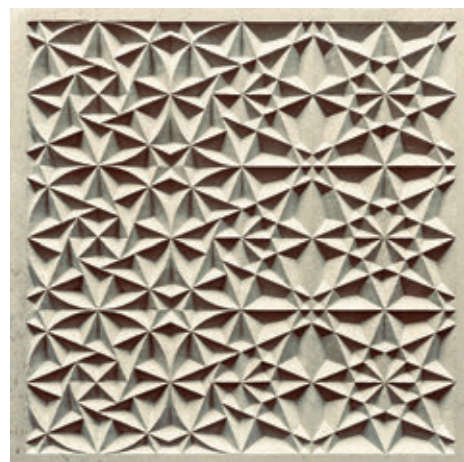
If you love new experiences, breath-taking coastlines and brand-new contemporary art make your way to the Isle of Portland this September. Join b-side on an unforgettable journey around Portland, with artworks created for this special Island that explore themes of biodiversity and climate change. Artists making brand new work for this year's festival include Wildworks, Emily Tracy, Knead and Anna Heinrich & Leon Palmer. Over the last two years a group of community researchers have uncovered stories, little known facts and gathered research on two very special sites at either end of the Island, to inspire and inform brand new artworks for the Festival.

Internationally renowned Wildworks create theatre for non conventional sites and spaces. *Uncommon Land* will be an uplifting celebration of Portland's unique landscape. Visual artist Emily Tracey creates small sculptural pieces, collage and artist books, inspired by the work of Portland Bird Observatory she will create a large installation made by many hands. Anna Heinrich & Leon Palmer use different media and techniques to create installations and large scale projection events. Fascinated by the blurring of boundaries between real and virtual space, light, material and architecture. They create immersive installations to explore the processes behind the world of appearances and facades. Artists Ishwari Bhalerao & Leonie Rousham work under the collaborative banner Knead. They will be producing a series of broadcasts for their pop up radio station.

All this as well as the b-side Fringe (7 - 10 and 15 - 17 September), the now infamous Portland Parade and lots of activities, workshops, talks and screenings. Prepare to have your senses tantalised, to connect with others around you, and to experience the landscape like never before.

[b-side.org.uk](http://b-side.org.uk)

## Diary Dates



ROGER BRADDICK, Wyllye Valley Art Trail

### NORTH SOMERSET ART WEEKS

**28 April - 8 May**

[northsomerstartarts.org](http://northsomerstartarts.org)

### WYLYE VALLEY ART TRAIL

**29 April - 8 May**

[wvat.co.uk](http://wvat.co.uk)

### EVOLVER PRIZE DEADLINE

**Thursday 18 May**

[evolver.org.uk/evolver-prize](http://evolver.org.uk/evolver-prize)

### OD ARTS FESTIVAL

**26 - 28 May**

[odartsfestival.co.uk](http://odartsfestival.co.uk)

### PURBECK ART WEEKS FESTIVAL

**27 May - 11 June**

[purbeckartweeksfestival.co.uk](http://purbeckartweeksfestival.co.uk)

### THE DORSET OPERA FESTIVAL

**24 - 29 July**

[dorsetopera.com](http://dorsetopera.com)

### B-SIDE FESTIVAL

**7 - 10 September**

[b-side.org.uk](http://b-side.org.uk)

### DEVON OPEN STUDIOS

**9 - 24 September**

[devonopenstudios.co.uk](http://devonopenstudios.co.uk)

### INSIDE OUT

**15 - 24 September**

[activateperformingarts.org.uk](http://activateperformingarts.org.uk)

### SOMERSET OPEN STUDIOS

**16 September - 4 October**

[somerstartworks.org.uk](http://somerstartworks.org.uk)

## Martyn Brewster: Colour Poems Fifty Years of Printmaking

**17 Mar - 29 Apr 2023**

The Vanner Gallery  
45 High Street  
Salisbury  
01722 501 551  
10am - 5pm Tuesday to Saturday  
[vannergallery.com](http://vannergallery.com)





# Visual Arts

March and April 2023



ANITA KLEIN 'OAK IN WINTER' (Linocut)

## The Life That Springs

"An exhibition to celebrate the life that springs at this time of year: joyous colourful works of art made by some of the most brilliant print-makers working today. Aquatint, carborundum, deep etching, linocut and woodcut prints by Anita Klein, Fred Cuming, Martyn Brewster, Merlyn Chesterman and Sally McLaren, plus ceramics by Yo Thom, and furniture by Petter Southall."

**25 March - 13 May:** Sladers Yard, WEST BAY, Bridport, DT6 4EL. Wednesday - Saturday 10am - 4.30pm. 01308 459511 / sladersyard.co.uk.

### 'A LANGUAGE OF SEEDS'

**Until 4 March**

Thelma Hulbert Gallery, Dowell Street, HONITON, EX14 1LX. Tuesday - Saturday 10am - 5pm. 01404 45006. "Photographs by Devon-based artist Léonie Hampton."

### 'FRAGILE EARTH'

**Until 4 March**

Thelma Hulbert Gallery, Dowell Street, HONITON, EX14 1LX. Tuesday - Saturday 10am - 5pm. 01404 45006 / thelmahulbert.com. "Work by artist Sally Baldwin."

### 'PORTRAITS OF GOLDEN CAP'

**Until 5 March**

Rotunda Gallery, Lyme Regis Museum, Bridge Street, LYME REGIS, DT7 3QA. Wednesday - Saturday 10am - 5pm, Sunday 10am - 4pm. £5.95. 01297 443370.

### 'TELLING TALES'

**Until 5 March**

Russell-Cotes Art Gallery and Museum, East Cliff, BOURNEMOUTH, BH1 3AA. Tuesday - Sunday 10am - 5pm. £8.50 / £4.50. 01202 128000 / russellcotes.com.

### PHILLIP WINSTONE: 'LANDLINES'

**Until 11 March**

Gallery On The Square, Queen Mother Square, DORCHESTER, DT1 3BL. Monday - Saturday 9.30am - 5pm, Sunday 11am - 4pm. 01305 213322 / gallerypoundbury.co.uk.

### KAY LEWIS-BELL: 'SHARED MOMENTS'

**Until 11 March**

ACE Arts, Market Place, SOMERTON, TA11 7NB. Tuesday - Saturday 10am - 5pm. 01458 273008.

### 'DOUBLE VISION'

**Until 11 March**

Fisherton Mill, 108 Fisherton Street, SALISBURY, SP2 7QY. Monday - Saturday 10am - 5pm. 01722 331921.

### ANNE PURKISS: 'BETWEEN WORK AND WINDOW'

**Until 12 March**

Royal West of England Academy, Queen's Road, Clifton, BRISTOL, BS8 1PX. 10am - 4pm. rwa.org.uk.

### 'SILENCE AND SLOW TIME'

**Until 18 March**

Sladers Yard, West Bay, BRIDPORT, DT6 4EL. Wednesday - Saturday 10am - 4.30pm. 01308 459511 / sladersyard.co.uk. "Paintings by Louise Balaam, Nicholas Jones and Alfred Stockham, alongside furniture by Petter Southall."

### SALLY MALTBY: 'FORMATION'

**Until 21 March**

Mowlem Theatre, Shore Road, SWANAGE, BH19 1DD. Monday, Wednesday, Friday and Saturday 11am - 1.30pm, Monday - Saturday 6 - 10.30pm. themowlem.com.

### 'BATH MIND'

**Until 31 March**

Central Gallery, Royal United Hospitals Bath, Combe Park, BATH, BA1 3NG. Monday - Sunday 8am - 8pm. 01225 824987 / artatruh.org.

### 'DEATH TO LIFE: IMAGE, EXPRESSION AND SYMBOLISM'

**Until 8 April**

John Wesley's New Room, 36 The Horsefair, BRISTOL, BS1 3JE. 10am - 4pm. £7 / £6. 0117 926 4740. "A reflective exhibition bringing together works by four twentieth century artists showcasing depictions of the Crucifixion..."

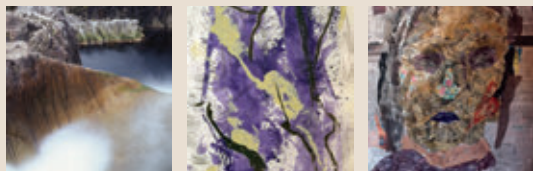
### EAST LONDON GROUP: 'DORSET DAYS'

**Until 8 April**

Lighthouse, 21 Kingland Road, POOLE, BH15 1UG. Tuesday - Saturday 10am - 9pm. 01202 280000. "Exhibition of work by artists of the storied East London Group, much of it related to Dorset, shown for the first time anywhere."

## WESSEX CONTEMPORARY ARTS

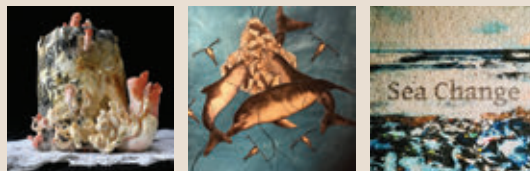
### 'Breathless'



**SHAFTESBURY ARTS CENTRE**

13 Bell Street, Shaftesbury, SP7 8AR  
Until 14 March, Monday - Saturday 10am - 4.30pm  
PV: Friday 3 March, 4.30 - 7pm

### 'What On Earth'



**44AD ARTSPACE**

4 Abbey Street, Bath, BA1 1NN  
25 - 30 April, 12noon - 6pm  
PV: Sunday 30 April, 3pm with Artist's Talk



## 'CAPTURING LIFE: A CENTURY OF THE NEW ENGLISH ART CLUB'

**Until 11 April**

Victoria Art Gallery, Bridge Street, BATH, BA2 4AT. Tuesday - Sunday 10.30am - 5pm. £7 / £6.50 / £2.50. 01225 477233 / victoriagal.org.uk.

## JESSICA PALMER: 'WETLAND SPRING'

**Until 11 April**

Victoria Art Gallery, Bridge Street, BATH, BA2 4AT. Tuesday - Sunday 10.30am - 5pm. £7 / £6.50 / £2.50. 01225 477233 / victoriagal.org.uk.

## THE PHOTO OPEN EXHIBITION

**Until 1 May**

Royal West of England Academy, Queen's Road, Clifton, BRISTOL, BS8 1PX. 10am - 4pm. £8. 0117 973 5129 / rwa.org.uk.

## JEM SOUTHAM: 'A BEND IN THE RIVER'

**Until 1 May**

Royal West of England Academy, Queen's Road, Clifton, BRISTOL, BS8 1PX. 10am - 4pm. £8. 0117 973 5129 / rwa.org.uk.

## PETER LIVERSIDGE: 'RURAL TIME'

**Until 8 May**

East Quay, WATCHET, TA23 0AQ. Tuesday - Sunday 10am - 6pm. eastquaywatchet.co.uk. See page 4.



## 'SPRING EXHIBITION'

**Until 21 July**

Tincleton Gallery, The Old School House, TINCLETON, near Dorchester, DT2 8QR. Friday - Monday 10am - 5pm. 01305 848909. "Mixed exhibition featuring over a dozen of our gallery artists and some special guests."

Above: Ruth Ander 'Uffington Castle'



LE CORBUSIER 'CHANDIGARH: THE OPEN HAND' (Maquette, 1956, image courtesy of Drawing Matter)

## Design for Life: Art and Architecture Part 1

"Hestercombe Gallery presents a new international exhibition featuring work from Le Corbusier to the present day. The *Design for Life - Art and Architecture - Part 1* show visually explores the historical intersection of art and architecture together with the interactions of artists and architects from the past 65 years. All eight spaces of Hestercombe Gallery bring together artworks by over twenty international artists and architects, beginning with a late work by Le Corbusier, one of the pioneers of modern architecture. Drawings, paintings, sculpture, models, photographs, film and plans are all represented. The modern and contemporary works are complemented by original eighteenth and nineteenth century watercolours and plans from Hestercombe's own collections."

**18 March - 2 July:** Hestercombe Gallery, Hestercombe Gardens, CHEDDON FITZPAINE, Taunton, TA2 8LG. 11am - 4pm. 01823 413923 / hestercombe.com.

## KATHY LITTLE AND LOUISE PLANT

**1 - 24 March**

Artwave West, MORCOMBELAKE, DT6 6DY. Wednesday - Saturday 10am - 5pm. artwavewest.com.

## STEPHEN & HOLLY YATES: 'PORTLAND PERSPECTIVES'

**1 - 26 March**

Walford Mill, Knobcrook Road, WIMBORNE, BH21 1NL. Wednesday - Saturday 10am - 5pm, Sunday 11am - 4pm. 01202 841400 / walfordmillcrafts.co.uk. Ceramics, paintings, and mixed media.

## 'SMALLS FOR WALLS'

**1 March - 2 April**

Sou'-Sou'-West Arts Gallery, Symonds Estate, BRIDPORT, DT6 6HG. 10.30am - 4.30pm. 01308 301326 / sousouwest.co.uk. "Open exhibition which focuses on smaller works of art, with a maximum size of 30 x 30 cm."

## 'SPRING HAS SPRUNG'

**1 March - 31 April**

Clevedon Craft Centre, Moor Lane, CLEVEDON, BS21 6TD. 10am - 4pm. 01275 341583 / studiothree.art.

## PETER THOMAS

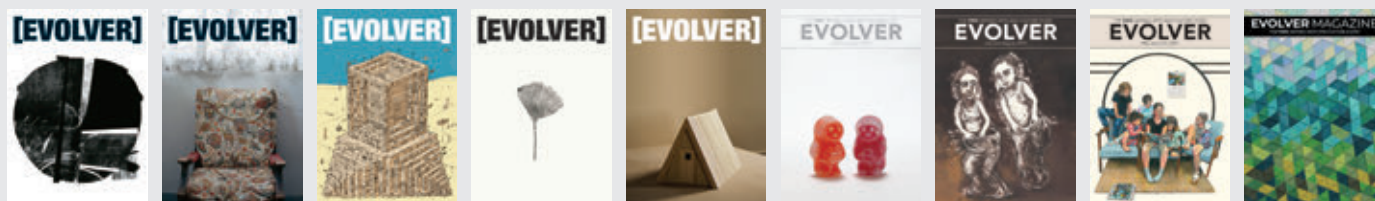
**2 - 31 March**

The Creative Gallery, St John's Hill, WAREHAM, BH20 4NB. Monday - Saturday 10am - 5pm. 01929 551505 / creativegallerywareham.co.uk. Wood.

## HARRIET SHEPPARD: 'PAUSE'

**3 March - 2 April**

Thrive Health & Wellness, Communal Space, 102 Commercial Road, BOURNEMOUTH, BH2 5LR. 11am - 6pm. 07970 347166. "Sit, breathe, sense."



## Evolver Prize 2023

**First Prize £1,000 + Evolver Magazine 132 Front Cover**

SEE PAGE 25





## Open Print Exhibition '23

11 March to 22 April 2023

A new biennial print exhibition showing work selected from open submission.



The Slade Centre, The Square, Gillingham, Dorset SP8 4AY  
Tuesday to Friday 9am - 4pm, Saturday 9am - 12 noon, Tel: 07775 431652  
sladecentre.com

THEATRE DANCE MUSIC FILM SPOKEN WORD COMEDY EXHIBITIONS TAKE PART

## BRIDPORT ARTSCENTRE

THE ALLSOP GALLERY IS OPEN!\*



Visit us online at [www.bridport-arts.com](http://www.bridport-arts.com) or call 01308 424901.

\*The Gallery is open Tuesdays – Saturdays, 10am to 4pm. FREE ENTRY.

## CERAMIC & STONE 23rd MARCH - 24th APRIL

Artwork by Jan Dagley



AN EXHIBITION OF SCULPTURE  
FROM A VARIETY OF ARTISTS

01458 780046

[Gallery@HeartofTheTribe.com](mailto:Gallery@HeartofTheTribe.com)

[www.HeartofTheTribe.com](http://www.HeartofTheTribe.com)

[f](#) [i](#) [@HeartofTheTribeGallery](#)

74 High Street, Glastonbury, BA6 9DZ



HEART OF  
THE TRIBE  
ART GALLERY

## SHOWCASING CORE ARTIST'S WORK 3rd FEBRUARY - 20th MARCH



GALLERY OPEN DAILY 11.00 - 17.00  
(CLOSED TUESDAYS & WEDNESDAYS)

SCAN CODE  
FOR MORE  
EVENTS INFO



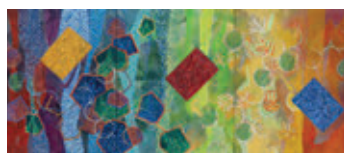
ART | ENERGY | COMMUNITY



## 'RENEWAL'

**3 March - 8 April**

Clifton Contemporary Art, 25 Portland Street, Clifton, BRISTOL, BS8 4JB. Tuesday - Saturday 10am - 5pm. 0117 317 9713 / cliftoncontemporaryart.co.uk.



## 'A LIFETIME BURNING IN EVERY MOMENT'

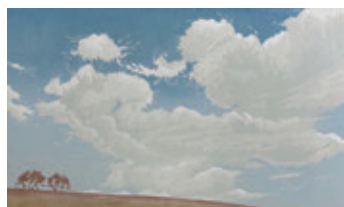
**4 - 19 March**

Sou'-Sou'-West Arts Gallery, Symonds Estate, BRIDPORT, DT6 6HG. 10.30am - 4.30pm. 01308 301326. "A retrospective of the late Phillip Willcocks's work"

## THE BRUNEL BRODERERS: 'INHABIT'

**7 March - 1 April**

Ilminster Arts Centre, The Meeting House, East Street, ILMINSTER, TA19 0AN. 9.30am - 3pm. 01460 54973 / themeeetinghouse.org.uk. "The Brunel Broderers are a group of artists based in the South West who work in a variety of textile media and methodologies."



## STEVE MANNING: 'A CELEBRATION OF SKY'

**7 March - 23 April**

Rotunda Gallery, Lyme Regis Museum, Bridge Street, LYME REGIS, DT7 3QA. Wednesday - Saturday 10am - 5pm, Sunday 10am - 4pm. 01297 443370 / lymeregismuseum.co.uk. "Exeter-based printmaker Steve Manning is drawn to ephemeral cloudscape over big landscapes and delivers his subjects with a lightness of touch and painterly quality reminiscent of watercolours." Above: 'Cloudscape 1'



SARAH WARD

## Somerset Printmakers: Flying

"A showcase of new work by fourteen experienced printmakers, pushing boundaries, improvising, experimenting and asking themselves what making a print can be about."

**18 March - 1 April:** Albatross Print Studio, East Quay, Harbour Road, WATCHET, TA23 0AQ. 10am - 5pm. 07967 588713 / albatrossprintstudio.com.

## 'HOPE AND LIGHT'

**9 - 20 March**

The Gallery Upstairs, Upton Country Park, Poole Road, Upton, POOLE, BH17 7BJ. 10am - 4pm. 07776 352434 / pedas.org.uk. Paintings by Helen Baddeley, Sharon Bielby, Stephen Perry, and Brady Turner.

## 'DOWNSIDE UPSTREET'

**10 March**

Hours, 10 Colston Yard, BRISTOL, BS1 5BD. 6 - 9pm. 07766 054659 / hours-space.com.

## FIONA CAMPBELL

**11 - 19 March**

Create@#8, 8 Town Street, SHEPTON MALLETT, BA4 5BG. 11am - 4pm. smartculture.org.uk.

## BOURNEMOUTH ARTS CLUB

**11 March - 23 April**

Red House Museum, Quay Road, CHRISTCHURCH, BH23 1BU. Wednesday - Saturday 10am - 4pm, Sunday 12noon - 4pm. 01202 482860 / bournemouthartsclub.co.uk. "102nd annual exhibition of new and original work by Bournemouth Arts Club members."

## JO PEARCE AND KELLY TOBIN

**15 - 28 March**

The Gallery, Shaftesbury Arts Centre, Bell Street, SHAFESBURY, SP7 8AR. Monday - Saturday 10am - 4pm. 01747 855243 / shaftesburyartscentre.org.uk.

## 'CONNECTION'

**18 - 25 March**

The Silk Mill, Merchants Barton, Saxon Vale, FROME, BA11 1PT. 10am - 4pm. 07792 397675 / artistsindialogue.org. "An exhibition by Somerset and Ukrainian artists (in Europe and Ukraine) who use the language of art to connect and create artwork on agreed themes relating to the war in Ukraine."

## 'THE INWARD EYE'

**18 March - 15 April**

Fisherton Mill, 108 Fisherton Street, SALISBURY, SP2 7QY. Monday - Saturday 10am - 5pm. 01722 415121. "Exuberant abstract and semi-abstract monoprint collages by Mylene O'Connor."



## AMY BONSOR: 'MOVEMENT, MULTIPLES AND MARGINS'

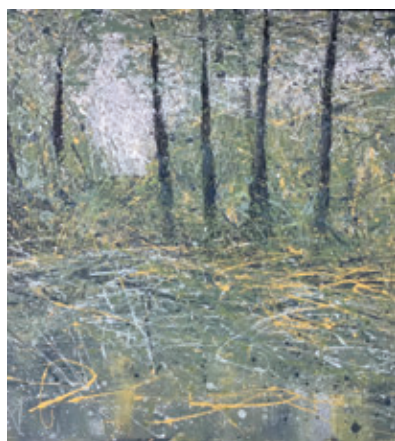
**18 March - 22 April**

ACE Arts, Market Place, SOMERTON, TA11 7NB. Tuesday - Saturday 10am - 5pm. 01458 273008 / acearts.co.uk. "Abstract, tactile works employing repetition and stitched construction to explore movement and transition."

## 'PARADISE FOUND: NEW VISIONS OF THE BLACKDOWN HILLS'

**18 March - 3 June**

Thelma Hulbert Gallery, Dowell Street, HONITON, EX14 1LX. Tuesday - Saturday 10am - 5pm. 01404 45006 / thelmahulbert.com. "Exhibition exploring the Blackdown Hills AONB through the artist's lens past and present, featuring the work of 36 contemporary artists alongside members of the Camden Town Group."



## MIKE NICHOLLS ART EXHIBITION

## '100'

1st and 2nd April  
10am - 4pm

Village Hall  
Merriott  
Somerset  
TA16 5QH

mikenicholls.org.uk

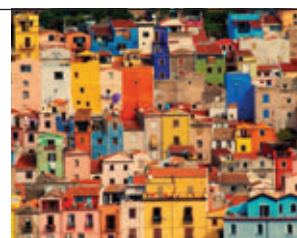
## Liberate Your Soul in Sardinia

**10 - 16 June 2023**

Drawing and painting from the model in a wonderful medieval studio. Very small group - only a couple of places left! £400 for tuition and materials. Free access to studio.

## BOSA ART SCHOOL

Further info: [meganplayers@yahoo.co.uk](mailto:meganplayers@yahoo.co.uk)



## EVOLVER MAGAZINE

**DEADLINE FOR NEXT ISSUE**

May and June 2023

FRIDAY 7 APRIL



# Visual Arts

## LOUISE BOURGEOIS

**22 March - 25 June**

Dorset Museum, 66 High West Street, DORCHESTER, DT1 1XA. Monday - Saturday 9am - 4.30pm, Sunday and Bank Holidays 10am - 4pm. £12 / £6. [dorsetmuseum.org](http://dorsetmuseum.org).

## 'ART OF POETRY'

**23 March - 3 April**

The Gallery Upstairs, Upton Country Park, Poole Road, Upton, POOLE, BH17 7BJ. 10am - 4pm. 07958 742765 / [thegalleryupstairs.org.uk](http://thegalleryupstairs.org.uk). "Artists respond to poetry written by members of Poole Poetry Collective. Also on show are ceramics by Joanna Wakefield."

## 'THIS IS NOW'

**24 March**

Dorset Museum, High West Street, DORCHESTER, DT1 1XA. 6 - 9pm. 01305 262735 / [dorsetmuseum.org](http://dorsetmuseum.org). "Contemporary installation, sound artworks, fine art, textiles and print, live music and performances."



## LEWIS PEAKE: 'NEW WORLDS'

**24 March - 23 May**

Mowlem Theatre, Shore Road, SWANAGE, BH19 1DD. Monday, Wednesday, Friday and Saturday 11am - 1.30pm, Monday - Saturday 6 - 10.30pm. [themowlem.com](http://themowlem.com). "Lewis Peake is a Swanage-based artist and illustrator working primarily with new media forms to construct futuristic narratives. Although his main tools are digital, he often builds models from local clay as a starting point for his digital forms. These are 3D scanned and then transformed."



JOAN HUDSON

## North Somerset Arts Week

"North Somerset Arts Week celebrates 21 years! From 28th April to 8th May, over 200 local artists will be opening up their homes and studios or gathering in shared venues to show you their latest work. Visitors can experience a huge variety of contemporary and traditional art, from ceramics to textiles, painting to sculpture - there's something for everyone to enjoy. There will be talks, workshops and some excellent homemade cakes!"

**28 April - 8 May:** 38 venues across NORTH SOMERSET. [northsomersetarts.org](http://northsomersetarts.org).

## 'CHASING THE LIGHT'

**25 March - 11 April**

Sou'-Sou'-West Arts Gallery, Symondsbur Estate, BRIDPORT, DT6 6HG. 10.30am - 4.30pm. 01308 301326. "A retrospective of the late Michael Chappell's work."

## TERESA LAWTON

**25 March - 3 May**

Gallery On The Square, Queen Mother Square, POUNDBURY, Dorchester, DT1 3BL. Monday - Saturday 9.30am - 5pm, Sunday 11am - 4pm. 01305 213322. Paintings.

## 'RISE AND SHINE'

**25 March - 7 April**

7A Hatch Gallery, Church Street, CHRISTCHURCH, BH23 1BW. Tuesday - Saturday 11am - 4pm. 07981 359084.

## 'HER STORY'

**29 March - 9 April**

Walford Mill, Knobcrook Road, WIMBORNE, BH21 1NL. Wednesday - Saturday 10am - 5pm, Sunday 11am - 4pm. 01202 841400. "Sculpture exhibition inspired by important women in history."

## GORDON CLOSE AND VICTORIA GARLAND

**29 March - 11 April**

The Gallery, Shaftesbury Arts Centre, Bell Street, SHAFTESBURY, SP7 8AR. Monday - Saturday 10am - 4pm. 01747 855243.

## DONNA GOOLD: 'WOODLANDS IN WAX'

**29 March - 21 April**

Artwave West, MORCOMBELAKE, DT6 6DY. Wednesday - Saturday 10am - 5pm. 01297 489746 / [artwavewest.com](http://artwavewest.com). "Polished encaustic paintings of woodlands."

## 'LOVE & WORRY'

**31 March - 29 April**

Pound Arts, Pound Pill, CORSHAM, SN13 9HX. Monday - Saturday 10am - 9.30pm. [poundarts.org.uk](http://poundarts.org.uk). "Portrait paintings."

## BELINDA SALES

**1 - 29 April**

The Creative Gallery, St John's Hill, WAREHAM, BH20 4NB. Monday - Saturday 10am - 5pm. 01929 551505 / [creativegallerywareham.co.uk](http://creativegallerywareham.co.uk). "Raku fired ceramics - whimsical sculptures, jewellery and wall art."



## 'IN HER OWN VOICE: THE ART OF LUCY KEMP-WELCH'

**1 April - 1 October**

Russell-Cotes Art Gallery and Museum, East Cliff Promenade, BOURNEMOUTH, BH1 3AA. Tuesday - Sunday 10am - 5pm. 01202 127249 / [russellcotes.com](http://russellcotes.com).

## 'OUTSIDE THE BOX'

**3 - 16 April**

Sou'-Sou'-West Arts Gallery, Symondsbur Estate, BRIDPORT, DT6 6HG. 10.30am - 4.30pm. 01308 301326 / [sousouwest.co.uk](http://sousouwest.co.uk). "A study of the Wey Navigation in Surrey, painted through artist Malcolm Giladjan's eyes."



# THE CREATIVE GALLERY

Showcasing ceramics, paintings, textiles, jewellery and glass by local artists



**Peter Thomas**  
Master Woodturner  
2nd - 31st March



**Belinda Sales**  
Remarkable Raku  
1st - 29th April

St John's Hill, Wareham, Dorset BH20 4NB t 01929 551505 e [creativegallery@hotmail.co.uk](mailto:creativegallery@hotmail.co.uk)  
Open Monday-Saturday 10am-5pm



## Visual Arts



JUSTIN ORWIN 'BREATHE'

### WESCA: Breathless

"A group exhibition by members of Wessex Contemporary Arts in response to the title 'Breathless' as a reflection of the times we live in and have experienced in recent times. Exciting, contemporary works: paintings, photographs, sculptures and other contemporary works."

**1 - 14 March:** The Gallery, Shaftesbury Arts Centre, Bell Street, SHAFTESBURY, SP7 8AR. Monday - Saturday 10am - 4.30pm. 01747 855243 / shaftesburyartscentre.org.uk.



BRIAN NOLAN: 'ACROSS TIME'

**5 - 29 April**

Gallery 4, Salisbury Library, Market Place, SALISBURY, SP1 1BL. Monday - Saturday 10am - 5pm. 07766 273860 / briannolanartist.co.uk. "A celebration of the work of Brian Nolan (1931 - 2019)."

#### BRIDPORT ART SOCIETY

**7 - 10 April**

The Salt House, West Bay Harbour, WEST BAY, DT6 4HB. 10am - 5pm. 07762 109368.

#### 'PRIMAVERA'

**7 - 13 April**

Malthouse Gallery, Town Mill, LYME REGIS, DT7 3PU. 10am - 5pm. 07811 102216 / alisonsheltonbrown.art.

#### 'THE ART OF PAINTING'

**7 - 18 April**

The Gallery Upstairs, Upton Country Park, Poole Road, Upton, POOLE, BH17 7BJ. 10am - 5pm. thegalleryupstairs.org.uk. Paintings by Pamela Marshall and Sarah McDonald.

#### ALAN BOOTH: 'AESTHETE II'

**15 - 25 April**

The Gallery, Shaftesbury Arts Centre, Bell Street, SHAFTESBURY, SP7 8AR. Monday - Saturday 10am - 4pm. 01747 855243. "A collection of artistic responses to recent personal experiences expressed in ceramics, photographs and drawings."

#### 'SPRING TIME'

**16 April - 1 May**

Sou'-Sou'-West Arts Gallery, Symonds Estate, BRIDPORT, DT6 6HG. 10.30am - 4.30pm. 01308 301326 / sousouwest.co.uk.

#### EDWARD HALL: 'PORTRAITS OF GOLDEN CAP'

**17 - 30 April**

Sou'-Sou'-West Arts Gallery, Symonds Estate, BRIDPORT, DT6 6HG. 10.30am - 4.30pm. 01308 301326 / sousouwest.co.uk.

#### 'THREE VIEWS'

**18 - 29 April**

Wells & Mendip Museum, 8 Cathedral Green, WELLS, BA5 2UE. Tuesday - Saturday 10am - 4pm. 01749 676348.

#### LIZ JAMES: 'HARBOUR RHYTHMS'

**22 and 23 April**

The Salt House, West Bay Harbour, WEST BAY, DT6 4HB. 10am - 4.30pm. 07762 109368. "This delightful exhibition celebrates the versatility of coloured pencils on paper."



### SOMERSET OPEN STUDIOS

16 September - 1 October 2023

Venue registrations for Somerset Art Weeks 2023 open on 1 March and close on 7 April

See [somerseartworks.org.uk](https://somerseartworks.org.uk) for information



## Wylde Valley

# ART

## Trail

Sat 29 April - Mon 8 May

#WVAT23

[wvat.co.uk](https://wvat.co.uk)

WYLDE VALLEY ART TRAIL

Sat 29 April - Mon 8 May

Free trail brochures at tourist information centres, libraries, arts centres and lots of other places from mid- March

73 VENUES  
240+ ARTISTS  
EXHIBITIONS  
OPEN STUDIOS  
WORKSHOPS  
GALLERIES

The Queen's Award for Voluntary Service



# Sou'-Sou'-West

04 – 19 March

## A Lifetime Burning in Every Moment

Phillip Willcocks Retrospective

25 March – 11 April

## Chasing the Light

Michael J Chappell retrospective

16 April – 01 May

## Spring Time

Call for entries (deadline contact

phil@sousouwest.co.uk)

06 - 29 May

## Facets

Maggie Wyman

Smalls for Walls

Until 02 April

Open Exhibition

Outside The Box

03 - 16 April

Malcom Giladjan

Portraits of Golden Cap

17 - 30 April

Edward Hall

Precipice

01 - 14 May

Sarah Jane Ross



ARTS COUNCIL  
ENGLAND



Dorset  
Council

Gallery & Shop

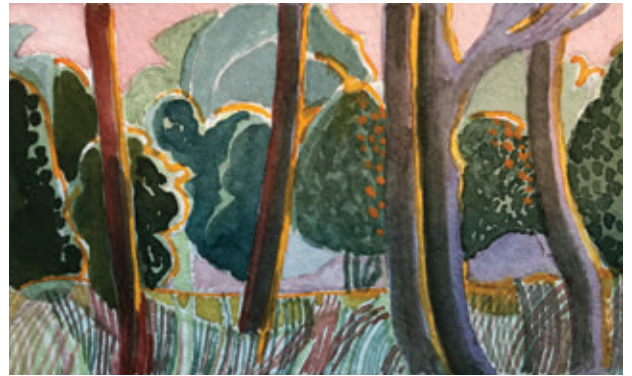
Daily: 10:30 - 16:30

Manor Yard, Symondsburys Estate,  
Bridport, DT6 6HG

sousouwest.co.uk



Bournemouth  
ARTS CLUB  
Southern Contemporaries



'Evening Light' by Ruth Oaks (Watercolour)

## 102nd Annual Exhibition

11th March - 23rd April 2023

Wednesday - Saturday 10am - 4pm

Sunday 12noon - 4pm

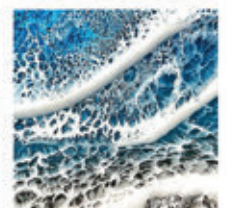
Free admission

[bournemouthartsclub.co.uk](http://bournemouthartsclub.co.uk)



RED HOUSE  
MUSEUM AND GARDENS

Quay Road, Christchurch, Dorset BH23 1BU



## WALFORD MILL

Contemporary art and craft gallery in a spectacular 16th Century Mill

EXHIBITIONS | ADULT AND CHILDREN'S WORKSHOPS

OPEN STUDIOS | INDEPENDENT SHOPS

COURTYARD MARKETS | CAFE

OPEN - WEDS - SAT 10-5PM - SUN 11-4PM

Knobcrook Road, Wimborne, Dorset, BH21 1NL

[www.walfordmillcrafts.co.uk](http://www.walfordmillcrafts.co.uk)

@walfordmill

Subscribe to  
**EVOLVER** MAGAZINE  
online at  
**evolver.org.uk**

Six bi-monthly issues for £25







## **SANDRA PORTER: 'SIGNIFICANT FORM'**

**22 April - 18 June**

The Whittox Gallery, Whittox Lane, FROME, BA11 3BY. Tuesday - Saturday 9am - 4pm, Sunday 10am - 4pm. [thewhittoxgallery.com](http://thewhittoxgallery.com).

Above: 'Shelter XII' (Watercolour, 30 x 40 cm)

## **BATH SOCIETY OF ARTISTS**

**22 April - 24 June**

Victoria Art Gallery, Bridge Street, BATH, BA2 4AT. Tuesday - Sunday 10.30am - 5pm. £7 / £6.50 / £2.50. [victoriagal.org.uk](http://victoriagal.org.uk). "This highly popular exhibition has been an annual gallery highlight for well over a century and showcases the best of the region's artistic talent."

## **SOMERTON GROUP OF ARTISTS**

**25 - 29 April**

Parish Rooms, Market Square, SOMERTON, TA11 7NB. Tuesday - Friday 10am - 4pm, Saturday 10am - 3pm. [somertonartists.co.uk](http://somertonartists.co.uk).

## **'WHAT ON EARTH!'**

**25 - 30 April**

44AD Artspace, 4 Abbey Street, BATH, BA1 1NN. 12noon - 6pm. 07753 378325 / [44ad.net](http://44ad.net). "Work by 15 Wesca (Wessex Contemporary Arts) artists in a rich variety of media and styles, some political some environmental, some just surprising!"

## **POOLE PRINTMAKERS**

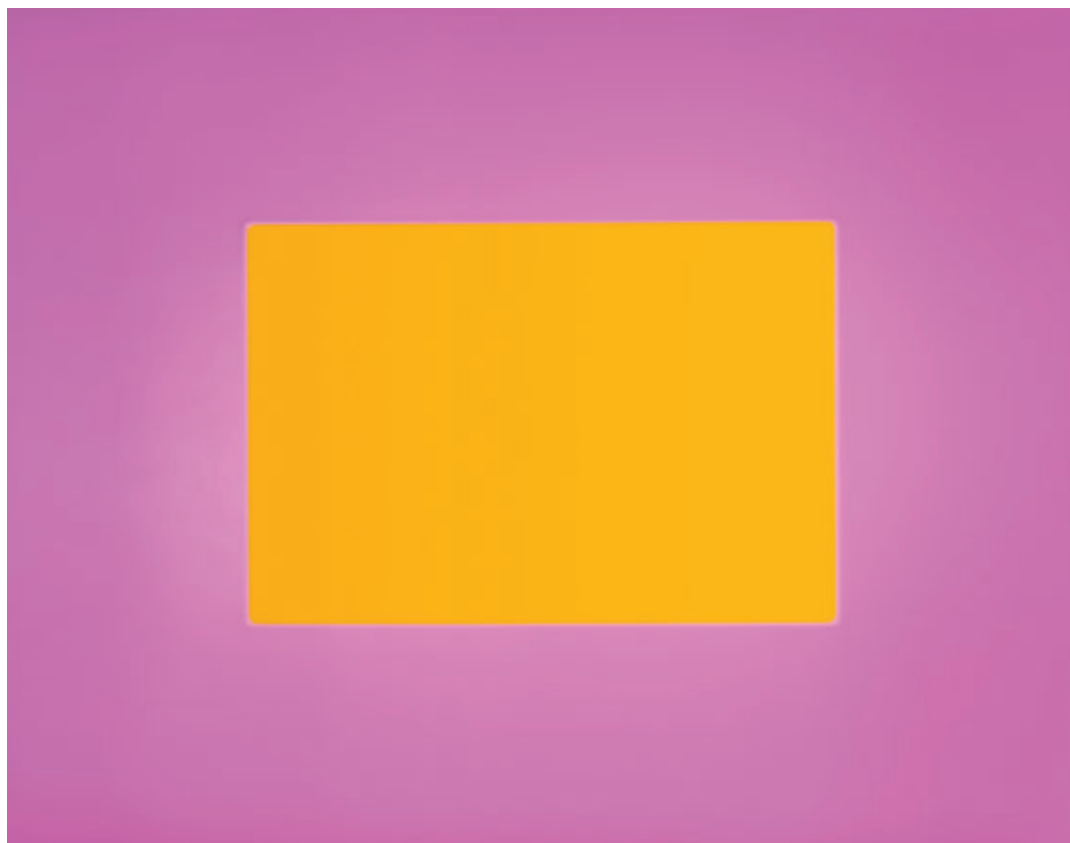
**25 April - 10 May**

Fine Foundation Gallery, Durlston Country Park, SWANAGE, BH19 2JL. 10am - 5pm. [durlston.co.uk](http://durlston.co.uk).

## **SHAFESBURY ARTS CENTRE ART GROUP**

**26 April - 2 May**

The Gallery, Shaftesbury Arts Centre, Bell Street, SHAFESBURY, SP7 8AR. Monday - Saturday 10am - 4pm. 01747 855243.



'THE COLOUR FIELDS, THE SOFTEST PINK ENCLOSES GOLDEN YELLOW' (2021)

## **Gary Fabian Miller: Adore**

"Garry Fabian Miller, one of the most inventive and original photographers of his time, makes a very welcome return to Arnolfini, and his home city of Bristol, to present this major exhibition celebrating a lifetime of his work. *Adore* invites you to explore Fabian Miller's 'camera-less' practice that experiments with darkness and light, and weaves in work by the artists, writers and thinkers that have inspired him over the years. *Adore* reveals an artist of incredible patience - returning to capture the same grove of hawthorn trees throughout the seasons, year after year - and for whom the slowing of time has taken on a deep-rooted importance."

**Until 28 May:** Arnolfini, 16 Narrow Quay, BRISTOL, BS1 4QA. Tuesday - Sunday 11am - 6pm. [arnolfini.org.uk](http://arnolfini.org.uk).

## **'WATER HISTORIES'**

**28 April**

Chard Guildhall, 14 Fore Street, CHARD, TA20 1PH. 10.30am - 3.30pm. 01460 239567 / [waterhistories.uk](http://waterhistories.uk). "Artwork by Anna Chrystal Stephens, the culmination of the Water Histories project in Chard with Somerset Art Works."

## **BRISTOL 1904 ARTS SOCIETY**

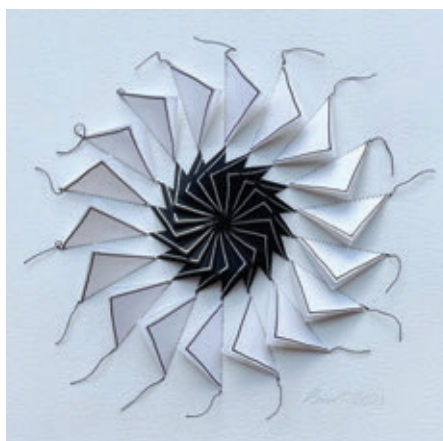
**29 April - 7 May**

The Red Lodge, Park Row, BRISTOL, BS1 5LJ. 10.30am - 4.30pm. 0117 927 3807 / [bristol1904arts.org](http://bristol1904arts.org). "Annual exhibition featuring approximately 100 outstanding paintings in all media by resident artists, with some submitted by guest artists."

## **JULIA MANNING: 'THE DECLINE OF SOMERSET EELS'**

**29 April - 27 May**

ACE Arts, Market Place, SOMERTON, TA11 7NB. Tuesday - Saturday 10am - 5pm. 01458 273008 / [acearts.co.uk](http://acearts.co.uk). "Exhibition raising awareness of the international decline of eels."



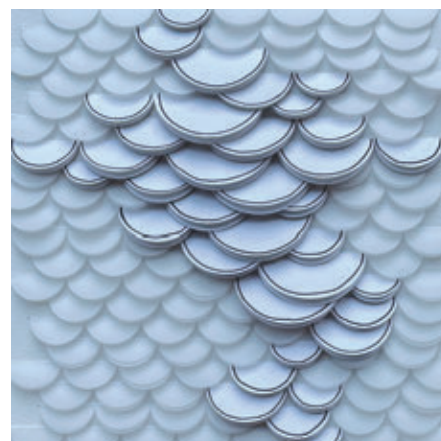
## **'MOVEMENT, MULTIPLES AND MARGINS'**

**Amy Bonsor**

**18 March - 22 April**



Market Place, Somerton, Somerset TA11 7NB  
Tuesday - Saturday 10am - 5pm  
01458 273008 • [acearts.co.uk](http://acearts.co.uk)





'FIELD, THE ISLAND' (2022)



'ABI, THE ISLAND' (2022)

## Robert Darch

Robert Darch is an artist photographer and is currently one of the invited artists in the Royal West of England Academy's *Season of Photography* in Bristol. For Rob photography is the medium he uses to pursue his artistic aims. It is important to him that his work retains its mystique. "Photography is poetic and over analysing removes the mystery." Book publication rather than exhibition is his preferred format as it allows him to fully realise the entire narrative of projects.

Darch studied photography at Newport and after a prolonged absence from his work because of a debilitating illness he completed a Masters at Plymouth University. His enforced ten years of inactivity made him very keen to revisit his earlier passion and at Plymouth he connected with Jem Southam whose work he had pursued during his undergraduate studies. Jem became a powerful and supportive influence for Rob and his series, *A Bend in The River*, is also currently on show at the RWA.

Rob first discovered photography when his grandfather gave him a camera. He was 15 and into skateboarding with his friends and that became his initial subject. He has continued to produce work that relates to subjects that are close to his heart. In his pursuit of landscape and portraiture, now combining the two by placing figures in the landscape, he stays close to his West Country roots and the Midlands where he grew up.

Voluntary work, leading to employment, often at art centres when he was too unwell to pursue a full-time career stood him in good stead. It gave him a steady stream of subjects for his portraiture.

Filmmaking has always been an important influence and his love for film has indirectly informed his practice. Living in Exeter before he returned to study in Plymouth he made some short documentary films for Arnolfini in Bristol.

When Rob first started out, film photography and darkroom practice were the only options and conserving shots to get the best picture was the driving force. Now he only uses digital and the shot selection is done at the editing stage giving him many more options. "Film is unrealistic now because it is too expensive. It is not sustainable. Whether it is film or digital, a camera is just a box that converts light."

He grew up between the worlds of analogue and digital. As a teenager, he did not experience mobile phones or social media and that makes a difference in how he perceives the world. Teenagers now have so much more to navigate. The three images on show at the RWA are from his most recent publication *The Island*.



Portrait photograph by Tavis Amosford

He chose to work in black and white for this project even though he tends to work in colour more frequently. He felt that monochrome contributed to the feeling of melancholy and emphasises the atmosphere.

The series of photographs for *The Island* emerged over a period of three years from 2016 to 2019 and were a direct and personal response to the enormity of the Brexit vote, the perceived catastrophic effect of the political events that followed alongside the growing climate emergency. His photography is intensely felt. "I don't have the answers, so instead, I chose to make a quiet series of poetic images that reflect how I am feeling."

He does not see himself as a political person and he understands the need to be open to other people's points of view. But for all this *The Island* does more than document a moment of huge political upheaval, it succeeds in revealing, with great sensitivity, the resilience of young people faced with so many challenges. The photos delve into their psyche revealing the essence of each subject. It is a searingly honest take on Britain at the end of the second decade of the second millennium but at the same time, it offers hope. This is entirely due to Robert's skill in engaging with his subjects whether they are people, trees or landscapes.

Fiona Robinson

### SEASON OF PHOTOGRAPHY

#### Until 1 May

Royal West of England Academy, Queen's Road, Clifton, BRISTOL, BS8 1PX. 10am - 4pm. £8. 0117 973 5129 / rwa.org.uk.

[robertdarch.com](http://robertdarch.com)



northsomersetarts.org • #NSAW23 • @northsomersetarts

Celebrating 21 years

North  
Somerset  
Arts

Arts Week  
28th April – 8th May 2023

over  
200  
artists



RWA



A Season of Photography, including RWA  
Photo Open Exhibition 2023, Jem Southam  
'A Bend in the River', and more.

28 January – 1 May 2023

[rwa.org.uk](http://rwa.org.uk)

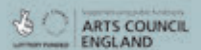
Royal West of England Academy,  
Queens Road, Clifton, Bristol, BS8 1PX

Image: Jem Southam, 'A Bend in the River' © Jem Southam

This exhibition is sponsored by



Supported by:



EAST  
QUAY

RURAL TIME

21.01.2023 - 08.05.2023

Peter Liversidge

@eastquaywatchet  
[eastquaywatchet.co.uk](http://eastquaywatchet.co.uk)  
Open daily 10am-4pm



Supported using public funding by  
**ARTS COUNCIL  
ENGLAND**

Contains Art CIO  
Charity Number: 1193931





# Music

March and April 2023

## WELLS CATHEDRAL SCHOOL CHAMBER CHOIR

### 3 March

Caryford Hall, Maggs Lane, Ansford, CASTLE CARY, BA7 7JJ. 12.45pm. £7.50. caryfordhall.co.uk.

## BARD IN THE YARD: 'THE SCOTTISH PLAY'

### 3 March

Village Hall, WEST STAFFORD, DT2 8AG. 8pm. £10 / £6. 07968 633834 / artsreach.co.uk.

## THE SCARLETT STONE TRIO

### 3 March

Art Bank, 13 High Street, SHEPTON MALLEY, BA4 5AA. 7pm. artbank.org.uk. "A delicious take on the songbook of Cole Porter."

## THE SCRIBES

### 3 March

The Ropemakers, 36 West Street, BRIDPORT, DT6 3QP. 9.30pm. 01308 421255. "Award-winning original hip-hop trio from Bristol."

## VENTRIS & UTTLEY

### 3 March

Bridport Arts Centre, 9 South Street, BRIDPORT, DT6 3NR. 11.30am. £14. 01308 424204 / bridport-arts.com.

## VENTRIS & UTTLEY

### 3 March

Ilminster Arts Centre, The Meeting House, East Street, ILMINSTER, TA19 0AN. 7.30pm. £18 / £5. 01460 54973.



## 'DORSET MUSIC UNBOXED!'

### 4 March

Parish Church, BLANDFORD, DT11 7PY. 4pm. £8 / £4. 01258 480698 / artsreach.co.uk. "Led by Phil Humphries and Tim Laycock, Dorset music group The Ridgeway Singers & Band has collaborated with the Dorset History Centre to bring to life traditional music, folksongs and carols from the collections hidden in its archives."



## Latchepen

"Latchepen are born out of a collective admiration of Django Reinhardt and anything that swings. Acoustic by nature, this is jazz on strings, with influences ranging from Romani music to bebop."

**3 March:** Comrades Hall, BROADWINDSOR, DT8 3QP. 7.30pm. £10 / £5. 07796 454203 / artsreach.co.uk.

**4 March:** Village Hall, LANGTON MATRAVERS, BH19 3HA. 7.30pm. £10 / £5. 01929 423834 / artsreach.co.uk.

**5 March:** St John's Church, HINTON MARTELL, BH21 7HE. 7.30pm. £10 / £5. 01258 840066 / artsreach.co.uk.

## VENTRIS & UTTLEY

### 4 March

The Dance House, Gouldsbrook View, North Street, CREWKERNE, TA18 7AL. 6.45pm. £18. 01460 75928 / concertsinthewest.org.

## 'PIAF'

### 4 March

The Corn Exchange, High East Street, DORCHESTER, DT1 1HF. 8pm. £15 / £13. 01305 266926 / dorchesterarts.org.uk.

## 'ELO AGAIN'

### 4 March

Lighthouse, 21 Kingland Road, POOLE, BH15 1UG. 7.45pm. 01202 280000 / lighthousepoole.co.uk.

## DEAN CARTER

### 4 March

The Beat & Track, The Old Shambles, South Street, SHERBORNE, DT9 3LN. 2pm. Free entry. 07730 356719 / thebeatandtrack.co.uk.

## PETER KNIGHT'S GIGSPANNER

### 4 March

The Beehive, Dowell Street, HONITON, EX14 1LZ. 7.30pm. £26. beehivehoniton.co.uk.

## BSO: 'FELIX KLIESER RECITAL'

### 8 March

Lighthouse, 21 Kingland Road, POOLE, BH15 1UG. 7.30pm. 01202 280000 / lighthousepoole.co.uk.

## BSO: 'FROM THE HEBRIDES TO PADSTOW'

### 8 March

The Mowlem, SWANAGE, BH19 1DD. 7.30pm. £12 / £6. 03336 663366 / artsreach.co.uk. "A special concert in celebration of the sea, performed by an ensemble of 14 players."

## THE ROUGH CUTS + MASAU'U + KITTY STEWART

### 9 March

Lighthouse, 21 Kingland Road, POOLE, BH15 1UG. 7.30pm. 01202 280000 / lighthousepoole.co.uk.

## ANDREW GOLDBERG AND RICKY ROMAIN

### 9 March

Clocktower Records, St Michael's Trading Estate, BRIDPORT, DT6 3RR. 7pm. 01308 424901 / clocktowermusic.co.uk. "An alchemical meeting of Western classical music and Indian classical music."



## 'A JOURNEY INTO FRENCH MUSIC'

### 10 March

Cecil Memorial Hall, CRANBORNE, BH21 5PZ. 7.30pm. £10 / £5. 07770 227095 / artsreach.co.uk. "Fifi la Mer and Oliver Wilby will take you on a journey through 100 years of French music, from Offenbach to Gainsbourg, not forgetting Michel Legrand and Edith Piaf. Expect a toe-tapping tribute to French music from this entertaining duo!"

## THE LEVELLERS

### 10 March

Lighthouse, 21 Kingland Road, POOLE, BH15 1UG. 7.30pm. 01202 280000 / lighthousepoole.co.uk.



AXE & TRAP STUDIOS IS A RECORDING FACILITY SITUATED AT THE FOOT OF THE MENDIP HILLS IN WELLS, SOMERSET.

Three performance spaces, 24 channel Trident console, extensive analogue outboard and much more.

Take a tour at  
AXEANDTRAPSTUDIOS.COM



## CHRIS CLEVERLEY

**10 March**

Taunton Brewhouse, Coal Orchard  
TAUNTON, TA1 1JL. 7.45pm. £12.  
01823 283244 /  
tauntonbrewhouse.co.uk.

## PUESTAS MANOS TRIO

**10 March**

Art Bank, 13 High Street, SHEPTON  
MALLET, BA4 5AA. 7pm. £3.  
artbank.org.uk. "Cypsy jazz, be-bop,  
Latin and rumba."

## ETHERIDGE & GARRICK

**10 March**

Ilminster Arts Centre, The Meeting  
House, East Street, ILMINSTER, TA19  
0AN. 7.30pm. £18. 01460 54973 /  
themeetinghouse.org.uk.

## ENGLISH TOURING OPERA:

**'GUILIO CESARE'**

**10 March**

Lighthouse, 21 Kingland Road,  
POOLE, BH15 1UG. 7.30pm. 01202  
280000 / lighthousepoole.co.uk.

## CLAIRE MARTIN AND HER TRIO

**10 March**

Lighthouse, 21 Kingland Road,  
POOLE, BH15 1UG. 7.45pm. 01202  
280000 / lighthousepoole.co.uk.  
Jazz.

## NINEBARROW

**11 March**

Hardye Theatre, Queen's Avenue,  
DORCHESTER, DT1 2ET. 8pm. £18 /  
£16. 01305 266926 /  
dorchesterarts.org.uk.

## 'A JOURNEY INTO FRENCH MUSIC'

**11 March**

Hut, POWERSTOCK, DT6 3TB.  
7.30pm. £10 / £5. 01308 485730 /  
artsreach.co.uk. See 10 March.

## 'A JOURNEY INTO FRENCH MUSIC'

**12 March**

Memorial Hall, PIDDLTRENTHIDE,  
DT2 7QF. 3pm. £10 / £5. 07786  
880676 / artsreach.co.uk. See 10  
March.

## SALISBURY CHAMBER CHORUS:

**'MOZART REQUIEM'**

**12 March**

St Thomas's Church, St Thomas's  
Square, SALISBURY, SP1 1BA.  
7.30pm. £15. 07963 481068 /  
salisburychamberchorus.org.



## Get The Blessing

"Grounded by the rhythm section of Jim Barr and Clive Deamer, who have toured the world with the likes of Portishead and Radiohead, and fronted by Pete Judge and Jake McMurchie, two of the most distinctive horn players in the South West, Get The Blessing promise an evening of deliciously uncategorisable post-jazz."

**4 March:** Winchester Gate Inn, Rampart Road, SALISBURY, SP1 1JA. 7.30pm. £15. 07921 398969 /  
thewinchestergate.com.



## GREENWICH PIANO TRIO

**12 March**

Kimmeridge House, Bournemouth  
University, Fernbarrow, POOLE,  
BH12 5BB. 3pm. £20. 01202 745516 /  
bournemouthchambermusic.co.uk.

## DAVE KELLY, BOB HALL AND HILARY BLYTHE

**15 March**

Caryford Hall, Maggs Lane, Ansford,  
CASTLE CARY, BA7 7JJ. 6.45pm. £18  
/ £15. caryfordhall.co.uk. "Blues and  
boogie."

## ROXANE GAY

**15 March**

Bath Forum, 1A Forum Buildings,  
BATH, BA1 1UG. 7.30pm. £39 / £34 /  
£29. 01225 443114.

## LAUREL SWIFT & FRIENDS

**16 March**

John Wesley's New Room, 36 The  
Horsefair, BRISTOL, BS1 3JE. 7pm.  
£17 / £15 / £13. 0117 9264740 /  
newroombristol.org.uk. Folk.

## MIKE DENHAM

**17 and 18 March**

Tincton Gallery, The Old School  
House, TINCLETON, near  
Dorchester, DT2 8QR. 7.30pm. £15.  
01305 848909 /  
tinctongallery.com. "Solo piano  
recital."

## HANNAH JAMES AND TOBY KUHN

**18 March**

Lighthouse, 21 Kingland Road,  
POOLE, BH15 1UG. 8pm. 01202  
280000 / lighthousepoole.co.uk.

## KIKI DEE AND CARMELO LUGGERI

**18 March**

The Corn Exchange, High East  
Street, DORCHESTER, DT1 1HF.  
8pm. £20 / £18. 01305 266926.

# SHERBORNE TIMES

A MONTHLY CELEBRATION OF PEOPLE, PLACE AND PURVEYOR

**OUT NOW  
AND ONLINE**

sherbornetimes.co.uk

**Artist at Work No.52**

Geoff Shillito, *The Girl on The Beach*



## CORACLE

**18 March**

Village Hall, MILBORNE ST  
ANDREW, DT11 0JX. 7.30pm. £10 /  
£5. 01258 839060 / artsreach.co.uk.  
"Coracle fuse traditional with  
contemporary in an exhilarating  
voyage which has British folk  
tradition at its very heart, cut loose  
by contemporary classical and  
splashes of early music."

## PHOENIX RIVER BAND + SARAH YEO

**18 March**

Bridgwater Arts Centre, 11 - 13 Castle  
Street, BRIDGWATER, TA6 3DD.  
8pm. £18. 01278 422700 /  
bridgwaterartscentre.co.uk.

## CORACLE

**19 March**

Village Hall, BURTON BRADSTOCK,  
DT6 4QD. 7.30pm. £10 / £5. 01308  
897421 / artsreach.co.uk. See 18  
March.

## BSO: 'SONGS FROM THE HEART'

**22 March**

Lighthouse, 21 Kingland Road,  
POOLE, BH15 1UG. 7.30pm. 01202  
280000 / lighthousepoole.co.uk.

## PHIL CUNNINGHAM & ALY BAIN

**22 March**

Widcombe Social Club, Widcombe  
Hill, BATH, BA2 6AA. 7.30pm. £20 /  
£18. 07880 703518. Folk.



## THE NEIL MAYA QUARTET: 'CARTOON JAZZ'

**23 March**

Village Hall, STUDLAND, BH19 3BT.  
7.30pm. £10 / £5. 01929 450587 /  
artsreach.co.uk. "Playing the best in  
jazz from the cartoons, The Neil  
Maya Quartet injects some Yabba  
Dabba Doo into your favourite  
looney tunes - from Frozen to The  
Flintstones, Top Cat to Toy Story,  
The Simpsons to Sesame Street."



## English Touring Opera: Lucrezia Borgia

"Donizetti's *Lucrezia Borgia*, in a new production directed by  
Eloise Lally, making her ETO directorial debut, is a thrilling and  
moving meditation on power and motherhood. The tragedy of a  
complex woman in a dangerous situation, Donizetti created one  
of opera's great anti-heroines, as well as one of the most  
challenging roles in the soprano repertoire. Paula Sides stars in  
the title role, with Thomas Elwin as Gennaro, Katie Coventry as  
Orsini and Aidan Edwards as Alfonso. ETO Music Director Gerry  
Cornelius conducts."

**11 March:** Lighthouse, 21 Kingland Road, POOLE, BH15 1UG.  
7.30pm. 01202 280000 / lighthousepoole.co.uk.

## JESS MORGAN

**23 March**

Art Bank, 13 High Street, SHEPTON  
MALLETT, BA4 5AA. 10am - 3pm. £10  
/ £6. artbank.org.uk. Folk.

## THE NEIL MAYA QUARTET: 'CARTOON JAZZ'

**24 March**

Village Hall, MARNHULL, DT10 1JZ.  
7.30pm. £10 / £5. 01258 820458 /  
artsreach.co.uk. See 23 March.

## THE SALTS

**24 March**

Lighthouse, 21 Kingland Road,  
POOLE, BH15 1UG. 8pm. 01202  
280000 / lighthousepoole.co.uk.



## XHOSA COLE

**24 March**

Marine Theatre, Church Street,  
LYME REGIS, DT7 3QB. 8pm. £16.  
01297 442394 / jazzjurassica.co.uk.  
"Multi-award-winning sax player  
explores the music of jazz titan  
Thelonious Monk."

## BSO: 'STAR WARS: THE DEFINITIVE CONCERT'

**25 March**

Lighthouse, 21 Kingland Road,  
POOLE, BH15 1UG. 7.30pm. 01202  
280000 / lighthousepoole.co.uk. "A  
magnificent celebration of John  
Williams' timeless music from all of  
the Star Wars films."

## CARA DILLON

**25 March**

The Exchange, Old Market Hill,  
STURMINSTER NEWTON, DT10 1FH.  
7.30pm. £22. 01258 475137 / stur-  
exchange.co.uk.

## THE NEIL MAYA QUARTET: 'CARTOON JAZZ'

**25 March**

Pamela Hambro Hall,  
WINTERBORNE STICKLAND, DT11  
ONT. 7.30pm. £10 / £5. 01258 880920  
/ artsreach.co.uk. See 23 March.

## JONNY FLUFFYPUNK

**26 March**

The Gaggles of Geese, BUCKLAND  
NEWTON, DT2 7BS. 6.30pm. £5  
01300 345249 / artsreach.co.uk.  
"Acclaimed stand-up poet,  
storyteller and lo-fi theatremaker  
Jonny Fluffypunk is back with a  
brand spanking new show about  
searching for the hero inside  
yourself, without involving M-  
People."

## BUDAPEST CAFÉ ORCHESTRA

**26 March**

The Corn Exchange, High East  
Street, DORCHESTER, DT1 1HF. 7pm.  
£17 / £15. 01305 266926 /  
dorchesterarts.org.uk.

## BSO: 'MIGHTY BRAHMS'

**29 March**

Lighthouse, 21 Kingland Road,  
POOLE, BH15 1UG. 7.30pm. 01202  
280000 / lighthousepoole.co.uk.

## APOLLO SAXOPHONE QUARTET

**29 March**

Taunton Brewhouse, Coal Orchard  
TAUNTON, TA1 1JL. 7.30pm. £18.  
01823 283244 /  
tauntonbrewhouse.co.uk.

## CUT THROAT FRANCIS

**31 March**

The Ropemakers, 36 West Street,  
BRIDPORT, DT6 3QP. 9.30pm. 01308  
421255 / theropemakers.com.



We are a funky, independent record shop stocking a great  
range of new and preloved vinyl, specialising in Reggae, Hip  
Hop, Soul, Funk, World, Electronic, Jazz, Blues, Alternative,  
Indie, Rock, Pop and more

**8a Pope Street, Brewery Square, Dorchester, DT1 1GW**  
Tuesday to Saturday from 10am

## CLOCKTOWER RECORDS

Unit 10a  
St Michael's Estate  
St Michael's Lane  
Bridport  
Dorset DT6 3RR  
+  
35a South Street  
Bridport  
Dorset DT6 3NY  
Monday to Saturday  
10am - 4.30pm  
clocktowermusic.co.uk





## Ensemble Molière

"Ensemble Molière has gained a reputation as an established early music ensemble. Their unique combination of instruments provides memorable and creative programmes from the repertoire of the 17th and 18th centuries, all performed on historical instruments."

**21 April:** Ilminster Arts Centre, The Meeting House, East Street, ILMINSTER, TA19 0AN. 7.30pm. £18 / £5. 01460 54973 / [themeetinghouse.org.uk](http://themeetinghouse.org.uk).

### ZOE SCHWARZ

**31 March**

Ilminster Arts Centre, The Meeting House, East Street, ILMINSTER, TA19 0AN. 7.30pm. £18. 01460 54973 / [themeetinghouse.org.uk](http://themeetinghouse.org.uk). *Blues*.

### JOHN ETHERIDGE ORGAN TRIO

**31 March**

Lighthouse, 21 Kingland Road, POOLE, BH15 1UG. 8pm. 01202 280000 / [lighthousepoole.co.uk](http://lighthousepoole.co.uk).



### YETI!

**31 March**

The Red Hot Jazz Club, The Red Brick Building, Morland Road, GLASTONBURY, BA6 9FT. 7.30pm. £12 / £10. 07973 116435 / [redbrickbuilding.co.uk](http://redbrickbuilding.co.uk).

### MOSCOW DRUG CLUB

**1 April**

The Beehive, Dowell Street, HONITON, EX14 1LZ. 8pm. £18. [beehivehoniton.co.uk](http://beehivehoniton.co.uk).

### BARE JAMS

**1 April**

The Exchange, Old Market Hill, STURMINSTER NEWTON, DT10 1FH. 8pm. £15. [exchange.co.uk](http://exchange.co.uk).

### RAG MAMA RAG

**8 April**

Caryford Hall, Maggs Lane, Ansford, CASTLE CARY, BA7 7JJ. 6.45pm. £15 / £12. [caryfordhall.co.uk](http://caryfordhall.co.uk). *"American blues."*

### ZOE GILBY QUINTET

**15 April**

The Gateway Theatre, Fore Street, SEATON, EX12 2LD. 7pm. £37.50 / £25. 01297 625699 / [jazzjurassica.co.uk](http://jazzjurassica.co.uk). *"Sizzling jazz."*

### ENSEMBLE MIRAGE

**16 April**

Kimmeridge House, Bournemouth University, Fernbarrow, POOLE, BH12 5BB. 3pm. £20. 01202 745516 / [bournemouthchambermusic.co.uk](http://bournemouthchambermusic.co.uk).

### OLD SPOT + RHONA DALLING

**20 April**

John Wesley's New Room, 36 The Horsefair, BRISTOL, BS1 3JE. 7pm. £17 / £15 / £13. 0117 9264740 / [newroombristol.org.uk](http://newroombristol.org.uk). *"Foot stomping old-time music on fiddle, banjo, gourd banjo and guitar."*

### THE OCELOTS

**21 April**

Taunton Brewhouse, Coal Orchard TAUNTON, TA1 1JL. 7.45pm. £13.50. [tauntonbrewhouse.co.uk](http://tauntonbrewhouse.co.uk).

### RONAN MAGILL

**21 and 22 April**

Tincleton Gallery, The Old School House, TINCLETON, near Dorchester, DT2 8QR. 7.30pm. £15. [tincletongallery.com](http://tincletongallery.com). *"Classical piano."*

### ROCKAWAY PARK CIDER FESTIVAL

**23 April**

Rockaway Park, Eastcourt Road, Temple Cloud, BRISTOL, BS39 5BU. 7pm. £10. [rockawaypark.co.uk](http://rockawaypark.co.uk).

### WEYMOUTH CIDER FESTIVAL

**28 April**

Weymouth Pavilion, The Esplanade, WEYMOUTH, DT4 8ED. 6pm. £22. 01305 783225 / [weymouthpavilion.com](http://weymouthpavilion.com).

# Concerts IN THE West

CHAMBER MUSIC MINI-TOURS IN  
DORSET AND SOMERSET - 18<sup>TH</sup> SEASON

BRIDPORT - CREWKERNE - ILMINSTER - PENDOMER (NR YEOVIL)  
UPLYME - UPWEY (NR WEYMOUTH)

3 FEBRUARY TO 5 NOVEMBER 2023



• 3, 4, 5 FEBRUARY

**SPIRITATO**

• 3, 4 MARCH

ROSALIND VENTRIS VIOLA  
RICHARD UTTLEY PIANO

• 21, 22, 23 APRIL

**ENSEMBLE MOLIERE**

• 5, 6 MAY

NORTHERN CHORDS ENSEMBLE

• 2, 3, 4 JUNE

**CHAMBERMUSICBOX**

• 7, 8 JULY

FAIR ORIANA  
PENELOPE APPEYARD SOPRANO  
ANGELA HICKS SOPRANO

• 1, 2 SEPTEMBER

**RICCARDO PES** CELLO  
**ALEXANDER BOYD** PIANO

• 6, 7 OCTOBER

EMMANUEL BACH VIOLIN  
JULIAN TREVELYAN PIANO

• 3, 4, 5 NOVEMBER

**FITZROY QUARTET**

Please visit our website for information on all the performers, venues, dates and how to book.

Online booking - <https://tickets.concertsinthewest.org/>

[concertsinthewest@gmail.com](mailto:concertsinthewest@gmail.com) - CATHERINE MADDOCKS DIRECTOR

[www.concertsinthewest.org](http://www.concertsinthewest.org)

# ARTCETERA

EST . 1970

## Picture Framing & Artists Materials



01202 423408 [artcetera853@gmail.com](mailto:artcetera853@gmail.com) 853 Christchurch Road BH7 6AR



# Performance

March and April 2023



## The Battling Butlers

"Using a unique blend of physical theatre, circus skills, original songs and live music, The Battling Butlers is a study of role reversal and the inevitability of change, as the old order makes way for the new. Performed by father and son, Simon Pullum and Loki Pickering, with original live music from Julian Gaskell."

**24 March:** Jubilee Hall, YETMINSTER, DT9 6LQ. 7.30pm. £10 / £5. 01935 873546 / artsreach.co.uk.

**25 March:** Village Hall, CHILD OKEFORD, DT11 8EX. 7.30pm. £10 / £5. 01258 861621 / artsreach.co.uk.

**26 March:** Royal Manor Theatre, PORTLAND, DT5 1LT. 7.30pm. £10 / £5. 03336 663366 / artsreach.co.uk.

### LLOYD GRIFFITH

**1 March**

Lighthouse, 21 Kingland Road, POOLE, BH15 1UG. 7.45pm. 01202 280000 / lighthousepoole.co.uk. Comedy.

### 'HELP! I THINK I'M A NATIONALIST'

**1 - 3 March**

Bristol Old Vic, King Street, BRISTOL, BS1 4ED. 8pm. 01179 877877 / bristololdvic.org.uk.

### BARD IN THE YARD: 'THE SCOTTISH PLAY'

**2 March**

The Exchange, STURMINSTER NEWTON, DT10 1FH. 8pm. £10 / £6. 01258 475137 / artsreach.co.uk.

### THE NOISE NEXT DOOR

**3 March**

The Corn Exchange, High East Street, DORCHESTER, DT1 1HF. 8pm. £15 / £13. 01305 266926 / dorchesterarts.org.uk.

### 'PHONEY TOWERS'

**4 March**

The Exchange, Old Market Hill, STURMINSTER NEWTON, DT10 1FH. 7.30pm. £18.50. 01258 475137 / stur-exchange.co.uk.

### 'HOLE'

**4 March**

Lighthouse, 21 Kingland Road, POOLE, BH15 1UG. 8pm. 01202 280000 / lighthousepoole.co.uk. Comedy.



### 'TEECHERS LEAVERS '22'

**7 and 8 March**

Lighthouse, 21 Kingland Road, POOLE, BH15 1UG. 7.45pm (Wednesday matinee 2pm). 01202 280000. "John Godber's breath-taking, breakneck comedy about education for the 'haves' and 'have nots' and a generation left behind brings to life an array of terrifying teachers and hopeless pupils through the eyes of Year 11 students Salty, Gail and Hobby."



### 'ROSE'

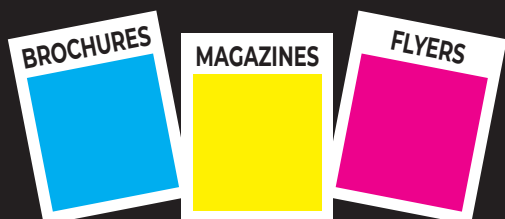
**9 March**

The Corn Exchange, High East Street, DORCHESTER, DT1 1HF. 8pm. £12 / £10. 01305 266926. "Everything seems normal for Rose when she first starts school until her sight begins to fail and she struggles with physical disability. A special school seems the answer. She is talented and creative, but she remains isolated in her teens."

### NEW PERSPECTIVES: 'THE SWEARING JAR'

**10 March**

Village Hall, SYDLING ST NICHOLAS, DT2 9NX. 7.30pm. £10 / £5. 01300 341777 / artsreach.co.uk. "UK premiere of Kate Hewlett's award-winning bittersweet comedy, offering audiences a warm embrace, full of heartbreak, humour and songs."



**((acoustic))**  
DISTRIBUTION

We deliver any marketing material

Call Will on 07397 853006  
acousticdistribution@btinternet.com  
acousticdistribution.co.uk

## EVOLVER MAGAZINE FREE LISTINGS

Exhibition and performance listings should be emailed to [listings@evolver.org.uk](mailto:listings@evolver.org.uk)

Please send ALL information in the following order:

Event, date(s), venue, address (including postcode), times, admission fee (if any), contact number / website, up to 30 words about your event



## Performance

### 'WHAT THE DICKENS!'

10 March

The Corn Exchange, High East Street, DORCHESTER, DT1 1HF. 8pm. £30 (includes drink and light supper). [dorchesterarts.org.uk](http://dorchesterarts.org.uk). "Channel your inner Mr and Mrs Fezziwig and join us for an evening of Dickens' party magic!"

### SCOTT BENNETT

11 March

Lighthouse, 21 Kingland Road, POOLE, BH15 1UG. 8pm. 01202 280000. Comedy.

### NEW PERSPECTIVES: 'THE SWEARING JAR'

11 March

Memorial Hall, STURMINSTER MARSHALL, BH21 4BQ. 7.30pm. £10 / £5. 07903 057427 / [artsreach.co.uk](http://artsreach.co.uk). See 10 March.

### 'WALDO'S CIRCUS OF MAGIC & TERROR'

11 March - 1 April

Bristol Old Vic, King Street, BRISTOL, BS1 4ED. 7.30pm. [bristololdvic.org.uk](http://bristololdvic.org.uk). "Uplifting new circus theatre musical."

### 'BUT I HAVEN'T FINISHED YET'

12 March

The Royal Oak, DRIMPTON, DT8 3RD. 6.30pm. £5. 01308 867617 / [artsreach.co.uk](http://artsreach.co.uk). "Join poet Brenda Read-Brown on a riotous celebration of growing older in a brand-new show to delight and entertain audiences, however advanced in life they may be!"

### 'WE WERE PROMISED HONEY!'

15 - 18 March

Bristol Old Vic, King Street, BRISTOL, BS1 4ED. 8pm. 01179 877877 / [bristololdvic.org.uk](http://bristololdvic.org.uk). "A hopeful, hopeless prophecy for earth and humankind. A story of us, our future, of paradise and how we get there in the end."

### 'CABARET WITH CLAWS'

17 March

Lighthouse, 21 Kingland Road, POOLE, BH15 1UG. 8pm. 01202 280000. "Charlie Bicknell and Louise Innes return with a veritable petri dish of stunningly irreverent and ballsy songs - the unexpected has rarely been so expected."



## Gary Clarke Company: Wasteland

"Capturing a pivotal moment in social history, acclaimed choreographer Gary Clarke's explosive *Wasteland* explores that time when despair turned into euphoria as the ravaged landscape of post-industrial Britain was transformed by the illegal rave culture of the 1990s and for an instant, it seemed music and dance might save the day. Created to mark the 25th anniversary of the demolition of Grimethorpe Colliery in South Yorkshire and 30 years since the rise of UK rave culture, *Wasteland* is a thrilling yet deeply touching dance theatre production and the eagerly-awaited sequel to Clarke's multi-award winning hit *Coal*. The striking miners of *Coal* fought for their families, their livelihoods, their communities, their futures and for an industry... but what happened to the families who survived the epic year-long battle of the Miners' Strike of 1984 and 1985? *Wasteland* looks at how two different generations coped in this turbulent era of radical upheaval as industrial Britain fell and a new subculture emerged. As one generation grinds exhaustedly to a halt, the next generation heads into the illegal rave scene of 1990s Britain, where derelict warehouses and abandoned work spaces become home for a new community of music and dance."

**15 March:** Lighthouse, 21 Kingland Road, POOLE, BH15 1UG. 7.45pm. 01202 280000 / [lighthousepoole.co.uk](http://lighthousepoole.co.uk).

### 'THE WINSTON MACHINE'

21 - 25 March

Bristol Old Vic, King Street, BRISTOL, BS1 4ED. 3 and 8pm. 01179 877877 / [bristololdvic.org.uk](http://bristololdvic.org.uk).

### 'NOUGHTS AND CROSSES'

21 - 25 March

Lighthouse, 21 Kingland Road, POOLE, BH15 1UG. 7.45pm (Thursday and Saturday matinees 2pm). [lighthousepoole.co.uk](http://lighthousepoole.co.uk).

### JIMMY CARR

23 March

Lighthouse, 21 Kingland Road, POOLE, BH15 1UG. 7.30pm. 01202 280000 / [lighthousepoole.co.uk](http://lighthousepoole.co.uk).

### 'PURSUED BY A BEAR'

24 March

The Corn Exchange, High East Street, DORCHESTER, DT1 1HF. 8pm. £14 / £12. 01305 266926 / [dorchesterarts.org.uk](http://dorchesterarts.org.uk).

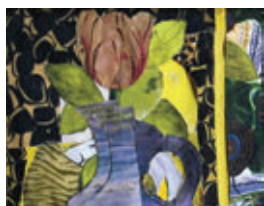
### 'COLLECT'

25 March

Electric Palace, 35 South Street, BRIDPORT, DT6 3NY. 7pm. £10 / £8. [electricpalace.org.uk](http://electricpalace.org.uk). "Contemporary dance from South-West based, mature and inclusive dance companies, performing works created with professional choreographers."



## Shaftesbury Arts Centre



### WESCA

Gallery exhibition  
1 - 14 March



### Kast Off Kinks

Saturday 18 March  
7.30pm



### Gordon Close and Victoria Garland

Gallery exhibition  
29 March - 11 April



### Daisy Pulls it Off

10 - 22 April  
7.30pm



### Good

Recorded Live National  
Theatre production  
Sunday 30 April, 7pm

11 - 13 Bell Street Shaftesbury, Dorset SP7 8AR [f](https://www.facebook.com/shaftesburyartscentre) [i](https://www.instagram.com/shaftesburyartscentre) [t](https://www.tiktok.com/shaftesburyartscentre) 01747 854321 • [shaftesburyartscentre.org.uk](http://shaftesburyartscentre.org.uk)



# Performance

## 'NOTHING ON EARTH'

25 March

Village Hall, CORFE CASTLE, BH20 5EE. 7.30pm. £10 / £5. 07590 352219 / artsreach.co.uk. "Long forgotten stories tell themselves as the song and voices of pioneering women ring around the room. What's going on? Expect a fantastical, heart-catching, time-travelling tale of female experiences and women taking flight."

## RHYS JAMES: 'SPILT MILK'

26 March

Bristol Old Vic, King Street, BRISTOL, BS1 4ED. 2.30 and 7.30pm. 01179 877877 / bristololdvic.org.uk.

## 'A FINE BRIGHT DAY TODAY'

27 March - 1 April

Studio Theatre, Ashley Road, SALISBURY, SP2 7TN. 7.30pm. £12 / £8. studiotheatre.org.uk. "Warm and funny play exploring love in later life."



## 'DANGEROUS GAMES'

29 March - 2 April

Multiple secret locations, starting at The Gloucester, 85 Esplanade, WEYMOUTH, DT4 7AT. 7.30pm. £15 / £10. teatrovivo.co.uk. "A new generation of libertines are throwing away the rule book and some lucky and intrepid locals are invited to their party - a celebration of survival, love and human connection, and a night full of intrigue, scandal, music, dancing, and mischievousness!"



## Callum Patrick Hughes: Thirst

"A show about love - love of pubs, love of community, love of family and a reminder that not everything you love is necessarily good for you."

**5 March:** The Gaggles of Geese, BUCKLAND NEWTON, DT2 7BS. 6.30pm. £5. 01300 345249 / artsreach.co.uk.

**17 March:** Village Hall, BROOMFIELD, TA5 2EQ. 7pm. £10. 07400 428586.

## FRANKIE BOYLE: 'LAP OF SHAME'

30 March

Lighthouse, 21 Kingland Road, POOLE, BH15 1UG. 7pm. 01202 280000. "Frankie Boyle telling jokes. Good jokes. About terrible things. In your terrible town."

## 'ROSE'

30 March

Lighthouse, 21 Kingland Road, POOLE, BH15 1UG. 8pm. 01202 280000 / lighthousepoole.co.uk. See 9 March.

## 'IF YOU FALL'

5 - 15 April

Bristol Old Vic, King Street, BRISTOL, BS1 4ED. 3 and 8pm. 01179 877877 / bristololdvic.org.uk.

## 'ZOG'

5 - 16 April

Bristol Old Vic, King Street, BRISTOL, BS1 4ED. 10.30am, 1.30, 3.30 and 4pm. bristololdvic.org.uk.

## MARCUS BRIGSTOCKE:

### 'ABSOLUTE SHOWER'

18 April

Bristol Old Vic, King Street, BRISTOL, BS1 4ED. 7.30pm. 01179 877877 / bristololdvic.org.uk.



## 'MAKE ME DANCE'

19 April

School Hall, GILLINGHAM, SP8 4QR. 7pm. £10 / £6. 01747 213023 / artsreach.co.uk. "Immersive dance theatre production from the acclaimed Norwegian company Panta Rei Danseteater."

## 'ONE MAN AND HIS COW'

24 April - 5 May

Bristol Old Vic, King Street, BRISTOL, BS1 4ED. 6.30, 8 and 9pm. 01179 877877 / bristololdvic.org.uk. "A rural romp featuring a multitude of agricultural antics and farmyard frolics."

## 'JULIUS CAESAR'

26 - 29 April

Rondo Theatre, BATH, BA1 6RT. 7pm. £14. rondotheatre.co.uk.

make

greyclay

radio.com

the soundtrack to your so-called life

a 24/7 salad of dark electronic and obscure experimental sound

LITTLE BOX ROOM

NEW WORK: March - April 2023

SEE WEBSITES FOR DATES & OPENING TIMES

STUDIO & DISPLAY

RACHEL YOXALL-JAMES

ROBERT LEE

Nº2 Bath Street  
Frome. 07493 943845  
www.littleboxroom.com

# Evolver Prize 2023

First Prize £1,000 + Evolver Magazine 132 Front Cover

CALLING ALL ARTISTS!

<b>EVOLVER MAGAZINE</b>

ARTISTS, PHOTOGRAPHERS and DESIGNERS are invited to submit actual cover size 2D work in any media for selection for the **FRONT COVER OF EVOLVER MAGAZINE 132** (July and August 2023 issue) + **£1,000**

The judges will also select an additional 49 WORKS for a **TOP 50 EXHIBITION** at Yeovil Art Space (15 July - 26 August 2023) and publication in EVOLVER MAGAZINE 132

JUDGES:

**Simon Barber** (Editor, Evolver)

**Naomi Kendall** (Winner, Evolver Prize 2022)

**Zoe Li** (Artistic Director, Yeovil Art Space)

**Dave Watts** (Photographer)

**DEADLINE: THURSDAY 18 MAY 2023**

Further information:

[evolver.org.uk/evolverprize](http://evolver.org.uk/evolverprize)

[prize@evolver.org.uk](mailto:prize@evolver.org.uk)



**YEOVIL  
ART SPACE**

NAME	
ADDRESS	
	POSTCODE
TELEPHONE	EMAIL

## Evolver Prize 2023 Entry Form

TITLE OF WORK	MEDIUM	SELLING PRICE *
1		
2		
3		

SUBMISSION FEE (£10 PER WORK): £

\* Yeovil Art Space will take a 30% commission from this price if the work is exhibited and sold

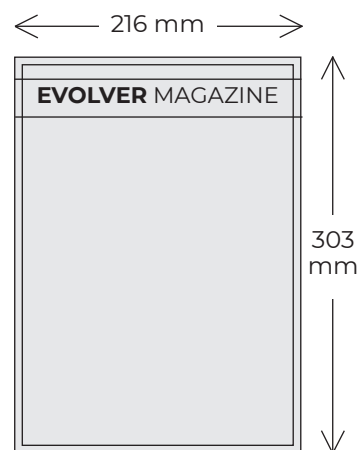
☐ I HAVE PAID ONLINE AT [PAYMENTS.EVOLVER.ORG.UK](http://PAYMENTS.EVOLVER.ORG.UK) AND MY REFERENCE NUMBER IS \_\_\_\_\_  
We accept payments by credit / debit card online at [payments.evolver.org.uk](http://payments.evolver.org.uk)  
Alternatively, go to [evolver.org.uk](http://evolver.org.uk) and click on the Evolver Prize heading

☐ I HAVE PAID OVER THE PHONE **01935 808441** AND MY REFERENCE NUMBER IS \_\_\_\_\_  
We accept payments by credit / debit card over the phone, Monday - Thursday, 9am - 4pm

Send **ARTWORK + ENTRY FORM + SAE FOR RETURN OF ARTWORK** to: EVOLVER PRIZE 2023, EVOLVER MEDIA, 8 BUCKLAND ROAD, PEN MILL TRADING ESTATE, YEOVIL, SOMERSET BA21 5EA

**DEADLINE: THURSDAY 18 MAY 2023**

☐ Please tick box if you do not wish to be added to the Evolver Magazine and Yeovil Art Space mailing lists



### SUBMISSIONS

The image size of each submitted work must measure 216 x 303 mm (the actual size of our front cover plus an extra 3 mm all round)

*The work should be an unframed original artwork or high quality print that can be sold at the exhibition*

Up to 3 works may be submitted

*A submission fee of £10 per work will be charged*

Please also supply a stamped addressed envelope for the return of your artwork

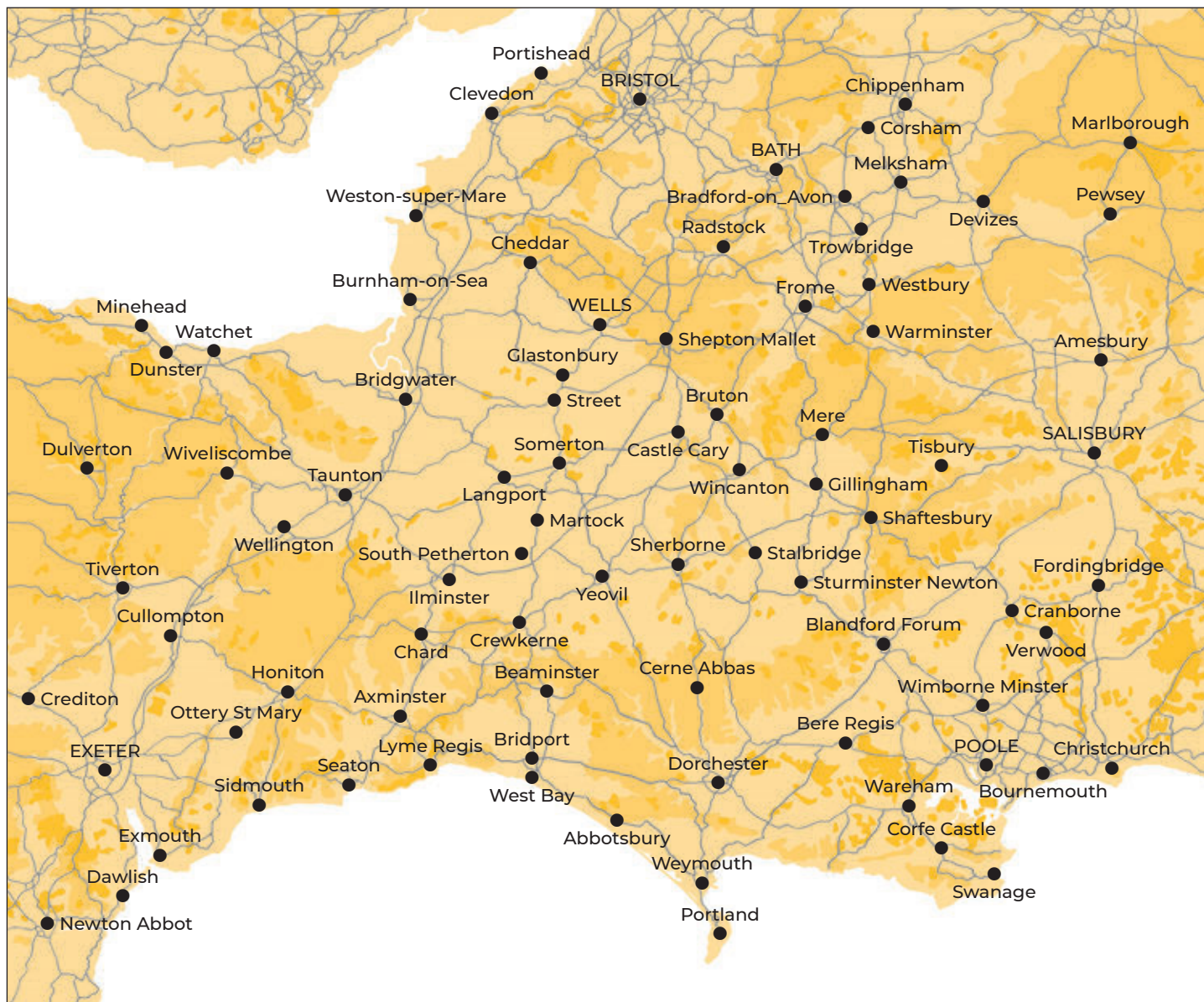
### PLEASE NOTE

The judges will definitely not be looking for a particular style of work  
*The work submitted should be anything that you believe would make a great front cover*



# EVOLVER MAGAZINE

## WESSEX



Follow **EVOLVER** MAGAZINE on Instagram

evolvermagazine



### EVOLVER MAGAZINE

THE WESSEX ARTS AND CULTURE GUIDE

Editor SIMON BARBER

Assisted by SUZY RUSHBROOK

News Editor SUZY RUSHBROOK  
suzy@evolver.org.uk

Evolver Writer FIONA ROBINSON  
fionarobinson.com

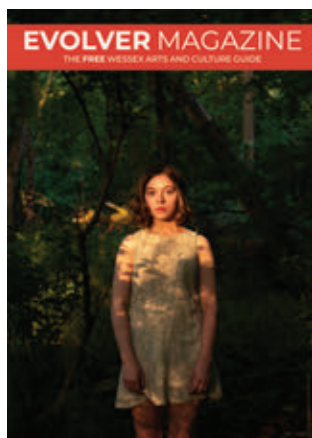
Graphic Design SIMON BARBER

Website TOR NEW MEDIA tornewmedia.co.uk

Front Cover  
'PHOEBE, VALE, 2020' by ROBERT DARCH

### EVOLVER MEDIA

8 BUCKLAND ROAD, PEN MILL TRADING ESTATE,  
YEovil, SOMERSET BA21 5EA



Email [simon@evolver.org.uk](mailto:simon@evolver.org.uk)

Telephone 01935 808441

Website [evolver.org.uk](http://evolver.org.uk)

Instagram [evolvermagazine](https://www.instagram.com/evolvermagazine)

Published by EVOLVER MEDIA LIMITED

Pre-Press by FLAYDEMOUSE  
01935 479453 / [flaydemouse.com](http://flaydemouse.com)

Printed by STEPHENS & GEORGE  
[stephensandgeorge.co.uk](http://stephensandgeorge.co.uk)

Distributed by ACOUSTIC  
07397 853006 / [acousticdistribution.co.uk](http://acousticdistribution.co.uk)

**DEADLINE FOR EVOLVER MAGAZINE 131**

May and June 2023

FRIDAY 7 APRIL

# Outlets and Sponsors

**EVOLVER MAGAZINE** is available **FREE** at the following Wessex outlets:

ABBOTSBURY: Abbotsbury Studio, Dancel Gallery. AXMINSTER: Archway Bookshop, Axminster Arts Café, Sublyme Café. BATH: Bath Artists' Studios, Beaux Arts, The Bell Inn, The Edge / ICIA, Holburne Museum of Art, Michael Tippett Centre, University of Bath, Victoria Art Gallery. BEAMINSTER: Little Toller Books. BLANDFORD: Blandford Fashion Museum, Bryanston Arts Centre, Forum Café, Forum Framers. BOSCOMBE: Artcetera. BOURNEMOUTH: All Fired Up, Miramar Hotel, Pavilion Dance, Royal Bath Hotel, Russell-Cotes Museum & Art Gallery. BOWER HINTON: The Hollies Hotel. BRADFORD ON AVON: Wiltshire Music Centre. BRIDGWATER: Bridgwater Arts Centre, Clayhill Arts, Engine Room. BRIDPORT: Beach & Barnicott, Bridport Arts Centre, Bridport Old Books, The Bull Hotel, Clocktower Music, Literary and Scientific Institute, Lyric Theatre. BRISTOL: Arnolfini, Bocabar, The Bristol Artisan, Bristol Beacon, Bristol Fine Art, Centrespace, Clifton Fine Art, Create Centre, Folk House, Jamaica Street Artists, Lime Tree Gallery, Bristol Old Vic, PRSC Gallery, RWA, Spike Island, St George's, Tobacco Factory, Trinity Centre, UWE, Watershed. BROADWINDSOR: Redlands Yard. BRUTON: At The Chapel, Hauser and Wirth. BUDLEIGH SALTERTON: Brook Gallery. BURNHAM ON SEA: Princess Theatre & Arts Centre, Seabreeze Gallery. CASTLE CARY: Bailey Hill Bookshop, David Simon Gallery, Trowbridge Gallery. CHARD: Art Café, Barleymow's, Hornsbury Mill Hotel. CHARLTON: Glebe Gallery. CHARMINSTER: Flux Art Supplies. CHEDDAR: Cheddar Art School, Sketch Café. CHEDDON FITZPAINE: Hestercombe Gallery. CHESIL BEACH: Fine Foundation Centre. CHIPPENHAM: Chippenham Museum. CHRISTCHURCH: Hatch Gallery, Hayloft Gallery, Red House Museum, Regent Centre. CLEVEDON: Fizz Gallery, Studio 3. CORFE CASTLE: Boilerhouse Gallery, Gallery 41, Morton House Hotel, Village Stores. CORSHAM: Pound Arts. CREWKERNE: Art4All / ArtyCrafty. CROCKERTON: Bull Mill Arts. CROWCOMBE: Halsway Manor. CULLOMPTON: Cullompton Community College. CULMSTOCK: The Strand Stores. DEVIZES: Wiltshire Museum. DORCHESTER: Dorchester Arts, Duke's, Frank Herring & Sons, Gallery on The Square, The Little Keep, Vinyl Van. EAST LAMBROOK: East Lambrook Manor Gardens. EXETER: Academy of Music, Barnfield Theatre, The Cavern, Corn Exchange, Exeter School of Art, Glorious Art Cafe, Phoenix Arts Centre, Royal Albert Memorial Museum, Southgate

Gallery. FROME: Bat Print Studio, Black Swan Arts, Cheese and Grain, Fiat Lux, Merlin Theatre, Mount, Raves From The Grave, Rook Lane Arts, Rise Centre, Whittox Gallery. GILLINGHAM: The Idea Works, Slade Centre. GLASTONBURY: Abbey Muse Gallery, Bocabar, Facets Of Avalon, Glastonbury Galleries, Heart Of The Tribe Gallery, Red Brick Building, Rural Life Museum. HEMYOCK: Healthy Living Centre. HESTERCOMBE: Hestercombe Gallery. HIGHCLIFFE: In The Frame. HOLTON HEATH: Holton Lee. HONITON: The Beehive, Boston Tea Party, Hybrid Gallery, School Of Art And Wellbeing, Strummer Pink, Thelma Hulbert Gallery. ILMINSTER: Courtyard Gallery Cafe, Dillington House, Ilminster Arts Centre. KEYNSHAM: Chocolate Quarter. LANGPORT: 4 Every Cloud, Art Tea Zen, Hanging Gallery, Shakspeare Glass. LYME REGIS: Blue Lias, Coombe Street Gallery, Fine Art Framing, Marine Theatre, Studio 19. LYTCHETT MINSTER: Barn Cafe, Courtyard Craft Centre. MARLBOROUGH: Framemakers, Rabley Contemporary Drawing Centre. MARTOCK: Martock Gallery Yandles Cafe. MILTON ABBAS: Dorset Crafty Barn, Luccombe Hub. MINEHEAD: Courtyard Framing, Leo Davey Gallery, Regal Theatre. MORCOMBELAKE: Artwave West. MUCHELNEY: John Leach Gallery. NEW MILTON: Forest Arts. NEWTOWN: R. C Arts. NORTH CURRY: Community Café. OTTERTON: Otterton Mill. PENN HILL: Josephine Wall Shop. PEWSEY: McNeill Gallery. POOLE: Arts University Bournemouth, Boiler Room Records, Bournemouth University Atrium Gallery, Guildhall Gallery, Lighthouse, Gallery Upstairs, Originals, Poole Museum, Poole Violins, Towngate Gallery And Framing. PORLOCK: Churchgate Gallery, Melody Art. PORTLAND: B-Side Outpost, White Stones. POUNDBURY: Gallery On The Square, Store 6. SALISBURY: City Hall, Fisherton Mill, Framemakers, Noble Art Supplies, Salisbury Arts Centre, Salisbury Museum, Salisbury Playhouse, Studio 53, Wiltshire Gallery, Young Gallery. SEATON: Arts Café, Savooni Art Gallery. SEAVINGTON: Village Shop. SHAFESBURY: The Cygnet, Grosvenor Hotel, Pictureframes, Shaftesbury Arts Centre. SHEPTON MALLET: One Craft Gallery. SHERBORNE: Artslink, Elementum Gallery, New Digby Hall, Old Barn Framing Gallery, Winstone's. SIDMOUTH: East Devon Art Academy, Flo and Us, Kennaway House, Winstone's. SOMERTON: ACE Arts, Gifted Company & Gallery Coffee Shop. SOUTH CADBURY: Chapel Cross Tea Rooms. SOUTH PETHERTON: David Hall. STALBRIDGE: Dike & Sons. STOBOROUGH: Furzebrook Studios. STOKE ST GREGORY: Willow &

Wetlands Centre. STOURHEAD: First View Gallery. STREET: Millfield School Atkinson Gallery, Strode Theatre. STURMINSTER NEWTON: The Exchange, Poet's Corner, Wessex Photographic. SWANAGE: 4Matt Framers and Gallery, Durlston Castle, Hollinghead Studio Gallery, L'Artishe Gallery, Mowlem Theatre, Mulberry Bush Gallery, Purbeck New Wave Gallery, Quarr Gallery, Sansom Gallery. SYMONDSBURY: Sou'-Sou'-West. TAUNTON: Brewhouse Theatre, CIC CIC, Fine Art And Framing, Jane Amour, Mount Somerset Hotel, Quantock Art And Framing, Queen's College, Tacchi-Morris Arts Centre, University Centre Somerset. TINCLETON: Tincleton Gallery. TISBURY: Messums Wiltshire. TIVERTON: Lantic Gallery. TROWBRIDGE: Arc Theatre, Court Street Gallery, Drawing Projects, The Lamb, Trowbridge Arts, Trowbridge Museum. VERWOOD: Campbell & Rose Gallery, The Hub. WAREHAM: Creative Gallery, Priory Hotel, Rex Cinema. WATCHET: East Quay, Watchet Gallery. WELLINGTON: Old Brick Workshop. WELLS: A2 Gallery, Andelli Art, Bishop's Eye, Good Earth, Heritage Courtyard Studios, Somerset Guild of Craftsmen Gallery and Shop. WEST BAY: Sladers Yard. WEST COKER: Lanes, Old School Room. WESTHAY: Somerset Crafts. WESTON-SUPER-MARE: Frame Station, Playhouse, Weston College. WEYMOUTH: Weymouth College, Weymouth Pavilion. WILLITON: Breeze Art Gallery. WIMBORNE: Allendale House, Square Records, Walford Mill Craft Centre. WINSOMBE: Sidcot Arts Studio. WIVELISCOMBE: Community Office. WOODBURY: Woodbury Studio Gallery. WORTH MATRAVERS: Burngate Stone Centre. WRINGTON: Barleywood Studios. YEOVIL: Octagon Theatre, Yeovil Art Space. YETMINSTER: Old School Gallery.

Plus selected TOURIST INFORMATION CENTRES and LIBRARIES throughout Wessex

## EVOLVER SPONSORS

ACE Arts  
Acoustic Distribution  
Artcetera  
B-Side  
Black Swan Arts  
Boilerhouse Gallery  
Bridport Arts Centre  
The Creative Gallery  
Dorset Visual Arts  
East Quay  
Gallery on the Square  
Heart of the Tribe Gallery  
Lyme Bay Arts  
Shaftesbury Arts Centre  
The Slade Centre  
Sladers Yard  
Somerset Art Works  
Tincleton Gallery  
The Vanner Gallery  
Walford Mill



Our **EVOLVER SPONSORS** make Evolver Magazine possible. We couldn't do it without their ongoing support and adverts, so we make sure they get priority coverage in these pages.

If you'd like to join them, please email [simon@evolver.org.uk](mailto:simon@evolver.org.uk) to find out about our Sponsorship offer (for example our quarter page Evolver Sponsors pay £175 instead of £250 for each bi-monthly advert).



**OD ARTS  
FESTIVAL**

# Still And Still Moving

**26 - 28 May 2023**

A three day art festival across East Coker  
and West Coker, Somerset

[odartsfestival.co.uk](http://odartsfestival.co.uk)

**OSR/  
PROJ  
ECTS**



Supported using public funding by  
**ARTS COUNCIL  
ENGLAND**