

EVOLVER MAGAZINE

THE **FREE** WESSEX ARTS AND CULTURE GUIDE



Lines of Empathy

C L O S E

3 June – 22 July 2023

A group show bringing together hand-drawn work on paper by 17 artists working in Britain today, curated by artist Giulia Ricci

Special opening event: 2pm-5pm, Saturday 3 June, featuring artists in conversation and a performance by Carali McCall

Open by Appointment, book online at www.close ltd.com

Thursday - Friday 10am - 3pm

Saturday 10am - 1pm

Exhibiting Artists: Fay Ballard, Duncan Bullen, Lucinda Burgess, Helen Cass, Rachel Duckhouse, Mary Griffiths, Simon Hitchens, Louise Hopkins, Carali McCall, Onya McCausland, Anna Mossman, David Murphy, Peter Peri, Kathy Prendergast, Wendy Smith, Giulia Ricci and Kate Terry

Close Ltd Close House, Hatch Beauchamp, Somerset TA3 3AE // www.close ltd.com // [@close ltd](https://www.instagram.com/close ltd)

ONE THOUSAND IDEAS ONE AMAZING ISLAND



b-side festival 2023

THIS LAND

7-10 September
PORTLAND, DORSET

+ b-side fringe 7-17 Sept

Explore incredible landscapes and fantastic artworks with **b-side** as your guide



Photo: Chris Hemby

PENNSYLVANIA CASTLE ESTATE
Isle of Portland

Dorset
Council

Heritage
Fund

ARTS COUNCIL
ENGLAND

VISUAL ART • SOUND • LIVE ART • FILM

B-SIDE.ORG.UK

EVOLVER MAGAZINE 131

May and June 2023



Exhibit A

Vivienne Beaumont: Pricked Awake

Machine embroidery, 58 x 50 cm, 2022

ARTIST'S STATEMENT: "The ephemerality and cyclical nature of life is at the core my textile practice. My work sits within the genre of narrative stitched textiles. It references the figurative, the mythological, nature, female archetypes and the theme of transformation. The portrait becomes a shadow of someone who once was, their fleeting youth and beauty symbolised in flowers. Harvest, seeds, barley and pomegranates represent both life force and loss. Archetypal theory and mythology use the goddess to denote the cyclical nature of female life. My practice uses machine embroidery and print to tell this personal and universal story through symbol and thread. Vanitas and transformation are symbolised in *Pricked Awake* by thorns and briar roses. The maiden awakes, pricked awake by the advancing thorns."

'SEEDS, FLOWERS, AND FLOWING HAIR'

17 June - 22 July

ACE Arts, Market Place, SOMERTON, TA11 7NB. Tuesday - Saturday 10am - 5pm. 01458 273008 / acearts.co.uk.

viviennebeaumont.net

Headlines

May and June 2023



Clockwise from bottom left: AMANDA WALLWORK & KIT BENWELL, ANDREW WHITTLE, DENMAN & GOULD, SARAH HOUGH, BRENDON MURLESS

West Dorset Walkers Welcome

West Dorset Walkers Welcome combines West Dorset Coast Path improvements and the artist commissioned Parish Boundaries Marker Project.

The Dorset Coast path is enjoyed by local people and visitors as a key way to experience the stunning coastal landscape, and the coastal communities through which it passes. The underlying geology and hydrology of the coastline provide a stunning topography which is subject to dynamic and sometimes rapid change, resulting in some difficult locations to navigate for the everyday walker.

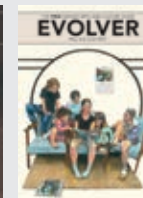
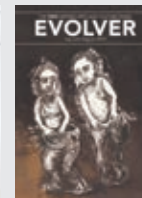
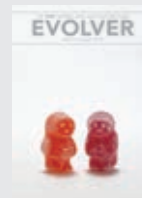
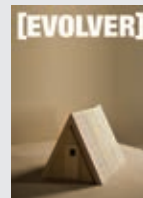
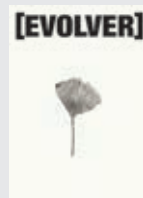
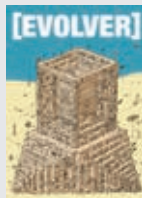
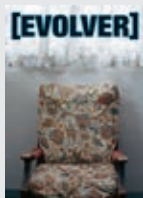
Local artists were first commissioned in 2019 and again in 2021 to develop contemporary parish boundary artwork pieces to reveal to the walker where and when they pass from one parish to another when walking along the West Dorset Coast Path. Each artist was provided with a brief - information about the parishes

to inspire the theme and instruction that each piece had to be made from materials robust and in keeping with their location. It also specified that each marker must state the name of each parish, the number in its sequence along the coast path (from Dorset / Devon border) and the year of the project.

These pieces are collaborations between the artist, landowners and craftspeople to produce artwork pieces that represent the heritage of that particular parish boundary, using a range of materials such as, stone, wood, metal. This project has produced 16 unique, beautiful parish boundary markers demonstrating high quality expertise in both arts and crafts.

The project was led by Dorset Council and coordinated by Dorset Coast Forum as part of the Dorset Coastal Connections portfolio.

dorsetcoast.com/west-dorset-walkers-welcome



Evolver Prize 2023

First Prize £1,000 + Evolver Magazine 132 Front Cover

SEE PAGE 33



Old
Barn
Framing
Gallery



YEOVIL
ART SPACE

Headlines



ChamberMusicBox

ChamberMusicBox was founded in 2016 when a group of leading international musicians came together from across Europe to perform a series of chamber music concerts in London.

Its artistic directors, violinist Yuri Kalnits and cellist Julia Morneweg, had a vision to explore and perform a vast spectrum of exciting repertoire with their like-minded and exceptionally talented friends, and for audiences to be part of that shared experience.

With countless appearances on the big international stages, dozens of prizes at some of the world's most prestigious competitions, and a host of acclaimed recordings between them, this ever-growing community of outstanding European musicians thrives on creating concert programmes as diverse as they are unique.

2 June: Bridport Arts Centre, 9 South Street, BRIDPORT, DT6 3NR. 11.30am. £14. 01308 424901 / bridport-arts.com.

2 June: Ilminster Arts Centre, East Street, ILMINSTER, TA19 0AN. 7.30pm. £18. 01460 54973 / concertsinthwest.org.

3 June: The Dance House, Gouldsbrook View, North Street, CREWKERNE, TA18 7AL. 7.30pm. £18. 01460 75928 / concertsinthwest.org.

4 June: St Laurence Church, Church Street, UPWEY, DT3 5QE. 3pm. £18. concertsinthwest.org.



CAROLYN LEFLEY 'NINESPRINGS'

Yeovil Art Space: View of Yeovil

Yeovil Art Space's upcoming *View of Yeovil* exhibition collects stories from the town community and telling the history of photography through heritage collections in Yeovil. Carolyn Lefley, photographer and artist, is working in collaboration with Yeovil Art Space and the many partners involved in the *Story of Yeovil* project to produce the exhibitions, displaying more than 100 photographs from professional artists, the local community and students from Yeovil College.

Inspired by the South Somerset Heritage Collection, which has over 6000 photographs reflecting the heritage of Yeovil, the art charity sent out an open call inviting members of the Yeovil community to help create a contemporary archive of photographs made in and about Yeovil. Submitted on social media via #ViewOfYeovil a selection of photographs from members of the community will be printed and displayed in the gallery alongside those of professional photographers.

The exhibition will be hosted in a new second venue for Yeovil Art Space in the town's Quedam shopping centre, where the aim is to create a new cultural space bringing heritage and contemporary art together, marking out a new model for a gallery space which supports culture and regeneration. This year's Evolver Prize exhibition will be shown in the new venue.

View of Yeovil is part of *Story of Yeovil*, a series of exhibitions and events looking at the past, present and future, gathering stories from diverse perspectives through creative activities and three main themes: *View of Yeovil*, *Sound of Yeovil* and *Taste of Yeovil*.

'VIEW OF YEOVIL'

31 May - 8 July: Yeovil Art Space, 13 - 15 Vicarage Walk, Quedam Shopping Centre, YEOVIL, BA20 1EU. Wednesday - Friday 10am - 4pm, Saturday 10am - 5pm. yeovilartspace.uk/viewofyeovil.



The Life that Springs

Aquatint, carborundum, deep etching, linocut, woodcut & screen prints

Anita Klein RE • Fred Cuming RA
Martyn Brewster ARE • Merlyn Chesterman RE
Sally McLaren RE
Yo Thom ceramics • Petter Southall furniture
25 March - 13 May 2023

PHILIP SUTTON RA Solo Show
Paintings from a lifetime, new work, works on paper, ceramics, posters
20 May - 8 July 2023

SLADERS YARD Contemporary Art & Craft Gallery
West Bay DT6 4EL Open Wednesday - Saturdays 10am - 4.30pm
CAFÉ SLADERS Superb seafood also open Sundays 10 - 3.30pm
@sladersyard sladersyard.co.uk t: 01308 459511



OD ARTS FESTIVAL

Still And Still Moving

26 - 28 May 2023

A three day art festival across East Coker and West Coker, Somerset

odartsfestival.co.uk

OSR/PROJECTS

ARTS COUNCIL ENGLAND

VIEW OF YEOVIL

STORY OF YEOVIL

Heritage Fund



31 May - 8 July
EXHIBITIONS, EVENTS, TALKS

YEOVIL ART SPACE
13 - 15 Vicarage Street, Quedam Shopping Centre, Yeovil, Somerset BA20 1EU

Share your view through contemporary art and heritage

YEOVIL ART SPACE | LIVE Bristol | Yeovil Refresh | South Somerset District Council | Yeovil Virtual Museum | SSHC

Tincleton Gallery

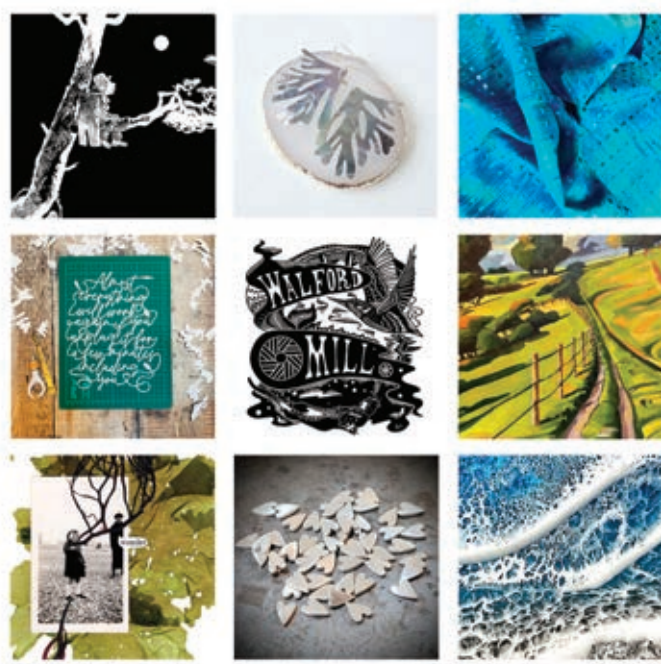
contemporary fine art in Dorset

Spring exhibition | gallery & guest artists
Fri 10 February - Fri 21 July



"Harvest Mice" etching by Jane Chapman

The Old School House, Tincleton, near Dorchester, DT2 8QR
Friday / Saturday / Sunday / Monday • 10am – 4pm
01305 848909 • tinctongallery.com



WALFORD MILL

Contemporary art and craft gallery in a spectacular 16th Century Mill

EXHIBITIONS | ADULT AND CHILDREN'S WORKSHOPS
OPEN STUDIOS | INDEPENDENT SHOPS
COURTYARD MARKETS | CAFE

OPEN - WEDS - SAT 10-5PM - SUN 11-4PM
Knobcrook Road, Wimborne, Dorset, BH21 1NL
www.walfordmillcrafts.co.uk
@walfordmill

Headlines



The Dorset Art Map

The Dorset Art Map features the network of galleries, venues, organisations, businesses and artists making the Arts happen in the county, and is the first in a series of county art maps to be published by Evolver. Building on the success of Evolver Magazine and the Evolver Prize, this new initiative was kicked off with a YES PLEASE from all Evolver Sponsors in Dorset, and following a promotional launch in February, the wider community of arts movers and shakers in the county signed up.

The Evolver team have now started work on The Somerset Art Map, due for publication this Autumn, with The Wiltshire Art Map to follow in Spring 2024 and, if all goes according to plan, The Devon Art Map in Autumn 2024 and The Avon Art Map in Spring 2025. Each map will be updated every year.

Minehead-based artist Leo Davey (Winner of the Evolver Prize in 2010 and 2020) was commissioned to paint a Wessex map and produce front cover illustrations for each map in the series.

The Dorset Art Map has been made possible by all Evolver Sponsors in Dorset: Acoustic Distribution, Artcetera, B-Side, Boilerhouse Gallery, Bridport Arts Centre, The Creative Gallery, Dorset Visual Arts, Gallery On The Square, Lyme Bay Arts, Shaftesbury Arts Centre, The Slade Centre, Sladers Yard, Tincleton Gallery and Walford Mill.

If you would like a copy of The Dorset Art Map and can't pick up a copy at one of our Evolver outlets in Dorset (and surrounding 20 miles) please send a C5 (A5) stamped addressed envelope to: The Dorset Art Map, Evolver Media, 8 Buckland Road, Pen Mill Trading Estate, Yeovil, Somerset BA21 5EA.

And if you are making the Arts happen in Somerset, please email simon@evolver.org.uk to book your place on The Somerset Art Map.

Diary Dates



DERVISH, Priddy Folk Festival

EVOLVER PRIZE 2023

Deadline: Thursday 18 May

evolver.org.uk/evolver-prize

EXETER CONTEMPORARY OPEN

Deadline: Sunday 11 June

exetercontemporaryopen.com

RWA OPEN 170

Deadline: Wednesday 5 July

rwaopen.co.uk

PRIDDY FOLK FESTIVAL

7 - 9 July

priddyfolk.org

FROME OPEN ART TRAIL

8 - 16 July

frome-open-art-trail.com

THE DORSET OPERA FESTIVAL

24 - 29 July

dorsetopera.com

B-SIDE FESTIVAL

7 - 10 September

b-side.org.uk

DEVON OPEN STUDIOS

9 - 24 September

devonopenstudios.co.uk

INSIDE OUT

15 - 24 September

activateperformingarts.org.uk

SOMERSET OPEN STUDIOS

16 September - 4 October

somerstartworks.org.uk

David Shillinglaw x Lily Mixe

MEET ME IN THE GARDEN | RENDEZ-VOUS DANS LE JARDIN

5 May - 24 Jun 2023

The Vanner Gallery
45 High Street
Salisbury
01722 501 551
10am - 5pm Tuesday to Saturday
vannergallery.com



Visual Arts

May and June 2023



AMANDA WALLWORK 'LOST FIELD 1503' (Oil, graphite and plaster, 25 x 31 cm, 2019)

Earth / Ground

"This exhibition brings together two artists whose work has been deeply influenced by the Dorset landscape, prehistory and deep time. Alan Wallwork (d.2019) made his name in the early 1960s with his distinctive hand built sculptural forms. He was part of an exciting and experimental period that grew up around the Central School and Goldsmiths College in the 1950s, and a new generation of artists who challenged the sculptural possibilities of clay. He spent most of his working life in Dorset, increasingly influenced by shapes, colours and textures to be found in the coast and countryside. His daughter Amanda uses drawing, painting, and mapping to explore our experience of landscape - a quest for a real understanding of what lies beyond the aesthetic. Influenced by childhood experiences of visits to archaeological sites and museums and growing up watching her father manipulate clay. She is fascinated by what you can read in a landscape - interpreting the traces of past human activity and what it reveals about our relationship with the earth. More recently she has been working directly with earth and rock specimens, to further explore concepts of deep time."

13 May - 10 June: Bridport Arts Centre, 9 South Street, BRIDPORT, DT6 3NR. Tuesday - Saturday 10am - 4pm. 01308 424901 / bridport-arts.com.

THE PHOTO OPEN EXHIBITION Until 1 May

RWA, Queen's Road, Clifton,
BRISTOL, BS8 1PX. 10am - 4pm. £8.
0117 973 5129 / rwa.org.uk.

JEM SOUTHAM: 'A BEND IN THE RIVER'

Until 1 May

RWA, Queen's Road, Clifton,
BRISTOL, BS8 1PX. 10am - 4pm. £8.
0117 973 5129 / rwa.org.uk.

'SPRING TIME'

Until 1 May

Sou'-Sou'-West Arts Gallery,
Symondsbur Estate, BRIDPORT,
DT6 6HC. 10.30am - 4.30pm. 01308
301326 / sousouwest.co.uk.

SHAFTESBURY ARTS CENTRE ART GROUP

Until 2 May

The Gallery, Shaftesbury Arts
Centre, Bell Street, SHAFTESBURY,
SP7 8AR. Monday - Saturday 10am -
4pm. 01747 855243.

BRISTOL 1904 ARTS SOCIETY

Until 7 May

The Red Lodge, Park Row, BRISTOL,
BS1 5LJ. 10.30am - 4.30pm. 0117 927
3807 / bristol1904arts.org. "Annual
exhibition featuring approximately
100 outstanding paintings in all
media by resident artists, with
some submitted by guest artists."

'A CELEBRATION OF CERAMICS'

Until 7 May

Seaglass Gallery, 6 Brookfield
Cottages, The Strand, LYMPSTONE,
EX8 5ES. 10.30am - 4pm (Closed 2
May). seaglassgallery.co.uk.

NORTH SOMERSET ARTS WEEK

Until 8 May

38 venues across NORTH
SOMERSET. northsomerarts.org.
"Contemporary and traditional art
by over 200 local artists, from
ceramics to textiles, painting to
sculpture - there's something for
everyone to enjoy."

PETER LIVERSIDGE: 'RURAL TIME'

Until 8 May

East Quay, WATCHET, TA23 0AQ.
Tuesday - Sunday 10am - 6pm.
eastquaywatchet.co.uk.



SEEDS, FLOWERS, AND FLOWING HAIR

Vivienne Beaumont

17 June – 22 July

ACEARTS

Market Place, Somerton, Somerset TA11 7NB
Tuesday - Saturday 10am - 5pm
01458 273008 • acearts.co.uk

Visual Arts

POOLE PRINTMAKERS

Until 10 May

Fine Foundation Gallery, Durlston Country Park, SWANAGE, BH19 2JL. 10am - 5pm. durlston.co.uk.

KEN HUGHES: 'A RETROSPECTIVE'

Until 13 May

Chippenham Museum, 9 - 10 Market Place, CHIPPENHAM, SN15 3HF. Monday - Saturday 10am - 4pm. 01249 705020 / chippenham.gov.uk. "Exhibition showcasing the work of the influential artist and tutor Ken Hughes, who led the Bath Academy of Art's famous sculpture department for two decades."



'THE LIFE THAT SPRINGS'

Until 13 May

Sladers Yard, WEST BAY, Bridport, DT6 4EL. Wednesday - Saturday 10am - 4.30pm. 01308 459511 / sladersyard.co.uk. "Aquatint, carborundum, deep etching, linocut and woodcut prints by Anita Klein, Fred Cuming, Martyn Brewster, Merlyn Chesterman and Sally McLaren, plus ceramics by Yo Thom, and furniture by Petter Southall."

Above: Anita Klein 'Oak in Winter' (Linocut)

LOUISE LUTON: 'SAFARI'

Until 20 May

Fisherton Mill, 108 Fisherton Street, SALISBURY, SP2 7QY. Monday - Saturday 10am - 5pm. 01722 330667 / fishertonmill.co.uk. "Oil paintings and prints capturing the beauty and colours of Africa's iconic Masai Mara."

RWA ARTIST NETWORK

Until 21 May

RWA, Queen's Road, Clifton, BRISTOL, BS8 1PX. 10am - 4pm. 0117 973 5129 / rwa.org.uk.



ALEX KENNEDY 'WETLANDS'

Wylve Valley Art Trail

"The Wylve Valley Art Trail is an inspiring and eclectic festival of visual art and craft set in 73 venues across southwest Wiltshire: open studios and workplaces, galleries, art group exhibitions, student groups, virtual exhibitions and other fascinating events including 'hands on' activities, demonstrations, workshops and talks. This year there are over 250 exhibitors, ranging from award-winning artists with international reputations, to those just starting out on their creative journeys. This is a unique opportunity to view a wide range of artistic skills, from painting to print-making, furniture making to photography and sculpture to ceramics as well as contemporary art forms such as digital art, installation, video and art using recycled materials. The Wylve Valley Art Trail team is hugely proud that, in early 2022, Her Majesty The Queen approved the QAVS National Assessment Committee's recommendation that the volunteers of The Wylve Valley Art Trail should receive the prestigious Queen's Award for Voluntary Service (QAVS). This was one of the final awards made by Elizabeth II before her death in September 2022. Colourful and eye catching Wylve Valley Art Trail brochures are available at Tourist Information Centres, arts centres, libraries and many other places throughout the region."

WYLVE VALLEY ART TRAIL

Until 8 May

Locations throughout the WYLVE VALLEY, Wiltshire. 07730 400784 / wvat.co.uk.



ASHEN

LOTTE SCOTT

20 May – 25 June 2023



Davies Monaghan Klein

SQUINT

1 Jul - 10 Sept 2023

galleries | studios | shop | cafe

2 Bridge Street, Frome BA11 1BB



BLACKSWANARTS

01373 473980 | www.blackswanarts.org.uk

FREE ENTRY Registered Charity No. 292463



'PUDDLE' (Watercolour, 12 x 16 inches)

Moish Sokal: England to Savanna

"Sokal's new style, inspired by recent safari trips to Eastern Africa, shows the wild animal kingdom in contrast to scenes from England and trips he made abroad in the last 30 years."

3 June - 22 July: Malthouse Gallery, East Lambrook Manor Gardens, Silver Street, EAST LAMBROOK, South Petherton, TA13 5HH. Tuesday - Saturday 10am - 5pm. 01935 881350 / moishsokal.co.uk.

LEWIS PEAKE: 'NEW WORLDS'

Until 23 May

Mowlem Theatre, Shore Road, SWANAGE, BH19 1DD. Monday, Wednesday, Friday and Saturday 11am - 1.30pm, Monday - Saturday 6 - 10.30pm. themowlem.com. "Lewis Peake is a Swanage-based artist and illustrator working primarily with new media forms to construct futuristic narratives"

JULIA MANNING: 'THE DECLINE OF SOMERSET EELS'

Until 27 May

ACE Arts, Market Place, SOMERTON, TA11 7NB. Tuesday - Saturday 10am - 5pm. acearts.co.uk. "A series of 12 limited editioned relief prints, the artist raises awareness of the international decline of eels by telling their dramatic, unbelievable saga which unfolds annually in Somerset."

GARY FABIAN MILLER: 'ADORE'

Until 28 May

Arnolfini, 16 Narrow Quay, BRISTOL, BS1 4QA. Tuesday - Sunday 11am - 6pm. arnolfini.org.uk. "Adore reveals an artist of incredible patience - returning to capture the same grove of hawthorn trees throughout the seasons, year after year - and for whom the slowing of time has taken on a deep-rooted importance."

WILL I OM: 'COFFEE & INK'

Until 29 May

Heart of The Tribe Gallery, 74 High Street, GLASTONBURY, BA6 9DZ. Thursday - Monday 11am - 5pm. 01458 832167 / heartofthetribe.com. "Work created using the unusual medium of coffee."

'PARADISE FOUND: NEW VISIONS OF THE BLACKDOWN HILLS'

Until 3 June

Thelma Hulbert Gallery, Dowell Street, HONITON, EX14 1LX. Tuesday - Saturday 10am - 5pm. 01404 45006 / thelmahulbert.com. "Exhibition exploring the Blackdown Hills AONB through the artist's lens past and present, featuring the work of 36 contemporary artists alongside members of the Camden Town Group."

SANDRA PORTER: 'SIGNIFICANT FORM'

Until 18 June

The Whittox Gallery, Whittox Lane, FROME, BA11 3BY. Tuesday - Saturday 9am - 4pm, Sunday 10am - 4pm. thewhittoxgallery.com.

BATH SOCIETY OF ARTISTS

Until 24 June

Victoria Art Gallery, Bridge Street, BATH, BA2 4AT. Tuesday - Sunday 10.30am - 5pm. £7 / £6.50 / £2.50. victoriagal.org.uk. "This highly popular exhibition has been an annual gallery highlight for well over a century and showcases the best of the region's artistic talent."

HARRIET BOWMAN: 'MAYBE THEY HAD AN URGENT CALL'

Until 25 June

Exeter Phoenix, Gandy Street, EXETER, EX4 3LS. Monday - Saturday 10am - 5.30pm, Sunday 12noon - 6pm. 01392 667080 / exeterphoenix.org.uk. "New work in sculpture, photography and text."

'FAMILY LINES'

Until 26 June

Lighthouse, 21 Kingland Road, POOLE, BH15 1UG. Tuesday - Saturday 10am - 9pm. 01202 280000 / lighthousepoole.co.uk. "Work by seven artists spanning four generations of the same family."

20 May to 25 June: New paintings by Rob Adams and Sue Fawthrop



DAYS IN THE DORSET LANDSCAPE

GALLERY ON THE SQUARE

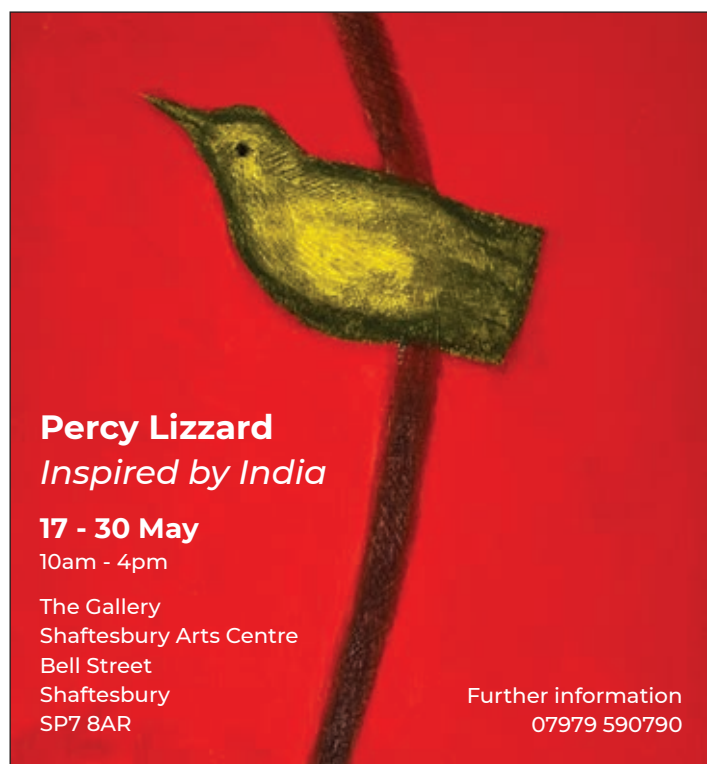
Queen Mother Square, Poundbury, Dorchester DT1 3BL

Mon-Sat, 9.30am to 5pm; Sundays: 10am to 4pm 01305 213322 www.gallerypoundbury.co.uk



Subscribe to
EVOLVER MAGAZINE
 online at
evolver.org.uk

Six bi-monthly issues for £25

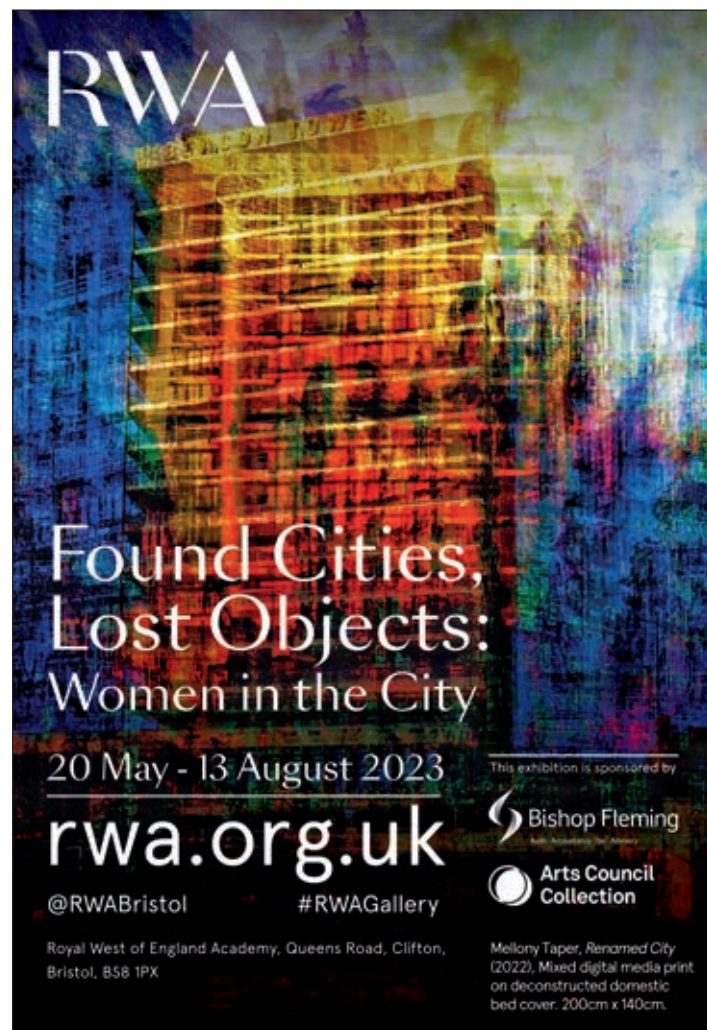



Percy Lizzard
Inspired by India

17 - 30 May
 10am - 4pm

The Gallery
 Shaftesbury Arts Centre
 Bell Street
 Shaftesbury
 SP7 8AR

Further information
 07979 590790




RWA
Call For Entries
 ANNUAL OPEN EXHIBITION 170
 The largest open exhibition in the south west

SUBMISSIONS OPEN
28 APRIL - 5 JULY 2023

£1000s in prizes • Show and sell your work in our galleries and online

rwaopen.co.uk

Exhibition dates:
 8 September 2023 - 14 January 2024

Royal West of England Academy,
 Queens Road, Clifton, Bristol, BS8 1PX



Image: 169 Annual Open Install, RWA, 2022. Photo@alicehendyphotography

England TO SAVANNA

Exhibition of New Watercolours by
Moish Sokal



Guarding the Prey

Watercolour 12" x 16"

The Malthouse Gallery

East Lambrook Manor Gardens, Silver Street, Somerset TA13 5HH

Saturday 3rd June - Saturday 22nd July

Tues to Sat • 10am to 5pm • moishsokal.co.uk • 01935 881350



Art Unlimited
The Gallery

CALL TO ARTISTS

Open Art Competition

Entries from 1st May to 31st July 2023

1st Prize £2500

For Full Terms and Conditions please visit:
www.art-unlimited.co.uk

In Conjunction with:



NORRSKEN

COFFEE & INK

AN EXHIBITION OF PAINTINGS BY WILLOM

27TH APRIL - 29TH MAY

OPENING DRINKS & MUSIC SATURDAY 29TH APRIL 1-4PM



ELSEWHERE

GEMMA TRICKEY & OLGA PIETRUSZKA

1ST JUNE - 24TH JULY



GALLERY OPEN DAILY 11.00 - 17.00 (CLOSED TUESDAYS & WEDNESDAYS)

01458 780046

Gallery@HeartofTheTribe.com

www.HeartofTheTribe.com

[f](https://www.facebook.com/HeartofTheTribeGallery) [i](https://www.instagram.com/HeartofTheTribeGallery) @HeartofTheTribeGallery

74 High Street, Glastonbury, BA6 9DZ



HEART OF
THE TRIBE
ART GALLERY

SCAN CODE
FOR MORE
EVENTS INFO



ART | ENERGY | COMMUNITY

Visual Arts

'DESIGN FOR LIFE: ART AND ARCHITECTURE PART 1'

Until 2 July

Hestercombe Gallery, Hestercombe Gardens, CHEDDON FITZPAINE, Taunton, TA2 8LG. 11am - 4pm. 01823 413923 / hestercombe.com. "Exhibition featuring work from Le Corbusier to the present day, exploring the historical intersection of art and architecture."



'SPRING EXHIBITION'

Until 21 July

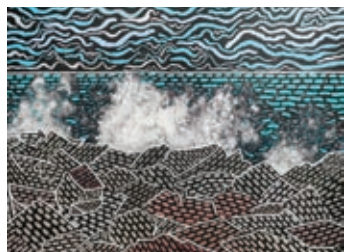
Tincleton Gallery, The Old School House, TINCLETON, near Dorchester, DT2 8QR. Friday - Monday 10am - 5pm. 01305 848909. "Mixed exhibition featuring gallery artists and special guests."

Above: Kim Pragnell 'Sunset Over Dunhelm Woods'

'IN HER OWN VOICE: THE ART OF LUCY KEMP-WELCH'

Until 1 October

Russell-Cotes Art Gallery and Museum, East Cliff Promenade, BOURNEMOUTH, BH1 3AA. Tuesday - Sunday 10am - 5pm. 01202 127249.

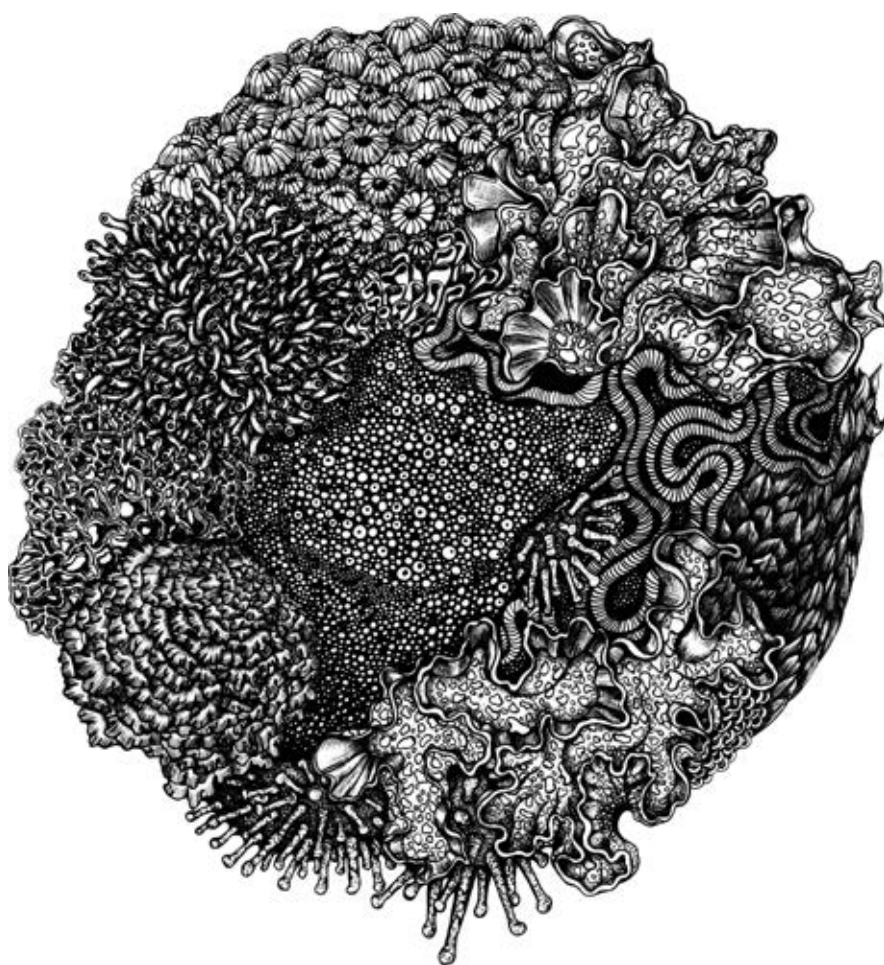


SARAH JANE ROSS: 'PRECIPICE?'

1 - 14 May

Sou'-Sou'-West Arts Gallery, Symonds Estate, BRIDPORT, DT6 6HG. 10.30am - 4.30pm. 01308 301326. "Contemporary landscape paintings."

Above: 'Crash'



LILY MIXE 'ROCKPOOL'

David Shillinglaw and Lily Mixe: Meet Me In The Garden

"This exhibition is a dance between two artists, a hybrid of styles and personalities. Sharing a home and studio, tools and techniques, this show gathers together separate and collaborative pieces made over the last few years. The works correspond and contradict each other, sharing themes and ideas. *Meet Me In The Garden* is an opportunity for these two artists to create a middle ground, an organic place for things to grow. From window boxes to hot houses, humans love to explore and tend a garden and always have done. A garden demands your love and attention. Nurturing it is a labour of love and at times a battle. Planet Earth is a garden and we are somewhere between the gardeners and the insects. *Meet Me In The Garden* invites visitors to immerse themselves in this unique environment, the fruit of the combined imaginations of these two outstanding contemporary artists."

5 May - 24 June: Vanner Gallery, 45 High Street, SALISBURY, SP1 2PB. Tuesday - Saturday 10am - 5pm. 01722 501551 / vannergallery.com.



Boilerhouse Gallery

Contemporary art and craft
in a wonderful location

Tuesday to Sunday 10am - 5pm

Open every day for Purbeck Art Weeks
27 May - 11 June • Venue 19

Sandy Hill Lane, Corfe Castle BH20 5JF
07398 052489 • boilerhousegallery.co.uk





CHRISTINA SIMONS 'UNCERTAIN LAND - BENTIU, SOUTH SUDAN' (2022)

Photo Frome

"The second edition of Photo Frome, an inclusive festival dedicated to showcasing and celebrating local, national, and international photography and filling the creative community of Frome with photos, is set to run from 24 June to 12 July. This year's theme, 'Decolonising Environments', explores the complex and often conflicting relationships between human communities, places, and the natural world. New additions come in the form of a two-day symposium, an outdoor installation, group portfolio reviews, student awards, an open book call, enhanced workshop programme, and stronger community-focussed involvement. By design, given Photo Frome's fundamental principle of bringing photography to all, every exhibition will be free entry."

24 June - 12 July: 7 venues in FROME. photofrome.org.

FRAN BOOTH

1 - 28 May

Duchess of Cornwall Inn, 12 Queen Mother Square, POUNDBURY, Dorchester, DT1 3DD. 10am - 10pm. artinpoundbury.co.uk.

JO LILLEY: 'NEEDLE & WEAVE'

1 - 31 May

The Creative Gallery, St John's Hill, WAREHAM, BH20 4NB. Monday - Saturday 10am - 5pm. 01929 551505. "Needle felted creatures, woven woollen mats and scarves."

'LAYER UPON LAYER'

2 - 14 May

Eype Centre for the Creative Arts, St. Peter's Church, Mount Lane, EYPE, Bridport, DT6 6AR. 10am - 4pm (closed 6 May). 07711 460372. "Stunning art by Jenny Penney, Lyn Kirkland and Sue Jenkins."

WEST COUNTRY SCRIBES

2 - 19 May

Ilminster Arts Centre, The Meeting House, East Street, ILMINSTER, TA19 0AN. 9.30am - 3pm. 01460 54973.

'CONNECT, CREATE, COLLABORATE'

2 - 26 May

Bridgwater Arts Centre, 11 - 13 Castle Street, BRIDGWATER, TA6 3DD. Monday - Friday 10am - 3pm. bridgwaterartscentre.co.uk. "Drawing, printmaking, mixed media and textiles by Joanna Briar and Jill Davies, taking inspiration from nature and their connection with the local landscape."

WESSEX PAINTERS

3 - 9 May

The Gallery, Shaftesbury Arts Centre, Bell Street, SHAFTESBURY, SP7 8AR. Monday - Saturday 10am - 4pm. shaftesburyartscentre.org.uk.

'SPRING INTO SUMMER'

3 - 28 May

Walford Mill, Knobcrook Road, WIMBORNE, BH21 1NL. Wednesday - Saturday 10am - 5pm, Sunday 11am - 4pm. walfordmillcrafts.co.uk. Textiles, painting, print, collage, resin, paper cutting, illustration and jewellery.

LOUISE BRADLEY: 'DOMESTIC NATURE'

4 May - 3 June

Pound Arts, Pound Pill, CORSHAM, SN13 9HX. Monday - Saturday 10am - 9.30pm. poundarts.org.uk. Painting, drawing and sculpture.



JACK HARDIN: 'EX UMBRA'

4 May - 3 June

Wells & Mendip Museum, 8 Cathedral Green, WELLS, BA5 2UE. Tuesday - Saturday 10am - 4pm. 01749 673477 / wellsmuseum.org.uk / jackhardinphotography.com. Photography.

'LIFE LAYERS'

5 and 6 May

Hours, 10 Colston Yard, BRISTOL, BS1 5BD. Friday 6 - 9pm, Saturday 11am - 5pm. hours-space.com.

PEDAS: 'EQUILIBRIUM'

5 - 22 May

The Gallery Upstairs, Upton Country Park, Poole Road, POOLE, BH17 7BJ. 10am - 5pm. 01202 775304.

MAGGIE WYMAN: 'FACETS'

6 - 29 May

Sou'-Sou'-West Arts Gallery, Symondsby Estate, BRIDPORT, DT6 6HG. 10.30am - 4.30pm. 01308 301326 / sousouwest.co.uk.



THE CREATIVE GALLERY

Showcasing ceramics, paintings, textiles, jewellery and glass by local artists



Jo Lilley
Needle & Weave
1st - 31st May



Rosemary Jacks
Every pot tells a story
1st - 30th June

St John's Hill, Wareham, Dorset BH20 4NB t 01929 551505 e creativegallery@hotmail.co.uk
Open 10-5 Monday to Saturday, then daily from 22nd May



MARCIA TEUSINK

'FLO(RA)TILLA: A NATURAL AND NOT VERY NATURAL HISTORY'

Od Arts Festival

"Od Arts Festival returns, from Friday 26 to Sunday 28 May, with a packed programme of art and community activity! The festival takes its name from the Od (Od pronounced Odd), a crooked stream that meanders through the neighbouring villages of East and West Coker, Somerset. Made possible by the generous support of public funding through the National Lottery by Arts Council England and the Heritage Lottery Fund, and led by Coker-based OSR Projects, Od Arts Festival 2023 - *Still and Still Moving*, takes its title from T.S Eliot's poem *East Coker*, the second of his famous *Four Quartets*. The festival will explore the different ways we navigate, move in and connect to the world around us, from ancient way-making and international trade to the almost imperceptible slow motion of plants and rocks. Expect intriguing works in unusual locations across the two villages, providing an opportunity to meander and explore at your own pace. Along with activities including monument making, guided walks, bookbinding and a silent disco... just to name a few!"

26 - 28 May: Various locations in WEST COKER and EAST COKER.
odartsfestival.co.uk / @odartsfest



PENNIE ELFICK AND SUSAN GRADWELL

9 - 20 May

Wells Museum, 8 Cathedral Green, WELLS, BA5 2UE. 10 - 4pm. 01849 673477 / pennieelfick.co.uk / susangradwell.co.uk. *Paintings and prints.*

Above: Pennie Elfick 'Transient Light'

ARTISTS 303

10 - 16 May

The Gallery, Shaftesbury Arts Centre, Bell Street, SHAFTESBURY, SP7 8AR. Monday - Saturday 10am - 4pm. shaftesburyartscentre.org.uk.

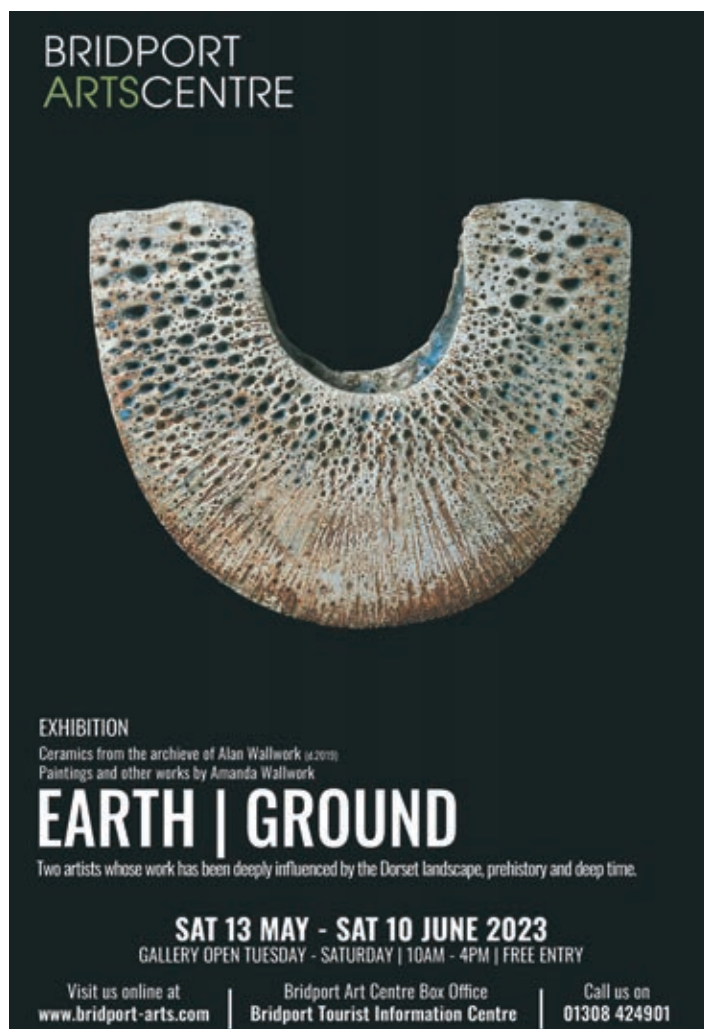


FERNANDO VELÁZQUEZ:

'TRANSVOID'

12 May

Wirth Gallery, The Merritt Centre, Sherborne Girls, Bradford Road, SHERBORNE, DT9 3QN. 5.30 - 7pm. fernandovelazquez.co.uk.



Visual Arts

JUDITH GAIT: 'ART THROUGH DIFFICULT TIMES'

15 - 25 May

Paperback Gallery, 2 Gundry Lane, BRIDPORT, DT6 3RJ. Monday - Thursday 10am - 3pm. 01308 538939 / judithgait.co.uk.

PERCY LIZZARD: 'INDIA'

17 - 30 May

The Gallery, Shaftesbury Arts Centre, Bell Street, SHAFTESBURY, SP7 8AR. Monday - Saturday 10am - 4pm. shaftesburyartscentre.org.uk. "Major exhibition of paintings influenced by Percy's recent visits to exotic Indian rainforests."

UPWEY POTTERS

20 May - 4 June

Old School Village Hall, Church Street, UPWEY, Weymouth, DT3 5QF. 10am - 5pm. 01305 815216 / upweypotters.com.

IRENE JONES: 'TODAY IS TOMORROW'S DREAM'

20 May - 24 June

Hybrid Gallery, 51 High Street, HONITON, EX14 1PW. Tuesday - Saturday 10am - 5pm. 01404 43201 / hybrid-devon.co.uk.



'DAYS IN THE DORSET LANDSCAPE'

20 May - 25 June

Gallery On The Square, Queen Mother Square, DORCHESTER, DT1 3BL. Monday - Saturday 9.30am - 5pm, Sunday 11am - 4pm. 01305 213322 / gallerypoundbury.co.uk. "Fresh and lively paintings by Rob Adams and Sue Fawthrop."

Above: Rob Adams 'Stourpaine'

'STREET LIFE'

20 May - 23 July

Royal West of England Academy, Queen's Road, Clifton, BRISTOL, BS8 1PX. Tuesday - Sunday 10am - 4pm. 0117 973 5129 / rwa.org.uk.



FAY BALLARD 'UNTITLED 16' (Graphite on paper, 2021)

Lines of Empathy

"This group show brings together hand-drawn work on paper by 17 mid-career and established artists: Fay Ballard, Duncan Bullen, Lucinda Burgess, Helen Cass, Rachel Duckhouse, Mary Griffiths, Simon Hitchens, Louise Hopkins, Carali McCall, Onya McCausland, Anna Mossman, David Murphy, Peter Peri, Kathy Prendergast, Wendy Smith, Giulia Ricci and Kate Terry. The artworks in the exhibition are the subject of a new artist's book, produced by the Italian, London-based, artist Giulia Ricci between 2020 and 2022. The title *Lines of Empathy* is a synthesis of the project's main themes: the exploration of the process of mark-making while drawing on paper, and empathy as the act of reaching out into someone else's experience. The invited artists have been asked to talk in detail about their artwork on paper, with questions related to their choice of paper, media and processes used, their relationship with the body and the senses."

3 June - 22 July: Close Ltd, Close House, HATCH BEAUCHAMP, TA3 6AE. Thursday and Friday 10am - 3pm, Saturday 10am - 1pm. 01823 480350 / closeltd.com.

'FOUND CITIES, LOST OBJECTS: WOMEN IN THE CITY'

20 May - 13 August

Royal West of England Academy, Queen's Road, Clifton, BRISTOL, BS8 1PX. Tuesday - Sunday 10am - 4pm. £8.90. rwa.org.uk. "Curated by Turner Prize winner, Lubaina Himid CBE, this Arts Council Collection touring exhibition explores modern city life from a female perspective."

'FLOW'

20 May - 3 September

Somerset Rural Life Museum, Chilkwell Street, GLASTONBURY, BA6 8DB. Tuesday - Sunday 10am - 5pm. £8.50 / £6.95 / £4. srlm.org.uk.

NYE THOMPSON: 'VERTIGO'

20 May - 3 September

East Quay, WATCHET, TA23 0AQ. Tuesday - Sunday 10am - 6pm. eastquaywatchet.co.uk. "Nye Thompson will open our eyes to the world of surveillance, satellites, and the new frontier - space."

'CHEDDAR INDIVIDUALITY PROJECT'

21 May

Cheddar Catholic Hall, Tweentown, CHEDDAR, BS27 3HU. 11am - 4pm. seedsedgemoor.com. "1,000 ceramic figures created as part of a community project with Seed Sedgemoor."

STEPHEN COLLINS

22 May - 11 June

Sou'-Sou'-West Arts Gallery, Symonds Estate, BRIDPORT, DT6 6HG. 10.30am - 4.30pm. 01308 301326 / sousouwest.co.uk.

ANNUAL OPEN ART EXHIBITION

23 May - 16 June

Ilminster Arts Centre, The Meeting House, East Street, ILMINSTER, TA19 0AN. 9.30am - 3pm. 01460 54973.

DRAYCOTT ART CLUB

24 May - 8 June

Wells & Mendip Museum, 8 Cathedral Green, WELLS, BA5 2UE. Tuesday - Saturday 10am - 4pm. draycottartclub.weebly.com.

AMY ALBRIGHT

24 May - 16 June

Artwave West, MORCOMBELAKE, DT6 6DY. Wednesday - Saturday 10am - 5pm. artwavewest.com.

UNTIL NEXT TIME
Drawing, Painting, Silk painting, Collage, Kilnformed glass, Reduction lino print.
1st - 30th July, Mon - Sat 10am-4pm
Town Hall
1 Silver Street
Trowbridge BA14 8EQ
trowbridgetownhall.com

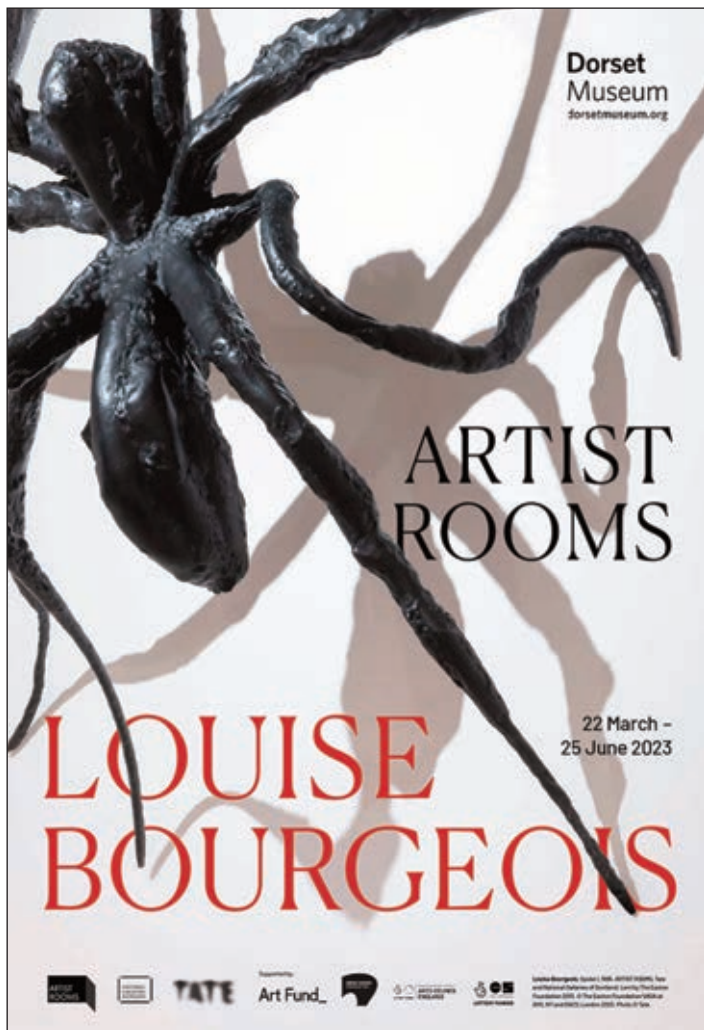
DEFASHION

O Promoting a local clothing culture **Fri. 26th & Sat. 27th May**

- Fibre Growers
- Makers
- Vintage garments
- Haberdashery
- Workshops
- Talks

Hawkers Farm Stour Provost SP8 5LZ

Call: 07801 240103 **Tickets £5 Eventbrite**



Dorset Museum
dorsetmuseum.org

ARTIST ROOMS

22 March - 25 June 2023

LOUISE BOURGEOIS

Supported by: TATE Art Fund

Louise Bourgeois (b. 1929, USA, 2017) 'Spider', her most famous sculpture of a spider, is a bronze sculpture of a spider, made in 1982. It is the largest of a series of spiders, and is the only one to be made in bronze. It is the only one to be made in bronze. It is the only one to be made in bronze.



EAST QUAY


VERTIGO
Nye Thompson
20.05.2023 - 03.09.2023

@eastquaywatchet
eastquaywatchet.co.uk
Open daily 10am - 5pm

In partnership with

LUMEN ART PROJECTS

ARTS COUNCIL ENGLAND
Supported using public funding by ARTS COUNCIL ENGLAND



Cathy Veale
OPEN STUDIO
for Purbeck Arts Week
27th May - 3rd June
The Loft, 17a Commercial Road,
Swanage, BH19 1DF
Open 9.30am - 5.30pm
cathyveale.co.uk



This Living Land

HEATHER GIBBONS and ROBIN MACKENZIE
27 MAY - 11 JUNE
Durlston Country Park
Swanage, BH19 2JL
10am - 5pm • 01929 434443
heathergibbons.co.uk
robinmackenzie.co.uk



VISUAL Rhythm

**Helen Simpson • Mala Hassett • June Lisle
Imogen Bittner • John Austin-Williams**
Featuring a sound installation by **Joy Ingle**
2nd - 30th May
Malthouse Gallery, East Lambrook Manor Gardens, Silver Street,
East Lambrook, South Petherton, Somerset TA13 5HH
Tuesday to Saturday • 10am to 5pm • Free entry to exhibition

EAST LAMBROOK MANOR GARDENS
DVA PROJECT GROUPS



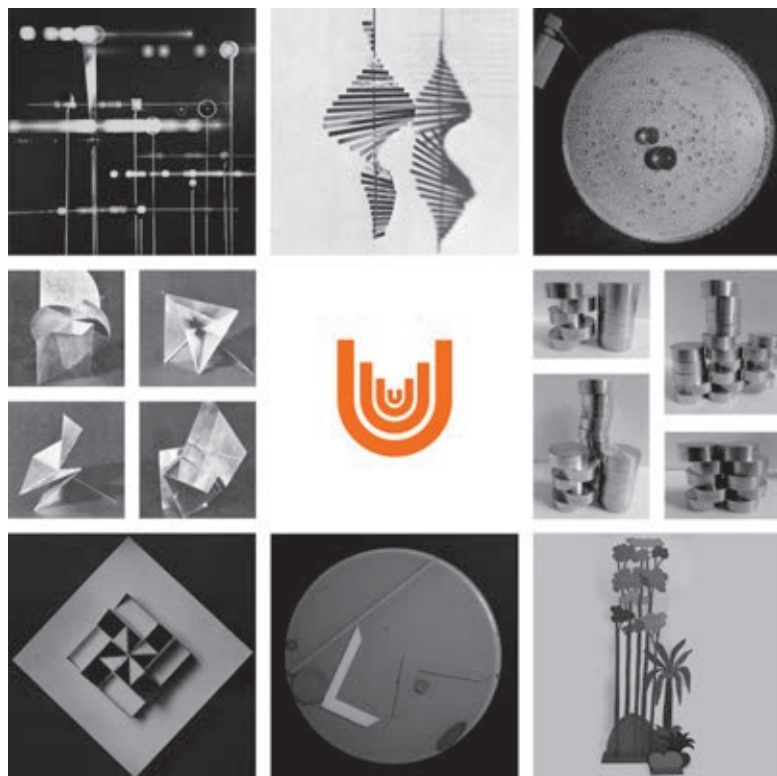
8th - 16th
FROME OPEN ART TRAIL
11 - 5

JULY
For more information - and online brochure:
www.frome-open-art-trail.co.uk
2023
FROME FESTIVAL

Unlimited

Art for Everyone in the 1960s

THE
HOLBURNE
MUSEUM
WWW.HOLBURNE.ORG



The first ever retrospective exhibition devoted to Jeremy Fry's ground-breaking Unlimited.

In 1966, Bath based inventor and entrepreneur Jeremy Fry established *Unlimited* as an antidote to the exclusivity of the art world by producing unlimited editions of work by some of the leading international artists of the day, including Takis, Mary Martin and Lygia Clark. This bold initiative meant these artworks were accessible and affordable to the wider public and, although short-lived, the project was a huge success.

For the first time in over fifty years, the works will be reunited and displayed in Bath's magnificent Assembly Rooms.

22 April – 4 June 2023

Assembly Rooms, Bath BA1 2QH

FREE

Opening times:

Monday to Saturday 10am – 5pm

Sundays and Bank Holidays 11am – 5pm

Supported by:

rotork

Generously supported
by the James and
Deirdre Gwyn Trust
And the Unlimited
Supporter's Circle

Additional thanks to:

BABYCHAM
identity/ing

Peradam started out as part
of Mount Art Services, named
after René Daumal's unfinished
philosophical novella "Mount
Analogue".

peradam

fine art printing & scanning from the
heart of Frome.

Now focused solely on printing and
scanning, the name of our new
identity, Peradam, is based on the
crystal-like objects only found on
Mount Analogue.



peradam.co.uk



Visual Arts

BROADSTONE ART SOCIETY

25 May - 6 June

The Gallery Upstairs, Upton Country Park, Poole Road, POOLE, BH17 7BJ. 10am - 4pm. 01202 127770.

'DEFASHION DORSET'

26 and 27 May

Hawkers Farm, Hawkens Lane, STOUR PROVOST, Gillingham, SP8 5LZ. 10am - 5pm. £5. 07801 240103 / hawkersfarm.org.



BEAR FLAT ARTISTS ART TRAIL

27 - 29 May

Bear Flat, BATH, BA2. 11am - 5pm. bearflatartists.co.uk. "Almost forty artists welcome visitors to this year's trail, including Ben Hughes (above)."

JANET HALL: THROUGH THE LABYRINTH'

27 May - 4 June

11 Kempston Road, WEYMOUTH, DT4 8XB. 2 - 7pm. 07479 465150.

LYME REGIS ART SOCIETY

27 May - 8 June

Malthouse Gallery, Town Mill, Mill Lane, LYME REGIS, DT7 3PU. 10.30am - 4.30pm. 01297 444111 / lymeregisartsociety.org.uk.

AM THOMAS: 'SIMPLY COLOUR'

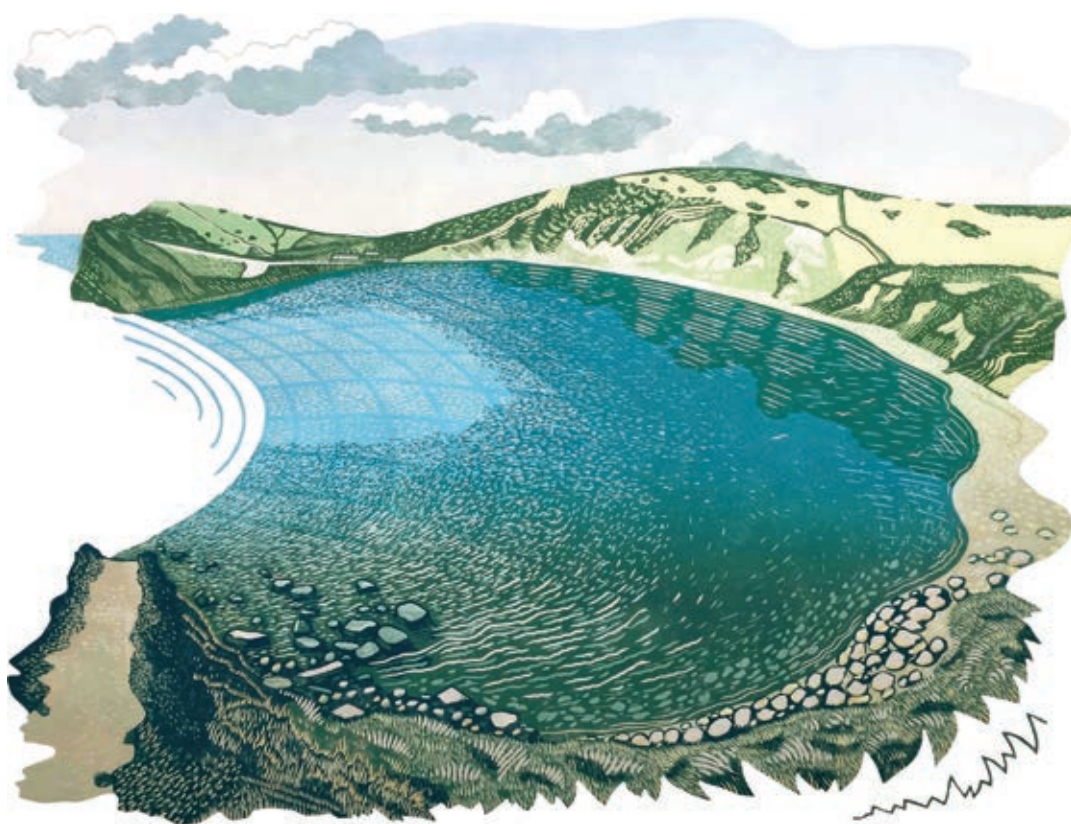
27 May - 24 June

Fisherton Mill, 108 Fisherton Street, SALISBURY, SP2 7QY. Monday - Saturday 10am - 5pm. 01722 500200 / fishertonmill.co.uk. "Vibrant abstract paintings."

PODI LAWRENCE

29 May - 2 July

Duchess of Cornwall Inn, 12 Queen Mother Square, POUNDBURY, Dorchester, DT1 3DD. 10am - 10pm. artinpoundbury.co.uk.



ROBIN MACKENZIE 'RIPPLES IN THE COVE'

Purbeck Art Weeks Festival

"Purbeck Art Weeks Festival offers visitors and the local community a rich variety of art, music and events. With over 30 open studios to explore it's a great way to enjoy the range of art produced across Purbeck. PAW artists, new and more established, are looking forward to welcoming you! The magnificent Rollington Barn (near Corfe Castle) hosts our extensive collective exhibition - and is an excellent place to start plotting your trail in the delicious courtyard café. In the evenings there is music to enjoy in beautiful Purbeck venues. This includes some of the best vocal consort music sung by The Gesualdo Six, Tenebrae commemorate the 400th anniversary of the great William Byrd, and Voice present *Hildegard Transfigured*, celebrating the works of 12th century visionary Hildegard von Bingen. Helen Charlston and theorbo player, Toby Carr, explore the stories of women in war."

27 May - 11 June: Multiple venues throughout PURBECK. purbeckartweeksfestival.co.uk.

SANDY ROBERTS

31 May - 6 June

The Gallery, Shaftesbury Arts Centre, Bell Street, SHAFTESBURY, SP7 8AR. Monday - Saturday 10am - 4pm. 01747 855243 / shaftesburyartscentre.org.uk. "New, challenging and vibrant work."

'SKY-LIGHT'

31 May - 11 June

Walford Mill, Knobcrook Road, WIMBORNE, BH21 1NL. Wednesday - Saturday 10am - 5pm, Sunday 11am - 4pm. walfordmillcrafts.co.uk. Paintings by James Budden and Stephen Henderson.

ROSEMARY JACKS: 'EVERY POT TELLS A STORY'

1 - 30 June

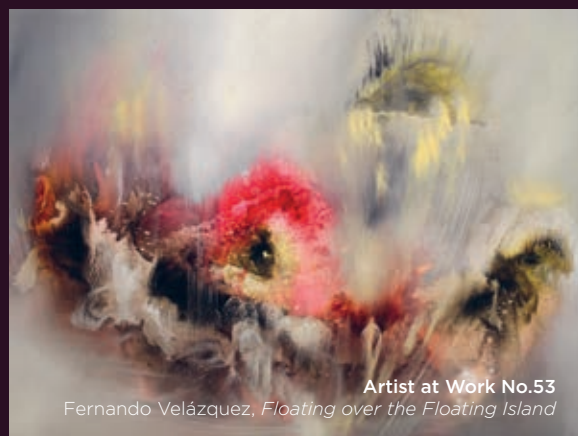
The Creative Gallery, St John's Hill, WAREHAM, BH20 4NB. 10am - 5pm. creativegallerywareham.co.uk. "Lively, decorated earthenware pottery."

SHERBORNE TIMES

A MONTHLY CELEBRATION OF PEOPLE, PLACE AND PURVEYOR

**OUT NOW
AND ONLINE**

sherbornetimes.co.uk



Artist at Work No.53

Fernando Velázquez, *Floating over the Floating Island*



HELEN SIMPSON 'EXHALATION'

Visual Rhythm

"This exhibition brings together John Austin-Williams, Imogen Bittner, Mala Haslett, June Lisle and Helen Simpson, five members of the Dorset Salon, a Dorset Visual Arts project group. Very different artists, whose work reflects the dynamic sensations found in music. Among the colours, forms and marks in their work lie the echoes of a melody, a beat, or as the title describes a *Visual Rhythm*."

2 - 30 May: Malthouse Gallery, East Lambrook Manor Gardens, Silver Street, SOUTH PETHERTON, TA13 5HH. 10am - 5pm. 07748 280402 / helensimpsonartist.co.uk.

'MY ROOTS ARE IN THE OCEAN'

2 and 3 June

Hours, 10 Colston Yard, BRISTOL, BS1 5BD. Friday 6 - 9pm, Saturday 11am - 5pm. 07766 054659 / hours-space.com.

ABCD: 'FOLD: STRUCTURES AND BINDINGS'

3 - 10 June

ACE Arts, Market Place, SOMERTON, TA11 7NB. Tuesday - Saturday 10am - 5pm. 01458 273008 / acearts.co.uk. "The latest offerings from ABCD, a group of book artists based at Dove Studios in Butleigh."

SOMERSET PRINTMAKERS: 'ALL ABOUT PRINT'

3 - 25 June

Sou'-Sou'-West Arts Gallery, Symonds Estate, BRIDPORT, DT6 6HG. 10.30am - 4.30pm. 01308 301326 / sousouwest.co.uk.

'LINE OF SIGHT'

7 - 13 June

The Gallery, Shaftesbury Arts Centre, Bell Street, SHAFTESBURY, SP7 8AR. Monday - Saturday 10am - 4pm. shaftesburyartscentre.org.uk. "Paintings, drawings and prints by Jane and Laura Barnard."

KIT JOHNS: 'A LOVE LETTER LOST AT SEA'

8 June - 15 July

Pound Arts, Pound Pill, CORSHAM, SN13 9HX. Monday - Saturday 10am - 9.30pm. poundarts.org.uk. "Kit's paintings explore the wild and untamed nature of the ocean."

BS9 ARTS TRAIL

10 and 11 June

Various locations, BRISTOL BS9. 11am - 5pm. 07771 888992 / bs9arts.co.uk. "One postcode and so much to see! 88 artists show their work in 15 BS9 locations."

ART WEEK EXETER 2023

13 - 18 June

Various locations in EXETER. artweekexeter.org.uk. "Artist talks, exhibitions and events, films, workshops and new commissions."

CAROLINE NAIRN: 'LANDSCAPES OF DORSET AND CORNWALL'

13 June - 13 August

Rotunda Gallery, Lyme Regis Museum, Bridge Street, LYME REGIS, DT7 3QA. Wednesday - Saturday 10am - 5pm, Sunday 10am - 4pm. £5.95. 01297 443370.

'THE LAND AROUND US'

14 - 20 June

The Gallery, Shaftesbury Arts Centre, Bell Street, SHAFTESBURY, SP7 8AR. Monday - Saturday 10am - 4pm. shaftesburyartscentre.org.uk. "A collection of images by Dan Croft, showing the land around us in monochrome."

'SPIRIT OF SYMONDSBURY'

12 June - 2 July

Sou'-Sou'-West Arts Gallery, Symonds Estate, BRIDPORT, DT6 6HG. 10.30am - 4.30pm. 01308 301326 / sousouwest.co.uk. "Recent work by Rob Crisp."

CHANDOS SOCIETY OF ARTISTS

13 June - 6 July

Taunton Brewhouse, Coal Orchard, TAUNTON, TA1 1JL. Monday - Friday 10am - 4pm. 01823 283244.

CHRISTCHURCH ARTS GUILD

17 June - 16 July

The Red House Museum, Quay Road, CHRISTCHURCH, BH23 1BU. Wednesday - Saturday 10am - 4pm, Sunday 12noon - 4pm. christchurchartsguild.co.uk.

VIVIENNE BEAUMONT: 'SEEDS, FLOWERS, AND FLOWING HAIR'

17 June - 22 July

ACE Arts, Market Place, SOMERTON, TA11 7NB. Tuesday - Saturday 10am - 5pm. 01458 273008 / acearts.co.uk. "Vivienne Beaumont's soulful textile work is shaped by symbols and stories, archetypes and female transformation, taking inspiration from myths and fairy tales, tales that have endured the ages." See Exhibit A on page 3.



Original limestone lithograph by Maynard Hales
Collector's Choice in The Slade Centre Open Print Show



The Slade Centre, The Square, Gillingham, Dorset SP8 4AY
Tuesday - Saturday 9am - 4pm • 07775 431652 • sladecentre.com

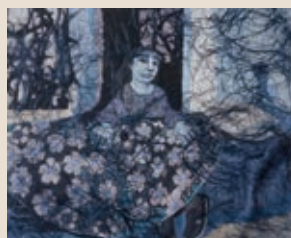


Exhibit A

Artists and photographers are invited to submit work for next issue's page 3 Exhibit A by emailing images to: simon@evolver.org.uk



STUDIO SPACE WANTED

in Milborne Port / Sherborne (or 10 miles radius of)
Please contact Jenni
01963 250438
jennicadman@gmail.com
jennicadman.co.uk

Visual Arts



Jeremy Fry: Unlimited

"In 1966, Bath based inventor and entrepreneur Jeremy Fry established Unlimited as an antidote to the exclusivity of the art world by producing unlimited editions of work by some of the leading international artists of the day, including Takis, Mary Martin and Lygia Clark. This bold initiative meant these artworks were accessible and affordable to the wider public and, although short-lived, the project was a huge success. For the first time in over fifty years, the works will be reunited and displayed in Bath's magnificent Assembly Rooms."

Until 4 June: The Assembly Rooms, Bennet Street, BATH, BA1 2QH. Monday - Saturday 10am - 5pm, Sunday 11am - 5pm. holburne.org.



'TERRA OCEANUS'

17 June - 12 August
Thelma Hulbert Gallery, Dowell Street, HONITON, EX14 1LX. Tuesday - Saturday 10am - 5pm. 01404 45006 / thelmahulbert.com.

"Photographer Corinna Wagner explores our relationship to rivers, seas and to their edge lands."

SIXTH FORM ART EXHIBITION

20 - 30 June
Allsop Gallery, Bridport Arts Centre, 9 South Street, BRIDPORT, DT6 3NR. Tuesday - Saturday 10am - 4pm. bridport-arts.com.

'THE GARDEN AND BEYOND'

20 June - 8 July
Ilminster Arts Centre, The Meeting House, East Street, ILMINSTER, TA19 0AN. 9.30am - 3pm. 01460 54973.

'A VOCABULARY OF LINES'

21 - 27 June
The Gallery, Shaftesbury Arts Centre, Bell Street, SHAFTESBURY, SP7 8AR. Monday - Saturday 10am - 4pm. 01747 855243 / shaftesburyartscentre.org.uk. "A selection of cross disciplinary works by Cath Bloomfield, Sarah Ball and Melissa Wishart."

'TOP DRAWER'

22 June - 3 July
The Gallery Upstairs, Upton Country Park, Poole Road, POOLE, BH17 7BJ. 10am - 5pm. 07502 270886.

'THE PEACE OF PAPER'

21 June - 2 July
Walford Mill, Knobcrook Road, WIMBORNE, BH21 1NL. Wednesday - Saturday 10am - 5pm, Sunday 11am - 4pm. walfordmillcrafts.co.uk. "Hand cut paper art by Kyleigh Orlebar."

I-D ARTISTS: 'SHIFTING SPACES'

24 June - 8 July
Heritage Courtyard Gallery, 6 Heritage Courtyard, Sadler Street, WELLS, BA5 2RR. Monday - Saturday 10.30am - 4pm. id-artists.com.

KIM PRAGNELL AND HILARY BALL: 'BOATS BY THE YARD'

28 June - 4 July
The Gallery, Shaftesbury Arts Centre, Bell Street, SHAFTESBURY, SP7 8AR. Monday - Saturday 10am - 4pm. 01747 855243 / shaftesburyartscentre.org.uk. "Colourful and evocative drawings, paintings and multi-media pieces."

'FORMS TO INSPIRE'

30 June - 24 September
The Bishop's Palace Gardens, WELLS, BA5 2PD. 9.30am - 5.30pm. £16 / £8. 01749 988111 / swsculptors.co.uk / bishopsalace.org.uk. "Ninety covetable works by 30 makers from across the South West."

Sou'-Sou'-West

Facets Maggie Wyman 06-29 May

Maggie's 60 year retrospective exhibition showcases her artistic journey through vibrant color exploration, from abstraction to realism and back again. Her unique approach to technique has captivated collectors worldwide, making her exhibition a must-see.

<p>01-14 May Precipice? Sarah Jane Ross</p> <p>22 May-11 Jun Landscapes - Real & Imagined Stephen Collins</p> <p>03-25 Jun All About Print Somerset Printmakers</p>	<p>12 Jun-02 Jul The Spirit Of Symondsbur Rob Crisp</p> <p>01-23 Jul Summertide Bridport Art Society</p> <p>03-23 Jul In The Company Of Colour Alison Rose</p>
---	--



Supported using public funding by
ARTS COUNCIL ENGLAND



Dorset Council

Gallery & Shop

Daily: 10:30 - 16:30

Manor Yard, Symondsbur Estate, Bridport, DT6 6HG

[@sousouwestgallery](https://www.sousouwestgallery.co.uk)
sousouwest.co.uk

Sky Light

Paintings by
James Budden
&
Stephen J Henderson

Light & atmosphere through colour

31st May-11th June

Walford Mill Crafts
BH21 1NL

Wed - Sat 10am-5pm
Sun 11am-4pm

Free Admission

walfordmillcrafts.co.uk
jamesbudden.co.uk
sh3d.co.uk



Cotswold Sculptors Association **Creating Spaces 2023**

SCULPTURE EXHIBITION



1 June - 30 July 2023

Open Wednesday to Sunday 10-5 including bank holidays. Please note that the garden does not permit dogs (other than assistance dogs).

THE GARDEN

AT MISERDEN

Miserden, Nr. Stroud, Gloucestershire GL6 7JA What 3 words: alienated.wider.skies

www.miserden.org www.cotswoldsculptorsassociation.com

SCULPTURE
CERAMICS
TEXTILES
INSTALLATION
GILDING
PRINTMAKING
RECYCLED ART
PAINTING
JEWELLERY
MOSAIC
LEATHER
PHOTOGRAPHY
WOOD
ILLUSTRATION
DIGITAL ART
ARTIST'S BOOKS
FURNITURE
METALWORK
GLASS
MIXED MEDIA
DRAWING



Sat 29 April - Mon 8 May

#WVAT'23

**73 VENUES
240+ ARTISTS
EXHIBITIONS
OPEN STUDIOS
GALLERIES
WORKSHOPS**

wvat.co.uk



WYLYE VALLEY ART TRAIL
Celebrating visual art in south west Wiltshire
 Free art trail guides available at tourist information centres, libraries, arts centres and lots of other places.
 Download the Wylde Valley Art Trail App at wvat.co.uk



The Queen's Award
for Voluntary Service



'PINAFORES' (2016)



'STILL HOLDING ON' (2017)



'ESPALIER' (2023)

Valda Jackson

Valda Jackson is a multi-disciplinary artist working across painting, drawing, print, film and sculpture. Whatever media she is working in totally absorbs her. "I really love working in clay, it is both drawing and sculpture." As a student in Bristol she worked across disciplines floating between painting and sculpture. Drawing and writing are the areas that travel with her. "A notebook and a pencil are all you need in transit."

Writing is an increasingly significant part of her practice and her short story *Team Players* appears in a newly published collection, *The Book of Bristol: A City in Short Fiction*. In April she is heading to the Hawthornden Literary Retreat in Scotland to do a month long residency and hopefully complete the first draft of her first novel. In some ways writing has taken over her life since she did an MA in Creative Writing at Bath Spa in 2019 - 2020.

Music is vitally important to her and her tastes are eclectic ranging from the seventeenth century composer and violinist Heinrich Biber's *Violin Sonata in E Major* through to Beethoven, Bob Marley and the sea shanty about the Wellerman whaling boats. Music makes her want to dance with joy and yet sometimes she finds it profoundly moving and painful.

Born in Jamaica, Valda joined her family in Birmingham at the age of five. She came to Bristol to study in 1986 and stayed. She works out of a studio space at Spike Island. In 2018 she won the competition to make a billboard, *Mural By The Sea* for Dreamland in Margate. The project was curated by StudioTAC.

The commission gave her the opportunity to make a significant piece of work that was directly related to issues that are central to her practice. It speaks to her own personal history and that of many people whose lives have been impacted by immigration and the dislocation and isolation that are part of it. The time scale was very short, and she normally works very slowly, so she constructed the work from paintings and drawings created over decades collaged together with photographic images. She inputted them into Photoshop, using it as "a kind of sketchbook of ideas" and developed a way of working which she continues to use. The finished mural was huge, 3.8 metres high by 12 metres wide.

The mural references a 1986 painting by Sonia Boyce, *She Ain't Holding Them Up, She's Holding On (Some English Rose)*. The connection was flagged up by the poet Dorothea Smartt FRSL, and Jackson's title, *Still Holding On*, has multiple meanings, referencing "knowing and remembering cultural ties" as well as the immense importance of continuing to "hold on in the face of wider societal rejections". She has now reworked *Still Holding On*, as part of the Bristol element of a major Arts Council touring exhibition at the RWA in Bristol, *Found Cities, Lost Objects: Women In The City*, curated by Lubaina Himid CBE.

Jackson has been working in the public arena for nearly thirty years. In 2021 she was one of the four artists shortlisted to create a new monument to the Windrush generation at Waterloo Station. The commission later went to sculptor Basil

Watson. Together with the sculptor Rodney Harris she has a long-standing collaborative public art practice. jacksonandharris.co.uk. They make heart-stoppingly beautiful reliefs which emerge out of brick walls in public sites throughout the UK. Their most recent project *Espalier*, opened in March as part of the redevelopment of the Peabody St Johns Hill estate in Clapham, London.

Initially they work together with architects, designers, planners and builders before launching into what is an incredibly physical process. Essentially they construct a mock up of the brick wall that contains the sculpture and then working together they carve the relief. *Espalier* took nine months to make. At the point at which the relief is dismantled to be taken away to be fired Valda leaves, she can't bear to watch. Rodney then takes responsibility for transporting and overseeing the installation of the wall as the component parts are reassembled brick by brick.

Valda Jackson's wide ranging and powerful practice returns again and again, with delicacy and integrity, to her central concerns of migration and human dignity and what it is to exist in an unequal society.

Fiona Robinson

'FOUND CITIES, LOST OBJECTS: WOMEN IN THE CITY'

20 May - 13 August

Royal West of England Academy, Queen's Road, Clifton, BRISTOL, BS8 1PX. 10am - 4pm. £8.90. 0117 973 5129 / rwa.org.uk.

valdajackson.co.uk

Music

May and June 2023

LONDON HANDEL PLAYERS

2 May

Westlands, Westbourne Close,
YEOVIL, BA20 2DD. 7.30pm. £15.
westlandseyovil.co.uk.

PAUL YOUNG

3 May

Lighthouse, 21 Kingland Road,
POOLE, BH15 1UG. 7.45pm. 01202
280000 / lighthousepoole.co.uk.

BOURNEMOUTH SYMPHONY ORCHESTRA: 'NORSE GODS'

3 May

Lighthouse, 21 Kingland Road,
POOLE, BH15 1UG. 7.30pm. 01202
280000 / lighthousepoole.co.uk.
"Kirill Karabits conducts the BSO
for Sibelius' Pohjola's Daughter,
Nielsen's thrillingly climactic fourth
symphony and Grieg's Piano
Concerto, with soloist Alexander
Malofeev."

KATHRYN ROBERTS AND SEAN LAKEMAN

4 May

Lighthouse, 21 Kingland Road,
POOLE, BH15 1UG. 8pm. 01202
280000 / lighthousepoole.co.uk.

NORTHERN CHORDS ENSEMBLE

5 May

Bridport Arts Centre, 9 South Street,
BRIDPORT, DT6 3NR. 11.30am. £14 /
£5. bridport-arts.com.

NORTHERN CHORDS ENSEMBLE

5 May

Ilminster Arts Centre, East Street,
ILMINSTER, TA19 0AN. 6.45pm. £18.
01460 54973 /
concertsinthewest.org.

JENNIFER PIKE & MARTIN ROSCOE

5 May

Cedars Hall, 15 The Liberty, WELLS,
BA5 1ST. 7.30pm. £18.
cedarshallwells.co.uk. "The dazzling
violinist joins Martin Roscoe for a
special recital of works by Mozart,
Beethoven and Grieg."

MIDGE URE

6 May

Lighthouse, 21 Kingland Road,
POOLE, BH15 1UG. 7.30pm. 01202
280000 / lighthousepoole.co.uk.



Babybird

"Babybird is a musical project centred around songwriter and multi-instrumentalist Stephen Jones, who has been releasing music since 1995. In recent years, Jones has recorded many of the Babybird albums himself, in addition to recording as a solo artist. Perhaps best known for international hit *You're Gorgeous*, Babybird write monstrous lullabies for an unstable world - songs you want to shake your head at, or lie on a sofa and let it float into your ears like a ghost. Don't miss seeing them!"

2 May: The Fleece, 12 St Thomas Street, Redcliffe, BRISTOL, BS1 6JJ. 7.30pm. £18.50. 0117 945 0996 / babybird.info / thefleece.co.uk.

NORTHERN CHORDS ENSEMBLE

6 May

The Dance House, Gouldsbrook
View, North Street, CREWKERNE,
TA18 7AL. 6.45pm. £18. 01460 75928 /
concertsinthewest.org.

ADRIAN BRENDEL AND MARTIN ROSCOE

7 May

Kimmeridge House, Bournemouth
University, Fernbarrow, POOLE,
BH12 5BB. 3pm. £20. 01202 745516 /
bournemouthchambermusic.co.uk.
"All-Beethoven concert, including
the 3rd and 4th cello sonatas."

BSO: 'SYMPHONIC ECSTASY'

10 May

Lighthouse, 21 Kingland Road,
POOLE, BH15 1UG. 7.30pm. 01202
280000 / lighthousepoole.co.uk.

JOSEPH HAVLAT

11 May

Lighthouse, 21 Kingland Road,
POOLE, BH15 1UG. 1.05pm. 01202
280000 / lighthousepoole.co.uk.
Piano recital.

GUY JOHNSTON

12 May

Cedars Hall, 15 The Liberty, WELLS,
BA5 1ST. 7.30pm. £18.
cedarshallwells.co.uk. "One of the
outstanding British cellists of his
generation."

'ALL OR NOTHING'

12 May

Westlands, Westbourne Close,
YEOVIL, BA20 2DD. 7.30pm. £24.50.
01935 422884 /
westlandseyovil.co.uk. "The story of
the iconic Mod band the Small
Faces through their electrifying
music."

DAN WHITEHOUSE

12 May

Taunton Brewhouse, Coal Orchard,
TAUNTON, TA1 1JL. 7.45pm. £14.
01823 283244 /
tauntonbrewhouse.co.uk.
"Insightful songs reflecting on how
much of our human experience
and expression is now mediated
through the looking glass of virtual
communication."



AXE & TRAP STUDIOS IS A RECORDING
FACILITY SITUATED AT THE FOOT OF
THE MENDIP HILLS IN WELLS, SOMERSET.

Three performance spaces, 24 channel
Trident console, extensive analogue
outboard and much more.

Take a tour at
AXEANDTRAPSTUDIOS.COM

MATT CARTER OCTET

12 May

Marine Theatre, Church Street,
LYME REGIS, DT7 3QB. 8pm. £16.
01297 442394. "Catch the future of
jazz in the making."

PHILIP CLOUTS QUARTET

12 May

Lighthouse, 21 Kingland Road,
POOLE, BH15 1UG. 7.45pm.
lighthousepoole.co.uk. Jazz.



THE LAST INKLINGS

12 May

The Pound Arts Centre, Pound Pill,
CORSHAM, SN13 9HX. 7.30pm. £12.
01249 701628 / poundarts.org.uk.

BSO: 'SYMPHONIC PINK FLOYD'

13 May

Lighthouse, 21 Kingland Road,
POOLE, BH15 1UG. 7.30pm. 01202
280000 / lighthousepoole.co.uk.

'SONGS FROM THE ENGLISH RADICAL TRADITION'

13 May

The Hardy Theatre, Thomas
Hardy School, DORCHESTER, DT1
2ET. 7pm. £35 / £18. 01305 266926.
"Wessex legends Show of Hands
join world renowned historian and
broadcaster Michael Wood and
singer songwriter Kirsty Merryn to
take us on a chronological journey
through 800 years of English
radical songs."

'FAR BEYOND THE STARS'

14 May

St John's Church, Park Street,
TAUNTON, TA1 4DG. 3pm. £15 / £10.
01823 710798. "Somerset Voices
celebrate some of Britain's greatest
choral music of the last 500 years."

SKERRYVORE

14 May

Lighthouse, 21 Kingland Road,
POOLE, BH15 1UG. 7.30pm. 01202
280000. "Contemporary Scottish
traditional music."



Aoife Scott

"Fragile and ethereal one minute and strong and vibrant the next, Aoife's dynamic and profound vocals explore the emotional depths of her lyrics, leaving the audience entranced."

24 June: The Pound Arts Centre, Pound Pill, CORSHAM, SN13 9HX. 7.30pm. £12. 01249 701628 / poundarts.org.uk.

HELEN FARRAR

17 May

The Pound Arts Centre, Pound Pill,
CORSHAM, SN13 9HX. 1pm. £8.
01249 701628 / poundarts.org.uk.
Piano recital.

BREAKIN' CONVENTION

17 May

Lighthouse, 21 Kingland Road,
POOLE, BH15 1UG. 7.45pm. 01202
280000 / lighthousepoole.co.uk.
"The ultimate celebration of hip
hop culture featuring local talent
as well as global sensations."

CHINA CRISIS

19 May

Bridgwater Arts Centre, 11 - 13 Castle
Street, BRIDGWATER, TA6 3DD.
8pm. £22. 01278 422700 /
bridgwaterartscentre.co.uk.



AMADOU DIAGNE & CORY SEZNEC

19 May

Parish Church, BLANDFORD, DT11
7AD. 7.30pm. £12 / £6. 01258 480698.
"Kora, banjo, guitar, calabash and
entrancing, silky vocals."

ANGELA HEWITT

19 May

Cedars Hall, 15 The Liberty, WELLS,
BA5 1ST. 7.30pm. £22.
cedarshallwells.co.uk. "A rare
opportunity to hear one of the
world's finest piano soloists."

TIM KLIPHUIS TRIO

19 May

Corn Exchange, High East Street,
DORCHESTER, DT1 1HF. 7.30pm. £18
/ £16. 01305 266926 /
dorchesterarts.org.uk. "One of the
world's top string groups."

THE LAST INKLINGS

19 May

Lighthouse, 21 Kingland Road,
POOLE, BH15 1UG. 8pm. 01202
280000 / lighthousepoole.co.uk.

CLOCKTOWER RECORDS

UPCOMING EVENTS

Thursday 18th May
**Greensleeves Record
Label Takeover**
7pm. £10.

Saturday 20th May
Palooka 5
7pm. £10.

Thursday 25th May
John Robb
7pm. £10

Thursday 29th June
Anja Graefe and Band
7pm. £10.



We are a funky, independent record shop stocking a great
range of new and preloved vinyl, specialising in Reggae, Hip
Hop, Soul, Funk, World, Electronic, Jazz, Blues, Alternative,
Indie, Rock, Pop and more

8a Pope Street, Brewery Square, Dorchester, DT1 1GW
Tuesday to Saturday from 10am

PHILIP CLOUTS & RON PHELAN 19 and 20 May

Tincleton Gallery, The Old School House, TINCLETON, near Dorchester, DT2 8QR. 7.30pm. £15. tincletongallery.com.

MILL FARM FOLK FESTIVAL 20 May

Mill Farm, BRADFORD ABBAS, Sherborne, DT9 6RE. 10.30am - 10.30pm. £12. millfarmmusic.com.

AMADOU DIAGNE & CORY SEZNEC 20 May

Village Hall, CHETNOLE, DT9 6NU. 7.30pm. £12 / £6. 07966 177789 / artsreach.co.uk. See 19 May.

MARA SIMPSON 20 May

The Pound Arts Centre, Pound Pill, CORSHAM, SN13 9HX. 7.30pm. £12. 01249 701628 / poundarts.org.uk.

THE TIGER LILLIES 21 May

Taunton Brewhouse, Coal Orchard, TAUNTON, TA1 1JL. 7.30pm. £24. tauntonbrewhouse.co.uk. "The Grammy nominated Godfathers of alternative cabaret return with a career spanning concert."

THE AXE VALE ORCHESTRA 21 May

Minster Church, AXMINSTER, EX13 5AH. 3.30pm. £12. axevaleorchestra.co.uk. "Afternoon concert."

'DREAMCOAT SUPERSTARS' 23 May

Westlands, Westbourne Close, YEOVIL, BA20 2DD. 7.30pm. £26. westlandseyovil.co.uk. "A magical evening of musical classics."

'ROCK FOR RILEY!' 25 May

The Bay Theatre, Weymouth College, WEYMOUTH, DT4 7LQ. 6.30pm. £10 / £7. 01305 208827. "Charity gig in memory of Weymouth College music student Riley Ellis."

MARKY DAWSON + THE MIDNIGHT ALLIANCE + JINDER 25 May

Lighthouse, 21 Kingland Road, POOLE, BH15 1UG. 7.30pm. 01202 280000. "Grass roots music night."



Lady Maisery

"Lady Maisery are an English folk vocal harmony trio composed of Hannah James (vocals, piano accordion, clogs, foot percussion), Hazel Askew (vocals, melodeon, concertina, harp, bells) and Rowan Rheingans (vocals, fiddle, banjo, bansitar). Lady Maisery sing traditional and contemporary folk songs as well as exploring the tradition of diddling or tune singing, which has nearly died out in England, but is still prevalent in Scandinavia and other parts of Europe."

25 May: The Pound Arts Centre, Pound Pill, CORSHAM, SN13 9HX. 7.30pm. £16. 01249 701628 / poundarts.org.uk.

IAN SHAW TRIO 26 May

Lighthouse, 21 Kingland Road, POOLE, BH15 1UG. 7.45pm. lighthousepoole.co.uk. Jazz.

THE SEARCHERS 26 May

Westlands, Westbourne Close, YEOVIL, BA20 2DD. 7.30pm. £31. westlandseyovil.co.uk.

JOSEPH TONG 26 May

Bridgwater Arts Centre, 11 - 13 Castle Street, BRIDGWATER, TA6 3DD. 7.30pm. £15. 01278 422700.

SOMETHINGSKI 26 May

The Ropemakers, 36 West Street, BRIDPORT, DT6 3QP. 9pm. 01308 421255 / theropemakers.com.

CURSUS CIDER & MUSIC FESTIVAL 26 - 28 May

Cranborne Chase Cider, MINCHINGTON, DT11 8DH. 2pm. £89 / £10. cursusfestival.com. "Friendly, inclusive, small festival in Dorset on bank holiday weekend."

RICHARD DURRANT: 'MUSIC FOR MIDSUMMER' 1 June

Taunton Brewhouse, Coal Orchard, TAUNTON, TA1 1JL. 7.30pm. £16. tauntonbrewhouse.co.uk.

CHAMBERMUSICBOX 2 June

Bridport Arts Centre, 9 South Street, BRIDPORT, DT6 3NR. 11.30am. £14 / £5. bridport-arts.com.

SAM KELLY'S STATION HOUSE 2 June

Corn Exchange, High East Street, DORCHESTER, DT1 1HF. 7.30pm. £16 / £14. dorchesterarts.org.uk.

BIG JOE BONE 2 June

Bridport Arts Centre, 9 South Street, BRIDPORT, DT6 3NR. 7.30pm. £10 / £5. bridport-arts.com.

SARABETH TUCEK 3 June

The Pound Arts Centre, Pound Pill, CORSHAM, SN13 9HX. 7.30pm. £14. 01249 701628 / poundarts.org.uk.

HOT FINGERS 3 June

Bridgwater Arts Centre, 11 - 13 Castle Street, BRIDGWATER, TA6 3DD. 8pm. £15. 01278 422700. Jazz.

BEFORE BREAKFAST 3 June

Taunton Brewhouse, Coal Orchard, TAUNTON, TA1 1JL. 8pm. £12. 01823 283244 / tauntonbrewhouse.co.uk.

TOM OLLENDORFF TRIO 9 June

Cedars Hall, 15 The Liberty, WELLS, BA5 1ST. 7.30pm. £18. cedarshallwells.co.uk. "One of the most exciting young guitarists to emerge on the jazz scene."

MOSCOW DRUG CLUB 9 June

Taunton Brewhouse, Coal Orchard, TAUNTON, TA1 1JL. 7.30pm. £15.50. tauntonbrewhouse.co.uk.

((acoustic))

DISTRIBUTION

We deliver any marketing material

Call Will on 07397 853006

acousticdistribution@btinternet.com

acousticdistribution.co.uk

DARREN HODGE guitar
DAVE LUNNISS guitar
GINA GRIFFIN violin
RON PHELAN double bass

RED HOT GYPSY SWING

SUNDAY 11 JUNE | WATCHET
4pm Pebbles Tavern TA23 9AN
Telephone 01984 634903

*The unforgettable sounds of 1930s Paris.
Swing to the Gypsy Jazz hits of Django Reinhardt and Stéphane Grappelli.*



Palooka 5

"1960s tinged sci-fi surf garage rock from 6Music favourites."

20 May: Clocktower Music, 10a St Michaels Estate, BRIDPORT, DT6 3RR. 7pm. £10. 01308 458077 / clocktowerrecords.co.uk.

FERGUS MCCREADIE TRIO

9 June

Lighthouse, 21 Kingland Road, POOLE, BH15 1UG. 7.45pm. 01202 280000 / lighthousepoole.co.uk. "Jazz and Scottish folk music."



NADINE KHOURI

10 June

The Pound Arts Centre, Pound Pill, CORSHAM, SN13 9HX. 7.30pm. £14. 01249 701628 / poundarts.org.uk. "Nadine Khouri is a musician and songwriter currently based in Marseille. Influenced by dream-pop, film soundtracks and spoken word, this is music born of perennial outsider-status."

IDLIR SHYTI

14 June

The Pound Arts Centre, Pound Pill, CORSHAM, SN13 9HX. 1pm. £8. 01249 701628 / poundarts.org.uk. Cello recital.

MITCH HILLER AND PHILIP CLOUTS

16 June

Bridport Arts Centre, 9 South Street, BRIDPORT, DT6 3NR. 8pm. £14 / £12 / £5. 01308 424901 / bridport-arts.com. Jazz.

JOHN BRAMWELL & THE FULL HARMONIC CONVERGENCE

16 June

The Pound Arts Centre, Pound Pill, CORSHAM, SN13 9HX. 7.30pm. £20. 01249 701628 / poundarts.org.uk.

AVERAGE BLUES BAND

16 June

Bridgwater Arts Centre, 11 - 13 Castle Street, BRIDGWATER, TA6 3DD. 8pm. £15. 01278 422700 / bridgwaterartscentre.co.uk.



THE CHESTERFIELDS MY BED IS AN ISLAND

New single available Friday 2 June on Mr Mellow's Music



From the album **NEW MODERN HOMES**



The_Chesterfields

Mr. Mellow's
MUSIC

EVOLVER MAGAZINE FREE LISTINGS

Exhibition and performance listings should be emailed to listings@evolver.org.uk

Please send ALL information in the following order:

Event, date(s), venue, address (including postcode), times, admission fee (if any), contact number / website, up to 30 words about your event



Priddy Folk Festival

7TH - 9TH JULY 2023
PRIDDY VILLAGE GREEN
SOMERSET BA53BB

TIM EDEY * KRIS DREVER
DERVISH * FARA * THE JEREMIAHS
TARREN * OPA ROSA * KABANTU
OLD BABY MACKEREL * THE DILLYBOYS
BONFIRE RADICALS * HONEY AND THE BEAR
MISHRA * THE RIN TINS * AMADOU DIAGNE
MEDICINE CREEK * THE DRYSTONES
NICK HART * THE OFTEN HERD
SAM EVANS * BRYONY GRIFFITH + ALICE JONES

AND MANY MORE!!!!
 WORKSHOPS, SESSIONS, CEILIDHS DANCE FESTIVAL,
 CHILDRENS' FESTIVAL AND THE FRINGE

TICKETS AND INFO FROM
WWW.PRIDDYFOLK.ORG

DO
THE DORSET OPERA
FESTIVAL
MMXXIII

The home of Country House opera in South West England featuring renowned soloists, a full orchestra and a large chorus of emerging young artists

Marquee bar | Picnics | Formal Dining

Jules Massenet
LE ROI DE LAHORE

Sung in French with English surtitles
Conductor: Jeremy Carnall | Director: Ella Marchment
26, 27 July at 19.00 | Matinée: 29 July at 14.00

Wolfgang Amadeus Mozart
LE NOZZE DI FIGARO

Sung in Italian with English surtitles
Conductor: José Miguel Esandi | Director: Paul Carr
25, 28, 29 July at 19.00 | Matinée: 27 July at 14.00

Coade Theatre, Bryanston, Blandford Forum

Box Office: dorsetopera.com
07570 366 186



Original design by Angelo Perini for the first Italian production of *Le Roi de Lahore* in 1878 | Archivio Storico Ricordi

Music



Lol Goodman Band

"Blues rock."

22 June: The Pound Arts Centre, Pound Pill, CORSHAM, SN13 9HX. 7.30pm. £17. 01249 701628 / poundarts.org.uk.

GLASTENGORE CIDER FESTIVAL 17 June

Harrow Wood Farm, Poplar Lane, Bransgore, CHRISTCHURCH, BH23 8JE. 1pm. £25. 01425 672487 / fuelledby.bigcartel.com. "One day cider and music festival."



BELLA HARDY 17 June

The Pound Arts Centre, Pound Pill, CORSHAM, SN13 9HX. 7.30pm. £17.50. poundarts.org.uk. "BBC Folk Singer of the Year Bella Hardy comes to the Pound with her acclaimed, mesmerising voice and earthy fiddle accompaniments."

EMMA RAWICZ 22 June

Lighthouse, 21 Kingland Road, POOLE, BH15 1UG. 7.45pm. 01202 280000 / lighthousepoole.co.uk. "Aged just 20, Emma is a natural performer and her music has a unique sound, fusing influences produce compositions that blend lilting Afro Cuban inspired grooves, hard hitting modern jazz and funk."

JOHN LAW TRIO 22 June

Corn Exchange, High East Street, DORCHESTER, DT1 1HF. 7.30pm. £16 / £14. dorchesterarts.org.uk.

ROBINSON STONE 23 June

The Pound Arts Centre, Pound Pill, CORSHAM, SN13 9HX. 7.30pm. £13 / £11. poundarts.org.uk.

MELISSA PHELPS & CAROLINE PALMER 23 and 24 June

Tincleton Gallery, The Old School House, TINCLETON, near Dorchester, DT2 8QR. 7.30pm. £15. tincletongallery.com.

TARA MINTON AND EMMA RAWICZ 24 June

The Gateway Theatre, Fore Street, SEATON, EX12 2LD. 7pm. £37.50 / £25. jazzjurassica.co.uk.

GATEHOUSE 29 June

Brown Street, 29a Brown Street, SALISBURY, SP1 2AS. 7.30pm. £15. 07759 477015. "Irish traditional music."

MAD SIMPLE + KIRKY + THE SUNFLOWERS + LIZZY KING 29 June

Lighthouse, 21 Kingland Road, POOLE, BH15 1UG. 7.30pm. 01202 280000 / lighthousepoole.co.uk.

VALMUZ 30 June

Lighthouse, 21 Kingland Road, POOLE, BH15 1UG. 8pm. 01202 280000 / lighthousepoole.co.uk. "Multi ward-winning jazz outfit."

IONA LANE + MALIN LEWIS 30 June

The Pound Arts Centre, Pound Pill, CORSHAM, SN13 9HX. 7.30pm. £14 / £12. 01249 701628 / poundarts.org.uk.

Performance

May and June 2023

TIBETAN MONKS FROM TASHI LHUNPO MONASTERY

2 May

Lighthouse, 21 Kingland Road,
POOLE, BH15 1UG. 7.30pm. 01202
280000 / lighthousepoole.co.uk.

"With the contemplative Buddhist chant and swirling masked dances, accompanied by ancient tantric musical instruments, the monks evoke the atmosphere of sacred Tibet as they open a magical window on to a world of reincarnation and mysticism."

'SHEWOLVES'

5 May

The Pound Arts Centre, Pound Pill,
CORSHAM, SN13 9HX. 7.30pm. £14 /
£12. 01249 701628 /

poundarts.org.uk. *"An uplifting, funny and empowering play about forging friendships, the power of hope and the underestimated smartness of teens."*

'ROSALIE'

5 May

Taunton Brewhouse, Coal Orchard,
TAUNTON, TA1 1JL. 7.45pm. £13.50.
01823 283244 /
tauntonbrewhouse.co.uk.



ROBIN INCE: 'WEAPONS OF EMPATHY'

6 May

The Pound Arts Centre, Pound Pill,
CORSHAM, SN13 9HX. 7.30pm. £14.
01249 701628 / poundarts.org.uk. *"A celebration of the places books can take us, of the ideas that can make wonder and widen the sky. Expect a chaos of words and ideas, love and delight."*



One Man And His Cow

"Farmer Trevor has a big problem. Given just months to live, he is faced with the dilemma of which one of his three children to bequeath his beloved farmstead to. Each has their own beguiling qualities and Trevor just can't choose between them. Then one fateful night in the cowshed, help arrives from the most unlikely of sources. This hilarious rural romp features a multitude of agricultural antics and farmyard frolics, all told with homespun charm and wit and entirely in rhyme and song."

12 May: Memorial Hall, CRANBORNE, BH21 5PZ. 7.30pm. £12 / £8. 01725 517028 / artsreach.co.uk.

17 May: Taunton Brewhouse, Coal Orchard, TAUNTON, TA1 1JL. 7.30pm. £16.50. 01823 283244 / tauntonbrewhouse.co.uk.

27 May: Village Hall, STUDLAND, BH19 3BT. 7.30pm. £12 / £8. 01929 450587 / artsreach.co.uk.

1 June: Bridport Arts Centre, 9 South Street, BRIDPORT, DT6 3NR. 7.30pm. £17 / £15. 01308 424901 / bridport-arts.com.

9 June: The Pound Arts Centre, Pound Pill, CORSHAM, SN13 9HX. 7.30pm. £14 / £12. 01249 701628 / poundarts.org.uk.



Shaftesbury Arts Centre



Empire of Light

Film Special

Saturday 13 May
2.30pm and 7.30pm



Trifarious Ensemble

Music in St Peter's
Church

Friday 26 May, 7.30pm



Sandy Roberts

Exhibition

31 May - 6 June



Jane Barnard and Laura Barnard: 'Line of Sight'

Exhibition

7 - 13 June



Best of Enemies

National Theatre Live
recording

Saturday 24 June, 7pm

11 - 13 Bell Street, Shaftesbury, Dorset SP7 8AR    01747 854321 • shaftesburyartscentre.org.uk



ANTON DU BEKE

10 May

Lighthouse, 21 Kingland Road, POOLE, BH15 1UG. 7.45pm. 01202 280000 / lighthousepoole.co.uk. *"Strictly Come Dancing legend and judge, Anton Du Beke, takes to the stage with his live band, a guest singer and his dancers in a fab-u-lous evening of song, dance and laughter."*

ANDY ASKINS

13 May

Lighthouse, 21 Kingland Road, POOLE, BH15 1UG. 8pm. 01202 280000 / lighthousepoole.co.uk. Comedy.

'SHERLOCK'S EXCELLENT ADVENTURE'

11 May

Corn Exchange, High East Street, DORCHESTER, DT1 1HF. 7.30pm. £14 / £12. 01305 266926 / dorchesterarts.org.uk.

'THE RAGGED TROUSERED PHILANTHROPISTS'

17 May

Corn Exchange, High East Street, DORCHESTER, DT1 1HF. 7pm. £15 / £13. 01305 266926 / dorchesterarts.org.uk.

'THE LITTLE MERMAID'

17 - 20 May

Westlands, Westbourne Close, YEOVIL, BA20 2DD. 7.30pm (Friday and Saturday matinee 2pm). £16. 01935 422884 / westlandsyevovil.co.uk. *"A hauntingly beautiful love story for all ages."*

'THE RAGGED TROUSERED PHILANTHROPISTS'

18 May

Lighthouse, 21 Kingland Road, POOLE, BH15 1UG. 8pm. 01202 280000 / lighthousepoole.co.uk.



George Egg

"George Egg cooks food while making you laugh. This is the best bits from his three previous shows where he brings you the most delicious jokes and the funniest food."

19 May: The Pound Arts Centre, Pound Pill, CORSHAM, SN13 9HX. 7.30pm. £14. 01249 701628 / poundarts.org.uk.

'WALDO'S CIRCUS OF MAGIC AND TERROR'

20 May

Lighthouse, 21 Kingland Road, POOLE, BH15 1UG. 7.30pm. 01202 280000 / lighthousepoole.co.uk. *"Spectacular new circus theatre musical."*

'ME AND MY GIRL'

24 - 27 May

Lighthouse, 21 Kingland Road, POOLE, BH15 1UG. 7.30pm (Saturday matinee 2.30pm). 01202 280000. *"Classic musical comedy."*

'WE WERE PROMISED HONEY!'

26 May

The Pound Arts Centre, Pound Pill, CORSHAM, SN13 9HX. 7.30pm. £14 / £12. poundarts.org.uk. *"A hopeful, hopeless prophecy for earth and humankind. A story of us, our future, of paradise and how we get there in the end."*

JEN BRISTER

27 May

Lighthouse, 21 Kingland Road, POOLE, BH15 1UG. 4 and 8pm. lighthousepoole.co.uk. Comedy.

'JOSEPH AND THE AMAZING TECHNICOLOR DREAMCOAT'

31 May - 3 June

Westlands, Westbourne Close, YEOVIL, BA20 2DD. 7pm (Saturday matinee 2pm). £14. 01935 422884 / westlandsyevovil.co.uk.

GRACE LOVELASS: 'DISGRACEFUL'

1 June

Corn Exchange, High East Street, DORCHESTER, DT1 1HF. 7.30pm. £15 / £13. 01305 266926 / dorchesterarts.org.uk.

ROSA TORR: 'RATTUS RATTUS'

4 June

The Gaggles of Geese, BUCKLAND NEWTON, DT2 7BS. 6.30pm. £5. 01300 345249 / artsreach.co.uk. *"It's New Year's Day 2015 and Rosa's dad has made a life-changing resolution. At the same time, a rat sneaks into her family home and so begins an epic battle for control of the house."*



'DINOSAURS AND ALL THAT RUBBISH'

4 June

Bridport Arts Centre, 9 South Street, BRIDPORT, DT6 3NR. 2.30pm. £12 / £8. bridport-arts.com.

ROWAN MCCABE

8 June

Bridport Arts Centre, 9 South Street, BRIDPORT, DT6 3NR. 7.30pm. £10 / £8 / £5. 01308 424901 / bridport-arts.com. Poetry.

'MURDER SHE DIDN'T WRITE'

8 June

Taunton Brewhouse, Coal Orchard, TAUNTON, TA1 1JL. 7.30pm. 01823 283244 / tauntonbrewhouse.co.uk. *"A classic murder mystery is created on the spot in this ingenious and hilarious show from The Bristol Improv Theatre's resident company."*



Great art and
the best coffee



The Slade Centre, The Square, Gillingham, Dorset SP8 4AY
Tuesday - Saturday 9am - 4pm • 07775 431652 • sladecentre.com



Godot Is A Woman

"A whip-smart interrogation of gender, authorial copyright and the cultural significance of Madonna's 1989 album, Like a Prayer."

20 May: Taunton Brewhouse, Coal Orchard, TAUNTON, TA1 1JL. 7.45pm. 01823 283244 / tauntonbrewhouse.co.uk.

'CELEBRATE ME'

8 June

Merlin Theatre, Bath Road, FROME, BA11 2HG. 8pm. £14. 01373 465949 / merlintheatre.co.uk. "Behind the party balloons 92-year-old Barbara has a secret which could shake up the relationships of six women. New comedy drama about the pain and beauty of the freedom to choose."

'WE ARE WHAT WE OVERCOME'

9 June

Taunton Brewhouse, Coal Orchard, TAUNTON, TA1 1JL. 7.45pm. £13. 01823 283244 / tauntonbrewhouse.co.uk. "One man's journey to good mental health via a very bad idea."

'CELEBRATE ME'

9 June

Rondo Theatre, St Saviour's Road, BATH, BA1 6RT. 8pm. £14 / £12. 0333 666 3366. See 8 June.

RHOD GILBERT: 'THE BOOK OF JOHN'

10 June

Westlands, Westbourne Close, YEOVIL, BA20 2DD. 8pm. £28.50. westlandsyeovil.co.uk. Comedy.

'JOHN HEGLEY'S BISCUIT OF DESTINY'

10 June

Sandy Hill Arts, Sandy Hill Lane, CORFE CASTLE, BH20 5JF. 7.30pm. £12 / £8. sandyhillarts.co.uk. "Expect a celebratory jamboree chock-full of daft and deft wordplay, sing-along numbers and against all advice, a selection of 'drawings' and other curiosities."

MIKE GUNN + MICHAEL FABBRI + MAD ROB

10 June

Lighthouse, 21 Kingland Road, POOLE, BH15 1UG. 7.30pm. lighthousepoole.co.uk. Comedy.

'IN THE NIGHT GARDEN'

10 and 11 June

Lighthouse, 21 Kingland Road, POOLE, BH15 1UG. Saturday 1 and 4pm, Sunday 10am. 01202 280000 / lighthousepoole.co.uk. "Join Igglepiggle as he looks for his friends in the Night Garden by following their funny sounds until he finds them all. Your little ones will be amazed when they see a very special visit from the amazing flying Pinky Ponk."



PURBECK ART WEEKS

Festival

2023



27 May – 11 June

Open studios | Exhibitions | Events



For more information and event ticket sales visit
www.purbeckartweeksfestival.co.uk



ARTCETERA

EST. 1970

Picture Framing & Artists Materials

01202 423408 artcetera853@gmail.com 853 Christchurch Road BH7 6AR

Subscribe to **EVOLVER** MAGAZINE online at **evolver.org.uk**

Six bi-monthly issues for £25





**CALLUM PATRICK HUGHES:
'THIRST'**

11 June

The Royal Oak, DRIMPTON, DT8 3RD. 6.30pm. £5. 01308 867617 / artsreach.co.uk. "A show about love - love of pubs, love of community, love of family. And a reminder that not everything you love is necessarily good for you..."

**CALLUM PATRICK HUGHES:
'THIRST'**

12 June

The Mowlem Showbar, SWANAGE, BH19 1DD. 8pm. £5. 01929 422239 / artsreach.co.uk. See 11 June.

**BRIAN BILSTON
13 June**

The Pound Arts Centre, Pound Pill, CORSHAM, SN13 9HX. 8pm. £14. 01249 701628 / poundarts.org.uk. "The Banksy of poetry"

'AROUND THE WORLD IN 80 DAYS'

13 - 17 June

Lighthouse, 21 Kingland Road, POOLE, BH15 1UG. Tuesday, Friday and Saturday 7.30pm, Wednesday 5pm, Thursday 2 and 7pm (Saturday matinee 2.30pm). 01202 280000 / lighthousepoole.co.uk. "This colourful family production tells Jules Verne's story as you've never seen it before. A band of travelling circus performers set out to recreate the adventures of Phileas Fogg, but there's a story within a story as fact meets fiction in the incredible true tale of American journalist Nellie Bly who emulated Phileas Fogg in her own record-breaking trip around the world."



Swim

"Filled with humour and heart, live music and projection, SWIM is a tender tale based on a true story of how outdoor swimming keeps one woman and her new friends afloat. Written and performed by Liz Richardson, and featuring live music and video projection."

20 June: Lighthouse, 21 Kingland Road, POOLE, BH15 1UG. 8pm. 01202 280000 / lighthousepoole.co.uk.

ALFIE MOORE: 'FAIR COP UNLEASHED'

14 June

Bridport Arts Centre, 9 South Street, BRIDPORT, DT6 3NR. 8pm. £16. 01308 424901 / bridport-arts.com.

**DEBUT DANCE COMPANY:
'BODIES OF WATER'**

17 June

The Pound Arts Centre, Pound Pill, CORSHAM, SN13 9HX. 6pm. Free admission. 01249 701628 / poundarts.org.uk.

MAX & IVAN: 'LIFE, CHOICES'
18 June

The Pound Arts Centre, Pound Pill, CORSHAM, SN13 9HX. 7pm. £12. poundarts.org.uk. "Edinburgh Comedy Award nominees."

THE HANDLEBARDS: 'A MIDSUMMER NIGHT'S DREAM'
23 June

Maumbury Rings, Weymouth Avenue, DORCHESTER, DT1 1QZ. 6pm. £16 / £14. 01305 266926.

'ANNE BOLEYN: WOLF AT THE DOOR'

24 June

Lighthouse, 21 Kingland Road, POOLE, BH15 1UG. 8pm. lighthousepoole.co.uk. "A musical tale of love and Tudor tragedy."



'THE REMAINS OF LOGAN DANKWORTH'

28 June

Lighthouse, 21 Kingland Road, POOLE, BH15 1UG. 8pm. 01202 280000 / lighthousepoole.co.uk. "In the third of his trilogy of political verse plays, poet Luke Wright looks at trust, fatherhood and family in the age of Brexit."

**THE SCUMMY MUMMIES
28 and 29 June**

Taunton Brewhouse, Coal Orchard, TAUNTON, TA1 1JL. 7.30pm. £22. tauntonbrewhouse.co.uk. "Songs, sketches and stand-up."

**THE SCUMMY MUMMIES
30 June**

Cedars Hall, 15 The Liberty, WELLS, BA5 1ST. 7.30pm. £21 cedarshallwells.co.uk. See 28 and 29 June.

Let's get creative!

At Aztec Media, we offer tailored creative services for artists, galleries, and art venues, including web design, graphic design, photography, and social media campaigns. Our expertise helps clients stand out in a competitive landscape while allowing them to focus on what they do best - being creative.



WEB DESIGN // GRAPHIC DESIGN // PRINT
PHOTOGRAPHY // SOCIAL MEDIA // SEO

01935 477 073 | aztec.media

Evolver Prize 2023

First Prize £1,000 + Evolver Magazine 132 Front Cover

CALLING ALL ARTISTS!

EVOLVER MAGAZINE

ARTISTS, PHOTOGRAPHERS and DESIGNERS are invited to submit actual cover size 2D work in any media for selection for the **FRONT COVER OF EVOLVER MAGAZINE 132** (July and August 2023 issue) + **£1,000**

The judges will also select an additional 49 WORKS for a **TOP 50 EXHIBITION** at Yeovil Art Space (15 July - 26 August 2023) and publication in EVOLVER MAGAZINE 132

JUDGES:

Simon Barber (Editor, Evolver)

Naomi Kendall (Winner, Evolver Prize 2022)

Zoe Li (Artistic Director, Yeovil Art Space)

Dave Watts (Photographer)

DEADLINE: THURSDAY 18 MAY 2023

Further information:

evolver.org.uk/evolverprize

prize@evolver.org.uk



NAME	
ADDRESS	
	POSTCODE
TELEPHONE	EMAIL

Evolver Prize 2023 Entry Form

TITLE OF WORK	MEDIUM	SELLING PRICE *
1		
2		
3		

SUBMISSION FEE (£10 PER WORK):

£

* Yeovil Art Space will take a 30% commission from this price if the work is exhibited and sold

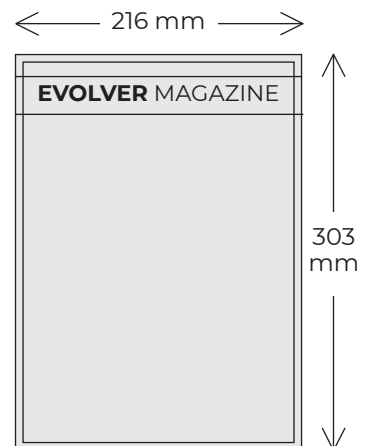
☐ I HAVE PAID ONLINE AT PAYMENTS.EVOLVER.ORG.UK AND MY REFERENCE NUMBER IS _____
We accept payments by credit / debit card online at payments.evolver.org.uk
Alternatively, go to evolver.org.uk and click on the Evolver Prize heading

☐ I HAVE PAID OVER THE PHONE **01935 808441** AND MY REFERENCE NUMBER IS _____
We accept payments by credit / debit card over the phone, Monday - Thursday, 9am - 4pm

Send **ARTWORK + ENTRY FORM + SAE FOR RETURN OF ARTWORK** to: EVOLVER PRIZE 2023, EVOLVER MEDIA, 8 BUCKLAND ROAD, PEN MILL TRADING ESTATE, YEOVIL, SOMERSET BA21 5EA

DEADLINE: THURSDAY 18 MAY 2023

☐ Please tick box if you do not wish to be added to the Evolver Magazine and Yeovil Art Space mailing lists



SUBMISSIONS

The image size of each submitted work must measure 216 x 303 mm (the actual size of our front cover plus an extra 3 mm all round)

The work should be an unframed original artwork or high quality print that can be sold at the exhibition

Up to 3 works may be submitted
A submission fee of £10 per work will be charged

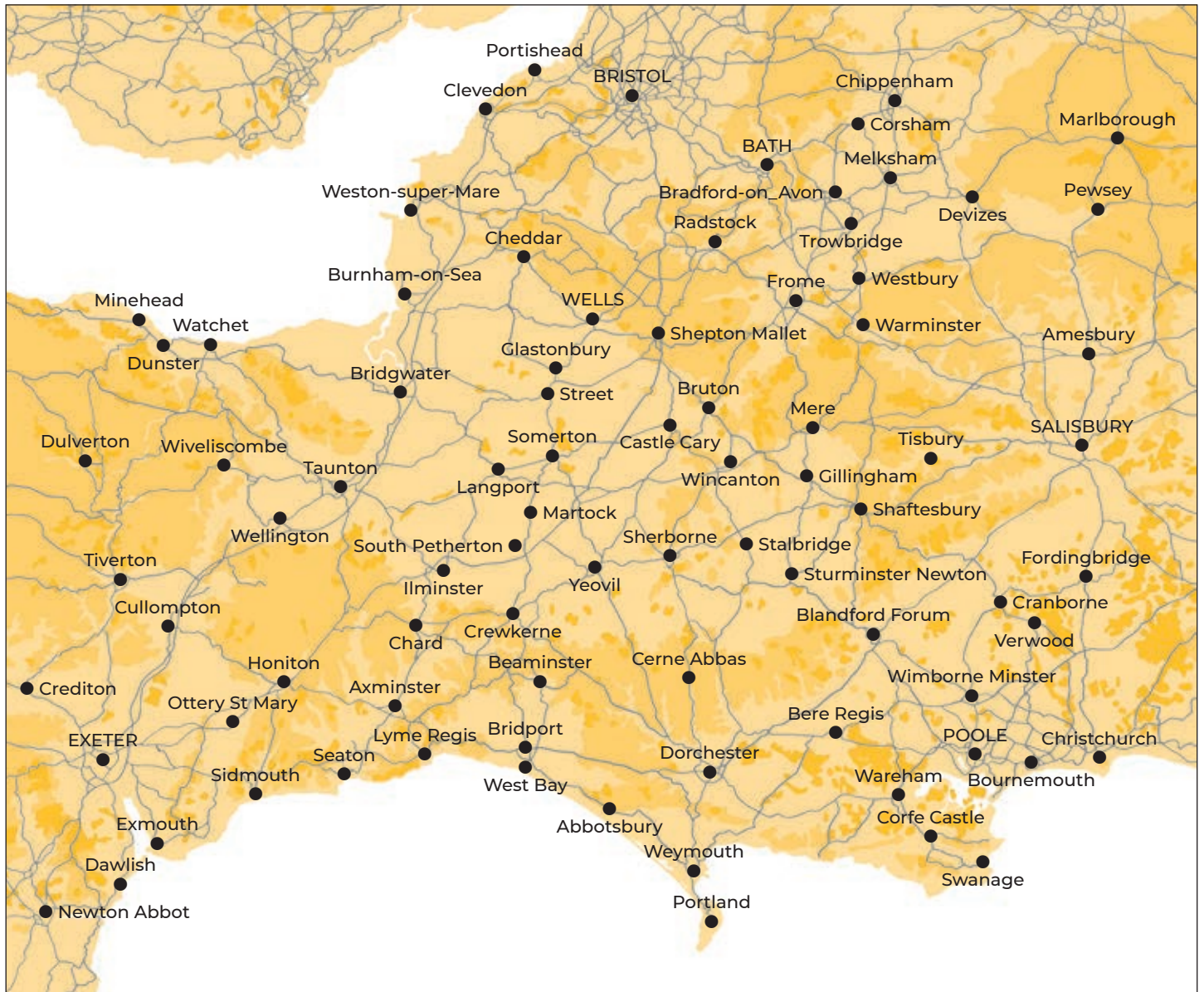
Please also supply a stamped addressed envelope for the return of your artwork

PLEASE NOTE

The judges will definitely not be looking for a particular style of work
The work submitted should be anything that you believe would make a great front cover

EVOLVER MAGAZINE

WESSEX



Follow **EVOLVER** MAGAZINE on Instagram

evolvermagazine



EVOLVER MAGAZINE

THE WESSEX ARTS AND CULTURE GUIDE

Editor SIMON BARBER

Assisted by SUZY RUSHBROOK

News Editor SUZY RUSHBROOK

suzy@evolver.org.uk

Evolver Writer FIONA ROBINSON

fionarobinson.com

Graphic Design SIMON BARBER

Website AZTEC MEDIA

Front Cover

'HOTMESS UNHINGED' by DAVID SHILLINGLAW

EVOLVER MEDIA

8 BUCKLAND ROAD, PEN MILL TRADING ESTATE,
YEovil, SOMERSET BA21 5EA



Email simon@evolver.org.uk

Telephone 01935 808441

Website evolver.org.uk

Instagram [evolvermagazine](https://www.instagram.com/evolvermagazine)

Published by EVOLVER MEDIA LIMITED

Pre-Press by FLAYDEMOUSE

01935 479453 / flaydemouse.com

Printed by STEPHENS & GEORGE

stephensandgeorge.co.uk

Distributed by ACOUSTIC

07397 853006 / acousticdistribution.co.uk

DEADLINE FOR EVOLVER MAGAZINE 132

July and August 2023

WEDNESDAY 7 JUNE

Outlets and Sponsors

EVOLVER MAGAZINE is available **FREE** at the following Wessex outlets:

ABBOTSBURY: Abbotsbury Studio, Dancel Gallery. AXMINSTER: Archway Bookshop, Axminster Arts Café, Sublyme Café. BATH: Bath Artists' Studios, Beaux Arts, The Bell Inn, The Edge / ICIA, Holburne Museum of Art, Michael Tippett Centre, University of Bath, Victoria Art Gallery. BEAMINSTER: Little Toller Books. BLANDFORD: Blandford Fashion Museum, Bryanston Arts Centre, Forum Café, Forum Framers. BOSCOMBE: Artcetera. BOURNEMOUTH: All Fired Up, Miramar Hotel, Pavilion Dance, Royal Bath Hotel, Russell-Cotes Museum & Art Gallery. BOWER HINTON: The Hollies Hotel. BRADFORD ON AVON: Wiltshire Music Centre. BRIDGWATER: Bridgewater Arts Centre, Clayhill Arts, Engine Room. BRIDPORT: Beach & Barnicott, Bridport Arts Centre, Bridport Old Books, The Bull Hotel, Clocktower Music, Literary and Scientific Institute, Lyric Theatre. BRISTOL: Arnolfini, Bocabar, The Bristol Artisan, Bristol Beacon, Bristol Fine Art, Centrespace, Clifton Fine Art, Create Centre, Folk House, Jamaica Street Artists, Lime Tree Gallery, Bristol Old Vic, PRSC Gallery, RWA, Spike Island, St George's, Tobacco Factory, Trinity Centre, UWE, Watershed. BROADWINDSOR: Redlands Yard. BRUTON: At The Chapel, Hauser and Wirth. BUDLEIGH SALTERTON: Brook Gallery. BURNHAM ON SEA: Princess Theatre & Arts Centre, Seabreeze Gallery. CASTLE CARY: Bailey Hill Bookshop, David Simon Gallery, Trowbridge Gallery. CHARD: Art Café, Barleymow's, Hornsbury Mill Hotel. CHARLTON: Glebe Gallery. CHARMINSTER: Flux Art Supplies. CHEDDAR: Cheddar Art School, Sketch Café. CHEDDON FITZPAINE: Hestercombe Gallery. CHESIL BEACH: Fine Foundation Centre. CHIPPENHAM: Chippenham Museum. CHRISTCHURCH: Hatch Gallery, Hayloft Gallery, Red House Museum, Regent Centre. CLEVEDON: Fizz Gallery, Studio 3. CORFE CASTLE: Boilerhouse Gallery, Gallery 41, Morton House Hotel, Village Stores. CORSHAM: Pound Arts. CREWKERNE: Art4All / ArtyCrafty. CROCKERTON: Bull Mill Arts. CROWCOMBE: Halsway Manor. CULLOMPTON: Cullompton Community College. CULMSTOCK: The Strand Stores. DEVIZES: Wiltshire Museum. DORCHESTER: Dorchester Arts, Duke's, Frank Herring & Sons, Gallery on The Square, The Little Keep, Vinyl Van. EAST LAMBROOK: East Lambrook Manor Gardens. EXETER: Academy of Music, Barnfield Theatre, The Cavern, Corn Exchange, Exeter School of Art, Glorious Art Cafe, Phoenix Arts Centre, Royal Albert Memorial Museum, Southgate Gallery. FROME: Bat Print Studio, Black Swan Arts, Cheese and Grain, Fiat Lux, Merlin Theatre, Mount, Raves From The Grave, Rook Lane Arts, Rise Centre, Whittox Gallery. GILLINGHAM: The Idea Works, Slade Centre. GLASTONBURY: Abbey Muse

Gallery, Bocabar, Facets Of Avalon, Glastonbury Galleries, Heart Of The Tribe Gallery, Red Brick Building, Rural Life Museum. HEMYOCK: Healthy Living Centre. HESTERCOMBE: Hestercombe Gallery. HIGHCLIFFE: In The Frame. HOLTEN HEATH: Holton Lee. HONITON: The Beehive, Boston Tea Party, Hybrid Gallery, School Of Art And Wellbeing, Strummer Pink, Thelma Hulbert Gallery. ILMINSTER: Courtyard Gallery Cafe, Dillington House, Ilminster Arts Centre. KEYNSHAM: Chocolate Quarter. LANGPORT: 4 Every Cloud, Art Tea Zen, Hanging Gallery, Shakspeare Glass. LYME REGIS: Blue Lias, Coombe Street Gallery, Fine Art Framing, Marine Theatre, Studio 19. LYTCHETT MINSTER: Barn Cafe, Courtyard Craft Centre. MARLBOROUGH: Framemakers, Rabley Contemporary Drawing Centre. MARTOCK: Martock Gallery Yandles Cafe. MILTON ABBAS: Dorset Crafty Barn, Luccombe Hub. MINEHEAD: Courtyard Framing, Leo Davey Gallery, Regal Theatre. MORCOMBELAKE: Artwave West. MUCHELNEY: John Leach Gallery. NEW MILTON: Forest Arts. NEWTOWN: R. C Arts. NORTH CURRY: Community Café. OTTERTON: Otterton Mill. PENN HILL: Josephine Wall Shop. PEWSEY: McNeill Gallery. POOLE: Arts University Bournemouth, Boiler Room Records, Bournemouth University Atrium Gallery, Guildhall Gallery, Lighthouse, Gallery Upstairs, Originals, Poole Museum, Poole Violins, Towngate Gallery And Framing. PORLOCK: Churchgate Gallery, Melody Art. PORTLAND: B-Side Outpost, White Stones. POUNDBURY: Gallery On The Square, Store 6. SALISBURY: City Hall, Fisherton Mill, Framemakers, Noble Art Supplies, Salisbury Arts Centre, Salisbury Museum, Salisbury Playhouse, Studio 53, Wiltshire Gallery, Young Gallery. SEATON: Arts Café, Savooni Art Gallery. SEAVINGTON: Village Shop. SHAFTESBURY: The Cygnet, Grosvenor Hotel, Pictureframes, Shaftesbury Arts Centre. SHEPTON MALLET: One Craft Gallery. SHERBORNE: Artslink, Elementum Gallery, New Digby Hall, Old Barn Framing Gallery, Winstone's. SIDMOUTH: East Devon Art Academy, Flo and Us, Kennaway House, Winstone's. SOMERTON: ACE Arts, Gifted Company & Gallery Coffee Shop. SOUTH CADBURY: Chapel Cross Tea Rooms. SOUTH PETHERTON: David Hall. STALBRIDGE: Dike & Sons. STOBOROUGH: Furzebrook Studios. STOKES GREGORY: Willow & Wetlands Centre. STOURHEAD: First View Gallery. STREET: Millfield School Atkinson Gallery, Strode Theatre. STURMINSTER NEWTON: The Exchange, Poet's Corner, Wessex Photographic. SWANAGE: 4Matt Framers and Gallery, Durlston Castle, Hollinghead Studio Gallery, L'Artishe Gallery, Mowlem Theatre, Mulberry Bush Gallery, Purbeck New Wave Gallery, Quarr Gallery, Sansom Gallery. SYMONDSBURY: Sou'-Sou'-

West. TAUNTON: Brewhouse Theatre, CIC CIC, Fine Art And Framing, Jane Amour, Mount Somerset Hotel, Quantock Art And Framing, Queen's College, Tacchi-Morris Arts Centre, University Centre Somerset. TINCLETON: Tincleton Gallery. TISBURY: Messums Wiltshire. TIVERTON: Lantic Gallery. TROWBRIDGE: Arc Theatre, Court Street Gallery, Drawing Projects, The Lamb, Trowbridge Arts, Trowbridge Museum. VERWOOD: Campbell & Rose Gallery, The Hub. WAREHAM: Creative Gallery, Priory Hotel, Rex Cinema. WATCHET: East Quay, Watchet Gallery. WELLINGTON: Old Brick Workshop. WELLS: A2 Gallery, Ardelli Art, Bishop's Eye, Good Earth, Heritage Courtyard Studios, Somerset Guild of Craftsmen Gallery and Shop. WEST BAY: Sladers Yard. WEST COKER: Lanes, Old School Room. WESTHAY: Somerset Crafts. WESTON-SUPER-MARE: Frame Station, Playhouse, Weston College. WEYMOUTH: Weymouth College, Weymouth Pavilion. WILLITON: Breeze Art Gallery. WIMBORNE: Allendale House, Square Records, Walford Mill Craft Centre. WINSCOMBE: Sidcot Arts Studio. WIVELISCOMBE: Community Office. WOODBURY: Woodbury Studio Gallery. WORTH MATRAVERS: Burngate Stone Centre. WRINGTON: Barleywood Studios. YEOVIL: Octagon Theatre, Yeovil Art Space. YETMINSTER: Old School Gallery.

Plus selected TOURIST INFORMATION CENTRES and LIBRARIES throughout Wessex

EVOLVER SPONSORS

ACE Arts
Acoustic Distribution
Artcetera
Aztec Media
B-Side
Black Swan Arts
Boilerhouse Gallery
Bridport Arts Centre
Close Ltd
The Creative Gallery
Dorset Visual Arts
East Quay
Gallery on the Square
Heart of the Tribe Gallery
Lyme Bay Arts
Shaftesbury Arts Centre
The Slade Centre
Sladers Yard
Somerset Art Works
Tincleton Gallery
The Vanner Gallery
Walford Mill
Yeovil Art Space

Our **EVOLVER SPONSORS** make Evolver Magazine possible. We couldn't do it without their ongoing support and advertising, so we make sure they get priority coverage in these pages.

If you'd like to join them, please email simon@evolver.org.uk to find out about our Sponsorship offer (for example our quarter page Evolver Sponsors pay £175 instead of £250 for each bi-monthly advert).



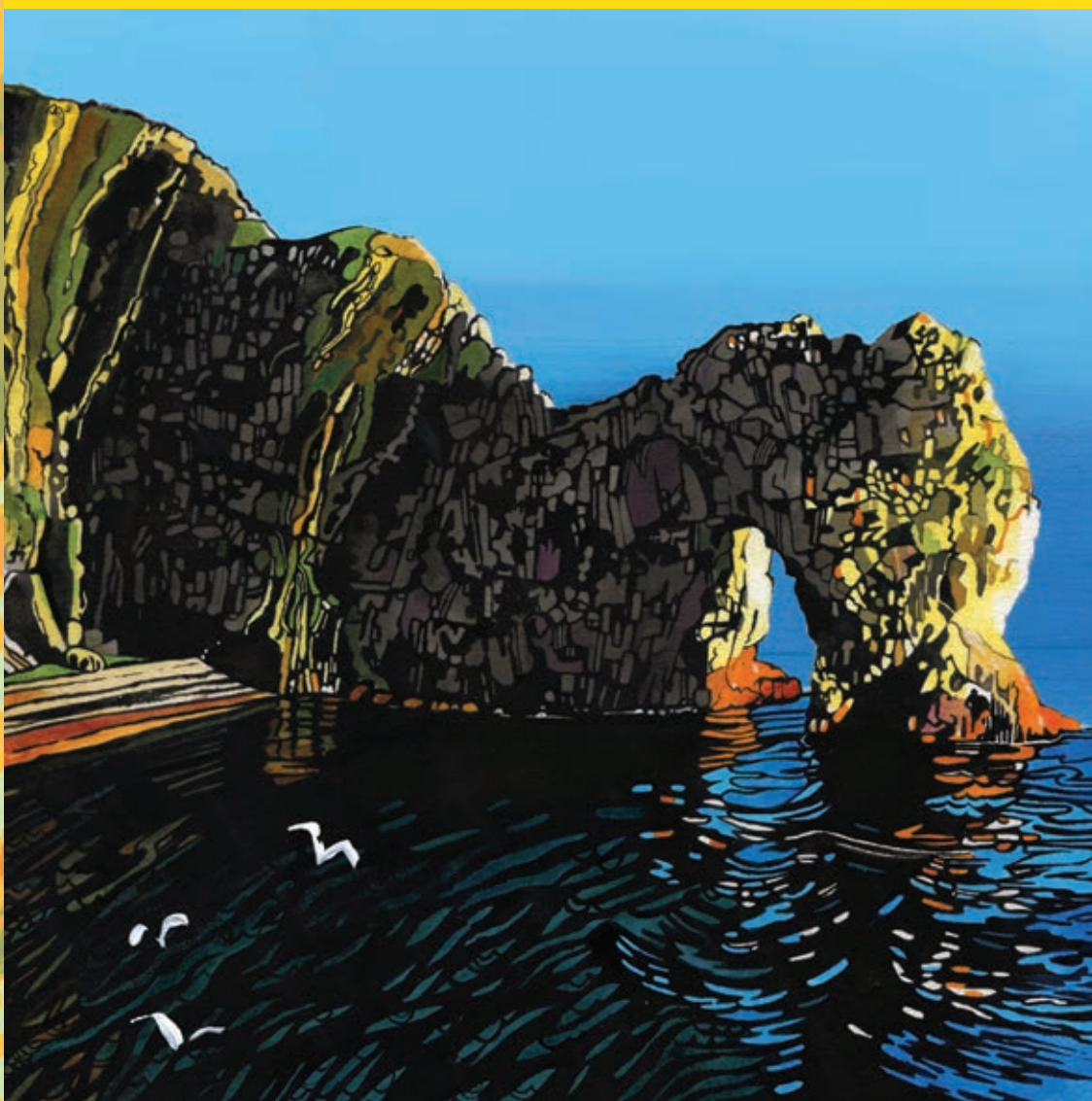
Paintings by Leo Davey

THE DORSET ART MAP



EVOLVER
ARTS
AND
CULTURE
MAP

No. 1 in a series



OUT NOW! THE FIRST **EVOLVER** ARTS AND CULTURE MAP



((acoustic))
DISTRIBUTION