

EVOLVER MAGAZINE

THE **FREE** WESSEX ARTS AND CULTURE GUIDE





RWA

170 Annual Open Exhibition

A celebration of the most exciting
art and artists of today.

9 September – 14 January 2024

rwaopen.co.uk

#RWA170 #RWAGalleries

Royal West of England Academy,
Queens Road, Clifton, Bristol, BS8 1PX

Leslie Glenn Damhus, Monkey and the Cock Helmet, 2023.

This exhibition is sponsored by



InsideOut

DORSET

Extraordinary events
in extraordinary places
15–24 September 2023

Moors Valley Country Park & Forest
Wimborne
Poole
Bere Regis
Weymouth

FREE
outdoor events
for the whole
family



activate
performing arts



Supported using public funding by
**ARTS COUNCIL
ENGLAND**

insideoutdorset.co.uk



EVOLVER MAGAZINE 133

September and October 2023



Exhibit A

Nick Andrew: Spire from East-by-North

Mixed media drawing, 76 x 56 cm

ARTIST'S STATEMENT: "This project has given me a wonderful excuse to explore the beautiful and varied landscapes around Salisbury, guided by 32 points of the compass, making drawings from downland, wooded ridges, hill forts, farmland and ancient sites, discovering views of the Salisbury Cathedral spire, some so distant that it appears no bigger than a thorn glinting in the sunlight, such as the south-southeast view from the National Trust grounds of Phipps House in Dinton, nine miles away, or the view from windswept Figsbury Ring, five miles to the northeast. And some closer, with hints of the urban surroundings, such as from north-northwest at Fisherton Farm allotments, just a mile and a half away."

'SPIRE'

9 September - 7 October: Fisherton Mill, 108 Fisherton Street, SALISBURY, SP2 7QY. Monday - Friday 10am - 5pm, Saturday 9.30am - 5.30pm. 01722 415121 / fishertonmill.co.uk

nickandrewdrawingprojects.wordpress.com/spire



SOUND OF YEOVIL

16 SEPT - 18 NOV, 2023
exhibitions • workshops • live music

Locations across town, Yeovil Art Space, EPS Yeovil, Yeovil Library and more ...

yeovilartspace.uk/soundofyeovil



Headlines

September and October 2023



HEINRICH & PALMER 'ENTRY 4'

B-Side Festival

Portland has hit the headlines lately with the controversial Bibby Stockholm barge to house asylum seekers. But this incredible island is much more than one story and has many more to share. The limestone isle is an extraordinary place, quite unlike anywhere else in Dorset. A place of beauty and history, intrigue and mystery, a place of contrasts, microcosms and far horizons.

This year is the final year of the b-side Festival's Heritage Lottery project *This Land* - a two year programme of knowledge sharing and creative exploration between residents, visiting researchers and artists.

Anna Heinrich and Leon Palmer have been working with 3D scan technology, photogrammetry and archival imagery to create *Entry* - a mesmerising and hypnotic film installation of ghost-like, ephemeral images like huge futuristic 3D engravings which appear to simultaneously tie the past and present together.

Artist duo Knead (Ishwari Bhalerao and Leonie Rousham) collaborated with Portland residents to create the *Weather Or Not Station*, gathering memories, stories, rumours and

imaginings of the past, present and future, weaving these into a series of forecast broadcasts including an audio walk and game of predication.

At the other end of the island, at the windswept southernmost tip of the isle in a former lighthouse, is Emily Tracy's installation *Constant Effort*. Installed in the tower of Portland Bird Observatory, her work visualises the data collected by birders over the past 60 years of watching the skies.

And the grand finale - performed in the last landscape at the coming of the dusk, *UnCommon Land* - is a new ritual created for Portland by landscape theatre company Wildworks.

Plus of course there is the b-side Fringe, the Portland Parade and lots of activities, workshops, talks and screenings. Prepare to have your senses tantalised, to connect with others around you, and to experience the landscape like never before.

7 - 10 September: PORTLAND, Dorset. b-side.org.uk
The b-side Fringe runs until 17 September



Hubert Lancaster Harcourt's family are fundraising for the exhibition and long-term preservation of this unique archive. Please scan the QR code for more details.

Hubert Lancaster Harcourt WARTIME ARTIST

Hubert Lancaster Harcourt (1911-1987) was a commercial artist who also painted scenes of his time as a corporal in the Pioneer Corps during WWII. His work has been hidden away in an attic since his death in 1987 and isn't widely known. This exhibition brings his extraordinarily evocative sketches, watercolours and paintings, including pre-war idyllic work, to the public for the first time.

6 October - 4 November, 2023

The Pound Arts Centre, Corsham, Wiltshire, SN13 9HX

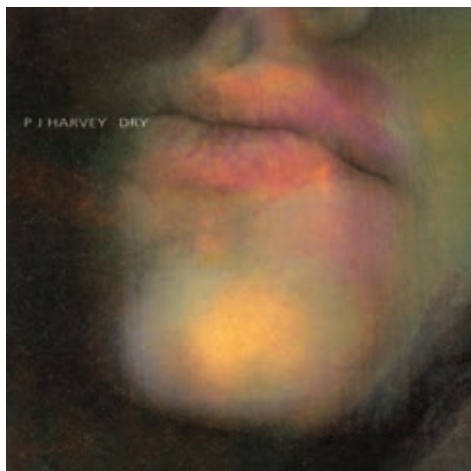
(01249) 701628 | poundarts.org.uk | @poundarts

**Pound
Arts**

Headlines



THE CHESTERFIELDS



PJ HARVEY



THE MOB



AUTOMATIC DLAMINI



THE BEAT HOTEL



BIKINI MUTANTS

Sound of Yeovil

Sound of Yeovil, the next instalment of the *Story of Yeovil* project, launches on Saturday 16th September with a day of live music, exhibitions, radio broadcast, workshops and more in several locations throughout Yeovil's town centre, including in-store live music sessions from local artists at EPS Yeovil and HMV, with live radio from Repeater Radio capturing the day's events from Yeovil Art Space.

The line-up continues into the night for the *Wyrd Wild West Festival* at the 94 Club, an evening of experimental music, sound art and visuals from the depths of the west country and beyond, all curated by *Sound of Yeovil* producer Stephen Ives, sound artist and Director of EPS Yeovil.

Taking place at Yeovil Art Space, exhibitions for the project include an extensive sharing from Yeovil's music scene history, including a large archive of vintage recordings and fanzines, posters, fliers, ticket stubs and more. The project explores the relationship between the visual and the audio and most importantly shares stories and experiences from the Yeovil

community. Exhibitions also include heritage displays at the Yeovil Library put together by the Community Curatorial Group on the theme of sound in Yeovil and online exhibitions in Yeovil's Virtual Museum from local historian Bob Osborn, with a focus on entertainment and youth culture from the past.

Sound of Yeovil is part of a wider programme of exhibitions and events, the *Story of Yeovil*, a co-creation project with the town's community. Looking at the past, present and future, the project gathers stories from diverse perspectives through creative activities through three main themes: *View of Yeovil*, *Sound of Yeovil* and *Taste of Yeovil* and creates events, exhibitions and workshops as many ways for the community and all ages to get involved.

16 September - 18 November: Yeovil Art Space, Unit 13 - 15 Vicarage Walk, Quedam Shopping Centre, YEOVIL, BA20 1EU. Wednesday - Friday 10am - 4pm, Saturday 10am - 5pm.

yeovilartspace.uk/soundofyeovil



FREE ADMISSION | DONATIONS WELCOME

JOHN ANDREW A LIFE IN LETTERS

29 July – 15 October 2023

Kindly sponsored by the Friends of the Red House Museum, CADarts and Pheonix Marble and Granite Ltd



Red House Museum and Gardens
Quay Road | Christchurch | Dorset | BH23 1BU

hampshireculture.org.uk

Hampshire Cultural Trust is a registered charity (no. 1158583) and company (no. 08986225) in England and Wales.



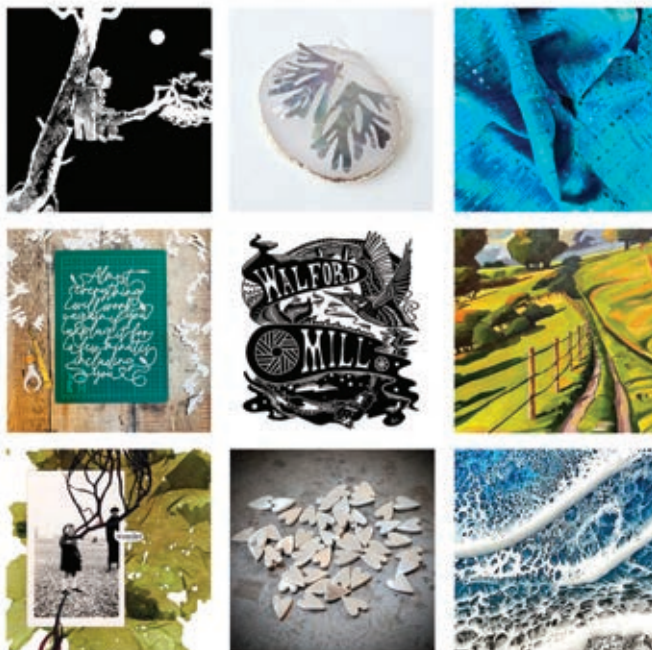
SHIRLEY COUSINS

SWALLOWING THE MOON



EXPLORING A LIFETIME OF IDEAS
19 AUGUST - SEPTEMBER 23 2023

THE SLADE CENTRE
THE SQUARE, GILLINGHAM
SP8 4AY
www.thesladecentre.com



WALFORD MILL

Contemporary art and craft gallery in a spectacular 16th Century Mill

EXHIBITIONS | ADULT AND CHILDREN'S WORKSHOPS
OPEN STUDIOS | INDEPENDENT SHOPS
COURTYARD MARKETS | CAFE

OPEN - WEDS - SAT 10-5PM - SUN 11-4PM

Knobcrook Road, Wimborne, Dorset, BH21 1NL

www.walfordmillcrafts.co.uk

@walfordmill

Tincleton Gallery

contemporary fine art in Dorset

Autumn exhibition

gallery & guest artists
Fri 8 Sep 2023 - Fri 5 Jan 2024



"The old boatyard, Cremyll, Cornwall" by Kim Pragnell

The Old School House, Tincleton, near Dorchester, DT2 8QR
Friday / Saturday / Sunday / Monday • 10am - 4pm
01305 848909 • tinctongallery.com

OUTSTANDING



'Yesterday's everyday' (detail) by Peter Greenwood

For over a century, the Bournemouth Arts Club has been setting the standard in contemporary art for Bournemouth and the surrounding area.

We are always interested in attracting new members to bring fresh ideas and energy to the group.

By becoming an Associate Member you can take part in all Club activities - workshops, talks, trips and social events - except exhibiting your work with us. Full Membership includes exhibitions and is by selection only.

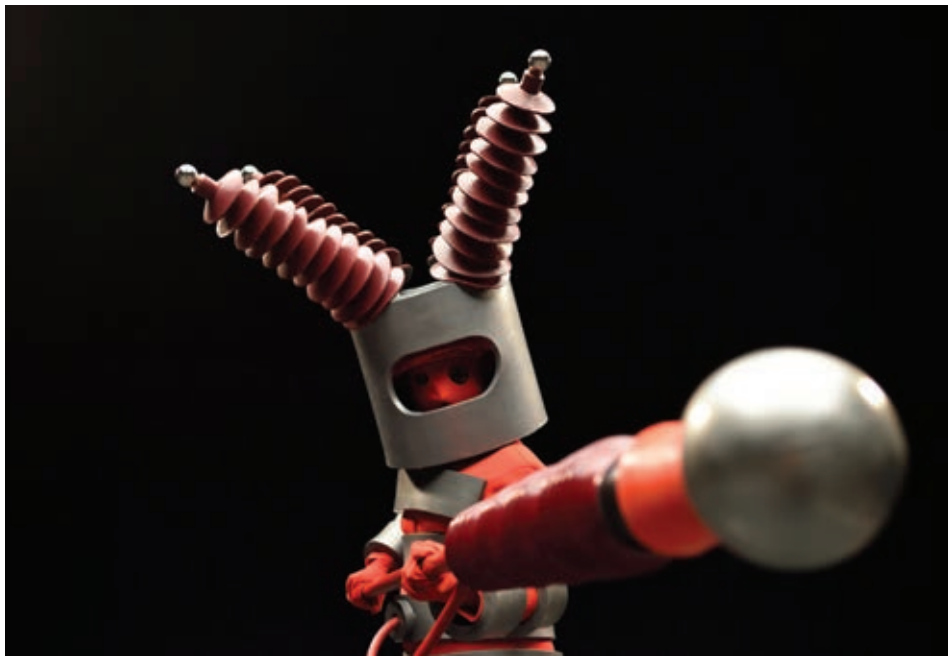
Think you're good enough? Find out more today.

www.bournemouthartsclub.co.uk

Southern
CONTEMPORARIES

Bournemouth
ARTS CLUB

Headlines



Smith & Lyall: Music Response 001

Music Response 001 is the first in a series of installations by artists Smith & Lyall. These exhibitions see their critically-acclaimed work for the Chemical Brothers live visuals re-imagined in different contexts. In this first incarnation of *Music Response*, the costumes from the live visuals will be on display in an empty shop front on the high street in the Somerset town of Wincanton. The costumes were co-designed with longtime Smith & Lyall creative collaborator costume designer Kate Tabor, and this will be the first time the majority of the pieces have been shown to the public.

The costumes will be exhibited on mannequins and plinths alongside prints of how they appear in The Chemical Brothers live show. A large monitor in a separate room will display clips from the relevant visuals showing how the costumes move when worn by a performer and their relationship to the music. Two costumes in the front window of the shop appear as surreal shop dummies. These will be lit in the evenings. Smith & Lyall and Kate Tabor's hope is that the costumes' sense of fun provokes joy for passers by, a surreal intervention transforming Wincanton's high street.

The creative process of making the costumes begins with Smith & Lyall's hand-drawn sketches and 3d virtual models. The designs are inspired by a diverse range of influences, including the outfits of 1980s club performer Leigh Bowery, 1970s Japanese sci-fi TV programmes, Oskar Schlemmer's designs for Bauhaus Ballet from the 1920s and traditional Kabuki theatre ideas. The initial sketched visuals are shared and refined with Kate Tabor to discover which materials to use and how to make them workable for the performers to move in. Following this, Kate and her team handmake and craft each piece. This juxtaposition of mixing computer design, handmade costumes and performers creates a unique look.

14 - 29 October: Commerce House, Market Place, WINCANTON, BA9 9LP. Friday 2 - 7pm, Saturday and Sunday 11am - 5pm. @smithandlyall / @katetabor

Diary Dates



RWA SECRET POSTCARD AUCTION

DEVON OPEN STUDIOS

9 - 24 September

devonopenstudios.co.uk

SOU'-SOU'-WEST LATE SUMMER OPEN

Deadline: Sunday 3 September

sousouwest.co.uk

BATH OPEN ART PRIZE

Deadline: Monday 11 September

bathopenartprize.co.uk

CALNE MUSIC & ARTS FESTIVAL OPEN

Deadline: Thursday 28 September

cmaf.org.uk

SOUTH WEST ACADEMY OPEN

Deadline: Tuesday 3 October

southwestacademy.org.uk

THE SHAFTESBURY OPEN

Deadline: Friday 6 October

shaftesburyartscentre.org.uk

RWA SECRET POSTCARD AUCTION

28 October - 9 November

rwa.org.uk

GALLERY UPSTAIRS OPEN

Deadline: Sunday 15 November

thegalleryupstairs.org.uk

TOTTERDOWN ARTS TRAIL

18 and 19 November

totterdownartstrail.org

DORSET ART WEEKS 2024

25 May - 9 June

dorsetartweeks.co.uk

Spencer Shakespeare

22 Sep - 19 Oct

The Vanner Gallery
45 High Street
Salisbury
01722 501 551
10am - 5pm Tuesday to Saturday
vannergallery.com



Visual Arts

September and October 2023



MARZIA COLONNA 'WINDY DAY'

Marzia Colonna and Fiamma Colonna Montagu: Many Moons

"In a rare and special exhibition, Marzia Colonna and Fiamma Colonna Montagu, mother and daughter, will be exhibiting together at Sladers Yard from 9 September. Marzia's collages centre on the things she loves, the land and sea that surrounds her Dorset home, the places she visits, interiors of her studio, flowers from her garden, her sculpture. All are represented in cut or ripped paper she has painted beforehand with mostly abstract marks and patterns. To her sculptor's sense of form and texture, she adds a powerful sense of colour, bringing together bright and earth colours in deeply satisfying and original combinations. Fiamma is an artist specialising in large-scale ceramic sculpture and site-specific commissions. Her vessels are made using porcelain and stoneware high-fired with cobalt and iron oxides to create subtle natural colours and finishes on strong elemental forms."

9 September - November: Sladers Yard, WEST BAY, Bridport, DT6 4EL. Wednesday - Saturday 10am - 4.30pm. 01308 459511 / sladersyard.co.uk.

SUE DURANT AND LIN HAWKINS: 'THE GARDEN, THE SEA'

Until 2 September

Ilminster Arts Centre, The Meeting House, East Street, ILMINSTER, TA19 0AN. Tuesday - Saturday 9.30am - 3.30pm. themeetinghouse.org.uk.

ALISON BAXTER: 'THE HIDDEN HISTORIES OF WOMEN'

Until 2 September

ACE Arts, Market Place, SOMERTON, TA11 7NB. Tuesday - Saturday 10am - 5pm. acearts.co.uk.

JENNI DUTTON: 'THE DEMENTIA DARNINGS'

Until 2 September

ACE Arts, Market Place, SOMERTON, TA11 7NB. Tuesday - Saturday 10am - 5pm. acearts.co.uk. "Large scale portraits of the artist's mother in wool and thread."

ROBERT HEWER

Until 2 September

Artwave West, MORCOMBELAKE, DT6 6DY. Wednesday - Saturday 10am - 5pm. artwavewest.com. "Striking paintings."

CATHY VEALE

Until 2 September

Room 14, Sandy Hill Arts, Sandy Hill Lane, CORFE CASTLE, BH20 5JF. 10am - 5pm. cathyveale.co.uk. Paintings and prints.

NYE THOMPSON: 'VERTIGO'

Until 3 September

East Quay, WATCHET, TA23 0AQ. Tuesday - Sunday 10am - 6pm. eastquaywatchet.co.uk. "Nye Thompson will open our eyes to the world of surveillance, satellites, and the new frontier - space."

'FLOW'

Until 3 September

Somerset Rural Life Museum, Chilkwell Street, GLASTONBURY, BA6 8DB. Tuesday - Saturday 10am - 5pm. £8.50 / £4.50. 01458 831197 / srlm.org.uk. Embroidery, painting, printmaking and sculpture by Sara Dudman, Jane Hood, Julia Manning, Jane Mowat, and Judy Willoughby.

SHERBORNE TIMES

A MONTHLY CELEBRATION OF PEOPLE, PLACE AND PURVEYOR

OUT NOW
AND ONLINE

sherbornetimes.co.uk



Artist at Work No.57
Bronwen Coe, *Resplendent Lime*

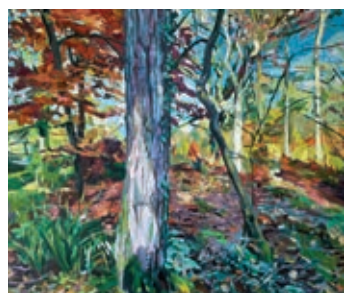
Visual Arts

'THREE PAIRS OF HANDS'

Until 3 September

Eype Centre for The Arts, Mount Lane, EYPE, Bridport, DT6 6AR. 10am - 4.30pm.

jennyvp58.wixsite.com. "Relief sculpted landscapes, drawings, textiles and ceramics by Jenny Penney, Sarah Bramwell, and Diana Parker."



ANDY ROLLO: 'COVER'

Until 3 September

Sou'-Sou'-West Arts Gallery, Symonds Estate, BRIDPORT, DT6 6HG. 10.30am - 4.30pm. 01308 301326 / sousouwest.co.uk.

Above: 'Nothing Can Stand Alone / Autumn Woodland V'

'VIEWPOINTS'

Until 5 September

The Gallery, Shaftesbury Arts Centre, Bell Street, SHAFTESBURY, SP7 8AR. Monday - Saturday 10am - 4pm. 01747 855243 / shaftesburyartscentre.org.uk.

"Paintings and prints by Rob Adams, Orsola Adlem, and Sue Fawthrop."

SUMMER EXHIBITION

Until 9 September

Gallery On The Square, Queen Mother Square, DORCHESTER, DT1 3BL. Monday - Saturday 9.30am - 5pm, Sunday 11am - 4pm. 01305 213322 / gallerypoundbury.co.uk.

'LANDFORM'

Until 10 September

White Chalk Gallery Fine Art, 5 Old Swan Yard, DEVIZES, SN10 1AT. 10am - 5pm.

whitechalkgallery.co.uk. "Expressive paintings and drawings by Laura Barnard and hand-built ceramic vessels by Cheryl Cork, inspired by the local landscape."



'SWALLOWING THE MOON'

Shirley Cousins: Swallowing the Moon

"A tribute to an extraordinary artist who used paint, print, glass, metal and more to explore the ideas which obsessed her."

Until 23 September: The Slade Centre, The Square, GILLINGHAM, SP8 4AY. Tuesday - Friday 9am - 4pm, Saturday 9am - 2pm. 07775 431652 / thesladecentre.com.

FLO BROOKS: 'HARMONYCRUMB'

Until 10 September

Spike Island, BRISTOL, BS1 6UX. 12noon - 5pm. 0117 929 2266 / spikeisland.org.uk. "Exhibition exploring trans and gender-nonconforming histories through paintings and three-dimensional assemblages."

'MAKING THE CITY HOME'

Until 10 September

Royal West of England Academy, Queen's Road, Clifton, BRISTOL, BS8 1PX. Tuesday - Sunday 10am - 5pm. 0117 973 5129 / rwa.org.uk. "Exhibition of textiles by women from Somalia, Sudan, Syria, Pakistan, India and other countries, working together to create beautiful textiles that describe how they journey through the city and which places and things are important to them."

CLAIRE THOMAS: 'WHAT CONDITION?'

Until 10 September

Walford Mill, Knobcrook Road, WIMBORNE, BH21 1NL. Wednesday - Saturday 10am - 5pm, Sunday 11am - 4pm. 01202 841400 / walfordmillcrafts.co.uk. "Local landscapes in watercolour and oils."

AGA KUBISH: 'BEHIND THE LEAVES'

Until 11 September

Heart of The Tribe Gallery, 74 High Street, GLASTONBURY, BA6 9DZ. Thursday - Monday 11am - 5pm. 01458 832167 / heartofthetribe.com.

SOUTH WEST SCULPTORS: 'FORMS TO INSPIRE'

Until 24 September

Bishop's Palace Gardens, WELLS, BA5 2PD. 9.30am - 5.30pm. £16 / £8. 01749 988111 / swsculptors.co.uk / bishopspalace.org.uk. "Eleven makers in prized historic gardens."

'LITTLE AND LARGE'

Until 28 September

Gallery 2, Purbeck New Wave Gallery, 43a High Street, SWANAGE, BH19 2LT. Monday - Saturday 10am - 5pm, Sunday 10am - 4pm. 07434 814384 / purbecknewwave.co.uk. "A juxtaposition of works over 1 metre with miniatures."



MANY MOONS
Marzia Colonna MRBS collage
Fiamma Colonna Montagu
ceramic sculpture
Petter Southall furniture
9 September - 11 November
Lunch at CAFÉ SLADERS

SLADERS YARD

Contemporary Art & Craft Gallery West Bay DT6 4EL
Open Wednesday - Saturday 10am - 4.30pm
CAFÉ SLADERS also open Sunday 10am-3.30pm
@sladersyard sladersyard.co.uk t:01308459511



Left: Marzia Colonna Sunflowers by the Sea 100cm sq collage; Fiamma Colonna Montagu Life's Circle 57x60cm ceramic on metal base



TIINA TÖRMÄNEN

Wildlife Photographer of the Year

"Wildlife Photographer of the Year is the most prestigious photography event of its kind, providing a global platform that showcases some of the best talent from around the world. These exceptional images capture fascinating animal behaviour, spectacular species, and the breathtaking diversity of the natural world. Using the unique and emotive power of photography to engage and inspire audiences, the photographs shine a light on stories and species around the world and encourage a future of advocating for the planet. Launched back in 1965, today the competition receives entries from more than 90 countries, highlighting its enduring appeal and global reach. As well as showcasing the fantastic photographs, Dorset Museum has created an exciting events programme featuring family activities, talks and a photography workshop for adults.

Until 29 October: Dorset Museum, High West Street, DORCHESTER, DT1 1XA. Monday - Saturday 9am - 4.30pm, Sunday and Bank Holidays 10am - 4pm. £14 / £12.60 / £11 / £9.90. 01305 262735 / dorsetmuseum.org.

'WHAT IS BEAUTIFUL?'

Until 30 September

Bridport Arts Centre, 9 South Street, BRIDPORT, DT6 3NR. Tuesday - Saturday 10am - 4pm. 01308 424901 / bridport-arts.com. "Community-based visual arts project featuring workshops and a mini-exhibition."

'WATER AND SKY'

Until 1 October

Rotunda Gallery, Lyme Regis Museum, Bridge Street, LYME REGIS, DT7 3QA. Monday - Sunday 10am - 4pm. £5.95. 01297 443370 / lymeregismuseum.co.uk. "Skies and water are explored in the works of West Country artists Mary Noon and Vivienne Littley."

'PAINTED LOVE'

Until 1 October

The Holburne Museum, BATH, BA2 4DB. Monday - Saturday 10am - 5pm, Sunday and Bank Holidays 11am - 5pm. £11 / £5.50. 01225 388569 / holburne.org. "Lavish exhibition exploring the role of portraiture in the process of marriage in Renaissance Europe."

PAM PHILIP

Until 1 October

Duchess of Cornwall Inn, Queen Mother Square, POUNDBURY, Dorchester, DT1 3DD. 10am - 10pm. artinpoundbury.co.uk. Paintings.

'IN HER OWN VOICE: THE ART OF LUCY KEMP-WELCH'

Until 1 October

Russell-Cotes Art Gallery and Museum, East Cliff Promenade, BOURNEMOUTH, BH1 3AA. Tuesday - Sunday 10am - 5pm. 01202 127249.

KAFFE FASSETT

Until 1 October

Victoria Art Gallery, Bridge Street, BATH, BA2 4AT. Tuesday - Sunday 10.30am - 4.30pm. £7 / £6.50 / £2.50. victoriagal.org.uk. "New quilts."



'THREADS: BREATHING STORIES INTO MATERIALS'

Until 1 October

Arnolfini, 16 Narrow Quay, BRISTOL, BS1 4QA. Tuesday - Sunday 11am - 6pm. 0117 917 2300 / arnolfini.org.uk. "Major exhibition featuring 21 contemporary international artists and makers, co-curated by Arnolfini and renowned textiles artist Alice Kettle."

Above: Olga de Amaral 'Viento 2'

CANDACE BAHOUTH: 'ENCHANTED VISIONS'

Until 1 October

Victoria Art Gallery, Bridge Street, BATH, BA2 4AT. Tuesday - Sunday 10.30am - 4.30pm. £7 / £6.50 / £2.50. 01225 477233 / victoriagal.org.uk.

JOHN ANDREW: 'A LIFE IN LETTERS'

Until 15 October

Red House Museum and Gardens, Quay Road, CHRISTCHURCH, BH23 1BU. Tuesday - Saturday 10am - 4pm, Sunday and Bank Holiday Monday 12noon - 4pm. 01202 482860 / hampshireculture.org.uk.

Country and Coast: New landscape paintings by Colin Willey



16 September to 21 October

GALLERY ON THE SQUARE

Queen Mother Square, Poundbury, Dorchester DT1 3BL

Mon-Sat, 9.30am to 5pm; Sundays: 10am to 4pm

01305 213322

www.gallerypoundbury.co.uk

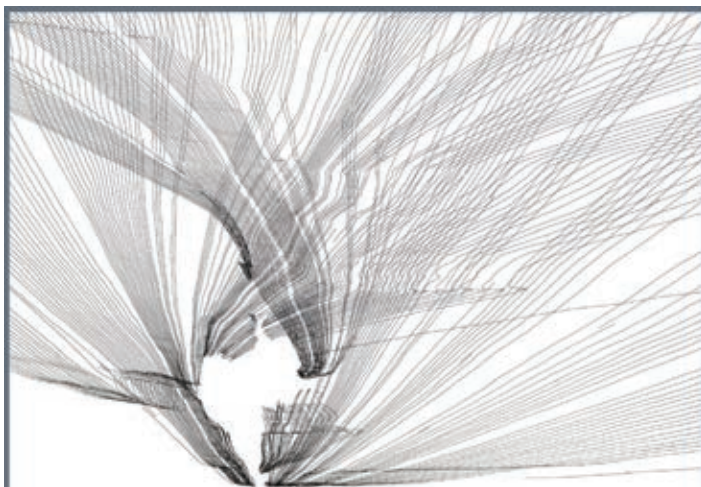


COMMON THREAD
16.09.2023-01.01.2024
Lyn Barlow & Grayson Perry

@eastquaywatchet
eastquaywatchet.co.uk
Open daily 10am-5pm

Contains Art CIO, Charity Number: 1193931,
Image credit: Jesse Roth

**EAST
QUAY**



Parallels

An exhibition of
sculpture and drawings
by Simon Hitchens

Open 16 September to 2 December
Somerset Rural Life Museum

See website for opening times and admission
SRLM.ORG.UK GLASTONBURY BA6 8DB



CLOSE



Sou'-Sou'-West

Connections
Group 7
30 Sep-22 Oct

09 - 24 Sep
Late Summer Open
Call for entries

30 Sep - 22 Oct
Connections
Group 7

28 Oct - 26 Nov
Winter Open
(Call for entries)

01 - 03 Dec
Sousouwest Art Fair
(Call for entries)

09 Dec - 07 Jan 24
Friends Open

In The Shop

12 Aug - 20 Aug
Threads of Tradition
Japanese Fashion
Textiles

04 - 26 Sep
Dorset Paintings
Nicky Morean

30 Sep - 22 Oct
Smalls for Walls
Open



Supported using public funding by
**ARTS COUNCIL
ENGLAND**



Gallery & Shop

Daily: 10:30 - 16:30

Manor Yard, Symondsbur Estate,
Bridport, DT6 6HG

@sousouwestgallery

sousouwest.co.uk



Subscribe to
EVOLVER MAGAZINE
online at
evolver.org.uk

Six bi-monthly issues for £25



Templecombe Art Exhibition



Saturday 7th and Sunday 8th October
Templecombe Village Hall
10am to 5pm

Free Admission | Local Artists | Refreshments

In aid of Motor Neurone Disease

For further details contact Alison on 01963 370866

Kindly sponsored by



EVOLVER MAGAZINE

DEADLINE FOR NEXT ISSUE
November and December 2023
SATURDAY 7 OCTOBER

Shaftesbury Arts Centre Galleries



25 October - 7 November

11 - 13 Bell Street Shaftesbury SP7 8AR

Visual Arts



Spencer Shakespeare: Weeping Willow

"Renowned British painter Spencer Shakespeare's abstract canvases show the blurred boundaries of the humming world he sees: a door for you, the viewer, that opens into wonderland."

22 September - 19 October: The Vanner Gallery, 45 High Street, SALISBURY, SP1 2PB. Tuesday - Saturday 10am - 5pm. 01722 501551 / vannergallery.com.

'WESSEX AIRSCAPES: ELEVATING WILTSHIRE'

Until 15 October

Wiltshire Museum, 41 Long Street, DEVIZES, SN10 1NS. Monday - Saturday 10am - 5pm, Sunday 11am - 3pm. £7.50. 01380 727369 / wiltshiremuseum.org.uk. "Aerial photographer Hedley Thorne and landscape painter Anna Dillon offer a complementary and contemporary take on the landscape of Wessex."

MICHAEL SIMPSON: 'DRAWING TOWARDS PAINTING'

Until 17 October

The Holburne Museum, BATH, BA2 4DB. Monday - Saturday 10am - 5pm, Sunday and Bank Holidays 11am - 5pm. £11 / £5.50. 01225 388569 / holburne.org. "Works on paper, exploring the artist's approach to drawing as a route to what a painting might be."

AXEL SCHEFFLER: 'A LIFE IN ILLUSTRATION'

Until 28 October

Museum of Somerset, Castle Lodge, Castle Green, TAUNTON, TA1 4AA. Wednesday - Saturday 10am - 5pm. swheritage.org.uk. "An exhibition of work by Axel Scheffler, the UK's number one bestselling illustrator and the creative force behind some of the most instantly recognisable characters in children's books, from The Gruffalo to Stick Man and beyond."

'STITCHING TOGETHER'

Until 29 October

Arnolfini, 16 Narrow Quay, BRISTOL, BS1 4QA. Tuesday - Sunday 11am - 6pm. 0117 917 2300 / arnolfini.org.uk. "Exhibition created by Bridges for Communities and Arnolfini to celebrate a unique partnership that has developed over the last three years."



For Sale: The Creative Gallery - £250,000

This is a rare opportunity to purchase a freehold shop in the centre of Wareham. There is a large display area as you enter with the south facing windows flooding the room with natural light. To the rear is a further shop area with access to the outside. Upstairs is a large workroom / office, this has been let out separately in the past and has plenty of potential to be further utilised.



For further information please contact Albury & Hall on 01929 666000 / wareham@alburyandhall.co.uk

Visual Arts

'INTO THE WILD'

Until 31 October

Compton Acres Gardens, 164 Canford Cliffs Road, POOLE, BH13 7ES. 10am - 5pm. £9.95 / £8.95 / £4.95. comptonacres.co.uk. "Immerse yourself in the world of art and wildlife as you encounter exotic animals and native wildlife sculptures by renowned artists including Tanya Russell, Suzie Marsh, Elliott of London, Marjan Wouda, Ama Menec, and Brendon Murless."



JAZMIN VELASCO-MOORE

Until 31 October

Damers Corridor, North Wing Level 1, Dorset County Hospital, Williams Avenue, DORCHESTER, DT1 2JY. 8am - 8pm. 01305 253424. "This retrospective is a vibrant selection of work from an enormously talented printmaker. Jazmin's original, thoughtful, and often humorous prints are sure to raise a smile."

LUCIE RIE: 'THE ADVENTURES OF POTTERY'

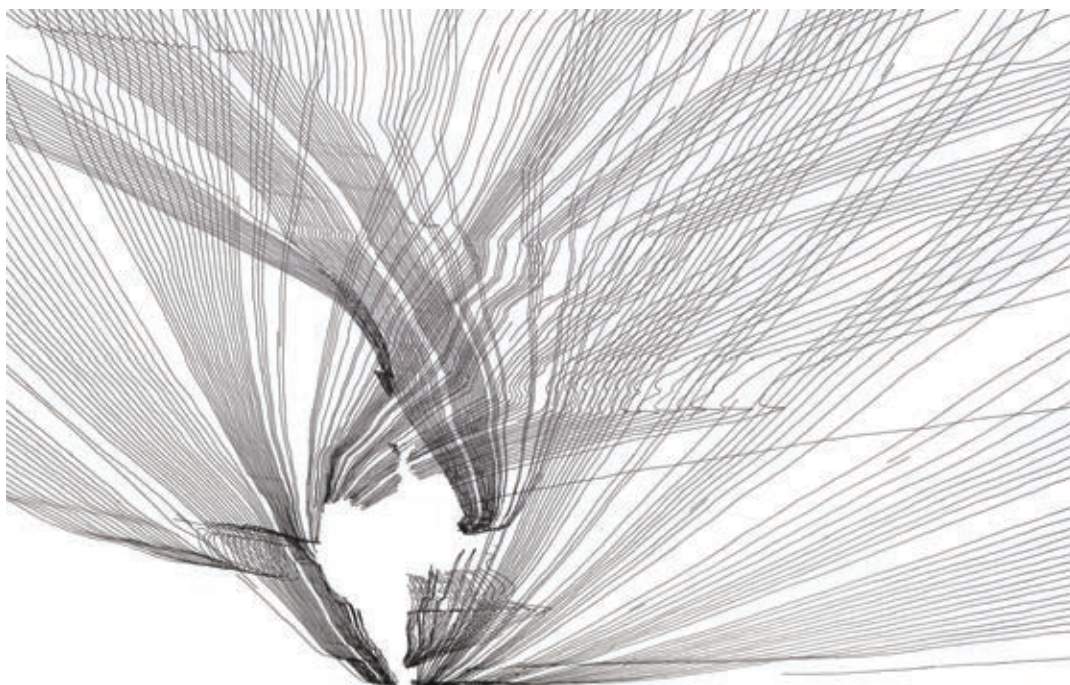
Until 7 January

Holburne Museum, Great Pulteney Street, BATH, BA2 4DB. Monday - Saturday 10am - 5pm, Sunday 11am - 5pm. £11 / £5.50. holburne.org. "This major exhibition celebrates Lucie Rie (1902 - 1995), one of the most accomplished and influential potters of the twentieth century."

MIKE TOPHAM

1 - 30 September

The Creative Gallery, St John's Hill, WAREHAM, BH20 4NB. Monday - Sunday 10am - 5pm. 01929 551505. "Inventive wire pictures and fantastical masks."



DURATIONAL DAY DRAWING

Simon Hitchens: Parallels

"Somerset-based sculptor Simon Hitchens explores time and transience - the interconnected nature of what we share with the world. For three weeks, spanning the autumn equinox of 2019, Simon travelled the length of the British Isles, from latitude 50 in Cornwall to latitude 60 in Shetland. He was looking for rocks from eleven different geological time periods and to make drawings of the shadow lines cast by each rock at each of the eleven lines of latitude. Shadows cast from a twelfth object, a discarded lump of plastic, were drawn on a landfill site near London. Shadow sculptures complement the drawings. There will also be a large concrete sculpture, *Bearing Witness to Things Unseen*, on display in the museum's Abbey Barn."

16 September - 2 December: Somerset Rural Life Museum, Chilwell Street, GLASTONBURY, BA6 8DB. Tuesday - Sunday 10am - 5pm. £8.50 / £6.95. 01458 831197 / srlm.org.uk.

'THE DREAMING LENS'

1 September - 17 October

Mowlem Theatre, Shore Road, SWANAGE, BH19 1DD. Monday, Wednesday, Friday and Saturday 11am - 1.30pm, Monday - Saturday 6 - 10.30pm. themowlem.com. Photographs by Paul Jefferis.

'CHANGING COLOURS'

1 September - 31 October

Studio 3 Gallery, Moor Lane, Clevedon Craft Centre, CLEVEDON, BS21 6TD. 10am - 4pm. studiothree.art.

THG OPEN 2023

2 September - 28 October

Thelma Hulbert Gallery, Dowell Street, HONITON, EX14 1LX. Tuesday - Saturday 10am - 5pm. 01404 45006 / thelmahulbert.com.

MICHAEL CROWTHER AND DAVE KING: 'CONTEMPORARIES'

3 September - 15 October

The Shippon Gallery, Hook Farm, CHARDSTOCK, Axminster, EX13 7DD. Friday - Sunday 11am - 4pm. 01460 220021 / theshippongallery.com.

NICKY MOREAN: 'DORSET PAINTINGS'

4 - 26 September

Sou'-Sou'-West Arts Gallery, Symondsbur Estate, BRIDPORT, DT6 6HG. 10.30am - 4.30pm. 01308 301326 / sousouwest.co.uk.

'SEW TOGETHER'

5 - 9 September

Wells and Mendip Museum, 8 Cathedral Close, WELLS, BA5 2UE. Tuesday - Saturday 10am - 4pm. Free entry. 01761 241539. "Textile art in a variety of media."



Boilerhouse Gallery

CONTEMPORARY ART AND CRAFT
IN A WONDERFUL LOCATION

Tuesday to Sunday 10am - 5pm

ARTY BAZAAR

Saturday 16th September • 12noon - 4pm

Sandy Hill Lane, Corfe Castle BH20 5JF
07398 052489 • boilerhousegallery.co.uk

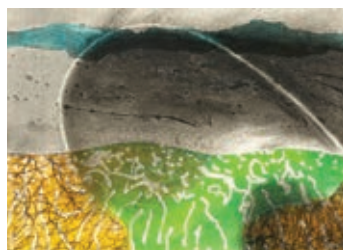


Visual Arts

'ARTBEAT'

5 - 14 September

Kennaway House
Venue Address: Coburg Road,
SIDMOUTH, EX10 8NG. 10am - 5pm.
kennawayhouse.org.uk. "Eleventh
annual exhibition for this popular
group of ten East Devon artists. An
exciting and varied show with
affordable, original art, prints,
cards and gifts."



BONNIE BROWN: 'LINEAR'

5 - 20 September

Fine Foundation Gallery, Durlston
Castle, Lighthouse Road,
SWANAGE, BH19 2JL. 01929 424443.
10.30am - 5pm. durlston.co.uk /
bonniebrown.co.uk. "Works on
paper in response to running in the
Purbeck landscape, exploring light
and water, their qualities of
transience and transformation and
the boundary between land, sea,
air, the static and the moving."

THE TEXTILE SET: 'EAST'

5 - 30 September

Ilminster Arts Centre, The Meeting
House, East Street, ILMINSTER, TA19
0AN. Tuesday - Saturday 9.30am -
3.30pm. 01460 54973 /
themeetinghouse.org.uk. "This new
exhibition of textile art reflects the
experiences of travel as well as
what has sparked the imagination
from different cultures and art
forms."

JOANNA COMMINGS: 'ASPECTS OF WATER'

5 - 30 September

Ilminster Arts Centre, The Meeting
House, East Street, ILMINSTER, TA19
0AN. Tuesday - Saturday 9.30am -
3.30pm. 01460 54973 /
themeetinghouse.org.uk. "Abstract
impressionist paintings featuring
the natural world at all times of the
year."



Myrna Quinonez: The Picturesque

"Quinonez's work explores repetitive patterns in nature and the impact that new media, screens and technology have on us, influencing the way we perceive the world."

1 - 29 September: Pound Arts, Pound Pill, CORSHAM, SN13 9HX.
Monday - Saturday 10am - 9.30pm. 01249 701628 /
poundarts.org.uk.

CATHY MONTAGUE

6 - 12 September

The Gallery, Shaftesbury Arts
Centre, Bell Street, SHAFTESBURY,
SP7 8AR. Monday - Saturday 10am -
4pm. 01747 855243 /
shaftesburyartscentre.org.uk. "A
bold exhibition of mainly abstract
paintings."

MARTIN GOOLD

6 September - 27 October

Artwave West, MORCOMBELAKE,
DT6 6DY. Wednesday - Saturday
10am - 5pm. artwavewest.com.
"Martin's recent work features a
heightened sensation of nocturnal
atmosphere and mysterious
quality of moonlight."



'AUTUMN EXHIBITION'

8 September - 5 January

Tincton Gallery, The Old School
House, TINCLETON, near
Dorchester, DT2 8QR. Friday -
Monday 10am - 4pm. 01305 848909
/ tinctongallery.com. "Mixed
exhibition featuring work by gallery
and guest artists."

Above: Mary Gillett 'Every Day's
Journey'

SUSAN CLARKE: OPEN STUDIO

9 and 10 September

195 St Andrews Road, BRIDPORT,
DT6 3BT. 2 - 5pm. 0776 520 2421.



BLACKMORE VALE ART TRAIL

9 - 17 September

Various locations in and around
SHAFTESBURY. 11am - 4pm. 01747
853822. "26 artists across a good
range of disciplines from painting
to jewellery are opening their
studios or have found suitable
venues to show their work. By
keeping the geographical area
within approximately 10 miles of
Shaftesbury, visitors might be able
to visit every venue within two days,
while exploring the beautiful North
Dorset countryside and the charms
of the hilltop town of Shaftesbury."

Above: Kim Pragnell



THE CREATIVE GALLERY

Showcasing ceramics, paintings, textiles, jewellery and glass by local artists



Mike Topham
Wire pictures
& masks
1st-30th September



Elaine King
Decorated
earthenware pottery
1st-31st October

St John's Hill, Wareham, Dorset BH20 4NB t 01929 551505 e creativegallery@hotmail.co.uk
Open daily 10am-5pm until 30th September, then Monday-Saturday 10am-5pm

The Peacock Arts Trail 7 - 15 October 2023



Celebrating the Arts in North-West Wiltshire

The colourful Peacock Arts trail is celebrating ten years of fabulous FREE open studios and exhibitions, and 2023's vibrant mix is a vintage year!

- *Sculptures
- *Textiles
- *Photography
- *Paintings
- *Ceramics
- *Furniture
- *Printmaking
- *Jewellery



The Peacock's rainbow covers Corsham, Box, Chippenham, Melksham and villages. Get off the beaten track and discover some truly unique locations and friendly artists.

Pick up your free guide in local shops and galleries

www.peacockartstrail.co.uk

Images from left: Annie Mulholland, Little Spear Fine Art



SWAC

South West Academy Open Exhibition 2023

CALL FOR ENTRIES: 2D AND 3D ARTISTS

Exhibition dates: 31 October - 11 November
at Kennaway House, Sidmouth

Entry Deadline: 3 October 2023

Enter online via southwestacademy.org.uk

Artwork images from Open Exhibition 2022

Bright Corners

Psychotherapy and coaching for artists

Dynamic conversation for creative growth

Fiona Godfrey
BED MA BACP Accredited

Bridport and online
www.fionagodfreyart.com
07889 666159



'Linear'

Works on paper by Bonnie Brown
5 - 20 September 2023

Fine Foundation Gallery, Durlston Castle
Lighthouse Road, Swanage, Dorset BH19 2JL
10.30am - 5pm

Free entry. No booking required
01929 424443
durlston.co.uk/bonniebrown.co.uk

BV Art Trail

Shaftesbury and surrounding villages



9th September - 17th September 2023

Open Studios and Small Galleries

look out for brochures in shops, pubs, cafes and TICs

Insta and Fb [blackmorevalearttrail](https://www.facebook.com/blackmorevalearttrail)

cover image: Ceramics by Rachel Piment

Dorset
Museum
dorsetmuseum.org

DORSET MUSEUM | DORCHESTER
21 July - 29 October 2023



WILDLIFE
PHOTOGRAPHER
OF THE YEAR

NATURAL
HISTORY
MUSEUM



ANYA BEAUMONT

The Peacock Arts Trail

"North Wiltshire's open studios event is celebrating ten years of showcasing local artists and makers. The event is based in Corsham, and reaches out to Chippenham, Box, Melksham, Holt, Atworth, Kington Langley and many other villages. It's a great way to get 'off the beaten track' and discover some truly unique locations. From sculptors, textile artists and painters to photographers, jewellery makers and carpenters, there's something for everyone."

7 - 15 October: Locations in and around CORSHAM, Wiltshire. peacockartstrail.co.uk.

10 PARISHES FESTIVAL

9 - 17 September

Various locations in and around WIVELISCOMBE. 01984 624564 / 10parishesfestival.org.uk. "Arts festival, featuring over 50 artists and performers."

'EBB AND FLOW'

9 - 24 September

Seaglass Gallery, 6 Brookfield Cottages, LYMPSTONE, EX8 5ES. Thursday - Sunday 10am - 4pm. seaglassgallery.co.uk. "Inspired by the Exe estuary, Charlotte Ellis and Claire Belcher cross the land-water divide with paintings, lino prints and pyrography."

'LATE SUMMER OPEN'

9 - 24 September

Sou'-Sou'-West Arts Gallery, Symonds Estate, BRIDPORT, DT6 6HG. 10.30am - 4.30pm. 01308 301326 / sossouwest.co.uk.

'LAND AND SEA'

9 - 30 September

Gallery 4, Salisbury Library, SALISBURY, SP1 1BL. 9am - 5pm. 07515 482406.

'MOMENTUM: MEMORIES, JOURNEYS and TIMES'

9 September - 7 October

ACE Arts, Market Place, SOMERTON, TA11 7NB. Tuesday - Saturday 10am - 5pm. acearts.co.uk.

2023 ACADEMICIAN CANDIDATES

9 September - 29 October

Kenny Gallery, Royal West of England Academy, Clifton, BRISTOL, BS8 1PX. Tuesday - Sunday 10am - 5pm. rwa.org.uk.

RWA 170 ANNUAL OPEN

9 September - 14 January

Main Gallery, Royal West of England Academy, Clifton, BRISTOL, BS8 1PX. Tuesday - Sunday 10am - 5pm. £8.90. 0117 973 5129 / rwa.org.uk. "Dynamic and varied exhibition showcasing work in all mediums by some of today's most exciting artists, amateur and professional alike."

'CAPE FAREWELL: ART & CLIMATE CHANGE'

11 September - 11 October

Atkinson Gallery, Millfield School, Butleigh Road, STREET, BA16 0YD. Monday - Thursday 9.30am - 5pm. 01458 444322 / millfieldschool.com.

"Derived from Cape Farewell's archive, this exhibition brings together a collection of works from renowned artists, reflecting on their expedition in the Arctic and highlighting the impact of climate change."

WELLS PAINTING GROUP

12 - 23 September

Wells and Mendip Museum, 8 Cathedral Close, WELLS, BA5 2UE. Tuesday - Saturday 10am - 4pm. Free entry. 07968 050526.

LAURENCE POLLARD: 'FROM DORSET TO PROVENCE'

12 September - 3 October

The Gallery, Shaftesbury Arts Centre, Bell Street, SHAFTESBURY, SP7 8AR. Monday - Saturday 10am - 4pm. shaftesburyartscentre.org.uk.

'LINE, FORM AND COLOUR'

13 - 26 September

The Gallery, Shaftesbury Arts Centre, Bell Street, SHAFTESBURY, SP7 8AR. Monday - Saturday 10am - 4pm. shaftesburyartscentre.org.uk. Paintings, photographs and ceramics by Eric Bailey, Tim Edwards, Heather Stone and Jane Barnard.

'THREADS OF TIME'

13 September - 1 October

Walford Mill, Knobcrook Road, WIMBORNE, BH21 1NL. Wednesday - Saturday 10am - 5pm, Sunday 11am - 4pm. 01202 841400 / walfordmillcrafts.co.uk. "A textile exhibition by Debby Kirby, showcasing collaborative work with invited artists, photographers and makers."

'PROMENADE WEEKENDER'

15 - 17 September

Maderia Cove, Marine Lake, WESTON-SUPER-MARE, BS23 2BE. Friday 7 - 10pm, Saturday 11am - 5pm, Sunday 11am - 5pm. promenadeprojects.org.uk. "Location-specific artworks, activities, events, and happenings."

Undertow

Exhibition by Pauline Scott-Garrett

16 Sept - 5 Nov 2023

The Whittox Gallery
Whittox Lane, RISE
Frome BA11 3BY

risefrome.com

RISE

THE WHITTOX GALLERY

Supported using public funding by
ARTS COUNCIL ENGLAND

LOTTERY FUNDED

STUDIO SHARE BRIDPORT

With creatives Paul Blow & Suzanna Hubbard

£175 per month.
Includes fast broadband, all heating and electricity, communal kitchen and car parking.

PLEASE EMAIL: paul@paulblow.com
for more info and/or to arrange a viewing.

SOMERSET OPEN STUDIOS 2023

EVOLVER MAGAZINE PULL-OUT SUPPLEMENT

JILL DAVIES (VENUE 67)





Somerset
**Art
Weeks**

Gael Sellwood

Botanical, landscapes and
natural history paintings in
watercolour and acrylic
etchings, prints, cards, book

16 Sept - 1 Oct 2023

10 - 5 daily (closed Mon and Tues)

Open Studio

Higher Farmhouse
Woolston
North Cadbury
Somerset
BA22 7BL

gaelsellwood.co.uk



The Alleyway, Tunisia - watercolour 42 x 59 cm

LUCY WILLIS RWA

Open Studio Exhibition

16th September - 1st October

Venue 106

MOORLAND HOUSE, BURROWBRIDGE,
SOMERSET TA7 0RG

Open 2 - 5pm daily
except Tuesdays and Thursdays

T: 01823 698200

E: lucyawillis@btinternet.com

lucyawillis.com



'Hollowmarsh Puddle' (Photogravure etching on Fabriano paper)

Venue 5

Sally Wetherall

My work uses ceramic, print and photographic practice to
record, gather and decipher the processes that form
landscape. Attempting to make visible, through material
process, the dense accumulation of time, repetition,
erasure, erosion, memory and light through which this
landscape was formed and is experienced.

Manor Farmhouse, Litton, BA3 4PW

Open every day 10am - 5pm

07974 964605

sallywetherall.com



Venue 9

Christine-Ann Richards & Lutz Krainhoefner

Porcelain, garden ceramics, burnished smoke fired pottery, stone
Methodist Chapel, High Street, Wanstrow, near Frome, BA4 4TB

07740 093001

Open 11am - 5pm • Closed Tuesday and Wednesday



VENUE 87

Annie Musgrove

Meadow Farm, Greenham, Wellington, TA21 0JW

Open Friday, Saturday and Sunday, 10am - 5pm

07530 310795 / anniemusgrove.co.uk

Somerset Open Studios 2023



LEO DAVEY (VENUE 66)

Somerset artists are making final preparations for this autumn's Somerset Open Studios event, with a flurry of activity in creative spaces across the county. This autumn will see the first full Open Studios event since 2018, with over 300 artists taking part - as many as ever!

Discovering what goes on in artists' studios can often be enlightening, surprising and thrilling, a revelation of the magic behind the process and the chance to meet the artist or maker. For both artists and visitors, it's a chance to forge an enduring relationship and a unique opportunity to find out what lies behind the intrigue of an image or hand crafted object. It's also an opportunity for the casual viewer, the curious, to see what goes on behind normally closed studio

doors. Artists value the engagement that the event provides, a chance comment or connection can provide invaluable encouragement.

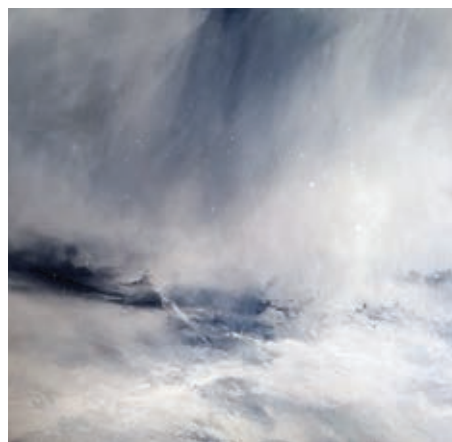
This year's Guide cover artist, printmaker Julian Manning has taken part since the very first event in 1994: "Somerset Open Studios means endless chat, people from

the past, meeting old friends, locals who have no idea of what goes on behind our garden gate and buyers who have made the effort to come from far away. A happy, exhausting time!"

The much-loved Somerset Open Studios Guide returns again, and is available in cultural centres, libraries and tourist information points across Somerset and beyond.

Full details are also available on the Somerset Open Studios App, available to download for iPhone and Android, as well as the Open Studios page on the SAW website, with a full event calendar.

SOMERSET OPEN STUDIOS 2023
16 September - 1 October
somerstartworks.org.uk



VENUE 1

David A Parfitt

RI

Janette Kerr

RWA RSAhon

Encounters with land and sea.
Searching out our place in the world,
following trails and hunches, sometimes
lost but always on the way.

**Church Hall Studios, Church Street,
Coleford, Radstock, BA3 5NG**

Open Friday - Sunday 11am - 5pm
07946 777631

janettekerr.co.uk · davidaparfitttri.co.uk



Somerset Open Studios 2023



GAEL SELLWOOD (VENUE 148)



GEORGINA KING (VENUE 67)



LUCY WILLIS (VENUE 106)



LOTTE SCOTT (VENUE 149)



SANDRA MEECH (VENUE 142)



© Joy Merron

seam collective

A Visible THREAD

16 Sept — 29 Oct '23

LOTTERY FUNDED

Supported using public funding by
ARTS COUNCIL ENGLAND

BLACKSWANROUNDTOWER

LAND, LOSS AND WOMB

Summer Auty in association with 'Somerset Art Works'
& 'Somerset Open Studios'

16 Sept — 1 Oct '23

Reconnet | Tilly Rae

14 Oct — 29 Oct '23

galleries | studios | shop | cafe
2 Bridge Street, Frome BA11 1BB



BLACKSWANARTS

01373 473980 | www.blackswanarts.org.uk
FREE ENTRY Registered Charity No. 292463



TWO PAINTERS

David Cuthbert

'CONEY ISLAND' AND OTHER PAINTINGS

Ros Cuthbert RWA

'PLACES AND SPACES'

16th - 23rd September

10.30am - 4pm • Closed Sunday and Monday

LOFT SPACE

Heritage Courtyard Studios, 6 Heritage Courtyard
off Sadler Street, Wells, BA5 2RR

roscuthbert.com • davidcuthbertfineart.uk



'Protection' (detail)



VENUE 143

**Janet
Murphy**

ACE ARTS
Market Place
Somerton
TA11 7NB

Tuesday - Saturday
10am - 5pm

janetmurphyphotography.com

Heart of the Tribe Gallery
and Zig Zag Building
present:

**NOTHING
IS WHAT
IT SEEMS
TO BE**

A site-specific live
performance by
Melanie Thompson and
Grace Surman

A homage to the Zig Zag
Building and Francesca
Woodman

22nd, 23rd and 24th
September 2023
6 - 7pm

ZIG ZAG BUILDING
Morland Road, Northover,
Glastonbury, BA6 9FT



01458 780046
galler@heartofthetribegallery.com



HEART OF
THE TRIBE
GALLERY



Venue 16

Ellen Yeates

PAINTING

*Mainly working with oil paints to highlight the
beauty of nature, particularly often overlooked
hedgerows, wild nature and flowers*

Akasha Studio & Gallery

35 Town Street
Shepton Mallet
BA4 5AQ

10am - 5pm

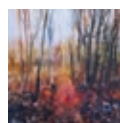
Closed Tuesdays and Wednesdays

07415 743830

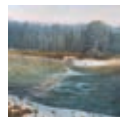
theakashagallery@gmail.com

theakashagallery.com

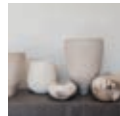
Somerset Open Studios 2023



1. David A Parfitt and Janette Kerr
Church Hall Studios, Church Street,
Coleford, Radstock, BA3 5NG. 07946
777631. [///beside.reports.overtones](#)



2. Andrew Scott George and Val George
Noone Cottage, Springers Hill,
Coleford, BA3 5LN. 07707 712843.
[///developed.ideals.curated](#)



3. Lucy Mortimer
4 Boundary Close, Holcombe, BA3
5FP. 07795 158277.
[///mingles.truffles.longer](#)



4. Rowena Kinsman, Buffy Fletcher, Susanna Hawkins, Linda Sydenham
Haydon, Withybrook, BA3 5JQ.
[///tailoring.severe.otherwise](#)



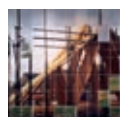
5. Sally Wetherall
Manor Farmhouse, Litton, BA3 4PW.
07974 964605.
[///awestruck.shades.family](#)



6. Philippa Edwards
45 Rackvernal Road, Midsomer
Norton, Radstock, BA3 2UG. 07710
521188. [///lyrics.makeovers.innovate](#)



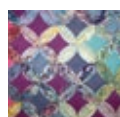
7. Jon Raine, Poppy Raine, Toby Holmes
Unit D4, Southgate, Commerce
Park, Frome, BA11 2RY. 07729 167003.
[///populate.inflame.topics](#)



8. Summer Auty
The Round Tower, Black Swan Arts, 2
Bridge Street, Frome, BA11 1BB. 01373
473980. [///dust.active.scenes](#)



9. Christine-Ann Richards and Lutz Krainhoefner
The Primitive Methodist Chapel,
Wanstrow, BA4 4TB. 07740 093001.
[///rainbow.straws.motorist](#)



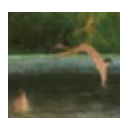
10. Batcombe and Beyond
The Old School House, Back Lane,
Batcombe, BA4 6AE. 01749 850283.
[///statement.shrubbery.cabinet](#)



11. Alison J Gilbert
Unit Holly, Chesterblade Hills,
Winterwell Lane, near Shepton
Mallet, BA4 4QX. 07952 626689.
[///sushi.cools.dripped](#)



12. Fiona Campbell
Laundry Cottage, 13 Cooks Lane,
West Cranmore, Shepton Mallet,
BA4 4RH. 07515 537224.
[///overture.talker.comply](#)



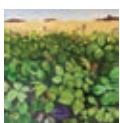
13. Jane Brayne and David Brayne
4 Enfield Terrace, Weymouth Road,
Evercreech, BA4 6JE. 07763 857101.
[///assets.fruitcake.indeed](#)



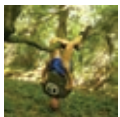
14. Penelope O'Gara
Horsehill Farm, Prestleigh Road,
Evercreech, BA4 6LN. 07815 294233.
[///parsnip.summaries.badminton](#)



15. Madeira-Revell Art
Courtyard Studio, 2 Connock Square,
Shepton Mallet, BA4 4EF. 07825
997678. [///call.mixer.retrieves](#)



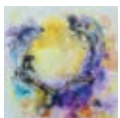
16. Ellen Yeates
Akasha Studio & Gallery, 35 Town
Street, Shepton Mallet, BA4 5AQ.
07964 771456.
[///impresses.poet.stunning](#)



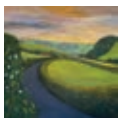
17. Joe Jukes
The Art Bank, 13 High Street,
Shepton Mallet, BA4 5AA.
[///holly.engine.meatball](#)



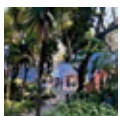
18. Gill Sakakini
Create@#8, 8 Town Street, Shepton
Mallet, BA4 5BG. 07979 158488.
[///surprises.guesswork.deform](#)



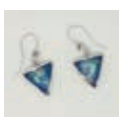
19. Peter Lawrence
Freedom Cottage, Cumhill, Pilton,
BA4 4BG. 07446 198319.
[///entire.nuggets.jousting](#)



20. Angie Rooke
5 Pilton Road, North Wootton,
Shepton Mallet, BA4 4ET. 07572
508778. [///spits.swung.commutes](#)



21. Charlotte Humpston
Orchard Studio, Folly Lodge, North
Wootton, near Shepton Mallet, BA4
4ER. 07976 166454.
[///outdoors.handyman.wire](#)



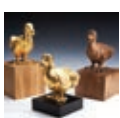
22. Elizabeth Raeburn and Rodney Lawrence
Piltown Chapel, West Pennard,
Glastonbury, BA6 8NQ. 01749 890501.
[///stunt.rejoins.beards](#)



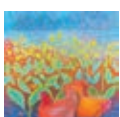
23. Jon Minshall
Heart of The Tribe, 74 High Street,
Glastonbury, BA6 9DZ. 01458
780046.
[///browser.pampering.parked](#)



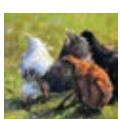
24. Delphi Barney
Dilkara, 26 Ridgeway Gardens,
Glastonbury, BA6 8ER. 07723 366695.
[///bronze.cosmic.plant](#)



25. Charlie Oldham
The Old School, 46 Main Street,
Walton, BA16 9QE. 07896 818631.
[///woodstove.mainland.genetics](#)



26. Feyn Pilkington
Whitley Farm, Whitley Lane, Walton,
BA16 9RW. 07958 634818.
[///hologram.juices.radiated](#)



27. Richard Turner
37 Ashcott Road, Meare, BA6 9SU.
07719 593289.
[///cubs.sleepless.danger](#)



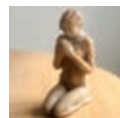
28. Jan Ollis
Dry Close Cottage Studio, Woodford
Lane, Upper Coxley, Wells, BA5 1QS.
07970 853460. [///dress.skin.unlimited](#)



29. Sarah Ball
A2 Gallery, 80 High Street, Wells, BA5
2AJ. 01749 674849.
[///mice.lawns.suspect](#)



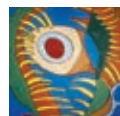
30. Colin Harrow
3 Nettlecombe House, South
Horrington Village, Wells, BA5 3HJ.
01749 679392.
[///victory.innovator.eggshell](#)



31. Jill Dunmore
67 Milton Lane, Wells, BA5 2QT.
07790 422434.
[///fuss.slouched.gloom](#)



32. Heritage Courtyard Gallery and Studios
6 Heritage Courtyard, Sadler Street,
Wells, BA5 2RR. 07974 255016.
[///loafing.resting.built](#)



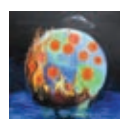
33. The Portway Artists
Portway Annexe, Portway Avenue,
Wells, BA5 2QF. 01749 938309.
[///buddy.inefficient.wiggles](#)



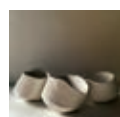
34. Alice Cunningham
12 South Croft, Winscombe, BS25
1JW. 07792 596641.
[///options.vaulting.landlords](#)



35. Anne Carpenter
Baytree House, Turnpike Road,
Shipham, BS25 1TX. 07714 235538.
[///attitudes.ends.letter](#)



36. Chris Holden
Barn House, Garston Lane, Blagdon,
Bristol, BS40 7TG. 01761 462021.
[///giants.glove.hoot](#)



37. Sara Parsons
Chestnut Farm Studio, Kent Street,
Cheddar, BS27 3LG. 07714 347056.
[///offstage.picnic.regaining](#)



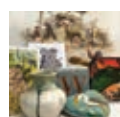
38. Steve Burden
Hill Head Cottage, Maltfield,
Wedmore, BS28 4TP. 07557 444707.
[///desiring.sharper.clockwork](#)



39. Juliet Dallas-Conte
Max Gate, Browns Lane, Theale,
BS28 4SN. 07767 336266.
[///invent.tributes.guru](#)



40. Lily Sawtell
The Haven, Bagley, Wedmore, BS28
4TG. 07976 591741.
[///haven.coldnose.bungalow](#)



41. Somerset Crafts
Avalon Marshes Centre, Shapwick
Road, Westhay, BA6 9TT. 01458
860426. [///bronze.digests.exile](#)



42. Judith Champion
The Old Piggery Studio, Middle
Burnham Farm, Stoddens Lane,
Burnham-on-Sea, TA8 2DF. 07711
511134. [///firewall.tensions.cheaper](#)

16 September - 1 October

Somerset Open Studios 2023



43. Louise Squire
Willowherb Studio, Stoddens Farm,
191 Stoddens Road, Burnham-on-
Sea, TA8 2DE. 07730 889967.
///refers.spite.accompany



44. Ronnie Broadley
Garden Studio, 212 Burnham Road,
Burnham-on-Sea, TA8 1LT. 01278
786266. ///confined.shifts.guides



45. Cora Stock and Elly Burlow
47 The Esplanade, Burnham-on-Sea,
TA8 2AQ. 07859 557623.
///overdone.mows.foiled



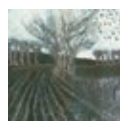
46. Sue Burne
6 Townsend Lane, Chilton Polden,
TA7 9EL. 01278 722706.
///counts.tested.rags



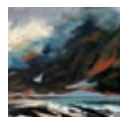
47. Nigel Downing
Rose Cottage, Middle Road,
Cossington, TA7 8LH. 07375 323786.
///talking.chart.shoelaces



48. A Load Of Old Scrap
The Old School Room, Causeway,
Woolavington, TA7 8DN. 07717
202182. ///riverboat.engulfing.boards



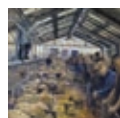
49. Jackie Curtis
2 Greenfield Lane, Bawdrip,
Bridgwater, TA7 8PX. 01278 685911.
///developed.people.letters



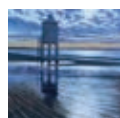
**50. Angela Uren, Juliet Harkness,
Margaret Micklewright**
Old Post Office, Front Street,
Chedzoy, TA7 8RE. 07800 814783.
///mingles.heaven.performs



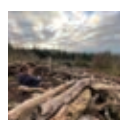
51. Pallker Art Glass
1 Monmouth Road, Westonzoyland,
TA7 0HE. 07968 285043.
///along.bigger.cubic



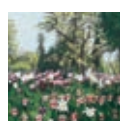
52. Ian Cryer
Felian, Meads Crossing, Huntworth,
TA7 0AG. 07801 906193.
///sing.soccer.locals



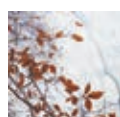
53. Bridgy Art Group
Bridgy Gallery, 4 Old Taunton Road,
Bridgwater, TA6 3NX. 07400 658834.
///confined.number.riverside



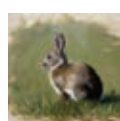
54. Luminara Florescu
Market House, Market Place, Castle
Cary, BA7 7AH. 01278 433187.
///slept.risk.mildest



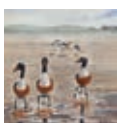
55. David Motion
21 Oak Apple Drive, Bridgwater, TA6
3UW. 07729 264214.
///swarm.bricks.scrubbing



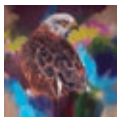
**56. Lizzie Myers
and Samantha Gilrairie**
Huntstile Organic Farm, Goathurst,
Bridgwater, TA5 2DQ. 07725 278280.
///superbly.round.plod



57. Teresa Davis
The Studio, 3 Dixies Cottages, Stone
Hall Lane, Enmore, TA5 2AL 07815
489104. ///kidney.comedy.vaccines



58. Tom Jacobs
8 Church Hill, Combwich, near
Bridgwater, TA5 2QR. 01278 652450.
///wove.tones.slicer



59. Jim Starr and Judith Westcott
Emmetts Grange Threshing Barn,
Emmetts Grange, Simonsbath, TA24
7LD. 07780 767563.
///swarm.trek.useful



60. Nancy J Bixby
Machine Court, Jury Road,
Dulverton, TA22 9NA. 01398 322807.
///equality.flickers.fracture



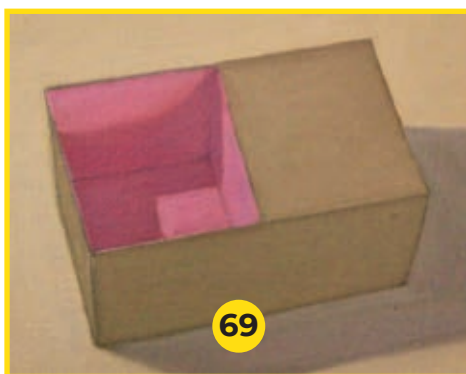
61. William Jones-Warner
The Old Chapel, Ash Lane, Winsford,
TA24 7JE. 07884 025929.
///nicely.steams.warned



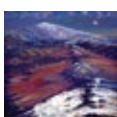
62. Micaela Beckett
Codecombe House, Cutcombe,
Wheddon Cross, TA24 7AJ. 01643
841406. ///intrigued.bunk.ally



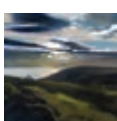
63. Patrick Bremer
The Workshops, Bickham Manor,
Timberscombe, TA24 7UA. 07729
264214. ///stress.fallback.brothers



**64. Abi Humphrey, Laurence
Rowlands, Angela Newbold**
The Garden Studio, Hillcrest, Bratton
Lane, Woodcombe, TA24 8SG. 07790
966813. ///rocks.terribly.songbook



65. Christopher Richards
Campions, Redgates Road,
Minehead, TA24 8DA. 01643 706014.
///plus.hours.dressings



66. Leo Davey
Leo Davey Studio & Gallery, 24c
Friday Street, Minehead, TA24 5UE.
07816 151433. ///crisis.flattens.cheer



67. Georgina King and Jill Davies
Townsend House, Townsend Road,
Minehead, TA24 5RG. 07966 838288.
///appealed.explores.liberated



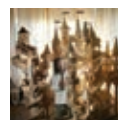
68. Peggy Lock
Spindles, Blue Anchor, Minehead,
TA24 6LB. 01643 821257.
///hopefully.shin.coping



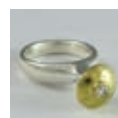
69. Robert Blackborow
1 Avis Hill, Washford, Watchet, TA23
0PL. 07547 578620.
///hats.reeling.cyber



**70. Jane Hood, Emma Lumley,
Nick Speakman**
2 White Horse Cottages, Washford,
TA23 0JZ. 07979 901784.
///panting.long.cluttered



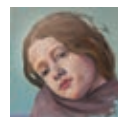
71. Rob Heard and Karina Heard
Torre Cider Farm, Washford,
Watchet, TA23 0LA. 07747 105072.
///earmarked.goes.closet



72. Jan Martin and Cecilia Leete
31 Causeway Terrace, Watchet, TA23
0HP. 07905 273933.
///scooter.spit.occupiers



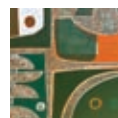
73. Christopher Williams
2 Severn Terrace, Watchet, TA23 0AS.
01984 631561.
///pesky.chatted.loudness



74. John Bowcock
The Sidings, Whitehall, Watchet,
TA23 0BD. 07982 238116.
///clumped.glow.moguls



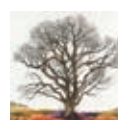
75. East Quay
East Quay, Harbour Road, Watchet,
TA23 0AQ. 01984 263103.
///motel.contoured.rockier



76. Albatross Print Studio
East Quay, Harbour Road, Watchet,
TA23 0AQ. 07963 692559.
///quest.wipe.proved



77. Jenny Barron
36 Causeway Terrace, Watchet, TA23
0HP. 07706 861395.
///vineyard.longingly.search



78. Janet Lawrence
4 Sampford Brett, near Williton TA4
4JY. 07342 988119.
///crisper.lived.beginning



**79. Fiona Meek
and Joanne Horrobin**
11 Lower Vellow, Williton, Taunton,
TA4 4LS. 07936 016481.
///spouse.buyers.hippy



80. Stogumber Art
The Skittle Alley, The White Horse
Inn, High Street, Stogumber, TA4
3TA. 07935 275583.
///incomes.regulator.ghosts



81. Annabel Gaitskell Anderson
6 Trendle Lane, Bicknoller,
Taunton, TA4 4EG. 01984 656844.
///occupiers.browsers.terminology

Somerset Open Studios 2023

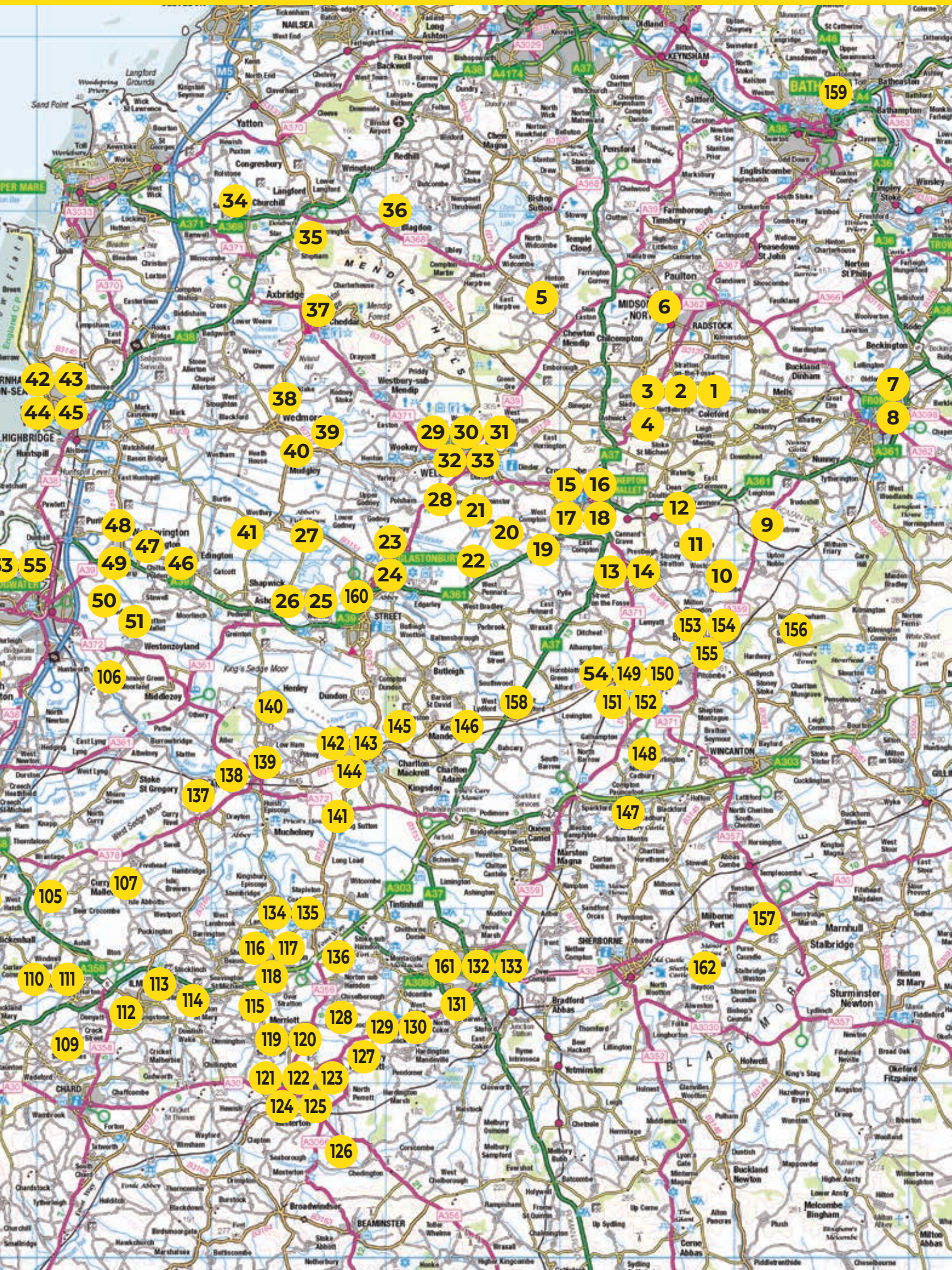


Download the App

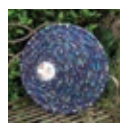
This map is intended as a guide only



16 September - 1 October



Somerset Open Studios 2023



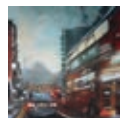
82. Kate Hammond
Heathercot Garden Studio,
Heathercot, Holford, Bridgwater, TA5
1RZ. 07526 682197.
///stamp.move.waking



83. Emma Duke
Ashfield Farm, Crowcombe, TA4
4AW. 07770 485822.
///reveal.unloads.assurance



84. Lyn and Magnus Mowat
Glebe Farmhouse, Brompton Ralph,
Taunton, TA4 2RY. 01984 656824.
///scatter.snuggled.starring



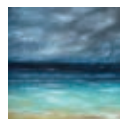
85. Colette Fowler-Marson
Fordgate Cottage, Ford,
Wiveliscombe, TA4 2RH. 07891
560540. ///rings.ruffling.cosmic



86. Tilly Willis
Bicknells, Bathealton, Taunton, TA4
2AN. 01984 624459.
///ballpoint.lamps.cackling



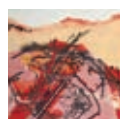
87. Annie Musgrove
Meadow Farm, Greenham,
Wellington, TA21 0JW. 07530 310795.
///skimmers.exonerate.shelf



88. Alexandra Lavizzari
108 Mantle Street, Wellington, TA21
8BD. 07535 005793.
///began.olive.permanent



89. The Old Brick Workshop
Higher Poole, Wellington, TA21 9HW.
07989 465427.
///gears.bagels.contoured



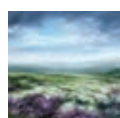
90. Bodkin Beak and Sally Hebel
12 Immenstadt Drive, Wellington,
TA21 9PT. 07969 570215.
///studs.sanded.jousting



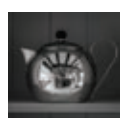
91. Una Lee
Sheppy's Cider Farm, Three Bridges,
Bradford-on-Tone, Taunton, TA4 1ER.
07531 115320.
///wharfs.captures.flotation



92. Jo Louca
Greenlands, Hele, Taunton, TA4 1AJ.
07916 279457. ///runner.thick.mini



93. Tess Armitage
The Studio, Watermans House, Frog
Street, Hillfarrance, Taunton, TA4
1AP. 07704 507903.
///figure.hamster.homecare



**94. Rachel Smith
and Gemma Merrell**
28 Stawell Road, Bishops Lydeard,
Taunton, TA4 3FA. 07854 747249.
///tent.loitering.yard



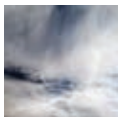
95. Kingston St Mary Art Exhibition
Village Hall, Church Lane, Kingston
St Mary, TA2 8HR. 01823 451877.
///former.aims.tides



**96. Naomi Kendall
and Lisa Takahashi**
Hestercombe, Cheddon Fitzpaine,
Taunton, TA2 8LG. 07764 500397.
///fancy.arena.tanks



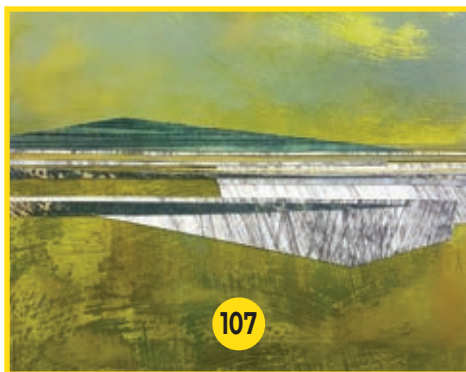
97. Jenny Sutton Kirby
Whitmore Barton, Whitmore Lane,
Staplegrove, Taunton, TA2 6SR.
07910 888498. ///alien.learns.cage



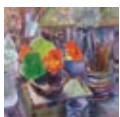
98. Behind The Scenes
Taunton Brewhouse, Coal Orchard,
Taunton, TA1 1JL. 01823 704045.
///snap.castle.lazy



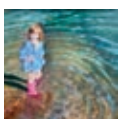
99. The Arts Hub
Flook House, Belvedere Road,
Taunton, TA1 1BT. 07503 308404.
///neon.punk.times



100. John Neville Jarrett
Taunton Library, Paul Street,
Taunton, TA1 3XZ. 01823 336334.
///strain.waving.poker



101. Pat Preater
The Studio, Northbrook Lodge, 49
Staplegrove Road, Taunton, TA1 1DG.
01823 283276. ///mime.target.years



102. Wendy Head
42 Batts Park, Taunton, TA1 4RE.
07786 933370. ///candle.onion.asset



103. Sarah Thompson-Engels
1 Honiton Road, Trull, Taunton, TA3
7EP. 07935 275583.
///complain.butternut.latched



104. Sharon Bradford
Badgers Holt, Frost Street, Thurlbear,
Taunton, TA3 5BA. 07814 842811.
///motorist.bronze.supposed



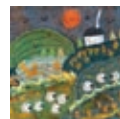
**105. Magnus Hammick
and Fiona Yates**
Close House, Hatch Beauchamp, TA3
6AE. 01823 480350.
///stay.spare.downs



106. Lucy Willis
Moorland House, Riverside,
Burrowbridge, TA7 0RG. 01823
698200. ///drilled.trunk.jetliner



107. Anna Morris
2 Church Street, Isle Abbots,
Taunton, TA3 6RJ. 07803 314356.
///goes.lecturing.hushed



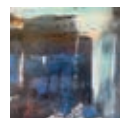
**108. June Dobson
and Sandra Aplin**
Colley Farm, Buckland St Mary, near
Chard, TA20 3QD. 07794 409012.
///rocket.permit.resort



**109. Derek Northfield
and Gill Wright**
2 Lucas Corner, Frog Lane, Combe St
Nicholas, Chard, TA20 3HQ. 07713
113491. ///daydreams.soil.dash



110. Christine Buckler
Glenalmond, Pottery Road, Horton,
TA19 9QN. 01460 258822.
///flip.assess.weddings



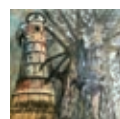
111. Mal Lee
Willow View, Pottery Road, Horton,
Ilminster, TA19 9QW. 07967 604316.
///habits.plotting.satin



112. Julia and Robert McKenzie
Granary House, Sea Farm, Sea,
Ilminster, TA19 0SB. 07906 571917.
///yards.funky.case



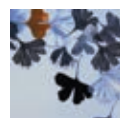
**113. Caroline Lewis, Wendy
Hermelin, Stephanie Mogg**
Haldon, Townsend, Ilminster, TA19
0JA. 07890 694559.
///maybe.joyously.decimal



114. Bronwen Coe
Pentire Cottage, Townsend,
Seavington St Mary, Ilminster, TA19
0QT. 07851 042793.
///scars.routes.steamed



**115. Angela Naunton Davies
and Marcus Jubb**
Denman Cottage, Church Street,
Lopen, TA13 5JX. 01460 240921.
///flannel.pioneered.broker



**116. Pennie Elfick
and Jane Rollason**
Coles Farm, Coles Lane, South
Petherton, TA13 5AF. 07803 965319.
///blindfold.corn.meals



117. Denise Webber
Holly Cottage, Yeabridge, TA13 5LW.
01460 240832.
///unfounded.blatantly.natural



118. The Polishing Room
Flaxdrayton Farm, South Petherton,
TA13 5LR. 07886 906262.
///scribble.oath.conceals



119. George Hider
Eggwood Farm, Bowood Lane,
Merriott, TA16 5QW. 01460 76100.
///unicorns.bluntly.bangle



120. David Brown
Highway Cottage, Church Street,
Merriott, TA16 5PR. 07378 767462.
///tamed.packages.snuggled

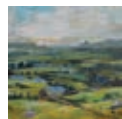
Somerset Open Studios 2023



121. Sue Ayres and Elizavetta Vandelli Clarke
The Crooked Swan, 4 Church Street, Crewkerne TA18 7HR 07484 778311.
///swims.divide.riverbed



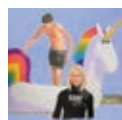
122. Emily Quince
2 George Lane, Crewkerne, TA18 7JW. 07483 232381.
///lined.iteration.bookcases



123. Lucy Hawkins
15 Foundry Square, Crewkerne, TA18 8HB. 07530 585181.
///shackles.rosette.imagined



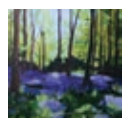
124. Jenny Mellings
Goldfinch Place, 19 East Street, Crewkerne, TA18 7AG. 01460 929428.
///salmon.changing.mavericks



125. Mike Chapman
207 South Street, Crewkerne, TA18 8AE. 07974 281408.
///factoring.circular.purified



126. Diana Jane
Threshers Barn, Hill Farm, South Perrott, DT8 3HS. 07894 460224.
///riverbed.outcasts.unheated



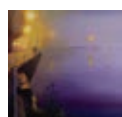
127. Caroline Croxson
The Cottage, Claycastle, Haselbury Plucknett, Crewkerne, TA18 7PB. 01460 394404.
///code.funky.cheetahs



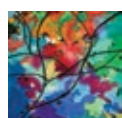
128. Deni Lauchlan
Old Beams, Lower Street, West Chinnock, Crewkerne, TA18 7PT. 07887 480878.
///onion.heavy.scarecrow



129. Alison Finch
Sandhill Barton, Weston Street, East Chinnock, BA22 9EQ. 07973 158123.
///clever.officials.relocated



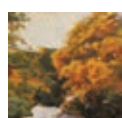
130. Martin Harris
The Gables, High Street, East Chinnock, BA22 9DR. 07779 929408.
///invested.purified.captions



131. Jill Preston
Drummers, 46 Lower Wraxhill Road, Yeovil, BA20 2JT. 01935 471843.
///saves.tonic.region



132. Yeovil Creatives
Yeovil Art Space, Unit 23, Vicarage Walk, Quedam Shopping Centre, Yeovil, BA20 1EU. 07360 861358.
///patrol.smashes.deny



133. Old Tannery Works
Old Tannery Works, Victoria Road, Yeovil, BA21 5AZ. 07966 005748.
///demand.undulation.newly



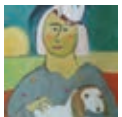
134. Ashar & Kampf
29 North Street, Martock, TA12 6DH. 07753 520479. ///hints.warp.stars



135. Christabel Atkins
Two Hoots, East Street, Martock, TA12 6NG. 07572 647523.
///buzzing.probe.auctioned



136. Lynn Brookes
4 The Wagon Shed, Flaxdrayton Farm, South Petherton, TA13 5LR. 07813 339295.
///strain.regular.scavenger



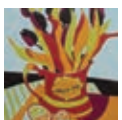
137. Artists at Wick Farm
Wick Farm, Wick, near Langport, TA10 ONL. awakeningsatwick.com.
///throw.ballooned.mimics



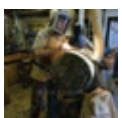
138. Heron House Studio
Heron House, North Street, Langport, TA10 9RQ. 07944 771679.
///kite.precautions.townhouse



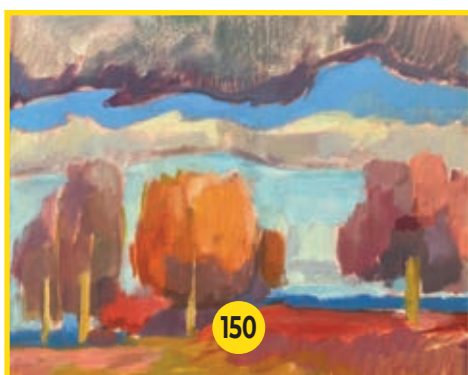
139. Stephen Jenkinson and Lia Duarte Jenkinson
Newtown Cottage, Newtown, Langport, TA10 9SE. 01458 253665.
///limit.soil.cello



140. Rob Ellis and Lucy Rodgers
Ellis Pottery, Stout Road, High Ham, TA10 9BY. 01458 251714.
///woke.overtones.divorcing



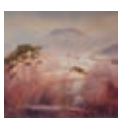
141. Dave Appleby
New Street House, New Street, Long Sutton, Langport, TA10 9JW. 01458 241522. ///mason.prank.relief



142. Sandra Meech and Elizabeth Brimelow
Ace Arts, The Old Town Hall, Market Place, Somerton, TA11 7NB. 01458 273008. ///stove.thrillers.sands



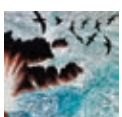
143. Janet Murphy
Ace Arts, The Old Town Hall, Market Place, Somerton, TA11 7NB. 01458 273008. ///stove.thrillers.sands



144. Antonia Myatt Corr
Myrtle Cottage, Gassons Lane, Somerton, TA11 6HW. 07870 387431.
///alley.ruffle.headed



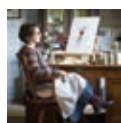
145. Jack West
The Well House, Hurcot, Somerton, TA11 6AA. 07904 036539.
///musically.snooping.years



146. Julia Manning and Paul Stubbs
2 Rosebank, Queen Street, Keinton Mandeville, TA11 6EQ. 07842 423987.
///rinsed.hunk.vibes



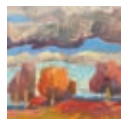
147. Claudia Gunton
9 Chapel Road, South Cadbury, Yeovil, BA22 7EX. 07446 271248.
///playroom.wins.behaving



148. Gael Sellwood
Higher Farmhouse, Woolston, North Cadbury, BA22 7BL. 07740 434304.
///reclaim.awake.elevates



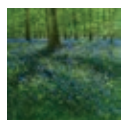
149. Scott & Baskeyfield
Pithers Yard, High Street, Castle Cary, BA7 7AN. 07792 723123.
///transcribes.radiates.barman



150. Charlotte Austen, Frances Watts, Dave Watts
The Old Printworks, Pithers Yard, High Street, Castle Cary, BA7 7AN. 07885 646506. ///stun.hood.develop



151. Will Vaughan and Angela Piggott
The Market House, Market Place, Castle Cary, BA7 7AH. 01963 351840.
///pheasants.sobered.eased



152. Max Oliver
Silver Ash Farm, South Street, Castle Cary, BA7 7ET. 07816 303479.
///deflated.dose.fires



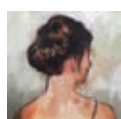
153. Jackie Brooks, Virginia Mason, Hannah Sida
Sunnydene, 76 High Street, Bruton, BA10 0AJ. 07886 190586.
///impeached.spend.ivory



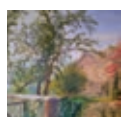
154. Alexandra Brown
No.6 Bruton, 6 High Street, Bruton, BA10 0AA. 07900 411620.
///rocky.hears.fool



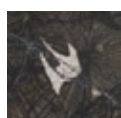
155. Kristen Lindop
9 Burrowfield Square, Bruton, BA10 0HR. 07866 074528.
///chariots.capers.narrow



156. Shave Farm Artists
Shave Farm, South Brewham, Bruton, BA10 0LG. 01749 812335.
///barks.shortcuts.shine



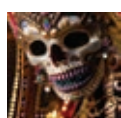
157. Lavinia Carey
Roundhill Lodge, Landshire Lane, Henstridge, Templecombe, BA8 0SD. 07770 476160.
///windy.hogs.matchbox



158. Camilla Nelson
New Farm, Lydford on Fosse, TA11 7HA. 07869 580529.
///kinks.custodian.paler



159. Katherine Fraser
41 Brooklyn Road, Bath, BA1 6TF. 07742 100883. ///brain.sides.sweep



160. Red Brick Building Open Studios
Morland Road, Glastonbury, BA6 9FT. redbrickbuilding.co.uk.
///grills.elder.waltzed



161. Portrait of the Artist
Westlands Entertainment Venue Westbourne Close, Yeovil, BA20 2DD. 01935 422884. ///sank.assure.fork



162. Paul Newman
Please see @paulnewmanartist on Instagram for details of events during Open Studios. paulnewmanartist.com

16 September - 1 October



BRIDGY GALLERY

Resident artists and guest artists creating in undercover yard
 Art experience sessions
 New local artist exhibit every six weeks
 Meet the artist days
 Artist in Action days
 Walled Memorial Sculpture garden under construction
 Historic site - Coach house and stables for St Saviours House
 Refreshments

4 OLD TAUNTON ROAD, BRIDGWATER, TA6 3NX
 bridgygallery.co.uk • 07956 942622 • sales@bridgygallery.com
 Wide entrance door ramp in garage gallery • Disabled toilet facilities



HERITAGE COURTYARD GALLERY AND STUDIOS

A unique and welcoming contemporary gallery with 9 artist studios in the heart of Wells. We are dedicated to supporting artists and makers, here in Somerset and the West Country. See our website for further information about workshops, events and gallery hire.

6 Heritage Courtyard, Sadler Street, Wells, BA5 2RR
 heritagecourtyardstudio.com



OPEN STUDIOS WITH JON MINSHULL

15TH SEPTEMBER - 1ST OCTOBER

ALSO FEATURING A SELECTION OF CORE ARTISTS. PLEASE VISIT OUR WEBSITE FOR MORE DETAILS



GALLERY OPEN THURSDAY-MONDAY 11.00-17.00

01458 780046

Gallery@HeartofTheTribe.com

www.HeartofTheTribe.com

f @HeartofTheTribeGallery

74 High Street, Glastonbury, BA6 9DZ



HEART OF THE TRIBE
 ART GALLERY



PLEASE SCAN QR CODE FOR MORE INFO

PRINTED

AN EXHIBITION OF WORK BY SOMERSET PRINTMAKERS



Leaves by Faye Suzannah

5TH OCTOBER - 6TH NOVEMBER
 CELEBRATORY DRINKS - SATURDAY 7TH OCTOBER 2-4PM

ART | ENERGY | COMMUNITY



'THE DISARMING AND THE DISARMED #2'
(Charcoal on Bristol board, 297 x 420 mm, 2020)



'WOMAN DRAWING' (Charcoal and chalk on
silver nitrate photograph, 210 x 290 mm, 2018)



'WINTER GARDEN' (Mixed media on lokta and
rag paper, 350 x 500 mm, 2022)

Denise Webber

Denise Webber works with photography drawing and film, often using herself as her subject and her childhood experiences and memories as source material. Everything that she does intrigues. She frequently combines photography, and drawing. "I like drawing on photographs. They have a surface you can't really penetrate, a kind of flat imagery and the colours can be quite grey."

Many of her motifs: shoes, a vixen skull, windows, reoccur in different iterations. An arched niche in a wall appears in her film *The Shoreline*. Hands move across the white roughened surface, feeling tentatively for handholds, for safety. Abandoned shoes litter the dunes, are lost to the waves and pencil thin heels are caked in mud. Like so many of her images they are deeply evocative.

Shoes reappear in *Threshold*, her exploration of the entrance to a Taoist building in Singapore. Feet lifted over a raised step transition from a street space to a sacred place. The focus is on the sense of physically, metaphorically and emotionally moving from one state or condition to another.

Webber has travelled extensively for work over the years and the blank canvas of a hotel room cries out for her interventions. Windows, a perennial theme, offer an opening with the potential to watch and be watched. *Everywhere that is not home* presents anonymous spaces unpeopled except by the artist herself. They have a particular resonance for her because she watched tanks rolling through the streets of Famagusta as a sixteen year old when war broke out in Cyprus. She challenges

the sense of agoraphobia, daring herself to leave what appears to be a safe space: "In order to be on the street you have to have validation. It's dangerous if people don't know why you are there." She feels safer carrying her camera.

In *The body as counterpoise* Webber places herself half in half out of a much-photographed window. She photographs herself and draws on the photo, adding an extra layer of meaning. Drawing on photographs is in itself problematic because the shiny surface resists marks.

There is a sense of displacement in *The inability to return*. Revisiting Famagusta, she risked taking photographs of the forbidden area of Varosha. Flimsy wire barriers prevent people entering what was a militarised zone. She was arrested by the police and forced to surrender her passport and driving licence. They deleted photos in which there were glimpses of buildings but allowed her to keep images of plants, and released her, for which she was grateful. The tangled vegetation growing in and through the wire fence symbolised containment and escape,



'THE BODY AS COUNTERPOISE #3' (Photograph
on archive paper with chalk, 495 x 330 mm, 2019)

territory and barriers. It reminded me of Cal Flynn's account of visiting the same place in her powerful book *Islands of Abandonment: Life in the post human landscape*.

More recently Webber has become entranced by a found vixen skull. In drawings and photographs she explores it as a symbol of mortality, seeing it as representative of the fierceness of the wild creature and the maternal fight to protect. She combs her hair with it and the actress in *The Shoreline* carries it with her at one point.

Much of her work evokes memories that are uncomfortable and sometimes disturbing. Her images of children handling machine guns and other assault weapons are shocking. This is not America where such weapons are common in domestic settings, this is in Dorset where children are handling decommissioned weapons in a safe environment, just as they might handle snakes in a zoo. For Webber these images 'sit somewhere between play and reality' and evoke memories of her frightening escape from Cyprus.

It is the art of suggestion, that anything is possible, which is so powerful in her work. Her experiences are gifted to the viewer in such a way that each individual can identify their own concerns within that narrative and take ownership of it for themselves.

Fiona Robinson

VENUE 117: Holly Cottage, YEABRIDGE, TA13 5LW. Friday - Sunday 12noon - 5pm. 01460 240832 / denisewebber.co.uk.

Somerset Open Studios 2023



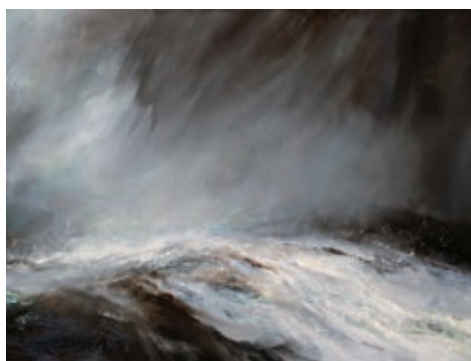
LUCY HAWKINS (VENUE 123)



SARAH BALL (VENUE 29)



LOUISE SQUIRE (VENUE 43)



JANETTE KERR (VENUE 1)



FIONA CAMPBELL (VENUE 12)



SALLY WETHERALL (VENUE 5)

BROCHURES

MAGAZINES

FLYERS

((acoustic))
DISTRIBUTION

We deliver any marketing material
Call Will on 07397 853006
acousticdistribution@btinternet.com
acousticdistribution.co.uk

Venue 67
Georgina King + Jill Davies
Mixed media, painting, printmaking
Townsend House, Townsend Road,
Minehead, TA24 5RG
Wednesday - Sunday 10am - 4pm
07966 838288

saw
40

lily sawtell
new ceramics

THE HAVEN BAGLEY WEDMORE BS28 4TG
T 07976 591741 W www.lilysawtell.com
E lilysawtell@gmail.com @lilysawtell
OPEN 10:00 - 5:00: WEDNESDAY - SUNDAY
CLOSED: MONDAY & TUESDAY



Lucy Hawkins

Venue 123

15 Foundry Square, Crewkerne, TA18 8HB

Open 10am - 5pm on 16, 17, 18, 19, 23, 24

and 30 September, plus 1 October

07530 585181 • lucyhawkinsartwork.co.uk

Instagram: @lucytipot

16/9
to
1/10 | **OPEN STUDIO**
NANCY BIXBY

MACHINE COURT
DULVERTON
TA22 9NA

Somerset
Art
Weeks



YEOVIL CREATIVES at YEOVIL ART SPACE

**Katy Armstrong, Celia Brokenshire, Jess Egan,
Dawn Handy, Ali Mauger, Stuart Speer**

Drawing, Painting, Pastels, Printmaking, Mosaic, Mixed Media



23 Vicarage Walk, Quedam Shopping Centre, Yeovil, BA20 1EU

10am - 4pm (closed Tuesdays) • yeovilartspace/openstudios

Old Tannery
VENUE 133, YEOVIL

Jill Preston
Bold, colourful abstract and
impressionistic paintings

Venue 131: Drummers
46 Lower Wraxhill Road, Yeovil, BA20 2JT
Open 10am - 6pm (closed 18th and 27th Sept)
01935 471843 • jillprestonpainter.co.uk

Somerset Open Studios
VENUE 59
*Follow the sun
- go WEST!*
**Jim Starr
and
Judith Westcott**

Louise Squire
Artist, designer, teacher with a
passion for the creative process.
Inspired by nature to paint, draw
and print. Art classes and creative
workshops - new programme
launches in September

**Willowherb Studio, Stoddens
Farm, 191 Stoddens Road,
Burnham-on-Sea, TA8 2DE**
10am - 5pm • 07730 889967
louise.willowherb@yahoo.co.uk
willowherbstudios.co.uk

Fiona Campbell
Venue 12: Laundry Cottage,
13 Cooks Lane, West Cranmore,
near Shepton Mallet, BA4 4RH
10am - 5pm / 07515 537224
fionacampbellart.co.uk

Venue 116
Pennie Elfick and Jane Rollason
Coles Farm, Coles Lane,
South Petherton, TA13 5AF
11am - 6pm
Closed Mondays and Tuesdays
pennieelfick.co.uk • janerollasonart.com

Venue 49
Jackie Curtis
PRINTMAKER
2 Greenfield Lane, Bawdrip,
Bridgwater, TA7 8PX
Open every day 10am - 5pm
01278 685911 • jcurtisart.com

VENUE 21
Charlotte Humpston
*Paintings and textiles
inspired by a trip to Mexico*
Orchard Studio
Folly Lodge, North Wootton,
near Shepton Mallet, BA4 4ER
10am - 5pm (Closed Mondays)
07976 166454

Venue 13
**JANE BRAYNE and
DAVID BRAYNE**
4 Enfield Terrace,
Weymouth Road,
Evercreech, BA4 6JE
16th - 23rd September
10am - 5pm
07763 857101
davidbrayne.com

LEO DAVEY
24c FRIDAY ST. (QUIRKE ST.)
MINEHEAD - TA24 5UE
16th Sept - 1st Oct (closed Mon)
10am - 5pm
www.leodavey.com

Julia Manning RE SWLA
Artist / Printmaker
Paul Stubbs
Potter (hands on workshops)
Venue 146: 2 Rosebank, Queen
Street, Keinton Mandeville, TA11 6EQ
Closed Tuesdays
07842 423987 • juliamanning.co.uk



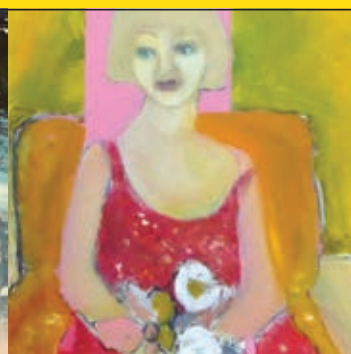
MOMENTUM: MEMORIES, JOURNEYS AND TIMES

Sandra Meech and Elizabeth Brimelow

9 September – 7 October



Market Place, Somerton, Somerset TA11 7NB
Tuesday - Saturday 10am - 5pm • 01458 273008 • acearts.co.uk



VENUE 156

SHAVE FARM ARTISTS

ROWENA PEARCE, ANNIE FRY,
LIN HAWKINS, TERRI HOGAN,
KAY LEWIS-BELL

Shave Farm
South Brewham
BA10 0LG

Thursday - Sunday 11am - 5pm



ATKINSON GALLERY

presents

CAPE FAREWELL: ART & CLIMATE CHANGE



11 SEPT - 11 OCT 2023

Featuring artists: David Buckland, Helen Moore, Chris Drury, Clare Twomey, Siobhan Davies,
Antony Gormley, Michele Noach, Rachel Whiteread, Dan Harvey, Leonid Tishkov, Ian McEwan, and more.



MILLFIELD

OPEN MON - THURS 9:30 - 17:00 Tel: (+44) 1458 444322 @ [instagram.com/atkinsongallery/](https://www.instagram.com/atkinsongallery/)
Millfield School, Butleigh Road, Street, Somerset, BA16 0YD @ atkinsongallery@millfieldschool.com

Visual Arts

SUSAN CLARKE: OPEN STUDIO 16 and 17 September

195 St Andrews Road, BRIDPORT,
DT6 3BT. 2 - 5pm. 0776 520 2421.



COLIN WILLEY: 'COUNTRY AND COAST'

16 September - 21 October

Gallery On The Square, Queen Mother Square, DORCHESTER, DT1 3BL. Monday - Saturday 9.30am - 5pm, Sunday 11am - 4pm. 01305 213322 / gallerypoundbury.co.uk. "New landscape paintings."

'COMMON THREAD'

16 September - 1 January

East Quay, WATCHET, TA23 0AQ. Monday - Sunday 10am - 5pm. eastquaywatchet.co.uk. "Embroidered works and tapestries by Somerset artist Lyn Barlow and Grayson Perry, telling the stories of two women, portrayed through a common medium - thread."

WINDWHISTLE DESIGNS

19 - 23 September

1 West Street, SOMERTON, TA11 7PS. 10am - 5pm. 07468 336801 / windwhistledesigns.com. "Contemporary design and art."

WINSHAM ART GROUP

23 and 24 September

The Jubilee Hall, WINSHAM, TA20 4HU. 10am - 5pm. 01460 30441.

RAVI BATALIA

27 September - 10 October

The Gallery, Shaftesbury Arts Centre, Bell Street, SHAFTESBURY, SP7 8AR. Monday - Saturday 10am - 4pm. shaftesburyartscentre.org.uk.

DORCHESTER CAMERA CLUB: 'INSPIRED BY LIGHT'

29 September - 1 October

Jubilee Hall, Great Cranford Street, POUNDBURY, Dorchester, DT1 3HQ. Friday 10am - 7pm, Saturday and Sunday 10am - 4pm. 07972 476588 / dorchestercameraclub.co.uk.



'ABSENCE' (Print on Pergamenata paper, 70 x 50 cm, 2023)

Pauline Scott-Garrett: Undertow

"Impactful large-scale print works and multi-media pieces, following a year-long research-based residency at The Whittox Gallery, a former chapel and place of sanctuary."

16 September - 5 November: The Whittox Gallery, RISE, Whittox Lane, FROME, BA11 3BY. Tuesday - Saturday 9am - 4pm, Sunday 10am - 4pm. 07712 523734 / thewhittoxgallery.com.



'INSPIRATION'

29 September - 5 October

Malthouse Gallery, Town Mill Courtyard, LYME REGIS, DT7 3PU. Friday 10am - 9pm, Saturday - Thursday 10am - 4pm. 01297 489438 / barbaragreen.co.uk. "Paintings, ceramics and stained glass by Ruta Crafter, Barbara Green (above), Ann Gray, Caroline Crawford, Merle Turner, Katy Tunstall, and Fiona Kenward."

QUENTIN BLAKE: 'ILLUSTRATING VERSE'

29 September - 6 January

Lighthouse, 21 Kingland Road, POOLE, BH15 1UG. Tuesday - Saturday 10am - 9pm. 01202 280000 / lighthousepoole.co.uk.

AVALON QUILTERS: 'QUILT SHOW'

30 September - 1 October

Meadway Hall, Ham Lane, COMPTON DUNDON, TA11 6PQ. 10am - 4pm. £3. 01935 8414102.

GROUP 7: 'CONNECTIONS'

30 September - 22 October

Sou'-Sou'-West Arts Gallery, Symonds Estate, BRIDPORT, DT6 6HG. 10.30am - 4.30pm. 01308 301326 / sousouwest.co.uk.

'FROM WORD TO WONDER'

30 September - 28 October

The Slade Centre, The Square, GILLINGHAM, SP8 4AY. Tuesday - Saturday 9am - 4pm. 07775 431652 / sladecentre.com. "An exhibition of art inspired by books, our impactful companions."

ELAINE KING

1 - 31 October

The Creative Gallery, St John's Hill, WAREHAM, BH20 4NB. Monday - Sunday 10am - 5pm. 01929 551505 / creativegallerywareham.co.uk. "Colourful, decorated earthenware pottery inspired trees and fruits."



SPiRE

A new collection of plein-air landscape drawings by Nick Andrew, looking back towards Salisbury Cathedral spire from thirty two compass points



9 September - 7 October
Fisherton Mill, Salisbury
www.nickandrew.co.uk
www.fishertonmill.co.uk



Percy Lizzard New Paintings

LIZZARD GALLERY

White House Farm, Shaftesbury Road, Shaftesbury, SP7 9NR

9 - 17 September

10am - 4pm every day • 07979 590790 • @percylizzard
A Blackmore Vale Art Trail event

EVOLVER MAGAZINE

DEADLINE FOR NEXT ISSUE

November and December 2023

SATURDAY 7 OCTOBER

The Gallery at



Shaftesbury
Arts Centre

Invites submissions to

The Shaftesbury Open

a selected open exhibition

Submissions open 1 September

Exhibition 6 - 23 December 2023

For further details and entry form
go to

www.shaftesburyartscentre.org.uk

Visual Arts



'BOMB DAMAGE'

Hubert Lancaster Harcourt

"Hubert Lancaster Harcourt was a commercial artist who also painted scenes of his time as a corporal in the Pioneer Corps during World War II. This exhibition brings together his extraordinarily evocative sketches, watercolours and paintings."

6 October - 4 November: Pound Arts, Pound Pill, CORSHAM, SN13 9HX. Monday - Saturday 10am - 9.30pm. poundarts.org.uk.

'OUR AMAZING PLANET'

3 - 28 October

Ilminster Arts Centre, The Meeting House, East Street, ILMINSTER, TA19 0AN. Tuesday - Saturday 9.30am - 3.30pm. themeetinghouse.org.uk.

'PAINTED, PRINTED, PRESERVED'

4 - 29 October

Walford Mill, Knobcrook Road, WIMBORNE, BH21 1NL. Wednesday - Saturday 10am - 5pm, Sunday 11am - 4pm. 01202 841400. "Caroline Soer and Shulla Jaques both draw inspiration from the natural world and share a delight in capturing its detail as well as responding to its ever-changing character."

WEST COUNTRY EMBROIDERERS:

'THE SOUTH WEST COAST PATH'

5 - 9 October

The Gallery Upstairs, Upton Country Park, POOLE, BH17 7BJ. 10am - 4.30pm. 01929 423931.

SOMERSET PRINTMAKERS:

'PRINTED'

5 October - 6 November

Heart of The Tribe Gallery, 74 High Street, GLASTONBURY, BA6 9DZ. Thursday - Monday 11am - 5pm. 01458 832167 / heartofthetribe.com.

TERRY FLAXTON

6 - 29 October

Roseberry Road Studios, 25 - 28 Roseberry Road, BATH, BA2 3DX. 11am - 5pm. 07548 722454 / roseberryroadstudios.com. "Exhibition of work by one of the UK's leading video artists."

'ART TO ART'

7 and 8 October

West Barn, Pound Lane, BRADFORD-ON-AVON, BA15 1LF. 10am - 4pm. 07811 102216 / batharttoart.weebly.com. "Ten painters display an array of techniques."

EVOLVER MAGAZINE FREE LISTINGS

Exhibition and performance listings should be emailed to listings@evolver.org.uk

Please send ALL information in the following order:

Event, date(s), venue, address (including postcode), times, admission fee (if any), contact number / website, up to 30 words about your event



Visual Arts

'TEMPLECOMBE ART EXHIBITION'

7 and 8 October

Village Hall, School Lane,
TEMPLECOMBE, BA8 OHP. 10am -
5pm. 01963 370866.

'ART ON THE HILL'

7 and 8 October

Various locations in and around
Windmill Hill, BRISTOL, BS3. 11am -
5pm. artonthehill.org.uk. "South
Bristol's premiere arts trail."

DORSET INDEPENDENT PHOTOGRAPHERS: 'A COLLECTION OF CURIOSITIES'

7 - 13 October

Malthouse Gallery, Town Mill
Courtyard, LYME REGIS, DT7 3PU.
10am - 4.30pm. 07972 476588.

PETER URSEM AND RUTH OAKS

11 - 24 October

The Gallery, Shaftesbury Arts
Centre, Bell Street, SHAFTESBURY,
SP7 8AR. Monday - Saturday 10am -
4pm. shaftesburyartscentre.org.uk.
Paintings and prints.

'MYSTERIOUS ADVENTURES'

11 October - 26 November

Rotunda Gallery, Lyme Regis
Museum, Bridge Street, LYME
REGIS, DT7 3QA. Tuesday - Saturday
10am - 5pm, Sunday 10am - 4pm.
£5.95. 01297 443370 /
lymeregismuseum.co.uk. "David
Brooke's intricate acrylic paintings
take you on a magical journey, full
of mystery and adventure."

'A FEELING FOR ART'

13 - 30 October

The Gallery Upstairs, Upton Country
Park, POOLE, BH17 7BJ. 10am -
4.30pm. thegalleryupstairs.org.uk /
pedas.org.uk.

'OUT AND ABOUT'

14 - 21 October

Wells and Mendip Museum, 8
Cathedral Close, WELLS, BA5 2UE.
Tuesday - Saturday 10am - 4pm.
Free entry. 01278 823644 /
avalonstitchers.org. "Contemporary
and traditional stitched textile art."

ACE ARTS OPEN

14 October - 11 November

ACE Arts, Market Place,
SOMERTON, TA11 7NB. Tuesday -
Saturday 10am - 5pm. 01458 273008
/ acearts.co.uk. "Selected works."



'PORTRAIT OF A LADY' (Detail, pencil and wash on paper, 26 x 16 cm, c. 1910)

Gwen John: Art and Life in London and Paris

"A new exhibition at Bath's Holburne Museum follows Gwen John's development from her early years at the Slade School of Fine Art in London to her permanent move to Paris in 1904 and the life she built as an artist there. *Gwen John: Art and Life in London and Paris* draws on new research into John's connections to her contemporaries and her personal library acquired by the National Library of Wales. Elements of her life touched upon within the exhibition's narrative include the relationship of her work to that of her brother Augustus John (1878 - 1961), her ten-year affair with the sculptor Auguste Rodin (1840 - 1917), and her connections with her other contemporaries and women artists of her time, such as Ida Nettleship (1877 - 1907) and Ursula Tyrwhitt (1878 - 1966). The idea of the artist as an eccentric recluse is successfully challenged as she is shown as a networked, engaged, radical modern woman. Through her work as a model and as an artist, Gwen John courageously challenged the conventions of her time."

21 October - 14 April: The Holburne Museum, BATH, BA2 4DB.
Monday - Saturday 10am - 5pm, Sunday and Bank Holidays 11am -
5pm. £11. 01225 388569 / holburne.org.

'SUFFOCATING CITY'

18 and 19 October

Arnolfini, 16 Narrow Quay, BRISTOL,
BS1 4QA. 6 - 10.30pm. 0117 917 2300
/ arnolfini.org.uk / leojamelli.co.uk.
"Leo Jamelli's powerful installation
aims to raise awareness of the
worsening problem of urban air
pollution and inspire people to
adopt a more eco-friendly
approach to city living."

MOIRA LADD: 'FLORA'

18 - 24 October

The Gallery, Shaftesbury Arts
Centre, Bell Street, SHAFTESBURY,
SP7 8AR. Monday - Saturday 10am -
4pm. shaftesburyartscentre.org.uk.



BROADSTONE ART SOCIETY

20 - 29 October

The Youth Centre, Moor Road,
Broadstone, POOLE, BH18 8AZ.
10am - 4pm.
broadstoneartsociety.com.

ELIAS SIME: 'EREGATA'

21 October - 18 February

Arnolfini, 16 Narrow Quay, BRISTOL,
BS1 4QA. Tuesday - Sunday 11am -
6pm. arnolfini.org.uk. "Major solo
exhibition by one of Ethiopia's
leading contemporary artists."

ANDREA JENKINS: 'PROGRESS REPORT'

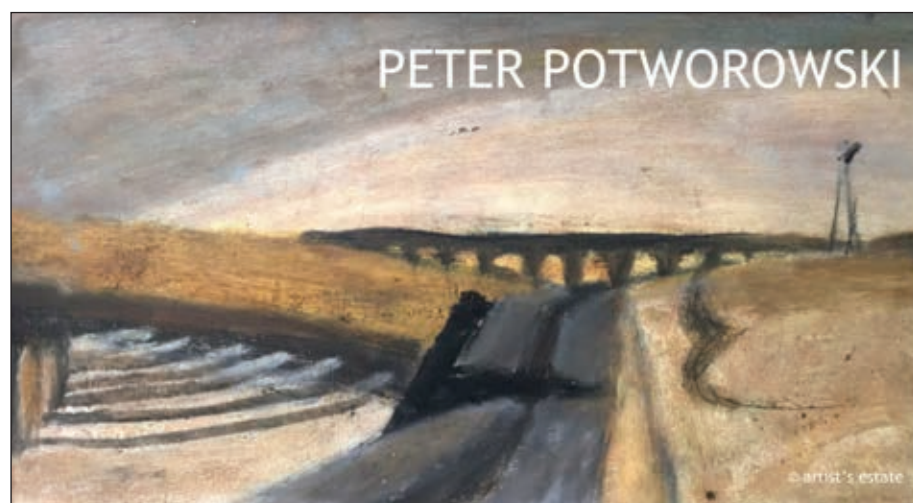
25 October - 7 November

The Gallery, Shaftesbury Arts
Centre, Bell Street, SHAFTESBURY,
SP7 8AR. Monday - Saturday 10am -
4pm. shaftesburyartscentre.org.uk.
"A progress report on 50 years of
this well known local artist's work."

'EVER PRESENT'

27 October - 5 November

Malthouse Gallery, Town Mill
Courtyard, LYME REGIS, DT7 3PU.
10am - 5pm. 07811 102216 /
alisonsheltonbrown.art. "A broad
range of art and gift ideas."



PETER POTWOROWSKI

West Country Exile

9 September-11 November, Free entry
Monday-Saturday, 10am-4pm

heritage@chippenham.gov.uk

01249 705020

chippenham.gov.uk / chippenham-museum



Chippenham
Museum

Chippenham Town Council

Music

September and October 2023



NATALIE CLEIN

Purbeck International Chamber Music Festival

"Purbeck International Chamber Music Festival is a unique and much-loved annual event in beautiful Dorset and the Isle of Purbeck. It features internationally renowned musicians and artists, including soloists, composers, artists, singers, and authors. The festival takes place every year at the end of summer in nine historic locations, set in intimate venues like the Lulworth Castle Chapel, The Victorian Hall in the Dorset Museum, and ancient churches in quaint villages around Dorset and Purbeck. Since its start in 2009, this festival has grown into a must-attend event, attracting international stars and a passionate audience. This year's performers include the festival's artistic director Natalie Clein, Kate Royal, the Danel Quartet, Vlad Bogdanas and Yovan Markovitch, Nurit Stark and Katharina Ziemke, Vivi Lachs, and Marianna Shirinyan."

7 - 10 September: Various locations in and around PURBECK, Dorset. picmf.org.

RICCARDO PES AND ALEXANDER BOYD

1 September

Bridport Arts Centre, South Street, BRIDPORT, DT6 3NR. 11.10am. £14. 01308 424901 / concertsinthewest.org.

THREE CANE WHALE

1 September

Sladers Yard, WEST BAY, Bridport, DT6 4EL. 7pm. £15. 01308 459511. "Highly acclaimed multi-instrumental acoustic chamber-folk trio."

RICCARDO PES AND ALEXANDER BOYD

1 September

Ilminster Arts Centre, East Street, ILMINSTER, TA19 0AN. 6.45pm. £18. 01460 54973 / concertsinthewest.org.

RICCARDO PES AND ALEXANDER BOYD

2 September

The Dance House, Gouldsbrook View, North Street, CREWKERNE, TA18 7AL. 6.45pm. £18. 01460 75928 / concertsinthewest.org.

JO BURT AND THE LAZY FARQUARS

2 September

The Beehive, Dowell Street, HONITON, EX14 1LZ. 7.30pm. £18 / £15. beehivehoniton.co.uk. "Heritage rock."



BROADBEAT

2 September

Broadway and Horton Cricket Ground, BROADWAY, near Ilminster, TA19 9JX. 2pm. £20 / £5. 07772 083111. "Rock'n'roll surf music all day featuring London's bad girl fronted The Trouble (The Shangri-las meet The Sonics), sci-fi surf nuts Palooka 5 (Joe Meek meets the B52s, above), The Obscuritones (classic rock'n'roll), The Sinictones (rock'n'roll surf), Planet Strange (psychobilly stompers), and The Tuppenny Bunters (classic piano driven rock'n'roll), plus DJs Lee Grimshaw and The Silver Dream Machine Disco."

BSO: 'PASSIONATE RACHMANINOV'

6 September

Weymouth Pavilion, The Esplanade, WEYMOUTH, DT4 8ED. 7.30pm. £29.50 / £17.50. 01305 783225 / weymouthpavilion.com.

YEOVIL CONCERT BAND

7 September

Martock Church, MARTOCK, TA12 6JL. 7.30pm. £12 / £10. 07547 213992.



AXE & TRAP STUDIOS IS A RECORDING FACILITY SITUATED AT THE FOOT OF THE MENDIP HILLS IN WELLS, SOMERSET.

Three performance spaces, 24 channel Trident console, extensive analogue outboard and much more.

Take a tour at
AXEANDTRAPSTUDIOS.COM

Music

THE PRODUCERS

7 September

The Corn Exchange, High East Street, DORCHESTER, DT1 1HF. 7pm. £16 / £14. 01305 266926. *Blues.*

MARTIN JAMES BARTLETT

8 September

The Corn Exchange, High East Street, DORCHESTER, DT1 1HF. 7pm. £25 / £23. 01305 266926 / dorchesterarts.org.uk. *Piano recital.*

THE KIERON GARRETT QUARTET

8 September

The Beehive, Dowell Street, HONITON, EX14 1LZ. 7.30pm. £15. beehivehoniton.co.uk. *Jazz.*

ECSTATIC DRUM BEATS + IMAN WEST + ANH

9 September

Arnolfini, 16 Narrow Quay, BRISTOL, BS1 4QA. 7.30pm. 0117 917 2300 / arnolfini.org.uk. "Dan Johnson closes his Arnolfini residency with a showcase of brand-new ensemble works composed in and specifically for Arnolfini's theatre space."

POOLE SYMPHONIC CONCERT BAND: 'MUSICAL MOVIE MAGIC'

9 September

Lighthouse, 21 Kingland Road, POOLE, BH15 1UG. 7.30pm. 01202 280000 / lighthousepoole.co.uk.

TAM LIN RETOLD

9 September

Taunton Brewhouse, Coal Orchard, TAUNTON, TA1 1JL. 7.45pm. £15.50. tauntonbrewhouse.co.uk. "Badass border balladry for the old and the new."

MATEUSZ RETTNER

13 September

The Pound Arts Centre, Pound Pill, CORSHAM, SN13 9HX. 1pm. £8. 01249 701628 / poundarts.org.uk.

DAPHNE'S FLIGHT

15 September

The Pound Arts Centre, Pound Pill, CORSHAM, SN13 9HX. 7.30pm. £20. 01249 701628 / poundarts.org.uk. "The music of Daphne's Flight is a magical layering of sensitivity, beauty, experience and empowerment with striking harmonies and supported by a range of instrumentation and percussion."



Askew Sisters

"Emily and Hazel have become known as two of the foremost performers and interpreters of English folk music. Expect beautifully sung arranged ballads from these folk legends."

22 September: Village Hall, HORNBLUTTON, BA4 6SF. 7.30pm. £15. 01963 240282 / takeart.org.

23 September: Village Hall, MARSTON MAGNA, BA22 8BY. 7pm. £12 / £8. 07956 961532 / takeart.org.

PRISTON FESTIVAL

15 - 17 September

The Village Green, PRISTON, Bath, BA2 9EE. 07871 572969 / priston.org.uk/festival. "A lovely community run music festival in a small village. 36 bands on 5 stages including the church, village hall, and pub. Jazz, folk, blues, rock... and Morris dancing!"

MOSCOW DRUG CLUB

15 September

The Corn Exchange, High East Street, DORCHESTER, DT1 1HF. 7pm. £17 / £15. dorchesterarts.org.uk.

OPA ROSA

15 September

Rose and Crown, LANGPORT, TA10 9QT. 6pm. Free entry. 01458 250494 / takeart.org. "Skilled interpreters of Klezmer, Balkan, Greek and Roma music, Opa Rosa are fast gaining a reputation as one of Bristol's most dynamic bands."



ADAM BEATTIE

16 September

The Pound Arts Centre, Pound Pill, CORSHAM, SN13 9HX. 7.30pm. £14. 01249 701628 / poundarts.org.uk. "Original contemporary Scottish folk songs."

DR BEATROOT

16 September

The Belvedere, 33 - 34 High West Street, WEYMOUTH, DT4 8JH. 9pm. Free entry. 01305 459099. "Bluegrass and skiffle!"

THE DRIFTERS

16 September

Lighthouse, 21 Kingland Road, POOLE, BH15 1UG. 7.45pm. 01202 280000 / lighthousepoole.co.uk.

OLD TIME SAILORS

18 September

The Exchange, Old Market Hill, STURMINSTER NEWTON, DT10 1FH. 7.30pm. £18. 01258 475137 / stur-exchange.co.uk. "An immersive experience of traditional seafaring music performed in a way you have never seen before."

CLIMAX BLUES BAND

22 September

The Beehive, Dowell Street, HONITON, EX14 1LZ. 7.30pm. £26. 01404 384050 / beehivehoniton.co.uk. "A unique combination of jazz and blues. New music blending the old with the new."

Music at 50TH BRIDPORT ARTS CENTRE

bridport-arts.com
01308 424 901



The Charlie Parker Story
Friday 22nd Sept | 8pm



Concert : Bach & Trevelyan
Friday 6th Oct | 11:30am



Benny Vibes Again
Saturday 7th Oct | 7:30pm



Faith | Branko
Thursday 26th Oct | 7:30pm



Owen Spafford & Louis Campbell

"Spafford and Campbell's live performances present an extraordinary sense of musical intimacy, covering the full dynamic spectrum, with as much of themselves being put into every note as possible."

23 September: The Pound Arts Centre, Pound Pill, CORSHAM, SN13 9HX. 7.30pm. £13. 01249 701628 / poundarts.org.uk.

RICHARD DURRANT

22 September

The Pound Arts Centre, Pound Pill, CORSHAM, SN13 9HX. 7.30pm. £20. 01249 701628 / poundarts.org.uk. *"An unusual concert of acoustic music."*

THE RHEINGANS SISTERS

23 September

The Beehive, Dowell Street, HONITON, EX14 1LZ. 7.30pm. £15. beehivehoniton.co.uk. *"Playful, powerful and richly connecting folk music."*

NASTY FISHMONGER

23 September

The Belvedere, 33 - 34 High West Street, WEYMOUTH, DT4 8JH. 9pm. Free entry. 01305 459099. *"Shanty-folk-punk rabble rousers."*



JIM CAUSLEY & JOHN KIRKPATRICK

23 September

Widcombe Social Club, Widcombe Hill, BATH, BA2 6AA. 7.30pm. £16 / £14. 07880 703518 / europeanfolkday.eu. *"Two of the finest performers and interpreters of English and West Country folk traditions celebrate the first ever pan-European Folk Day."*

FLY 52 + KINGSFOIL + SKINNY KNOWLEDGE

28 September

Lighthouse, 21 Kingland Road, POOLE, BH15 1UG. 7.30pm. 01202 280000 / lighthousepoole.co.uk.

THE JACKIE OATES TRIO

28 September

The Pound Arts Centre, Pound Pill, CORSHAM, SN13 9HX. 7.30pm. £16. 01249 701628 / poundarts.org.uk. *"Contemporary folk."*

BSO: 'PASSIONATE RACHMANINOV'

28 September

Great Hall, University of Exeter, Stocker Road, EXETER, EX4 4PY. 7.30pm. £39 / £15. 01202 669925 / bsolive.com.

PHILIP CLOUTS QUARTET

28 September

The Corn Exchange, High East Street, DORCHESTER, DT1 1HF. 7pm. £16 / £14. dorchesterarts.org.uk. *Jazz.*

MICK O'TOOLE

29 September

The Ropemakers, 36 West Street, BRIDPORT, DT6 3QP. 9pm. Free entry. theropemakers.com. *"Top notch British folk-punk."*

ROB SPALDING

29 September

Art Bank, 13 High Street, SHEPTON MALLET, BA4 5AA. £7 / £5. 7pm. artbank.org.uk. *"Rivers of England frontman launches his solo EP."*

LIANE CARROLL TRIO

29 September

Lighthouse, 21 Kingland Road, POOLE, BH15 1UG. 7.45pm. lighthousepoole.co.uk. *Jazz.*

THE DUNWELLS

29 September

Taunton Brewhouse, Coal Orchard, TAUNTON, TA1 1JL. 7.45pm. £15. tauntonbrewhouse.co.uk. *"Leeds-based indie-folk-pop band with strong vocals, powerful melodies, and heartfelt lyrics."*

BLIMEY OH RILEY

30 September

The Beehive, Dowell Street, HONITON, EX14 1LZ. 8pm. £11. 01404 384050 / beehivehoniton.co.uk. *"Ska, rock and reggae!"*

MAD DOG MCREA

30 September

The Exchange, Old Market Hill, STURMINSTER NEWTON, DT10 1FH. 8pm. £21. stur-exchange.co.uk. *"A unique mixture of folk rock, pop, gypsy jazz and bluegrass."*

BSO: 'RACHMANINOV'S RHAPSODY'

4 October

Lighthouse, 21 Kingland Road, POOLE, BH15 1UG. 7.30pm. 01202 280000 / lighthousepoole.co.uk.

MIKE DENHAM SPEAKEASY WITH BEN CUMMINGS

5 October

The Corn Exchange, High East Street, DORCHESTER, DT1 1HF. 7pm. £15 / £13. dorchesterarts.org.uk.

PICMF

7-10 September 2023

Forgotten Voices

Natalie Clein artistic director

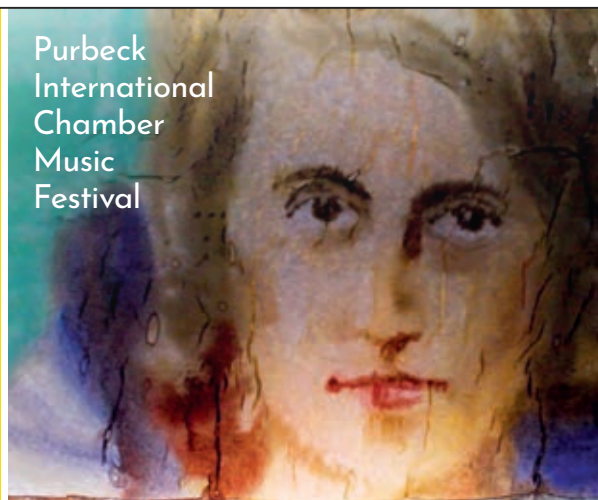
Come and enjoy 11 exhilarating concerts over 4 days in beautiful and intimate venues across Dorset.



www.picmf.org

OR CALL **0333 666 3366**

Purbeck
International
Chamber
Music
Festival





Simeon Walker

"This prolific UK-based pianist and composer Simeon Walker has quickly emerged as a leading light in the burgeoning Modern Classical scene, regularly performing and touring across the UK and Europe."

11 October: The Pound Arts Centre, Pound Pill, CORSHAM, SN13 9HX. 1pm. £8. 01249 701628 / poundarts.org.uk.

KATHRYN ROBERTS & SEAN LAKEMAN

5 October
Taunton Brewhouse, Coal Orchard, TAUNTON, TA1 1JL. 7.30pm. £19. tauntonbrewhouse.co.uk. "This popular, multi award-winning husband and wife duo exude timeless class with their exquisite brand of traditional and contemporary music."

THE HAAR

5 October
The Beehive, Dowell Street, HONITON, EX14 1LZ. 7.30pm. £6. beehivehoniton.co.uk. "Unique and compelling folk music."



JINGU BANG

6 October
The Red Brick Building, Morland Road, GLASTONBURY, BA6 9FT. 7.30pm. £15 / £12. redbrickbuilding.co.uk. "Free-flowing funk mastery."

EMMANUEL BACH AND JULIAN TREVELYAN

6 October
Bridport Arts Centre, South Street, BRIDPORT, DT6 3NR. 11.10am. £14. concertsinthewest.org. "Music for violin and piano, including masterpieces by Mozart, Brahms and Britten."

EMMANUEL BACH AND JULIAN TREVELYAN

6 October
Ilminster Arts Centre, East Street, ILMINSTER, TA19 0AN. 6.45pm. £18. 01460 54973 / concertsinthewest.org. See above.

EMMANUEL BACH AND JULIAN TREVELYAN

7 October
The Dance House, Gouldsbrook View, North Street, CREWKERNE, TA18 7AL. 6.45pm. £18. 01460 75928 / concertsinthewest.org. See 6 October.

RACHEL NEWTON

7 October
The Pound Arts Centre, Pound Pill, CORSHAM, SN13 9HX. 7.30pm. £13 / £11. 01249 701628 / poundarts.org.uk. "Singer and harpist Rachel Newton draws on poems and ballads that are hundreds of years old, working them into her contemporary compositional style to create a rich and unique sound."

PETER GILL

7 October
The Exchange, Old Market Hill, STURMINSTER NEWTON, DT10 1FH. 7.30pm. £18. 01258 475137 / stur-exchange.co.uk. "Breathtaking piano playing."

BSO: 'EASTERN PROMISE'

11 October
Lighthouse, 21 Kingland Road, POOLE, BH15 1UG. 7.30pm. 01202 280000 / lighthousepoole.co.uk.

ANDREW MCCORMACK TRIO

13 October
Lighthouse, 21 Kingland Road, POOLE, BH15 1UG. 7.45pm. 01202 280000 / lighthousepoole.co.uk. Jazz.

Concerts IN THE West

CHAMBER MUSIC MINI-TOURS IN
DORSET AND SOMERSET
AUTUMN SEASON 2023
BRIDPORT — CREWKERNE — ILMINSTER — UPLYME

3 FEBRUARY TO 5 NOVEMBER 2023



• 1, 2 SEPTEMBER

RICCARDO PES CELLO
ALEXANDER BOYD PIANO

• 6, 7 OCTOBER

EMMANUEL BACH VIOLIN
JULIAN TREVELYAN PIANO

• 3, 4, 5 NOVEMBER

FITZROY QUARTET
DAN-IULIAN DRUTAC VIOLIN
JURE SMIRNOV OSTIR VIOLIN
EMILY POND VIOLA
MICHAEL NEWMAN CELLO



Please visit our website for performers, programmes, venues, dates and how to book.

Online booking — <https://tickets.concertsinthewest.org/>
concertsinthewest@gmail.com — CATHERINE MADDOCKS DIRECTOR

www.concertsinthewest.org

THE SOUND OF THE STREETS FESTIVAL 2023



29TH SEPT - 1ST OCT

Taunton | Goodland Gardens & around the town

THE SOUND OF THE STREETS FESTIVAL RETURNS TO TAUNTON FOR 2023!

A FREE weekend of music with performances from Perhaps Contraption, Ilu Axé, Tongues of Fire, Wonderbrass, The Ambling Band, Brass Junkies & more! Plus lots of opportunities to join in with workshops & participatory sessions led by fantastic musicians.

Find full details & programme online:

thesoundofthestreets.com

[@thesoundofthestreetsfest](https://www.facebook.com/thesoundofthestreetsfest)



SEPHORA

13 October

Creative Innovation Centre, Paul Street, TAUNTON, TA1 3PF. 8pm. £14 / £12. 01823 337477. "Hot acoustic swing."

BSO: 'EASTERN PROMISE'

13 October

Great Hall, University of Exeter, Stocker Road, EXETER, EX4 4PY. 7.30pm. £39 / £15. bsolive.com.

SUNSET VALLEY STOMPERS

14 October

Bridgwater Arts Centre, 11 - 13 Castle Street, BRIDGWATER, TA6 3DD. 8pm. £15. 01278 422700. Jazz.

BSO: 'VIOLIN FIREWORKS'

18 October

Lighthouse, 21 Kingland Road, POOLE, BH15 1UG. 7.30pm. 01202 280000 / lighthousepoole.co.uk.

BLUE ROSE CODE

18 October

Lighthouse, 21 Kingland Road, POOLE, BH15 1UG. 8pm. 01202 280000 / lighthousepoole.co.uk. "Ross Wilson addresses universal themes of love, loss, home and faith in a deeply personal way, and seamlessly blends folk, Americana, jazz, soul and pop influences into something truly unique."

THE PRODUCERS

20 October

Bridgwater Arts Centre, 11 - 13 Castle Street, BRIDGWATER, TA6 3DD. 8pm. £18. 01278 422700 / bridgwaterartscentre.co.uk. Blues.

FAIRPORT CONVENTION

20 October

The Beehive, Dowell Street, HONITON, EX14 1LZ. 7.30pm. £28. beehivehoniton.co.uk.

BSO: 'THE TWO OF US'

21 October

Lighthouse, 21 Kingland Road, POOLE, BH15 1UG. 7.30pm. 01202 280000 / lighthousepoole.co.uk. "Mark McGann as John Lennon, Joe Stilgoe as Paul McCartney, with Claire Martin and conductor David Brophy join the BSO for a two-act evening that takes us chronologically from Lennon and McCartney's first meeting in 1957 to the end of The Beatles in 1970."



Sunbirds

"The man who once told us he loved us from the bottom of his pencil case, founder Beautiful South member Dave Hemingway comes to Chippenham with his new band Sunbirds."

22 October: Neeld Community & Arts Centre, High Street, CHIPPENHAM, SN15 3ER. 7.30pm. £17.50 / £15. 01249 446699 / neeld.co.uk.



LEIGH COLEMAN QUINTET

21 October

The Gateway Theatre, Fore Street, SEATON, EX12 2LE. 6.15pm. £37.50 (includes supper). 01297 625 699 / jazzjurassica.co.uk. Jazz.

TAUNTON DEANE MALE VOICE CHOIR

21 October

Martock Church, MARTOCK, TA12 6JL. 7.30pm. £12 / £10. 07547 213992.

BSO: 'LOVE AND DEATH'

25 October

Lighthouse, 21 Kingland Road, POOLE, BH15 1UG. 7.30pm. 01202 280000 / lighthousepoole.co.uk.

BSO: 'LOVE AND DEATH'

26 October

Great Hall, University of Exeter, Stocker Road, EXETER, EX4 4PY. 7.30pm. £39 / £15. bsolive.com.

KYLE NASH-BAKER AND RAYMOND YIU

26 October

Lighthouse, 21 Kingland Road, POOLE, BH15 1UG. 1.05pm. 01202 280000 / lighthousepoole.co.uk. "Solo and four hands piano music by Ravel, Mozart, Rachmaninoff and Beethoven."

NICOLE PEREZ

26 October

Art Bank, 13 High Street, SHEPTON MALLEY, BA4 5AA. 7pm. Free entry. artbank.org.uk. "French chanteuse brings her unique blend of classic and catchy bossa nova jazz."

GRIZZLY & THE GRASSHOPPERS + CONCRETE PRAIRIE + DAVID GORDON

26 October

Lighthouse, 21 Kingland Road, POOLE, BH15 1UG. 7.30pm. 01202 280000 / lighthousepoole.co.uk.



FAITH I BRANKO

26 October

Bridport Arts Centre, 9 South Street, BRIDPORT, DT6 3NR. 7pm. £14 / £12. 01308 424901 / bridport-arts.com. "Leading Serbian Roma violinist Branko Ristic performs virtuosic original Roma-influenced music."

THE DEVIL'S DAMNED STRING BAND

27 October

The Ropemakers, 36 West Street, BRIDPORT, DT6 3QP. 9pm. Free entry. theropemakers.com.

GILMORE & ROBERTS

27 October

Taunton Brewhouse, Coal Orchard, TAUNTON, TA1 1JL. 7.45pm. £16.50 / £14.50. tauntonbrewhouse.co.uk.

MISHRA

28 October

Lighthouse, 21 Kingland Road, POOLE, BH15 1UG. 8pm. 01202 280000 / lighthousepoole.co.uk.



We are a funky, independent record shop stocking a great range of new and preloved vinyl, specialising in Reggae, Hip Hop, Soul, Funk, World, Electronic, Jazz, Blues, Alternative, Indie, Rock, Pop and more

8a Pope Street, Brewery Square, Dorchester, DT1 1GW
Tuesday to Saturday from 10am

CLOCKTOWER RECORDS

Unit 10a
St Michael's Estate
St Michael's Lane
Bridport
Dorset DT6 3RR
+
35a South Street
Bridport
Dorset DT6 3NY

Monday to Saturday
10am - 4.30pm

clocktowermusic.co.uk



Performance

September and October 2023

MINEHEAD BAY FESTIVAL

2 September

Minehead Esplanade, Warren Road, MINEHEAD, TA23 5BG. 12noon - 6pm. 07714 230045. "Vibrant live music, community spirit, family fun, delicious food and drink, plus exhilarating circus performances."

'THE TEMPEST'

2 September

Portland Castle, Liberty Road, Castletown, PORTLAND, DT5 1AZ. 6pm. £15 / £12. sisata.co.uk.



LANDANCE: 'LIGHT'

6 and 7 September

Swanage Amphitheatre, Peveril Point Road, SWANAGE, BH19 2AW. 7.30pm. Free entry. 07817 908965 / landance.org.uk. "Professional and local young dancers create a memorable and uplifting experience as darkness descends."



10 PARISHES FESTIVAL

9 - 17 September

Various locations in and around WIVELISCOMBE. 01984 624564 / 10parishesfestival.org.uk. "Visual and performing arts festival, featuring over 50 artists and performers."

Above: Tannahill Weavers



Luke Wright

"Award-winning poet Luke Wright navigates his audience through a warm and honest hour of poems and stand-up with the directness and pathos that has made him one of the most popular live poets in England."

27 October: Bridport Arts Centre, 9 South Street, BRIDPORT, DT6 3NR. 7pm. £16 / £13. 01308 424901 / bridport-arts.com.

28 October: The Pound Arts Centre, Pound Pill, CORSHAM, SN13 9HX. 7.30pm. £14. 01249 701628 / poundarts.org.uk

'THE TEMPEST'

13 and 14 September

Lighthouse, 21 Kingland Road, POOLE, BH15 1UG. 8pm. £13.75. 01202 280000 / lighthousepoole.co.uk. "A great storm is coming to the Isle of Portland, bringing trouble to its shores. Prospero's spells wash ashore the ghosts of his past, triggering strange magical consequences for Portlanders Miranda, Ariel and Caliban."



MILES JUPP: 'ON I BANG'

13 and 14 September

The Pound Arts Centre, Pound Pill, CORSHAM, SN13 9HX. 8pm. £10. poundarts.org.uk. Comedy.

'LEGENDS OF VARIETY'

14 September

Lighthouse, 21 Kingland Road, POOLE, BH15 1UG. 2pm. 01202 280000 / lighthousepoole.co.uk.

CAROLINE BERGVALL:

'NOTTSONG (51°27'N BRISTOL)'

22 September

Arnolfini, 16 Narrow Quay, BRISTOL, BS1 4QA. 8.30pm. £15 / £7.50. arnolfini.org.uk. "A performance for spoken and sung voices, electronics and multiple languages."

SMITH & LYALL MUSIC RESPONSE:001

AN EXHIBITION OF COSTUMES FROM
THE CHEMICAL BROTHERS CONCERT VISUALS
DESIGNED BY SMITH & LYALL AND KATE TABOR

COMMERCE HOUSE
MARKET PLACE WINCANTON BA9 9LP

OPENING TIMES:
FRIDAY 2-7PM SATURDAYS AND SUNDAYS 11AM - 5PM
14TH 15TH 20TH 21ST 22ND 27TH 28TH AND 29TH OCTOBER



Performance



CHLOE LOFTUS AND RODNEY BELL: 'THE AIR BETWEEN US'

Inside Out Dorset

Activate Performing Arts' biennial outdoor arts festival, *Inside Out Dorset*, comprises of performances, workshops, installations, parades and more at five sites across Dorset. The festival's finale weekend will see a spectacular parade of light and music weave through Weymouth led by Transe Express' *Poupées Géantes*. Three giant dolls will glide magically through the crowd, with the voices of three opera singers transforming the street into an opera house. The singers will perform beloved classical pieces by composers such as Bizet, Mozart and Verdi, their beautiful voices contrasting with the rhythmic backing from Les Tambours that creates a powerful sound combining percussive traditions from around the world.

Over the weekend of 16th and 17th September, the festival takes place in Poole and Wimborne. One highlight will see critically acclaimed choreographer Chloe Loftus and multi-award winning Maori artist Rodney Bell - who performs in his wheelchair - performing *The Air Between Us*, a captivating outdoor aerial dance event. Further performances over the weekend include Company Satchok presenting their hilarious acrobatic take on Sisyphus in the banquine style, and two dissimilar bodies meet in Chris Iris's *Gap of 42* to create an extraordinary compilation of contemporary circus, physical theatre and dance. Contemporary circus duo Duo Kaos will bring their signature style to *Time to Loop*, combining lightness of movement with a bicycle! Dance, music and live ceramics combine in The Clay Connection's *Lives of Clay*, a unique theatrical event that combines storytelling and dancing with throwing pots on stage.

As well as Weymouth, Poole and Wimborne, *Inside Out Dorset* will be heading to Moors Valley Country Park and Forest and Dorset Wildlife Trust's Wild Woodbury site in Bere Regis with performances featuring international, UK and South West artists.

15 - 24 September: Locations throughout DORSET. activateperformingarts.org.uk.

'THE GENEVA CONVENTION OF HUMAN F**KS'

22 September

Taunton Brewhouse, Coal Orchard, TAUNTON, TA1 1JL. 7.45pm. £13.50 / £11.50. tauntonbrewhouse.co.uk.



MELANIE THOMPSON: 'NOTHING IS WHAT IT SEEMS TO BE'

22 - 24 September

Zig Zag Building, Morland Road, Northover, GLASTONBURY, BA6 9FT. 6pm. £8. 07971 225874 / melaniethompson.me.uk. "Site-specific live performance."

'SHOWSTOPPER! THE IMPROVISED MUSICAL'

23 September

Lighthouse, 21 Kingland Road, POOLE, BH15 1UG. 7.45pm. 01202 280000 / lighthousepoole.co.uk.

HELEN BAUER

23 September

Lighthouse, 21 Kingland Road, POOLE, BH15 1UG. 8pm. lighthousepoole.co.uk. Comedy.

SIMON EVANS: 'HAVE WE MET?'

23 September

Hardye Theatre, Thomas Hardye School, DORCHESTER, DT1 2ET. 7pm. £19 / £17. 01305 266926.

DOPPELGANGER: 'VIGILANTE'

27 September

Lighthouse, 21 Kingland Road, POOLE, BH15 1UG. 8pm. 01202 280000 / lighthousepoole.co.uk.

'MUCH ADO ABOUT NOTHING'

27 September

Taunton Brewhouse, Coal Orchard, TAUNTON, TA1 1JL. 7.30pm. £24.50 / £22.50. tauntonbrewhouse.co.uk.

'PHONEY TOWERS'

29 September

Bridgwater Arts Centre, 11 - 13 Castle Street, BRIDGWATER, TA6 3DD. 7.30pm. £18. 01278 422700.

AcousticAerial

SOMETIMES THE BEST VIEW IS FROM THE AIR
WE USE DRONES TO CREATE STUNNING 4K AERIAL
FOOTAGE AND STILL PHOTOGRAPHS
acousticaerial.com • jakefranks@acousticaerial.com

10parishesfestival
visual and performing arts

9th-17th September 2023

Across 10 Parishes
centred on Wiveliscombe
in West Somerset

10parishesfestival.org.uk
info@10parishesfestival.org.uk
01984 624564

The 10 Parishes Festival is operated by Wiveliscombe Area Partnership.
Registered in England and Wales No. 4351175, Charity No. 1132983

Performance

JO CAULFIELD: 'HERE COMES TROUBLE!'

29 September

Taunton Brewhouse, Coal Orchard, TAUNTON, TA1 1JL. 8pm. £19. 01823 283244 / tauntonbrewhouse.co.uk. Comedy.

MANY HANDS: 'LIGHT WORK'

30 September

Caryford Community Hall, Maggs Lane, Ansford, CASTLE CARY, BA7 7JJ. 2.30pm. £12 / £6. takeart.org. "Exciting new circus! Many Hands create complex shapes and tall towers using only performers' bodies."



SARAH-LOUISE YOUNG: 'THE SILENT TREATMENT'

30 September

The Pound Arts Centre, Pound Pill, CORSHAM, SN13 9HX. 7.30pm. £14. 01249 701628 / poundarts.org.uk. "The true story of a singer who loses her voice and embarks on an unexpected journey of self-revelation."

CIRCUS CITY FESTIVAL 2023

1 - 22 October

Various locations in BRISTOL. 07792 676863 / bristolcircuscity.com. "The UK's largest contemporary circus festival returns to Bristol with a city-wide programme of performance blending circus with music, film, theatre, dance and more."

'OEDIPUS ELECTRONICA'

3 October

Lighthouse, 21 Kingland Road, POOLE, BH15 1UG. 7.45pm. 01202 280000 / lighthousepoole.co.uk. "An electrifying re-imagining of the ultimate love triangle."



Spilt Milk Dance: Desert Island Flicks

"Two leading ladies reimagine, remake and spoof the most memorable movie moments of all time, taking on all the lead roles, stunts, and special effects!"

7 October: Jubilee Hall, YETMINSTER, DT9 6LQ. 7.30pm. £12 / £5. 01935 873546 / artsreach.co.uk.

8 October: Village Hall, WINFRITH, DT2 8JR. 7.30pm. £12 / £5. 01305 853783 / artsreach.co.uk.

'EMERALD STORM'

4 October

Lighthouse, 21 Kingland Road, POOLE, BH15 1UG. 7.45pm. 01202 280000 / lighthousepoole.co.uk. "The new Irish dance sensation"

'THE ALCHEMIST'

4 - 7 October

Rondo Theatre, St Saviour's Road, Larkhall, BATH, BA2 6RT. 7pm. £14. 03336 663366 / rondotheatre.co.uk. "Ben Jonson's classic farce gets the Victorian treatment from Bath Drama in this absurd comedy."

ANDREW BIRD: 'TAKEN SERIOUSLY'

5 and 6 October

Lighthouse, 21 Kingland Road, POOLE, BH15 1UG. 8pm. lighthousepoole.co.uk. Comedy.

PAUL ZERDIN: 'PUPPETMAN'

6 October

Lighthouse, 21 Kingland Road, POOLE, BH15 1UG. 7.45pm. 01202 280000 / lighthousepoole.co.uk. "The America's Got Talent winner is back with a brand-new comedy show and an array of sharp-tongued creations."

'PRIMROSE WAY'

7 October

Taunton Brewhouse, Coal Orchard, TAUNTON, TA1 1JL. 7.45pm. £12. tauntonbrewhouse.co.uk.

'IT IS I, SEAGULL'

7 October

Lighthouse, 21 Kingland Road, POOLE, BH15 1UG. 8pm. 01202 280000 / lighthousepoole.co.uk. "Inspired by the stories of Valentina Tereshkova (first woman in space) and Valentina Ponomaryova (almost the first woman in space), this is a hilarious and brutally honest exploration of self-esteem, joy, failure, opera and space travel."

NIKKI RUMMER: 'UNBROKEN'

7 October

Village Hall, ROADWATER, TA23 0RE. 7.30pm. £10 / £6. 07745 318486 / takeart.org. "A one-woman show about family, betrayal and the freedom to stand alone."

'SPEED DIAL'

10 October

Taunton Brewhouse, Coal Orchard, TAUNTON, TA1 1JL. 7.30pm. £17.50 / £15.50. tauntonbrewhouse.co.uk. "Physical comedy-thriller."

'NOISES OFF'

10 - 14 October

Lighthouse, 21 Kingland Road, POOLE, BH15 1UG. Tuesday - Saturday 7.30pm (Wednesday, Thursday and Saturday matinees 2.30pm). lighthousepoole.co.uk. "Michael Frayn's celebrated play serves up a riotous double bill, a play within a play."

CARL HUTCHINSON

12 October

Lighthouse, 21 Kingland Road, POOLE, BH15 1UG. 8pm. lighthousepoole.co.uk. Comedy.

'TIGER LADY'

12 October

Mowlem Theatre, SWANAGE, BH19 1DD. 7.30pm. £12 / £6. 01929 422239 / artsreach.co.uk. "The crowd loved her! The men loved her! The tigers loved her! Hear the tale of America's most ferocious big cats' tamer and discover how the scars on her body were not as deep as the scars on her heart..."



Shaftesbury Arts Centre



'Aftersun' (12A)

Film

8 September, 8pm



'Shadowing Hank'

Justin Daish "biggest smallest show in the world"
23 September, 7.30pm



Will Page

Folk singer songwriter
7 October, 7.30pm



Moirra Ladd

Paintings

Ron Homes Gallery
18 - 24 October



'Nosferatu'

Silent film with new musical score performed live
29 October, 7.30pm

11 - 13 Bell Street, Shaftesbury, Dorset SP7 8AR 01747 854321 • shaftesburyartscentre.org.uk



Platform 4: Triffids!

"Meteors! Killer plants! Movies! This remarkable collision of music, text and visual imagery takes the audience deep into John Wyndham's classic cold war novel: *The Day of the Triffids*."

6 October: The Pound Arts Centre, Pound Pill, CORSHAM, SN13 9HX. 7.30pm. £14. 01249 701628 / poundarts.org.uk

DAVID MYNNE: 'CANTERBURY TALES'

13 October

Village Hall, PIDDLTRENTHIDE, DT2 7QF. 7.30pm. £12 / £5. 07786 880676 / artsreach.co.uk. "It's rude! It's ribald! It's ridiculous! Let's party like it's 1387! This is Chaucer... but not as you think you know it!"

CHRIS MCCAUSLAND

13 and 14 October

The Pound Arts Centre, Pound Pill, CORSHAM, SN13 9HX. 8pm. £14. poundarts.org.uk. Comedy.

DAVID MYNNE: 'CANTERBURY TALES'

14 October

Village Hall, CORFE CASTLE, BH20 5EE. 7.30pm. £12 / £5. 07590 352219 / artsreach.co.uk. See 13 October.

DAVID MYNNE: 'CANTERBURY TALES'

14 October

Village Hall, WOOTTON FITZPAINE, DT6 6NF. 7.30pm. £12 / £5. 01297 560948 / artsreach.co.uk. See 13 October.

'TWO GENTLEMEN OF VERONA'

14 October

The Cause, 42 The Causeway, CHIPPENHAM, SN15 3DD. 7.30pm. £14. 07780 938107 / shakespearelive.com. "Feisty heroines, lovelorn and bickering young men, dictatorial parents, foolish suitors, cross-dressing, letters galore, wild outlaws, witty servants, fights, and a lugubrious clown with a dog - fast, furious comedy from Shakespeare Live."



'STORIES IN THE DUST'

14 October

Lighthouse, 21 Kingland Road, POOLE, BH15 1UG. 11am and 2pm. 01202 280000 / lighthousepoole.co.uk. "Funny, heartfelt, post apocalyptic family show that takes you to another world."

SEAN COLLINS + ALAN COLLINS + SANDI SMITH

14 October

Lighthouse, 21 Kingland Road, POOLE, BH15 1UG. 8pm. lighthousepoole.co.uk. Comedy.

'TWO GENTLEMEN OF VERONA'

15 October

The Merlin Theatre, Bath Road, FROME, BA11 2HG. 7.30pm. £14. 07780 938107. See 14 October.

TAVAZIA DANCE: 'BOY'S KHAYA'

17 October

Lighthouse, 21 Kingland Road, POOLE, BH15 1UG. 7.45pm. 01202 280000 / lighthousepoole.co.uk.

'TWO GENTLEMEN OF VERONA'

17 and 18 October

The Mission Theatre, 32 Corn Street, BATH, BA1 1UF. 7.30pm. £14. 07780 938107. See 14 October.



'HAGS: A MAGICAL EXTRAVAGANZA'

18 October

School Theatre, GILLINGHAM, SP8 4QR. 7.30pm. £12 / £5. 01747 213203 / artsreach.co.uk

'HAGS: A MAGICAL EXTRAVAGANZA'

19 October

Village Hall, HALSTOCK, BA22 9SG. 7.30pm. £12 / £5. 01935 83347 / artsreach.co.uk.

'TWO GENTLEMEN OF VERONA'

19 October

The Town Hall, 65 High Street, CORSHAM, SN13 0EZ. 7.30pm. £14. 07780 938107 / shakespearelive.com.. See 14 October.

'TWO GENTLEMEN OF VERONA'

20 October

Marden House Centre, New Road, CALNE, SN11 0JJ. 7.30pm. £14. shakespearelive.com. See 14 October.

Let's get creative!

At Aztec Media, we offer tailored creative services for artists, galleries, and art venues, including web design, graphic design, photography, and social media campaigns. Our expertise helps clients stand out in a competitive landscape while allowing them to focus on what they do best - being creative.



WEB DESIGN // GRAPHIC DESIGN // PRINT
PHOTOGRAPHY // SOCIAL MEDIA // SEO

01935 477 073 | aztec.media

Performance



Bowjangles: Dracula in Space

"Forget everything you think you know about string quartets and get ready for a Halloween horror musical comedy from the internationally acclaimed Bowjangles quartet."

27 October: Holford and District Village Hall, HOLFORD, TA5 1SD. 7.30pm. £11 / £8. 07843 348057 / takeart.org.

28 October: Bruton Club, BRUTON, BA10 0HQ. 7.30pm. £12 / £8. takeart.org.

'THE VARNISHING DAYS'

20 October

Lighthouse, 21 Kingland Road, POOLE, BH15 1UG. 8pm. 01202 280000 / lighthousepoole.co.uk.

"The heart-stopping, glasses-dropping, hard-rocking, wig-shaking, levothyroxine-taking, knee-knocking, boot-licking, justifying, teeth rattling, digressing new show from stand up comedian to the stars John Kearns."

OPA ROSA

21 October

Village Hall, CHILTHORNE DOMER, BA22 8RD. 7pm. £10. 07951 470104 / takeart.org. See 15 September.

'BABBLE'

23 October

The Pound Arts Centre, Pound Pill, CORSHAM, SN13 9HX. 10.30am, 12.30 and 2.30pm. £8. 01249 701628 / poundarts.org.uk. *"Mik and Kin are Sound Collectors. Boxes of their favourite sounds have been checked, all ready to take home. But the boxes are not behaving and are causing chaos!"*

'STORIES IN THE DUST'

24 October

The Pound Arts Centre, Pound Pill, CORSHAM, SN13 9HX. 11am and 2pm. £8. 01249 701628 / poundarts.org.uk. See 14 October.

'A MIDSUMMER NIGHT'S DREAM'

24 October

Lighthouse, 21 Kingland Road, POOLE, BH15 1UG. 11am and 2pm. 01202 280000 / lighthousepoole.co.uk. *"Norwich Puppet Theatre's sideways take on Shakespeare's classic play."*

'JOURNEY TO THE STARS'

25 October

The Corn Exchange, High East Street, DORCHESTER, DT1 1HF. 11am. £10 / £8. 01305 266926 / dorchesterarts.org.uk.

'THE SOOTY SHOW'

25 October

Lighthouse, 21 Kingland Road, POOLE, BH15 1UG. 2.30pm. 01202 280000 / lighthousepoole.co.uk.

CLAIRE BENSON: 'PLASTIC PARADISO'

27 October

The Pound Arts Centre, Pound Pill, CORSHAM, SN13 9HX. 11am and 2pm. £8. 01249 701628 / poundarts.org.uk. *"Dance theatre show for children."*



JENNY ECLAIR

27 October

Lighthouse, 21 Kingland Road, POOLE, BH15 1UG. 7.45pm. 01202 280000 / lighthousepoole.co.uk. Comedy.

'A MATTER OF TIME'

27 October

Taunton Brewhouse, Coal Orchard, TAUNTON, TA1 1JL. 7.30pm. £15.50 / £13.50. 01823 283244 / tauntonbrewhouse.co.uk. *"Mesmerising dance triple bill."*

take art

Rural

Touring

EXTRAORDINARY PERFORMANCES IN ORDINARY PLACES

Look for Take Art events in the listings pages!

EVOLVER MAGAZINE

DEADLINE FOR NEXT ISSUE

November and December 2023

SATURDAY 7 OCTOBER

ARTCETERA

EST. 1970

Picture Framing
& Artists Materials

01202 423408 artcetera853@gmail.com 853 Christchurch Road BH7 6AR

WESSEX



SATURDAY 7 OCTOBER

Outlets and Sponsors

EVOLVER MAGAZINE is available **FREE** at the following Wessex outlets:

ABBOTSBURY: Abbotsbury Studio, Dansel Gallery. AXMINSTER: Archway Bookshop, Axminster Arts Café, Sublyme Café. BATH: Bath Artists' Studios, Beaux Arts, The Bell Inn, The Edge / ICIA, Holburne Museum of Art, Michael Tippett Centre, University of Bath, Victoria Art Gallery. BEAMINSTER: Little Toller Books. BLANDFORD: Blandford Fashion Museum, Bryanston Arts Centre, Forum Café, Forum Framers. BOSCOMBE: Artcetera. BOURNEMOUTH: All Fired Up, Miramar Hotel, Pavilion Dance, Royal Bath Hotel, Russell-Cotes Museum & Art Gallery. BOWER HINTON: The Hollies Hotel. BRADFORD ON AVON: Wiltshire Music Centre. BRIDGWATER: Bridgwater Arts Centre, Engine Room. BRIDPORT: Art Unlimited, Bridport Arts Centre, Bridport Old Books, The Bull Hotel, Clocktower Records, Literary and Scientific Institute, Lyric Theatre, Mangerton Mill. BRISTOL: Arnolfini, Bocabar, The Bristol Artisan, Bristol Beacon, Bristol Fine Art, Centrespace, Clifton Fine Art, Create Centre, Folk House, Jamaica Street Artists, Lime Tree Gallery, Bristol Old Vic, PRSC Gallery, RWA, Spike Island, St George's, Tobacco Factory, Trinity Centre, UWE, Watershed. BROADWINDSOR: Redlands Yard. BRUTON: At The Chapel, Hauser and Wirth. BUDLEIGH SALTERTON: Brook Gallery. BURNHAM ON SEA: Princess Theatre & Arts Centre, Seabreeze Gallery. CASTLE CARY: Bailey Hill Bookshop, David Simon Gallery, Trowbridge Gallery. CHARD: Art Café, Barleymow's, Hornsbury Mill Hotel. CHARLTON: Glebe Gallery. CHARMINSTER: Flux Art Supplies. CHEDDAR: Cheddar Art School, Sketch Café. CHEDDON FITZPAINE: Hestercombe Gallery. CHESIL BEACH: Fine Foundation Centre. CHIPPENHAM: Chippenham Museum. CHRISTCHURCH: Hatch Gallery, Hayloft Gallery, Red House Museum, Regent Centre. CLEVEDON: Fizz Gallery, Studio 3. CORFE CASTLE: Boilerhouse Gallery, Gallery 41, Morton House Hotel, Village Stores. CORSHAM: Pound Arts. CREWKERNE: Art4All / ArtyCrafty. CROCKERTON: Bull Mill Arts. CROWCOMBE: Halsway Manor. CULLOMPTON: Cullompton Community College. CULMSTOCK: The Strand Stores. DEVIZES: Wiltshire Museum. DORCHESTER: Dorchester Arts, Duke's, Frank Herring & Sons, Gallery on The Square, The Little Keep, Vinyl Van. EAST LAMBROOK: East Lambrook Manor Gardens. EXETER: Academy of Music, Barnfield Theatre, The Cavern, Corn Exchange, Exeter School of Art, Glorious Art Cafe, Phoenix Arts Centre, Royal Albert Memorial Museum, Southgate Gallery. FROME: Bat Print Studio, Black Swan Arts, Cheese and Grain, Fiat Lux, Merlin Theatre, Mount, Raves From The Grave, Rook Lane Arts, Rise Centre, Whittox Gallery. GILLINGHAM: The Idea Works, Slade Centre. GLASTONBURY: Abbey Muse

Gallery, Bocabar, Facets Of Avalon, Glastonbury Galleries, Heart Of The Tribe Gallery, Red Brick Building, Rural Life Museum. HEMYOCK: Healthy Living Centre. HESTERCOMBE: Hestercombe Gallery. HIGHCLIFFE: In The Frame. HOLTEN HEATH: Holton Lee. HONITON: The Beehive, Boston Tea Party, Hybrid Gallery, School Of Art And Wellbeing, Strummer Pink, Thelma Hulbert Gallery. ILMINSTER: Courtyard Gallery Cafe, Dillington House, Ilminster Arts Centre. KEYNSHAM: Chocolate Quarter. LANGPORT: 4 Every Cloud, Art Tea Zen, Hanging Gallery, Shakspeare Glass. LYME REGIS: Blue Lias, Coombe Street Gallery, Fine Art Framing, Marine Theatre, Studio 19. LYTCHETT MINSTER: Barn Cafe, Courtyard Craft Centre. MARLBOROUGH: Framemakers, Rabley Contemporary Drawing Centre. MARTOCK: Martock Gallery Yandles Cafe. MILTON ABBAS: Dorset Crafty Barn, Luccombe Hub. MINEHEAD: Courtyard Framing, Leo Davey Gallery, Regal Theatre. MORCOMBELAKE: Artwave West. MUCHELNEY: John Leach Gallery. NEW MILTON: Forest Arts. NEWTOWN: R. C Arts. NORTH CURRY: Community Café. OTTERTON: Otterton Mill. PENN HILL: Josephine Wall Shop. PEWSEY: McNeill Gallery. POOLE: Arts University Bournemouth, Boiler Room Records, Bournemouth University Atrium Gallery, Guildhall Gallery, Lighthouse, Gallery Upstairs, Originals, Poole Museum, Poole Violins, Towngate Gallery And Framing. PORLOCK: Churchgate Gallery, Melody Art. PORTLAND: B-Side Outpost, White Stones. POUNDBURY: Gallery On The Square, Store 6. SALISBURY: City Hall, Fisherton Mill, Framemakers, Noble Art Supplies, Salisbury Arts Centre, Salisbury Museum, Salisbury Playhouse, Studio 53, Wiltshire Gallery, Young Gallery. SEATON: Arts Café, Savooni Art Gallery. SEAVINGTON: Village Shop. SHAFTESBURY: The Cygnet, Grosvenor Hotel, Pictureframes, Shaftesbury Arts Centre. SHEPTON MALLET: One Craft Gallery. SHERBORNE: Artslink, Elementum Gallery, New Digby Hall, Old Barn Framing Gallery, Winstone's. SIDMOUTH: East Devon Art Academy, Flo and Us, Kennaway House, Winstone's. SOMERTON: ACE Arts, Gifted Company & Gallery Coffee Shop. SOUTH CADBURY: Chapel Cross Tea Rooms. SOUTH PETHERTON: David Hall. STALBRIDGE: Dike & Sons. STOBOROUGH: Furzebrook Studios. STOKE ST GREGORY: Willow & Wetlands Centre. STOURHEAD: First View Gallery. STREET: Millfield School Atkinson Gallery, Strode Theatre. STURMINSTER NEWTON: The Exchange, Poet's Corner, Wessex Photographic. SWANAGE: 4Matt Framers and Gallery, Durlston Castle, Hollinghead Studio Gallery, L'Artishe Gallery, Mowlem Theatre, Mulberry Bush Gallery, Purbeck New Wave Gallery, Quarr Gallery, Sansom Gallery. SYMONDSBURY: Sou'-Sou'-

West. TAUNTON: Brewhouse Theatre, CIC CIC, Fine Art And Framing, Jane Amour, Mount Somerset Hotel, Quantock Art And Framing, Queen's College, Tacchi-Morris Arts Centre, University Centre Somerset. TINCLETON: Tincleton Gallery. TISBURY: Messums Wiltshire. TIVERTON: Lantic Gallery. TROWBRIDGE: Arc Theatre, Court Street Gallery, Drawing Projects, The Lamb, Trowbridge Museum. VERWOOD: Campbell & Rose Gallery, The Hub. WAREHAM: Creative Gallery, Priory Hotel, Rex Cinema. WATCHET: East Quay, Watchet Gallery. WELLINGTON: Old Brick Workshop. WELLS: A2 Gallery, Andelli Art, Bishop's Eye, Good Earth, Heritage Courtyard Studios, Somerset Guild of Craftsmen Gallery and Shop. WEST BAY: Sladers Yard. WEST COKER: Lanes, Old School Room. WESTHAY: Somerset Crafts. WESTON-SUPER-MARE: Frame Station, Playhouse, Weston College. WEYMOUTH: Weymouth College, Weymouth Pavilion. WILLITON: Breeze Art Gallery. WIMBORNE: Allendale House, Square Records, Walford Mill Craft Centre. WINSCOMBE: Sidcot Arts Studio. WIVELISCOMBE: Community Office. WOODBURY: Woodbury Studio Gallery. WORTH MATRAVERS: Burngate Stone Centre. WRINGTON: Barleywood Studios. YEOVIL: Octagon Theatre, Yeovil Art Space. YETMINSTER: Old School Gallery.

Plus selected TOURIST INFORMATION CENTRES and LIBRARIES throughout Wessex

EVOLVER SPONSORS

ACE Arts
Acoustic Distribution
Artcetera
Aztec Media
B-Side
Black Swan Arts
Boilerhouse Gallery
Bridport Arts Centre
Close Ltd
The Creative Gallery
Dorset Visual Arts
East Quay
Gallery on the Square
Heart of the Tribe Gallery
Lyme Bay Arts
Shaftesbury Arts Centre
The Slade Centre
Sladers Yard
Somerset Art Works
Southern Contemporaries
Tincleton Gallery
The Vanner Gallery
Walford Mill
Yeovil Art Space

Our **EVOLVER SPONSORS** make Evolver Magazine possible. We couldn't do it without their ongoing support and advertising, so we make sure they get priority coverage in these pages.

If you'd like to join them, please email simon@evolver.org.uk to find out about our Sponsorship offer (for example our quarter page Evolver Sponsors pay £175 instead of £250 for each bi-monthly advert).

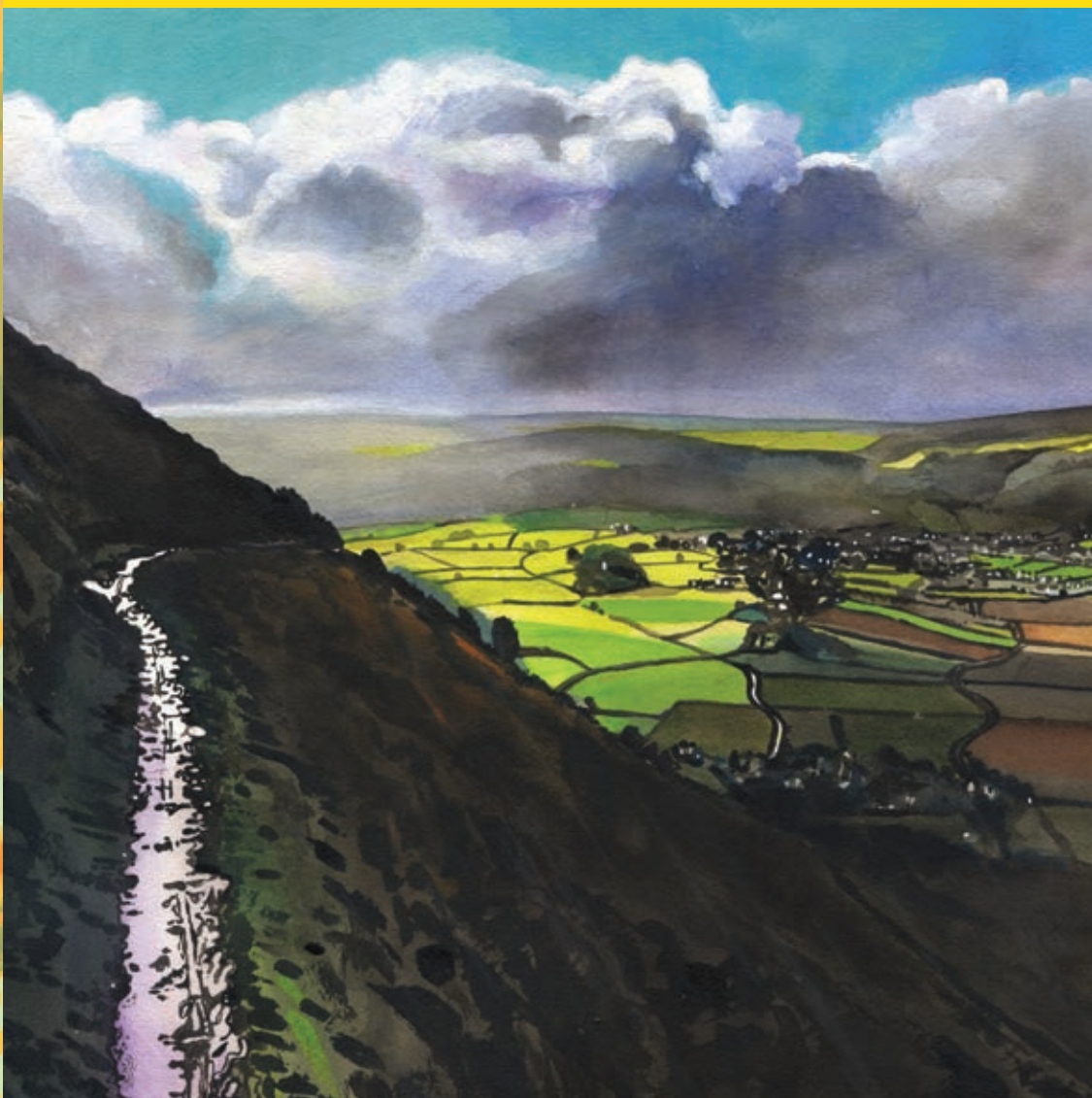


THE SOMERSET ART MAP



EVOLVER
ARTS
AND
CULTURE
MAP

No. 2 in a series



COMING SOON! THE SECOND EVOLVER ARTS AND CULTURE MAP