

EVOLVER MAGAZINE

THE **FREE** WESSEX ARTS AND CULTURE GUIDE



OUT NOW!

THE SOMERSET ART MAP

EM
EVOLVER
ARTS
AND
CULTURE
MAP

No. 2 in a series



VISIT Somerset
((acoustic))
DISTRIBUTION

Paintings by Leo Davey

Tuesday to Sunday
11am to 6pm
Free, donations welcome

21 October 2023 —
18 February 2024

ELIAS SIME EREGATA 𐌿𐌺𐌹𐌸

ARNOLFINI
EST. 1961

16 NARROW QUAY BRISTOL BS1 4QA
@arnolfiniarts arnolfini.org.uk



GRIMM

James
Cohan



Supported using public funding by
ARTS COUNCIL
ENGLAND

ACBMT
Arts Council Bristol Museum & Art Gallery

UWE
Bristol
University of the West of England

Elias Sime — *Tightrope: It's Green & (detail)* (2023). Courtesy of the artist and James Cohan Gallery. Photo by Phoebe d'Hourio.

EVOLVER MAGAZINE 134

November and December 2023



Exhibit A

Liz Caires: Ancestral Goddess

Acrylics on canvas - 76cm x 61cm

ARTIST'S STATEMENT: "My recent pieces depict women of the world using a distinct palette of bright colours and expressive energy to portray their features, forms, thoughts and emotions. These creations embody a feeling of inner growth and a spiritual connection to the universe for me. As an artist my role is to create something timeless for the viewer. Images arise as an intuitive improvisation of ideas, dependent entirely on what I choose to express in any particular moment in life. Through the relationship of colours, and shapes, rhythm and balance and the physical as well as the psychological act of painting, each picture develops into a unique piece to capture a corner of the wonder and the beauty of people and nature and the world I live in."

'ANCESTORS'

10 - 25 November: Guggleton Farm, Station Road, STALBRIDGE, Sturminster Newton, DT10 2RQ. Tuesday - Saturday 11am - 3pm. 01963 363456 / guggletonfarmarts.com.





CHRISTMAS SHOP • FAMILY ACTIVITIES

Unit 23 • Members Space and Studios



LIGHT HEARTED • DIGITAL FUNFAIR

Unit 13 - 15 • Gallery and Shop

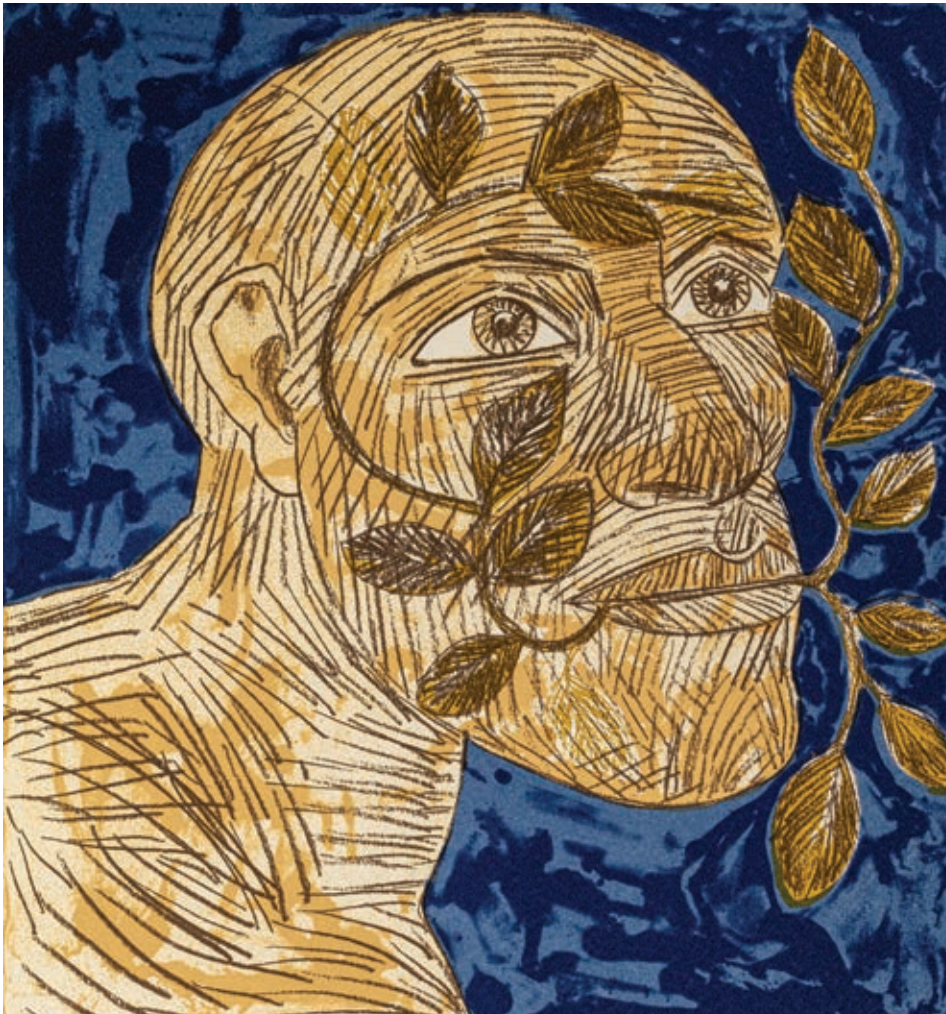
Vicarage Walk, Quedam Shopping Centre, Yeovil, Somerset BA20 1EU
yeovilartspace.uk   @YeovilArtSpace

 **YEOVIL
ART SPACE**

Headlines

November and December 2023

Dorset Museum collection 2020.1173. Artist copyright in image kindly approved by Tully and Bree Jammet



'GREEN MAN (BLUE)' (1992)

Elisabeth Frink: A View From Within

December sees the opening of a major Frink exhibition at the Dorset Museum & Art Gallery.

Coinciding with the 30th anniversary of her death, *Elisabeth Frink: A View from Within* will be the first exhibition to focus on work produced at her Woolland studio in Dorset between 1976 and 1993. It will explore her artistic process, personal life

and the profound influences that shaped her work; human conflict and our relationship with the natural world.

Arranged thematically, the exhibition will lead us from her personal and artistic life at Woolland to a recreation of her studio, Frink's creative methods will be explained, along with insights into her artistic vision. Through her sculptures the exhibition will

explore her intimate connection with the natural environment, the contemplation of human-animal interdependence, spirituality and humanist beliefs, her dedication to human rights advocacy, and finally her enduring legacy.

In 2020 Dorset Museum acquired over 300 works from the Elisabeth Frink Estate featuring sculptures, prints, drawings, and personal possessions. Many of these items, including working plasters that formed the basis of Frink's bronze sculptures, will be on public show for the first time. As seen on the recent BBC television programme *Fake or Fortune*, Dorset Museum is the nationally recognised authority on Frink.

As well as items from the Museum's collection, the exhibition will include personal papers and photographs from the Dorset History Centre, and large-scale sculptures from Yorkshire Sculpture Park and The Ingram Collection of Modern British and Contemporary Art. There will also be educational workshops, events and talks running alongside the exhibition. It was the wish of her late son, Lin Jammet, that the entire Frink Estate and Archive be given to the nation, ensuring that Frink's vision of sharing her artwork was achieved. This exhibition honours this, ensuring that Dorset plays a significant role in her artistic legacy.

Elizabeth Selby, Director of Collections at Dorset Museum, says: "Elisabeth Frink was an extraordinary artist who explored what it meant to be human through her work. This exhibition will portray Frink in a more intimate light, revealing her inner world and the major themes she explored in her sculpture, prints and drawings."

2 December - 21 April: Dorset Museum & Art Gallery, High West Street, DORCHESTER, DT1 1XA. Monday - Saturday 9am - 4.30pm, Sunday 10am - 4pm. £14. 01305 262735 / dorsetmuseum.org.



James Budden



Bespoke framing • Wide range of frames to choose from
Expert help and friendly advice • Art gallery • Original fine art prints
Championing local and national artists

5 LYNDEN WAY • BEAMINSTER • DORSET DT8 3AX
Tel: 01308 800693 • Email: info@artandbeyond.co.uk

Headlines



PHILIPPA BEALE



TIM CRAVEN



DAVID WISEMAN 'IN THE BLUEBELL WOODS, PERIVALE' (Acrylic on canvas, 56 x 44 cm)

The Arborealists: Tree of Life

Trees provide a wonderfully versatile subject for artists, not only in terms of the rich variety of form, texture and colour they provide, whether individually or collectively, but also through the wealth of association - myth, folklore, religious and symbolic significance, that they have come to embody over many centuries. In Britain, trees as a subject have a strong legacy in art history and have inspired artists from Gainsborough, Turner and Constable through to the Pre-Raphaelites, the Neo-Romantics, the Land Artists and the Ruralists. Piet Mondrian and Victor Pasmore used the tree as a device to turn abstract and Paul Nash famously stated that he loved and worshipped trees and believed they were people.

The Arborealists were founded in 2013 by artist and curator Tim Craven and are now a formal association of 50 professional artists of diverse art practice who share the subject of the tree. Although united by their subject, the artists employ a diverse range of working practices including scale, medium, philosophy, style and technique. The results are by turn dramatic and contemplative, expressive, abstracted, hyperreal and surreal and they demonstrate that trees still have a deep relevance in contemporary art and retain their power to move us as a vital element in our landscape.

Many museums and galleries are now staging exhibitions on climate crisis and ecology subjects of which the tree is a powerful symbol as the lungs of the

planet. The Arborealists were ahead of the curve and the group enjoys a national profile having already staged 35 exhibitions to acclaim in the UK and abroad with many more planned for the future, including site-specific projects. They have also produced 8 illustrated publications to date to compliment the exhibitions.

This new exhibition at ACE Arts features paintings, prints and drawings by 24 Arborealists' members and associates, each represented by one work.

18 November - 23 December: ACE Arts, Market Place, SOMERTON, TA11 7NB.
Tuesday - Saturday 10am - 5pm. 01458 273008 / acearts.co.uk.

Calling all Dorset artists, designers, makers, curators and galleries

Become a member of **DORSET VISUAL ARTS** or renew your membership at **dorsetvisualarts.org**

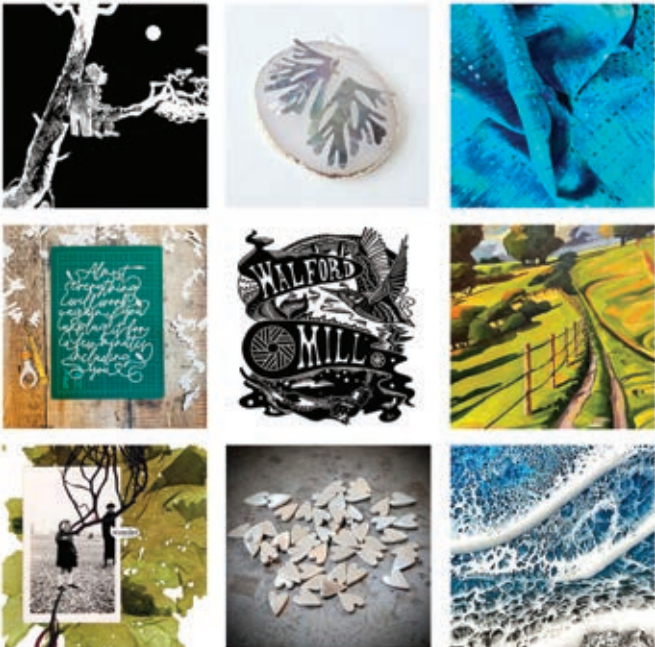
Full details of our revamped membership options and benefits can be found on the DVA website



Calling all Dorset artists, designers, makers, curators and galleries

Sign up for **DORSET ART WEEKS 2024** from 1 November at **dorsetartweeks.co.uk**

Applications close 7 January 2024. Full registration guidelines can be found on the Dorset Art Weeks website



WALFORD MILL

Contemporary art and craft gallery in a spectacular 16th Century Mill

**EXHIBITIONS | ADULT AND CHILDREN'S WORKSHOPS
OPEN STUDIOS | INDEPENDENT SHOPS
COURTYARD MARKETS | CAFE**

OPEN - WEDS - SAT 10-5PM - SUN 11-4PM
Knobcrook Road, Wimborne, Dorset, BH21 1NL
www.walfordmillcrafts.co.uk
@walfordmill

Tincleton Gallery

contemporary fine art in Dorset

Autumn exhibition

gallery & guest artists

Fri 8 Sep 2023 - Fri 5 Jan 2024



"The old boatyard, Cremyll, Cornwall" by Kim Pragnell

The Old School House, Tincleton, near Dorchester, DT2 8QR

Friday / Saturday / Sunday / Monday • 10am – 4pm

01305 848909 • tincletongallery.com



HANDMADE FOR CHRISTMAS #12

9 NOV - 24 DEC 2023

A DELICIOUS SLICE OF
CHRISTMAS SHOPPING HEAVEN

A glorious mix of unique and
beautiful gifts from
local designers,
artists and
makers

open
9.30-4.30
every day

THE WORKHOUSE CHAPEL
Bath Road, Sturminster Newton
DT10 1DS
workhousechapel.co.uk

EVOLVER MAGAZINE FREE LISTINGS

Exhibition and performance listings should be
emailed to listings@evolver.org.uk

Please send ALL information in the following order:

Event, date(s), venue, address (including postcode),
times, admission fee (if any), contact number /
website, up to 30 words about your event



hanging service
exhibitions
classes
curation
space hire



professional and personal service
- EST -
2012

www.studio53space.co.uk

07967186956

Headlines



MARTYN BREWSTER 'TROPICAL NIGHTS'
(110 x 90 cm)

Radiance

A celebration of light in the landscape, this exhibition contrasts the distilled sophistication of Alex Lowery's bright new paintings, the painterly natural gusto of Louise Balaam's wild open spaces and Martyn Brewster's deeply felt abstracted landscapes.

On the ground floor we present works by some of our most popular artists including Vanessa Gardiner, Julian Bailey and Frances Hatch, from perfect small presents to thrilling major works.

Petter Southall's work includes a new refectory table exploring beautiful simple shapes and natural textures.

Ceramics, sculpture, textiles, books, prints and accessories by leading designers and makers will be constantly renewed to keep a lively and vibrant display.

18 November - 20 January: Sladers Yard, WEST BAY, Bridport, DT6 4EL. Monday - Saturday 10am - 4.30pm. 01308 459511 / sladersyard.co.uk.



The Somerset Art Map

The Somerset Art Map features the network of galleries, venues, organisations, businesses and artists making the Arts happen in the county, and is the second in a series of county art maps to be published by Evolver. Building on the success of Evolver Magazine and the Evolver Prize, this new initiative was kicked off with a YES PLEASE from all Evolver Sponsors in Somerset, and following a promotional campaign throughout the summer, the wider community of arts movers and shakers in the county signed up.

The Evolver team will soon be starting work on The Wiltshire Art Map, due for publication in Spring 2024, with The Devon Art Map to follow in Autumn 2024, and The Avon Art Map in Spring 2025. Each map will be updated every year.

Minehead-based artist Leo Davey (Winner of the Evolver Prize in 2010 and 2020) was commissioned to paint a Wessex map and produce front cover illustrations for each map in the series.

The Somerset Art Map has been made possible by all Evolver Sponsors in Somerset: ACE Arts, Black Swan Arts, Close Ltd, East Quay, Heart of the Tribe Gallery, Somerset Art Works, and Yeovil Art Space.

If you would like a copy of The Somerset Art Map (or The Dorset Art Map, we still have a few copies left) and can't pick up a copy at one of our Evolver outlets in Somerset (and surrounding 20 miles) please send a C5 (A5) stamped addressed envelope to: Evolver Art Maps, Evolver Media, 8 Buckland Road, Pen Mill Trading Estate, Yeovil, Somerset BA21 5EA.

And if you are making the Arts happen in Wiltshire, please email simon@evolver.org.uk to book your place on The Wiltshire Art Map.

Vessels

Curated by Jacqueline Creswell

3 Nov - 23 Dec

The Vanner Gallery
45 High Street
Salisbury
01722 501 551
10am - 5pm Tuesday to Saturday
vannergallery.com



Visual Arts

November and December 2023



'STORMY EGGARDON 2' (Oil on canvas, 120 x 40 cm)

Kit Glaisyer: West Dorset Paintings

"These two exhibitions offer a captivating journey through Kit Glaisyer's lifelong connection to the region, presenting a series of large oil paintings up to 10-foot wide that vividly capture the very essence of West Dorset. Born in a small village in the Blackmore Vale, Glaisyer learned 'en plein air' painting alongside his artistic father, strongly inspired by the expressive watercolours of John Sell Cotman and JMW Turner. An art scholarship at Sherborne School led to formative art trips and exposure to the great museums and galleries across Europe, with influences from Cézanne and the Post-Impressionists sparking his exploration of paint's tactile nature. Following art college in Bournemouth and Farnham, Glaisyer moved to London, where an encounter with a Gerhard Richter exhibition led him on a journey into abstract art that transformed his approach, and then further enriched his landscape painting upon returning to Dorset five years later.

His painting process begins with an Impressionist touch, capturing the immediacy of a fleeting moment. He then methodically applies thin paint layers over several weeks or months, creating vibrant tapestries of light and colour, a patient approach to painting that harks back to 19th-century European Romantic artists and the American Hudson River School. In *West Dorset Paintings*, Glaisyer offers a moving visual journey, mixing a lively contemporary exuberance with a steadfast devotion and deep connection to the venerable traditions of art."

22 - 26 November: Jubilee Hall, POUNDBURY, DT1 3BW. 10am - 6pm. 07983 465789 / kitglaisyer.com.

Until 31 December: Bridport Contemporary, 11 Downes Street, BRIDPORT, DT6 3JR. Wednesday and Saturday 10am - 4pm. 07983 465789 / kitglaisyer.com.

HUBERT LANCASTER HARCOURT Until 4 November

Pound Arts, Pound Pill, CORSHAM, SN13 9HX. Monday - Saturday 10am - 9.30pm. poundarts.org.uk. "Hubert Lancaster Harcourt was a commercial artist who also painted scenes of his time as a corporal in the Pioneer Corps during World War II. This exhibition brings together his extraordinarily evocative sketches, watercolours and paintings."

PAULINE SCOTT-GARRETT: 'UNDERTOW'

Until 5 November
The Whittox Gallery, RISE, Whittox Lane, FROME, BA11 3BY. Tuesday - Saturday 9am - 4pm, Sunday 10am - 4pm. thewhittoxgallery.com.

'EVER PRESENT' Until 5 November

Malthouse Gallery, Town Mill Courtyard, LYME REGIS, DT7 3PU. 10am - 5pm. 07811 102216 / alisonsheltonbrown.art.

'AUTUMN EXHIBITION' Until 5 January

Tincleton Gallery, The Old School House, TINCLETON, near Dorchester, DT2 8QR. Friday - Monday 10am - 4pm. 01305 848909 / tincletongallery.com.

'DRAWING'

Until 5 November
Sou'-Sou'-West Arts Gallery, Symonds Estate, BRIDPORT, DT6 6HG. 10.30am - 4.30pm. 01308 301326 / sousouwest.co.uk.

SOMERSET PRINTMAKERS Until 6 November

Heart of The Tribe Gallery, 74 High Street, GLASTONBURY, BA6 9DZ. Thursday - Monday 11am - 5pm. 01458 832167 / heartofthetribe.com.

ANDREA JENKINS: 'PROGRESS REPORT'

Until 7 November
The Gallery, Shaftesbury Arts Centre, Bell Street, SHAFTESBURY, SP7 8AR. Monday - Saturday 10am - 4pm. shaftesburyartscentre.org.uk.

WINTER MARKET.



CERAMICS * PRINTS * JEWELLERY * MORE

4.11.23 — 31.12.23

galleries | studios | shop | cafe
2 Bridge Street, Frome BA11 1BB

 **BLACKSWANARTS**

01373 473980 | www.blackswanarts.org.uk
FREE ENTRY · Registered Charity No. 292463

Visual Arts

THE SECRET POSTCARD AUCTION Until 9 November

Royal West of England Academy, Queen's Road, Clifton, BRISTOL, BS8 1PX. Tuesday - Sunday 10am - 5pm. £8.90. rwa.org.uk. "Your chance to place the winning bid on a mini-masterpiece by a leading figure in the art world. Bidding starts at just £40."

'ACE ARTS OPEN 23'

Until 11 November

ACE Arts, Market Place, SOMERTON, TA11 7NB. Tuesday - Saturday 10am - 5pm. acearts.co.uk. "Over 100 selected works."

MARZIA COLONNA AND FIAMMA COLONNA MONTAGU: 'MANY MOONS'

Until 11 November

Sladers Yard, WEST BAY, Bridport, DT6 4EL. Wednesday - Saturday 10am - 4.30pm. sladersyard.co.uk.

'BEST OF DORSET'

Until 21 November

Hatch Gallery, 7a Church Street, CHRISTCHURCH, BH23 1BW. Tuesday - Saturday 11am - 4pm. 07787 517958 / hatchgallery.co.uk. "Exhibition of paintings and prints by Joyce Ringrose, Pete Gilbert, Ursula Leach, Frances Hatch, Martyn Brewster, Boo Mallinson, Sarah Humby, and Stephen Foster."



ELIZABETH WOODGER: 'FOLK AND LOCUS'

Until 24 November

St. John the Evangelist Church, Church Road, HIGHBRIDGE, TA9 3HS. 10am - 3pm. 01278 780633 / samigreencreative.weebly.com.

NEROCHE

Until 25 November

Ilminster Arts Centre, The Meeting House, East Street, ILMINSTER, TA19 0AN. Tuesday - Saturday 9.30am - 3pm. themeeetinghouse.org.uk.



GINNY ELSTON 'COULTER CABIN III'

Where They Meet

"In its seventh annual group show, Kobi & Teal presents a diverse selection of work spanning contemporary art, craft and design. Featuring 10 artists and designers from across the UK, this exhibition promises a rich celebration of material, form, colour and technique."

4 November - 24 December: Kobi & Teal, 57 Catherine Street, FROME, BA11 1DA. Monday 10am - 3pm, Wednesday - Saturday 10am - 4pm. 07737 367419 / kobiandteal.co.uk.

DAVID BROOKE: 'MYSTERIOUS ADVENTURES'

Until 26 November

Rotunda Gallery, Lyme Regis Museum, Bridge Street, LYME REGIS, DT7 3QA. Tuesday - Saturday 10am - 5pm, Sunday 10am - 5pm. £5.95. 01297 443370 / lymeregismuseum.co.uk. "David's paintings are meticulously built up in many layers of acrylic paint, creating texture and detail, giving them the look of medieval book illuminations, but with a contemporary twist."

'DARK'

Until 26 November

The Forbidden Carnival Gallery, 64A Market Place, CHIPPENHAM, SN15 3HG. Saturday 10am - 3pm. 07483 240702 / forbidden carnival.com. "An exhibition of dark and macabre art to usher us into the longer months ahead."

SSW WINTER OPEN

Until 26 November

Sou'-Sou'-West Arts Gallery, Symonds Estate, BRIDPORT, DT6 6HG. 10.30am - 4.30pm. 01308 301326 / sousouwest.co.uk.

LYN KIRKLAND

Until 30 November

Duchess of Cornwall Inn, Queen Mother Square, POUNDBURY, Dorchester, DT1 3BW. 9am - 9pm. 01305 458963 / artinpoundbury.co.uk. "Encaustic wax art."

'COLOUR OF WINTER IS IN OUR IMAGINATION'

Until 30 November

Studio 3 Gallery, Clevedon Craft Centre, Moor Lane, CLEVEDON, BS21 6TD. 10am - 4pm. studiothree.art.



Lunch at CAFE SLADERS

MANY MOONS
Marzia Colonna MRBS collages
Fiamma Colonna Montagu
ceramic sculpture continues until 11 Nov

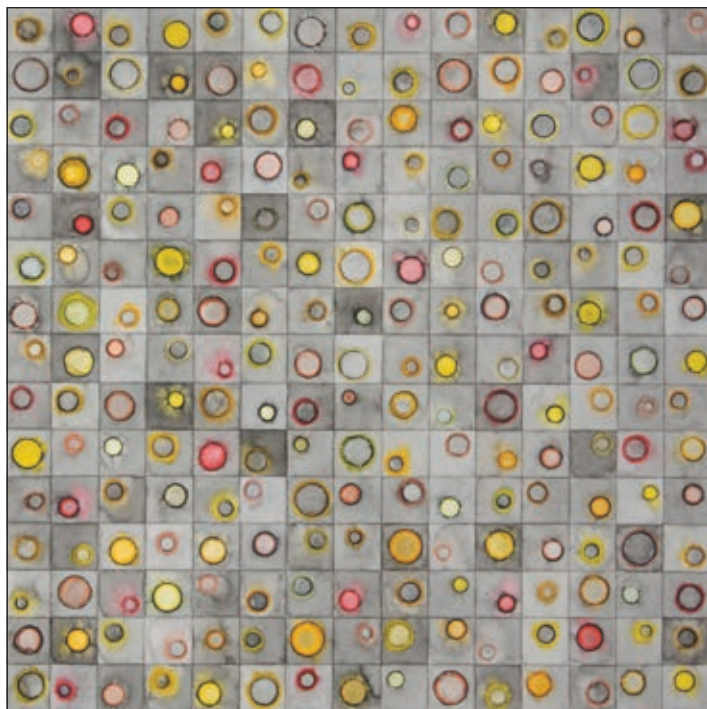
RADIANCE from 18 November
Louise Balaam NEAC Alex Lowery
with selected gallery artists and makers
Petter Southall furniture

SLADERS YARD

Contemporary Art & Craft Gallery West Bay DT6 4EL
Open Wednesday - Saturday 10am - 4.30pm
CAFE SLADERS also open Sunday 10am - 3.30pm
@sladersyard sladersyard.co.uk t:01308 459511



Left: Marzia Colonna The Breadfruit and the Shell collage 80 x 80cm; Above: Louise Balaam Pink Sky, Looking Inland oil on panel 100 x 120cm



Tim Edger 'Glow No. 2'

OPEN 23
Until 11 November



Market Place, Somerton, Somerset TA11 7NB
Tuesday - Saturday 10am - 5pm • 01458 273008 • acearts.co.uk



FUTURE PRESENT 2023

BRIDPORT ARTS CENTRE'S ANNUAL CHRISTMAS SELLING EXHIBITION

SAT 25 NOV - WED 20 DEC

ALLSOP GALLERY | OPEN 10AM - 4PM TUE - SAT | FREE ENTRY

For more information please visit www.bridport-arts.com



WINTER OPEN EXHIBITION 2023

FEATURING THE WORK OF OVER 40 DIFFERENT ARTISTS

10TH NOVEMBER - 23RD DECEMBER

JOIN US FOR CELEBRATORY DRINKS ON SATURDAY 11TH NOV 1-4PM



ROWENA DRAPER

will be painting live in our gallery window
during Glastonbury Frost Fayre on
Saturday 25th November 12:00-16:00



THE GALLERY WILL BE CLOSED FROM THE 24TH OF DECEMBER AND WILL RE-OPEN ON THE 1ST OF FEBRUARY
OUR ONLINE SHOP WILL REMAIN OPEN THROUGHOUT JANUARY
FOR ALL ENQUIRIES PLEASE E-MAIL US AT GALLERY@HEARTOFTHETRIBE.COM



HEART OF
THE TRIBE
ART GALLERY



PLEASE SCAN QR CODE
FOR MORE INFO

01458 780046

Gallery@HeartofTheTribe.com

www.HeartofTheTribe.com

[f](https://www.facebook.com/HeartofTheTribeGallery) [@HeartofTheTribeGallery](https://www.instagram.com/HeartofTheTribeGallery)

74 High Street, Glastonbury, BA6 9DZ

ART | ENERGY | COMMUNITY

EXHIBITIONS | EVENTS | GIFTS & PRINTS | WORKSHOPS | ART STUDIO | AWARD WINNING GARDEN

Visual Arts

SIMON HITCHENS: 'PARALLELS'

Until 2 December

Somerset Rural Life Museum, Chilkwell Street, GLASTONBURY, BA6 8DB. Tuesday - Sunday 10am - 5pm. £8.50 / £6.95. 01458 831197 / srlm.org.uk. "Somerset-based sculptor Simon Hitchens explores time and transience."



'PRESS'

Until 10 December

Royal West of England Academy, Queen's Road, Clifton, BRISTOL, BS8 1PX. Tuesday - Sunday 10am - 5pm. Free entry. 0117 973 5129 / rwa.org.uk. "Original prints by over 20 RWA Academicians."

Above: Emma Stibbon 'Grand Balcon Nord, Chamonix' (2022)

LEWIS PEAKE: 'NEW WORLDS'

Until 12 December

Mowlem Theatre, Shore Road, SWANAGE, BH19 1DD. Monday, Wednesday, Friday and Saturday 11am - 1pm, Monday - Saturday 6 - 10.30pm. themowlem.com.

LUCIE RIE: 'THE ADVENTURES OF POTTERY'

Until 7 January

Holburne Museum, Great Pulteney Street, BATH, BA2 4DB. Monday - Saturday 10am - 5pm, Sunday 11am - 5pm. £11 / £5.50. holburne.org. "This major exhibition celebrates Lucie Rie (1902 - 1995), one of the most accomplished and influential potters of the twentieth century."

GAIL MASON: 'THE UNSEEN LANDSCAPE'

Until 7 January

Victoria Art Gallery, Bridge Street, BATH, BA2 4AT. Tuesday - Sunday 10.30am - 5pm. £7 / £6.50 / £2.50. 01225 477233 / victoriagal.org.uk. "Gestural, semi-abstract, fictive places full of movement, weather, air and space."



Modern British and Contemporary Paintings and Ceramics

"This exhibition at Furzebrook Studios, near Wareham, features paintings by Prunella Clough, Sandra Blow, George Dannatt, John Hoyland (above), Peter Joyce, Brian Graham, Paddy MacMiadhachain, and Alastair Michie, alongside ceramic works from the Leach Pottery dynasty including William (Bill) Marshall, Richard Batterham, Mike Dodd, John Maltby and Marianne de Trey. The show also includes works by Nic Collins, Dan Kelly, and Dawn Harvey, as well as some fantastic vintage French pottery."

2 - 10 December: Furzebrook Studios, 52 Furzebrook Road, WAREHAM, BH20 5AX. Monday - Friday 2 - 6pm, Saturday and Sunday 11am - 6pm. 07974 651143 / timelinearts.co.uk.

'WHEN DREAMS CONFRONT REALITY'

Until 7 January

Victoria Art Gallery, Bridge Street, BATH, BA2 4AT. Tuesday - Sunday 10.30am - 5pm. £7 / £6.50 / £2.50. 01225 477233 / victoriagal.org.uk. "This show features the diversity of British Surrealism and European influences, with paintings, collage, drawings, ceramics and sculpture by artists such as Max Ernst, Julian Trevelyan, FE McWilliam and Man Ray."



JUDY TATE

Until 7 January

Seasons Green, 14 West Street, CORFE CASTLE, BH20 5HD. 10.30am - 5pm. seasonsgreen.uk. "Vibrant, contemporary pastels."



OFELIA RODRÍGUEZ: 'TALKING IN DREAMS'

Until 14 January

Spike Island, 133 Cumberland Road, BRISTOL, BS1 6UX. 12noon - 5pm. 0117 929 2266 / spikeisland.org.uk. "A major monographic exhibition by Colombian artist Ofelia Rodríguez (1946 - 2023), bringing together a selection of over fifty paintings, drawings, prints and sculptures made over the past five decades."

THIS SEASON AT

GALLERY ON THE SQUARE



Colin Willey



Sarah Ross-Thompson



John Boyd



Allan Green



Debra Sweeney

Queen Mother Square, Poundbury, Dorchester DT1 3BL

Mon-Sat, 9.30am to 5pm; Sundays: 11am to 4pm

01305 213322

www.gallerypoundbury.co.uk



'HELICOIL' (48 x 65 x 45 cm)



'TRILOGY' (45 x 60 x 35 cm)

Patricia Volk

Patricia Volk is a sculptor working primarily in clay. Her striking pieces are constructed and built in sections. Once fired, her pieces are painted using Lascaux or Golden acrylic paints, she does not use glazes. Her use of colour is instinctive. She describes herself as a 'great stealer' because of the way she accrues ideas for colour combinations by looking at images on Instagram and other sources.

Volk grew up in Belfast, and art, particularly drawing, was always her passion. In her late teens she moved to London and via City Lit and evening classes she secured a place at Middlesex Polytechnic to study a Foundation and then a BA in 3D Design. A move to Bradford on Avon saw her changing to the Ceramics degree at Bath Spa, and emerging from that she was given a solo show at Beaux Arts in Bath. At that point she was working figuratively, 'heads and torsos', and her icon-influenced works were flying off their plinths and into private collections.

Early on in her career she visited the United States and felt that American sculptors were more open to experimentation. In New York she encountered the work of Ron Nagle, who

combines clay with other materials, finishing his pieces in bright colours. She also saw clay sculpture by Ken Price which subversively abandoned both functionality and the use of glazes. Volk finds the emphasis on using the correct types of glaze when working in clay stifling. Nagle and Price's work had a profound effect on her and gave her permission to work without glazes. It validated her practice as a sculptor making work in painted clay, rather than being labelled as a ceramicist.

A lot of Volk's making is intuitive, essentially unplanned and deeply responsive to her material. Rolled flat slabs of clay are scored and cut, twisted and turned to create voluptuous forms. She works quickly, cutting into the clay as if she is drawing lines on a piece of paper. The resulting shapes are fitted together, some used and some discarded. She works on a form in sections, allowing the clay to become leather hard before joining them together. Once fired they are either glued or drilled and fixed. Smaller components which were originally discarded are laid out and fitted together, almost like a three dimensional collage.

Her workshop is sited on a light industrial unit on a farm and that suits her. Her father was a builder and she feels a closer affinity to people who work with their hands. She is currently working on a series of small works, made from extruded clay coils, based on the idea of 'knots'. Each one is different, and she set herself a time limit, making them all in a day. She likes the adrenalin flow of working to a deadline. Once finished they will be hung together as a wall piece and she is still debating whether or not to colour all of them.

Patricia Volk was the recipient of the Evolver Feature Prize for her work in the Royal West of England Academy's 170th Open Exhibition, which runs until the 14th January 2024. She has two pieces in the show: *Helicoil*, a luscious blue form which curves around as if hugging itself, and her orange and red *Trilogy*, which feels more architectural. Both are typical of her signature voluptuous curves and strong colour. She breaks all the rules of conventional ceramics, communicating her excitement in the handling of clay and paint that expresses itself in her sculpture.

Fiona Robinson

patriciavolk.org



COMMON THREAD

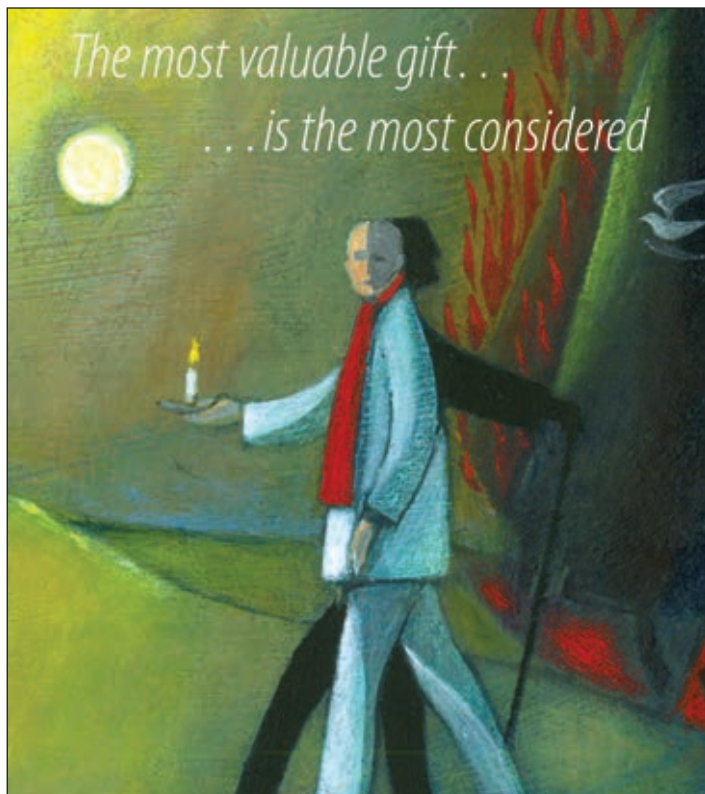
16.09.2023-01.01.2024

Lyn Barlow & Grayson Perry

@eastquaywatchet
eastquaywatchet.co.uk
Open daily 10am-5pm

Contains Art CIO, Charity Number: 1193931,
Image credit: Joseph Horton

**EAST
QUAY**



THE CHRISTMAS SHOW

Art, cards, ceramics & coffee at The Slade Centre

6 Nov to 6 Jan



www.thesladecentre.com for opening times



08 Nov – 02 Jan 24
Unwrapped
Open (Call for entries)

07 Jan – 04 Feb
Squares
Open (Call for entries)

01 – 03 Dec
Sousouwest Art Fair
(Call for entries)

03 – 25 Feb
Transformation
Open (Call for entries)

09 Dec – 07 Jan 24
Friends Open

Become a friend
contact support@lymebayarts.co.uk

13 – 28 Jan 24
Beaminster School



Supported using public funding by
**ARTS COUNCIL
ENGLAND**



Gallery & Shop
Daily: 10:30 - 16:30

Manor Yard, Symondsbur Estate,
Bridport, DT6 6HG

@sousouwestgallery

sousouwest.co.uk



Subscribe to
EVOLVER MAGAZINE
online at
evolver.org.uk

Six bi-monthly issues for £25



RWA 170 ANNUAL OPEN

Until 14 January

Main Gallery, Royal West of England Academy, Clifton, BRISTOL, BS8 1PX. Tuesday - Sunday 10am - 5pm. £8.90. 0117 973 5129 / rwa.org.uk. "Dynamic and varied exhibition showcasing work in all mediums by some of today's most exciting artists."

ELIAS SIME: 'EREGATA'

Until 18 February

Arnolfini, 16 Narrow Quay, BRISTOL, BS1 4QA. Tuesday - Sunday 11am - 6pm. arnolfini.org.uk. "Major solo exhibition by one of Ethiopia's leading contemporary artists."

GWEN JOHN: 'ART AND LIFE IN LONDON AND PARIS'

Until 14 April

The Holburne Museum, BATH, BA2 4DB. Monday - Saturday 10am - 5pm, Sunday and Bank Holidays 11am - 5pm. £11. holburne.org.

THE CREATIVES

1 - 12 November

Walford Mill, Knobcrook Road, WIMBORNE, BH21 1NL. Wednesday - Saturday 10am - 5pm, Sunday 11am - 4pm. 01202 841400 / walfordmillcrafts.co.uk. Painting, sculpture, jewellery and glass.

VAROSHA

4 and 5 November

Hours, 10 Colston Yard, BRISTOL, BS1 5BD. 11am - 4pm. 07766 054659 / hours-space.com. Paintings.

JULIE DUNSTER: 'TIME AND TIDE'

4 - 12 November

Seaglass Gallery, The Strand, LYMPSTONE, EX8 5ES. 10am - 4pm. seaglassgallery.co.uk. "A must-see for lovers of marine art."

'ALSO ARTISTS: A STAFF EXHIBITION'

7 November - 7 January

Royal West of England Academy, Queen's Road, Clifton, BRISTOL, BS8 1PX. Tuesday - Sunday 10am - 5pm. Free entry. rwa.org.uk. "A unique perspective on the people behind the scenes at the RWA, allowing visitors to appreciate the connection between their roles as art professionals and their roles as artists."



GRAYSON PERRY 'ESSEX HOUSE TAPESTRIES: THE LIFE OF JULIE COPE'

Common Thread

"This new exhibition features tapestries by Grayson Perry and embroidered works by local artist and activist Lyn Barlow. The exhibition celebrates two very different artists: one a well-known public figure and artist of international standing and the other an extraordinary but relatively hidden talent working locally in West Somerset. Both artists use thread to powerfully tell tales of trials and tribulations, but also activism, stoicism, and strength. In Lyn's quilts, the viewer is party to a story that is simultaneously extraordinary and ordinary. It is a story of great sadness and strife, but also one highlighting a life of integrity, devoted to community and care. By pairing these works with Grayson Perry's, the exhibition brings together the intriguing stories of two women living regular but fascinating lives, Julie in Essex, and Lyn in Somerset, both existing through a common era and cultural landscape, portrayed through a common medium - thread."

Until 1 January: East Quay, Harbour Road, WATCHET, TA23 0AQ. Monday - Sunday 10am - 5pm. eastquaywatchet.co.uk.

NICK ANDREW AND TANYA HINTON: 'WET AND WILD'

8 - 21 November

Shaftesbury Arts Centre, Bell Street, SHAFTESBURY, SP7 8AR. Monday - Saturday 10am - 4pm. 01747 855243. "Landscapes from the banks of the River Wylye, and wildlife paintings on reclaimed materials."

'UNWRAPPED'

8 November - 2 January

Sou'-Sou'-West Arts Gallery, Symonds Estate, BRIDPORT, DT6 6HG. 10.30am - 4.30pm. 01308 301326 / sousouwest.co.uk. "Annual festive exhibition featuring some of the best handmade gifts our local artistic community has to offer."

'ANCESTORS'

10 - 25 November

Guggleton Farm, Station Road, STALBRIDGE, DT10 2RQ. Tuesday - Saturday 11am - 3pm. 01963 363456 / guggletonfarmarts.com.

SOUTHWEST ART & DESIGN SHOW

11 and 12 November

Dunster Tithe Barn, Priory Green, DUNSTER, Minehead, TA24 6RY. 10am - 4pm. 01643 821246 / dunstertithebarn.org.uk.

BRISTOL CLAY

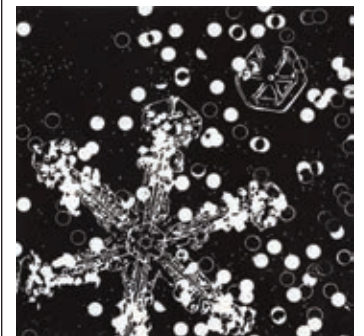
11 - 22 November

Centrespace, 6 Leonard Lane, BRISTOL, BS1 1EA. 10am - 5pm. 0117 929 1234 / centrespace.org.uk. "A diverse and exciting group exhibition demonstrating the infinite possibility of clay!"

PRESENT MAKERS 2023

11 November - 23 December

Thelma Hulbert Gallery, Dowell Street, HONITON, EX14 1LX. Tuesday - Saturday 10am - 5pm. 01404 45006 / thelmahulbert.com.



'IMPRESS AT CHRISTMAS'

11 November - 6 January

Fisherton Mill, 108 Fisherton Street, SALISBURY, SP2 7QY. Monday - Saturday 9.30am - 5pm. 01722 415121 / fishertonmill.co.uk. "Annual Christmas exhibition featuring the best of contemporary printmaking."

SOMERSET PRINTMAKERS

11 November - 28 January

The Whittox Gallery, RISE, Whittox Lane, FROME, BA11 3BY. Tuesday - Saturday 9am - 4pm, Sunday 10am - 4pm. 07712 523734 / thewhittoxgallery.com.

Kit Glaisyer

'West Dorset Paintings'

Jubilee Hall

Poundbury DT1 3BW

5-day Pop-up Exhibition

Weds 22nd - Sun 26th November

Open 10am to 6pm

Bridport Contemporary

11 Downes Street

Bridport DT6 3JR

Weds & Sat, 10am - 4pm

07983 465789

kitglaisyer.com

Visual Arts

CHRISTMAS ARTS & CRAFTS

FAYRE

12 November

Westlands Entertainment Venue,
Westbourne Close, YEOVIL, BA20
2DD. 11am - 4pm. Free entry. 01935
422884 / westlandsyeovil.co.uk.

PHAT QWARTERS TEXTILE

ARTISTS: 'FABRICATING TOGETHER'

13 - 18 November

No. 1 West Street, 1 West Street,
SOMERTON, TA11 7PS. 10am - 4pm.
07548 671520. *Textiles.*

SHADES OF SHIPHAM ARTISTS

14 - 25 November

Wells Museum, 8 Cathedral Green,
WELLS, BA5 2UE. Tuesday -
Saturday 10am - 4pm. 01749 673477
/ wellsmuseum.org.uk.



ALEXANDER HOLLWEG:

'JOURNEYS IN ART'

14 November - 2 March

The Museum of Somerset, Taunton
Castle, Castle Green, TAUNTON, TA1
4AA. Tuesday - Saturday 10am -
5pm. 01823 255088 /
museumofsomerset.org.uk. *"The
first retrospective of Hollweg's art
displaying paintings and sculpture
from across the six decades of his
career. He painted for many years
from the Nettlecombe estate,
home to a creative community of
artists, musicians and writers, in
West Somerset."*

'HANDMADE WIMBORNE'

15 November - 17 December

Walford Mill, Knobcrook Road,
WIMBORNE, BH21 1NL. Wednesday
- Saturday 10am - 5pm, Sunday
11am - 4pm. 01202 841400 /
walfordmillcrafts.co.uk.

*"Contemporary festive showcase
featuring different makers each
week for 5 weeks."*



FELICE HODGES 'MARIGOLD NO. 2' (Mixed media on canvas, 100 x 100 cm)

Vessels

"The polysemic nature of vessels highlights the versatility and richness of the term. The numerous meanings of the word and potential interpretations provide a rich medium for creative expression, symbolism, and the exploration of various concepts related to containment, transportation, embodiment and transformation. The contemporary interpretations in this exhibition serve to honour the vessel's historical place in our lives, whilst also challenging our understanding and meaning of this multifaceted term. The fifteen skilled and accomplished artists represent a myriad of interpretations and associations expressed through making, creating a narrative resulting in a most stimulating exhibition."

3 November - 23 December: The Vanner Gallery, 45 High Street, SALISBURY, SP1 2PB. Tuesday - Saturday 10am - 5pm. 01722 501551 / vannergallery.com.

SPOTLIGHT 3

Modern & Contemporary Art from the
Collection of Chippenham Museum



Sat 18 Nov - Sat 24 Feb
Free entry
Monday-Saturday, 10am-4pm

heritage@chippenham.gov.uk
01249 705020
chippenham.gov.uk/chippenham-museum

© Nicholas Lees



'WET + WILD'
 Nick Andrew
 Tanya Hinton
 Shaftesbury Arts Centre
 Bell Street. SP7 8AR
 8 - 21 Nov / 10am - 4pm
www.nickandrew.co.uk
www.tanyahinton.co.uk
 07730 400784 / 07713 277083



seasons green
 Gift Shop & Gallery
 Inspired by the English Countryside & Coast
 Daily 10:30am-5:00pm
 14 West St. Corfe Castle
www.seasonsgreen.co.uk



Painting by Peter Joyce, Pottery by John Malby
 & a Vintage French Cakes Book
Modern British & Contemporary Paintings & Ceramics
 Exhibition 2-10 December
 Prunella Clough, Sandra Blow, George Dannatt, John Hoyland
 Purbeck Revisited: Brian Graham, Peter Joyce, Padraig MacMiadhachain,
 & Alistair Michie
 Leach Pottery, Mike Dodd, Dan Kelly, Dawn Harvey, John Malby,
 William Marshall, Vintage French Pottery & others
 Saturday & Sundays 11-6pm Monday - Friday 2-6pm or by appointment
www.timelinearts.co.uk at Furzebrook Studios near Wareham, BH20 5AX



HATCH
 Secret Barn Art Exhibition
 27 October to 12 November
DEATH & MICROWAVES
 Friday to Sunday 11am to 4pm
hatch.art.somerset@gmail.com
hatch-art.weebly.com



04/11 - 24/12
where they meet
KOBI & TEAL
 57 Catherine Street Frome BA11 1DA
kobiandteal.co.uk
[@kobiandteal](https://twitter.com/kobiandteal)



Exhibit A
 Artists and photographers
 are invited to submit work
 for next issue's page 3
 Exhibit A by emailing
 images to:
simon@evolver.org.uk



Alan Baggs
ART FAIR
 Exhibition of art and craft by local
 artists and designer makers
Sat 18 and Sun 19 November
 10am to 4.30pm
Stourpaine Village Hall
 Havelins, Stourpaine, DT11 8TJ
 Going north on A350 into Stourpaine, turn
 left immediately after White Horse pub.
 Keep straight on at junction.



THE CREATIVE GALLERY
 Showcasing ceramics, paintings, textiles, jewellery and glass by local artists
A Very Happy Christmas from all @ Creative
 The Guests Return
 5th November - 23rd December
 St John's Hill, Wareham, Dorset BH20 4NB t 01929 551505 e creativegallery@hotmail.co.uk
Open Monday-Saturday 10-5 until 3pm on 23rd December

NEAT IMAGE: 'TROVE'

16 - 27 November

The Gallery Upstairs, Upton Country Park, POOLE, BH17 7BJ. 10am - 4pm. 07488 233828. "Photography, 3D, recycled jewellery and poetry."



'CHRISTMAS EXHIBITION'

18 November - 3 December

Lanacre Barn Gallery, LANACRE, near Withypool, TA24 7SD. 11am - 5pm. 07814 420913 / moorlandart.com. "High up on Exmoor, you will be amazed to find an exhibition of the highest standard, with ten professional artists coming together in a converted Exmoor Barn."

Above: Pine Feroda 'Permian Sky'

THE ARBOREALISTS: 'THE TREE OF LIFE'

18 November - 23 December

ACE Arts, Market Place, SOMERTON, TA11 7NB. Tuesday - Saturday 10am - 5pm. 01458 273008 / acearts.co.uk. See page 5.

STEPHEN YATES: 'JOURNEYS'

22 - 28 November

Shaftesbury Arts Centre, Bell Street, SHAFTESBURY, SP7 8AR. Monday - Saturday 10am - 4pm. 01747 855243. "A visual response from the artist as he walked from his home on Portland to his birthplace in Yorkshire."

'BACK FROM MANCHESTER'

22 November - 22 January

Hatch Gallery, 7a Church Street, CHRISTCHURCH, BH23 1BW. Tuesday - Saturday 11am - 4pm. 07787 517958 / hatchgallery.co.uk.

'DISRUPTION DIRECTION'

25 - 29 November

Centrespace, 6 Leonard Lane, BRISTOL, BS1 1EA. 12noon - 6pm. 0117 929 1234 / centrespace.org.uk. "Works by five ceramic artists."



'MR MAGNOLIA'

Quentin Blake: Illustrating Verse

"The first ever exhibition dedicated to Quentin Blake's illustrations for poetry features artwork for popular nursery rhymes like *The Owl and the Pussycat* and classic stories, plus previously unseen works from Blake's archive, such as surreal illustrations for Sylvia Plath's *The Bed Book* and mischievous cats for T S Elliot's *The Song of the Jellicles*."

Until 6 January: Lighthouse, 21 Kingland Road, POOLE, BH15 1UG. Tuesday - Saturday 10am - 9pm. 01202 280000 / lighthousepoole.co.uk.

'FUTURE PRESENT 2023'

25 November - 20 December

Bridport Arts Centre, 9 South Street, BRIDPORT, DT6 3NR. Tuesday - Saturday 10am - 4pm. 01308 424204 / bridport-arts.com.

"Contemporary craft and design, including wood, textiles, prints, ceramics, jewellery and more."

'WISHLIST'

28 November - 14 December

Andelli Art, Mendip House, Upper Breach, South Horrington, WELLS, BA5 3QG. Tuesday - Saturday 10am - 5pm. andelliart.com. "Unique gift ideas. From 19th / 20th Century and contemporary art, to ceramics, folk art, lighting, studio pottery, jewellery and collectibles."



DAVE WICKEN: 'BEYOND THE BEACH HUTS'

28 November - 28 January

Rotunda Gallery, Lyme Regis Museum, Bridge Street, LYME REGIS, DT7 3QA. Tuesday - Saturday 10am - 5pm, Sunday 10am - 5pm. £5.95. lymeregismuseum.co.uk.

Above: 'Big Blue'

NADINE SHABAN

1 and 2 December

Top Floor, 66 St Michael's Lane, BRIDPORT, DT6 3RB. Friday 6 - 9pm, Saturday 12noon - 6pm. nadineshaban.co.uk. "Open studio."

SOU'-SOU'-WEST ART FAIR

1 - 3 December

Sou'-Sou'-West Arts Gallery, Symondsbur Estate, BRIDPORT, DT6 6HG. 10.30am - 4.30pm. 01308 301326 / sousouwest.co.uk.

BEAR FLAT ARTISTS CHRISTMAS ART FAIR & MARKET

2 December

Methodist Church Hall, Bruton Avenue, BATH, BA2 4QJ. 10am - 5pm. bearflatartists.co.uk.

'A SEA OF TALENT'

2 - 10 December

Jubilee Hall, Great Cranford Street, POUNDBURY, Dorchester, DT1 3BW. 10am - 4pm. 07879 167435 / artinpoundbury.co.uk. "A veritable feast of art in all its guises."

THE SHAFTESBURY OPEN

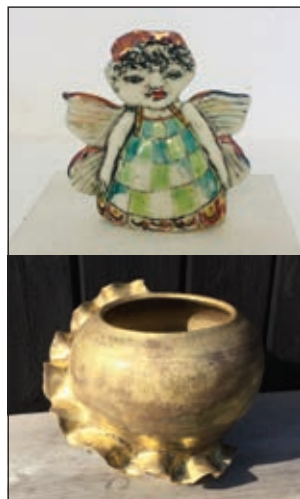
6 - 23 December

Shaftesbury Arts Centre, Bell Street, SHAFTESBURY, SP7 8AR. Monday - Saturday 10am - 4pm. 01747 855243 / shaftesburyartscentre.org.uk.

FRIENDS OPEN

9 December - 7 January

Sou'-Sou'-West Arts Gallery, Symondsbur Estate, BRIDPORT, DT6 6HG. 10.30am - 4.30pm. 01308 301326 / sousouwest.co.uk.



Boilerhouse Gallery

CONTEMPORARY ART AND CRAFT
IN A WONDERFUL LOCATION

Tuesday to Sunday 11am - 4pm

Sandy Hill Lane, Corfe Castle, BH20 5JF
07398 052489

boilerhousegallery.co.uk



Music

November and December 2023

FITZROY QUARTET

3 November

Bridport Arts Centre, 9 South Street, BRIDPORT, DT6 3NR. 11.30am. £14. 01308 424204 / bridport-arts.com.

FITZROY QUARTET

3 November

Ilminster Arts Centre, The Meeting House, East Street, ILMINSTER, TA19 0AN. 7.30pm. £18. 01460 54973 / themeeetinghouse.org.uk.



'STORY OF D.I.Y.'

4 November

Yeovil Art Space and EPS, Quedam Shopping Centre, YEOVIL, BA20 1EU. 3 - 7pm. Free entry, booking essential: yeovilartspace.uk.

"Afternoon conversation and early evening performances featuring various protagonists involved in Yeovil's music scene since the 1970s. Confirmed so far are Mark Wilson (The Mob / All the Madmen), Criss Cole (Bikini Mutants), Alan Flint (Feeding The Fish), Chris Lowe (Acorn Records), Graham Moores (The Golden Pathway), and Simon Barber (The Chesterfields / Electric Broom Cupboard)."

Above: Bikini Mutants

FITZROY QUARTET

4 November

The Dance House, Gouldsbrook View, North Street, CREWKERNE, TA18 7AL. 7.30pm. £18. concertsinthewest.org.

EXETER PHILHARMONIC CHOIR: 'BAROQUE CONCERT'

4 November

Exeter Cathedral, EXETER, EX1 1HS. 7.30pm. £12. exeterphilharmonic.org.uk.



Blair Dunlop

"Blair Dunlop is an award winning (BBC Folk Award, Premio Ciampi) singer songwriter and guitarist who has toured the globe. Blair is a celebrated singer and guitarist and what sets him apart from his peers is the lyrical and musical maturity with which he writes. He has released 4 studio albums with *Gilded* and *Notes from an Island* receiving particularly high critical acclaim."

9 November: Village Hall, LAMYATT, BA4 6NJ. 7pm. £12 / £8. 07798 933776 / takeart.org.

10 November: Village Hall, BALTONSBOROUGH, BA6 8PX. £10 / £8. 07773 050214 / takeart.org.

THE DOMINIC ALLDIS TRIO

5 November

The Corn Exchange, High East Street, DORCHESTER, DT1 1HF. 2pm. £16 / £14. dorchesterarts.org.uk.

FITZROY QUARTET

5 November

St Peter & St Paul Church, Pound Lane, UPLYME, Lyme Regis, DT7 3TT. 3pm. £18. concertsinthewest.org.

ARMONICO CONSORT

9 November

Westlands Entertainment Venue, Westbourne Close, YEOVIL, BA20 2DD. 7.30pm. £21.50. 01935 422884 / westlandsyeovil.co.uk. "Baroque music at its finest."

MIKE DENHAM AND MIKE PIGGOTT

10 November

Ilminster Arts Centre, The Meeting House, East Street, ILMINSTER, TA19 0AN. 7.30pm. £20 / £5. 01460 54973 / themeeetinghouse.org.uk. "Swing jazz in the Hot Club style!"



THE TRIALS OF CATO

10 November

The Beehive, Dowell Street, HONITON, EX14 1LZ. 7.30pm. £16. beehivehoniton.co.uk. "The Sex Pistols of folk."

PETER OAKES AND SALLY FLANN

10 November

The Corn Exchange, High East Street, DORCHESTER, DT1 1HF. 11.30am. Free entry. 01305 266926 / dorchesterarts.org.uk. Piano and cello recital.

INGRID FLITER

10 November

Cedars Hall, The Liberty, WELLS, BA5 2ST. 7.30pm. £22. cedarshallwells.co.uk. Piano recital.



AXE & TRAP STUDIOS IS A RECORDING FACILITY SITUATED AT THE FOOT OF THE MENDIP HILLS IN WELLS, SOMERSET.

Three performance spaces, 24 channel Trident console, extensive analogue outboard and much more.

Take a tour at
AXEANDTRAPSTUDIOS.COM

GEORGE HINCHCLIFFE'S UKULELE ORCHESTRA OF GREAT BRITAIN

10 November

Lighthouse, 21 Kingland Road, POOLE, BH15 1UG. 7.30pm. 01202 280000 / lighthousepoole.co.uk.

OHISASHIBURI

10 November

Lighthouse, 21 Kingland Road, POOLE, BH15 1UG. 7.45pm. 01202 280000 / lighthousepoole.co.uk. *Jazz.*

JOHN LAW AND JON LLOYD

10 and 11 November

Tincton Gallery, The Old School House, TINCLETON, near Dorchester, DT2 8QR. 7.30pm. £15. tinctongallery.com. *"Contemporary jazz."*

BSO: 'SYMPHONIC SPACE'

11 November

Lighthouse, 21 Kingland Road, POOLE, BH15 1UG. 7.30pm. 01202 280000 / lighthousepoole.co.uk. *"Galactic classics at their best."*

ACOUSTIC BADGER BAND

11 November

The Belvedere, 33 - 34 High West Street, WEYMOUTH, DT4 8JH. 8.30pm. Free entry. 01305 459099. *"Cider-folk goodness."*

BSO: 'SEETA'S RITE'

15 November

Lighthouse, 21 Kingland Road, POOLE, BH15 1UG. 7.30pm. 01202 280000 / lighthousepoole.co.uk.



BUDAPEST CAFE ORCHESTRA

16 November

The Mowlem, SWANAGE, BH19 1DD. 7.30pm. £12 / £5. 03336 663366 / artsreach.co.uk. *"A blistering barrage of traditional folk and gypsy-flavoured music."*



Basset

Toronto-based indie-folk duo, Basset, bring a deep love of the natural world to their gorgeously meditative performances, exploring themes of life in change, their travels around Northern Ontario, the Canadian and American prairies and the many characters who have crossed their paths. With comparisons to The Milk Carton Kids, Hozier, and Bon Iver, acoustic songwriters Sam Clark and Yasmine Shelton will take you through the city streets in the hours before the world has woken, or to a corrugated steel home north of the treeline. Their inventiveness shines on fiddle and intricate harmonies, with Shelton and Clark's voices wrapping around each other like twin flames in a warm fire.

9 November: Village Hall, SHIPTON GORGE, DT6 4LZ. 7.30pm. £12 / £5. 01308 897407 / artsreach.co.uk.

10 November: Village Hall, IBBERTON, DT11 0EL. 7.30pm. £12 / £5. 01258 817269 / artsreach.co.uk.

11 November: Village Hall, WOODLANDS, BH21 8LJ. 7.30pm. £12 / £5. 07732 189470 / artsreach.co.uk.

TRACK DOGS

16 November

The Beehive, Dowell Street, HONITON, EX14 1LZ. 8pm. £16. beehivehoniton.co.uk.

GROOVE DEN

16 November

Marine Theatre, Church Street, LYME REGIS, DT7 3QB. 7pm. £18. 01297 442394 / jazzjurassica.co.uk.

BUDAPEST CAFE ORCHESTRA

17 November

Memorial Hall, STURMINSTER MARSHALL, BH21 4BQ. 7.30pm. £12 / £5. 07903 057427 / artsreach.co.uk. *See 16 November.*

CHRIS JAGGER

18 November

Cedars Hall, The Liberty, WELLS, BA5 2ST. 7.30pm. £18. cedarshallwells.co.uk.

DANNY MCMAHON + HELENA MACE + THE SHUCKS

18 November

Lighthouse, 21 Kingland Road, POOLE, BH15 1UG. 7.30pm. 01202 280000 / lighthousepoole.co.uk.

BUDAPEST CAFE ORCHESTRA

18 November

Village Hall, MARNHULL, DT10 1JZ. 7.30pm. £12 / £5. 01258 820458 / artsreach.co.uk. *See 16 November.*

This year's show is the perfect place to shop for unique Christmas gifts ...

SOUTHWEST

DUNSTER TITHE BARN
Priory Green, Dunster, Minehead TA24 6RY

Sat 11th + Sun 12th NOVEMBER

* FREE ENTRY * 10.00-4.00pm

ART & DESIGN SHOW

ART | CERAMICS | SCULPTURE | JEWELLERY | HOME





VRi

"Three-part harmonies, stunning fiddle and the unusual addition of cello forge VRi's totally unique sound. Since forming in 2016, the trio have been pumping out their native foot-stomping dance tunes whilst maintaining the poise and elegance of a string ensemble. Seizing the remaining strands of subsumed tradition and music, VRi blends them into a joyous celebration of Welsh identity and a contemporary rediscovery of lost traditions."

15 December: Community Hall, LITTON CHENEY, DT2 9AU. 7.30pm. £12 / £5. 01308 482514 / artsreach.co.uk.

16 December: Village Hall, CORFE CASTLE, BH20 5EE. 7.30pm. £12 / £5. 07590 352219 / artsreach.co.uk.

BSO TRIO OF FLUTE, HARP AND CELLO: 'SUNDAY SERENADE'

19 November

Comrades Hall, BROADWINDSOR, DT8 3QP. 2.30pm. £12 / £5. 07796 454203 / artsreach.co.uk.

GIORDANO BUONDONNO

23 November

Lighthouse, 21 Kingland Road, POOLE, BH15 1UG. 1.05pm. 01202 280000 / lighthousepoole.co.uk. *Piano recital.*

I'M NO CHESSMAN + PYLON POETS + KEANU IENCO

23 November

Lighthouse, 21 Kingland Road, POOLE, BH15 1UG. 7.30pm. 01202 280000 / lighthousepoole.co.uk.

MIKEY KENNEY

23 November

The Beehive, Dowell Street, HONITON, EX14 1LZ. 7.30pm. £13. 01404 384050 / beehivehoniton.co.uk.

THE DARIUS BRUBECK QUARTET

24 November

Lighthouse, 21 Kingland Road, POOLE, BH15 1UG. 8pm. 01202 280000 / lighthousepoole.co.uk. *Jazz.*

JULIAN JOSEPH TRIO

24 November

Cedars Hall, The Liberty, WELLS, BA5 2ST. 7.30pm. £25. cedarshallwells.co.uk. *"One of the UK's jazz greats."*

MAMA'S GUN

24 November

Marine Theatre, Church Street, LYME REGIS, DT7 3QB. 7pm. £22. 01297 442394 / jazzjurassica.co.uk.

OPA ROSA

24 November

Village Hall, CURRY MALLET, TA3 6SY, 8pm. £12. 07788 817619 / takeart.org. *"Balkan party band!"*

ACOUSTIC BADGER BAND

24 November

Ropemakers, 36 West Street, BRIDPORT, DT6 3QP. 9.30pm. 01308 421255 / theropemakers.com. *See 11 November.*

OPA ROSA

25 November

Village Hall, KINGSDON, TA11 7LL. 7.30pm. £10 / £6. 01935 841402 / takeart.org. *See 24 November.*

JOHN KELLY

25 November

Lighthouse, 21 Kingland Road, POOLE, BH15 1UG. 8pm. 01202 280000 / lighthousepoole.co.uk.

THE BARBICAN STRING QUARTET

26 November

Kimmeridge House, Bournemouth University, Fernbarrow, POOLE, BH12 5BB. 3pm. £20. bournemouthchambermusic.co.uk.

BSO: '1001 TALES'

29 November

Lighthouse, 21 Kingland Road, POOLE, BH15 1UG. 7.30pm. 01202 280000 / lighthousepoole.co.uk.

BSO BRASS ENSEMBLE: 'LET'S DANCE'

30 November

Village Hall, SYDLING ST NICHOLAS, DT2 9NX. 7.30pm. £12 / £5. 01300 341777 / artsreach.co.uk.

THE SCRIBES + TWO DWELLERS + CYPHER

1 December

The Belvedere, 33 - 34 High West Street, WEYMOUTH, DT4 8JH. 8.30pm. Free entry. 01305 459099.

SIGER

2 December

Royal Manor Theatre, PORTLAND, DT5 1LT. 7.30pm. £12 / £5. 03336 663366 / artsreach.co.uk. *"Folk music from Flanders."*



We are a funky, independent record shop stocking a great range of new and preloved vinyl, specialising in Reggae, Hip Hop, Soul, Funk, World, Electronic, Jazz, Blues, Alternative, Indie, Rock, Pop and more

8a Pope Street, Brewery Square, Dorchester, DT1 1GW
Tuesday to Saturday from 10am

CLOCKTOWER RECORDS

Unit 10a
St Michael's Estate
St Michael's Lane
Bridport
Dorset DT6 3RR
+
35a South Street
Bridport
Dorset DT6 3NY
Monday to Saturday
10am - 4.30pm
clocktowermusic.co.uk



BAROQUE CHRISTMAS CONCERT

2 December

Lighthouse, 21 Kingland Road,
POOLE, BH15 1UG. 7.30pm. 01202
280000 / lighthousepoole.co.uk.

SIGER

3 December

Village Hall, CERNE ABBAS, DT2
7GY. 7.30pm. £13 / £6. 07823 778758
/ artsreach.co.uk. See 2 December.

THE OVERTONES

3 December

Lighthouse, 21 Kingland Road,
POOLE, BH15 1UG. 7.30pm. 01202
280000 / lighthousepoole.co.uk.

"Multi-platinum selling vocal
harmony group."

BSO: 'MAGIC MAHLER'

6 December

Lighthouse, 21 Kingland Road,
POOLE, BH15 1UG. 7.30pm. 01202
280000 / lighthousepoole.co.uk.



JENNY BLISS BENNETT: 'THE FANTASTIC VIOLIN'

7 December

Strode Theatre, Church Road,
STREET, BA16 0AB. 7.45pm. £13.
strodetheatre.org.uk. "Jenny Bliss
Bennett, virtuoso baroque violinist,
plays a programme of sonatas by
the 17th-century composer
Heinrich Biber. She is accompanied
by world-class harpsichordist David
Gordon, and in the spirit of Biber's
inventiveness, Jenny and David will
take a tune suggested by the
audience and improvise it into a
17th-century sonata! Guitarist and
synth and player William Kraemer
will also join on stage to create a
sublime new sound-world, in a
premiere inspired by Biber's
'Salzburg Mass'."



Jake Bugg + Galaxy Thief

"Lighthouse's first standing concert for five years as the *Lightning Bolt* hitmaker visits Poole on a run of dates in support of his latest album *Saturday Night, Sunday Morning*."

11 December: Lighthouse, 21 Kingland Road, POOLE, BH15 1UG.
7.30pm. 01202 280000 / lighthousepoole.co.uk.

DR FEELGOOD

7 December

The Beehive, Dowell Street,
HONITON, EX14 1LZ. 7.30pm. £26.
beehivehoniton.co.uk.

LA VIE EN ROSE

8 December

Bridport Arts Centre, 9 South Street,
BRIDPORT, DT6 3NR. 8pm. £14 / £12
/ £5. 01308 424204 / bridport-
arts.com. "Exuberant, toe-tapping
Gypsy jazz."

NARTHEN TRIO

8 December

Parish Church, BLANDFORD, DT11
7PY. 7.30pm. £12 / £5. 01258 480698
/ artsreach.co.uk. "Heart-lifting
music that includes polyphonic,
unaccompanied carols from
Yorkshire and beyond, and tunes
that make you want to dance."

NARTHEN TRIO

9 December

Village Hall, WOOTTON FITZPAINE,
DT6 6NF. 7.30pm. £12 / £5. 01297
560948. See 8 December.

NARTHEN TRIO

10 December

Village Hall, STUDLAND, BH19 3BT.
4pm. £12 / £5. 01929 450587 /
artsreach.co.uk. See 8 December.

ST AGNES FOUNTAIN

14 December

The Beehive, Dowell Street,
HONITON, EX14 1LZ. 7pm. £20.
beehivehoniton.co.uk.

TWO MAN TRAVELLING MEDICINE SHOW + NICK CAPALDI

14 December

Lighthouse, 21 Kingland Road,
POOLE, BH15 1UG. 7.30pm. 01202
280000 / lighthousepoole.co.uk.

MOSCOW DRUG CLUB

15 December

Lighthouse, 21 Kingland Road,
POOLE, BH15 1UG. 8pm. 01202
280000 / lighthousepoole.co.uk.

BSO MIXED ENSEMBLE:

'CHRISTMAS CRACKERS'

15 December

The Exchange, STURMINSTER
NEWTON, DT10 1FH. 7.30pm. £12 /
£5. 01258 475137 / artsreach.co.uk.

DUNCAN HONEYBOURNE

15 and 16 December

Tincleton Gallery, The Old School
House, TINCLETON, DT2 8QR.
7.30pm. £15. tincletongallery.com.
"Classical piano."

'TO DRIVE THE COLD WINTER AWAY!'

16 December

Wells and Mendip Museum, 8
Cathedral Green, WELLS, BA5 2UE
12.30 and 2.30pm. £12. 01749 673477
/ jennybliss.co.uk. "Jenny Bliss and
Joanna Lawrence present a
celebration of ancient Christmas
music."

BSO: 'LAST NIGHT OF THE CHRISTMAS PROMS'

16 December

Lighthouse, 21 Kingland Road,
POOLE, BH15 1UG. 7.30pm. 01202
280000 / lighthousepoole.co.uk.

NARTHEN TRIO

16 December

Halsway Manor, Halsway Lane, near
CROWCOMBE, TA4 4BD. 8pm. £12 /
£6. halswaymanor.org.uk. See 8
December.

WELLS CITY BAND: 'A CLASSIC CHRISTMAS'

17 December

Cedars Hall, The Liberty, WELLS,
BA5 2ST. 3.30pm. £10 / £8.
cedarshallwells.co.uk.

BOURNEMOUTH SINFONIETTA CHOIR: 'NOEL! NOEL!'

20 December

The Corn Exchange, High East
Street, DORCHESTER, DT1 1HF. 7pm.
£20. dorchesterarts.org.uk.

SWEET

22 December

Lighthouse, 21 Kingland Road,
POOLE, BH15 1UG. 7.30pm. 01202
280000 / lighthousepoole.co.uk.

EVOLVER MAGAZINE FREE LISTINGS

Exhibition and performance listings should be
emailed to listings@evolver.org.uk

Please send ALL information in the following order:

Event, date(s), venue, address (including postcode),
times, admission fee (if any), contact number /
website, up to 30 words about your event



AcousticAerial

SOMETIMES THE BEST VIEW IS FROM THE AIR
WE USE DRONES TO CREATE STUNNING 4K AERIAL
FOOTAGE AND STILL PHOTOGRAPHS
acousticaerial.com • jakefranks@acousticaerial.com

Performance

November and December 2023



Aakash Odedra Company: Little Murmur

"Based on the true story of one child's struggle with letters and words, *Little Murmur* combines visual design and technology with dance and humour in an honest and heart felt conversation about the trials and tribulations of living with dyslexia, facing challenges and overcoming the odds."

4 November: Village Hall, STOCKLAND, near Honiton, EX14 9EF. 3pm. £12 / £8. 01404 881207 / villagesinaction.co.uk.

9 November: Village Hall, BROADMAYNE, DT2 8EW. 2pm. £7 / £5. 07443 659912 / artsreach.co.uk.

GRAYSON PERRY: 'A SHOW ALL ABOUT YOU'

2 November

Lighthouse, 21 Kingland Road, POOLE, BH15 1UG. 7.30pm. 01202 280000 / lighthousepoole.co.uk.
"Grayson Perry, white, male, heterosexual, able bodied, English, southerner, baby boomer and member of the establishment takes a mischievous look at the nature of identity in his new show that will make you laugh, shudder, and reassess who you really are."

'FANBOY'

2 November

Lighthouse, 21 Kingland Road, POOLE, BH15 1UG. 8pm. 01202 280000 / lighthousepoole.co.uk.
"Award-winning writer-performer Joe Sellman-Leava presents a love-hate letter to pop culture and nostalgia."

'HAGS: A MAGICAL EXTRAVAGANZA'

2 November

Village Hall, CROSCOMBE, BA5 3RA. 7pm. £12 / £8. takeart.org.

'HAGS: A MAGICAL EXTRAVAGANZA'

3 November

Jubilee Hall, DITCHEAT, BA4 6RB. 7.30pm. £12 / £8. 01749 860444 / takeart.org.

'HAGS: A MAGICAL EXTRAVAGANZA'

4 November

Town Hall, AXBRIDGE, BS26 2AR. 7.30pm. £12 / £9. 01934 732128 / takeart.org.



FASCINATING AIDA

4 November

Lighthouse, 21 Kingland Road, POOLE, BH15 1UG. 7.30pm. 01202 280000 / lighthousepoole.co.uk.
"Dillie, Liza and Adèle celebrate 40 years on the road with a brand-new show that's as filthy, hilarious, belligerent, political, poignant and outrageous as ever."

'THE GODS ARE ALL HERE'

10 November

Village Hall, NORTON-SUB-HAMDON, TA14 6SF. 7.30pm. £10. 07494 83166 / takeart.org. "Myth and legend are entwined with an intriguing modern narrative in this moving, funny and warm-hearted, one-man performance from first-class storyteller Phil Okwedy."

ROB DEERING + JOE WELLS + GRAEME COLLARD

11 November

Lighthouse, 21 Kingland Road, POOLE, BH15 1UG. 8pm. 01202 280000 / lighthousepoole.co.uk. Comedy.

'THE RAGGED TROUSERED PHILANTHROPISTS'

11 November

Village Hall, BRIANTSPUDDLE, DT2 7HT. 7.30pm. £12 / £6. 07788 100273 / artsreach.co.uk. "Neil Gore presents a solo version of the classic novel by Robert Tressell featuring projection, political conjuring tricks, live music and song."

'THE RAGGED TROUSERED PHILANTHROPISTS'

12 November

Village Hall, DRIMPTON, DT8 3RF. 7.30pm. £12 / £5. 07771 554601 / artsreach.co.uk. See 11 November.



Shaftesbury Arts Centre



'Ground Rules'

Crime & Comedy Theatre Company
4 November, 7.30pm



'Wet and Wild'

Exhibition by Nick Andrews & Tanya Hinton
8 - 21 Nov, 10 - 4 daily



Bournemouth Youth Handbell Team with St Peter's Choir

18 November, 3pm



'Rye Lane' (15)

Film
15 December
8pm



'A Christmas Carol'

Concert
16 December
7.30pm

11 - 13 Bell Street, Shaftesbury, Dorset SP7 8AR    01747 854321 • shaftesburyartscentre.org.uk

Performance

RHYTHM OF THE DANCE CHRISTMAS SPECIAL

13 November

Westlands Entertainment Venue,
Westbourne Close, YEOVIL, BA20
2DD. 7.30pm. £30. 01935 422884 /
westlandseyovil.co.uk.

'THE CORONATION OF POPPEA'

14 November

Lighthouse, 21 Kingland Road,
POOLE, BH15 1UG. 7.30pm. 01202
280000 / lighthousepoole.co.uk.
"English Touring Opera's new
production."



'CINDERELLA'

15 November

Lighthouse, 21 Kingland Road,
POOLE, BH15 1UG. 7.30pm. 01202
280000 / lighthousepoole.co.uk.

ALFIE BROWN: 'RED FLAGS GALORE'

16 November

Lighthouse, 21 Kingland Road,
POOLE, BH15 1UG. 8pm. 01202
280000 / lighthousepoole.co.uk.
Comedy.

'SWAN LAKE'

16 November

Westlands Entertainment Venue,
Westbourne Close, YEOVIL, BA20
2DD. 7.30pm. £22.50. 01935 422884 /
westlandseyovil.co.uk. "The greatest
of all romantic ballets."

JOHN OSBORNE: 'JOHN PEEL'S SHED'

16 November

Village Hall, WOOTTON
COURTENAY, TA24 8RH. 7.30pm.
£10. 01643 841067 / takeart.org. "In
2002, John Osborne won a box of
records in a competition on John
Peel's Radio 1 show. This storytelling
show is an ode to radio, those
records that were once owned by
John Peel, and anyone who's ever
sought solace in wireless."



Oddbodies: King Lear

"Armed with only a drum, a guitar, a knife and a chair, the tragic trajectory of Lear's demise is presented to you from the point of view of his long suffering and ever-loyal fool. The bastard Edmund, haughty Goneril, poor deluded Gloucester, oily Oswald, sweet Cordelia, mad Tom - all the characters from this sad and sorry tale are brought to glorious life before your very eyes. Blindness, betrayal, delusion, deceit, love, loyalty, lust and greed; it's all here in this fast paced, funny, poignant and ultimately heartbreaking production, told with all of Oddbodies' trademark physical ingenuity and visual flair."

24 November: Village Hall, BUCKLAND NEWTON, DT2 7BZ.
7.30pm. £12 / £5. 01300 345455 / artsreach.co.uk.

25 November: The Hut, POWERSTOCK, DT6 3TB. 7.30pm. £12 / £5.
01308 485730 / artsreach.co.uk.

JOHN OSBORNE: 'JOHN PEEL'S SHED'

17 November

Village Hall, STOGUMBER, TA4 3TG.
7.45pm. £10 / £8. 07553 170819 /
takeart.org. See 16 November.

'THE NUTCRACKER'

17 November

Westlands Entertainment Venue,
Westbourne Close, YEOVIL, BA20
2DD. 7.30pm. £22.50. 01935 422884 /
westlandseyovil.co.uk.



THE SCUMMY MUMMIES

17 November

Lighthouse, 21 Kingland Road,
POOLE, BH15 1UG. 7.45pm. 01202
280000 / lighthousepoole.co.uk.
"Ellie and Helen celebrate a decade
of scumminess by bringing all their
most-loved songs, sketches, and
stand-up together for a night that
will make you laugh till you wee."

'MODEL VILLAGE'

17 November

Village Hall, CHILD OKEFORD, DT11
8EX. 7.30pm. £12 / £5. 01258 861621 /
artsreach.co.uk. "Playful and
subversive new satire."

'MACBETH'

17 November

Barnfield Theatre, Barnfield Road,
EXETER, EX1 1SN. 7.45pm. £15. 07855
090589 / southdevonplayers.com.
"Dramatic new adaptation
featuring the original text, set in a
post-World War 3, near-future
wasteland."

SHERBORNE TIMES

A MONTHLY CELEBRATION OF PEOPLE, PLACE AND PURVEYOR

OUT NOW AND ONLINE

sherbornetimes.co.uk



George Egg: Set Menu

"George Egg is the award-winning, multi-sell-out, international-touring comedian who cooks. George returns from the Edinburgh Festival Fringe with a show comprising the best bits from his previous acclaimed comedy-with-cooking shows, plus a few new surprises. Over the past half-decade George has toured three shows and cooked over a thousand dishes, all of them in front of a live audience and none of them with a kitchen. Revisiting those unlikely environments armed with the chef's skills he's honed, expect to learn how to make food on a train with a laptop, in a shed with power tools and in a hotel room with the appliances they unwittingly provide you with. Three plates of gourmet food prepared in the most unconventional of ways and with the opportunity to taste the results at the end. It's time for the funniest recipes and the most delicious jokes."

18 November: Village Hall, WINTERBORNE STICKLAND, DT11 ONT. 7.30pm. £12 / £5. 01258 880920 / artsreach.co.uk.

GONZO MOOSE: 'IS THAT A BOLT IN YOUR NECK?'

17 November

Village Hall, HATCH BEAUCHAMP, TA3 6SG. 7.30pm. £11 / £9. 01823 481909 / takeart.org. "Hammer Horror for all the family."

'MODEL VILLAGE'

18 November

Village Hall, LYTCHETT MATRAVERS, BH16 6DD. 7.30pm. £12 / £5. 07795 467666 / artsreach.co.uk. See 17 November.

'DO ZOMBIES DREAM OF UNDEAD SHEEP?'

18 November

The Lyric Theatre, 9 Barrack Street, BRIDPORT, DT6 3LX. 7pm. £10. 07921 720915. "A one-man (and one puppet) musical adventure."

JOHN OSBORNE: 'JOHN PEEL'S SHED'

18 November

The Lord Nelson, NORTON-SUB-HAMDON, TA14 6SP. 8pm. £11. takeart.org. See 16 November.

MINIMA: 'THE LODGER'

19 November

Caryford Community Hall, CARYFORD, BA7 7JJ. 2pm. £12. takeart.org. "Bristol-based four-piece band specialising in live accompaniment to screenings of classic silent films."

'MODEL VILLAGE'

19 November

Community Hall, LITTON CHENEY, DT2 9AU. 3.30pm. £12 / £5. 01308 482514. See 17 November.



'THE WOMAN IN BLACK'

21 - 25 November

Lighthouse, 21 Kingland Road, POOLE, BH15 1UG. 7.45pm (Tuesday and Saturday matinees 2.30pm). lighthousepoole.co.uk.

DOMINIC KELLY: 'MARA'

25 November

Village Hall, MILBORNE ST ANDREW, DT11 OJX. 7.30pm. £12 / £5. 01258 839060 / artsreach.co.uk. "Performance storyteller Dominic Kelly has an international reputation for dynamic, powerful and entertaining work, you'll be transported, entertained, immersed... and a walk in the woods might never feel the same."

DOMINIC KELLY: 'MARA'

26 November

Village Hall, SANDFORD ORCAS, DT9 4RX. 7.30pm. £12 / £5. 01963 220208. See 25 November.

LIVING SPIT: 'A CHRISTMAS CAROL'

27 November

Village Hall, CHETNOLE, DT9 6NU. 7.30pm. £12 / £5. 01935 873555 / artsreach.co.uk. "A feast of festive foolery that'll have you splitting your sprouts with laughter!"

PAPER BIRDS: 'FEEL ME'

29 November

The Corn Exchange, High East Street, DORCHESTER, DT1 1HF. 6.30pm. £12 / £10. 01305 266926.

'TWISTED CHRISTMAS'

1 December

Allendale Community Centre, WIMBORNE, BH21 1AS. 7.30pm. £12 / £6. 01202 887247 / artsreach.co.uk.

GONZO MOOSE: 'IS THAT A BOLT IN YOUR NECK?'

1 December

Jubilee Hall, DITCHEAT, BA4 6RB. 7.30pm. £12 / £8. 01749 860444 / takeart.org. See 17 November.

Let's get creative!

At Aztec Media, we offer tailored creative services for artists, galleries, and art venues, including web design, graphic design, photography, and social media campaigns. Our expertise helps clients stand out in a competitive landscape while allowing them to focus on what they do best - being creative.



WEB DESIGN // GRAPHIC DESIGN // PRINT
PHOTOGRAPHY // SOCIAL MEDIA // SEO

01935 477 073 | aztec.media

Performance



Yukon Ho!

"A funny, bizarre, dark and (mostly) true, one-woman, cabaret-style guide to surviving an unbelievably mad life in Canada's frozen north."

11 November: Bridport Arts Centre, 9 South Street, BRIDPORT, DT6 3NR. 7.30pm. £16 / £14. 01308 424204 / bridport-arts.com.

GONZO MOOSE: 'IS THAT A BOLT IN YOUR NECK?'

2 December
Catholic Church Hall, CHEDDAR, BS27 3HU. 7pm. £12 / £10 / £8. 07533 000984 / takeart.org. See 17 November.

'TWISTED CHRISTMAS'

2 December
Village Hall, HALSTOCK, BA22 9SG. 7.30pm. £12 / £5. 01935 891744 / artsreach.co.uk.

'TWISTED CHRISTMAS'

3 December
Hall, STALBRIDGE, DT10 2NF. 7.30pm. £12 / £5. 01963 362978 / artsreach.co.uk.

'THE MERRY ADVENTURES OF ROBIN HOOD'

8 December
Village Hall, WEST STAFFORD, DT2 8AG. 6.30pm. £10 / £5. 07968 633834 / artsreach.co.uk.

'THE MERRY ADVENTURES OF ROBIN HOOD'

9 December
Village Hall, BURTON BRADSTOCK, DT6 4QD. 6pm. £10 / £5. 07821 363316 / artsreach.co.uk.

PAUL TONKINSON + WAYNE THE WEIRD + JAMES ELLIS

9 December
Lighthouse, 21 Kingland Road, POOLE, BH15 1UG. 8pm. 01202 280000 / lighthousepoole.co.uk. Comedy.

'MACBETH'

16 December
Village Hall, 15 School Road, KINGSKERSWELL, Newton Abbot, TQ12 5DJ. 7pm. £10 / £8. southdevonplayers.com. See 17 November.

'A WINTER'S TAIL'

17 December
Bridport Arts Centre, 9 South Street, BRIDPORT, DT6 3NR. 11am and 2pm. £12 / £6. bridport-arts.com.

'TWISTED CHRISTMAS'

17 December
Village Hall, STOCKLAND, near Honiton, EX14 9EF. 7.30pm. £12 / £10. villagesinaction.co.uk.



DAVID MYNNE: 'A CHRISTMAS CAROL'

19 and 20 December
Lighthouse, 21 Kingland Road, POOLE, BH15 1UG. 7.30pm. 01202 280000 / lighthousepoole.co.uk. "Mesmerising one-man performance of Charles Dickens' timeless, transformative story."

EVOLVER MAGAZINE

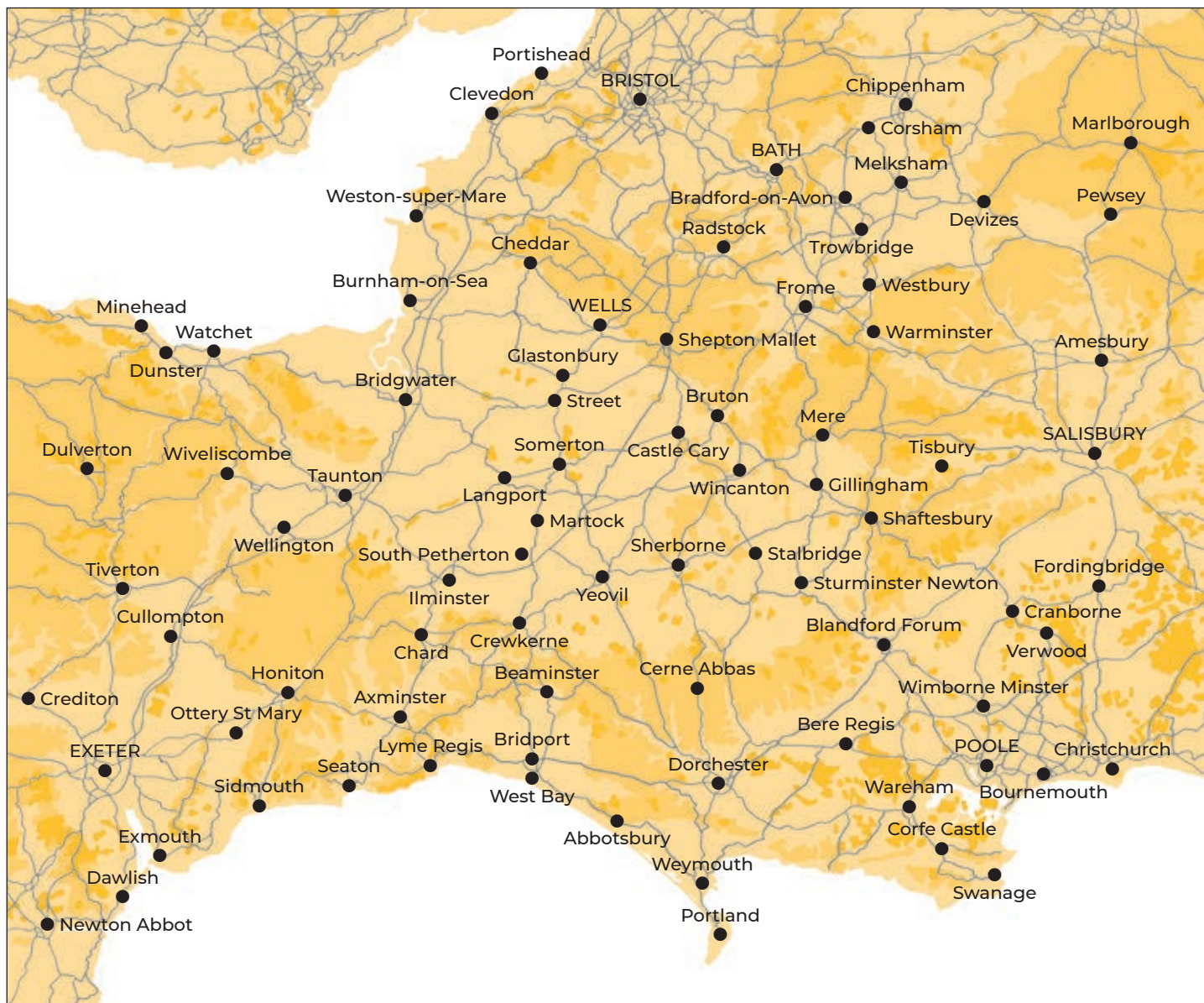
DEADLINE FOR NEXT ISSUE

January and February 2024

THURSDAY 7 DECEMBER

EVOLVER MAGAZINE

WESSEX



Follow **EVOLVER** MAGAZINE on Instagram

evolvermagazine



EVOLVER MAGAZINE

THE WESSEX ARTS AND CULTURE GUIDE

Editor SIMON BARBER

Assisted by SUZY RUSHBROOK

News Editor SUZY RUSHBROOK
suzy@evolver.org.uk

Evolver Writer FIONA ROBINSON
fionarobinson.com

Graphic Design SIMON BARBER

Front Cover
MYCELIUM HOUSE by HENNY BURNETT
Photograph by Martin Urmson

EVOLVER MEDIA

8 BUCKLAND ROAD, PEN MILL TRADING ESTATE,
YEovil, SOMERSET BA21 5EA



Email simon@evolver.org.uk

Telephone 01935 808441

Website evolver.org.uk

Instagram [evolvermagazine](https://www.instagram.com/evolvermagazine)

Published by EVOLVER MEDIA LIMITED

Pre-Press by FLAYDEMOUSE
01935 479453 / flaydemouse.com

Printed by STEPHENS & GEORGE
stephensandgeorge.co.uk

Distributed by ACOUSTIC
07397 853006 / acousticdistribution.co.uk

Website by AZTEC MEDIA

DEADLINE FOR EVOLVER MAGAZINE 135

January and February 2024
THURSDAY 7 DECEMBER

Outlets and Sponsors

EVOLVER MAGAZINE is available **FREE** at the following Wessex outlets:

ABBOTSBURY: Abbotsbury Studio, Dancel Gallery. AXMINSTER: Archway Bookshop, Axminster Arts Café, Sublyme Café. BATH: Bath Artists' Studios, Beaux Arts, The Bell Inn, The Edge / ICIA, Holburne Museum of Art, Michael Tippett Centre, University of Bath, Victoria Art Gallery. BEAMINSTER: Art and Beyond, Little Toller Books. BLANDFORD: Blandford Fashion Museum, Bryanston Arts Centre, Forum Café, Forum Framers. BOSCOMBE: Artcetera. BOURNEMOUTH: All Fired Up, Miramar Hotel, Pavilion Dance, Royal Bath Hotel, Russell-Cotes Museum & Art Gallery. BOWER HINTON: The Hollies Hotel. BRADFORD ON AVON: Wiltshire Music Centre. BRIDGWATER: Bridgewater Arts Centre, Engine Room. BRIDPORT: Art Unlimited, Bridport Arts Centre, Bridport Old Books, The Bull Hotel, Clocktower Records, Literary and Scientific Institute, Lyric Theatre, Millside Picture Framing. BRISTOL: Arnolfini, Bocabar, The Bristol Artisan, Bristol Beacon, Bristol Fine Art, Centrespace, Clifton Fine Art, Create Centre, Folk House, Jamaica Street Artists, Lime Tree Gallery, Bristol Old Vic, PRSC Gallery, RWA, Spike Island, St George's, Tobacco Factory, Trinity Centre, UWE, Watershed. BROADWINDSOR: Redlands Yard. BRUTON: At The Chapel, Hauser and Wirth. BUDLEIGH SALTERTON: Brook Gallery. BURNHAM ON SEA: Princess Theatre & Arts Centre, Seabreeze Gallery. CASTLE CARY: Bailey Hill Bookshop, David Simon Gallery, Trowbridge Gallery. CHARD: Art Café, Barleymow's, Hornsbury Mill Hotel. CHARLTON: Glebe Gallery. CHARMINSTER: Flux Art Supplies. CHEDDAR: Cheddar Art School, Sketch Café. CHEDDON FITZPAINE: Hestercombe Gallery. CHESIL BEACH: Fine Foundation Centre. CHIPPENHAM: Chippenham Museum. CHRISTCHURCH: Hatch Gallery, Hayloft Gallery, Red House Museum, Regent Centre. CLEVEDON: Fizz Gallery, Studio 3. CORFE CASTLE: Boilerhouse Gallery, Gallery 41, Morton House Hotel, Village Stores. CORSHAM: Pound Arts. CREWKERNE: Art4All / ArtyCrafty. CROCKERTON: Bull Mill Arts. CROWCOMBE: Halsway Manor. CULLOMPTON: Cullompton Community College. CULMSTOCK: The Strand Stores. DEVIZES: Wiltshire Museum. DORCHESTER: Dorchester Arts, Duke's, Frank Herring & Sons, Gallery on The Square, The Little Keep, Vinyl Van. EAST LAMBROOK: East Lambrook Manor Gardens. EXETER: Academy of Music, Barnfield Theatre, The Cavern, Corn Exchange, Exeter School of Art, Glorious Art Cafe, Phoenix Arts Centre, Royal Albert Memorial Museum, Southgate Gallery. FROME: Bat Print Studio, Black Swan Arts, Cheese and Grain, Fiat Lux, Merlin Theatre, Mount, Raves From The Grave, Rook Lane Arts, Rise Centre, Whittox Gallery. GILLINGHAM: The Idea Works, Slade Centre. GLASTONBURY: Abbey Muse Gallery, Bocabar, Facets Of Avalon,

Glastonbury Galleries, Heart Of The Tribe Gallery, Red Brick Building, Rural Life Museum. HEMYOCK: Healthy Living Centre. HESTERCOMBE: Hestercombe Gallery. HIGHCLIFFE: In The Frame. HOLTEN HEATH: Holton Lee. HONITON: The Beehive, Boston Tea Party, Hybrid Gallery, School Of Art And Wellbeing, Strummer Pink, Thelma Hulbert Gallery. ILMINSTER: Courtyard Gallery Cafe, Dillington House, Ilminster Arts Centre. KEYNSHAM: Chocolate Quarter. LANGPORT: 4 Every Cloud, Art Tea Zen, Hanging Gallery, Shakspeare Glass. LYME REGIS: Blue Lias, Coombe Street Gallery, Fine Art Framing, Marine Theatre, Studio 19. LYTCHETT MINSTER: Barn Cafe, Courtyard Craft Centre. MARLBOROUGH: Framemakers, Rabley Contemporary Drawing Centre. MARTOCK: Martock Gallery Yandles Cafe. MILTON ABBAS: Dorset Crafty Barn, Luccombe Hub. MINEHEAD: Courtyard Framing, Leo Davey Gallery, Regal Theatre. MORCOMBELAKE: Artwave West. MUCHELNEY: John Leach Gallery. NEW MILTON: Forest Arts. NEWTOWN: R. C Arts. NORTH CURRY: Community Café. OTTERTON: Otterton Mill. PENN HILL: Josephine Wall Shop. PEWSEY: McNeill Gallery. POOLE: Arts University Bournemouth, Boiler Room Records, Bournemouth University Atrium Gallery, Guildhall Gallery, Lighthouse, Gallery Upstairs, Originals, Poole Museum, Poole Violins, Towngate Gallery And Framing. PORLOCK: Churchgate Gallery, Melody Art. PORTLAND: B-Side Outpost, White Stones. POUNDBURY: Gallery On The Square, Store 6. SALISBURY: City Hall, Fisherton Mill, Framemakers, Noble Art Supplies, Salisbury Arts Centre, Salisbury Museum, Salisbury Playhouse, Studio 53, Wiltshire Gallery, Young Gallery. SEATON: Arts Café, Savooni Art Gallery. SEAVINGTON: Village Shop. SHAFTESBURY: The Cygnet, Grosvenor Hotel, Pictureframes, Shaftesbury Arts Centre. SHEPTON MALLETT: One Craft Gallery. SHERBORNE: Artslink, Elementum Gallery, New Digby Hall, Old Barn Framing Gallery, Winstone's. SIDMOUTH: East Devon Art Academy, Flo and Us, Kennaway House, Winstone's. SOMERTON: ACE Arts, Gifted Company & Gallery Coffee Shop. SOUTH CADBURY: Chapel Cross Tea Rooms. SOUTH PETHERTON: David Hall. STALBRIDGE: Dike & Sons. STOBOROUGH: Furzebrook Studios. STOKE ST GREGORY: Willow & Wetlands Centre. STOURHEAD: First View Gallery. STREET: Millfield School Atkinson Gallery, Strode Theatre. STURMINSTER NEWTON: The Exchange, Poet's Corner, Wessex Photographic. SWANAGE: 4Matt Framers and Gallery, Durlston Castle, Hollinghead Studio Gallery, L'Artishe Gallery, Mowlem Theatre, Mulberry Bush Gallery, Purbbeck New Wave Gallery, Quarr Gallery, Sansom Gallery. SYMONDSBURY: Sou'-Sou'-West. TAUNTON: Brewhouse Theatre, CIC CIC, Fine Art And Framing, Jane

Amour, Mount Somerset Hotel, Quantock Art And Framing, Queen's College, Tacchi-Morris Arts Centre, University Centre Somerset. TINCLETON: Tincleton Gallery. TISBURY: Messums Wiltshire. TIVERTON: Lantic Gallery. TROWBRIDGE: Arc Theatre, Court Street Gallery, Drawing Projects, The Lamb, Trowbridge Museum. VERWOOD: Campbell & Rose Gallery, The Hub. WAREHAM: Creative Gallery, Priory Hotel, Rex Cinema. WATCHET: East Quay, Watchet Gallery. WELLINGTON: Old Brick Workshop. WELLS: A2 Gallery, Andelli Art, Bishop's Eye, Good Earth, Heritage Courtyard Studios, Somerset Guild of Craftsmen Gallery and Shop. WEST BAY: Sladers Yard. WEST COKER: Lanes, Old School Room. WESTHAY: Somerset Crafts. WESTON-SUPER-MARE: Frame Station, Playhouse, Weston College. WEYMOUTH: Weymouth College, Weymouth Pavilion. WILLITON: Breeze Art Gallery. WIMBORNE: Allendale House, Square Records, Walford Mill Craft Centre. WINSCOMBE: Sidcot Arts Studio. WIVELISCOMBE: Community Office. WOODBURY: Woodbury Studio Gallery. WORTH MATRAVERS: Burngate Stone Centre. WRINGTON: Barleywood Studios. YEOVIL: Octagon Theatre, Yeovil Art Space. YETMINSTER: Old School Gallery.

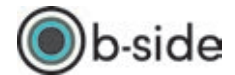
Plus selected TOURIST INFORMATION CENTRES and LIBRARIES throughout Wessex

EVOLVER SPONSORS

ACE Arts
Acoustic Distribution
Art And Beyond
Artcetera
Aztec Media
B-Side
Black Swan Arts
Boilerhouse Gallery
Bridport Arts Centre
Bridport Contemporary
Close Ltd
The Creative Gallery
Dorset Visual Arts
East Quay
Gallery on the Square
Heart of the Tribe Gallery
Shaftesbury Arts Centre
The Slade Centre
Sladers Yard
Somerset Art Works
Southern Contemporaries
Sou'-Sou'-West Gallery
Tincleton Gallery
The Vanner Gallery
Walford Mill
Yeovil Art Space

Our **EVOLVER SPONSORS** make Evolver Magazine possible. We couldn't do it without their ongoing support and advertising, so we make sure they get priority coverage in these pages.

If you'd like to join them, please email simon@evolver.org.uk to find out about our Sponsorship offer (for example our quarter page Evolver Sponsors pay £175 instead of £250 for each bi-monthly advert).



Elisabeth Frink **A View from Within**

**Dorset Museum
& Art Gallery
Dorchester**

**2 December
2023
- 21 April
2024**



**Dorset
Museum
& Art Gallery**

Artist copyright © in Elisabeth Frink Images courtesy of Bree and Tully Jannet

**Wessex
Museums**



Supported using public funding by
**ARTS COUNCIL
ENGLAND**



**Duke's
200**
Anniversary

dorsetmuseum.org