

EVOLVER MAGAZINE

THE FREE WESSEX ARTS AND CULTURE GUIDE





WHODOWE THINKWEARE?

ONE ISLAND, 1000 STORIES

05 - 08 Sept 2024 | Portland, Dorset

+ b-side fringe 31 Aug - 8 Sept

b-side.org.uk

Featuring:

Dan Babei | Dhaqan Collective

Deborah Bowness | Gil Muallem-Doron

Harald Smykla | Kirstie Macleod | Liz Hingley

Miss High Leg Kick | Mohammad Barrangi



VISUALART.LIVEART.SOUND.FILM



Supported using public funding by
**ARTS COUNCIL
ENGLAND**



PORTLAND
MARINA



CBReid
Chartered Accountants

EVOLVER MAGAZINE 138

July and August 2024



Exhibit A

Jeremy Gardiner: Winspit

Acrylic and mixed media on poplar panel, 120 x 90 cm, 2022

ARTIST'S STATEMENT: "My landscape paintings are a way of interpreting marks in time and distilling them down to convey a story in symbolic form. For the paintings, I start with slabs of raw poplar panel. Renaissance artists used native poplar wood panels for altarpieces, recognised for its lightness, strength and uniform grain. I choose to use these solid bases in order to cut, scour and sand the surface, adding and subtracting layer upon layer. The deckle edge is cut to make reference to the slabs of Purbeck limestone seen in Quarries that I visit in Dorset. Areas of colour are continuously added, sanded down and over-painted, then drawn on or scratched through to expose the layers beneath, mimicking the action of weather on the landscape, and the accretion and erosion of surfaces over time. This process, reminiscent of a geological excavation, combined with the use of colour and texture, reinforces the sense of time and antiquity in the work, offering glimpses of earlier formations and indicating the passage of time."

JEREMY GARDINER: 'TURNING THE TIDE'

20 July - 13 October: The Sherborne, Sherborne House, Newland, SHERBORNE, DT9 3JG. Monday - Saturday 10am - 5pm, Sunday 11am - 4pm. thesherborne.uk / jeremygardiner.co.uk.

Headlines

July and August 2024



George Biles: King of Signwriters

A major retrospective celebrating the remarkable talents of Bridport's Master Signwriter, George Biles, will take place across Bridport this August.

Frederick George Everleigh Biles (1900 - 1987) was a talented signwriter, calligrapher and pictorial painter who lived in Bridport his entire life. Born in North Allington, he spent his childhood immersed in the hustle and bustle of this industrious market town and its nearby port at West Bay. All with a backdrop of picturesque countryside, this provided a valuable visual resource for his 75 year long career.

The exhibition will showcase a selection of his original artworks from the local area, pictorial pub signs from Palmers Brewery, 100 year old canvas backdrops for Bridport Pantomime Players, and a variety of other

works loaned from private collections - a body of work that truly celebrates the town. There will also be the opportunity to experience a recreation of his studio, brushwork workshops and live demonstrations, exploring and celebrating the benefits and pleasures of an artistic career.

Thanks to the enthusiasm of Jemma Thompson, Heritage Lottery funding and much local support, not only has this exhibition of work been made possible, but also the research and digitisation of the vast collection of pub signs held by Palmers Brewery. Jemma, a fellow artist and signwriter, has been passionate about George's work for many years, and has now succeeded in her pursuit of George's artistic recognition and lasting legacy.

Suzy Rushbrook

GEORGE BILES: 'KING OF SIGNWRITERS' 1 - 29 August

Bridport Arts Centre, 9 South Street, BRIDPORT, DT6 3NR. Tuesday - Saturday 10am - 4pm. 01308 424204 / bridport-arts.com. *Display of pantomime screens and backdrops.*

Royal British Legion Hall, Victoria Grove, BRIDPORT, DT6 3AD. Tuesday - Saturday 10am - 4pm. *Re-creation of George's studio with a selection of pictorial pub signs and other images of George at work.*

Bridport Museum, 25 South Street, BRIDPORT, DT6 3NR. Tuesday - Saturday 10am - 4pm. 01308 458703 / bridportmuseum.co.uk. *Display of the original 'Spirit of Bridport' town sign.*

bridport-tc.gov.uk

MICROLIGHT • SKA-KIVES • SIMON CHESTERFIELD • THE RUM BLOSSOMS • FISHEYE
BAD UNCLE • WARTHOG • WHISKEY EMBERS • ELVIS 56

SHERBORNE SUMMER FESTIVAL

Saturday 6 July, Pageant Gardens, Sherborne

LIVE MUSIC • FOOD AND DRINK • ASSORTED STALLS • 12NOON - 10PM • FREE ENTRY

Headlines



GIL MUALEM-DORON 'NEW UNION FLAG' (2020)

b-side 2024: Who Do We Think We Are?

2024 is b-side's 10th Festival! Artists from across the UK will inspire and share artworks that celebrate the theme, *Who Do We Think We Are?* - an exploration of migration stories and identity. This year's festival will be a joyous celebration of innovation, showing how local and international communities connect through creativity.

Take a journey around the island landscape and discover truly sensory artworks. Be amazed by the embroidery of *The Red Dress*, a 14-year, award winning global, collaborative embroidery project created by 380 women. Sniff the bespoke *Eau de Portland* in the Portland Scenter, hear Somalian weavings sing activated by your touch inside a Somalian aqal. Discover the *Portland SIM Project*, an exquisite combination of photography, jewellery and the ubiquitous mobile phone SIM card to create tiny 21st century lockets containing precious memories of

family and home. Sign up for a bat walk ending with Transylvanian traditional music around a campfire with Portland's own Batman and the Na' Na's. Sip coffee and have your portrait drawn on a 're-faced' £5 note. Look out for art being cycled around the streets inspired by Portland's heritage, or relax in a beautiful garden with sculpture blending Persian myths and a Portland lighthouse. Take part in a mass kite making workshop celebrating diversity, or create a seaweed print on one of Portland's beaches.

Through good times and bad times, we can support each other as artists, makers, audiences and simply as fellow human beings. Sometimes our heritage is shared and sometimes we have much to learn from each other's histories and cultures.

5 - 8 September: Various locations across the ISLE OF PORTLAND, Dorset.

b-side.org.uk

Diary Dates



ELVIS COSTELLO

PURBECK INTERNATIONAL CHAMBER MUSIC FESTIVAL

29 August - 1 September

picmf.org

B-SIDE FRINGE

31 August - 8 September

b-side.org.uk

B-SIDE FESTIVAL

5 - 8 September

b-side.org.uk

MELA GUITAR QUINTET

6 - 7 September

concertsinthewest.org

DEVON OPEN STUDIOS

7 - 22 September

devonartistnetwork.co.uk

ELVIS COSTELLO & STEVE NIEVE

18 September

lighthousepoole.co.uk

DOM JOLY

20 September

lighthousepoole.co.uk

SOMERSET ART WEEKS

21 September - 6 October

somerstartworks.org.uk

HILARY CRONIN & ASAKO OGAWA

4 - 5 October

concertsinthewest.org



Thelma
Hulbert
Gallery

seam collective: A Visible Thread

20 July - 31 August 2024

Thelma Hulbert Gallery, Elmfield House, Dowell Street, Honiton, Devon EX14 1LX
01404 45006 | info@thelmahulbert.com | thelmahulbert.com
Open: Tues - Sat 10am - 5pm | Free admission, donations welcome



thelmahulbertgallery

Image - © Jane Colquhoun. Cut from the same cloth





A Culture of Hope

Re-imagining the future with hope and creativity

6 July – 10 August
in the Make Space Gallery



Market Place, Somerton, Somerset TA11 7NB
Tuesday - Saturday 10am - 5pm • 01458 273008 • acearts.co.uk



THE DANCE OF PEOPLE AND THE NATURAL WORLD NENGI OMUKU

29 JUNE
29 SEPTEMBER
2024

11am – 6pm
Tuesday – Sunday
FREE entry
donations welcome
[@arnolfiniarts](https://www.arnolfiniarts.org.uk)
[arnolfiniarts.org.uk](https://www.arnolfiniarts.org.uk)

ARNOLFINI

EST. 1961

16 Narrow Quay Bristol BS1 4QA



PIPPY HOULDSWORTH GALLERY

RWA
Art Gallery



WINDRUSH PORTRAITS OF A PIONEERING GENERATION

**VALDA JACKSON
MISS POLLY**

25 MAY – 11 AUGUST 2024
RWA.ORG.UK

ROYAL WEST OF ENGLAND ACADEMY
QUEEN'S ROAD
BRISTOL BS8 1PX

IMAGE: © AMY SHERALD PHOTOGRAPH: ROYAL COLLECTION TRUST. EDNA HENRY, 2023



Supported using public funding by
**ARTS COUNCIL
ENGLAND**



Evolver Prize 2024

Top Fifty



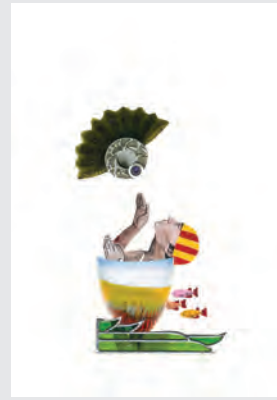
ALEX HERMON
GRMPF



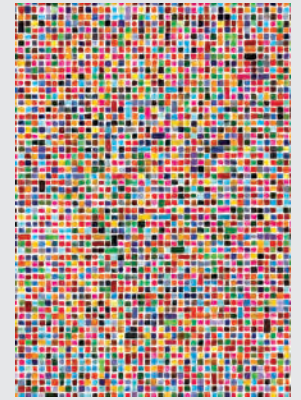
ALI CHISHOLM
Leaf Papercut



ANDREW DAVEY
Bookmarked



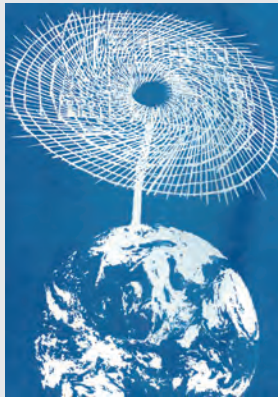
BARBARA ROLL
Against The Tide



BEE OTTWAY
Multicolours



CHRIS DUNSEATH
Sculpture & Eternity



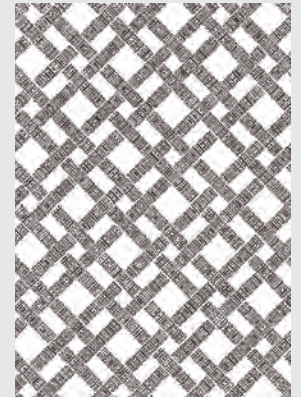
CHRIS DUNSEATH
World & Wormhole



CLARE DAY
Sorting My Brain On The Way No.8



DAVE HOLLIS
Face with Fan



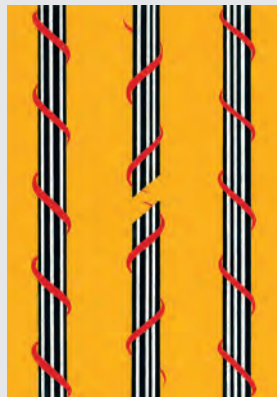
DAVID JONES
Ritual 1



DEBBIE LEE
Folly



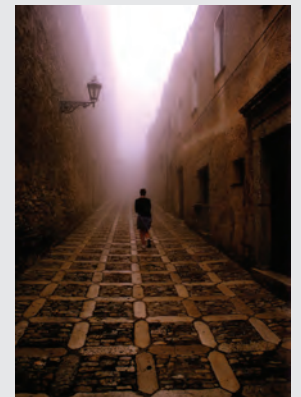
DEBBIE LEE
The Sitter



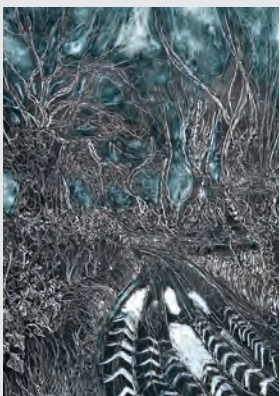
DIANE ABLITT
Clean Break



GARY DICKINS
My Butterfly Mind



GRAHAM BOOTH
Elimo Erice, Sicily



JACKIE CURTIS
Tractor Ruts



JANE BROSSARD
Guillemots in Sea Mists



JASON QUINCE
Queen

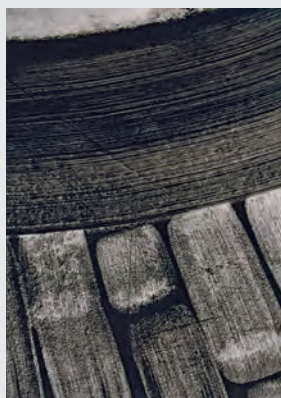


JIM DALES
Shredded

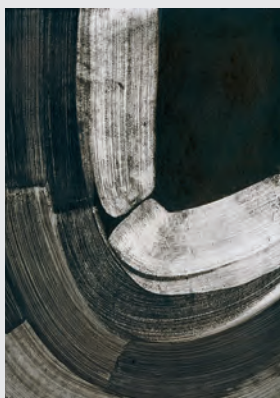


JOHN ELLIOTT
And Taylor Swift Loves Cats

Evolver Prize 2024



JOHN GAMMANS
Wind Abstract No. 7c



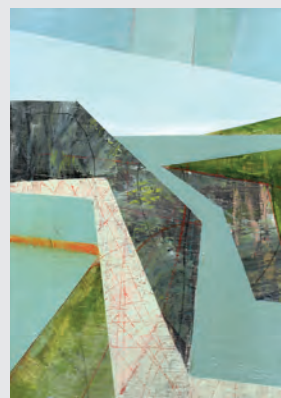
JOHN GAMMANS
Wind Abstract No. 8



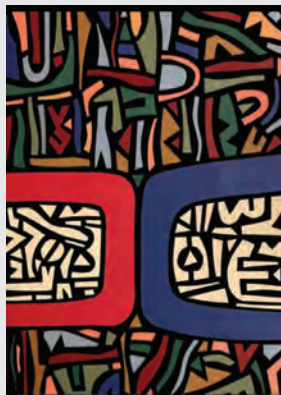
JOOLS WOODHOUSE
Set Me Free



JULIA MCKENZIE
Travellers



JULIE WINSOR
Pendower



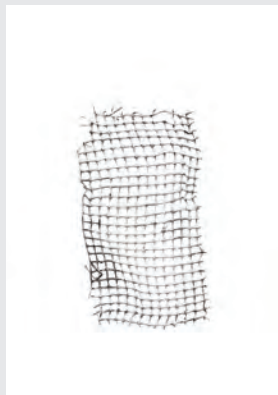
KELVIN JENKINS
Channel



LAURENCE ROWLANDS
Rangarping Iceland



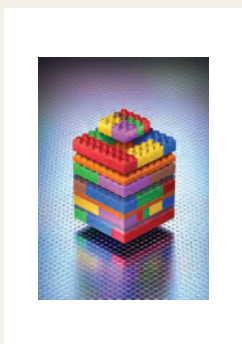
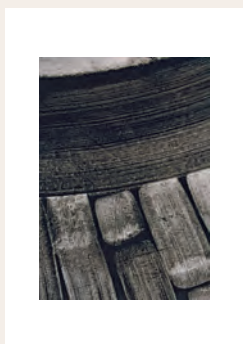
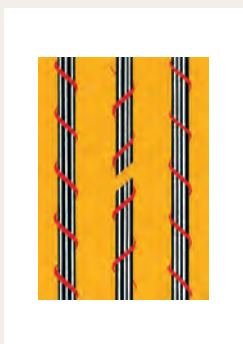
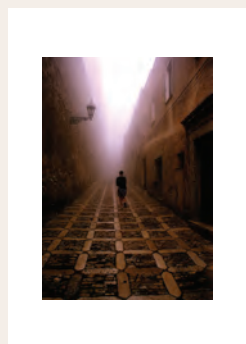
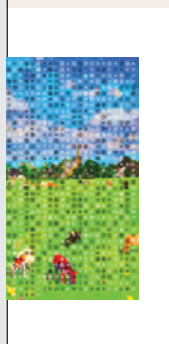
LEO DAVEY
Colourful Corvids in Black & White



LIN WALKER
Remnant 1



LIN WALKER
Remnant 2



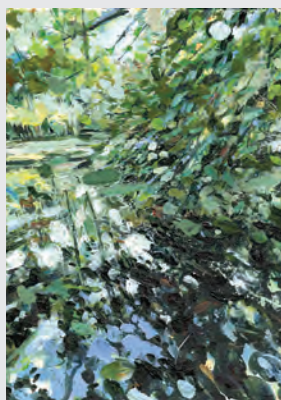
EVOLVER PRIZE 2024 EXHIBITION

6 July – 10 August

ACE Arts, Market Place, Somerton TA11 7NB • Tuesday 11am - 5pm, Wednesday - Saturday 10am - 5pm • acearts.co.uk



Evolver Prize 2024



LUCY HAWKINS
Light on The Water



MALCOLM ASHMAN
A Small Fancy



MELLONY TAPER
Domestic Use Only 1



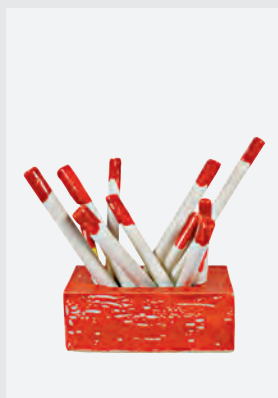
MELLONY TAPER
Domestic Use Only 2



MICHAEL COPSEY
Sudan



MOOSE ALLAIN
The Townsfolk



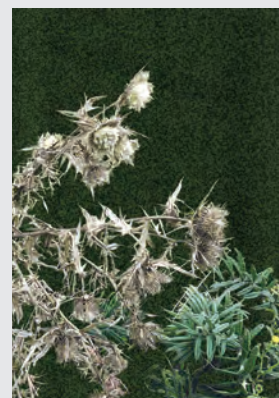
NORRIE DE MONTIGNY
Rudolf



RACHEL BYLES
Last Light On Mast Hill



RICK WILSON
Evolving



SALLY MALTBY
Ghost Thistle



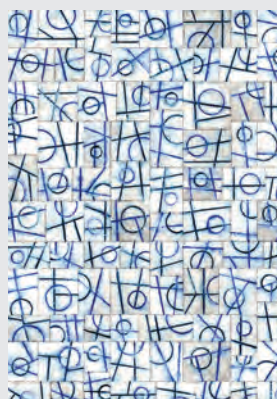
SARA TRENCHARD
Cash Point



SARAH TURNBULL
Flow



TIM DUKE
Reflective Levitation



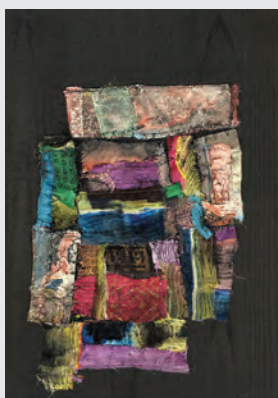
TIM EDGAR
2 Blue Circles Lines



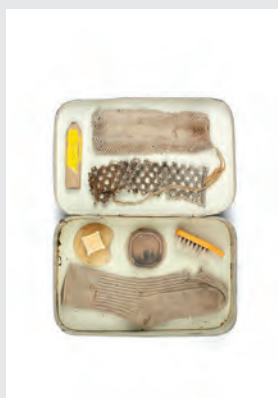
TONI DAVEY
Riff



VICKY MUENZER-JONES
Wessex Cultural Venues



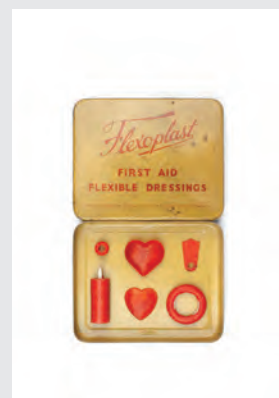
YVONNE MORTON
Boro



ZOE BARKER
Child's Sock



ZOE BARKER
Rainbow Tin



ZOE BARKER
Two Hearts

EVOLVER PRIZE 2024 SELECTION PANEL

Simon Barber (Editor, Evolver Magazine) · **Nina Gronw-Lewis** (Artistic Director, Ace Arts)
Susy Rushbrook (Curator, Arts in Hospital) · **Toby Holmes** (Winner, Evolver Prize 2023)

Visual Arts

July and August 2024



ALEX MUSTARD

Wildlife Photographer of the Year

The world-famous exhibition from the Natural History Museum, returns to Dorset Museum & Art Gallery this summer, showcasing the world's best nature photography.

Over 100 powerful photographs capture fascinating animal behaviour, spectacular species, and the breathtaking beauty of our planet. The images shine a light on stories and species from around the world and show the impact of human activity on the planet, in ways that words cannot.

From a dramatic encounter between a lioness, her two cubs and a wildebeest, battling Nubian Ibex in the mountains of the Negev desert, to a bee appearing to build a nest, many of the photographs reveal aspects of life in the wider natural world that many of us have never seen before.

Wildlife Photographer of the Year is the most prestigious event of its kind and has provided an important global platform for the best talent working in the genre for nearly 60 years. Originally launched in 1965, the competition has grown to such an extent that a staggering 49,957 entries, from photographers working in 95 different countries, were submitted for this year's event.

This resulted in an intense week for the panel of industry experts gathered at the Natural History Museum in London, who judged each entry based on its creativity, originality, and technical excellence.

19 July - 3 November: Dorset Museum & Art Gallery, High West Street, DORCHESTER, DT1 1XA. 10am - 5pm. 01305 262735 / dorsetmuseum.org.

EM

THE SOMERSET ART MAP
First edition • September 2023

THE DORSET ART MAP
Second edition • March 2024

THE WILTSHIRE ART MAP
First edition • May 2024

THE SOMERSET ART MAP
Second edition • September 2024

THE DEVON ART MAP
First edition • Early 2025

((acoustic))
DISTRIBUTION

Visual Arts

'TAKE THREE ARTISTS'

Until 2 July

Shaftesbury Arts Centre, Bell Street, SHAFTESBURY, SP7 8AR. 10am - 4pm. shaftesburyartscentre.org.uk. "Work by Dianne Reeds, Elaine Harris, and Debbie Leach."

ANNUAL OPEN 2024

Until 5 July

Ilminster Arts Centre, The Meeting House, East Street, ILMINSTER, TA19 0AN. Tuesday - Saturday 9.30am - 3.30pm. themeetinghouse.org.uk.

'SHILLITO / GRIEVE / VON RIOT'

Until 6 July

Heritage Courtyard Gallery, 6 Heritage Courtyard, Sadler Street, WELLS, BA5 2RR. 10am - 4pm. heritagecourtyardstudio.com.



THG OPEN WINNERS' EXHIBITIONS

Until 6 July

Thelma Hulbert Gallery, Dowell Street, HONITON, EX14 1LX. Tuesday - Saturday 10am - 5pm. 01404 45006 / thelmahulbert.com. "New work by THG Open 2023 winner Sharon James, featuring strongly figurative paintings presenting domestic family life. In the Lower Gallery there will be a display of photographs by Kyle Baker, winner of Best Emerging Artist."

Above: Sharon James 'The Apocalypse of Emptiness'

'EMERGENCE'

Until 7 July

Sou'-Sou'-West Arts Gallery, Symonds Estate, BRIDPORT, DT6 6HG. 10.30am - 4.30pm. 01308 301326 / sousesouwest.co.uk.



STONEY PARSONS 'GREEN HILLS FOLDING'

Frome Open Art Trail 2024

"Frome Open Art Trail returns this July, with artists in the town and surrounding villages opening their studios and workspaces to exhibit paintings, sculpture, weaving, ceramics, glass, photography, jewellery, textile and printed work. Others have chosen to show in groups in larger venues in town. Wherever you choose to go, there will be excellent opportunities to meet the artists, be inspired, share experiences and possibly come away with a piece of art to value and enjoy. A free trail brochure with maps and listings of participating artists is available in Frome's shops, cafes and galleries. It provides venue opening hours and contact details, as well as images and links to all the artists and their work. An online brochure is also available on the website."

6 - 14 July: Various locations in and around FROME, Somerset. frome-open-art-trail.co.uk

'DECENNIUM'

Until 7 July

Hestercombe Gallery, Hestercombe Gardens, CHEDDON FITZPAINE, Taunton, TA2 8LG. 11am - 4pm. hestercombe.com. "Since its 2014 opening, Hestercombe Gallery has showcased over 400 artists. This exhibition celebrates this decade with diverse landscape-themed works."

'NEW BLACK NARRATIVE'


Until 7 July

RWA, Queen's Road, BRISTOL, BS8 1PX. Tuesday - Sunday 10am - 5pm, Bank Holiday Monday 10am - 5pm. 0117 973 5129 / rwa.org.uk. "Exploring themes such as Black intimacy, Black vulnerability and Black joy, this exhibition brings together members of the Bristol Black Creatives."

SUMMER 2024 MIXED EXHIBITION

Until 7 July

Tincleton Gallery, The Old School House, TINCLETON, near Dorchester, DT2 8QR. Friday - Monday 10am - 4pm. 01305 848909. "Gallery and guest artists, including Mary Gillett, Consuelo Child-Villiers, Kim Pragnell, Ruth Ander, Philippa Headley, Imogen Bittner, Sarah Batt, and Sarah Moore."

 **BlackSwanArts**
OPEN 24



JUDGES

Sarah Bourghardt

Senior Director | Hauser & Wirth, Somerset

Dr Chris Stephens

Director | The Holburne Museum, Bath

Professor Alice Kettle

Textile Artist | Manchester School of Art, MMU

David Trigg

Art Critic | Bristol

Harry Judge

Artist | Spike Island, Bristol

EXHIBITION DATES

27 July - 15 September

Mon - Sun | 10am-4pm

2 Bridge Street, Frome BA11 1BB

blackswanarts.org.uk



BRUTON ART SOCIETY 71st Annual Exhibition



Happy in Paradise - Yvonne Auld

Affordable Art from the best Regional Artists

King's Bruton Memorial Hall
BRUTON BA10 0ED
Sat 17 - Sat 24 Aug 2024
10 - 4 daily Free entry

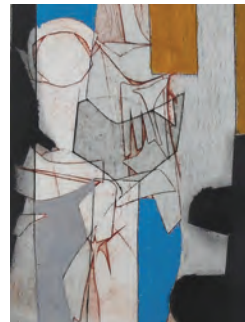


Jennifer Douglas



Brian Baxter

ARTHAUS GREATELM



Cath Bloomfield



Lynn Baxter

CERAMICS, PAINTING, COLLAGE, SCULPTURE, PRINT

JUNEFIELD, GREAT ELM, BA11 3NY

Open daily 11am - 5pm / 01373 812366

FROM OPEN ART TRAIL
VENUE 5



6 - 14 JULY

frome-open-art-trail.co.uk

WYRD FOLK



EXHIBITION OF ORIGINAL LINO CUT PRINTS BY GEMMA TRICKEY
18TH JULY - 8TH SEPTEMBER

PLEASE JOIN US FOR CELEBRATORY DRINKS ON SATURDAY 20TH JULY FROM 2-4PM

Gemma is a Somerset based printmaker working mainly in lino and woodcut. Her work features wild and wonderful characters and creatures from folklore, dreams and stories. She is inspired by the work of William Morris and Aubrey Beardsley and preoccupied with old scientific reference diagrams, the weird creatures of our natural world, buried treasure, gothic novels and the mythology of landscape and narrative.



HEART OF
THE TRIBE
ART GALLERY

EXHIBIT WITH US; WINTER OPEN EXHIBITION 2024

OCTOBER 25TH - DECEMBER 22ND

Submissions open 12th August - 18th September

Head over to our blog for more information and to see our full terms and conditions.

<https://heartofthetribes.com/blog/>

PLEASE SCAN QR CODE FOR
MORE INFORMATION ABOUT
UPCOMING EVENTS



01458 780046

Gallery@HeartofTheTribe.com

www.HeartofTheTribe.com

[f](https://www.facebook.com/HeartofTheTribeGallery) [i](https://www.instagram.com/HeartofTheTribeGallery) @HeartofTheTribeGallery

74 High Street, Glastonbury, BA6 9DZ

EXHIBITIONS | EVENTS | GIFTS & PRINTS | WORKSHOPS | HOT DRINKS | AWARD WINNING GARDEN

Visual Arts

NIGEL MOORES AND GORDON ELLIS: 'EMERGENCE'

Until 7 July

Sou'-Sou'-West Arts Gallery,
Symonds Estate, BRIDPORT,
DT6 6HG. 10.30am - 4.30pm. 01308
301326 / sousouwest.co.uk. "Exciting
painting and poetry collaboration."

'WITH CLOUDS'

Until 11 July

The Kimberley Gallery, The
Millhouse, Unit 1 Rose Mills
Industrial Estate, ILMINSTER, TA19
9PS. Monday - Saturday 10am -
4pm. 07980 946465 /
millhousearts.co.uk.



'HOUSEWORK'

Until 13 July

The Sherborne, Sherborne House,
Newland, SHERBORNE, DT9 3JG.
Monday - Saturday 10am - 5pm,
Sunday 11am - 4pm.
thesherborne.co.uk. "Housework
celebrates the history and the
many links between Sherborne
House and the arts, bringing
together some of the work created
between 1996 and 2008, inspired by
and documenting its past. Curated
by Amanda Wallwork in
association with Evolver Magazine,
the exhibition includes work by
Amanda, Balint Bolygó, Elisabeth
Frink, Jane Borodale, Jane Burden,
Jenni Cadman, Joe Stevens, Karen
Hitchcock, Kirsten Cooke, Peter
Freeman (above), Stig Evans, Tim
Burrough, and Zoë Barker."

'BOTANICAL VIBES'

Until 13 July

Art Gallery & Studio by Aga Kubish,
4 Walliscote Road, WESTON-
SUPER-MARE, BS23 1UG. Monday -
Saturday 10.30am - 5.30pm. 07715
305120 / agakubish.com. "This
exhibition explores humanity's
connection to nature through
innovative artworks depicting flora,
fauna, and landscapes."



DEBBIE LEE 'GROTESQUE DANCE' (oil on canvas, 122 x 152 cm)

Allegory

"From our earliest encounter with picture books through to sophisticated political cartoons we have all learned to interpret hidden meanings in images. A significant message of this exhibition is that of displacement and human struggle. These artists speak of journeys and tangled webs of history and despair, but also hope. The artworks are hugely emotive and focus on the issues created by war, famine and economic distress that are currently absorbing our attention as thinking feeling human beings. Many of these works are personal. The unresolved issue of the Windrush Generation is a continuing issue for Charmaine Watkiss. Beth Carter's sculpture *I don't know how far or how deep* touches on the displacement of homelessness. Debbie Lee's triptych is a response to Goya's violent and dark etchings, which have often defied interpretation. Seyed Edalatpour's starting point is Gericault's deeply disturbing painting *The Raft of Medusa*, savagely critiquing the political fallout from the terrible events following a tragic shipwreck. Karl Singporewala connects the magical tale of Narnia to his own children using Tower Bridge in London as his entry point. Ian Middleton's *Mayfly* poignantly suggests the brevity of life. Artists have always commented on current affairs and political events and their interpretations allow them and their viewers to digest them and search for answers. Confronting our demons makes them less frightening and allows us to move forward with hope for the future."

Until 21 July: RWA, Queen's Road, BRISTOL, BS8 1PX. Tuesday - Sunday 10am - 5pm, Bank Holiday Monday 10am - 5pm. Free entry. 0117 973 5129 / rwa.org.uk.

COAST! SUMMER EXHIBITION 2024

GALLERY ON THE SQUARE



Vicky Finding



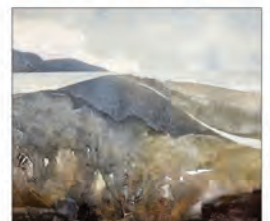
John Boyd



Debra Sweeney



Colin Willey



Philip Winstone

Queen Mother Square, Poundbury, Dorchester DT1 3BL

Mon-Sat, 9.30am to 5pm; Sundays: 11am to 4pm 01305 213322 www.gallerypoundbury.co.uk

Visual Arts



VANESSA GARDINER: 'SEA CLIFFS'
Until 14 July

Sladers Yard, WEST BAY, Bridport, DT6 4EL. Monday - Saturday 10am - 4.30pm. sladersyard.co.uk. "Clean lines, dynamic surfaces and thrilling coastal subject matter are the defining features of Vanessa Gardiner's work. This exhibition features wonderful new paintings of her beloved Boscastle, Tintagel and Godrevy."

Above: 'High Cliffs 9 (Orkney)'
(Acrylic on board, 87 x 129 cm, 2024)



JIM HUNTER
Until 14 July

Sandy Hill Arts, Sandy Hill Lane, CORFE CASTLE, BH20 5JF. 10am - 4pm. 07767 767625 / sandyhillarts.co.uk. "Recent paintings made around the landscape of the Isle of Purbeck."

WEST SOMERSET COLLEGE SIXTH FORM GROUP EXHIBITION

Until 14 July
Studio 10, East Quay, WATCHET, TA23 0AQ. 10am - 5pm. 01984 263103 / eastquaywatchet.co.uk.

'GLASTONBURY'

Until 14 July
Heart of The Tribe, 74 High Street, GLASTONBURY, BA6 9DZ. Thursday - Monday 11am - 5pm. 01458 780046 / heartofthetribe.com. "Mixed work by various artists celebrating a love for the town."



JULIE WINSOR 'TILLY WHIM' (Mixed media on canvas, 40 x 40 cm)

Waymarked

"Explore the tracks and pathways of Purbeck with the Boilerhouse Gallery's artists and makers - Jane Colquhoun, Jayne Cunliffe, Rachel Huggett, Richard Jeffery, Tony Kerins, Janet O'Kane, Frances Pollard, Julie Winsor and guests. Waymarks are a guide to travellers. They also provide a record of our passage, for ourselves and for others, through time and place. Ancient maps are the stuff of legend, and that small pile of stones can mark ages past, or yesterday's school party. A path tells us about usage and geology and the atmosphere of place. In the sky above, and over the sea, we search for paths and patterns, seeing evidence of hope in a difficult world. We live in a remarkable landscape and one that we can explore at will, thanks to the wonderful network of footpaths that cross it. The artists and makers of the Boilerhouse Gallery are based at Sandy Hill, Corfe Castle, so this landscape is at the heart of their working practice. The Gallery has been established for twenty years, relying for its success on the quality of its products - ceramics, textiles, paintings, maps, pottery, jewellery, sculpture, glass, prints and cards."

26 August - 10 September: Fine Foundation Gallery, Durlston Castle, SWANAGE, BH19 2JL. 10am - 5pm. 07398 052489

boilerhousegallery.co.uk



CARL MELEGARI

Until 20 July

Clifton Contemporary Art, 25 Portland Street, Clifton, BRISTOL, BS8 4JB. Tuesday - Saturday 10am - 5pm. 01173 179713. "Carl's new portraits reveal and explore fleeting expressions and innate personality, while revelling in the physicality of oil paint."



MOISH SOKAL: 'INTO THE UNKNOWN'

Until 20 July

Malthouse Gallery, East Lambrook Manor Gardens, Silver Street, EAST LAMBROOK, South Petherton, TA13 5HH. Tuesday - Saturday 10am - 5pm. 07940 506757 / moishsokal.co.uk.

Above: 'Leaving Tinker's Bubble'

'ABSTRACTING LYME'S PAST'

Until 20 July

Rotunda Gallery, Lyme Regis Museum, Bridge Street, LYME REGIS, DT7 3QA. Tuesday - Sunday 10am - 4pm. 01297 443370. "Artists take inspiration from the Museum's fascinating collections."



THE CREATIVE GALLERY

Showcasing ceramics, paintings, textiles, jewellery and glass by local artists




"More Than Pots"
Belinda Sales & Emily Stracey
1st - 31st July





"The Art of Stitch"
Caroline Harris
1st - 31st August

St John's Hill, Wareham, Dorset BH20 4NB t 01929 551505 e creativegallery@hotmail.co.uk
Open daily 10am-5pm

BULL MILL STUDIO 

OPEN first Saturdays- 6 July / 3 Aug / 7 Sept

BULL MILL, CROCKERTON, WARMINSTER. BA12 8AY
nickandrew.co.uk tanyahinton.co.uk 07730 400784

hanging service
 exhibitions
 classes
 curation
 space hire



professional and personal service
 - EST -
 2012

www.studio53space.co.uk
 07967186956



Eleanor Bartlett
 14 June - 27 July

45 High Street | Salisbury
vannergallery.com

VANNER GALLERY

EAST QUAY



25.05.2024 - 02.09.2024
THE ZIZI SHOW - A DEEPAKE DRAG CABARET
 Jake Elwes, Gallery 2
EAST QUAY OPEN - OPEN ABOUT IDENTITY
 Selected artists, Gallery 1

@eastquaywatchet
eastquaywatchet.co.uk
 Open daily 10am-5pm




Contains Art CIO, Charity No. 1192931, Credit: Artwork by Jake Elwes, photo by Jesse Wild

Sherborne Arts SHERBORNE ART CLUB




The Sherborne Open

Art Exhibition 2024
 Sat 20th - Sun 28th July 10am - 5pm
 (1pm on the 28th)

THE DIGBY HALL, HOUND ST, SHERBORNE, DT9 3AA

Admission Free



WWW.SHERBORNEARTS.ORG
SHERBORNEOPEN@SHERBORNEARTS.ORG

Claire Trickey - Pennington Marsh

ARTCETERA

EST. 1970

Picture Framing & Artists Materials



01202 423408 artcetera853@gmail.com 853 Christchurch Road BH7 6AR

The Dorset Arts & Crafts Showcase 2024

Friday 2nd - Tuesday 6th August
Open 10am - 4pm



Display & Sale of Work
by Members of DACA
Open Fine Art, Craft &
Photography Competitions
Guest Exhibitions
Children's Workshops
Craft Stalls
Demonstrations



Purbeck School, Worgret Road
Wareham BH20 4PF



www.dorsetartsandcrafts.org

Registered Charity 306252



Art Unlimited

The Gallery

CALL TO ARTISTS

International Open Art Competition

1st Prize £5000

Entries online 1st May - 31st July

www.art-unlimited.co.uk



**DALER
ROWNEY**



UNIQUE
FRAMECRAFT

In association with:

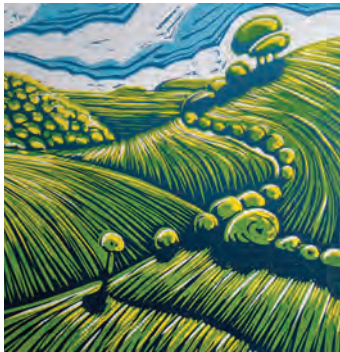
NORRSKEN



LYME BAY
DENTAL & IMPLANT CLINIC



RISE
MARKET & BAKERY



'A HEALING ENVIRONMENT: EARTH, SEA AND SKY'

Until 21 July

Art at the Heart, Royal United Hospitals, Combe Park, BATH, BA1 3NG. 8am - 8pm. 01225 824987 / artatruh.org. "Artists Lucy Hawkins, Georgina King and Jill Davies draw inspiration from the Jurassic coastline, southwest landmarks, moorland and ancient woodland. Various terrains are explored through expressive painting, illustrative printmaking, use of earth pigments and mixed media. These responses share the beauty and pleasure of being in nature to interesting juxtapositions and connections with the land."

Above: Jill Davies 'I can see the sea!' (Lino print)

PEDAS: '1924 TO TODAY'

Until 27 July

Lighthouse, 21 Kingland Road, POOLE, BH15 1UG. Tuesday - Saturday 10am - 6pm. 01202 280000 / pedas.org.uk. "Telling the story of the first 100 years of Poole & East Dorset Art Society (PEDAS), this remarkable exhibition presents historical works by some illustrious former members and spotlights the best of the last 30 years."

HAPTIC ART: 'REFLECT'

Until 27 July

Fisherton Mill, 108 Fisherton Street, SALISBURY, SP2 7QY. Monday - Saturday 9am - 5pm. 01722 415121 / fishertonmill.co.uk. "A colourful and uplifting exhibition of textiles and mixed media."



CORINNA LEIGH-TURNER 'THIS WAY'

Bruton Art Society

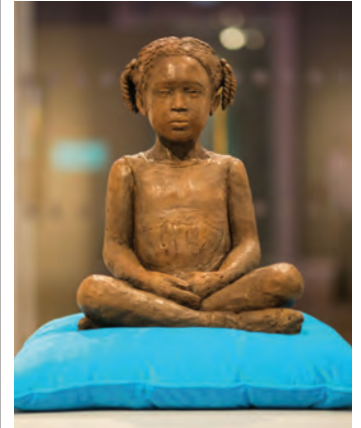
"Having celebrated their 70th anniversary last year, Bruton Art Society will be presenting their 71st annual exhibition in the beautiful Memorial Hall at King's School, Bruton. The strength and size of the exhibition has grown over the years, and last year 152 members exhibited their work, attracting 1,200 visitors over the week. This is a reflection of the many amateur and professional artists living and working in the region, with a very high standard of work on show every year."

17 - 24 August: King's Bruton Memorial Hall, BRUTON, BA10 0ED. 10am - 4pm. Free entry. 07582 218858 / brutonartsociety.co.uk.

RASHEED ARAEEN: 'CONSCIOUS FORMS'

Until 11 August

Royal West of England Academy, Queen's Road, Clifton, BRISTOL, BS8 1PX. Tuesday - Sunday and Bank Holiday Monday 10am - 5pm. £9.90 / £5.45. 0117 973 5129 / rwa.org.uk. "Pioneering work."



VALDA JACKSON: 'MISS POLLY'

Until 11 August

Royal West of England Academy, Queen's Road, Clifton, BRISTOL, BS8 1PX. Tuesday - Sunday and Bank Holiday Monday 10am - 5pm. £9.90 / £5.45. rwa.org.uk. "As part of a triple bill of exhibitions honouring global majority artists, the RWA presents a powerful and evocative installation by esteemed writer and artist Valda Jackson. Featuring spoken word, text, sculpture, and painting, this exhibition delves into concepts of the 'unfinished brain'."

'WINDRUSH: PORTRAITS OF A PIONEERING GENERATION'

Until 11 August

Royal West of England Academy, Queen's Road, Clifton, BRISTOL, BS8 1PX. Tuesday - Sunday and Bank Holiday Monday 10am - 5pm. £9.90 / £5.45. rwa.org.uk. "This moving exhibition honours the accomplishments and legacy of the Windrush Generation. Displayed are ten portraits of remarkable Caribbean-British individuals by ten artists, including Sonia Boyce MBE and Amy Sherald."



Angela Uren / Perfect Calm



BESPOKE FRAMING

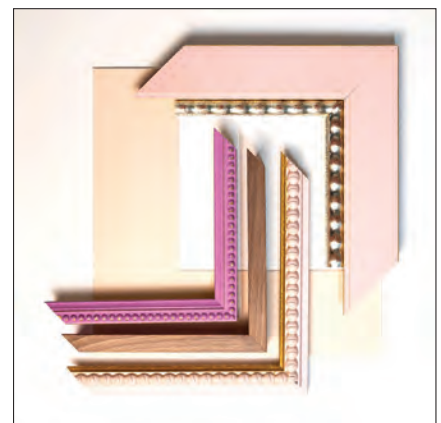
Wide range of frames to choose from
Expert help and friendly advice

ART GALLERY

Original fine art prints
Championing local and national artists

**5 LYNDEN WAY • BEAMINSTER
DORSET DT8 3AX**

Tel: 01308 800693
Email: info@artandbeyond.co.uk
artandbeyond.co.uk





ANITA KLEIN 'THE BEAUTIFUL WATER' (Linocut)

Sladers Yard Summer Print Show

"An exhibition of affordable works of art that celebrate and explore the people, the natural world, the sea and the things that make life worth living made by some of the most brilliant printmakers working today, including Laura Boswell, Martyn Brewster, Merlyn Chesterman, Anita Klein, Nick Jones, and Sally McLaren. Roger Hardy's resonant wooden sculpture and Petter Southall's eloquent furniture will also be on show throughout the summer."

20 July - 15 September: Sladers Yard, WEST BAY, Bridport, DT6 4EL. Wednesday - Saturday 10am - 4.30pm. 01308 459511 / sladersyard.co.uk.



SOMERSET PRINTMAKERS Until 1 September

Somerset Rural Life Museum, Chilkwell Street, GLASTONBURY, BA6 8DB. Tuesday - Sunday 10am - 5pm. £9.35 / £7.65 / £4.40. 01458 831197 / srlm.org.uk.

Above: Sally Hebeler 'Rooks' (Monotype)

'COAST'

Until 1 September

Gallery On The Square, Queen Mother Square, DORCHESTER, DT1 3BL. Monday - Saturday 9.30am - 5pm, Sunday 11am - 4pm. 01305 213322. "Featured artists in Gallery On The Square's summer exhibition include John Boyd, Vicky Finding, Debra Sweeney, Colin Willey, Sarah Ross-Thompson, and Philip Winstone."

'THE ZIZI SHOW'

Until 2 September

Gallery 2, East Quay, Harbour Road, WATCHET, TA23 0AQ. Monday - Sunday 10am - 5pm. 01984 263103 / eastquaywatchet.co.uk. "A deepfake drag cabaret by Jake Elwes."

EAST QUAY OPEN 2024: 'OPEN ABOUT IDENTITY'

Until 2 September

Gallery 1, East Quay, Harbour Road, WATCHET, TA23 0AQ. Monday - Sunday 10am - 5pm. 01984 263103 / eastquaywatchet.co.uk. "Open exhibition celebrating works by artists from Somerset and beyond."

ALBERT DE BELLEROCHÉ: 'A PAINTER IN PARIS'

Until 22 September

Russell-Cotes Art Gallery and Museum, East Cliff, BOURNEMOUTH, BH1 3AA. Tuesday - Sunday 10am - 5pm. £8.50 / £4.50. russellcotes.com. "Works by acclaimed artist, featuring over 60 paintings and lithographs."

'TOULOUSE-LAUTREC AND THE MASTERS OF MONTMARTRE'

Until 29 September

Victoria Art Gallery, Bridge Street, BATH, BA2 4AT. Tuesday - Sunday 10.30am - 5pm. £10 / £9 / £3.50. 01225 477233.

REX WHISTLER: 'THE ARTIST AND HIS PATRONS'

Until 29 September

The Salisbury Museum, The Kings House, 65 The Close, SALISBURY, SP1 2EN. 10am - 5pm. salisburymuseum.org.uk.



NENGI OMUKU: 'THE DANCE OF PEOPLE AND THE NATURAL WORLD'

Until 29 September

Arnolfini, 16 Narrow Quay, BRISTOL, BS1 4QA. Tuesday - Sunday 11am - 6pm. 0117 917 2300 / arnolfini.org.uk. "Nigerian artist Nengi Omuku's lush landscapes immerse human figures within nature, highlighting the relationship between both individual and collective thought and ideas of belonging."

Above: 'Days Gone By' (Oil on sanyan, 233 x 274 cm, 2023)

'FIVE GO BACK TO LYME'

1 - 11 July

Malthouse Gallery, Town Mill, LYME REGIS, DT7 3PU. 10am - 4.30pm. 07895 721689 / townmill.org.uk. "A diverse exhibition in oils, acrylic, mixed media, silk and printing."

PAMELA GREGG: 'NARRATIVE DISCOURSE'

1 - 14 July

Sou'-Sou'-West Arts Gallery, Symonds Estate, BRIDPORT, DT6 6HG. 10.30am - 4.30pm. 01308 301326 / sousouwest.co.uk.



SEA CLIFFS *until 14 July* Vanessa Gardiner • Yo Thom

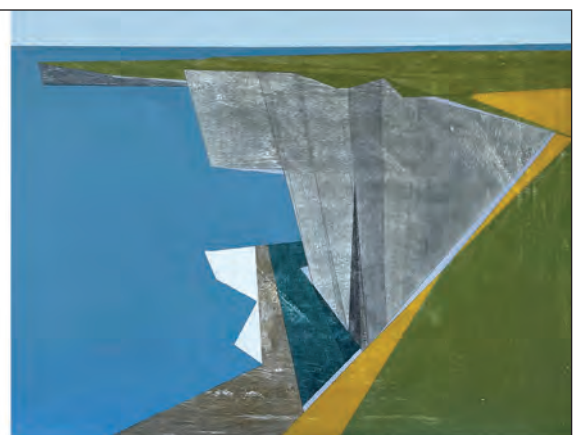
SLADERS' SUMMER PRINT SHOW

Laura Boswell • Martyn Brewster
Merlyn Chesterman • Nick Jones
Anita Klein • Sally McLaren
Roger Hardy wooden sculpture from 20 July
Petter Southall furniture

Lunch at CAFÉ SLADERS
Wednesday - Sunday* 10am - 4.30pm

SLADERS YARD

Contemporary Art & Craft Gallery tel: 01308 459511
West Bay Bridport DT6 4EL www.sladersyard.co.uk



Vanessa Gardiner High Cliffs 9 (Orkney) detail 87 x 129cm
Laura Boswell Highland Pine, early winter linocut 51.5 x 35cm

Visual Arts

BELINDA SALES AND EMILY STRACEY: 'MORE THAN POTS'

1 - 31 July

The Creative Gallery, St John's Hill, WAREHAM, BH20 4NB. Monday - Saturday 10am - 5pm. 01929 551505 / creativegallerywareham.co.uk. "Raku wall pieces and incredible cats - clay, but no pots!"

'MIDSUMMER'

1 July - 28 September

Studio 3 Gallery, Clevedon Craft Centre, Moor Lane, CLEVEDON, BS21 6TD. 10am - 4pm / studiothree.art. "Fabulous new artistic talent."

'CAPTURING A MOMENT'

2 - 7 July

Walcot Chapel, BATH, BA1 5UG. 10am - 6pm. 07734 114827. "Seven artists working in an eclectic mix of styles, mediums and themes. Textiles, photography, woodfired ceramics and paintings."

KATE DOWTY: 'LOOSE THREADS'

2 - 7 July

Eype Centre for the Arts, St Peter's Church, EYPE, Bridport, DT6 6AP. 11am - 5pm. 07760 122666 / katedowty.com. "Contemporary wallhangings made over the last 25 years by this Bridport based textile artist."

CAMILLA CLUTTERBUCK AND POLLY HUBBS

3 - 9 July

Shaftesbury Arts Centre, Bell Street, SHAFTESBURY, SP7 8AR. Monday - Saturday 10am - 4pm. 01747 855243 / shaftesburyartscentre.org.uk. "Two artists looking at landscapes and nature from different viewpoints."

THE STOURPAINE COLLECTIVE

3 - 28 July

Walford Mill, Knobcrook Road, WIMBORNE, BH21 1NL. Wednesday - Saturday 10am - 5pm, Sunday 11am - 4pm. 01202 841400 / walfordmillcrafts.co.uk. "Exciting group exhibition featuring work by Jade Phelps, Pavla Andrews, Emsie Sharp, Jason Fermor, Imogen Bittner, Rose Hatcher, Marion Roberts, Debby Kirby, Catherine Broadway, Rachel Sargent, Orsola Adlem, Alan Baggs, Paul Lewis, and Göran Hahne."



'NO BEAUTY WITHOUT STRUGGLE'

(Acrylic and oil pastel on cotton, 400 x 230 cm, 2024)

Adébayo Bolaji: In Praise of Beauty

Until 29 September: Arnolfini, 16 Narrow Quay, BRISTOL, BS1 4QA. Tuesday - Sunday 11am - 6pm. 0117 917 2300 / arnolfini.org.uk.

SCOTT MCDONALD

3 July - 30 August

Artwave West, MORCOMBELAKE, DT6 6DY. Wednesday - Saturday 10am - 5pm. 01297 489746 / artwavewest.com. "Modernist freestanding sculptures."

'THE CHROMATIC DIALOGUE PART 2'

5 - 13 July

Garden Studio, 5 Clifts Buildings, FROME, BA11 1LY. 11am - 5pm (Closed Sunday and Tuesday). 07767 703592 / colour-designs.co.uk. "Clare Lloyd and Amanda Bee collaborate using a limited palette of pigments to create semi-abstract landscapes and statement jewellery."

'ON THE WING'

5 - 17 July

Prior Shop, Unit 10, Philadelphia Street, BRISTOL, BS1 3BZ. Monday - Saturday 10am - 6pm, Sunday 11am - 5pm. 07786 990230 / lamosaics.co.uk. "Seven artists, seven mediums. A celebration of winged creatures brings together a diverse collective of wildlife artists."

EVOLVER PRIZE 2024

6 July - 10 August

ACE Arts, Market Place, SOMERTON, TA11 7NB. Tuesday - Saturday 10am - 5pm. 01458 273008 / acearts.co.uk. See front cover and pages 7 - 9.

'SWITCHBOOK'

6 July - 10 August

Make Space Gallery, ACE Arts, Market Place, SOMERTON, TA11 7NB. Tuesday - Saturday 10am - 5pm. 01458 273008 / acearts.co.uk. "Led by Somerset's arts education charity SPAEDA, this innovative collaboration brings together arts educators and artists from across the county, working side-by-side on a continuous sketchbook journey."

ALISON WEBBER: 'ARTISTIC FUSION'

8 - 14 July

Eype Centre For The Arts, Eype Church, Mount Lane, EYPE, Bridport, DT6 6AR. 10am - 4.30pm. 07955 220024 / alisonwebber.co.uk. "Monochrome photography and bold acrylic abstracts."





Richenda Todd: Plant Kin

Opening Night: Thursday 11 July, 6.30pm
Artist Talk: Thursday 1 August, 6.30pm
Runs: 12 July - 3 August

Summer Open Exhibition: Earthly Beauty

Opening Night: Thursday 8 August, 6.30pm
Runs: 8 August - 14 September

The Pound Arts Centre, Corsham, Wiltshire, SN13 9HX
(01249) 701628 | poundarts.org.uk | @poundarts



Visual Arts

'CIRCLES, LANDSCAPES AND FUSIONS'

10 - 16 July

Shaftesbury Arts Centre, Bell Street, SHAFTESBURY, SP7 8AR. Monday - Saturday 10am - 4pm. 01747 855243 / shaftesburyartscentre.org.uk.

"Exhibition featuring three Dorset artists whose individual work and styles are as complementary as they are contrasting. Paintings and colourful fused glass pieces and jewellery."



BULL MILL ARTS SUMMER OPEN STUDIOS

12 - 14 July

Bull Mill, CROCKERTON, Warminster, BA12 8AY. 10am - 5pm. 07730 400784. nickandrew.co.uk / tanyahinton.co.uk.

"Contemporary landscape painting and plein air drawing projects by Nick Andrew (above), wildlife painting on reclaimed wood by Tanya Hinton, plus jewellery by Stephanie Gilbert."

CHILCOMPTON ART CLUB

13 July

Chilcompton Sports Club, Wells Road, CHILCOMPTON, Radstock, BA3 4EY. 10.30am - 4pm. 07909 228335 / chilcomptonartclub.uk.

BRIDPORT ART SOCIETY

13 July - 4 August

Sou'-Sou'-West Arts Gallery, Symonds Estate, BRIDPORT, DT6 6HG. 10.30am - 4.30pm. 01308 301326 / sousouwest.co.uk.

ALISON ROSE: 'FLORALS'

15 July - 4 August

Sou'-Sou'-West Arts Gallery, Symonds Estate, BRIDPORT, DT6 6HG. 10.30am - 4.30pm. 01308 301326 / sousouwest.co.uk.



MARGARET HASTED 'CORNFLOWERS AND PEONIES IN WHITE VASE'

Sherborne Open

"The annual Sherborne Open Art Exhibition is one of Wessex's most popular events, showcasing an enormous wealth of talent. Independently judged, open to all with no pre-selection, the exhibition displays a rare spontaneity, freshness and diversity."

20 - 28 July: The Digby Hall, Hound Street, SHERBORNE, DT9 3AA. 10am - 5pm (except Sunday 28 July, 10am - 1pm). 01935 816368 / sherbornearts.org.

GAYNOR WARING AND MARTIN BRIERLEY: 'SENSE OF PLACE'

17 - 23 July

Shaftesbury Arts Centre, Bell Street, SHAFTESBURY, SP7 8AR. Monday - Saturday 10am - 4pm. 01747 855243.

"Intimate exhibition evoking atmospheric memories of place and time."

JOE PRESTON: 'CLOSING THE LOOP'

20 July - 25 August

Studio 10, East Quay, WATCHET, TA23 0AQ. 10am - 5pm. 01984 263103. "A new two-channel film installation that examines the impact of climate change on the food and waste cycles."

SEAM COLLECTIVE: 'A VISIBLE THREAD'

20 July - 31 August

Thelma Hulbert Gallery, Dowell Street, HONITON, EX14 1LX. Tuesday - Saturday 10am - 5pm. 01404 45006 / thelmahulbert.com.

"Contemporary textile collective seam explore the visibility and invisibility of thread through a diverse range of textile disciplines and perspectives."



ARTIST COLLECTIVE

22 - 31 July

Kennaway House, SIDMOUTH, EX10 8NG. 10am - 4pm. £1. 07895 117348 / artistcollective.uk. "Exhibition showing a diversity of mediums and styles by eight artists."

Above: Lynda Kettle

HILARY BUCKLEY: 'LANDMARKS'

22 July - 2 August

The Malthouse Gallery, Town Mill, LYME REGIS, DT7 3PU. 10am - 5pm. 01297 444111 / dorset-artist.uk. "Vibrant paintings depicting the local Dorset landscape."

'MAPPING THE UNDERCLIFFS NATURE RESERVE'

23 July - 13 September

Rotunda Gallery, Lyme Regis Museum, Bridge Street, LYME REGIS, DT7 3QA. Tuesday - Saturday 10am - 5pm, Sunday 10am - 4pm. 01297 443370 / lymeregismuseum.co.uk.

"A unique exhibition of detailed hand-drawn maps of the amazing wildlife and landmarks in and around the Dorset coast's Undercliffs National Nature Reserve, drawn by local nature journaling artist Alex Boon."



SUMMER SIZZLERS

This month, Bournemouth Arts Club members are out en plein air, working on a bumper crop of new works for our Annual Exhibition in September.

And you could join them.

Throughout the year we organise monthly events - outings, workshops, studio visits and more - and Associate Members are welcome to take part.

Make the most of the summer.

Find out more today:

bournemouthartsclub.co.uk

BOURNEMOUTH
ARTS
CLUB

Tom Marshall
Sun at Branksome Chine
(Detail, pen and ink, watercolour and pastel)

Save the date!

103rd Annual Exhibition

26 Sept - 8 Oct



SOMERSET ART WEEKS FESTIVAL

21 Sept - 6 Oct 2024

Landscape - Flux and Flow

A celebration of the county's artists across the region. Come and visit the artists on your doorstep in this series of free exhibitions where everyone is welcome

Visit somerstartworks.org.uk for more information, and to download the official app

Follow us on social media for highlights, artist stories, and news about the event

Instagram - @somerstartworks
Facebook - somerstartworkspage



Albert Goodman



LAWRENCE ARTHUR

IT IS AS IT IS

AT THE SLADE CENTRE

29th June to 3rd Aug



www.thesladecentre.com for opening times

GEORGE BILES

King of Signwriters

EXHIBITION

1st - 29th AUGUST 2024

A major retrospective art exhibition celebrating the remarkable talents of Bridport's Master Sign Painter, George Biles (1900-1987)



- THE BRITISH LEGION HALL •
- BRIDPORT ARTS CENTRE •
- BRIDPORT MUSEUM •

See venues for details



With thanks to Bridport Town Council and The National Lottery Heritage Fund



Percy Lizzard

PAINTINGS AND SHRINES



LIZZARD GALLERY

White House Farm, Shaftesbury Road, Shaftesbury, SP7 9NR
Friday 16 - Monday 19 August • 10 till 4

Sou'-Sou'-West
Symondsburry Estate
Bridport DT6 6HG

13 Jul-04 Aug
Summer 24



Bridport Art Society

15 Jun - 07 Jul
Emergence
Nigel Moores
& Gordon Ellis

01 - 14 Jul
**Narrative
Discourse**
Pamela Gregg

15 Jul - 04 Aug
Florals
Alison Rose

7 Aug - 01 Sep
Squares
Open

10 Aug - 01 Sept
Summer Show
Bridport Independent
Photographers

07 - 22 sept
Material Alchemy

* Call for entries,
see website for details



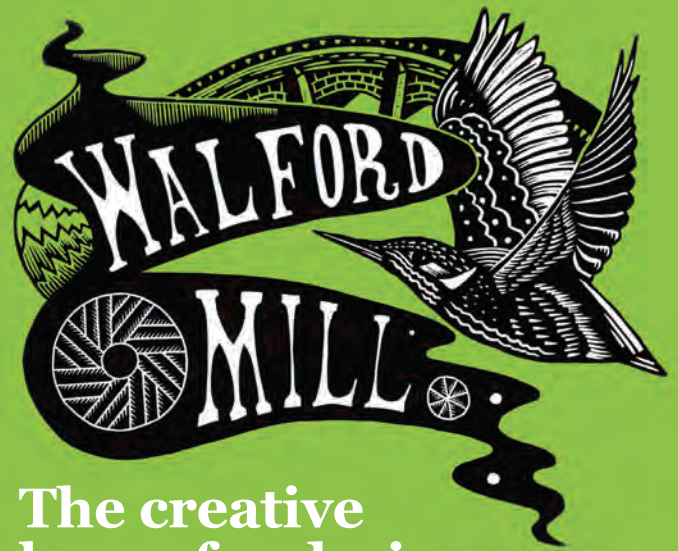
ARTS COUNCIL
ENGLAND



Gallery & Shop
Daily: 10:30 - 16:00

@ sousouwestgallery

sousouwest.co.uk



The creative home for designer makers in Dorset

At Walford Mill Crafts you'll find exciting exhibitions from established artists, as well as pop-up opportunities for up and coming makers. Book the kids on a children's art class or treat yourself to an inspirational craft workshop.

Visit our on-site makers in their open studios and enjoy a wonderful lunch at the Little Pickle cafe. Courtyard craft markets are held every second Saturday from March.

www.walfordmillcrafts.co.uk

Knobcrook Road, Wimborne BH21 1NL Registered Charity No. 1049540

Affordable studio spaces available - admin@walfordmillcrafts.co.uk

millhouse

Rose Mills Industrial Estate, Ilminster, TA19 9PS
'the new creative hub'

Current Exhibition : "With Clouds"
A collection of photographs and objects in
The Kimberley Gallery

Cafe Art Gallery
Workshops Music
Events
Retreats

exhibitions gigs great food
good company

call in and see!

see web for details:

millhousearts.co.uk

open daily 9.00am - 4.00pm, closed Sundays

Subscribe to
EVOLVER MAGAZINE
online at
evolver.org.uk

Six bi-monthly issues for £25



Visual Arts

SHARON AND AMELIA BIELBY: 'COLOUR AND LIGHT'

24 - 30 July

Shaftesbury Arts Centre, Bell Street, SHAFTESBURY, SP7 8AR. Monday - Saturday 10am - 4pm. 01747 855243. *Paintings and photography.*



GEMMA SCOTT

26 - 28 July

The Old Salt House, WEST BAY, DT6 4HB. Friday 12noon - 5pm, Saturday 10am - 5pm, Sunday 10am - 4pm. gemmascottstudio.com.

RICHARD CORBETT: 'TIME BY THE SEA'

26 July - 5 August

Eype Centre for the Arts, St Peter's Church, Mount Lane, EYPE, Bridport, DT6 6AR. 10.30am - 4.30pm. 07967 094080. *"Paintings inspired by the coastal landscape of West Dorset and South Goa."*

JAMES BUDDEN

31 July - 6 August

Shaftesbury Arts Centre, Bell Street, SHAFTESBURY, SP7 8AR. Monday - Saturday 10am - 4pm. 01747 855243. *Paintings.*

MIKE BESSER AND REGGIE COEHLO

31 July - 11 August

Walford Mill, Knobcrook Road, WIMBORNE, BH21 1NL. Wednesday - Saturday 10am - 5pm, Sunday 11am - 4pm. 01202 841400 / walfordmillcrafts.co.uk. *Ceramics.*

CAROLINE HARRIS: 'THE ART OF STITCH'

1 - 31 August

The Creative Gallery, St John's Hill, WAREHAM, BH20 4NB. Monday - Saturday 10am - 5pm. 01929 551505 / creativegallerywareham.co.uk.



ROYSTON KNIPE 'DEATH TO THE DALEKS'

Adventures in Time and Space: 60 Years of Doctor Who Art

"Celebrating the longest-running sci-fi television programme known to humanity, this exhibition is a nostalgia-filled voyage through six decades of Doctor Who art and the largest collection of original and digital Doctor Who art ever shown in one place. See artworks depicting all fifteen Doctors, companions and infamous villains including the Daleks and the Cybermen. Also on show will be comics and graphic novels, book covers, VHS video art, spreads from annuals, and a multitude of collectible Doctor Who merchandise that is nowadays rarely seen."

Until 5 October: The Museum of Somerset, Taunton Castle, Castle Green, TAUNTON, TA1 4AA. Tuesday - Saturday 10am - 5pm. £5 suggested donation. 01823 255088 / museumofsomerset.org.uk.



DORSET ARTS AND CRAFTS:

'SHOWCASE 2024'

2 - 6 August

Purbeck School, Worgret Road, WAREHAM, BH20 4PF. 10am - 4pm. £5. dorsetartsandcrafts.org. *"Sale of work by members of DACA, open art, craft and photography competitions, guest exhibitions, children's workshops, craft stalls, and demonstrations. It's a great day out!"*

Above: Geoff Storer

BULL MILL STUDIO 'FIRST SATURDAY'

3 August

Bull Mill, CROCKERTON, Warminster, BA12 8AY. 10am - 5pm. 07730 400784. nickandrew.co.uk / tanyahinton.co.uk. See 12 - 14 July.

SALISBURY GROUP OF ARTISTS

3 - 30 August

Gallery Four, Salisbury Central Library, Market Walk, SALISBURY, SP1 1BL. Monday - Saturday 10am - 4pm. salisburygroupofartists.co.uk. *"Annual summer exhibition featuring paintings, mixed media, ceramics, textiles, glass art and jewellery."*

'GUTTERMAN'S SECRET STREETS'

3 - 31 August

Fisherton Mill, 108 Fisherton Street, SALISBURY, SP2 7QY. Monday - Saturday 9.30am - 5pm. 01722 415121 / fishertonmill.co.uk. *"Oil and acrylic paintings featuring the travels of the Guttermans, a pair of unique characters created by artist Pamela Legg."*

MAXINE CHANDLER AND JOHN DIMECHE

7 - 13 August

Shaftesbury Arts Centre, Bell Street, SHAFTESBURY, SP7 8AR. Monday - Saturday 10am - 4pm. 01747 855243. *Stained glass and paintings.*

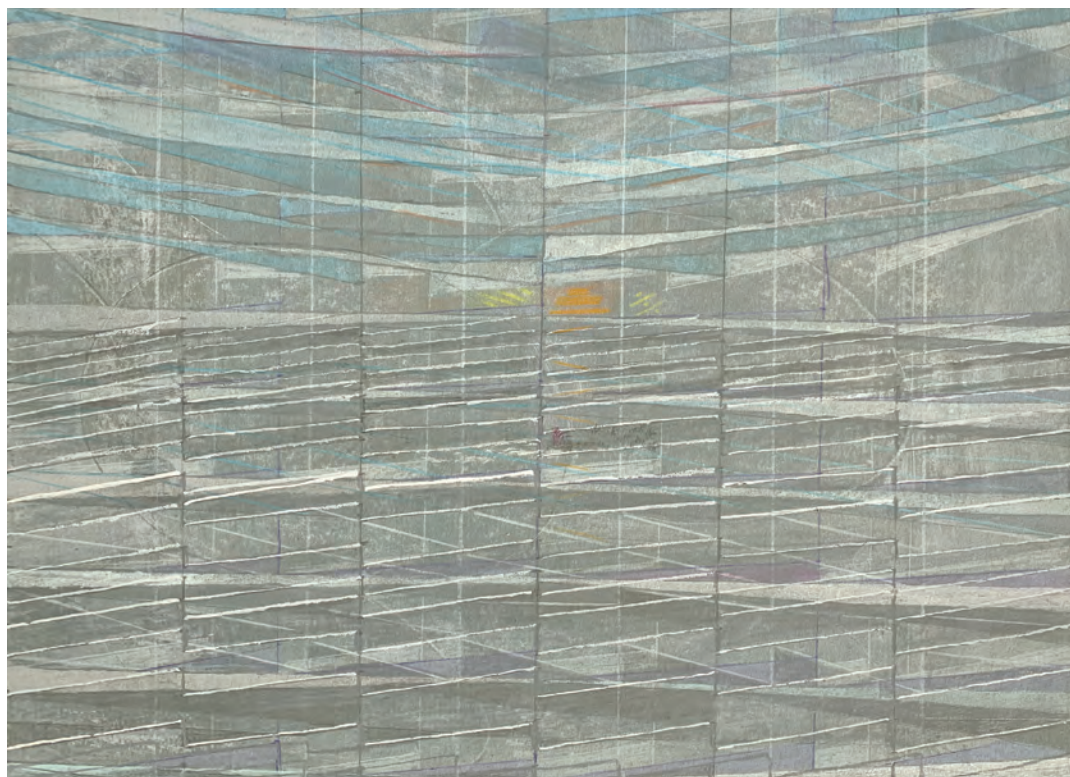
Kit Glaisyer 'The Cinematic Landscape'

Kit Glaisyer Fine Art, 11 Downes Street, Bridport, Dorset DT6 3JR

Open Saturdays 10am to 4pm & by Appointment 07983 465789

kitglaisyer.com

mail@kitglaisyer.com



'VÄINÄMÖINEN'S JOURNEY TO POHJOLA'

Lawrence Arthur: It is as it is

"A treasure trove of work from the reclusive and rarely exhibited English painter Lawrence Arthur. From large, stylised landscapes reminiscent of both Paul Nash and Paul Klee, to illustrations inspired by the whimsical style of English giants of illustration Mervyn Peake and John Tenniel, this is a collection redolent of the English tradition yet sparkling with curiosity and modern language."

Until 3 August: The Slade Centre, The Square, GILLINGHAM, SP8 4AY. Tuesday - Friday 9am - 4pm, Saturday 10am - 2pm. 07775 431652 / sladecentre.com.

PIA ELLIOT 7 - 31 August

Grange Gallery, 12 South Street, WAREHAM, BH20 4LT. Wednesday - Saturday 10am - 4pm. 01929 553942 / grangegallery.co.uk. "Exhibition of contemporary pen and ink work by Pia Elliot."

'SQUARES'

7 August - 1 September
Sou'-Sou'-West Arts Gallery, Symondsbury Estate, BRIDPORT, DT6 6HG. 10.30am - 4.30pm. 01308 301326 / sousouwest.co.uk.

'EARTHLY BEAUTY'

8 August - 14 September
Pound Arts Centre, The Pound, Pound Pill, CORSHAM, SN13 9HX. Monday - Saturday 9.30am - 9.30pm. 01249 701628 / poundarts.org.uk. "Summer open exhibition."

'ENGAGE WITH ART'

10 - 26 August
Hillview Art, LINWOOD, Ringwood, BH24 3QT. 10.30am - 4.30pm. 01425 472462 / angelaperrett.co.uk. "View a rich diversity of art forms in a tranquil forest setting."

DORSET INDEPENDENT PHOTOGRAPHERS

10 August - 1 September
Sou'-Sou'-West Arts Gallery, Symondsbury Estate, BRIDPORT, DT6 6HG. 10.30am - 4.30pm. 01308 301326 / sousouwest.co.uk.

STEPHEN YATES: 'JOURNEY'

14 - 20 August
Shaftesbury Arts Centre, Bell Street, SHAFTESBURY, SP7 8AR. Monday - Saturday 10am - 4pm. 01747 855243 / shaftesburyartscentre.org.uk. Paintings and ceramics.

CLEVEDON ART CLUB

17 - 26 August
The Science Atrium, Clevedon School, Valley Road, CLEVEDON, BS21 6AH. 10am - 4pm. 07593 986904 / clevedonartclub.co.uk.

ANGELA KNAPP AND KARA CHAMBERS: 'HANGING BY A THREAD'

17 August - 28 September
ACE Arts, Market Place, SOMERTON, TA11 7NB. Tuesday - Saturday 10am - 5pm. 01458 273008 / acearts.co.uk.

SUSAN COX

18 - 24 August
Sandy Hill Arts, Sandy Hill Lane, CORFE CASTLE, BH20 5JF. 10am - 4pm. 07767 767625 / sandyhillarts.co.uk. "Coastal seascapes."

'IMAGINATION UNLOCKED 5'

20 August - 1 September
Eype Centre for the Arts, St Peter's Church, Mount Lane, EYPE, near Bridport, DT6 6AR. 10am - 4.30pm. eypechurcharts.co.uk. "Recent paintings by artists David Brooke and Caroline Ireland. Colourful artworks that will spark ideas and invite you to weave your own stories."

'WHERE THE LIGHT IS'


21 - 27 August
Shaftesbury Arts Centre, Bell Street, SHAFTESBURY, SP7 8AR. Monday - Saturday 10am - 4pm. 01747 855243 / shaftesburyartscentre.org.uk. "Music, imaginative landscapes, story telling and gestural painting by Helen Baddeley, Jonathan Baddeley, and Joe Demur."

'WENDY AND FRIENDS'

28 August - 3 September
Shaftesbury Arts Centre, Bell Street, SHAFTESBURY, SP7 8AR. Monday - Saturday 10am - 4pm. 01747 855243 / shaftesburyartscentre.org.uk.

BULL MILL STUDIO 'FIRST SATURDAY'

7 September
Bull Mill, CROCKERTON, Warminster, BA12 8AY. 10am - 5pm. 07730 400784. nickandrew.co.uk / tanyahinton.co.uk. See 12 - 14 July.






ABOUT TOWN YOUR WAY

6 JUL - 31 AUG 2024
exhibition • workshops • events

Not your usual heritage
exhibition! Yeovil's town centre
past, present and future

yeovilartspace.uk/abouttown
@yeovilartspace

into the **UNKNOWN**

Exhibition of New Watercolours by
Moish Sokal



Into the Unknown

Watercolour 12" x 16"

The Malthouse Gallery

East Lambrook Manor Gardens, Silver Street, Somerset TA13 5HH



Saturday 1st June - Saturday 20th July

Tues to Sat • 10am to 5pm • moishsokal.co.uk • 07940 506757

JEREMY GARDINER

Turning the Tide

20th July - 13th October at The Sherborne
Newland, Sherborne, Dorset DT9 3JG
Monday - Saturday 10am - 5pm, Sunday 11am - 4pm

  thesherborne.uk
A DVA Production for The Sherborne

Boilerhouse Gallery

Waymarked

Explore the tracks and pathways of Purbeck
with the artists and makers
of the Boilerhouse Gallery
in a new exhibition at Durlston Castle

THE FINE FOUNDATION GALLERY, DURLSTON CASTLE, SWANAGE, BH19 2JL

Monday 26th August to Tuesday 10th September • Open daily, 10am - 5pm

boilerhousegallery.co.uk



The Boilerhouse Gallery at Corfe Castle is open throughout the year, Tuesday to Sunday, 10am - 5pm



Music

July and August 2024



BSO: Proms in the Park

"The Bournemouth Symphony Orchestra's *Proms in the Park* returns to Meyrick Park for another fantastic weekend of music, fun and fireworks with two spectacular open-air concerts! Friday's *Classical Extravaganza* will feature some of the best classical music ever written - including Rimsky-Korsakov's *Scheherazade*, popular movie soundtracks by Williams and Zimmer, and masterpieces by Johann Strauss, Bach and Grieg before ending in an explosive finale with Wagner's rousing *Ride of the Valkyries*. Saturday's *Disco Symphonic Spectacular* will be an exciting celebration of seventies disco hits, complete with disco band and star singers. It's sure to be a highlight of the summer so make sure you save the dates!"

'CLASSICAL EXTRAVAGANZA'

26 July: Meyrick Park, Central Drive, BOURNEMOUTH, BH2 6LH. 6pm (8pm start). £34. 01202 669925.

'DISCO SYMPHONIC SPECTACULAR'

27 July: Meyrick Park, Central Drive, BOURNEMOUTH, BH2 6LH. 6pm (8pm start). £34. 01202 669925.

bsolive.com

BELINDA EVANS

4 July

All Saints Church, MARTOCK, TA12 6JN. 7.30pm. £12 / £10. 07547 213992 / martockonline.co.uk/

belindaevans.co.uk. "Belinda Evans, a coloratura soprano, was born and raised in Ash, near Yeovil. She represented England singing the National Anthem throughout the

Rugby World Cup in Australia, performed at the BBC Sports Personality of the Year, and in the BBC series 'How Do You Solve A Problem Like Maria?'."

SEMLEY MUSIC FESTIVAL

5 and 6 July

Church Green, SEMLEY, Shaftesbury, SP7 9AS. 07719 655036 / semleymusicfestival.org. "Live music, food, drink and crafts, with lots of free activities for children."

GUILDHALL YOUNG ARTISTS

6 July

Willow Green, Richard Huish College, South Road, TAUNTON, TA1 3DZ. 2pm. Free entry. 07754 217993 / gyataunton.org.uk. "Music showcase."

OPA ROSA

6 July

Bramble Cottage, Dinghurst Road, CHURCHILL, BS25 5PJ. 12.30pm. 07442 672805. "Family lunchtime jazz event."

GREENSLEEVES RECORDS

REGGAE NIGHT

6 July

Bridport Arts Centre, 9 South Street, BRIDPORT, DT6 3NR. 8pm. £12 / £10. 01308 424204 / bridport-arts.com. "This is more than just a concert, it's a celebration of a genre that has transcended borders and united people from all walks of life through its messages of love, peace, and unity."

PREACHER STONE

9 July

Exeter Phoenix, Gandy Street, EXETER, EX4 3IS. 7.30pm. £16. 01392 668070 / exeterphoenix.org.uk. "High octane, 200 proof rock'n'roll band from North Carolina. One of the totally unmissable live acts, this is a rare opportunity to catch them in Wessex!"

PREACHER STONE

10 July

Tree House, The Vine Tree, 35 Berkley Road, FROME, BA11 2EH. 7.30pm. £16.50. 01373 455420 / cheeseandgrain.com. See 9 July.

THE ASHTON OCTET

11 July

The Corn Exchange, High East Street, DORCHESTER, DT1 1HF. 7pm. £15 / £13. dorchesterarts.org.uk.



AXE & TRAP STUDIOS IS A RECORDING FACILITY SITUATED AT THE FOOT OF THE MENDIP HILLS IN WELLS, SOMERSET.

Three performance spaces, 24 channel Trident console, extensive analogue outboard and much more.

Take a tour at
AXEANDTRAPSTUDIOS.COM



WAYWARD JANE

11 July

Lighthouse, 21 Kingland Road, POOLE, BH15 1UG. 8pm. 01202 280000. "A modern, transatlantic interpretation of American folk and Old Time traditions, blending roots music with fresh arrangement and original compositions."

PAUL HIGGS: 'CLASSIC TV JAZZ THEMES'

12 July

The Corn Exchange, High East Street, DORCHESTER, DT1 1HF. 7pm. £18 / £16. 01305 266926 / dorchesterarts.org.uk. "Jazz trumpet ace Paul Higgs presents an evening of classic TV themes, including Spider-Man, Star Trek, The Pink Panther and Doctor Who, written by some of the world's best jazz composers, including Neal Hefti, Henry Mancini, Johnny Dankworth, Alexander Courage, and Ron Grainer."

'SOMERSTOCK'

12 and 13 July

Recreation Ground, Gassons Lane, SOMERTON, TA11 6HW. £35. 07928 508700 / somerstock.com. "Family friendly music festival in the heart of Somerset. The 2024 line-up includes super-star jazz-funk band Shakatak, plus The Charlie Miller Band, Twisted Vinyl, Florence & The Bare Souls, and Harri Pick."

KAREN WIMHURST: 'JUMP'

13 July

Arnolfini, 16 Narrow Quay, BRISTOL, BS1 4QA. 2.30pm. £12 / £8 / £1. 0117 917 2300 / arnolfini.org.uk. "Field recordings of insects and amphibians combine with live and multi-tracked clarinets, featuring beautiful videos by multi-media artist Sonia Killman inspired by insect macrophotography."



Katey Brooks

"Growing up inside a cult, Katey Brooks found refuge in song. A rebellious artist that resists formula, this award-winning singer, songwriter and producer brings a seamless blend of Americana, folk and pop to listeners' ears. Brooks has made fans out of her influences and heroes, including Joss Stone, Nick Van Eede (Cutting Crew), and Chris Difford (Squeeze), with her song *All Of Me* making the finals in the International Songwriting Competition in 2023."

5 July: Pound Arts Centre, The Pound, Pound Pill, CORSHAM, SN13 9HX. 7.30pm. £14. 01249 701628 / poundarts.org.uk / kateybrooks.com.

JULIE DUNN JAZZ TRIO

14 July

Swanage Conservative Club, 27 Kings Road, SWANAGE, BH19 1HE. 4.30pm. 07946 528476 / swanagejazzfestival.co.uk.



'LE VOYAGE A PARIS, FRENCH CHANSONS'

14 July

Marine Theatre, Church Street, LYME REGIS, DT7 3QB. 8pm. £16 / £14. 01308 424901 / marinetheatre.com. "Magdalena Atkinson sings a varied programme of well loved songs from the greats, including Edith Piaf, Charles Trenet and Charles Aznavour."

JONAH HITCHENS & CLARA BOND

18 July

Marine Theatre, Church Street, LYME REGIS, DT7 3QB. 8pm. £16. 01297 442394 / jazzjurassica.co.uk. "A fabulous fusion of jazz, soul, rock and pop in this unique collaboration specially created for this one of a kind show!"

LUMAS WINDS

19 July

Bridport Arts Centre, 9 South Street, BRIDPORT, DT6 3NR. 11.30am. £14 / £5. 01308 424204 / bridport-arts.com. "Lumas Winds is a dynamic, young chamber ensemble based in London who are committed ambassadors for wind chamber music and the rich variety of repertoire that it offers."

LUMAS WINDS

19 July

Ilminster Arts Centre, The Meeting House, East Street, ILMINSTER, TA19 0AN. 7.30pm. £18. 01460 54973 / themeeetinghouse.org.uk. See 19 July.

SHERBORNE TIMES

A MONTHLY CELEBRATION OF PEOPLE, PLACE AND PURVEYOR

OUT NOW AND ONLINE

sherbornetimes.co.uk

Artist at Work No. 68 Jeremy Gardiner, Durdle Door



PICMF Purbeck International Chamber Music Festival

YOUTH AND EXPERIENCE

29 August-1 September 2024

Natalie Clein artistic director

Our 2024 Programme is online now
www.picmf.org



EVOLVER MAGAZINE

DEADLINE FOR NEXT ISSUE
September and October 2024
WEDNESDAY 7 AUGUST



evolvermagazine

 **EASTVILLEPROJECT.ORG.UK**

eps

INDEPENDENT RECORD STORE

VINYL / CDS / CASSETTES / BAND MERCHANDISE /
VINTAGE CLOTHES / BOOKS / BAND EQUIPMENT /
IN-STORE GIGS / DJ SESSIONS / REHEARSAL SPACE

UNIT 29, VICARAGE WALK, THE QUEDAM, YEOVIL

 **@epsyeovil** 

Music



Purbeck International Chamber Music Festival

"Purbeck International Chamber Music Festival is a unique and much-loved annual event in beautiful Dorset and the Isle of Purbeck. It features internationally renowned musicians and artists, including soloists, composers, visual artists, singers, and authors. This year's lineup includes Natalie Clein, Lotte Betts Dean (above), Henning Kraggerud, Alma Kraggerud, Priya Mitchell, Aoife Ní Bhriain, Nurit Stark, Brett Dean, Tatu Kauppinen, and Einav Yarden."

29 August - 1 September: Various venues in PURBECK, Dorset.
07891 760773 / picmf.org.

JULIE DUNN

19 July

Beaminster Pavilion, Memorial Playing Fields, BEAMINSTER, DT8 3DA. 7.30pm. £12.50. 01308 861185.
"Soul, rock, jazz and ballads."

TOLPUDDLE MARTYRS FESTIVAL

19 - 21 July

Tolpuddle Martyrs Museum, Dorchester Road, TOLPUDDLE, DT2 7EH. tolpuddlemartyrs.org.uk.
"Annual festival of music, arts, protest and more in celebration of the Trade Union movement. Acts include She Drew The Gun, Dakka Skanks, FFTP, and No Good Boyo."

JULIE DUNN AND JIM COOK

20 July

Yeovil Library, King George Street, YEOVIL, BA20 1PY. 2.30pm. 07946 528476 / juliedunn.co.uk.

LUMAS WINDS

20 July

The Dance House Gouldsbrook View, North Street, CREWKERNE, TA18 7AL. 7.30pm. £18.
concertsinthewest.org. See 19 July.

JULIE DUNN JAZZ TRIO

21 July

The Clubhouse, Beach Road, WEST BEXINGTON, DT2 9DF. 12.30pm.
theclubhousewestbexington.co.uk.

LUMAS WINDS

21 July

St Peter's Church High Street, SHAFESBURY, SP7 8LY. 3pm. 01747 854321. See 19 July.

SEPHORA GYPSY JAZZ QUARTET

26 July

CICCIC, Paul Street, TAUNTON, TA1 3PF. 7.30pm. £16 / £13. 01823 337477.
"The vibrant sound of 1930s Paris."



We are a funky, independent record shop stocking a great range of new and preloved vinyl, specialising in Reggae, Hip Hop, Soul, Funk, World, Electronic, Jazz, Blues, Alternative, Indie, Rock, Pop and more

8a Pope Street, Brewery Square, Dorchester, DT1 1GW
Tuesday to Saturday from 10am

VELOUR + JACK DIPPY + ROSIE KATE

27 July

Lighthouse, 21 Kingland Road, POOLE, BH15 1UG. 7.30pm. 01202 280000. "Grass roots music night."

DEAN CARTER

27 July

Bell Street Church, SHAFTESBURY, SP7 8AL. 2pm. £12. 01935 389655 / centreforpuresound.org.



RICHARD BOOTHBY

27 July

Wells and Mendip Museum, 8 Cathedral Green, WELLS, BA5 2UE. 1pm. £25 / £15. 01749 673477.

"Richard Boothby presents a dynamic programme showcasing the Viola da Gamba, an instrument highly popular between the 15th and 18th centuries."

SOMERSET CHAMBER CHOIR: 'SOUND THE TRUMPET!'

27 July

Wells Cathedral, WELLS, BA5 2UE. 6.30pm. £30 / £10. 0333 666 3366 / somersetchamberchoir.org.

"Featuring a distinguished line-up of musicians, the choir will perform jewels of the Renaissance and Baroque periods."

CELTIC SPACESHIP + ALENTA DA LÚA + QUEEN BAROQUE

27 July

United Reform Church, High Street, GLASTONBURY, BA6 9DZ. 8pm. £12. 07936 628922. "Folk, world, psychedelic and classical stylings."

'POP PARTY!'

31 July

Lighthouse, 21 Kingland Road, POOLE, BH15 1UG. 2pm. 01202 280000 / lighthousepoole.co.uk. "Exhilarating live concert, made especially for kids, brings the latest trending TikTok hits to life in vibrant and engaging live performance."



Bombay Bicycle Club

"Indie rock favourites Bombay Bicycle Club play the Concert Hall in support of their much-praised latest album *My Big Day*, which features a host of guest vocalists that perfectly encapsulates the breadth of the band's widespread appeal, including Damon Albarn, Jay Som, Nilüfer Yanya, Holly Humberstone and the legendary Chaka Khan."

11 July: Lighthouse, 21 Kingland Road, POOLE, BH15 1UG. 7.30pm. 01202 280000 / lighthousepoole.co.uk.



OUTCIDER FESTIVAL

1 - 4 August

Fernhill Farm, Cheddar Road, COMPTON MARTIN, BS40 6LD. outciderfestival.com. "Tenth anniversary of this fantastic small festival on a working farm. Acts include The Allergies (above), Sonic Boom 6, and Skimmity Hitchers."

THOKOZILE

3 August

Sandy Hill Arts, Sandy Hill Lane, CORFE CASTLE, BH20 5JF. 7.30pm. £16 / £10. 07767 767625. "Vibrant, African-inspired jazz music."

JULIE DUNN COLLECTIVE

3 August

Guggleton Farm Arts, Station Road, STALBRIDGE, DT10 2RQ. 7.30pm. £10. guggletonfarmarts.com.

THE SPOOKY MEN'S CHORALE

4 August

Hardye Theatre, DORCHESTER, DT2 1ET. 6.30pm. £25 / £23. 01305 266926 / dorchesterarts.org.uk. "Masters of their territory."

JULIE DUNN JAZZ TRIO

11 August

The Clubhouse, Beach Road, WEST BEXINGTON, DT2 9DF. 12.30pm. theclubhousewestbexington.co.uk.

KIM CYPHER

16 August

The Royal Lion Hotel, Broad Street, LYME REGIS, DT7 3QF. 7pm. £39 (includes 2-course supper). 01297 445622 / jazzjurassica.co.uk.

JULIE DUNN

18 August

The Helyar Arms, Moor Lane, EAST COKER, Yeovil, BA22 9JR. 7.30pm. 07946 528476 / thehelyararms.com. "Vintage rock, pop and blues."

CLOCKTOWER RECORDS

Unit 10a
St Michael's Estate
St Michael's Lane
Bridport
Dorset DT6 3RR
+
35a South Street
Bridport
Dorset DT6 3NY
Monday to Saturday
10am - 4.30pm
clocktowermusic.co.uk



Suppliers of both new and pre-loved vinyl, official t-shirts, merchandise and memorabilia

THE OLD SHAMBLES, SOUTH STREET, SHERBORNE, DT9 3LU

07730 356719 / thebeatandtrack@icloud.com

thebeatandtrack.co.uk

Performance

July and August 2024



Art

"With award-winning comedian Seann Walsh, Chris Harper (Call the Midwife, Coronation Street) and Aden Gillett (The Crown, The House of Elliot), Iqbal Khan (East is East, National Theatre and Othello, RSC) directs this brand-new production of Yasmina Reza's fiendishly clever and hilariously funny play on tour. The multi-award winning play (winner of Best Comedy at the Olivier Awards, Tony Awards and Moliere Awards), presented by Joshua Beaumont and Original Theatre, is a razor sharp exploration of art, love and friendship that will stay with you long after the curtain falls. A seemingly simple purchase of contemporary art - an all-white painting - ignites a hilarious debate amongst three close friends. What begins as a light-hearted discussion about art quickly descends into a riotous exploration of the blurred lines between art and reality."

29 - 31 August: Lighthouse, 21 Kingland Road, POOLE, BH15 1UG. 7.45pm. 01202 280000 / lighthousepoole.co.uk.

'PRIDE & PREJUDICE'

4 July

Maumbury Rings, DORCHESTER, DT1 1QN. 6.30pm. £16 / £14. 01305 266926 / dorchesterarts.org.uk. "Hotbuckle's rich characterisations abound in this latest adaptation of skilled writer Adrian Preater."

COLLECTIVE CONTACT: 'FOLEY'

4 July

Prince Albert Gardens, SWANAGE, BH19 2AR. 7pm. artsreach.co.uk. "Breathtaking tall, human towers and high throws accompanied by exquisite live music, mixed directly to create electronic beats."

GUILDHALL YOUNG ARTISTS

6 July

Pine Studio, Richard Huish College, South Road, TAUNTON, TA1 3DZ. 11.20am. Free entry. 07754 217993 / gyataunton.org.uk. "Drama showcase."



'HANDFUL OF NOTHING'

6 July

Lighthouse, 21 Kingland Road, POOLE, BH15 1UG. 8pm. 01202 280000. "A unique fusion of ingenious storytelling, innovative aerial choreography, puppetry, dance, text and song."

COLLECTIVE CONTACT: 'FOLEY'

12 July

East Quay, WATCHET, TA23 0AQ. 6pm. Free entry. 01984 263103 / eastquaywatchet.co.uk. See 4 July.

'RHYTHM IS GONNA GET YOU'

12 and 13 July

Lighthouse, 21 Kingland Road, POOLE, BH15 1UG. 7pm. 01202 280000 / lighthousepoole.co.uk.

'COASTAL COMEDY'

13 July

Lighthouse, 21 Kingland Road, POOLE, BH15 1UG. 8pm. 01202 280000 / lighthousepoole.co.uk.

'HARDY HAR!'

13 July

Various locations in DORCHESTER, Dorset. dorchesterarts.org.uk. "Dorchester's first comedy festival."

COLLECTIVE CONTACT: 'FOLEY'

13 July

Town Centre, SHEPTON MALLET, BA4 5AZ. 1pm. Free entry. takeart.org. See 4 July.

'ALL THE WORLD'S OUR PLAYGROUND'

13 and 14 July

Marketplace, SHEPTON MALLET, BA4 5AZ. 10.30am - 4pm. 07834 039030 / makethesunshine.co.uk. "An immersive festival of magical family theatre and walkabout wonderfulness programmed by young people of Somerset."

Shaftesbury Arts Centre



Theatre
Kipps
11 - 20 July
Various times



Gallery
Circles, Landscapes and Fusions
10 - 16 July



Film
Some Like it Hot
Tuesday 16 July
2pm



National Theatre
Live Recording
Present Laughter
Sunday 21 July, 7pm



Live Music
The Fourmost
Friday 30 August
7.30pm

11 - 13 Bell Street, Shaftesbury, Dorset SP7 8AR [f](https://www.facebook.com/shaftesburyartscentre) [i](https://www.instagram.com/shaftesburyartscentre) [t](https://www.tiktok.com/shaftesburyartscentre) 01747 854321 • shaftesburyartscentre.org.uk

Performance

'RHYTHM OF THE DANCE'

16 July

Lighthouse, 21 Kingland Road, POOLE, BH15 1UG. 7.45pm. 01202 280000 / lighthousepoole.co.uk. "World class musicians play live on stage with star vocalists and world champion dancers."

'HAMLET'

19 July

Athelhampton House & Gardens, ATHELHAMPTON, DT2 7LG. 6pm. £19 / £12. 01305 266926 / dorchesterarts.org.uk. "Join The Lord Chamberlain's Men for the greatest play in the English language. With a history stretching back to William Shakespeare's original company, they present this great play as he first saw it - in the open air, with an all male cast and Elizabethan costumes, music and dance."



'CABARET WITH BALLS'

20 July

Lighthouse, 21 Kingland Road, POOLE, BH15 1UG. 8pm. 01202 280000 / lighthousepoole.co.uk. "Charlie Bicknell and Louise Innes embark on a new show with their own inimitable mash of the irreverent and surreal."

TREEHOUSE THEATRE: 'THE SHAFTESBURY TALES'

20 July

Village Hall, CHILD OKEFORD, DT11 8EX. 4pm. £10 / £6. artsreach.co.uk. "In the style of Chaucer's Canterbury Tales, join us at The Pilgrims Inn as a merry company rests on their journey to St Edward's shrine in Shaftesbury, entertaining with tales of murder, miracles, music and mayhem."



The Guy in the Luggage Rack

"The Guy In The Luggage Rack is an aerial theatre show about grief, memory and relationship. Daisy wrestles (sometimes literally) with her grief - Ian, a 6 foot invisible bald guy with a lot of luggage - eventually discovering that by letting him into her world she is able to reconnect with the memory of her mother."

17 August: Millennium Green, BRIDPORT, DT6 3JL 1 and 3pm. £12 / £9. 01308 424204 / bridport-arts.com.

TREEHOUSE THEATRE: 'THE SHAFTESBURY TALES'

22 July

Springhead Gardens, FONTMELL MAGNA, SP7 0NU. 7pm. £10 / £6. 07855 117530. See 20 July.

'THE IMPORTANCE OF BEING EARNEST'

25 July

Maumbury Rings, DORCHESTER, DT1 1QN. 6pm. £16 / £14. 01305 266926. "Join Rain or Shine Theatre Company for an evening of hilarious confusion."

'THE SOUND OF MOVEMENT'

27 July

Sandy Hill Arts, Sandy Hill Lane, CORFE CASTLE, BH20 5JF. 7pm. £12 / £8. 07767 767625. "Contemporary jazz and dance performance."

'A SUMMER SUNDAY'

28 July

Whitcombe Manor, WHITCOMBE, DT2 8NY. 12noon. £35. 01305 266926. "Dorchester Arts' tenth summer fundraising event, featuring Charlie Bicknell and Louise Innes."

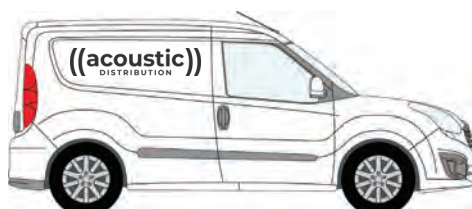
'PETER PAN'

1 August

Maumbury Rings, DORCHESTER, DT1 1QN. 5pm. £15 / £13. 01305 266926 / dorchesterarts.org.uk. "Dorset-based Sisata transport you to Neverland like you have never seen it before. Inspired by the Isle of Portland off the Jurassic Coast, meet the natives of Portland, pirates and smugglers and a prehistoric Jurassic monster intent on consuming the rest of the villainous Captain Hook."

((acoustic))
DISTRIBUTION

Delivering all your marketing materials



Call Will on 07397 853006
info@acousticdistribution.co.uk
acousticdistribution.co.uk

EVOLVER MAGAZINE FREE LISTINGS

Exhibition and performance listings should be emailed to listings@evolver.org.uk

Please send ALL information in the following order:

Event, date(s), venue, address (including postcode), times, admission fee (if any), contact number / website, up to 30 words about your event





Circus Raj

"Elite street circus performers combine their amazing skills in performing breathtaking acts of courage and bravery."

24 July: Millennium Green, BRIDPORT, DT6 3JL. 3pm. £16 / £15 / £12. 01308 424204 / bridport-arts.com.



MIRACLE THEATRE: 'LOVE RIOT'

1 August
Village Hall Field, IBBERTON, DT11 0EL. 7pm. £15 / £6. 07771 561099 / artsreach.co.uk. "Step into a world of etiquette, scandal and matchmaking, with this fresh new take on an 18th century rom-com from Cornwall's Miracle Theatre."

MIRACLE THEATRE: 'LOVE RIOT'

2 August
The Bay, KIMMERIDGE, BH20 5PF. 7pm. £15 / £6. 07879 473693 / artsreach.co.uk. See 1 August.

MIRACLE THEATRE: 'LOVE RIOT'

3 August
Village Hall Field, HALSTOCK, BA22 9SG. 7pm. £14 / £6. 01935 891744 / artsreach.co.uk. See 1 August.

'ADVENTURES IN STORYLAND'

8 August
Village Hall Field, LITTON CHENEY, DT2 9AU. 11am and 3pm. £7 / £5. 01308 482514. "Join storyteller Emily Hennessey and sitar player Sheema Mukherjee as they take us on a music-filled ride through colourful myths and folktales of India."

'HOLY COW!'

8 August
Village Hall, LITTON CHENEY, DT2 9AU. 7.30pm. £12. 01308 482514 / artsreach.co.uk. "Storyteller Emily Hennessey and sitar player Sheema Mukherjee conjure fast-flowing worlds of celestial celebrities, cosmic estate agents, daredevil demons and gods behaving (very) badly in these Indian stories of liberation, lies, love and life."

'STONES AND BONES'

8 August
Millennium Green, BRIDPORT, DT6 3JL. 2pm. 01308 424204 / bridport-arts.com. "Squashbox Theatre presents a marvellous mix of history and mystery!"

'DOCTOR DOLITTLE'

9 August
Maumbury Rings, DORCHESTER, DT1 1QN. 5pm. £16 / £14. 01305 266926 / dorchesterarts.org.uk. "One day, with the help of his wise old parrot Polynesia, Doctor Dolittle makes an extraordinary discovery - that he can talk to animals!"

'PETER PAN'

11 August
Millennium Green, BRIDPORT, DT6 3JL. 6.30pm. £17 / £14. 01308 424204 / bridport-arts.com. See 1 August.

THREE INCH FOOLS: 'THE COMEDY OF ERRORS'

16 August
Higher Orchard, SANDFORD ORCAS, DT9 4RP. 7pm. £16 / £8. 01963 220208 / artsreach.co.uk. "The Three Inch Fools are back with Shakespeare's shortest (and wildest) comedy. The clock is ticking, as the Fools rush to untangle one almighty mess in this farcical tale of long-lost twins, hysterical misunderstandings, and endless mishaps."

THREE INCH FOOLS: 'THE SECRET DIARY OF HENRY VIII'

23 August
East Quay, WATCHET, TA23 0AQ. 4pm. Free entry. 01984 263103 / eastquaywatchet.co.uk. "An essential guide on how to keep your head in the Tudor Court. A mad-capped take on Britain's most epic monarch, and those infamous wives."

'MOLLIE AND THE UNICORN'

24 August
Sandy Hill Arts, Sandy Hill Lane, CORFE CASTLE, BH20 5JF. 2pm. £10 / £6. 07767 767625 / sandyhillarts.co.uk. "Fantasy musical for children."

POETRY WEEKEND

31 August and 1 September
Sandy Hill Arts, Sandy Hill Lane, CORFE CASTLE, BH20 5JF. 07767 767625 / sandyhillarts.co.uk. "A fabulous weekend of poetry workshops, readings and performances by award-winning poets, featuring Luke Wright, Elvis McGonagall, Caroline Bird, and Esther Morgan."



PERFECT POSTERS



AMAZING GICLÉE PRINTS

SCANNING • PHOTOGRAPHY • CALENDARS • INVITATIONS • BOOKMARKS • BROCHURES • FLYERS • STICKERS
BANNERS • FOAMEX SIGNS • LETTERHEADS • BUSINESS CARDS • FOLDERS • DESKPADS • BESPOKE ITEMS



FLAYDEMOUSE MEDIA

01935 479 453

WWW.FLAYDEMOUSE.COM

8 BUCKLAND ROAD, YEOVIL, SOMERSET BA21 5EA



POSTCARDS AND GREETING CARDS

OPEN-AIR THEATRE AT THE MILLENNIUM GREEN THIS SUMMER!

24th JULY - CIRCUS RAJ

8th AUGUST - STONES & BONES

11th AUGUST - PETER PAN

17th AUGUST - THE GUY IN THE LUGGAGE RACK

4th SEPTEMBER - THE GONDOLIERS



BRIDPORT ARTSCENTRE

www.bridport-arts.com

Bridport Tourist Information

01308 424 204



BOURNEMOUTH SYMPHONY ORCHESTRA

PROMS

IN THE PARK 2024

The BSO
returns for
another outdoor
spectacular
weekend of music

CLASSICAL EXTRAVAGANZA

Meyrick Park Bournemouth
Friday 26 and Saturday 27 July 2024

01202 669925 bsolive.com

lighthouse

Arts & Entertainment | Poole

THU 29 – SAT 31 AUGUST

Art

The multi award-winning, smash hit comedy returns in a brand-new production with Iqbal Khan (East is East, National Theatre and Othello, RSC) directing an all-star cast.



Theatre

WED 11 SEPTEMBER

Pam Ayres

Pam has been making the nation laugh for almost 50 years and her performance will include a selection of poems and stories from across her long career.



Theatre

TUE 17 SEPTEMBER

Black is the Colour of My Voice

A welcome return for Apphia Campbell's acclaimed play inspired by the life of the incomparable Nina Simone.



Theatre

WED 18 SEPTEMBER

Elvis Costello & Steve Nieve

Costello and Nieve have collaborated for over 45 years. Here they'll play selections from a songbook that's 50 years long and twice as deep.



Concert Hall

FRI 20 SEPTEMBER

Dom Joly

In a rather unique theatre tour, Dom will be providing a hilarious, fascinating, and slightly anarchic guide to the wacky world of conspiracies.

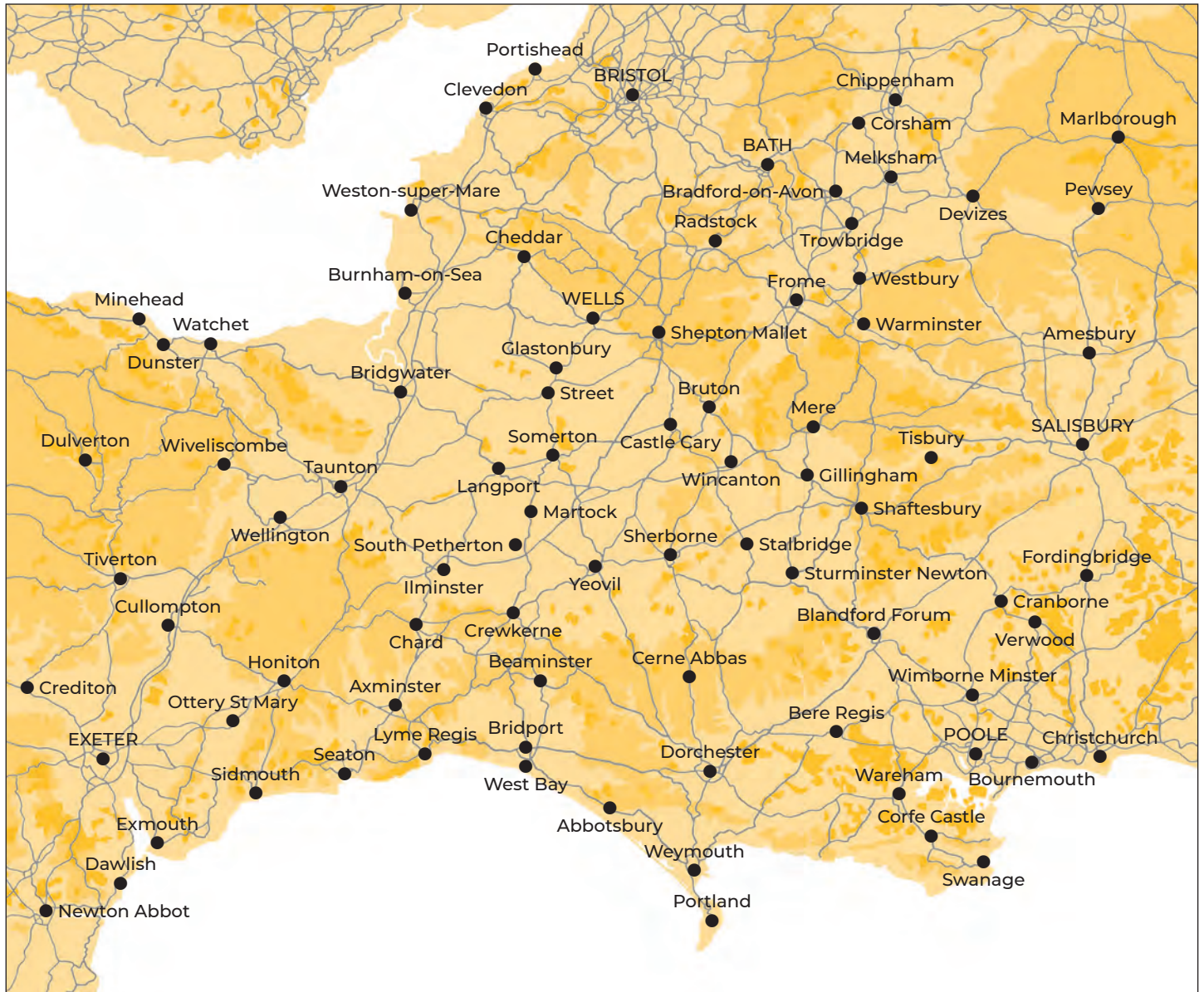


Theatre

| Different every day

EVOLVER MAGAZINE

WESSEX



Follow **EVOLVER** MAGAZINE on Instagram

evolvermagazine



EVOLVER MAGAZINE

THE WESSEX ARTS AND CULTURE GUIDE

Editor SIMON BARBER

Assisted by SUZY RUSHBROOK

News Editor SUZY RUSHBROOK
suzy@evolver.org.uk

Evolver Writers

FIONA ROBINSON / fionarobinson.com
PAUL MASKELL

Graphic Design SIMON BARBER

Front Cover

'TWO HEARTS' by ZOE BARKER

Photograph (Evolver Prize 2024 Winner)

DEADLINE FOR EVOLVER MAGAZINE 139

September and October 2024
WEDNESDAY 7 AUGUST

EVOLVER MAGAZINE



EVOLVER MEDIA

8 BUCKLAND ROAD, PEN MILL TRADING ESTATE,
YEOVIL, SOMERSET BA21 5EA

Email simon@evolver.org.uk

Telephone 01935 808441

Website evolver.org.uk

Hosted by AZTEC MEDIA

Instagram [evolvermagazine](https://www.instagram.com/evolvermagazine)

Published by EVOLVER MEDIA LIMITED

Pre-Press by FLAYDEMOUSE
01935 479453 / flaydemouse.com

Printed by BISHOPS PRINTERS
bishops.co.uk

Distributed by ACOUSTIC DISTRIBUTION
07397 853006 / acousticdistribution.co.uk

Outlets and Sponsors

EVOLVER MAGAZINE is available **FREE** at the following Wessex outlets:

ABBOTSBURY: Abbotsbury Studio, Dansel Gallery. AXMINSTER: Archway Bookshop, Heritage Centre, Unique Framecraft. BATH: Bath Artists' Studios, Beaux Arts, The Edge / ICIA, Holburne Museum of Art, Michael Tippett Centre, University of Bath, Victoria Art Gallery. BEAMINSTER: Art and Beyond, Little Toller Books, Yarn Barton Centre. BLANDFORD: Blandford Fashion Museum, Bryanston Arts Centre, Forum Café, Forum Framers. BOSCOMBE: Artcetera. BOURNEMOUTH: All Fired Up, Big Brother Music & Film, Pavilion Dance, Royal Bath Hotel, Russell-Cotes Museum & Art Gallery. BOWER HINTON: The Hollies Hotel. BRADFORD ON AVON: Wiltshire Music Centre. BRIDGWATER: Bridgwater Arts Centre, Engine Room. BRIDPORT: Art Unlimited, Bridport Arts Centre, Bridport Old Books, The Bull Hotel, Clocktower Records, Literary and Scientific Institute, Lyric Theatre, Millside Picture Framing. BRISTOL: Arnolfini, Bocabar, Bristol Beacon, Bristol Fine Art, Centrespace, Clifton Contemporary, Clifton Fine Art, Create Centre, Folk House, Jamaica Street Artists, Lime Tree Gallery, Museum & Art Gallery, New Cut Coffee, Old Vic, PRSC Gallery, RWA, Spike Island, St George's, Tobacco Factory, Trinity Centre, UWE, Watershed. BRUTON: At The Chapel, Bruton Museum. BUDLEIGH: SALTERTON: Brook Gallery. BURNHAM ON SEA: Princess Theatre & Arts Centre, Seabreeze Gallery. CASTLE CARY: Bailey Hill Bookshop, David Simon Gallery. CHARD: Art Café, Barleymow's, Hornsbury Mill Hotel. CHARMINSTER: Flux Art Supplies. CHEDDAR: Cheddar Art School. CHEDDON FITZPAINE: Hestercombe Gallery. CHIPPENHAM: Chippenham Museum. CHRISTCHURCH: Hatch Gallery, Hayloft Gallery, Red House Museum. CLEVEDON: Studio 3 Gallery. CORFE CASTLE: Boilerhouse Gallery, Morton House Hotel, Village Stores. CORSHAM: Pound Arts. CREWKERNE: Art4All / ArtyCrafty. CROCKERTON: Bull Mill Arts. CROWCOMBE: Halsway Manor. CULLOMPTON: Cullompton Community College. DEVIZES: Wiltshire Museum. DORCHESTER: Corn Exchange, Dorset Museum, Duke's, Frank Herring & Sons, Gallery on The Square, Shire Hall, The Little Keep, Vinyl Van. EAST LAMBROOK: East Lambrook Manor Gardens. EXETER: Academy of Music, Barnfield Theatre, The Cavern, Corn Exchange, Exeter School of Art, Glorious Art Cafe, Phoenix Arts Centre, Royal Albert Memorial Museum, Southgate Gallery. FROME: Bat Print Studio, Black Swan Arts, Cheese and Grain, Merlin Theatre, Raves From The Grave, Rook Lane Arts, Rise Centre, Whittox Gallery. GILLINGHAM: The Idea Works, Slade Centre.

GLASTONBURY: Abbey Muse Gallery, Facets Of Avalon, Glastonbury Galleries, Heart Of The Tribe Gallery, Red Brick Building, Rural Life Museum. HESTERCOMBE: Hestercombe Gallery. HONITON: The Beehive, Boston Tea Party, School Of Art And Wellbeing, Thelma Hulbert Gallery. ILMINSTER: Iminster Arts Centre, The Millhouse. KEYNSHAM: Chocolate Quarter. LANGPORT: 4 Every Cloud, Art Tea Zen, Great Bow Wharf, Shakspeare Glass. LYME REGIS: Coombe Street Gallery, Fine Art Framing, Lyme REGIS Museum, Marine Theatre, Studio 19. LYCHETT MINSTER: Barn Cafe, Courtyard Craft Centre. MARTOCK: Martock Gallery Yandles Cafe. MINEHEAD: Courtyard Framing, Leo Davey Gallery, Regal Theatre. MORCOMBELAKE: Artwave West. MUCHELNEY: John Leach Gallery. NEWTOWN: R C Arts. NORTH CURRY: Community Café. OTTERTON: Otterton Mill. PENN HILL: Josephine Wall Shop. PEWSEY: McNeill Gallery. POOLE: Arts University Bournemouth, Boiler Room Records, Guildhall Gallery, Lighthouse, Gallery Upstairs, Originals, Poole Museum, Poole Violins, Towngate Gallery And Framing. PORLOCK: Churchgate Gallery, Melody Art. PORTLAND: B-Side Outpost, White Stones. SALISBURY: City Hall, Fisherton Mill, Salisbury Arts Centre, Salisbury Museum, Salisbury Playhouse, Studio 53, Vanner Gallery, Wiltshire Gallery, Young Gallery. SEATON: Arts Café. SEAVINGTON: Village Shop. SHAFTESBURY: Down The Steps, The Cygnet, Grosvenor Hotel, Pictureframes, Shaftesbury Arts Centre. SHEPTON MALLET: One Craft Gallery. SHERBORNE: Caffé Nero, Old Barn Framing Gallery, The Beat & Track, The Sherborne, Winstone's. SIDMOUTH: East Devon Art Academy, Flo and Us, Kennaway House, Winstone's. SOMERTON: ACE Arts, Gifted Company & Gallery Coffee Shop. SOUTH PETHERTON: David Hall. STALBRIDGE: Dike & Sons, Guggleton Farm. STOBOROUGH: Furzebrook Studios. STOKE ST GREGORY: Willow & Wetlands Centre. STOURHEAD: First View Gallery. STREET: Millfield School Atkinson Gallery, Strode Theatre. STURMINSTER NEWTON: The Exchange, Poet's Corner, Wessex Photographic. SWANAGE: Durlston Castle, Hollinghead Studio Gallery, Mowlem Theatre, Mulberry Bush Gallery, Purbeck New Wave Gallery, Quarr Gallery. SYMONDSBURY: Sou'-Sou'-West. TAUNTON: Brewhouse Theatre, CIC CIC, Fine Art And Framing, Jane Amour, Museum of Somerset, Quantock Art And Framing, Queen's College, Tacchi-Morris Arts Centre, University Centre Somerset. TINCLETON: Sculpture by the Lakes, Tincleton Gallery. TISBURY: Messums Wiltshire. TIVERTON: Lantic Gallery. TROWBRIDGE: Arc Theatre, Court Street Gallery, The Lamb, Trowbridge Museum. WAREHAM: Creative Gallery, Purbeck Artisan Yard, Rex Cinema. WARMINSTER:

Athenaeum Centre. WATCHET: East Quay, WELLINGTON: Old Brick Workshop. WELLS: A2 Gallery, Andelli Art, Bishop's Eye, Good Earth, Heritage Courtyard Studios. WEST BAY: Sladers Yard. WEST COKER: Lanes, Old School Room. WESTHAY: Somerset Crafts. WESTON-SUPER-MARE: Frame Station, Playhouse, Weston College. WEYMOUTH: Cove Gallery, Happy Crab Gallery, Unbearable Design Ltd, Weymouth College, Weymouth Pavilion. WILLITON: J Gliddon & Sons. WIMBORNE: Allendale House, Otter Gallery, Square Records, Walford Mill Craft Centre. WIVELISCOMBE: Community Office. WORTH MATRAVERS: Burngate Stone Centre. YEOVIL: EPS, Westlands Entertainment Venue, Yeovil Art Space. YETMINSTER: Old School Gallery.

Plus selected TOURIST INFORMATION CENTRES and LIBRARIES throughout Wessex

EVOLVER SPONSORS

ACE Arts
Art And Beyond
Artcetera
Aztec Media
B-Side
Black Swan Arts
Boilerhouse Gallery
Bournemouth Arts Club
Bridport Arts Centre
Bull Mill Studio
The Creative Gallery
Dorset Visual Arts
East Quay
Gallery on the Square
Heart of the Tribe Gallery
Kit Glaisyer Fine Art
The Millhouse
Pound Arts
Shaftesbury Arts Centre
The Slade Centre
Sladers Yard
Somerset Art Works
Sou'-Sou'-West Gallery
Thelma Hulbert Gallery
Tincleton Gallery
Walford Mill
Yeovil Art Space

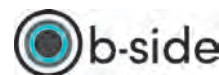
Our **EVOLVER SPONSORS** make Evolver Magazine possible. We couldn't do it without their ongoing support and advertising, so we make sure they get priority coverage in these pages.

If you'd like to join them, please email simon@evolver.org.uk to find out about our Sponsorship offer (for example our quarter page Evolver Sponsors pay £175 instead of £250 for each bi-monthly advert).

EVOLVER MAGAZINE is delivered to all our Wessex outlets by **ACOUSTIC DISTRIBUTION** (07397 853006)



ARTCETERA



Boilerhouse Gallery



BRIDPORT ARTSCENTRE



DORSET VISUAL ARTS

EAST QUAY

GALLERY ON THE SQUARE



millhouse



SLADERS YARD



Sou'-Sou'-West



Tincleton Gallery

WALFORD MILL



Dorset
Museum
& Art Gallery

Exhibition developed by



Natural
History
Museum
London



© Amit Eshel

Wildlife Photographer of the Year

19 July - 3 November 2024

Dorset Museum & Art Gallery | Dorchester

Open daily 10am - 5pm

dorsetmuseum.org