

EVOLVER MAGAZINE

THE FREE WESSEX ARTS AND CULTURE GUIDE



DEVON OPEN STUDIOS



7–22 SEPTEMBER
Featuring over 400 artists

Meet artists and makers in
their studios across Devon.

Free colour guide available,
email openstudios@devonartistnetwork.co.uk
or visit www.devonartistnetwork.co.uk



EVOLVER MAGAZINE 139

September and October 2024



Exhibit A

Debbie Lee: Is there room at the table?

Oil on canvas, 120 x 100 cm

Storytelling is as fundamental a part of our cultural history as it is of our imagination. Debbie Lee weaves this tradition into her work with wit, warmth and a dash of cautionary shade. From Chaucer to Dante, Marina Warner to Violet Kupersmith, literature and good storytelling have been vitally inspirational in the genesis of Debbie's ideas. The work is sketched out and embellished with incidents noticed in her daily life and further realised with the inclusion of intimate episodes from her family life. Her paintings become visual cautionary tales tackling universal morality and illustrated with the examples that lie at her fingertips. Fearlessness and faith are incumbent qualities when illustrating the subject of feast and famine, using memories of family dinners whilst mixing it up with *Babette's Feast*. Debbie's retelling of the epic *David and Goliath* story include Corfe Castle, the Shaftesbury Mummers, a deer that visits her studio as well as the school bus where her children wave a daily goodbye. The work is beautifully painted and filled with seduction and mystery offering a nurturing welcome into Debbie's world.

Glen Innes

DEBBIE LEE: 'STORYBOUND'

28 September - 2 November: The Slade Centre, The Square, GILLINGHAM, SP8 4AY.

Tuesday - Friday 9.30am - 4pm, Saturday 9.30am - 2pm. 07775 431652 / thesladecentre.com.

Headlines

September and October 2024



FAYE SUZANNAH



JOHN MINSHULL

Glastonbury Mural Trail

This September the Glastonbury Mural Trail celebrates five years. It is a volunteer-led project that demonstrates the positive impact art can have on a community, and is co-ordinated by local artist Kim von Coels, with support from the Town Council and the Chamber of Commerce, who both recognise its contribution in enhancing the quality of life of local people and boosting the tourist economy.

The trail features a series of vibrant murals created by various local, national, and international artists, showcasing a varied range of styles and subject matter. These artworks reflect and celebrate the town's unique culture. The trail includes designs reflecting the area's landscapes, history, mythology, symbolism, spiritual heritage, as well as playful patterns and street art culture.

Prior to the trail's official launch, Glastonbury already had many public artworks, both official and unofficial. Notable contributions included a Banksy piece on Chilkwell Street in 2007, which was sadly painted over by the property owner. These early works laid the foundation for the Glastonbury Mural Trail and became popular elements of the town's international appeal.

The mural trail now features around 70 artworks by over 40 different artists. As more walls become available and more people embrace the idea of contributing to this rich tapestry of work, the trail continues to grow. New murals are regularly added, and existing ones are maintained and renewed, ensuring the trail remains inspiring, fresh, and reflective of Glastonbury's dynamic community.

The Mural Trail has become an integral part of the town's identity, gaining recognition as a significant cultural attraction, drawing thousands of visitors each year. It champions the transformative power of creativity and has been praised for its role in enhancing the town's visual landscape.

To celebrate five years of the Trail, there is an exhibition at Heart of The Tribe Gallery from 12th September to 20th October, showcasing original works by participating artists, and offering photos and prints of a huge selection of murals, past and present - plus fundraising events for a new map and a free talk by renowned muralist Jon Minshull.

Suzy Rushbrook

glastonburymuraltrail.co.uk



MILLIE GLEESON



HAZARD ONE

Headlines



What are you looking at?

Visual artist Angela Charles shares her story of unexpectedly losing her sight, and her experience of ‘coming out’ as a blind artist after years of hiding it as the self-proclaimed Queen of Bluff.

Multiple voices weave narration and description: Angela’s iPhone (Daniel), a philosophising Audio Describer (Christopher Flowers) and Angela’s mentor, the artist Bedwyr Williams.

Over the course of the film they interact and respond to Angela as she explores notions of seeing, as she navigates a new creative path, and questions our preconceptions in asking us, *What are you looking at?*

‘WHAT ARE YOU LOOKING AT?’

13 September

Arnolfini, 16 Narrow Quay, BRISTOL, BS1 4QA. 7pm. Free ticketed event: arnolfini.org.uk. *Screening and Q&A with artists Angela Charles and filmmaker Liberty Smith.*

‘WHAT ARE YOU LOOKING AT?’

14 and 15 September

Arnolfini, 16 Narrow Quay, BRISTOL, BS1 4QA. Tuesday - Sunday 11am - 6pm. 0117 917 2300 / arnolfini.org.uk. *Screenings on loop across the weekend.*



Simon Chesterfield

Co-founder and ever-present member of The Chesterfields, Simon Chesterfield’s first solo album features the results of a year long project re-imagining six of his songs as an orchestral performance.

Co-produced by Ben Scott Turner, Rob Ellis (PJ Harvey) and Simon Chesterfield, the album was orchestrated by Charles Harrison.

An ensemble of Wessex musicians were gathered together for the project, several of whom have now signed up for some Simon Chesterfield live adventures, including a launch party for the album at the wonderful Lyric Theatre in Bridport.

Simon Chesterfield will be available on all the usual digital platforms (Spotify, Apple Music, Amazon, Deezer, Tidal etc), and a limited edition of 300 ten inch vinyl albums will be available via Legere Recordings and Bandcamp.

11 October: The Lyric Theatre, Barrack Street, BRIDPORT, DT6 3LX. 7.30pm. £10. bridportandwestbay.co.uk.



I-NICHI

b-side Festival 2024

Now in its tenth year, this year’s b-side Festival will be a joyous celebration of innovation, showing how local and international communities connect through creativity. Artists and performers will inspire and share artworks that celebrate the theme, *Who Do We Think We Are?* - an exploration of migration stories and identity.


A highlight of the weekend is always *The Portland Parade*. This year’s event, on Sunday 8th September, has been co-produced with Portland artist Sophie Fretwell, and will have a Japanese twist.

Sophie’s project *Islands of Imagination: Portland & Japan* explores the folklore and traditions of island communities (including bunnies!). In Japanese folklore, Yokai are mysterious shape-shifting spirits, monsters and sprites. But what would a Portland Yokai look like?

Visitors can expect the unexpected, and are invited to dress up in their weirdest to join the parade. It all starts at 6pm in the Easton Gardens, with family friendly activities and performances by Takashi Matsumoto and i-nichi.

5 - 8 September: Various locations across the ISLE OF PORTLAND, Dorset.

b-side.org.uk



Thelma Hulbert Gallery

Philippa Lawrence
A Space Between

Anne Jackson
The Witchcraft Series

14 September – 2 November 2024





Image - © Anne Jackson. The Witchcraft of Elizabeth Styles



Image - © Philippa Lawrence, Bound Glamorganshire

Elmfield House, Dowell Street, Honiton, Devon EX14 1LX | 01404 45006 | thelmahulbert.com
Open: Tues – Sat 10am - 5pm | Free admission, donations welcome



thelmahulbertgallery

Visual Arts

September and October 2024



SARAH HUMBY 'DUSK'

Bournemouth Arts Club

"Bournemouth Art Club's 103rd annual exhibition features new work by members, including paintings, drawings, prints and sculpture, selected by multi-award-winning Hampshire artist Julie Collins. For over a century the Club has set the standard in contemporary arts for Bournemouth and the surrounding area. True to their commitment to moving with the times, they are in the middle of a recruitment drive for the best new artists in the region. Full membership is by selection only, but anyone with an interest in contemporary art is welcome as an associate member."

26 September - 7 October: Gallery Upstairs, Upton Country Park, POOLE, BH17 7BJ. 10am - 4pm. bournemouthartsclub.co.uk.

SOMERSET PRINTMAKERS

Until 1 September

Somerset Rural Life Museum, Chilkwell Street, GLASTONBURY, BA6 8DB. Tuesday - Sunday 10am - 5pm. £9.35 / £7.65 / £4.40. 01458 831197 / srlm.org.uk.

'COAST!'

Until 1 September

Gallery On The Square, Queen Mother Square, DORCHESTER, DT1 3BL. Monday - Saturday 9.30am - 5pm, Sunday 11am - 4pm. 01305 213322.

DORSET INDEPENDENT PHOTOGRAPHERS

Until 1 September

Sou'-Sou'-West Arts Gallery, Symondsburys Estate, BRIDPORT, DT6 6HG. 10.30am - 4.30pm. 01308 301326 / sousouwest.co.uk.

'IMAGINATION UNLOCKED 5'

Until 1 September

Eype Centre for the Arts, St Peter's Church, Mount Lane, EYPE, near Bridport, DT6 6AR. 10am - 4.30pm. eypechurcharts.co.uk.

"Recent paintings by artists David Brooke and Caroline Ireland. Colourful artworks that will spark ideas and invite you to weave your own stories."

EAST QUAY OPEN 2024: 'OPEN ABOUT IDENTITY'

Until 2 September

Gallery 1, East Quay, Harbour Road, WATCHET, TA23 0AQ. Monday - Sunday 10am - 5pm. 01984 263103 / eastquaywatchet.co.uk.

'THE ZIZI SHOW'

Until 2 September

Gallery 2, East Quay, Harbour Road, WATCHET, TA23 0AQ. Monday - Sunday 10am - 5pm. 01984 263103 / eastquaywatchet.co.uk.

'WENDY AND FRIENDS'

Until 3 September

Shaftesbury Arts Centre, Bell Street, SHAFTESBURY, SP7 8AR. Monday - Saturday 10am - 4pm. 01747 855243 / shaftesburyartscentre.org.uk.

B-SIDE FRINGE

Until 8 September

Various locations, PORTLAND, Dorset. b-side.org.uk. *"The b-side fringe is back. Open studios, windows, front gardens and more. Discover some hidden and not-so-hidden creative gems on your travels around Portland."*

'SQUARES'

Until 8 September

Sou'-Sou'-West Arts Gallery, Symondsburys Estate, BRIDPORT, DT6 6HG. 10.30am - 4.30pm. 01308 301326 / sousouwest.co.uk.

'WAYMARKED'

Until 10 September

Fine Foundation Gallery, Durlston Castle, SWANAGE, BH19 2JL. 10am - 5pm. boilerhousegallery.co.uk. *"Explore the tracks and pathways of Purbeck with the Boilerhouse Gallery's artists and makers."*



Judith Moule / RIFT



BESPOKE FRAMING

Wide range of frames to choose from
Expert help and friendly advice

ART GALLERY

Original fine art prints
Championing local and national artists

5 LYNDEN WAY • BEAMINSTER

DORSET DT8 3AX

Tel: 01308 800693

Email: info@artandbeyond.co.uk
artandbeyond.co.uk



'MAPPING THE UNDERCLIFFS NATURE RESERVE'

Until 13 September

Rotunda Gallery, Lyme Regis Museum, Bridge Street, LYME REGIS, DT7 3QA. Tuesday - Saturday 10am - 5pm, Sunday 10am - 4pm. 01297 443370 /

lymeregismuseum.co.uk. "A unique exhibition of detailed hand-drawn maps of the amazing wildlife and landmarks in and around the Dorset coast's Undercliffs National Nature Reserve, drawn by local nature journaling artist Alex Boon."

'EARTHLY BEAUTY'

Until 14 September

Pound Arts Centre, The Pound, Pound Pill, CORSHAM, SN13 9HX. Monday - Saturday 9.30am - 9.30pm. 01249 701628 / poundarts.org.uk. "Summer open exhibition."



'PARALLEL LINES'

Until 14 September

The Hatch Gallery, 7a Church Street, CHRISTCHURCH, BH23 1BW. Monday - Saturday 11am - 4pm. 07739 344641 / benwinterart.com. "A collaborative exhibition featuring the latest work by Inga Street (above) and Ben Winter, both inspired by space, light, colour and the landscape."

'CONNECTIONS'

Until 21 September

Ilminster Arts Centre, The Meeting House, East Street, ILMINSTER, TA19 0AN. Tuesday - Saturday 9.30am - 3pm. 01460 54973 / themeeetinghouse.org.uk. "Four friends show new work exploring their connections to various landscapes, from the wilds of Shetland to the calm of The Levels."



LAURA BOSWELL 'SUN THROUGH THE HILLS'

Summer Print Show

"Affordable works of art that celebrate and explore the people, the natural world, the sea and the things that make life worth living made by some of the most brilliant printmakers working today, including Laura Boswell, Martyn Brewster, Merlyn Chesterman, Anita Klein, Nick Jones, and Sally McLaren. Roger Hardy's resonant wooden sculpture and Petter Southall's eloquent furniture will also be on show throughout the summer."

Until 15 September: Sladers Yard, WEST BAY, Bridport, DT6 4EL. Wednesday - Saturday 10am - 4.30pm. 01308 459511 / sladersyard.co.uk.

'SUMMER CORNUCOPIA'

Until 21 September

The Slade Centre, The Square, GILLINGHAM, SP8 4AY. Tuesday - Friday 9.30am - 2pm, Saturday 9.30am - 2pm. 07775 431652 / thesladecentre.com. "A gleeful nod to the wonder of Summer and the joy that it brings."

ALBERT DE BELLEROCHE: 'A PAINTER IN PARIS'

Until 22 September

Russell-Cotes Art Gallery and Museum, East Cliff, BOURNEMOUTH, BH1 3AA. Tuesday - Sunday 10am - 5pm. £8.50 / £4.50. russellcotes.com. "Works by the acclaimed artist, featuring over 60 paintings and lithographs."

ANGELA KNAPP AND KARA CHAMBERS: 'HANGING BY A THREAD'

Until 28 September

ACE Arts, Market Place, SOMERTON, TA11 7NB. Tuesday 11am - 5pm, Wednesday - Saturday 10am - 5pm. 01458 273008 / acearts.co.uk. "Angela's work focuses on birds, once common in her lifetime which are now facing drastic declines and an uncertain future. Kara's work is handstitched, identifying the simple act of stitching as a medium which slows down the hectic world."

'MIDSUMMER'

Until 28 September

Studio 3 Gallery, Clevedon Craft Centre, Moor Lane, CLEVEDON, BS21 6TD. 10am - 4pm. studiothree.art. "Fabulous new artistic talent."

'TOULOUSE-LAUTREC AND THE MASTERS OF MONTMARTRE'

Until 29 September

Victoria Art Gallery, Bridge Street, BATH, BA2 4AT. Tuesday - Sunday 10.30am - 5pm. £10 / £9 / £3.50. 01225 477233.

REX WHISTLER: 'THE ARTIST AND HIS PATRONS'

Until 29 September

The Salisbury Museum, The Kings House, 65 The Close, SALISBURY, SP1 2EN. 10am - 5pm. salisburymuseum.org.uk.



**Frances HATCH
Caroline McADAM CLARK
Robin RICHMOND
Linda SAUL**

10 - 20 October 2024
RWS Gallery
3 - 5 Whitcomb Street
London WC2H 7HA
Open daily 11am - 5pm



Frances Hatch 'Bracken Milk Moon'

Tincleton Gallery

contemporary fine art in Dorset

Edge of Land

gallery & guest artists

Fri 7 Sep 2024 - Sun 5 Jan 2025



"Along The Sea Wall" oil on board, by Philippa Headley

The Old School House, Tincleton, near Dorchester, DT2 8QR
Friday / Saturday / Sunday / Monday • 10am – 4pm
01305 848909 • tinctongallery.com



Rhythm of the Tone Open Studios & Exhibition

RICHARD HOLT
JENNY KEOGH
LIZ HUTCHIN
ADAM GROSE
CAITLIN PENGELLY
GEORGINA PETERS
KEITH CROCKER
DEBBI SUTTON
SHEILA BRAINE
DOMINIC JOHNSON



info@artshub.uk | artshub.uk

PV 27 SEPT 7-9pm

27 - 29 SEPT 10am - 9pm

FLOOK HOUSE, BELVEDERE RD
TAUNTON TA1 1BT

GLASTONBURY MURAL TRAIL

5
YEAR

ANNIVERSARY EXHIBITION

12TH SEPTEMBER – 20TH OCTOBER

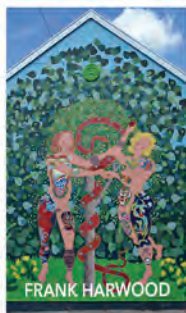
Please join us for celebratory drinks on Saturday 14th September from 2-4pm
& our 5 yr anniversary fundraising party on Thursday September 19th from 6-9pm



JON MINSHULL



SIKOH



FRANK HARWOOD



FAYE SUZANNAH

Celebrating 5 years of Glastonbury's infamous mural trail which now features over 70 artworks by more than 40 different local, national and international artists. The exhibition will showcase original work by many of the mural trail participants as well as photos and prints of a huge variety of murals, past & present.



HEART OF
THE TRIBE
ART GALLERY

EXHIBIT WITH US; WINTER OPEN EXHIBITION 2024

25TH OCTOBER - 22ND DECEMBER

Submissions open online until 18th September

Head over to our blog for more information

and to see our full terms and conditions.

<https://heartofthetribe.com/blog/>

PLEASE SCAN QR CODE FOR
MORE INFORMATION ABOUT
UPCOMING EVENTS



01458 780046

Gallery@HeartofTheTribe.com

www.HeartofTheTribe.com

[f @HeartofTheTribeGallery](https://www.instagram.com/HeartofTheTribeGallery)

74 High Street, Glastonbury, BA6 9DZ

EXHIBITIONS | EVENTS | GIFTS & PRINTS | WORKSHOPS | HOT DRINKS | AWARD WINNING GARDEN

NENGI OMUKU: 'THE DANCE OF PEOPLE AND THE NATURAL WORLD'

Until 29 September

Arnolfini, 16 Narrow Quay, BRISTOL, BS1 4QA. Tuesday - Sunday 11am - 6pm. 0117 917 2300 / arnolfini.org.uk.

"Nigerian artist Nengi Omuku's lush landscapes immerse human figures within nature, highlighting the relationship between both individual and collective thought and ideas of belonging."

ADÉBAYO BOLAJI: 'IN PRAISE OF BEAUTY'

Until 29 September

Arnolfini, 16 Narrow Quay, BRISTOL, BS1 4QA. Tuesday - Sunday 11am - 6pm. 0117 917 2300 / arnolfini.org.uk.

'A HOME FOR ART'

Until 29 September

RWA, Queen's Road, BRISTOL, BS8 1PX. Tuesday - Sunday 10am - 5pm. 0117 973 5129 / rwaopen.co.uk. "In celebration of the RWA's 180th birthday, we reveal some of the secrets of the building and tell the little-known stories of refugee artists who exhibited at the RWA."



'ADVENTURES IN TIME AND SPACE: 60 YEARS OF DOCTOR WHO ART'

Until 5 October

The Museum of Somerset, Taunton Castle, Castle Green, TAUNTON, TA1 4AA. Tuesday - Saturday 10am - 5pm. £5 suggested donation. museumofsomerset.org.uk. "A nostalgia-filled voyage through six decades of Doctor Who art."

Above: Lee Sullivan 'Mancopolis'



MARY GILLETT 'DISPLACEMENT' (48 x 63 cm)

Edge of Land

"The Tincleton Gallery's Autumn exhibition has the strong theme of the shoreline running through several of the featured works. Philippa Headley's oils unveil a myriad of surprises, this series showing a fascination for the way in which the land and sea interact with light and atmosphere. Those sentiments deeply inform Kim Pragnell's stormwracked Cornish rocks, or Mary Gillett's pieces from her own county of Devon or from farflung Canadian lakes. Bristol-based Ruth Ander contributes her limpid nature-drenched monoprints. Many other gallery and guest artists will also be exhibiting their various sculptures, ceramics, and oils, including Johannes von Stumm, Alison Wear, Almuth Tebbenhoff, and Colin Moore."

7 September - 5 January: Tincleton Gallery, The Old School House, TINCLETON, near Dorchester, DT2 8QR. Saturday and Sunday 10am - 4pm. 01305 848909 / tinctongallery.com

LUCY LARGE

Until 6 October

Studio 10, East Quay, Harbour Road, WATCHET, TA23 0AQ. Monday, Thursday, Friday and Saturday 10am - 5pm. eastquaywatchet.co.uk. "Lucy will explore the relationship between inner landscapes and relational spaces."

KIT GLAISYER: 'THE MARSHWOOD VALE AND BEYOND'

Until 26 October

Bridport Contemporary, 11 Downes Street, BRIDPORT, DT6 3JR. Saturday 10am - 4pm. 07983 465789. "Evocative landscape paintings, enticing Drip Figures, plus Kit's iconic Cafe Royal series."

PENNIE ELFICK: 'CONVERSATIONS WITH MYSELF'

2 September - 4 October

Burdall's Yard, 7a Anglo Terrace, BATH, BA1 5NH. Tuesday - Friday 11am - 4pm, Saturday 9.30 - 11.30am. burdallsyard.co.uk. "These images contain a synthesis of a moment seen and remembered."

THE DORSET LANDSCAPE: THIS SEASON AT

GALLERY ON THE SQUARE



Roger Seddon



John Boyd



Sue Fawthrop



Colin Willey



Charlie Money

Queen Mother Square, Poundbury, Dorchester DT1 3BL

Open Mon-Sat, 9.30am to 5pm

01305 213322

www.gallerypoundbury.co.uk



'DISAPPEARING SPECIES 3'



Detail of 'STAG BEETLE'

Frances Gynn

Most artists make work that will be seen and potentially treasured for years. For many their artwork is so important to them that they find it hard to part with it when a buyer comes along. Fran Gynn makes exquisite drawings of endangered animals, birds and insects, and then lets members of the public rub them out in what is essentially an invited act of vandalism. Her deep concern about the environment leads her to promote the destruction of images that represent it.

I first came across Fran's work when I saw her *Ghost Nets*. I was entranced by these drawings of ethereal shapes floating gracefully on the sea. Deceptively beautiful they are actually images of lost or abandoned fishing gear. They are not benign, they are deadly and a major source of plastic pollution. The artworks draw attention to the damage caused by dumped fishermen's nets to the ecosystem of the oceans. And these nets are everywhere.

Fran Gynn started out as a designer and ran a design agency for many years. However her first love had always been drawing, with painting a close second. She returned to her studies in her thirties, taking a Fine Art Degree in Exeter part-time whilst continuing to run her design agency. Her concern for the environment has been a constant throughout her life. In the last few years she has become proactive in flagging up these concerns by making drawings to be erased. The act of using a rubber to obliterate a beautiful

drawing parallels the destruction of the creatures it represents and it really resonates with the public. It replicates the destruction of something beautiful and unique in a way that concentrates people's minds on what human behaviour is doing to the planet.

"I continue with the erasures because they have so much impact and create such strong debate, reaching people who haven't engaged with art at all and reaching such a diverse group of people." Two of her erasure drawings will be at the RWA in this year's Annual Open Exhibition, and there will be events during which they will be rubbed out.



Gynn has done erasure events in London, Newton Abbott, Exeter and Bath, where children have crawled over a drawing placed on the floor, rubbing it out as they go. She has done them on a beach, in a garden, a market, and in galleries.

Her subjects include Bees, Beachcomber Beetles, Blue Ground Beetles, Stag Beetles, and the Scarce Blackneck Moth, to name a few. In November 2023 at Kingsbridge in Devon her Hare erasure, which referenced Durer's drawing of a hare, was opened by Jonathan Dimbleby, and the event was covered by BBC Spotlight. Other endangered animals which have attracted her attention and become subjects for an erasure drawing are the Water Vole, the Grey Long Eared Bat, Spiny Seahorse and Mountain Gorilla.

She says that the last thing she thought she would be painting is dormice and penguins. However she recently did a painting of Hazel Dormice which people erased using paintsticks. "I use my drawing toolbox to best represent a concept for a piece." Many of her creatures are the stuff of children's picture books and arouse powerful emotions because of their cuteness quotient! Consequently they are the perfect choice of subject for Fran to make drawings, which take more than a hundred and fifty hours to complete and are then destroyed.

Fiona Robinson

francesgynn.co.uk



Lucy Willis

lucywillis.com

EVOLVER MAGAZINE

DEADLINE FOR NEXT ISSUE

November and December 2024

MONDAY 7 OCTOBER

BRIDPORT ARTSCENTRE



Supported using public funding by
ARTS COUNCIL
ENGLAND



Gerry Dudgeon | 1952 - 2023 *A Life in Painting*

SATURDAY 7 SEPTEMBER - SATURDAY 12 OCTOBER 2024

ALLSOP GALLERY | OPEN 10AM - 4PM TUE - SAT | FREE ENTRY

RWA

171

Annual Open Exhibition

Explore over 600 artworks by emerging and established artists working in a variety of mediums. All artwork available for sale.

14 September - 5 January 2025

rwaopen.co.uk

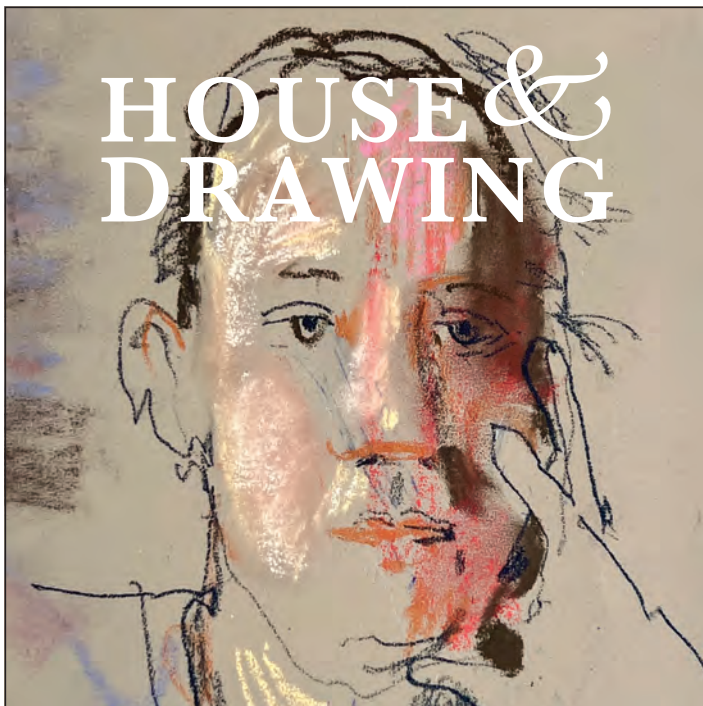
Royal West of England Academy,
Queens Road, Clifton, Bristol, BS8 1PX

Chowwai Cheung, Mountain Ridges I

This exhibition is sponsored by



HOUSE & DRAWING



Retrospective and new drawings by Felicity House

7 September to 13 October 2024

RED HOUSE MUSEUM AND GARDENS, QUAY ROAD, CHRISTCHURCH, BH23 1BU
01202 482860 / hampshireculturetrust.org.uk/red-house-museum-and-gardens



Hampshire Cultural Trust is a registered charity (no. 1158583) and company (no. 08986225) in England and Wales.

Visual Arts



'DOG HOUSE HILL'

Frances Hatch: Mundane Miracles

"Frances's way of being with the land is multi-sensory and whole-bodied. Hands-on and messy. Her paintings emerge as team-works and containers of shared experience. Surrender attachment to outcome, relinquish control, and then the magic can begin..."

Until 30 September: North Wing Level 1, Dorset County Hospital, William Avenue, DORCHESTER, DT1 2JY. 8am - 8pm. 01305 253424 / dchartsinhospital.org.uk.

SOMERTON GROUP OF ARTISTS

3 - 7 September

The Parish Rooms, Market Square, SOMERTON, TA11 7LZ. Tuesday - Friday 10am - 4pm, Saturday 10am - 3pm. somerthonartists.co.uk. "Wide range of works for sale by local artists."

'DUSK UNTIL DAWN'

4 - 10 September

The Gallery, Shaftesbury Arts Centre, Bell Street, SHAFTESBURY, SP7 8AR. Monday - Saturday 10am - 4pm. shaftesburyartscentre.org.uk. "Exhibition of painting, photography and poetry by Rachel Sargent, Catherine Simmonds, and Justin Orwin, reflecting on the visual and emotional effect that the hours between dusk and dawn have on us."

NIC RAWLING AND FRIENDS

4 - 15 September

Walford Mill Crafts, Knobcrook Road, WIMBORNE, BH21 1NL. Wednesday - Saturday 10am - 5pm, Sunday 11am - 4pm. 01202 841400 / walfordmillcrafts.co.uk. "Artworks by Nic Rawling, Imogen Charleston, Lee Jones, Rosa Morris, and Maria Wiewson."

'THE ETHICAL ENTOMOLOGIST'

4 - 21 September

Willow Art & Antique, 70 High Street, CORSHAM, SN13 0HF. Wednesday - Saturday 10am - 5pm. 07811 277917 / carolinerudge.com. "Original tetrapak prints and entomology specimens. Big, small, beautiful, unusual and quirky Lepidoptera species - all made of paper!"

SOMERSET PRINTMAKERS

30th OCTOBER – 16th NOVEMBER
10am - 4pm (Closed Sunday and Monday)

**Wells and Mendip
Museum**
Cathedral Green Wells BA5 2UE

**MEET
THE ARTISTS**
Sat 2nd November
11am to 2 pm

((acoustic))

DISTRIBUTION

Delivering all your marketing materials

Call Will on 07397 853006
info@acousticdistribution.co.uk
acousticdistribution.co.uk

Visual Arts

'EVOLVING DIMENSIONS'

4 - 27 September

Artwave West, MORCOMBELAKE, DT6 6DY. Wednesday - Saturday 10am - 5pm. 01297 489746 / artwavewest.com. "Sculpture by Louise Plant, and paintings by Elfyn Lewis. Viewers will explore the fluid boundaries between physicality and abstraction, and will experience the transformative power of artistic shapes."

'CONVERGENCE'

6 - 8 September

Hours, 10 Colston Yard, BRISTOL, BS1 5BD. Friday 6 - 9pm, Saturday and Sunday 11am - 5pm. 07766 054659 / hours-space.com. "Prints, paintings, and ceramics by Jenny Life, Sandra Cocks, and Jenny McGee."

PRINTMAKING EXHIBITION

6 - 8 September

West Barn, Pound Land, BRADFORD-ON-AVON, BA15 1LF. 10am - 4.30pm. 07398 549893. Prints by Judith Cole, John Dyer, Tanya Reid, and June Wagstaff.

MOSTERTON ART GROUP

6 - 8 September

Beaminster Town Hall, Fleet Street, BEAMINSTER, DT8 3TF. Friday 6 - 8pm, Saturday 10am - 7pm, Sunday 10am - 4pm. 07766 451040.

'ARTBEAT'

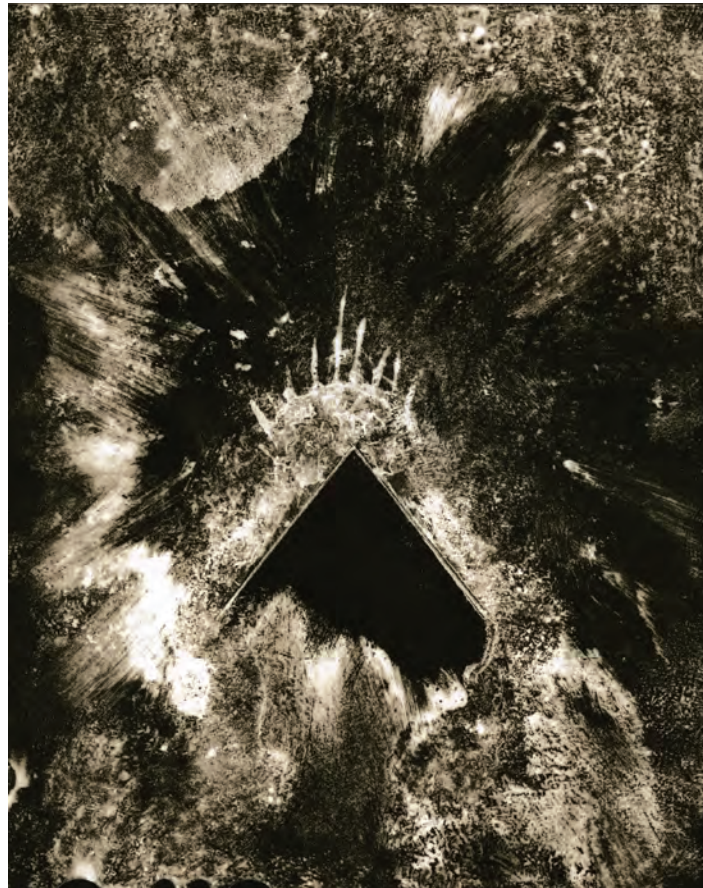
6 - 15 September

Kennaway House, Coburg Road, SIDMOUTH, EX10 8NG. 10am - 5pm. 07770 809571 / kennawayhouse.org.uk. "Annual exhibition of painting, printmaking, cards, and more, by Laura Boyd, Susan Paradise, David Hughes, Di Briggs, Zan Nye, June Murrell, Jan Shaylor, Bente Kumar, Michelle Kennedy, and Stephanie George."

'ARTISTS OF THE JURASSIC COAST'

6 - 29 September

Eype Centre for the Arts, St Peters Church, EYPE, near Bridport, DT6 6AR. 10.30am - 4.30pm. 07739 905501 / lynnegrace.co.uk. "Seven artists exhibit pottery, paintings, prints, and ceramics."



'FIRMAMENT'

Tim Pearse: Aspect

"Tim Pearse is an award-winning fine art and portrait photographer and a master printer with a rare and precious knowledge of heritage techniques. *Aspect* brings together a selection of Pearse's photographs made over the last decade. These exquisite individual works encompass themes of introspection and self-reflection as a tool to know, moments invented to illustrate the texture of perception and attempts to navigate within the cacophony of an ever-changing world."

23 October - 24 November: The Pound Arts Centre, Pound Pill, CORSHAM, SN13 9HX. 01249 701628 / poundarts.org.uk.

'MATERIAL ALCHEMY'

7 - 22 September

Sou'-Sou'-West Arts Gallery, Symonds Estate, BRIDPORT, DT6 6HG. 10.30am - 4.30pm. 01308 301326 / sousouwest.co.uk.

'TRIPLE VISION'

7 September - 5 October

Fisherton Mill, 108 Fisherton Street, SALISBURY, SP2 7QY. Monday - Saturday 9.30am - 5pm. 01722 415121 / fishertonmill.co.uk.



GERRY DUDGEON: 'A LIFE IN PAINTING'

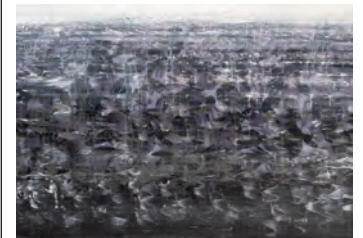
7 September - 12 October

Bridport Arts Centre, 9 South Street, BRIDPORT, DT6 3NR. Tuesday - Saturday 10am - 4pm. 01308 424204 / bridport-arts.com. "A retrospective exhibition celebrating the life and work of renowned Dorset-based artist Gerry Dudgeon, who died in October 2023."

FELICITY HOUSE: HOUSE & DRAWING'

7 September - 13 October

Red House Museum & Gallery, Quay Road, CHRISTCHURCH, BH23 1BU. Wednesday - Saturday 10am - 4pm, Sunday 12noon - 4pm. 01202 482860 / hampshireculture.org.uk. "Solo exhibition of drawings and paintings, both retrospective and current."



GARETH LLOYD: 'NURTURING SHADES AND LEADING PIECES'

7 September - 7 November

Unit 7, Old Mill Business Park, Station Road, BRUTON, BA10 0BX. 10am - 4pm. 01749 705778 / feincollections.com. "Selected key pieces from 40 years' worth of prodigious mixed media work, with a new series of paintings and a contrasting triptic."

'AFTER ALL'

10 - 21 September

No. 1 West Street, SOMERTON, TA11 7PS. 10am - 4.30pm. 07968 050526.

103rd Annual Exhibition

The Gallery Upstairs

Upton Country Park, Poole Road, Poole, BH17 7BJ

Thursday 26 September - Monday 7 October

Open daily 10am - 5pm

New work from members including paintings, drawings, prints and 3D works, selected by multi-award-winning Hampshire artist Julie Collins

Joan Scott 'Quarry' (acrylics, mixed media)



BOURNEMOUTH
ARTS
CLUB

bournemouthartsclub.co.uk

MANDY SELHURST: 'FAVOURITES'

11 - 24 September

Sou'-Sou'-West Arts Gallery,
Symonds Estate, BRIDPORT,
DT6 6HG. 10.30am - 4.30pm. 01308
301326 / sousouwest.co.uk.

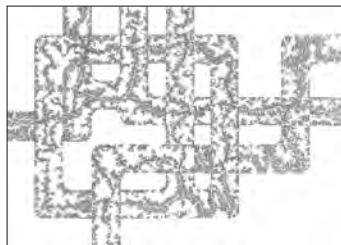


ZARA MCQUEEN: '2021 - 2024'

11 - 24 September

The Gallery, Shaftesbury Arts
Centre, Bell Street, SHAFTESBURY,
SP7 8AR. Monday - Saturday 10am -
4pm. zara-mcqueen.co.uk.

"Drawing, painting, sculpture and
installation, focused on a personal
autobiographical theme."



ZARA SAGANIC: 'PAUSE'

13 September - 15 October

Mowlem Theatre, Shore Road,
SWANAGE, BH19 1DD. Monday,
Wednesday, Friday and Saturday
11am - 1.30pm, Monday - Saturday 6
- 10.30pm. themowlem.com. "Zara's
work attempts to capture and
control via marks, repetition, detail,
endurance, scale, intricacy and
numeracy. Drawings are
documents and archives of time,
collated and recorded as artefacts."



LISE HERUD BRATEN

'Sky Lines'

"Alex Lowery's stunning new paintings of Portland and Lyme Bay (with Orkney, Greece and Sicily) introduce bright new colours and an upbeat mood. Many of us have followed his work over the years and it is exciting to see him finding new ways of looking at our much-loved coastline. Showing for the first time at Sladers Yard is ceramicist Lise Herud Braten, a Norwegian rising star based in London, whose highly textured vessels and forms reflect the natural rugged landscape of Norway. She joins our resident Norwegian, Petter Southall, whose creations in wood bring a Scandinavian design sensibility and love of the sea, with world-class craftsmanship to our Dorset coastline and magnificent Northern European trees."

21 September - 3 November: Sladers Yard, WEST BAY, Bridport,
DT6 4EL. Wednesday - Saturday 10am - 4.30pm. 01308 459511 /
sladersyard.co.uk.

ANNE JACKSON: 'THE WITCHCRAFT SERIES'

14 September - 2 November

Thelma Hulbert Gallery, Dowell
Street, HONITON, EX14 1LX. Tuesday
- Saturday 10am - 5pm. 01404
45006 / thelmahulbert.com.

"Exhibition by Anne Jackson
exploring the history of witch trials
and the power of 'the witch' in our
culture, through tapestries often
depicting the trials of specific
historic 'witches' from Somerset
and Devon."

PHILIPPA LAWRENCE: 'A SPACE BETWEEN'

14 September - 2 November

Thelma Hulbert Gallery, Dowell
Street, HONITON, EX14 1LX. Tuesday
- Saturday 10am - 5pm. 01404
45006 / thelmahulbert.com. "Solo
exhibition by Philippa Lawrence
showcasing new and developing
works, including a creative
response to the life and work of
artist Thelma Hulbert."

'SPINNING A YARN'

14 September - 30 November

Somerset Rural Life Museum,
Chilwell Street, GLASTONBURY,
BA6 8DB. Tuesday - Sunday 10am -
5pm. £9.35 / £7.65 / £4.40. 01458
831197 / srlm.org.uk. "This
partnership with Somerset Art
Works tells the story of wool in
Somerset. Includes a new
commission by Nicola Turner, film
by Trevor Pitt, and contemporary
wool artworks by local makers."

171 ANNUAL OPEN EXHIBITION

14 September - 5 January

RWA, Queen's Road, BRISTOL, BS8
1PX. Tuesday - Sunday 10am - 5pm.
£9.90 / £5.45. rwaopen.co.uk. "Now
in its 171st year, the RWA brings you
the Annual Open Exhibition,
showcasing some of the most
exciting artists from across the
country and beyond."

'PORTH, GATEWAY TO THE WORLD'

16 - 22 September

44AD Gallery, 4 Abbey Street, BATH,
BA1 1NN. 10am - 5pm. 07811 102216 /
alisonsheltonbrown.art. "South
West & Wales Fine and Applied
Artists touring show featuring
jewellery, ceramics, textiles,
photography, sculpture, painting,
leather, glass, and enamel."

'THE REALLY WILD SHOW'

17 September - 10 November

Rotunda Gallery, Lyme Regis
Museum, Bridge Street, LYME
REGIS, DT7 3QA. Tuesday - Saturday
10am - 5pm, Sunday 10am - 4pm.
lymeregismuseum.co.uk. "Dorset-
based artist Trisha Hayman shares
her love of the natural world in her
latest exhibition of paintings, prints
and cards."

John Hitchens: Migrating Thoughts

7 September - 26 October



**Chippenham
Museum**
Chippenham Town Council

Monday-Saturday, 10am-4pm
01249 705020
heritage@chippenham.gov.uk
www.chippenham.gov.uk/chippenham-museum



© John Hitchens, image: Anne Purkiss



Zara McQueen: 2021-2024

11 - 24 SEPTEMBER

The Gallery, Shaftesbury Arts Centre, 13 Bell Street,
Shaftesbury, Dorset SP7 8AR

10am - 4pm daily

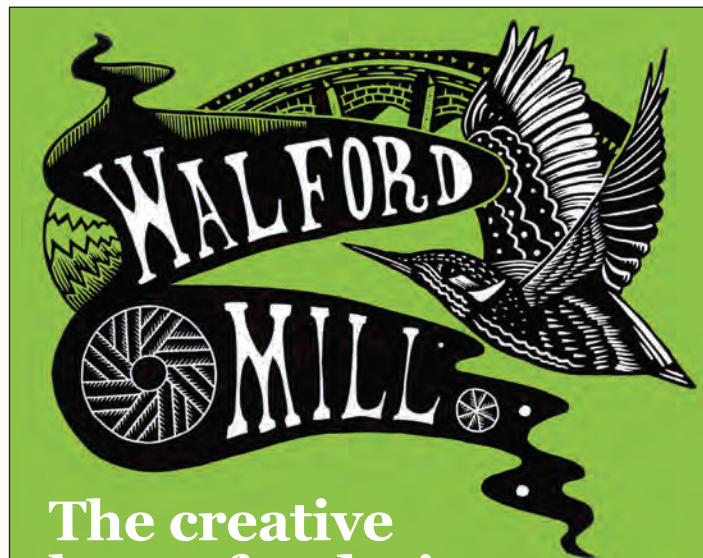
Instagram: @zara_mcqueen • zara-mcqueen.co.uk

BULL MILL STUDIO

OPEN first Saturdays- 7 Sept / 5 Oct / 2 Nov



BULL MILL, CROCKERTON, WARMINSTER. BA12 8AY
nickandrew.co.uk tanyahinton.co.uk 07730 400784



The creative home for designer makers in Dorset

At Walford Mill Crafts you'll find exciting exhibitions from established artists, as well as pop-up opportunities for up and coming makers. Book the kids on a children's art class or treat yourself to an inspirational craft workshop.

Visit our on-site makers in their open studios and enjoy a wonderful lunch at the Little Pickle cafe. Courtyard craft markets are held every second Saturday from March.

www.walfordmillcrafts.co.uk

Knobcrook Road, Wimborne BH21 1NL Registered Charity No. 1049540

Affordable studio spaces available - admin@walfordmillcrafts.co.uk



SWAC

South West Academy Open Exhibition 2024

CALL FOR ENTRIES: 2D AND 3D ARTISTS

Exhibition dates: 29 October - 9 November

at Kennaway House, Sidmouth, Devon EX10 8NG

Entry Deadline: Midnight, 17 September 2024

Enter online via southwestacademy.org.uk

Artwork images from Open Exhibition 2023

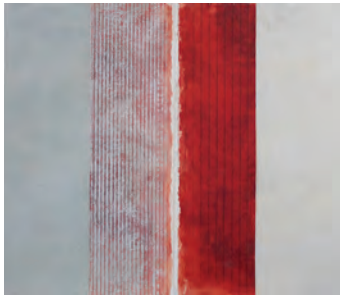
hanging service
exhibitions
classes
curation
space hire

studio53
S53

professional and personal service
-EST-
2012

www.studio53space.co.uk

07967186956



'PAST AND PRESENCE'

18 - 24 September

That Art Gallery, 2 Upper Maudlin Street, BRISTOL, BS2 8DJ. 11am - 6pm. thatartgallery.com. "Paintings, drawings and prints by Christopher Binding. Pared down flat fields of colour - textures and materials responding to each other in balance and tension."

Above: 'Cleft'

AARON FEWINS

18 - 29 September

Walford Mill Crafts, Knobcrook Road, WIMBORNE, BH21 1NL. Wednesday - Saturday 10am - 5pm, Sunday 11am - 4pm. 01202 841400 / walfordmillcrafts.co.uk. "Expressive and dynamic paintings."

'STITCHING 4 ALL'

19 - 21 September

Bath and West Showground, SHEPTON MALLET, BA4 6NS. 10am - 5pm. £11 / £10. 0117 370 3342 / craft4crafters.co.uk.

JOE JUKE: 'SUMMER PEOPLE'

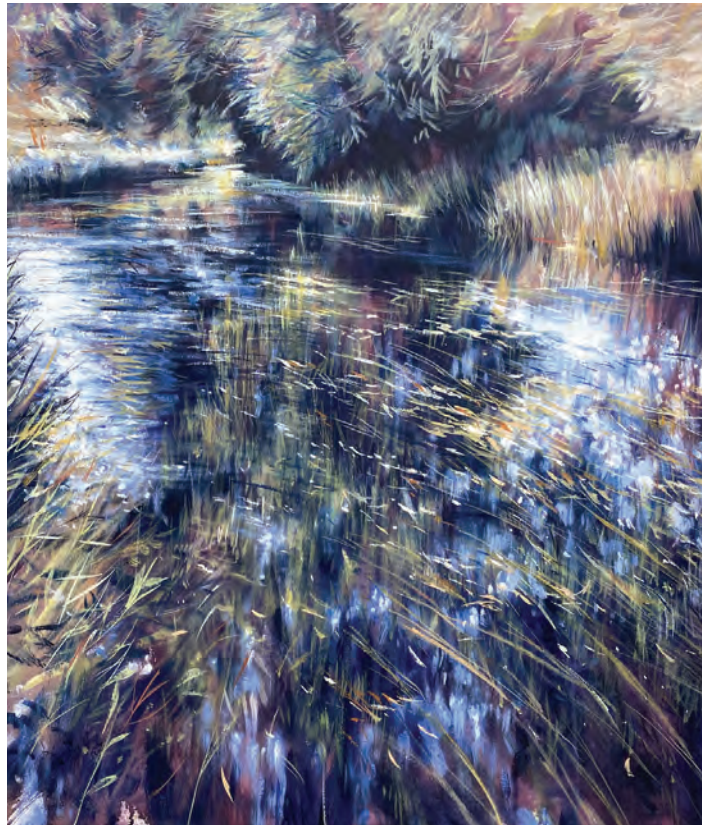
19 September - 19 October

The Pound Arts Centre, Pound Pill, CORSHAM, SN13 9HX. 01249 701628 / poundarts.org.uk. "In the context of rising social division, inequity and climate crisis, Joe Jukes crafts and performs alternative narratives to place through textiles and moving images."

IAN COTTON: 'TIDAL POOLS'

19 September - 19 October

The Pound Arts Centre, Pound Pill, CORSHAM, SN13 9HX. 01249 701628. "Ian Cotton's sculptural works reflect his passion for wild swimming and the architecture of tidal pools as liminal spaces, where the threshold between the body and the world becomes blurred."



NICK ANDREW 'CANNINOLA' (Acrylic and oil on canvas, 81 x 81 cm)

Bull Mill Studio First Saturdays

"Monthly open studio exhibition. Contemporary landscape painting and drawing projects by Nick Andrew, wildlife art on reclaimed wood by Tanya Hinton, and jewellery by Stephanie Gilbert."

7 September and 5 October: Bull Mill Studio, Bull Lane, CROCKERTON, Warminster, BA12 8AY. 10am - 5pm. 07730 400784 / nickandrew.co.uk / tanyahinton.co.uk.

SERENA KORDA: 'WILD APPLES'

21 September - 5 January

Galleries 1 + 2, East Quay, Harbour Road, WATCHET, TA23 0AQ. 10am - 5pm. eastquaywatchet.co.uk. "An exhibition exploring womanhood, with a particular focus on the transformative phase of menopause, through a series of newly commissioned sculptures modelled on real, West Country women."

'WATER - WASSER - AQUA - H2O'

23 September - 6 October

The Malthouse Gallery, Town Mill, LYME REGIS, DT7 3PU. 10.30am - 5pm. 07847 280806. "Exhibition of photography, video, sound, objects, texts, talks, water rituals, and music. Eva Fahle-Clouts, in collaboration with David Rogers, will share her love of water and reflections on protecting this precious substance."

SOUTH WEST TEXTILES:

'BORDERLINES'

24 September - 12 October

Ilminster Arts Centre, The Meeting House, East Street, ILMINSTER, TA19 0AN. Tuesday - Saturday 9.30am - 3pm. themeetinghouse.org.uk.

PERCY LIZZARD: 'EXOTICA'

25 September - 8 October

The Gallery, Shaftesbury Arts Centre, Bell Street, SHAFTESBURY, SP7 8AR. Monday - Saturday 10am - 4pm. shaftesburyartscentre.org.uk. "Paintings and drawings inspired by exotic travels and experiences."

MARIAN YOUNG: 'A SENSE OF PLACE'

25 September - 8 October

Sou'-Sou'-West Arts Gallery, Symonds Estate, BRIDPORT, DT6 6HG. 10.30am - 4.30pm. 01308 301326 / sousouwest.co.uk.



'RHYTHM OF THE TONE'

27 - 29 September

Arts Hub, Flook House, Belvedere Road, TAUNTON, TA1 1BT. 10am - 9pm. artshub.uk. "Artworks created by Taunton's Arts Hub collective, including printmaking, drawing, painting and 3-D installations."

Above: Adam Grose 'River Tone' (Screenprint, 37 x 27 cm, July 2024)

'ART TO ART'

28 and 29 September

West Barn, Pound Lane, BRADFORD-ON-AVON, BA15 1LF. 10am - 4pm. 07811 102216.

BATHEASTON ART TRAIL

28 and 29 September

Various locations in BATHEASTON, BA1. 11.30am - 5.30pm. 07866 299441 / growbatheaston.co.uk. "Painters, ceramicists, illustrators, graphic designers, textile artists, sculptors, and printers display work in studios and shared venues."



SLADERS' SUMMER PRINT SHOW

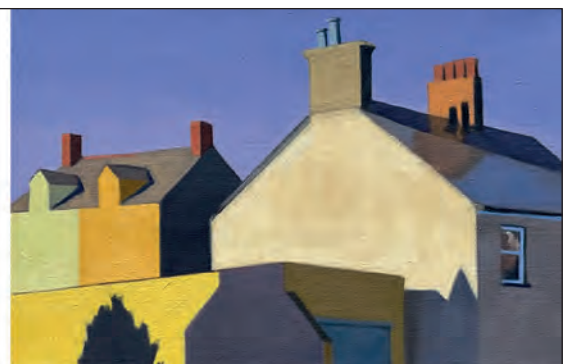
Laura Boswell • Martyn Brewster
Merlyn Chesterman • Nick Jones
Anita Klein • Sally McLaren
Roger Hardy sculpture until 15 September

SKY LINES from 21 September

Alex Lowery recent paintings
Lise Herud Braten studio ceramics
Petter Southall furniture

SLADERS YARD

Contemporary Art & Craft Gallery West Bay DT6 4EL
t: 01308 459511 www.sladersyard.co.uk



Lunch at CAFÉ SLADERS

Wednesday - Sunday* 10am - 4.30pm

Alex Lowery Portland 180 2024 oil on linen 30 x 45cm
Left: Laura Boswell Highland Pine ed.14 linocut 71.5 x 54cm

Visual Arts

WINSHAM ART GROUP

28 and 29 September

The Jubilee Hall, WINSHAM, TA20 4HU. 10am - 5pm. 01460 30441.

CQ WEST GROUP: 'UNFOLDING STORIES 6'

28 September - 13 October

Sou'-Sou'-West Arts Gallery, Symondsbur Estate, BRIDPORT, DT6 6HG. 10.30am - 4.30pm. 01308 301326 / sousouwest.co.uk.

DEBBIE LEE: 'STORYBOUND'

28 September - 2 November

The Slade Centre, The Square, Gillingham, SP8 4AY. Tuesday - Friday 9.30am - 4pm, Saturday 9.30am - 2pm. 07775 431652 / thesladecentre.com. See page 3.

'REACTIONS'

28 September - 3 November

The Museum of Bath at Work, Julian Road, BATH, BA1 2RH. 10.30am - 5pm. 07543 657876 / bath-at-work.org.uk. "Five artists - Alison Jackson-Bass, Anna van der Putte, Jane Hildreth, Philip Crewe, and Sarah-May Rogers - respond to the museum collection using projected light, alternative photography, ceramics, drawing, metalwork, assemblage."

TIGGY RAWLING

2 - 13 October

Walford Mill Crafts, Knobcrook Road, WIMBORNE, BH21 1NL. Wednesday - Saturday 10am - 5pm, Sunday 11am - 4pm. 01202 841400 / walfordmillcrafts.co.uk.

MARTIN GOOLD: 'FLUID PRECISIO'

2 - 26 October

Artwave West, MORCOMBELAKE, DT6 6DY. Wednesday - Saturday 10am - 5pm. artwavewest.com.

SIAN CANN: 'RIPPLES RUN DEEP'

5 October - 9 November

ACE Arts, Market Place, SOMERTON, TA11 7NB. Tuesday 11am - 5pm, Wednesday - Saturday 10am - 5pm. acearts.co.uk. "Using cameraless photography and other experimental photographic techniques, the artist reveals the surprising and unseen visual poetry of water and invites you to see this life-giving force in a whole new way."



WILLOW TAYLOR

Devon Open Studios

"Artists all over Devon will be throwing open their doors this September and inviting people to look behind the scenes of an artist's studio. The county's creative people will be demonstrating and showcasing their work in attics, sheds, galleries and other creative spaces. The art and craft on display will include drawing, painting, sculpture, tapestry, ceramics, jewellery and glasswork. Artists range from new talent to experienced professionals, all keen to share their inspiration and creativity with visitors. Many of the artists have taken their inspiration from the natural world - flora and fauna, coast and countryside."

7 - 22 September: Various locations throughout DEVON.

devonartistnetwork.co.uk.



OCTAVIA MADDEN



SUSIE HONNOR

LIANE STEVENSON: 'MUSES'

5 October - 16 November

Craft, 12 St James Parade, BATH, BA1 1UL. Tuesday - Saturday 11.30am - 5.30pm. craftbath.uk. "Series of figurines carved from foraged woodland timber, reminiscent of small votive sculpture from ancient Greek and Roman culture, and intended to invite contemplation."

BELINDA BARRIE

9 - 15 October

The Gallery, Shaftesbury Arts Centre, Bell Street, SHAFTESBURY, SP7 8AR. Monday - Saturday 10am - 4pm. shaftesburyartscentre.org.uk. Drawings.

'JOURNEYS'

11 - 27 October

Sou'-Sou'-West Arts Gallery, Symondsbur Estate, BRIDPORT, DT6 6HG. 10.30am - 4.30pm. 01308 301326 / sousouwest.co.uk.

MORAG BALLARD

12 - 26 October

Andelli Art, Mendip House, Upper Breach, South Horrington, WELLS, BA5 3QC. Tuesday - Saturday 10am - 5pm. 07790 030506 / andelliart.com.

'LINE OF SIGHT'

12 October - 2 November

Fisherton Mill, 108 Fisherton Street, SALISBURY, SP2 7QY. Monday - Saturday 9.30am - 5pm. 01722 415121 / fishertonmill.co.uk.

FROG LANE ARTISTS

15 October - 9 November

Ilminster Arts Centre, The Meeting House, East Street, ILMINSTER, TA19 0AN. Tuesday - Saturday 9.30am - 3pm. themeeetinghouse.org.uk.

JESS SIMS: 'FEELING WOOLLY!'

16 - 22 October

The Gallery, Shaftesbury Arts Centre, Bell Street, SHAFTESBURY, SP7 8AR. Monday - Saturday 10am - 4pm. shaftesburyartscentre.org.uk. "Jess is a felter."

WELLS PAINTING GROUP

16 - 26 October

Wells and Mendip Museum, 8 Cathedral Green, WELLS, BA5 2UE. Tuesday - Saturday 10am - 4pm. 07968 050526.



**Black Swan Arts
Open 2024**

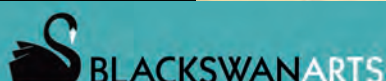
Until 15 September



Traces of Time

21 September to 27 October

galleries | studios | shop | cafe
2 Bridge Street, Frome BA11 1BB



01373 473980 | www.blackswanarts.org.uk

FREE ENTRY Registered Charity No. 292463

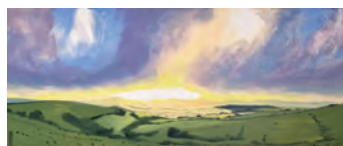


AMIT ESHEL 'LIFE ON THE EDGE'

Wildlife Photographer of the Year

"Over 100 powerful photographs capture fascinating animal behaviour, spectacular species, and the breathtaking beauty of our planet. The images shine a light on stories and species from around the world and show the impact of human activity on the planet, in ways that words cannot."

19 July - 3 November: Dorset Museum & Art Gallery, High West Street, DORCHESTER, DT1 1XA. 10am - 5pm. 01305 262735 / dorsetmuseum.org.



KIT GLAISYER
16 - 27 October

Jubilee Hall, POUNDBURY, DT1 3BW. 10am - 6pm. 07983 465789 / kitglaisyer.com. "A major two-week exhibition of dramatic, large-scale landscape paintings. Kit grew up in North Dorset, painting alongside his father, deeply inspired by John Constable and the British Watercolour tradition. His paintings were further transformed by five years as an abstract painter in London, before moving to West Dorset and creating his spectacular series of cinematic paintings."

'WHIMSY'

16 October - 3 November
Walford Mill Crafts, Knobcrook Road, WIMBORNE, BH21 1NL. Wednesday - Saturday 10am - 5pm, Sunday 11am - 4pm. 01202 841400 / "Illustrations and silver jewellery by Barry Grayson and Wendy Nutt."

'ASPIRING ARTISTS'

18 - 20 October
Gather Exhibition Space, Dolphin Shopping Centre, POOLE, BH15 1SZ. : 10am - 3.30pm. 01202 673906 / pedas.org.uk. "Art exhibition by local school children."

'PEDAS 100 UNLEASHED'

18 October - 4 November
The Gallery Upstairs, Upton Country Park, POOLE, BH17 7BJ. 10am - 4.30pm. thegalleryupstairs. "New work by members of Poole and East Dorset Art Society (PEDAS)."

'ELEMENTAL'

19 October - 10 November
Sou'-Sou'-West Arts Gallery, Symonds Estate, BRIDPORT, DT6 6HG. 10.30am - 4.30pm. 01308 301326. "Artworks made from natural or recycled materials by Fiona Campbell, Jan Alison Edwards, and Ally Matthews."

RINKO KAWAUCHI: 'AT THE EDGE OF THE EVERYDAY WORLD'

19 October - 9 February
Arnolfini, 16 Narrow Quay, BRISTOL, BS1 4QA. Tuesday - Sunday 11am - 6pm. 0117 917 2300 / arnolfini.org.uk. "Celebrating over twenty years of extraordinary practice, internationally acclaimed Japanese photographer Rinko Kawauchi's poetic images find beauty in the ordinary moments of everyday life."

CQ WEST: 'UNTOLD STORIES'

23 - 29 October

The Gallery, Shaftesbury Arts Centre, Bell Street, SHAFTESBURY, SP7 8AR. Monday - Saturday 10am - 4pm. 01747 855243 / shaftesburyartscentre.org.uk. "Contemporary Quilters show an eclectic range of styles and techniques."

NEGATIVE THINKING: 'SHADOW WORK'

23 October - 24 November

The Pound Arts Centre, Pound Pill, CORSHAM, SN13 9HX. 01249 701628. "Shadow Work represents the diverse array of practical and conceptual approaches to photography shared by the members of the Negative Thinking community Darkroom."

'DEVIANT'

25 - 27 October

Hours, 10 Colston Yard, BRISTOL, BS1 5BD. Friday 7 - 9pm, Saturday and Sunday 11am - 5pm. 07766 054659 / hours-space.com. "Women's voices on sex and erotica, often struggle for space. Poet Tracy Heather Johnson and illustrator Juliet Sugg place those voices front and centre, confronting the viewer and reader."

ILONA SKLADZIEN: 'WASHING LINE MELODY'

26 October - 16 November
Bridport Arts Centre, 9 South Street, BRIDPORT, DT6 3NR. Tuesday - Saturday 10am - 4pm. 01308 424204 / bridport-arts.com. "Through sculpture, installation, and drawings, Iлона highlights the evolving dynamics and materials experienced in parenthood."

ANNA HOFFMAN

29 October - 11 November
Sou'-Sou'-West Arts Gallery, Symonds Estate, BRIDPORT, DT6 6HG. 10.30am - 4.30pm. 01308 301326 / sousouwest.co.uk.

SOMERSET PRINTMAKERS

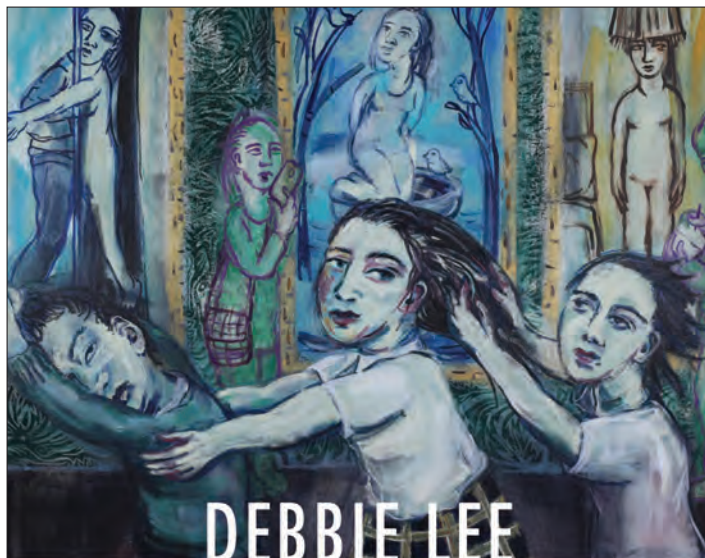
30 October - 16 November
Wells and Mendip Museum, Cathedral Green, WELLS, BA5 2UE. Tuesday - Saturday 10am - 4pm. 07708 406888 / somersetprintmakers.co.uk.

Kit Glaisyer

'Cinematic Landscape Paintings'

Bridport Contemporary - Open Every Saturday 10am to 4pm
11 Downes Street, Bridport, Dorset DT6 3JR
07983 465789 @kitglaisyer.com www.kitglaisyer.com

Cinematic Landscape Paintings
Jubilee Hall, Poundbury, Dorchester DT1 3BW
Open 10am - 6pm. Weds 16 to Sun 27 October 2024



DEBBIE LEE STORYBOUND

Storytelling is as fundamental a part of our cultural history as it is of our imagination. Debbie Lee weaves this tradition into her work with wit, warmth and a dash of cautionary shade.

It is a joy to curate an exhibition of figurative work which showcases a retelling of classic texts creatively embroidered with events from Debbie's day to day.

You are invited to a Private View on Friday 4th October from 6:30pm to celebrate this magical collection of work.

AT THE SLADE CENTRE

28th September to 9th November

www.thesladedecentre.com for opening times



BOILERHOUSE GALLERY

Contemporary art and craft
in a wonderful location

Sandy Hill Lane, Corfe Castle BH20 5JF
07398 052489 • boilerhousegallery.co.uk



Sou'-Sou'-West
Symondsburry Estate
Bridport DT6 6HG

7-22 Sept
Material Alchemy
Group Show

11-24 Sept
Favourites
Mandy Selhurst

25 Sept-08 Oct
A Sense of Place
Marian Young

28 Sept-13 Oct
Unfolding Stories 6
CQ West Group

11-27 Oct
Journeys
*Call for entries


19 Oct-10 Nov
Elemental
Group Show


29 Oct-11 Nov
Anna Hoffman

16 Nov-09 Jan
Make It Open
*Call for Makers

16 Nov-09 Dec
Winter Open
*Call for entries

*See website for details

 Supported using public funding by
ARTS COUNCIL ENGLAND

 **Dorset Council**

Gallery & Shop
Daily: 10:30 - 16:00

@sossouwestgallery
sossouwest.co.uk




Image courtesy of Fiona Campbell MRSS

reactions



28 September - 3 November

Museum of
Bath Work

Five artists respond to the museum
and its collection

Julian Road BA1 2RH bath-at-work.org.uk

Music

September and October 2024

IAIN BALLAMY QUARTET

5 September

SoundCellar, The Grasshopper, 139 - 141 Bournemouth Road, POOLE, BH14 9HT. 8pm. £17.50 / £10. soundcellar.org. Jazz.



VÉRONIQUE JOLY AND ROB PALMER

6 and 7 September

Tincton Gallery, The Old School House, TINCLETON, near Dorchester, DT2 8QR. 7.30pm. £15. tinctongallery.com. "An evening of Bossa Nova jazz with Paris born jazz singer Véronique Joly and guitarist Rob Palmer."

THE BOYD SHAW TRIO

7 September

ACE Arts, Market Place, SOMERTON, TA11 7NB. 7pm. £14. 01458 273008 / acearts.co.uk.



NICOLA FARNON TRIO

13 September

Bridport Arts Centre, 9 South Street, BRIDPORT, DT6 3NR. 8pm. £14 / £12 / £5. bridport-arts.com. "Singer, bassist and songwriter Nicola is a distinguished name on the UK jazz scene, with a passionate and swinging style, and a charismatic stage presence to match."



The Lost Trades

"The Lost Trades are a folk / Americana trio with a sound that is reminiscent of the California folk scene of the '60s and '70s. Their three-part harmonies have been described as 'flawless'."

14 September: The Pound Arts Centre, Pound Pill, CORSHAM, SN13 9HX. 7.30pm. £14. 01249 701628 / poundarts.org.uk.



TOM MCRAE

13 September

The Pound Arts Centre, Pound Pill, CORSHAM, SN13 9HX. 7.30pm. £23.50. poundarts.org.uk. "Tom McRae performs songs from *Étrange Hiver*, an album that explores themes of love, loss, and political and environmental issues, offering a mix of cinematic and intimate songs and moments."

JOHNNY MARS + THE CRAIG MILVERTON QUARTET

13 September

Ilminster Arts Centre, The Meeting House, East Street, ILMINSTER, TA19 0AN. 7.30pm. £20 / £18. 01460 54973 / themeetinghouse.org.uk. Jazz.

PRISTON MUSIC FESTIVAL

13 - 15 September

Village Hall and Green, PRISTON, Bath, BA2 9EE. priston.org.uk. "Pop, folk, rock, Americana, and country."

ALICE ZAWADZKI, FRED THOMAS, AND MISHA MULLOV-ABBADO

14 September

Sandy Hill Arts, Sandy Hill Lane, CORFE CASTLE, BH20 5JF. 7.30pm. £18 / £10. sandyhillarts.co.uk. "Alice's exquisite vocals and violin, Fred's magnificent piano and drums and Misha's refined acoustic bass will enthrall, engage and entertain."

THE AMY WINEHOUSE BAND

14 September

Lighthouse, 21 Kingland Road, POOLE, BH15 1UG. 8pm. 01202 280000 / lighthousepoole.co.uk.

ALICE ZAWADZKI, FRED THOMAS, MISHA MULLOV-ABBADO

14 September

SoundCellar, The Grasshopper, 139 - 141 Bournemouth Road, POOLE, BH14 9HT. 7.30pm. £18 / £10. soundcellar.org.

TARREN

17 September

Lighthouse, 21 Kingland Road, POOLE, BH15 1UG. 7.30pm. 01202 280000 / lighthousepoole.co.uk. "English folk music. Bristol-based Sid Goldsmith, Alex Garden, and Danny Pedler combine cittern and concertina, fiddle, and accordion."

BSO: 'DVOŘÁK EIGHT'

18 September

Weymouth Pavilion, The Esplanade, WEYMOUTH, DT4 8ED. 7.30pm. £29 / £16. 01202 669925 / bsolive.com. "Journey from the Czech countryside to the Hebridean sea with the grand symphonies of Dvorak, Mozart and Mendelssohn, contrasted by the delicate simplicity of Faure's Pavane."



KASPER RIETKERK'S KRSIX

19 September

SoundCellar, The Grasshopper, 139 - 141 Bournemouth Road, POOLE, BH14 9HT. 8pm. £17.50 / £10. soundcellar.org. Jazz.

DEAN CARTER

20 September

Digby Memorial Hall, Digby Road, SHERBORNE, DT9 3LN. 8pm. £8. centreforpuresound.org.



AXE & TRAP STUDIOS IS A RECORDING FACILITY SITUATED AT THE FOOT OF THE MENDIP HILLS IN WELLS, SOMERSET.

Three performance spaces, 24 channel Trident console, extensive analogue outboard and much more.

Take a tour at
AXEANDTRAPSTUDIOS.COM

MIKE DENHAM'S SPEAKEASY

20 September

Ilminster Arts Centre, The Meeting House, East Street, ILMINSTER, TA19 0AN. 7.30pm. £20. 01460 54973.

"Swing jazz in the Hot Club style!"

WILL COLLIER'S CHET BAKER PROJECT

20 September

The Corn Exchange, High East Street, DORCHESTER, DT1 1HF. 7pm. £18 / £16. 01305 266926. Jazz.

BSO: 'DVOŘÁK EIGHT'

20 September

Wiltshire Music Centre, Ashley Road, BRADFORD-ON-AVON, BA15 1DZ. 7.30pm. £32 / £17. 01202 669925 / bsolive.com. See 18 September.

INDIA ELECTRIC CO.

20 September

Lighthouse, 21 Kingland Road, POOLE, BH15 1UG. 8pm. 01202 280000 / lighthousepoole.co.uk.

THE NIGHTJARS + PATRICK & JEMIMA MORAN

21 September

Ilminster Arts Centre, The Meeting House, East Street, ILMINSTER, TA19 0AN. 7.30pm. £16. 01460 54973. Folk.

THE JOHN MARTYN PROJECT

21 September

Sandy Hill Arts, Sandy Hill Lane, CORFE CASTLE, BH20 5JF. 7.30pm. £20 / £15. 07929 771219 / sandyhillarts.co.uk. "Six artists (Blythe Pepino, Kit Hawes, Pete Josef, Sam Brookes, John Blakeley and Jon Short) come together to celebrate the music of John Martyn."

THE BARNSTAPLE MALE VOICE CHOIR

21 September

All Saints Church, MARTOCK, TA12 6JN. 7.30pm. £12 / £10. 07547 213992 / martockonline.co.uk.

'IMPROVISED MUSIC AND ANIMATION'

22 September

The Fortune Inn, Kingston Road, TAUNTON, TA2 7SE. 8pm. 07551 323636. "Visitors will be surrounded by sound and moving colour. Musicians will respond to abstract animations projected onto walls and shown on television screens."



Elvis Costello & Steve Nieve

"The collaboration of Elvis Costello and Steve Nieve has spanned over 45 years, with appearances together on 25 albums, from *Watching The Detectives* to *The Boy Named If*. Here they'll play selections from a songbook that's 50 years long and twice as deep."

18 September: Lighthouse, 21 Kingland Road, POOLE, BH15 1UG. 8pm. 01202 280000 / lighthousepoole.co.uk.

BSO: 'CAKE CONCERT'

23 September

Immanuel Church, Southbourne Road, BOURNEMOUTH, BH6 3QJ. 11am. £6. 07713 479912 / bsolive.com. "Dementia-friendly event featuring well-known classics."

NAKED BYRD

26 September

Lighthouse, 21 Kingland Road, POOLE, BH15 1UG. 7.30pm. 01202 280000 / lighthousepoole.co.uk. "Incredible choral music."

ACOSTA DANZA YUNIOR

26 and 27 September

Lighthouse, 21 Kingland Road, POOLE, BH15 1UG. 7pm. 01202 280000 / lighthousepoole.co.uk. "Cuban folk and dance."

TOM MCCRAE

27 September

Lighthouse, 21 Kingland Road, POOLE, BH15 1UG. 7.30pm. 01202 280000. See 13 September.

BLACKDOWN ACAPELLA AND SOMER SINGERS

27 September

Ilminster Arts Centre, The Meeting House, East Street, ILMINSTER, TA19 0AN. 7.30pm. £12. 01460 54973.

FRASER ANDERSON TRIO

27 September

The Pound Arts Centre, CORSHAM, SN13 9HX. 8pm. £14. 01249 701628 / poundarts.org.uk. Folk.

'MUSIC INSPIRED BY WATER'

28 September

The Malthouse Gallery The Town Mill, Mill Lane, LYME REGIS, DT7 3PU. 6pm. 07847 280806. "Jenny Bliss on viola de gamba and Ron Phelan on double bass will be spontaneously composing a completely new piece of music."

WEYMOUTH CONCERT BRASS: 'LAST NIGHT OF THE PROMS'

28 September

Methodist Church, WEYMOUTH, DT4 7TH. 7.30pm. £12 / £10. 01305 812637.

JIM CAUSLEY & MIRANDA SYKES

28 September

The Pound Arts Centre, CORSHAM, SN13 9HX. 7.30pm. £16.50. 01249 701628 / poundarts.org.uk. Folk.



BLUE

29 September

Lighthouse, 21 Kingland Road, POOLE, BH15 1UG. 7.30pm. 01202 280000 / lighthousepoole.co.uk.

CLOCKTOWER RECORDS

Unit 10a
St Michael's Estate
St Michael's Lane
Bridport
Dorset DT6 3RR
+
35a South Street
Bridport
Dorset DT6 3NY
Monday to Saturday
10am - 4.30pm
clocktowermusic.co.uk



Suppliers of both new and pre-loved vinyl, official t-shirts, merchandise and memorabilia

THE OLD SHAMBLES, SOUTH STREET, SHERBORNE, DT9 3LU

07730 356719 / thebeatandtrack@icloud.com

thebeatandtrack.co.uk

Tincleton Gallery

music and contemporary fine art in Dorset



Francesca Maria Villani

Friday 18 and Saturday 19 October 2024

Scarlatti – Schumann – de Gambarini – Brahms – Berg

The Old School House, Tincleton, near Dorchester, DT2 8QR

doors open 19:30 • tickets £15

01305 848909 • tinctongallery.com



bournemouth
symphony orchestra

Concert Season
2024/25

A season of musical masterpieces



Are you looking for a special night out?

Experience the full glory of a live symphony orchestra

Lighthouse, Poole • Bristol Beacon

Great Hall, Exeter • Weymouth Pavilion

Taunton Brewhouse • **and more**

plus chamber performances in many local venues

Find out more and book your tickets at

bsolive.com 01202 669925



SIMON CHESTERFIELD



THE LYRIC THEATRE

FRIDAY 11 OCTOBER

9 Barrack Street, Bridport, DT6 3LX

7.30pm

Tickets: bridportandwestbay.co.uk

DEBUT ALBUM

FRIDAY 11 OCTOBER

Limited edition on ten inch vinyl (300 only)
or download on all the usual digital
platforms

Légère
RECORDINGS



Photograph by Barry Cawston

KATHRYN TICKELL AND THE DARKENING

1 October

Lighthouse, 21 Kingland Road, POOLE, BH15 1UG. 7.30pm. 01202 280000 / lighthousepoole.co.uk.

BSO: 'THE PLANETS'

2 October

Lighthouse, 21 Kingland Road, POOLE, BH15 1UG. 7.30pm. £52 / £17. 01202 280000. "Experience the epic sweep of Holst's most popular work, followed by the revolutionary scale of intensity of Vaughan Williams In the Fen Country and Beethoven's Piano Concerto No. 3."

DIANA COOPER

2 October

Lighthouse, 21 Kingland Road, POOLE, BH15 1UG. 1.05pm. 01202 280000. Piano recital.

BSO: 'THE PLANETS'

3 October

Bristol Beacon, Trenchard Street, BRISTOL, BS1 5AR. 7.30pm. £57 / £10. 01172 034040 / bsolive.com. See 2 October.

MARK LOCKHEART'S DREAMERS

3 October

SoundCellar, The Grasshopper, 139 - 141 Bournemouth Road, POOLE, BH14 9HT. 8pm. £17.50 / £10. soundcellar.org.

ELIZA MCCARTHY AND MARLO DE LARA: 'EAVESDROPPING'

4 October

Arnolfini, 16 Narrow Quay, BRISTOL, BS1 4QA. 7.30pm. £15 / £8. 0117 917 2300 / arnolfini.org.uk. "An evening of experimental music-making with pianist Eliza McCarthy and sound artist Marlo De Lara, each of whom will play a solo set of new work."

ART THEMEN & LAURA JURD QUARTET

4 October

Lighthouse, 21 Kingland Road, POOLE, BH15 1UG. 8pm. 01202 280000 / lighthousepoole.co.uk. Jazz.

JOHNNY HATES JAZZ

5 October

Lighthouse, 21 Kingland Road, POOLE, BH15 1UG. 7.30pm. 01202 280000 / lighthousepoole.co.uk.



BSO: Elgar's Enigma

"A work dazzling in its ingenuity, technical skill and range of expression, Enigma Variations was an immediate popular success and catapulted Elgar into national and international fame."

26 September: Great Hall, University of Exeter, Stocker Road, EXETER, EX4 4PY. 7.30pm. £41 / £16. 01202 669925 / bsolive.com.

BSO: 'FIREBIRD'

9 October

Lighthouse, 21 Kingland Road, POOLE, BH15 1UG. 7.30pm. £52 / £17. 01202 669925 / bsolive.com.

THE AMY MAYES BAND

11 October

The Corn Exchange, High East Street, DORCHESTER, DT1 1HF. 7pm. £15 / £13. 01305 266926 / dorchesterarts.org.uk. "An eclectic mix of beautifully haunting original power ballads and up-tempo swinging blues."

DRAGONSFLY

11 October

ACE Arts, Market Place, SOMERTON, TA11 7NB. 7pm. £14. 01458 273008 / acearts.co.uk. "Rich and varied folk tunes and songs."

LED ZEPPELISH

11 October

Ilminster Arts Centre, The Meeting House, East Street, ILMINSTER, TA19 0AN. 7.30pm. £22 / £20. 01460 54973. "Led Zeppelin covers."



VRi

11 October

Village Hall, CORFE CASTLE, BH20 5EE. 7.30pm. £12.50 / £6 / £31 07590 352219 / artsreach.co.uk. "Three-part harmonies, stunning fiddle, and the unusual addition of cello, forge VRi's totally unique sound. Since forming in 2016, the trio have been pumping out their native foot-stomping dance tunes whilst maintaining the poise and elegance of a string ensemble."

VRi

12 October

Village Hall, LITTON CHENEY, DT2 9AU. 7.30pm. £12.50 / £6. 07799 612941. See 11 October.

VRi

13 October

Village Hall, SANDFORD ORCAS, DT9 4RX. 7.30pm. £12.50 / £6. 01963 220208. See 11 October.

ROB LUFT QUARTET

13 October

SoundCellar, The Grasshopper, 139 - 141 Bournemouth Road, POOLE, BH14 9HT. 8pm. £17.50 / £10. soundcellar.org.

BSO: 'TCHAIKOVSKY SIX'

16 October

Lighthouse, 21 Kingland Road, POOLE, BH15 1UG. 7.30pm. £52 / £17. lighthousepoole.co.uk.



GOOD HABITS

17 October

St Leonard's Church, PITCOMBE, BA10 0PE. 6.30pm. £15. 07969 461967 / takeart.org. "Action-packed narrative of folky goodness."

PETER OAKES AND SALLY FLANN

17 October

The Corn Exchange, High East Street, DORCHESTER, DT1 1HF. 11am. Free entry. 01305 266926. Piano and cello recital.

MIKE DENHAM SPEAKEASY

17 October

The Corn Exchange, High East Street, DORCHESTER, DT1 1HF. 7pm. £17 / £15. 01305 266926. Jazz.



The Pound

Joe Jukes: Summer People

Opening Night: Thursday 19 September, 6.30pm
19 September - 19 October

Negative Thinking: Shadow Work Tim Pearse: Aspect

Opening Night: Thursday 24 October, 6.30pm
24 October - 24 November

The Pound Arts Centre, Corsham, Wiltshire, SN13 9HX

(01249) 701628 | poundarts.org.uk | @poundarts



SPIKEDRIVERS

18 October

Ilminster Arts Centre, The Meeting House, East Street, ILMINSTER, TA19 0AN. 7.30pm. £22 / £20. 01460 54973 / themeeetinghouse.org.uk.

JAY PHELPS: 'A KIND OF BLUE'

18 October

Lighthouse, 21 Kingland Road, POOLE, BH15 1UG. 7.45pm. 01202 280000. Jazz.

GOOD HABITS

18 October

Village Hall, Higher Street, CURRY MALLET, TA3 6SY. 8pm. £12. 07788 817619 / takeart.org. See 17 October.

WISHBONE ASH

18 October

Corn Exchange, Market Place, DEVIZES, SN10 1HS. 7.30pm. £28.50. 01380 723333.

KATHRYN ROBERTS & SEAN LAKEMAN

18 October

The Pound Arts Centre, CORSHAM, SN13 9HX. 7.30pm. £18. 01249 701628 / poundarts.org.uk. "This multi award-winning musical couple continue to exude timeless class."

COUNTER'S CREEK

18 October

Village Hall, SYDLING ST NICHOLAS, DT2 9NX. 7.30pm. £12.50 / £6. 07455 165746 / artsreach.co.uk. "Acoustic folk inspired by the folk music of the British Isles and beyond."



FRANCESCA MARIA VILLANI

18 and 19 October

Tincton Gallery, The Old School House, TINCLETON, near Dorchester, DT2 8QR. 7.30pm. £15. tinctongallery.com. Classical piano recital.

COUNTER'S CREEK

19 October

Village Hall, BRIANTSPUDDLE, DT2 7HT. 7.30pm. £13 / £7. 07788 100273 / artsreach.co.uk. See 18 October.



Luke Jackson Trio

"Blessed with one of those soulful, heaven-sent voices that soars with emotion or plunges into brooding intensity, Luke Jackson returns to Broadmayne as a trio."

18 October: Village Hall, Cowleaze Road, BROADMAYNE, Dorchester, DT2 8EW. 7.30pm. £15. 07443 659912 / lukepauljackson.com.

GOOD HABITS

19 October

Village Hall, EAST QUANTOXHEAD, TA5 1EJ. 8pm. £11 / £6. 07876 747578 / takeart.org. See 17 October.

WISHBONE ASH

19 October

Exeter Phoenix, Gandy Street, EXETER, EX3 3LS. 7.30pm. £24. 01392 667080. See 18 October.

THE VAN MORRISON ALUMNI BAND

20 October

Lighthouse, 21 Kingland Road, POOLE, BH15 1UG. 8pm. 01202 280000 / lighthousepoole.co.uk.

COUNTER'S CREEK

20 October

Portman Hall, SHILLINGSTONE, DT11 0SF. 7.30pm. £12.50 / £6. 01258 860319 / artsreach.co.uk.. See 18 October.



REG MEUROSS & SUNTOU SUSSO: 'STOLEN FROM GOD'

22 October

Village Hall, CERNE ABBAS, DT2 7GY. 7.30pm. artsreach.co.uk. "Reg Meuross tackles the history of England's involvement in the transatlantic slave trade, unearthing incredible tales and uncomfortable truths of a history which needs to be told. Joined by kora master Suntou Susso, these stories are brought to life in a stunning folk song cycle."

REG MEUROSS & SUNTOU SUSSO: 'STOLEN FROM GOD'

23 October

Village Hall, LANGTON MATRAVERS, BH19 3HA. 7.30pm. 01929 423834 / artsreach.co.uk. See 22 October.

BSO: 'HOLST 150'

23 October

Lighthouse, 21 Kingland Road, POOLE, BH15 1UG. 7.30pm. £52 / £17. 01202 669925 / bsolive.com.

MI FLAMENCO: 'IGNITE'

24 October

The Corn Exchange, High East Street, DORCHESTER, DT1 1HF. 7pm. £20 / £18. dorchesterarts.org.uk.

MARTHA TILSTON

24 October

The Pound Arts Centre, CORSHAM, SN13 9HX. 7.30pm. £20. poundarts.org.uk. "Expect sparkling melodies, thought-provoking lyrics, filmic movements and earthy basslines."

AFRO CELT SOUNDSYSTEM

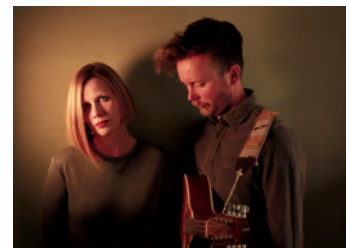
25 October

Lighthouse, 21 Kingland Road, POOLE, BH15 1UG. 7.30pm. 01202 280000 / lighthousepoole.co.uk.

VOCES AMICI

25 October

Ilminster Arts Centre, The Meeting House, East Street, ILMINSTER, TA19 0AN. 7.30pm. £15. 01460 54973.



MEGSON

26 October

The Pound Arts Centre, CORSHAM, SN13 9HX. 7.30pm. £18. 01249 701628. "Arresting songwriting, exquisite musicianship and northern humour."

MARTIN SIMPSON

30 October

The Pound Arts Centre, CORSHAM, SN13 9HX. 7.30pm. £20. 01249 701628 / poundarts.org.uk.



EASTVILLEPROJECT.ORG.UK

eps

INDEPENDENT RECORD STORE

VINYL / CDS / CASSETTES / BAND MERCHANDISE /
VINTAGE CLOTHES / BOOKS / BAND EQUIPMENT /
IN-STORE GIGS / DJ SESSIONS / REHEARSAL SPACE

UNIT 29, VICARAGE WALK, THE QUEDAM, YEOVIL

 @epsyeovil 



We are a funky, independent record shop stocking a great range of new and preloved vinyl, specialising in Reggae, Hip Hop, Soul, Funk, World, Electronic, Jazz, Blues, Alternative, Indie, Rock, Pop and more

8a Pope Street, Brewery Square, Dorchester, DT1 1GW
Tuesday to Saturday from 10am

Performance

September and October 2024

'THE MERRY WIVES OF WINDSOR'

6 September

Maumbury Rings, DORCHESTER, DT1 1QZ. 5.30pm. £16 / £14. dorchesterarts.org.uk. "Expect silly slapstick, abundant anachronisms and memorable music nestled amongst Shakespeare's poignant poetry as the critically acclaimed *Pantaloons* put their own innovative and interactive spin on this classic comedy."

'BIRDSONG'

6 - 14 September

Salisbury Playhouse, Malthouse Lane, SALISBURY, SP2 7RA. Monday - Saturday 7.30pm (Thursday and Saturday matinees 2.15pm). £12. wiltshirecreative.co.uk. "A mesmerising story of love and courage, set both before and during the Great War. Once seen never forgotten."

DANNY BEARD

7 September

Lighthouse, 21 Kingland Road, POOLE, BH15 1UG. 7.45pm. 01202 280000 / lighthousepoole.co.uk. "Killer vocals, snappy comedy, put downs and pick me ups."



PAM AYRES

11 September

Lighthouse, 21 Kingland Road, POOLE, BH15 1UG. 7.45pm. 01202 280000 / lighthousepoole.co.uk.

KIRI PRITCHARD MCLEAN:

'PEACOCK'

13 September

The Corn Exchange, High East Street, DORCHESTER, DT1 1HF. 7pm. £17 / £15. 01305 266926 / dorchesterarts.org.uk.



Worldbeaters

"Activate Performing Arts is delighted to announce the return of the highly anticipated We Are Weymouth's *Dusk Til Dark* event, now in its fourth year. This exciting, free-to-attend performing arts event is perfect for the whole family and will be held over two days, transforming Weymouth into a vibrant hub of music, light, and drumbeats! Welcoming back the renowned Worldbeaters, this year's *Dusk Til Dark* will feature the enthralling *Spark!* show and the highly anticipated world premiere of *Fireflies*. For over a decade Worldbeaters have toured *Spark!*, captivating audiences with choreography, dynamic drumming, and dazzling light displays. This year's *Dusk Til Dark* event will take place in various locations across the town with drum performances on the cliffs of Bowleaze, to weaving through the town in a procession of beats and light."

'SPARK!'

27 September: Various locations in WEYMOUTH. Bowleaze Coveaway 7.30pm, Hope Square 9pm, New Bond Street 10pm. 01305 260954 / activateperformingarts.org.uk.

'FIREFLIES'

28 September: The Esplanade, WEYMOUTH. 8pm. 01305 260954 / activateperformingarts.org.uk.

RAYMOND & MR TIMPKINS + NJAMBI MCGRATH

14 September

Lighthouse, 21 Kingland Road, POOLE, BH15 1UG. 8pm. 01202 280000. *Comedy*.

ED BYRNE: 'TRAGEDY PLUS TIME'

14 September

Westlands Ballroom, Westlands Close, YEOVIL, BA20 2DD. 7.30pm. £33. 01935 422884 / westlandsyevovil.co.uk. *Comedy*.

'PETER PAN'

18 and 19 September

Lighthouse, 21 Kingland Road, POOLE, BH15 1UG. 7pm. 01202 280000 / lighthousepoole.co.uk.

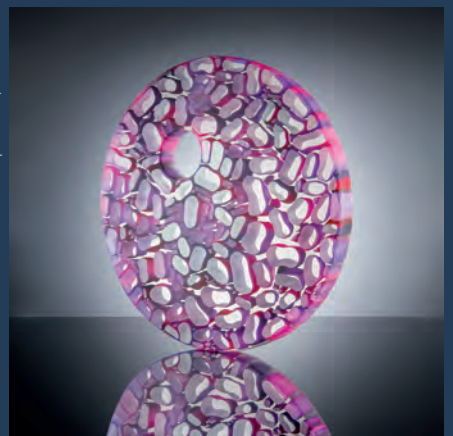
SHERBORNE TIMES

A MONTHLY CELEBRATION OF PEOPLE, PLACE AND PURVEYOR

OUT NOW
AND ONLINE

sherbornetimes.co.uk

Artist at Work No. 69 Charlie Macpherson, *Ribbon*



Performance

'WITH COURAGE'

19 September

Lighthouse, 21 Kingland Road, POOLE, BH15 1UG. 7.45pm. 01202 280000 / lighthousepoole.co.uk. "New musical by Jon Hare about the lives and sacrifices of lifeboat communities."

'DEATH(S) AT SEA'

19 September

The Corn Exchange, High East Street, DORCHESTER, DT1 1HF. 7pm. £16 / £14. 01305 266926 / dorchesterarts.org.uk.

ROBIN MORGAN: 'THE SPARK'

20 September

The Pound Arts Centre, CORSHAM, SN13 9HX. 7.30pm. £15. 01249 701628 / poundarts.org.uk. Comedy.

DOM JOLY: 'THE CONSPIRACY TOUR'

20 September

Lighthouse, 21 Kingland Road, POOLE, BH15 1UG. 7.30pm. 01202 280000 / lighthousepoole.co.uk.

'INDESTRUCTIBLE'

21 September

Lighthouse, 21 Kingland Road, POOLE, BH15 1UG. 8pm. 01202 280000 / lighthousepoole.co.uk.



'KATHAKALI!'

21 September

Community Hall, CARYFORD, BA7 7JJ. 7pm. £15. 07736 371963 / takeart.org. "A highly visual, emotional, and powerful drama that captures human nature through theatre."

'SIX MEN OF DORSET'

21 and 22 September

The Corn Exchange, High East Street, DORCHESTER, DT1 1HF. Saturday 7.30pm, Sunday 2.30 and 7.30pm. £16 / £10. 01305 266926 / dorchesterarts.org.uk.



Mariposa

"A Cuban rent boy and a troubled sailor fall ominously in love in this Queer tragedy inspired by Puccini's *Madama Butterfly*."

15 October: Lighthouse, 21 Kingland Road, POOLE, BH15 1UG. 7.45pm. 01202 280000 / lighthousepoole.co.uk.

'LITTLE RED RIDING COULD'

21 and 22 September

The Egg, 36 Monmouth Street, BATH, BA1 2AN. 11.30am and 3pm. £10. 01225 823409 / theatreroyal.org.uk. "A playful, mischievous retelling of the original fairy tale from Bristol-based Roustabout Theatre, featuring original songs, signature silliness and a cast of talented actor-musicians."

'ANDALUCIA'

23 September

Lighthouse, 21 Kingland Road, POOLE, BH15 1UG. 7.30pm. 01202 280000 / lighthousepoole.co.uk.



LILA DANCE: 'FAULT LINES'

25 September

The Pound Arts Centre, CORSHAM, SN13 9HX. 7.30pm. £14. 01249 701628 / poundarts.org.uk.

'KATHAKALI!'

27 September

Parish Church, NORTH CURRY, TA3 6LJ. 6.30pm. £15 / £5. 01823 491231 / takeart.org. See 21 September.

RUSSELL KANE

27 September

Lighthouse, 21 Kingland Road, POOLE, BH15 1UG. 8pm. 01202 280000 / lighthousepoole.co.uk.

'THE BIG BINGO SHOW'

28 September

Bridport Arts Centre, 9 South Street, BRIDPORT, DT6 3NR. 01308 424204 / bridport-arts.com. 7.30pm. £16 / £14.

"A riotous, gloriously funny three act bingo show replete with bad sing-alongs, spontaneous dance routines and impromptu rants."

'LITTLE RED RIDING COULD'

28 September

Lighthouse, 21 Kingland Road, POOLE, BH15 1UG. 1pm. 01202 280000 / lighthousepoole.co.uk. See 21 and 22 September.

CARL HUTCHINSON

28 September

Lighthouse, 21 Kingland Road, POOLE, BH15 1UG. 7.30pm. 01202 280000 / lighthousepoole.co.uk. Comedy.

'LITTLE RED RIDING COULD'

28 September

Lighthouse, 21 Kingland Road, POOLE, BH15 1UG. 1pm. £10.49 / £8.50. 01202 280000 / lighthousepoole.co.uk. See 21 and 22 September.

'KATHAKALI!'

29 September

Village Hall, CROSCOMBE, BA5 3RA. 7pm. £14 / £9 / £5. 07771 814270 / takeart.org. See 21 September.

'STONES IN HIS POCKETS'

1 - 19 October

Salisbury Playhouse, Malthouse Lane, SALISBURY, SP2 7RA. Monday - Saturday 7.30pm (Thursday and Saturday matinees 2.15pm). £12. 01722 320333 / wiltshirecreative.co.uk. "Set in a rural Ireland, a small village is turned upside down by the arrival of a Hollywood studio to film the latest historical blockbuster."

Artsreach

NEW OCTOBER - DECEMBER PROGRAMME OUT NOW!

Visit our website for full details of all performances touring across Dorset!



www.artsreach.co.uk



VRi

11-13 October

Corfe Castle
Lytton Cheney & Sandford Orcas



Living Spit

15-16 October

Portland & Lytchett Matravers



Counter's Creek

18-20 October

Sydling St Nicholas
Briantspuddle & Shillingstone



Reg Meuross & Suntou Susso

22-23 October

Cerne Abbas & Langton Matravers



Nikki & JD

9-10 November

Halstock & Child Okeford

'DESIGN FOR LIVING'

2 - 5 October

Rondo Theatre, Larkhall, BATH, BA1 6RT. 7pm. £14 / £12. 0333 666 3366 / rondotheatre.co.uk / bathdrama.com. "Classic Noel Coward comedy as, in 1920s Paris, London and New York, Gilda, Leo and Otto struggle to make sense of their three-way relationship as material success interferes with their artistic ideals."

CRAIG MITCHELL: 'JUKEBOX MASHUP'

3 October

The Pound Arts Centre, CORSHAM, SN13 9HX. 7.30pm. £14. 01249 701628 / poundarts.org.uk. Comedy.

PANTA REI: 'PETALS AND TALES'

4 October

Village Hall, HATCH BEAUCHAMP, TA3 6SG. £11 / £5. 01823 481909 / takeart.org. "Join Norwegian dance company Panta Rei for a dazzling children's show featuring a beautiful set, graceful movement and a million petals."

RHOD GILBERT

4 October

Lighthouse, 21 Kingland Road, POOLE, BH15 1UG. 7.30pm. 01202 280000 / lighthousepoole.co.uk. "Hilariously dark, passionate and way too personal, this is classic Gilbert, squeezing every last drop out of life's latest curveballs... with a little help from an old adversary."

PANTA REI: 'PETALS AND TALES'

5 October

Memorial Hall, STURMINSTER MARSHALL, BH21 4BQ. 2.00pm £8 / £6. 01305 269512 / artsreach.co.uk. See 4 October.

SANDI TOKSVIG

5 October

Lighthouse, 21 Kingland Road, POOLE, BH15 1UG. 7.30pm. 01202 280000 / lighthousepoole.co.uk.

SK SHLOMO: 'BREATHE'

5 October

Lighthouse, 21 Kingland Road, POOLE, BH15 1UG. 8pm. 01202 280000 / lighthousepoole.co.uk. "A rollercoaster love letter to the lifesaving power of beats, bass and breathing."



Black is the Colour of my Voice

"Inspired by the life of Nina Simone and featuring many of her most iconic songs performed live, Apphia Campbell's acclaimed play follows a successful jazz singer and civil rights activist as she seeks redemption after the untimely death of her father. She reflects on the journey that took her from a young piano prodigy destined for a life in the service of the church, to a renowned jazz vocalist at the forefront of the Civil Rights Movement."

17 September: Lighthouse, 21 Kingland Road, POOLE, BH15 1UG. 7.45pm. 01202 280000 / lighthousepoole.co.uk.

'THE JUNGLE BOOK'

5 October

The Corn Exchange, High East Street, DORCHESTER, DT1 1HF. 2pm. £12 / £10. dorchesterarts.org.uk.

RICHARD DURRANT: 'THE NO. 26'

5 October

The Pound Arts Centre, CORSHAM, SN13 9HX. 7.30pm. £18. 01249 701628 / poundarts.org.uk.

'LITTLE RED RIDING COULD'

5 and 6 October

The Wardrobe Theatre, Old Market, BRISTOL, BS2 0DF. 11am and 2pm. £10. thewardrobetheatre.com. See 21 and 22 September.

'HANCOCK'S HALF HOUR'

7 October

Bridport Arts Centre, 9 South Street, BRIDPORT, DT6 3NR. 7.30pm. £20 / £18. bridport-arts.com.

'1984'

7 - 12 October

Lighthouse, 21 Kingland Road, POOLE, BH15 1UG. Monday, Thursday, Friday and Saturday 7.45pm, Tuesday and Wednesday 7pm (Thursday and Saturday matinees 2.30pm). 01202 280000.



'SHERLOCK HOLMES: THE LAST ACT'

10 October

The Corn Exchange, High East Street, DORCHESTER, DT1 1HF. 7pm. £15 / £13. dorchesterarts.org.uk.

'GARRETT MILLERICK NEEDS MORE SPACE'

11 October

The Pound Arts Centre, CORSHAM, SN13 9HX. 7.30pm. £15. 01249 701628 / poundarts.org.uk. Comedy.

'THE DUKE'

11 October

Lighthouse, 21 Kingland Road, POOLE, BH15 1UG. 8pm. 01202 280000 / lighthousepoole.co.uk. "Funny and poignant one-man show by Shôn Dale-Jones."

'THERE'S SOMETHING ABOUT TYPHOID MARY'

15 October

Royal Manor Theatre, PORTLAND, DT5 1LT. 7.30pm. £12.50 / £6 03336 663366 / artsreach.co.uk. "A contagiously entertaining journey through the dark and sinister world of a killer cook, told with wit, song and silliness."

'THERE'S SOMETHING ABOUT TYPHOID MARY'

16 October

Village Hall, LYCHETT MATRAVERS, BH16 6DD. 7.30pm. £12.50 / £6. 07795 467666. See 15 October.

Shaftesbury Arts Centre



Theatre
**Austen's Women:
Lady Susan**
5 September, 7.30pm



Music
Duo
Flamenco Fusion
21 September, 7.30pm



Live Recording
Miss Saigon (15)
23 September
7pm



Family Drama
The Midnight Mission
(7+)
26 October, 2pm



Film
Chinatown (15)
25 October
8pm

11 - 13 Bell Street, Shaftesbury, Dorset SP7 8AR 01747 854321 • shaftesburyartscentre.org.uk

Performance

COLIN HOULT: 'COLIN'

17 October

The Pound Arts Centre, CORSHAM, SN13 9HX. 7.30pm. £18. 01249 701628 / poundarts.org.uk.

'PARADISE LOST (LIES UNOPENED BESIDE ME)'

18 October

The Corn Exchange, High East Street, DORCHESTER, DT1 1HF. 7pm. £16 / £14. 01305 266926 / dorchesterarts.org.uk. *Dance.*

BEN ELTON: 'AUTHENTIC STUPIDITY'

19 October

Lighthouse, 21 Kingland Road, POOLE, BH15 1UG. 7.30pm. 01202 280000 / lighthousepoole.co.uk.

'THERE'S SOMETHING ABOUT TYPHOID MARY'

19 October

The Pound Arts Centre, CORSHAM, SN13 9HX. 7.30pm. £14. 01249 701628 / poundarts.org.uk. See 15 October.

PIERRE NOVELLIE: 'WHY ARE YOU LAUGHING?'

19 October

Lighthouse, 21 Kingland Road, POOLE, BH15 1UG. 8pm. lighthousepoole.co.uk. *Comedy.*

'LITTLE RED RIDING COULD'

19 October

Taunton Brewhouse, Coal Orchard, TAUNTON, TA1 1JL. 11am and 2pm. £15 / £13. 01823 283 244 / tauntonbrewhouse.co.uk. See 21 and 22 September.

THE NOISE NEXT DOOR: 'FREEWHEELING'

19 October

The Corn Exchange, High East Street, DORCHESTER, DT1 1HF. 7pm. £16 / £14 01305 266926 / dorchesterarts.org.uk. *Comedy.*

'DECOMMISSIONED'

22 October

The Corn Exchange, High East Street, DORCHESTER, DT1 1HF. 7pm. £14 / £12. 01305 266926 / dorchesterarts.org.uk. "A heart-warming, comical, and intimate play about how we're meant to care for children, fall in love and stay sane while tackling the climate catastrophe."



The Small World of Clive Crudwick

"The 75-minute show alternates between filmed monologues and live, original songs, delivered by Clive with increasing conviction and ambition, solo at first, but progressing to a full band and string players."

23 and 24 October: Bridport Arts Centre, 9 South Street, BRIDPORT, DT6 3NR. 7.30pm. £14 / £12. 01308 424204 / bridport-arts.com.

'THE PRINCE AND THE KNAVE'

22 and 23 October

The Mission Theatre, BATH, BA1 1UF. 7.30pm. £14. 07780 938107 / shakespearelive.com.

'PLAY ON!'

22 October - 2 November

Salisbury Playhouse, Malthouse Lane, SALISBURY, SP2 7RA. Monday - Saturday 7.30pm (Thursday and Saturday matinees 2.15pm). £12. wiltshirecreative.co.uk. "Get swept up in a syncopated symphony of melodies, mistaken identities and romance in this musical spectacular."

'THE PRINCE AND THE KNAVE'

24 October

The Town Hall, CORSHAM, SN13 0EZ. 7.30pm. £14. 07780 938107 / shakespearelive.com. See 22 and 23 October.



MUGENKYO TAIKO DRUMMERS

24 October

Lighthouse, 21 Kingland Road, POOLE, BH15 1UG. 7.45pm. 01202 280000 / lighthousepoole.co.uk. "Big beats, visual treats and vital energy."

'THE GREETERS GUILD'

24 October

Lighthouse, 21 Kingland Road, POOLE, BH15 1UG. 8pm. lighthousepoole.co.uk.

LUKE WRIGHT: 'JOY'

25 October

Bridport Arts Centre, 9 South Street, BRIDPORT, DT6 3NR. 7.30pm. £15 / £13. 01308 424204 / bridport-arts.com. "Luke Wright returns with a new set poems that get to grips with the idea of joy. Is it possible, as a 42 year old to feel pure unbridled happiness, and what does it look like?"

'THE PRINCE AND THE KNAVE'

25 October

The Merlin Theatre, FROME, BA11 2HG. 7.30pm. £14. 07780 938107. See 22 and 23 October.

RODREGUEZ KING-DORSET: 'THE WINDRUSH SECRET'

25 October

The Pound Arts Centre, CORSHAM, SN13 9HX. 7.30pm. £14. 01249 701628 / poundarts.org.uk.



'PLASTIC PARADISO'

26 October

Bridport Arts Centre, 9 South Street, BRIDPORT, DT6 3NR. 3pm. £12 / £8. 01308 424204 / bridport-arts.com.

'THE PRINCE AND THE KNAVE'

26 October

The Cause, CHIPPENHAM, SN15 3DD. 7.30pm. £14. 07780 938107 / shakespearelive.com. See 22 and 23 October.

'THE WATCH HOUSE'

26 October

Lighthouse, 21 Kingland Road, POOLE, BH15 1UG. 8pm. lighthousepoole.co.uk. "Funny, thrilling adaptation of Robert Westall's classic ghost story."

'THE WATCH HOUSE'

27 October

The Corn Exchange, High East Street, DORCHESTER, DT1 1HF. 7pm. £15 / £13. dorchesterarts.org.uk. See 26 October



PERFECT POSTERS



AMAZING GICLÉE PRINTS

SCANNING • PHOTOGRAPHY • CALENDARS • INVITATIONS • BOOKMARKS • BROCHURES • FLYERS • STICKERS
BANNERS • FOAMEX SIGNS • LETTERHEADS • BUSINESS CARDS • FOLDERS • DESKPADS • BESPOKE ITEMS



POSTCARDS AND GREETING CARDS



FLAYMOUSE MEDIA

01935 479 453

WWW.FLAYMOUSE.COM

8 BUCKLAND ROAD, YEovil, SOMERSET BA21 5EA

activate
Sparking possibility

FREE
TO ATTEND



Worldbeaters

Perform across Weymouth
from Dusk Til Dark
27-28 September



Friday 27th **Spark!** (three performances)
Saturday 28th **Fireflies** (world premiere)



Presented by: **WE ARE WEYMOUTH**
Produced by: **activate** performing arts

Supported by:  Dorset Council  Dorset Community Foundation  WEYMOUTH TOWN COUNCIL  Damory

ARTCETERA

EST . 1970

Picture Framing & Artists Materials

01202 423408 artcetera853@gmail.com 853 Christchurch Road BH7 6AR

lighthouse

Arts & Entertainment | Poole



TUE 1 OCT

Kathryn Tickell & The Darkening

A Northumbrian twilight-inspired band that blends local and global influences with themes of freedom, nature, and history, featuring diverse instruments and powerful performances.

Theatre



SAT 5 OCT

Sandi Toksvig

Comedian Sandi returns to Poole with stories, truths, book readings, and a Q&A, celebrating her new novel Friends of Dorothy. Each ticket includes a hardback copy (RRP £22.00).

Concert Hall



THU 10 OCT

Kathakali

A renowned Kerala troupe brings Kathakali, the classical dance drama to the UK this autumn, featuring storytelling, dance, vibrant costumes, and intricate make-up.

The Sherling Studio



TUE 5 - SAT 9 NOV

Frankenstein

Inspired by Mary Shelley's classic, this new thriller by Séan Aydo 1943 features two women hiding in wartime Europe, one with a chilling tale of creating a monster.

Theatre



MON 18 - SAT 23 NOV

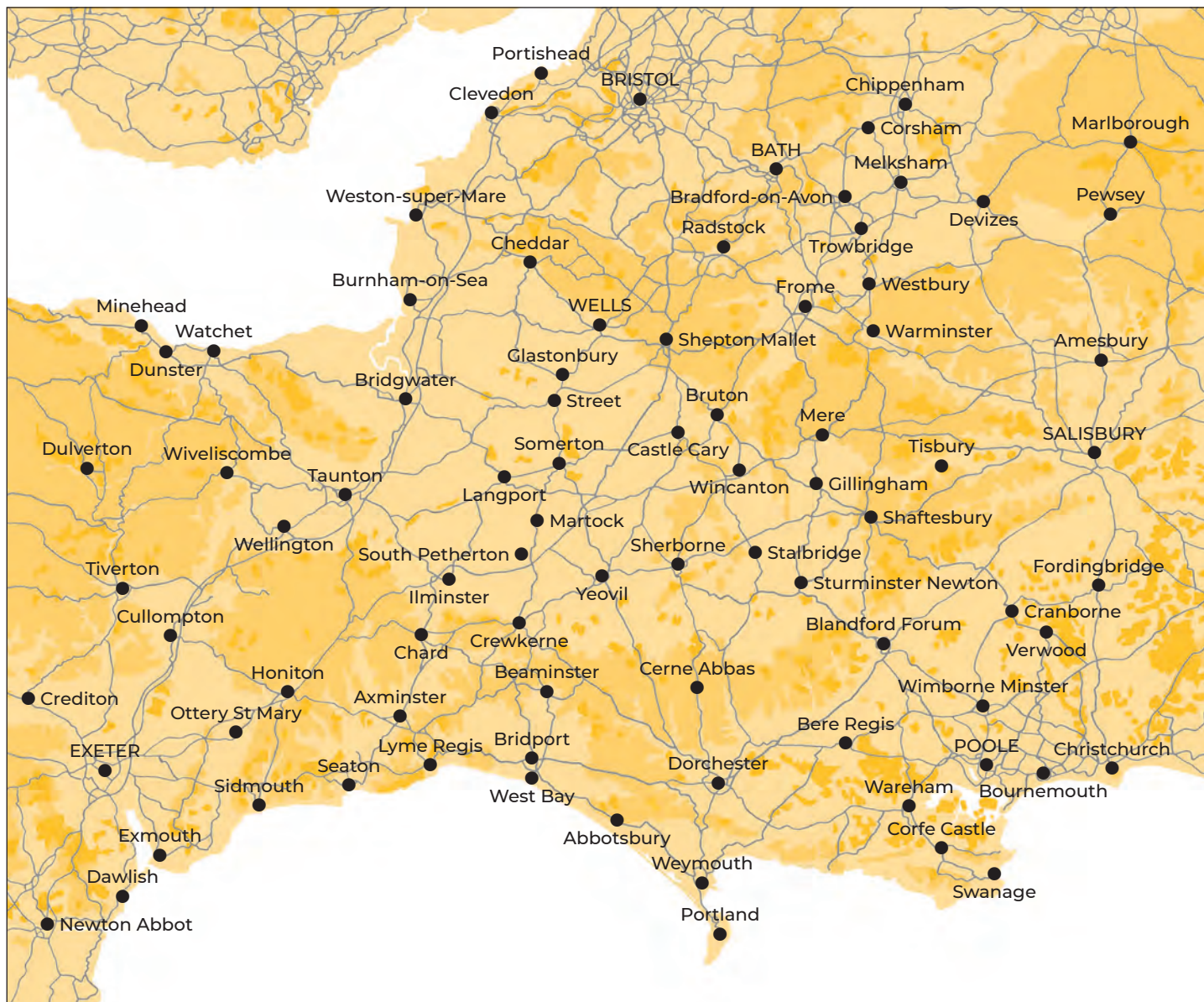
Pride & Prejudice* (*sort of)

Fresh from its West End win, this award-winning comedy offers a pop-infused retelling of Austen's classic love story, with high-stakes romance and party-time fun.

Theatre

! Different every day

WESSEX



Follow **EVOLVER** MAGAZINE on Instagram

evolvermagazine



EVOLVER MAGAZINE

THE WESSEX ARTS AND CULTURE GUIDE

Editor SIMON BARBER

Assisted by SUZY RUSHBROOK

News Editor SUZY RUSHBROOK

suzy@evolver.org.uk

Evolver Writers

FIONA ROBINSON / fionarobinson.com

PAUL MASKELL

Graphic Design SIMON BARBER

Front Cover

'HOPE' by LEO DAVEY

Painting

DEADLINE FOR EVOLVER MAGAZINE 140

November and December 2024

MONDAY 7 OCTOBER



EVOLVER MEDIA

8 BUCKLAND ROAD, PEN MILL TRADING ESTATE,
YEOVIL, SOMERSET BA21 5EA

Email simon@evolver.org.uk

Telephone 01935 808441

Website evolver.org.uk

Hosted by AZTEC MEDIA

Instagram [evolvermagazine](#)

Published by EVOLVER MEDIA LIMITED

Pre-Press by FLAYDEMOUSE

01935 479453 / flaydemouse.com

Printed by BISHOPS PRINTERS

bishops.co.uk

Distributed by ACOUSTIC DISTRIBUTION
07397 853006 / acousticdistribution.co.uk

Outlets and Sponsors

EVOLVER MAGAZINE is available **FREE** at the following Wessex outlets:

ABBOTSBURY: Abbotsbury Studio, Dancel Gallery. AXMINSTER: Archway Bookshop, Heritage Centre, Unique Framecraft. BATH: Bath Artists' Studios, Beaux Arts, The Edge / ICIA, Holburne Museum of Art, Michael Tippett Centre, University of Bath, Victoria Art Gallery. BEAMINSTER: Art and Beyond, Little Toller Books, Yarn Barton Centre. BLANDFORD: Blandford Fashion Museum, Bryanston Arts Centre, Forum Café, Forum Framers. BOSCOMBE: Artcetera. BOURNEMOUTH: All Fired Up, Big Brother Music & Film, Pavilion Dance, Royal Bath Hotel, Russell-Cotes Museum & Art Gallery. BOWER HINTON: The Hollies Hotel. BRADFORD ON AVON: Wiltshire Music Centre. BRIDGWATER: Bridgwater Arts Centre, Engine Room. BRIDPORT: Art Unlimited, Bridport Arts Centre, Bridport Old Books, The Bull Hotel, Clocktower Records, Literary and Scientific Institute, Lyric Theatre, Millside Picture Framing. BRISTOL: Arnolfini, Bocabar, Bristol Beacon, Bristol Fine Art, Centrespace, Clifton Contemporary, Clifton Fine Art, Create Centre, Folk House, Jamaica Street Artists, Lime Tree Gallery, Museum & Art Gallery, New Cut Coffee, Old Vic, PRSC Gallery, RWA, Spike Island, St George's, Tobacco Factory, Trinity Centre, UWE, Watershed. BRUTON: At The Chapel, Bruton Museum. BUDLEIGH SALTERTON: Brook Gallery. BURNHAM ON SEA: Princess Theatre & Arts Centre, Seabreeze Gallery. CASTLE CARY: Bailey Hill Bookshop, David Simon Gallery. CHARD: Art Café, Barleymow's, Hornsbury Mill Hotel. CHARMINSTER: Flux Art Supplies. CHEDDAR: Cheddar Art School. CHEDDON FITZPAINE: Hestercombe Gallery. CHIPPENHAM: Chippenham Museum. CHRISTCHURCH: Hatch Gallery, Hayloft Gallery, Red House Museum. CLEVEDON: Studio 3 Gallery. CORFE CASTLE: Boilerhouse Gallery, Morton House Hotel, Village Stores. CORSHAM: Pound Arts. CREWKERNE: Art4All / ArtyCrafty. CROCKERTON: Bull Mill Arts. CROWCOMBE: Halsway Manor. CULLOMPTON: Cullompton Community College. DEVIZES: Wiltshire Museum. DORCHESTER: Corn Exchange, Dorset Museum, Duke's, Frank Herring & Sons, Gallery on The Square, Shire Hall, The Little Keep, Vinyl Van. EAST LAMBROOK: East Lambrook Manor Gardens. EXETER: Academy of Music, Barnfield Theatre, The Cavern, Corn Exchange, Exeter School of Art, Glorious Art Cafe, Phoenix Arts Centre, Royal Albert Memorial Museum, Southgate Gallery. FROME: Bat Print Studio, Black Swan Arts, Cheese and Grain, Merlin Theatre, Raves From The Grave, Rook Lane Arts, Rise Centre, Whittox Gallery. GILLINGHAM: The Idea Works, Slade Centre.

GLASTONBURY: Abbey Muse Gallery, Facets Of Avalon, Glastonbury Galleries, Heart Of The Tribe Gallery, Red Brick Building, Rural Life Museum. HESTERCOMBE: Hestercombe Gallery. HONITON: The Beehive, Boston Tea Party, School Of Art And Wellbeing, Thelma Hulbert Gallery. ILMINSTER: Ilminster Arts Centre, The Millhouse. KEYNSHAM: Chocolate Quarter. LANGPORT: 4 Every Cloud, Art Tea Zen, Great Bow Wharf, Shakspeare Glass. LYME REGIS: Coombe Street Gallery, Fine Art Framing, Lyme Regis Museum, Marine Theatre, Studio 19. LYCHETT MINSTER: Barn Cafe, Courtyard Craft Centre. MARTOCK: Martock Gallery Yandles Cafe. MINEHEAD: Courtyard Framing, Leo Davey Gallery, Regal Theatre. MORCOMBELAKE: Artwave West. MUCHELNEY: John Leach Gallery. NEWTOWN: R C Arts. NORTH CURRY: Community Café. OTTERTON: Otterton Mill. PENN HILL: Josephine Wall Shop. PEWSEY: McNeill Gallery. POOLE: Arts University Bournemouth, Boiler Room Records, Guildhall Gallery, Lighthouse, Gallery Upstairs, Originals, Poole Museum, Poole Violins, Towngate Gallery And Framing. PORLOCK: Churchgate Gallery, Melody Art. PORTLAND: B-Side Outpost, White Stones. SALISBURY: City Hall, Fisherton Mill, Salisbury Arts Centre, Salisbury Museum, Salisbury Playhouse, Studio 53, Vanner Gallery, Wiltshire Gallery, Young Gallery. SEATON: Arts Café. SEAVINGTON: Village Shop. SHAFESBURY: Down The Steps, The Cygnet, Grosvenor Hotel, Pictureframes, Shaftesbury Arts Centre. SHEPTON MALLET: One Craft Gallery. SHERBORNE: Caffé Nero, Old Barn Framing Gallery, The Beat & Track, The Sherborne, Winstone's. SIDMOUTH: East Devon Art Academy, Flo and Us, Kennaway House, Winstone's. SOMERTON: ACE Arts, Gifted Company & Gallery Coffee Shop. SOUTH PETHERTON: David Hall. STALBRIDGE: Dike & Sons, Guggleton Farm. STOBOROUGH: Furzebrook Studios. STOKE ST GREGORY: Willow & Wetlands Centre. STOURHEAD: First View Gallery. STREET: Millfield School Atkinson Gallery, Strode Theatre. STURMINSTER NEWTON: The Exchange, Poet's Corner, Wessex Photographic. SWANAGE: Durlston Castle, Hollinghead Studio Gallery, Mowlem Theatre, Mulberry Bush Gallery, Purbeck New Wave Gallery, Quarr Gallery. SYMONDSBURY: Sou'-Sou'-West. TAUNTON: Brewhouse Theatre, CIC CIC, Fine Art And Framing, Jane Amour, Museum of Somerset, Quantock Art And Framing, Queen's College, Tacchi-Morris Arts Centre, University Centre Somerset. TINCLETON: Sculpture by the Lakes, Tincleton Gallery. TISBURY: Messums Wiltshire. TIVERTON: Lantic Gallery. TROWBRIDGE: Arc Theatre, Court Street Gallery, The Lamb, Trowbridge Museum. WAREHAM: Purbeck Artisan Yard, Rex Cinema. WARMINSTER: Athenaeum Centre.

WATCHET: East Quay, WELLINGTON: Old Brick Workshop. WELLS: A2 Gallery, Andelli Art, Bishop's Eye, Good Earth, Heritage Courtyard Studios. WEST BAY: Sladers Yard. WEST COKER: Lanes, Old School Room. WESTHAY: Somerset Crafts. WESTON-SUPER-MARE: Frame Station, Playhouse, Weston College. WEYMOUTH: Cove Gallery, Happy Crab Gallery, Unbearable Design Ltd, Weymouth College, Weymouth Pavilion. WILLITON: J Gliddon & Sons. WIMBORNE: Allendale House, Otter Gallery, Square Records, Walford Mill Craft Centre. WIVELISCOMBE: Community Office. WORTH MATRAVERS: Burngate Stone Centre. YEOVIL: EPS, Westlands Entertainment Venue, Yeovil Art Space. YETMINSTER: Old School Gallery.

Plus selected TOURIST INFORMATION CENTRES and LIBRARIES throughout Wessex

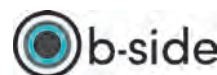
EVOLVER SPONSORS

ACE Arts
Art And Beyond
Artcetera
Aztec Media
B-Side
Black Swan Arts
Boilerhouse Gallery
Bournemouth Arts Club
Bridport Arts Centre
Bull Mill Studio
Dorset Visual Arts
East Quay
Gallery on the Square
Heart of the Tribe Gallery
Ilminster Arts Centre
Kit Glaisyer Fine Art
Lighthouse
The Millhouse
Pound Arts
Shaftesbury Arts Centre
The Slade Centre
Sladers Yard
Somerset Art Works
Sou'-Sou'-West Gallery
Thelma Hulbert Gallery
Tincleton Gallery
Walford Mill
Yeovil Art Space

Our **EVOLVER SPONSORS** make Evolver Magazine possible. We couldn't do it without their ongoing support and advertising, so we make sure they get priority coverage in these pages.

If you'd like to join them, please email simon@evolver.org.uk to find out about our Sponsorship offer (for example our quarter page Evolver Sponsors pay £175 instead of £250 for each bi-monthly advert).

EVOLVER MAGAZINE is delivered to all our Wessex outlets by **ACOUSTIC DISTRIBUTION** (07397 853006)





DVATIONS

NEW FOR SPRING 2025

An innovative programme of curated exhibitions,
events and projects across Dorset

Visit our website to find out more about Dorset Visual Arts

dorsetvisualarts.org



@dorsetvisualarts



Dorset
Council



DA
Dorchester
Arts

Dorset
Museum
& Art Gallery

ARTS
UNIVERSITY
BOURNEMOUTH


HALL & WOODHOUSE



TheGallery

DURLSTON
COUNTRY PARK AND NATIONAL NATURE RESERVE

((acoustic))
DISTRIBUTION

SLADERS YARD