

WESSEX MUSEUMS GUIDE 2022

EVOLVER MAGAZINE SUPPLEMENT





RUSSELL-COTES ART GALLERY & MUSEUM, BOURNEMOUTH

In the Summer 2021 issue of *Evolver Magazine* I wrote about how museums were coping with the cancellation of exhibitions and the adjustments they were making to deal with the lockdowns caused by the pandemic. As we head into 2022 many museums are coping really well and have adapted with imagination as the goalposts constantly move.

The Wessex Museums Partnership - encompassing Dorset Museum in Dorchester, The Salisbury Museum, Poole Museum and Wiltshire Museum in Devizes - are staging Thomas Hardy exhibitions across all four venues from 28 May to 30 October 2022. Curated by Harriet Still they will show previously unseen artifacts that have been in store since Hardy's death in 1928. Each museum has a different display but all focus on social issues connected with Hardy's books that are still relevant today: animal welfare, women's safety and extreme poverty. It will be the largest

collection of Hardy artifacts displayed at one time. Capitalising on a move in heritage settings towards displaying more personal objects, it seeks to explore the world Hardy created in his novels. Salisbury is showing powerful letters written by women to Hardy recounting the abuse they suffered and how they identified with Tess in *Tess of the D'Urbervilles*. Another item in the collection is a sheep's bell. Mentioned in *Far From the Madding Crowd*, it allowed shepherds to find their sheep or to be alerted to any problems. The bells sounded gently when they were just grazing but rang out loudly if they were in trouble.

There is a feast of printmaking across the region throughout 2022. *Wiltshire on Paper: Post-War Prints from the Bath Academy of Art* will be at Chippenham Museum from 8 January to 3 April 2022. Curated by Alan Fuller, their Collections

and Exhibitions Officer, it centres on work with connections to Bath Academy of Art in Corsham. It is the first of three exhibitions running across the year celebrating the recent Golder-Thompson Gift to the museum. The first in the series will include work by Clifford and Rosemary Ellis, who founded and ran the academy, Gillian Ayres, Howard Hodgkin and Michael Finn. The summer exhibition will feature Robin Tanner and his influence on printmaking, and the final one will be of contemporary printmaking including Emma Stibbon, Sarah Gillespie, Ian Chamberlain and Ann Christopher. A publication, *A Century in Print 1920 - 2020: The Golder-Thompson Gift* is in progress.

Postponed from 2020, *Cutting it Fine: The Art of the British Wood Engraver* will run at Salisbury Museum until mid-January. The work on show, from 1920 onwards, includes over a hundred and twenty original prints and a selection of rare illustrated books, comes almost exclusively from a Dorset private collection. It includes historical work by Eric Ravillious, the Nash brothers and brings the display right up to date with work by Ann Desmet and Neil Bousfield. Alongside this they explore the work of Howard Phipps RWA ARE and Howard will be hosting a tour of both exhibitions on 15 January 2022.

Phipps is deeply inspired by trees, landscape and the Wiltshire Downs as was Eric Ravillious. Wiltshire Museum in Devizes has secured a number of important loans from national museums for its exhibition celebrating Ravillious' fascination with the chalk downlands of Wiltshire and Sussex. Curated by James Russell it explores the relationship between landscape and people in a series of watercolours and etchings on show until the end of January.

And so to snails - not an obviously segue - but they do hide away and drive gardeners to despair! They are emerging in various forms across museums in 2022 and particularly notable is the focus on a little

Come and make history with us

ramm

Visit Exeter's award-winning museum and be a part of Devon and Exeter's long, rich history.



Exeter
City Council



Supported using public funding by
ARTS COUNCIL
ENGLAND

Royal Albert Memorial Museum & Art Gallery
Queen Street, Exeter EX4 3RX

www.rammuseum.org.uk



Wessex Museums Guide 2022

known collector Miss Juliana Linter. She donated her extensive collection of fossilised sea and land snails to RAMM the Royal Albert Memorial Museum in Exeter and it is now seeing the light of day as part of their online series of showcases. In 1892 Miss Linter donated around 800 fossil shells to the museum. Once she was happy with the way that they were displayed she offered to donate her substantial collection of land snail shells. Many of these were exotic shells that she had bought at auction or acquired through swops with other collectors. This connects fortuitously with Trish Morrissey's *Self Portrait with Two Snails*. During the first Covid lockdown photographer Morrissey, suffered from crippling anxiety. She turned to growing her own food and watching snails in her garden, activities that forced her to slow down and live in the moment and helped her through this very difficult time. The film will be on show on a screen in the café at RAMM until June 2022.

There are further exhibitions in which artists respond to the RAMM collections making connections with contemporary issues. *Earth Spells: Artists in the Anthropocene* runs from February 2022 to May 2023 and explores how artists are engaging with the climate emergency. It features work by Kiki Smith and others who are in the RAMM collection. Equally topical is a new artwork by Joy Gregory which has been commissioned as part of their exhibition *In Plain Sight: Transatlantic Slavery and Devon*.

Still on the snail shell theme, those who want to search for fossils themselves can take part in one of Lyme Regis Museum's regular Fossil Walks. It is always a good idea to check their website since they can be cancelled when the weather is bad.

Old Ghosts, an exhibition of new work by Glasgow-based artist Mick Peter creates a series of interventions which are perhaps not quite what one would expect to see at the Holburne Museum in Bath! Curator of Contemporary Art Will Cooper had previously worked with Mick and managed to secure Arts Council England funding for a show which affectionately pokes fun at the museum's Heritage status. Peter has created a narrative trail through the building starting with what appears to be an archaeological dig outside with unexpected artifacts being revealed. In the ballroom there is a set for an advert for paint which looks at that moment of waiting around between takes and what happens between activities. Cooper is under no illusion that everyone will like Mick's show but artist and curator both feel it provides an opportunity for people to engage with something and work out why they don't like it.



SOMERSET RURAL LIFE MUSEUM, GLASTONBURY

Peter's work contrasts dramatically with the very different set of portraits in *The Tudors: Passion, Power and Politics* developed in partnership with the National Portrait Gallery and National Museums Liverpool. It features iconic paintings from the Tudor period including portraits of five Tudor Monarchs: Henry VII, Henry VIII, Edward VI, Mary I, and Elizabeth I. Star of the show is the meticulously painted Armada portrait of Elizabeth I with its extraordinarily detailed costume and headdress.

Changing the Shape at Blandford Fashion Museum provides a very different take on costume. It is a fascinating insight into the way fashions in underwear dictated women's silhouettes from the 18th to the

late 20th century. Its display places bustles, corsets, crinolines and modern bras alongside the clothing under which they were worn.

It is clear from what is planned for the coming year that local museums, as opposed to national ones, continue to provide visitors with diverse and extraordinarily rich windows onto our past. Museums and galleries are currently some of the safest places to visit, with timed entries to control the numbers of visitors and mask-wearing as standard.

Fiona Robinson

Supplement front cover: Unknown artist 'Queen Elizabeth I' (circa 1588) © National Portrait Gallery, London



HOLBURN MUSEUM, BATH



RUSSELL-COTES
HOUSE • GALLERY • GARDEN






Bournemouth's unique and unrivalled seaside arts attraction, the Russell-Cotes Art Gallery & Museum, is a captivating homage to the power of love, for people, art and place. This exotic seaside villa showcases Victorian art and celebrates world cultures and is a sanctuary overlooking the seaside bustle. Visit the spectacular gallery and celebrate our centenary in 2022.

russellcotes.com
East Cliff, Bournemouth BH1 3AA
Registered Charity No 306288





Owned and operated by BCP Council



Trowbridge Museum

Discover 1000 years of the town's history and how Trowbridge was shaped by the scale of production and quality of its West of England woollen cloth and became the county town of Wiltshire

The Shires, Court Street, Trowbridge, Wiltshire, BA14 8AT

01225 751339 • trowbridgemuseum.co.uk

Monday - Friday 10am - 4pm, Saturday 10am - 4:30pm • Free entry



ROYAL ALBERT MEMORIAL MUSEUM & ART GALLERY, EXETER

American Museum & Gardens

Claverton Manor, BATH, BA2 7BD.

Tuesday - Sunday 10am - 5pm (15

March - 31 October). Tuesday -

Sunday 10am - 4pm (1 November -

31 December). £14.50 / £13. 01225

460503 / americanmuseum.org.

"With its remarkable collection of folk and decorative arts, the Museum and its gardens take you on a journey through the diverse landscape of American history."



Blandford Fashion Museum

Lime Tree House, The Plocks, BLANDFORD FORUM, DT11 7AA.

Monday, Thursday, Friday and

Saturday (14 February - 26

November) 10am - 4.30pm. £5.50 /

£4.50 / £3. 01258 453006 /

blandfordfashionmuseum.co.uk.

"The Arts Council gave this unique museum accredited status in 2010, retained ever since. There are 13 display spaces over two floors, exhibitions featuring historic dress and textiles up to 1989. They focus on the connection between fashion and social history."

Bridport Museum

25 South Street, BRIDPORT, DT6

3NR. Monday - Saturday 11am -

3pm. £5. 01308 458703 /

bridportmuseum.co.uk.

Bristol Museum & Art Gallery

Queens Road, BRISTOL, BS8 1RL.

Tuesday - Sunday 10am - 5pm. Free entry. 0117 922 3571 /

bristolmuseums.org.uk. "Opened in

1905, Bristol Museum & Art Gallery houses the city's world class collections, from dinosaurs and diamonds to magnificent fine art and Egyptian mummies. Twenty galleries and a changing programme of blockbuster exhibitions tell the story of the world from the beginning of time to the present day."



Dorset Museum

66 High West Street, DORCHESTER,

DT1 1XA. Monday - Saturday 9am -

4.30pm, Sunday and Bank Holidays

10am - 4pm. £12 / £6. 01305 262735 /

dorsetmuseum.org. "Experience the story of Dorset over 250 million years. Come face to face with the dinosaurs of the Jurassic Coast and uncover the archaeology of ancient Wessex. Discover the tales of Thomas Hardy and be inspired by the creativity of Dorset artists."

Follow **EVOLVER** MAGAZINE on Instagram



Wessex Museums Guide 2022

Dulverton Heritage Centre

Guildhall Terrace, Fore Street,
DULVERTON, TA22 9EZ. Monday -
Friday 10.30am - 4.30pm, Saturday
10.30am - 1pm. Free entry.
dulvertonheritagecentre.org.uk.



Holburne Museum

Great Pulteney Street, BATH, BA2
4DB. Monday - Saturday 10am -
5pm, Sunday and Bank Holidays
11am - 5pm (closed 24 - 26
December and 1 January). £12.50.
01225 388588 / holburne.org.

*"Experience critically acclaimed
exhibitions of historical and
contemporary art, lectures,
concerts, workshops and events
against a backdrop of renowned
eighteenth-century portraits,
portrait miniatures, Renaissance
bronzes, ceramics, silver and
embroidery."*

Lyme Regis Museum

Bridge Street, LYME REGIS, DT7
3QA. 10am - 4pm (Winter). 10am -
5pm (Summer). £5.95 / £2.75. 01297
443370 / lymeregismuseum.co.uk.
*"Lyme Regis Museum, perched on
the shoreline, is the home of the
remarkable fossil hunter Mary
Anning and the history of the
Jurassic Coast, from landlips to
sea dragons. With stunning views
of the harbour and the coastline,
the museum is an architectural
gem, full of the stories of Lyme's
outstanding people, with a
programme of exhibitions by the
artists of Lyme Bay, regular fossil
walks, talks and family events."*



TROWBRIDGE MUSEUM

M Shed

Princes Wharf, Wapping Road,
BRISTOL, BS1 4RN. Tuesday -
Sunday 10am - 5pm. Free entry. 0117
352 6600 / bristolmuseums.org.uk.
*"See amazing film and
photographs, listen to moving
personal stories, encounter rare
and quirky objects, and add your
own memories of Bristol through
the interactive displays. From
prehistoric times to the present
day, M Shed tells the story of the
city and its unique place in the
world."*

Museum of Memories

Marine Parade, WESTON-SUPER-
MARE, BS23 1AL. Winter: 10am -
4am. £3. 01934 646155 /
museumofmemories.co.uk. *"The
Museum of Memories at Weston-
Super-Mare's Grand Pier features
thousands of items to transport
visitors back to their childhood on a
trail of discovery, through toys,
sweets, breakfast cereals,
memorable television shows,
seaside trips and more!"*



The Museum of Somerset

Taunton Castle, Castle Green,
TAUNTON, TA1 4AA. Tuesday -
Saturday (plus bank holidays and
some Sundays) 10am - 5pm. Free
entry. 01823 255088 /
museumofsomerset.org.uk.
*"Discover 400 million years of
history. Housed in Taunton's
historic castle, the Museum tells
the county's fascinating story from
prehistoric times to the present
day."*

Poole Museum

4 High Street, POOLE, BH15 1BW.
Winter (until 8 April 2022): Monday -
Saturday 10am - 4pm, Sunday
12noon - 4pm. Summer (9 April - 30
October 2022): 10am - 5pm. Free

entry. 01202 128888 /
poolemuseum.org.uk. *"The rich
history of the ancient port town of
Poole is revealed in four floors of
galleries housed in a 19th century
quayside warehouse."*

Red House Museum

Quay Road, CHRISTCHURCH, BH23
1BU. Tuesday - Saturday 10am -
4pm, Sunday 12noon - 4pm. Free
entry. 01202 482860 /
hampshireculture.org.uk. *"A former
Georgian workhouse, the Red
House is now a museum exploring
the story of Christchurch from
before the Ice Age to modern
times."*

Royal Albert Memorial Museum & Art Gallery

Queen Street, EXETER, EX4 3RX.
Tuesday - Sunday 10am - 5pm
(closed Bank Holidays). Free entry.
01392 265858 / rammuseum.org.uk.
*"Exeter's world-class museum, with
fascinating displays and galleries,
amazing exhibitions and modern
amenities. Museum of the Year
2012 winner."*

The Tudors: Passion, Power & Politics

28 JANUARY TO
8 MAY 2022

In partnership with

National
Portrait
Gallery

Queen Elizabeth I (detail) by an unknown English artist,
c. 1588 in National Portrait Gallery, London

Also...

Mick Peter: Old Ghosts

14 January to 15 May 2022

Love Life: David Hockney's Drawings

27 May to 18 September 2022

Rodin & Degas

3 September 2022 to 2 January 2023

Great Pulteney Street, Bath
WWW.HOLBURNE.ORG

THE
HOLBURNE
MUSEUM

Wessex Museums Guide 2022

Russell-Cotes Art Gallery & Museum

East Cliff Promenade, BOURNEMOUTH, BH1 3AA. Tuesday - Sunday and Bank Holiday Mondays 10am - 5pm. £7.50 / £4. 01202 128000 / russellcotes.com.

"This exotic seaside villa showcases Victorian art and celebrates world cultures in a captivating homage to the power of love, for people, art and place."



The Salisbury Museum

The Kings House, 65 The Close, SALISBURY, SP1 2EN. 10am - 5pm. £8.80 / £4.40 / £4. 01722 332151 / salisburymuseum.org.uk. *"The Salisbury Museum tells the story of a unique landscape which has been the cradle of continuous human achievement for over half a million years."*

Sherborne Museum

1 Church Lane, SHERBORNE, DT9 3BP. Tuesday, Thursday and Saturday 10.30am - 4.30pm. Free entry. 01935 812252 / sherbornemuseum.co.uk.



Shire Hall Museum

High West Street, DORCHESTER, DT1 1UY. Monday - Saturday 10am - 4pm. £9.50 / £7.50 / £5. 01305 261849 / shirehalldorset.org. *"Award-winning social justice museum in the heart of Dorset, bringing over 200 years of justice and injustice to life."*



Elisabeth Frink and the Collections Discovery Centre

Hidden behind the scenes of all museums is a wealth of treasure. It is impossible to display all the millions of items in any museum's collection but there's often the opportunity to view them via appointment or on open days. One such venue, Dorset Museum, holds over 300 items from the Elisabeth Frink estate including 31 bronze sculptures, several plasters, studio tools, and over 100 prints and drawings.

The majority of the sculptures acquired by the Museum are displayed in the Dorset Artists gallery, and others can be seen in the library and sculpture courtyard. However, only a small number of prints and drawings are on display. Most of the items not shown are stored in the Museum's Collection Discovery Centre, a state of the art storage facility that is also visible through a glass façade when visitors enter the lower ground floor.

These prints and drawings are hung on picture racking that forms part of the new storage. They include well-known images of dogs, horses and male figures, but also a less familiar series of watercolours that Frink worked on with the actress, novelist and filmmaker Mai Zetterling for an unpublished children's book. These items are only available to view by those who book one of the Collection Discovery Centre tours or those who book to carry out research in the store. Dorset Museum hopes to offer more of these tours throughout 2022.

Suzi Rushbrook

Somerset Rural Life Museum

Chilkwell Street, GLASTONBURY, BA6 8DB. Winter (until Easter 2022): Tuesday - Saturday 10am - 5pm. Summer (Easter - 31 October): Tuesday - Sunday 10am - 5pm. £7.50 / £5.95 / £3.50. 01458 831197 / srlm.org.uk. *"A unique heritage attraction on the site of the former Abbey Farm. Here you can explore rural life from the 1800s onwards."*

Trowbridge Museum

The Shires, Court Street, TROWBRIDGE, BA14 8AT. Monday - Friday 10am - 4pm, Saturday 10am - 4.30pm. Free entry. 01225 751339 / trowbridgemuseum.co.uk. *"Discover 1000 years of the town's history and how Trowbridge was shaped by the scale of production and quality of its woollen cloth and became the county town."*

Wareham Town Museum

Town Hall, East Street, WAREHAM, BH20 4NS. Wednesday - Saturday 10am - 4pm (16 April - 31 October). 01929 553448 / wtm.org.uk. *"Our museum tells the story of the geology, archaeology and history of the Wareham area, with a special collection featuring Lawrence of Arabia, who lived nearby."*

Wiltshire Museum

41 Long Street, DEVIZES, SN10 1NS. Tuesday - Saturday 10am - 4pm, Sunday and Monday 11am - 4pm. £6.50 / £6 / £5.50 / £5. 01380 727369 / wiltshiremuseum.org.uk. *"The museum contains the largest collection of Early Bronze Age gold ever put on public display in England. Award-winning displays include 500 Stonehenge period objects."*

Wells & Mendip Museum

8 Cathedral Green, WELLS, BA5 2UE. Tuesday - Saturday 10am - 4pm. £4 / £1. 01749 673477 / wellsmuseum.org.uk. *"Wells & Mendip Museum tells the story of the Mendip landscape and its inhabitants, with a large selection of geological and archaeological specimens, and social history artefacts."*

Where Mary Anning lived

- Fossil, rockpool, town & Mary Anning walks
- Interactive fossil gallery
- Stunning panoramic views of Lyme Bay
- Events and activities throughout the year
- Fun, family-friendly learning centre

AT THE HEART OF THE JURASSIC COAST

DISCOVER THE STORY OF LYME'S FANTASTIC FOSSILS AND MUCH MORE

Bridge Street, Lyme Regis DT7 3QA
www.lymeregismuseum.co.uk

Registered Charity Number: 1041201

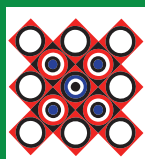
Hardy's Wessex

The landscapes that inspired a writer

28 May – 30 October 2022

Hardy's Wessex is the largest collection of Thomas Hardy objects ever displayed at one time. Many of these precious items have never been on public display before, from period costumes to personal letters, art to archaeology. This major exhibition spans four museums, each focussing on different themes in the Victorian writer's life. It explores how the landscapes and characters of Wessex inspired Hardy and shaped his view of the world. **Dorset Museum** (Dorchester), **Poole Museum**, **The Salisbury Museum** and **Wiltshire Museum** (Devizes). wessexmuseums.org.uk/thomas-hardy

DISCOVER Exhibitions to see in 2022



THE ART OF BRIAN RICE: 60 YEARS OF PAINTING AND PRINTS

A display of more than 30 vibrant abstract works by a painter-printmaker who was born in Somerset but made an international name for himself in 1960s London. Brian Rice moved in the same circles as David Hockney, Jo Tilson and Peter Blake, and worked at the forefront of British Modernism. Later works reflect his fascination with the west country's archaeology.

Dates: OPEN UNTIL 26 FEBRUARY
Venue: THE MUSEUM OF SOMERSET, TAUNTON



THE BLACKDOWN HILLS: A PHOTOGRAPHIC PORTRAIT

A photographic exhibition documenting two decades of farming life on the Blackdown Hills by Somerset-based photographer Pauline Rook. Pauline has explored hundreds of miles of country lanes getting to know the individuals, countryside and buildings that make up this distinctive landscape. Includes a selection of recent work which has been captured using an infrared sensitive camera.

Dates: 8 JANUARY – 19 MARCH
Venue: SOMERSET RURAL LIFE MUSEUM, GLASTONBURY



IN XANADU: COLERIDGE AND THE WEST COUNTRY

An exhibition in partnership with the British Library to showcase the earliest manuscript of Samuel Taylor Coleridge's extraordinary poem *Kubla Khan*. The exhibition celebrates the return of the manuscript to the county where the poem was written. It will tell the story of Coleridge's time spent living in and near the Quantock Hills, his relationship with William and Dorothy Wordsworth, and the legacy of his writing.

Dates: 12 MARCH – 25 JUNE
Venue: THE MUSEUM OF SOMERSET, TAUNTON



CRAFT - SOMERSET PORTRAITS AND VOICES

Somerset artist Kate Lynch documents the people practising old crafts and trades in Somerset. Kate's charcoal drawings and paintings pay tribute to their knowledge and time-honoured skills. There are 30 traditional craftspeople featured including basketmakers, weavers, blacksmiths, farriers, potters, hedgelayers and many more.

Dates: 26 MARCH – 5 JUNE
Venue: SOMERSET RURAL LIFE MUSEUM, GLASTONBURY

To find out more, including the latest information about opening hours and admission, visit swheritage.org.uk

IMAGES: Red Assembly, 1964, by Brian Rice, Henry Derryman with a shearing ram at Peterhayes Farm by Pauline Rook, Samuel Taylor Coleridge by Peter Vandyke © National Portrait Gallery, London, Mary Cross weaving a rustic willow basket by Kate Lynch

ERIC RAVILIOUS: DOWNLAND MAN

EXHIBITION

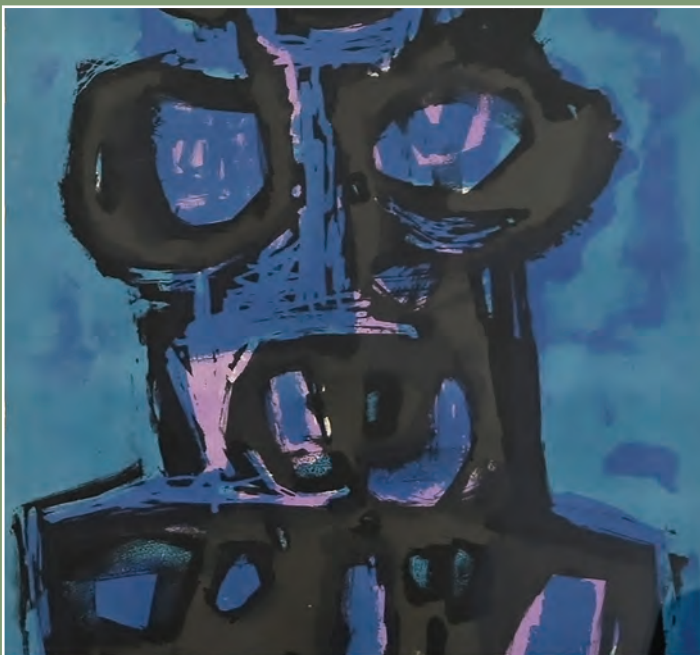
EXPLORING FOR THE FIRST TIME, ERIC RAVILIOUS'S FASCINATION FOR
THE CHALK DOWNLANDS OF WILTSHIRE AND SUSSEX



25 SEPTEMBER TO 30 JANUARY 2022
OPEN SEVEN DAYS A WEEK

www.wiltshiremuseum.org.uk

41 Long Street,
Devizes, SN10 1NS



Wiltshire on Paper

Post-War Prints from the Bath Academy of Art



Chippenham
Museum
Chippenham Town Council

8 Jan - 2 Apr 2022
10am - 4pm, Mon - Sat
Free entry

Blandford Fashion Museum



Lime Tree House, The Plocks,
Blandford Forum, Dorset DT11 7AA

01258 453006

blandfordfashionmuseum.co.uk

Entry Charges: Adults £5.50 / Seniors (60+) £4.50 / Students (16+) £3 /
Children under 16 Free / Friends of the Museum Free

Please note that under 16s must be accompanied by a fee paying adult

Charity Number (Cavalcade of Costume Ltd): 1052471

