

# WESSEX WINTER GUIDE 2022

EVOLVER MAGAZINE PULL-OUT SUPPLEMENT

ROBIN MACKENZIE





# Wessex Winter Guide 2022



RAMP (Thelma Hulbert Gallery)



CLARE O'NEILL (Fisherton Mill)



PHIL CLAYTON (Sou'-Sou'-West Gallery)

As the nights draw in and mornings find our landscapes shrouded in mist and dripping with dew, it is clear that winter is almost upon us. The beauty of our surroundings are still enticing but it is easy to stay close to home and snug and warm. The WESSEX WINTER GUIDE is designed to give you a seasonal tour around the region, focussing on what our artists and makers have on offer at this time of year.

With such a wealth of creativity available to us we want to encourage you to venture out to visit these venues, and to shop independently and creatively for the festive season. We wish to highlight the magical and reengage you with the wonder and excitement of what is happening around us. See our performance listings and take in a show or concert, and relish being able to choose to do such things.

There are some fabulous collaborative shows at this time of year, including one by new printmaking collective Citizens of Printland. They will take over GALLERY BY THE LAKES to present their debut exhibition *Look Up! A journey through Printland*. The collective features nine artists who share a passion for printmaking in all its forms and come from a mix of backgrounds including fine art, graphic design and illustration. This promises to be a vibrant exhibition; as well as works on paper there will be a number of sculptural interventions – printmaking that is making a three-dimensional leap and blurring the boundaries with sculpture. Opening with a bang on Bonfire Night, go and see the work of these new 'citizens' and see how they have responded to their title *Look Up!*

The seasonal exhibition at ACE ARTS is *A Visible Thread* by the Seam Collective. It aims to encourage visitors to "rethink their relationship to thread, be aware of its materiality, its possibilities and limitations, to take part and play". Engaging with textiles is a popular winter pursuit, and as well as their current show they have a fabulous contemporary craft shop where they showcase ceramics, jewellery, prints and paintings, and more, all made by regional artisans. Currently fundraising to purchase their building and secure this important visual arts venue for Somerset, it is well worth a visit to Somerton.

In Corfe Castle you will find the BOILERHOUSE GALLERY hosting an impressive portfolio of Purbeck artists. An eclectic mix of makers and fine artists, this collective is renowned for putting on a





## Group 7

Connections

19 Nov 2022 -  
22 Jan 2023



MAKERS  
GIFT SHOP

OPEN 7 DAYS A  
WEEK 10AM – 4PM

galleries | studios | shop | cafe

2 Bridge Street, Frome BA11 1BB



BLACKSWANARTS

01373 473980 | [www.blackswanarts.org.uk](http://www.blackswanarts.org.uk)

FREE ENTRY Registered Charity No. 292463





PAUL CLEDEN 'CLOUDS OF CANDYFLOSS' (Sculpture by the Lakes + Dorset County Hospital)

spectacular seasonal show in their multi studio site opposite the vintage railway station.

THE THELMA HULBERT GALLERY in Honiton houses a permanent collection of the artist's work, as well as hosting contemporary art and craft exhibitions. *Present Makers* has been running for the last 15 years and is a leading annual selling exhibition in the UK craft calendar. This year's theme is nature, and focusses on jewellery and ceramic collections, as well as showcasing emergent makers.

In Salisbury you'll find FISHERTON MILL, the largest independent arts complex in the south-west. It's always worth a visit, but especially at Christmas when all is bright and sparkling. Their Christmas exhibition entitled *Not Just Camels...* is again an eclectic collective show. They

launch their festive season on 11 November with a shopping evening accompanied by mulled wine, seasonal snacks and live music.

In Symondsbury, on the edge of Bridport, SOU'-SOU'-WEST offer both a festive exhibition *Unwrapped* and a *Winter Open*. This gallery and shop in a pretty courtyard setting always has a full programme. The deadline for open entries is not until 28 November, so for the creatives amongst you there's still time to submit work!

From 18 November until 23 December HEART OF THE TRIBE GALLERY will be hosting their *Winter Open*. Filled with the work of a huge selection of artists, it is the perfect opportunity to view work by established and emerging artists at this, very much community orientated, gallery in Glastonbury.

At BLACK SWAN ARTS in Frome from 19 November you'll find Group 7. This established collective always produce a quality show, celebrating colour, surface and composition in a mix of mediums, this exhibition *Connections* is no exception. There is also an excellent Makers gift shop, café and artists' studios onsite.

LANACRE BARN GALLERY in the heart of Exmoor opens its Christmas show on 19 November. A celebration of the Moor in many mediums, this exhibition features work by Slade schooled fine artists, jewellers, printmakers and photographers, as well as slipware ceramics in their north Devon origins. There are refreshments on offer for those that venture that way.

*Suzy Rushbrook*

## CONTEMPORARY PRINT & THE INK ON PAPER PRESS

10 December-25 March, Free entry

Monday-Saturday, 10am-4pm

[heritage@chippenham.gov.uk](mailto:heritage@chippenham.gov.uk) | 01249 705020

[chippenham.gov.uk/chippenham-museum](http://chippenham.gov.uk/chippenham-museum)




Chippenham  
Museum

Chippenham Town Council



© Sarah Gillespie





**PRESENT  
MAKERS 2022**

Christmas selling exhibition of  
contemporary craft and design  
12 November – 24 December 2022

01404 45006  
info@thelmahulbert.com  
thelmahulbert.com  
thelmahulbert

**THG** Thelma Hulbert Gallery

Wed – Sat, 10am – 5pm  
Elmfield House, Dowell Street  
Honiton, EX14 1LX

**HANDMADE  
FOR CHRISTMAS #11**  
28 OCT - 31 DEC 2022

**A TWO MONTH SLICE OF  
CHRISTMAS SHOPPING HEAVEN**

A glorious mix of unique and  
beautiful gifts from  
local designers,  
artists and  
makers

**open  
9.30-4.30  
everyday**  
\*closed Christmas + Boxing Day

**THE WORKHOUSE CHAPEL**  
Bath Road, Sturminster Newton  
DT10 1DS • 07900 580716  
workhousechapel.co.uk

## Wessex Winter Guide 2022



MICHELLE GRIFFITHS 'RECIPE FOR DISASTER'

### Group 7: Connections

"A new show at Black Swan Arts by the Group 7 collective of artists features paintings, prints, sculpture and drawings, with an emphasis on colour and abstraction. *Connections* includes work by Brian Bishop, Martin Brewster, Bonnie Brown, Michelle Griffiths, Ursula Leach, Stephen Powell and Peter Symons. Each member is an established artist with a distinct artistic practice and identity, but they all share common ground in the predominantly painterly language of colour and abstraction."

**19 November - 22 January:** Black Swan Arts, 2 Bridge Street, FROME, BA11 1BB. Monday - Sunday 10am - 4pm. 01373 473980 / blackswanarts.org.uk / group7.org.uk.

### Visual Arts

#### PAUL CLEDEN

**Until 9 January**

Main Corridor, North Wing, Dorset County Hospital, DORCHESTER, DT1 2JY. 8am - 6pm. 01305 253424 / dchartsinhospital.org.uk. "Paul Cleden's printmaking focuses on linocuts. His ability to capture figurative movement gives us a collection of vibrant, dynamic pieces that bring joy to all who see them. The exhibition with its dramatic colours and sweeping lines will be a fabulous winter show for staff, patients and visitors alike."

#### 'LOOK UP!'

**5 November - 23 December**

Gallery by the Lakes, Pallington Lakes, PALLINGTON, Dorchester, DT2 8QU. Wednesday - Sunday 10am - 5pm. 07979 812083. "The Citizens of Print Land are 9 artists who share a love of printmaking techniques, including wood engraving, linocut and screenprint, and use these to create vibrant images that celebrate the beauty of our landscape, both in the country and the city. Featuring work by Paul Cleden, Lisa Takahashi, Robin Mackenzie, Colin Moore and others."



**CATHY VEALE**  
PAINTINGS AND PRINTS

For a unique Christmas gift

WWW.CATHYVEALE.CO.UK



# Wessex Winter Guide 2022

## 'RETURN OF THE MAKERS'

**5 November - 24 December**

The Creative Gallery, St John's Hill, WAREHAM, BH20 4NB. Monday - Saturday 10am - 5pm. 01929 551505. *Ceramics, metal, sculpture, textiles and wood.*

## 'HEADS AND TALES'

**5 November - 24 December**

Little Box Room, 2 Bath Street, FROME, BA11 1DG. Wednesday, Saturday and Sunday 11am - 3pm. 07493 943845 / littleboxroom.com. *"Catherine Phelps and Robert Lee show ceramic vases, bowls and chickens alongside assemblages of found objects in reclaimed boxes."*

## 'NOT JUST CAMELS...'

**5 November - 31 December**

Fisherton Mill, 108 Fisherton Street, SALISBURY, SP2 7QY. Monday - Saturday 10am - 5pm. 01722 415121 / fishertonmill.co.uk. *"Fisherton Mill's annual Christmas exhibition features no less than 18 talented artists and makers with a dazzling array of exciting and original gift ideas, including, as you would expect, some brilliantly quirky ceramic Christmas camels!"*

## 'UNWRAPPED: A FESTIVE EXHIBITION'

**16 November - 8 January**

Sou'-Sou'-West Arts Gallery, Symonds Estate, BRIDPORT, DT6 6HG. 10.30am - 4.30pm. 01308 301326 / sousouwest.co.uk. *"Get your festive preparation done early with the opening of a special selling exhibition featuring some of the best handmade decorations, tableware, greetings cards and gift inspiration our local artistic community has to offer."*

## WINTER OPEN 2022

**18 November - 23 December**

Heart of The Tribe Gallery, 74 High Street, GLASTONBURY, BA6 9DZ. 11am - 5pm. 01458 832167 / heartofthetribe.com.

## LANACRE BARN GALLERY CHRISTMAS EXHIBITION

**19 November - 4 December**

Lanacre Barn Gallery, WITHYPOOL, TA24 7SD. 11am - 5pm. moorlandart.com



NATTY DECO

## Handmade for Christmas

Established makers Rose Hatcher and Kate Osman's annual exhibition *Handmade for Christmas* is a down-to-earth, honest approach to collaborative exhibiting, featuring 70 guest makers from Dorset and the surrounding counties. The last ten years has seen the show grow in both size and confidence, every square inch of space is utilised with ingenious display ensembles, it is quite literally filled to the rafters and the antithesis of a white cube space.

The focus here is very much on hand-making skills with an immovable green ethos. Traditional crafts are celebrated but you can also find the weirdest and wackiest of contemporary pieces! Modern mosaics sit alongside superbly turned wooden bowls, handwoven scarves and millinery next to ceramics, blacksmithing, silversmithing and glass work that seems to sing in the chapel environment. This merely scratches the surface, every year it becomes bigger and better.

*Suzu Rushbrook*

**Until 31 December:** The Workhouse Chapel, Bath Road, STURMINSTER NEWTON, DT10 1DS. 9.30am - 4.30pm (closed Christmas Day and Boxing Day). 07900 580716 / workhousechapel.co.uk.

## 'FOR MIDWINTER'

**19 November - 31 December**

Clifton Contemporary Art, 25 Portland Street, Clifton, BRISTOL, BS8 4JB. Tuesday - Saturday 10am - 5pm. 0117 317 9713 / cliftoncontemporaryart.co.uk. *"Woodland paintings by Sally Stafford, dramatic landscapes by Parastoo Ganjei, original printwork by Chuck Elliott, studio pottery by Trevor Lillistone and beautifully crafted jewellery by Anthony Feiler."*

## 'WISH LIST'

**26 November - 17 December**

Andelli Art, Mendip House, Upper Breach, South Horrington, WELLS, BA5 3QG. Monday, Wednesday, Friday and Saturday 10am - 5pm. 07790 030506 / andelliart.com. *"20th Century and contemporary art, jewellery and ceramics."*



## BEAR FLAT ARTISTS CHRISTMAS ART FAIR & MARKET

**3 December**

Methodist Church Hall, Bruton Avenue, BEAR FLAT, BA2 4QJ. 10am - 5pm. bearflatartists.co.uk. *"Unique artwork and handmade gifts for sale."*

## SOU'-SOU'-WEST WINTER OPEN

**3 December - 8 January**

Sou'-Sou'-West Arts Gallery, Symonds Estate, BRIDPORT, DT6 6HG. 10.30am - 4.30pm. 01308 301326 / sousouwest.co.uk. *"Annual winter open, featuring the work of artists and makers from all over the south west region."*

## EELES POTTERY

**7 - 31 December**

The Gallery, Shaftesbury Arts Centre, Bell Street, SHAFTESBURY, SP7 8AR. Monday - Saturday 10am - 4pm. 01747 855243. *"Over 300 new pieces ready for Christmas gifts!"*

# SHERBORNE TIMES

A MONTHLY CELEBRATION OF PEOPLE, PLACE AND PURVEYOR

## OUT NOW AND ONLINE

sherbornetimes.co.uk



# Wessex Winter Guide 2022

## Music and Performance

### 'JACK FROST AND THE SEARCH FOR WINTER'

19 November

Lighthouse, 21 Kingland Road, POOLE, BH15 1UG. 11am and 2pm. [lighthousepoole.co.uk](http://lighthousepoole.co.uk). "In this enchanting new play, Jack and his new-found friend search for winter and attempt to restore Jack's special gift. Circling the globe, they meet characters who share their own special shimmering seasonal winter magic, but will Jack's magic return?"

### 'TWISTED CHRISTMAS'

2 December

Village Hall, WINTERBORNE STICKLAND, DT11 0NT. 7.30pm. £12 / £6. 01258 880920 / [artsreach.co.uk](http://artsreach.co.uk). "A darkly comic evening of macabre mini plays all with a festive flavour!"

### RICK WAKEMAN: 'GRUMPY CHRISTMAS STOCKING TOUR'

2 December

Lighthouse, 21 Kingland Road, POOLE, BH15 1UG. 7.30pm. 01202 280000 / [lighthousepoole.co.uk](http://lighthousepoole.co.uk). "Rick Wakeman's Christmas shows have become a must-see feature of the festive season. Performing on a grand piano and electric keyboards, he always manages to bring a new twist to his unique musical arrangements for songs from his own career and others, as well as delivering a few surprises, all punctuated by his hilarious stories."

### 'TWISTED CHRISTMAS'

3 December

Royal Manor Theatre, PORTLAND, DT5 1LT. 7.30pm. £10 / £5. 03336 663366. See 2 December.

### THE RIDGEWAY SINGERS & BAND: 'WEST GALLERY CAROLS'

4 December

St Gregory's Church, MARNHULL, DT10 1PZ. 4pm. £8 / £5. 01258 820458 / [artsreach.co.uk](http://artsreach.co.uk). "A joyous celebration of Christmas past and present."



## Snow Angel

"Subversive, anarchic, darkly hilarious and shamelessly festive, *Snow Angel* is a Christmas show that threatens to blow the cover off Elsa and Anna, *The Snowman* and a poor little drummer boy. Santa will never be the same. Expect the unexpected. And a rather touching Eskimo. Mad-capped, joyous and at times preposterous, this is an evening of festive frivolity with a tiny sparkle of magic that will delight. Charlie Bicknell and Louise Innes present a shamelessly festive cabaret show celebrating all that is Christmassy."

**9 December:** The Mowlem, SWANAGE, BH19 1DD. 7.30pm. £12 / £6. 03336 663366 / [artsreach.co.uk](http://artsreach.co.uk).

**10 December:** Memorial Hall, STURMINSTER MARSHALL, BH21 4BQ. 7.30pm. £12 / £5. 07903 057427 / [artsreach.co.uk](http://artsreach.co.uk).

### 'TREASURE ISLAND - THE PIRATE PANTO'

5 - 10 December

Studio Theatre, Ashley Road, SALISBURY, SP2 7TN. 7.30pm. £12 / £8. [studiotheatre.org.uk](http://studiotheatre.org.uk).



### 'THE JOLLY CHRISTMAS POSTMAN'

6 - 24 December

Lighthouse, 21 Kingland Road, POOLE, BH15 1UG. 01202 280000 / [lighthousepoole.co.uk](http://lighthousepoole.co.uk).



### 'CINDERELLA'

8 - 31 December

Lighthouse, 21 Kingland Road, POOLE, BH15 1UG. 01202 280000 / [lighthousepoole.co.uk](http://lighthousepoole.co.uk).

### BSO BRASS: 'CHRISTMAS FANFARE'

9 December

Village Hall, LYTCHETT MATRAVERS, BH16 6DD. 7.30pm. £10 / £5. 07795 467666 / [artsreach.co.uk](http://artsreach.co.uk).

### 'CHRISTMAS AT THE OPERA'

9 and 10 December

The Exchange, Old Market Hill, STURMINSTER NEWTON, DT10 1FH. 7.30pm. £30. 01258 475137 / [stur-exchange.co.uk](http://stur-exchange.co.uk).



## YEOVIL Super Santa SATURDAY

YEOVIL TOWN CENTRE  
10 December 2022

FOOD AND DRINK • BUSKFEST  
COMMUNITY STALLS • CHRISTMAS CRAFTS  
AND LOTS MORE!

[facebook.com/yeovilsupersaturday](https://facebook.com/yeovilsupersaturday)







## The Scrooge Diaries

"So you think you know the Christmas Carol story? Bah! In this revelatory exclusive, Ebenezer Scrooge opens his diary to expose the awful truth about Tiny Tim, the Fezziwigs, Jacob Marley and that disgustingly jolly, gluttonous, consumer-driven Ghost of Christmas Present as he reveals the truth behind *A Christmas Carol* and the vengeful, slanderous, upstart author of that novel."

**16 December:** Village Hall, MARTINSTOWN, DT2 9JY. 7.30pm. £10 / £5. 01305 889738 / artsreach.co.uk.

**18 December:** Village Hall, STUDLAND, BH19 3BT. 4pm. £10 / £5. 01929 450587 / artsreach.co.uk.

### THE CHURCHFITTERS: 'CHRISTMAS CRACKER'

**15 December**

Memorial Hall, CRANBORNE, BH21 5PZ. 8pm. £10 / £5. 07770 227095 / artsreach.co.uk. "Foot-stomping fiddle mixed with infectious funk-rock rhythms."

### THE CHURCHFITTERS: 'CHRISTMAS CRACKER'

**16 December**

Village Hall, WINFRITH, DT2 8JR. 7.30pm. £12.50 (includes festive supper). 01305 853783 / artsreach.co.uk. See 15 December.

### THE CHURCHFITTERS: 'CHRISTMAS CRACKER'

**17 December**

Comrades Hall, BROADWINDSOR,

DT8 3QP. 7.30pm. £10 / £5. 07796 454203 / artsreach.co.uk. See 15 December.

### BSO: 'LAST NIGHT OF THE CHRISTMAS PROMS'

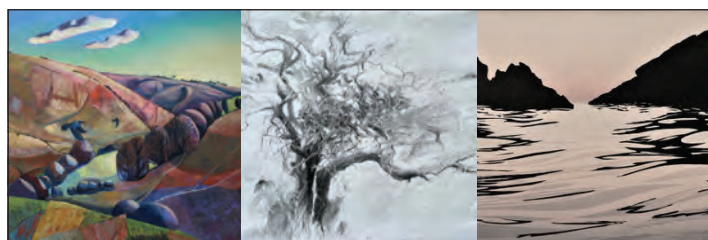
**17 December**

Lighthouse, 21 Kingland Road, POOLE, BH15 1UG. 7.30pm. 01202 280000 / lighthousepoole.co.uk. "A fun-packed concert for all the family, featuring classics old and new, all wrapped up with a sprinkling of magic and sparkle."

### BSO: 'CELEBRATION OF CHRISTMAS CAROLS'

**23 December**

Lighthouse, 21 Kingland Road, POOLE, BH15 1UG. 7.30pm. 01202 280000 / lighthousepoole.co.uk.



## LANACRE BARN GALLERY CHRISTMAS EXHIBITION

**19th November - 4th December**

Open daily 11am-5pm

Lanacre Barn Gallery, Withypool, TA24 7SD  
[moorlandart.com](http://moorlandart.com)



Holkham Tidepool (detail) by Colin Moore

# LOOK UP!

An exhibition which promises to celebrate the diversity of contemporary printmaking and take you on a journey through Print Land.

**Nov 5 - Dec 23 2022**

Tuesday - Saturday | 10am - 5pm

**Free entry to exhibition**

Jane Chapman  
Paul Cleden  
Rebecca Drury  
Rebecca Guyett  
Robin Mackenzie  
Colin Moore  
Jason Pizzey  
Lisa Takahashi  
Noah Warnes

THE  
GALLERY  
— AT —  
SCULPTURE  
BY THE LAKES

[gallerybythelakes.co.uk](http://gallerybythelakes.co.uk)

Pallington Lakes, Dorchester, Dorset, DT2 8QU





## Boilerhouse Gallery

Contemporary art and craft in a wonderful location

Open Tuesday to Sunday 11am - 4pm

Join us for our Festive Weekends during December, meet the artists and find those truly original Christmas gifts

Sandy Hill Lane, Corfe Castle BH20 5JF  
07398 052489 • boilerhousegallery.co.uk



BRIDPORT  
ARTSCENTRE

# Future Present

**22 NOV - 21 DEC**

HIGH-QUALITY DESIGNER MAKER EXHIBITION

**NICK BERKELEY:  
TIME AFTER TIME  
& THE WILD ONES**

EXHIBITION | UNTIL 12 NOV

ARTIST TALK: 3 NOV, 7PM

An exhibition of work by Nick Berkeley, combining images from Time After Time (1999) and The Wild ones (2016) shown together for the first time.

Visit us online at [www.bridport-arts.com](http://www.bridport-arts.com) or call **01308 424901**.

\*The Gallery is open Tuesdays – Saturdays, 10am to 4pm. FREE ENTRY.



# WINTER OPEN EXHIBITION 2022

18th NOVEMBER - 23rd DECEMBER

This is the second year of our annual Winter Open Exhibition. Celebrating the wealth of creative talent that is on offer in the South West and beyond.

Featuring work from both Core and Directory Artists, the exhibition will play host to a wide range of artistic disciplines and eclectic styles.



*Flexagon*  
by Raury Allan



HEART OF  
THE TRIBE  
ART GALLERY

01458 832167

[Gallery@HeartofTheTribe.com](mailto:Gallery@HeartofTheTribe.com)

[www.HeartofTheTribe.com](http://www.HeartofTheTribe.com)

[@HeartofTheTribeGallery](https://www.instagram.com/HeartofTheTribeGallery)

74 High Street, Glastonbury, BA6 9DZ

SCAN  
CODE  
FOR  
MORE  
EVENTS  
INFO



ART | ENERGY | COMMUNITY